

Data Path : Z:\pestpcbsrv\HPCHEM1\ECD_0\Data\P0082922\
 Data File : P0089153.D
 Signal(s) : Signal #1: ECD1A.ch Signal #2: ECD2B.ch
 Acq On : 30 Aug 2022 06:26
 Operator : YP/AJ
 Sample : I.BLK
 Misc :
 ALS Vial : 2 Sample Multiplier: 1

Instrument :
 ECD_0
 ClientSampleId :
 I.BLK

Integration File signal 1: autoint1.e
 Integration File signal 2: autoint2.e
 Quant Time: Aug 30 07:36:07 2022
 Quant Method : Z:\pestpcbsrv\HPCHEM1\ECD_0\methods\P0082922.M
 Quant Title : GC EXTRACTABLES
 QLast Update : Mon Aug 29 17:48:02 2022
 Response via : Initial Calibration
 Integrator: ChemStation

Volume Inj. : 2 µl
 Signal #1 Phase : ZB-MR1 Signal #2 Phase: ZB-MR2
 Signal #1 Info : 30Mx0.32mmx 0.50µ Signal #2 Info : 30M x 0.32mm x 0.25µm

Compound	RT#1	RT#2	Resp#1	Resp#2	ng/ml	ng/ml
System Monitoring Compounds						
1) SA Tetrachlo...	4.431	3.588	73324504	22255950	19.555	23.057
2) SA Decachlor...	10.259	8.571	48391766	22851598	21.019	25.842
Target Compounds						
3) L1 AR-1016-1	5.628	4.673	306541	208962	2.726	5.786 #
4) L1 AR-1016-2	5.628	4.673	306541	208962	1.945	4.233 #
5) L1 AR-1016-3	5.676	0.000	460447	0	4.721	N.D. #
7) L1 AR-1016-5	6.134f	5.148	5377498	4922253	70.071	168.699 #
8) L2 AR-1221-1	4.642	3.750f	302001	313788	7.103	27.423 #
9) L2 AR-1221-2	4.739	3.885	1217895	323944	38.976	37.035
10) L2 AR-1221-3	4.739f	0.000	1217895	0	13.119	N.D. #
11) L3 AR-1232-1	4.739f	0.000	1217895	0	16.557	N.D. #
12) L3 AR-1232-2	5.145	4.673	104248	208962	2.780	9.879 #
13) L3 AR-1232-3	5.628	0.000	306541	0	4.592	N.D. #
15) L3 AR-1232-5	5.883	5.148	125628	4922253	4.649	421.737 #
16) L4 AR-1242-1	5.628	4.673	306541	208962	3.468	7.173 #
17) L4 AR-1242-2	5.628	4.673	306541	208962	2.477	5.275 #
18) L4 AR-1242-3	5.676	0.000	460447	0	5.990	N.D. #
20) L4 AR-1242-5	6.568f	5.486	7103420	3061863	110.349	112.085
21) L5 AR-1248-1	5.628	4.673	306541	208962	4.451	9.304 #
22) L5 AR-1248-2	5.883	0.000	125628	0	1.273	N.D. #
23) L5 AR-1248-3	6.134f	0.000	5377498	0	51.329	N.D. #
24) L5 AR-1248-4	6.467	5.148	24243211	4922253	210.711	120.761 #
25) L5 AR-1248-5	6.568f	5.486	7103420	3061863	62.760	77.050
26) L6 AR-1254-1	6.467	5.486	24243211	3061863	210.778	51.754 #
27) L6 AR-1254-2	6.679	0.000	5680584	0	33.383	N.D. #
28) L6 AR-1254-3	7.060	0.000	2598656	0	14.962	N.D. #
29) L6 AR-1254-4	7.337	0.000	2371719	0	19.000	N.D. #
30) L6 AR-1254-5	7.770	0.000	1423440	0	11.051	N.D. #
31) L7 AR-1260-1	7.222	0.000	3645353	0	27.072	N.D. #
32) L7 AR-1260-2	7.495	6.315	5633242	1040564	36.912	15.313 #
33) L7 AR-1260-3	7.836	6.514	800559	-38154	7.164	N.D. #
34) L7 AR-1260-4	8.069	0.000	1049914	0	8.505	N.D. #
35) L7 AR-1260-5	8.384	7.200	168764	368333	0.707	3.219 #
36) L8 AR-1262-1	7.836	0.000	800559	0	5.305	N.D. #
37) L8 AR-1262-2	8.384	7.200	168764	368333	0.663	3.054 #
38) L8 AR-1262-3	8.769f	7.497	406300	327643	2.376	6.803 #
39) L8 AR-1262-4	8.804	7.529	97716	159062	1.399	1.780 #
40) L8 AR-1262-5	0.000	8.082f	0	519606	N.D.	12.670 #
41) L9 AR-1268-1	8.654f	7.497	632633	327643	2.187	2.291
42) L9 AR-1268-2	8.804	7.529	97716	159062	0.365	1.237 #
43) L9 AR-1268-3	9.040	0.000	774017	0	3.338	N.D. #
44) L9 AR-1268-4	0.000	8.082f	0	519606	N.D.	11.400 #

Data Path : Z:\pestpcbsrv\HPCHEM1\ECD_0\Data\P0082922\
 Data File : P0089153.D
 Signal(s) : Signal #1: ECD1A.ch Signal #2: ECD2B.ch
 Acq On : 30 Aug 2022 06:26
 Operator : YP/AJ
 Sample : I.BLK
 Misc :
 ALS Vial : 2 Sample Multiplier: 1

Instrument :
 ECD_0
 ClientSampleId :
 I.BLK

Integration File signal 1: autoint1.e
 Integration File signal 2: autoint2.e
 Quant Time: Aug 30 07:36:07 2022
 Quant Method : Z:\pestpcbsrv\HPCHEM1\ECD_0\methods\P0082922.M
 Quant Title : GC EXTRACTABLES
 QLast Update : Mon Aug 29 17:48:02 2022
 Response via : Initial Calibration
 Integrator: ChemStation

Volume Inj. : 2 µl
 Signal #1 Phase : ZB-MR1 Signal #2 Phase: ZB-MR2
 Signal #1 Info : 30Mx0.32mmx 0.50µ Signal #2 Info : 30M x 0.32mm x 0.25µm

	Compound	RT#1	RT#2	Resp#1	Resp#2	ng/ml	ng/ml
45)	L9 AR-1268-5	9.902	0.000	417052	0	0.572	N.D. #

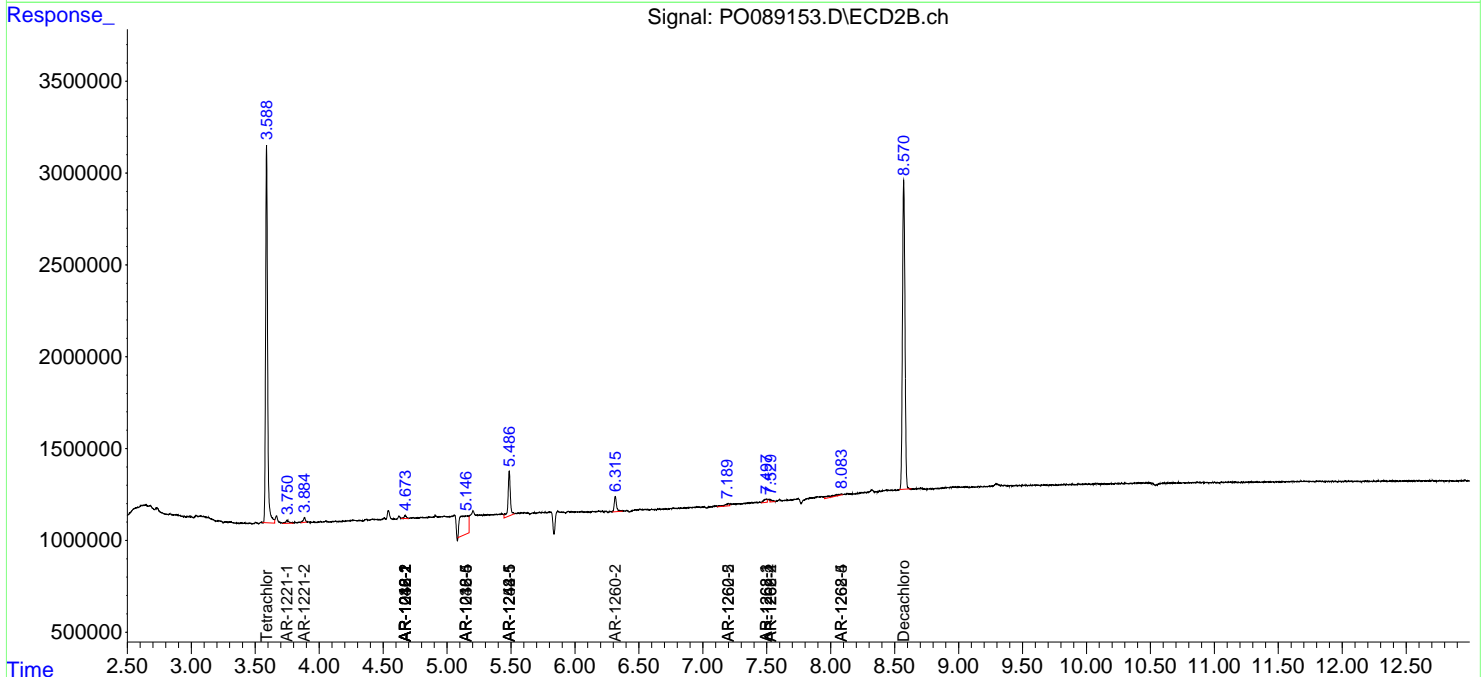
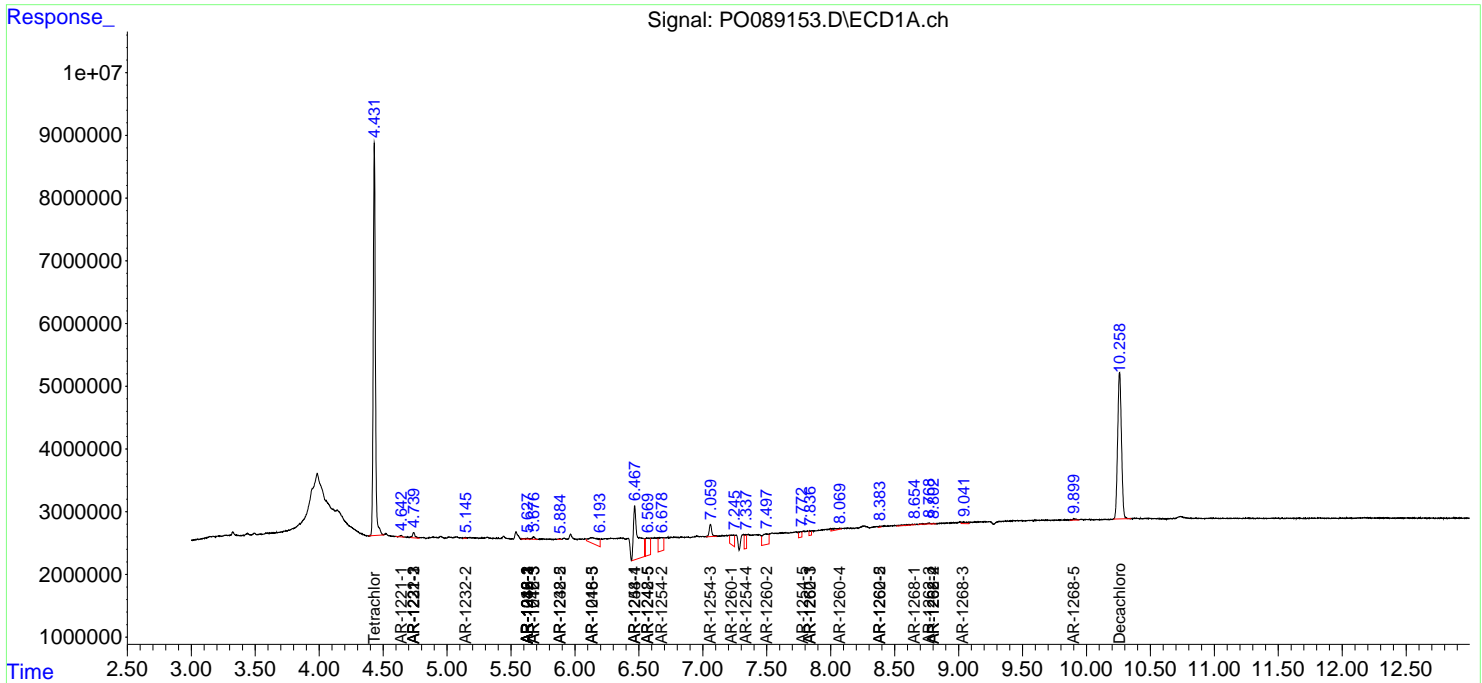
(f)=RT Delta > 1/2 Window (#)=Amounts differ by > 25% (m)=manual int.

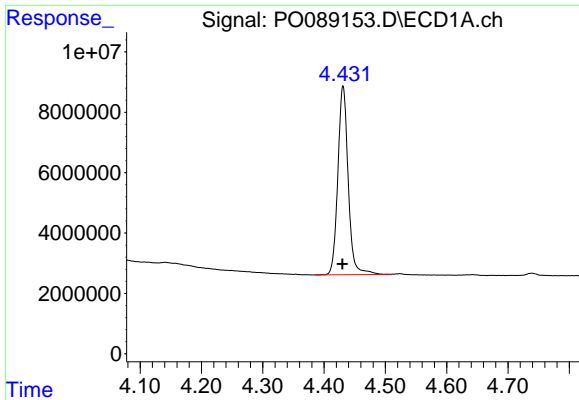
Data Path : Z:\pestpcbsrv\HPCHEM1\ECD_O\Data\PO082922\
 Data File : PO089153.D
 Signal(s) : Signal #1: ECD1A.ch Signal #2: ECD2B.ch
 Acq On : 30 Aug 2022 06:26
 Operator : YP/AJ
 Sample : I.BLK
 Misc :
 ALS Vial : 2 Sample Multiplier: 1

Instrument :
 ECD_O
ClientSampleId :
 I.BLK

Integration File signal 1: autoint1.e
 Integration File signal 2: autoint2.e
 Quant Time: Aug 30 07:36:07 2022
 Quant Method : Z:\pestpcbsrv\HPCHEM1\ECD_O\methods\PO082922.M
 Quant Title : GC EXTRACTABLES
 QLast Update : Mon Aug 29 17:48:02 2022
 Response via : Initial Calibration
 Integrator: ChemStation

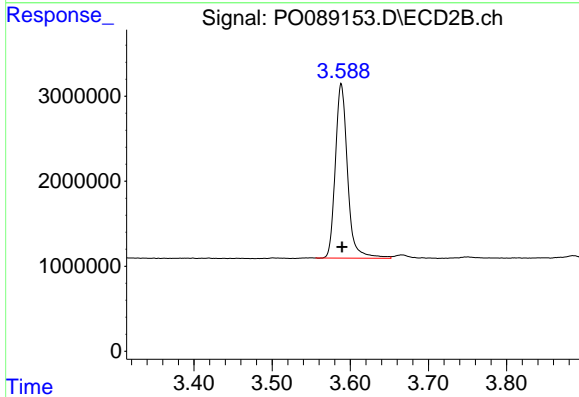
Volume Inj. : 2 µl
 Signal #1 Phase : ZB-MR1 Signal #2 Phase: ZB-MR2
 Signal #1 Info : 30Mx0.32mmx 0.50µ Signal #2 Info : 30M x 0.32mm x 0.25µm



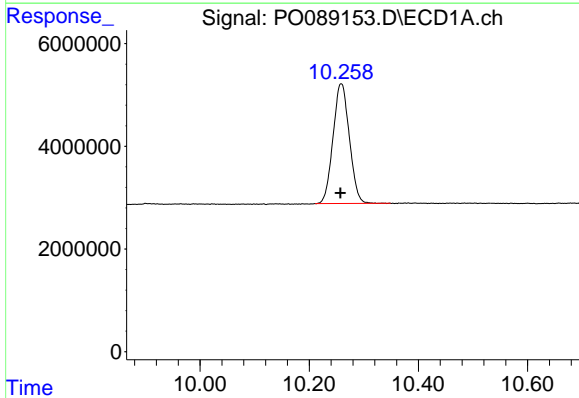


#1 Tetrachloro-m-xylene
R.T.: 4.431 min
Delta R.T.: 0.001 min
Response: 73324504
Conc: 19.56 ng/ml

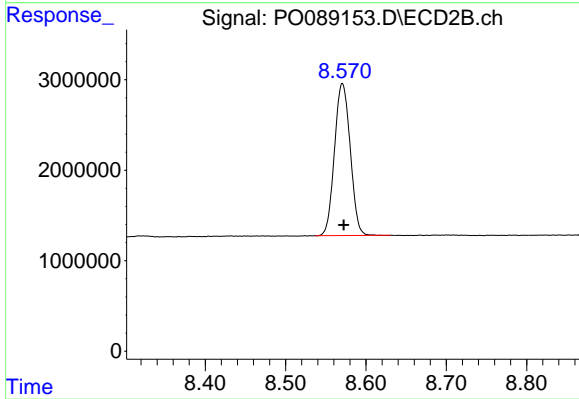
Instrument :
ECD_O
ClientSampleId :
I.BLK



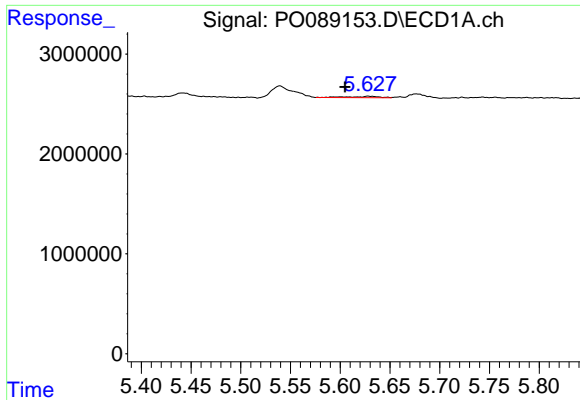
#1 Tetrachloro-m-xylene
R.T.: 3.588 min
Delta R.T.: -0.001 min
Response: 22255950
Conc: 23.06 ng/ml



#2 Decachlorobiphenyl
R.T.: 10.259 min
Delta R.T.: 0.002 min
Response: 48391766
Conc: 21.02 ng/ml



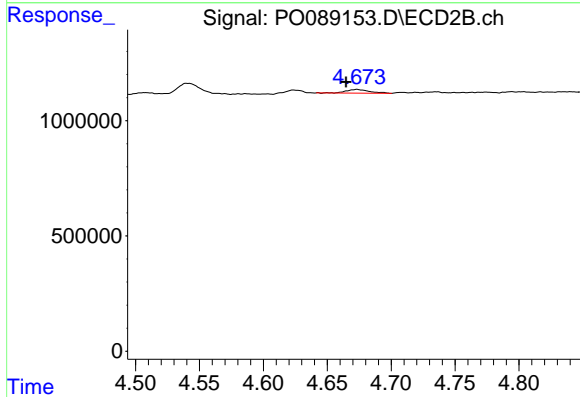
#2 Decachlorobiphenyl
R.T.: 8.571 min
Delta R.T.: -0.001 min
Response: 22851598
Conc: 25.84 ng/ml



#3 AR-1016-1

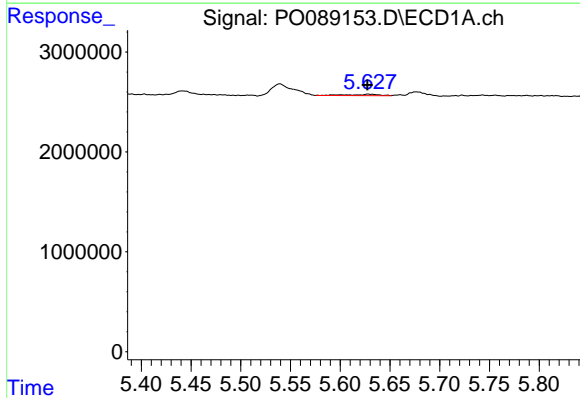
R.T.: 5.628 min
 Delta R.T.: 0.023 min
 Response: 306541
 Conc: 2.73 ng/ml

Instrument :
 ECD_O
 ClientSampleId :
 I.BLK



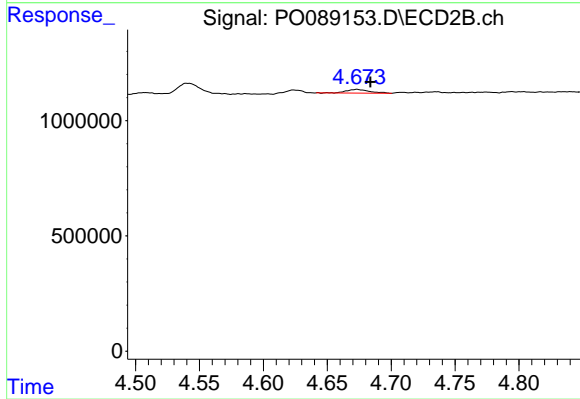
#3 AR-1016-1

R.T.: 4.673 min
 Delta R.T.: 0.008 min
 Response: 208962
 Conc: 5.79 ng/ml



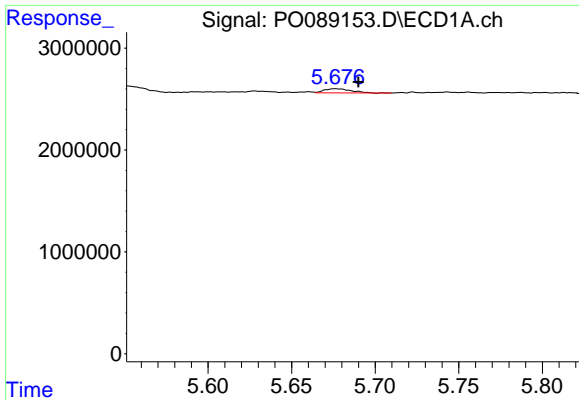
#4 AR-1016-2

R.T.: 5.628 min
 Delta R.T.: 0.000 min
 Response: 306541
 Conc: 1.95 ng/ml



#4 AR-1016-2

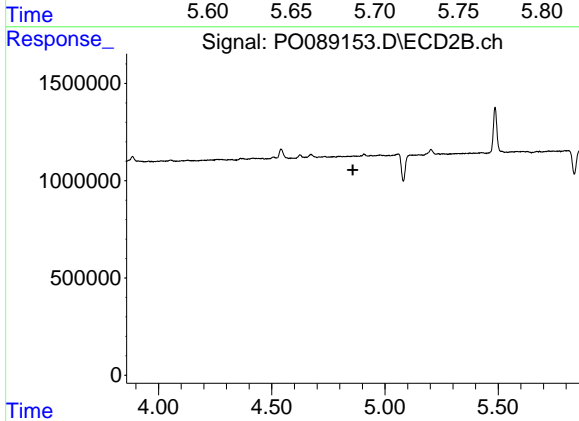
R.T.: 4.673 min
 Delta R.T.: -0.011 min
 Response: 208962
 Conc: 4.23 ng/ml



#5 AR-1016-3

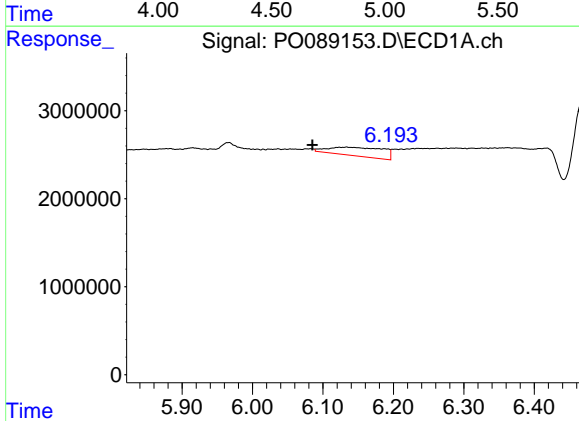
R.T.: 5.676 min
 Delta R.T.: -0.014 min
 Response: 460447
 Conc: 4.72 ng/ml

Instrument :
 ECD_O
 ClientSampleId :
 I.BLK



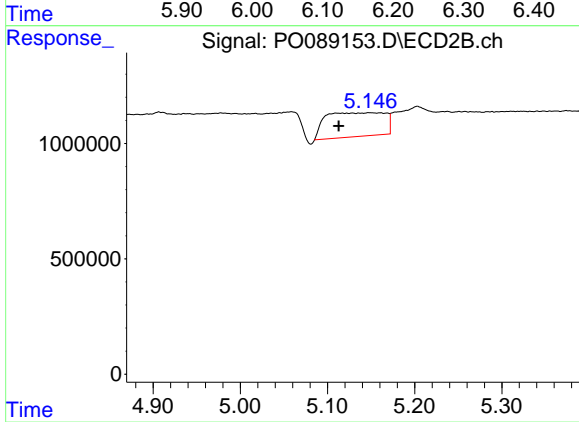
#5 AR-1016-3

R.T.: 0.000 min
 Exp R.T. : 4.858 min
 Response: 0
 Conc: N.D.



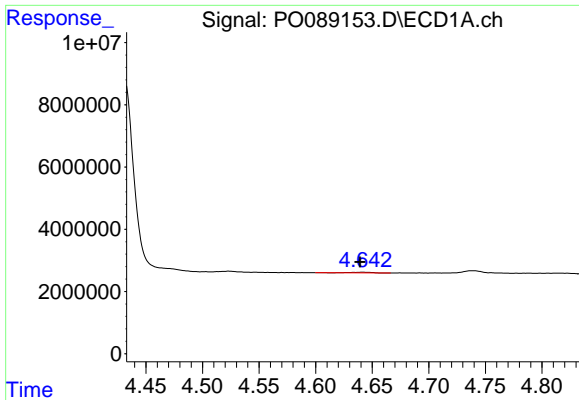
#7 AR-1016-5

R.T.: 6.134 min
 Delta R.T.: 0.048 min
 Response: 5377498
 Conc: 70.07 ng/ml



#7 AR-1016-5

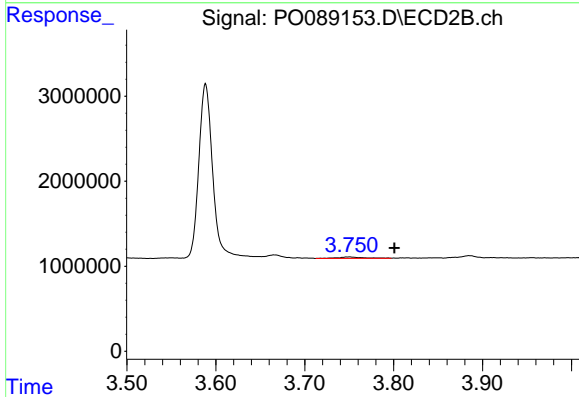
R.T.: 5.148 min
 Delta R.T.: 0.035 min
 Response: 4922253
 Conc: 168.70 ng/ml



#8 AR-1221-1

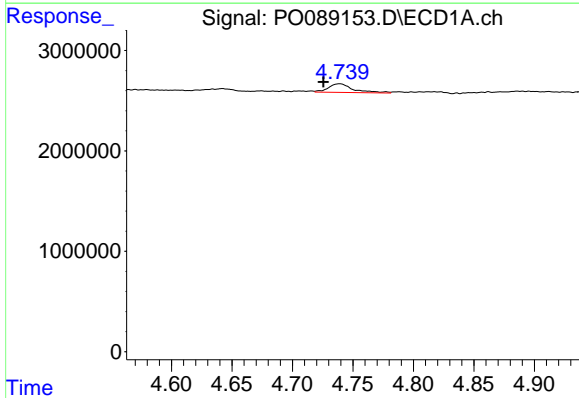
R.T.: 4.642 min
 Delta R.T.: 0.003 min
 Response: 302001
 Conc: 7.10 ng/ml

Instrument :
 ECD_O
 ClientSampleId :
 I.BLK



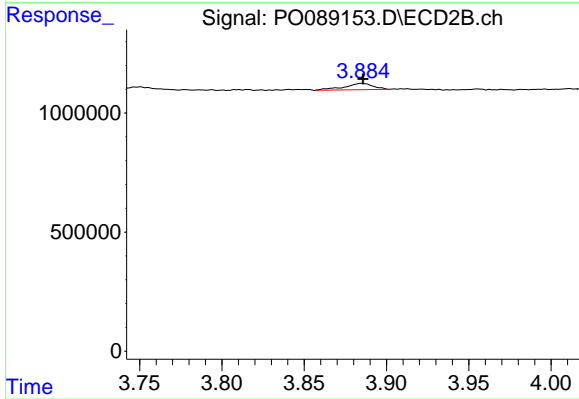
#8 AR-1221-1

R.T.: 3.750 min
 Delta R.T.: -0.051 min
 Response: 313788
 Conc: 27.42 ng/ml



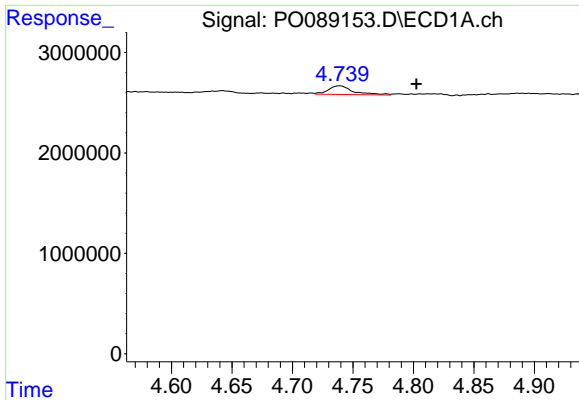
#9 AR-1221-2

R.T.: 4.739 min
 Delta R.T.: 0.013 min
 Response: 1217895
 Conc: 38.98 ng/ml



#9 AR-1221-2

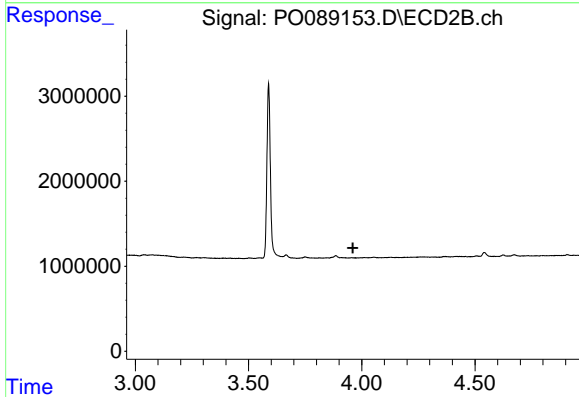
R.T.: 3.885 min
 Delta R.T.: 0.000 min
 Response: 323944
 Conc: 37.04 ng/ml



#10 AR-1221-3

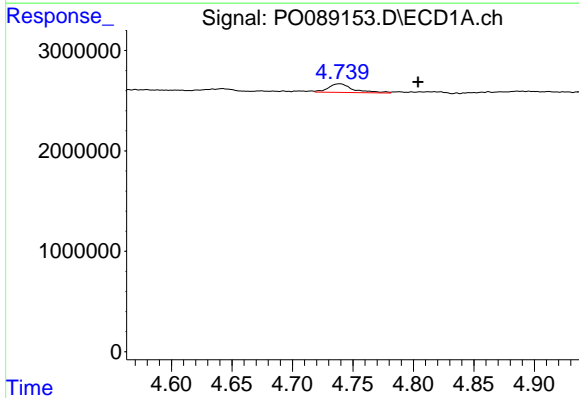
R.T.: 4.739 min
 Delta R.T.: -0.063 min
 Response: 1217895
 Conc: 13.12 ng/ml

Instrument :
 ECD_O
 ClientSampleId :
 I.BLK



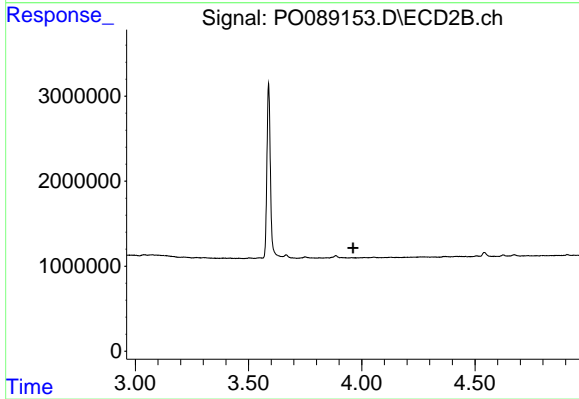
#10 AR-1221-3

R.T.: 0.000 min
 Exp R.T. : 3.961 min
 Response: 0
 Conc: N.D.



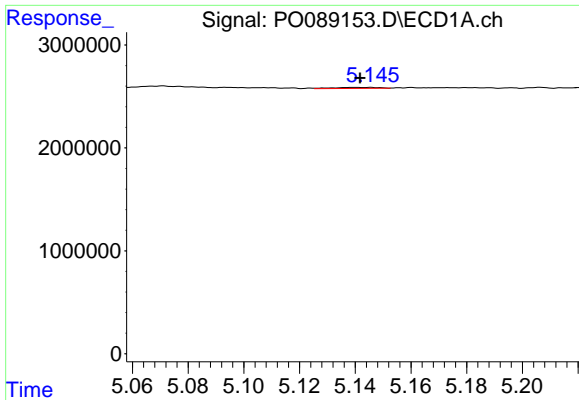
#11 AR-1232-1

R.T.: 4.739 min
 Delta R.T.: -0.065 min
 Response: 1217895
 Conc: 16.56 ng/ml



#11 AR-1232-1

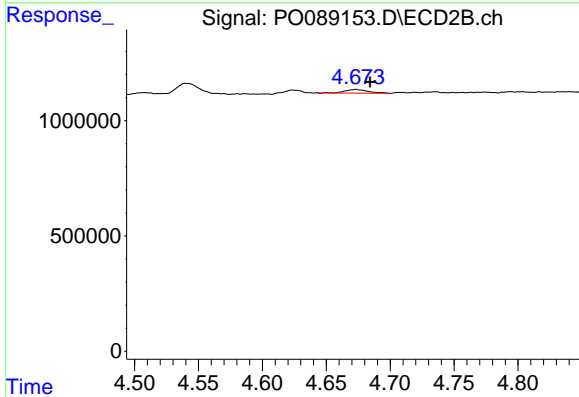
R.T.: 0.000 min
 Exp R.T. : 3.961 min
 Response: 0
 Conc: N.D.



#12 AR-1232-2

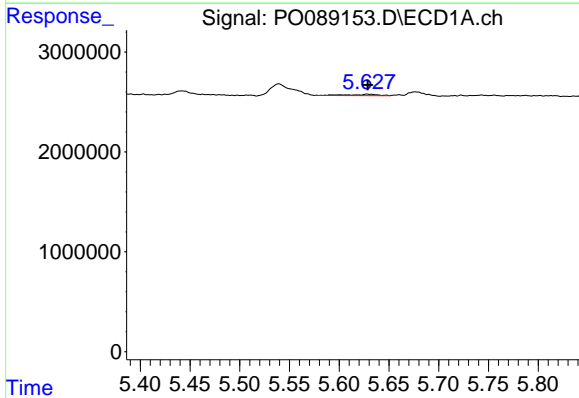
R.T.: 5.145 min
 Delta R.T.: 0.004 min
 Response: 104248
 Conc: 2.78 ng/ml

Instrument :
 ECD_O
 ClientSampleId :
 I.BLK



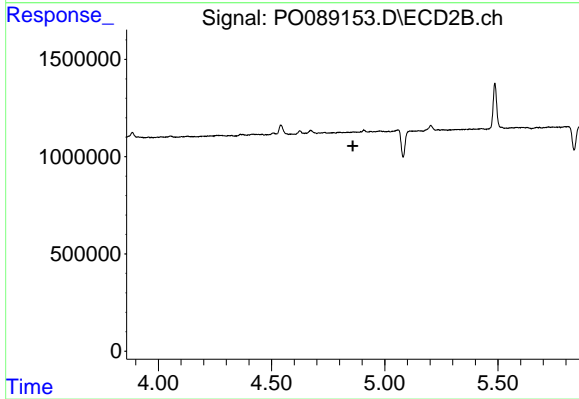
#12 AR-1232-2

R.T.: 4.673 min
 Delta R.T.: -0.011 min
 Response: 208962
 Conc: 9.88 ng/ml



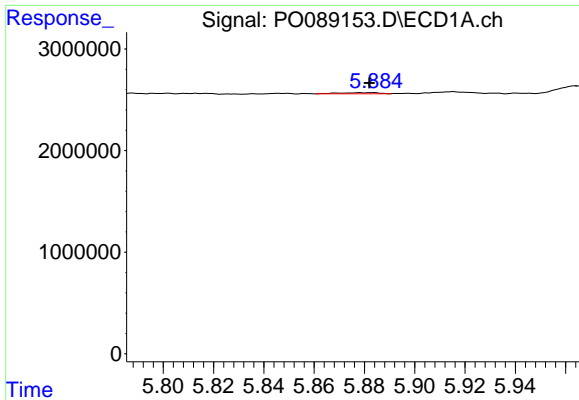
#13 AR-1232-3

R.T.: 5.628 min
 Delta R.T.: 0.000 min
 Response: 306541
 Conc: 4.59 ng/ml



#13 AR-1232-3

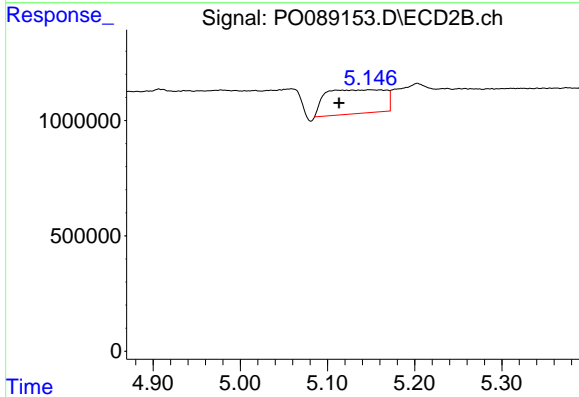
R.T.: 0.000 min
 Exp R.T.: 4.859 min
 Response: 0
 Conc: N.D.



#15 AR-1232-5

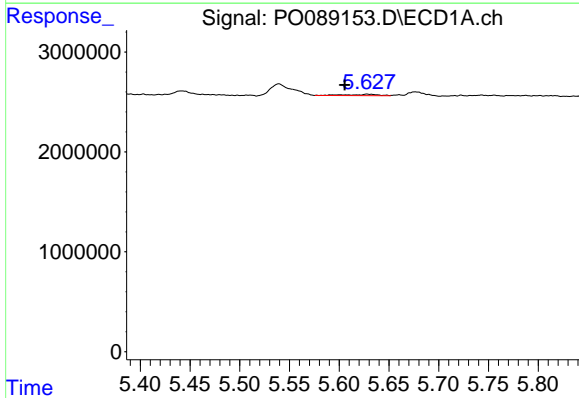
R.T.: 5.883 min
 Delta R.T.: 0.001 min
 Response: 125628
 Conc: 4.65 ng/ml

Instrument :
 ECD_O
 ClientSampleId :
 I.BLK



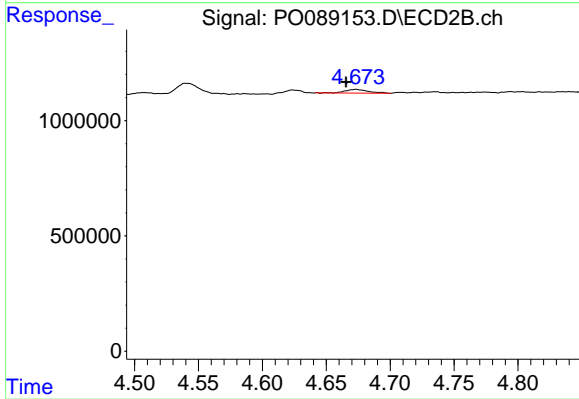
#15 AR-1232-5

R.T.: 5.148 min
 Delta R.T.: 0.034 min
 Response: 4922253
 Conc: 421.74 ng/ml



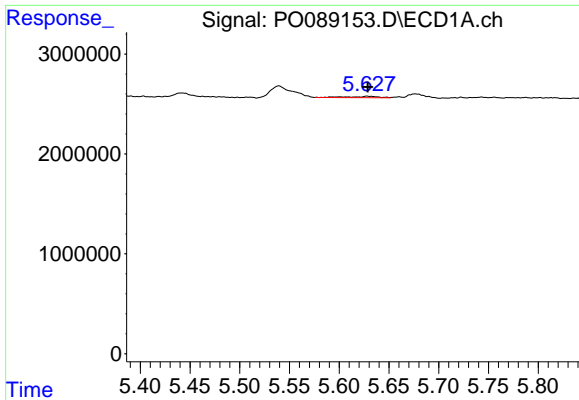
#16 AR-1242-1

R.T.: 5.628 min
 Delta R.T.: 0.022 min
 Response: 306541
 Conc: 3.47 ng/ml



#16 AR-1242-1

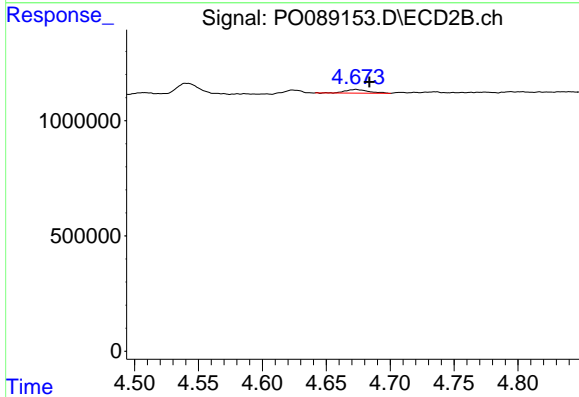
R.T.: 4.673 min
 Delta R.T.: 0.008 min
 Response: 208962
 Conc: 7.17 ng/ml



#17 AR-1242-2

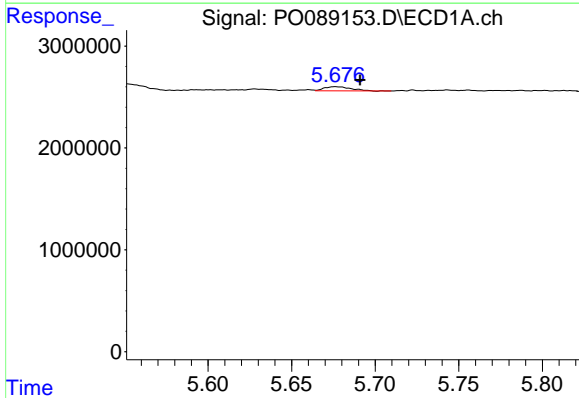
R.T.: 5.628 min
 Delta R.T.: 0.000 min
 Response: 306541
 Conc: 2.48 ng/ml

Instrument :
 ECD_O
 ClientSampleId :
 I.BLK



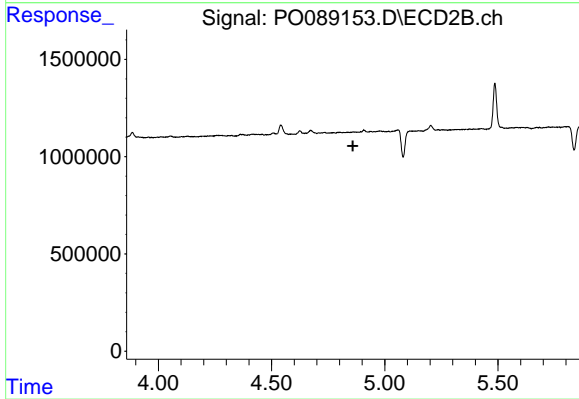
#17 AR-1242-2

R.T.: 4.673 min
 Delta R.T.: -0.011 min
 Response: 208962
 Conc: 5.27 ng/ml



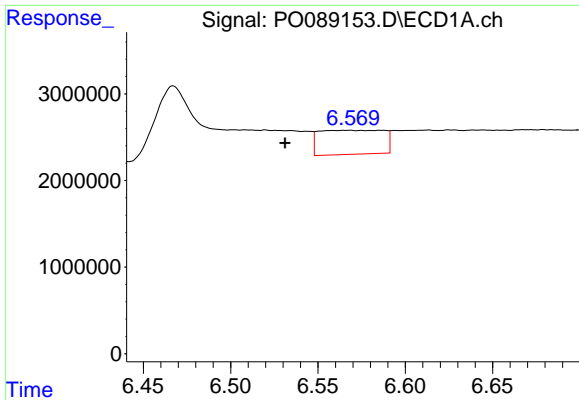
#18 AR-1242-3

R.T.: 5.676 min
 Delta R.T.: -0.015 min
 Response: 460447
 Conc: 5.99 ng/ml



#18 AR-1242-3

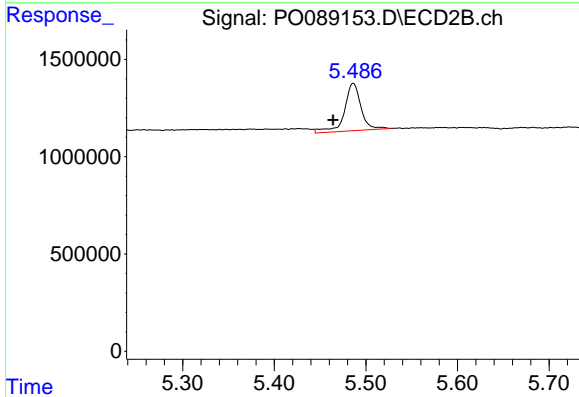
R.T.: 0.000 min
 Exp R.T.: 4.859 min
 Response: 0
 Conc: N.D.



#20 AR-1242-5

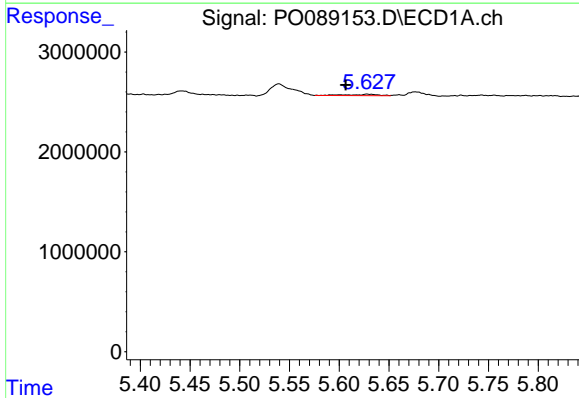
R.T.: 6.568 min
 Delta R.T.: 0.037 min
 Response: 7103420
 Conc: 110.35 ng/ml

Instrument :
 ECD_O
 ClientSampleId :
 I.BLK



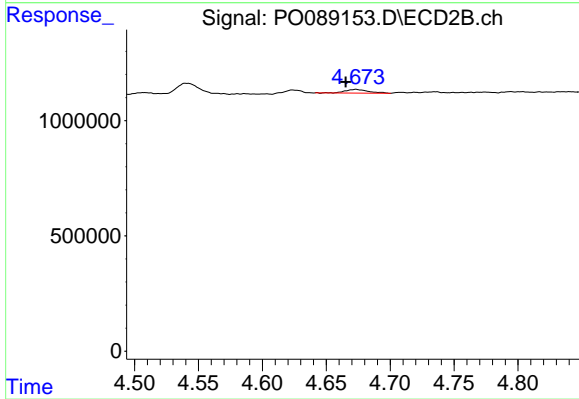
#20 AR-1242-5

R.T.: 5.486 min
 Delta R.T.: 0.022 min
 Response: 3061863
 Conc: 112.09 ng/ml



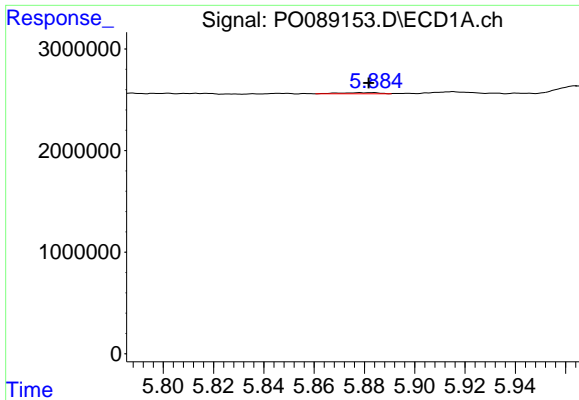
#21 AR-1248-1

R.T.: 5.628 min
 Delta R.T.: 0.021 min
 Response: 306541
 Conc: 4.45 ng/ml



#21 AR-1248-1

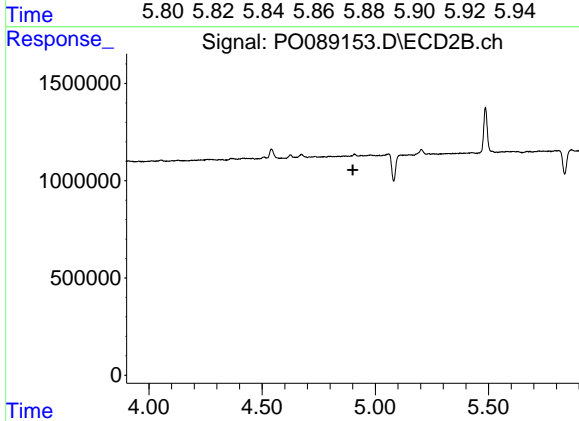
R.T.: 4.673 min
 Delta R.T.: 0.008 min
 Response: 208962
 Conc: 9.30 ng/ml



#22 AR-1248-2

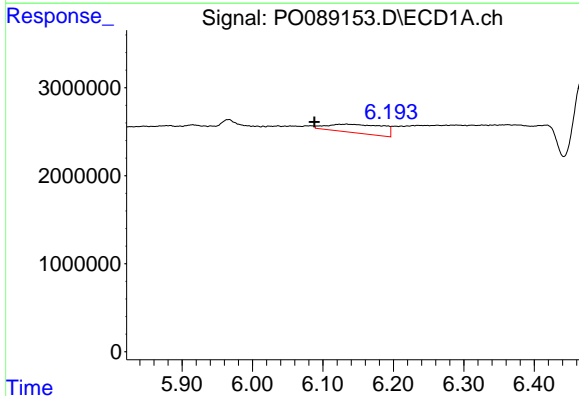
R.T.: 5.883 min
 Delta R.T.: 0.001 min
 Response: 125628
 Conc: 1.27 ng/ml

Instrument :
 ECD_O
 ClientSampleId :
 I.BLK



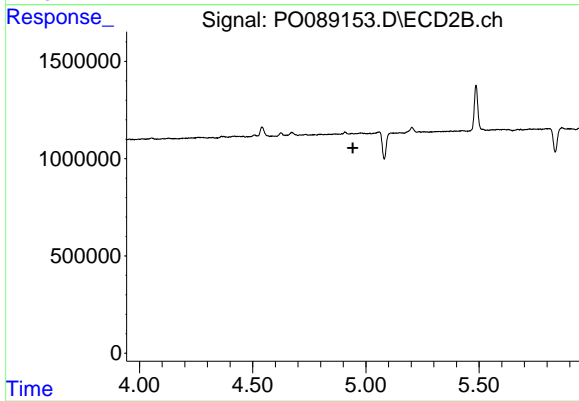
#22 AR-1248-2

R.T.: 0.000 min
 Exp R.T. : 4.901 min
 Response: 0
 Conc: N.D.



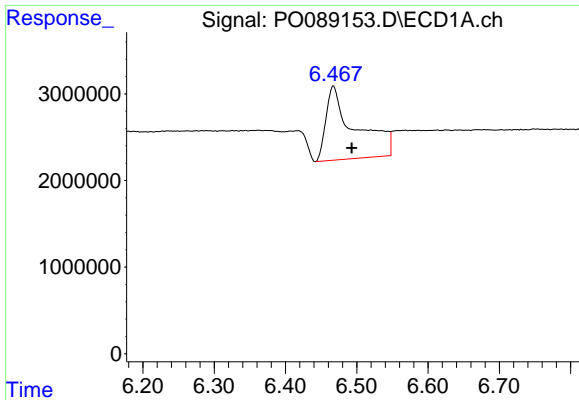
#23 AR-1248-3

R.T.: 6.134 min
 Delta R.T.: 0.046 min
 Response: 5377498
 Conc: 51.33 ng/ml



#23 AR-1248-3

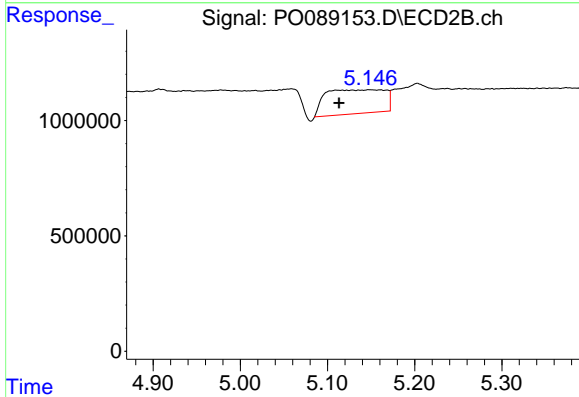
R.T.: 0.000 min
 Exp R.T. : 4.943 min
 Response: 0
 Conc: N.D.



#24 AR-1248-4

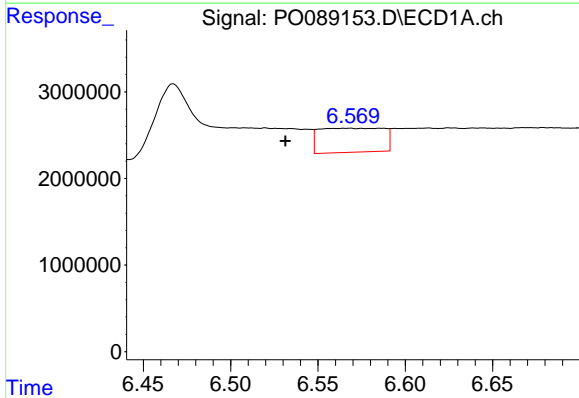
R.T.: 6.467 min
 Delta R.T.: -0.026 min
 Response: 24243211
 Conc: 210.71 ng/ml

Instrument :
 ECD_O
 ClientSampleId :
 I.BLK



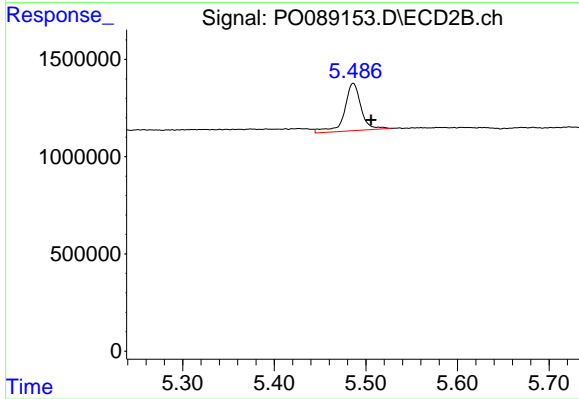
#24 AR-1248-4

R.T.: 5.148 min
 Delta R.T.: 0.035 min
 Response: 4922253
 Conc: 120.76 ng/ml



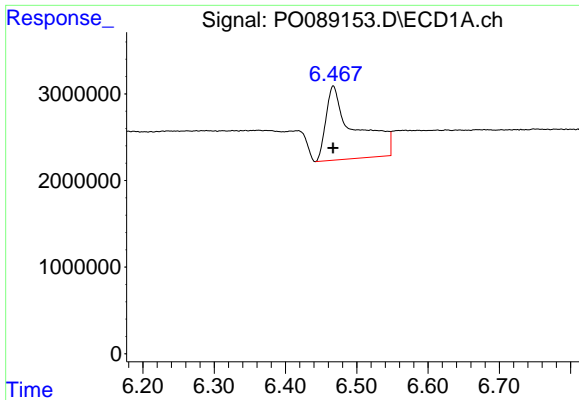
#25 AR-1248-5

R.T.: 6.568 min
 Delta R.T.: 0.037 min
 Response: 7103420
 Conc: 62.76 ng/ml



#25 AR-1248-5

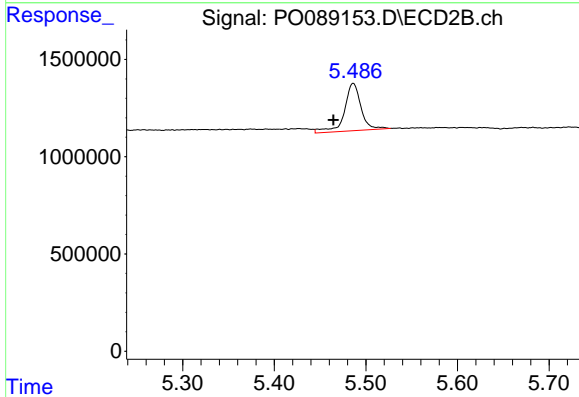
R.T.: 5.486 min
 Delta R.T.: -0.019 min
 Response: 3061863
 Conc: 77.05 ng/ml



#26 AR-1254-1

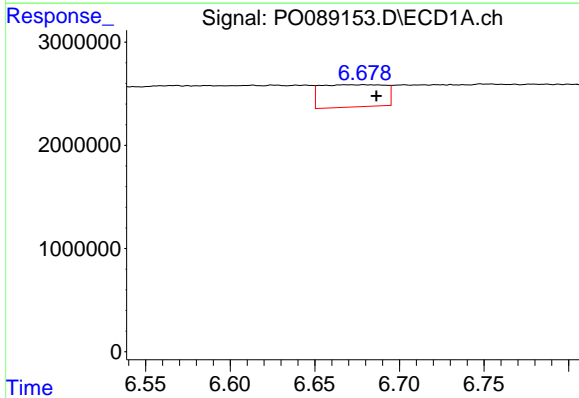
R.T.: 6.467 min
 Delta R.T.: 0.000 min
 Response: 24243211
 Conc: 210.78 ng/ml

Instrument :
 ECD_O
 ClientSampleId :
 I.BLK



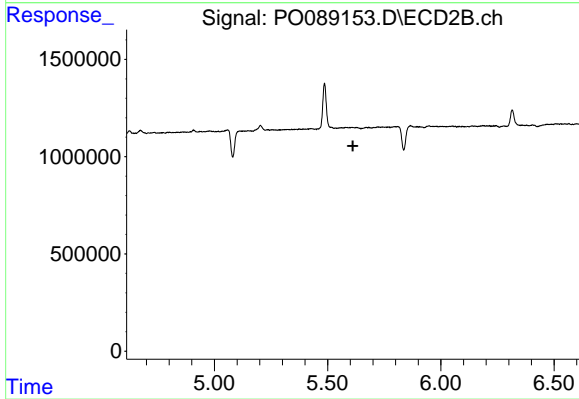
#26 AR-1254-1

R.T.: 5.486 min
 Delta R.T.: 0.021 min
 Response: 3061863
 Conc: 51.75 ng/ml



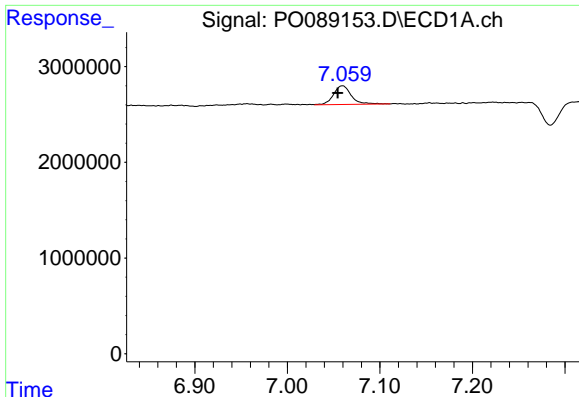
#27 AR-1254-2

R.T.: 6.679 min
 Delta R.T.: -0.007 min
 Response: 5680584
 Conc: 33.38 ng/ml



#27 AR-1254-2

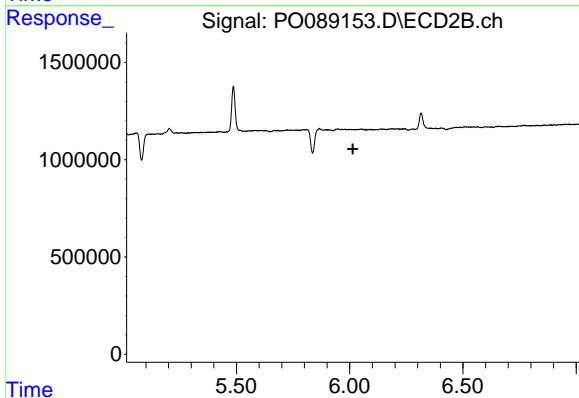
R.T.: 0.000 min
 Exp R.T.: 5.612 min
 Response: 0
 Conc: N.D.



#28 AR-1254-3

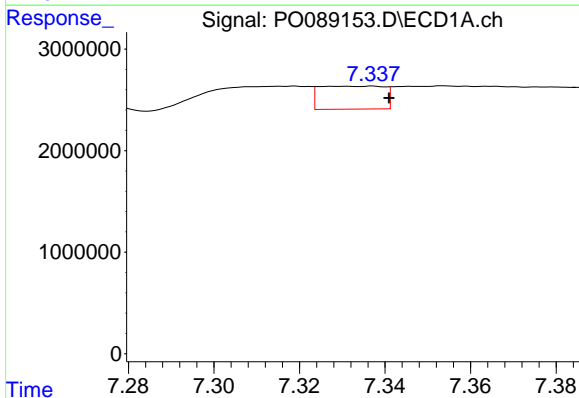
R.T.: 7.060 min
 Delta R.T.: 0.005 min
 Response: 2598656
 Conc: 14.96 ng/ml

Instrument :
 ECD_O
 ClientSampleId :
 I.BLK



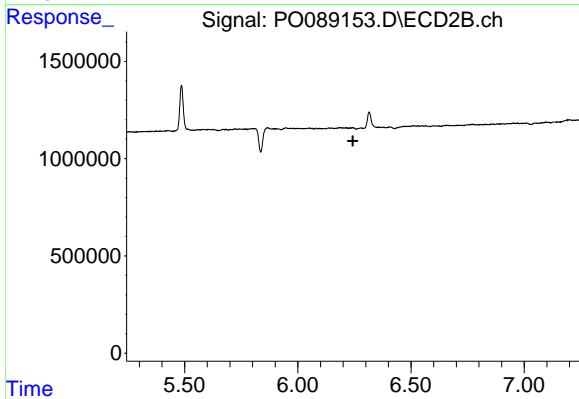
#28 AR-1254-3

R.T.: 0.000 min
 Exp R.T. : 6.014 min
 Response: 0
 Conc: N.D.



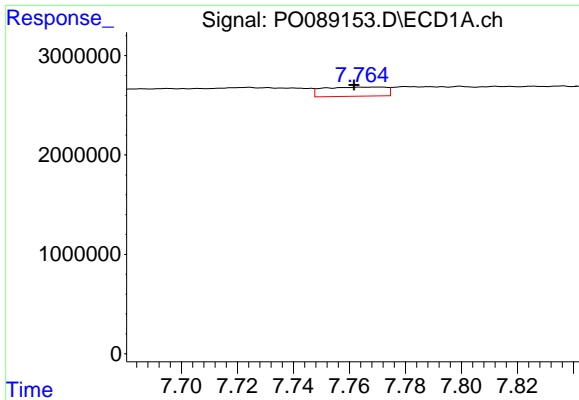
#29 AR-1254-4

R.T.: 7.337 min
 Delta R.T.: -0.004 min
 Response: 2371719
 Conc: 19.00 ng/ml



#29 AR-1254-4

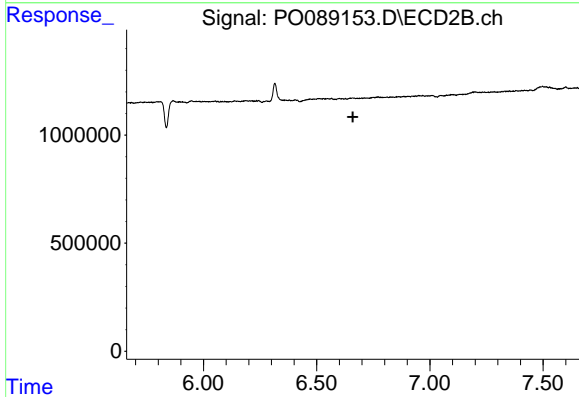
R.T.: 0.000 min
 Exp R.T. : 6.243 min
 Response: 0
 Conc: N.D.



#30 AR-1254-5

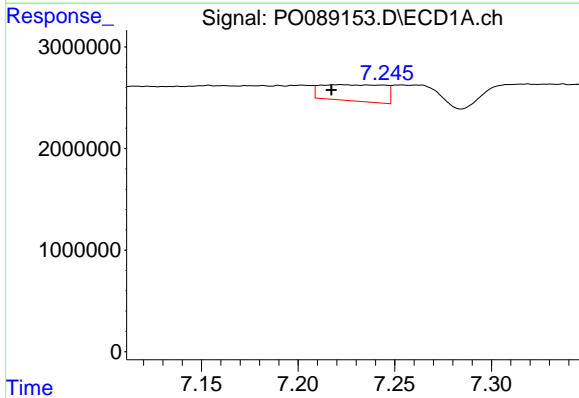
R.T.: 7.770 min
 Delta R.T.: 0.008 min
 Response: 1423440
 Conc: 11.05 ng/ml

Instrument :
 ECD_O
 ClientSampleId :
 I.BLK



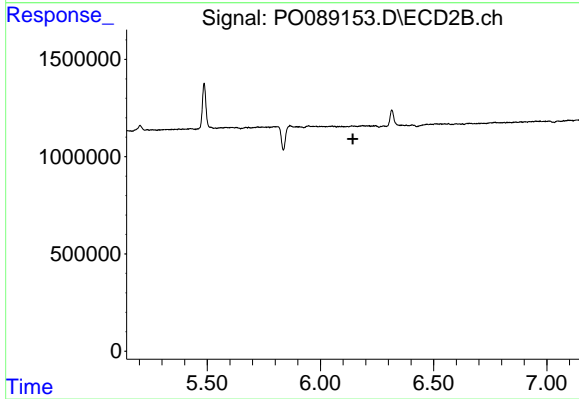
#30 AR-1254-5

R.T.: 0.000 min
 Exp R.T. : 6.660 min
 Response: 0
 Conc: N.D.



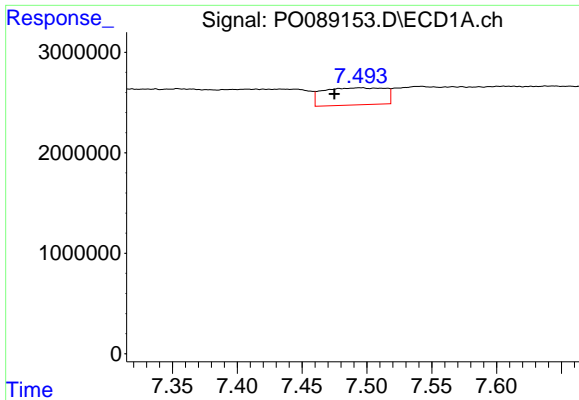
#31 AR-1260-1

R.T.: 7.222 min
 Delta R.T.: 0.005 min
 Response: 3645353
 Conc: 27.07 ng/ml



#31 AR-1260-1

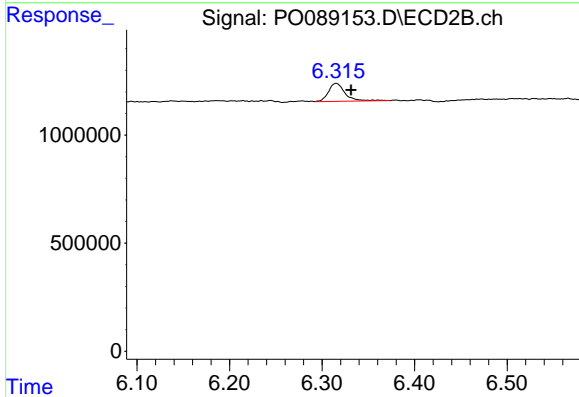
R.T.: 0.000 min
 Exp R.T. : 6.143 min
 Response: 0
 Conc: N.D.



#32 AR-1260-2

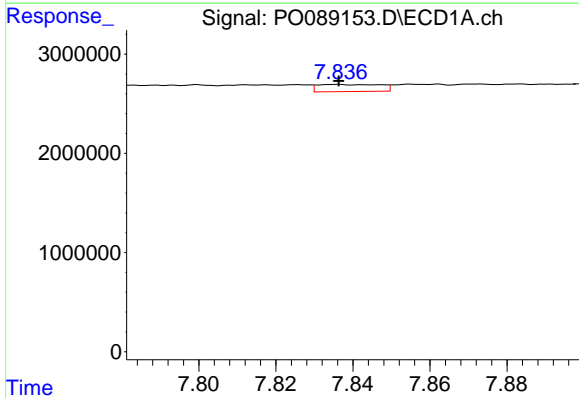
R.T.: 7.495 min
 Delta R.T.: 0.020 min
 Response: 5633242
 Conc: 36.91 ng/ml

Instrument :
 ECD_O
 ClientSampleId :
 I.BLK



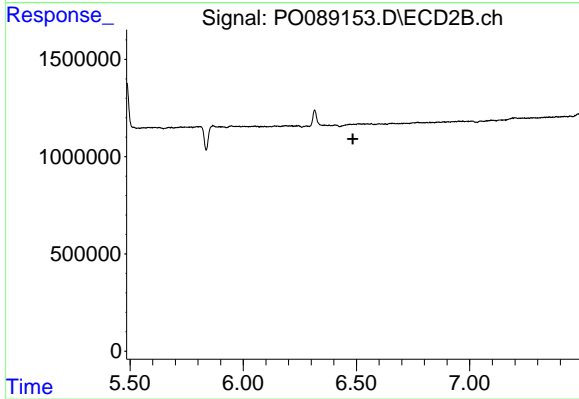
#32 AR-1260-2

R.T.: 6.315 min
 Delta R.T.: -0.016 min
 Response: 1040564
 Conc: 15.31 ng/ml



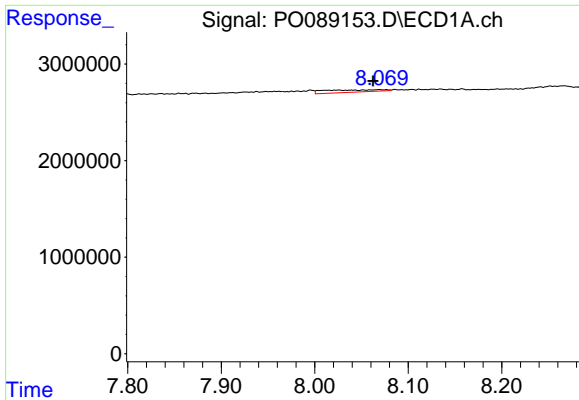
#33 AR-1260-3

R.T.: 7.836 min
 Delta R.T.: 0.000 min
 Response: 800559
 Conc: 7.16 ng/ml



#33 AR-1260-3

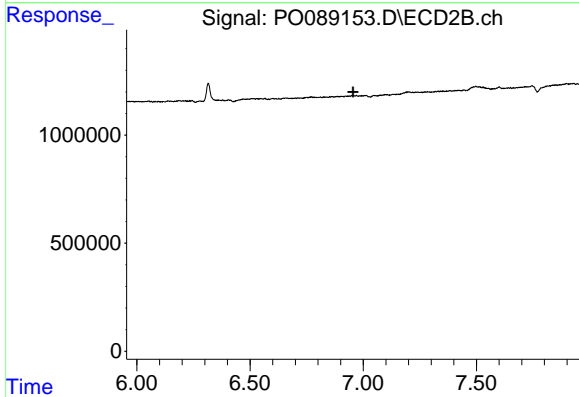
R.T.: 6.514 min
 Delta R.T.: 0.029 min
 Response: -38154
 Conc: N.D.



#34 AR-1260-4

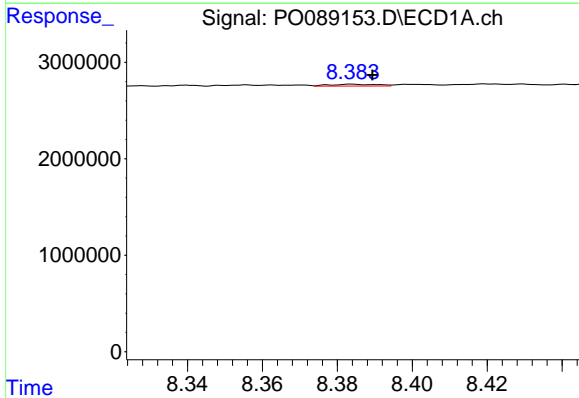
R.T.: 8.069 min
 Delta R.T.: 0.007 min
 Response: 1049914
 Conc: 8.50 ng/ml

Instrument :
 ECD_O
 ClientSampleId :
 I.BLK



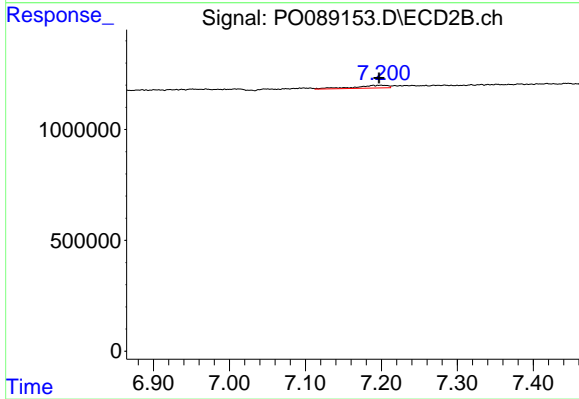
#34 AR-1260-4

R.T.: 0.000 min
 Exp R.T. : 6.955 min
 Response: 0
 Conc: N.D.



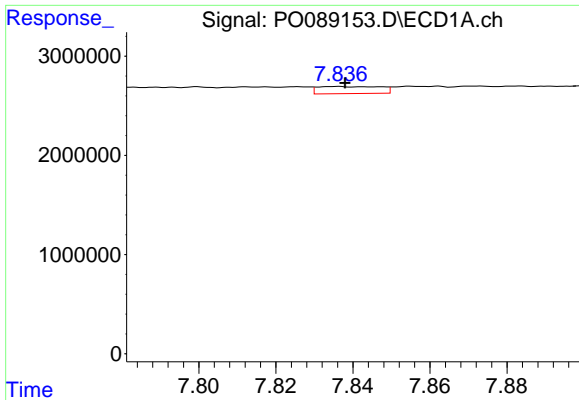
#35 AR-1260-5

R.T.: 8.384 min
 Delta R.T.: -0.006 min
 Response: 168764
 Conc: 0.71 ng/ml



#35 AR-1260-5

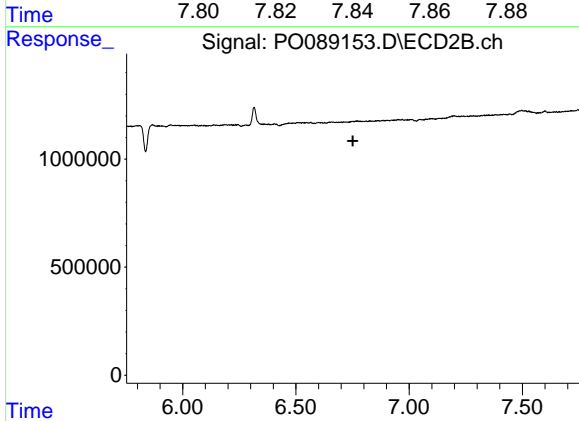
R.T.: 7.200 min
 Delta R.T.: 0.002 min
 Response: 368333
 Conc: 3.22 ng/ml



#36 AR-1262-1

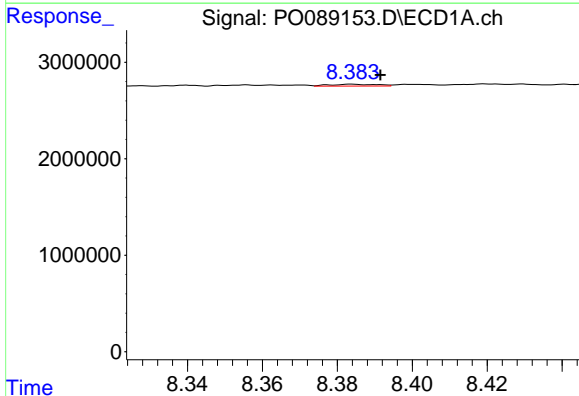
R.T.: 7.836 min
 Delta R.T.: -0.002 min
 Response: 800559
 Conc: 5.31 ng/ml

Instrument :
 ECD_O
 ClientSampleId :
 I.BLK



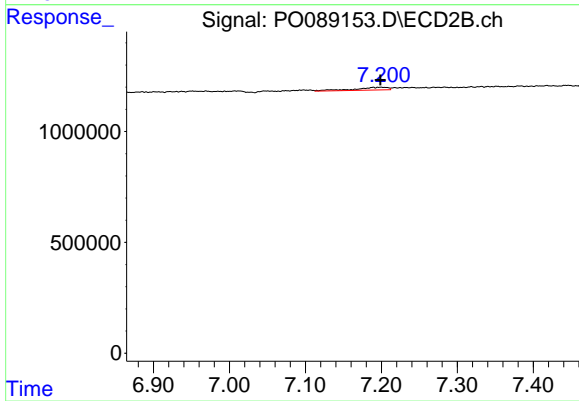
#36 AR-1262-1

R.T.: 0.000 min
 Exp R.T. : 6.751 min
 Response: 0
 Conc: N.D.



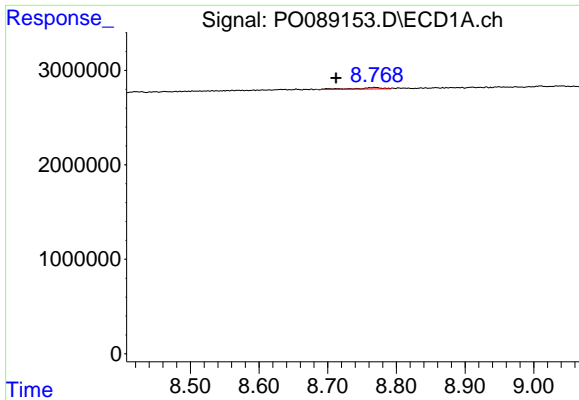
#37 AR-1262-2

R.T.: 8.384 min
 Delta R.T.: -0.008 min
 Response: 168764
 Conc: 0.66 ng/ml



#37 AR-1262-2

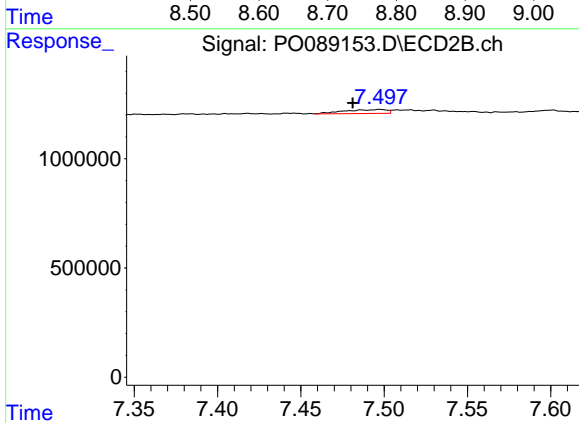
R.T.: 7.200 min
 Delta R.T.: 0.000 min
 Response: 368333
 Conc: 3.05 ng/ml



#38 AR-1262-3

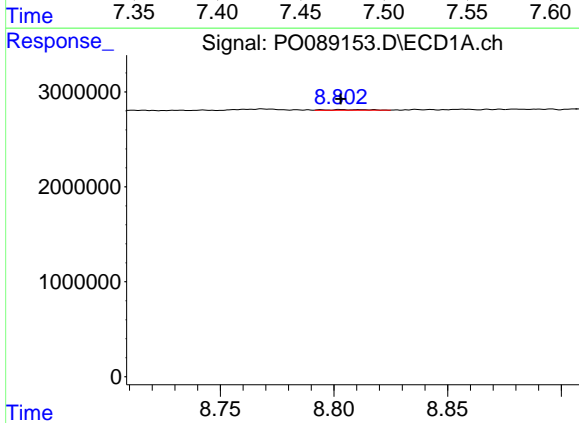
R.T.: 8.769 min
 Delta R.T.: 0.057 min
 Response: 406300
 Conc: 2.38 ng/ml

Instrument :
 ECD_O
 ClientSampleId :
 I.BLK



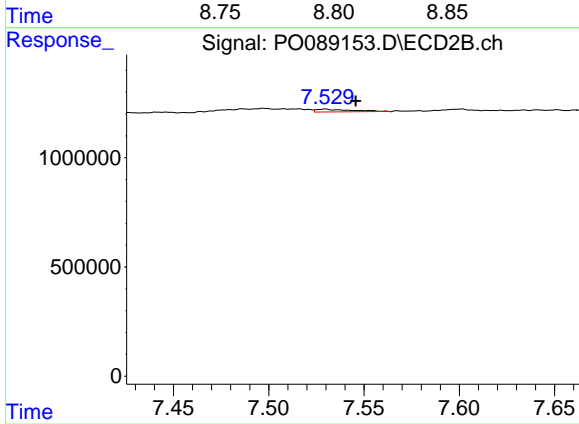
#38 AR-1262-3

R.T.: 7.497 min
 Delta R.T.: 0.016 min
 Response: 327643
 Conc: 6.80 ng/ml



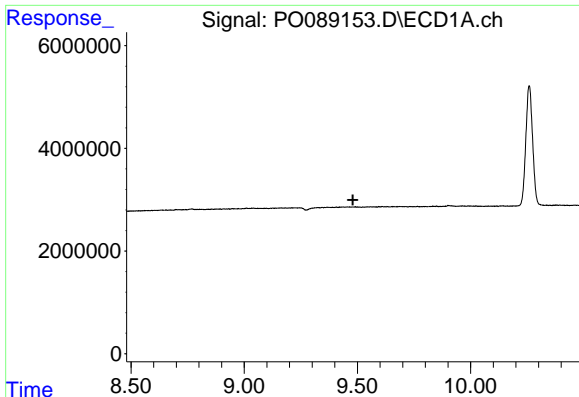
#39 AR-1262-4

R.T.: 8.804 min
 Delta R.T.: 0.001 min
 Response: 97716
 Conc: 1.40 ng/ml



#39 AR-1262-4

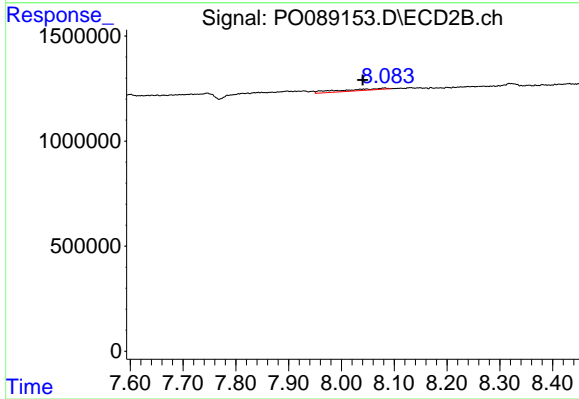
R.T.: 7.529 min
 Delta R.T.: -0.016 min
 Response: 159062
 Conc: 1.78 ng/ml



#40 AR-1262-5

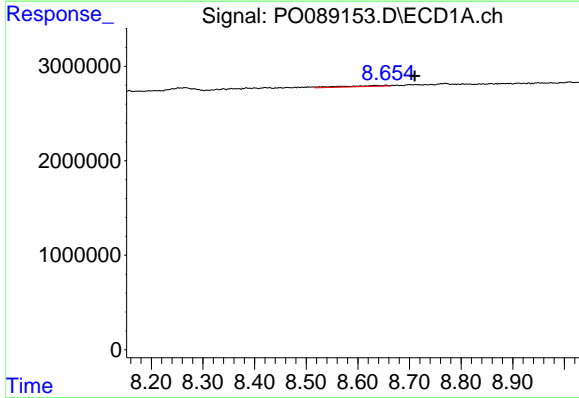
R.T.: 0.000 min
 Exp R.T.: 9.480 min
 Response: 0
 Conc: N.D.

Instrument :
 ECD_O
 ClientSampleId :
 I.BLK



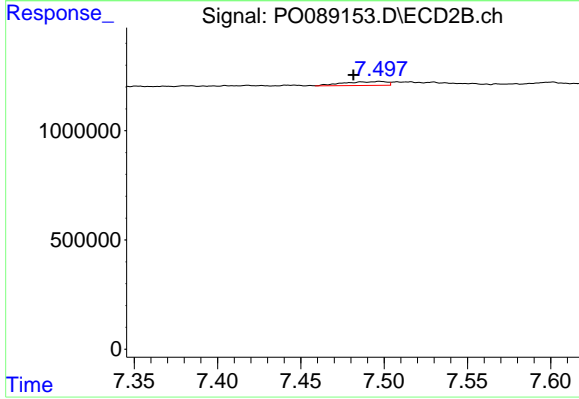
#40 AR-1262-5

R.T.: 8.082 min
 Delta R.T.: 0.042 min
 Response: 519606
 Conc: 12.67 ng/ml



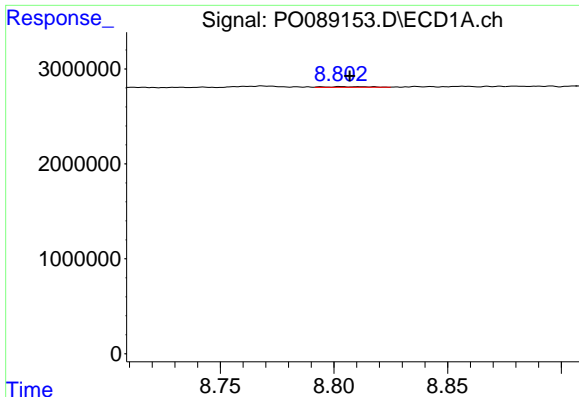
#41 AR-1268-1

R.T.: 8.654 min
 Delta R.T.: -0.056 min
 Response: 632633
 Conc: 2.19 ng/ml



#41 AR-1268-1

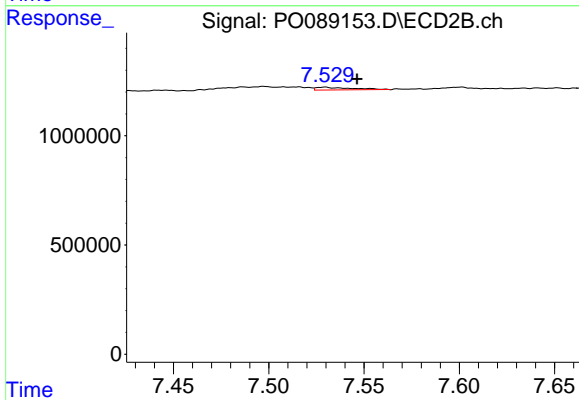
R.T.: 7.497 min
 Delta R.T.: 0.016 min
 Response: 327643
 Conc: 2.29 ng/ml



#42 AR-1268-2

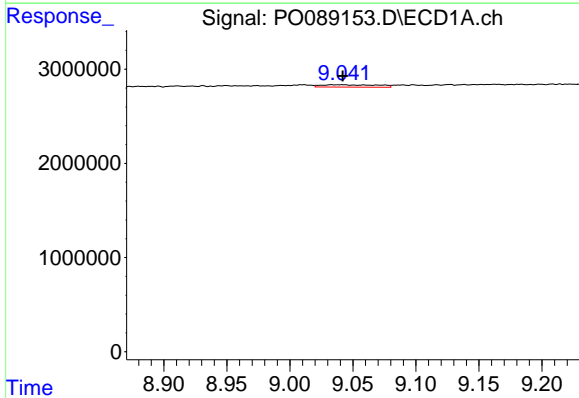
R.T.: 8.804 min
 Delta R.T.: -0.003 min
 Response: 97716
 Conc: 0.37 ng/ml

Instrument :
 ECD_O
 ClientSampleId :
 I.BLK



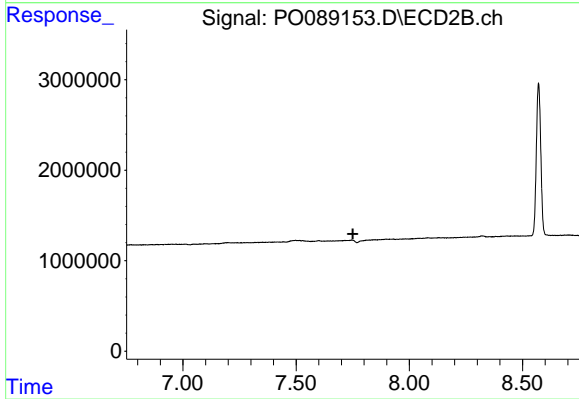
#42 AR-1268-2

R.T.: 7.529 min
 Delta R.T.: -0.017 min
 Response: 159062
 Conc: 1.24 ng/ml



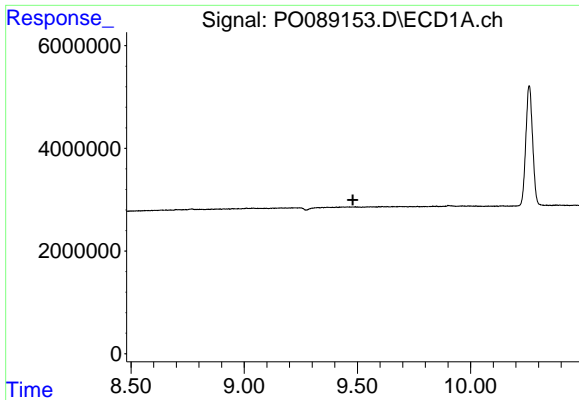
#43 AR-1268-3

R.T.: 9.040 min
 Delta R.T.: -0.002 min
 Response: 774017
 Conc: 3.34 ng/ml



#43 AR-1268-3

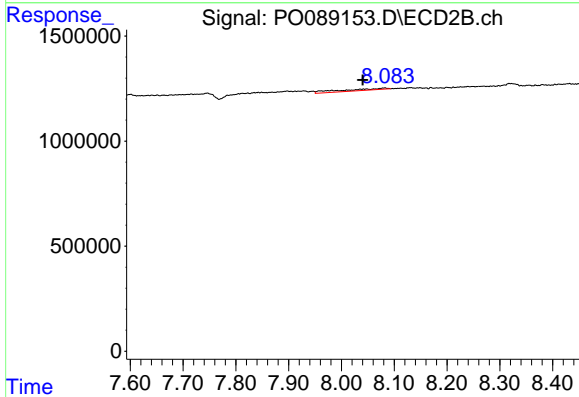
R.T.: 0.000 min
 Exp R.T. : 7.751 min
 Response: 0
 Conc: N.D.



#44 AR-1268-4

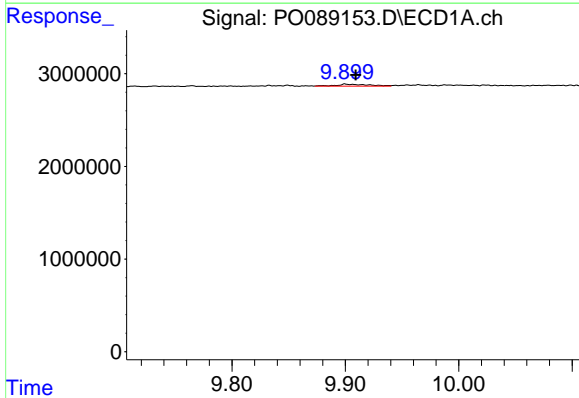
R.T.: 0.000 min
 Exp R.T.: 9.480 min
 Response: 0
 Conc: N.D.

Instrument :
 ECD_O
 ClientSampleId :
 I.BLK



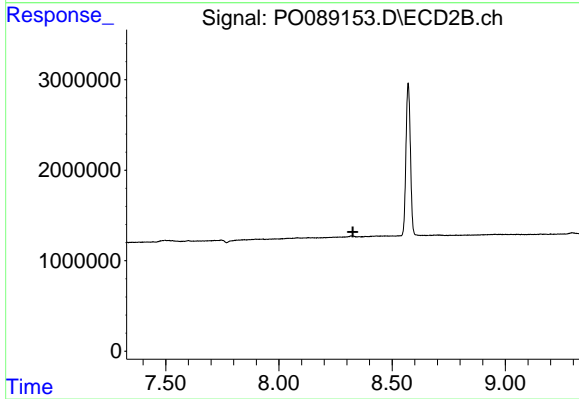
#44 AR-1268-4

R.T.: 8.082 min
 Delta R.T.: 0.041 min
 Response: 519606
 Conc: 11.40 ng/ml



#45 AR-1268-5

R.T.: 9.902 min
 Delta R.T.: -0.008 min
 Response: 417052
 Conc: 0.57 ng/ml



#45 AR-1268-5

R.T.: 0.000 min
 Exp R.T.: 8.326 min
 Response: 0
 Conc: N.D.