

Data Path : Z:\pestpcbsrv\HPCHEM1\ECD_O\Data\P0082922\
 Data File : P0089114.D
 Signal(s) : Signal #1: ECD1A.ch Signal #2: ECD2B.ch
 Acq On : 29 Aug 2022 17:37
 Operator : YP/AJ
 Sample : P0082922ICV500
 Misc :
 ALS Vial : 31 Sample Multiplier: 1

Instrument :
 ECD_O
ClientSampleId :
 ICVPO082922

Integration File signal 1: autoint1.e
 Integration File signal 2: autoint2.e
 Quant Time: Aug 29 17:52:13 2022
 Quant Method : Z:\pestpcbsrv\HPCHEM1\ECD_O\methods\P0082922.M
 Quant Title : GC EXTRACTABLES
 QLast Update : Mon Aug 29 17:48:02 2022
 Response via : Initial Calibration
 Integrator: ChemStation

Volume Inj. : 2 µl
 Signal #1 Phase : ZB-MR1 Signal #2 Phase: ZB-MR2
 Signal #1 Info : 30Mx0.32mmx 0.50µ Signal #2 Info : 30M x 0.32mm x 0.25µm

Compound	RT#1	RT#2	Resp#1	Resp#2	ng/ml	ng/ml

System Monitoring Compounds						
1) SA Tetrachlo...	4.433	3.590	175.4E6	52684557	46.769	54.580
2) SA Decachlor...	10.262	8.574	103.8E6	44553296	45.085	50.383
Target Compounds						
3) L1 AR-1016-1	5.608	4.665	52725597	18796017	468.939	520.475
4) L1 AR-1016-2	5.630	4.684	73294112	25771524	465.069	522.015
5) L1 AR-1016-3	5.693	4.859	45890459	14254669	470.537	535.947
6) L1 AR-1016-4	5.793	4.901	37082583	11392431	471.269	529.308
7) L1 AR-1016-5	6.089	5.113	36382759	15043892	474.082	515.594
31) L7 AR-1260-1	7.221	6.143	61783947	28392014	458.831	506.066
32) L7 AR-1260-2	7.479	6.333	71161051	33734295	466.282	496.442
33) L7 AR-1260-3	7.840	6.484	52435786	30944726	469.261	504.365
34) L7 AR-1260-4	8.067	6.956	58009936	25035305	469.910	496.807
35) L7 AR-1260-5	8.394	7.198	111.1E6	55941866	465.803	488.935

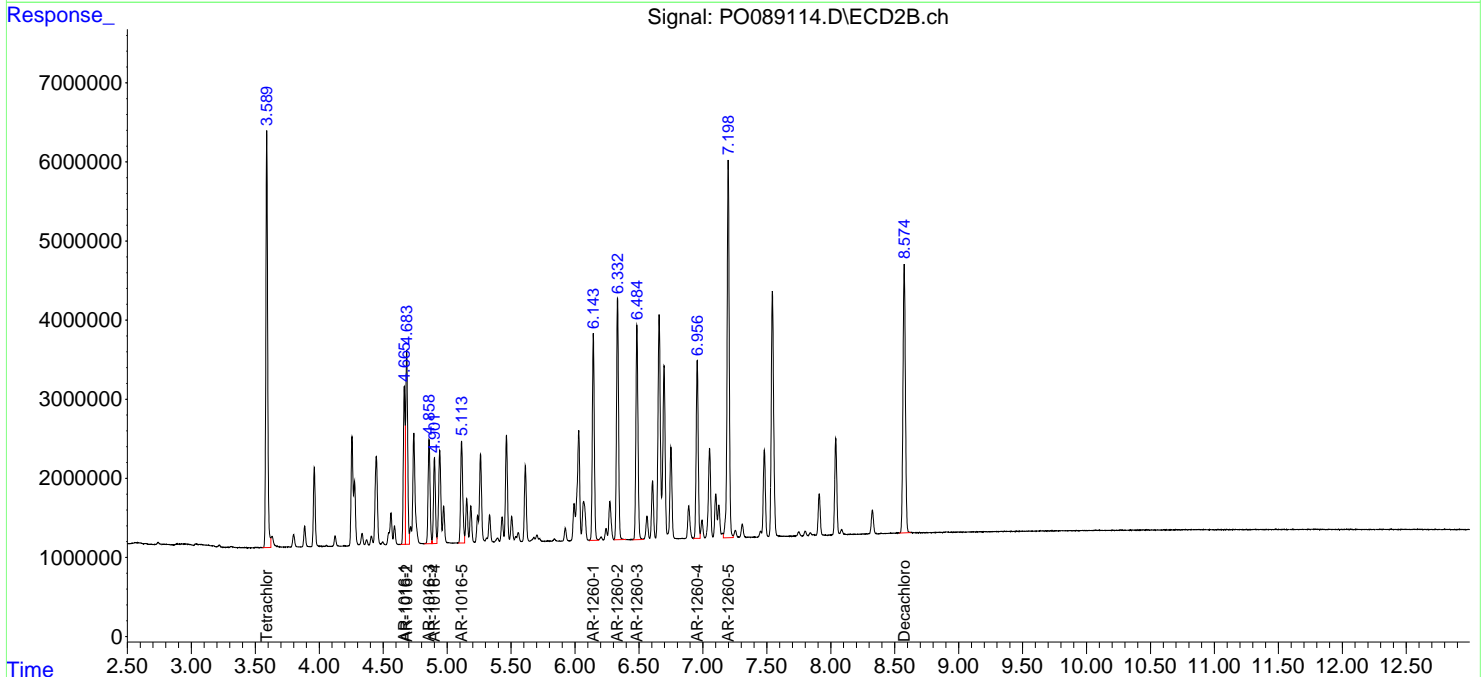
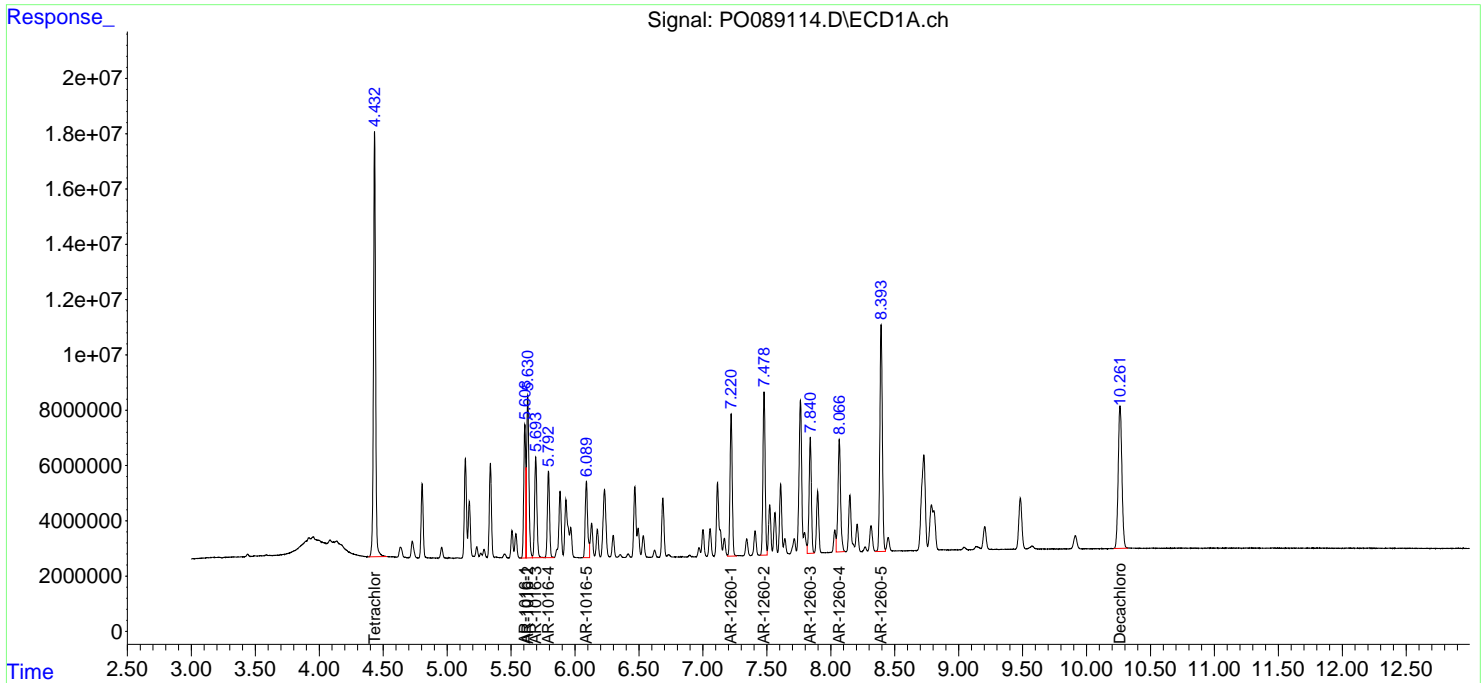
(f)=RT Delta > 1/2 Window (#)=Amounts differ by > 25% (m)=manual int.

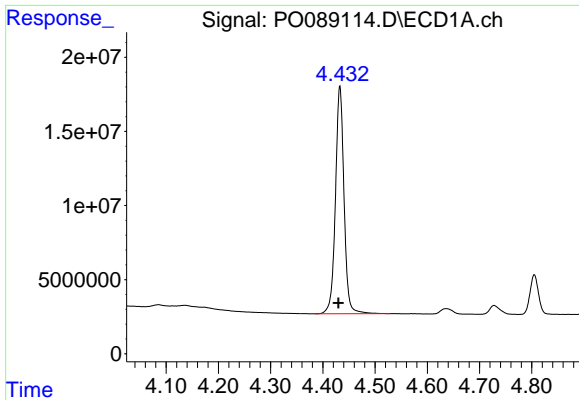
Data Path : Z:\pestpcbsrv\HPCHEM1\ECD_O\Data\P0082922\
 Data File : P0089114.D
 Signal(s) : Signal #1: ECD1A.ch Signal #2: ECD2B.ch
 Acq On : 29 Aug 2022 17:37
 Operator : YP/AJ
 Sample : P0082922ICV500
 Misc :
 ALS Vial : 31 Sample Multiplier: 1

Instrument :
 ECD_O
 ClientSampleId :
 ICVPO082922

Integration File signal 1: autoint1.e
 Integration File signal 2: autoint2.e
 Quant Time: Aug 29 17:52:13 2022
 Quant Method : Z:\pestpcbsrv\HPCHEM1\ECD_O\methods\P0082922.M
 Quant Title : GC EXTRACTABLES
 QLast Update : Mon Aug 29 17:48:02 2022
 Response via : Initial Calibration
 Integrator: ChemStation

Volume Inj. : 2 µl
 Signal #1 Phase : ZB-MR1 Signal #2 Phase: ZB-MR2
 Signal #1 Info : 30Mx0.32mmx 0.50µ Signal #2 Info : 30M x 0.32mm x 0.25µm

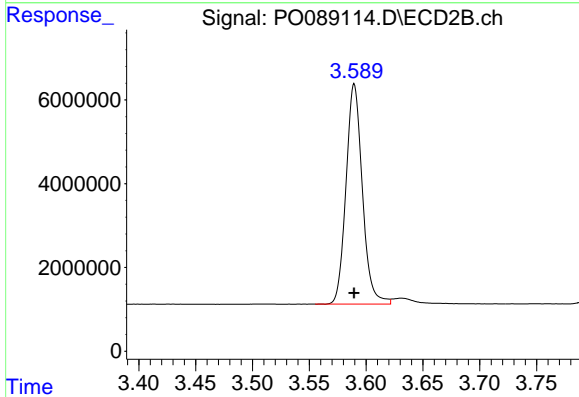




#1 Tetrachloro-m-xylene

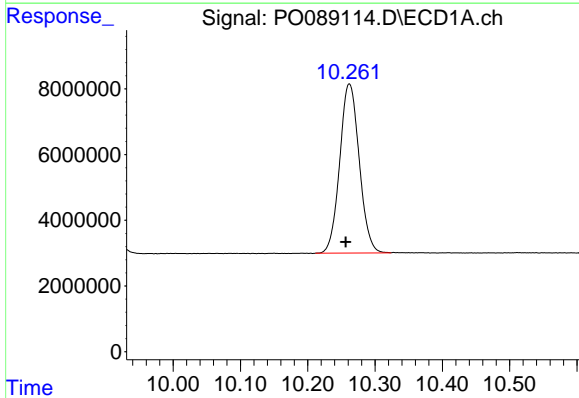
R.T.: 4.433 min
 Delta R.T.: 0.003 min
 Response: 175368204
 Conc: 46.77 ng/ml

Instrument :
 ECD_O
 ClientSampleId :
 ICVPO082922



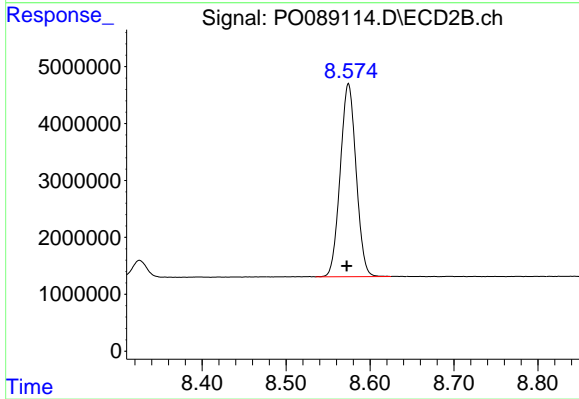
#1 Tetrachloro-m-xylene

R.T.: 3.590 min
 Delta R.T.: 0.000 min
 Response: 52684557
 Conc: 54.58 ng/ml



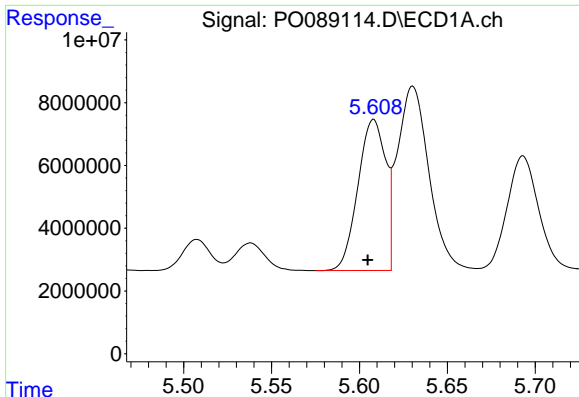
#2 Decachlorobiphenyl

R.T.: 10.262 min
 Delta R.T.: 0.005 min
 Response: 103799287
 Conc: 45.08 ng/ml



#2 Decachlorobiphenyl

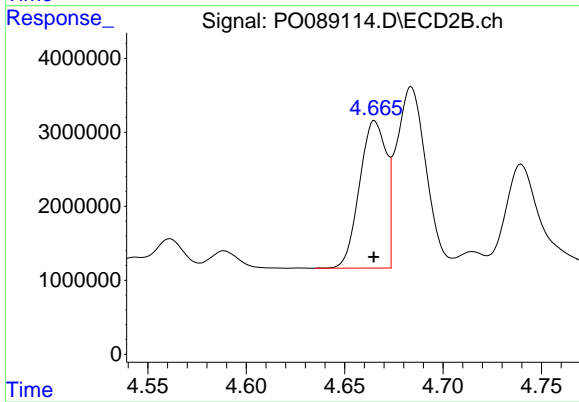
R.T.: 8.574 min
 Delta R.T.: 0.002 min
 Response: 44553296
 Conc: 50.38 ng/ml



#3 AR-1016-1

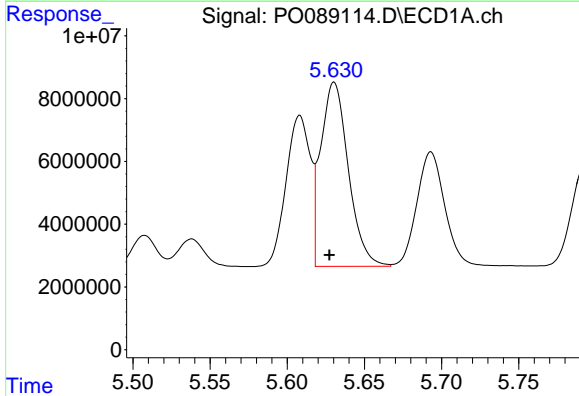
R.T.: 5.608 min
 Delta R.T.: 0.003 min
 Response: 52725597
 Conc: 468.94 ng/ml

Instrument :
 ECD_O
 ClientSampleId :
 ICVPO082922



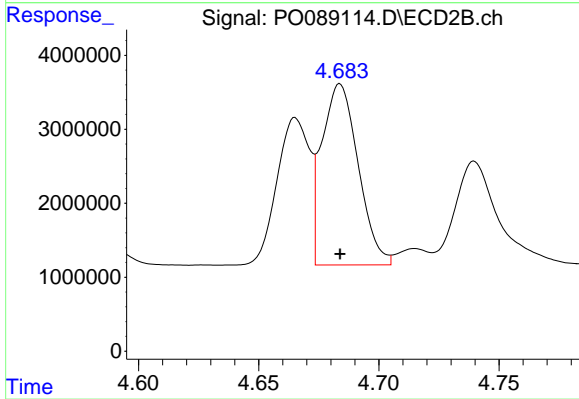
#3 AR-1016-1

R.T.: 4.665 min
 Delta R.T.: 0.000 min
 Response: 18796017
 Conc: 520.48 ng/ml



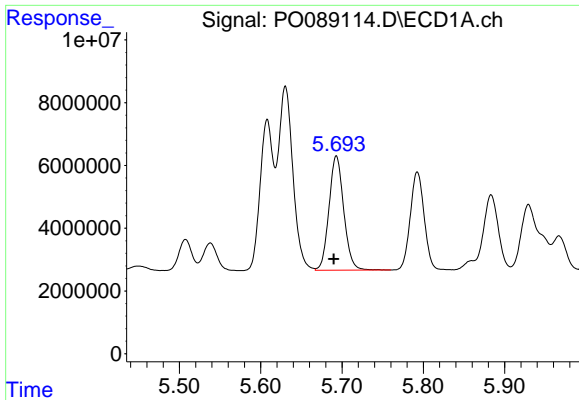
#4 AR-1016-2

R.T.: 5.630 min
 Delta R.T.: 0.003 min
 Response: 73294112
 Conc: 465.07 ng/ml



#4 AR-1016-2

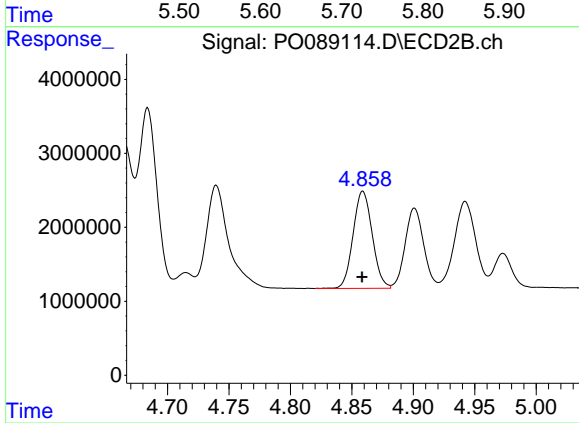
R.T.: 4.684 min
 Delta R.T.: 0.000 min
 Response: 25771524
 Conc: 522.01 ng/ml



#5 AR-1016-3

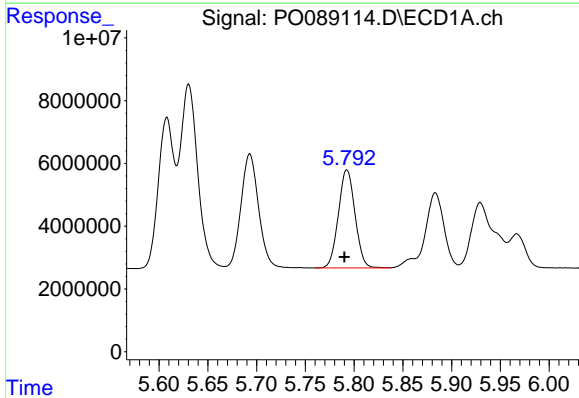
R.T.: 5.693 min
 Delta R.T.: 0.003 min
 Response: 45890459
 Conc: 470.54 ng/ml

Instrument :
 ECD_O
 ClientSampleId :
 ICVPO082922



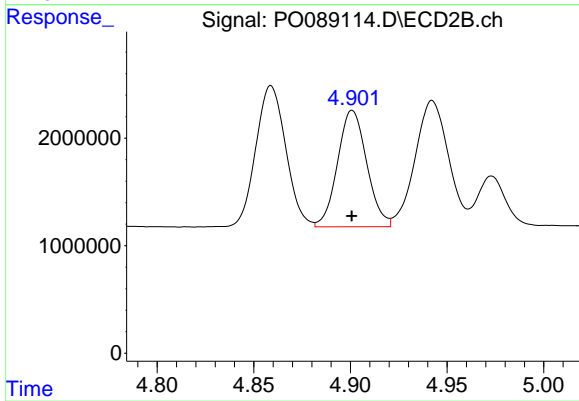
#5 AR-1016-3

R.T.: 4.859 min
 Delta R.T.: 0.000 min
 Response: 14254669
 Conc: 535.95 ng/ml



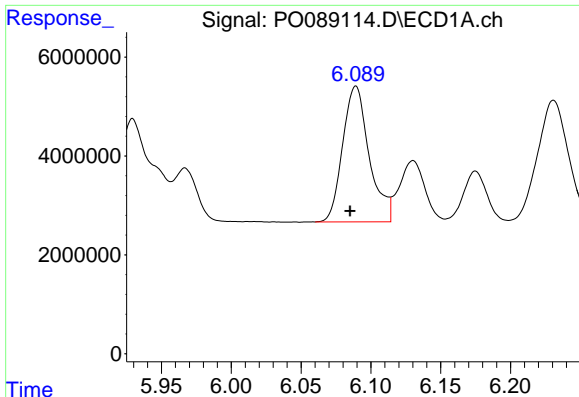
#6 AR-1016-4

R.T.: 5.793 min
 Delta R.T.: 0.003 min
 Response: 37082583
 Conc: 471.27 ng/ml



#6 AR-1016-4

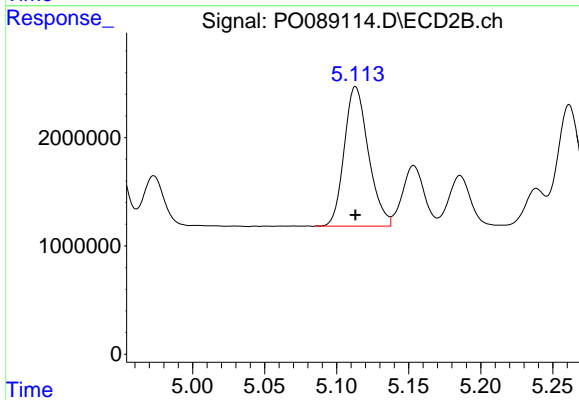
R.T.: 4.901 min
 Delta R.T.: 0.000 min
 Response: 11392431
 Conc: 529.31 ng/ml



#7 AR-1016-5

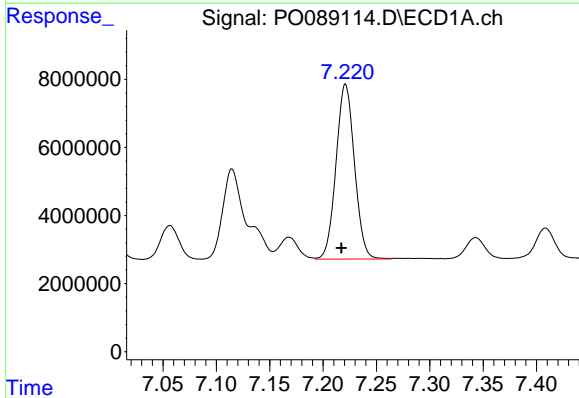
R.T.: 6.089 min
Delta R.T.: 0.004 min
Response: 36382759
Conc: 474.08 ng/ml

Instrument :
ECD_O
ClientSampleId :
ICVPO082922



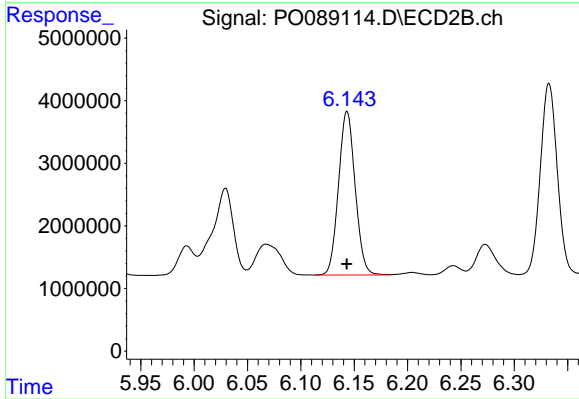
#7 AR-1016-5

R.T.: 5.113 min
Delta R.T.: 0.000 min
Response: 15043892
Conc: 515.59 ng/ml



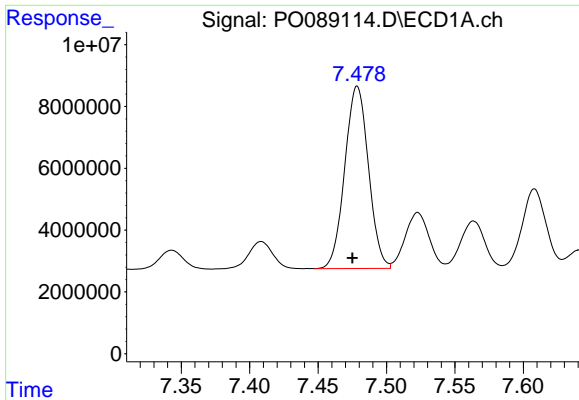
#31 AR-1260-1

R.T.: 7.221 min
Delta R.T.: 0.004 min
Response: 61783947
Conc: 458.83 ng/ml



#31 AR-1260-1

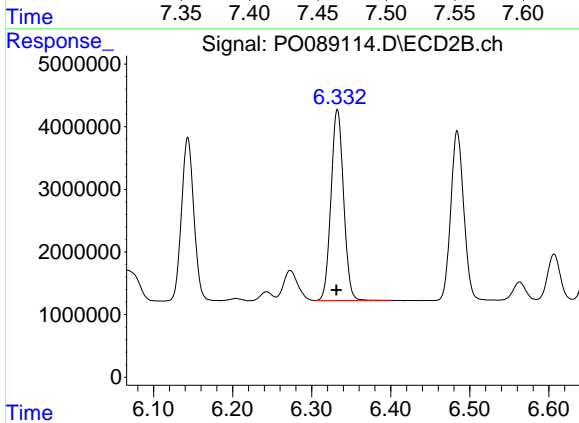
R.T.: 6.143 min
Delta R.T.: 0.000 min
Response: 28392014
Conc: 506.07 ng/ml



#32 AR-1260-2

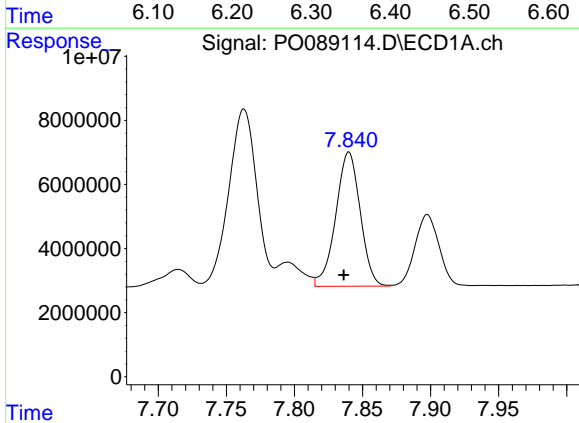
R.T.: 7.479 min
 Delta R.T.: 0.004 min
 Response: 71161051
 Conc: 466.28 ng/ml

Instrument :
 ECD_O
 ClientSampleId :
 ICVPO082922



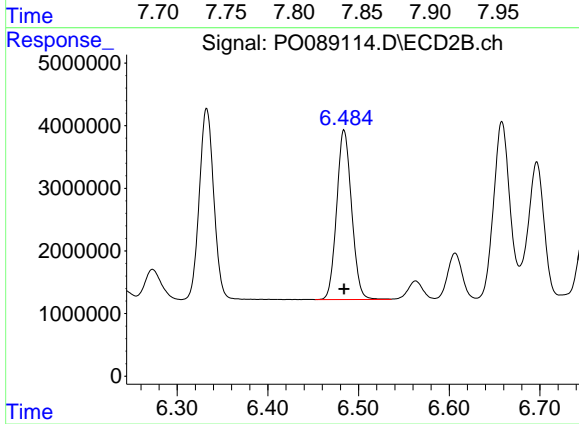
#32 AR-1260-2

R.T.: 6.333 min
 Delta R.T.: 0.001 min
 Response: 33734295
 Conc: 496.44 ng/ml



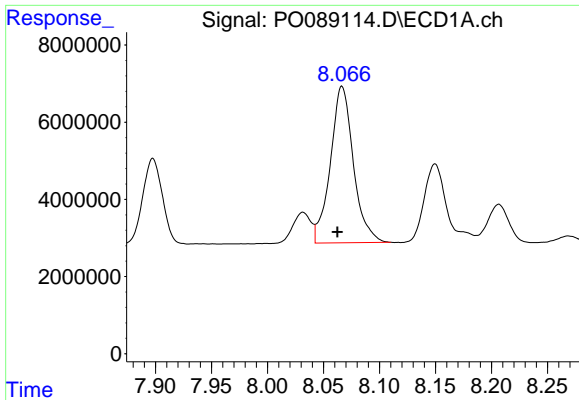
#33 AR-1260-3

R.T.: 7.840 min
 Delta R.T.: 0.004 min
 Response: 52435786
 Conc: 469.26 ng/ml



#33 AR-1260-3

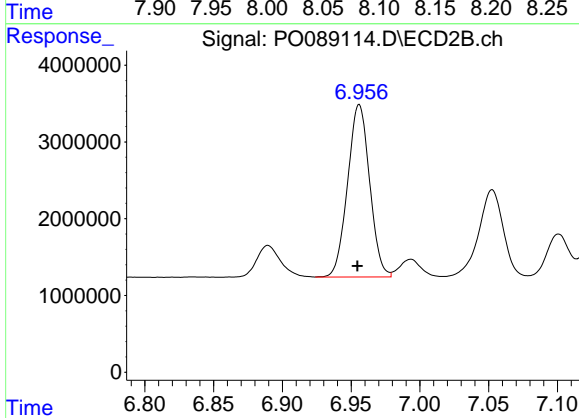
R.T.: 6.484 min
 Delta R.T.: 0.000 min
 Response: 30944726
 Conc: 504.36 ng/ml



#34 AR-1260-4

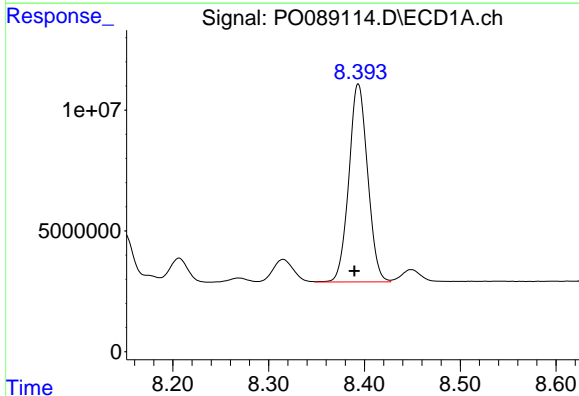
R.T.: 8.067 min
Delta R.T.: 0.004 min
Response: 58009936
Conc: 469.91 ng/ml

Instrument :
ECD_O
ClientSampleId :
ICVPO082922



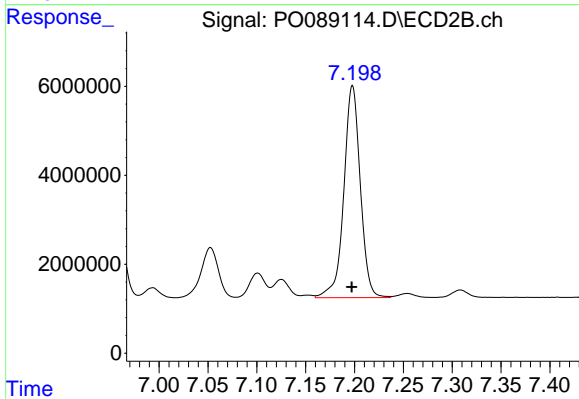
#34 AR-1260-4

R.T.: 6.956 min
Delta R.T.: 0.001 min
Response: 25035305
Conc: 496.81 ng/ml



#35 AR-1260-5

R.T.: 8.394 min
Delta R.T.: 0.004 min
Response: 111121178
Conc: 465.80 ng/ml



#35 AR-1260-5

R.T.: 7.198 min
Delta R.T.: 0.000 min
Response: 55941866
Conc: 488.93 ng/ml