

Data Path : Z:\pestpcbsrv\HPCHEM1\ECD_0\Data\P0082922\
 Data File : P0089133.D
 Signal(s) : Signal #1: ECD1A.ch Signal #2: ECD2B.ch
 Acq On : 29 Aug 2022 23:08
 Operator : YP/AJ
 Sample : N4401-08 10X
 Misc :
 ALS Vial : 45 Sample Multiplier: 1

Instrument :
 ECD_0
ClientSampleId :
 63A

Manual Integrations
APPROVED

Reviewed By :Yogesh Patel 08/30/2022
 Supervised By :Ankita Jodhani 08/30/2022

Integration File signal 1: autoint1.e
 Integration File signal 2: autoint2.e
 Quant Time: Aug 30 03:10:28 2022
 Quant Method : Z:\pestpcbsrv\HPCHEM1\ECD_0\methods\P0082922.M
 Quant Title : GC EXTRACTABLES
 QLast Update : Mon Aug 29 17:48:02 2022
 Response via : Initial Calibration
 Integrator: ChemStation

Volume Inj. : 2 µl
 Signal #1 Phase : ZB-MR1 Signal #2 Phase: ZB-MR2
 Signal #1 Info : 30Mx0.32mmx 0.50µ Signal #2 Info : 30M x 0.32mm x 0.25µm

Compound	RT#1	RT#2	Resp#1	Resp#2	ng/ml	ng/ml

System Monitoring Compounds						
1) SA Tetrachlo...	4.431	3.588	5204408	1725928	1.388	1.788 #
2) SA Decachlor...	10.260	8.572	4067600	1661674	1.767	1.879m

Target Compounds

(f)=RT Delta > 1/2 Window (#)=Amounts differ by > 25% (m)=manual int.

Data Path : Z:\pestpcbsrv\HPCHEM1\ECD_0\Data\PO082922\
 Data File : PO089133.D
 Signal(s) : Signal #1: ECD1A.ch Signal #2: ECD2B.ch
 Acq On : 29 Aug 2022 23:08
 Operator : YP/AJ
 Sample : N4401-08 10X
 Misc :
 ALS Vial : 45 Sample Multiplier: 1

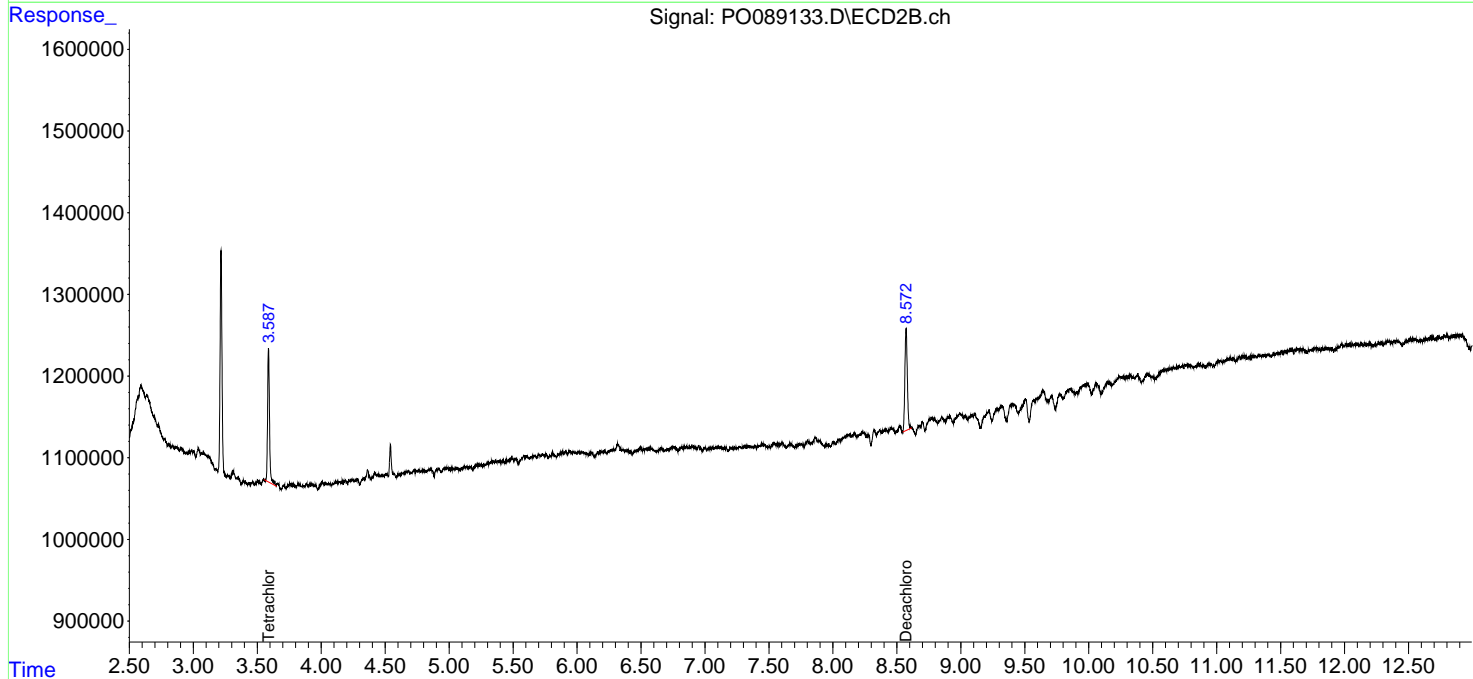
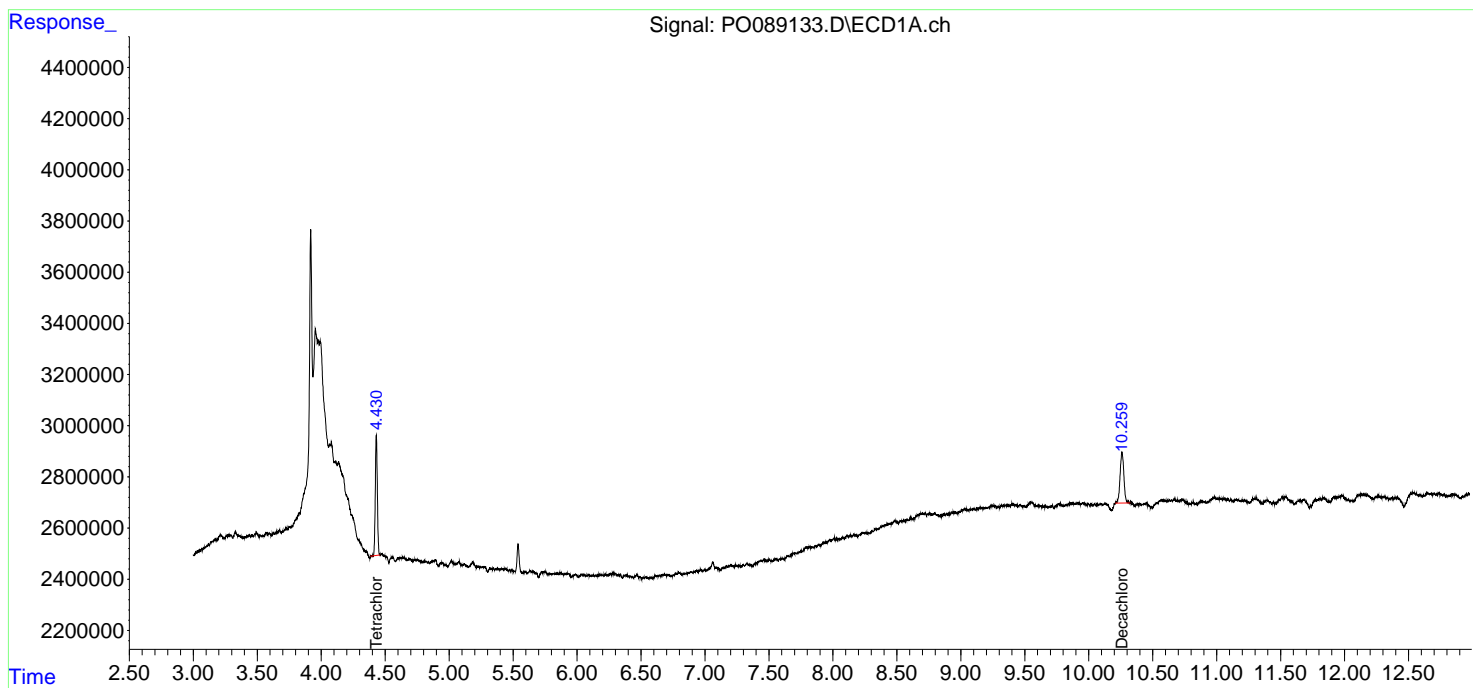
Instrument :
 ECD_0
 ClientSampleId :
 63A

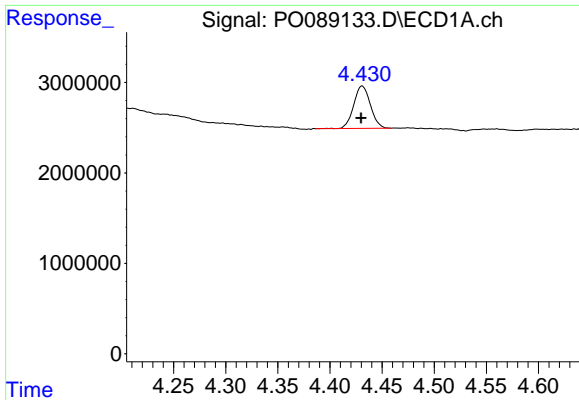
Manual Integrations
 APPROVED

Reviewed By :Yogesh Patel 08/30/2022
 Supervised By :Ankita Jodhani 08/30/2022

Integration File signal 1: autoint1.e
 Integration File signal 2: autoint2.e
 Quant Time: Aug 30 03:10:28 2022
 Quant Method : Z:\pestpcbsrv\HPCHEM1\ECD_0\methods\PO082922.M
 Quant Title : GC EXTRACTABLES
 QLast Update : Mon Aug 29 17:48:02 2022
 Response via : Initial Calibration
 Integrator: ChemStation

Volume Inj. : 2 µl
 Signal #1 Phase : ZB-MR1 Signal #2 Phase: ZB-MR2
 Signal #1 Info : 30Mx0.32mmx 0.50µ Signal #2 Info : 30M x 0.32mm x 0.25µm



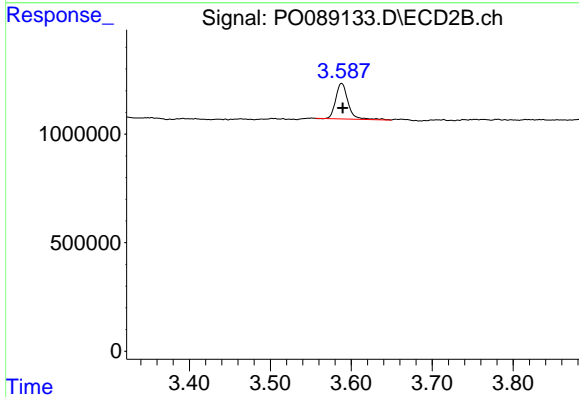


#1 Tetrachloro-m-xylene
 R.T.: 4.431 min
 Delta R.T.: 0.000 min
 Response: 5204408
 Conc: 1.39 ng/ml

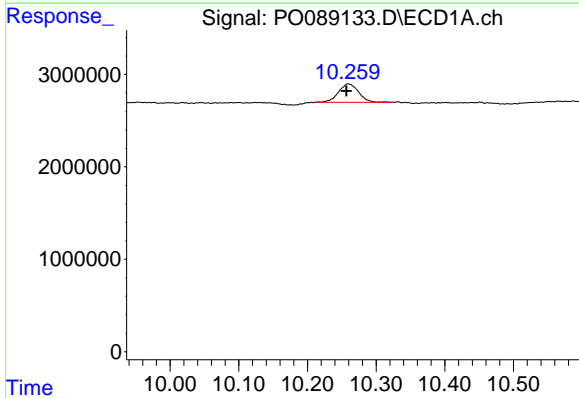
Instrument :
 ECD_O
 ClientSampleId :
 63A

Manual Integrations
 APPROVED

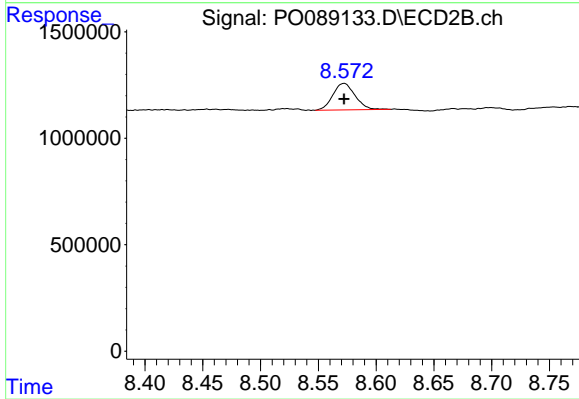
Reviewed By :Yogesh Patel 08/30/2022
 Supervised By :Ankita Jodhani 08/30/2022



#1 Tetrachloro-m-xylene
 R.T.: 3.588 min
 Delta R.T.: -0.001 min
 Response: 1725928
 Conc: 1.79 ng/ml



#2 Decachlorobiphenyl
 R.T.: 10.260 min
 Delta R.T.: 0.003 min
 Response: 4067600
 Conc: 1.77 ng/ml



#2 Decachlorobiphenyl
 R.T.: 8.572 min
 Delta R.T.: 0.000 min
 Response: 1661674
 Conc: 1.88 ng/ml m