

Data Path : Z:\pestpcbsrv\HPCHEM1\ECD_0\Data\P0082922\
 Data File : P0089134.D
 Signal(s) : Signal #1: ECD1A.ch Signal #2: ECD2B.ch
 Acq On : 30 Aug 2022 00:10
 Operator : YP/AJ
 Sample : AR1660CCC500
 Misc :
 ALS Vial : 5 Sample Multiplier: 1

Instrument :
 ECD_0
 ClientSampleId :
 AR1660CCC500

Integration File signal 1: autoint1.e
 Integration File signal 2: autoint2.e
 Quant Time: Aug 30 03:11:12 2022
 Quant Method : Z:\pestpcbsrv\HPCHEM1\ECD_0\methods\P0082922.M
 Quant Title : GC EXTRACTABLES
 QLast Update : Mon Aug 29 17:48:02 2022
 Response via : Initial Calibration
 Integrator: ChemStation

Volume Inj. : 2 µl
 Signal #1 Phase : ZB-MR1 Signal #2 Phase: ZB-MR2
 Signal #1 Info : 30Mx0.32mmx 0.50µ Signal #2 Info : 30M x 0.32mm x 0.25µm

Compound	RT#1	RT#2	Resp#1	Resp#2	ng/ml	ng/ml

System Monitoring Compounds						
1) SA Tetrachlo...	4.430	3.587	189.8E6	56224973	50.622	58.248
2) SA Decachlor...	10.257	8.570	114.4E6	52561397	49.693	59.439
Target Compounds						
3) L1 AR-1016-1	5.605	4.663	55652088	19138855	494.967	529.968
4) L1 AR-1016-2	5.628	4.681	77015098	26187547	488.679	530.441
5) L1 AR-1016-3	5.690	4.856	48128076	14433935	493.480	542.687
6) L1 AR-1016-4	5.790	4.898	39154459	11639272	497.600	540.776
7) L1 AR-1016-5	6.086	5.110	38736630	15604514	504.754	534.808
31) L7 AR-1260-1	7.218	6.141	65527261	28810221	486.630	513.521
32) L7 AR-1260-2	7.474	6.329	73207521	34201760	479.692	503.322
33) L7 AR-1260-3	7.836	6.482	54223164	31588859	485.257	514.863
34) L7 AR-1260-4	8.063	6.952	60077236	26068671	486.656	517.314
35) L7 AR-1260-5	8.390	7.195	114.9E6	58274119	481.454	509.319

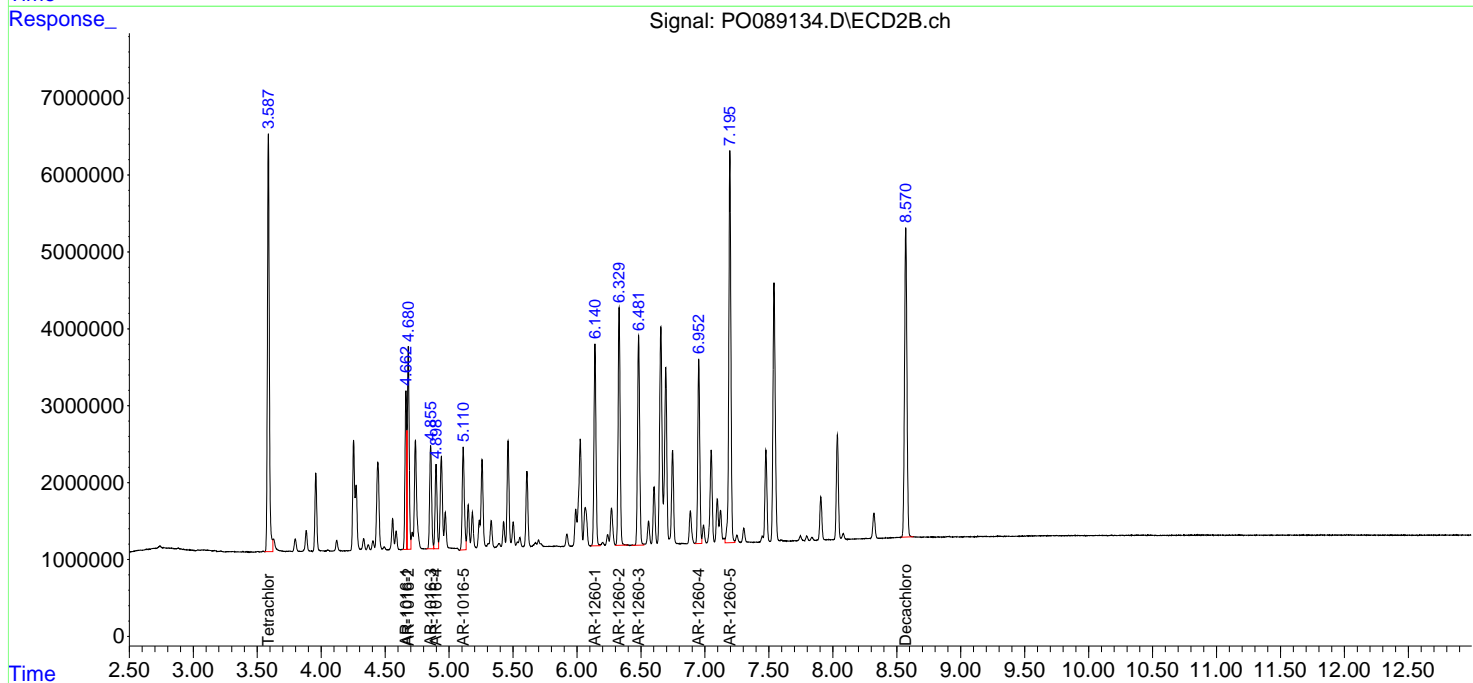
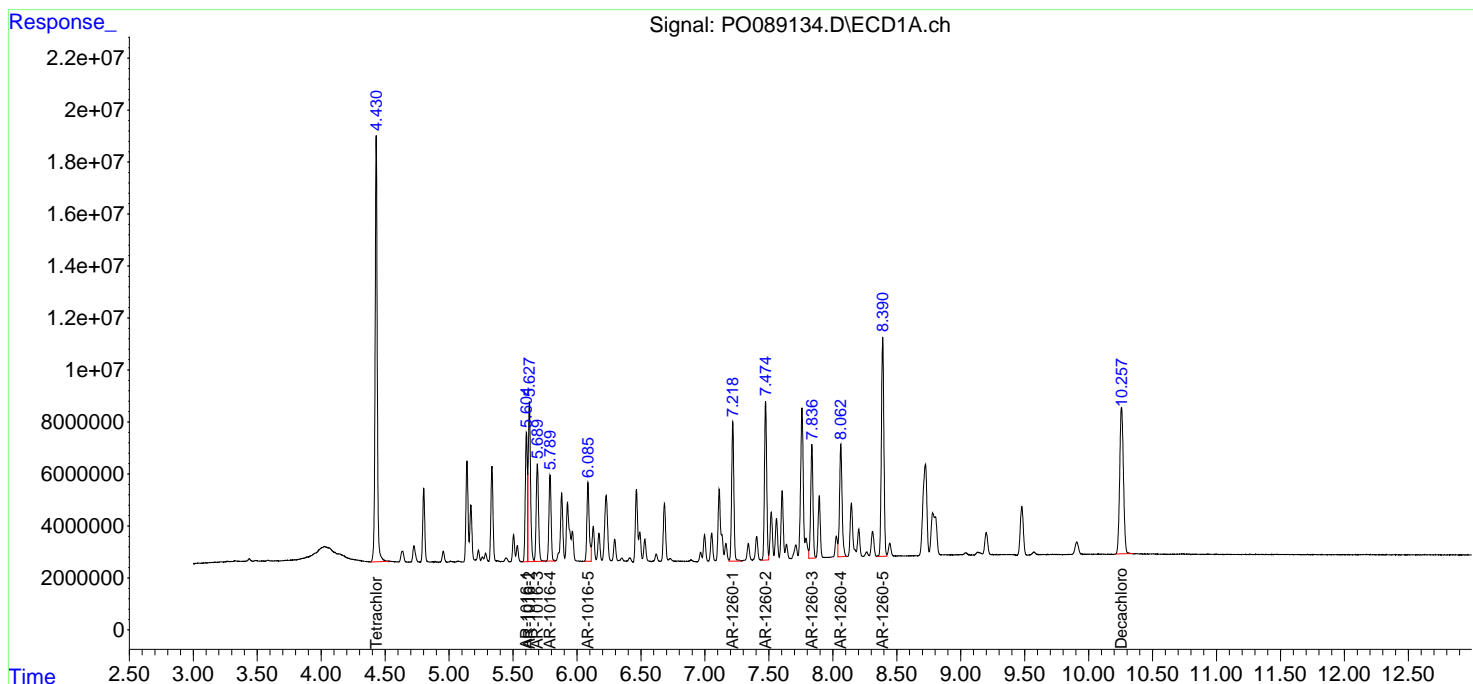
(f)=RT Delta > 1/2 Window (#)=Amounts differ by > 25% (m)=manual int.

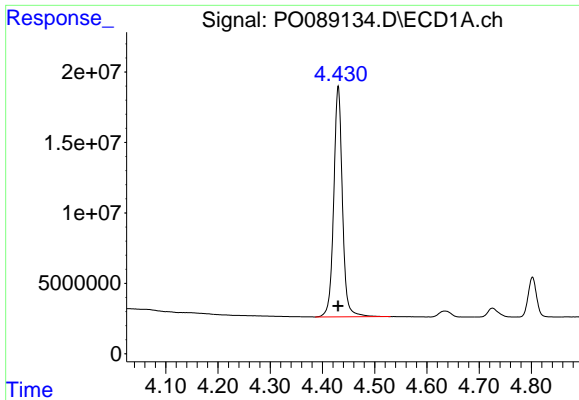
Data Path : Z:\pestpcbsrv\HPCHEM1\ECD_O\Data\PO082922\
 Data File : PO089134.D
 Signal(s) : Signal #1: ECD1A.ch Signal #2: ECD2B.ch
 Acq On : 30 Aug 2022 00:10
 Operator : YP/AJ
 Sample : AR1660CCC500
 Misc :
 ALS Vial : 5 Sample Multiplier: 1

Instrument :
 ECD_O
 ClientSampleId :
 AR1660CCC500

Integration File signal 1: autoint1.e
 Integration File signal 2: autoint2.e
 Quant Time: Aug 30 03:11:12 2022
 Quant Method : Z:\pestpcbsrv\HPCHEM1\ECD_O\methods\PO082922.M
 Quant Title : GC EXTRACTABLES
 QLast Update : Mon Aug 29 17:48:02 2022
 Response via : Initial Calibration
 Integrator: ChemStation

Volume Inj. : 2 µl
 Signal #1 Phase : ZB-MR1 Signal #2 Phase: ZB-MR2
 Signal #1 Info : 30Mx0.32mmx 0.50µ Signal #2 Info : 30M x 0.32mm x 0.25µm

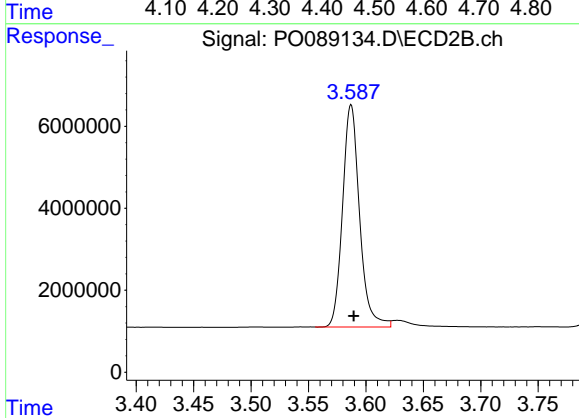




#1 Tetrachloro-m-xylene

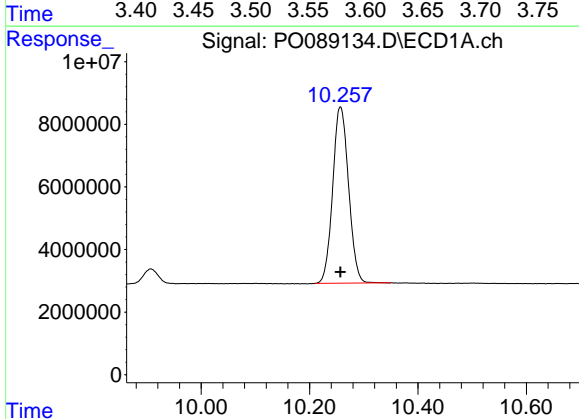
R.T.: 4.430 min
 Delta R.T.: 0.000 min
 Response: 189813107
 Conc: 50.62 ng/ml

Instrument :
 ECD_O
 ClientSampleId :
 AR1660CCC500



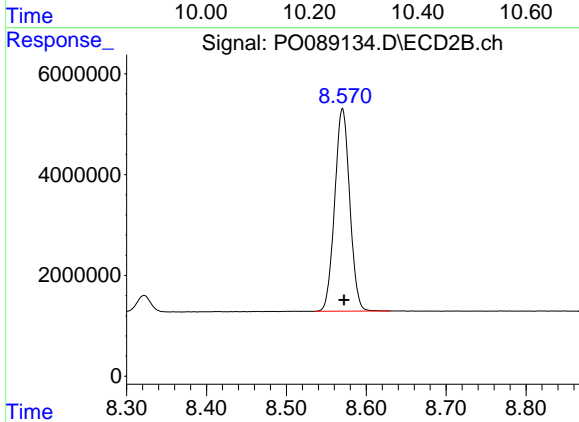
#1 Tetrachloro-m-xylene

R.T.: 3.587 min
 Delta R.T.: -0.002 min
 Response: 56224973
 Conc: 58.25 ng/ml



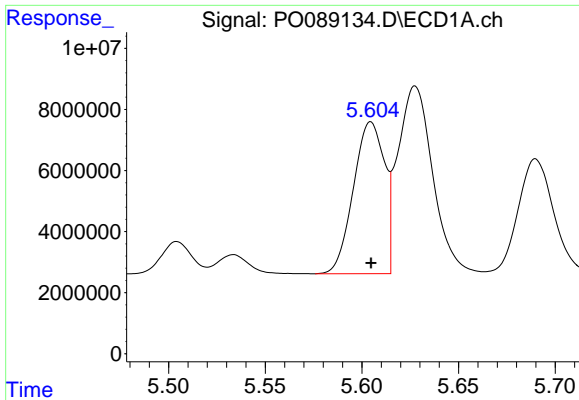
#2 Decachlorobiphenyl

R.T.: 10.257 min
 Delta R.T.: 0.000 min
 Response: 114409274
 Conc: 49.69 ng/ml



#2 Decachlorobiphenyl

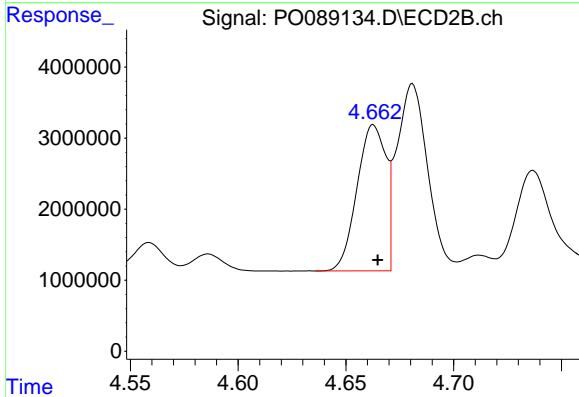
R.T.: 8.570 min
 Delta R.T.: -0.002 min
 Response: 52561397
 Conc: 59.44 ng/ml



#3 AR-1016-1

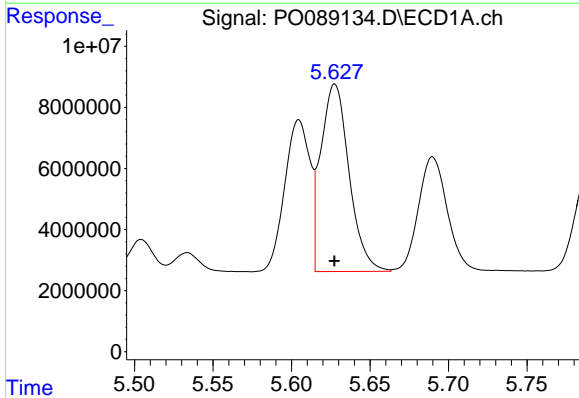
R.T.: 5.605 min
 Delta R.T.: 0.000 min
 Response: 55652088
 Conc: 494.97 ng/ml

Instrument :
 ECD_O
 ClientSampleId :
 AR1660CCC500



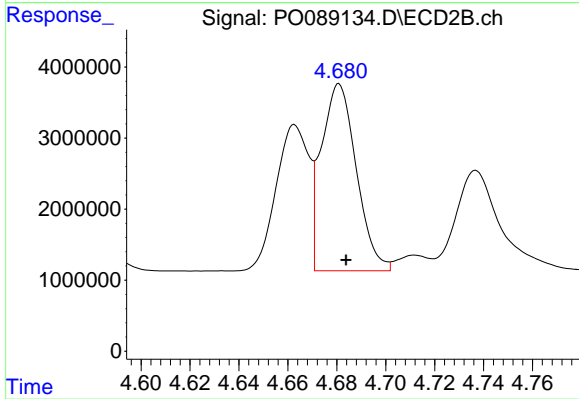
#3 AR-1016-1

R.T.: 4.663 min
 Delta R.T.: -0.002 min
 Response: 19138855
 Conc: 529.97 ng/ml



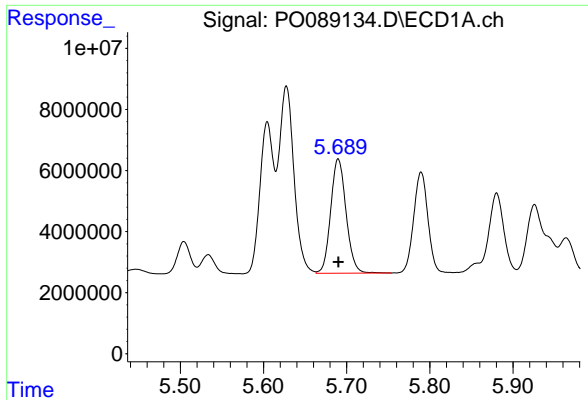
#4 AR-1016-2

R.T.: 5.628 min
 Delta R.T.: 0.000 min
 Response: 77015098
 Conc: 488.68 ng/ml



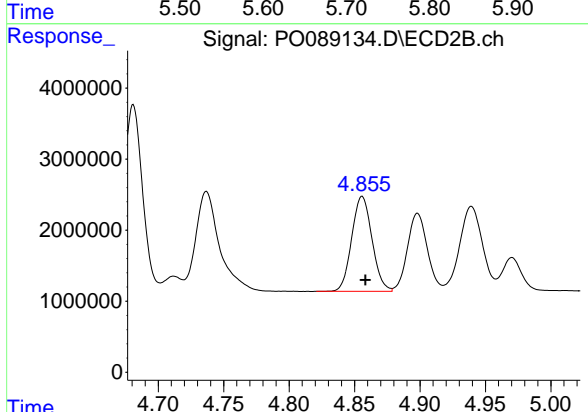
#4 AR-1016-2

R.T.: 4.681 min
 Delta R.T.: -0.003 min
 Response: 26187547
 Conc: 530.44 ng/ml

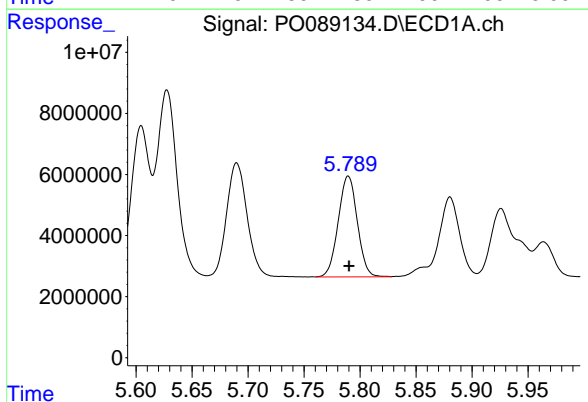


#5 AR-1016-3
 R.T.: 5.690 min
 Delta R.T.: 0.000 min
 Response: 48128076
 Conc: 493.48 ng/ml

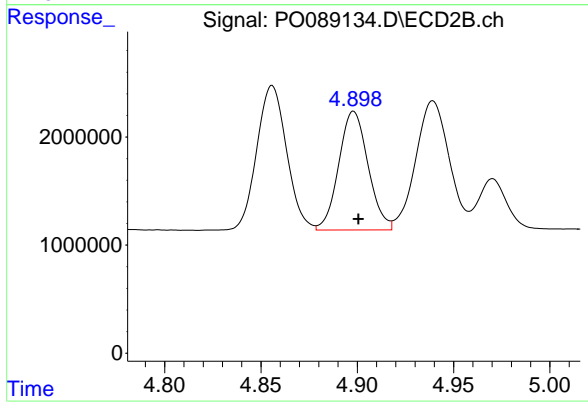
Instrument :
 ECD_O
 ClientSampleId :
 AR1660CCC500



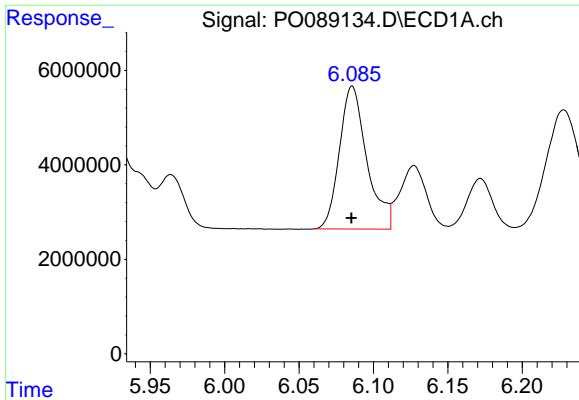
#5 AR-1016-3
 R.T.: 4.856 min
 Delta R.T.: -0.002 min
 Response: 14433935
 Conc: 542.69 ng/ml



#6 AR-1016-4
 R.T.: 5.790 min
 Delta R.T.: 0.000 min
 Response: 39154459
 Conc: 497.60 ng/ml



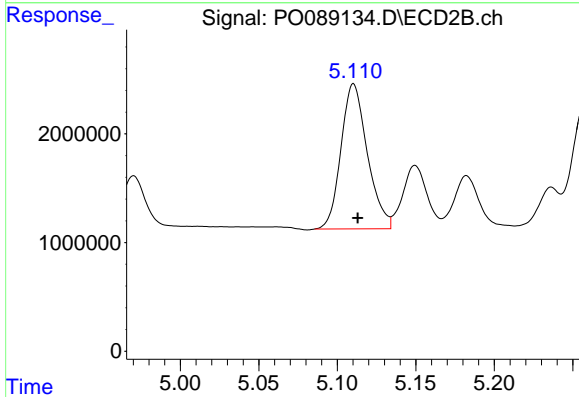
#6 AR-1016-4
 R.T.: 4.898 min
 Delta R.T.: -0.002 min
 Response: 11639272
 Conc: 540.78 ng/ml



#7 AR-1016-5

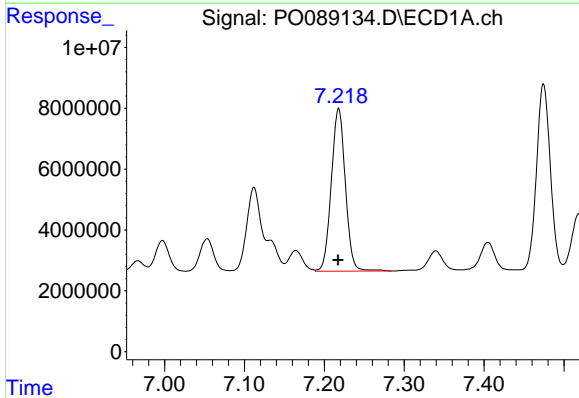
R.T.: 6.086 min
 Delta R.T.: 0.000 min
 Response: 38736630
 Conc: 504.75 ng/ml

Instrument :
 ECD_O
 ClientSampleId :
 AR1660CCC500



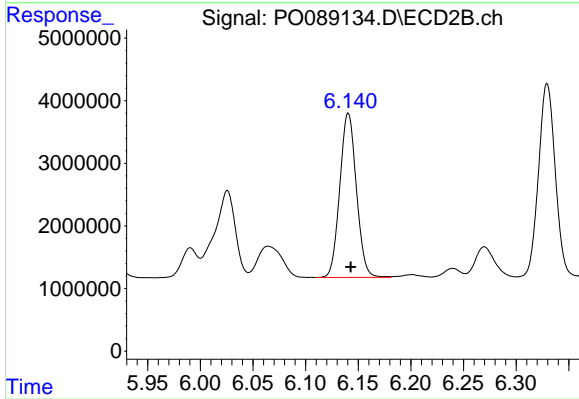
#7 AR-1016-5

R.T.: 5.110 min
 Delta R.T.: -0.003 min
 Response: 15604514
 Conc: 534.81 ng/ml



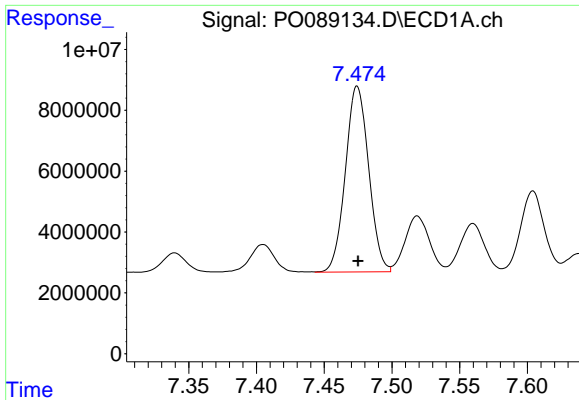
#31 AR-1260-1

R.T.: 7.218 min
 Delta R.T.: 0.000 min
 Response: 65527261
 Conc: 486.63 ng/ml



#31 AR-1260-1

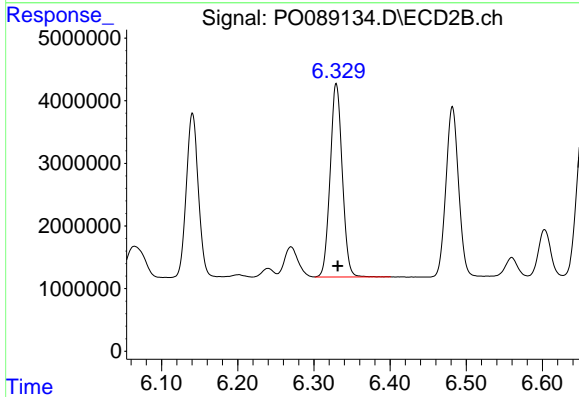
R.T.: 6.141 min
 Delta R.T.: -0.002 min
 Response: 28810221
 Conc: 513.52 ng/ml



#32 AR-1260-2

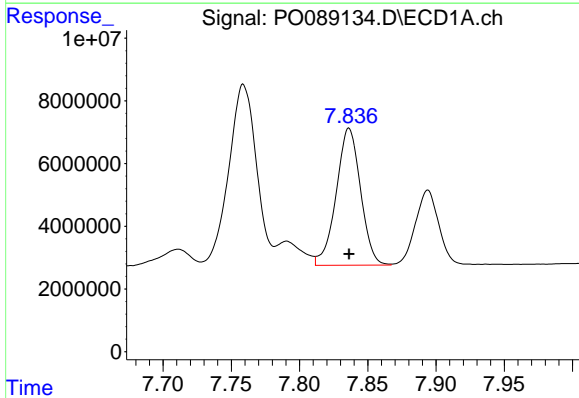
R.T.: 7.474 min
 Delta R.T.: 0.000 min
 Response: 73207521
 Conc: 479.69 ng/ml

Instrument :
 ECD_O
 ClientSampleId :
 AR1660CCC500



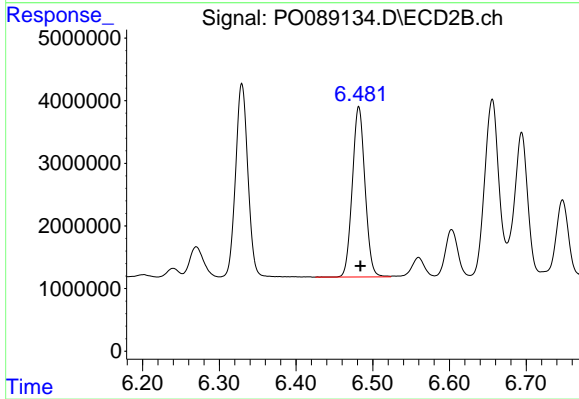
#32 AR-1260-2

R.T.: 6.329 min
 Delta R.T.: -0.002 min
 Response: 34201760
 Conc: 503.32 ng/ml



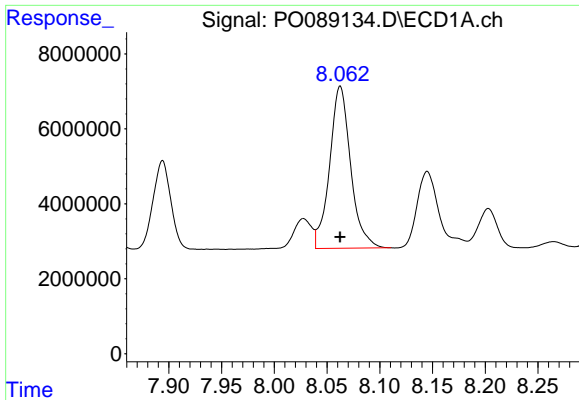
#33 AR-1260-3

R.T.: 7.836 min
 Delta R.T.: 0.000 min
 Response: 54223164
 Conc: 485.26 ng/ml



#33 AR-1260-3

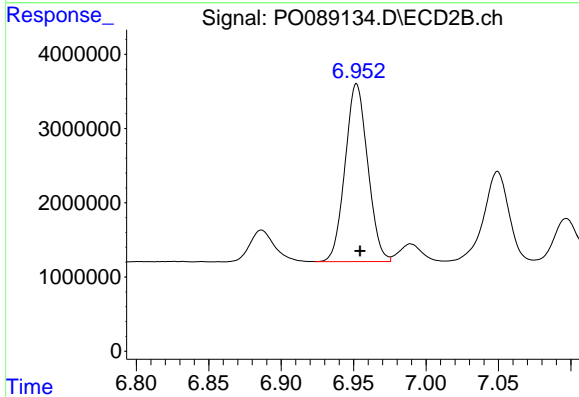
R.T.: 6.482 min
 Delta R.T.: -0.002 min
 Response: 31588859
 Conc: 514.86 ng/ml



#34 AR-1260-4

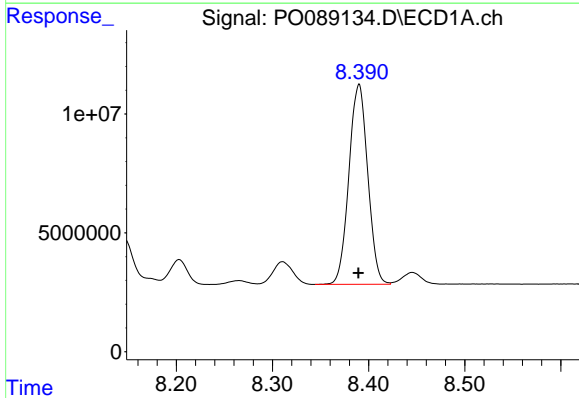
R.T.: 8.063 min
 Delta R.T.: 0.000 min
 Response: 60077236
 Conc: 486.66 ng/ml

Instrument :
 ECD_O
 ClientSampleId :
 AR1660CCC500



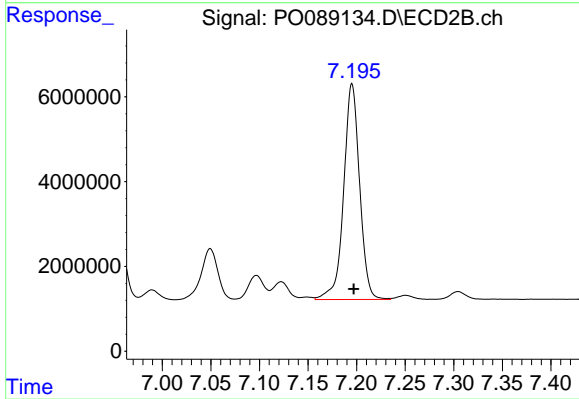
#34 AR-1260-4

R.T.: 6.952 min
 Delta R.T.: -0.002 min
 Response: 26068671
 Conc: 517.31 ng/ml



#35 AR-1260-5

R.T.: 8.390 min
 Delta R.T.: 0.000 min
 Response: 114854879
 Conc: 481.45 ng/ml



#35 AR-1260-5

R.T.: 7.195 min
 Delta R.T.: -0.002 min
 Response: 58274119
 Conc: 509.32 ng/ml