

Data Path : Z:\pestpcbsrv\HPCHEM1\ECD\_0\Data\P0082924\  
 Data File : PO106003.D  
 Signal(s) : Signal #1: ECD1A.ch Signal #2: ECD2B.ch  
 Acq On : 29 Aug 2024 10:09  
 Operator : YP/AJ  
 Sample : AR1248CCC500  
 Misc :  
 ALS Vial : 5 Sample Multiplier: 1

Instrument :  
 ECD\_0  
 ClientSampleId :  
 AR1248CCC500

Integration File signal 1: autoint1.e  
 Integration File signal 2: autoint2.e  
 Quant Time: Aug 29 11:46:05 2024  
 Quant Method : Z:\pestpcbsrv\HPCHEM1\ECD\_0\methods\P0082624.M  
 Quant Title : GC EXTRACTABLES  
 QLast Update : Tue Aug 27 06:50:58 2024  
 Response via : Initial Calibration  
 Integrator: ChemStation

Volume Inj. : 2 µl  
 Signal #1 Phase : ZB-MR1 Signal #2 Phase: ZB-MR2  
 Signal #1 Info : 30Mx0.32mmx 0.50µ Signal #2 Info : 30M x 0.32mm x 0.25µm

Compound	RT#1	RT#2	Resp#1	Resp#2	ng/ml	ng/ml
System Monitoring Compounds						
1) SA Tetrachlo...	4.453	3.719	452.6E6	146.0E6	49.606	54.045
2) SA Decachlor...	10.191	8.750	262.6E6	110.4E6	48.386	50.556
Target Compounds						
3) L1 AR-1016-1	5.616	4.808	92191974	28845150	291.698	301.724
4) L1 AR-1016-2	5.639	4.828	106.6E6	28141079	242.538	221.750
5) L1 AR-1016-3	5.701	5.007	52391626	18791776	194.873	268.627 #
6) L1 AR-1016-4	5.798	5.045	58584565	38197113	266.130	710.309 #
7) L1 AR-1016-5	6.093	5.260	139.4E6	46891721	655.209	681.456
8) L2 AR-1221-1	4.651	3.934	1149321	452921	10.441	14.843 #
9) L2 AR-1221-2	4.757	4.021	8819222	2219708	104.917	97.121
10) L2 AR-1221-3	4.821	4.096	8321693	2324055	34.380	32.563
11) L3 AR-1232-1	4.821	4.096	8321693	2324055	41.046	39.562
12) L3 AR-1232-2	5.350	4.828	41367404	28141079	380.758	498.315 #
13) L3 AR-1232-3	5.639	5.007	106.6E6	18791776	540.512	608.188
14) L3 AR-1232-4	5.798	5.088	58584565	40316941	595.028	1492.158 #
15) L3 AR-1232-5	5.889	5.260	127.2E6	46891721	1670.303	1585.950
16) L4 AR-1242-1	5.616	4.828	92191974	28141079	381.076	395.678
17) L4 AR-1242-2	5.639	4.860	106.6E6	5382754	321.015	57.447 #
18) L4 AR-1242-3	5.701	5.045	52391626	38197113	255.042	749.027 #
19) L4 AR-1242-4	5.798	5.120	58584565	13673734	349.201	266.709
20) L4 AR-1242-5	6.534	5.654	142.3E6	47845344	835.207	740.263
21) L5 AR-1248-1	5.616	4.808	92191974	28845150	490.395	515.009
22) L5 AR-1248-2	5.889	5.045	127.2E6	38197113	492.125	513.112
23) L5 AR-1248-3	6.093	5.088	139.4E6	40316941	488.050	513.307
24) L5 AR-1248-4	6.495	5.260	147.6E6	46891721	468.105	503.604
25) L5 AR-1248-5	6.534	5.654	142.3E6	47845344	468.777	522.125
26) L6 AR-1254-1	6.468	5.612	115.8E6	68345977	375.099	506.555 #
27) L6 AR-1254-2	6.690	5.760	138.1E6	19307924	299.703	159.082 #
28) L6 AR-1254-3	7.052	6.165	70249921	30320174	148.704	157.296
29) L6 AR-1254-4	7.337	6.393	56994980	22041072	163.615	181.748
30) L6 AR-1254-5	7.755	6.811	14549705	6900874	39.845	39.030
31) L7 AR-1260-1	7.217	6.312	10432029	10479501	29.070	79.546 #
32) L7 AR-1260-2	7.470	6.482	18712443	3528068	44.546	21.498 #
33) L7 AR-1260-3	7.818	6.637	4059741	7171161	15.179	42.492 #
34) L7 AR-1260-4	8.042	7.108	5858365	433504	18.897	3.912 #
35) L7 AR-1260-5	8.375	7.347	2481921	891770	4.461	3.286 #
36) L8 AR-1262-1	7.755	6.811	14549705	6900874	50.097	71.585 #
37) L8 AR-1262-2	8.375	7.108	2481921	433504	3.452	2.791
38) L8 AR-1262-3	8.699	7.638	1168691	198149	2.425	1.741 #
39) L8 AR-1262-4	8.776	7.694	88741	608065	0.247	2.552 #
40) L8 AR-1262-5	9.431	8.193	419625	476764	1.632	4.349 #
41) L9 AR-1268-1	8.699	7.638	1168691	198149	1.428	0.577 #

Data Path : Z:\pestpcbsrv\HPCHEM1\ECD\_0\Data\P0082924\  
 Data File : P0106003.D  
 Signal(s) : Signal #1: ECD1A.ch Signal #2: ECD2B.ch  
 Acq On : 29 Aug 2024 10:09  
 Operator : YP/AJ  
 Sample : AR1248CCC500  
 Misc :  
 ALS Vial : 5 Sample Multiplier: 1

Instrument :  
 ECD\_0  
 ClientSampleId :  
 AR1248CCC500

Integration File signal 1: autoint1.e  
 Integration File signal 2: autoint2.e  
 Quant Time: Aug 29 11:46:05 2024  
 Quant Method : Z:\pestpcbsrv\HPCHEM1\ECD\_0\methods\P0082624.M  
 Quant Title : GC EXTRACTABLES  
 QLast Update : Tue Aug 27 06:50:58 2024  
 Response via : Initial Calibration  
 Integrator: ChemStation

Volume Inj. : 2 µl  
 Signal #1 Phase : ZB-MR1 Signal #2 Phase: ZB-MR2  
 Signal #1 Info : 30Mx0.32mmx 0.50µ Signal #2 Info : 30M x 0.32mm x 0.25µm

	Compound	RT#1	RT#2	Resp#1	Resp#2	ng/ml	ng/ml
42)	L9 AR-1268-2	8.786	7.694	135723	608065	0.185	1.888 #
43)	L9 AR-1268-3	9.011	7.904	420900	206887	0.684	0.770
44)	L9 AR-1268-4	9.431	8.193	419625	476764	1.551	4.209 #
45)	L9 AR-1268-5	9.853	8.489	2030447	566360	1.006	0.662 #

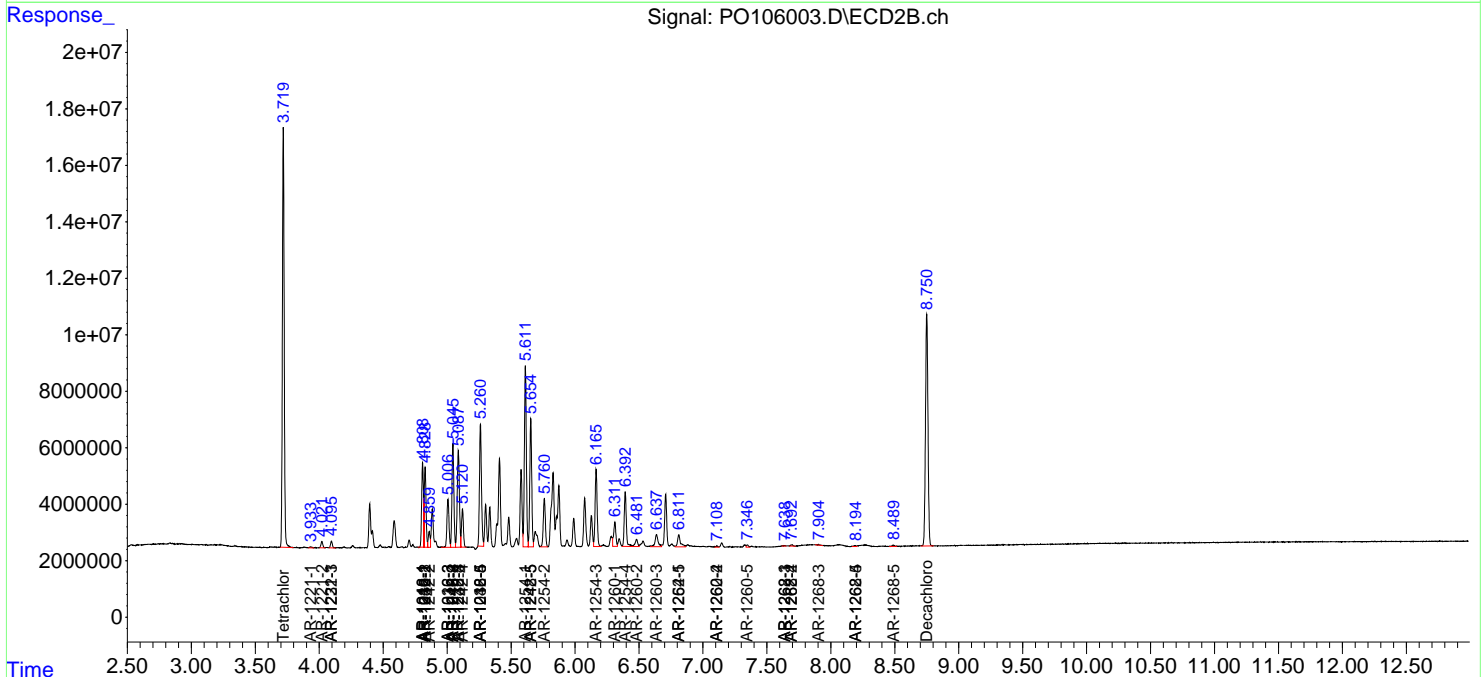
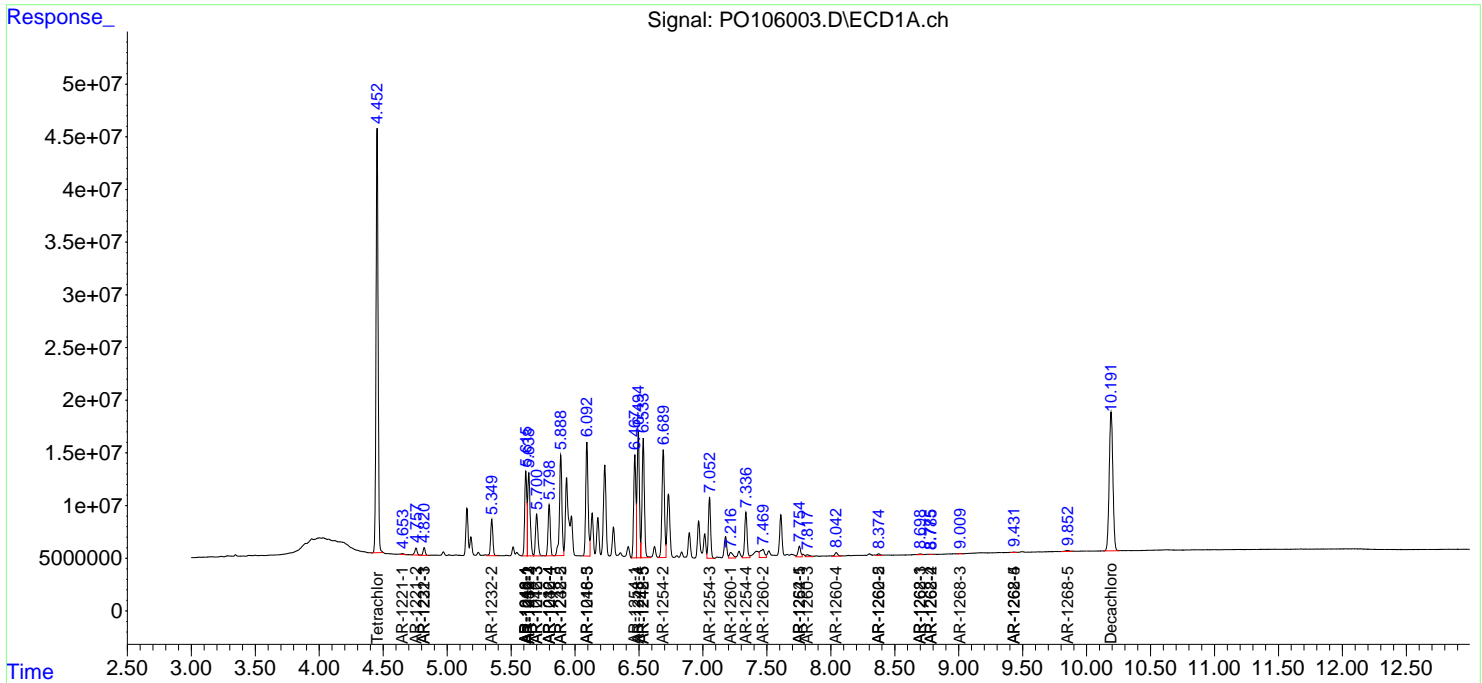
(f)=RT Delta > 1/2 Window (#)=Amounts differ by > 25% (m)=manual int.

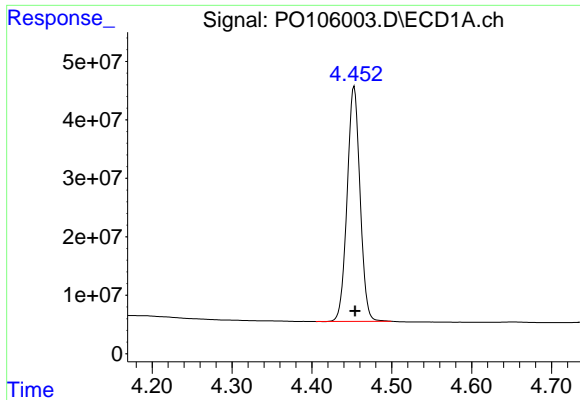
Data Path : Z:\pestpcbsrv\HPCHEM1\ECD\_O\Data\PO082924\  
 Data File : PO106003.D  
 Signal(s) : Signal #1: ECD1A.ch Signal #2: ECD2B.ch  
 Acq On : 29 Aug 2024 10:09  
 Operator : YP/AJ  
 Sample : AR1248CCC500  
 Misc :  
 ALS Vial : 5 Sample Multiplier: 1

Instrument :  
 ECD\_O  
 ClientSampleId :  
 AR1248CCC500

Integration File signal 1: autoint1.e  
 Integration File signal 2: autoint2.e  
 Quant Time: Aug 29 11:46:05 2024  
 Quant Method : Z:\pestpcbsrv\HPCHEM1\ECD\_O\methods\PO082624.M  
 Quant Title : GC EXTRACTABLES  
 QLast Update : Tue Aug 27 06:50:58 2024  
 Response via : Initial Calibration  
 Integrator: ChemStation

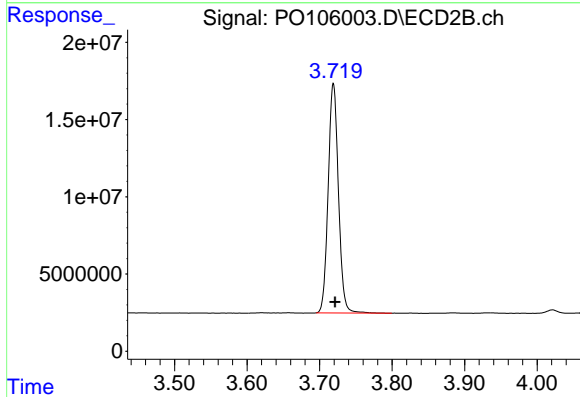
Volume Inj. : 2 µl  
 Signal #1 Phase : ZB-MR1 Signal #2 Phase: ZB-MR2  
 Signal #1 Info : 30Mx0.32mmx 0.50µ Signal #2 Info : 30M x 0.32mm x 0.25µm



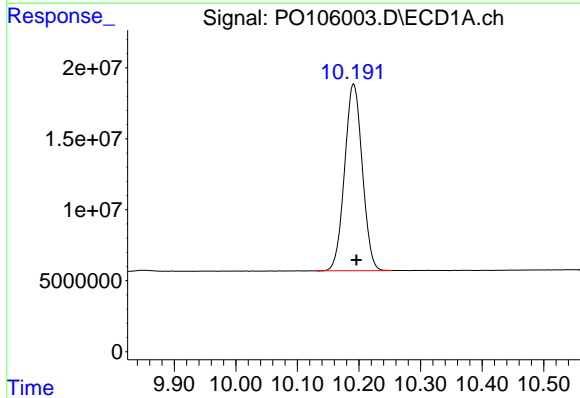


#1 Tetrachloro-m-xylene  
 R.T.: 4.453 min  
 Delta R.T.: -0.001 min  
 Response: 452572698  
 Conc: 49.61 ng/ml

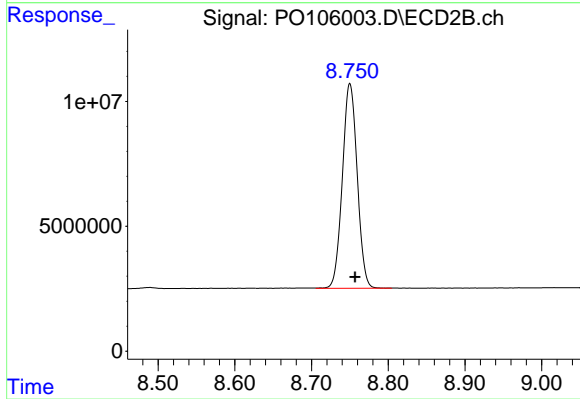
Instrument :  
 ECD\_O  
 ClientSampleId :  
 AR1248CCC500



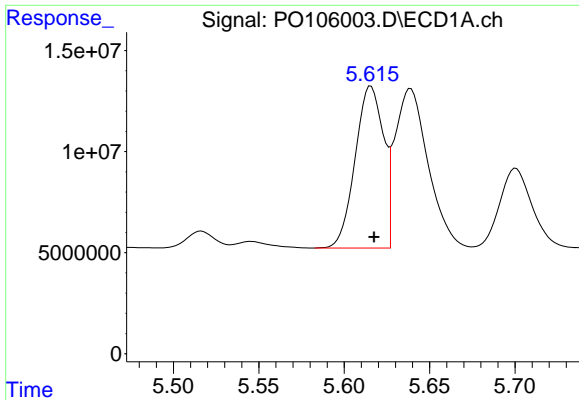
#1 Tetrachloro-m-xylene  
 R.T.: 3.719 min  
 Delta R.T.: -0.003 min  
 Response: 146017400  
 Conc: 54.05 ng/ml



#2 Decachlorobiphenyl  
 R.T.: 10.191 min  
 Delta R.T.: -0.004 min  
 Response: 262589154  
 Conc: 48.39 ng/ml



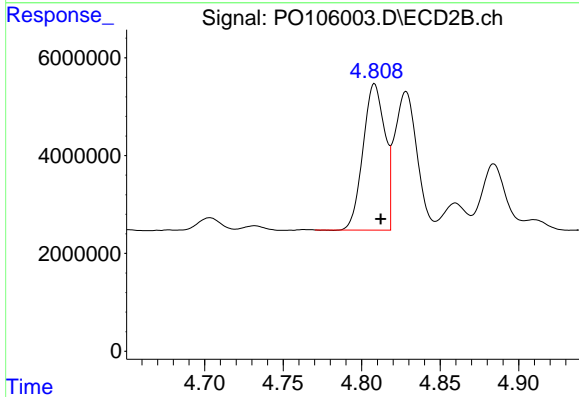
#2 Decachlorobiphenyl  
 R.T.: 8.750 min  
 Delta R.T.: -0.007 min  
 Response: 110365687  
 Conc: 50.56 ng/ml



#3 AR-1016-1

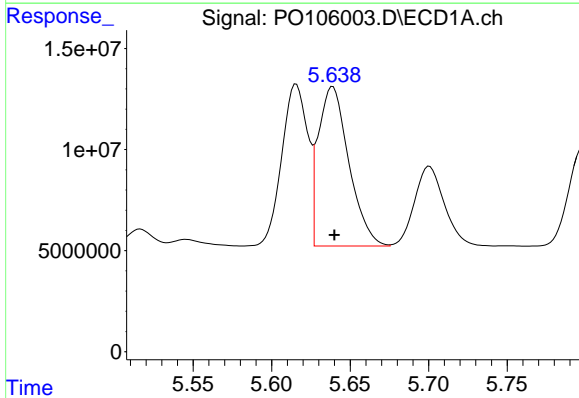
R.T.: 5.616 min  
 Delta R.T.: -0.002 min  
 Response: 92191974  
 Conc: 291.70 ng/ml

Instrument :  
 ECD\_O  
 ClientSampleId :  
 AR1248CCC500



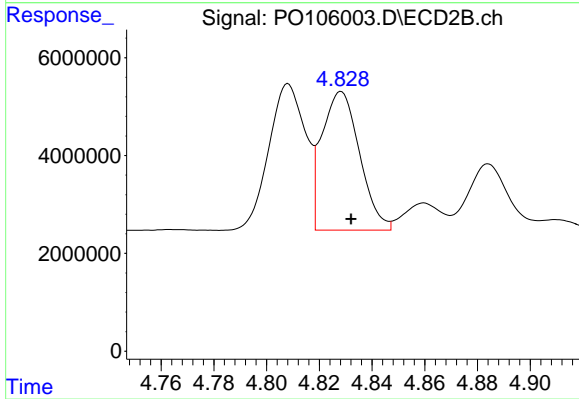
#3 AR-1016-1

R.T.: 4.808 min  
 Delta R.T.: -0.004 min  
 Response: 28845150  
 Conc: 301.72 ng/ml



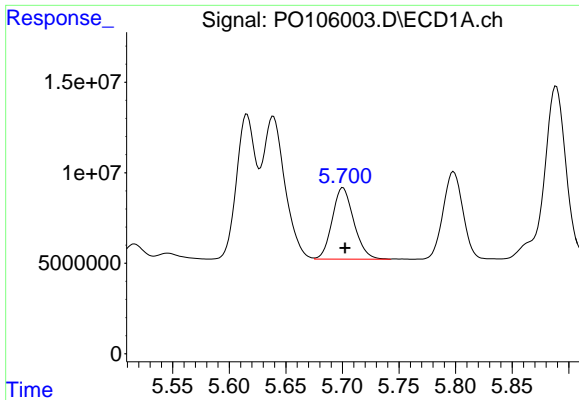
#4 AR-1016-2

R.T.: 5.639 min  
 Delta R.T.: 0.000 min  
 Response: 106617235  
 Conc: 242.54 ng/ml



#4 AR-1016-2

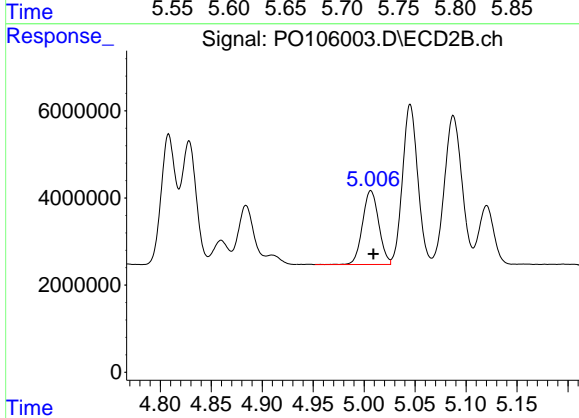
R.T.: 4.828 min  
 Delta R.T.: -0.004 min  
 Response: 28141079  
 Conc: 221.75 ng/ml



#5 AR-1016-3

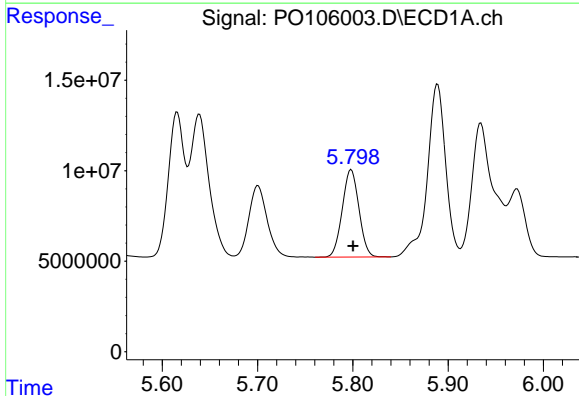
R.T.: 5.701 min  
 Delta R.T.: -0.002 min  
 Response: 52391626  
 Conc: 194.87 ng/ml

Instrument :  
 ECD\_O  
 ClientSampleId :  
 AR1248CCC500



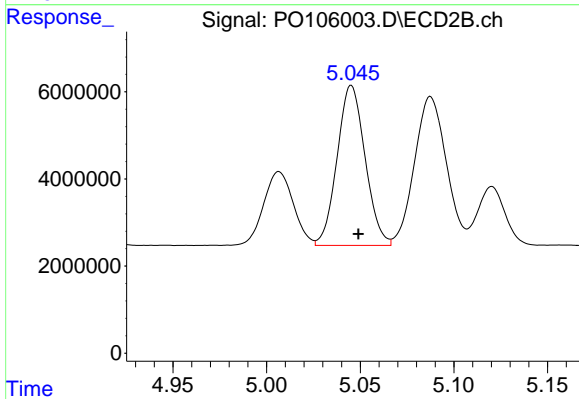
#5 AR-1016-3

R.T.: 5.007 min  
 Delta R.T.: -0.003 min  
 Response: 18791776  
 Conc: 268.63 ng/ml



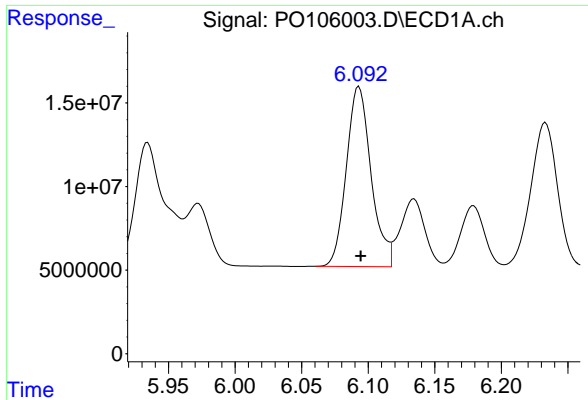
#6 AR-1016-4

R.T.: 5.798 min  
 Delta R.T.: -0.002 min  
 Response: 58584565  
 Conc: 266.13 ng/ml



#6 AR-1016-4

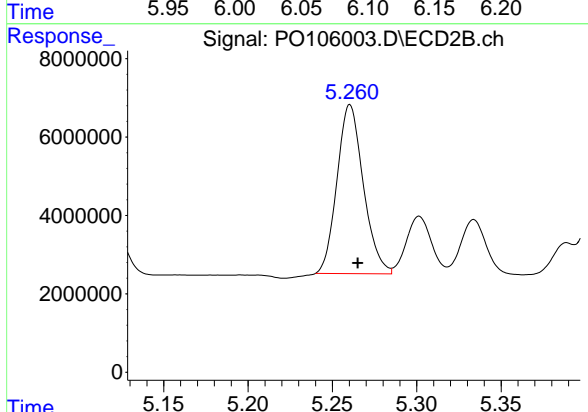
R.T.: 5.045 min  
 Delta R.T.: -0.004 min  
 Response: 38197113  
 Conc: 710.31 ng/ml



#7 AR-1016-5

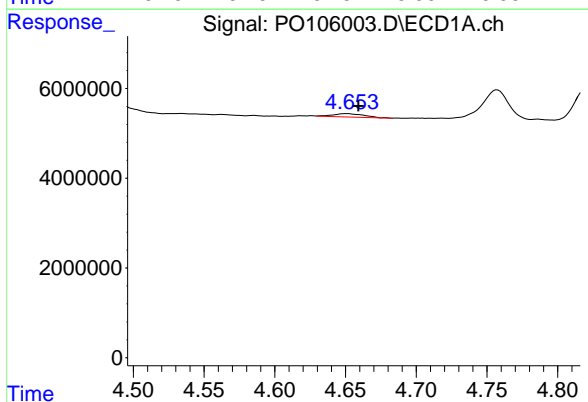
R.T.: 6.093 min  
 Delta R.T.: -0.001 min  
 Response: 139397572  
 Conc: 655.21 ng/ml

Instrument :  
 ECD\_O  
 ClientSampleId :  
 AR1248CCC500



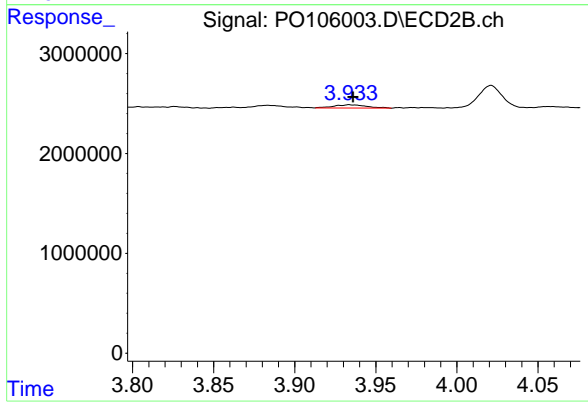
#7 AR-1016-5

R.T.: 5.260 min  
 Delta R.T.: -0.005 min  
 Response: 46891721  
 Conc: 681.46 ng/ml



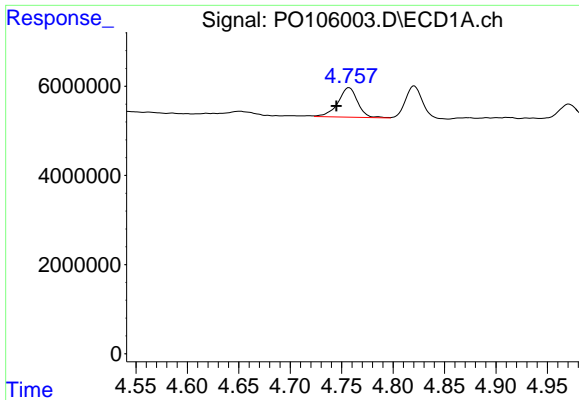
#8 AR-1221-1

R.T.: 4.651 min  
 Delta R.T.: -0.008 min  
 Response: 1149321  
 Conc: 10.44 ng/ml



#8 AR-1221-1

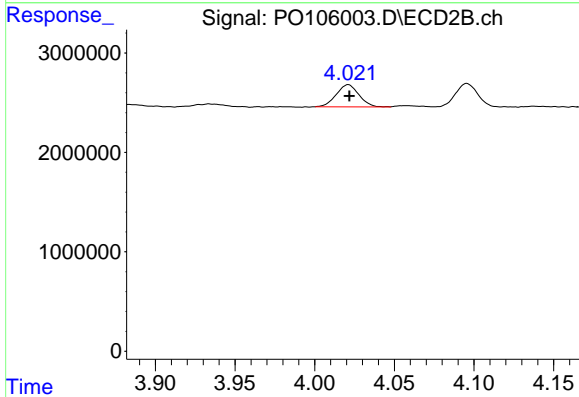
R.T.: 3.934 min  
 Delta R.T.: -0.002 min  
 Response: 452921  
 Conc: 14.84 ng/ml



#9 AR-1221-2

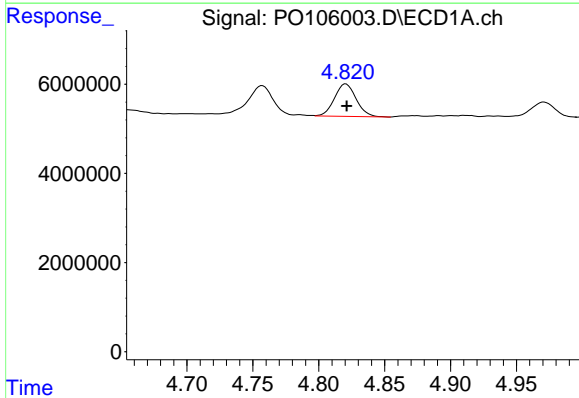
R.T.: 4.757 min  
 Delta R.T.: 0.012 min  
 Response: 8819222  
 Conc: 104.92 ng/ml

Instrument :  
 ECD\_O  
 ClientSampleId :  
 AR1248CCC500



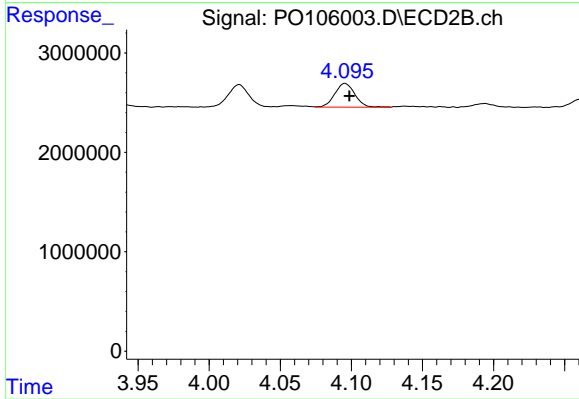
#9 AR-1221-2

R.T.: 4.021 min  
 Delta R.T.: 0.000 min  
 Response: 2219708  
 Conc: 97.12 ng/ml



#10 AR-1221-3

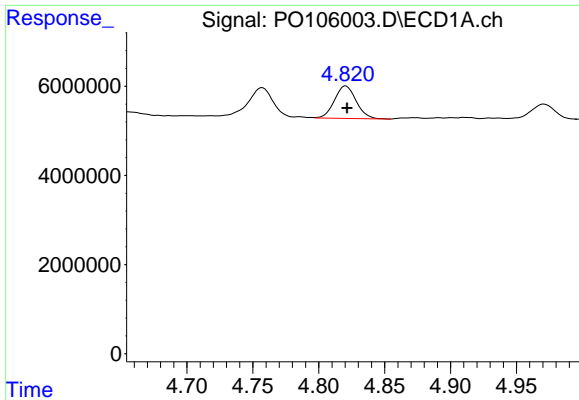
R.T.: 4.821 min  
 Delta R.T.: 0.000 min  
 Response: 8321693  
 Conc: 34.38 ng/ml



#10 AR-1221-3

R.T.: 4.096 min  
 Delta R.T.: -0.003 min  
 Response: 2324055  
 Conc: 32.56 ng/ml

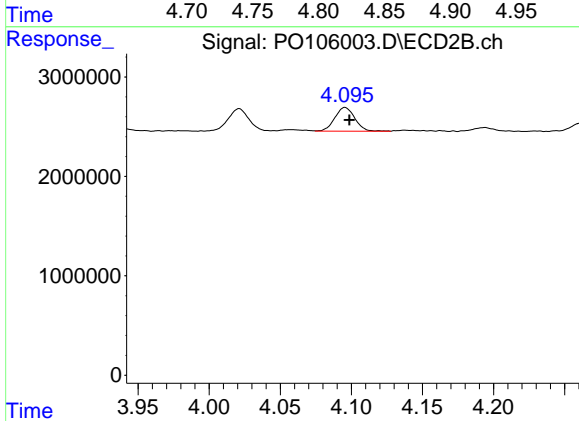




#11 AR-1232-1

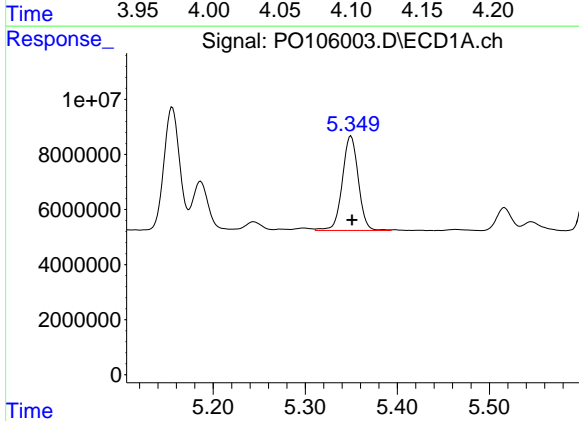
R.T.: 4.821 min  
 Delta R.T.: 0.000 min  
 Response: 8321693  
 Conc: 41.05 ng/ml

Instrument :  
 ECD\_O  
 ClientSampleId :  
 AR1248CCC500



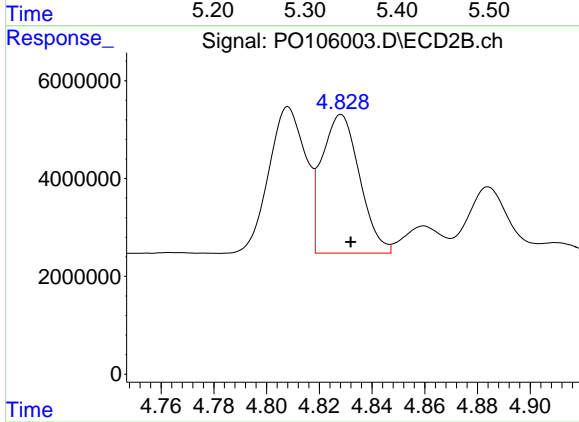
#11 AR-1232-1

R.T.: 4.096 min  
 Delta R.T.: -0.003 min  
 Response: 2324055  
 Conc: 39.56 ng/ml



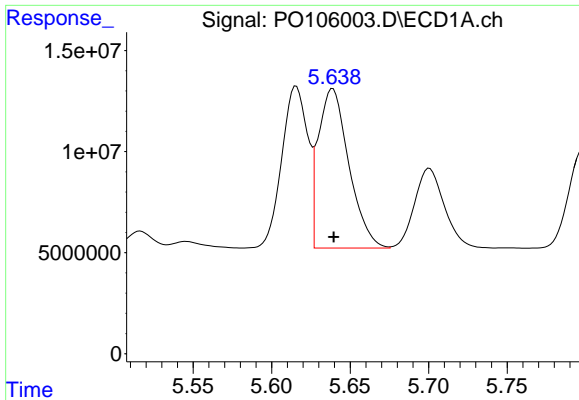
#12 AR-1232-2

R.T.: 5.350 min  
 Delta R.T.: -0.001 min  
 Response: 41367404  
 Conc: 380.76 ng/ml



#12 AR-1232-2

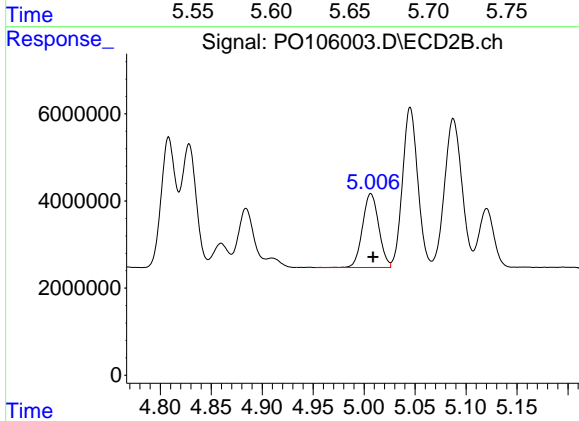
R.T.: 4.828 min  
 Delta R.T.: -0.004 min  
 Response: 28141079  
 Conc: 498.31 ng/ml



#13 AR-1232-3

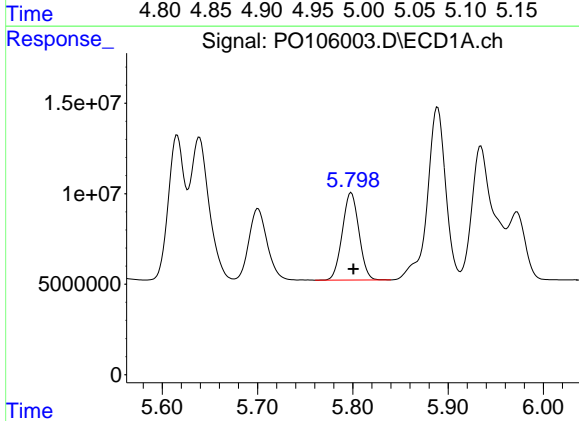
R.T.: 5.639 min  
 Delta R.T.: 0.000 min  
 Response: 106617235  
 Conc: 540.51 ng/ml

Instrument :  
 ECD\_O  
 ClientSampleId :  
 AR1248CCC500



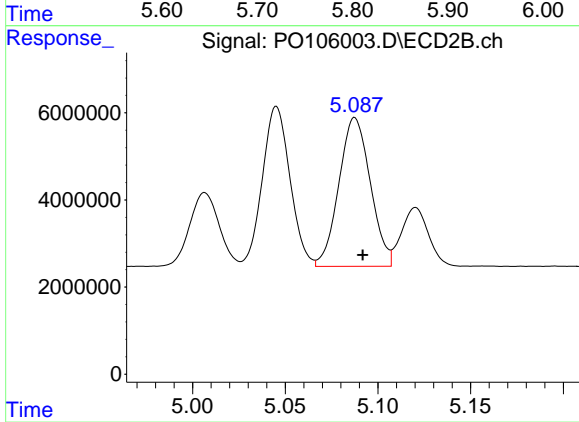
#13 AR-1232-3

R.T.: 5.007 min  
 Delta R.T.: -0.002 min  
 Response: 18791776  
 Conc: 608.19 ng/ml



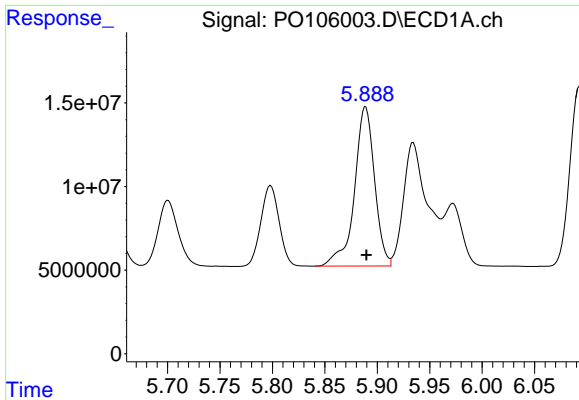
#14 AR-1232-4

R.T.: 5.798 min  
 Delta R.T.: -0.002 min  
 Response: 58584565  
 Conc: 595.03 ng/ml



#14 AR-1232-4

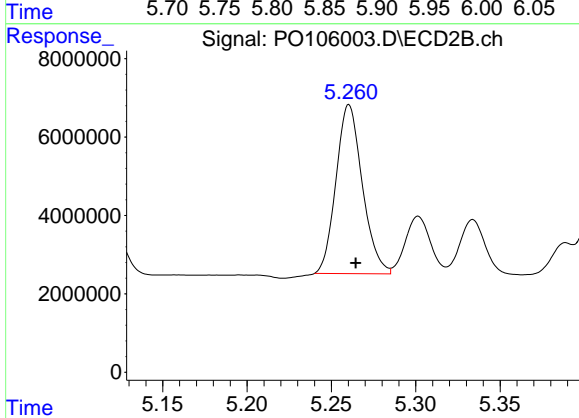
R.T.: 5.088 min  
 Delta R.T.: -0.004 min  
 Response: 40316941  
 Conc: 1492.16 ng/ml



#15 AR-1232-5

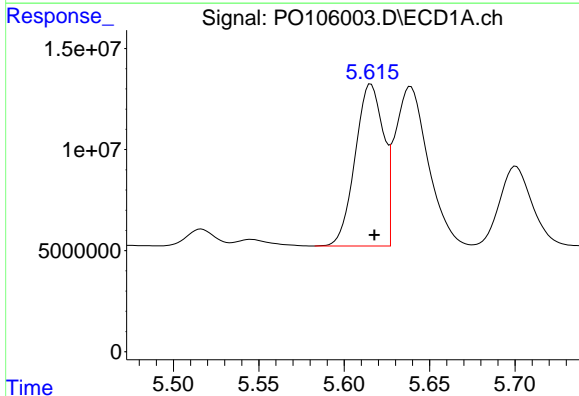
R.T.: 5.889 min  
 Delta R.T.: 0.000 min  
 Response: 127159459  
 Conc: 1670.30 ng/ml

Instrument :  
 ECD\_O  
 ClientSampleId :  
 AR1248CCC500



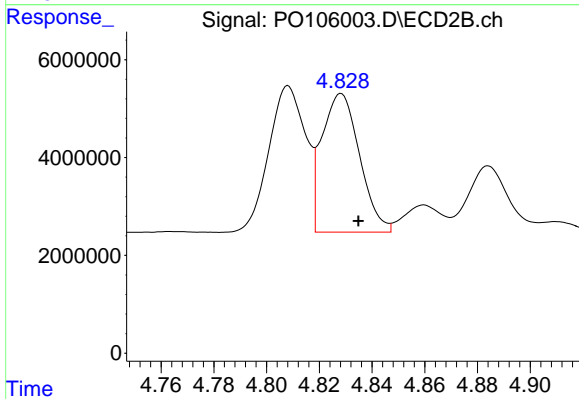
#15 AR-1232-5

R.T.: 5.260 min  
 Delta R.T.: -0.004 min  
 Response: 46891721  
 Conc: 1585.95 ng/ml



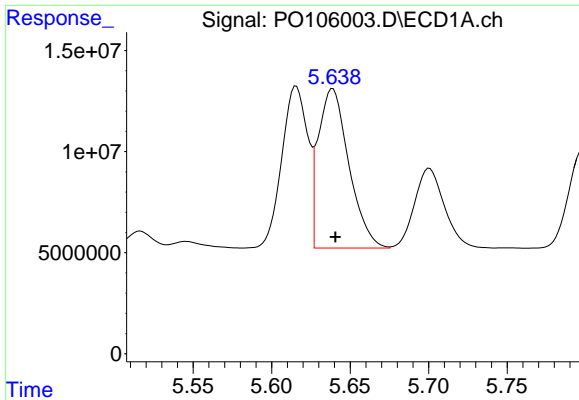
#16 AR-1242-1

R.T.: 5.616 min  
 Delta R.T.: -0.002 min  
 Response: 92191974  
 Conc: 381.08 ng/ml



#16 AR-1242-1

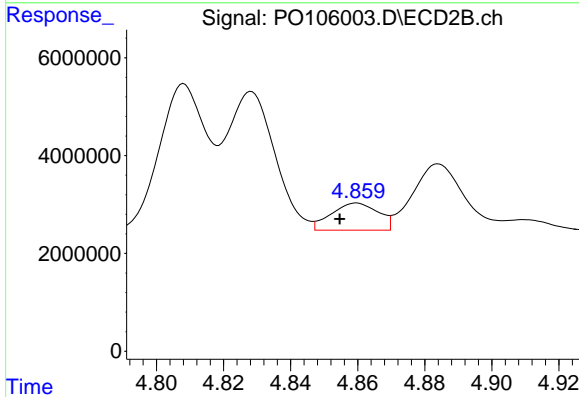
R.T.: 4.828 min  
 Delta R.T.: -0.007 min  
 Response: 28141079  
 Conc: 395.68 ng/ml



#17 AR-1242-2

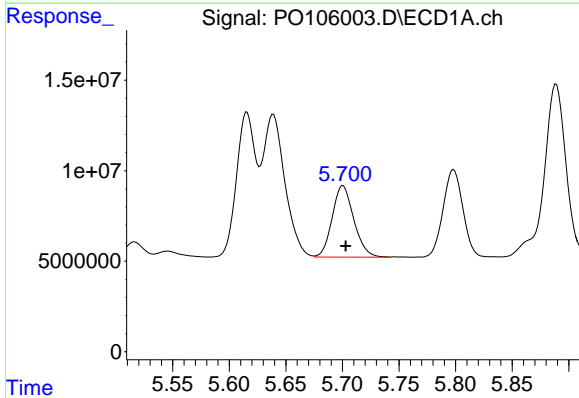
R.T.: 5.639 min  
 Delta R.T.: -0.002 min  
 Response: 106617235  
 Conc: 321.01 ng/ml

Instrument :  
 ECD\_O  
 ClientSampleId :  
 AR1248CCC500



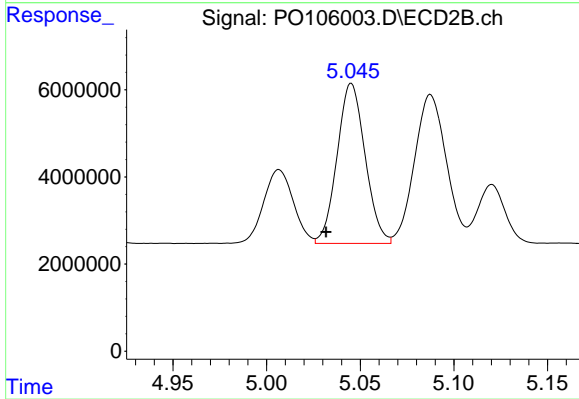
#17 AR-1242-2

R.T.: 4.860 min  
 Delta R.T.: 0.005 min  
 Response: 5382754  
 Conc: 57.45 ng/ml



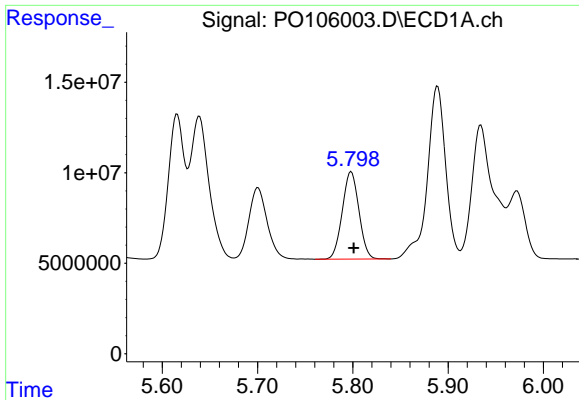
#18 AR-1242-3

R.T.: 5.701 min  
 Delta R.T.: -0.002 min  
 Response: 52391626  
 Conc: 255.04 ng/ml



#18 AR-1242-3

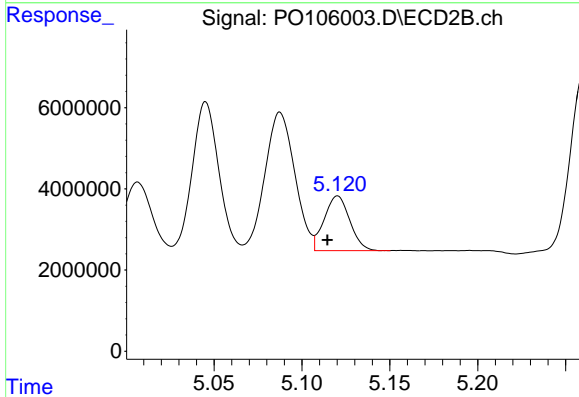
R.T.: 5.045 min  
 Delta R.T.: 0.013 min  
 Response: 38197113  
 Conc: 749.03 ng/ml



#19 AR-1242-4

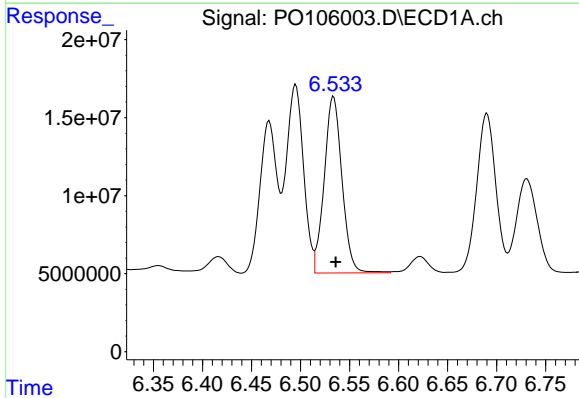
R.T.: 5.798 min  
 Delta R.T.: -0.003 min  
 Response: 58584565  
 Conc: 349.20 ng/ml

Instrument :  
 ECD\_O  
 ClientSampleId :  
 AR1248CCC500



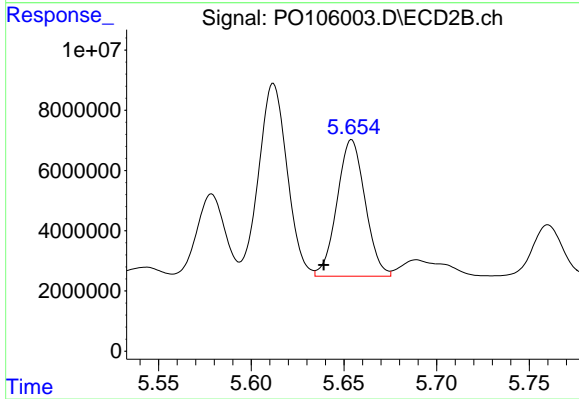
#19 AR-1242-4

R.T.: 5.120 min  
 Delta R.T.: 0.006 min  
 Response: 13673734  
 Conc: 266.71 ng/ml



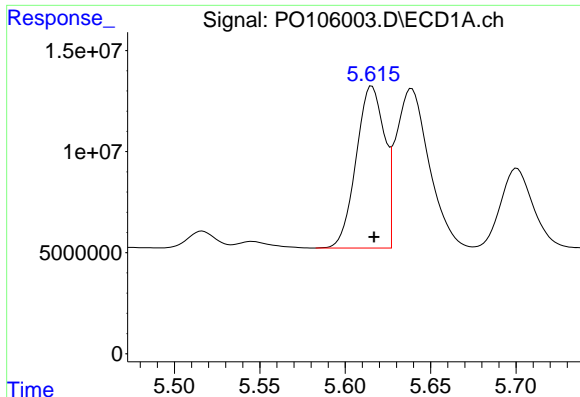
#20 AR-1242-5

R.T.: 6.534 min  
 Delta R.T.: -0.002 min  
 Response: 142292197  
 Conc: 835.21 ng/ml



#20 AR-1242-5

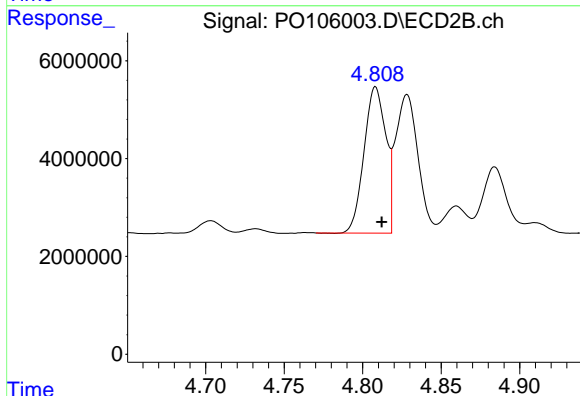
R.T.: 5.654 min  
 Delta R.T.: 0.015 min  
 Response: 47845344  
 Conc: 740.26 ng/ml



#21 AR-1248-1

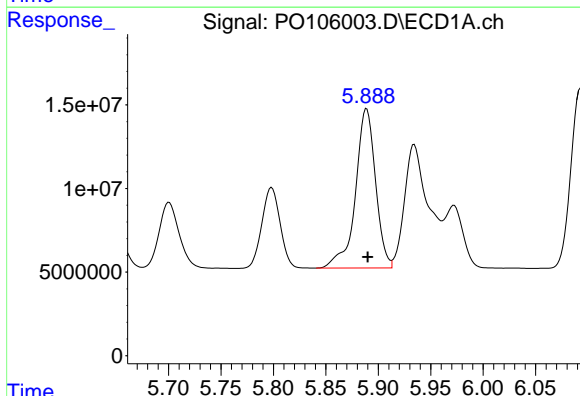
R.T.: 5.616 min  
 Delta R.T.: -0.001 min  
 Response: 92191974  
 Conc: 490.39 ng/ml

Instrument :  
 ECD\_O  
 ClientSampleId :  
 AR1248CCC500



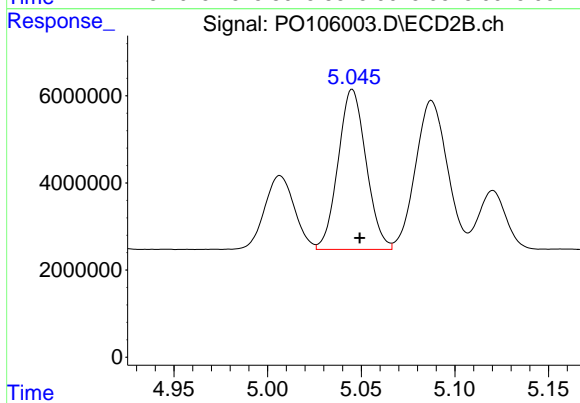
#21 AR-1248-1

R.T.: 4.808 min  
 Delta R.T.: -0.004 min  
 Response: 28845150  
 Conc: 515.01 ng/ml



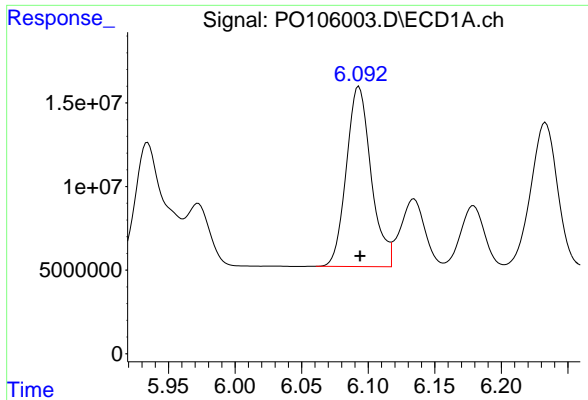
#22 AR-1248-2

R.T.: 5.889 min  
 Delta R.T.: 0.000 min  
 Response: 127159459  
 Conc: 492.12 ng/ml



#22 AR-1248-2

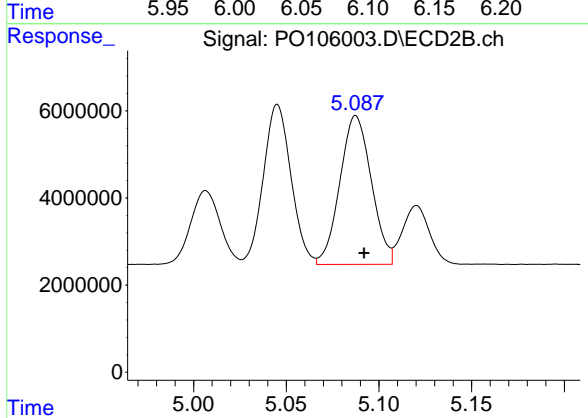
R.T.: 5.045 min  
 Delta R.T.: -0.004 min  
 Response: 38197113  
 Conc: 513.11 ng/ml



#23 AR-1248-3

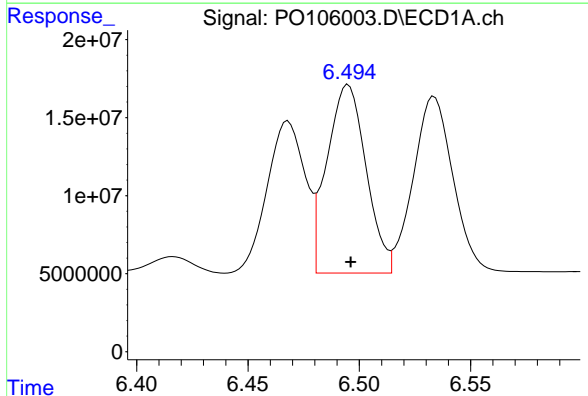
R.T.: 6.093 min  
 Delta R.T.: 0.000 min  
 Response: 139397572  
 Conc: 488.05 ng/ml

Instrument :  
 ECD\_O  
 ClientSampleId :  
 AR1248CCC500



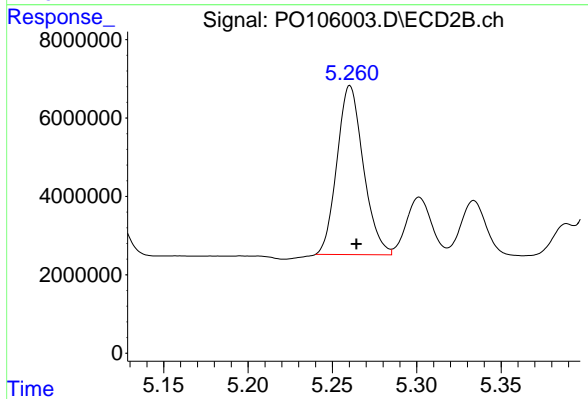
#23 AR-1248-3

R.T.: 5.088 min  
 Delta R.T.: -0.004 min  
 Response: 40316941  
 Conc: 513.31 ng/ml



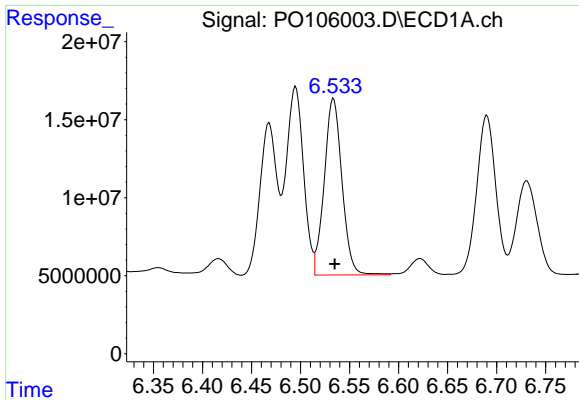
#24 AR-1248-4

R.T.: 6.495 min  
 Delta R.T.: -0.001 min  
 Response: 147589764  
 Conc: 468.11 ng/ml



#24 AR-1248-4

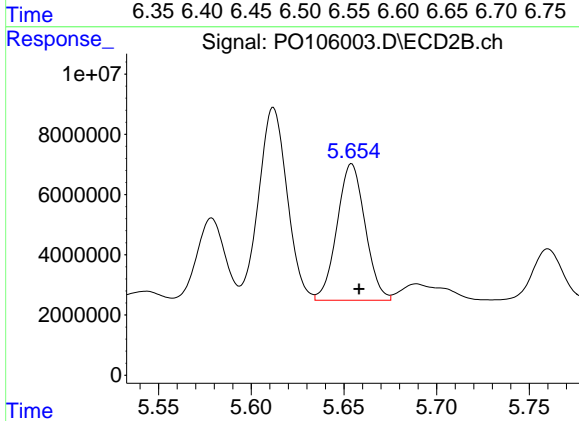
R.T.: 5.260 min  
 Delta R.T.: -0.004 min  
 Response: 46891721  
 Conc: 503.60 ng/ml



#25 AR-1248-5

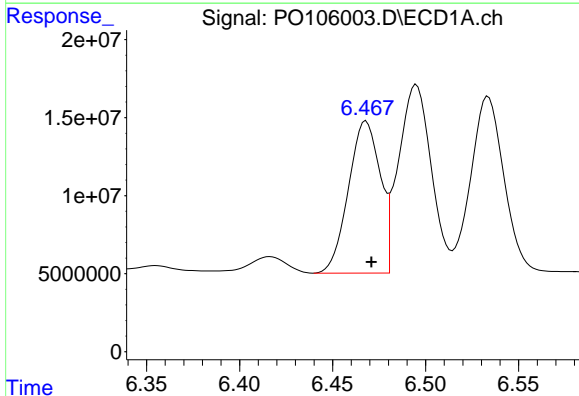
R.T.: 6.534 min  
 Delta R.T.: -0.001 min  
 Response: 142292197  
 Conc: 468.78 ng/ml

Instrument :  
 ECD\_O  
 ClientSampleId :  
 AR1248CCC500



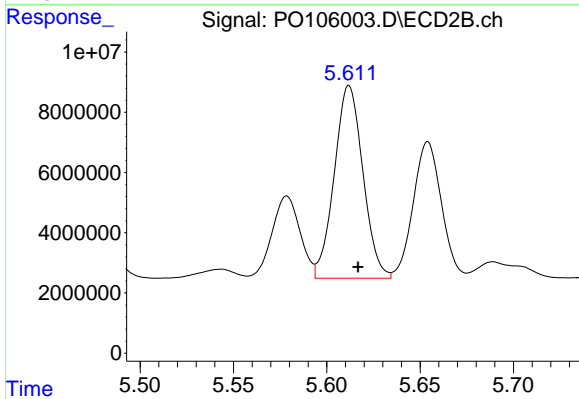
#25 AR-1248-5

R.T.: 5.654 min  
 Delta R.T.: -0.004 min  
 Response: 47845344  
 Conc: 522.13 ng/ml



#26 AR-1254-1

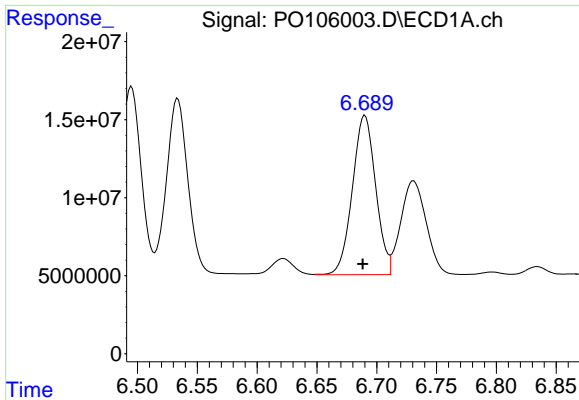
R.T.: 6.468 min  
 Delta R.T.: -0.003 min  
 Response: 115795920  
 Conc: 375.10 ng/ml



#26 AR-1254-1

R.T.: 5.612 min  
 Delta R.T.: -0.005 min  
 Response: 68345977  
 Conc: 506.56 ng/ml

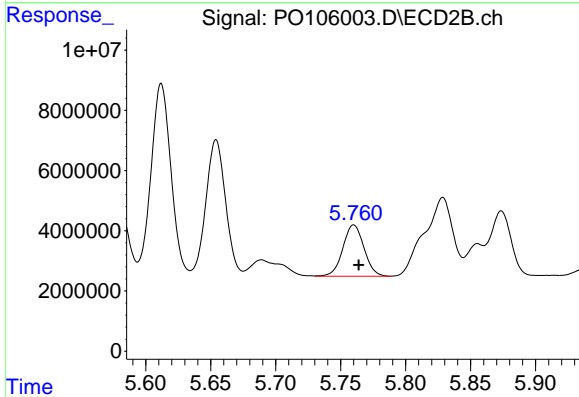




#27 AR-1254-2

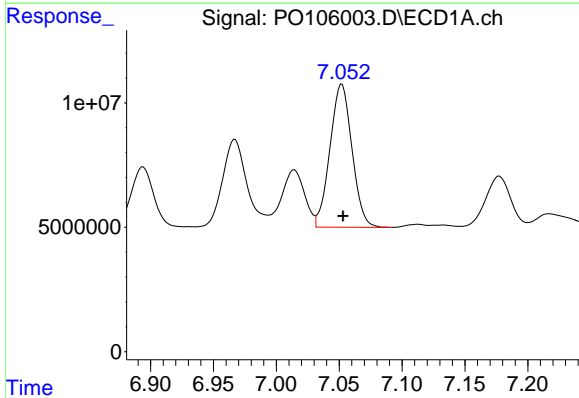
R.T.: 6.690 min  
 Delta R.T.: 0.002 min  
 Response: 138080359  
 Conc: 299.70 ng/ml

Instrument :  
 ECD\_O  
 ClientSampleId :  
 AR1248CCC500



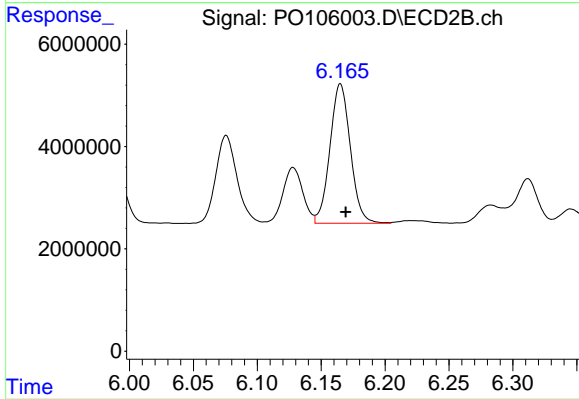
#27 AR-1254-2

R.T.: 5.760 min  
 Delta R.T.: -0.004 min  
 Response: 19307924  
 Conc: 159.08 ng/ml



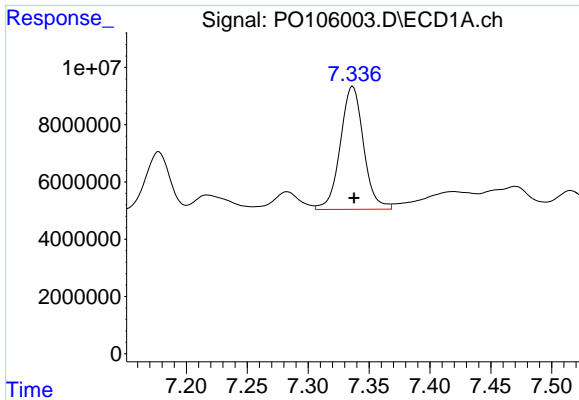
#28 AR-1254-3

R.T.: 7.052 min  
 Delta R.T.: -0.001 min  
 Response: 70249921  
 Conc: 148.70 ng/ml



#28 AR-1254-3

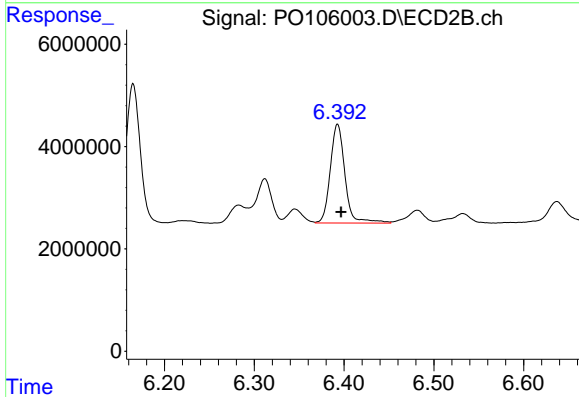
R.T.: 6.165 min  
 Delta R.T.: -0.004 min  
 Response: 30320174  
 Conc: 157.30 ng/ml



#29 AR-1254-4

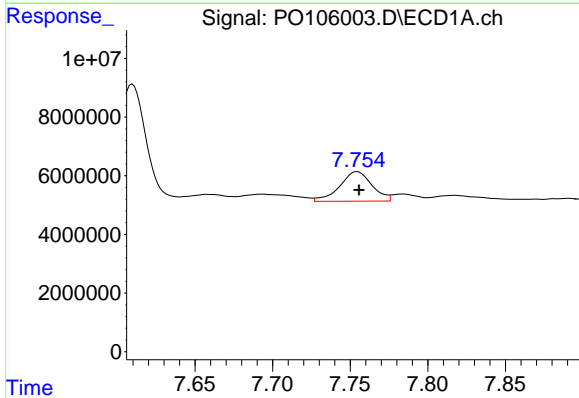
R.T.: 7.337 min  
 Delta R.T.: 0.000 min  
 Response: 56994980  
 Conc: 163.61 ng/ml

Instrument :  
 ECD\_O  
 ClientSampleId :  
 AR1248CCC500



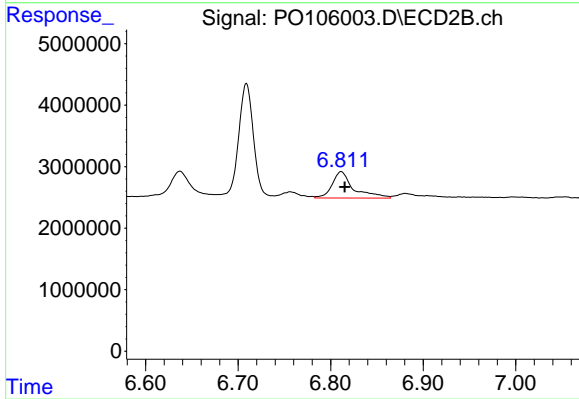
#29 AR-1254-4

R.T.: 6.393 min  
 Delta R.T.: -0.004 min  
 Response: 22041072  
 Conc: 181.75 ng/ml



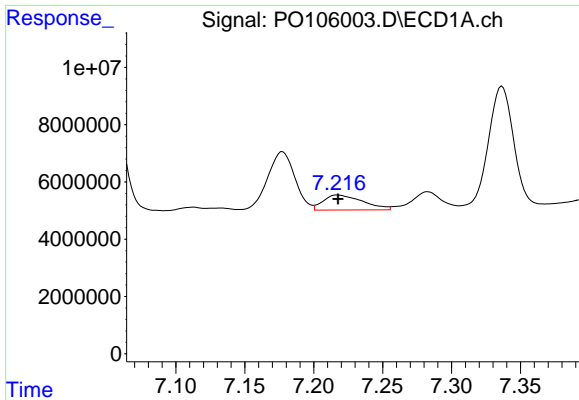
#30 AR-1254-5

R.T.: 7.755 min  
 Delta R.T.: -0.001 min  
 Response: 14549705  
 Conc: 39.85 ng/ml



#30 AR-1254-5

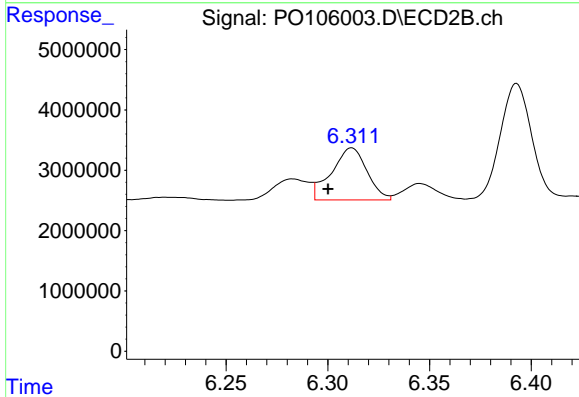
R.T.: 6.811 min  
 Delta R.T.: -0.004 min  
 Response: 6900874  
 Conc: 39.03 ng/ml



#31 AR-1260-1

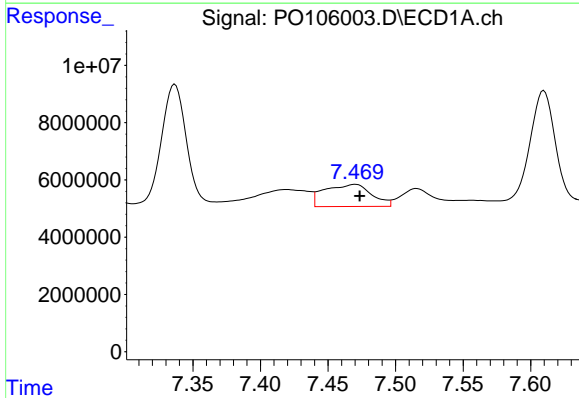
R.T.: 7.217 min  
 Delta R.T.: 0.000 min  
 Response: 10432029  
 Conc: 29.07 ng/ml

Instrument :  
 ECD\_O  
 ClientSampleId :  
 AR1248CCC500



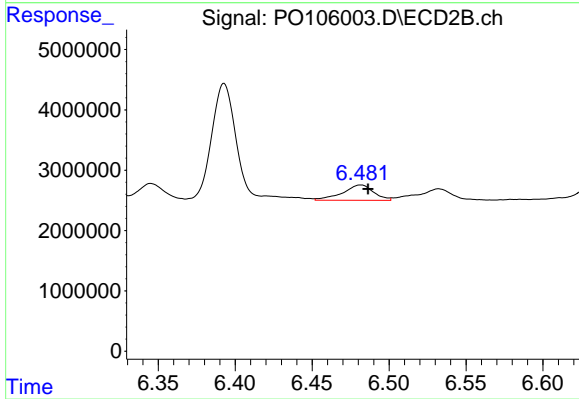
#31 AR-1260-1

R.T.: 6.312 min  
 Delta R.T.: 0.012 min  
 Response: 10479501  
 Conc: 79.55 ng/ml



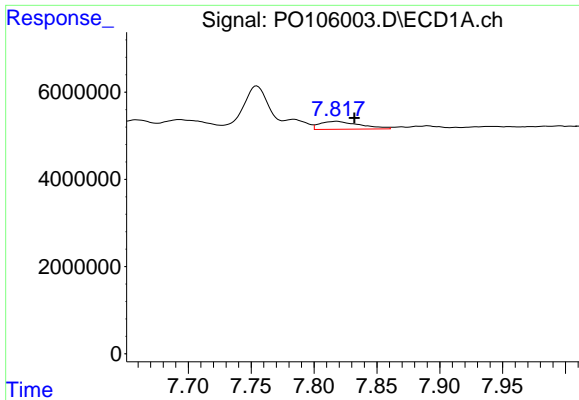
#32 AR-1260-2

R.T.: 7.470 min  
 Delta R.T.: -0.003 min  
 Response: 18712443  
 Conc: 44.55 ng/ml



#32 AR-1260-2

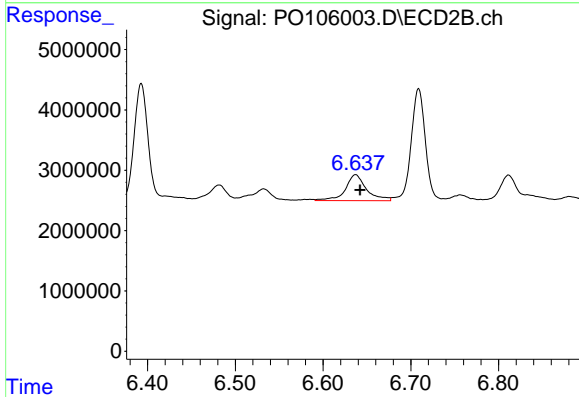
R.T.: 6.482 min  
 Delta R.T.: -0.005 min  
 Response: 3528068  
 Conc: 21.50 ng/ml



#33 AR-1260-3

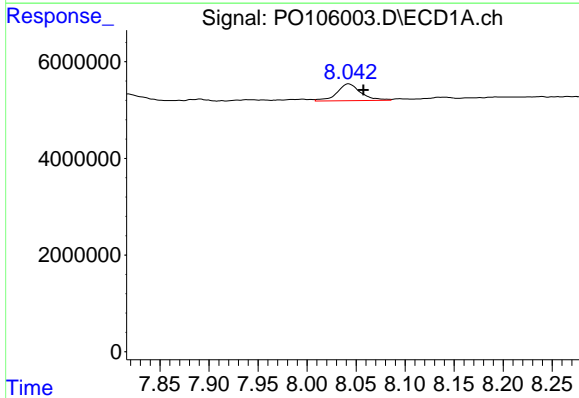
R.T.: 7.818 min  
 Delta R.T.: -0.014 min  
 Response: 4059741  
 Conc: 15.18 ng/ml

Instrument :  
 ECD\_O  
 ClientSampleId :  
 AR1248CCC500



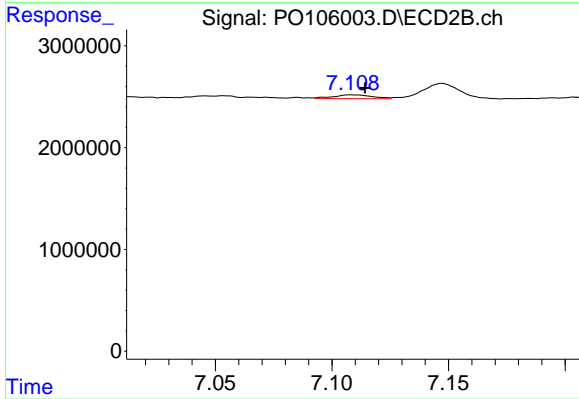
#33 AR-1260-3

R.T.: 6.637 min  
 Delta R.T.: -0.005 min  
 Response: 7171161  
 Conc: 42.49 ng/ml



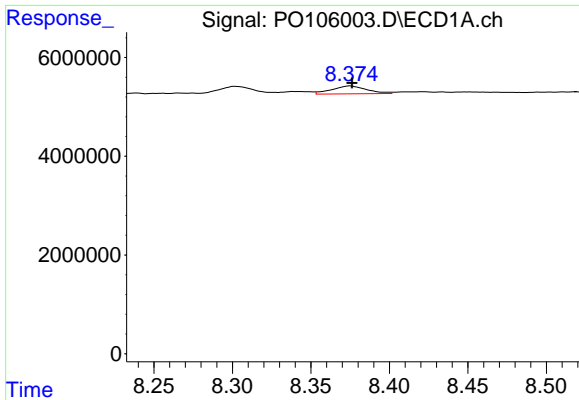
#34 AR-1260-4

R.T.: 8.042 min  
 Delta R.T.: -0.015 min  
 Response: 5858365  
 Conc: 18.90 ng/ml



#34 AR-1260-4

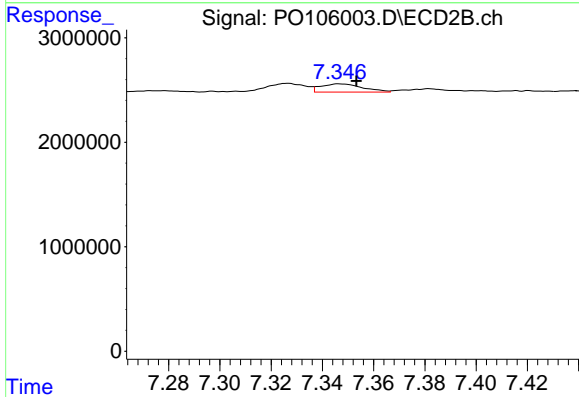
R.T.: 7.108 min  
 Delta R.T.: -0.006 min  
 Response: 433504  
 Conc: 3.91 ng/ml



#35 AR-1260-5

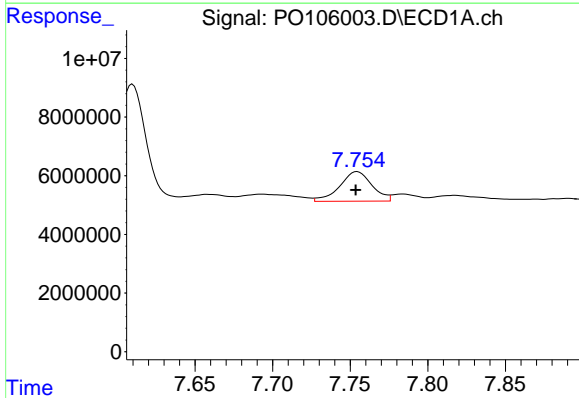
R.T.: 8.375 min  
 Delta R.T.: -0.001 min  
 Response: 2481921  
 Conc: 4.46 ng/ml

Instrument :  
 ECD\_O  
 ClientSampleId :  
 AR1248CCC500



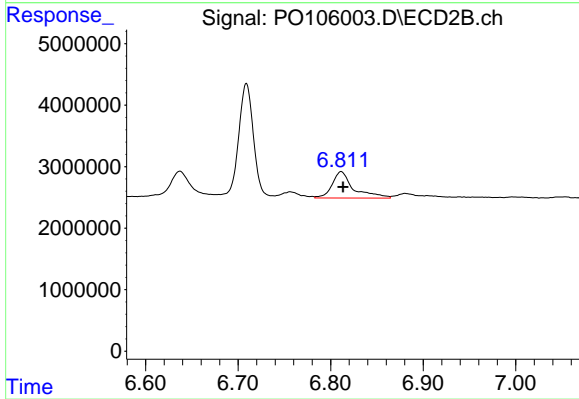
#35 AR-1260-5

R.T.: 7.347 min  
 Delta R.T.: -0.006 min  
 Response: 891770  
 Conc: 3.29 ng/ml



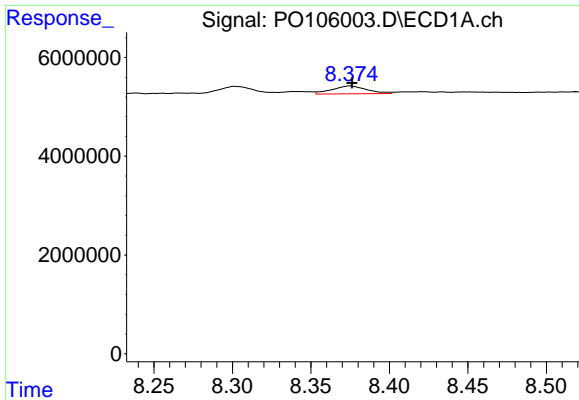
#36 AR-1262-1

R.T.: 7.755 min  
 Delta R.T.: 0.000 min  
 Response: 14549705  
 Conc: 50.10 ng/ml



#36 AR-1262-1

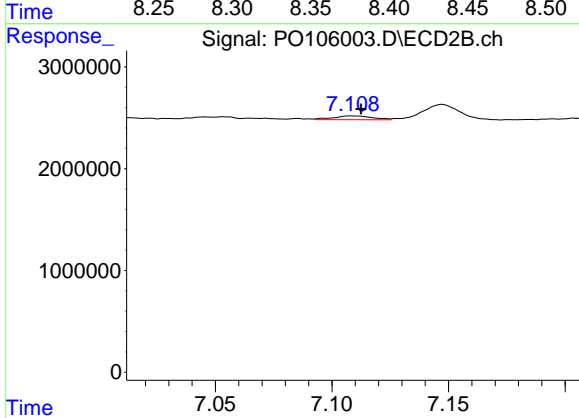
R.T.: 6.811 min  
 Delta R.T.: -0.002 min  
 Response: 6900874  
 Conc: 71.58 ng/ml



#37 AR-1262-2

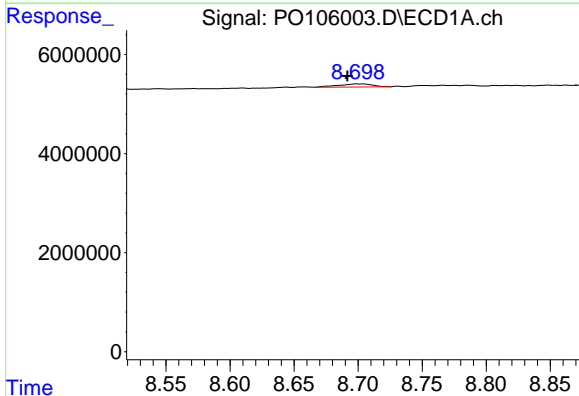
R.T.: 8.375 min  
 Delta R.T.: -0.001 min  
 Response: 2481921  
 Conc: 3.45 ng/ml

Instrument :  
 ECD\_O  
 ClientSampleId :  
 AR1248CCC500



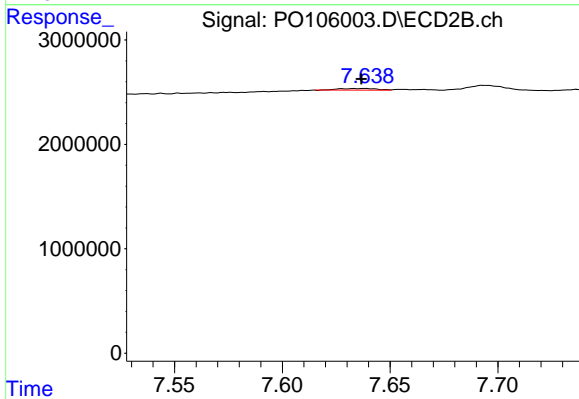
#37 AR-1262-2

R.T.: 7.108 min  
 Delta R.T.: -0.004 min  
 Response: 433504  
 Conc: 2.79 ng/ml



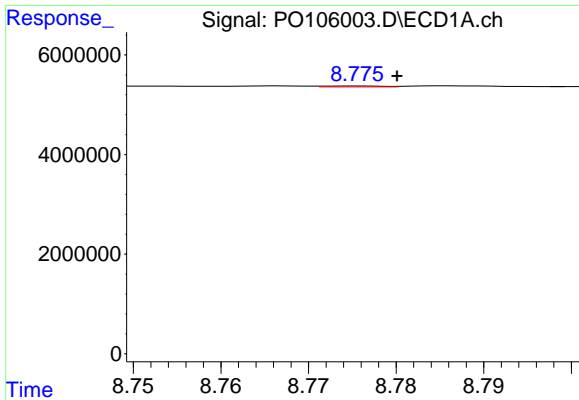
#38 AR-1262-3

R.T.: 8.699 min  
 Delta R.T.: 0.007 min  
 Response: 1168691  
 Conc: 2.43 ng/ml



#38 AR-1262-3

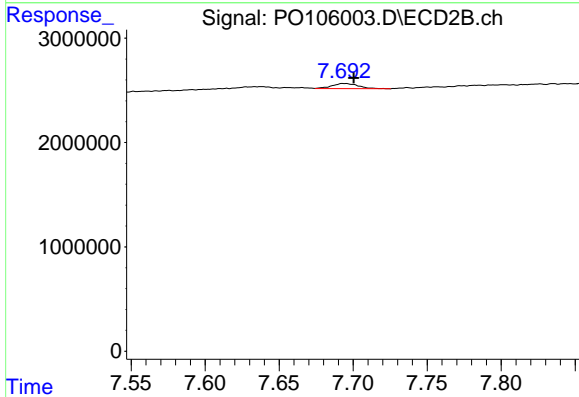
R.T.: 7.638 min  
 Delta R.T.: 0.001 min  
 Response: 198149  
 Conc: 1.74 ng/ml



#39 AR-1262-4

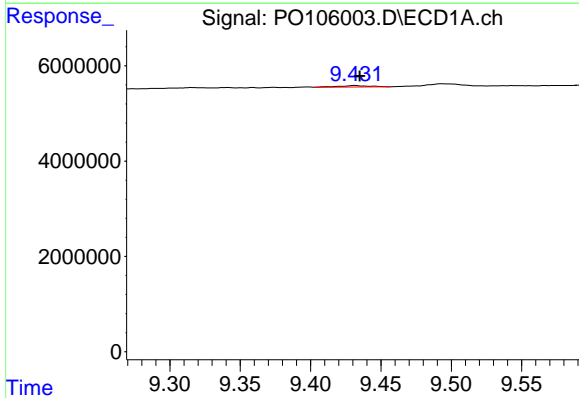
R.T.: 8.776 min  
 Delta R.T.: -0.005 min  
 Response: 88741  
 Conc: 0.25 ng/ml

Instrument :  
 ECD\_O  
 ClientSampleId :  
 AR1248CCC500



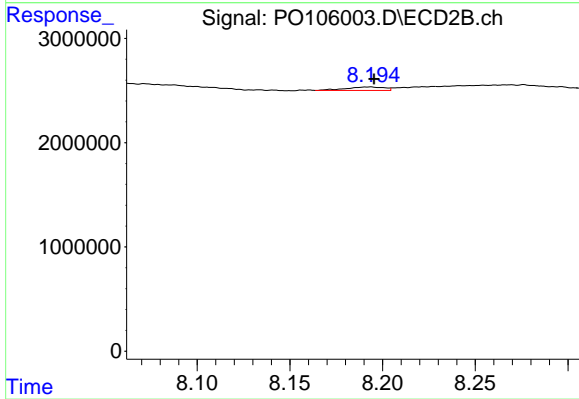
#39 AR-1262-4

R.T.: 7.694 min  
 Delta R.T.: -0.007 min  
 Response: 608065  
 Conc: 2.55 ng/ml



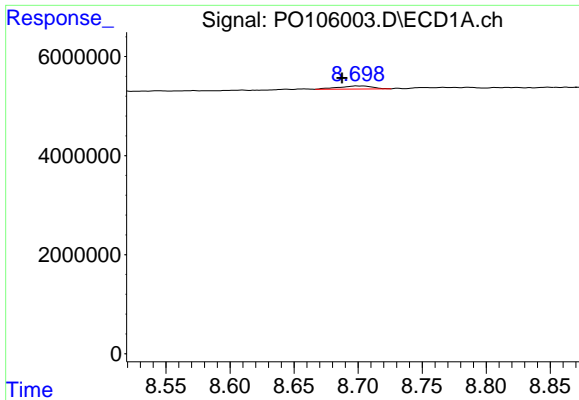
#40 AR-1262-5

R.T.: 9.431 min  
 Delta R.T.: -0.004 min  
 Response: 419625  
 Conc: 1.63 ng/ml



#40 AR-1262-5

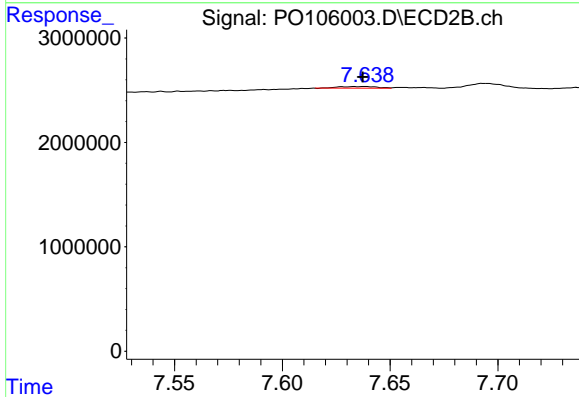
R.T.: 8.193 min  
 Delta R.T.: -0.002 min  
 Response: 476764  
 Conc: 4.35 ng/ml



#41 AR-1268-1

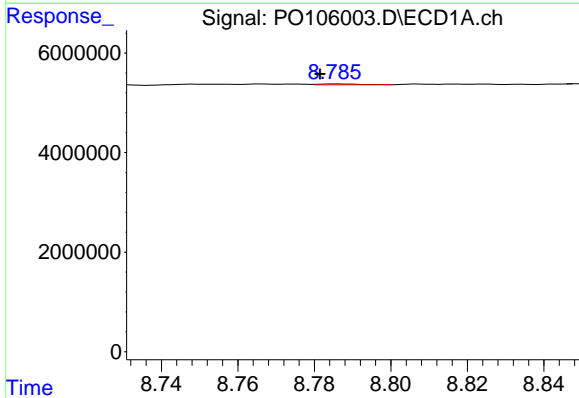
R.T.: 8.699 min  
 Delta R.T.: 0.011 min  
 Response: 1168691  
 Conc: 1.43 ng/ml

Instrument :  
 ECD\_O  
 ClientSampleId :  
 AR1248CCC500



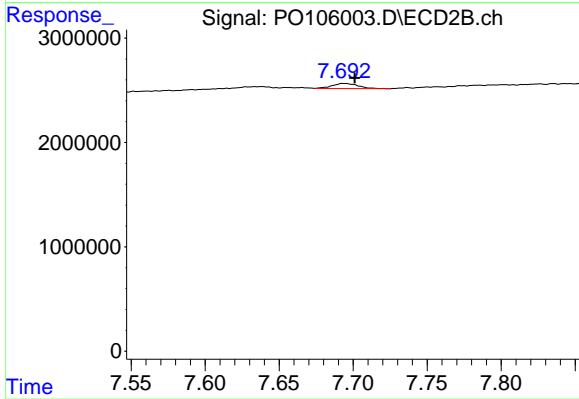
#41 AR-1268-1

R.T.: 7.638 min  
 Delta R.T.: 0.000 min  
 Response: 198149  
 Conc: 0.58 ng/ml



#42 AR-1268-2

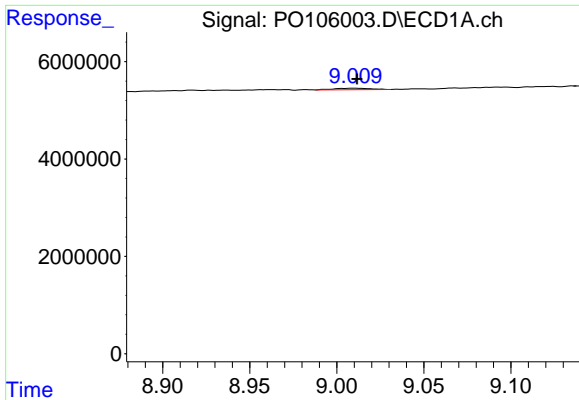
R.T.: 8.786 min  
 Delta R.T.: 0.004 min  
 Response: 135723  
 Conc: 0.19 ng/ml



#42 AR-1268-2

R.T.: 7.694 min  
 Delta R.T.: -0.007 min  
 Response: 608065  
 Conc: 1.89 ng/ml

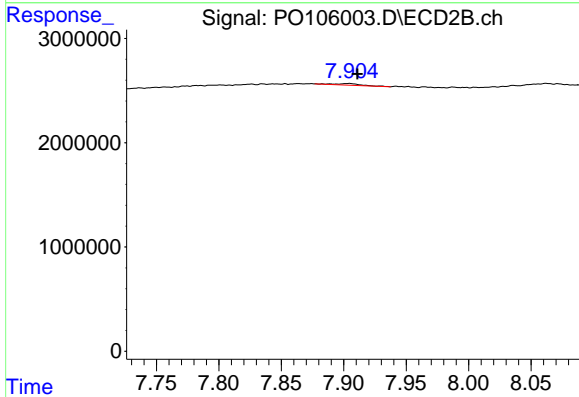




#43 AR-1268-3

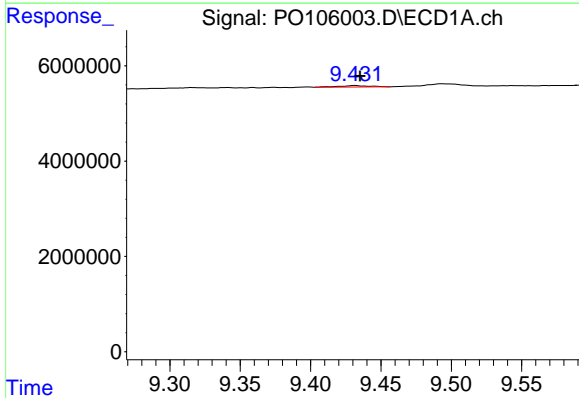
R.T.: 9.011 min  
 Delta R.T.: -0.001 min  
 Response: 420900  
 Conc: 0.68 ng/ml

Instrument :  
 ECD\_O  
 ClientSampleId :  
 AR1248CCC500



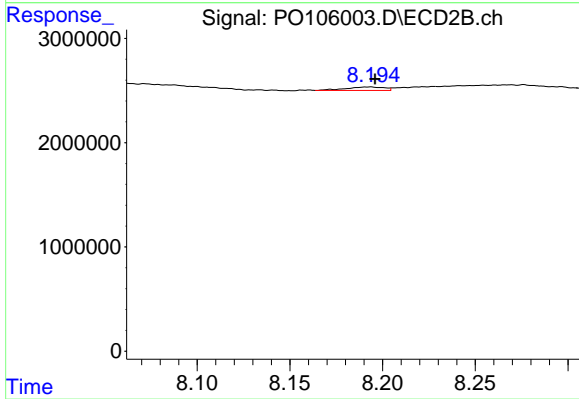
#43 AR-1268-3

R.T.: 7.904 min  
 Delta R.T.: -0.006 min  
 Response: 206887  
 Conc: 0.77 ng/ml



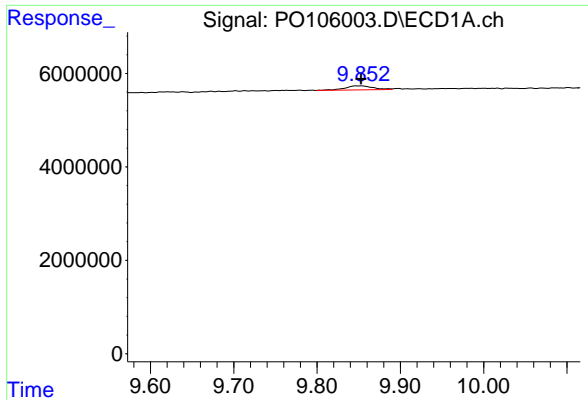
#44 AR-1268-4

R.T.: 9.431 min  
 Delta R.T.: -0.004 min  
 Response: 419625  
 Conc: 1.55 ng/ml



#44 AR-1268-4

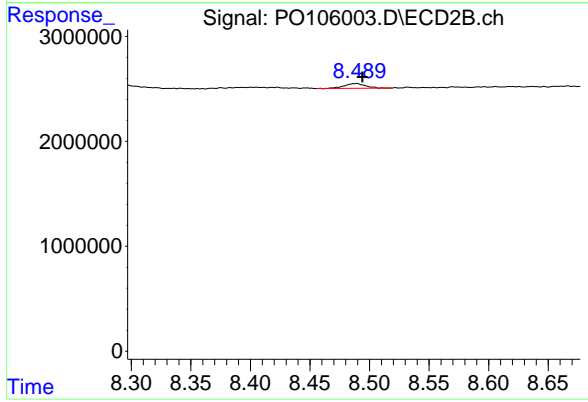
R.T.: 8.193 min  
 Delta R.T.: -0.003 min  
 Response: 476764  
 Conc: 4.21 ng/ml



#45 AR-1268-5

R.T.: 9.853 min  
 Delta R.T.: 0.000 min  
 Response: 2030447  
 Conc: 1.01 ng/ml

Instrument :  
 ECD\_O  
 ClientSampleId :  
 AR1248CCC500



#45 AR-1268-5

R.T.: 8.489 min  
 Delta R.T.: -0.005 min  
 Response: 566360  
 Conc: 0.66 ng/ml