

Data Path : Z:\pestpcbsrv\HPCHEM1\ECD\_0\Data\P0082924\  
 Data File : PO106026.D  
 Signal(s) : Signal #1: ECD1A.ch Signal #2: ECD2B.ch  
 Acq On : 29 Aug 2024 16:55  
 Operator : YP/AJ  
 Sample : P3775-02  
 Misc :  
 ALS Vial : 22 Sample Multiplier: 1

Instrument :  
 ECD\_0  
 ClientSampleId :  
 S-865-N-SO-1-1.5-082824

Integration File signal 1: autoint1.e  
 Integration File signal 2: autoint2.e  
 Quant Time: Aug 30 03:54:35 2024  
 Quant Method : Z:\pestpcbsrv\HPCHEM1\ECD\_0\methods\P0082624.M  
 Quant Title : GC EXTRACTABLES  
 QLast Update : Tue Aug 27 06:50:58 2024  
 Response via : Initial Calibration  
 Integrator: ChemStation

Volume Inj. : 2 µl  
 Signal #1 Phase : ZB-MR1 Signal #2 Phase: ZB-MR2  
 Signal #1 Info : 30Mx0.32mmx 0.50µ Signal #2 Info : 30M x 0.32mm x 0.25µm

Compound	RT#1	RT#2	Resp#1	Resp#2	ng/ml	ng/ml
System Monitoring Compounds						
1) SA Tetrachlo...	4.454	3.721	146.8E6	49505283	16.094	18.323
2) SA Decachlor...	10.195	8.752	71657550	27710048	13.204	12.693
Target Compounds						
3) L1 AR-1016-1	5.592	4.812	795686	491851	2.518	5.145 #
4) L1 AR-1016-2	5.646	4.828	8014474	325192	18.232	2.562 #
5) L1 AR-1016-3	5.700	5.009	1025187	864187	3.813	12.353 #
6) L1 AR-1016-4	5.797	5.048	151192	1869747	0.687	34.770 #
7) L1 AR-1016-5	6.093	5.257	1195239	855038	5.618	12.426 #
8) L2 AR-1221-1	4.660	3.939	1506257	355618	13.683	11.654
9) L2 AR-1221-2	4.759	4.023	2474450	784884	29.437	34.342
10) L2 AR-1221-3	4.839	4.095	266247	251426	1.100	3.523 #
11) L3 AR-1232-1	4.839	4.095	266247	251426	1.313	4.280 #
12) L3 AR-1232-2	5.352	4.828	10581126	325192	97.392	5.758 #
13) L3 AR-1232-3	5.646	5.009	8014474	864187	40.631	27.969 #
14) L3 AR-1232-4	5.797	5.091	151192	702341	1.536	25.994 #
15) L3 AR-1232-5	5.894	5.257	3061199	855038	40.210	28.919 #
16) L4 AR-1242-1	5.592	4.828	795686	325192	3.289	4.572 #
17) L4 AR-1242-2	5.646	4.862	8014474	534433	24.131	5.704 #
18) L4 AR-1242-3	5.700	5.048	1025187	1869747	4.991	36.665 #
19) L4 AR-1242-4	5.797	5.120	151192	767779	0.901	14.976 #
20) L4 AR-1242-5	6.540	5.657	5994744	3698490	35.187	57.223 #
21) L5 AR-1248-1	5.592	4.812	795686	491851	4.232	8.782 #
22) L5 AR-1248-2	5.894	5.048	3061199	1869747	11.847	25.117 #
23) L5 AR-1248-3	6.093	5.091	1195239	702341	4.185	8.942 #
24) L5 AR-1248-4	6.503	5.257	2871517	855038	9.107	9.183
25) L5 AR-1248-5	6.540	5.657	5994744	3698490	19.749	40.361 #
26) L6 AR-1254-1	6.471	5.616	33810896	15271768	109.524	113.189
27) L6 AR-1254-2	6.688	5.762	29884857	15358704	64.865	126.544 #
28) L6 AR-1254-3	7.054	6.182	47948984	68564691	101.498	355.702 #
29) L6 AR-1254-4	7.338	6.392	20231339	3262757	58.078	26.904 #
30) L6 AR-1254-5	7.754	6.812	292.8E6	111.2E6	801.882	628.697
31) L7 AR-1260-1	7.218	6.297	170.9E6	71626317	476.206	543.686
32) L7 AR-1260-2	7.474	6.483	173.5E6	75034140	412.931	457.219
33) L7 AR-1260-3	7.832	6.639	141.6E6	75715092	529.329	448.638
34) L7 AR-1260-4	8.058	7.111	178.5E6	63755822	575.802	575.304
35) L7 AR-1260-5	8.377	7.349	333.8E6	151.3E6	599.932	557.694
36) L8 AR-1262-1	7.754	6.812	292.8E6	111.2E6	1008.184	1153.080
37) L8 AR-1262-2	8.377	7.111	333.8E6	63755822	464.158	410.421
38) L8 AR-1262-3	8.704	7.634	213.6E6	24028371	443.266	211.177 #
39) L8 AR-1262-4	8.778	7.697	37871717	102.9E6	105.583	431.696 #
40) L8 AR-1262-5	9.436	8.192	77349567	31161303	300.815	284.249
41) L9 AR-1268-1	8.704	7.634	213.6E6	24028371	261.075	69.961 #

Data Path : Z:\pestpcbsrv\HPCHEM1\ECD\_0\Data\P0082924\  
 Data File : P0106026.D  
 Signal(s) : Signal #1: ECD1A.ch Signal #2: ECD2B.ch  
 Acq On : 29 Aug 2024 16:55  
 Operator : YP/AJ  
 Sample : P3775-02  
 Misc :  
 ALS Vial : 22 Sample Multiplier: 1

Instrument :  
 ECD\_0  
 ClientSampleId :  
 S-865-N-SO-1-1.5-082824

Integration File signal 1: autoint1.e  
 Integration File signal 2: autoint2.e  
 Quant Time: Aug 30 03:54:35 2024  
 Quant Method : Z:\pestpcbsrv\HPCHEM1\ECD\_0\methods\P0082624.M  
 Quant Title : GC EXTRACTABLES  
 QLast Update : Tue Aug 27 06:50:58 2024  
 Response via : Initial Calibration  
 Integrator: ChemStation

Volume Inj. : 2 µl  
 Signal #1 Phase : ZB-MR1 Signal #2 Phase: ZB-MR2  
 Signal #1 Info : 30Mx0.32mmx 0.50µ Signal #2 Info : 30M x 0.32mm x 0.25µm

	Compound	RT#1	RT#2	Resp#1	Resp#2	ng/ml	ng/ml
42)	L9 AR-1268-2	8.778	7.697	37871717	102.9E6	51.693	319.402 #
43)	L9 AR-1268-3	9.011	7.906	2095057	857585	3.406	3.193
44)	L9 AR-1268-4	9.436	8.192	77349567	31161303	285.956	275.123
45)	L9 AR-1268-5	9.852	8.489	18081705	5890187	8.962	6.885

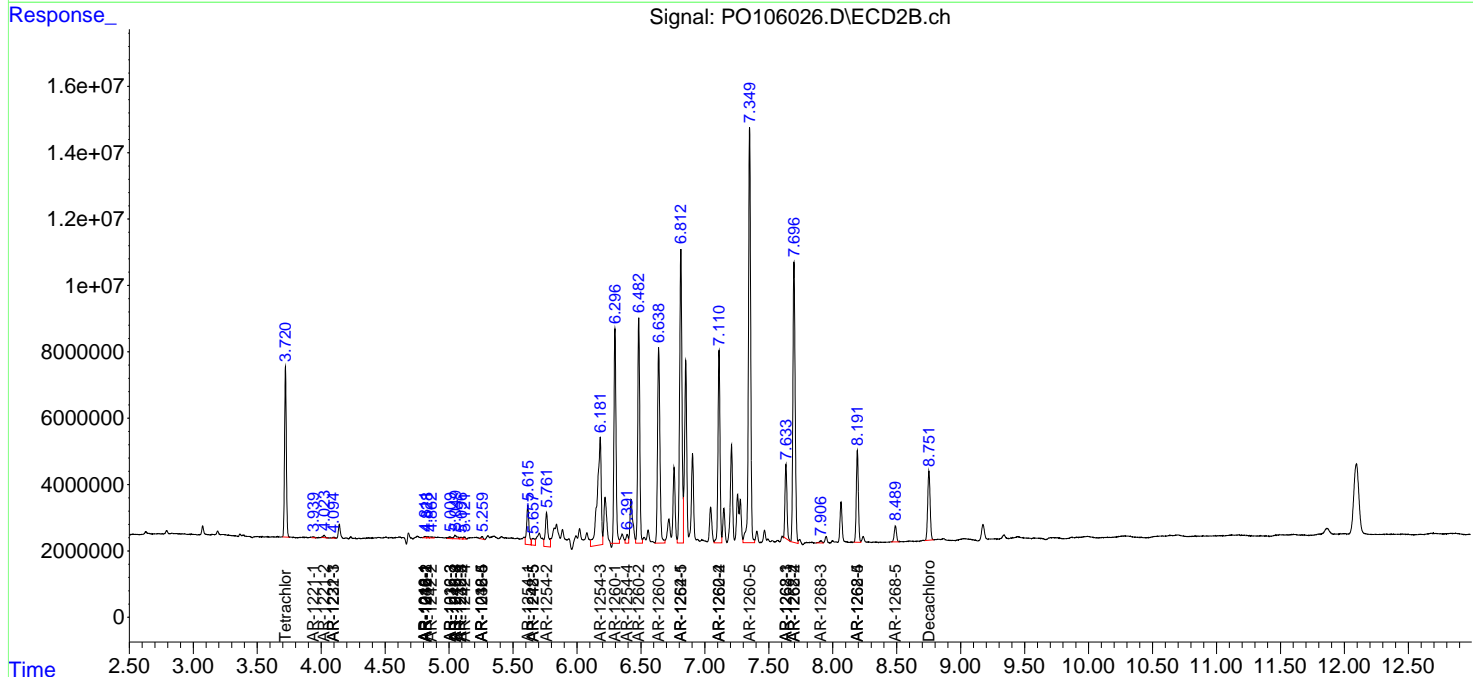
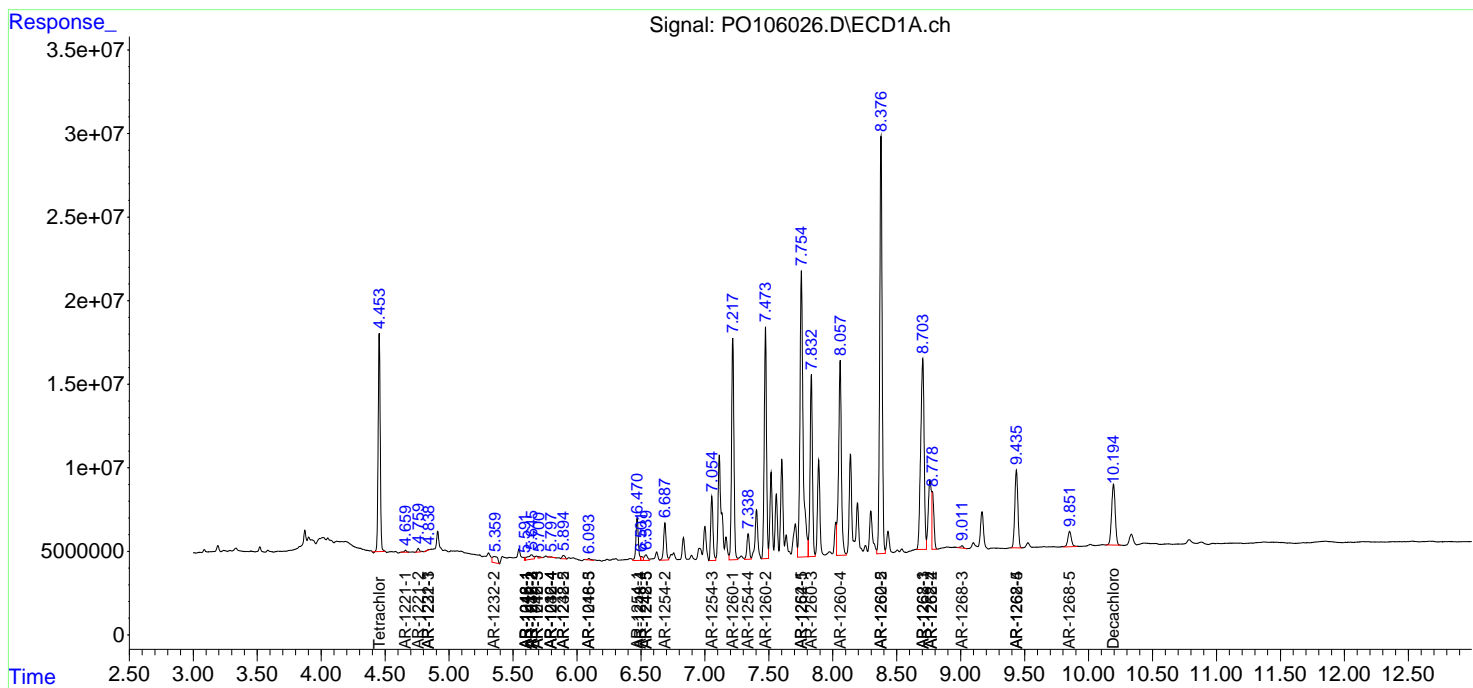
(f)=RT Delta > 1/2 Window (#)=Amounts differ by > 25% (m)=manual int.

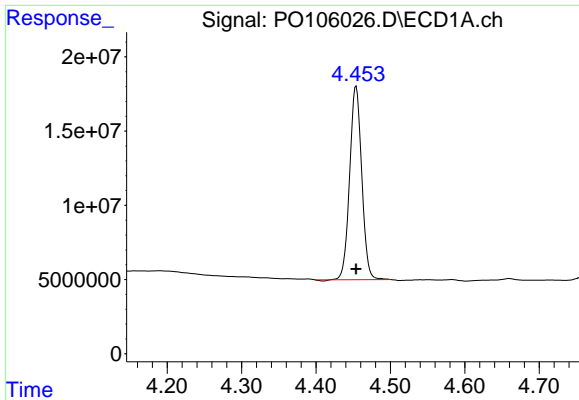
Data Path : Z:\pestpcbsrv\HPCHEM1\ECD\_O\Data\PO082924\  
 Data File : PO106026.D  
 Signal(s) : Signal #1: ECD1A.ch Signal #2: ECD2B.ch  
 Acq On : 29 Aug 2024 16:55  
 Operator : YP/AJ  
 Sample : P3775-02  
 Misc :  
 ALS Vial : 22 Sample Multiplier: 1

Instrument :  
 ECD\_O  
 ClientSampleId :  
 S-865-N-SO-1-1.5-082824

Integration File signal 1: autoint1.e  
 Integration File signal 2: autoint2.e  
 Quant Time: Aug 30 03:54:35 2024  
 Quant Method : Z:\pestpcbsrv\HPCHEM1\ECD\_O\methods\PO082624.M  
 Quant Title : GC EXTRACTABLES  
 QLast Update : Tue Aug 27 06:50:58 2024  
 Response via : Initial Calibration  
 Integrator: ChemStation

Volume Inj. : 2 µl  
 Signal #1 Phase : ZB-MR1 Signal #2 Phase: ZB-MR2  
 Signal #1 Info : 30Mx0.32mmx 0.50µ Signal #2 Info : 30M x 0.32mm x 0.25µm

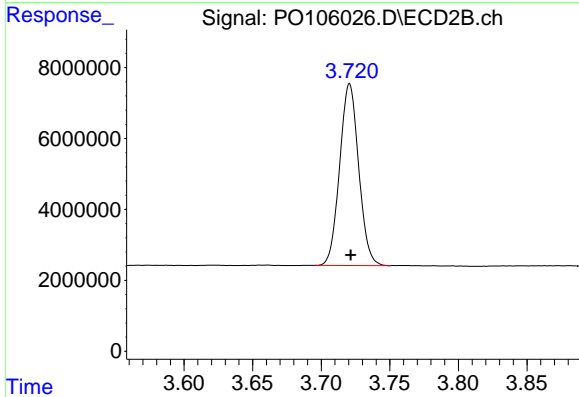




#1 Tetrachloro-m-xylene

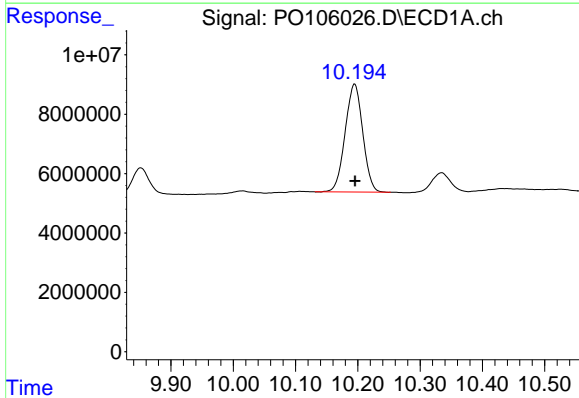
R.T.: 4.454 min  
 Delta R.T.: 0.000 min  
 Response: 146833799  
 Conc: 16.09 ng/ml

Instrument :  
 ECD\_O  
 ClientSampleId :  
 S-865-N-SO-1-1.5-082824



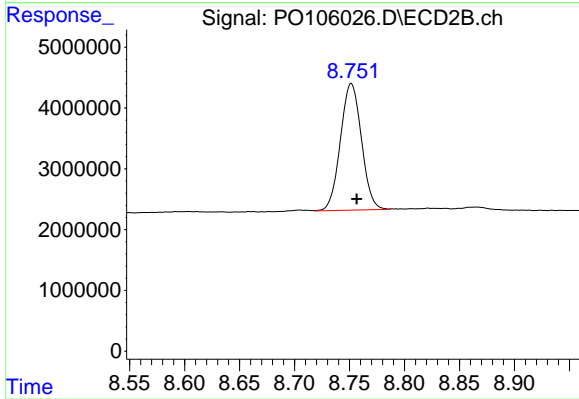
#1 Tetrachloro-m-xylene

R.T.: 3.721 min  
 Delta R.T.: 0.000 min  
 Response: 49505283  
 Conc: 18.32 ng/ml



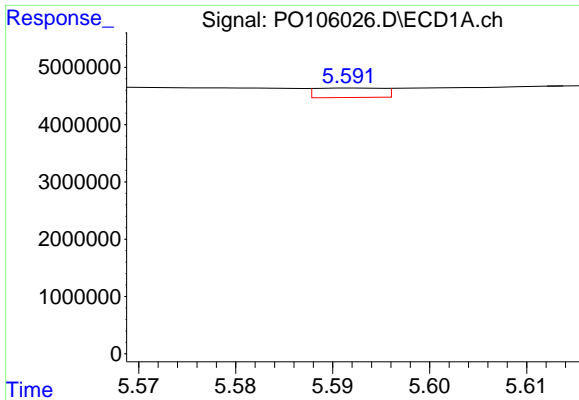
#2 Decachlorobiphenyl

R.T.: 10.195 min  
 Delta R.T.: 0.000 min  
 Response: 71657550  
 Conc: 13.20 ng/ml



#2 Decachlorobiphenyl

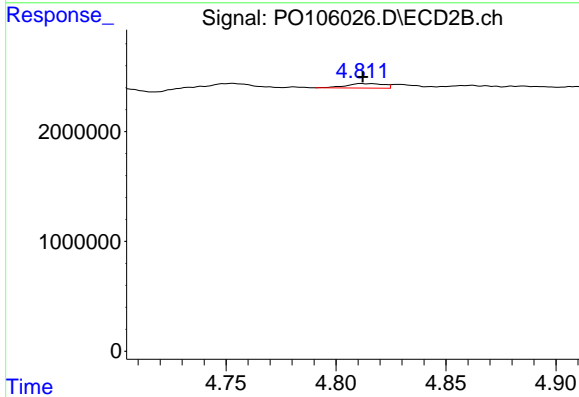
R.T.: 8.752 min  
 Delta R.T.: -0.005 min  
 Response: 27710048  
 Conc: 12.69 ng/ml



#3 AR-1016-1

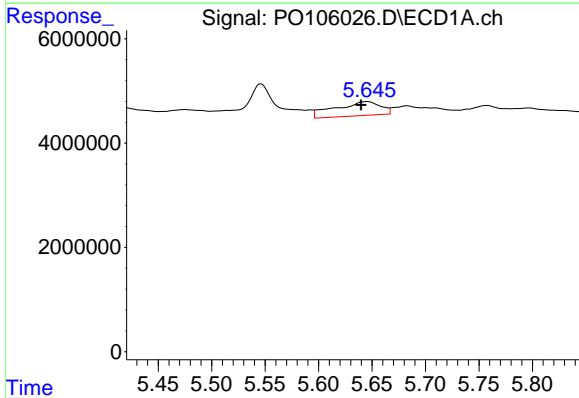
R.T.: 5.592 min  
 Delta R.T.: -0.025 min  
 Response: 795686  
 Conc: 2.52 ng/ml

Instrument :  
 ECD\_O  
 ClientSampleId :  
 S-865-N-SO-1-1.5-082824



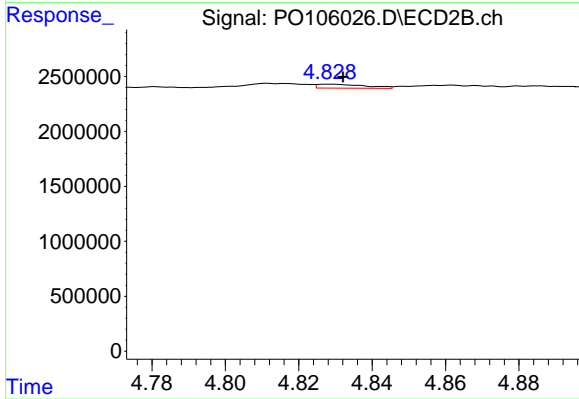
#3 AR-1016-1

R.T.: 4.812 min  
 Delta R.T.: 0.000 min  
 Response: 491851  
 Conc: 5.14 ng/ml



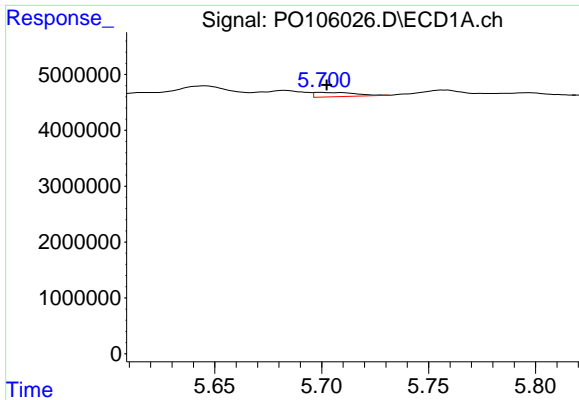
#4 AR-1016-2

R.T.: 5.646 min  
 Delta R.T.: 0.006 min  
 Response: 8014474  
 Conc: 18.23 ng/ml



#4 AR-1016-2

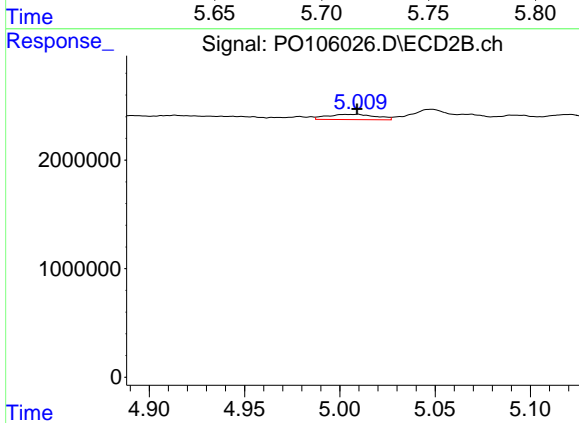
R.T.: 4.828 min  
 Delta R.T.: -0.004 min  
 Response: 325192  
 Conc: 2.56 ng/ml



#5 AR-1016-3

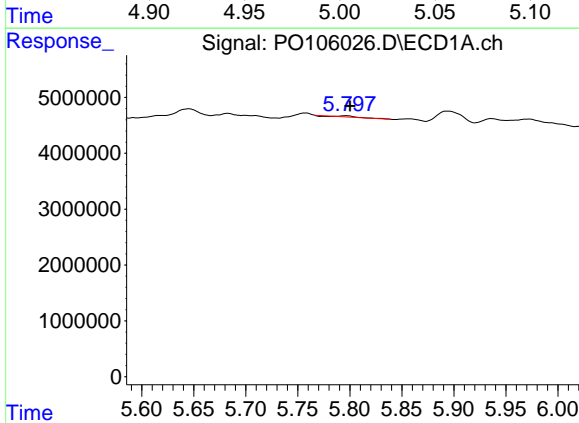
R.T.: 5.700 min  
 Delta R.T.: -0.003 min  
 Response: 1025187  
 Conc: 3.81 ng/ml

Instrument :  
 ECD\_O  
 ClientSampleId :  
 S-865-N-SO-1-1.5-082824



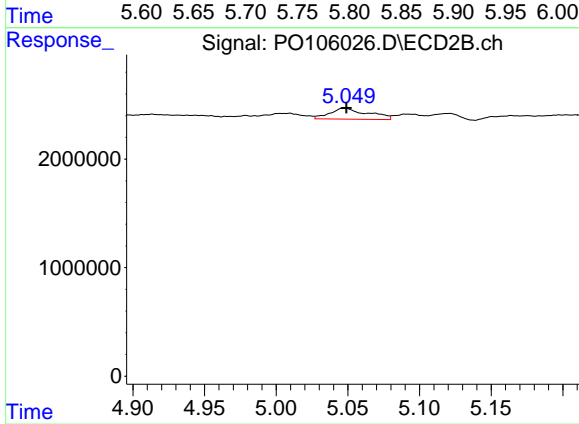
#5 AR-1016-3

R.T.: 5.009 min  
 Delta R.T.: 0.000 min  
 Response: 864187  
 Conc: 12.35 ng/ml



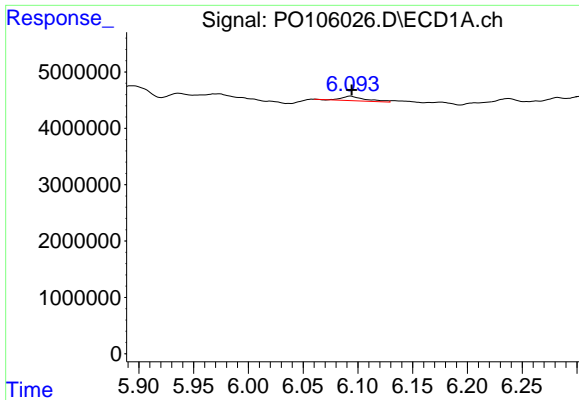
#6 AR-1016-4

R.T.: 5.797 min  
 Delta R.T.: -0.003 min  
 Response: 151192  
 Conc: 0.69 ng/ml



#6 AR-1016-4

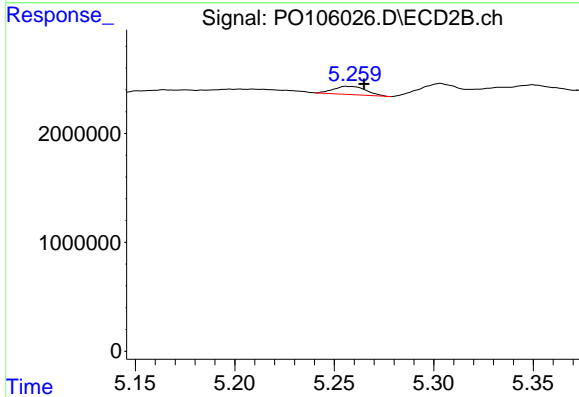
R.T.: 5.048 min  
 Delta R.T.: -0.001 min  
 Response: 1869747  
 Conc: 34.77 ng/ml



#7 AR-1016-5

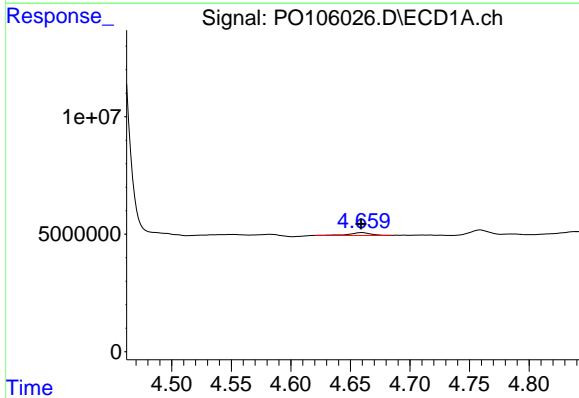
R.T.: 6.093 min  
 Delta R.T.: -0.001 min  
 Response: 1195239  
 Conc: 5.62 ng/ml

Instrument :  
 ECD\_O  
 ClientSampleId :  
 S-865-N-SO-1-1.5-082824



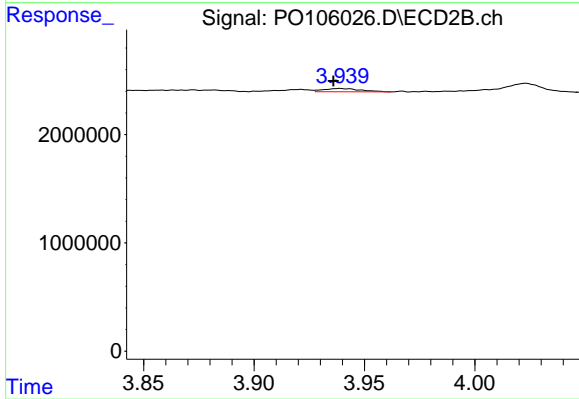
#7 AR-1016-5

R.T.: 5.257 min  
 Delta R.T.: -0.008 min  
 Response: 855038  
 Conc: 12.43 ng/ml



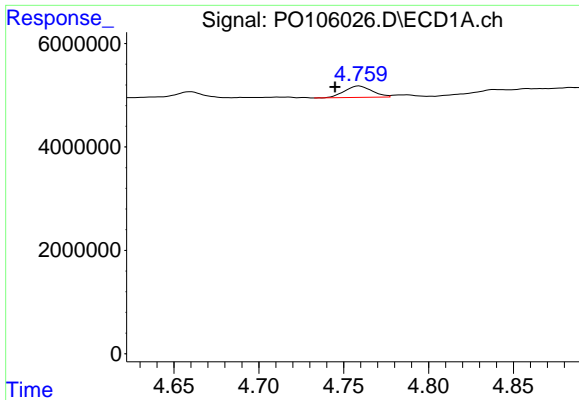
#8 AR-1221-1

R.T.: 4.660 min  
 Delta R.T.: 0.000 min  
 Response: 1506257  
 Conc: 13.68 ng/ml



#8 AR-1221-1

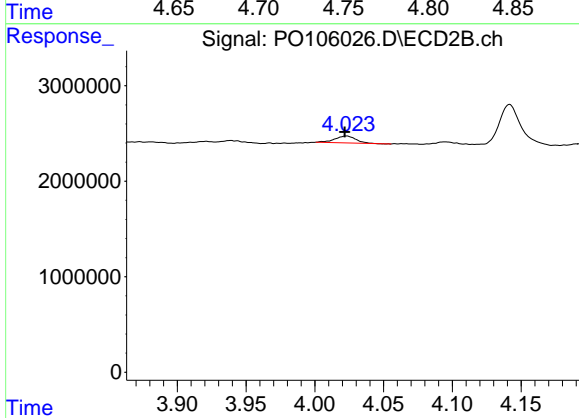
R.T.: 3.939 min  
 Delta R.T.: 0.003 min  
 Response: 355618  
 Conc: 11.65 ng/ml



#9 AR-1221-2

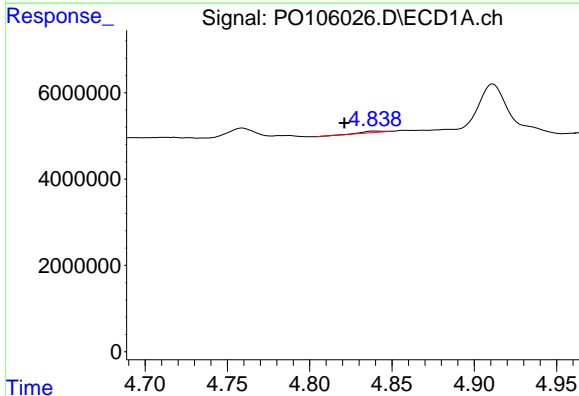
R.T.: 4.759 min  
 Delta R.T.: 0.014 min  
 Response: 2474450  
 Conc: 29.44 ng/ml

Instrument :  
 ECD\_O  
 ClientSampleId :  
 S-865-N-SO-1-1.5-082824



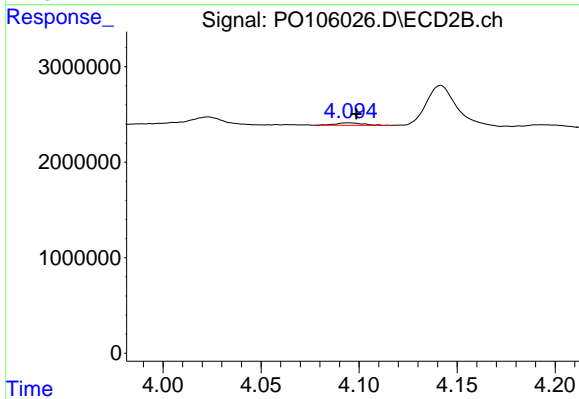
#9 AR-1221-2

R.T.: 4.023 min  
 Delta R.T.: 0.001 min  
 Response: 784884  
 Conc: 34.34 ng/ml



#10 AR-1221-3

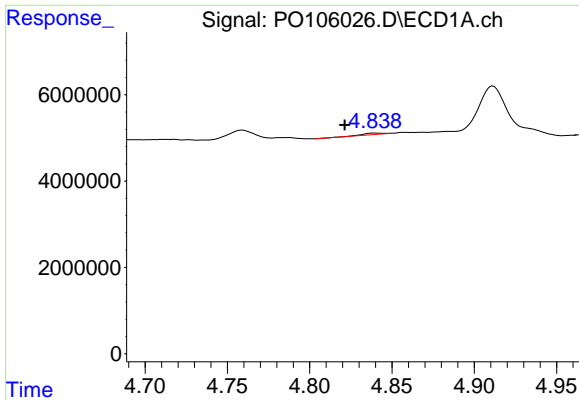
R.T.: 4.839 min  
 Delta R.T.: 0.018 min  
 Response: 266247  
 Conc: 1.10 ng/ml



#10 AR-1221-3

R.T.: 4.095 min  
 Delta R.T.: -0.004 min  
 Response: 251426  
 Conc: 3.52 ng/ml

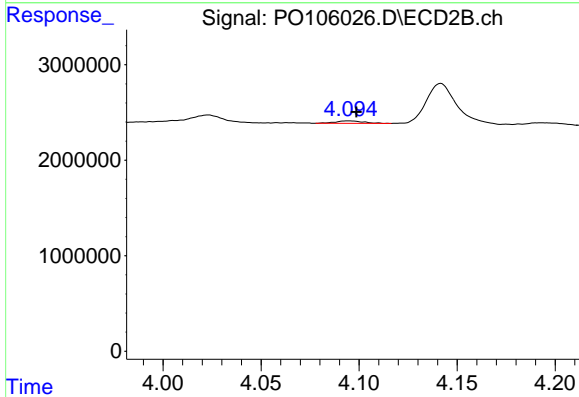




#11 AR-1232-1

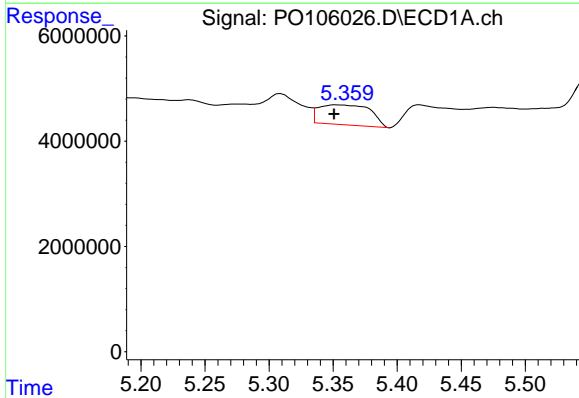
R.T.: 4.839 min  
 Delta R.T.: 0.018 min  
 Response: 266247  
 Conc: 1.31 ng/ml

Instrument :  
 ECD\_O  
 ClientSampleId :  
 S-865-N-SO-1-1.5-082824



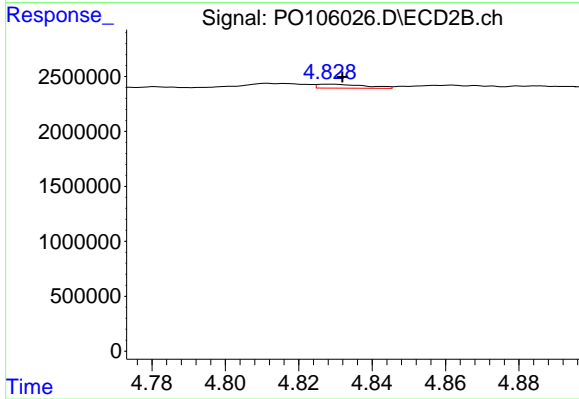
#11 AR-1232-1

R.T.: 4.095 min  
 Delta R.T.: -0.004 min  
 Response: 251426  
 Conc: 4.28 ng/ml



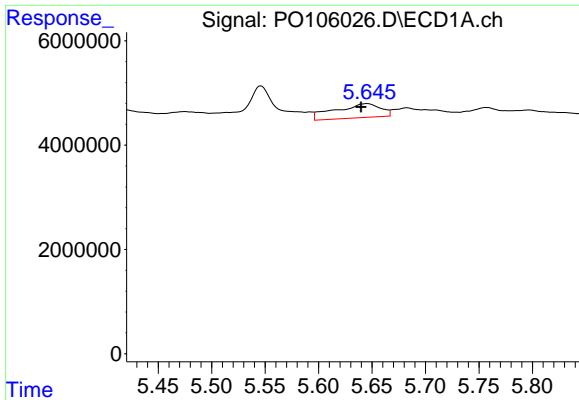
#12 AR-1232-2

R.T.: 5.352 min  
 Delta R.T.: 0.001 min  
 Response: 10581126  
 Conc: 97.39 ng/ml



#12 AR-1232-2

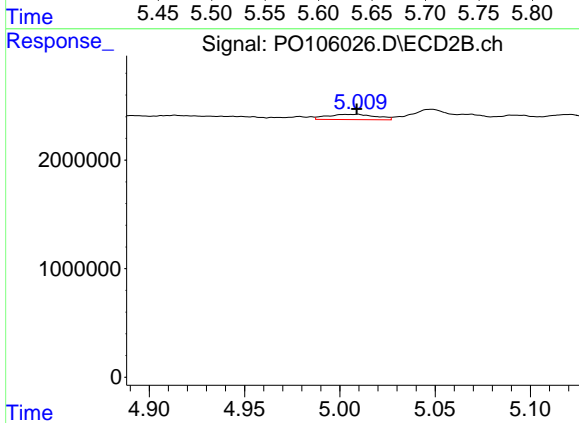
R.T.: 4.828 min  
 Delta R.T.: -0.003 min  
 Response: 325192  
 Conc: 5.76 ng/ml



#13 AR-1232-3

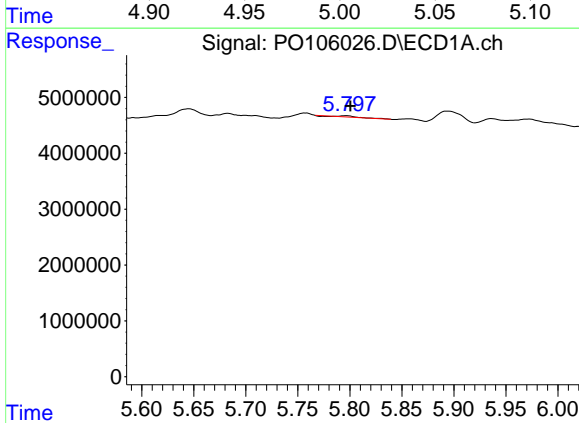
R.T.: 5.646 min  
 Delta R.T.: 0.006 min  
 Response: 8014474  
 Conc: 40.63 ng/ml

Instrument :  
 ECD\_O  
 ClientSampleId :  
 S-865-N-SO-1-1.5-082824



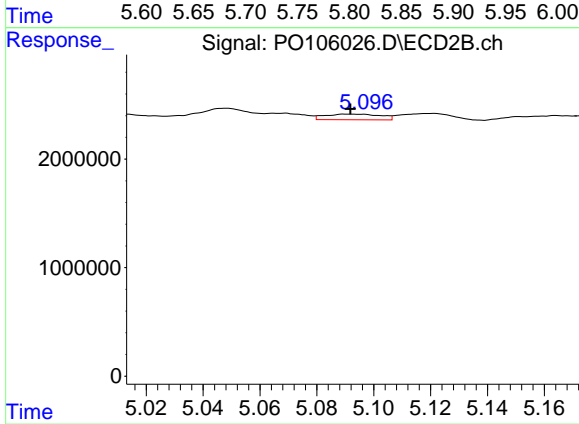
#13 AR-1232-3

R.T.: 5.009 min  
 Delta R.T.: 0.000 min  
 Response: 864187  
 Conc: 27.97 ng/ml



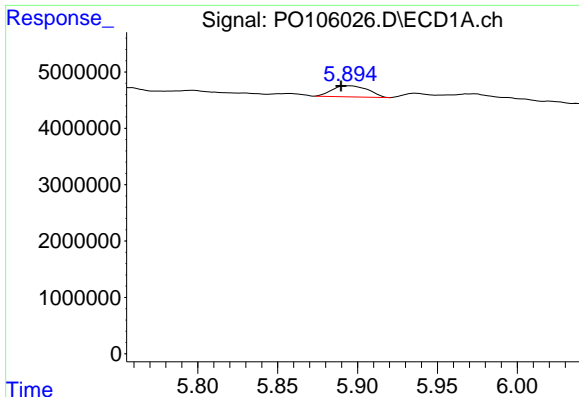
#14 AR-1232-4

R.T.: 5.797 min  
 Delta R.T.: -0.004 min  
 Response: 151192  
 Conc: 1.54 ng/ml



#14 AR-1232-4

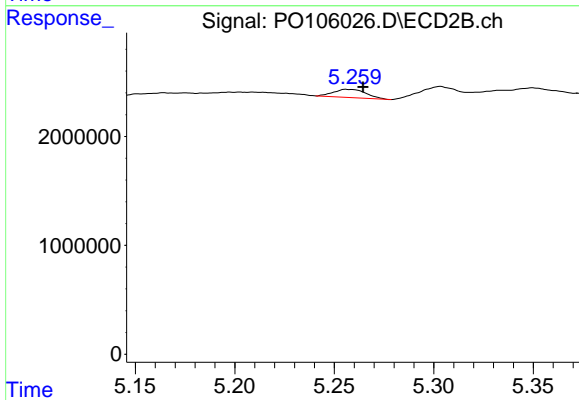
R.T.: 5.091 min  
 Delta R.T.: 0.000 min  
 Response: 702341  
 Conc: 25.99 ng/ml



#15 AR-1232-5

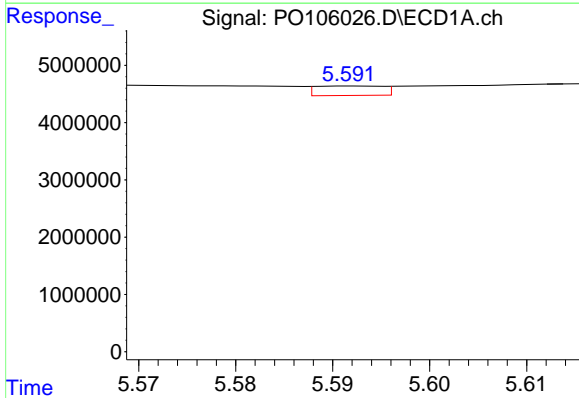
R.T.: 5.894 min  
 Delta R.T.: 0.004 min  
 Response: 3061199  
 Conc: 40.21 ng/ml

Instrument :  
 ECD\_O  
 ClientSampleId :  
 S-865-N-SO-1-1.5-082824



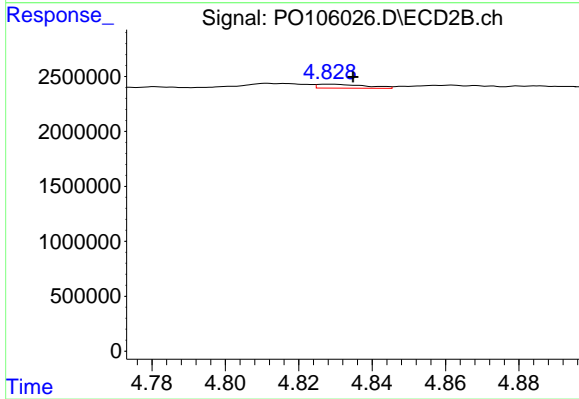
#15 AR-1232-5

R.T.: 5.257 min  
 Delta R.T.: -0.008 min  
 Response: 855038  
 Conc: 28.92 ng/ml



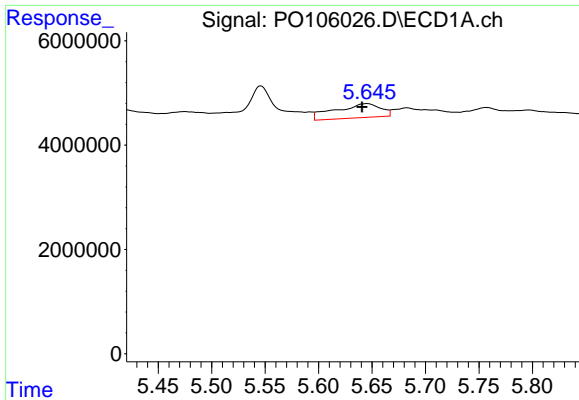
#16 AR-1242-1

R.T.: 5.592 min  
 Delta R.T.: -0.025 min  
 Response: 795686  
 Conc: 3.29 ng/ml



#16 AR-1242-1

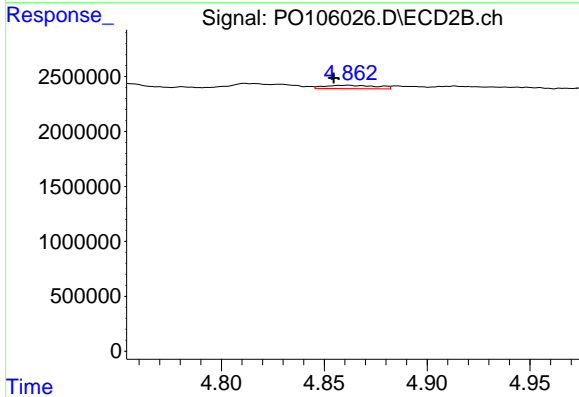
R.T.: 4.828 min  
 Delta R.T.: -0.006 min  
 Response: 325192  
 Conc: 4.57 ng/ml



#17 AR-1242-2

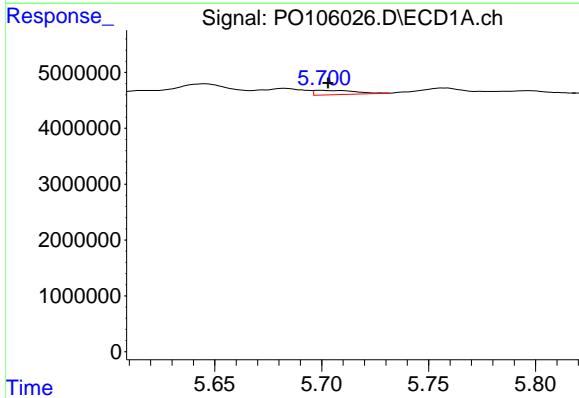
R.T.: 5.646 min  
 Delta R.T.: 0.005 min  
 Response: 8014474  
 Conc: 24.13 ng/ml

Instrument :  
 ECD\_O  
 ClientSampleId :  
 S-865-N-SO-1-1.5-082824



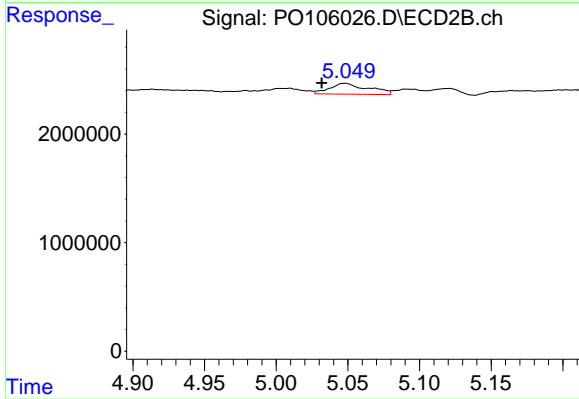
#17 AR-1242-2

R.T.: 4.862 min  
 Delta R.T.: 0.007 min  
 Response: 534433  
 Conc: 5.70 ng/ml



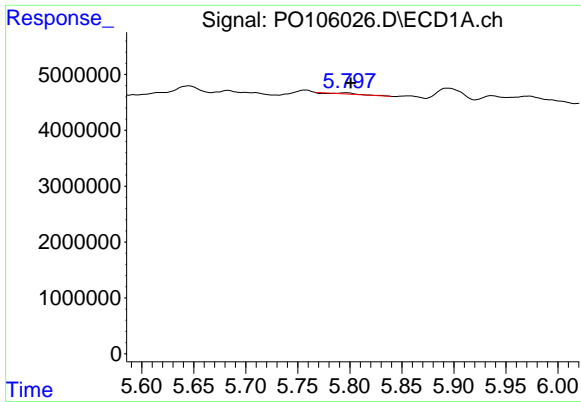
#18 AR-1242-3

R.T.: 5.700 min  
 Delta R.T.: -0.003 min  
 Response: 1025187  
 Conc: 4.99 ng/ml



#18 AR-1242-3

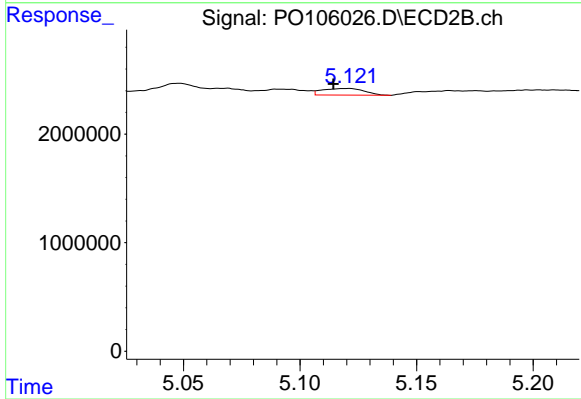
R.T.: 5.048 min  
 Delta R.T.: 0.016 min  
 Response: 1869747  
 Conc: 36.66 ng/ml



#19 AR-1242-4

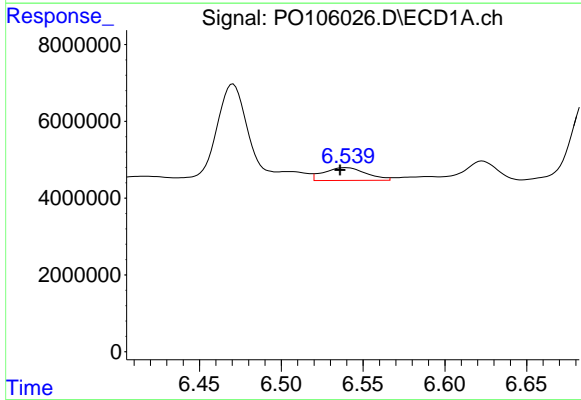
R.T.: 5.797 min  
 Delta R.T.: -0.004 min  
 Response: 151192  
 Conc: 0.90 ng/ml

Instrument :  
 ECD\_O  
 ClientSampleId :  
 S-865-N-SO-1-1.5-082824



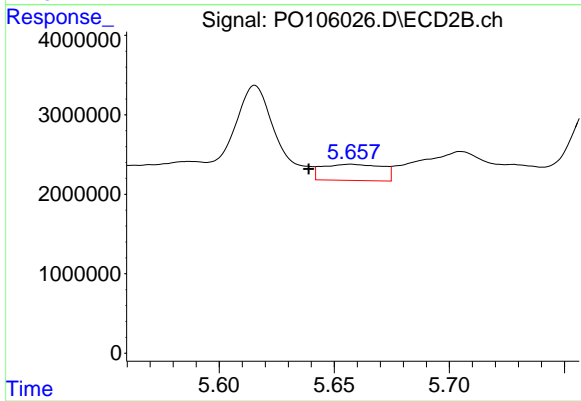
#19 AR-1242-4

R.T.: 5.120 min  
 Delta R.T.: 0.006 min  
 Response: 767779  
 Conc: 14.98 ng/ml



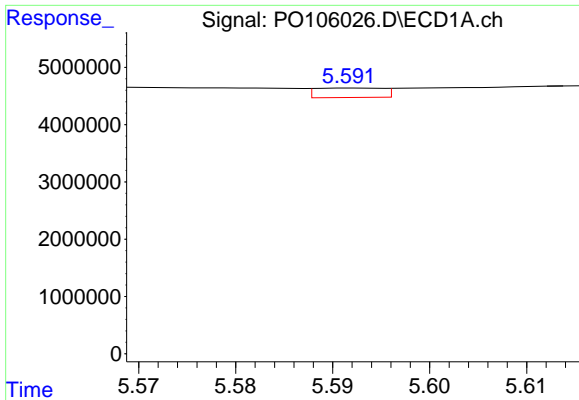
#20 AR-1242-5

R.T.: 6.540 min  
 Delta R.T.: 0.004 min  
 Response: 5994744  
 Conc: 35.19 ng/ml



#20 AR-1242-5

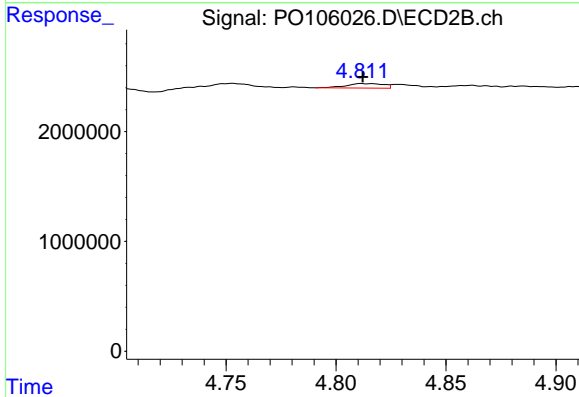
R.T.: 5.657 min  
 Delta R.T.: 0.018 min  
 Response: 3698490  
 Conc: 57.22 ng/ml



#21 AR-1248-1

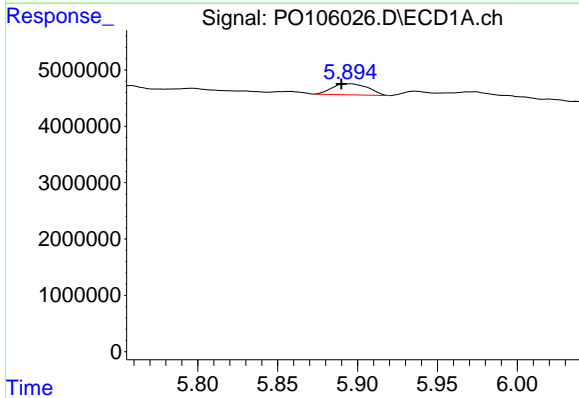
R.T.: 5.592 min  
 Delta R.T.: -0.025 min  
 Response: 795686  
 Conc: 4.23 ng/ml

Instrument :  
 ECD\_O  
 ClientSampleId :  
 S-865-N-SO-1-1.5-082824



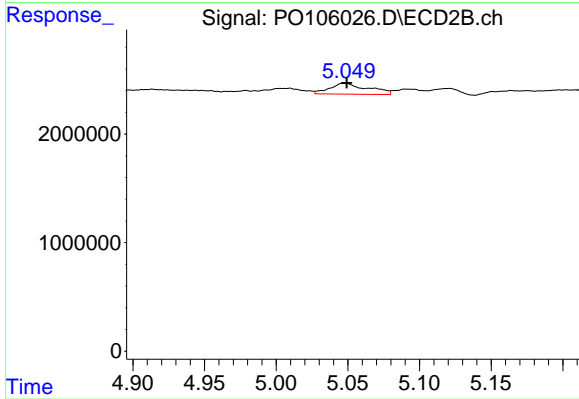
#21 AR-1248-1

R.T.: 4.812 min  
 Delta R.T.: 0.000 min  
 Response: 491851  
 Conc: 8.78 ng/ml



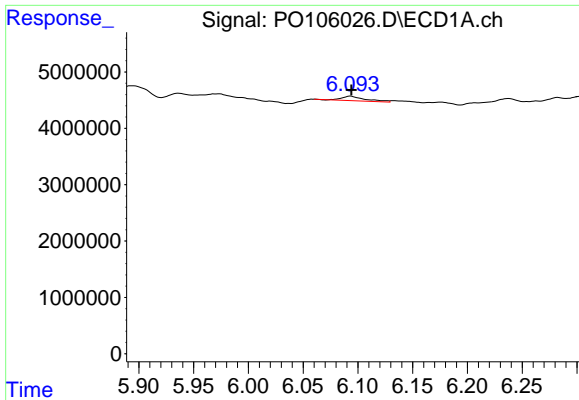
#22 AR-1248-2

R.T.: 5.894 min  
 Delta R.T.: 0.004 min  
 Response: 3061199  
 Conc: 11.85 ng/ml



#22 AR-1248-2

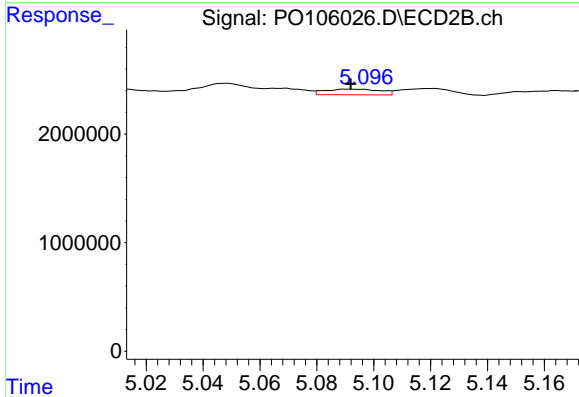
R.T.: 5.048 min  
 Delta R.T.: -0.001 min  
 Response: 1869747  
 Conc: 25.12 ng/ml



#23 AR-1248-3

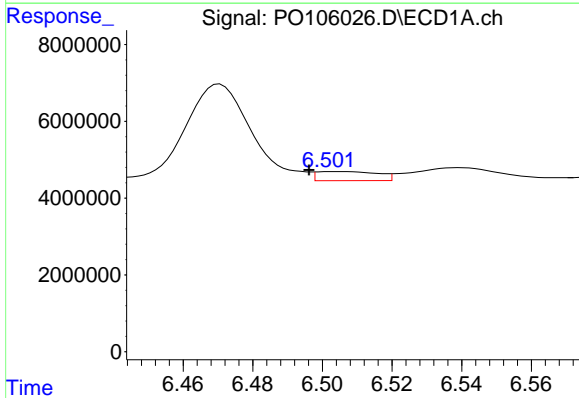
R.T.: 6.093 min  
 Delta R.T.: 0.000 min  
 Response: 1195239  
 Conc: 4.18 ng/ml

Instrument :  
 ECD\_O  
 ClientSampleId :  
 S-865-N-SO-1-1.5-082824



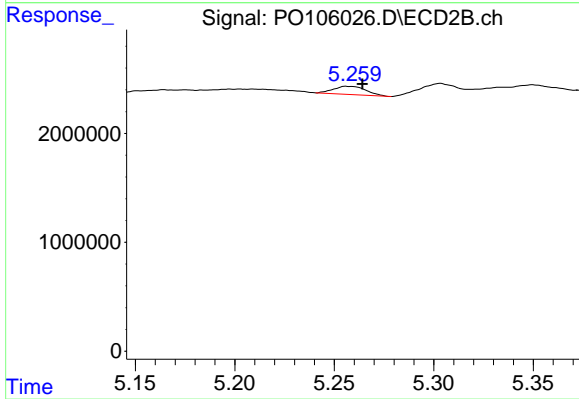
#23 AR-1248-3

R.T.: 5.091 min  
 Delta R.T.: -0.001 min  
 Response: 702341  
 Conc: 8.94 ng/ml



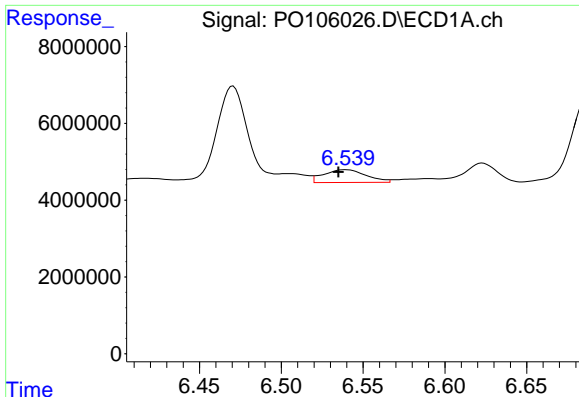
#24 AR-1248-4

R.T.: 6.503 min  
 Delta R.T.: 0.007 min  
 Response: 2871517  
 Conc: 9.11 ng/ml



#24 AR-1248-4

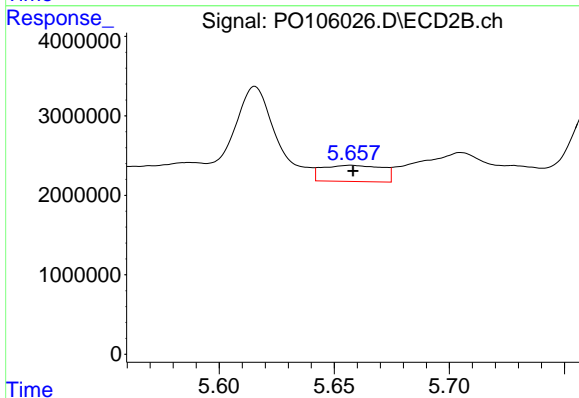
R.T.: 5.257 min  
 Delta R.T.: -0.008 min  
 Response: 855038  
 Conc: 9.18 ng/ml



#25 AR-1248-5

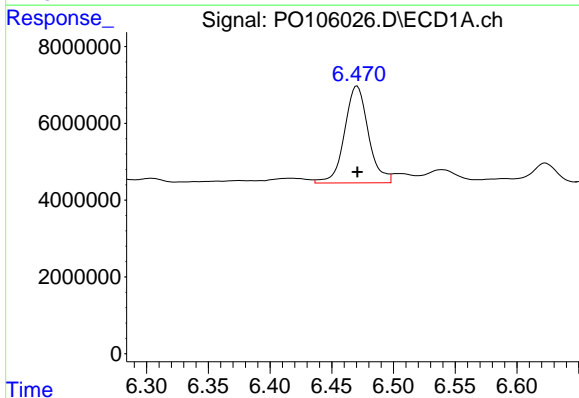
R.T.: 6.540 min  
Delta R.T.: 0.005 min  
Response: 5994744  
Conc: 19.75 ng/ml

Instrument :  
ECD\_O  
ClientSampleId :  
S-865-N-SO-1-1.5-082824



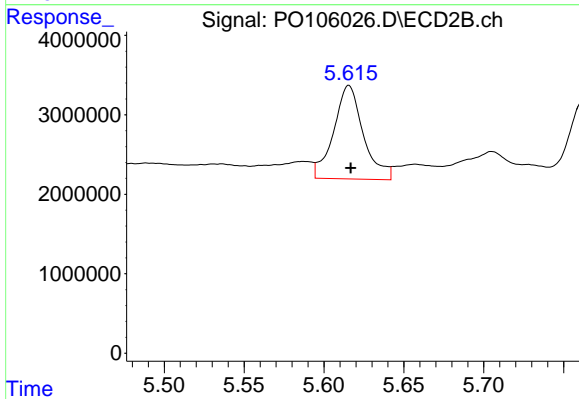
#25 AR-1248-5

R.T.: 5.657 min  
Delta R.T.: 0.000 min  
Response: 3698490  
Conc: 40.36 ng/ml



#26 AR-1254-1

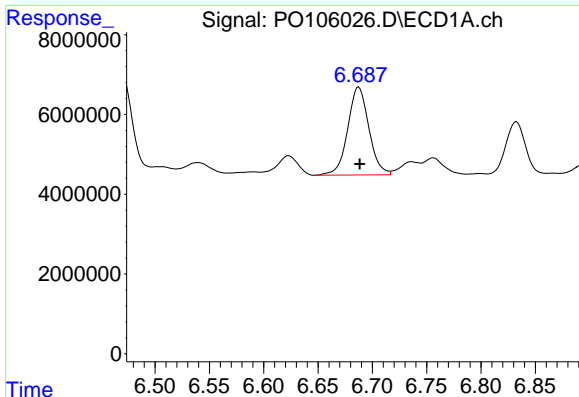
R.T.: 6.471 min  
Delta R.T.: 0.000 min  
Response: 33810896  
Conc: 109.52 ng/ml



#26 AR-1254-1

R.T.: 5.616 min  
Delta R.T.: -0.001 min  
Response: 15271768  
Conc: 113.19 ng/ml

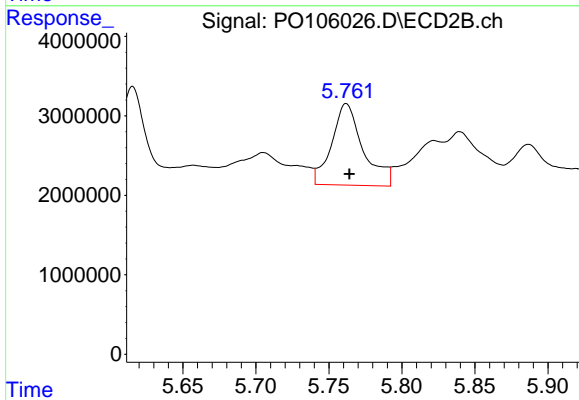




#27 AR-1254-2

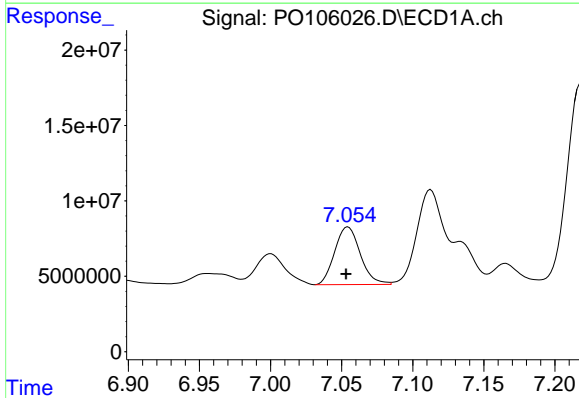
R.T.: 6.688 min  
 Delta R.T.: 0.000 min  
 Response: 29884857  
 Conc: 64.86 ng/ml

Instrument :  
 ECD\_O  
 ClientSampleId :  
 S-865-N-SO-1-1.5-082824



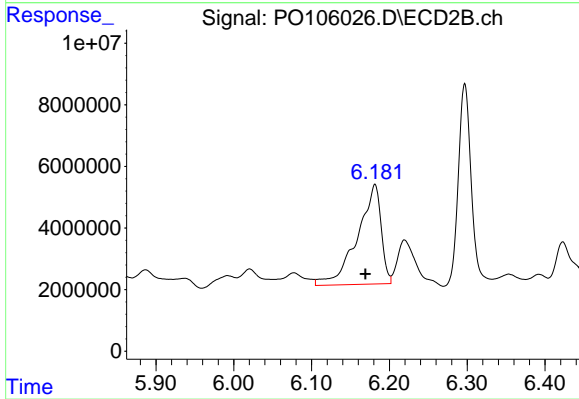
#27 AR-1254-2

R.T.: 5.762 min  
 Delta R.T.: -0.002 min  
 Response: 15358704  
 Conc: 126.54 ng/ml



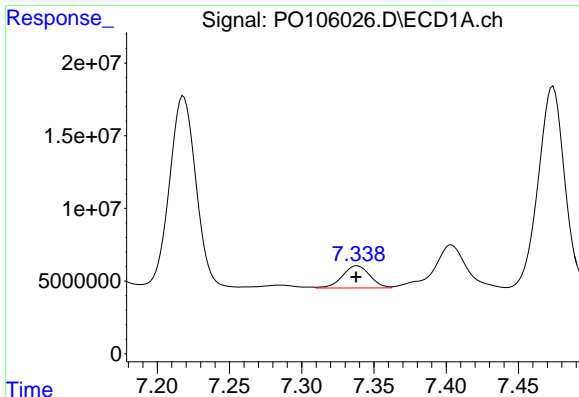
#28 AR-1254-3

R.T.: 7.054 min  
 Delta R.T.: 0.001 min  
 Response: 47948984  
 Conc: 101.50 ng/ml



#28 AR-1254-3

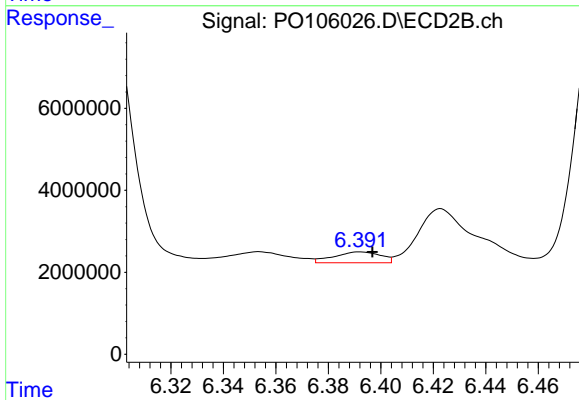
R.T.: 6.182 min  
 Delta R.T.: 0.012 min  
 Response: 68564691  
 Conc: 355.70 ng/ml



#29 AR-1254-4

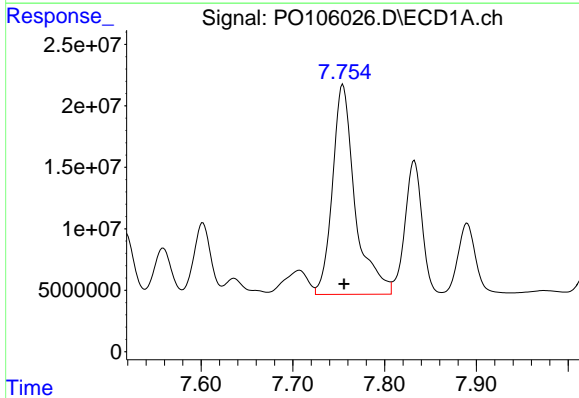
R.T.: 7.338 min  
 Delta R.T.: 0.000 min  
 Response: 20231339  
 Conc: 58.08 ng/ml

Instrument :  
 ECD\_O  
 ClientSampleId :  
 S-865-N-SO-1-1.5-082824



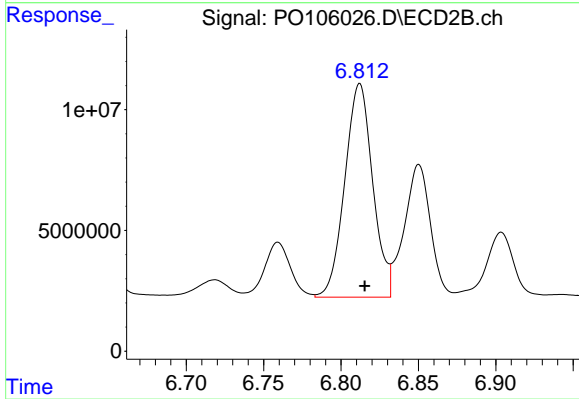
#29 AR-1254-4

R.T.: 6.392 min  
 Delta R.T.: -0.005 min  
 Response: 3262757  
 Conc: 26.90 ng/ml



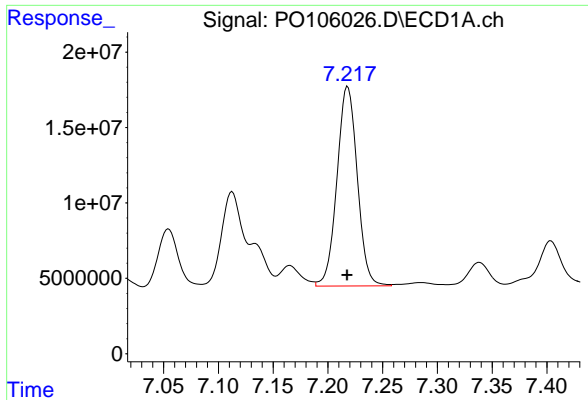
#30 AR-1254-5

R.T.: 7.754 min  
 Delta R.T.: -0.001 min  
 Response: 292810348  
 Conc: 801.88 ng/ml



#30 AR-1254-5

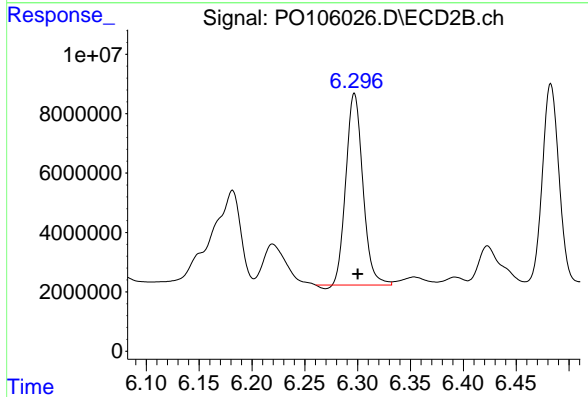
R.T.: 6.812 min  
 Delta R.T.: -0.003 min  
 Response: 111158698  
 Conc: 628.70 ng/ml



#31 AR-1260-1

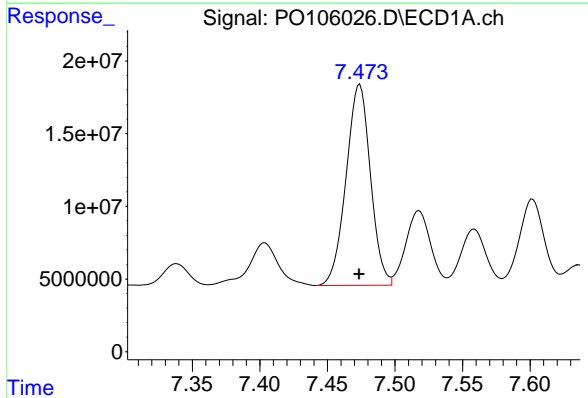
R.T.: 7.218 min  
 Delta R.T.: 0.000 min  
 Response: 170891055  
 Conc: 476.21 ng/ml

Instrument :  
 ECD\_O  
 ClientSampleId :  
 S-865-N-SO-1-1.5-082824



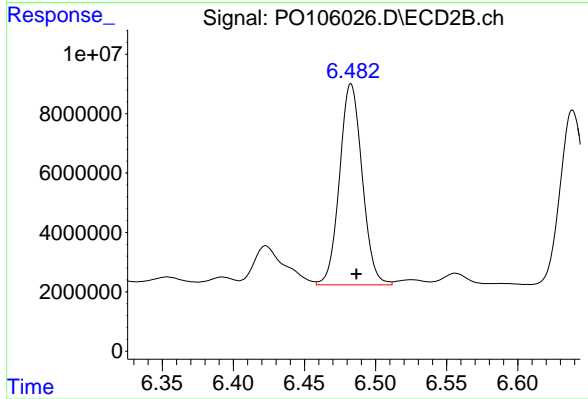
#31 AR-1260-1

R.T.: 6.297 min  
 Delta R.T.: -0.003 min  
 Response: 71626317  
 Conc: 543.69 ng/ml



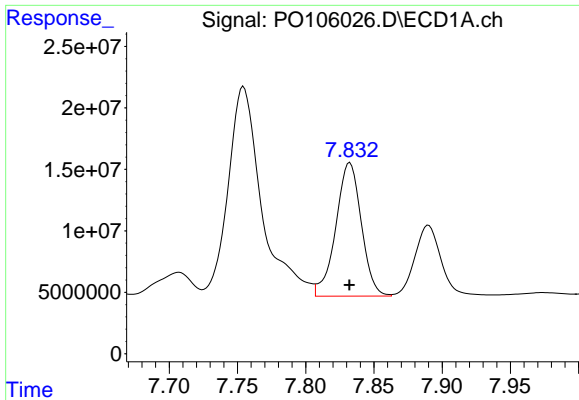
#32 AR-1260-2

R.T.: 7.474 min  
 Delta R.T.: 0.000 min  
 Response: 173458639  
 Conc: 412.93 ng/ml



#32 AR-1260-2

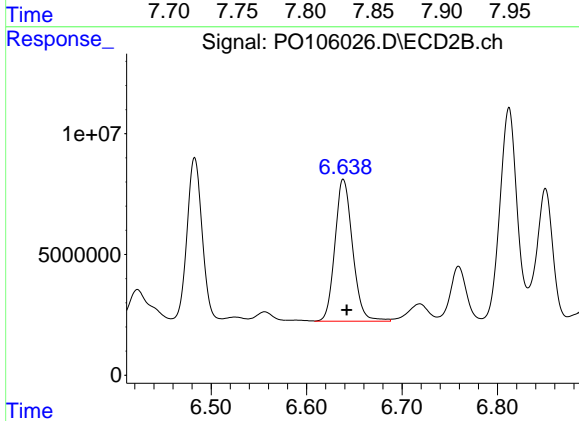
R.T.: 6.483 min  
 Delta R.T.: -0.004 min  
 Response: 75034140  
 Conc: 457.22 ng/ml



#33 AR-1260-3

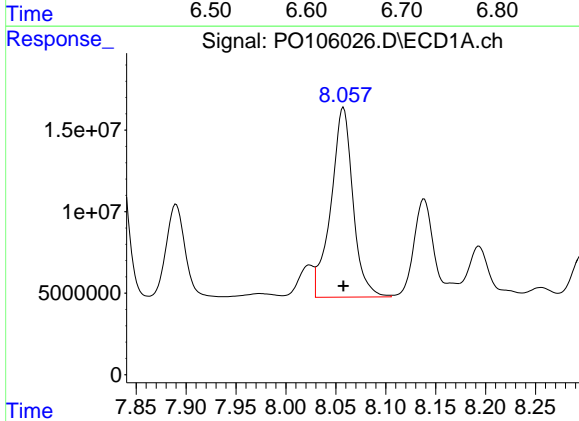
R.T.: 7.832 min  
 Delta R.T.: 0.000 min  
 Response: 141569180  
 Conc: 529.33 ng/ml

Instrument :  
 ECD\_O  
 ClientSampleId :  
 S-865-N-SO-1-1.5-082824



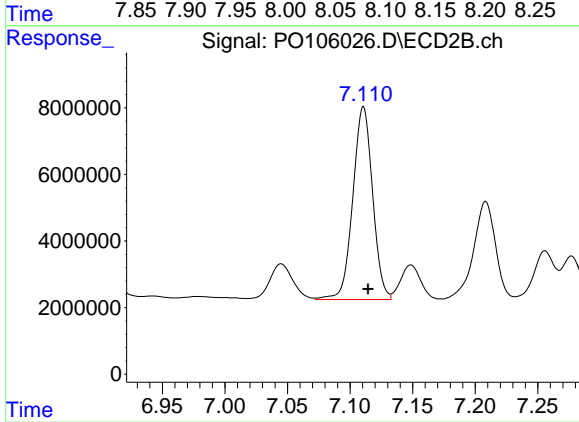
#33 AR-1260-3

R.T.: 6.639 min  
 Delta R.T.: -0.004 min  
 Response: 75715092  
 Conc: 448.64 ng/ml



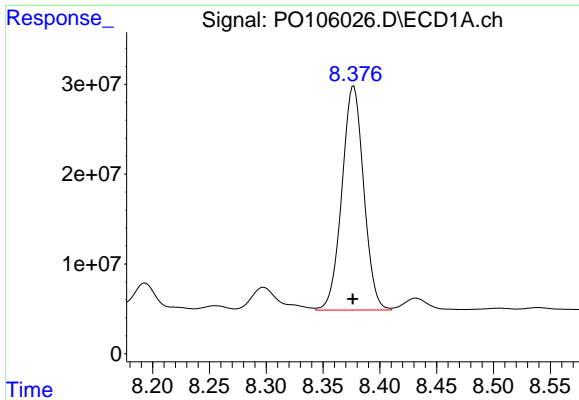
#34 AR-1260-4

R.T.: 8.058 min  
 Delta R.T.: 0.000 min  
 Response: 178507593  
 Conc: 575.80 ng/ml



#34 AR-1260-4

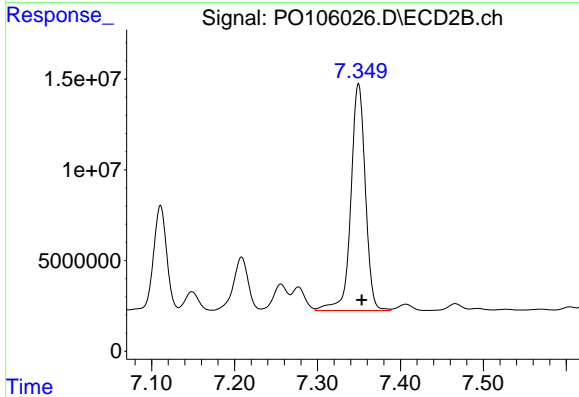
R.T.: 7.111 min  
 Delta R.T.: -0.004 min  
 Response: 63755822  
 Conc: 575.30 ng/ml



#35 AR-1260-5

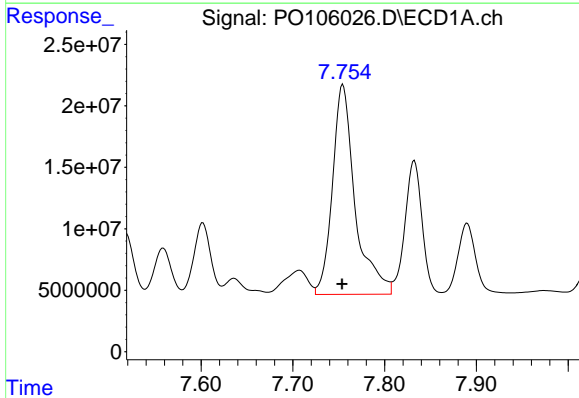
R.T.: 8.377 min  
 Delta R.T.: 0.000 min  
 Response: 333758508  
 Conc: 599.93 ng/ml

Instrument :  
 ECD\_O  
 ClientSampleId :  
 S-865-N-SO-1-1.5-082824



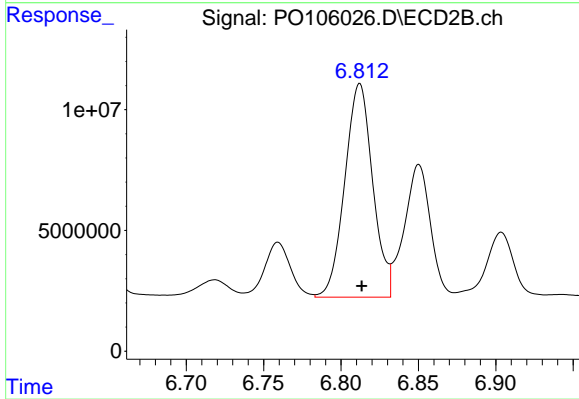
#35 AR-1260-5

R.T.: 7.349 min  
 Delta R.T.: -0.004 min  
 Response: 151327021  
 Conc: 557.69 ng/ml



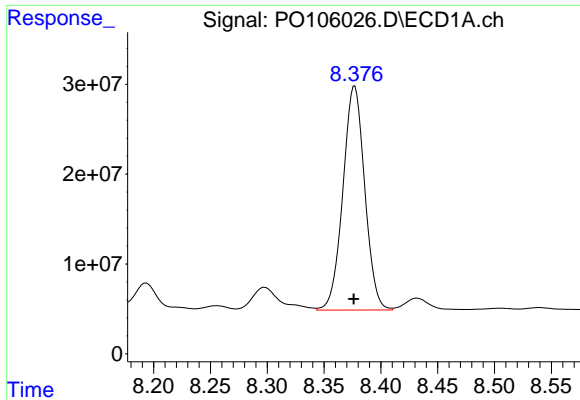
#36 AR-1262-1

R.T.: 7.754 min  
 Delta R.T.: 0.000 min  
 Response: 292810348  
 Conc: 1008.18 ng/ml



#36 AR-1262-1

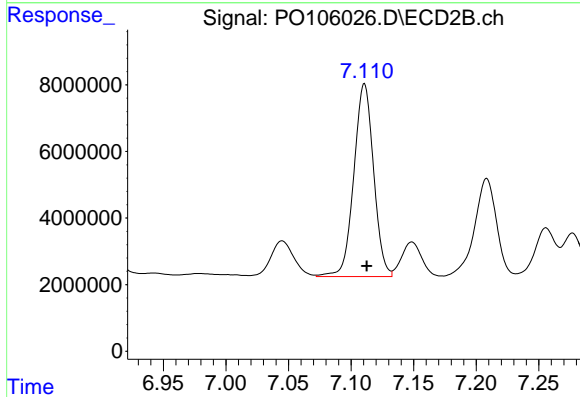
R.T.: 6.812 min  
 Delta R.T.: -0.001 min  
 Response: 111158698  
 Conc: 1153.08 ng/ml



#37 AR-1262-2

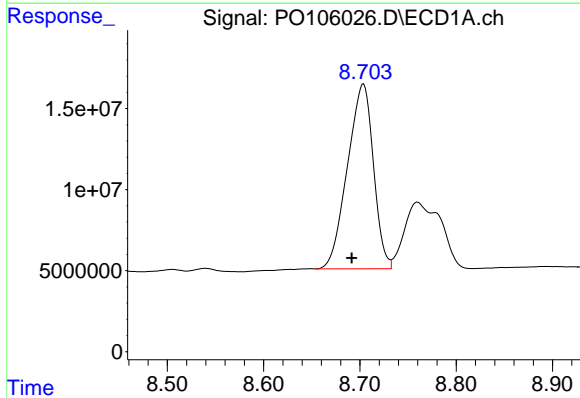
R.T.: 8.377 min  
 Delta R.T.: 0.000 min  
 Response: 333758508  
 Conc: 464.16 ng/ml

Instrument :  
 ECD\_O  
 ClientSampleId :  
 S-865-N-SO-1-1.5-082824



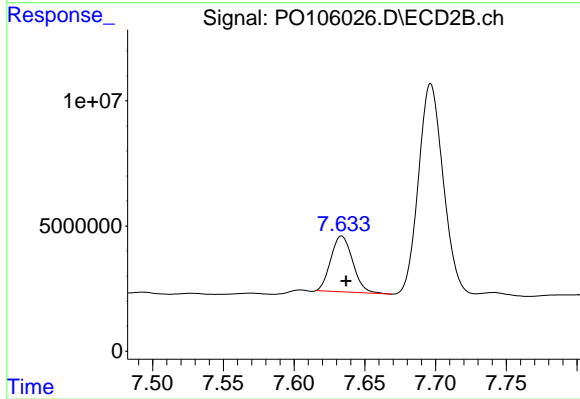
#37 AR-1262-2

R.T.: 7.111 min  
 Delta R.T.: -0.002 min  
 Response: 63755822  
 Conc: 410.42 ng/ml



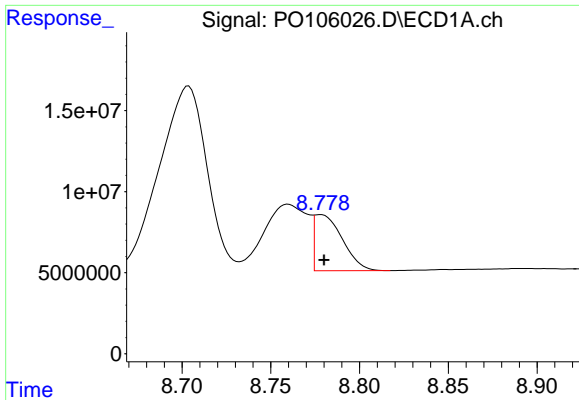
#38 AR-1262-3

R.T.: 8.704 min  
 Delta R.T.: 0.012 min  
 Response: 213615651  
 Conc: 443.27 ng/ml



#38 AR-1262-3

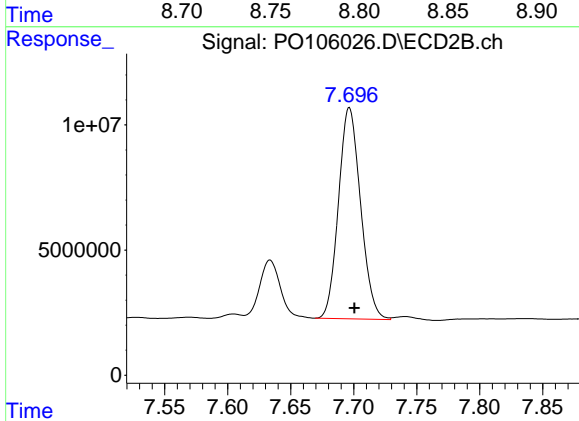
R.T.: 7.634 min  
 Delta R.T.: -0.003 min  
 Response: 24028371  
 Conc: 211.18 ng/ml



#39 AR-1262-4

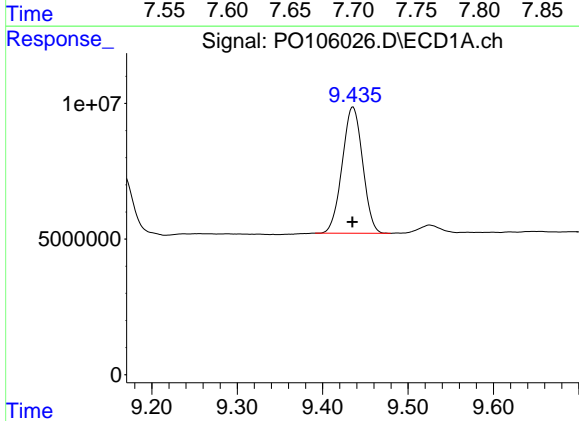
R.T.: 8.778 min  
 Delta R.T.: -0.002 min  
 Response: 37871717  
 Conc: 105.58 ng/ml

Instrument :  
 ECD\_O  
 ClientSampleId :  
 S-865-N-SO-1-1.5-082824



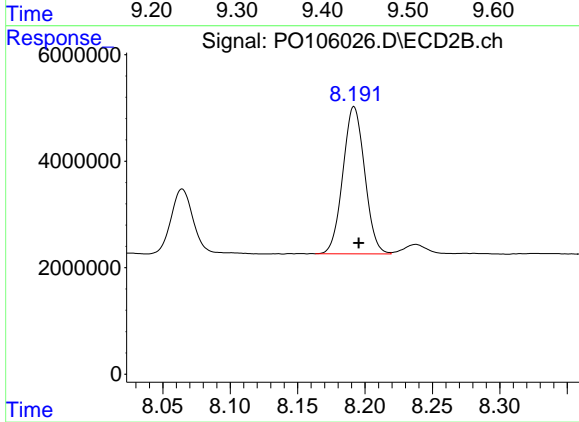
#39 AR-1262-4

R.T.: 7.697 min  
 Delta R.T.: -0.004 min  
 Response: 102868004  
 Conc: 431.70 ng/ml



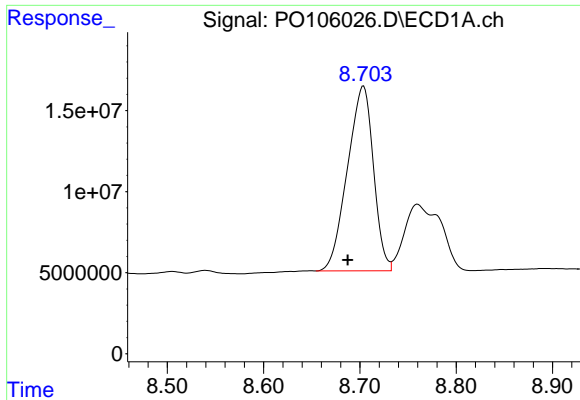
#40 AR-1262-5

R.T.: 9.436 min  
 Delta R.T.: 0.000 min  
 Response: 77349567  
 Conc: 300.81 ng/ml



#40 AR-1262-5

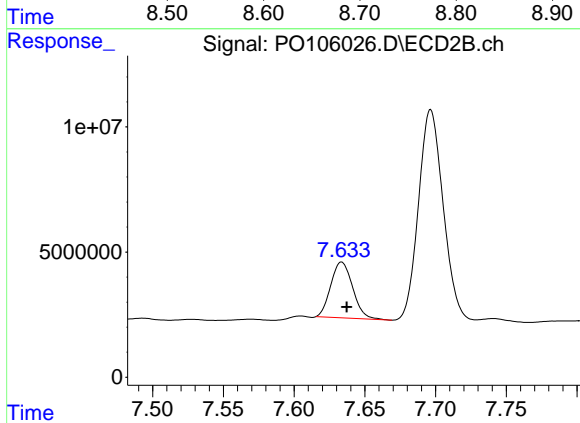
R.T.: 8.192 min  
 Delta R.T.: -0.004 min  
 Response: 31161303  
 Conc: 284.25 ng/ml



#41 AR-1268-1

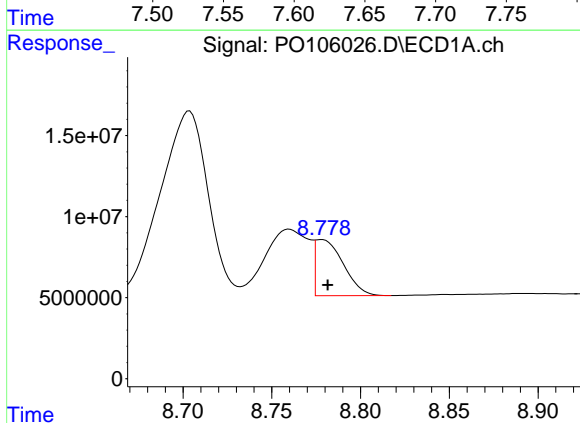
R.T.: 8.704 min  
 Delta R.T.: 0.016 min  
 Response: 213615651  
 Conc: 261.07 ng/ml

Instrument :  
 ECD\_O  
 ClientSampleId :  
 S-865-N-SO-1-1.5-082824



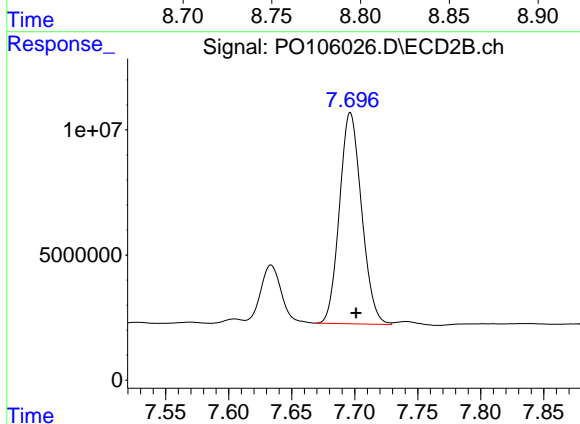
#41 AR-1268-1

R.T.: 7.634 min  
 Delta R.T.: -0.004 min  
 Response: 24028371  
 Conc: 69.96 ng/ml



#42 AR-1268-2

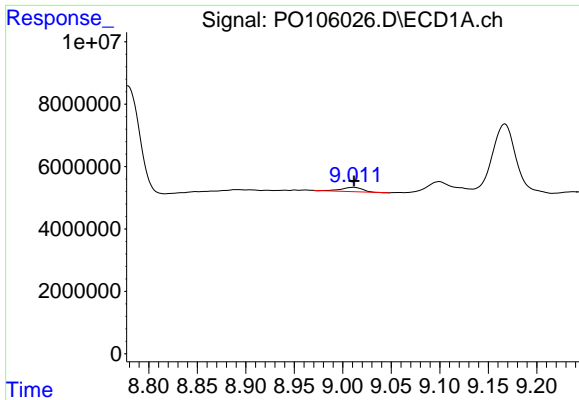
R.T.: 8.778 min  
 Delta R.T.: -0.004 min  
 Response: 37871717  
 Conc: 51.69 ng/ml



#42 AR-1268-2

R.T.: 7.697 min  
 Delta R.T.: -0.004 min  
 Response: 102868004  
 Conc: 319.40 ng/ml

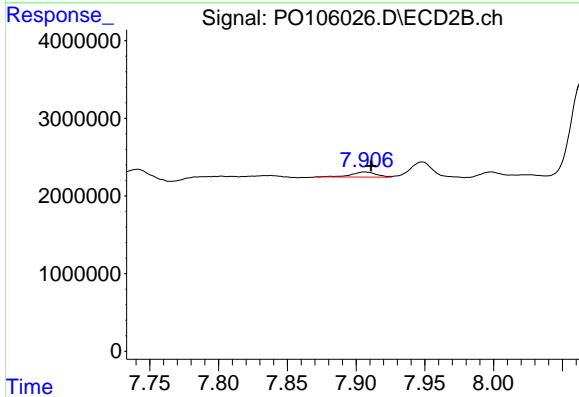




#43 AR-1268-3

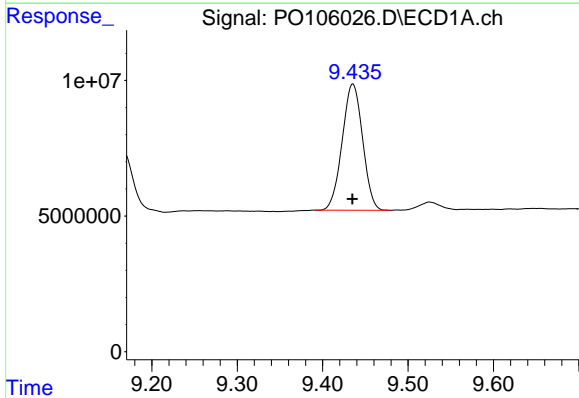
R.T.: 9.011 min  
 Delta R.T.: 0.000 min  
 Response: 2095057  
 Conc: 3.41 ng/ml

Instrument :  
 ECD\_O  
 ClientSampleId :  
 S-865-N-SO-1-1.5-082824



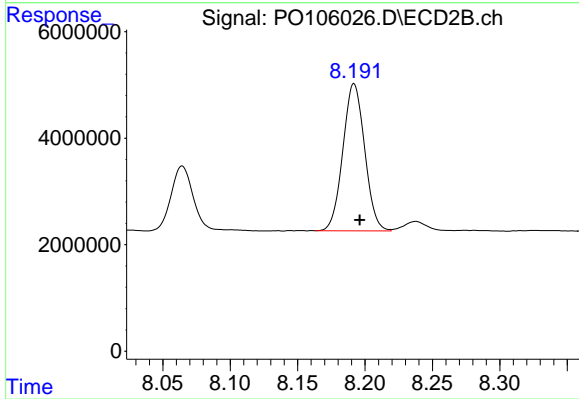
#43 AR-1268-3

R.T.: 7.906 min  
 Delta R.T.: -0.005 min  
 Response: 857585  
 Conc: 3.19 ng/ml



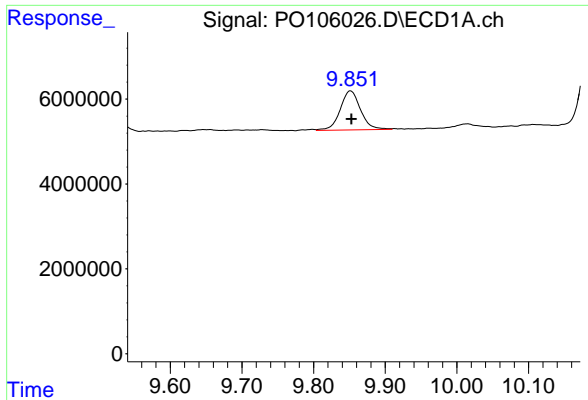
#44 AR-1268-4

R.T.: 9.436 min  
 Delta R.T.: 0.000 min  
 Response: 77349567  
 Conc: 285.96 ng/ml



#44 AR-1268-4

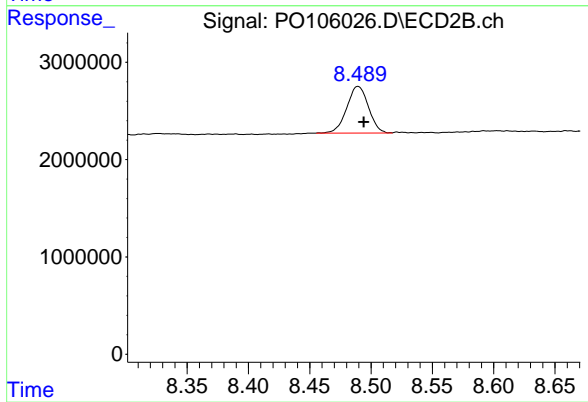
R.T.: 8.192 min  
 Delta R.T.: -0.004 min  
 Response: 31161303  
 Conc: 275.12 ng/ml



#45 AR-1268-5

R.T.: 9.852 min  
Delta R.T.: -0.001 min  
Response: 18081705  
Conc: 8.96 ng/ml

Instrument :  
ECD\_O  
ClientSampleId :  
S-865-N-SO-1-1.5-082824



#45 AR-1268-5

R.T.: 8.489 min  
Delta R.T.: -0.005 min  
Response: 5890187  
Conc: 6.89 ng/ml