

Data Path : Z:\pestpcbsrv\HPCHEM1\ECD\_0\Data\P0083019\  
 Data File : P0060082.D  
 Signal(s) : Signal #1: ECD1A.CH Signal #2: ECD2B.CH  
 Acq On : 30 Aug 2019 11:09  
 Operator : SM/AJ  
 Sample : PB122664BSD  
 Misc :  
 ALS Vial : 11 Sample Multiplier: 1

Instrument :  
 ECD\_0  
 ClientSampleId :  
 PB122664BSD

Integration File signal 1: autoint1.e  
 Integration File signal 2: autoint2.e  
 Quant Time: Aug 30 13:45:01 2019  
 Quant Method : Z:\pestpcbsrv\HPCHEM1\ECD\_0\methods\P0081719.M  
 Quant Title : GC EXTRACTABLES  
 QLast Update : Wed Aug 28 13:30:59 2019  
 Response via : Initial Calibration  
 Integrator: ChemStation 6890 Scale Mode: Small noise peaks clipped

Volume Inj. : 2 µl  
 Signal #1 Phase : ZB-MR1 Signal #2 Phase: ZB-MR2  
 Signal #1 Info : 30Mx0.32mmx 0.50µ Signal #2 Info : 30M x 0.32mm x 0.25µm

| Compound                    | RT#1  | RT#2  | Resp#1  | Resp#2 | ng/ml   | ng/ml     |
|-----------------------------|-------|-------|---------|--------|---------|-----------|
| System Monitoring Compounds |       |       |         |        |         |           |
| 1) SA Tetrachlo...          | 4.125 | 3.498 | 788533  | 683167 | 22.521  | 18.979    |
| 2) SA Decachlor...          | 9.585 | 8.353 | 906162  | 704107 | 17.033  | 17.463    |
| Target Compounds            |       |       |         |        |         |           |
| 3) L1 AR-1016-1             | 5.274 | 4.547 | 393277  | 276031 | 245.204 | 204.174   |
| 4) L1 AR-1016-2             | 5.295 | 4.564 | 569960  | 405267 | 238.228 | 202.329   |
| 5) L1 AR-1016-3             | 5.355 | 4.736 | 353968  | 183035 | 237.638 | 169.186 # |
| 6) L1 AR-1016-4             | 0.000 | 4.777 | 0       | 154260 | N.D.    | 170.832 # |
| 7) L1 AR-1016-5             | 5.779 | 4.985 | -86563  | 223762 | N.D.    | 194.250 # |
| 8) L2 AR-1221-1             | 4.391 | 3.701 | 873     | 20768  | 2.062   | 51.740 #  |
| 9) L2 AR-1221-2             | 4.422 | 3.787 | 43227   | 34350  | 133.089 | 112.763   |
| 10) L2 AR-1221-3            | 4.497 | 3.860 | 175329  | 133040 | 166.684 | 135.970   |
| 11) L3 AR-1232-1            | 4.497 | 3.860 | 175329  | 133040 | 140.664 | 116.688   |
| 12) L3 AR-1232-2            | 5.011 | 4.564 | 252638  | 405267 | 357.644 | 318.212   |
| 13) L3 AR-1232-3            | 5.295 | 4.736 | 569960  | 183035 | 372.191 | 268.810 # |
| 14) L3 AR-1232-4            | 5.539 | 4.846 | -47808  | 63142  | N.D.    | 103.502 # |
| 15) L3 AR-1232-5            | 5.582 | 4.985 | 247844  | 223762 | 412.297 | 328.707   |
| 16) L4 AR-1242-1            | 5.295 | 4.564 | 569960  | 405267 | 448.959 | 393.975   |
| 17) L4 AR-1242-2            | 5.295 | 4.564 | 569960  | 405267 | 307.148 | 266.083   |
| 18) L4 AR-1242-3            | 5.355 | 4.736 | 353968  | 183035 | 302.837 | 219.072 # |
| 19) L4 AR-1242-4            | 5.539 | 4.846 | -47808  | 63142  | N.D.    | 75.675 #  |
| 20) L4 AR-1242-5            | 6.259 | 5.326 | 33558   | 192227 | 26.705  | 171.846 # |
| 21) L5 AR-1248-1            | 5.274 | 4.547 | 393277  | 276031 | 392.275 | 333.361   |
| 22) L5 AR-1248-2            | 5.539 | 4.777 | -47808  | 154260 | N.D.    | 133.775 # |
| 23) L5 AR-1248-3            | 5.693 | 4.816 | 1116    | 196762 | 0.672   | 165.660 # |
| 24) L5 AR-1248-4            | 6.138 | 4.985 | 48005   | 223762 | 23.485  | 153.992 # |
| 25) L5 AR-1248-5            | 6.175 | 5.326 | 42277   | 192227 | 21.319  | 134.304 # |
| 26) L6 AR-1254-1            | 6.109 | 5.326 | 274111  | 192227 | 131.379 | 81.047 #  |
| 27) L6 AR-1254-2            | 6.323 | 5.471 | 274324  | 178598 | 82.225  | 85.115    |
| 28) L6 AR-1254-3            | 6.689 | 5.878 | 135994  | 332247 | 38.325  | 98.809 #  |
| 29) L6 AR-1254-4            | 6.970 | 6.093 | 92613   | 28911  | 31.442  | 14.022 #  |
| 30) L6 AR-1254-5            | 7.386 | 6.500 | 967757  | 596585 | 312.947 | 192.139 # |
| 31) L7 AR-1260-1            | 6.846 | 5.992 | 612126  | 463578 | 227.065 | 203.421   |
| 32) L7 AR-1260-2            | 7.102 | 6.179 | 737031  | 576006 | 198.635 | 196.597   |
| 33) L7 AR-1260-3            | 7.455 | 6.328 | 527017  | 506588 | 160.856 | 191.227   |
| 34) L7 AR-1260-4            | 7.682 | 6.790 | 585727  | 375931 | 190.709 | 166.152   |
| 35) L7 AR-1260-5            | 7.989 | 7.034 | 1136013 | 883931 | 160.433 | 160.618   |
| 36) L8 AR-1262-1            | 7.513 | 6.534 | 295465  | 461618 | 60.884  | 123.839 # |
| 37) L8 AR-1262-2            | 8.033 | 7.034 | 184227  | 883931 | 23.876  | 150.353 # |
| 38) L8 AR-1262-3            | 8.290 | 7.307 | 495145  | 200090 | 97.043  | 78.746    |
| 39) L8 AR-1262-4            | 8.334 | 7.373 | 559792  | 600071 | 145.222 | 135.795   |
| 40) L8 AR-1262-5            | 8.942 | 7.864 | 362396  | 178548 | 141.199 | 98.888 #  |
| 41) L9 AR-1268-1            | 8.290 | 7.307 | 495145  | 200090 | 52.615  | 28.099 #  |

Data Path : Z:\pestpcbsrv\HPCHEM1\ECD\_0\Data\P0083019\  
 Data File : P0060082.D  
 Signal(s) : Signal #1: ECD1A.CH Signal #2: ECD2B.CH  
 Acq On : 30 Aug 2019 11:09  
 Operator : SM/AJ  
 Sample : PB122664BSD  
 Misc :  
 ALS Vial : 11 Sample Multiplier: 1

Instrument :  
 ECD\_0  
 ClientSampleId :  
 PB122664BSD

Integration File signal 1: autoint1.e  
 Integration File signal 2: autoint2.e  
 Quant Time: Aug 30 13:45:01 2019  
 Quant Method : Z:\pestpcbsrv\HPCHEM1\ECD\_0\methods\P0081719.M  
 Quant Title : GC EXTRACTABLES  
 QLast Update : Wed Aug 28 13:30:59 2019  
 Response via : Initial Calibration  
 Integrator: ChemStation 6890 Scale Mode: Small noise peaks clipped

Volume Inj. : 2 µl  
 Signal #1 Phase : ZB-MR1 Signal #2 Phase: ZB-MR2  
 Signal #1 Info : 30Mx0.32mmx 0.50µ Signal #2 Info : 30M x 0.32mm x 0.25µm

|     | Compound     | RT#1  | RT#2  | Resp#1 | Resp#2 | ng/ml   | ng/ml    |
|-----|--------------|-------|-------|--------|--------|---------|----------|
| 42) | L9 AR-1268-2 | 8.334 | 7.373 | 559792 | 600071 | 71.015  | 93.063 # |
| 43) | L9 AR-1268-3 | 8.649 | 7.565 | 240139 | 27981  | 34.068  | 5.114 #  |
| 44) | L9 AR-1268-4 | 8.942 | 7.864 | 362396 | 178548 | 130.356 | 87.468 # |
| 45) | L9 AR-1268-5 | 9.360 | 8.130 | 34478  | 57897  | 1.870   | 3.985 #  |

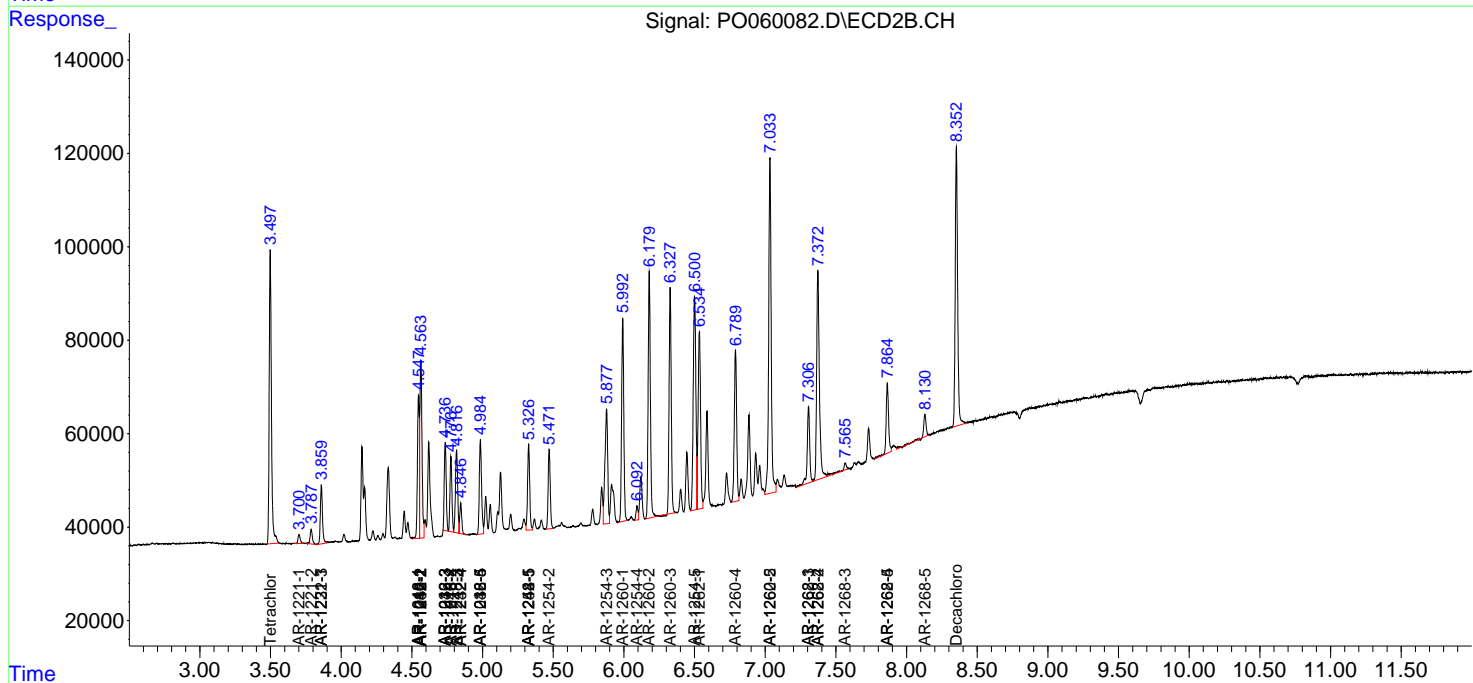
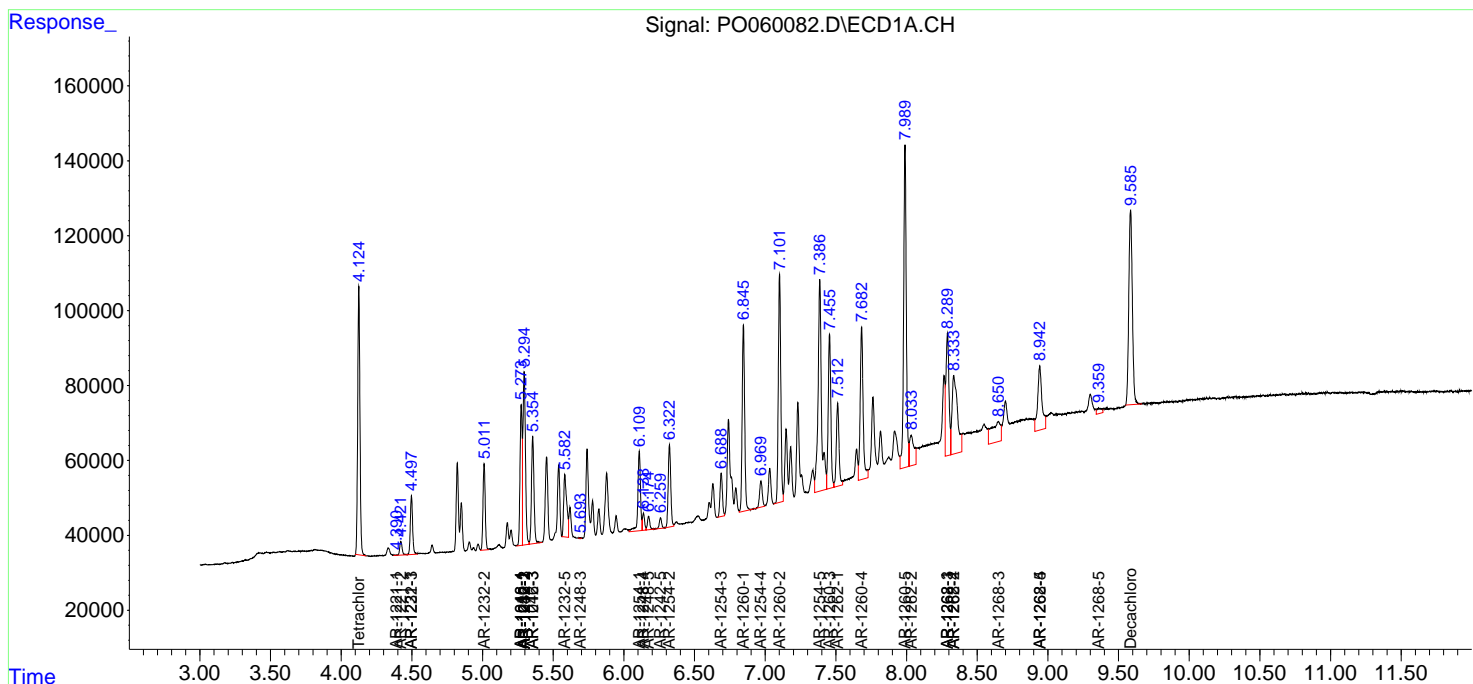
(f)=RT Delta > 1/2 Window (#)=Amounts differ by > 25% (m)=manual int.

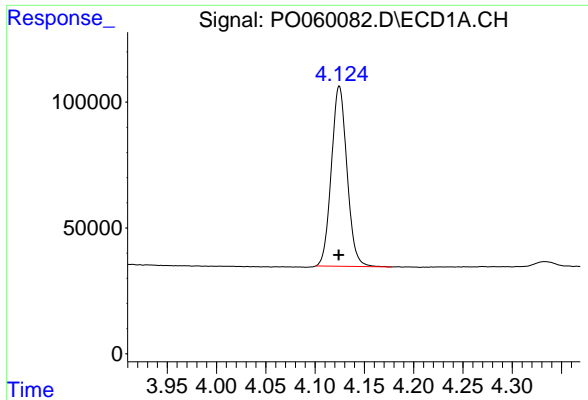
Data Path : Z:\pestpcbsrv\HPCHEM1\ECD\_O\Data\PO083019\  
 Data File : PO060082.D  
 Signal(s) : Signal #1: ECD1A.CH Signal #2: ECD2B.CH  
 Acq On : 30 Aug 2019 11:09  
 Operator : SM/AJ  
 Sample : PB122664BSD  
 Misc :  
 ALS Vial : 11 Sample Multiplier: 1

Instrument :  
 ECD\_O  
 ClientSampled :  
 PB122664BSD

Integration File signal 1: autoint1.e  
 Integration File signal 2: autoint2.e  
 Quant Time: Aug 30 13:45:01 2019  
 Quant Method : Z:\pestpcbsrv\HPCHEM1\ECD\_O\methods\PO081719.M  
 Quant Title : GC EXTRACTABLES  
 QLast Update : Wed Aug 28 13:30:59 2019  
 Response via : Initial Calibration  
 Integrator: ChemStation 6890 Scale Mode: Small noise peaks clipped

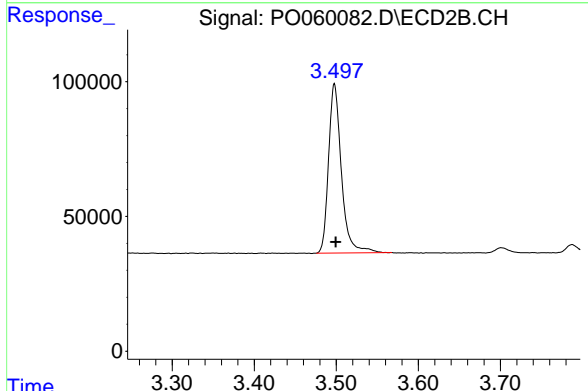
Volume Inj. : 2 µl  
 Signal #1 Phase : ZB-MR1 Signal #2 Phase: ZB-MR2  
 Signal #1 Info : 30Mx0.32mmx 0.50µ Signal #2 Info : 30M x 0.32mm x 0.25µm



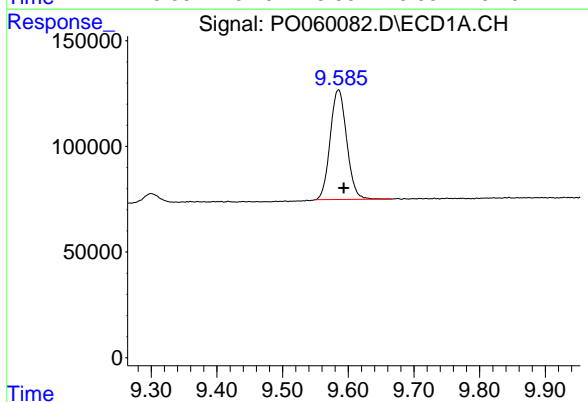


#1 Tetrachloro-m-xylene  
 R.T.: 4.125 min  
 Delta R.T.: 0.000 min  
 Response: 788533  
 Conc: 22.52 ng/ml

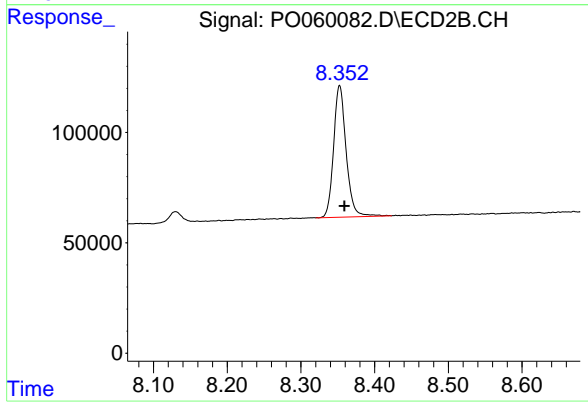
Instrument :  
 ECD\_O  
 ClientSampleId :  
 PB122664BSD



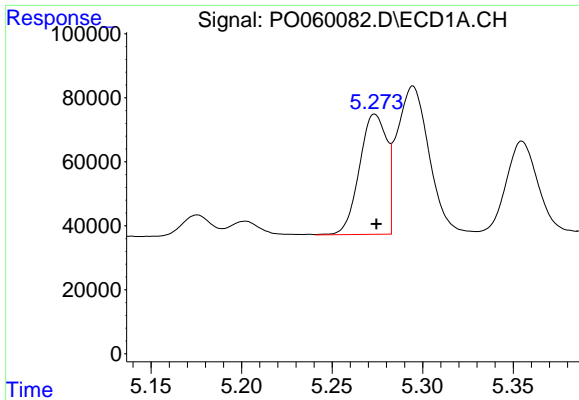
#1 Tetrachloro-m-xylene  
 R.T.: 3.498 min  
 Delta R.T.: -0.002 min  
 Response: 683167  
 Conc: 18.98 ng/ml



#2 Decachlorobiphenyl  
 R.T.: 9.585 min  
 Delta R.T.: -0.008 min  
 Response: 906162  
 Conc: 17.03 ng/ml

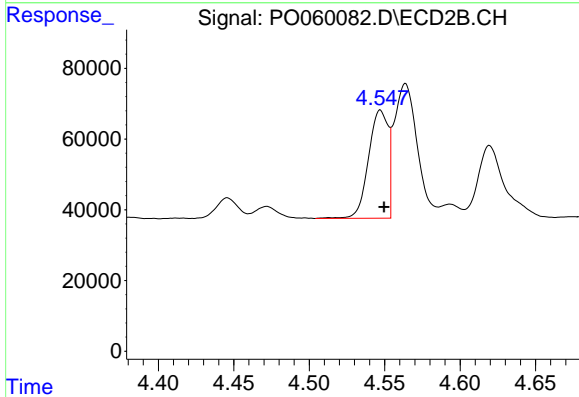


#2 Decachlorobiphenyl  
 R.T.: 8.353 min  
 Delta R.T.: -0.007 min  
 Response: 704107  
 Conc: 17.46 ng/ml

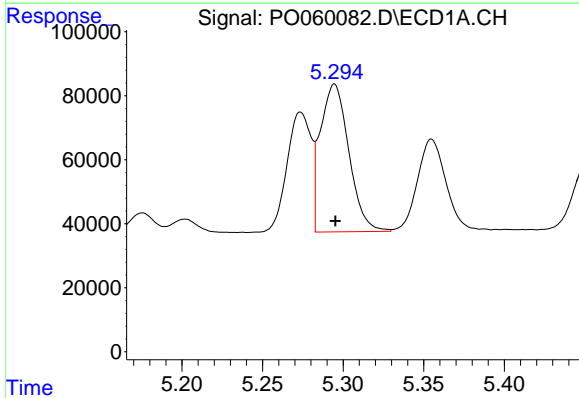


#3 AR-1016-1  
 R.T.: 5.274 min  
 Delta R.T.: 0.000 min  
 Response: 393277  
 Conc: 245.20 ng/ml

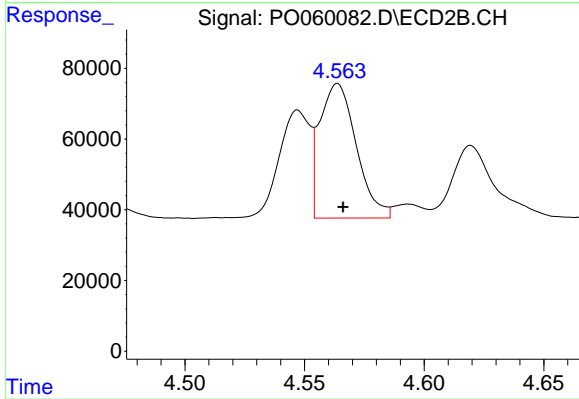
Instrument :  
 ECD\_O  
 ClientSampleId :  
 PB122664BSD



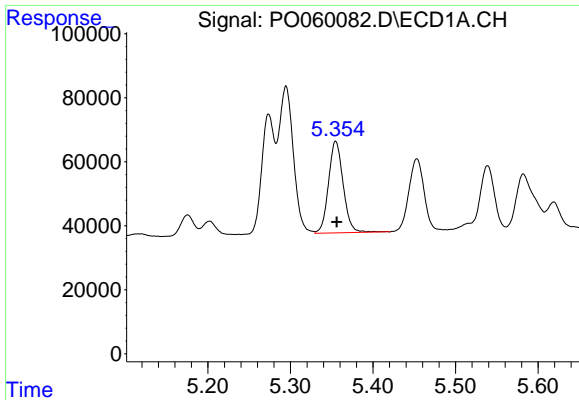
#3 AR-1016-1  
 R.T.: 4.547 min  
 Delta R.T.: -0.002 min  
 Response: 276031  
 Conc: 204.17 ng/ml



#4 AR-1016-2  
 R.T.: 5.295 min  
 Delta R.T.: 0.000 min  
 Response: 569960  
 Conc: 238.23 ng/ml

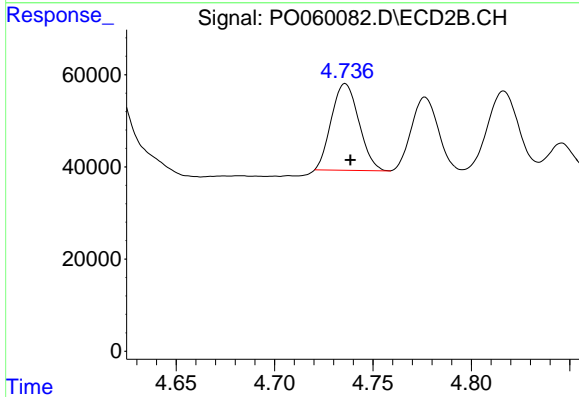


#4 AR-1016-2  
 R.T.: 4.564 min  
 Delta R.T.: -0.002 min  
 Response: 405267  
 Conc: 202.33 ng/ml

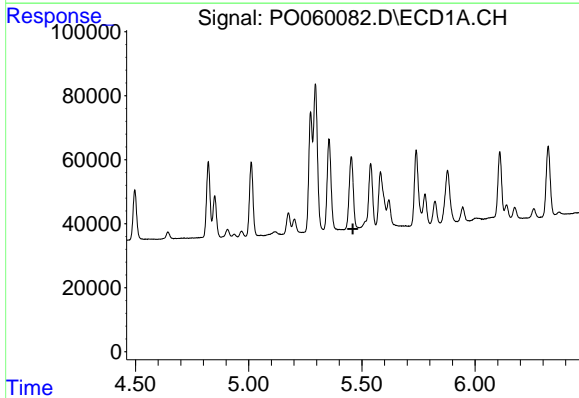


#5 AR-1016-3  
 R.T.: 5.355 min  
 Delta R.T.: -0.001 min  
 Response: 353968  
 Conc: 237.64 ng/ml

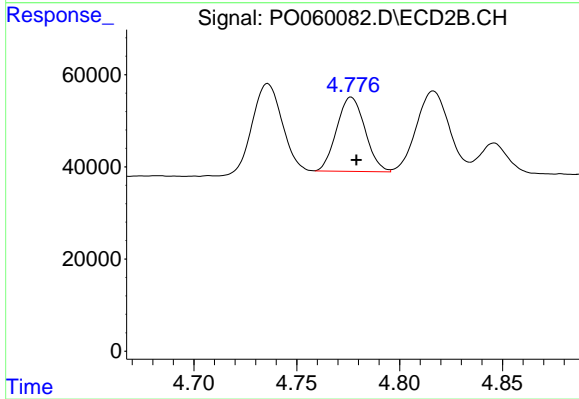
Instrument :  
 ECD\_O  
 ClientSampleId :  
 PB122664BSD



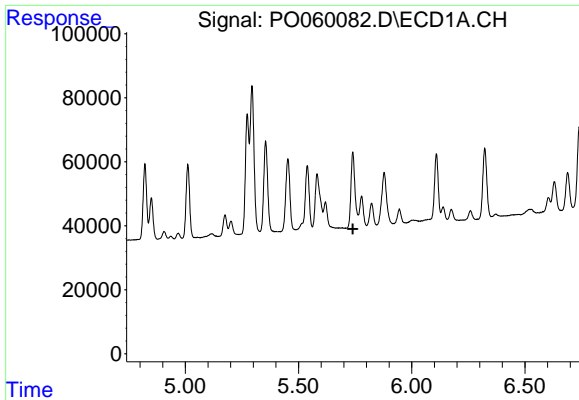
#5 AR-1016-3  
 R.T.: 4.736 min  
 Delta R.T.: -0.003 min  
 Response: 183035  
 Conc: 169.19 ng/ml



#6 AR-1016-4  
 R.T.: 0.000 min  
 Exp R.T. : 5.460 min  
 Response: 0  
 Conc: N.D.



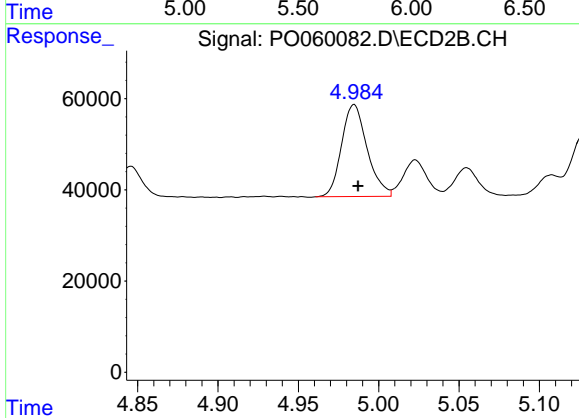
#6 AR-1016-4  
 R.T.: 4.777 min  
 Delta R.T.: -0.002 min  
 Response: 154260  
 Conc: 170.83 ng/ml



#7 AR-1016-5

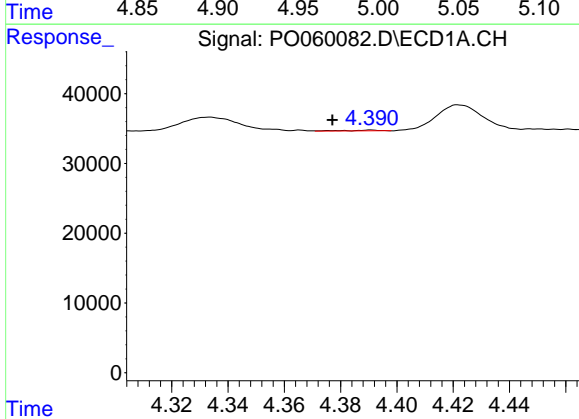
R.T.: 5.779 min  
 Delta R.T.: 0.039 min  
 Response: -86563  
 Conc: N.D.

Instrument :  
 ECD\_O  
 ClientSampleId :  
 PB122664BSD



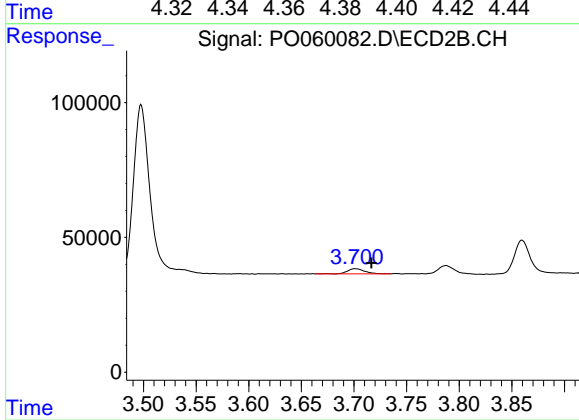
#7 AR-1016-5

R.T.: 4.985 min  
 Delta R.T.: -0.002 min  
 Response: 223762  
 Conc: 194.25 ng/ml



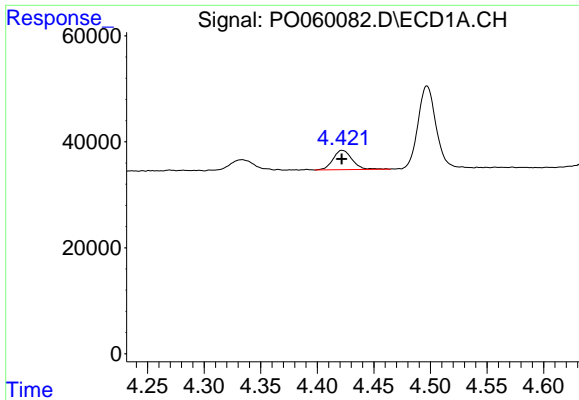
#8 AR-1221-1

R.T.: 4.391 min  
 Delta R.T.: 0.014 min  
 Response: 873  
 Conc: 2.06 ng/ml



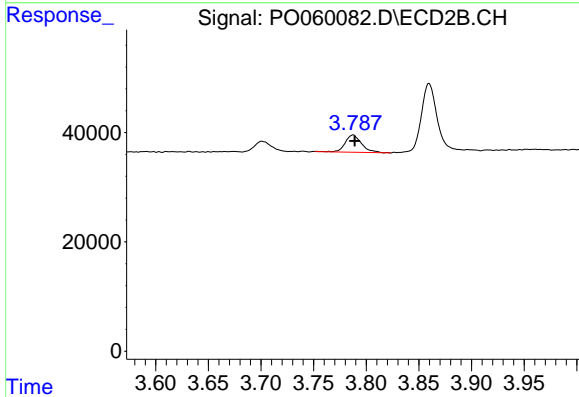
#8 AR-1221-1

R.T.: 3.701 min  
 Delta R.T.: -0.015 min  
 Response: 20768  
 Conc: 51.74 ng/ml

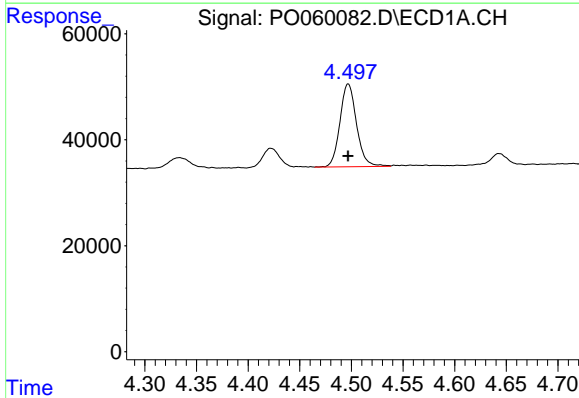


#9 AR-1221-2  
 R.T.: 4.422 min  
 Delta R.T.: 0.000 min  
 Response: 43227  
 Conc: 133.09 ng/ml

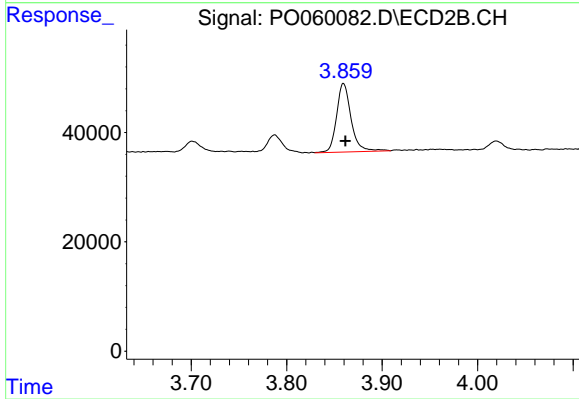
Instrument :  
 ECD\_O  
 ClientSampleId :  
 PB122664BSD



#9 AR-1221-2  
 R.T.: 3.787 min  
 Delta R.T.: -0.002 min  
 Response: 34350  
 Conc: 112.76 ng/ml

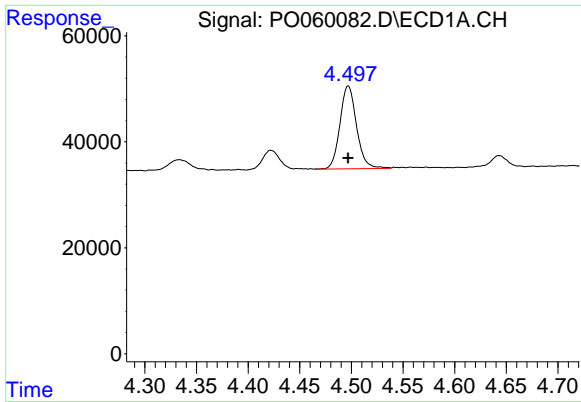


#10 AR-1221-3  
 R.T.: 4.497 min  
 Delta R.T.: 0.000 min  
 Response: 175329  
 Conc: 166.68 ng/ml



#10 AR-1221-3  
 R.T.: 3.860 min  
 Delta R.T.: -0.002 min  
 Response: 133040  
 Conc: 135.97 ng/ml

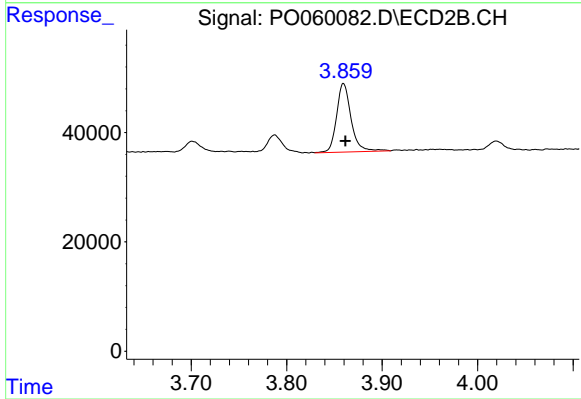




#11 AR-1232-1

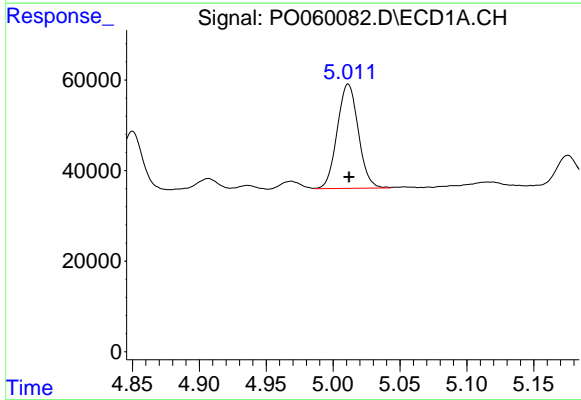
R.T.: 4.497 min  
 Delta R.T.: 0.000 min  
 Response: 175329  
 Conc: 140.66 ng/ml

Instrument :  
 ECD\_O  
 ClientSampleId :  
 PB122664BSD



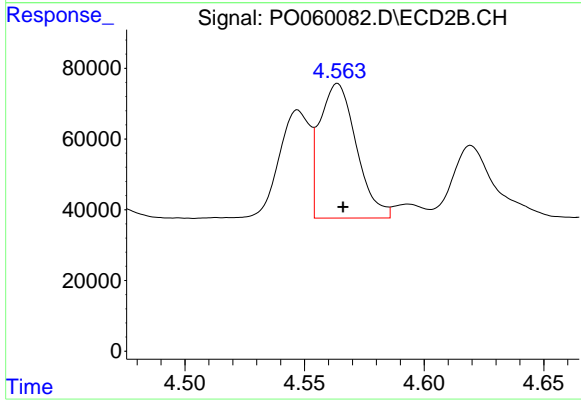
#11 AR-1232-1

R.T.: 3.860 min  
 Delta R.T.: -0.002 min  
 Response: 133040  
 Conc: 116.69 ng/ml



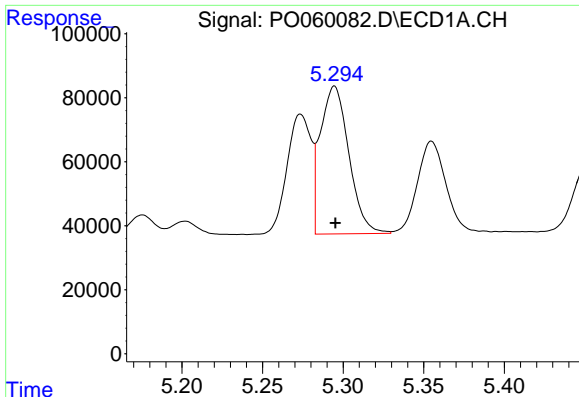
#12 AR-1232-2

R.T.: 5.011 min  
 Delta R.T.: 0.000 min  
 Response: 252638  
 Conc: 357.64 ng/ml



#12 AR-1232-2

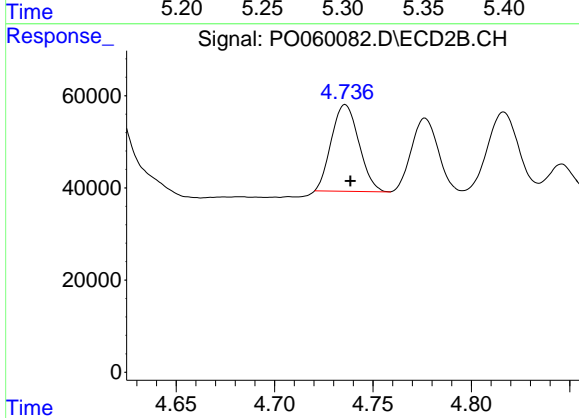
R.T.: 4.564 min  
 Delta R.T.: -0.002 min  
 Response: 405267  
 Conc: 318.21 ng/ml



#13 AR-1232-3

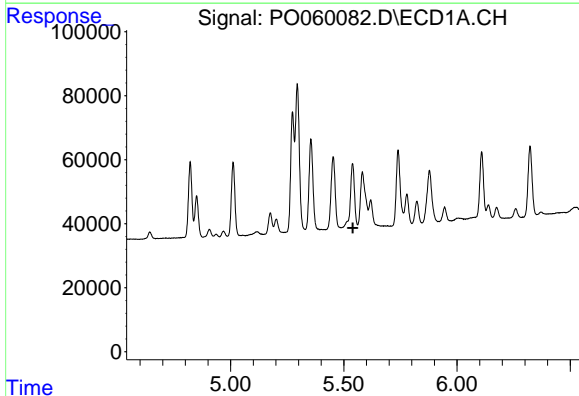
R.T.: 5.295 min  
 Delta R.T.: 0.000 min  
 Response: 569960  
 Conc: 372.19 ng/ml

Instrument :  
 ECD\_O  
 ClientSampleId :  
 PB122664BSD



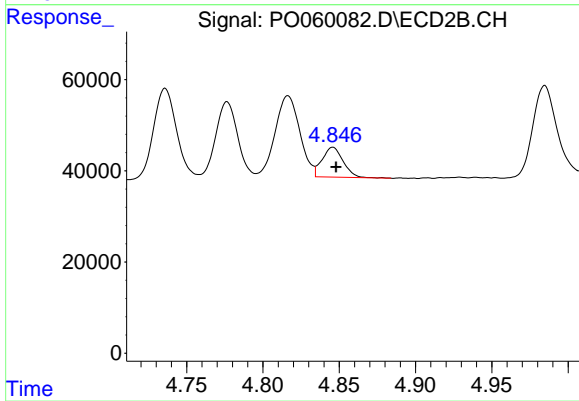
#13 AR-1232-3

R.T.: 4.736 min  
 Delta R.T.: -0.003 min  
 Response: 183035  
 Conc: 268.81 ng/ml



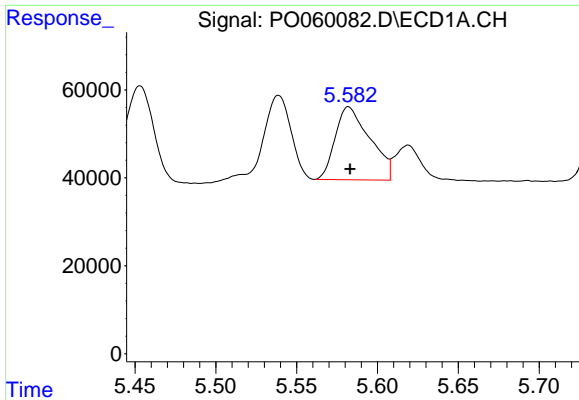
#14 AR-1232-4

R.T.: 5.539 min  
 Delta R.T.: -0.001 min  
 Response: -47808  
 Conc: N.D.



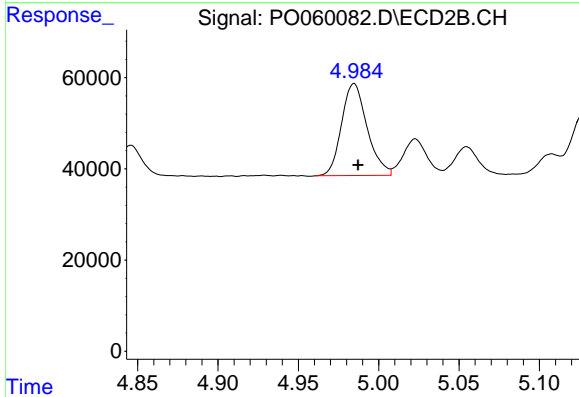
#14 AR-1232-4

R.T.: 4.846 min  
 Delta R.T.: -0.002 min  
 Response: 63142  
 Conc: 103.50 ng/ml

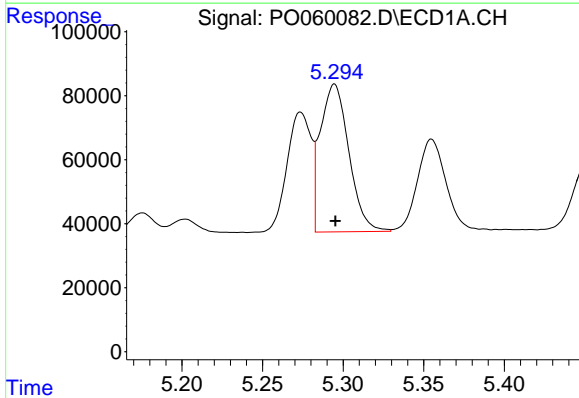


#15 AR-1232-5  
 R.T.: 5.582 min  
 Delta R.T.: 0.000 min  
 Response: 247844  
 Conc: 412.30 ng/ml

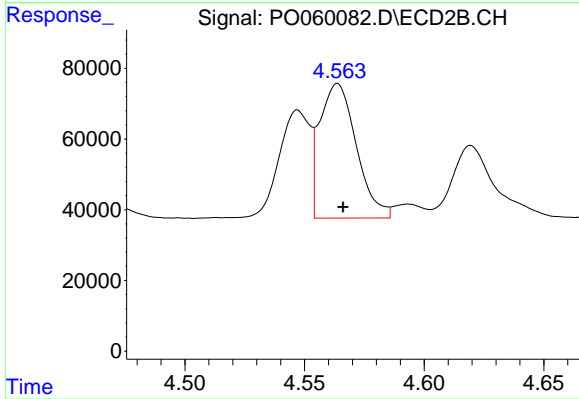
**Instrument :**  
 ECD\_O  
**ClientSampleId :**  
 PB122664BSD



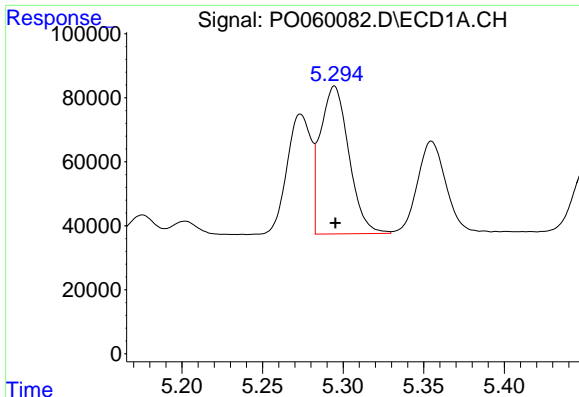
#15 AR-1232-5  
 R.T.: 4.985 min  
 Delta R.T.: -0.002 min  
 Response: 223762  
 Conc: 328.71 ng/ml



#16 AR-1242-1  
 R.T.: 5.295 min  
 Delta R.T.: 0.000 min  
 Response: 569960  
 Conc: 448.96 ng/ml



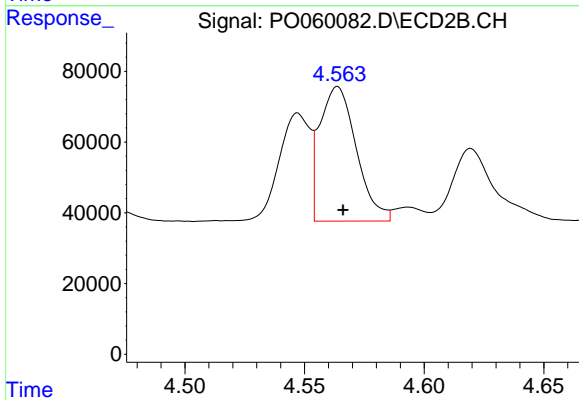
#16 AR-1242-1  
 R.T.: 4.564 min  
 Delta R.T.: -0.002 min  
 Response: 405267  
 Conc: 393.98 ng/ml



#17 AR-1242-2

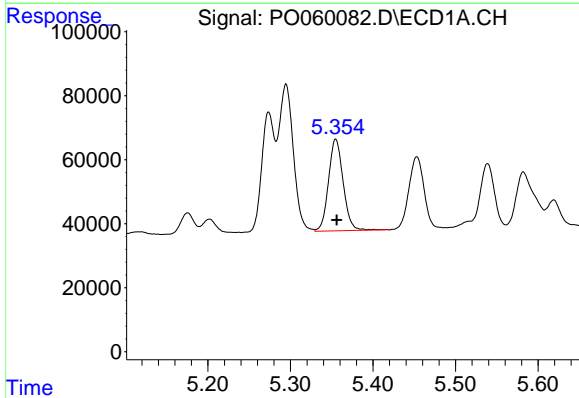
R.T.: 5.295 min  
 Delta R.T.: 0.000 min  
 Response: 569960  
 Conc: 307.15 ng/ml

Instrument :  
 ECD\_O  
 ClientSampleId :  
 PB122664BSD



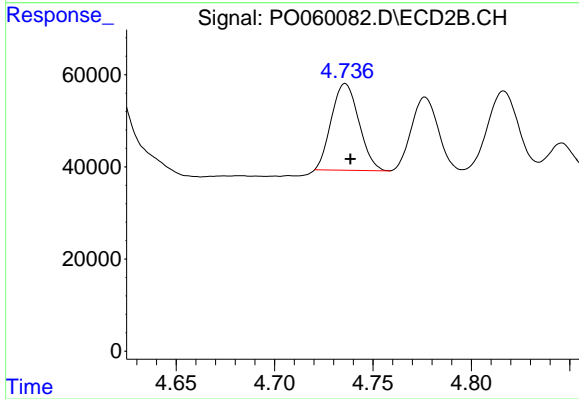
#17 AR-1242-2

R.T.: 4.564 min  
 Delta R.T.: -0.002 min  
 Response: 405267  
 Conc: 266.08 ng/ml



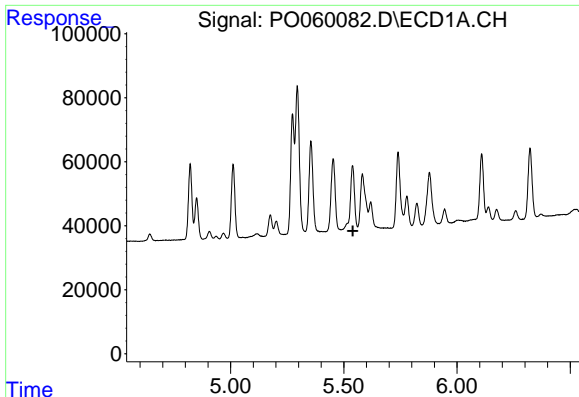
#18 AR-1242-3

R.T.: 5.355 min  
 Delta R.T.: -0.001 min  
 Response: 353968  
 Conc: 302.84 ng/ml



#18 AR-1242-3

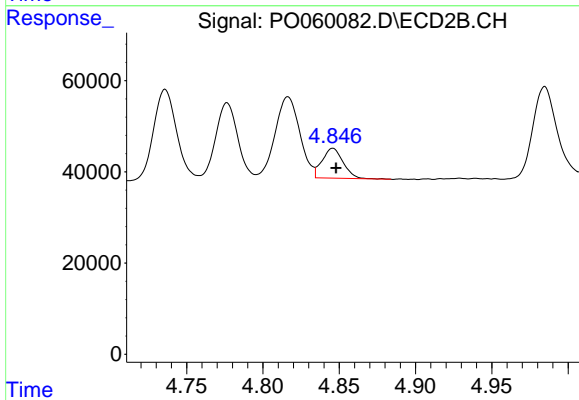
R.T.: 4.736 min  
 Delta R.T.: -0.003 min  
 Response: 183035  
 Conc: 219.07 ng/ml



#19 AR-1242-4

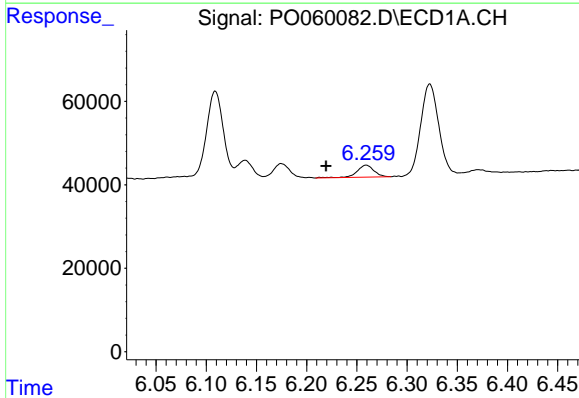
R.T.: 5.539 min  
 Delta R.T.: -0.001 min  
 Response: -47808  
 Conc: N.D.

Instrument :  
 ECD\_O  
 ClientSampleId :  
 PB122664BSD



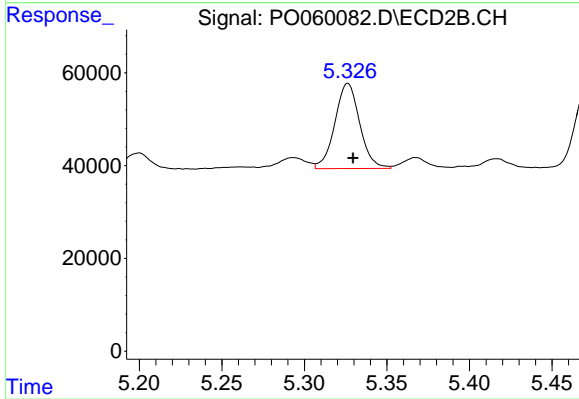
#19 AR-1242-4

R.T.: 4.846 min  
 Delta R.T.: -0.002 min  
 Response: 63142  
 Conc: 75.67 ng/ml



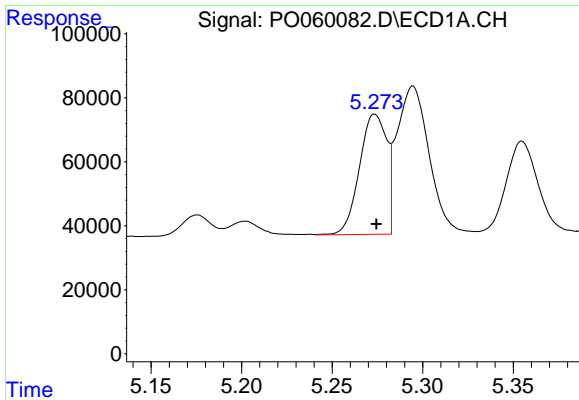
#20 AR-1242-5

R.T.: 6.259 min  
 Delta R.T.: 0.040 min  
 Response: 33558  
 Conc: 26.71 ng/ml



#20 AR-1242-5

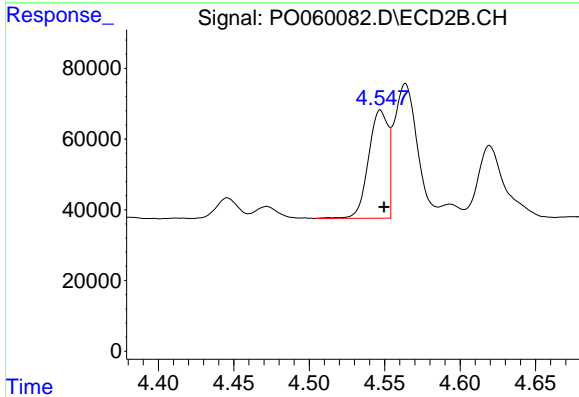
R.T.: 5.326 min  
 Delta R.T.: -0.003 min  
 Response: 192227  
 Conc: 171.85 ng/ml



#21 AR-1248-1

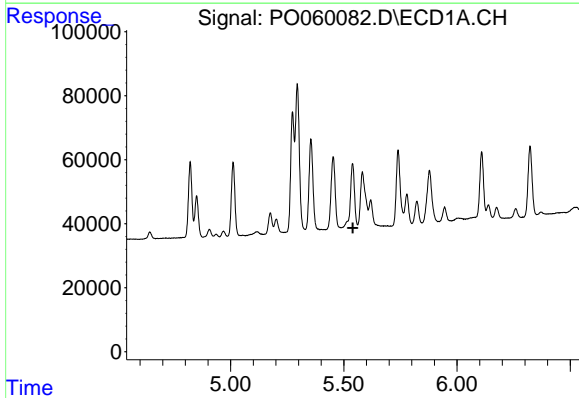
R.T.: 5.274 min  
 Delta R.T.: 0.000 min  
 Response: 393277  
 Conc: 392.28 ng/ml

Instrument :  
 ECD\_O  
 ClientSampleId :  
 PB122664BSD



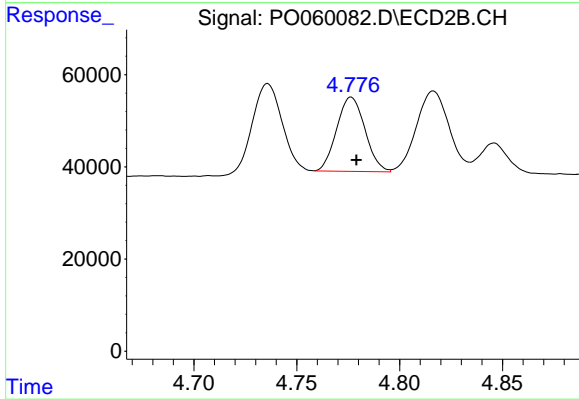
#21 AR-1248-1

R.T.: 4.547 min  
 Delta R.T.: -0.002 min  
 Response: 276031  
 Conc: 333.36 ng/ml



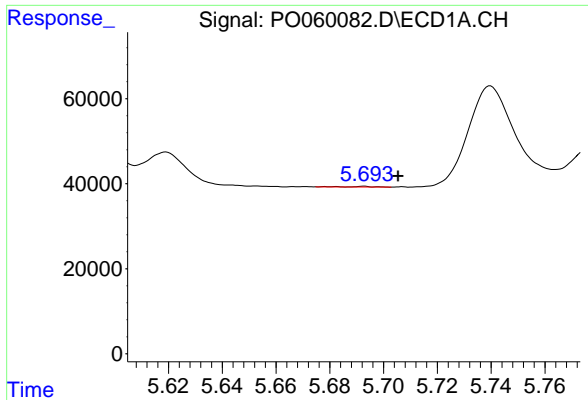
#22 AR-1248-2

R.T.: 5.539 min  
 Delta R.T.: -0.001 min  
 Response: -47808  
 Conc: N.D.



#22 AR-1248-2

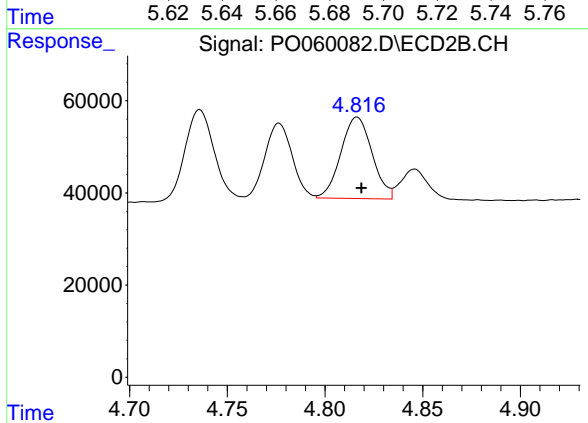
R.T.: 4.777 min  
 Delta R.T.: -0.002 min  
 Response: 154260  
 Conc: 133.78 ng/ml



#23 AR-1248-3

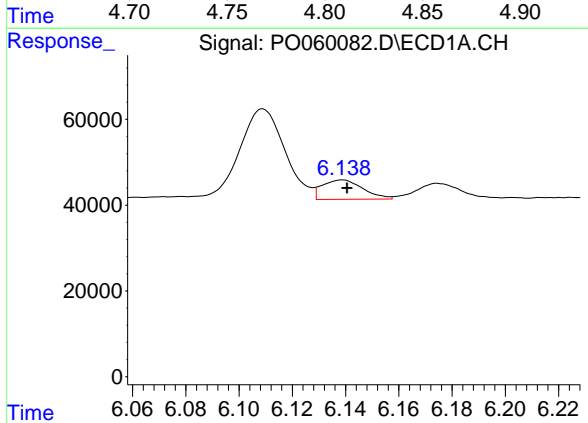
R.T.: 5.693 min  
 Delta R.T.: -0.013 min  
 Response: 1116  
 Conc: 0.67 ng/ml

Instrument :  
 ECD\_O  
 ClientSampleId :  
 PB122664BSD



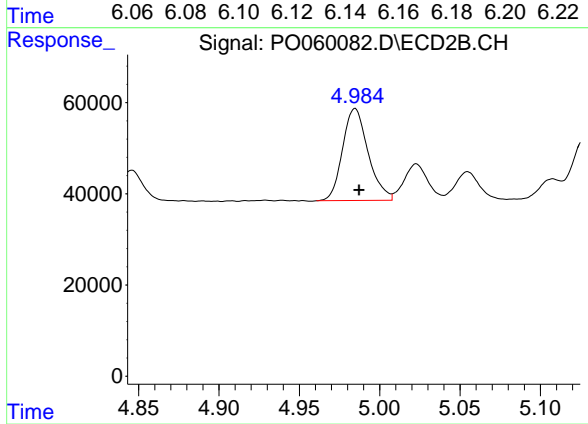
#23 AR-1248-3

R.T.: 4.816 min  
 Delta R.T.: -0.002 min  
 Response: 196762  
 Conc: 165.66 ng/ml



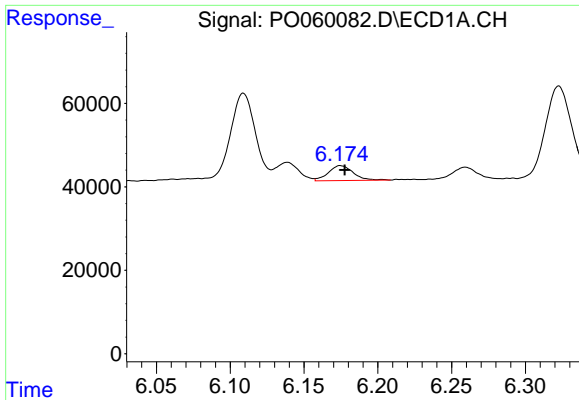
#24 AR-1248-4

R.T.: 6.138 min  
 Delta R.T.: -0.002 min  
 Response: 48005  
 Conc: 23.48 ng/ml



#24 AR-1248-4

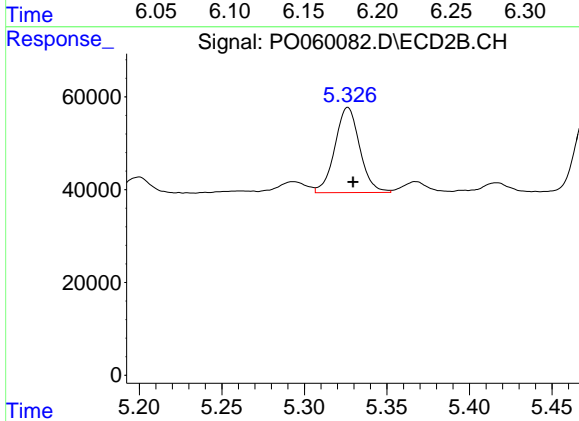
R.T.: 4.985 min  
 Delta R.T.: -0.002 min  
 Response: 223762  
 Conc: 153.99 ng/ml



#25 AR-1248-5

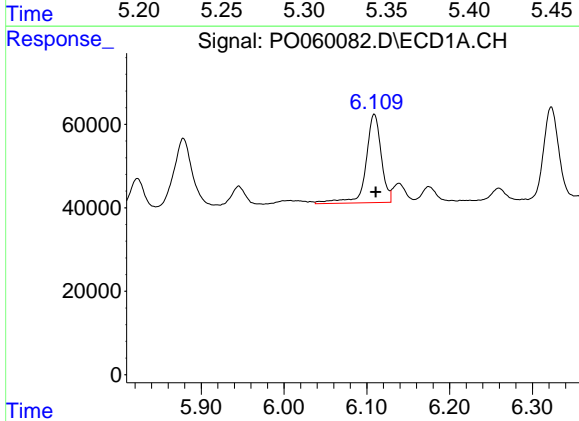
R.T.: 6.175 min  
 Delta R.T.: -0.003 min  
 Response: 42277  
 Conc: 21.32 ng/ml

Instrument :  
 ECD\_O  
 ClientSampleId :  
 PB122664BSD



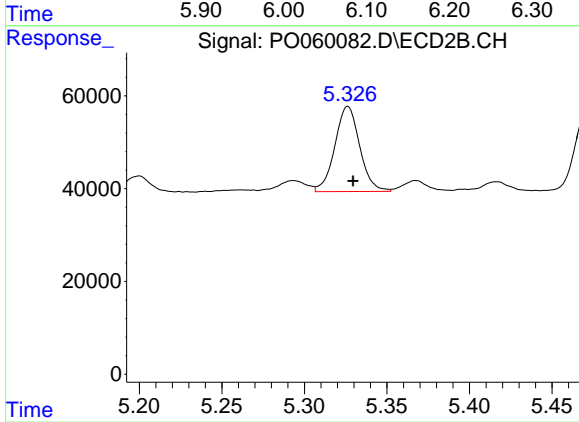
#25 AR-1248-5

R.T.: 5.326 min  
 Delta R.T.: -0.003 min  
 Response: 192227  
 Conc: 134.30 ng/ml



#26 AR-1254-1

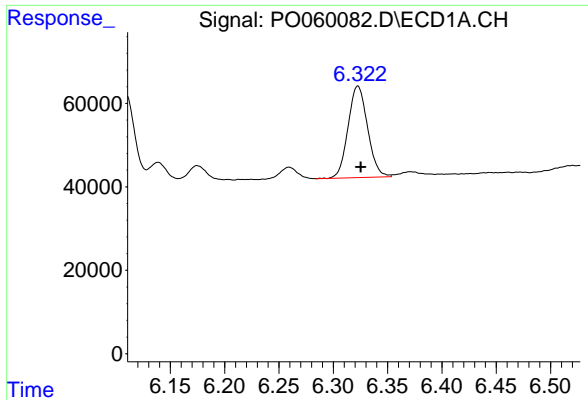
R.T.: 6.109 min  
 Delta R.T.: -0.002 min  
 Response: 274111  
 Conc: 131.38 ng/ml



#26 AR-1254-1

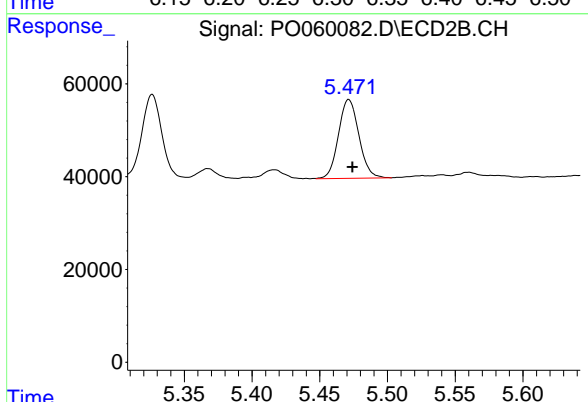
R.T.: 5.326 min  
 Delta R.T.: -0.003 min  
 Response: 192227  
 Conc: 81.05 ng/ml



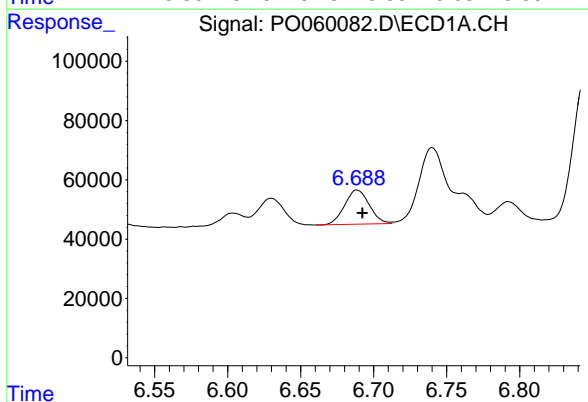


#27 AR-1254-2  
 R.T.: 6.323 min  
 Delta R.T.: -0.002 min  
 Response: 274324  
 Conc: 82.23 ng/ml

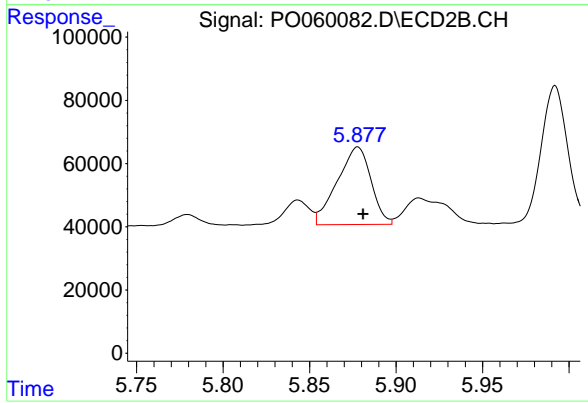
**Instrument :**  
 ECD\_O  
**ClientSampleId :**  
 PB122664BSD



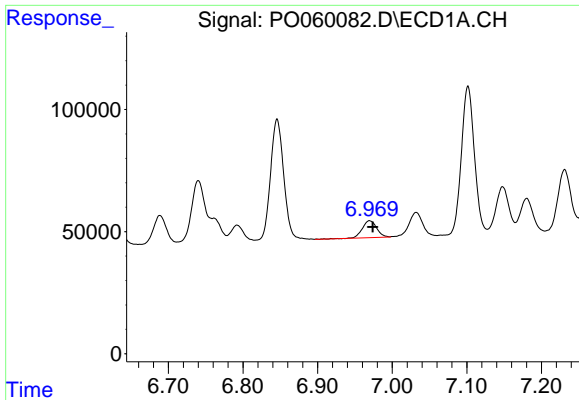
#27 AR-1254-2  
 R.T.: 5.471 min  
 Delta R.T.: -0.003 min  
 Response: 178598  
 Conc: 85.12 ng/ml



#28 AR-1254-3  
 R.T.: 6.689 min  
 Delta R.T.: -0.003 min  
 Response: 135994  
 Conc: 38.32 ng/ml



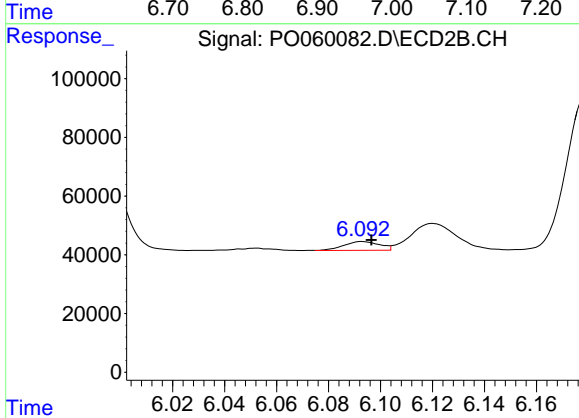
#28 AR-1254-3  
 R.T.: 5.878 min  
 Delta R.T.: -0.003 min  
 Response: 332247  
 Conc: 98.81 ng/ml



#29 AR-1254-4

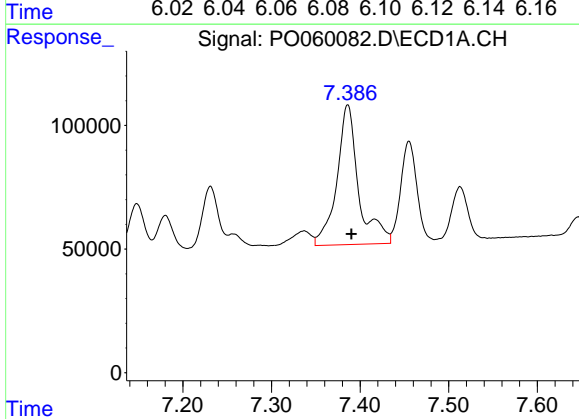
R.T.: 6.970 min  
 Delta R.T.: -0.004 min  
 Response: 92613  
 Conc: 31.44 ng/ml

Instrument :  
 ECD\_O  
 ClientSampleId :  
 PB122664BSD



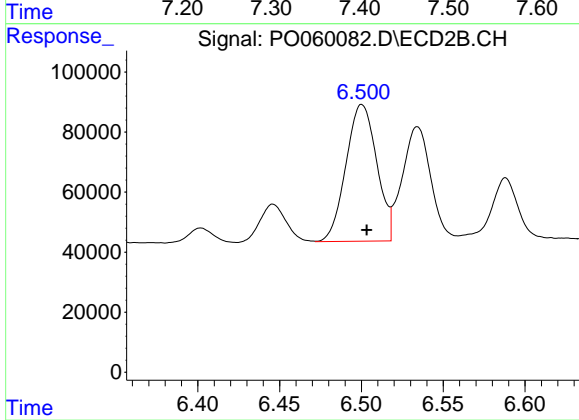
#29 AR-1254-4

R.T.: 6.093 min  
 Delta R.T.: -0.004 min  
 Response: 28911  
 Conc: 14.02 ng/ml



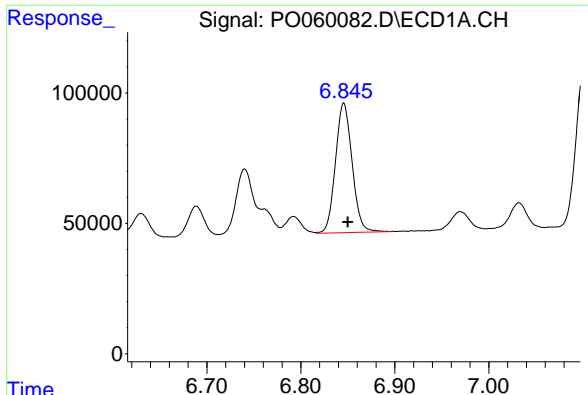
#30 AR-1254-5

R.T.: 7.386 min  
 Delta R.T.: -0.004 min  
 Response: 967757  
 Conc: 312.95 ng/ml



#30 AR-1254-5

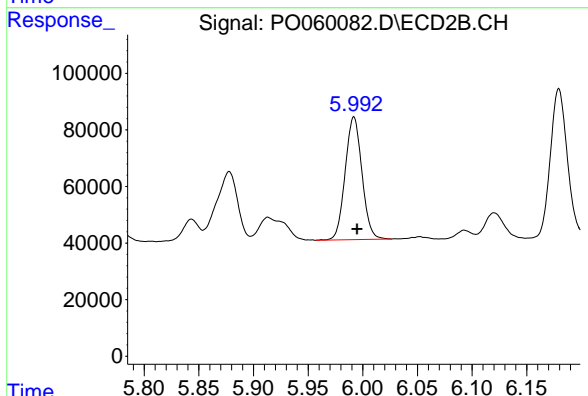
R.T.: 6.500 min  
 Delta R.T.: -0.003 min  
 Response: 596585  
 Conc: 192.14 ng/ml



#31 AR-1260-1

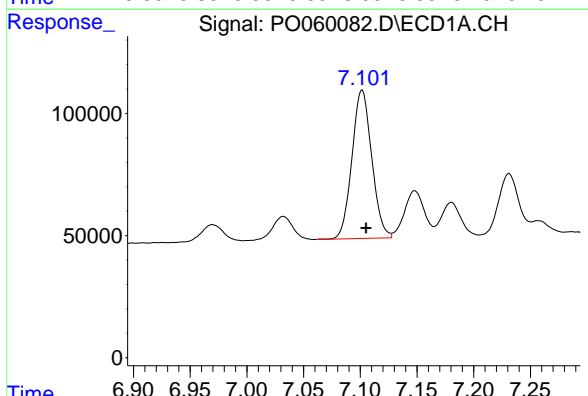
R.T.: 6.846 min  
 Delta R.T.: -0.004 min  
 Response: 612126  
 Conc: 227.07 ng/ml

Instrument :  
 ECD\_O  
 ClientSampleId :  
 PB122664BSD



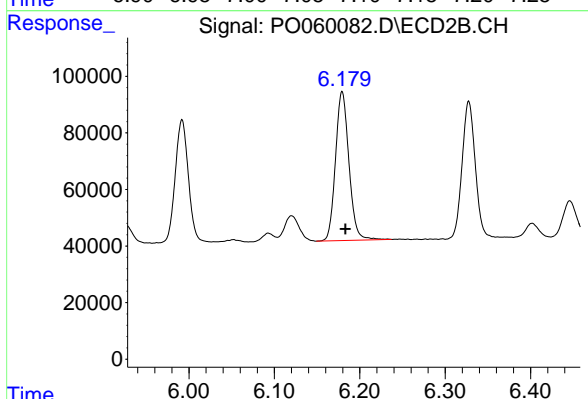
#31 AR-1260-1

R.T.: 5.992 min  
 Delta R.T.: -0.003 min  
 Response: 463578  
 Conc: 203.42 ng/ml



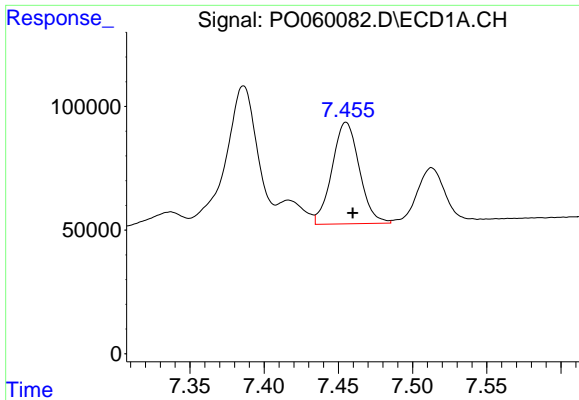
#32 AR-1260-2

R.T.: 7.102 min  
 Delta R.T.: -0.004 min  
 Response: 737031  
 Conc: 198.64 ng/ml



#32 AR-1260-2

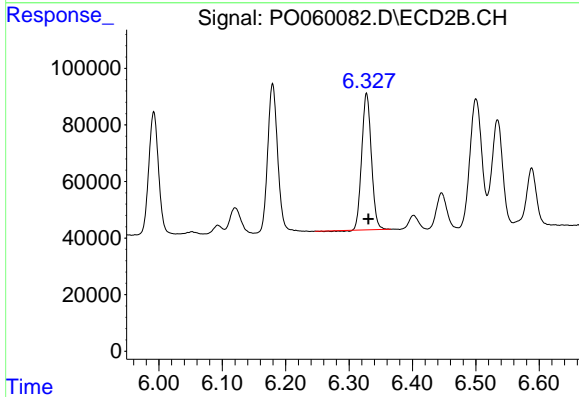
R.T.: 6.179 min  
 Delta R.T.: -0.004 min  
 Response: 576006  
 Conc: 196.60 ng/ml



#33 AR-1260-3

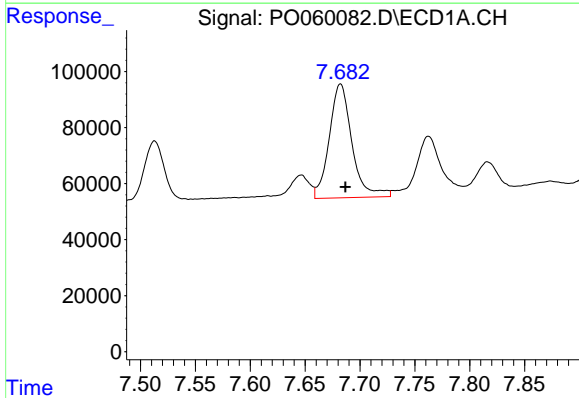
R.T.: 7.455 min  
 Delta R.T.: -0.004 min  
 Response: 527017  
 Conc: 160.86 ng/ml

Instrument :  
 ECD\_O  
 ClientSampleId :  
 PB122664BSD



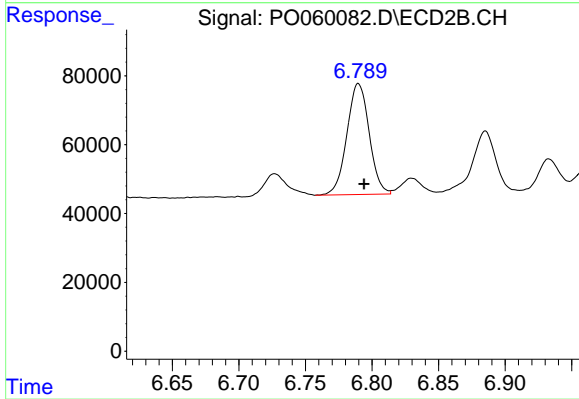
#33 AR-1260-3

R.T.: 6.328 min  
 Delta R.T.: -0.003 min  
 Response: 506588  
 Conc: 191.23 ng/ml



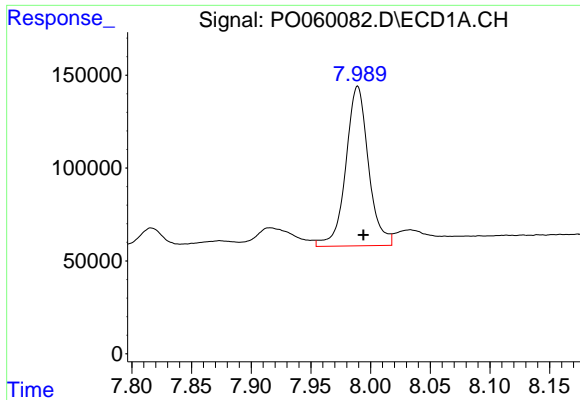
#34 AR-1260-4

R.T.: 7.682 min  
 Delta R.T.: -0.005 min  
 Response: 585727  
 Conc: 190.71 ng/ml



#34 AR-1260-4

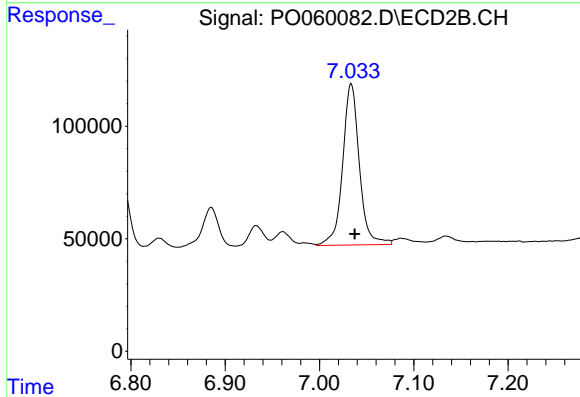
R.T.: 6.790 min  
 Delta R.T.: -0.004 min  
 Response: 375931  
 Conc: 166.15 ng/ml



#35 AR-1260-5

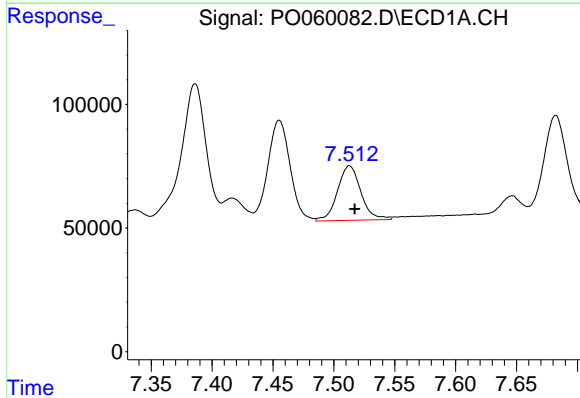
R.T.: 7.989 min  
 Delta R.T.: -0.005 min  
 Response: 1136013  
 Conc: 160.43 ng/ml

Instrument :  
 ECD\_O  
 ClientSampleId :  
 PB122664BSD



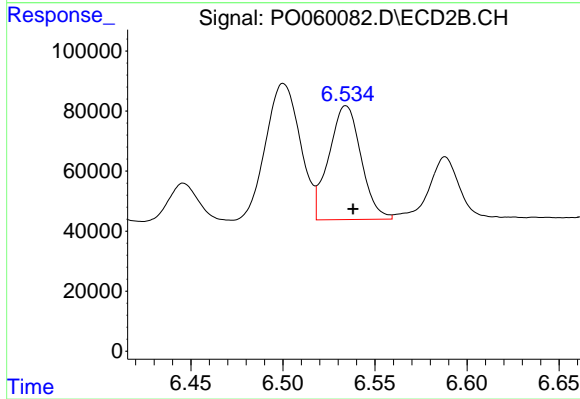
#35 AR-1260-5

R.T.: 7.034 min  
 Delta R.T.: -0.004 min  
 Response: 883931  
 Conc: 160.62 ng/ml



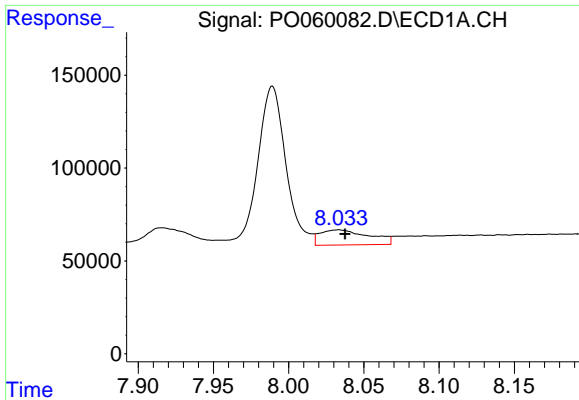
#36 AR-1262-1

R.T.: 7.513 min  
 Delta R.T.: -0.004 min  
 Response: 295465  
 Conc: 60.88 ng/ml



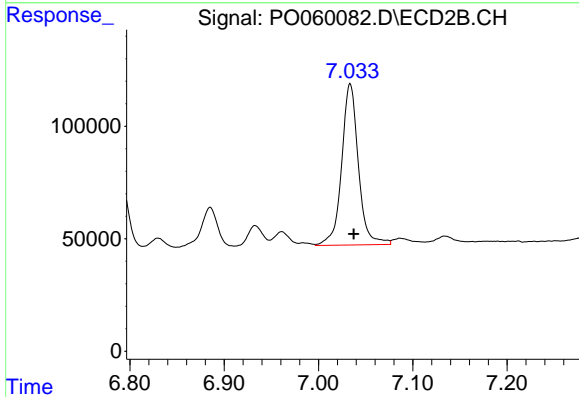
#36 AR-1262-1

R.T.: 6.534 min  
 Delta R.T.: -0.004 min  
 Response: 461618  
 Conc: 123.84 ng/ml

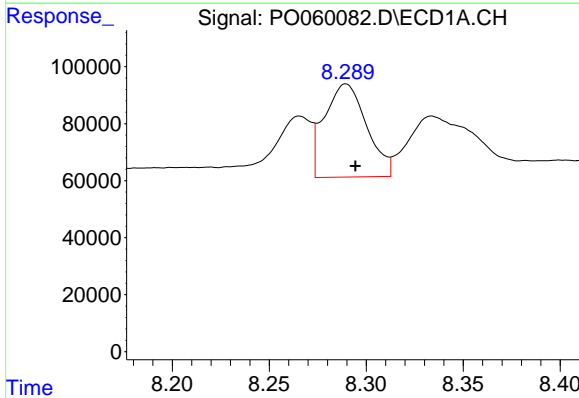


#37 AR-1262-2  
 R.T.: 8.033 min  
 Delta R.T.: -0.005 min  
 Response: 184227  
 Conc: 23.88 ng/ml

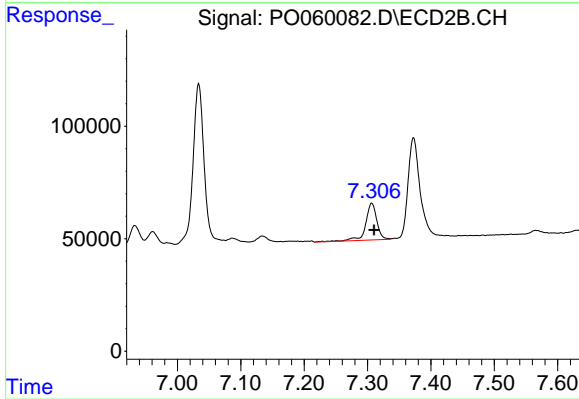
**Instrument :**  
 ECD\_O  
**ClientSampled :**  
 PB122664BSD



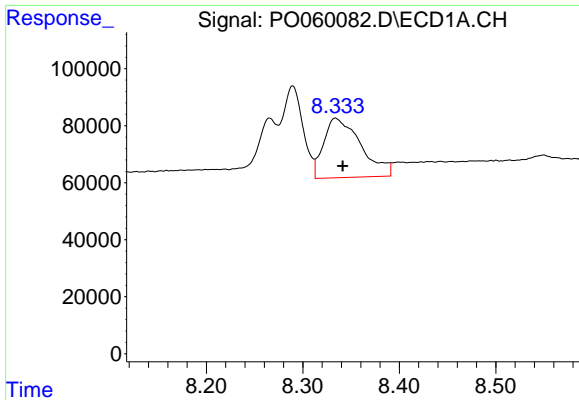
#37 AR-1262-2  
 R.T.: 7.034 min  
 Delta R.T.: -0.004 min  
 Response: 883931  
 Conc: 150.35 ng/ml



#38 AR-1262-3  
 R.T.: 8.290 min  
 Delta R.T.: -0.005 min  
 Response: 495145  
 Conc: 97.04 ng/ml



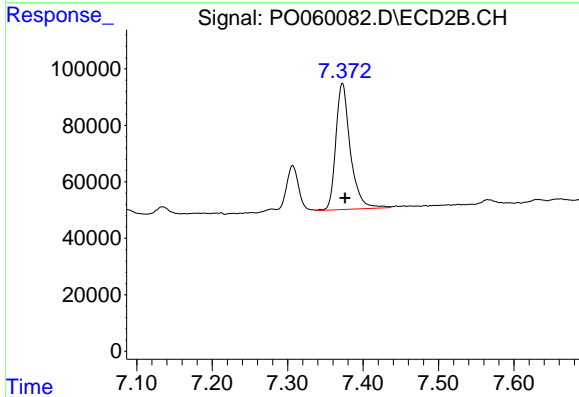
#38 AR-1262-3  
 R.T.: 7.307 min  
 Delta R.T.: -0.004 min  
 Response: 200090  
 Conc: 78.75 ng/ml



#39 AR-1262-4

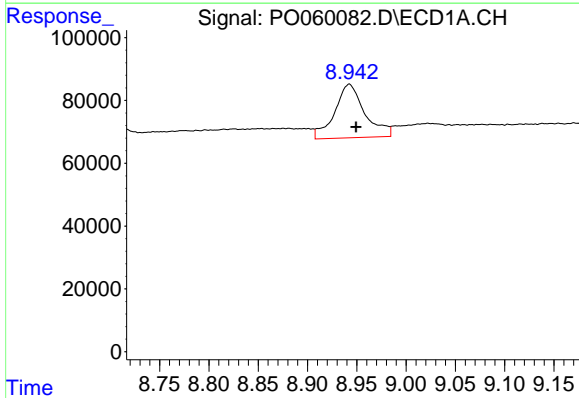
R.T.: 8.334 min  
 Delta R.T.: -0.007 min  
 Response: 559792  
 Conc: 145.22 ng/ml

Instrument :  
 ECD\_O  
 ClientSampleId :  
 PB122664BSD



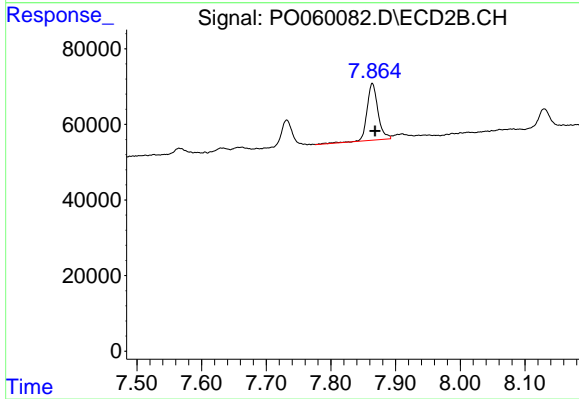
#39 AR-1262-4

R.T.: 7.373 min  
 Delta R.T.: -0.004 min  
 Response: 600071  
 Conc: 135.80 ng/ml



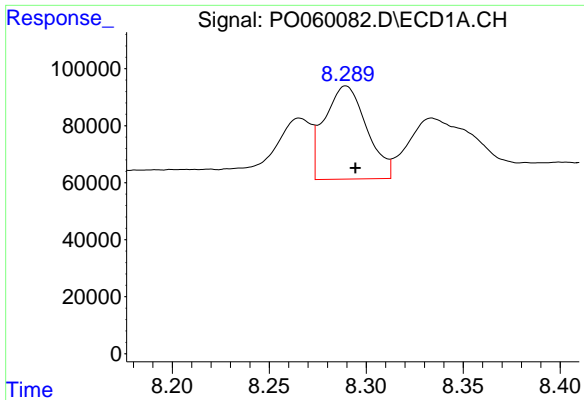
#40 AR-1262-5

R.T.: 8.942 min  
 Delta R.T.: -0.007 min  
 Response: 362396  
 Conc: 141.20 ng/ml



#40 AR-1262-5

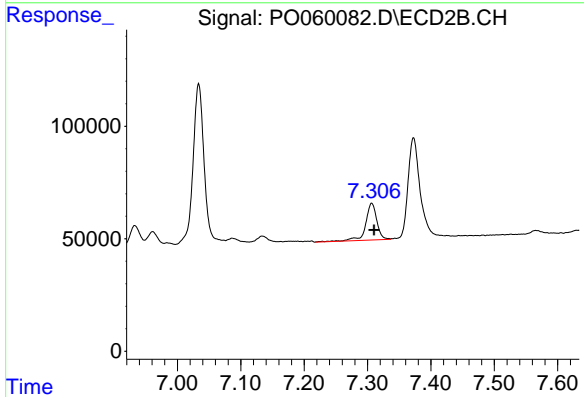
R.T.: 7.864 min  
 Delta R.T.: -0.004 min  
 Response: 178548  
 Conc: 98.89 ng/ml



#41 AR-1268-1

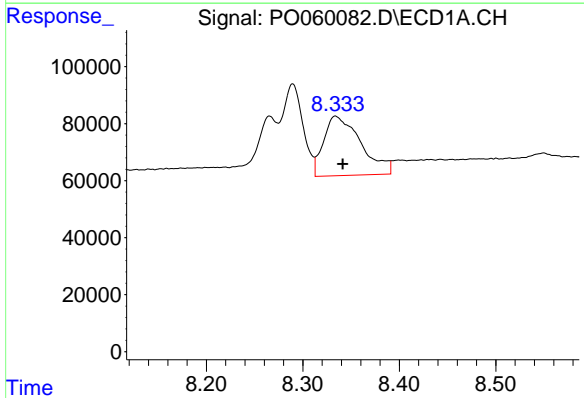
R.T.: 8.290 min  
 Delta R.T.: -0.005 min  
 Response: 495145  
 Conc: 52.62 ng/ml

Instrument :  
 ECD\_O  
 ClientSampleId :  
 PB122664BSD



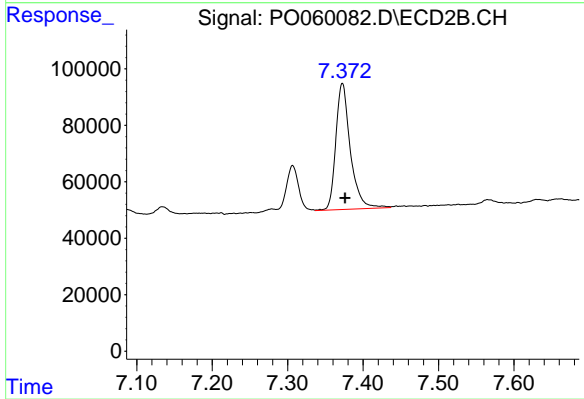
#41 AR-1268-1

R.T.: 7.307 min  
 Delta R.T.: -0.004 min  
 Response: 200090  
 Conc: 28.10 ng/ml



#42 AR-1268-2

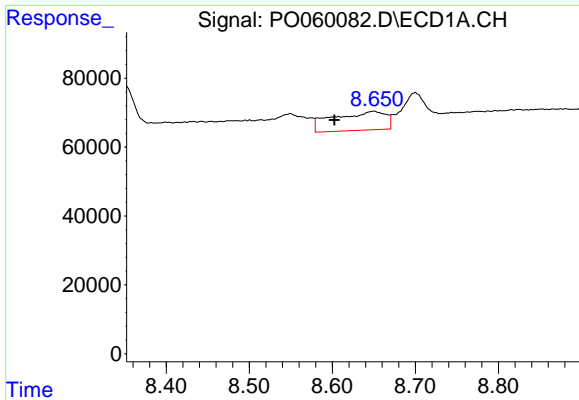
R.T.: 8.334 min  
 Delta R.T.: -0.007 min  
 Response: 559792  
 Conc: 71.02 ng/ml



#42 AR-1268-2

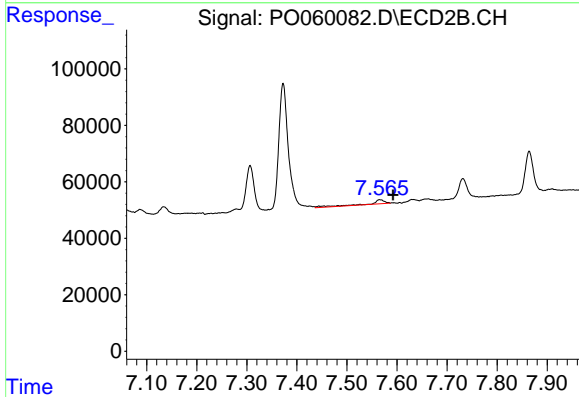
R.T.: 7.373 min  
 Delta R.T.: -0.004 min  
 Response: 600071  
 Conc: 93.06 ng/ml



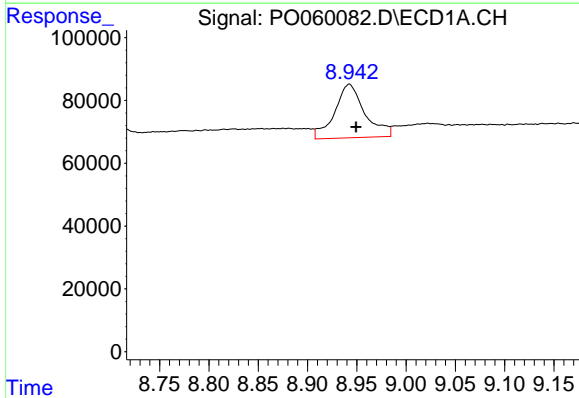


#43 AR-1268-3  
 R.T.: 8.649 min  
 Delta R.T.: 0.047 min  
 Response: 240139  
 Conc: 34.07 ng/ml

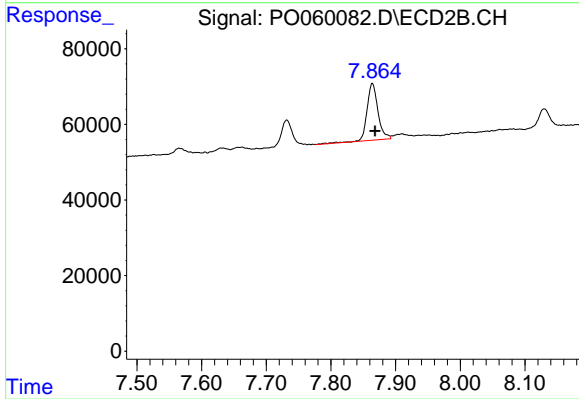
Instrument :  
 ECD\_O  
 ClientSampleId :  
 PB122664BSD



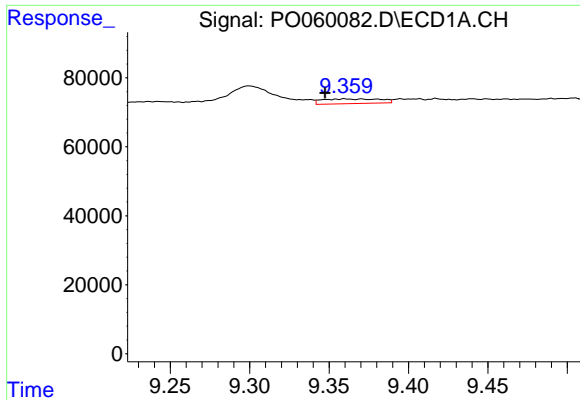
#43 AR-1268-3  
 R.T.: 7.565 min  
 Delta R.T.: -0.027 min  
 Response: 27981  
 Conc: 5.11 ng/ml



#44 AR-1268-4  
 R.T.: 8.942 min  
 Delta R.T.: -0.007 min  
 Response: 362396  
 Conc: 130.36 ng/ml



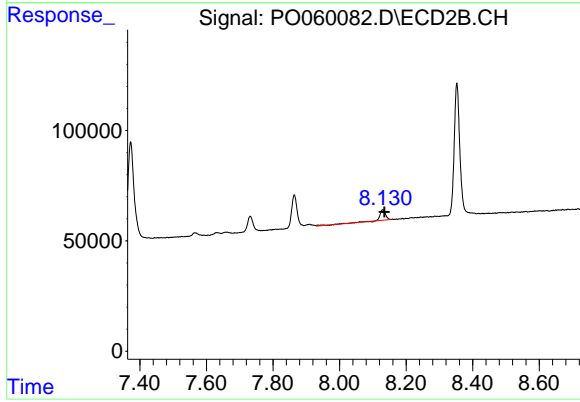
#44 AR-1268-4  
 R.T.: 7.864 min  
 Delta R.T.: -0.004 min  
 Response: 178548  
 Conc: 87.47 ng/ml



#45 AR-1268-5

R.T.: 9.360 min  
Delta R.T.: 0.012 min  
Response: 34478  
Conc: 1.87 ng/ml

Instrument :  
ECD\_O  
ClientSampleId :  
PB122664BSD



#45 AR-1268-5

R.T.: 8.130 min  
Delta R.T.: -0.005 min  
Response: 57897  
Conc: 3.98 ng/ml