

Data Path : Z:\pestpcbsrv\HPCHEM1\ECD\_0\Data\P0083019\  
 Data File : P0060128.D  
 Signal(s) : Signal #1: ECD1A.CH Signal #2: ECD2B.CH  
 Acq On : 31 Aug 2019 1:01  
 Operator : SM/AJ  
 Sample : K4619-15  
 Misc :  
 ALS Vial : 51 Sample Multiplier: 1

Instrument :  
 ECD\_0  
 ClientSampleId :  
 TP5-COMP

Integration File signal 1: autoint1.e  
 Integration File signal 2: autoint2.e  
 Quant Time: Aug 31 01:27:27 2019  
 Quant Method : Z:\pestpcbsrv\HPCHEM1\ECD\_0\methods\P0081719.M  
 Quant Title : GC EXTRACTABLES  
 QLast Update : Fri Aug 30 18:12:46 2019  
 Response via : Initial Calibration  
 Integrator: ChemStation 6890 Scale Mode: Small noise peaks clipped

Volume Inj. : 2 µl  
 Signal #1 Phase : ZB-MR1 Signal #2 Phase: ZB-MR2  
 Signal #1 Info : 30Mx0.32mmx 0.50µ Signal #2 Info : 30M x 0.32mm x 0.25µm

Compound	RT#1	RT#2	Resp#1	Resp#2	ng/ml	ng/ml
System Monitoring Compounds						
1) SA Tetrachlo...	4.120	3.495	889467	834326	25.404	23.179
2) SA Decachlor...	9.577	8.350	1014592	813292	19.071	20.170
Target Compounds						
3) L1 AR-1016-1	5.282	0.000	1434	0	0.894	N.D. #
4) L1 AR-1016-2	5.305	0.000	1996	0	0.834	N.D. #
5) L1 AR-1016-3	5.349	0.000	905	0	0.607	N.D. #
6) L1 AR-1016-4	5.443	0.000	5826	0	4.816	N.D. #
7) L1 AR-1016-5	5.731	0.000	1350	0	1.051	N.D. #
8) L2 AR-1221-1	4.333	0.000	1201	0	2.836	N.D. #
9) L2 AR-1221-2	4.422	0.000	20943	0	64.480	N.D. #
10) L2 AR-1221-3	4.493	0.000	16083	0	15.290	N.D. #
11) L3 AR-1232-1	4.493	0.000	16083	0	12.903	N.D. #
12) L3 AR-1232-2	5.017	0.000	2084	0	2.950	N.D. #
13) L3 AR-1232-3	5.305	0.000	1996	0	1.303	N.D. #
14) L3 AR-1232-4	5.526	0.000	577	0	0.738	N.D. #
15) L3 AR-1232-5	5.575	0.000	2530	0	4.209	N.D. #
16) L4 AR-1242-1	5.305	0.000	1996	0	1.572	N.D. #
17) L4 AR-1242-2	5.305	0.000	1996	0	1.076	N.D. #
18) L4 AR-1242-3	5.349	0.000	905	0	0.774	N.D. #
19) L4 AR-1242-4	5.526	0.000	577	0	0.597	N.D. #
20) L4 AR-1242-5	6.210	0.000	2780	0	2.212	N.D. #
21) L5 AR-1248-1	5.282	0.000	1434	0	1.430	N.D. #
22) L5 AR-1248-2	5.526	0.000	577	0	0.398	N.D. #
23) L5 AR-1248-3	5.684	0.000	1523	0	0.916	N.D. #
24) L5 AR-1248-4	6.140	0.000	2318	0	1.134	N.D. #
25) L5 AR-1248-5	6.210	0.000	2780	0	1.402	N.D. #
26) L6 AR-1254-1	6.111	0.000	6841	0	3.279	N.D. #
27) L6 AR-1254-2	6.326	0.000	2144	0	0.643	N.D. #
28) L6 AR-1254-3	6.690	0.000	3896	0	1.098	N.D. #
29) L6 AR-1254-4	6.969	0.000	4131	0	1.402	N.D. #
30) L6 AR-1254-5	7.386	0.000	13839	0	4.475	N.D. #
31) L7 AR-1260-1	6.817	0.000	2217	0	0.822	N.D. #
32) L7 AR-1260-2	7.100	0.000	9224	0	2.486	N.D. #
33) L7 AR-1260-3	7.456	0.000	12165	0	3.713	N.D. #
34) L7 AR-1260-4	7.688	0.000	21787	0	7.094	N.D. #
35) L7 AR-1260-5	7.992	0.000	118353	0	16.714	N.D. #
36) L8 AR-1262-1	7.478	0.000	3180	0	0.655	N.D. #
37) L8 AR-1262-2	8.077	0.000	112760	0	14.614	N.D. #
38) L8 AR-1262-3	8.315	0.000	195623	0	38.340	N.D. #
39) L8 AR-1262-4	8.333	0.000	41433	0	10.749	N.D. #
40) L8 AR-1262-5	8.948	0.000	22296	0	8.687	N.D. #
41) L9 AR-1268-1	8.315	0.000	195623	0	20.787	N.D. #

Data Path : Z:\pestpcbsrv\HPCHEM1\ECD\_0\Data\P0083019\  
 Data File : P0060128.D  
 Signal(s) : Signal #1: ECD1A.CH Signal #2: ECD2B.CH  
 Acq On : 31 Aug 2019 1:01  
 Operator : SM/AJ  
 Sample : K4619-15  
 Misc :  
 ALS Vial : 51 Sample Multiplier: 1

Instrument :  
 ECD\_0  
 ClientSampleId :  
 TP5-COMP

Integration File signal 1: autoint1.e  
 Integration File signal 2: autoint2.e  
 Quant Time: Aug 31 01:27:27 2019  
 Quant Method : Z:\pestpcbsrv\HPCHEM1\ECD\_0\methods\P0081719.M  
 Quant Title : GC EXTRACTABLES  
 QLast Update : Fri Aug 30 18:12:46 2019  
 Response via : Initial Calibration  
 Integrator: ChemStation 6890 Scale Mode: Small noise peaks clipped

Volume Inj. : 2 µl  
 Signal #1 Phase : ZB-MR1 Signal #2 Phase: ZB-MR2  
 Signal #1 Info : 30Mx0.32mmx 0.50µ Signal #2 Info : 30M x 0.32mm x 0.25µm

	Compound	RT#1	RT#2	Resp#1	Resp#2	ng/ml	ng/ml
42)	L9 AR-1268-2	8.333	0.000	41433	0	5.256	N.D. #
43)	L9 AR-1268-3	8.615	0.000	84824	0	12.034	N.D. #
44)	L9 AR-1268-4	8.948	0.000	22296	0	8.020	N.D. #

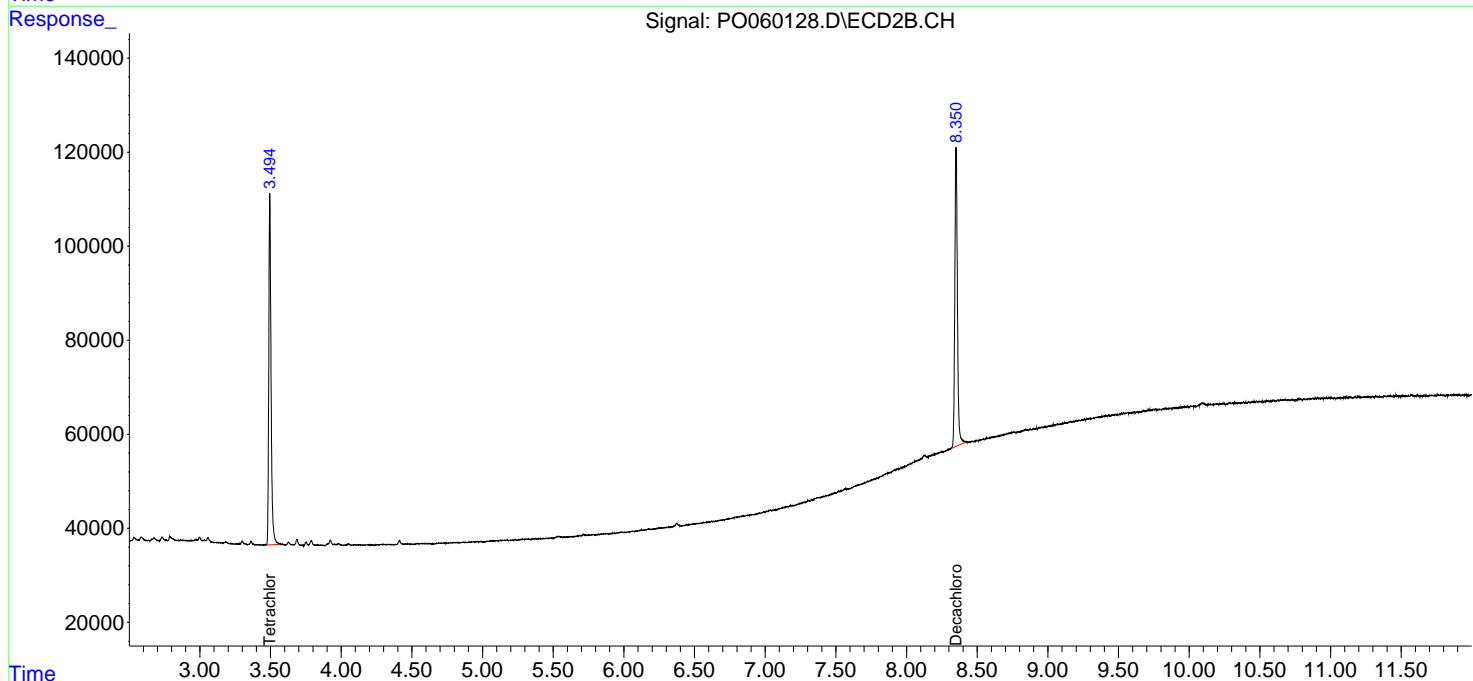
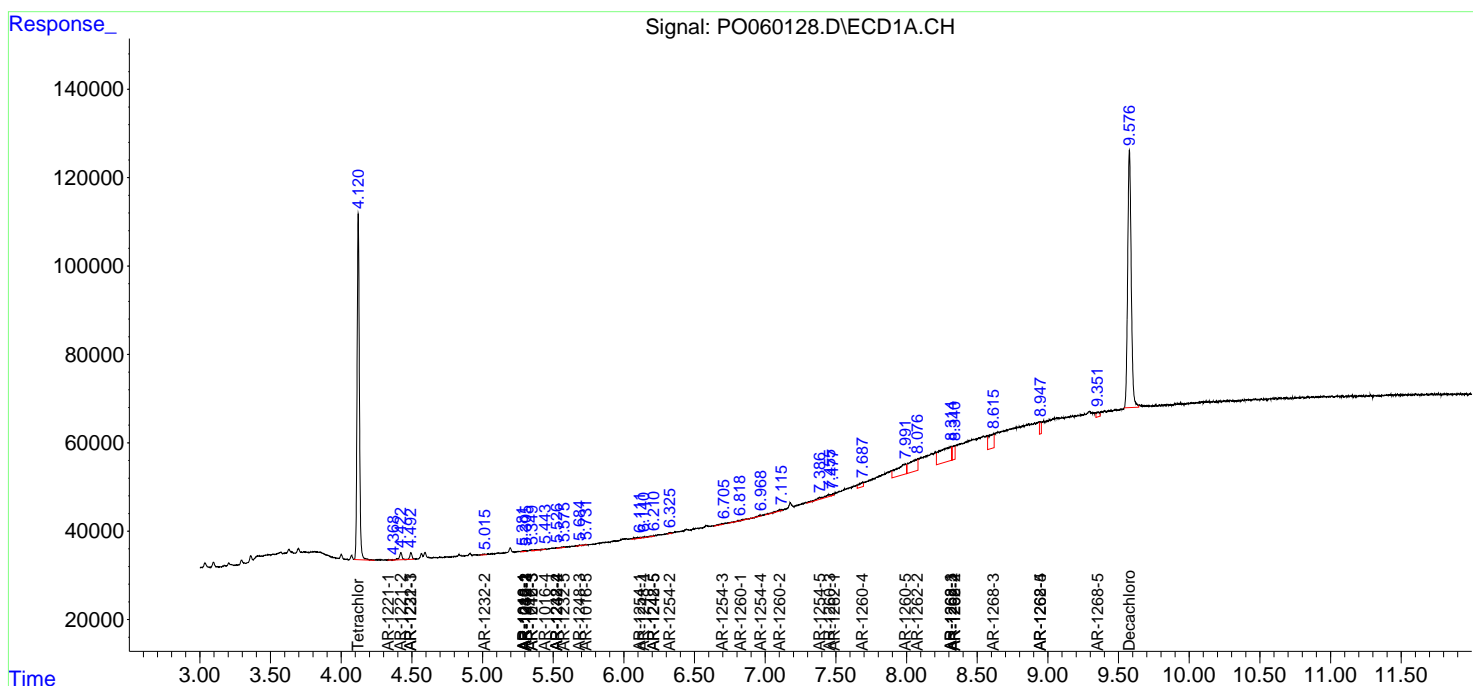
(f)=RT Delta > 1/2 Window (#)=Amounts differ by > 25% (m)=manual int.

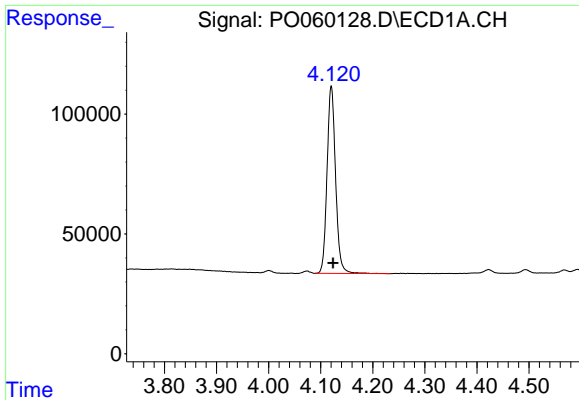
Data Path : Z:\pestpcbsrv\HPCHEM1\ECD\_O\Data\P0083019\  
 Data File : P0060128.D  
 Signal(s) : Signal #1: ECD1A.CH Signal #2: ECD2B.CH  
 Acq On : 31 Aug 2019 1:01  
 Operator : SM/AJ  
 Sample : K4619-15  
 Misc :  
 ALS Vial : 51 Sample Multiplier: 1

**Instrument :**  
 ECD\_O  
**Client Sampled :**  
 TP5-COMP

Integration File signal 1: autoint1.e  
 Integration File signal 2: autoint2.e  
 Quant Time: Aug 31 01:27:27 2019  
 Quant Method : Z:\pestpcbsrv\HPCHEM1\ECD\_O\methods\P0081719.M  
 Quant Title : GC EXTRACTABLES  
 QLast Update : Fri Aug 30 18:12:46 2019  
 Response via : Initial Calibration  
 Integrator: ChemStation 6890 Scale Mode: Small noise peaks clipped

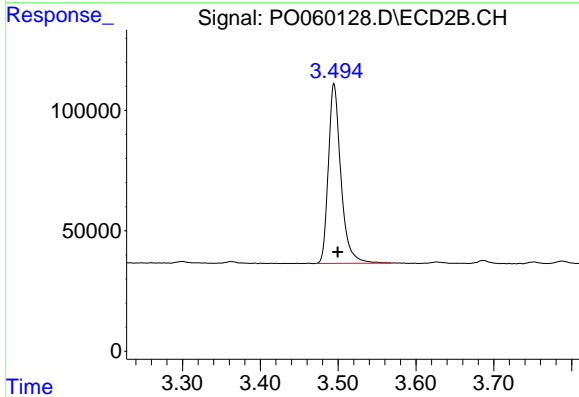
Volume Inj. : 2 µl  
 Signal #1 Phase : ZB-MR1 Signal #2 Phase: ZB-MR2  
 Signal #1 Info : 30Mx0.32mmx 0.50µ Signal #2 Info : 30M x 0.32mm x 0.25µm



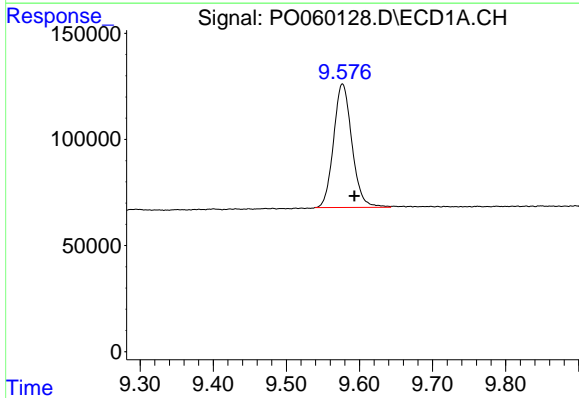


#1 Tetrachloro-m-xylene  
 R.T.: 4.120 min  
 Delta R.T.: -0.004 min  
 Response: 889467  
 Conc: 25.40 ng/ml

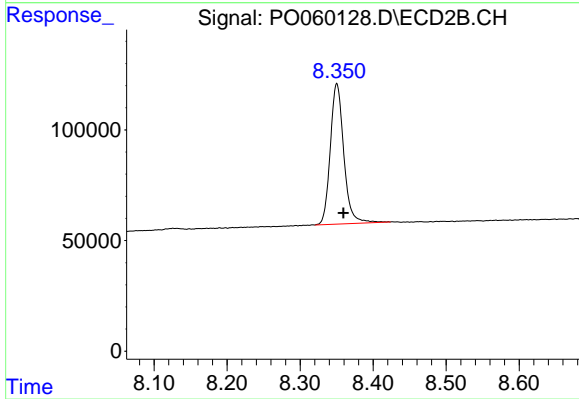
Instrument :  
 ECD\_O  
 ClientSampled :  
 TP5-COMP



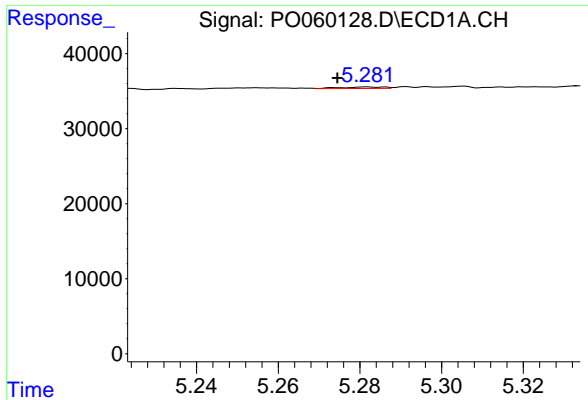
#1 Tetrachloro-m-xylene  
 R.T.: 3.495 min  
 Delta R.T.: -0.005 min  
 Response: 834326  
 Conc: 23.18 ng/ml



#2 Decachlorobiphenyl  
 R.T.: 9.577 min  
 Delta R.T.: -0.016 min  
 Response: 1014592  
 Conc: 19.07 ng/ml

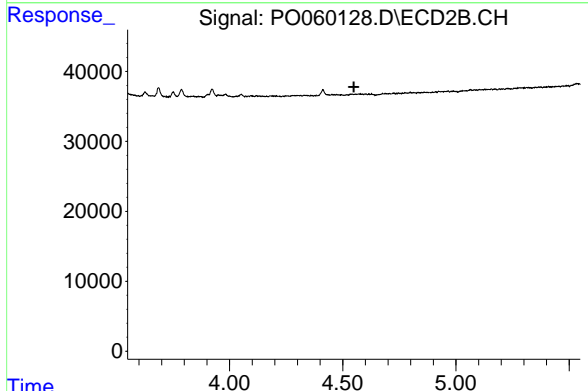


#2 Decachlorobiphenyl  
 R.T.: 8.350 min  
 Delta R.T.: -0.009 min  
 Response: 813292  
 Conc: 20.17 ng/ml

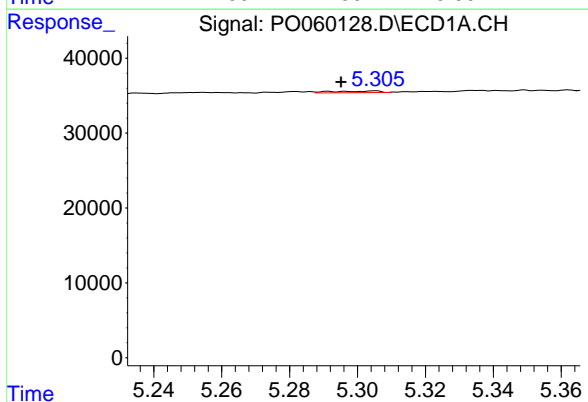


#3 AR-1016-1  
 R.T.: 5.282 min  
 Delta R.T.: 0.007 min  
 Response: 1434  
 Conc: 0.89 ng/ml

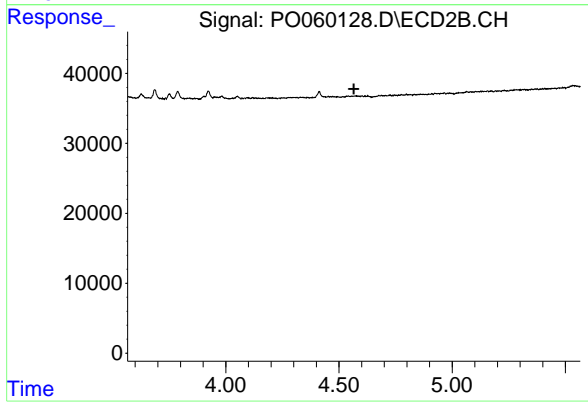
Instrument :  
 ECD\_O  
 ClientSampled :  
 TP5-COMP



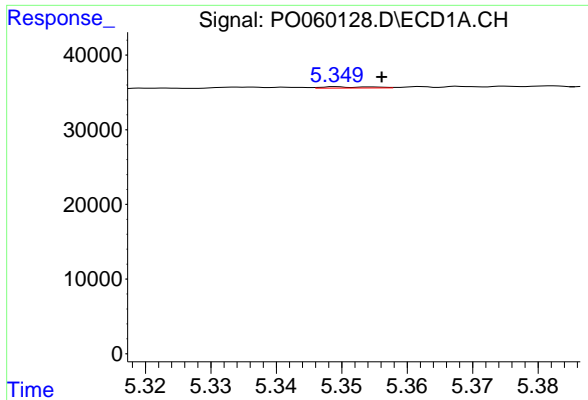
#3 AR-1016-1  
 R.T.: 0.000 min  
 Exp R.T. : 4.550 min  
 Response: 0  
 Conc: N.D.



#4 AR-1016-2  
 R.T.: 5.305 min  
 Delta R.T.: 0.010 min  
 Response: 1996  
 Conc: 0.83 ng/ml

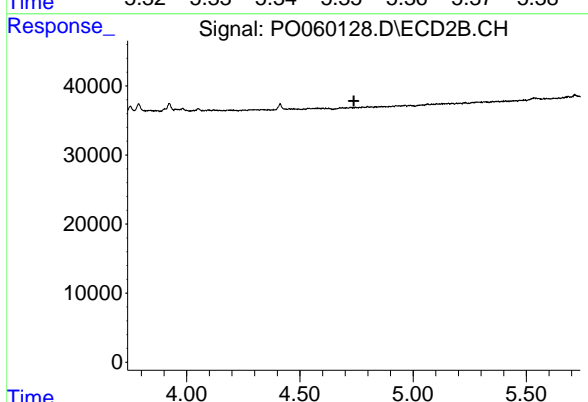


#4 AR-1016-2  
 R.T.: 0.000 min  
 Exp R.T. : 4.566 min  
 Response: 0  
 Conc: N.D.

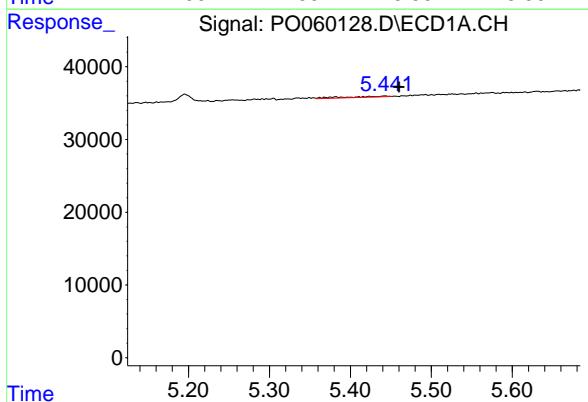


#5 AR-1016-3  
 R.T.: 5.349 min  
 Delta R.T.: -0.007 min  
 Response: 905  
 Conc: 0.61 ng/ml

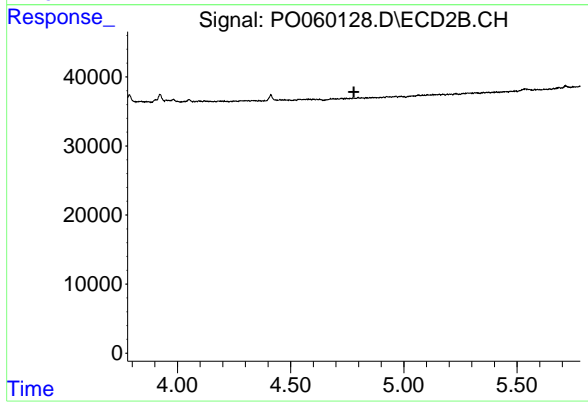
Instrument :  
 ECD\_O  
 ClientSampleId :  
 TP5-COMP



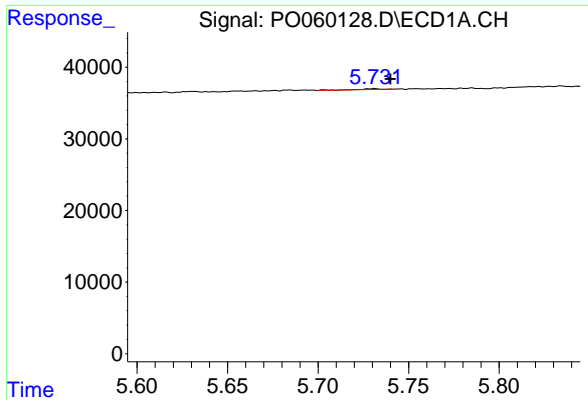
#5 AR-1016-3  
 R.T.: 0.000 min  
 Exp R.T. : 4.738 min  
 Response: 0  
 Conc: N.D.



#6 AR-1016-4  
 R.T.: 5.443 min  
 Delta R.T.: -0.017 min  
 Response: 5826  
 Conc: 4.82 ng/ml

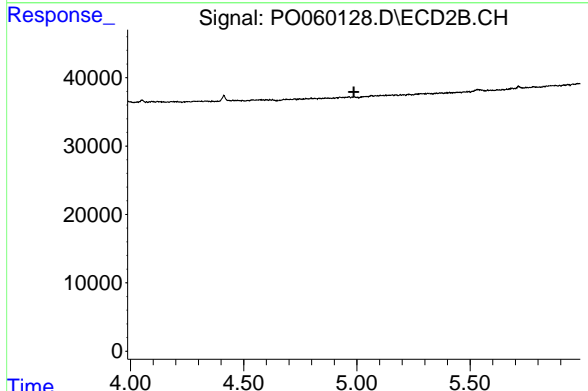


#6 AR-1016-4  
 R.T.: 0.000 min  
 Exp R.T. : 4.779 min  
 Response: 0  
 Conc: N.D.

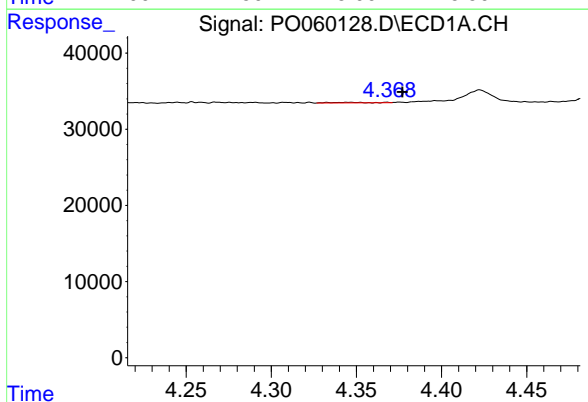


#7 AR-1016-5  
 R.T.: 5.731 min  
 Delta R.T.: -0.009 min  
 Response: 1350  
 Conc: 1.05 ng/ml

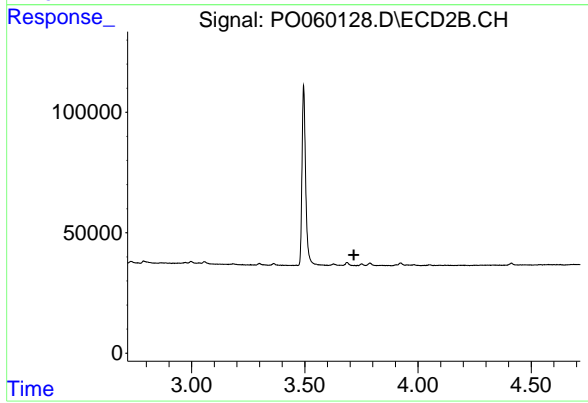
Instrument :  
 ECD\_O  
 ClientSampled :  
 TP5-COMP



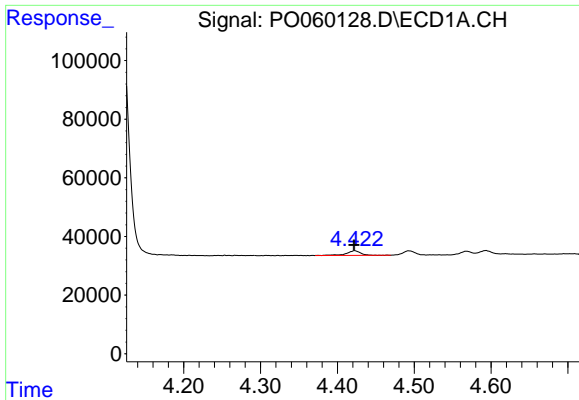
#7 AR-1016-5  
 R.T.: 0.000 min  
 Exp R.T. : 4.987 min  
 Response: 0  
 Conc: N.D.



#8 AR-1221-1  
 R.T.: 4.333 min  
 Delta R.T.: -0.044 min  
 Response: 1201  
 Conc: 2.84 ng/ml

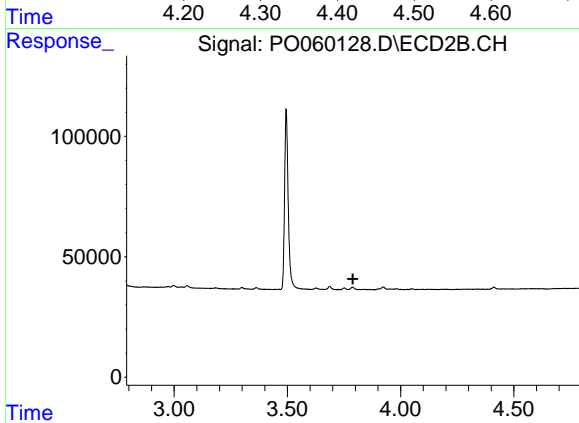


#8 AR-1221-1  
 R.T.: 0.000 min  
 Exp R.T. : 3.717 min  
 Response: 0  
 Conc: N.D.

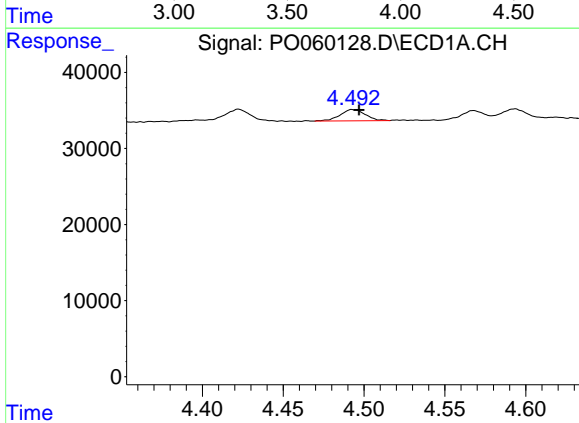


#9 AR-1221-2  
 R.T.: 4.422 min  
 Delta R.T.: 0.000 min  
 Response: 20943  
 Conc: 64.48 ng/ml

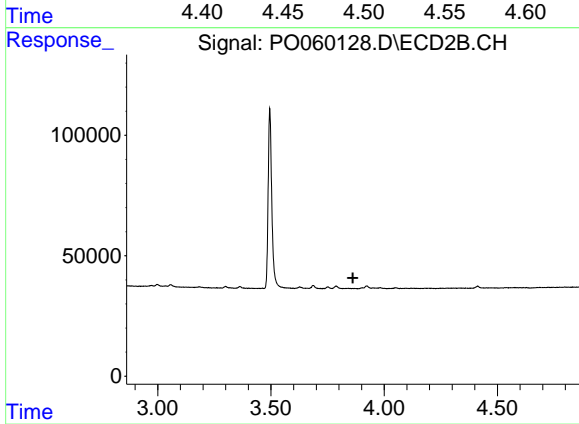
Instrument :  
 ECD\_O  
 ClientSampled :  
 TP5-COMP



#9 AR-1221-2  
 R.T.: 0.000 min  
 Exp R.T. : 3.789 min  
 Response: 0  
 Conc: N.D.

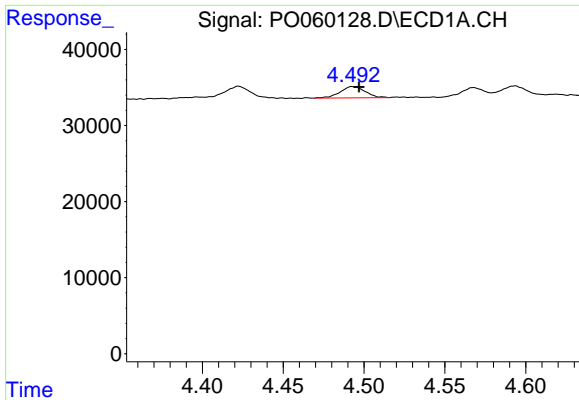


#10 AR-1221-3  
 R.T.: 4.493 min  
 Delta R.T.: -0.004 min  
 Response: 16083  
 Conc: 15.29 ng/ml



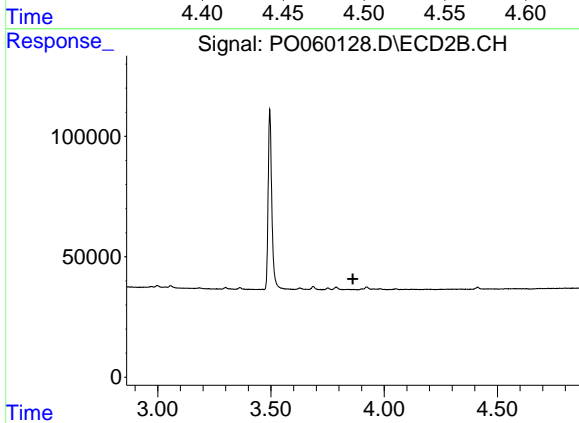
#10 AR-1221-3  
 R.T.: 0.000 min  
 Exp R.T. : 3.862 min  
 Response: 0  
 Conc: N.D.



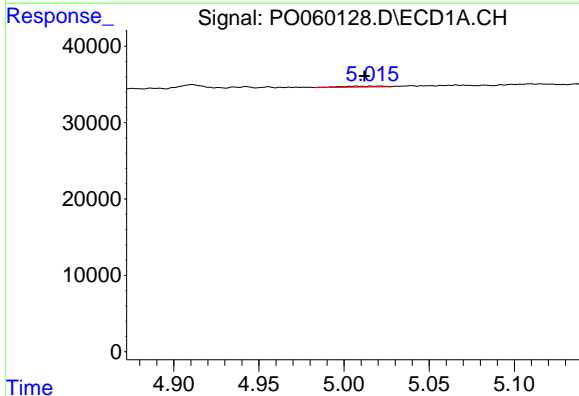


#11 AR-1232-1  
 R.T.: 4.493 min  
 Delta R.T.: -0.004 min  
 Response: 16083  
 Conc: 12.90 ng/ml

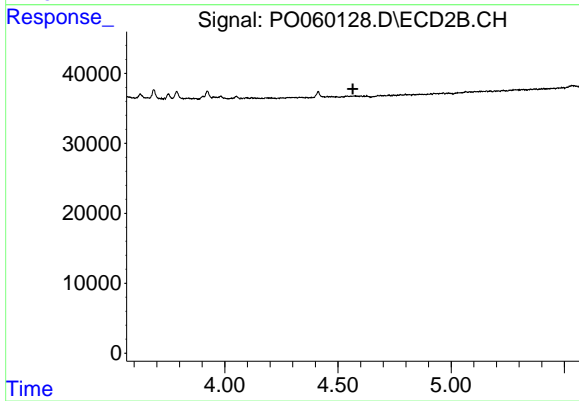
Instrument :  
 ECD\_O  
 ClientSampled :  
 TP5-COMP



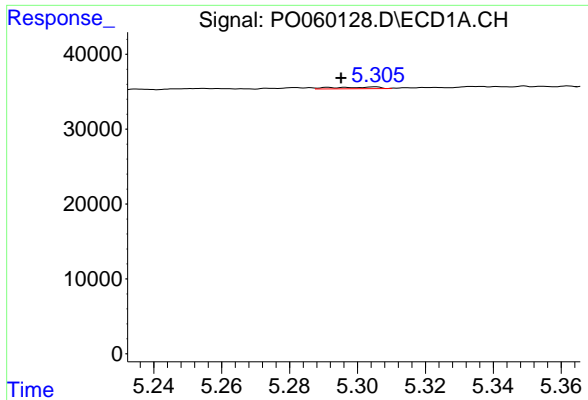
#11 AR-1232-1  
 R.T.: 0.000 min  
 Exp R.T. : 3.862 min  
 Response: 0  
 Conc: N.D.



#12 AR-1232-2  
 R.T.: 5.017 min  
 Delta R.T.: 0.005 min  
 Response: 2084  
 Conc: 2.95 ng/ml

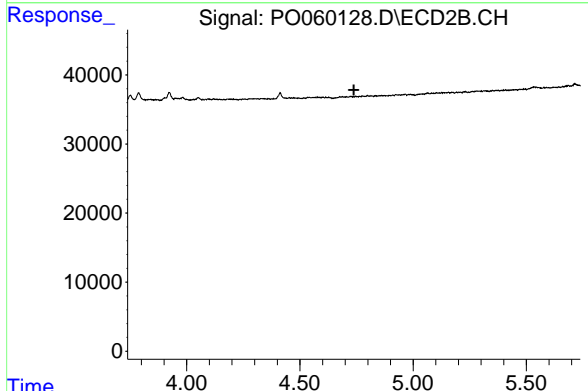


#12 AR-1232-2  
 R.T.: 0.000 min  
 Exp R.T. : 4.566 min  
 Response: 0  
 Conc: N.D.

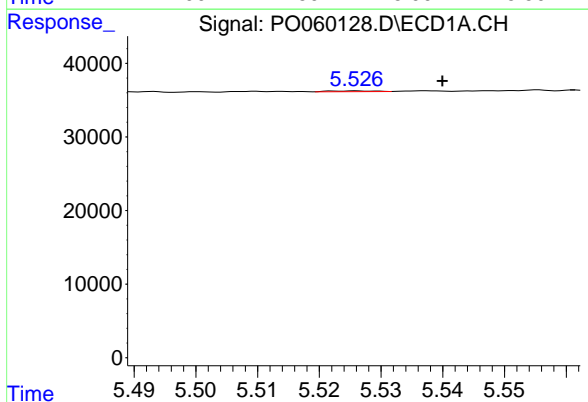


#13 AR-1232-3  
 R.T.: 5.305 min  
 Delta R.T.: 0.010 min  
 Response: 1996  
 Conc: 1.30 ng/ml

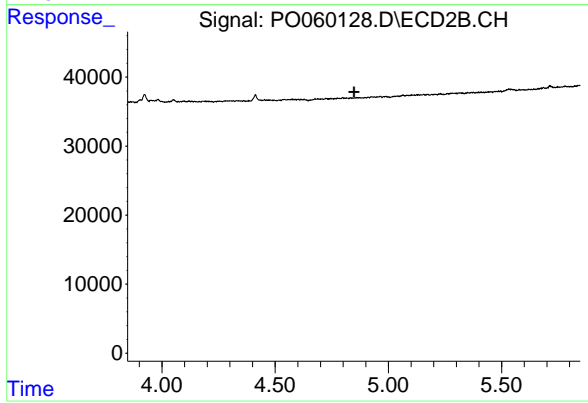
Instrument :  
 ECD\_O  
 ClientSampleId :  
 TP5-COMP



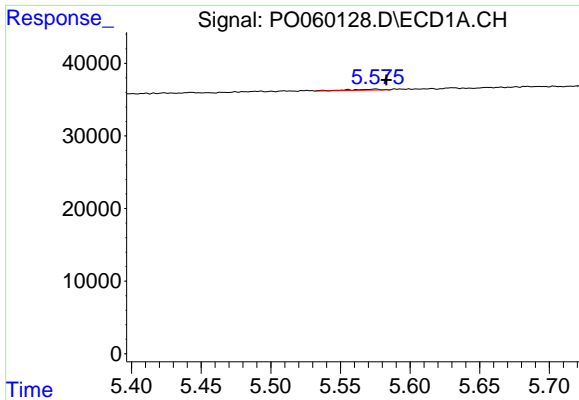
#13 AR-1232-3  
 R.T.: 0.000 min  
 Exp R.T. : 4.738 min  
 Response: 0  
 Conc: N.D.



#14 AR-1232-4  
 R.T.: 5.526 min  
 Delta R.T.: -0.014 min  
 Response: 577  
 Conc: 0.74 ng/ml



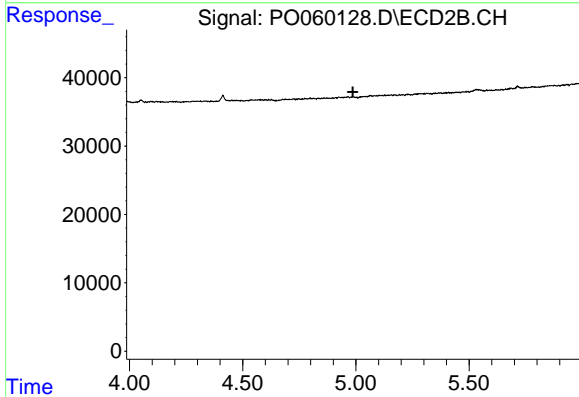
#14 AR-1232-4  
 R.T.: 0.000 min  
 Exp R.T. : 4.848 min  
 Response: 0  
 Conc: N.D.



#15 AR-1232-5

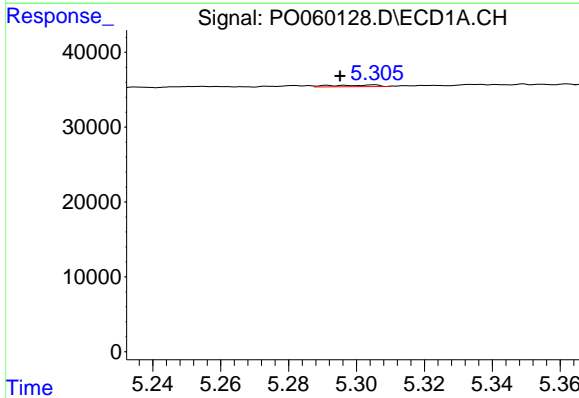
R.T.: 5.575 min  
 Delta R.T.: -0.008 min  
 Response: 2530  
 Conc: 4.21 ng/ml

Instrument :  
 ECD\_O  
 ClientSampleId :  
 TP5-COMP



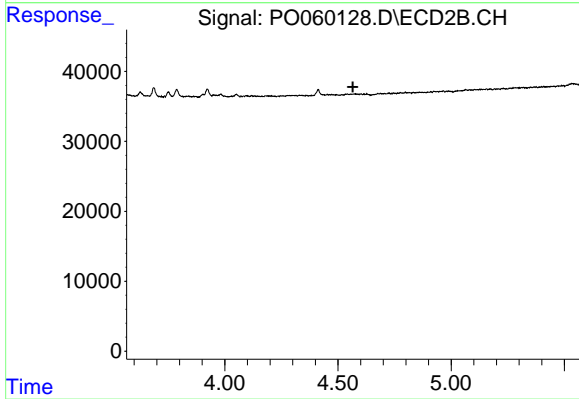
#15 AR-1232-5

R.T.: 0.000 min  
 Exp R.T. : 4.987 min  
 Response: 0  
 Conc: N.D.



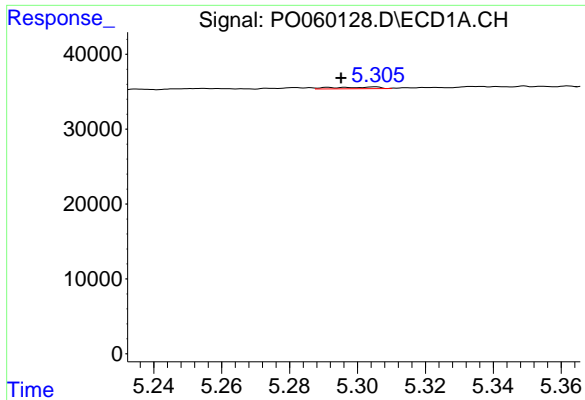
#16 AR-1242-1

R.T.: 5.305 min  
 Delta R.T.: 0.010 min  
 Response: 1996  
 Conc: 1.57 ng/ml



#16 AR-1242-1

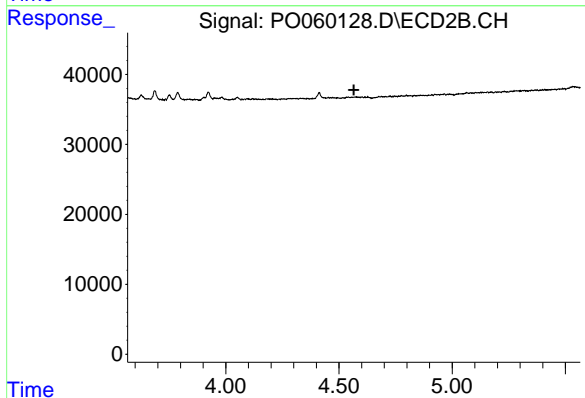
R.T.: 0.000 min  
 Exp R.T. : 4.566 min  
 Response: 0  
 Conc: N.D.



#17 AR-1242-2

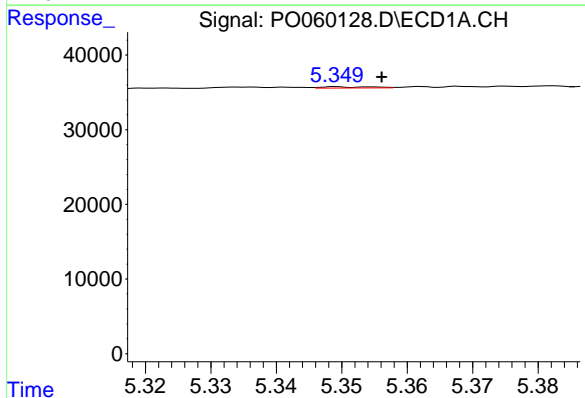
R.T.: 5.305 min  
 Delta R.T.: 0.010 min  
 Response: 1996  
 Conc: 1.08 ng/ml

Instrument :  
 ECD\_O  
 ClientSampled :  
 TP5-COMP



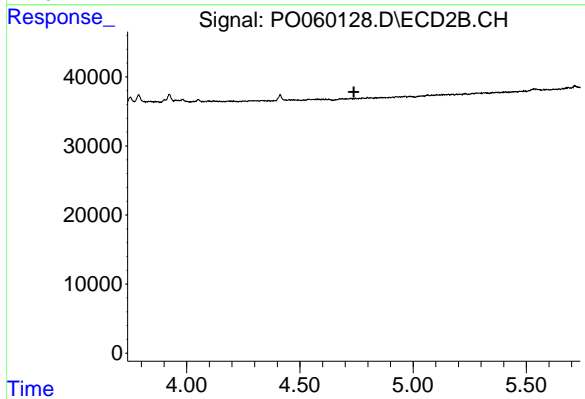
#17 AR-1242-2

R.T.: 0.000 min  
 Exp R.T. : 4.566 min  
 Response: 0  
 Conc: N.D.



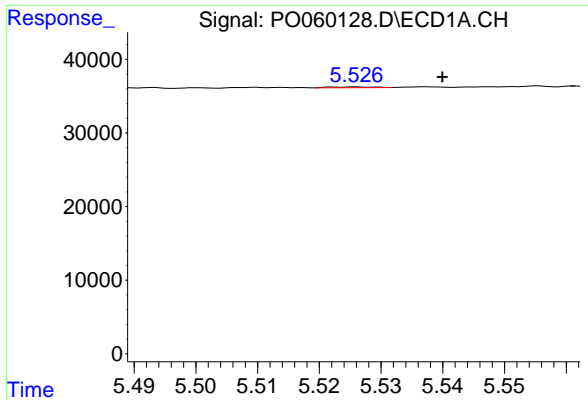
#18 AR-1242-3

R.T.: 5.349 min  
 Delta R.T.: -0.007 min  
 Response: 905  
 Conc: 0.77 ng/ml



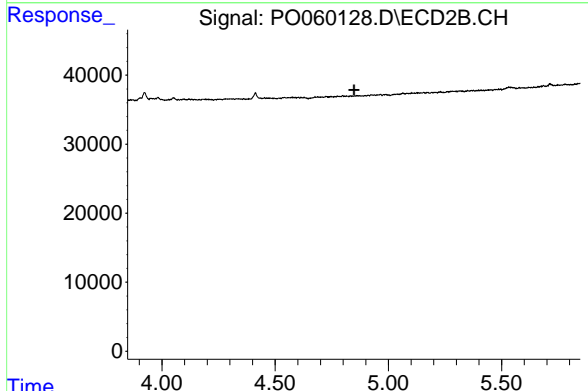
#18 AR-1242-3

R.T.: 0.000 min  
 Exp R.T. : 4.738 min  
 Response: 0  
 Conc: N.D.

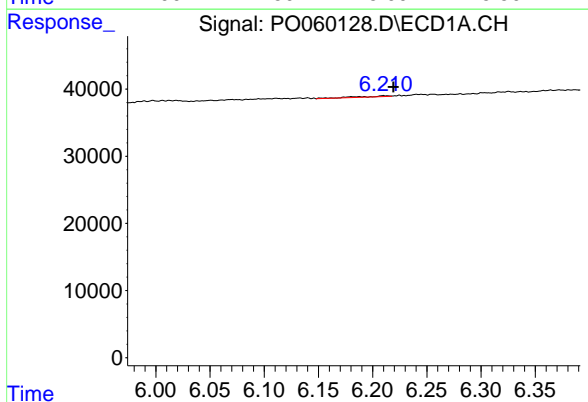


#19 AR-1242-4  
 R.T.: 5.526 min  
 Delta R.T.: -0.014 min  
 Response: 577  
 Conc: 0.60 ng/ml

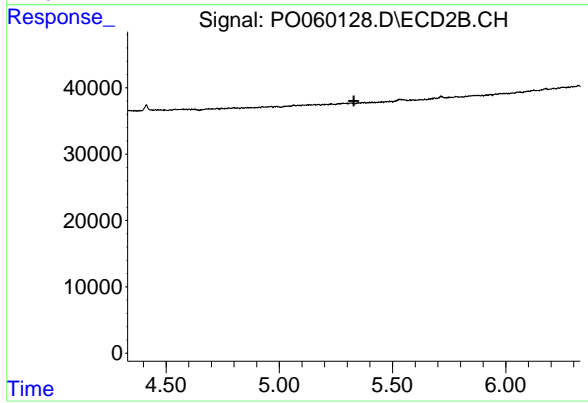
Instrument :  
 ECD\_O  
 ClientSampled :  
 TP5-COMP



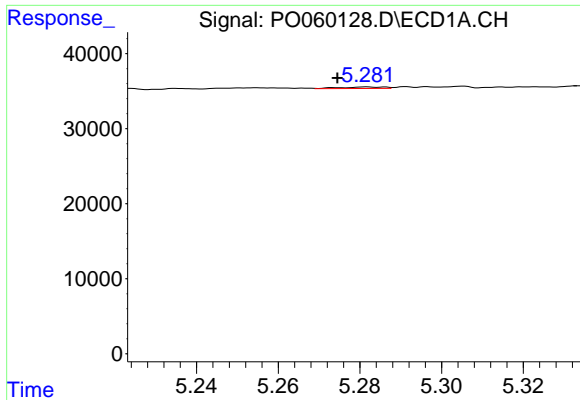
#19 AR-1242-4  
 R.T.: 0.000 min  
 Exp R.T. : 4.848 min  
 Response: 0  
 Conc: N.D.



#20 AR-1242-5  
 R.T.: 6.210 min  
 Delta R.T.: -0.009 min  
 Response: 2780  
 Conc: 2.21 ng/ml



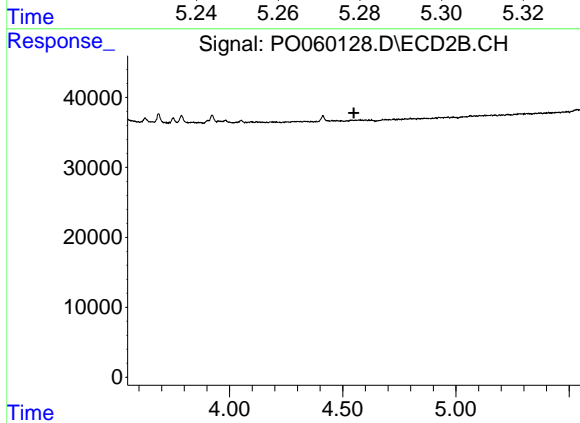
#20 AR-1242-5  
 R.T.: 0.000 min  
 Exp R.T. : 5.330 min  
 Response: 0  
 Conc: N.D.



#21 AR-1248-1

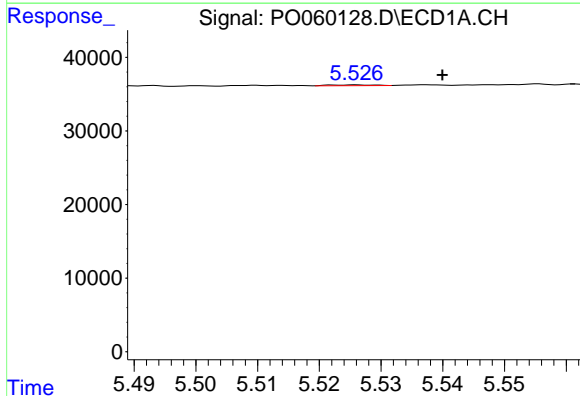
R.T.: 5.282 min  
 Delta R.T.: 0.007 min  
 Response: 1434  
 Conc: 1.43 ng/ml

Instrument :  
 ECD\_O  
 ClientSampleId :  
 TP5-COMP



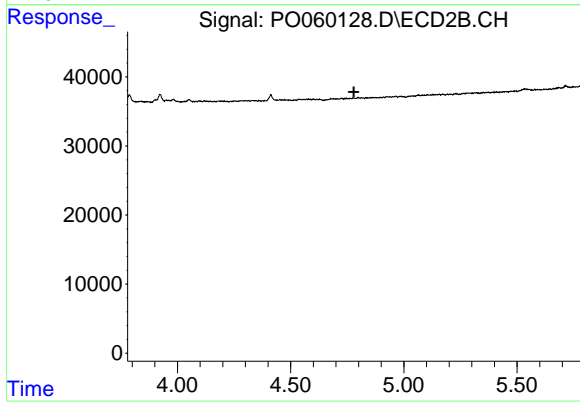
#21 AR-1248-1

R.T.: 0.000 min  
 Exp R.T. : 4.550 min  
 Response: 0  
 Conc: N.D.



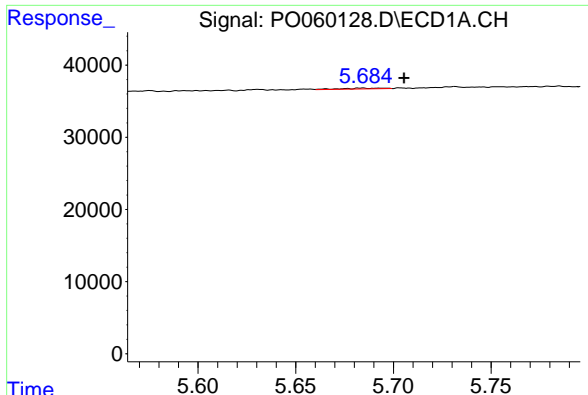
#22 AR-1248-2

R.T.: 5.526 min  
 Delta R.T.: -0.014 min  
 Response: 577  
 Conc: 0.40 ng/ml



#22 AR-1248-2

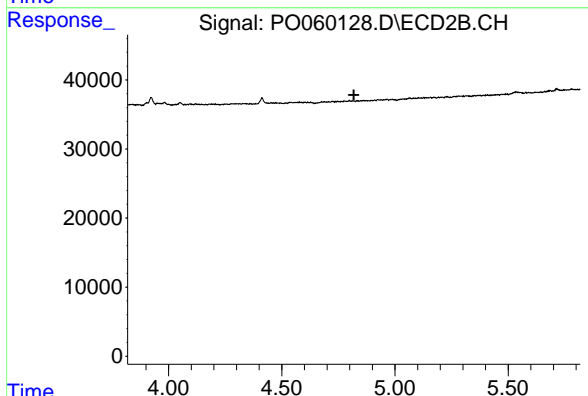
R.T.: 0.000 min  
 Exp R.T. : 4.779 min  
 Response: 0  
 Conc: N.D.



#23 AR-1248-3

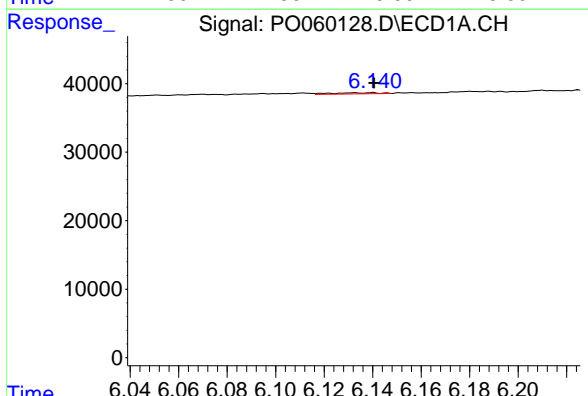
R.T.: 5.684 min  
 Delta R.T.: -0.022 min  
 Response: 1523  
 Conc: 0.92 ng/ml

Instrument :  
 ECD\_O  
 ClientSampled :  
 TP5-COMP



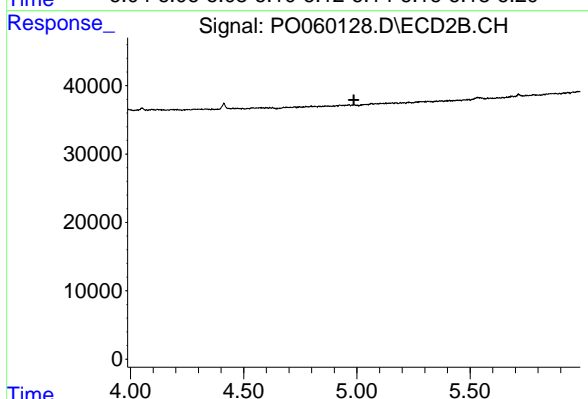
#23 AR-1248-3

R.T.: 0.000 min  
 Exp R.T. : 4.819 min  
 Response: 0  
 Conc: N.D.



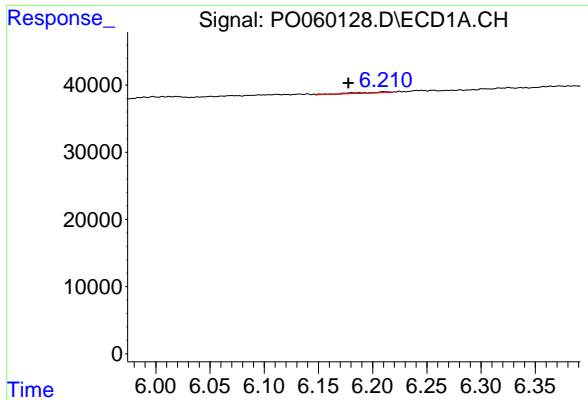
#24 AR-1248-4

R.T.: 6.140 min  
 Delta R.T.: 0.000 min  
 Response: 2318  
 Conc: 1.13 ng/ml



#24 AR-1248-4

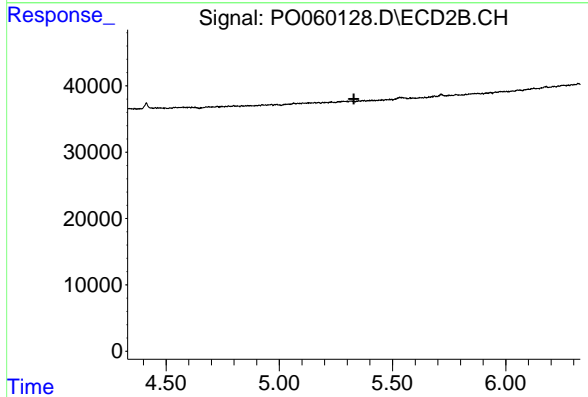
R.T.: 0.000 min  
 Exp R.T. : 4.987 min  
 Response: 0  
 Conc: N.D.



#25 AR-1248-5

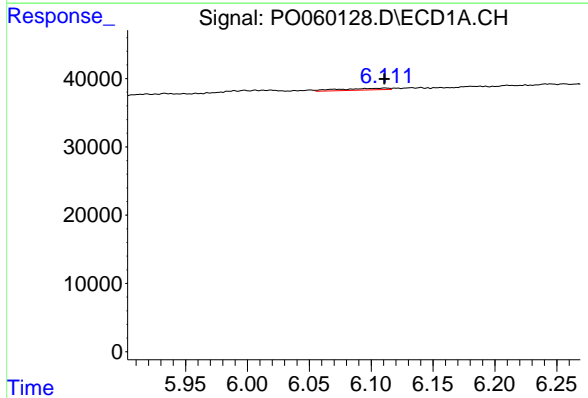
R.T.: 6.210 min  
 Delta R.T.: 0.032 min  
 Response: 2780  
 Conc: 1.40 ng/ml

Instrument :  
 ECD\_O  
 ClientSampleId :  
 TP5-COMP



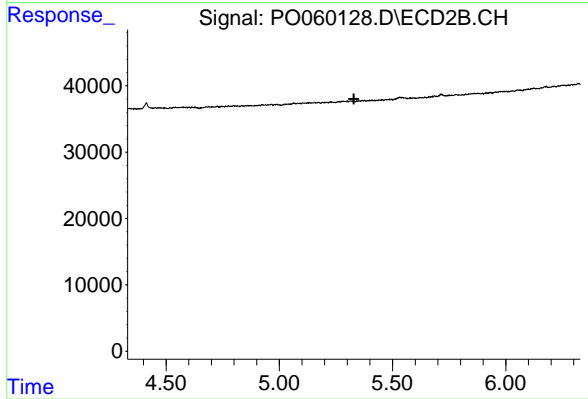
#25 AR-1248-5

R.T.: 0.000 min  
 Exp R.T. : 5.330 min  
 Response: 0  
 Conc: N.D.



#26 AR-1254-1

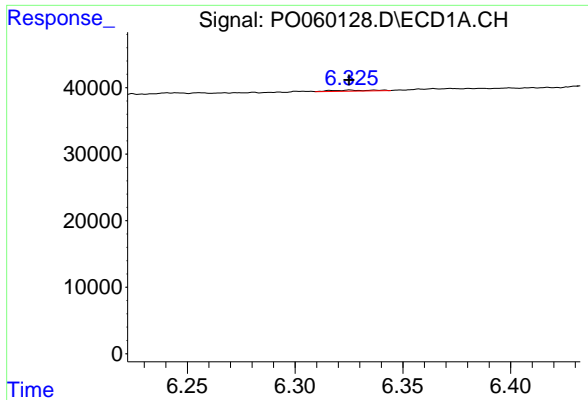
R.T.: 6.111 min  
 Delta R.T.: 0.000 min  
 Response: 6841  
 Conc: 3.28 ng/ml



#26 AR-1254-1

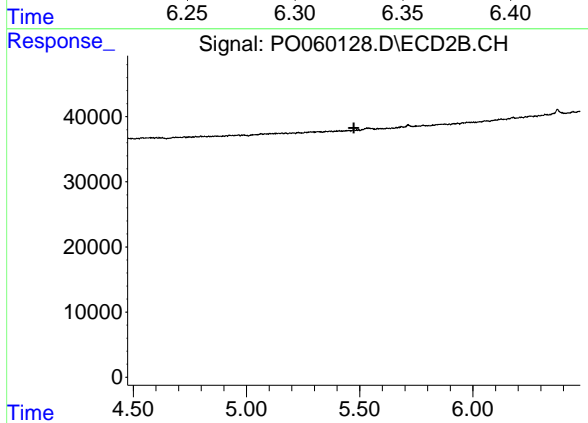
R.T.: 0.000 min  
 Exp R.T. : 5.330 min  
 Response: 0  
 Conc: N.D.



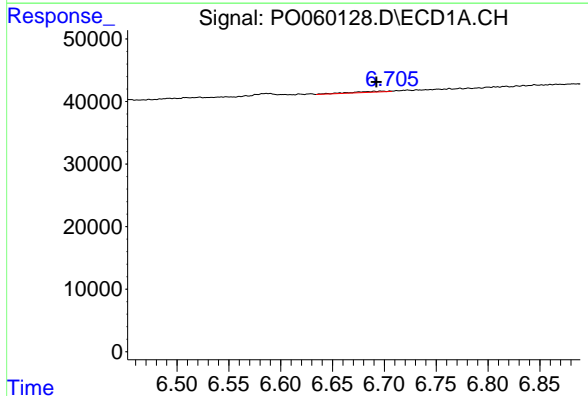


#27 AR-1254-2  
 R.T.: 6.326 min  
 Delta R.T.: 0.000 min  
 Response: 2144  
 Conc: 0.64 ng/ml

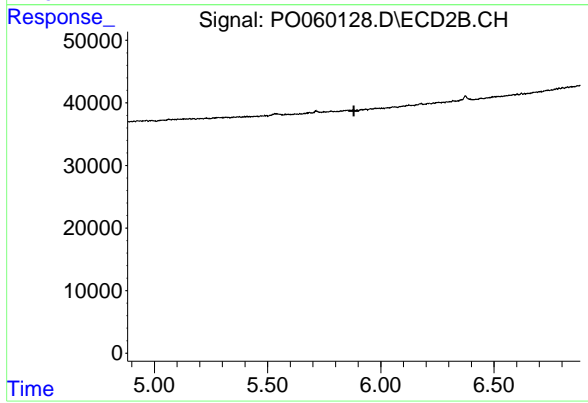
Instrument :  
 ECD\_O  
 ClientSampleId :  
 TP5-COMP



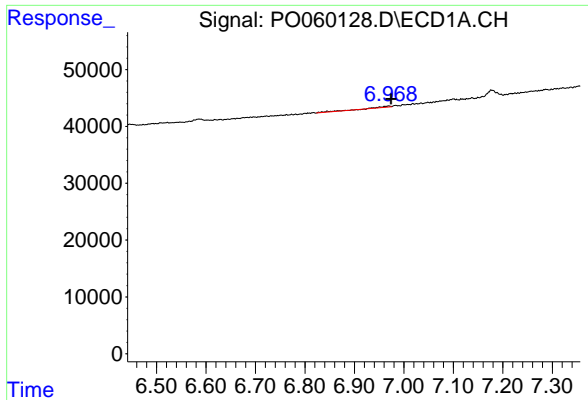
#27 AR-1254-2  
 R.T.: 0.000 min  
 Exp R.T. : 5.474 min  
 Response: 0  
 Conc: N.D.



#28 AR-1254-3  
 R.T.: 6.690 min  
 Delta R.T.: -0.002 min  
 Response: 3896  
 Conc: 1.10 ng/ml



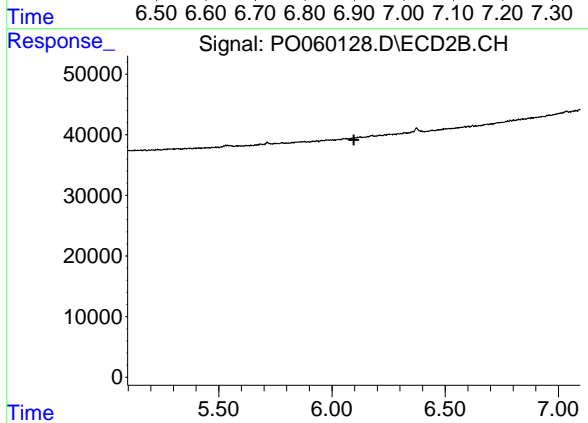
#28 AR-1254-3  
 R.T.: 0.000 min  
 Exp R.T. : 5.881 min  
 Response: 0  
 Conc: N.D.



#29 AR-1254-4

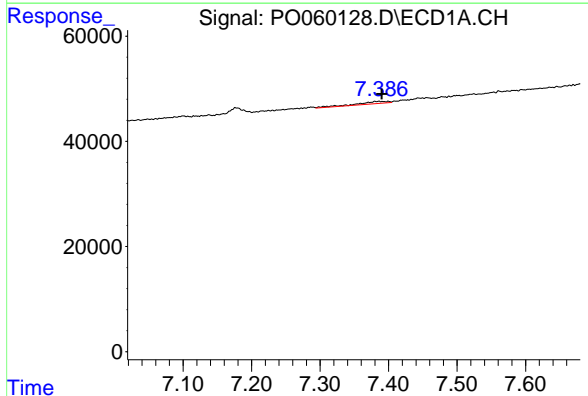
R.T.: 6.969 min  
 Delta R.T.: -0.005 min  
 Response: 4131  
 Conc: 1.40 ng/ml

Instrument :  
 ECD\_O  
 ClientSampled :  
 TP5-COMP



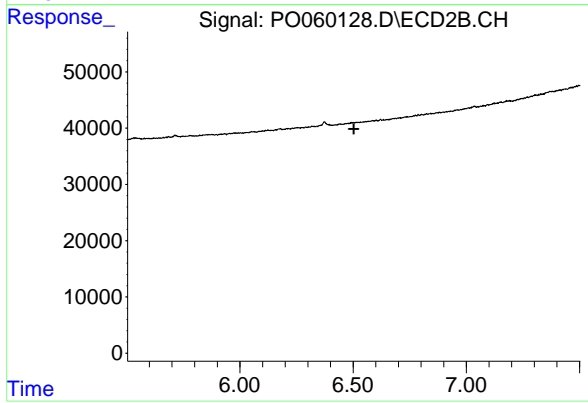
#29 AR-1254-4

R.T.: 0.000 min  
 Exp R.T. : 6.097 min  
 Response: 0  
 Conc: N.D.



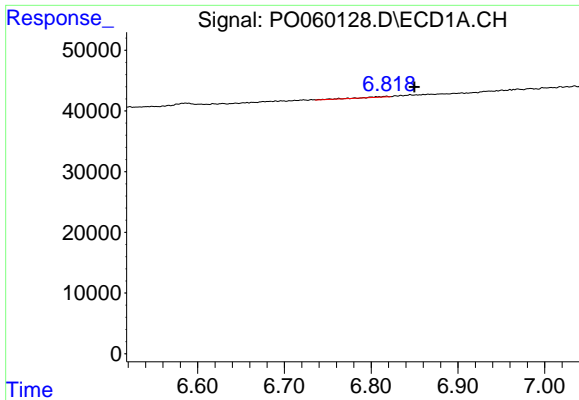
#30 AR-1254-5

R.T.: 7.386 min  
 Delta R.T.: -0.004 min  
 Response: 13839  
 Conc: 4.48 ng/ml



#30 AR-1254-5

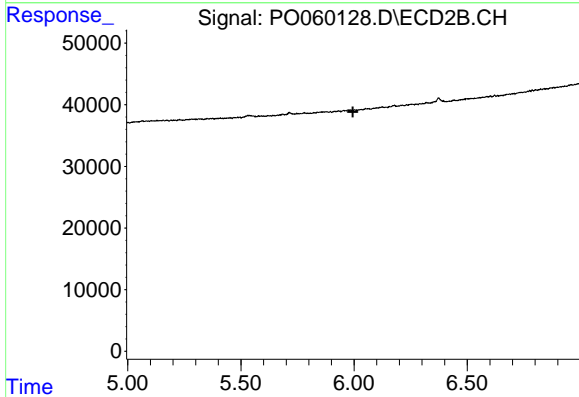
R.T.: 0.000 min  
 Exp R.T. : 6.503 min  
 Response: 0  
 Conc: N.D.



#31 AR-1260-1

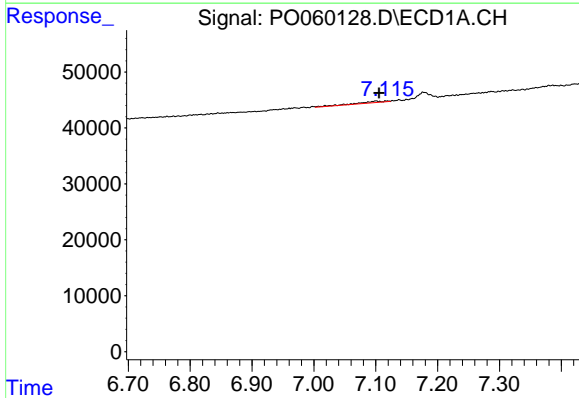
R.T.: 6.817 min  
 Delta R.T.: -0.032 min  
 Response: 2217  
 Conc: 0.82 ng/ml

Instrument :  
 ECD\_O  
 ClientSampleId :  
 TP5-COMP



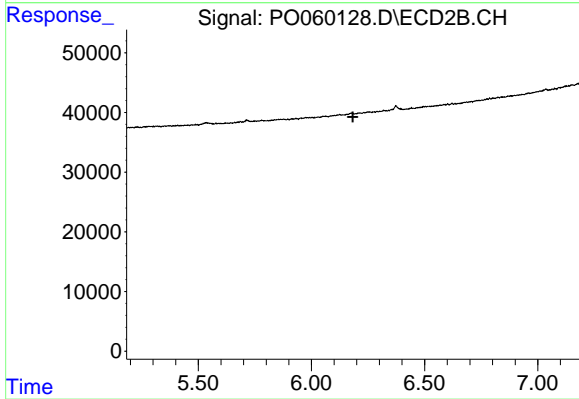
#31 AR-1260-1

R.T.: 0.000 min  
 Exp R.T. : 5.995 min  
 Response: 0  
 Conc: N.D.



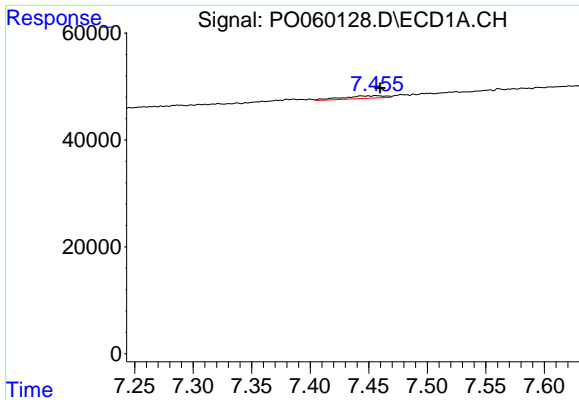
#32 AR-1260-2

R.T.: 7.100 min  
 Delta R.T.: -0.005 min  
 Response: 9224  
 Conc: 2.49 ng/ml



#32 AR-1260-2

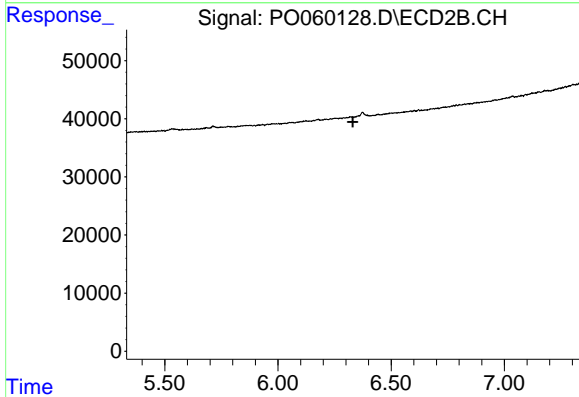
R.T.: 0.000 min  
 Exp R.T. : 6.183 min  
 Response: 0  
 Conc: N.D.



#33 AR-1260-3

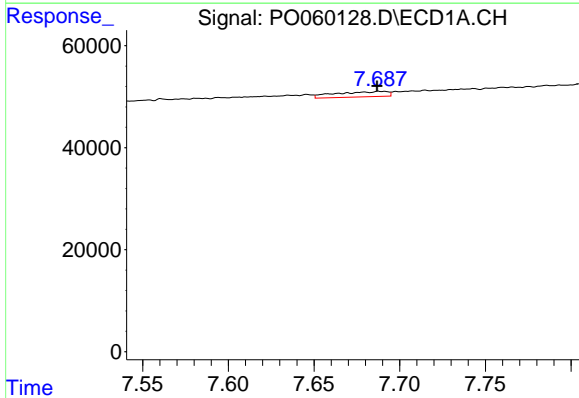
R.T.: 7.456 min  
 Delta R.T.: -0.004 min  
 Response: 12165  
 Conc: 3.71 ng/ml

Instrument :  
 ECD\_O  
 ClientSampled :  
 TP5-COMP



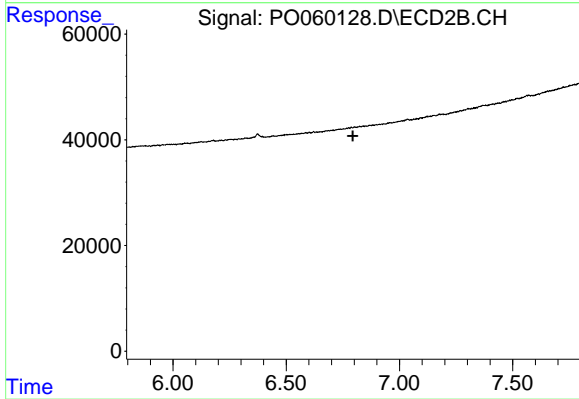
#33 AR-1260-3

R.T.: 0.000 min  
 Exp R.T. : 6.331 min  
 Response: 0  
 Conc: N.D.



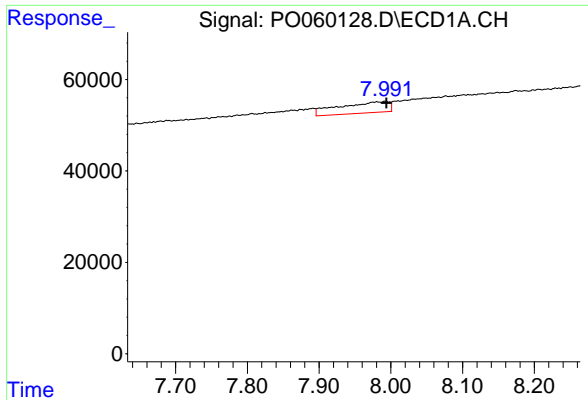
#34 AR-1260-4

R.T.: 7.688 min  
 Delta R.T.: 0.002 min  
 Response: 21787  
 Conc: 7.09 ng/ml



#34 AR-1260-4

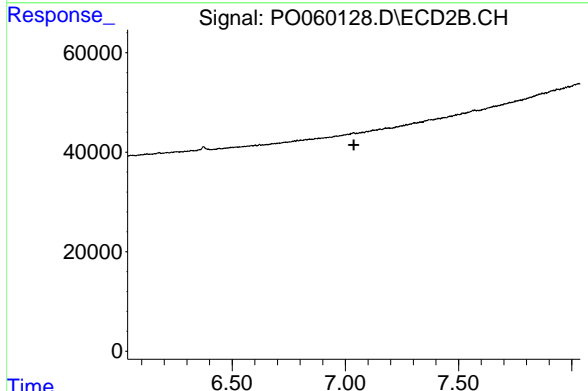
R.T.: 0.000 min  
 Exp R.T. : 6.794 min  
 Response: 0  
 Conc: N.D.



#35 AR-1260-5

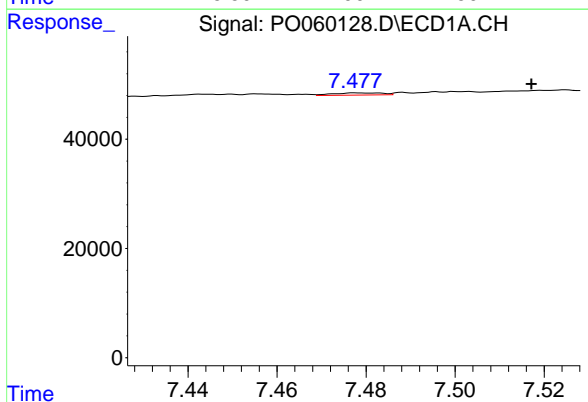
R.T.: 7.992 min  
 Delta R.T.: -0.002 min  
 Response: 118353  
 Conc: 16.71 ng/ml

Instrument :  
 ECD\_O  
 ClientSampleId :  
 TP5-COMP



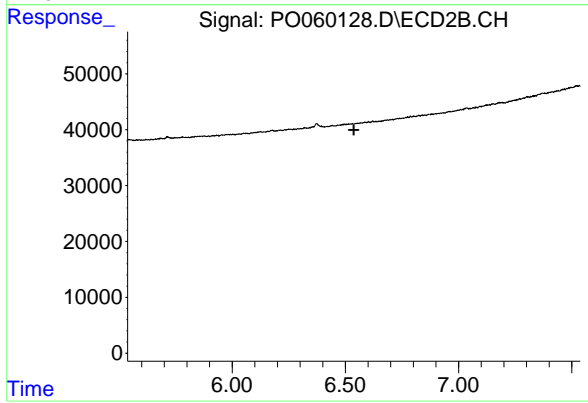
#35 AR-1260-5

R.T.: 0.000 min  
 Exp R.T. : 7.037 min  
 Response: 0  
 Conc: N.D.



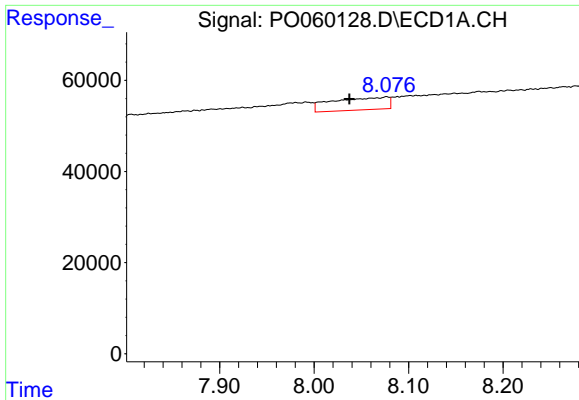
#36 AR-1262-1

R.T.: 7.478 min  
 Delta R.T.: -0.039 min  
 Response: 3180  
 Conc: 0.66 ng/ml



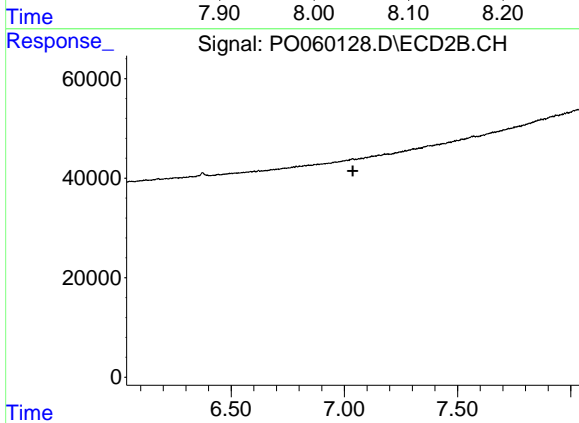
#36 AR-1262-1

R.T.: 0.000 min  
 Exp R.T. : 6.538 min  
 Response: 0  
 Conc: N.D.

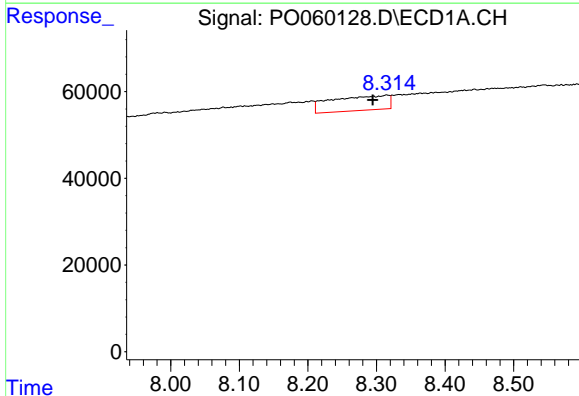


#37 AR-1262-2  
 R.T.: 8.077 min  
 Delta R.T.: 0.039 min  
 Response: 112760  
 Conc: 14.61 ng/ml

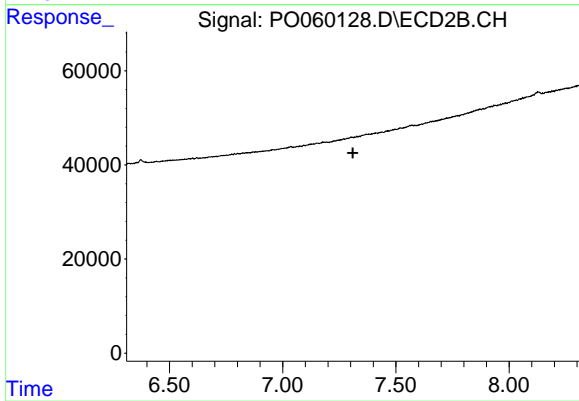
Instrument :  
 ECD\_O  
 ClientSampleId :  
 TP5-COMP



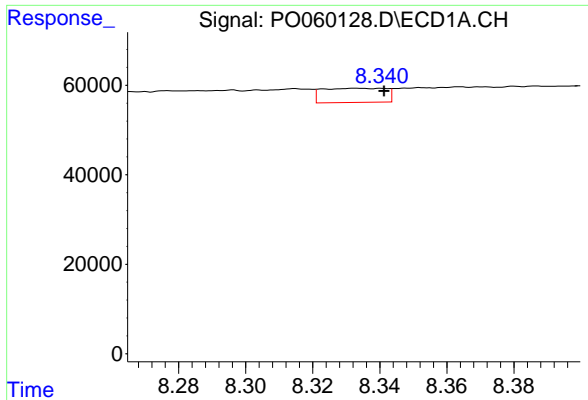
#37 AR-1262-2  
 R.T.: 0.000 min  
 Exp R.T. : 7.037 min  
 Response: 0  
 Conc: N.D.



#38 AR-1262-3  
 R.T.: 8.315 min  
 Delta R.T.: 0.020 min  
 Response: 195623  
 Conc: 38.34 ng/ml



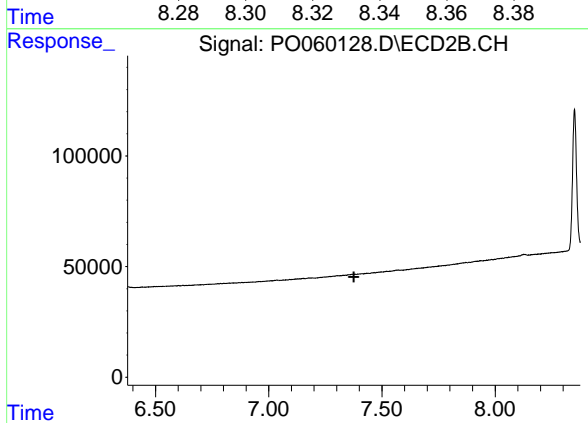
#38 AR-1262-3  
 R.T.: 0.000 min  
 Exp R.T. : 7.310 min  
 Response: 0  
 Conc: N.D.



#39 AR-1262-4

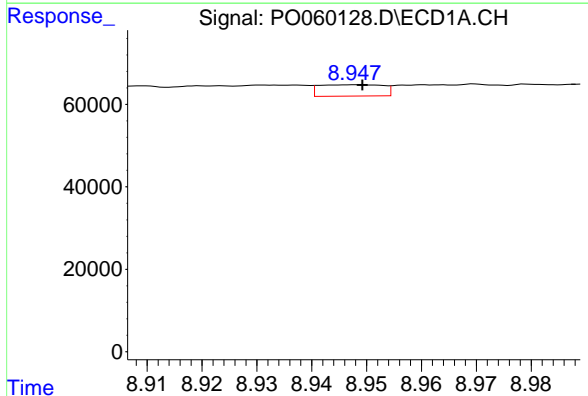
R.T.: 8.333 min  
 Delta R.T.: -0.008 min  
 Response: 41433  
 Conc: 10.75 ng/ml

Instrument :  
 ECD\_O  
 ClientSampleId :  
 TP5-COMP



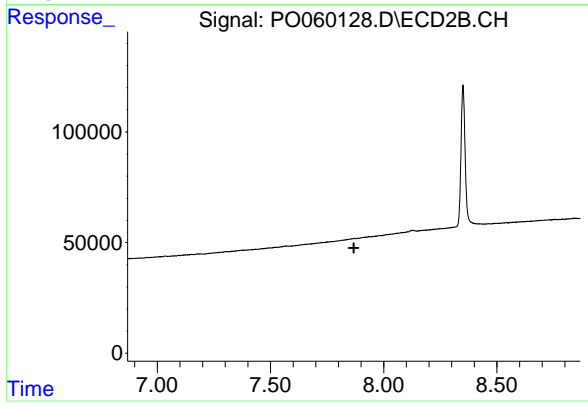
#39 AR-1262-4

R.T.: 0.000 min  
 Exp R.T. : 7.376 min  
 Response: 0  
 Conc: N.D.



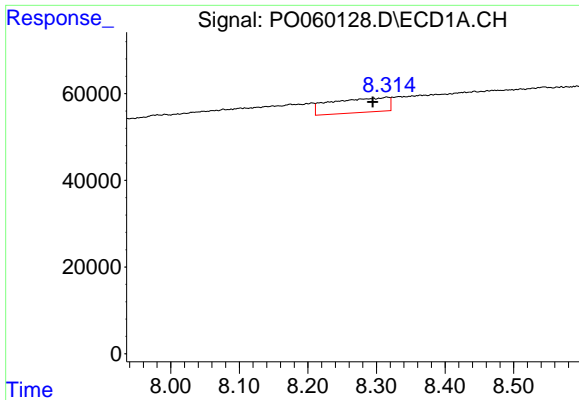
#40 AR-1262-5

R.T.: 8.948 min  
 Delta R.T.: -0.002 min  
 Response: 22296  
 Conc: 8.69 ng/ml



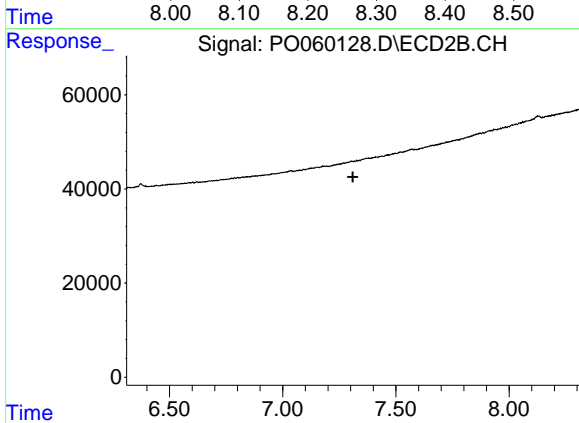
#40 AR-1262-5

R.T.: 0.000 min  
 Exp R.T. : 7.868 min  
 Response: 0  
 Conc: N.D.

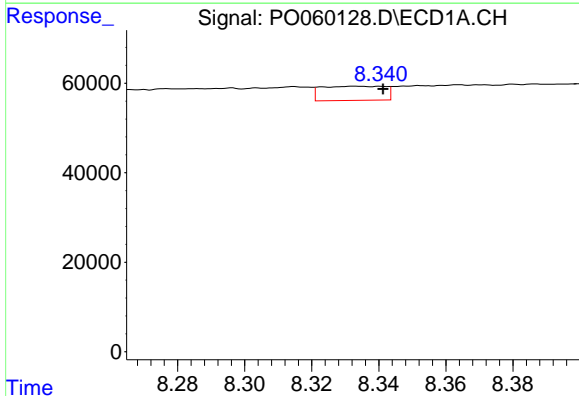


#41 AR-1268-1  
 R.T.: 8.315 min  
 Delta R.T.: 0.020 min  
 Response: 195623  
 Conc: 20.79 ng/ml

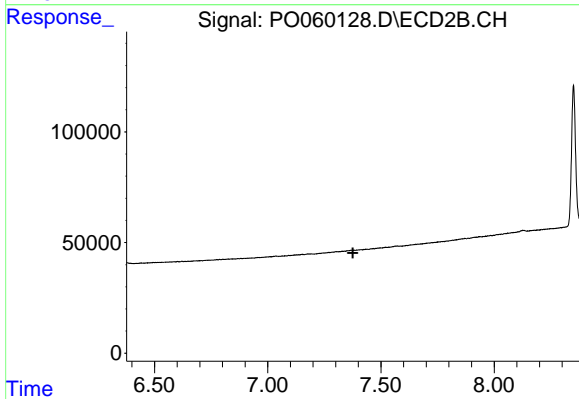
Instrument :  
 ECD\_O  
 ClientSampleId :  
 TP5-COMP



#41 AR-1268-1  
 R.T.: 0.000 min  
 Exp R.T. : 7.310 min  
 Response: 0  
 Conc: N.D.

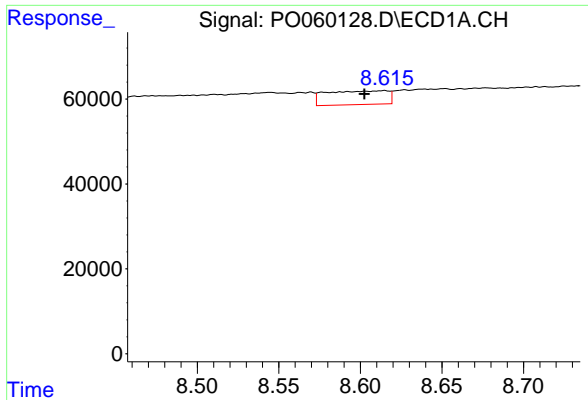


#42 AR-1268-2  
 R.T.: 8.333 min  
 Delta R.T.: -0.008 min  
 Response: 41433  
 Conc: 5.26 ng/ml



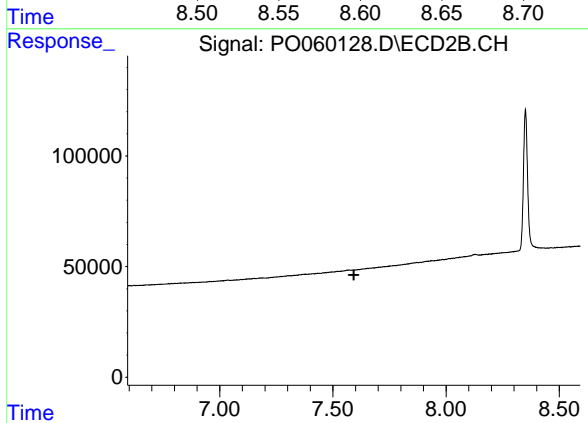
#42 AR-1268-2  
 R.T.: 0.000 min  
 Exp R.T. : 7.376 min  
 Response: 0  
 Conc: N.D.



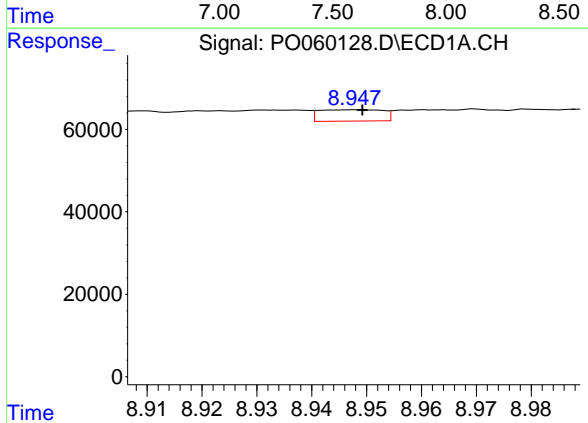


#43 AR-1268-3  
 R.T.: 8.615 min  
 Delta R.T.: 0.012 min  
 Response: 84824  
 Conc: 12.03 ng/ml

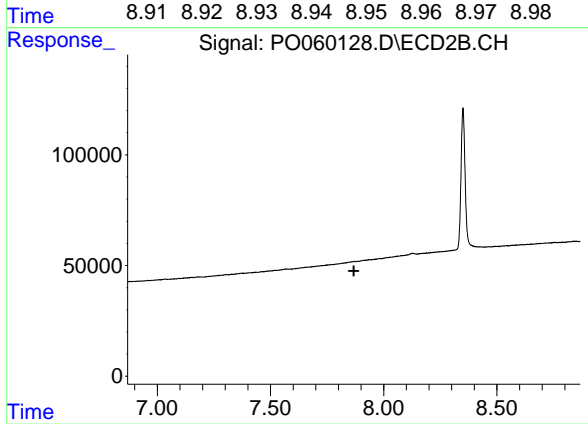
Instrument :  
 ECD\_O  
 ClientSampleId :  
 TP5-COMP



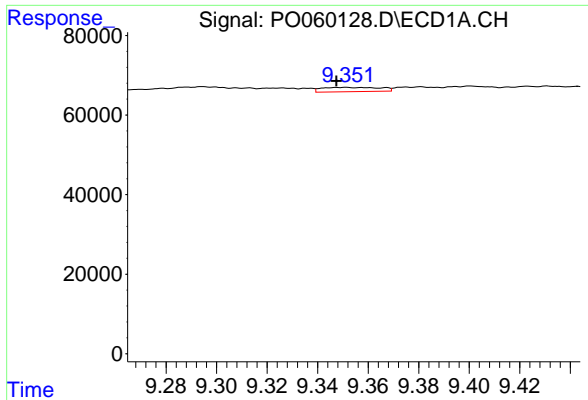
#43 AR-1268-3  
 R.T.: 0.000 min  
 Exp R.T. : 7.592 min  
 Response: 0  
 Conc: N.D.



#44 AR-1268-4  
 R.T.: 8.948 min  
 Delta R.T.: -0.002 min  
 Response: 22296  
 Conc: 8.02 ng/ml



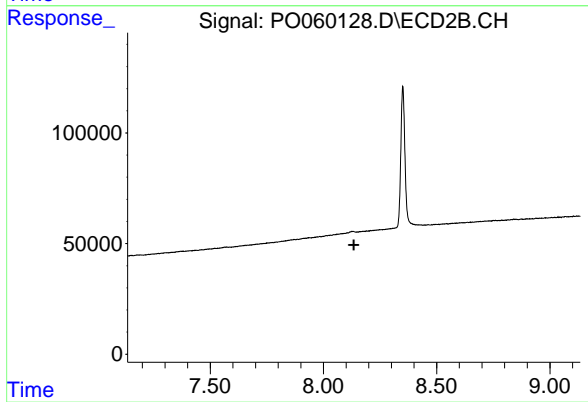
#44 AR-1268-4  
 R.T.: 0.000 min  
 Exp R.T. : 7.868 min  
 Response: 0  
 Conc: N.D.



#45 AR-1268-5

R.T.: 9.351 min  
Delta R.T.: 0.003 min  
Response: 17518  
Conc: 0.95 ng/ml

Instrument :  
ECD\_O  
ClientSampled :  
TP5-COMP



#45 AR-1268-5

R.T.: 8.126 min  
Delta R.T.: -0.008 min  
Response: -800386  
Conc: N.D.