

Data Path : Z:\pestpcbsrv\HPCHEM1\ECD_0\Data\P0083019\
 Data File : P0060137.D
 Signal(s) : Signal #1: ECD1A.CH Signal #2: ECD2B.CH
 Acq On : 31 Aug 2019 3:35
 Operator : SM/AJ
 Sample : K4619-36
 Misc :
 ALS Vial : 60 Sample Multiplier: 1

Instrument :
 ECD_0
 ClientSampleId :
 TP12-COMP

Integration File signal 1: autoint1.e
 Integration File signal 2: autoint2.e
 Quant Time: Aug 31 04:03:32 2019
 Quant Method : Z:\pestpcbsrv\HPCHEM1\ECD_0\methods\P0081719.M
 Quant Title : GC EXTRACTABLES
 QLast Update : Fri Aug 30 18:12:46 2019
 Response via : Initial Calibration
 Integrator: ChemStation 6890 Scale Mode: Small noise peaks clipped

Volume Inj. : 2 µl
 Signal #1 Phase : ZB-MR1 Signal #2 Phase: ZB-MR2
 Signal #1 Info : 30Mx0.32mmx 0.50µ Signal #2 Info : 30M x 0.32mm x 0.25µm

Compound	RT#1	RT#2	Resp#1	Resp#2	ng/ml	ng/ml
----------	------	------	--------	--------	-------	-------

System Monitoring Compounds

1) SA Tetrachlo...	4.120	3.495	872966	812860	24.933	22.582
2) SA Decachlor...	9.576	8.349	905628	718208	17.023	17.812

Target Compounds

3) L1 AR-1016-1	5.266	0.000	1951	0	1.217	N.D. #
4) L1 AR-1016-2	5.295	0.000	2024	0	0.846	N.D. #
5) L1 AR-1016-3	5.351	0.000	1060	0	0.712	N.D. #
6) L1 AR-1016-4	5.445	0.000	1471	0	1.216	N.D. #
7) L1 AR-1016-5	5.737	0.000	1669	0	1.300	N.D. #
8) L2 AR-1221-1	4.377	0.000	761	0	1.796	N.D. #
9) L2 AR-1221-2	4.420	0.000	12750	0	39.257	N.D. #
10) L2 AR-1221-3	4.501	0.000	14884	0	14.150	N.D. #
11) L3 AR-1232-1	4.501	0.000	14884	0	11.941	N.D. #
12) L3 AR-1232-2	5.001	0.000	1161	0	1.644	N.D. #
13) L3 AR-1232-3	5.295	0.000	2024	0	1.321	N.D. #
14) L3 AR-1232-4	5.538	0.000	2396	0	3.065	N.D. #
15) L3 AR-1232-5	5.581	0.000	1059	0	1.762	N.D. #
16) L4 AR-1242-1	5.295	0.000	2024	0	1.594	N.D. #
17) L4 AR-1242-2	5.295	0.000	2024	0	1.091	N.D. #
18) L4 AR-1242-3	5.351	0.000	1060	0	0.907	N.D. #
19) L4 AR-1242-4	5.538	0.000	2396	0	2.476	N.D. #
20) L4 AR-1242-5	6.226	0.000	5016	0	3.991	N.D. #
21) L5 AR-1248-1	5.266	0.000	1951	0	1.946	N.D. #
22) L5 AR-1248-2	5.538	0.000	2396	0	1.652	N.D. #
23) L5 AR-1248-3	5.711	0.000	790	0	0.475	N.D. #
24) L5 AR-1248-4	6.130	0.000	9537	0	4.666	N.D. #
25) L5 AR-1248-5	6.130	0.000	9537	0	4.809	N.D. #
26) L6 AR-1254-1	6.130	0.000	9537	0	4.571	N.D. #
27) L6 AR-1254-2	6.323	0.000	8752	0	2.623	N.D. #
28) L6 AR-1254-3	6.711	0.000	13525	0	3.812	N.D. #
29) L6 AR-1254-4	6.970	0.000	35870	0	12.178	N.D. #
30) L6 AR-1254-5	7.384	0.000	16314	0	5.275	N.D. #
31) L7 AR-1260-1	6.840	0.000	6749	0	2.504	N.D. #
32) L7 AR-1260-2	7.100	6.230	14490	20783	3.905	7.094 #
33) L7 AR-1260-3	7.456	0.000	6895	0	2.105	N.D. #
34) L7 AR-1260-4	7.674	6.733	39296	59445	12.794	26.273 #
35) L7 AR-1260-5	7.984	0.000	59334	0	8.379	N.D. #
36) L8 AR-1262-1	7.519	0.000	102305	0	21.081	N.D. #
37) L8 AR-1262-2	8.055	0.000	60810	0	7.881	N.D. #
38) L8 AR-1262-3	8.285	0.000	59625	0	11.686	N.D. #
39) L8 AR-1262-4	8.358	0.000	140377	0	36.417	N.D. #
40) L8 AR-1262-5	8.944	0.000	69140	0	26.939	N.D. #
41) L9 AR-1268-1	8.285	0.000	59625	0	6.336	N.D. #

Data Path : Z:\pestpcbsrv\HPCHEM1\ECD_0\Data\P0083019\
 Data File : P0060137.D
 Signal(s) : Signal #1: ECD1A.CH Signal #2: ECD2B.CH
 Acq On : 31 Aug 2019 3:35
 Operator : SM/AJ
 Sample : K4619-36
 Misc :
 ALS Vial : 60 Sample Multiplier: 1

Instrument :
 ECD_0
 ClientSampleId :
 TP12-COMP

Integration File signal 1: autoint1.e
 Integration File signal 2: autoint2.e
 Quant Time: Aug 31 04:03:32 2019
 Quant Method : Z:\pestpcbsrv\HPCHEM1\ECD_0\methods\P0081719.M
 Quant Title : GC EXTRACTABLES
 QLast Update : Fri Aug 30 18:12:46 2019
 Response via : Initial Calibration
 Integrator: ChemStation 6890 Scale Mode: Small noise peaks clipped

Volume Inj. : 2 µl
 Signal #1 Phase : ZB-MR1 Signal #2 Phase: ZB-MR2
 Signal #1 Info : 30Mx0.32mmx 0.50µ Signal #2 Info : 30M x 0.32mm x 0.25µm

	Compound	RT#1	RT#2	Resp#1	Resp#2	ng/ml	ng/ml
42)	L9 AR-1268-2	8.358	0.000	140377	0	17.808	N.D. #
43)	L9 AR-1268-3	8.597	0.000	61989	0	8.794	N.D. #
44)	L9 AR-1268-4	8.944	0.000	69140	0	24.870	N.D. #

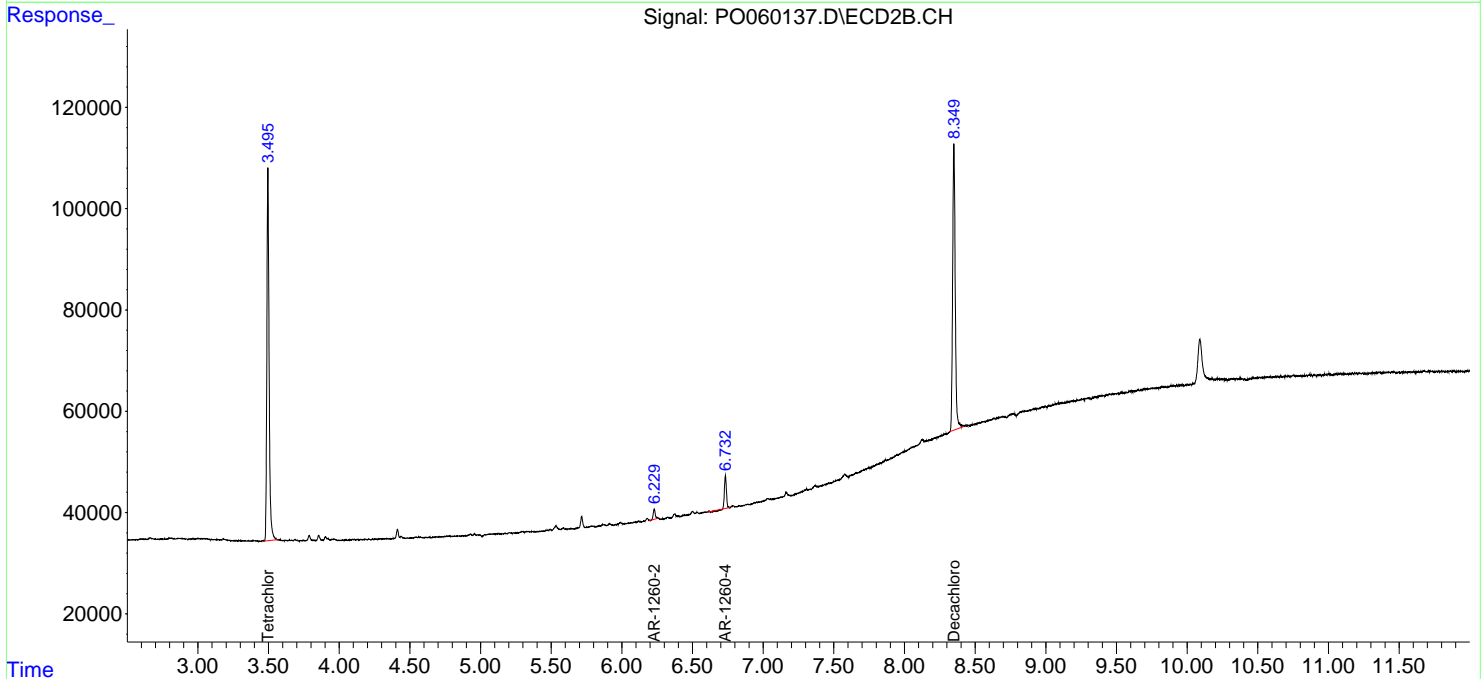
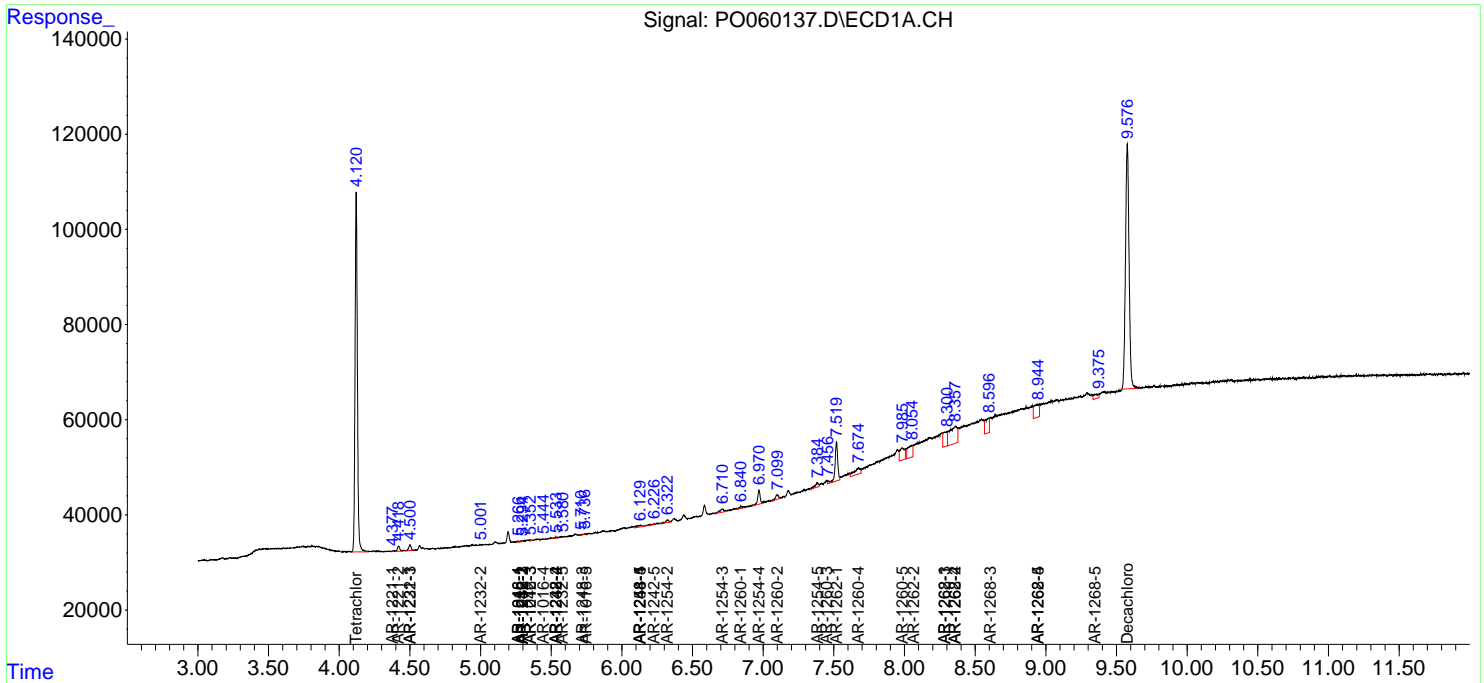
(f)=RT Delta > 1/2 Window (#)=Amounts differ by > 25% (m)=manual int.

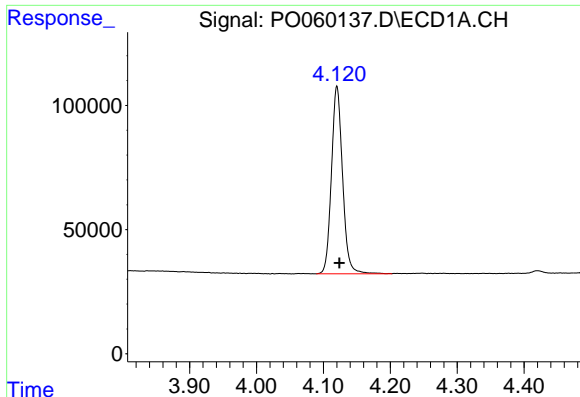
Data Path : Z:\pestpcbsrv\HPCHEM1\ECD_0\Data\P0083019\
 Data File : P0060137.D
 Signal(s) : Signal #1: ECD1A.CH Signal #2: ECD2B.CH
 Acq On : 31 Aug 2019 3:35
 Operator : SM/AJ
 Sample : K4619-36
 Misc :
 ALS Vial : 60 Sample Multiplier: 1

Instrument :
 ECD_O
 Client Sampled :
 TP12-COMP

Integration File signal 1: autoint1.e
 Integration File signal 2: autoint2.e
 Quant Time: Aug 31 04:03:32 2019
 Quant Method : Z:\pestpcbsrv\HPCHEM1\ECD_0\methods\P0081719.M
 Quant Title : GC EXTRACTABLES
 QLast Update : Fri Aug 30 18:12:46 2019
 Response via : Initial Calibration
 Integrator: ChemStation 6890 Scale Mode: Small noise peaks clipped

Volume Inj. : 2 µl
 Signal #1 Phase : ZB-MR1 Signal #2 Phase: ZB-MR2
 Signal #1 Info : 30Mx0.32mmx 0.50µ Signal #2 Info : 30M x 0.32mm x 0.25µm

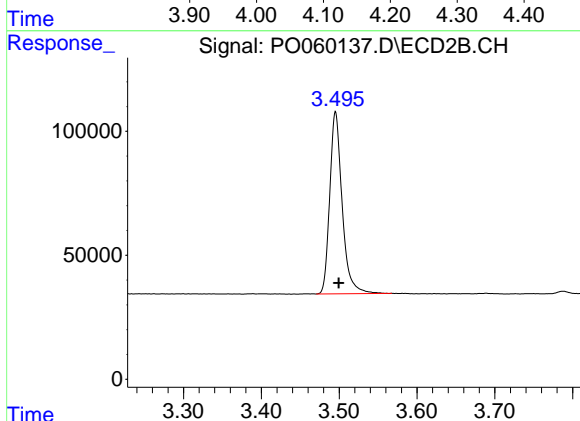




#1 Tetrachloro-m-xylene

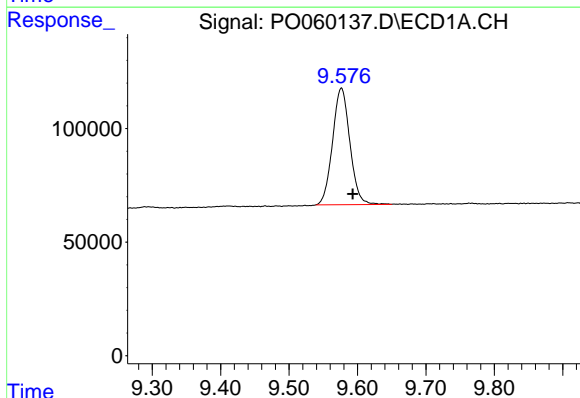
R.T.: 4.120 min
 Delta R.T.: -0.004 min
 Response: 872966
 Conc: 24.93 ng/ml

Instrument :
 ECD_O
 ClientSampleId :
 TP12-COMP



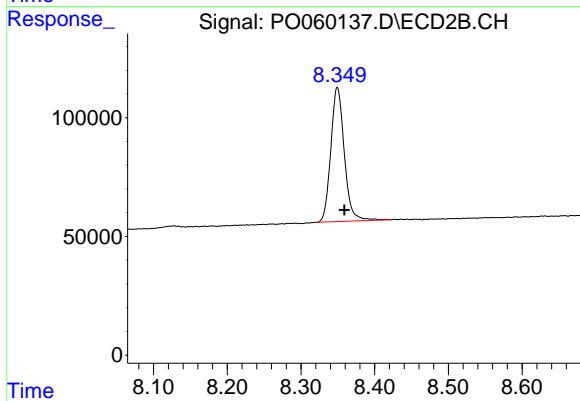
#1 Tetrachloro-m-xylene

R.T.: 3.495 min
 Delta R.T.: -0.004 min
 Response: 812860
 Conc: 22.58 ng/ml



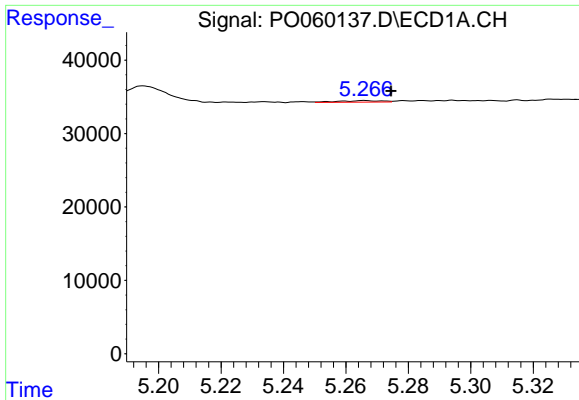
#2 Decachlorobiphenyl

R.T.: 9.576 min
 Delta R.T.: -0.017 min
 Response: 905628
 Conc: 17.02 ng/ml



#2 Decachlorobiphenyl

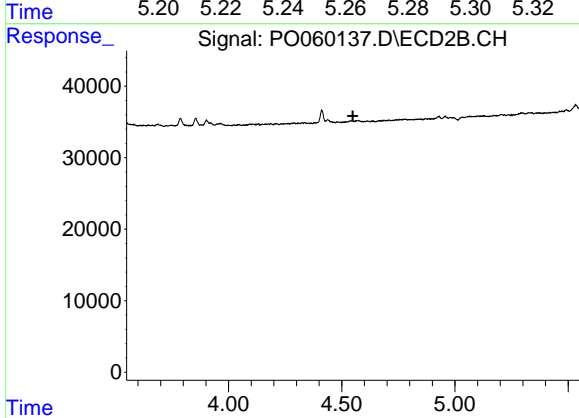
R.T.: 8.349 min
 Delta R.T.: -0.010 min
 Response: 718208
 Conc: 17.81 ng/ml



#3 AR-1016-1

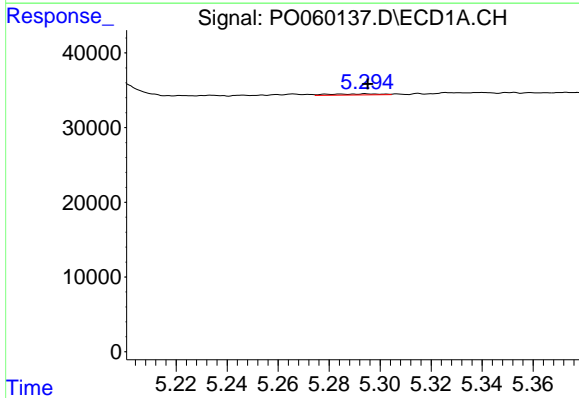
R.T.: 5.266 min
 Delta R.T.: -0.008 min
 Response: 1951
 Conc: 1.22 ng/ml

Instrument :
 ECD_O
 ClientSampleId :
 TP12-COMP



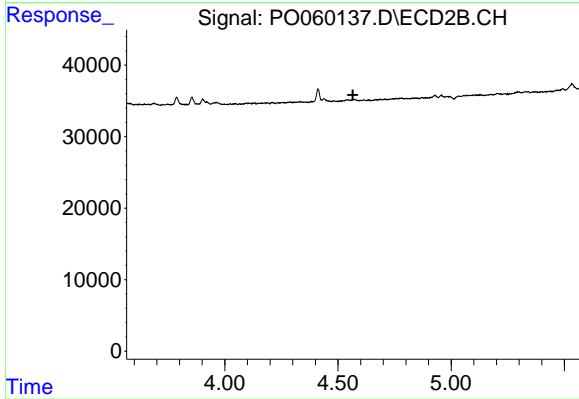
#3 AR-1016-1

R.T.: 0.000 min
 Exp R.T. : 4.550 min
 Response: 0
 Conc: N.D.



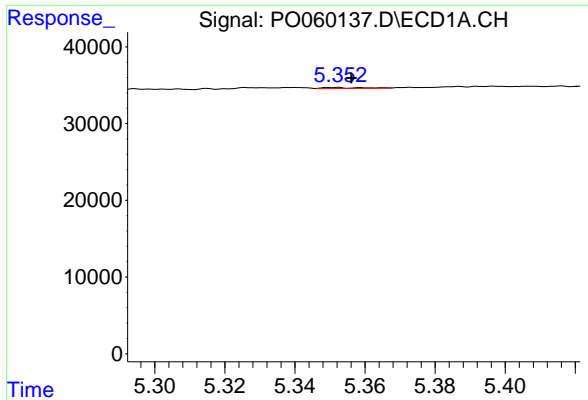
#4 AR-1016-2

R.T.: 5.295 min
 Delta R.T.: 0.000 min
 Response: 2024
 Conc: 0.85 ng/ml



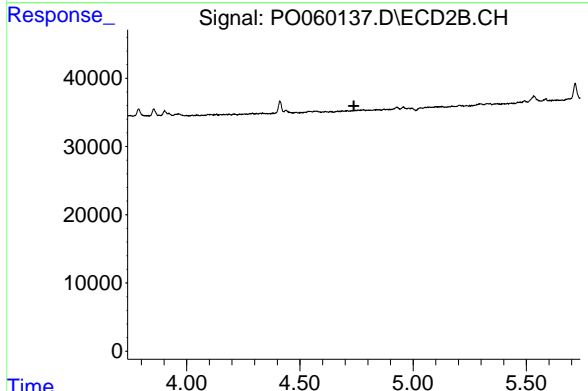
#4 AR-1016-2

R.T.: 0.000 min
 Exp R.T. : 4.566 min
 Response: 0
 Conc: N.D.

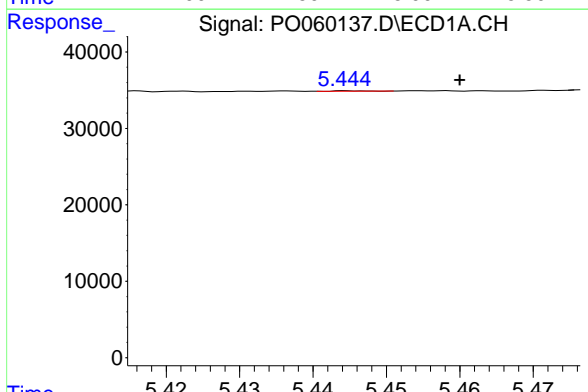


#5 AR-1016-3
 R.T.: 5.351 min
 Delta R.T.: -0.005 min
 Response: 1060
 Conc: 0.71 ng/ml

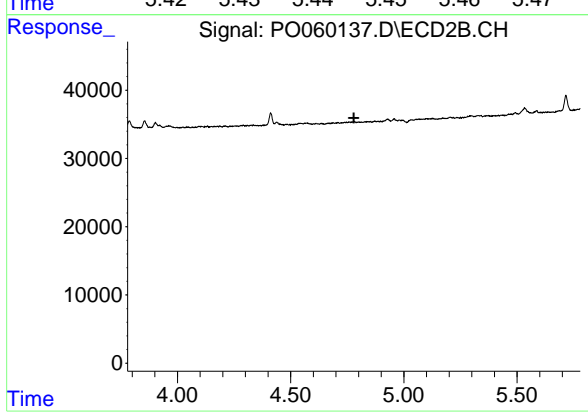
Instrument :
 ECD_O
ClientSampled :
 TP12-COMP



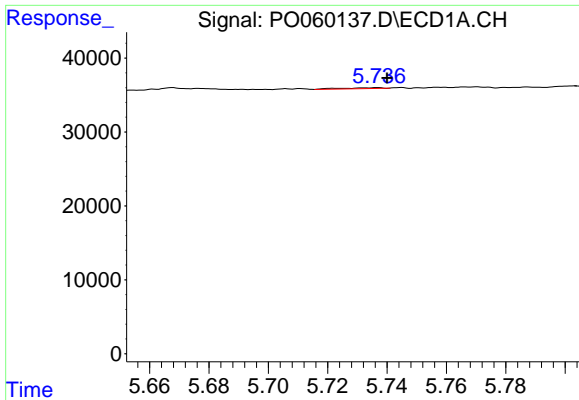
#5 AR-1016-3
 R.T.: 0.000 min
 Exp R.T. : 4.738 min
 Response: 0
 Conc: N.D.



#6 AR-1016-4
 R.T.: 5.445 min
 Delta R.T.: -0.015 min
 Response: 1471
 Conc: 1.22 ng/ml



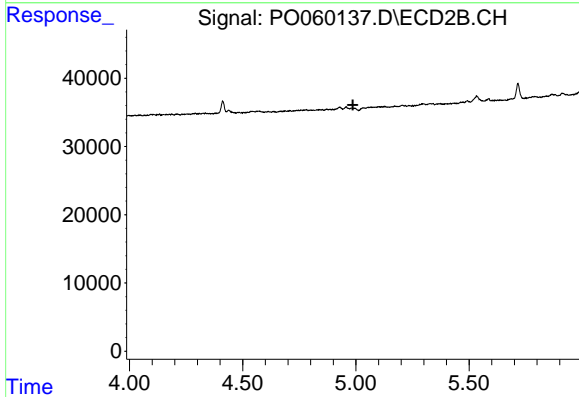
#6 AR-1016-4
 R.T.: 0.000 min
 Exp R.T. : 4.779 min
 Response: 0
 Conc: N.D.



#7 AR-1016-5

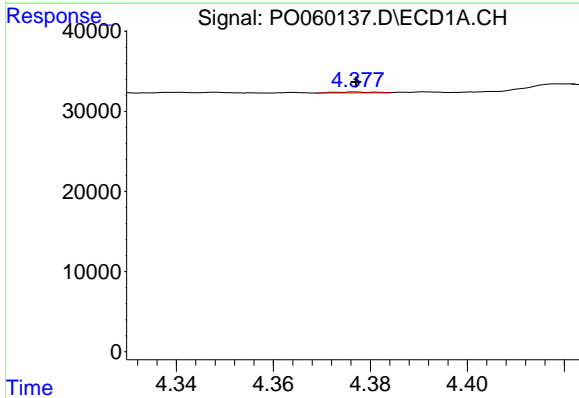
R.T.: 5.737 min
 Delta R.T.: -0.003 min
 Response: 1669
 Conc: 1.30 ng/ml

Instrument :
 ECD_O
 ClientSampleId :
 TP12-COMP



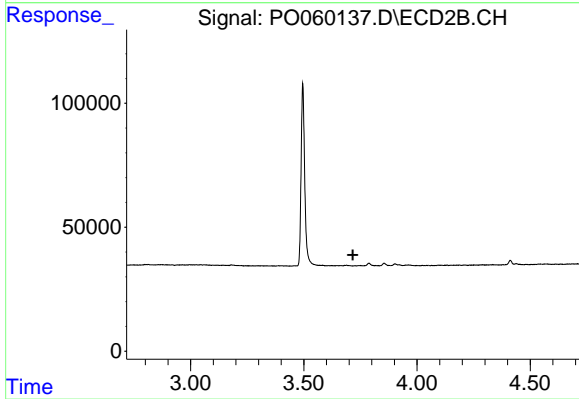
#7 AR-1016-5

R.T.: 0.000 min
 Exp R.T. : 4.987 min
 Response: 0
 Conc: N.D.



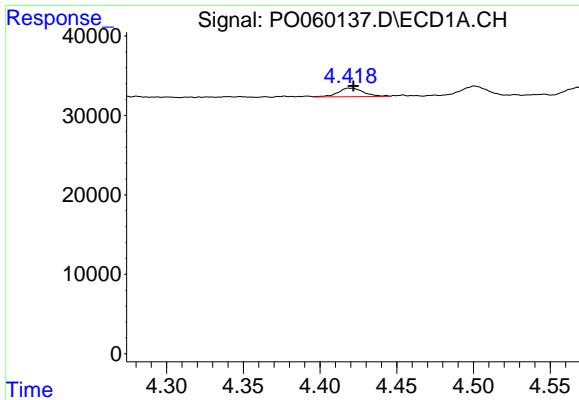
#8 AR-1221-1

R.T.: 4.377 min
 Delta R.T.: 0.000 min
 Response: 761
 Conc: 1.80 ng/ml



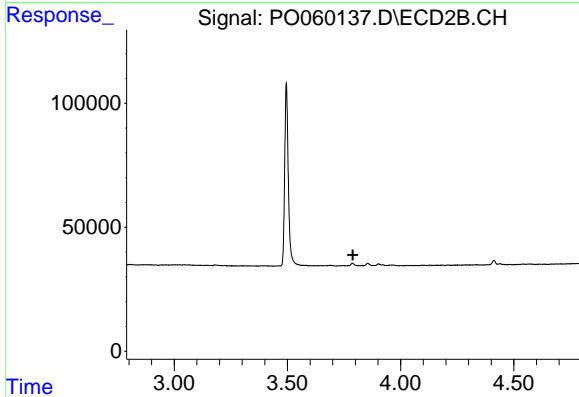
#8 AR-1221-1

R.T.: 0.000 min
 Exp R.T. : 3.717 min
 Response: 0
 Conc: N.D.

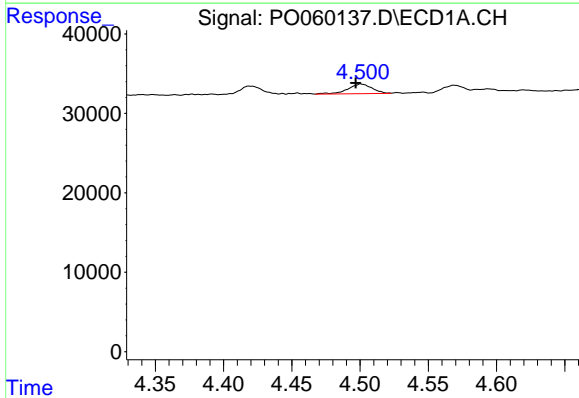


#9 AR-1221-2
 R.T.: 4.420 min
 Delta R.T.: -0.002 min
 Response: 12750
 Conc: 39.26 ng/ml

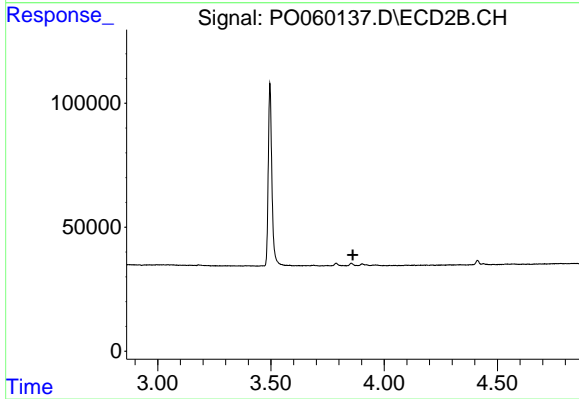
Instrument :
 ECD_O
 ClientSampleId :
 TP12-COMP



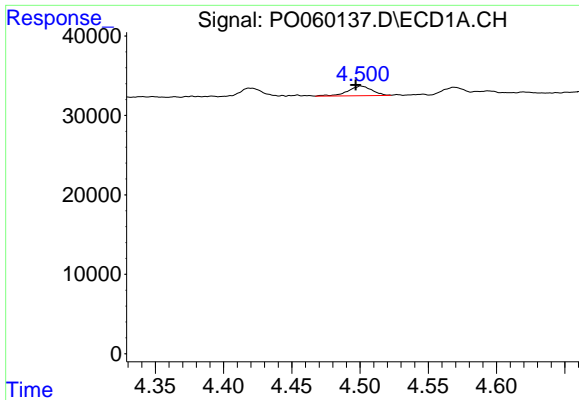
#9 AR-1221-2
 R.T.: 0.000 min
 Exp R.T. : 3.789 min
 Response: 0
 Conc: N.D.



#10 AR-1221-3
 R.T.: 4.501 min
 Delta R.T.: 0.004 min
 Response: 14884
 Conc: 14.15 ng/ml

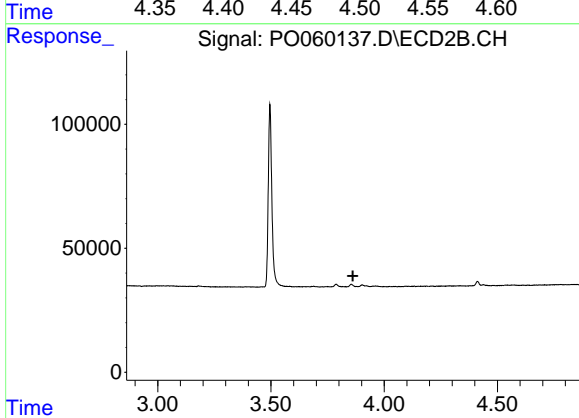


#10 AR-1221-3
 R.T.: 0.000 min
 Exp R.T. : 3.862 min
 Response: 0
 Conc: N.D.

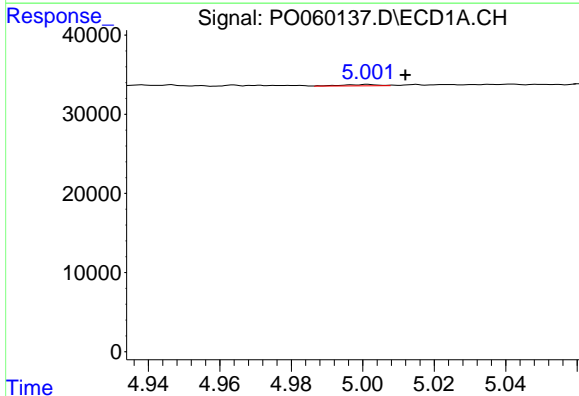


#11 AR-1232-1
 R.T.: 4.501 min
 Delta R.T.: 0.004 min
 Response: 14884
 Conc: 11.94 ng/ml

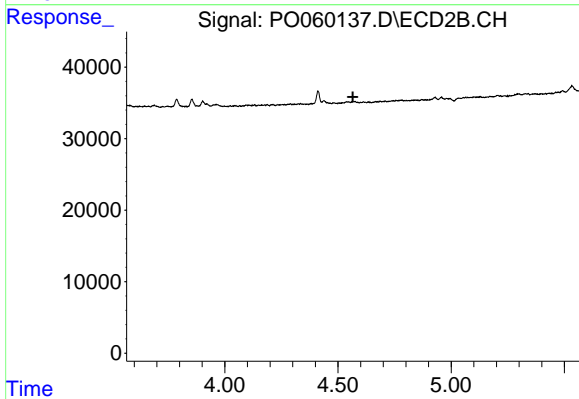
Instrument :
 ECD_O
 ClientSampleId :
 TP12-COMP



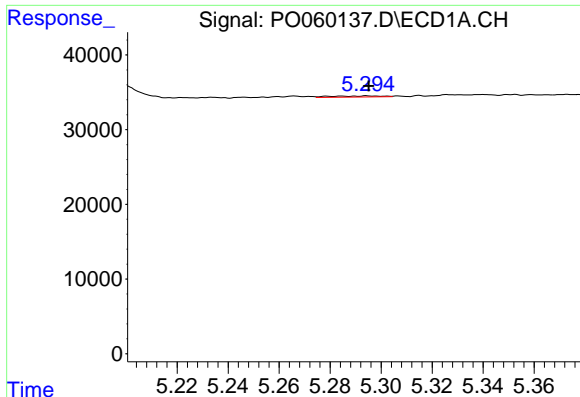
#11 AR-1232-1
 R.T.: 0.000 min
 Exp R.T. : 3.862 min
 Response: 0
 Conc: N.D.



#12 AR-1232-2
 R.T.: 5.001 min
 Delta R.T.: -0.011 min
 Response: 1161
 Conc: 1.64 ng/ml



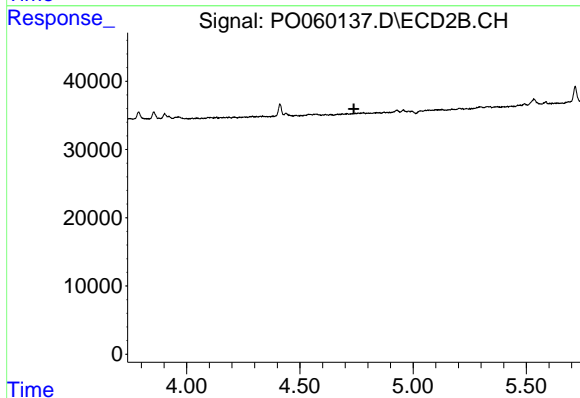
#12 AR-1232-2
 R.T.: 0.000 min
 Exp R.T. : 4.566 min
 Response: 0
 Conc: N.D.



#13 AR-1232-3

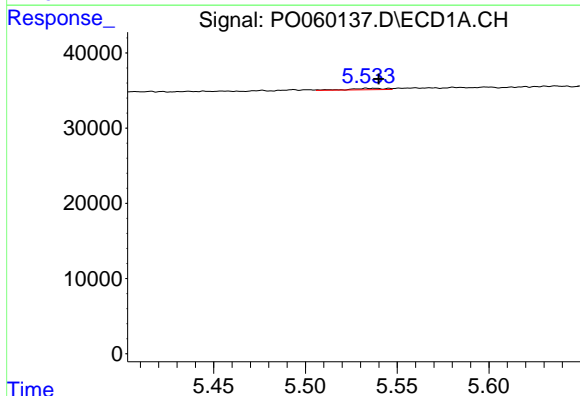
R.T.: 5.295 min
 Delta R.T.: 0.000 min
 Response: 2024
 Conc: 1.32 ng/ml

Instrument :
 ECD_O
 ClientSampleId :
 TP12-COMP



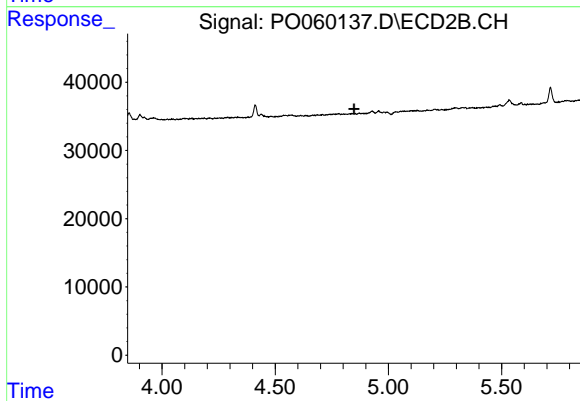
#13 AR-1232-3

R.T.: 0.000 min
 Exp R.T. : 4.738 min
 Response: 0
 Conc: N.D.



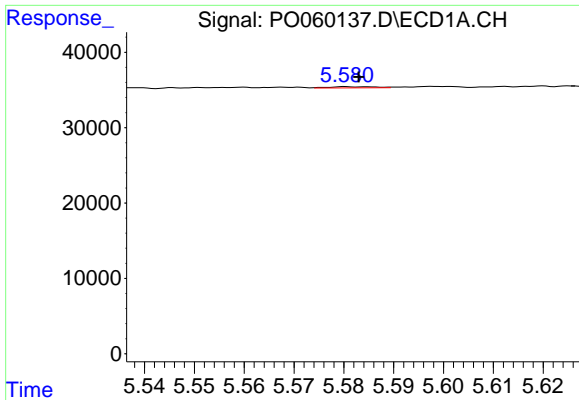
#14 AR-1232-4

R.T.: 5.538 min
 Delta R.T.: -0.002 min
 Response: 2396
 Conc: 3.06 ng/ml



#14 AR-1232-4

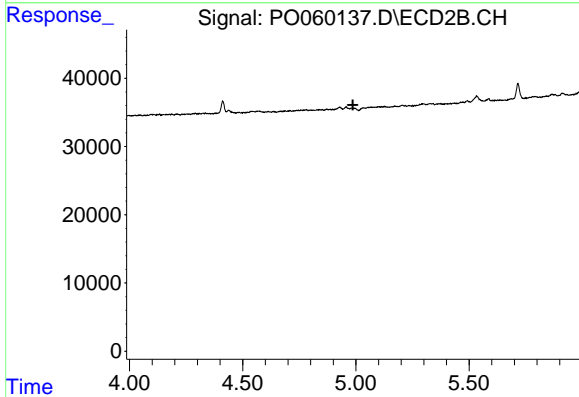
R.T.: 0.000 min
 Exp R.T. : 4.848 min
 Response: 0
 Conc: N.D.



#15 AR-1232-5

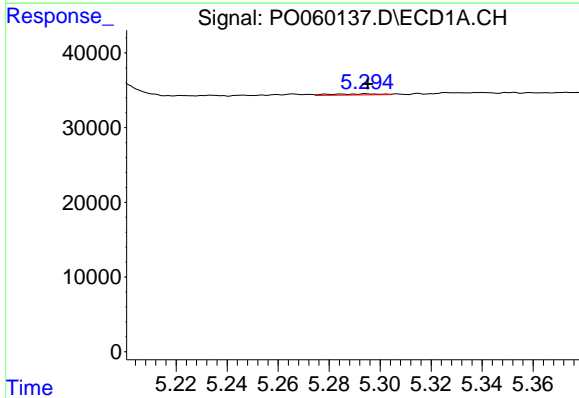
R.T.: 5.581 min
 Delta R.T.: -0.002 min
 Response: 1059
 Conc: 1.76 ng/ml

Instrument :
 ECD_O
 ClientSampleId :
 TP12-COMP



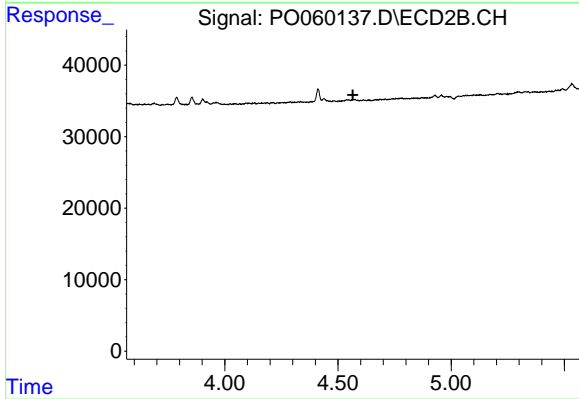
#15 AR-1232-5

R.T.: 0.000 min
 Exp R.T. : 4.987 min
 Response: 0
 Conc: N.D.



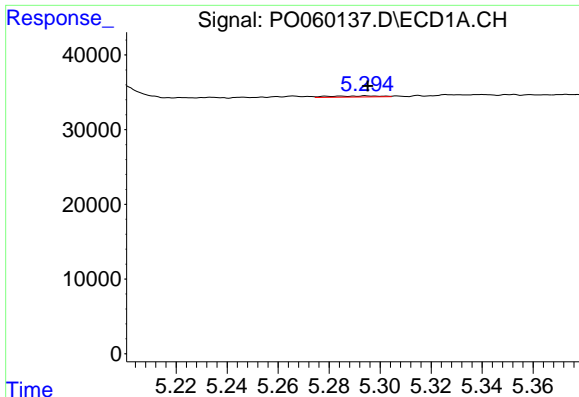
#16 AR-1242-1

R.T.: 5.295 min
 Delta R.T.: 0.000 min
 Response: 2024
 Conc: 1.59 ng/ml



#16 AR-1242-1

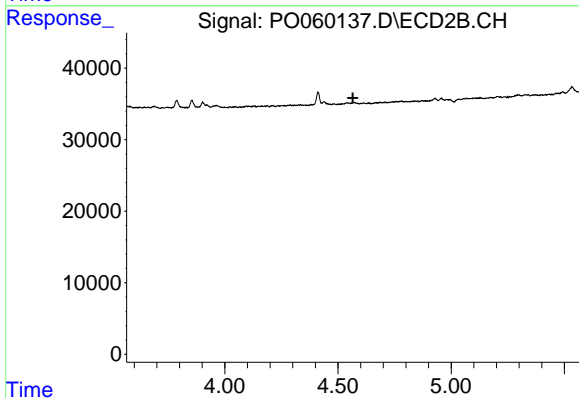
R.T.: 0.000 min
 Exp R.T. : 4.566 min
 Response: 0
 Conc: N.D.



#17 AR-1242-2

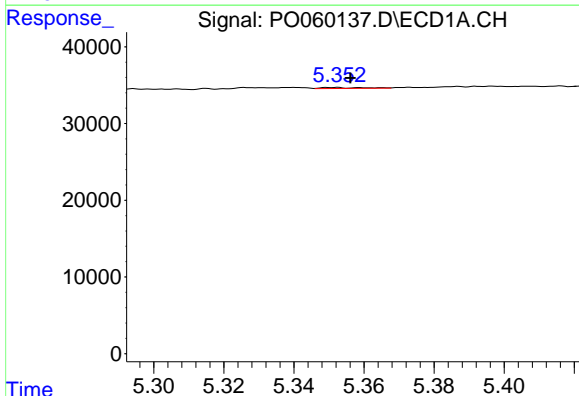
R.T.: 5.295 min
 Delta R.T.: 0.000 min
 Response: 2024
 Conc: 1.09 ng/ml

Instrument :
 ECD_O
 ClientSampled :
 TP12-COMP



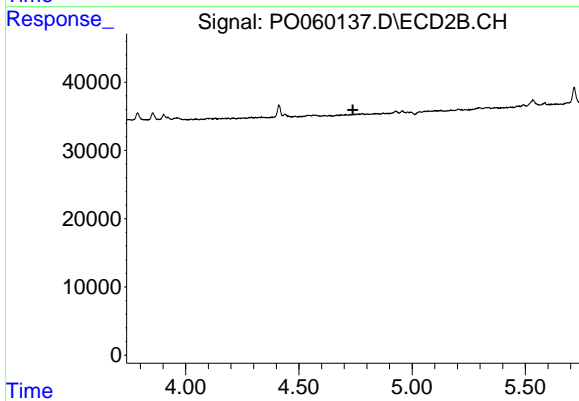
#17 AR-1242-2

R.T.: 0.000 min
 Exp R.T. : 4.566 min
 Response: 0
 Conc: N.D.



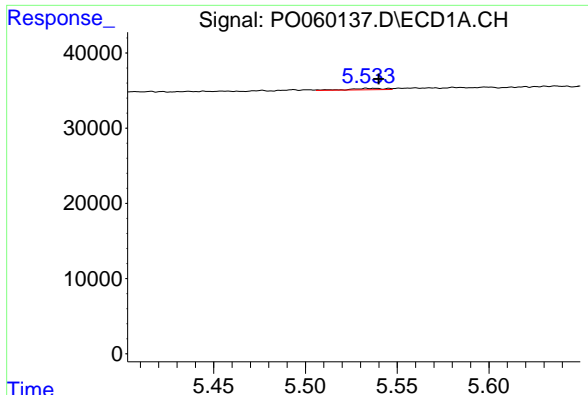
#18 AR-1242-3

R.T.: 5.351 min
 Delta R.T.: -0.005 min
 Response: 1060
 Conc: 0.91 ng/ml



#18 AR-1242-3

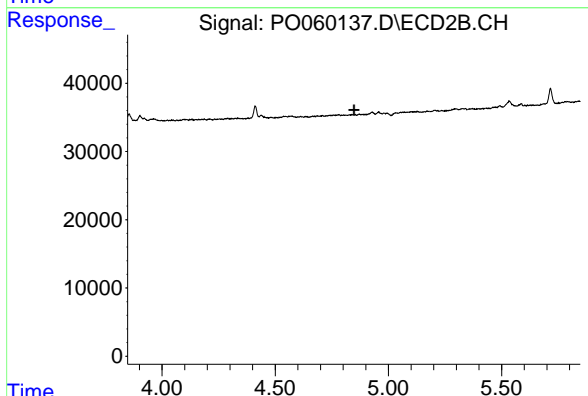
R.T.: 0.000 min
 Exp R.T. : 4.738 min
 Response: 0
 Conc: N.D.



#19 AR-1242-4

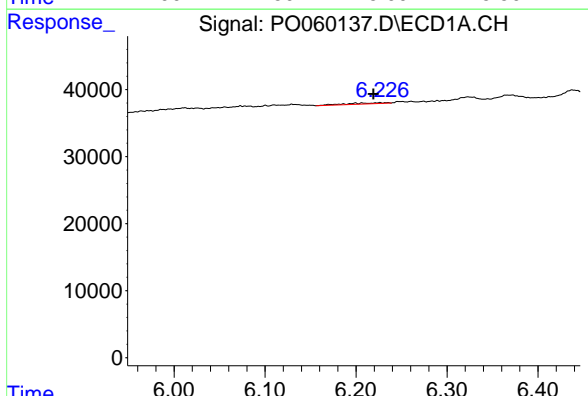
R.T.: 5.538 min
 Delta R.T.: -0.002 min
 Response: 2396
 Conc: 2.48 ng/ml

Instrument :
 ECD_O
 ClientSampled :
 TP12-COMP



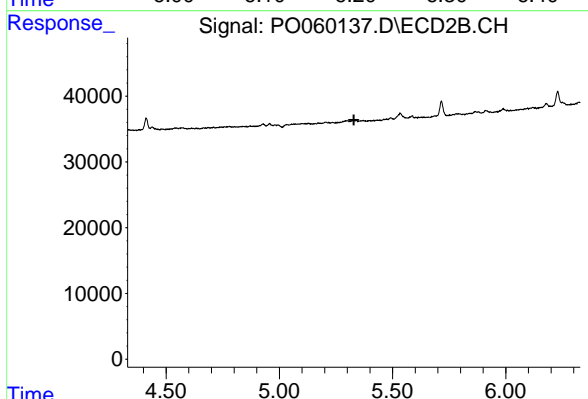
#19 AR-1242-4

R.T.: 0.000 min
 Exp R.T. : 4.848 min
 Response: 0
 Conc: N.D.



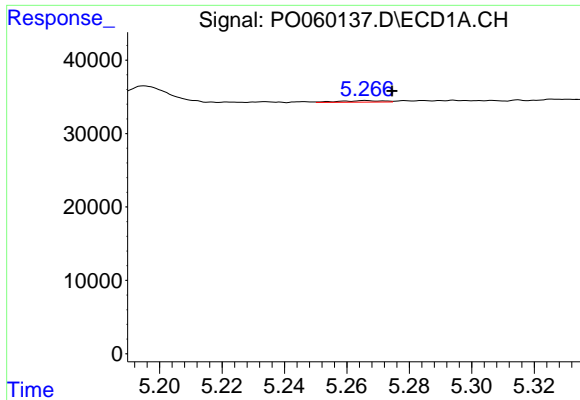
#20 AR-1242-5

R.T.: 6.226 min
 Delta R.T.: 0.007 min
 Response: 5016
 Conc: 3.99 ng/ml



#20 AR-1242-5

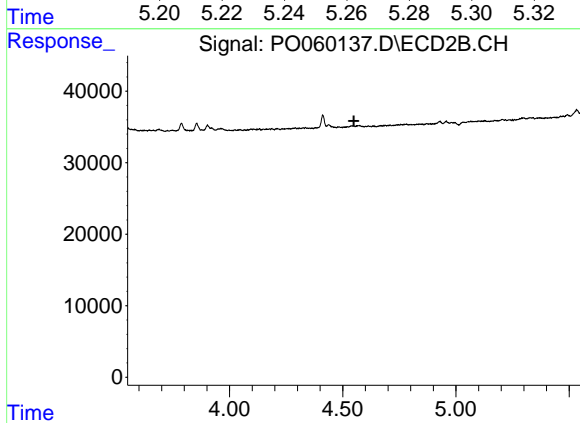
R.T.: 0.000 min
 Exp R.T. : 5.330 min
 Response: 0
 Conc: N.D.



#21 AR-1248-1

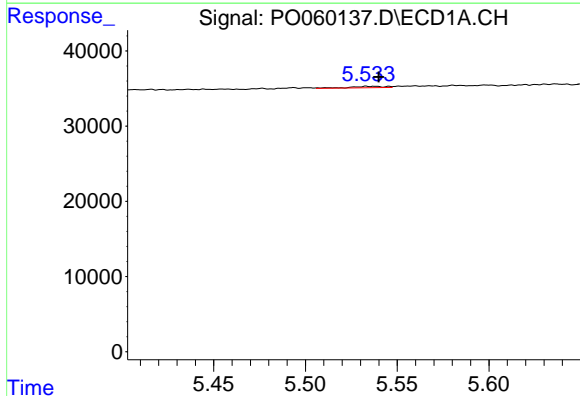
R.T.: 5.266 min
 Delta R.T.: -0.008 min
 Response: 1951
 Conc: 1.95 ng/ml

Instrument :
 ECD_O
 ClientSampleId :
 TP12-COMP



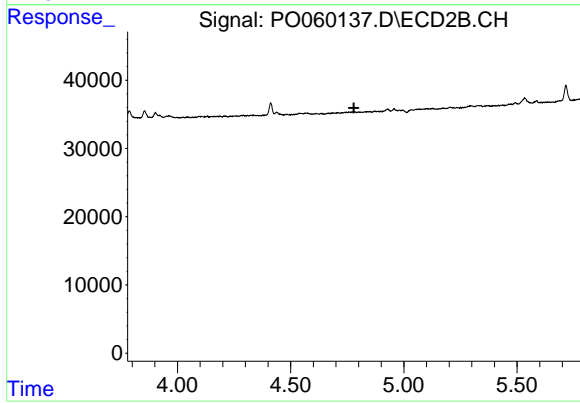
#21 AR-1248-1

R.T.: 0.000 min
 Exp R.T. : 4.550 min
 Response: 0
 Conc: N.D.



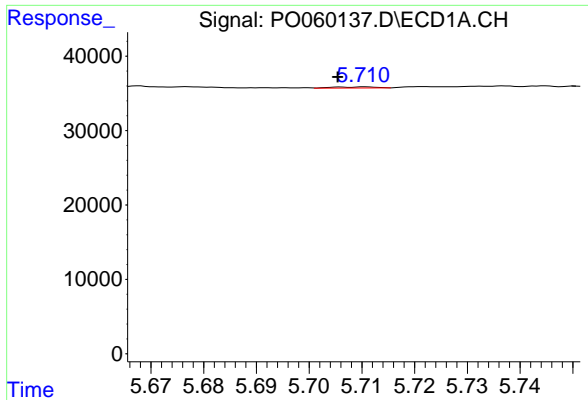
#22 AR-1248-2

R.T.: 5.538 min
 Delta R.T.: -0.002 min
 Response: 2396
 Conc: 1.65 ng/ml



#22 AR-1248-2

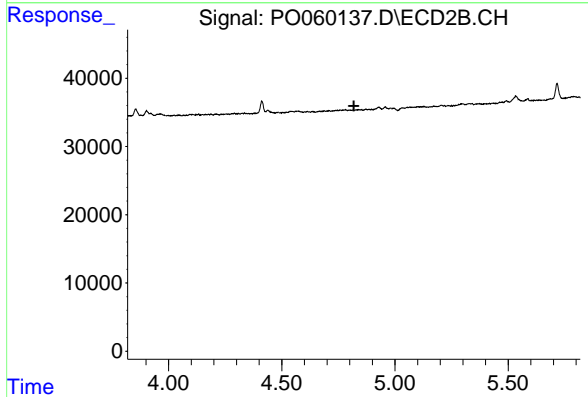
R.T.: 0.000 min
 Exp R.T. : 4.779 min
 Response: 0
 Conc: N.D.



#23 AR-1248-3

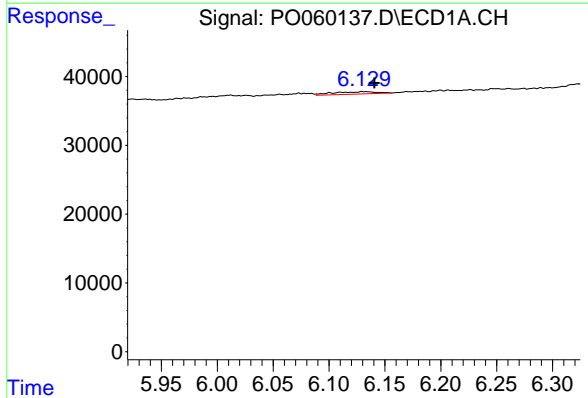
R.T.: 5.711 min
 Delta R.T.: 0.005 min
 Response: 790
 Conc: 0.48 ng/ml

Instrument :
 ECD_O
 ClientSampleId :
 TP12-COMP



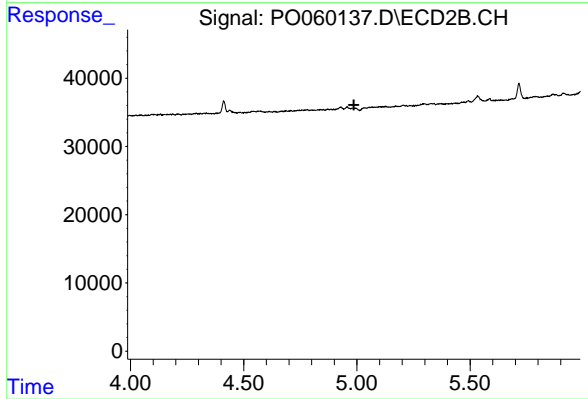
#23 AR-1248-3

R.T.: 0.000 min
 Exp R.T. : 4.819 min
 Response: 0
 Conc: N.D.



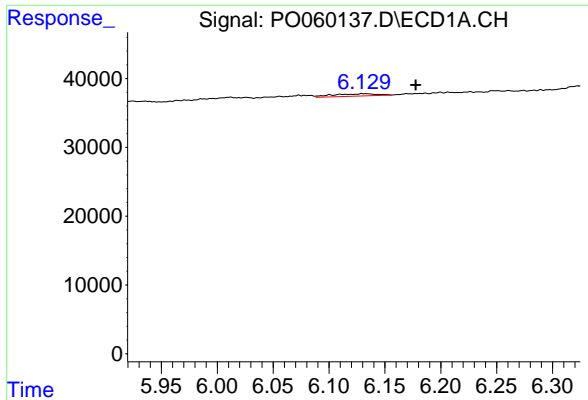
#24 AR-1248-4

R.T.: 6.130 min
 Delta R.T.: -0.011 min
 Response: 9537
 Conc: 4.67 ng/ml



#24 AR-1248-4

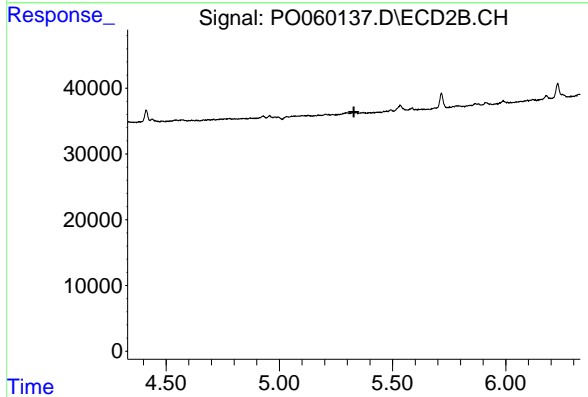
R.T.: 0.000 min
 Exp R.T. : 4.987 min
 Response: 0
 Conc: N.D.



#25 AR-1248-5

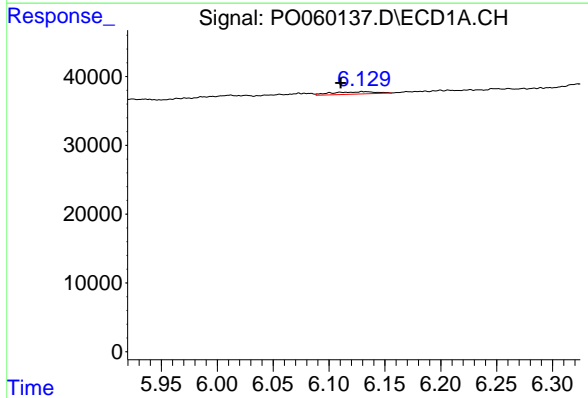
R.T.: 6.130 min
 Delta R.T.: -0.048 min
 Response: 9537
 Conc: 4.81 ng/ml

Instrument :
 ECD_O
 ClientSampleId :
 TP12-COMP



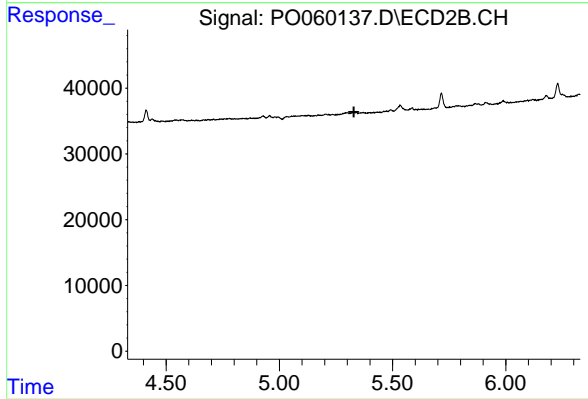
#25 AR-1248-5

R.T.: 0.000 min
 Exp R.T. : 5.330 min
 Response: 0
 Conc: N.D.



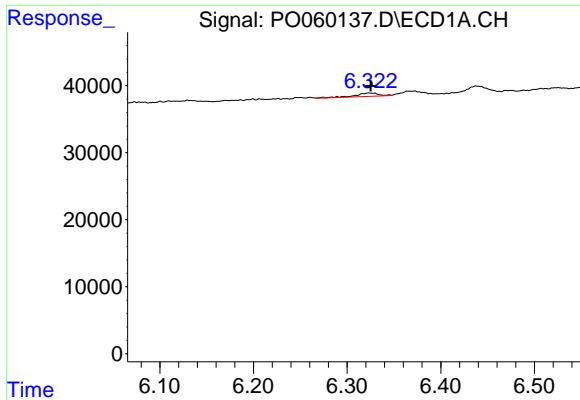
#26 AR-1254-1

R.T.: 6.130 min
 Delta R.T.: 0.019 min
 Response: 9537
 Conc: 4.57 ng/ml



#26 AR-1254-1

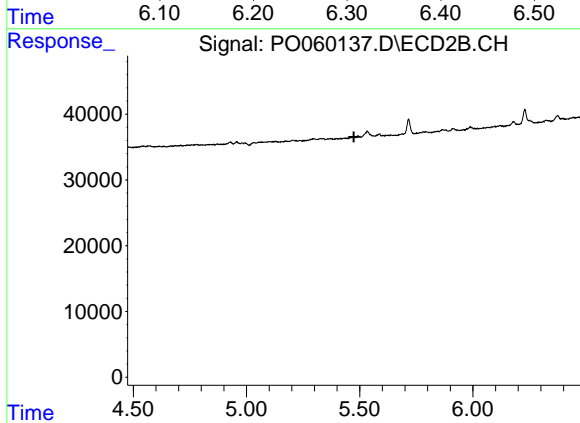
R.T.: 0.000 min
 Exp R.T. : 5.330 min
 Response: 0
 Conc: N.D.



#27 AR-1254-2

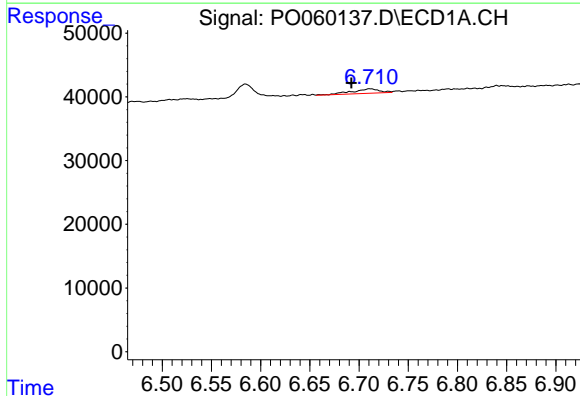
R.T.: 6.323 min
 Delta R.T.: -0.002 min
 Response: 8752
 Conc: 2.62 ng/ml

Instrument :
 ECD_O
 ClientSampleId :
 TP12-COMP



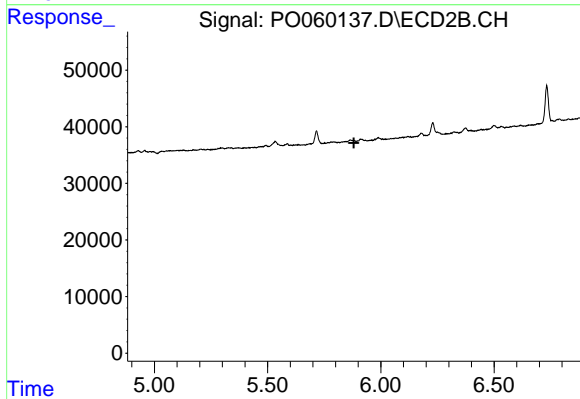
#27 AR-1254-2

R.T.: 0.000 min
 Exp R.T. : 5.474 min
 Response: 0
 Conc: N.D.



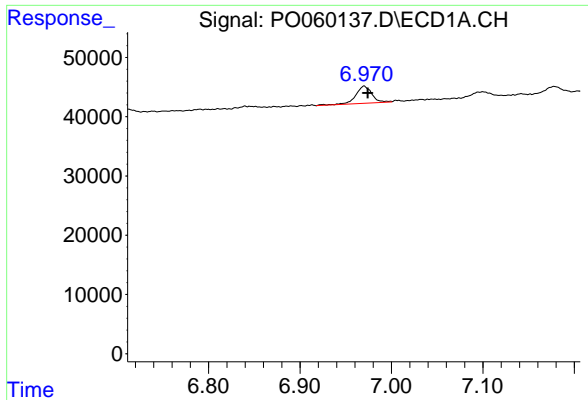
#28 AR-1254-3

R.T.: 6.711 min
 Delta R.T.: 0.019 min
 Response: 13525
 Conc: 3.81 ng/ml



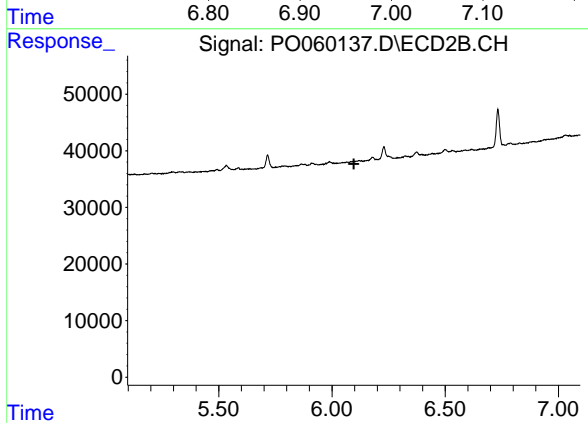
#28 AR-1254-3

R.T.: 0.000 min
 Exp R.T. : 5.881 min
 Response: 0
 Conc: N.D.

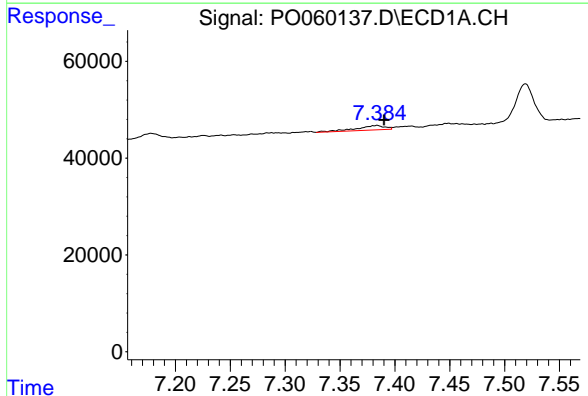


#29 AR-1254-4
 R.T.: 6.970 min
 Delta R.T.: -0.004 min
 Response: 35870
 Conc: 12.18 ng/ml

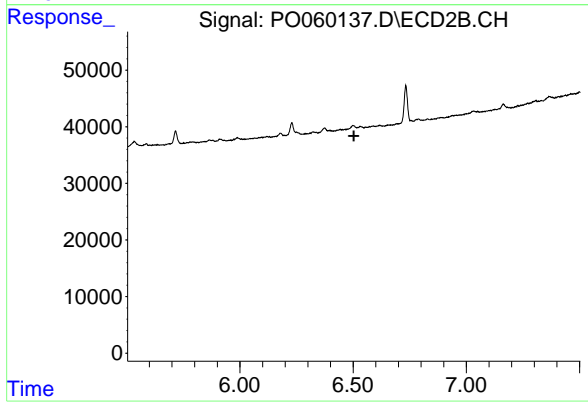
Instrument :
 ECD_O
 ClientSampleId :
 TP12-COMP



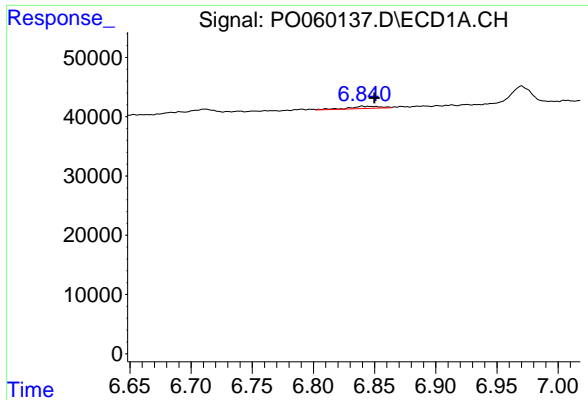
#29 AR-1254-4
 R.T.: 0.000 min
 Exp R.T. : 6.097 min
 Response: 0
 Conc: N.D.



#30 AR-1254-5
 R.T.: 7.384 min
 Delta R.T.: -0.006 min
 Response: 16314
 Conc: 5.28 ng/ml

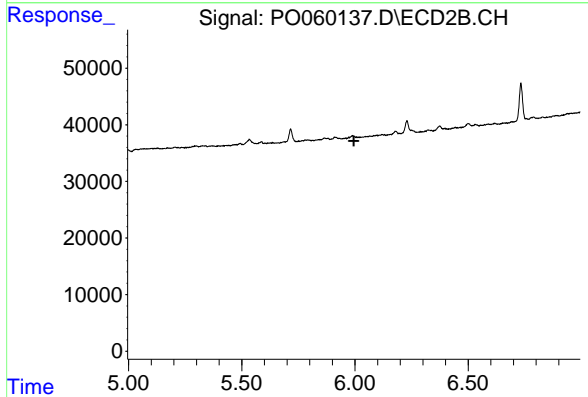


#30 AR-1254-5
 R.T.: 0.000 min
 Exp R.T. : 6.503 min
 Response: 0
 Conc: N.D.

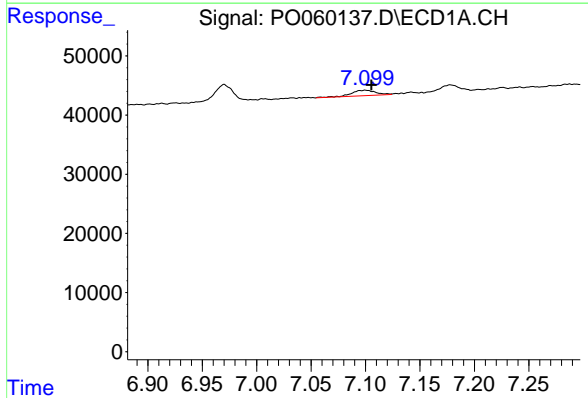


#31 AR-1260-1
 R.T.: 6.840 min
 Delta R.T.: -0.010 min
 Response: 6749
 Conc: 2.50 ng/ml

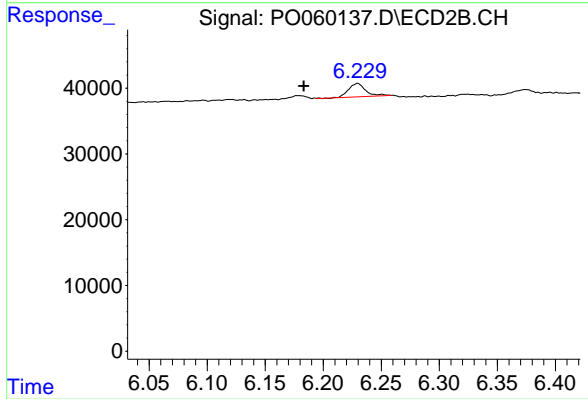
Instrument :
 ECD_O
 ClientSampleId :
 TP12-COMP



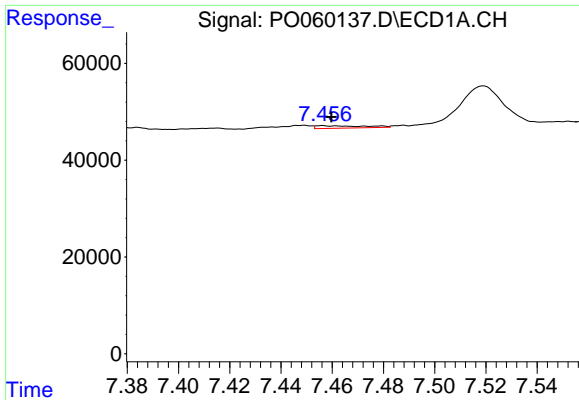
#31 AR-1260-1
 R.T.: 0.000 min
 Exp R.T. : 5.995 min
 Response: 0
 Conc: N.D.



#32 AR-1260-2
 R.T.: 7.100 min
 Delta R.T.: -0.005 min
 Response: 14490
 Conc: 3.91 ng/ml



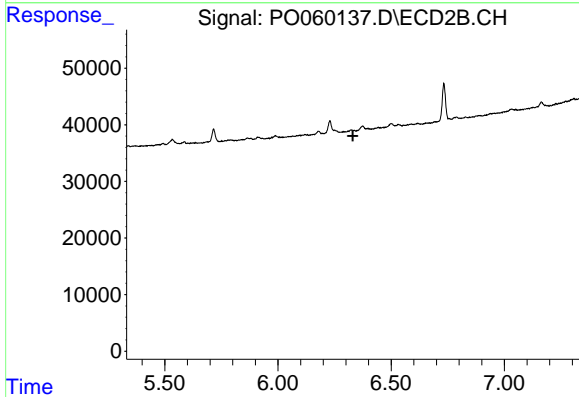
#32 AR-1260-2
 R.T.: 6.230 min
 Delta R.T.: 0.047 min
 Response: 20783
 Conc: 7.09 ng/ml



#33 AR-1260-3

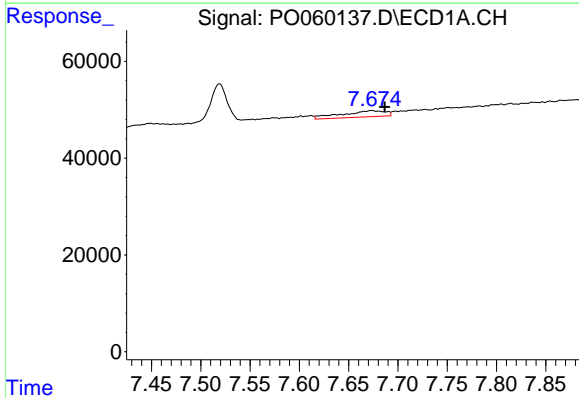
R.T.: 7.456 min
 Delta R.T.: -0.004 min
 Response: 6895
 Conc: 2.10 ng/ml

Instrument :
 ECD_O
 ClientSampled :
 TP12-COMP



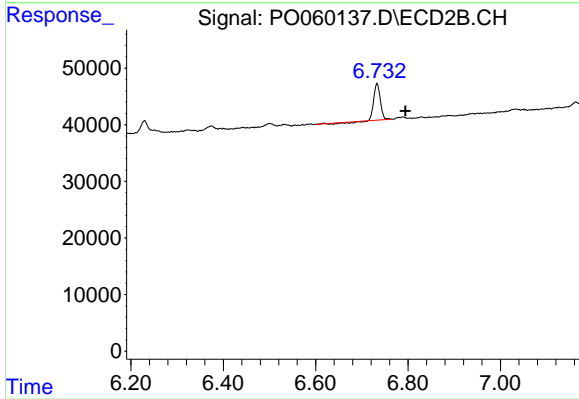
#33 AR-1260-3

R.T.: 0.000 min
 Exp R.T. : 6.331 min
 Response: 0
 Conc: N.D.



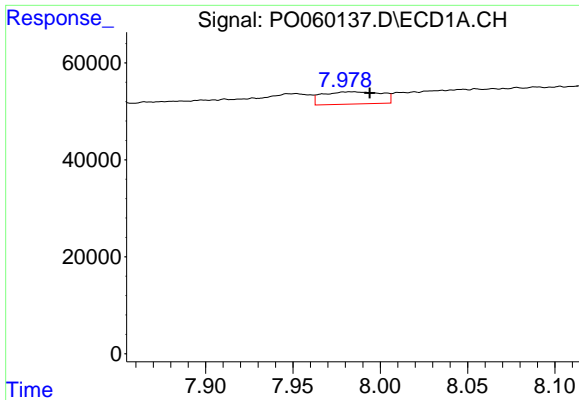
#34 AR-1260-4

R.T.: 7.674 min
 Delta R.T.: -0.013 min
 Response: 39296
 Conc: 12.79 ng/ml



#34 AR-1260-4

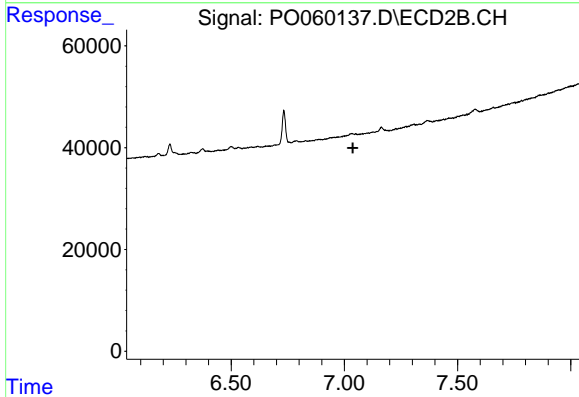
R.T.: 6.733 min
 Delta R.T.: -0.061 min
 Response: 59445
 Conc: 26.27 ng/ml



#35 AR-1260-5

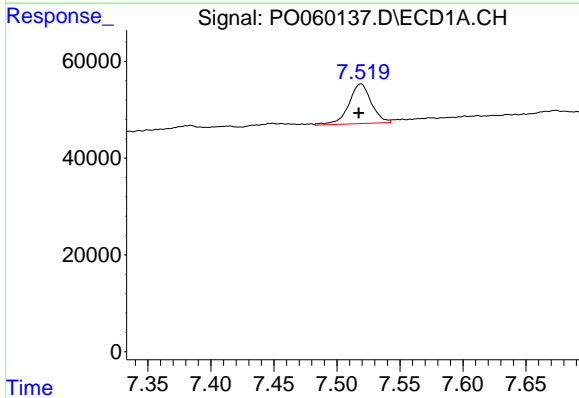
R.T.: 7.984 min
 Delta R.T.: -0.010 min
 Response: 59334
 Conc: 8.38 ng/ml

Instrument :
 ECD_O
 ClientSampleId :
 TP12-COMP



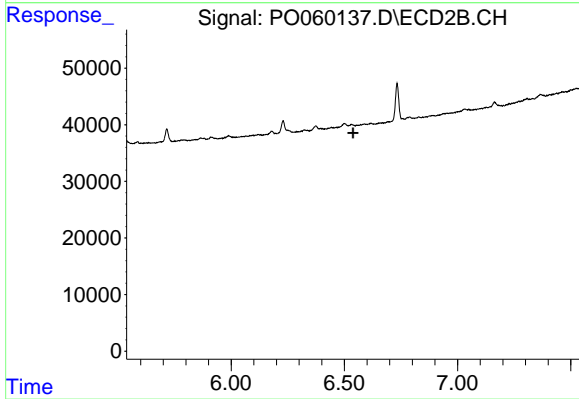
#35 AR-1260-5

R.T.: 0.000 min
 Exp R.T. : 7.037 min
 Response: 0
 Conc: N.D.



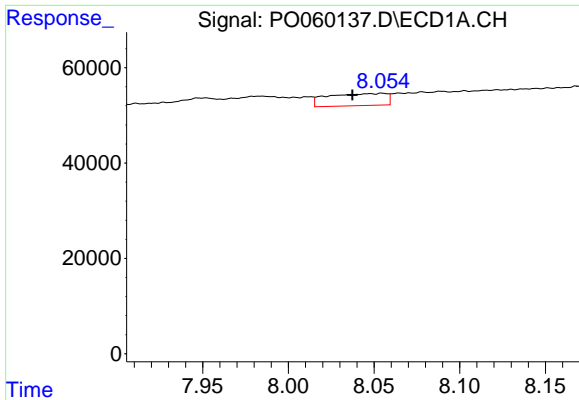
#36 AR-1262-1

R.T.: 7.519 min
 Delta R.T.: 0.002 min
 Response: 102305
 Conc: 21.08 ng/ml



#36 AR-1262-1

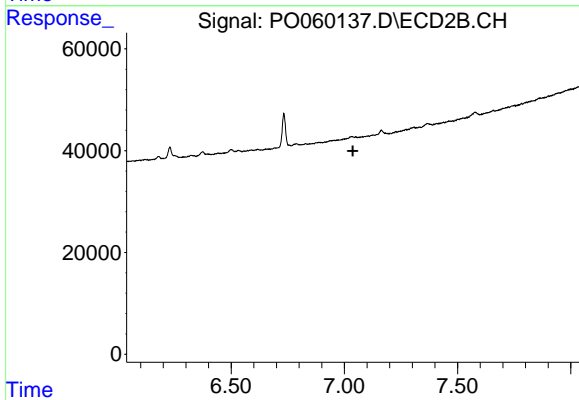
R.T.: 0.000 min
 Exp R.T. : 6.538 min
 Response: 0
 Conc: N.D.



#37 AR-1262-2

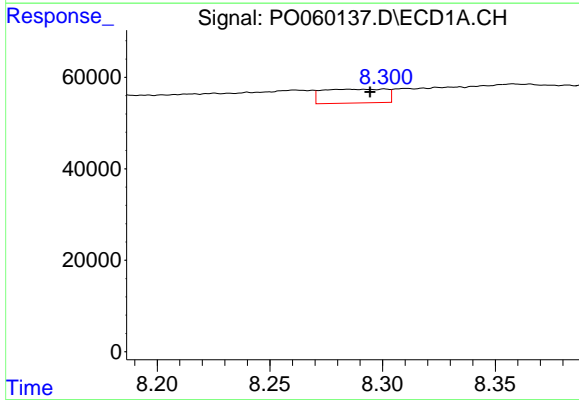
R.T.: 8.055 min
 Delta R.T.: 0.017 min
 Response: 60810
 Conc: 7.88 ng/ml

Instrument :
 ECD_O
 ClientSampleId :
 TP12-COMP



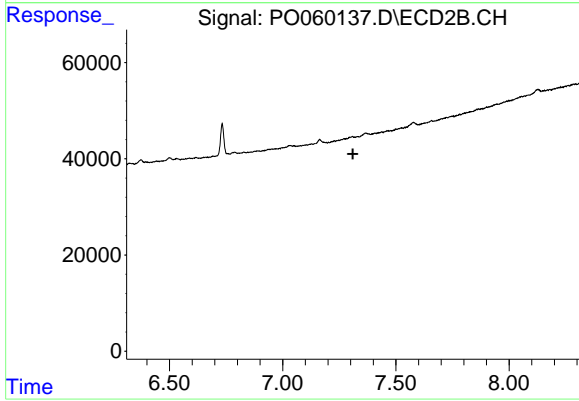
#37 AR-1262-2

R.T.: 0.000 min
 Exp R.T. : 7.037 min
 Response: 0
 Conc: N.D.



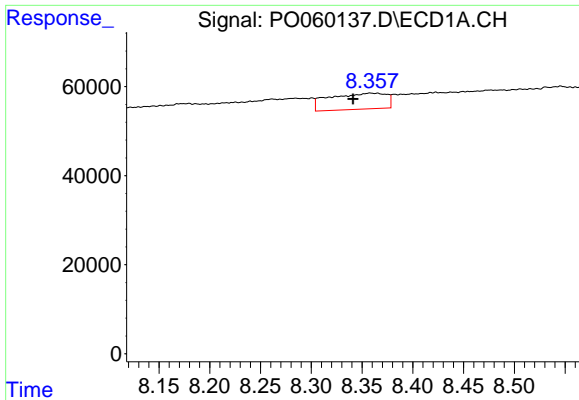
#38 AR-1262-3

R.T.: 8.285 min
 Delta R.T.: -0.010 min
 Response: 59625
 Conc: 11.69 ng/ml



#38 AR-1262-3

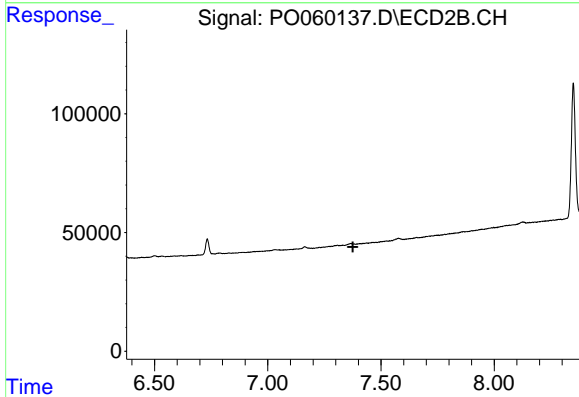
R.T.: 0.000 min
 Exp R.T. : 7.310 min
 Response: 0
 Conc: N.D.



#39 AR-1262-4

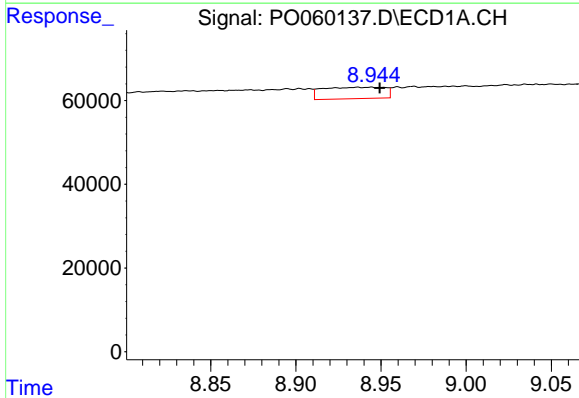
R.T.: 8.358 min
 Delta R.T.: 0.017 min
 Response: 140377
 Conc: 36.42 ng/ml

Instrument :
 ECD_O
 ClientSampleId :
 TP12-COMP



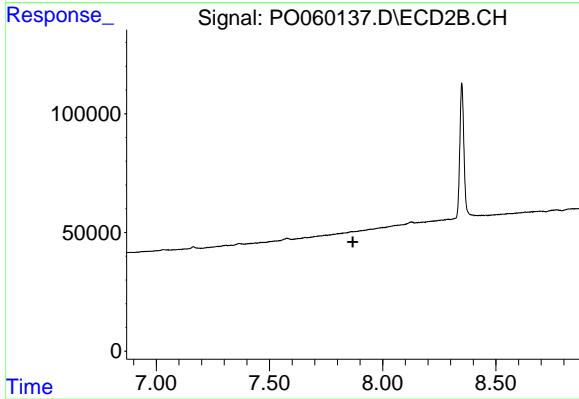
#39 AR-1262-4

R.T.: 0.000 min
 Exp R.T. : 7.376 min
 Response: 0
 Conc: N.D.



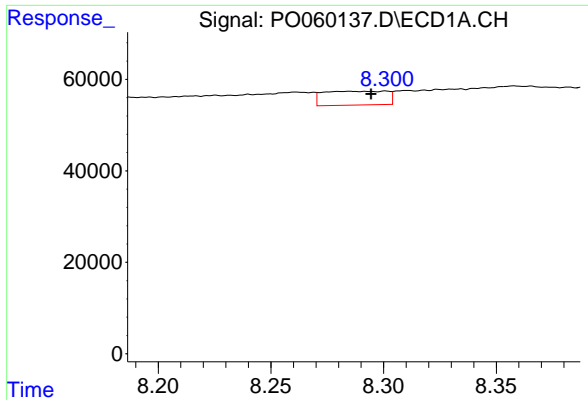
#40 AR-1262-5

R.T.: 8.944 min
 Delta R.T.: -0.005 min
 Response: 69140
 Conc: 26.94 ng/ml



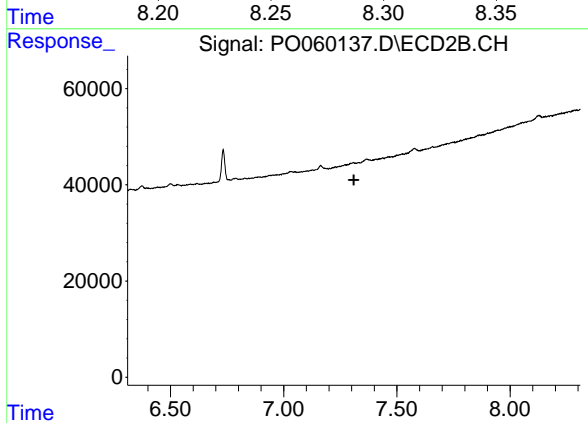
#40 AR-1262-5

R.T.: 0.000 min
 Exp R.T. : 7.868 min
 Response: 0
 Conc: N.D.

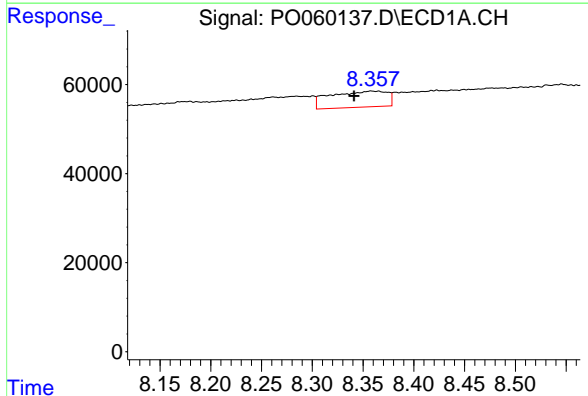


#41 AR-1268-1
 R.T.: 8.285 min
 Delta R.T.: -0.010 min
 Response: 59625
 Conc: 6.34 ng/ml

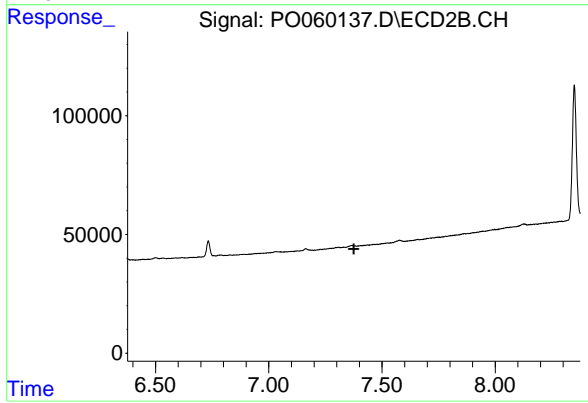
Instrument :
 ECD_O
 ClientSampleId :
 TP12-COMP



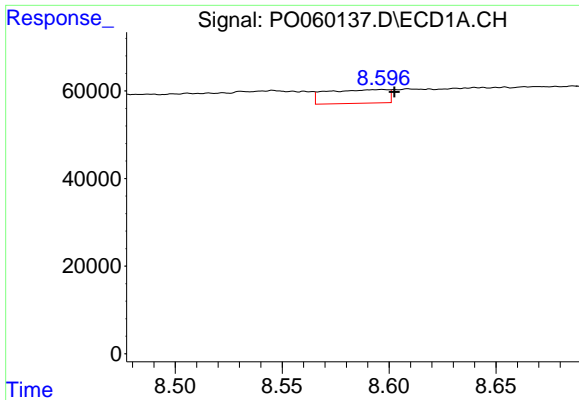
#41 AR-1268-1
 R.T.: 0.000 min
 Exp R.T. : 7.310 min
 Response: 0
 Conc: N.D.



#42 AR-1268-2
 R.T.: 8.358 min
 Delta R.T.: 0.017 min
 Response: 140377
 Conc: 17.81 ng/ml



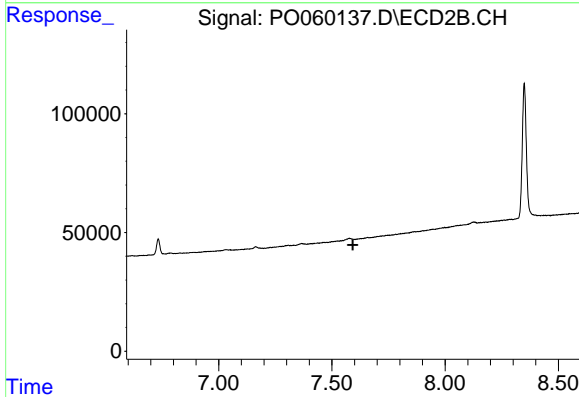
#42 AR-1268-2
 R.T.: 0.000 min
 Exp R.T. : 7.376 min
 Response: 0
 Conc: N.D.



#43 AR-1268-3

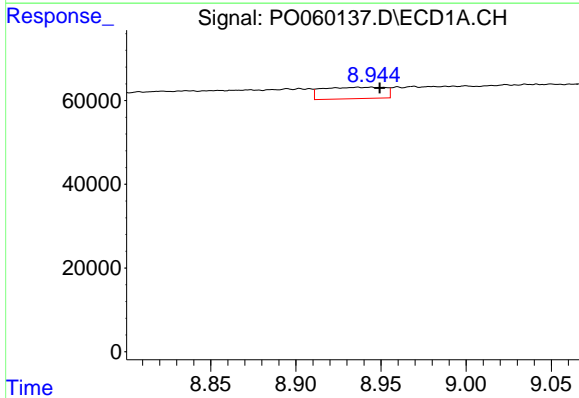
R.T.: 8.597 min
 Delta R.T.: -0.006 min
 Response: 61989
 Conc: 8.79 ng/ml

Instrument :
 ECD_O
 ClientSampleId :
 TP12-COMP



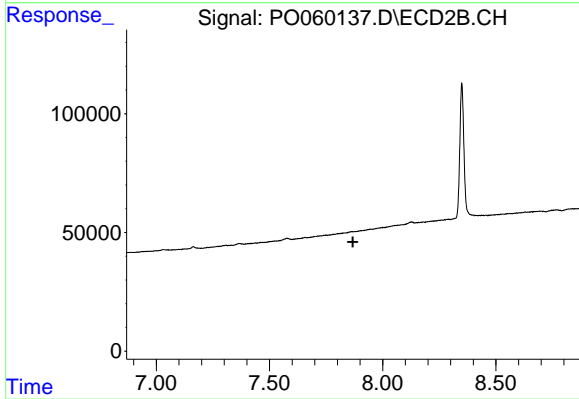
#43 AR-1268-3

R.T.: 0.000 min
 Exp R.T. : 7.592 min
 Response: 0
 Conc: N.D.



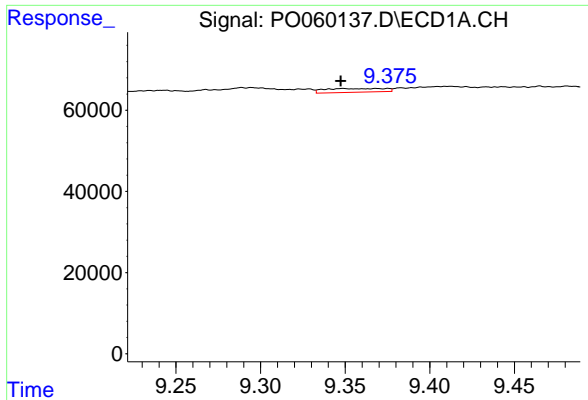
#44 AR-1268-4

R.T.: 8.944 min
 Delta R.T.: -0.005 min
 Response: 69140
 Conc: 24.87 ng/ml



#44 AR-1268-4

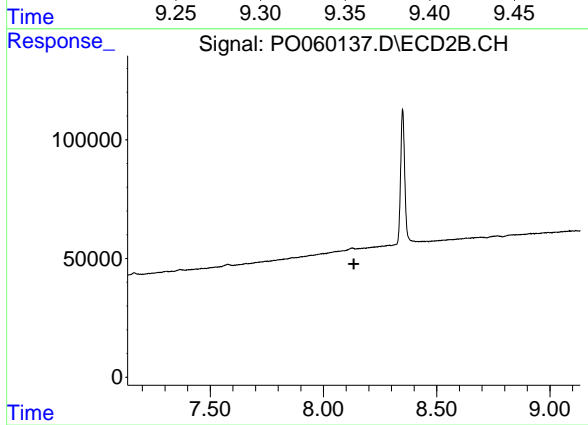
R.T.: 0.000 min
 Exp R.T. : 7.868 min
 Response: 0
 Conc: N.D.



#45 AR-1268-5

R.T.: 9.349 min
Delta R.T.: 0.001 min
Response: 22478
Conc: 1.22 ng/ml

Instrument :
ECD_O
ClientSampleId :
TP12-COMP



#45 AR-1268-5

R.T.: 8.128 min
Delta R.T.: -0.007 min
Response: -236241
Conc: N.D.