

Data Path : Z:\pestpcbsrv\HPCHEM1\ECD_0\Data\P0083019\
 Data File : P0060144.D
 Signal(s) : Signal #1: ECD1A.CH Signal #2: ECD2B.CH
 Acq On : 31 Aug 2019 5:51
 Operator : SM/AJ
 Sample : K4089-06
 Misc :
 ALS Vial : 65 Sample Multiplier: 1

Instrument :
 ECD_0
 ClientSampleId :
 OK-02-082919

Integration File signal 1: autoint1.e
 Integration File signal 2: autoint2.e
 Quant Time: Aug 31 06:23:46 2019
 Quant Method : Z:\pestpcbsrv\HPCHEM1\ECD_0\methods\P0081719.M
 Quant Title : GC EXTRACTABLES
 QLast Update : Fri Aug 30 18:12:46 2019
 Response via : Initial Calibration
 Integrator: ChemStation 6890 Scale Mode: Small noise peaks clipped

Volume Inj. : 2 µl
 Signal #1 Phase : ZB-MR1 Signal #2 Phase: ZB-MR2
 Signal #1 Info : 30Mx0.32mmx 0.50µ Signal #2 Info : 30M x 0.32mm x 0.25µm

Compound	RT#1	RT#2	Resp#1	Resp#2	ng/ml	ng/ml

System Monitoring Compounds						
1) SA Tetrachlo...	4.120	3.496	1222038	1057921	34.903	29.390
2) SA Decachlor...	9.577	8.349	1151920	866403	21.653	21.488
Target Compounds						
26) L6 AR-1254-1	6.104	5.323	178756	160579	85.676	67.704
27) L6 AR-1254-2	6.320	5.469	197958	95638	59.336	45.579
28) L6 AR-1254-3	6.684	5.864	219315	196460	61.806	58.427
29) L6 AR-1254-4	6.966	6.090	120657	66787	40.963	32.392
30) L6 AR-1254-5	7.380	6.498	235650	178642	76.203	57.534

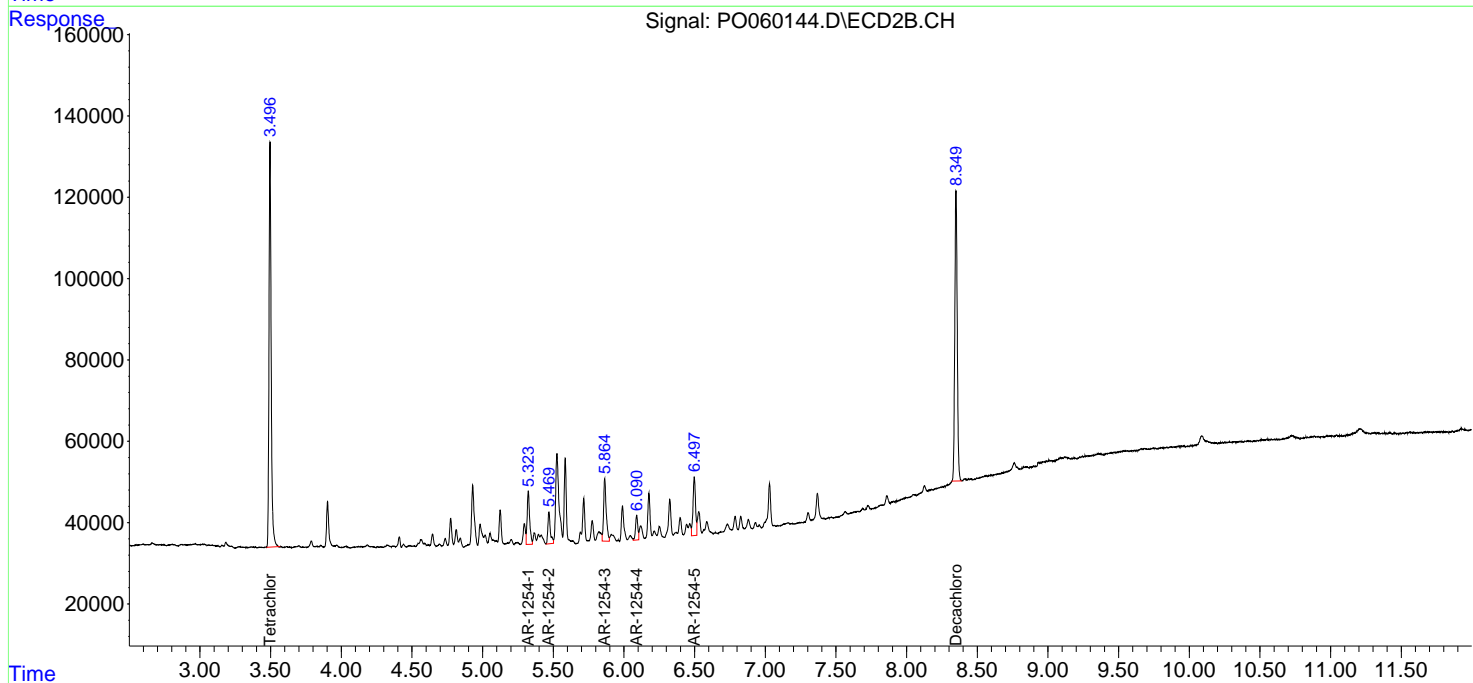
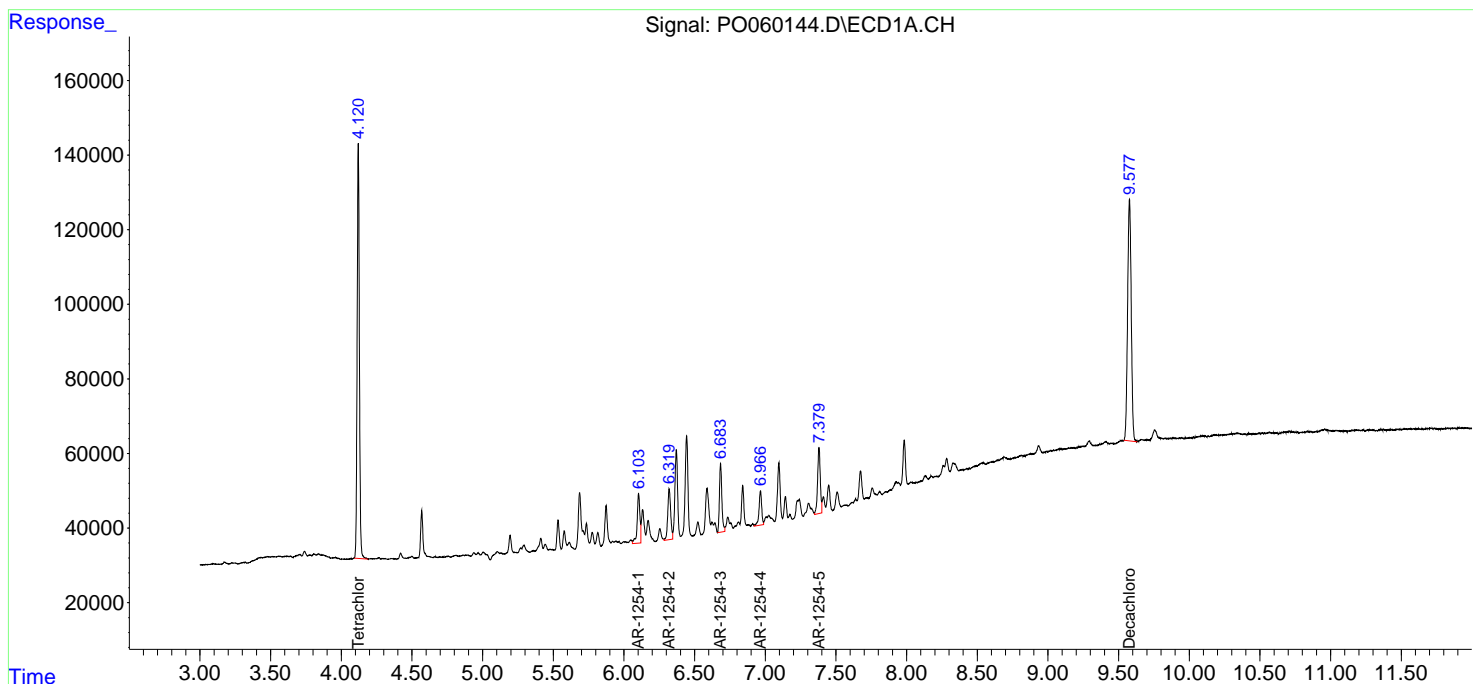
(f)=RT Delta > 1/2 Window (#)=Amounts differ by > 25% (m)=manual int.

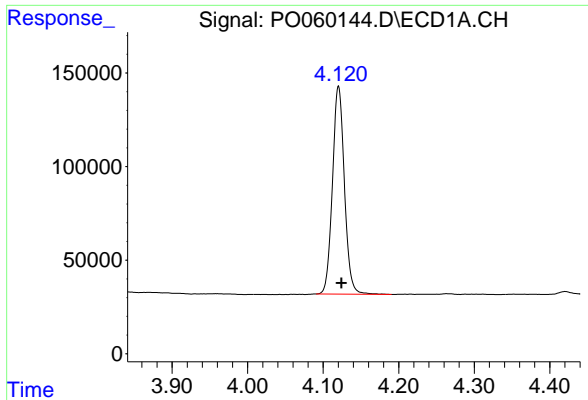
Data Path : Z:\pestpcbsrv\HPCHEM1\ECD_O\Data\P0083019\
 Data File : P0060144.D
 Signal(s) : Signal #1: ECD1A.CH Signal #2: ECD2B.CH
 Acq On : 31 Aug 2019 5:51
 Operator : SM/AJ
 Sample : K4089-06
 Misc :
 ALS Vial : 65 Sample Multiplier: 1

Instrument :
 ECD_O
 ClientSampled :
 OK-02-082919

Integration File signal 1: autoint1.e
 Integration File signal 2: autoint2.e
 Quant Time: Aug 31 06:23:46 2019
 Quant Method : Z:\pestpcbsrv\HPCHEM1\ECD_O\methods\P0081719.M
 Quant Title : GC EXTRACTABLES
 QLast Update : Fri Aug 30 18:12:46 2019
 Response via : Initial Calibration
 Integrator: ChemStation 6890 Scale Mode: Small noise peaks clipped

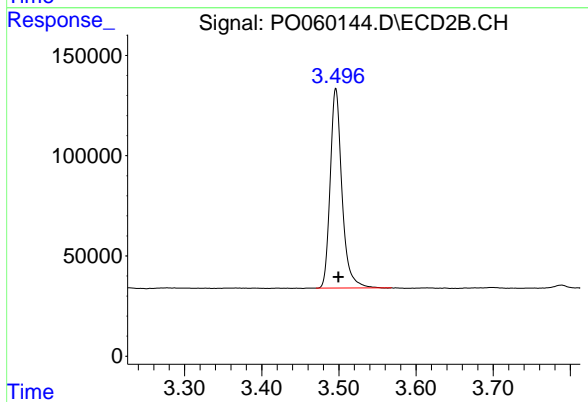
Volume Inj. : 2 µl
 Signal #1 Phase : ZB-MR1 Signal #2 Phase: ZB-MR2
 Signal #1 Info : 30Mx0.32mmx 0.50µ Signal #2 Info : 30M x 0.32mm x 0.25µm



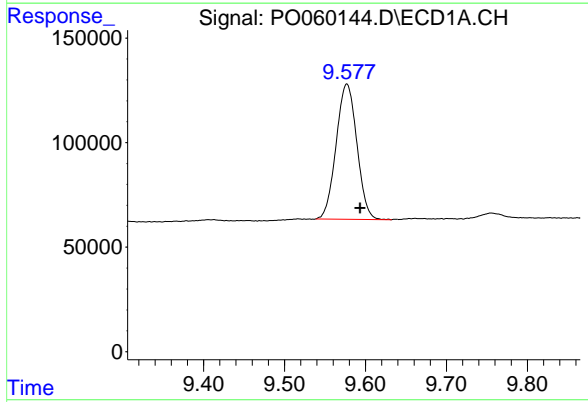


#1 Tetrachloro-m-xylene
 R.T.: 4.120 min
 Delta R.T.: -0.004 min
 Response: 1222038
 Conc: 34.90 ng/ml

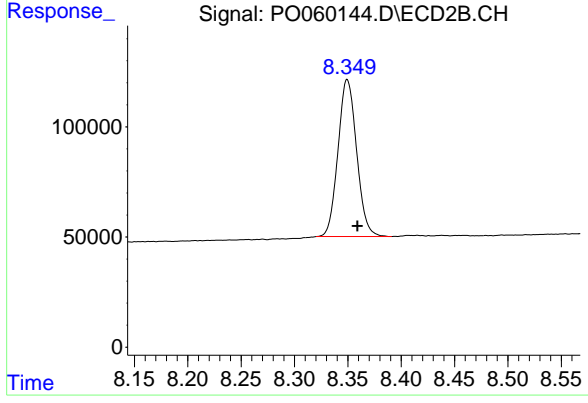
Instrument :
 ECD_O
 ClientSampleId :
 OK-02-082919



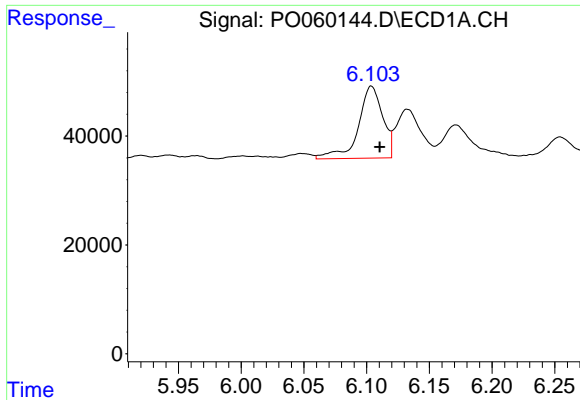
#1 Tetrachloro-m-xylene
 R.T.: 3.496 min
 Delta R.T.: -0.003 min
 Response: 1057921
 Conc: 29.39 ng/ml



#2 Decachlorobiphenyl
 R.T.: 9.577 min
 Delta R.T.: -0.016 min
 Response: 1151920
 Conc: 21.65 ng/ml



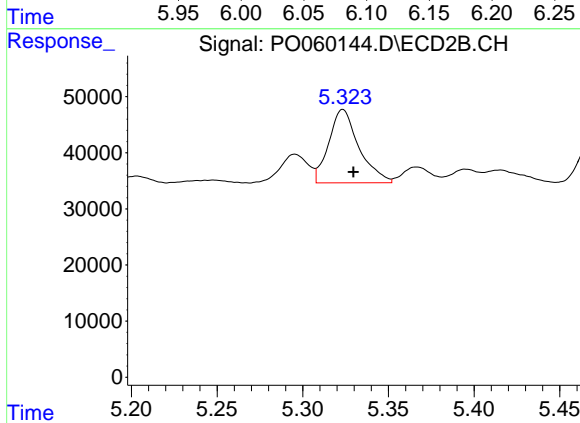
#2 Decachlorobiphenyl
 R.T.: 8.349 min
 Delta R.T.: -0.010 min
 Response: 866403
 Conc: 21.49 ng/ml



#26 AR-1254-1

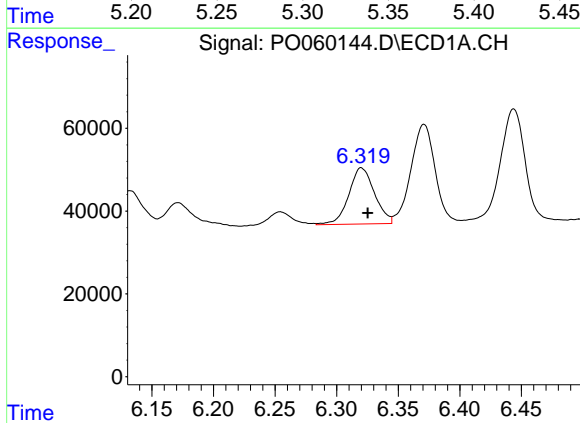
R.T.: 6.104 min
 Delta R.T.: -0.007 min
 Response: 178756
 Conc: 85.68 ng/ml

Instrument :
 ECD_O
 ClientSampleId :
 OK-02-082919



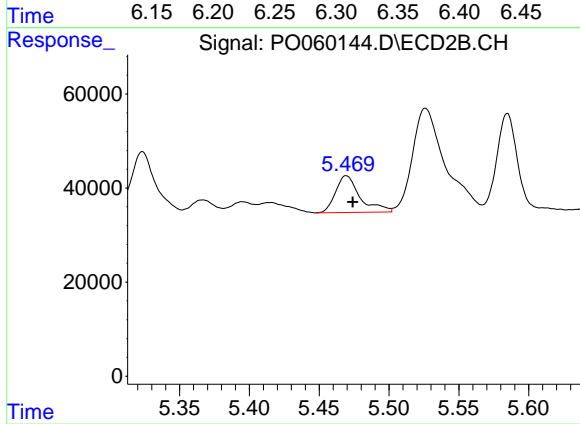
#26 AR-1254-1

R.T.: 5.323 min
 Delta R.T.: -0.006 min
 Response: 160579
 Conc: 67.70 ng/ml



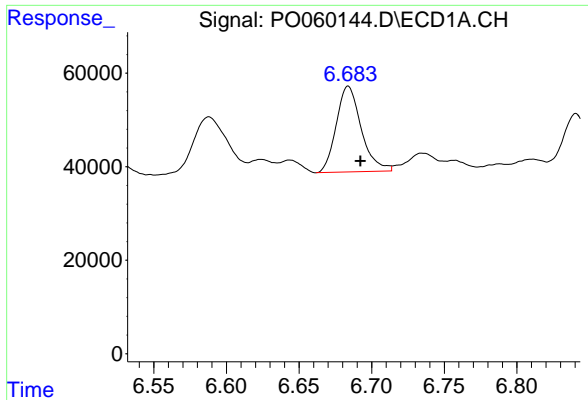
#27 AR-1254-2

R.T.: 6.320 min
 Delta R.T.: -0.005 min
 Response: 197958
 Conc: 59.34 ng/ml



#27 AR-1254-2

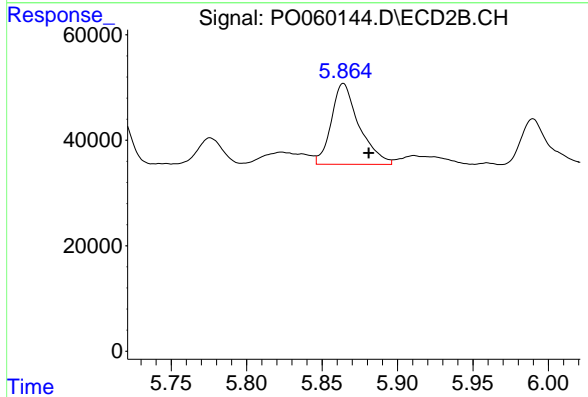
R.T.: 5.469 min
 Delta R.T.: -0.005 min
 Response: 95638
 Conc: 45.58 ng/ml



#28 AR-1254-3

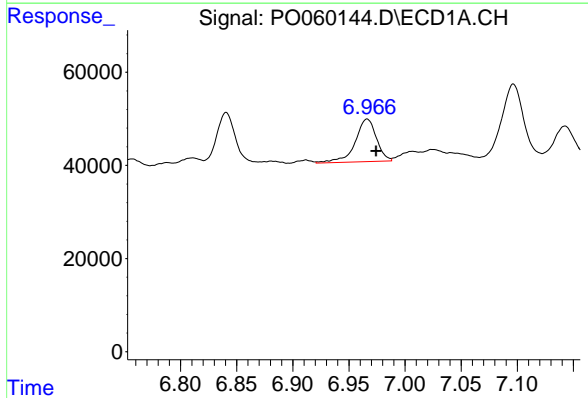
R.T.: 6.684 min
 Delta R.T.: -0.008 min
 Response: 219315
 Conc: 61.81 ng/ml

Instrument :
 ECD_O
 ClientSampleId :
 OK-02-082919



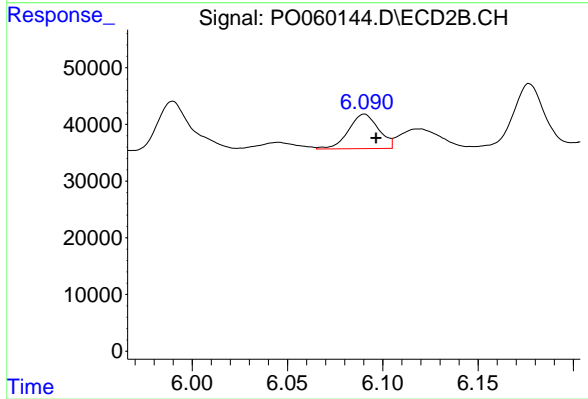
#28 AR-1254-3

R.T.: 5.864 min
 Delta R.T.: -0.017 min
 Response: 196460
 Conc: 58.43 ng/ml



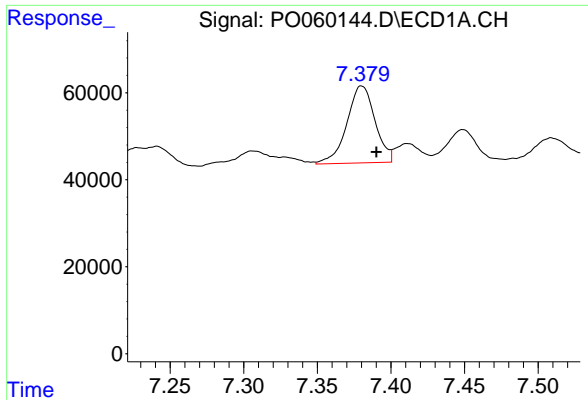
#29 AR-1254-4

R.T.: 6.966 min
 Delta R.T.: -0.008 min
 Response: 120657
 Conc: 40.96 ng/ml



#29 AR-1254-4

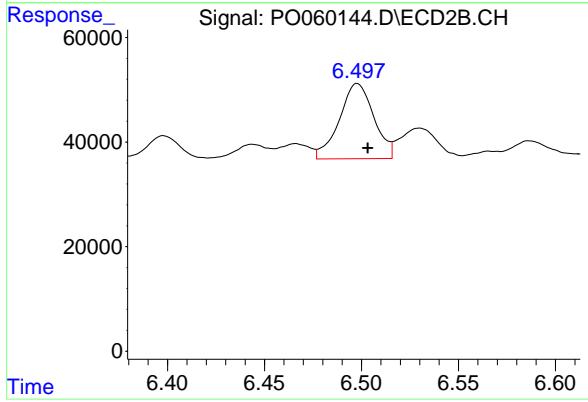
R.T.: 6.090 min
 Delta R.T.: -0.006 min
 Response: 66787
 Conc: 32.39 ng/ml



#30 AR-1254-5

R.T.: 7.380 min
Delta R.T.: -0.010 min
Response: 235650
Conc: 76.20 ng/ml

Instrument :
ECD_O
ClientSampled :
OK-02-082919



#30 AR-1254-5

R.T.: 6.498 min
Delta R.T.: -0.005 min
Response: 178642
Conc: 57.53 ng/ml