

Data Path : Z:\pestpcbsrv\HPCHEM1\ECD_O\Data\P0083023\
 Data File : P0097554.D
 Signal(s) : Signal #1: ECD1A.ch Signal #2: ECD2B.ch
 Acq On : 30 Aug 2023 20:30
 Operator : YP/AJ
 Sample : AR1660CCC500
 Misc :
 ALS Vial : 3 Sample Multiplier: 1

Instrument :
 ECD_O
 ClientSampleId :

Integration File signal 1: autoint1.e
 Integration File signal 2: autoint2.e
 Quant Time: Aug 31 01:21:33 2023
 Quant Method : Z:\pestpcbsrv\HPCHEM1\ECD_O\methods\P0082823.M
 Quant Title : GC EXTRACTABLES
 QLast Update : Tue Aug 29 10:29:21 2023
 Response via : Initial Calibration
 Integrator: ChemStation

Volume Inj. : 2 µl
 Signal #1 Phase : ZB-MR1 Signal #2 Phase: ZB-MR2
 Signal #1 Info : 30Mx0.32mmx 0.50µ Signal #2 Info : 30M x 0.32mm x 0.25µm

Compound	RT#1	RT#2	Resp#1	Resp#2	ng/ml	ng/ml
System Monitoring Compounds						
1) SA Tetrachlo...	4.447	3.628	150.7E6	33403322	45.163	49.513
2) SA Decachlor...	10.306	8.676	79800895	27556680	43.480	48.005
Target Compounds						
3) L1 AR-1016-1	5.624	4.720	43262745	11797250	480.653	541.937
4) L1 AR-1016-2	5.647	4.739	63655007	16308822	458.752	540.482
5) L1 AR-1016-3	5.710	4.916	42544620	8792396	469.236	544.307
6) L1 AR-1016-4	5.810	4.959	33193155	7205895	478.738	502.180
7) L1 AR-1016-5	6.107	5.174	30998395	9424892	436.417	515.353
8) L2 AR-1221-1	4.652	3.843	5795229	1262600	143.994	154.235
9) L2 AR-1221-2	4.744	3.929	7817566	1590013	260.071	274.342
10) L2 AR-1221-3	4.821	4.006	26880162	6036163	301.749	328.266
11) L3 AR-1232-1	4.821	4.006	26880162	6036163	364.451	400.644
12) L3 AR-1232-2	5.354	4.739	35356381	16308822	922.628	1168.235 #
13) L3 AR-1232-3	5.647	4.916	63655007	8792396	984.211	1251.850 #
14) L3 AR-1232-4	5.810	5.001	33193155	8924258	1042.042	1262.169
15) L3 AR-1232-5	5.901	5.174	30298945	9424892	1029.726	1197.396
16) L4 AR-1242-1	5.624	4.720	43262745	11797250	534.170	611.567
17) L4 AR-1242-2	5.647	4.739	63655007	16308822	509.700	599.157
18) L4 AR-1242-3	5.710	4.916	42544620	8792396	517.452	612.681
19) L4 AR-1242-4	5.810	5.001	33193155	8924258	528.767	563.456
20) L4 AR-1242-5	6.554	5.528	9983102	9064260	158.725	513.608 #
21) L5 AR-1248-1	5.624	4.720	43262745	11797250	733.536	858.498
22) L5 AR-1248-2	5.901	4.959	30298945	7205895	306.346	324.971
23) L5 AR-1248-3	6.107	5.001	30998395	8924258	299.194	388.136 #
24) L5 AR-1248-4	6.514	5.174	8965510	9424892	98.006	347.309 #
25) L5 AR-1248-5	6.554	5.569	9983102	2113639	98.338	93.492
26) L6 AR-1254-1	6.488	5.528	25599386	9064260	232.845	234.853
27) L6 AR-1254-2	6.708	5.677	22270810	6566694	136.664	192.793 #
28) L6 AR-1254-3	7.079	6.099	10853611	11984172	66.646	225.863 #
29) L6 AR-1254-4	7.368	6.312	6153993	852790	63.138	31.274 #
30) L6 AR-1254-5	7.791	6.732	63084850	21451521	558.653	486.550
31) L7 AR-1260-1	7.245	6.214	53165528	17885251	416.509	478.864
32) L7 AR-1260-2	7.505	6.403	58576915	21175595	429.871	500.436
33) L7 AR-1260-3	7.869	6.558	42561923	19633514	402.675	469.050
34) L7 AR-1260-4	8.098	7.033	47070387	15476447	416.095	478.509
35) L7 AR-1260-5	8.426	7.275	86281131	33656703	458.994	509.735
36) L8 AR-1262-1	7.869	6.825	42561923	8326126	282.837	414.878 #
37) L8 AR-1262-2	8.426	7.033	86281131	15476447	394.000	354.223
38) L8 AR-1262-3	8.759	7.561	55595699	7596057	358.602	243.735 #
39) L8 AR-1262-4	8.838	7.624	15273317	23868312	122.519	424.333 #
40) L8 AR-1262-5	9.520	8.122	18838004	8161390	273.929	346.919 #
41) L9 AR-1268-1	8.759	7.561	55595699	7596057	195.751	79.356 #

Data Path : Z:\pestpcbsrv\HPCHEM1\ECD_0\Data\P0083023\
 Data File : P0097554.D
 Signal(s) : Signal #1: ECD1A.ch Signal #2: ECD2B.ch
 Acq On : 30 Aug 2023 20:30
 Operator : YP/AJ
 Sample : AR1660CCC500
 Misc :
 ALS Vial : 3 Sample Multiplier: 1

Instrument :
 ECD_0
 ClientSampleId :

Integration File signal 1: autoint1.e
 Integration File signal 2: autoint2.e
 Quant Time: Aug 31 01:21:33 2023
 Quant Method : Z:\pestpcbsrv\HPCHEM1\ECD_0\methods\P0082823.M
 Quant Title : GC EXTRACTABLES
 QLast Update : Tue Aug 29 10:29:21 2023
 Response via : Initial Calibration
 Integrator: ChemStation

Volume Inj. : 2 µl
 Signal #1 Phase : ZB-MR1 Signal #2 Phase: ZB-MR2
 Signal #1 Info : 30Mx0.32mmx 0.50µ Signal #2 Info : 30M x 0.32mm x 0.25µm

	Compound	RT#1	RT#2	Resp#1	Resp#2	ng/ml	ng/ml
42)	L9 AR-1268-2	8.838	7.624	15273317	23868312	60.113	287.935 #
43)	L9 AR-1268-3	9.078	7.925	1106855	316542	4.908	15.976 #
44)	L9 AR-1268-4	9.520	8.122	18838004	8161390	244.748	315.814 #
45)	L9 AR-1268-5	9.952	8.417	6557201	2614516	9.496	11.469

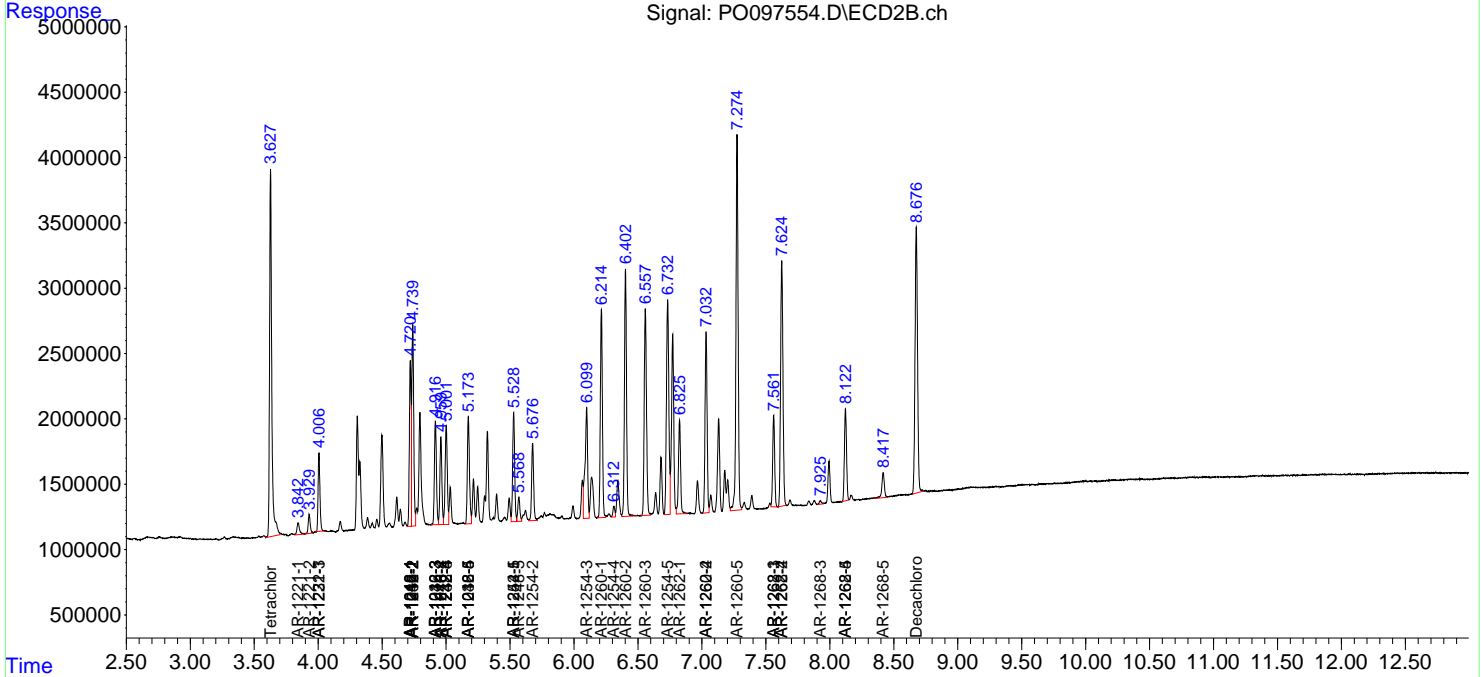
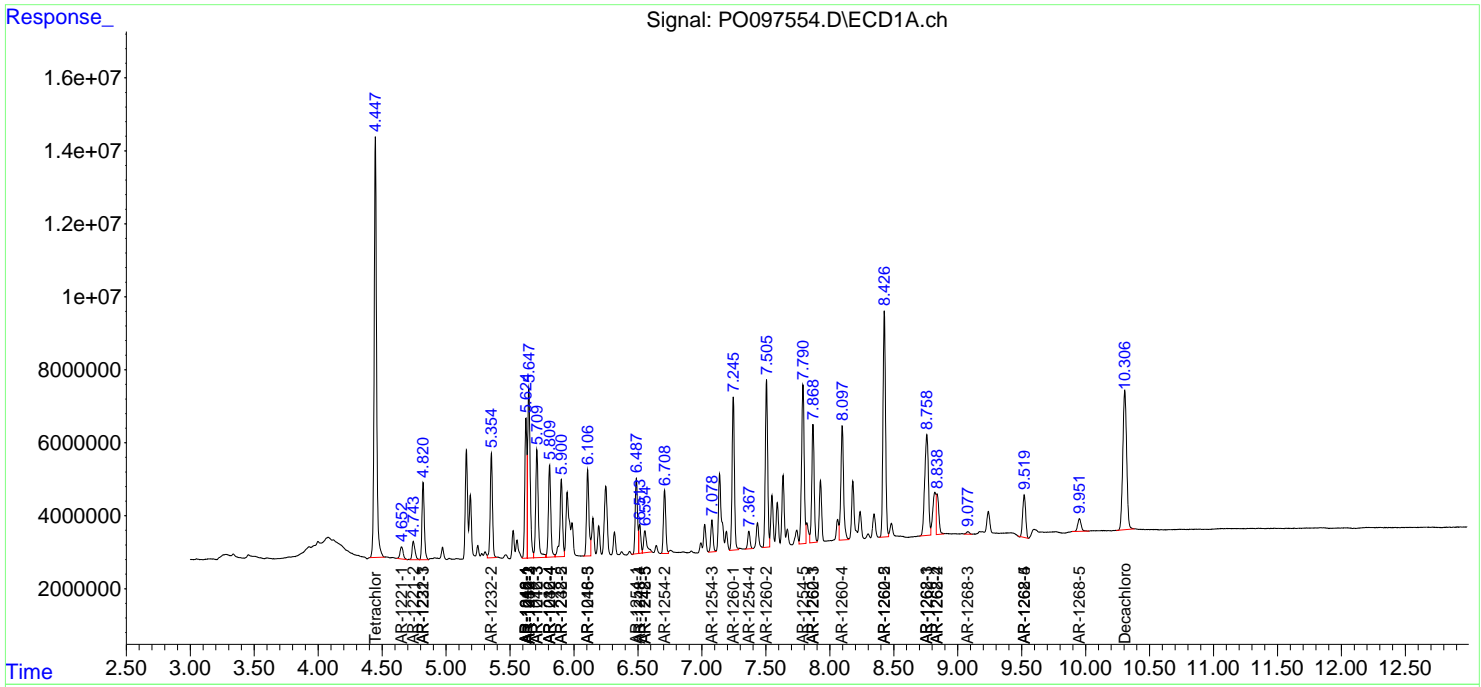
(f)=RT Delta > 1/2 Window (#)=Amounts differ by > 25% (m)=manual int.

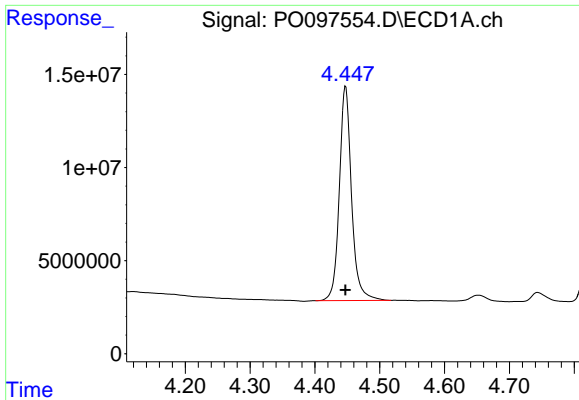
Data Path : Z:\pestpcbsrv\HPCHEM1\ECD_O\Data\PO083023\
 Data File : PO097554.D
 Signal(s) : Signal #1: ECD1A.ch Signal #2: ECD2B.ch
 Acq On : 30 Aug 2023 20:30
 Operator : YP/AJ
 Sample : AR1660CCC500
 Misc :
 ALS Vial : 3 Sample Multiplier: 1

Instrument :
 ECD_O
 ClientSampleId :

Integration File signal 1: autoint1.e
 Integration File signal 2: autoint2.e
 Quant Time: Aug 31 01:21:33 2023
 Quant Method : Z:\pestpcbsrv\HPCHEM1\ECD_O\methods\PO082823.M
 Quant Title : GC EXTRACTABLES
 QLast Update : Tue Aug 29 10:29:21 2023
 Response via : Initial Calibration
 Integrator: ChemStation

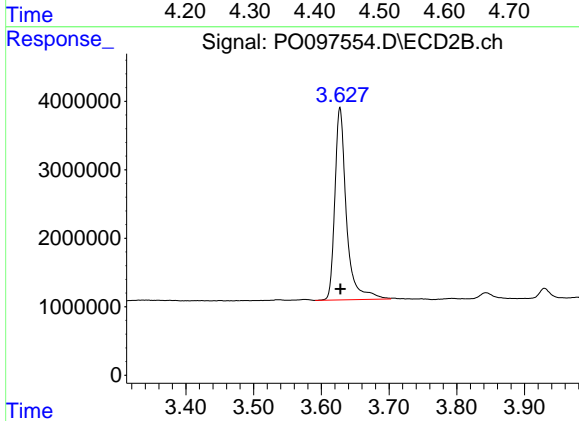
Volume Inj. : 2 µl
 Signal #1 Phase : ZB-MR1 Signal #2 Phase: ZB-MR2
 Signal #1 Info : 30Mx0.32mmx 0.50µ Signal #2 Info : 30M x 0.32mm x 0.25µm



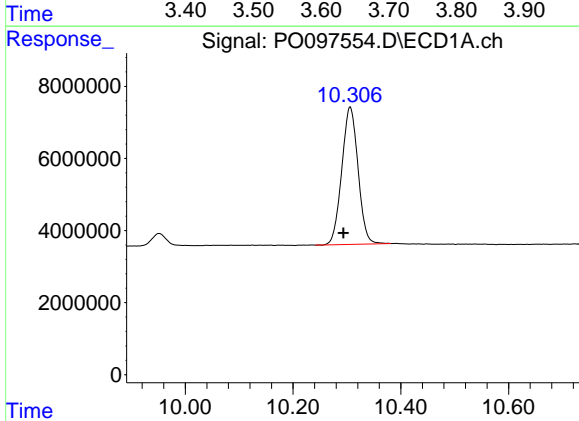


#1 Tetrachloro-m-xylene
 R.T.: 4.447 min
 Delta R.T.: 0.000 min
 Response: 150735557
 Conc: 45.16 ng/ml

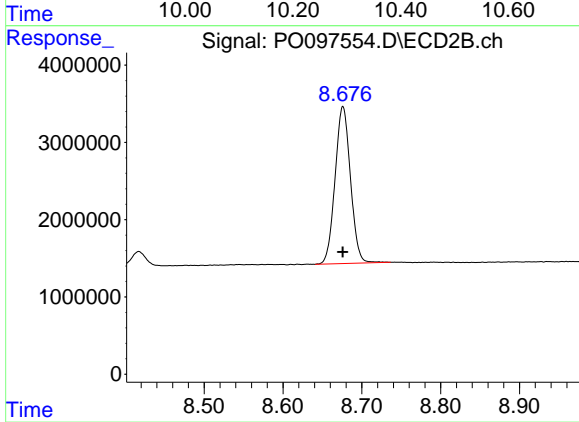
Instrument :
 ECD_O
 ClientSampleId :



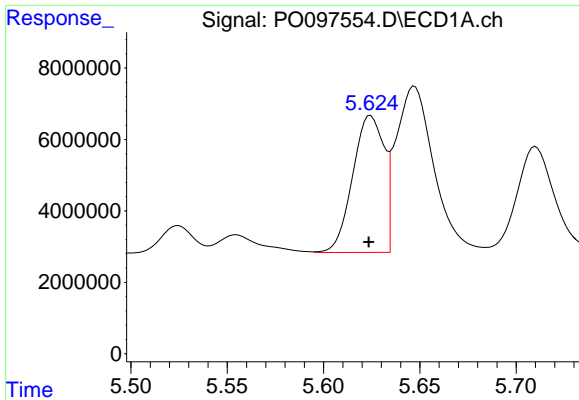
#1 Tetrachloro-m-xylene
 R.T.: 3.628 min
 Delta R.T.: 0.000 min
 Response: 33403322
 Conc: 49.51 ng/ml



#2 Decachlorobiphenyl
 R.T.: 10.306 min
 Delta R.T.: 0.013 min
 Response: 79800895
 Conc: 43.48 ng/ml



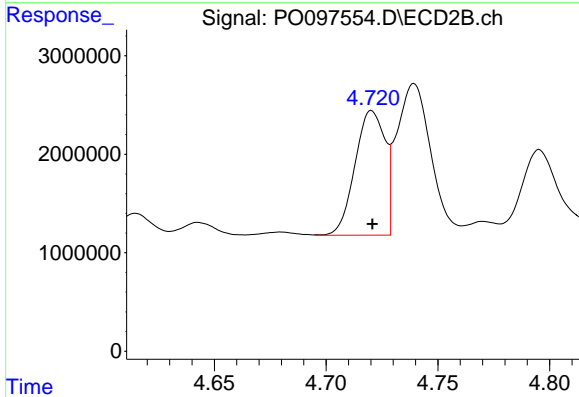
#2 Decachlorobiphenyl
 R.T.: 8.676 min
 Delta R.T.: 0.000 min
 Response: 27556680
 Conc: 48.00 ng/ml



#3 AR-1016-1

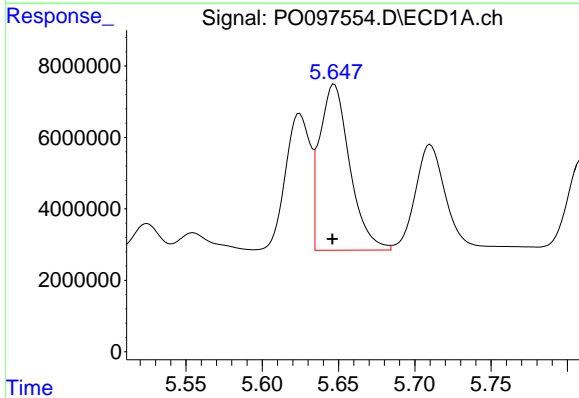
R.T.: 5.624 min
 Delta R.T.: 0.000 min
 Response: 43262745
 Conc: 480.65 ng/ml

Instrument :
 ECD_O
 ClientSampleId :



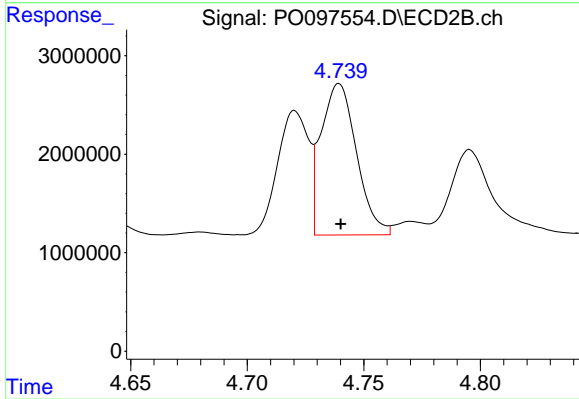
#3 AR-1016-1

R.T.: 4.720 min
 Delta R.T.: 0.000 min
 Response: 11797250
 Conc: 541.94 ng/ml



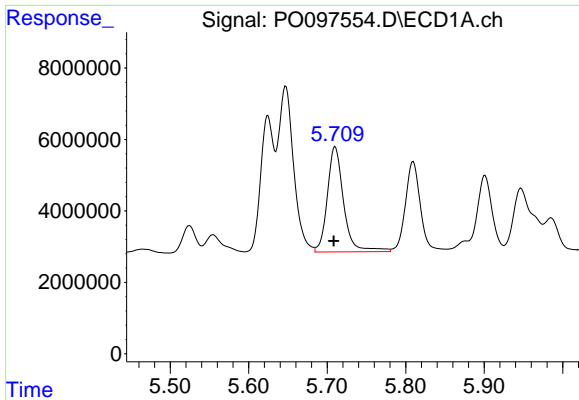
#4 AR-1016-2

R.T.: 5.647 min
 Delta R.T.: 0.001 min
 Response: 63655007
 Conc: 458.75 ng/ml



#4 AR-1016-2

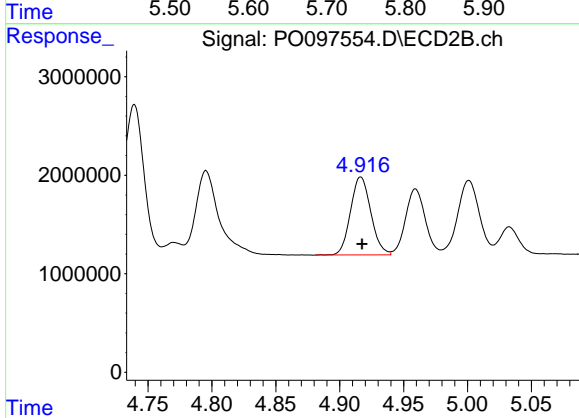
R.T.: 4.739 min
 Delta R.T.: 0.000 min
 Response: 16308822
 Conc: 540.48 ng/ml



#5 AR-1016-3

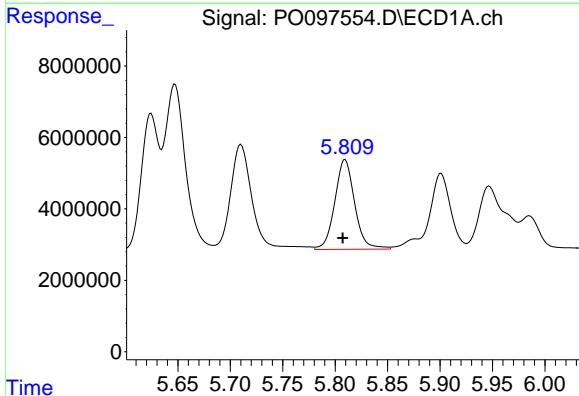
R.T.: 5.710 min
 Delta R.T.: 0.002 min
 Response: 42544620
 Conc: 469.24 ng/ml

Instrument :
 ECD_O
 ClientSampleId :



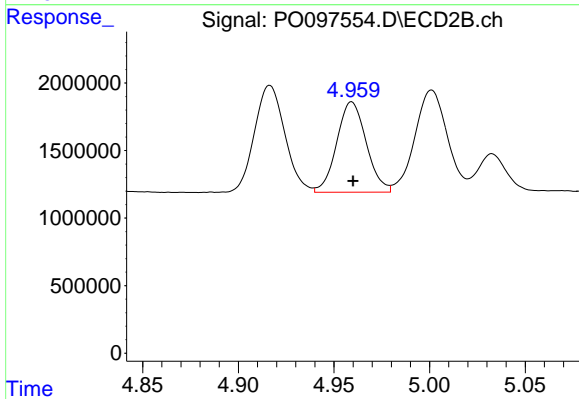
#5 AR-1016-3

R.T.: 4.916 min
 Delta R.T.: 0.000 min
 Response: 8792396
 Conc: 544.31 ng/ml



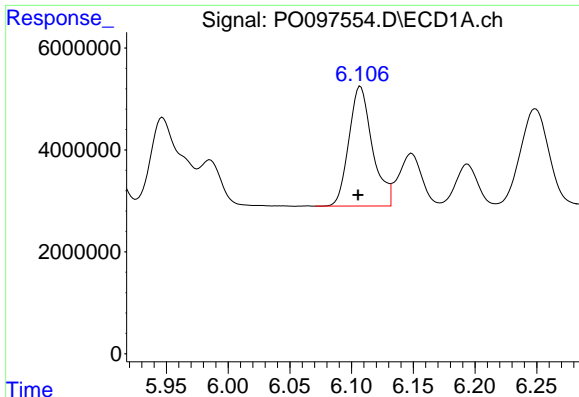
#6 AR-1016-4

R.T.: 5.810 min
 Delta R.T.: 0.002 min
 Response: 33193155
 Conc: 478.74 ng/ml



#6 AR-1016-4

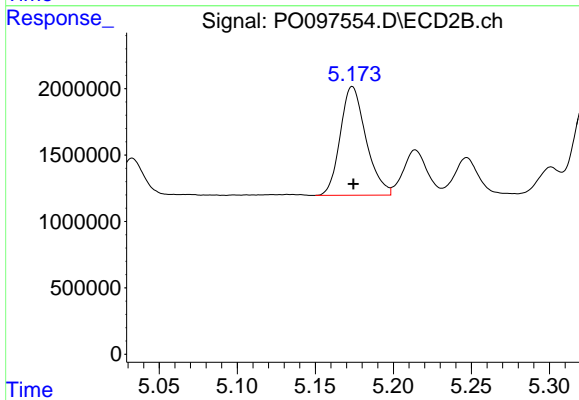
R.T.: 4.959 min
 Delta R.T.: 0.000 min
 Response: 7205895
 Conc: 502.18 ng/ml



#7 AR-1016-5

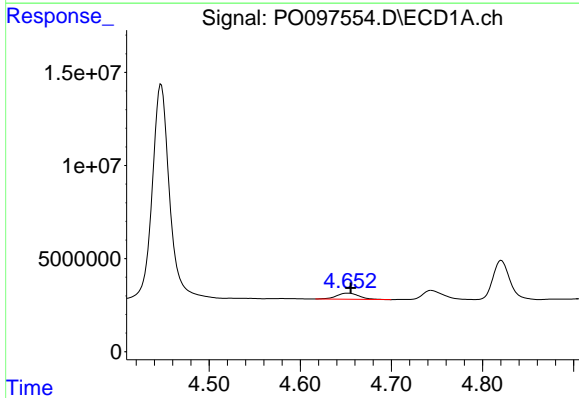
R.T.: 6.107 min
 Delta R.T.: 0.002 min
 Response: 30998395
 Conc: 436.42 ng/ml

Instrument :
 ECD_O
 ClientSampleId :



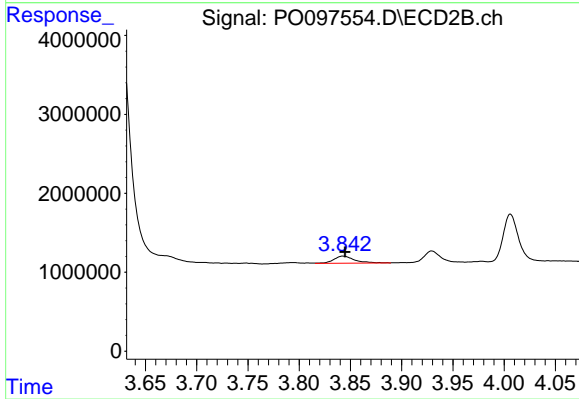
#7 AR-1016-5

R.T.: 5.174 min
 Delta R.T.: 0.000 min
 Response: 9424892
 Conc: 515.35 ng/ml



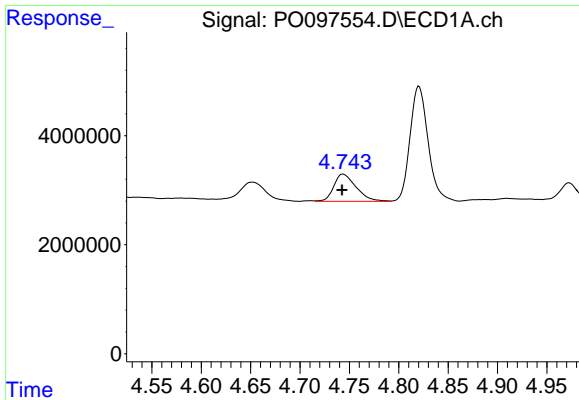
#8 AR-1221-1

R.T.: 4.652 min
 Delta R.T.: -0.003 min
 Response: 5795229
 Conc: 143.99 ng/ml



#8 AR-1221-1

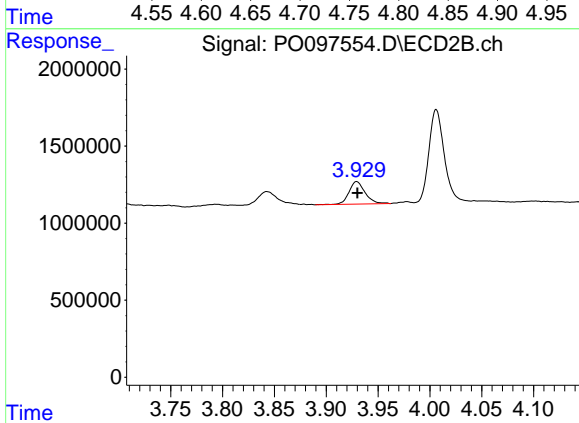
R.T.: 3.843 min
 Delta R.T.: -0.002 min
 Response: 1262600
 Conc: 154.23 ng/ml



#9 AR-1221-2

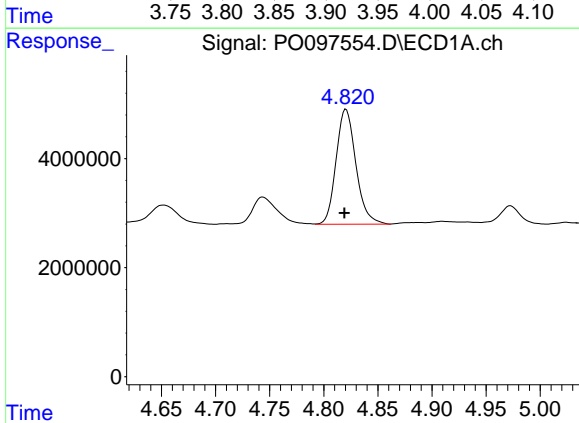
R.T.: 4.744 min
 Delta R.T.: 0.000 min
 Response: 7817566
 Conc: 260.07 ng/ml

Instrument :
 ECD_O
 ClientSampleId :



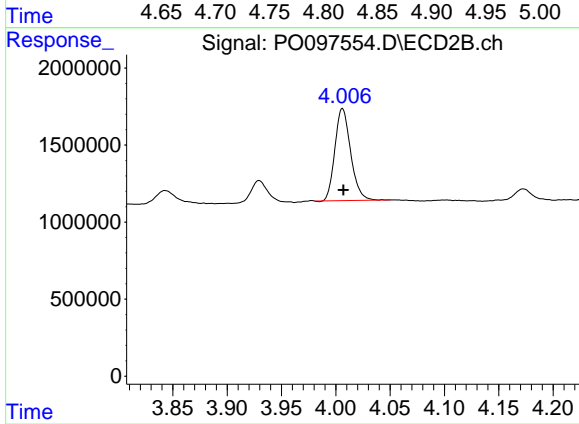
#9 AR-1221-2

R.T.: 3.929 min
 Delta R.T.: 0.000 min
 Response: 1590013
 Conc: 274.34 ng/ml



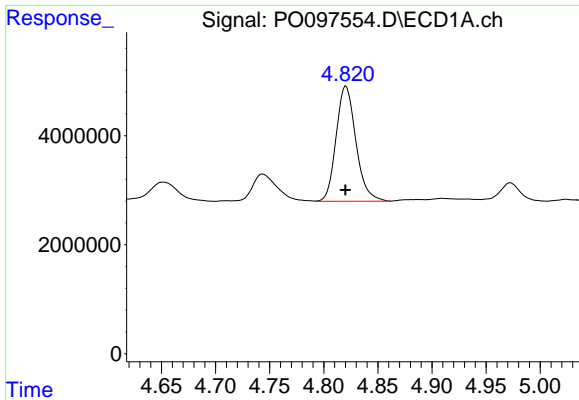
#10 AR-1221-3

R.T.: 4.821 min
 Delta R.T.: 0.001 min
 Response: 26880162
 Conc: 301.75 ng/ml



#10 AR-1221-3

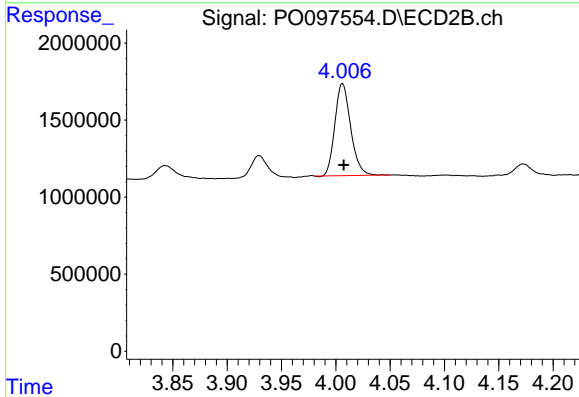
R.T.: 4.006 min
 Delta R.T.: 0.000 min
 Response: 6036163
 Conc: 328.27 ng/ml



#11 AR-1232-1

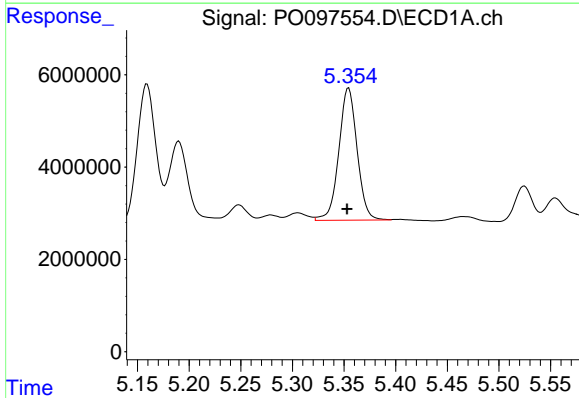
R.T.: 4.821 min
 Delta R.T.: 0.000 min
 Response: 26880162
 Conc: 364.45 ng/ml

Instrument :
 ECD_O
 ClientSampleId :



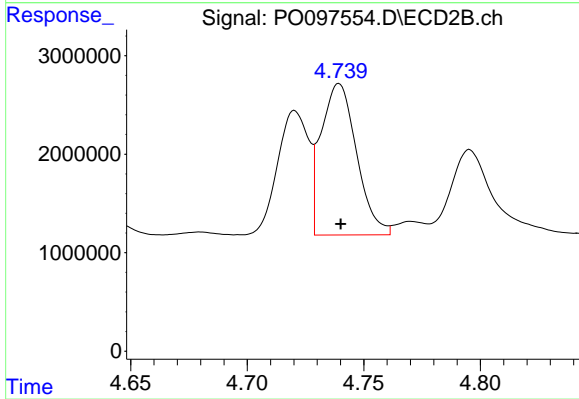
#11 AR-1232-1

R.T.: 4.006 min
 Delta R.T.: -0.001 min
 Response: 6036163
 Conc: 400.64 ng/ml



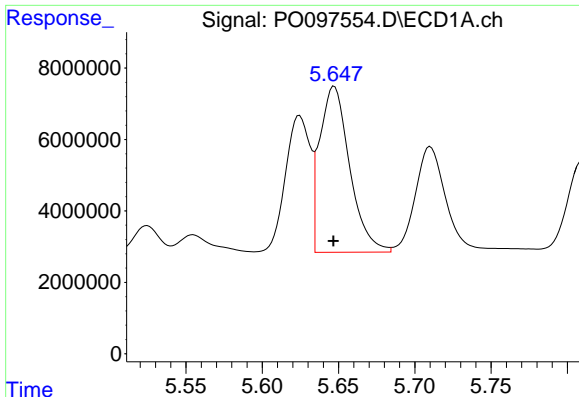
#12 AR-1232-2

R.T.: 5.354 min
 Delta R.T.: 0.001 min
 Response: 35356381
 Conc: 922.63 ng/ml



#12 AR-1232-2

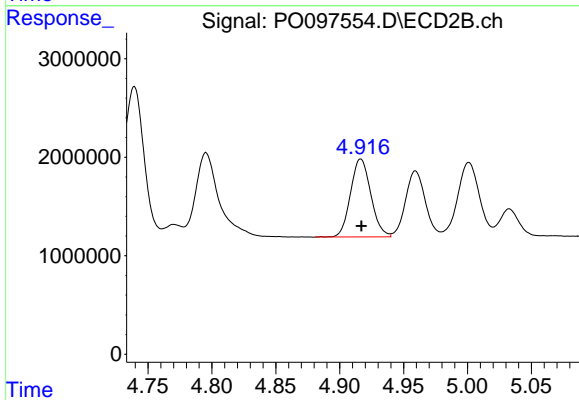
R.T.: 4.739 min
 Delta R.T.: 0.000 min
 Response: 16308822
 Conc: 1168.23 ng/ml



#13 AR-1232-3

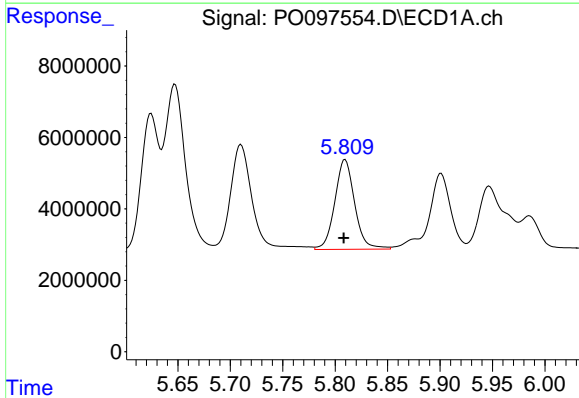
R.T.: 5.647 min
 Delta R.T.: 0.000 min
 Response: 63655007
 Conc: 984.21 ng/ml

Instrument :
 ECD_O
 ClientSampleId :



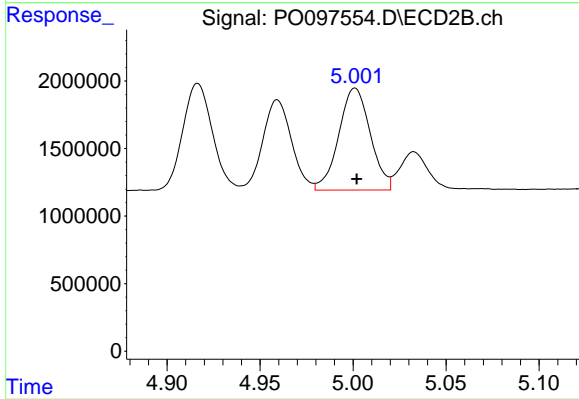
#13 AR-1232-3

R.T.: 4.916 min
 Delta R.T.: 0.000 min
 Response: 8792396
 Conc: 1251.85 ng/ml



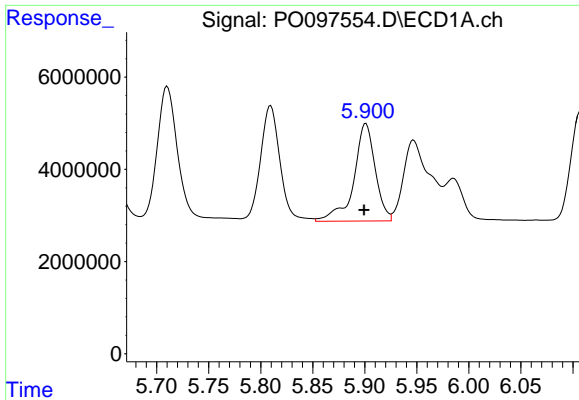
#14 AR-1232-4

R.T.: 5.810 min
 Delta R.T.: 0.002 min
 Response: 33193155
 Conc: 1042.04 ng/ml



#14 AR-1232-4

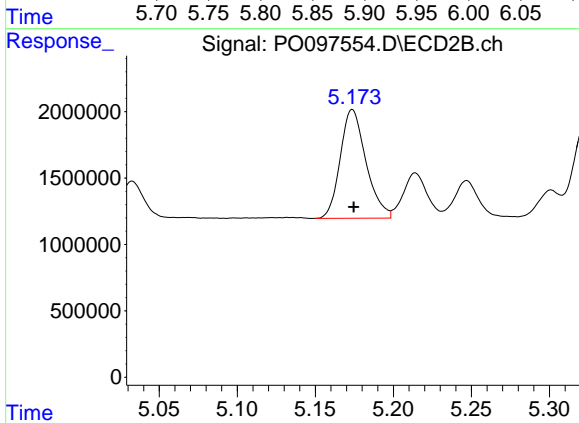
R.T.: 5.001 min
 Delta R.T.: 0.000 min
 Response: 8924258
 Conc: 1262.17 ng/ml



#15 AR-1232-5

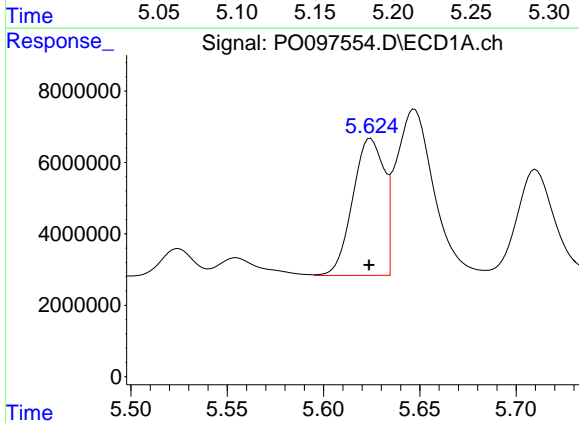
R.T.: 5.901 min
 Delta R.T.: 0.002 min
 Response: 30298945
 Conc: 1029.73 ng/ml

Instrument :
 ECD_O
 ClientSampleId :



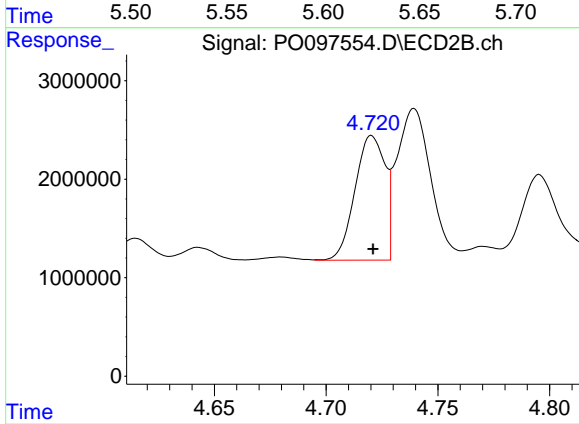
#15 AR-1232-5

R.T.: 5.174 min
 Delta R.T.: 0.000 min
 Response: 9424892
 Conc: 1197.40 ng/ml



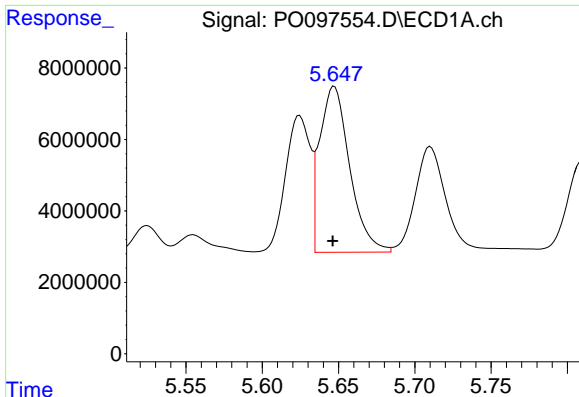
#16 AR-1242-1

R.T.: 5.624 min
 Delta R.T.: 0.000 min
 Response: 43262745
 Conc: 534.17 ng/ml



#16 AR-1242-1

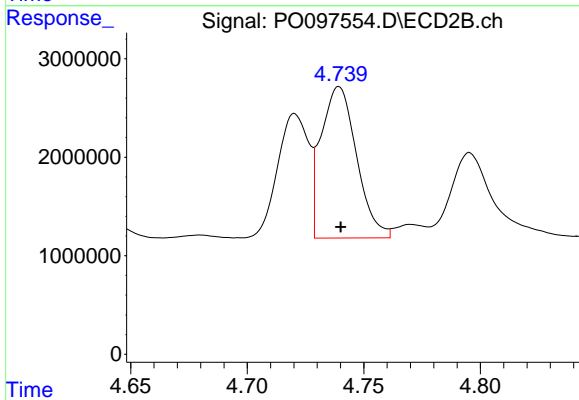
R.T.: 4.720 min
 Delta R.T.: 0.000 min
 Response: 11797250
 Conc: 611.57 ng/ml



#17 AR-1242-2

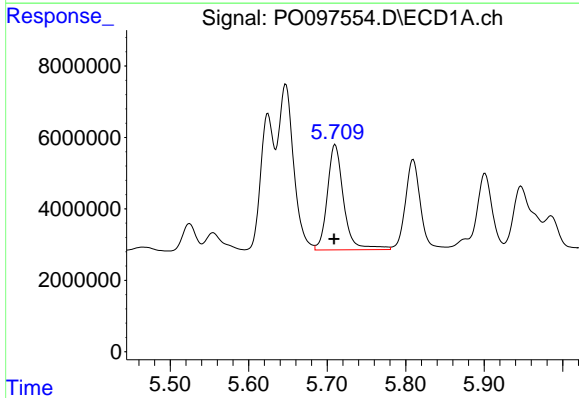
R.T.: 5.647 min
 Delta R.T.: 0.001 min
 Response: 63655007
 Conc: 509.70 ng/ml

Instrument :
 ECD_O
 ClientSampleId :



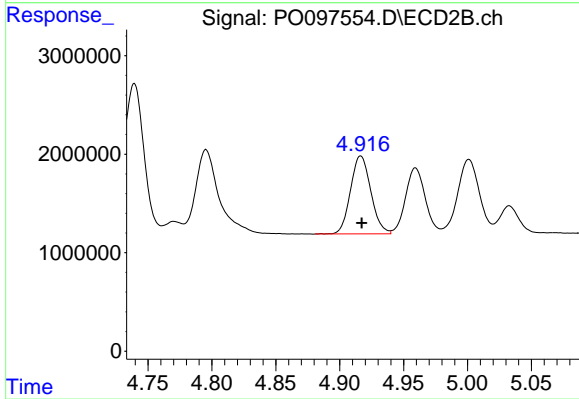
#17 AR-1242-2

R.T.: 4.739 min
 Delta R.T.: 0.000 min
 Response: 16308822
 Conc: 599.16 ng/ml



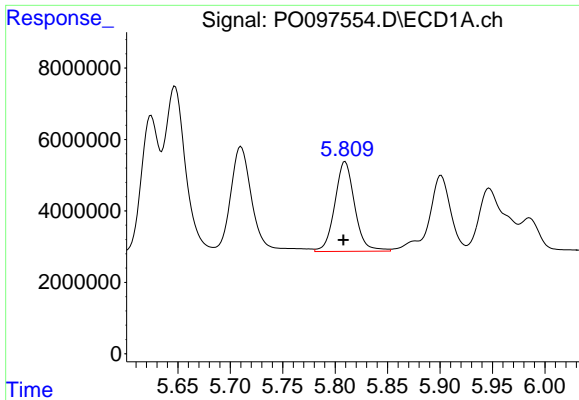
#18 AR-1242-3

R.T.: 5.710 min
 Delta R.T.: 0.001 min
 Response: 42544620
 Conc: 517.45 ng/ml



#18 AR-1242-3

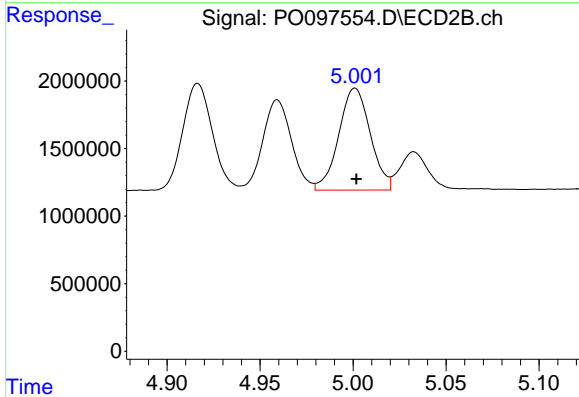
R.T.: 4.916 min
 Delta R.T.: 0.000 min
 Response: 8792396
 Conc: 612.68 ng/ml



#19 AR-1242-4

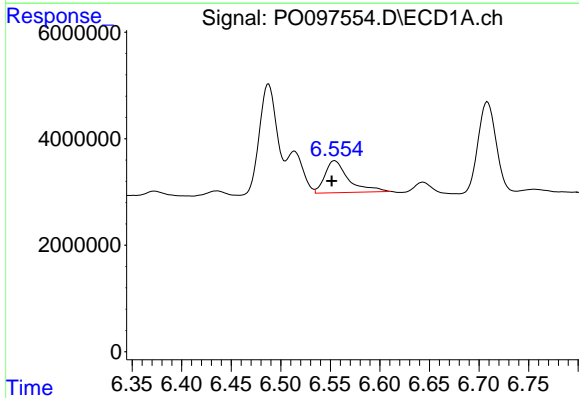
R.T.: 5.810 min
 Delta R.T.: 0.002 min
 Response: 33193155
 Conc: 528.77 ng/ml

Instrument :
 ECD_O
 ClientSampleId :



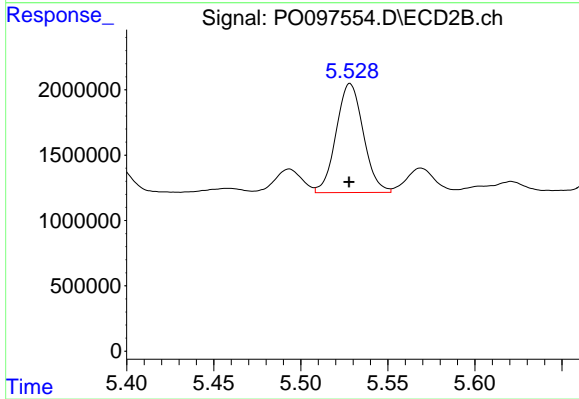
#19 AR-1242-4

R.T.: 5.001 min
 Delta R.T.: 0.000 min
 Response: 8924258
 Conc: 563.46 ng/ml



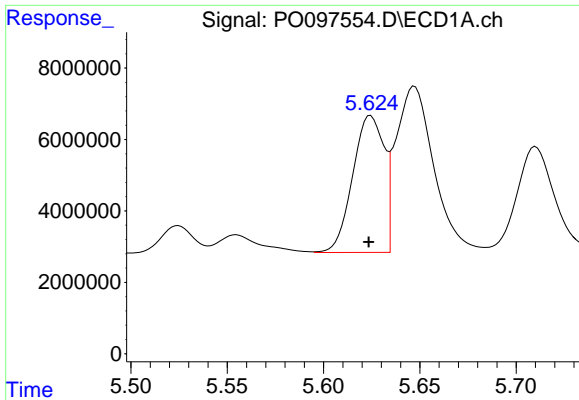
#20 AR-1242-5

R.T.: 6.554 min
 Delta R.T.: 0.003 min
 Response: 9983102
 Conc: 158.72 ng/ml



#20 AR-1242-5

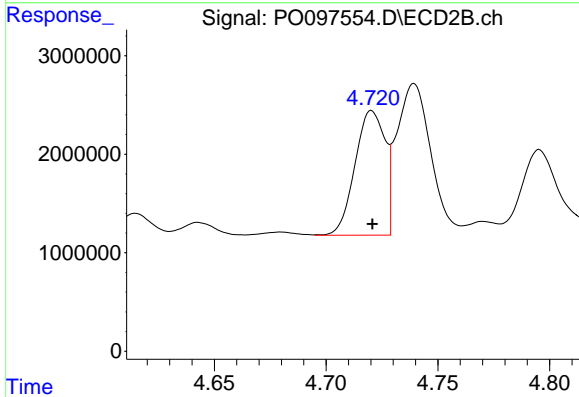
R.T.: 5.528 min
 Delta R.T.: 0.000 min
 Response: 9064260
 Conc: 513.61 ng/ml



#21 AR-1248-1

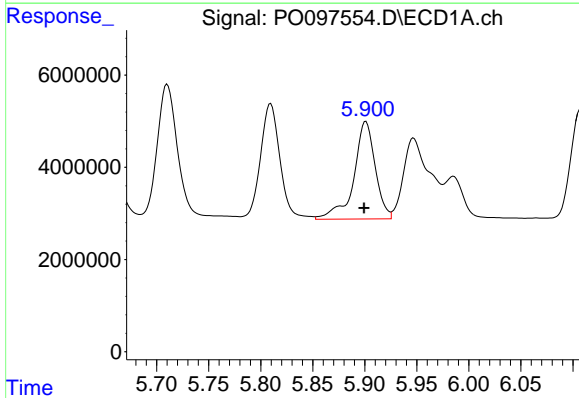
R.T.: 5.624 min
 Delta R.T.: 0.001 min
 Response: 43262745
 Conc: 733.54 ng/ml

Instrument :
 ECD_O
 ClientSampleId :



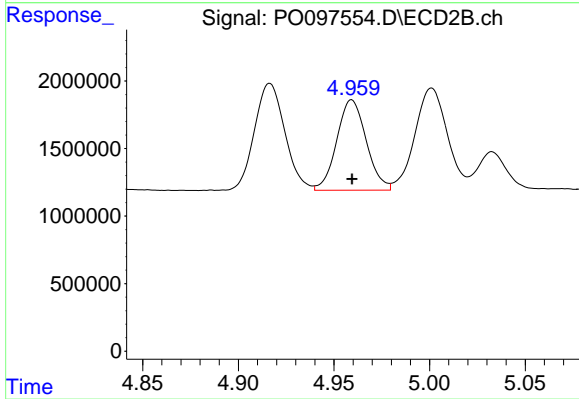
#21 AR-1248-1

R.T.: 4.720 min
 Delta R.T.: 0.000 min
 Response: 11797250
 Conc: 858.50 ng/ml



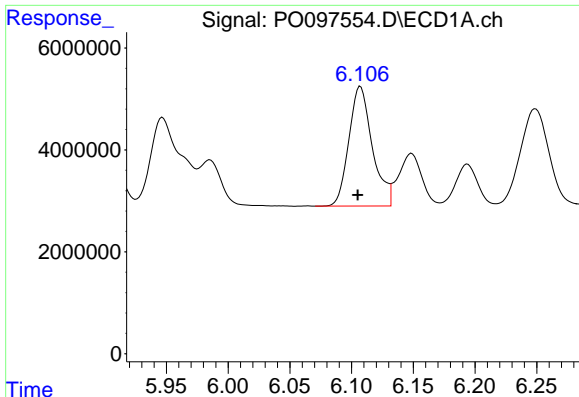
#22 AR-1248-2

R.T.: 5.901 min
 Delta R.T.: 0.002 min
 Response: 30298945
 Conc: 306.35 ng/ml



#22 AR-1248-2

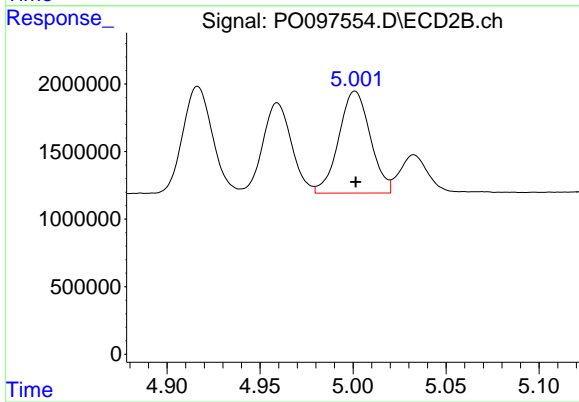
R.T.: 4.959 min
 Delta R.T.: 0.000 min
 Response: 7205895
 Conc: 324.97 ng/ml



#23 AR-1248-3

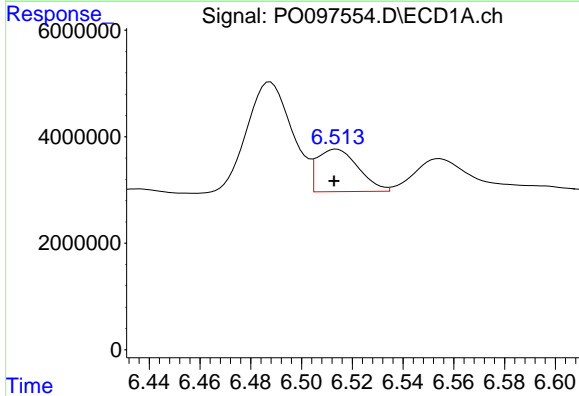
R.T.: 6.107 min
 Delta R.T.: 0.002 min
 Response: 30998395
 Conc: 299.19 ng/ml

Instrument :
 ECD_O
 ClientSampleId :



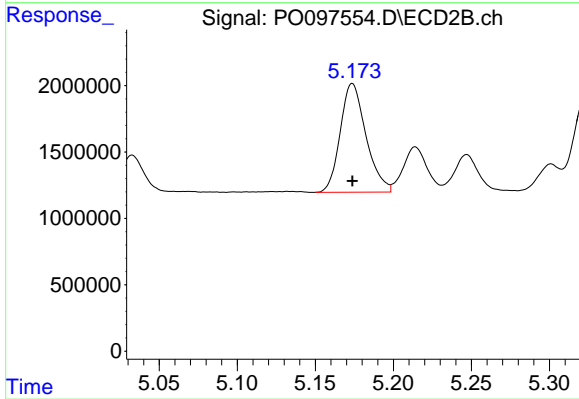
#23 AR-1248-3

R.T.: 5.001 min
 Delta R.T.: 0.000 min
 Response: 8924258
 Conc: 388.14 ng/ml



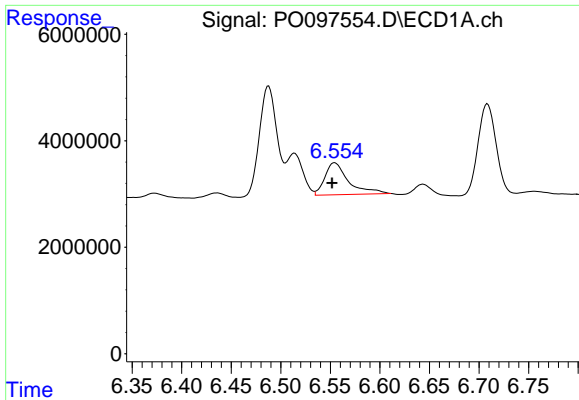
#24 AR-1248-4

R.T.: 6.514 min
 Delta R.T.: 0.001 min
 Response: 8965510
 Conc: 98.01 ng/ml



#24 AR-1248-4

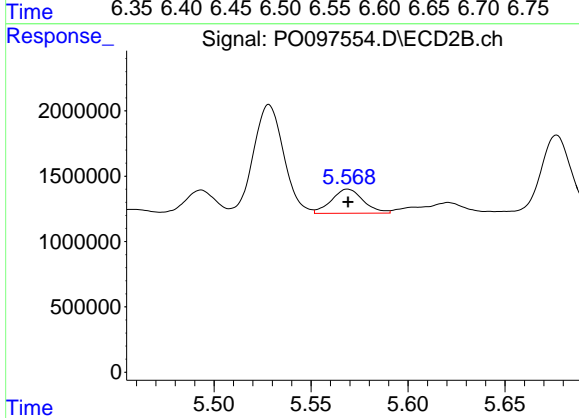
R.T.: 5.174 min
 Delta R.T.: 0.000 min
 Response: 9424892
 Conc: 347.31 ng/ml



#25 AR-1248-5

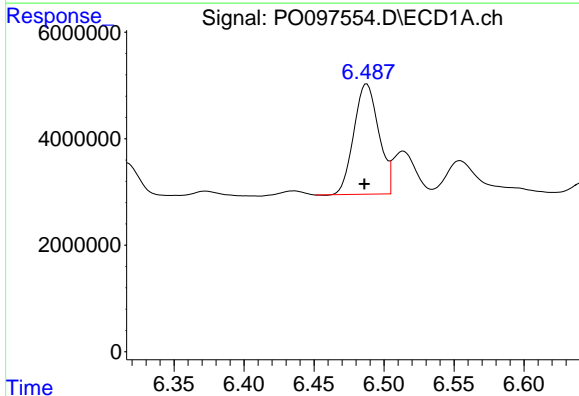
R.T.: 6.554 min
 Delta R.T.: 0.002 min
 Response: 9983102
 Conc: 98.34 ng/ml

Instrument :
 ECD_O
 ClientSampleId :



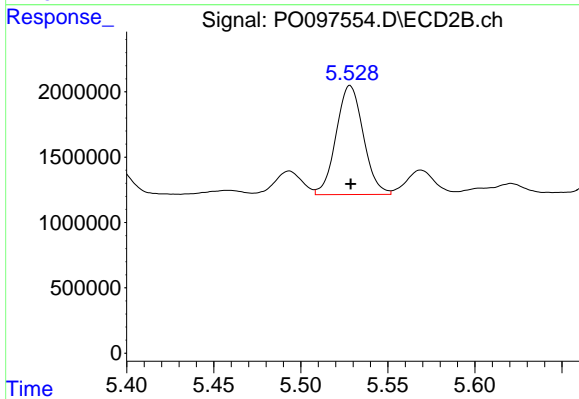
#25 AR-1248-5

R.T.: 5.569 min
 Delta R.T.: 0.000 min
 Response: 2113639
 Conc: 93.49 ng/ml



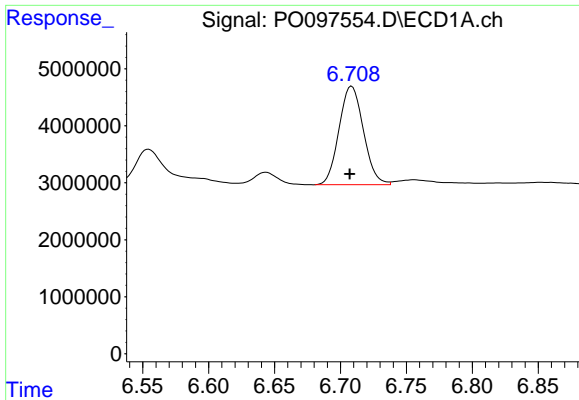
#26 AR-1254-1

R.T.: 6.488 min
 Delta R.T.: 0.002 min
 Response: 25599386
 Conc: 232.85 ng/ml



#26 AR-1254-1

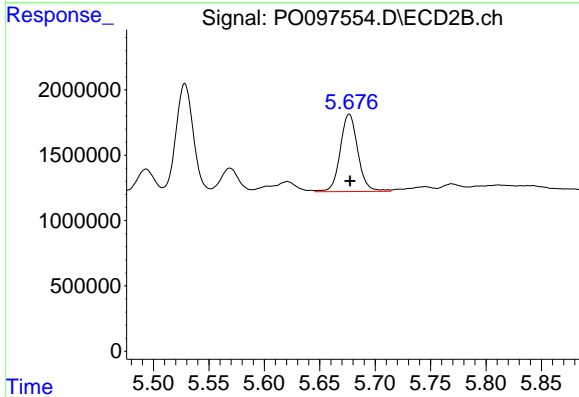
R.T.: 5.528 min
 Delta R.T.: 0.000 min
 Response: 9064260
 Conc: 234.85 ng/ml



#27 AR-1254-2

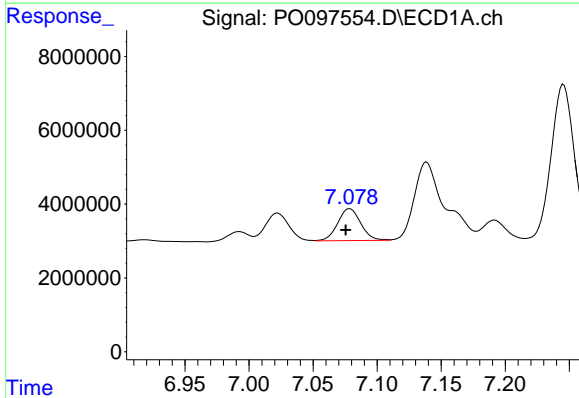
R.T.: 6.708 min
 Delta R.T.: 0.001 min
 Response: 22270810
 Conc: 136.66 ng/ml

Instrument :
 ECD_O
 ClientSampleId :



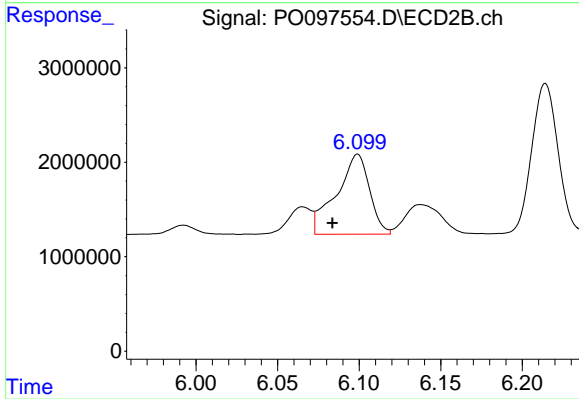
#27 AR-1254-2

R.T.: 5.677 min
 Delta R.T.: 0.000 min
 Response: 6566694
 Conc: 192.79 ng/ml



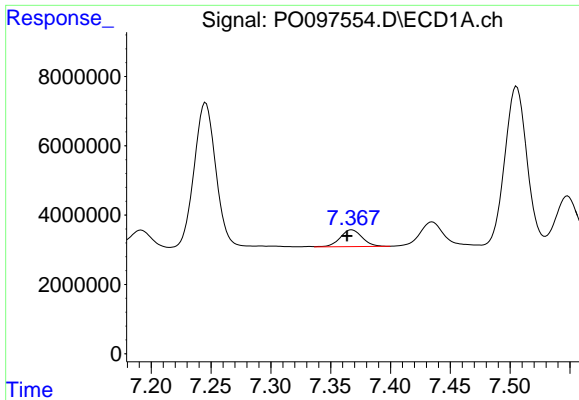
#28 AR-1254-3

R.T.: 7.079 min
 Delta R.T.: 0.003 min
 Response: 10853611
 Conc: 66.65 ng/ml



#28 AR-1254-3

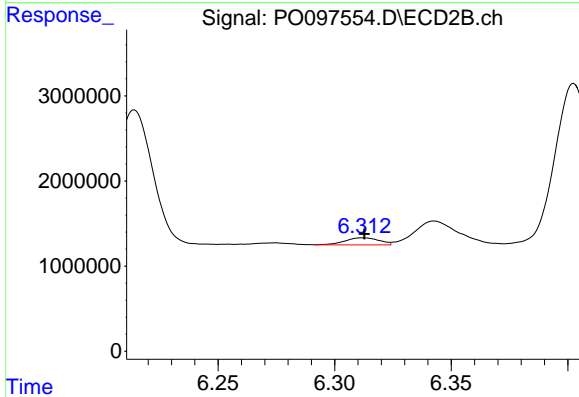
R.T.: 6.099 min
 Delta R.T.: 0.016 min
 Response: 11984172
 Conc: 225.86 ng/ml



#29 AR-1254-4

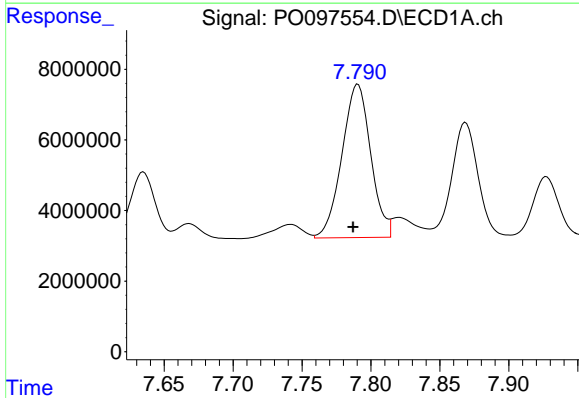
R.T.: 7.368 min
 Delta R.T.: 0.004 min
 Response: 6153993
 Conc: 63.14 ng/ml

Instrument :
 ECD_O
 ClientSampleId :



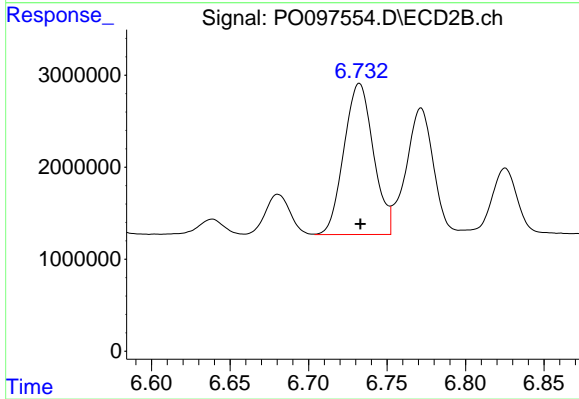
#29 AR-1254-4

R.T.: 6.312 min
 Delta R.T.: 0.000 min
 Response: 852790
 Conc: 31.27 ng/ml



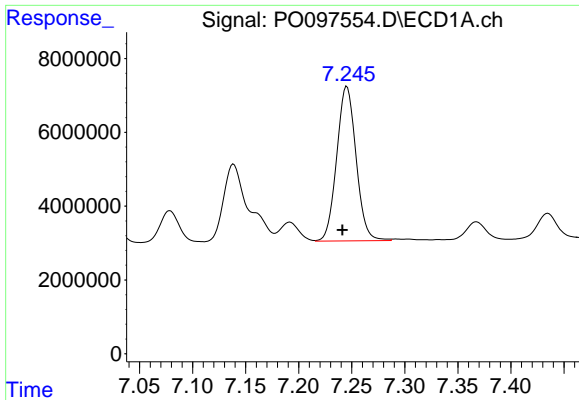
#30 AR-1254-5

R.T.: 7.791 min
 Delta R.T.: 0.003 min
 Response: 63084850
 Conc: 558.65 ng/ml



#30 AR-1254-5

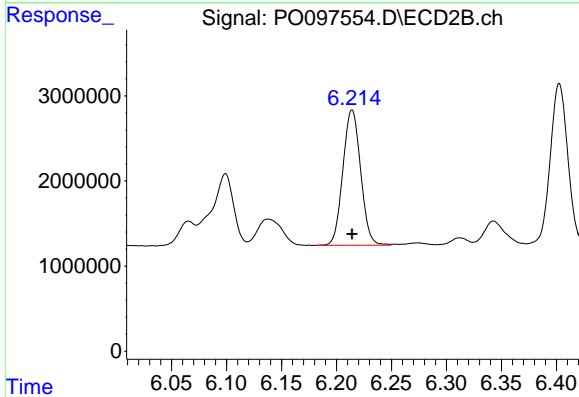
R.T.: 6.732 min
 Delta R.T.: 0.000 min
 Response: 21451521
 Conc: 486.55 ng/ml



#31 AR-1260-1

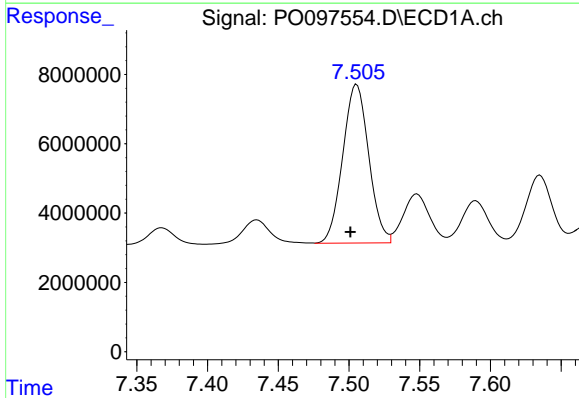
R.T.: 7.245 min
 Delta R.T.: 0.004 min
 Response: 53165528
 Conc: 416.51 ng/ml

Instrument :
 ECD_O
 ClientSampleId :



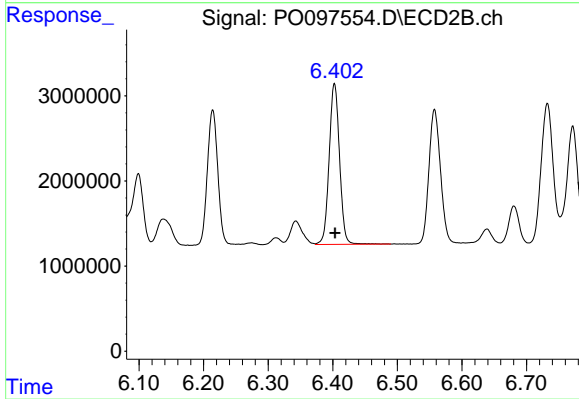
#31 AR-1260-1

R.T.: 6.214 min
 Delta R.T.: 0.000 min
 Response: 17885251
 Conc: 478.86 ng/ml



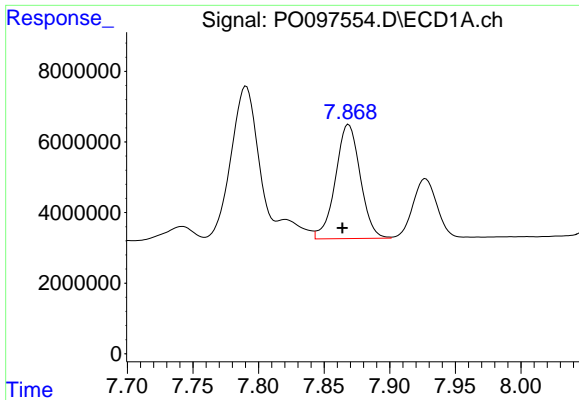
#32 AR-1260-2

R.T.: 7.505 min
 Delta R.T.: 0.004 min
 Response: 58576915
 Conc: 429.87 ng/ml



#32 AR-1260-2

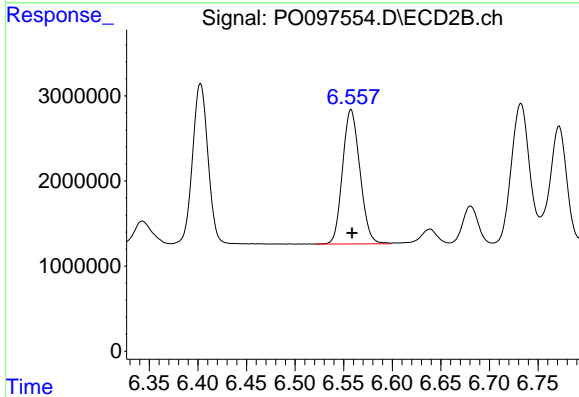
R.T.: 6.403 min
 Delta R.T.: 0.000 min
 Response: 21175595
 Conc: 500.44 ng/ml



#33 AR-1260-3

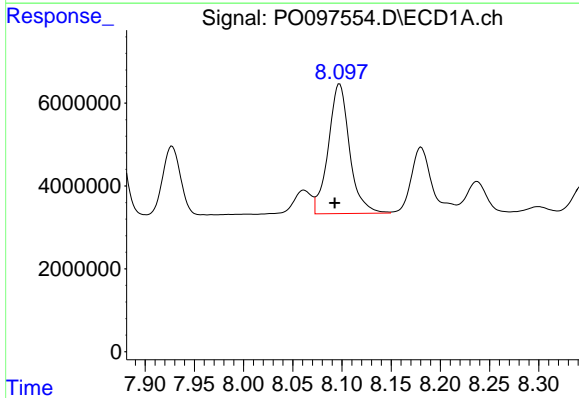
R.T.: 7.869 min
 Delta R.T.: 0.005 min
 Response: 42561923
 Conc: 402.67 ng/ml

Instrument :
 ECD_O
 ClientSampleId :



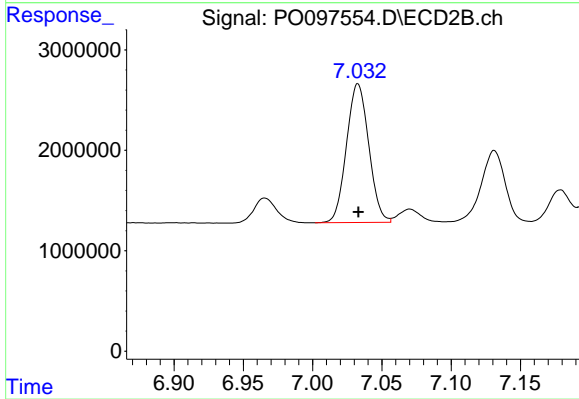
#33 AR-1260-3

R.T.: 6.558 min
 Delta R.T.: 0.000 min
 Response: 19633514
 Conc: 469.05 ng/ml



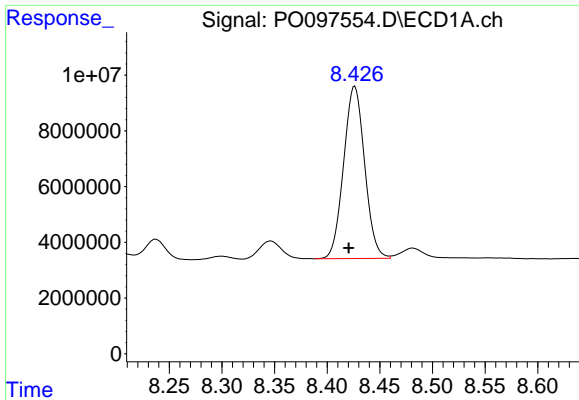
#34 AR-1260-4

R.T.: 8.098 min
 Delta R.T.: 0.005 min
 Response: 47070387
 Conc: 416.09 ng/ml



#34 AR-1260-4

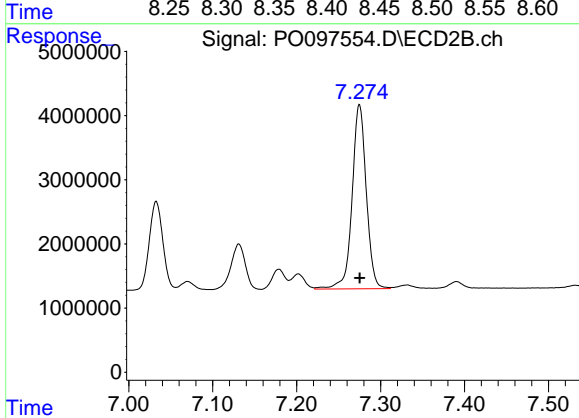
R.T.: 7.033 min
 Delta R.T.: 0.000 min
 Response: 15476447
 Conc: 478.51 ng/ml



#35 AR-1260-5

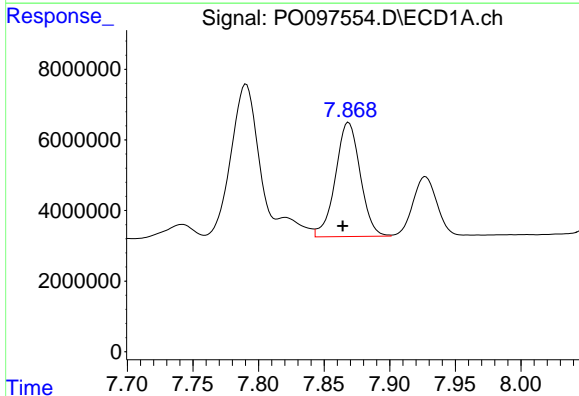
R.T.: 8.426 min
 Delta R.T.: 0.006 min
 Response: 86281131
 Conc: 458.99 ng/ml

Instrument :
 ECD_O
 ClientSampleId :



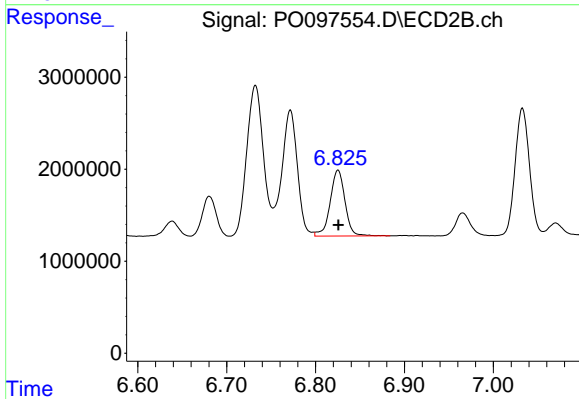
#35 AR-1260-5

R.T.: 7.275 min
 Delta R.T.: 0.000 min
 Response: 33656703
 Conc: 509.73 ng/ml



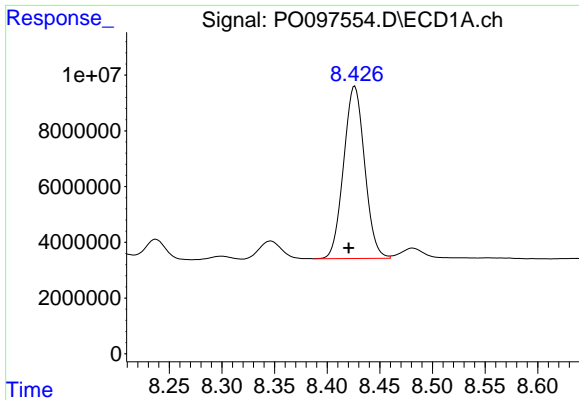
#36 AR-1262-1

R.T.: 7.869 min
 Delta R.T.: 0.004 min
 Response: 42561923
 Conc: 282.84 ng/ml



#36 AR-1262-1

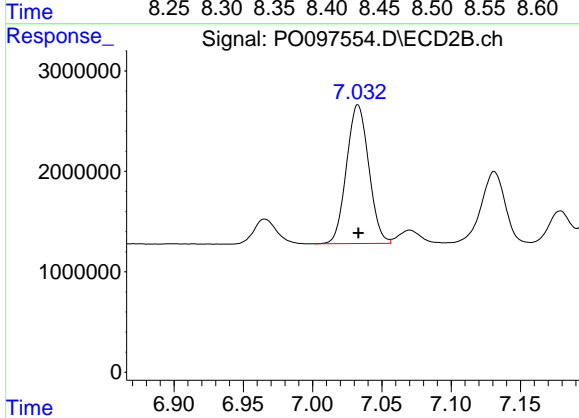
R.T.: 6.825 min
 Delta R.T.: 0.000 min
 Response: 8326126
 Conc: 414.88 ng/ml



#37 AR-1262-2

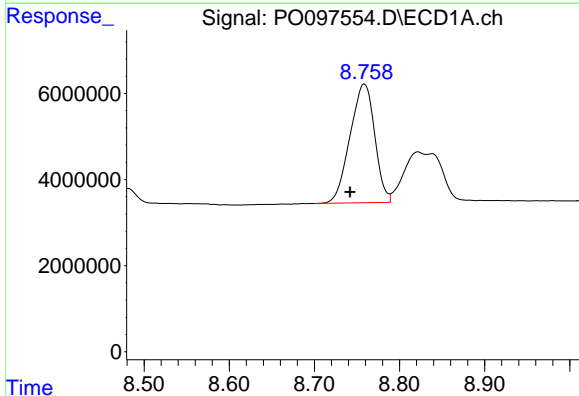
R.T.: 8.426 min
 Delta R.T.: 0.006 min
 Response: 86281131
 Conc: 394.00 ng/ml

Instrument :
 ECD_O
 ClientSampleId :



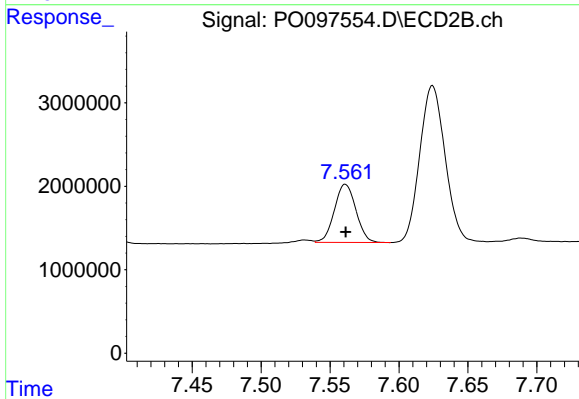
#37 AR-1262-2

R.T.: 7.033 min
 Delta R.T.: 0.000 min
 Response: 15476447
 Conc: 354.22 ng/ml



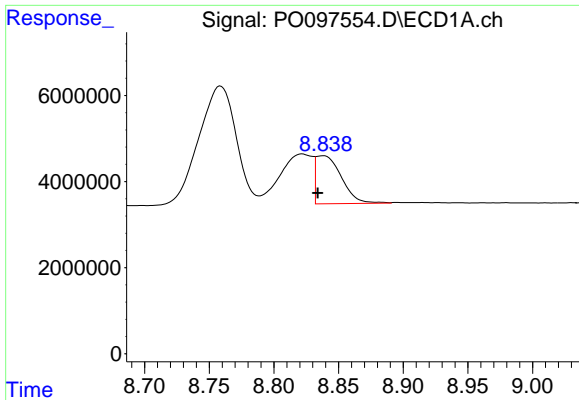
#38 AR-1262-3

R.T.: 8.759 min
 Delta R.T.: 0.017 min
 Response: 55595699
 Conc: 358.60 ng/ml



#38 AR-1262-3

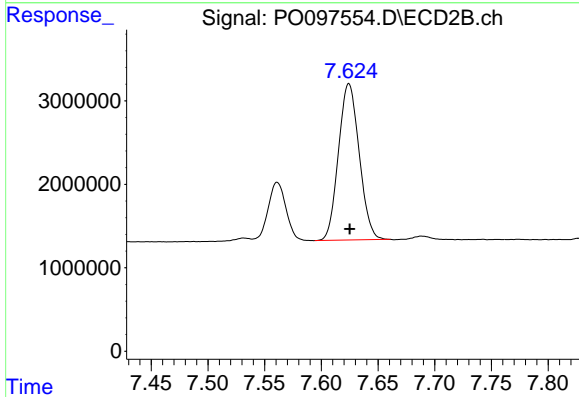
R.T.: 7.561 min
 Delta R.T.: 0.000 min
 Response: 7596057
 Conc: 243.74 ng/ml



#39 AR-1262-4

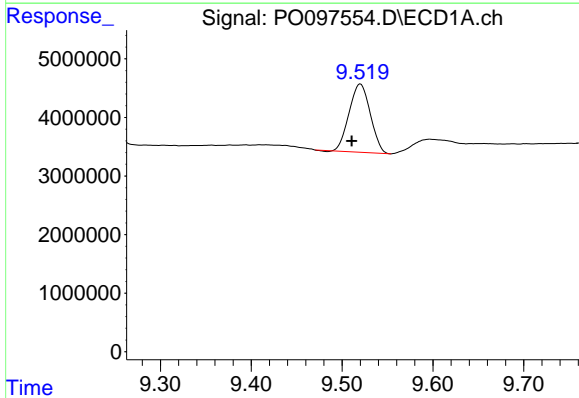
R.T.: 8.838 min
 Delta R.T.: 0.004 min
 Response: 15273317
 Conc: 122.52 ng/ml

Instrument :
 ECD_O
 ClientSampleId :



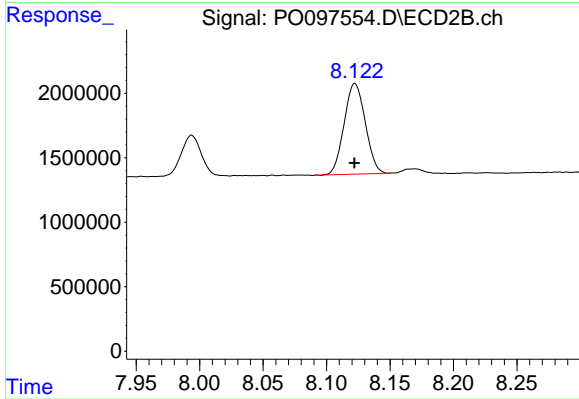
#39 AR-1262-4

R.T.: 7.624 min
 Delta R.T.: 0.000 min
 Response: 23868312
 Conc: 424.33 ng/ml



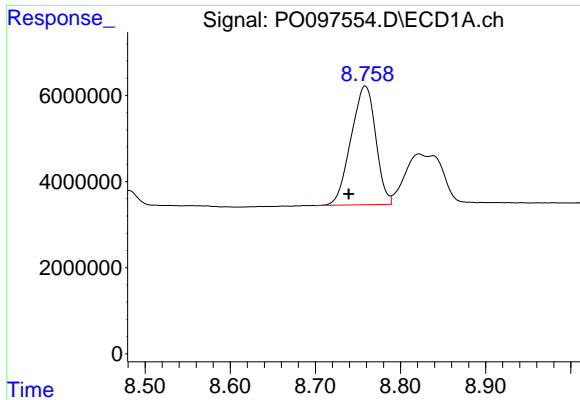
#40 AR-1262-5

R.T.: 9.520 min
 Delta R.T.: 0.010 min
 Response: 18838004
 Conc: 273.93 ng/ml



#40 AR-1262-5

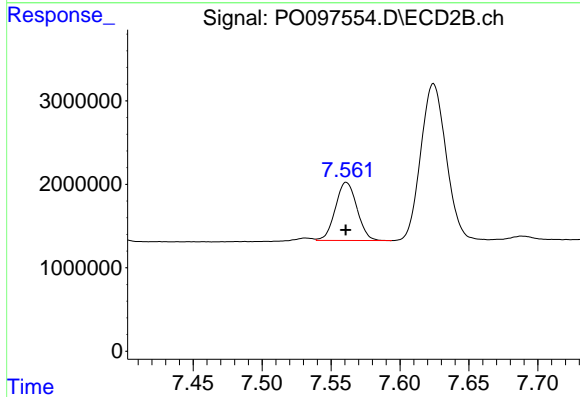
R.T.: 8.122 min
 Delta R.T.: 0.000 min
 Response: 8161390
 Conc: 346.92 ng/ml



#41 AR-1268-1

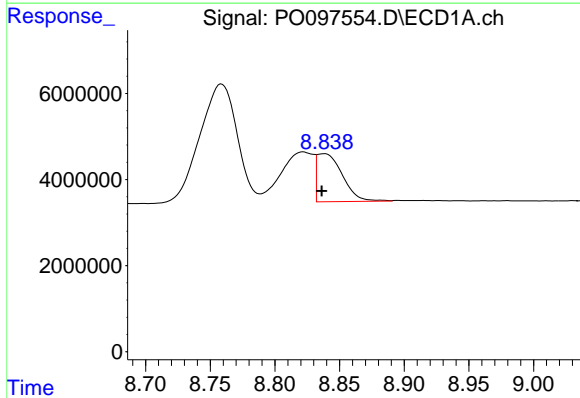
R.T.: 8.759 min
 Delta R.T.: 0.019 min
 Response: 55595699
 Conc: 195.75 ng/ml

Instrument :
 ECD_O
 ClientSampleId :



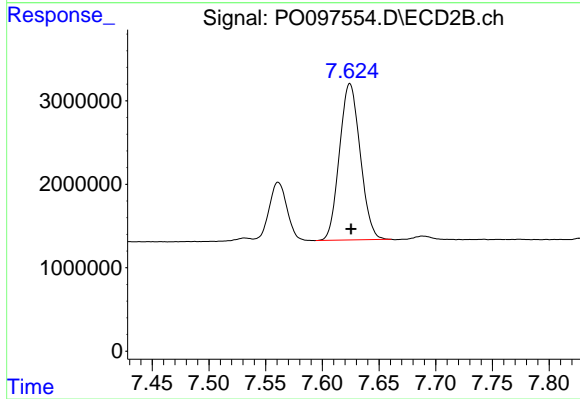
#41 AR-1268-1

R.T.: 7.561 min
 Delta R.T.: 0.000 min
 Response: 7596057
 Conc: 79.36 ng/ml



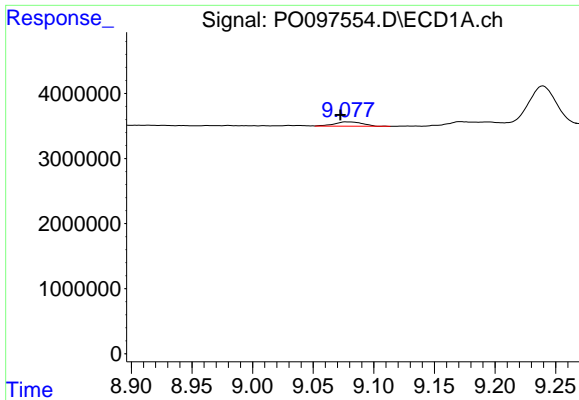
#42 AR-1268-2

R.T.: 8.838 min
 Delta R.T.: 0.002 min
 Response: 15273317
 Conc: 60.11 ng/ml



#42 AR-1268-2

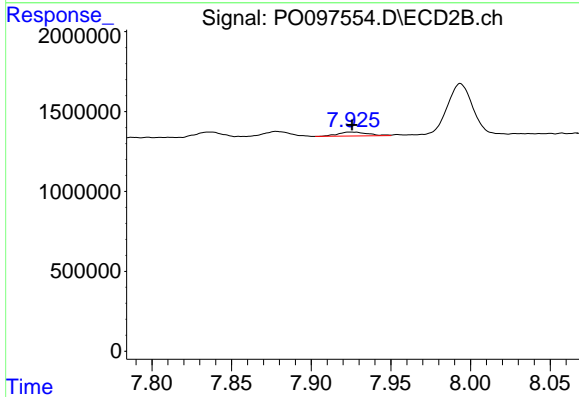
R.T.: 7.624 min
 Delta R.T.: 0.000 min
 Response: 23868312
 Conc: 287.93 ng/ml



#43 AR-1268-3

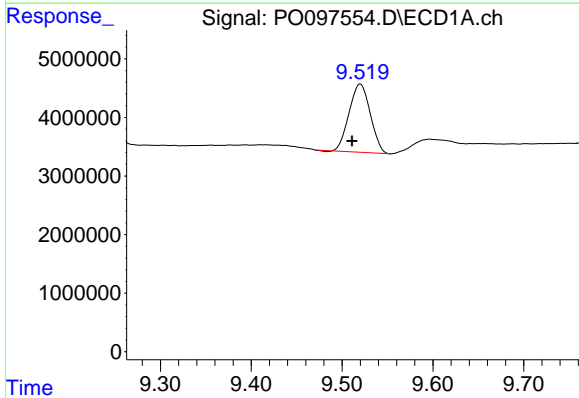
R.T.: 9.078 min
 Delta R.T.: 0.005 min
 Response: 1106855
 Conc: 4.91 ng/ml

Instrument :
 ECD_O
 ClientSampleId :



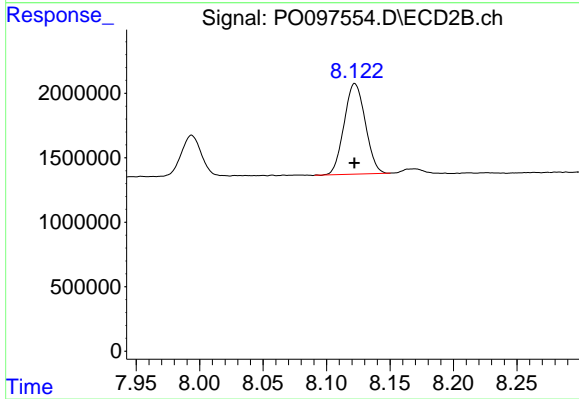
#43 AR-1268-3

R.T.: 7.925 min
 Delta R.T.: 0.000 min
 Response: 316542
 Conc: 15.98 ng/ml



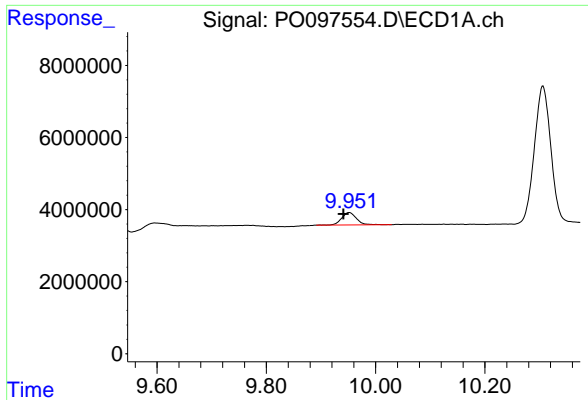
#44 AR-1268-4

R.T.: 9.520 min
 Delta R.T.: 0.009 min
 Response: 18838004
 Conc: 244.75 ng/ml



#44 AR-1268-4

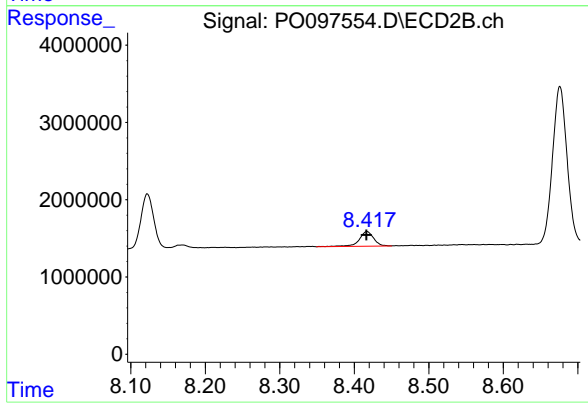
R.T.: 8.122 min
 Delta R.T.: 0.000 min
 Response: 8161390
 Conc: 315.81 ng/ml



#45 AR-1268-5

R.T.: 9.952 min
Delta R.T.: 0.010 min
Response: 6557201
Conc: 9.50 ng/ml

Instrument :
ECD_O
ClientSampleId :



#45 AR-1268-5

R.T.: 8.417 min
Delta R.T.: 0.000 min
Response: 2614516
Conc: 11.47 ng/ml