

Data Path : Z:\pestpcbsrv\HPCHEM1\ECD_O\Data\PO083118\
 Data File : PO048688.D
 Signal(s) : Signal #1: ECD1A.CH Signal #2: ECD2B.CH
 Acq On : 31 Aug 2018 9:59
 Operator : SM/SJ
 Sample : J4701-01
 Misc :
 ALS Vial : 8 Sample Multiplier: 1

Instrument :
 ECD_O
 ClientSampleId :
 OILY-DEBRIS-DRUM-2

Integration File signal 1: autoint1.e
 Integration File signal 2: autoint2.e
 Quant Time: Aug 31 10:59:33 2018
 Quant Method : Z:\pestpcbsrv\HPCHEM1\ECD_O\methods\PO082418.M
 Quant Title : GC EXTRACTABLES
 QLast Update : Fri Aug 24 08:17:51 2018
 Response via : Initial Calibration
 Integrator: ChemStation 6890 Scale Mode: Small noise peaks clipped

Volume Inj. : 2 µl
 Signal #1 Phase : ZB-MR1 Signal #2 Phase: ZB-MR2
 Signal #1 Info : 30Mx0.32mmx 0.50µ Signal #2 Info : 30M x 0.32mm x 0.25µm

Compound	RT#1	RT#2	Resp#1	Resp#2	ng/ml	ng/ml

System Monitoring Compounds						
1) SA Tetrachlo...	4.383	3.628	1784950	1736962	9.423	6.416 #
2) SA Decachlor...	10.057	8.593	2217806	2148557	12.879	12.829
Target Compounds						
3) L1 AR-1016-1	5.108	4.277	226741	40505	47.544	6.760 #
4) L1 AR-1016-2	5.264	4.720	244510	129707	52.144	14.766 #
5) L1 AR-1016-3	0.000	4.720	0	129707	N.D.	10.133 #
6) L1 AR-1016-4	5.630	4.780	163062	286209	26.822	34.898 #
7) L1 AR-1016-5	6.080	5.152	166729	-55055	33.386	N.D. #
8) L2 AR-1221-1	4.595	0.000	92880	0	44.178	N.D. #
9) L2 AR-1221-2	4.687	3.922	99464	110232	65.603	57.298
10) L2 AR-1221-3	4.753	0.000	59665	0	12.027	N.D. #
11) L3 AR-1232-1	5.630	4.507	163062	912310	36.290	312.597 #
12) L3 AR-1232-2	5.756	4.720	-12972	129707	N.D.	21.661 #
13) L3 AR-1232-3	5.820	4.949	101496	702455	60.361	267.274 #
14) L3 AR-1232-4	6.401	5.300	407323	190920	251.477	68.819 #
15) L3 AR-1232-5	0.000	5.590	0	191736	N.D.	62.289 #
16) L4 AR-1242-1	5.108	4.277	226741	40505	94.649	11.583 #
17) L4 AR-1242-2	5.848	4.949	167145	702455	46.115	128.421 #
18) L4 AR-1242-3	6.080	4.949	166729	702455	96.623	167.389 #
19) L4 AR-1242-4	6.149	0.000	44711	0	34.656	N.D. #
20) L4 AR-1242-5	6.149	0.000	44711	0	10.006	N.D. #
21) L5 AR-1248-1	5.820	4.949	101496	702455	17.193	92.695 #
22) L5 AR-1248-2	6.401	5.501	407323	826434	70.081	62.773
23) L5 AR-1248-3	6.401	5.590	407323	191736	52.781	21.016 #
25) L5 AR-1248-5	6.664	6.062	130082	1073986	26.887	179.174 #
26) L6 AR-1254-1	6.617	5.647	655484	542108	48.287	37.679
27) L6 AR-1254-2	6.898	5.960	106790	268579	12.939	23.190 #
28) L6 AR-1254-3	6.983	6.275	260719	138405	18.171	9.449 #
29) L6 AR-1254-4	7.267	6.593	184809	176119	16.816	17.896
30) L6 AR-1254-5	7.561	6.688	145722	1995868	17.881	102.420 #
31) L7 AR-1260-1	7.144	6.176	1527601	1451623	153.354	104.821 #
32) L7 AR-1260-2	7.400	6.362	1895529	1987746	158.237	113.304 #
33) L7 AR-1260-3	7.683	6.516	2072638	1601427	151.018	104.442 #
34) L7 AR-1260-4	7.983	6.984	1653213	1466874	166.980	126.022
35) L7 AR-1260-5	8.297	7.224	3617999	3964933	189.522	146.425
36) L8 AR-1262-1	7.039	6.062	975676	1073986	124.927	101.037
37) L8 AR-1262-2	7.815	6.779	726839	904348	112.882	94.605
38) L8 AR-1262-3	8.062	7.081	1108033	853559	160.477	90.404 #
39) L8 AR-1262-4	8.688	7.505	579719	830585	42.442	61.722 #

Data Path : Z:\pestpcbsrv\HPCHEM1\ECD_O\Data\PO083118\
 Data File : PO048688.D
 Signal(s) : Signal #1: ECD1A.CH Signal #2: ECD2B.CH
 Acq On : 31 Aug 2018 9:59
 Operator : SM/SJ
 Sample : J4701-01
 Misc :
 ALS Vial : 8 Sample Multiplier: 1

Instrument :
 ECD_O
 ClientSampleId :
 OILY-DEBRIS-DRUM-2

Integration File signal 1: autoint1.e
 Integration File signal 2: autoint2.e
 Quant Time: Aug 31 10:59:33 2018
 Quant Method : Z:\pestpcbsrv\HPCHEM1\ECD_O\methods\PO082418.M
 Quant Title : GC EXTRACTABLES
 QLast Update : Fri Aug 24 08:17:51 2018
 Response via : Initial Calibration
 Integrator: ChemStation 6890 Scale Mode: Small noise peaks clipped

Volume Inj. : 2 µl
 Signal #1 Phase : ZB-MR1 Signal #2 Phase: ZB-MR2
 Signal #1 Info : 30Mx0.32mmx 0.50µ Signal #2 Info : 30M x 0.32mm x 0.25µm

	Compound	RT#1	RT#2	Resp#1	Resp#2	ng/ml	ng/ml
40)	L8 AR-1262-5	9.329	8.061	1244763	1163854	134.623	113.000
41)	L9 AR-1268-1	7.757	6.725	1523691	1779499	287.160	230.053
42)	L9 AR-1268-2	7.983	7.569	1653213	2837682	242.102	94.012 #
43)	L9 AR-1268-3	8.617	0.000	2237888	0	86.744	N.D. #
44)	L9 AR-1268-4	0.000	7.934	0	500562	N.D.	76.513 #
45)	L9 AR-1268-5	9.729	8.346	226000	232871	3.724	3.740

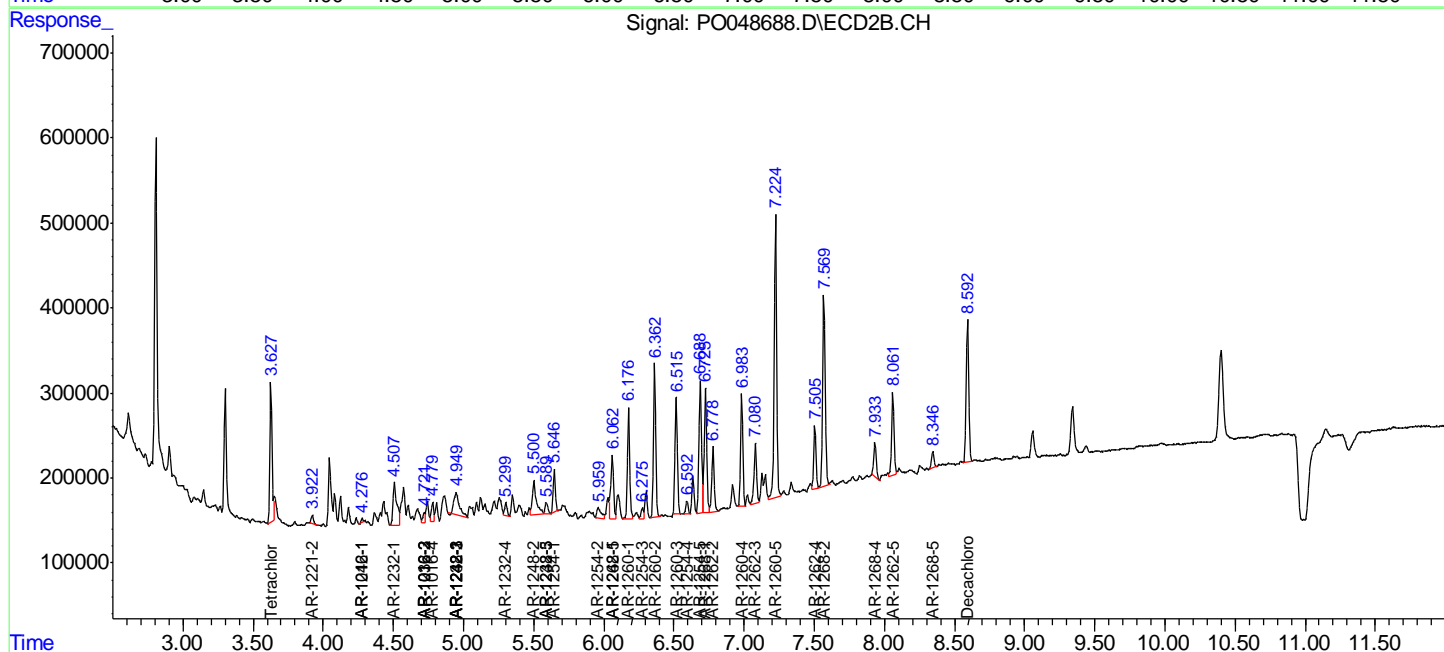
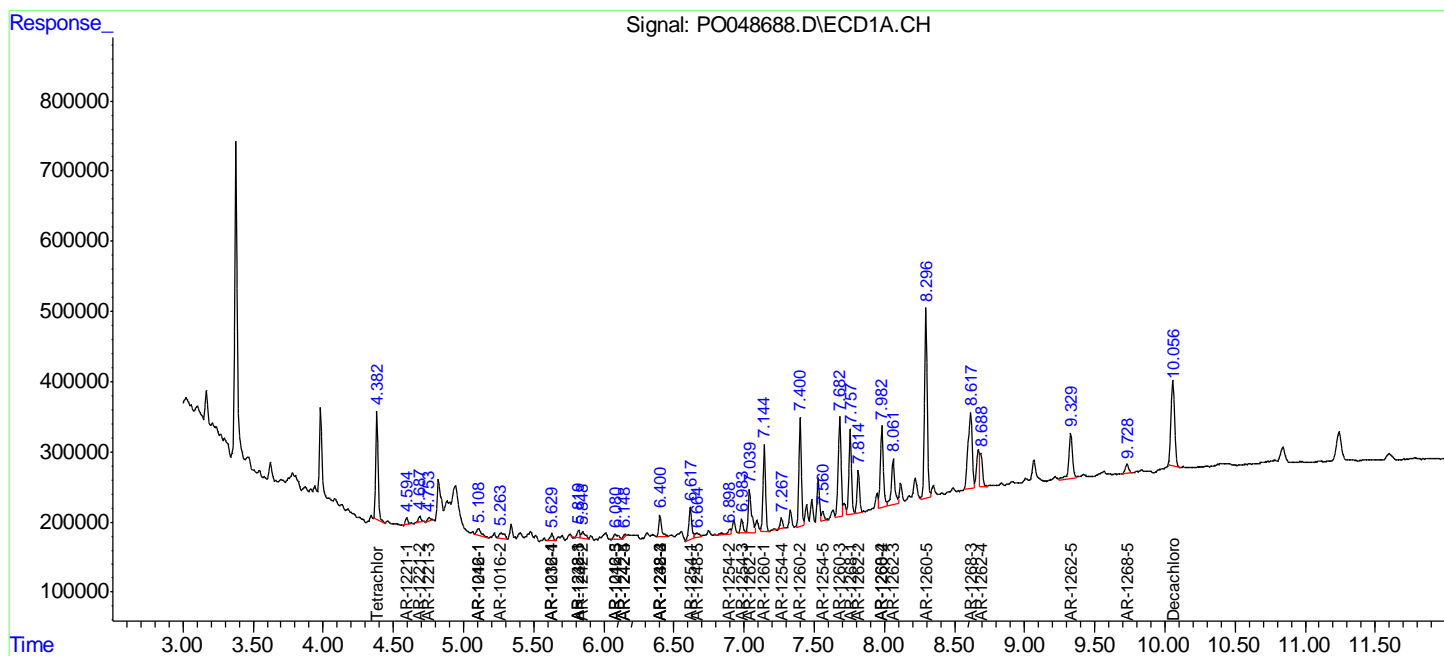
(f)=RT Delta > 1/2 Window (#)=Amounts differ by > 25% (m)=manual int.

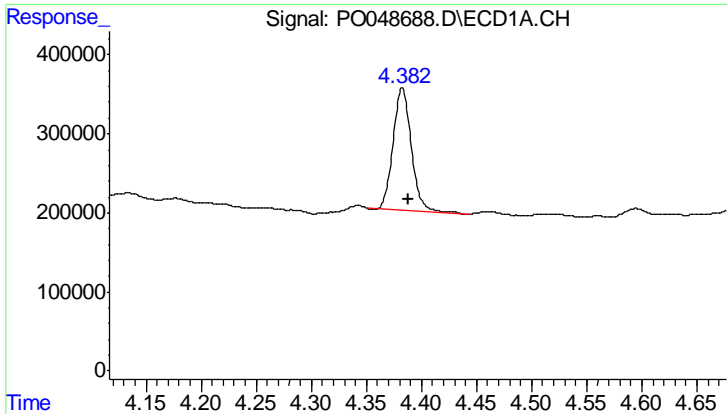
Data Path : Z:\pestpcbsrv\HPCHEM1\ECD_O\Data\PO083118\
 Data File : PO048688.D
 Signal(s) : Signal #1: ECD1A.CH Signal #2: ECD2B.CH
 Acq On : 31 Aug 2018 9:59
 Operator : SM/SJ
 Sample : J4701-01
 Misc :
 ALS Vial : 8 Sample Multiplier: 1

Instrument :
 ECD_O
 ClientSampled :
 OILY-DEBRIS-DRUM-2

Integration File signal 1: autoint1.e
 Integration File signal 2: autoint2.e
 Quant Time: Aug 31 10:59:33 2018
 Quant Method : Z:\pestpcbsrv\HPCHEM1\ECD_O\methods\PO082418.M
 Quant Title : GC EXTRACTABLES
 QLast Update : Fri Aug 24 08:17:51 2018
 Response via : Initial Calibration
 Integrator: ChemStation 6890 Scale Mode: Small noise peaks clipped

Volume Inj. : 2 µl
 Signal #1 Phase : ZB-MR1 Signal #2 Phase: ZB-MR2
 Signal #1 Info : 30Mx0.32mmx 0.50µ Signal #2 Info : 30M x 0.32mm x 0.25µm

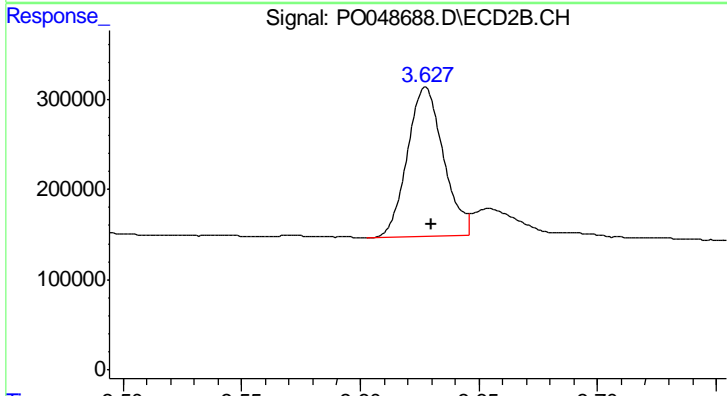




#1 Tetrachloro-m-xylene

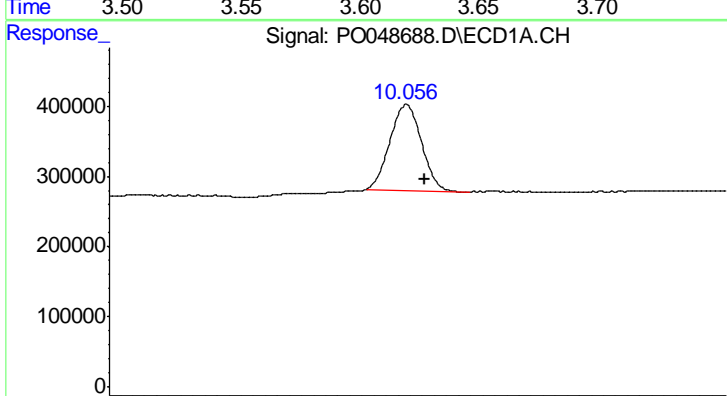
R.T.: 4.383 min
 Delta R.T.: -0.005 min
 Response: 1784950
 Conc: 9.42 ng/ml

Instrument :
 ECD_O
 ClientSampleId :
 OILY-DEBRIS-DRUM-2



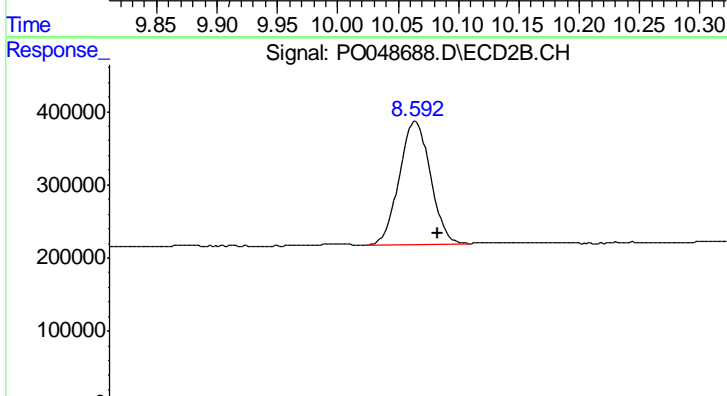
#1 Tetrachloro-m-xylene

R.T.: 3.628 min
 Delta R.T.: -0.003 min
 Response: 1736962
 Conc: 6.42 ng/ml



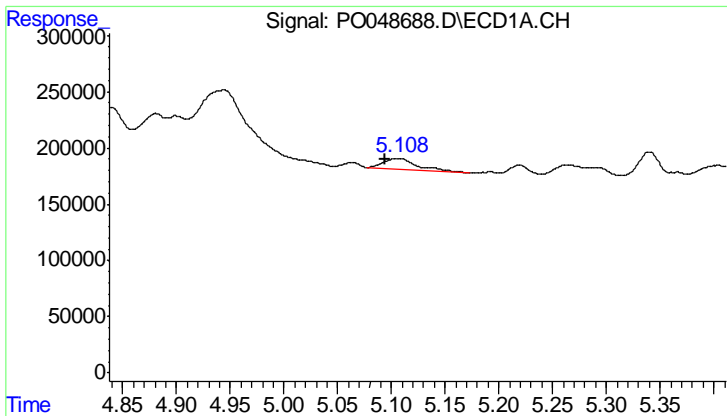
#2 Decachlorobiphenyl

R.T.: 10.057 min
 Delta R.T.: -0.015 min
 Response: 2217806
 Conc: 12.88 ng/ml



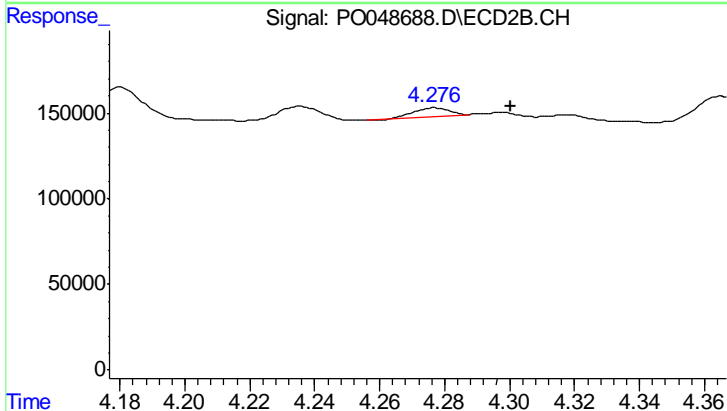
#2 Decachlorobiphenyl

R.T.: 8.593 min
 Delta R.T.: -0.014 min
 Response: 2148557
 Conc: 12.83 ng/ml

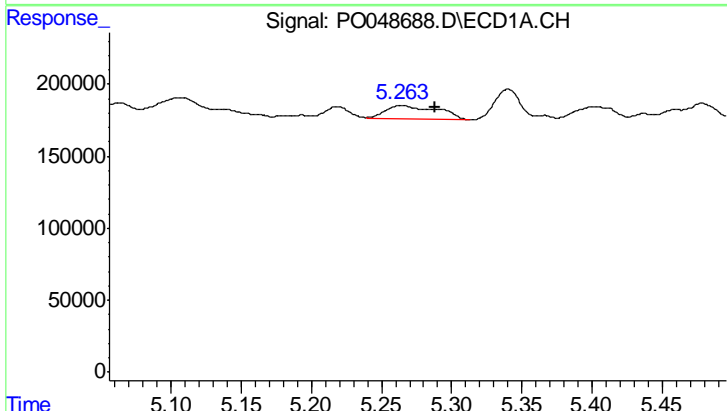


#3 AR-1016-1
 R.T.: 5.108 min
 Delta R.T.: 0.013 min
 Response: 226741
 Conc: 47.54 ng/ml

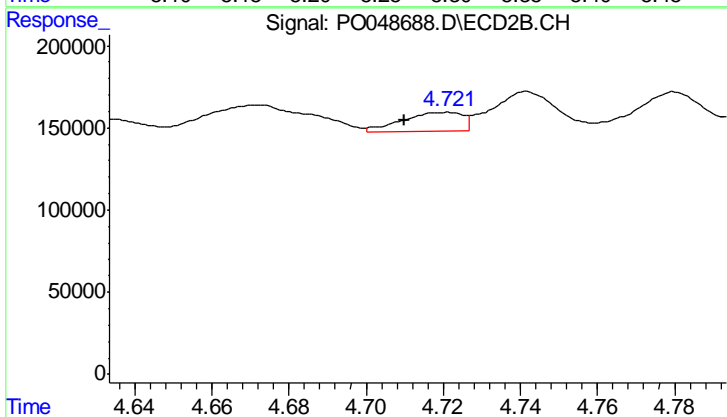
Instrument :
 ECD_O
ClientSampleId :
 OILY-DEBRIS-DRUM-2



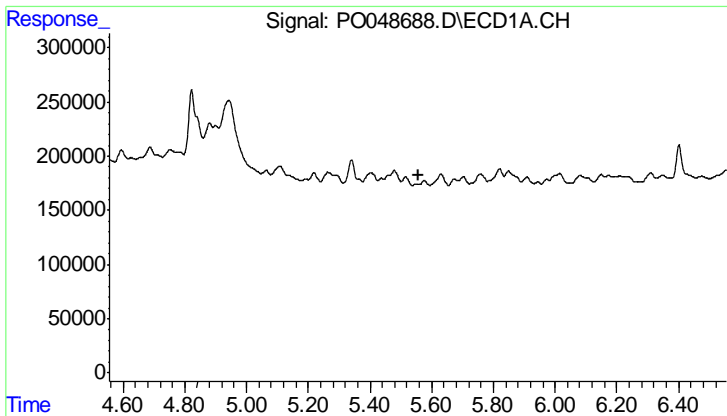
#3 AR-1016-1
 R.T.: 4.277 min
 Delta R.T.: -0.024 min
 Response: 40505
 Conc: 6.76 ng/ml



#4 AR-1016-2
 R.T.: 5.264 min
 Delta R.T.: -0.025 min
 Response: 244510
 Conc: 52.14 ng/ml

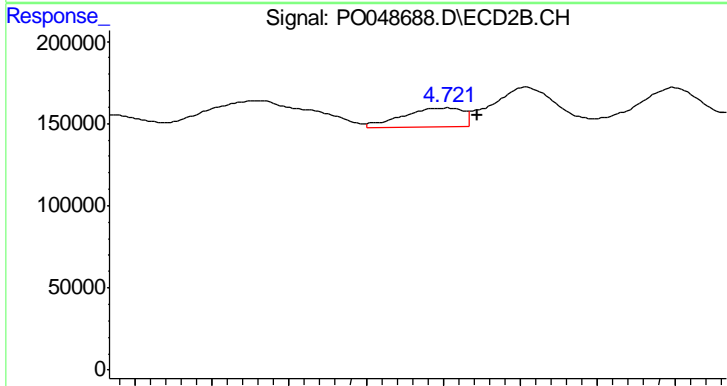


#4 AR-1016-2
 R.T.: 4.720 min
 Delta R.T.: 0.010 min
 Response: 129707
 Conc: 14.77 ng/ml

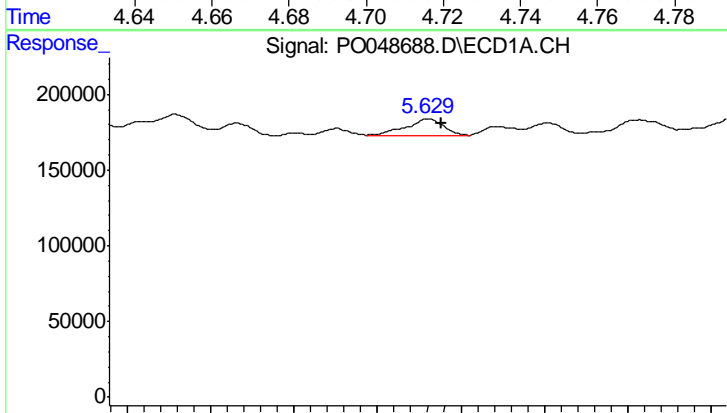


#5 AR-1016-3
 R.T.: 0.000 min
 Exp R.T.: 5.556 min
 Response: 0
 Conc: N.D.

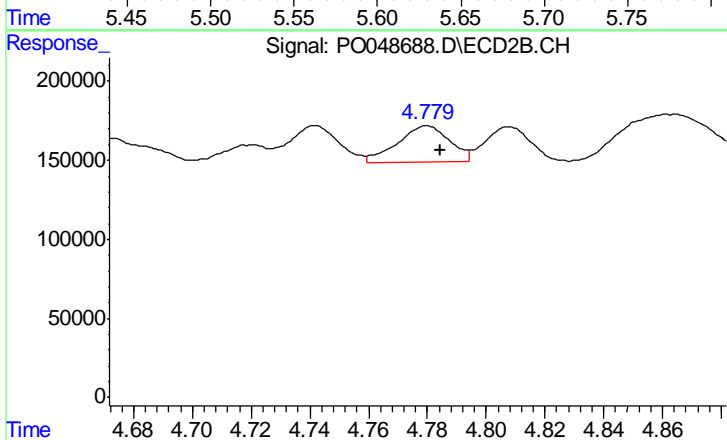
Instrument :
 ECD_O
ClientSampleId :
 OILY-DEBRIS-DRUM-2



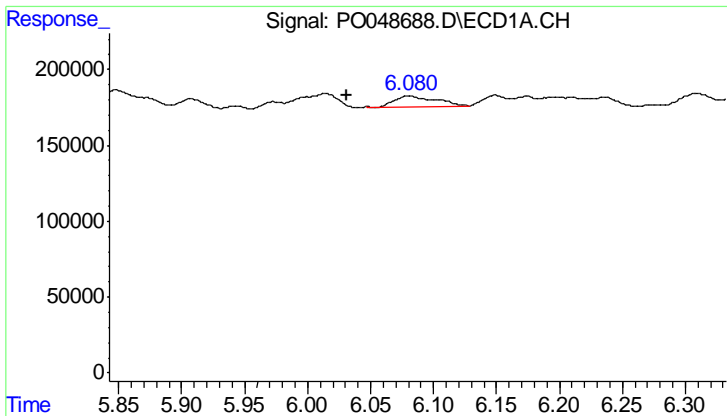
#5 AR-1016-3
 R.T.: 4.720 min
 Delta R.T.: -0.009 min
 Response: 129707
 Conc: 10.13 ng/ml



#6 AR-1016-4
 R.T.: 5.630 min
 Delta R.T.: -0.008 min
 Response: 163062
 Conc: 26.82 ng/ml

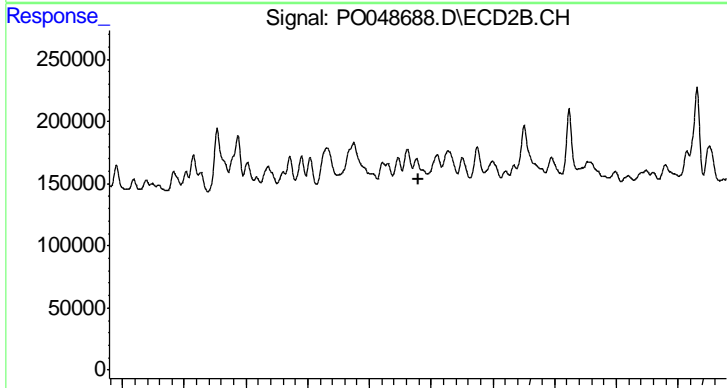


#6 AR-1016-4
 R.T.: 4.780 min
 Delta R.T.: -0.004 min
 Response: 286209
 Conc: 34.90 ng/ml

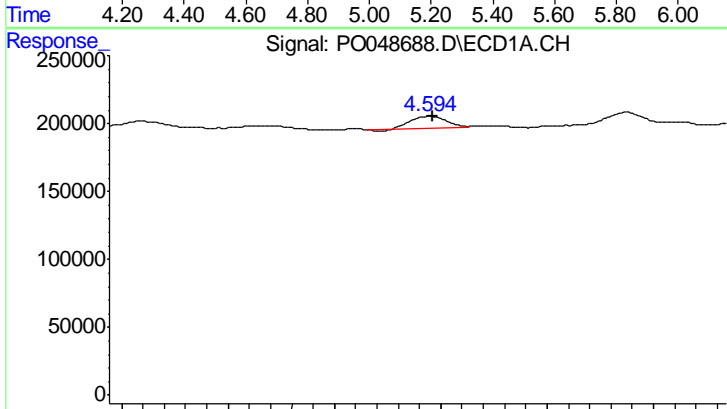


#7 AR-1016-5
 R.T.: 6.080 min
 Delta R.T.: 0.049 min
 Response: 166729
 Conc: 33.39 ng/ml

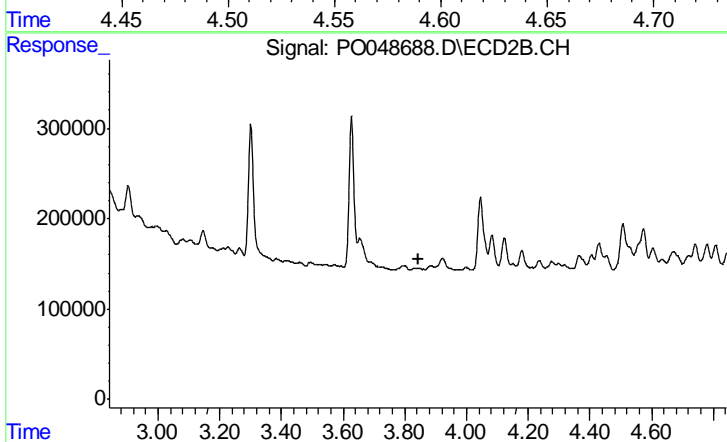
Instrument :
 ECD_O
ClientSampleId :
 OILY-DEBRIS-DRUM-2



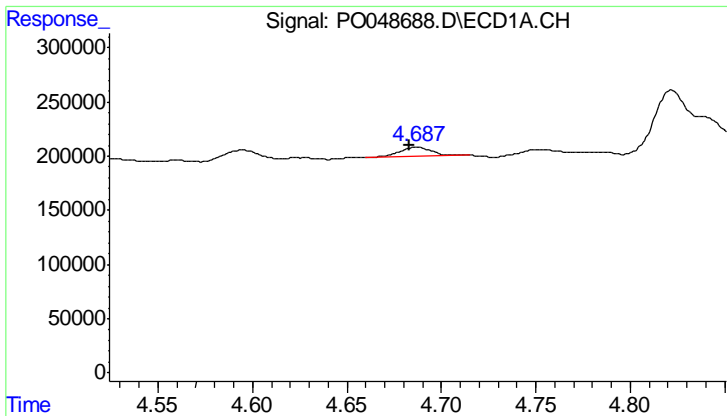
#7 AR-1016-5
 R.T.: 5.152 min
 Delta R.T.: -0.005 min
 Response: -55055
 Conc: N.D.



#8 AR-1221-1
 R.T.: 4.595 min
 Delta R.T.: -0.002 min
 Response: 92880
 Conc: 44.18 ng/ml

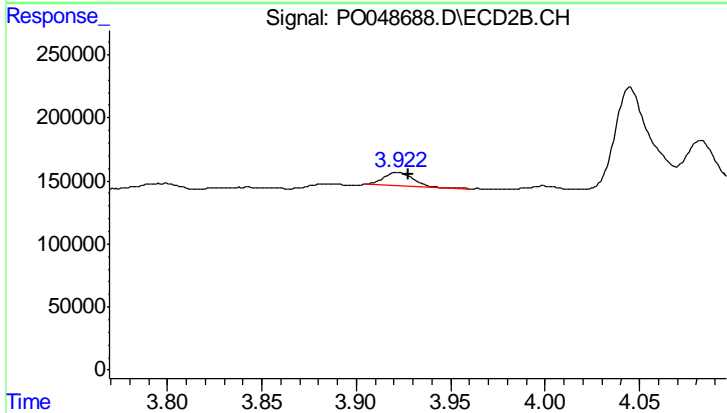


#8 AR-1221-1
 R.T.: 0.000 min
 Exp R.T. : 3.843 min
 Response: 0
 Conc: N.D.

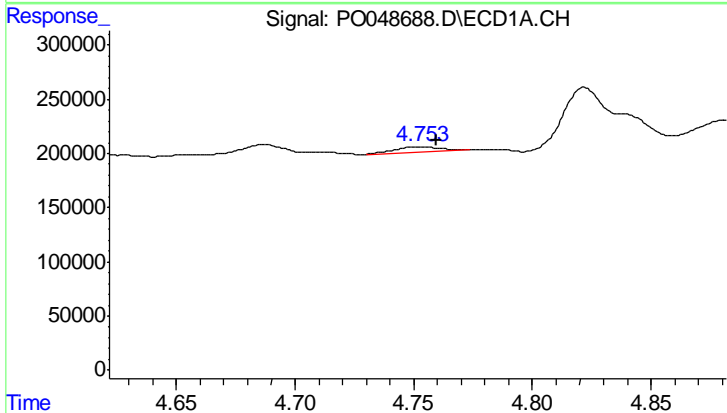


#9 AR-1221-2
 R.T.: 4.687 min
 Delta R.T.: 0.004 min
 Response: 99464
 Conc: 65.60 ng/ml

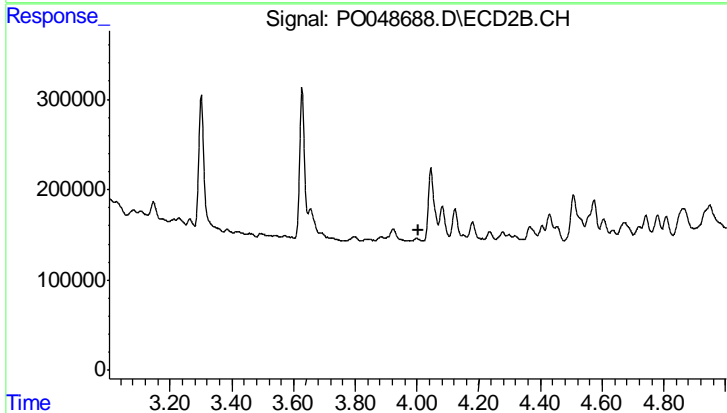
Instrument :
 ECD_O
ClientSampleId :
 OILY-DEBRIS-DRUM-2



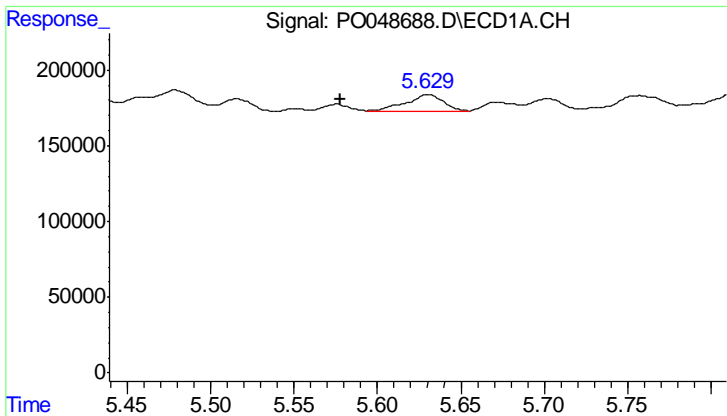
#9 AR-1221-2
 R.T.: 3.922 min
 Delta R.T.: -0.006 min
 Response: 110232
 Conc: 57.30 ng/ml



#10 AR-1221-3
 R.T.: 4.753 min
 Delta R.T.: -0.007 min
 Response: 59665
 Conc: 12.03 ng/ml



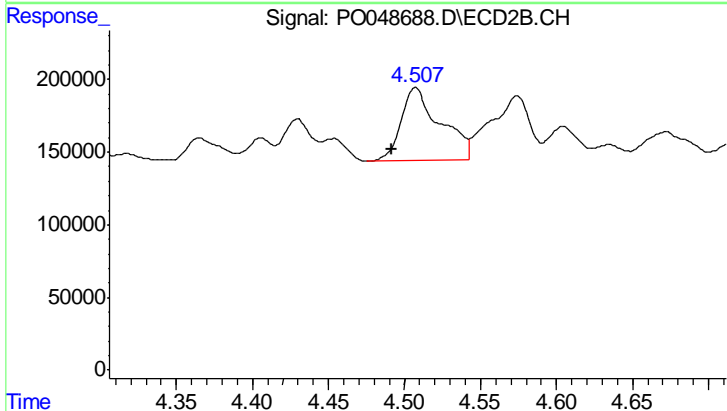
#10 AR-1221-3
 R.T.: 0.000 min
 Exp R.T. : 4.003 min
 Response: 0
 Conc: N.D.



#11 AR-1232-1

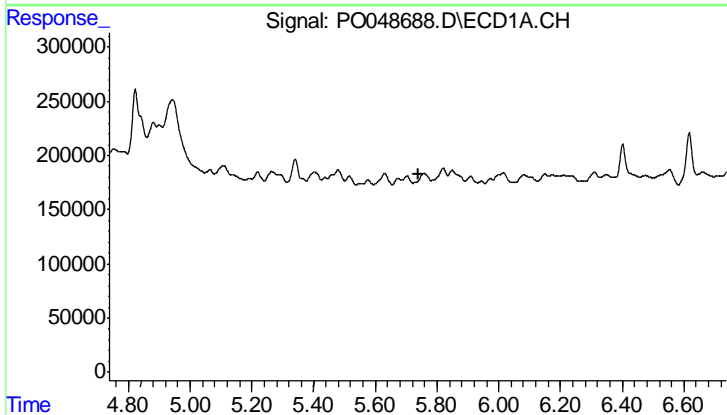
R.T.: 5.630 min
 Delta R.T.: 0.053 min
 Response: 163062
 Conc: 36.29 ng/ml

Instrument :
 ECD_O
 ClientSampleId :
 OILY-DEBRIS-DRUM-2



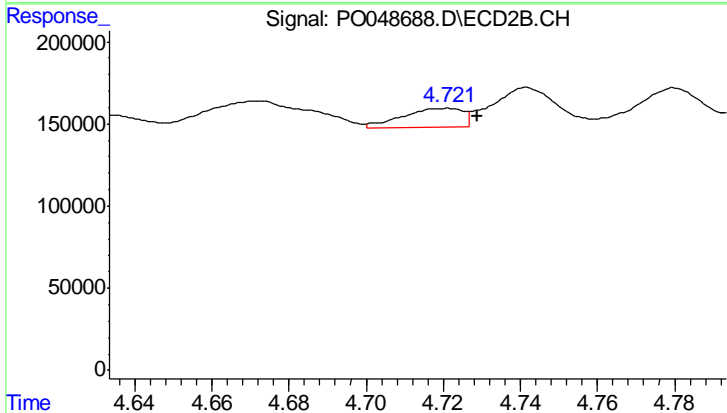
#11 AR-1232-1

R.T.: 4.507 min
 Delta R.T.: 0.015 min
 Response: 912310
 Conc: 312.60 ng/ml



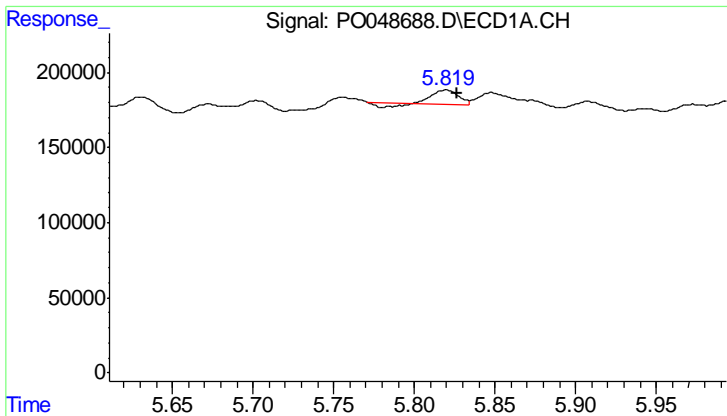
#12 AR-1232-2

R.T.: 5.756 min
 Delta R.T.: 0.018 min
 Response: -12972
 Conc: N.D.



#12 AR-1232-2

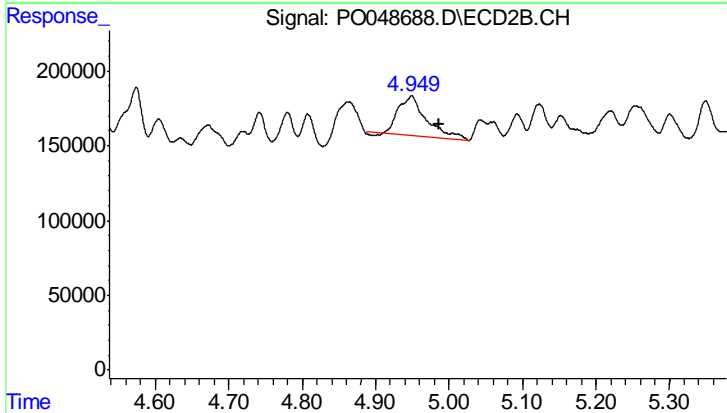
R.T.: 4.720 min
 Delta R.T.: -0.009 min
 Response: 129707
 Conc: 21.66 ng/ml



#13 AR-1232-3

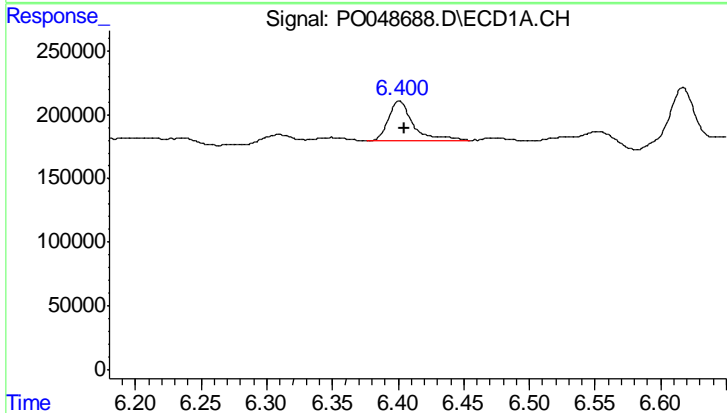
R.T.: 5.820 min
 Delta R.T.: -0.007 min
 Response: 101496
 Conc: 60.36 ng/ml

Instrument :
 ECD_O
 ClientSampleId :
 OILY-DEBRIS-DRUM-2



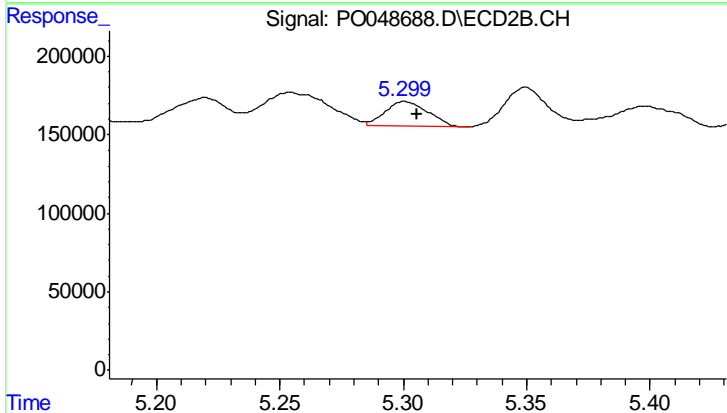
#13 AR-1232-3

R.T.: 4.949 min
 Delta R.T.: -0.037 min
 Response: 702455
 Conc: 267.27 ng/ml



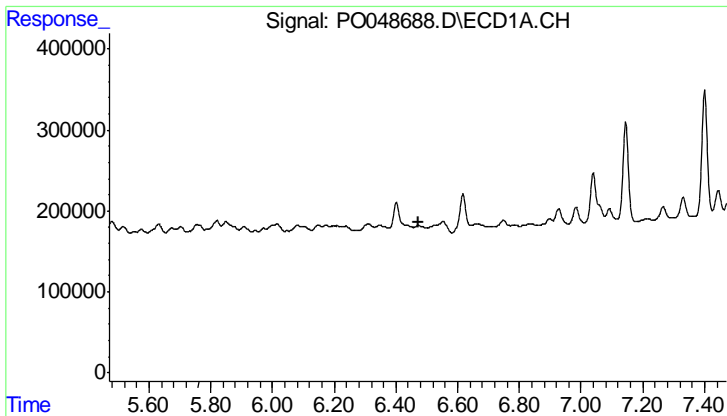
#14 AR-1232-4

R.T.: 6.401 min
 Delta R.T.: -0.004 min
 Response: 407323
 Conc: 251.48 ng/ml



#14 AR-1232-4

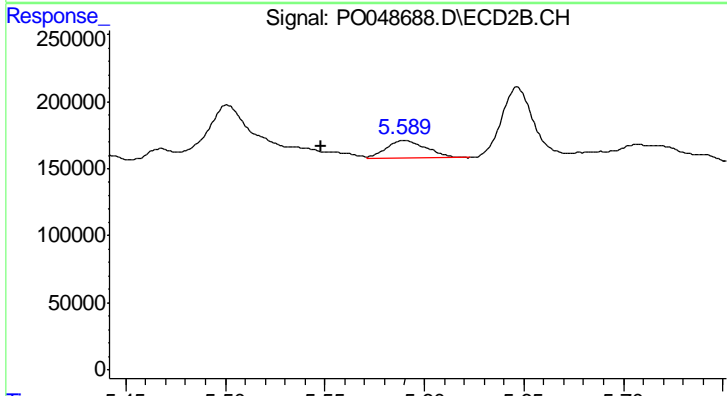
R.T.: 5.300 min
 Delta R.T.: -0.005 min
 Response: 190920
 Conc: 68.82 ng/ml



#15 AR-1232-5

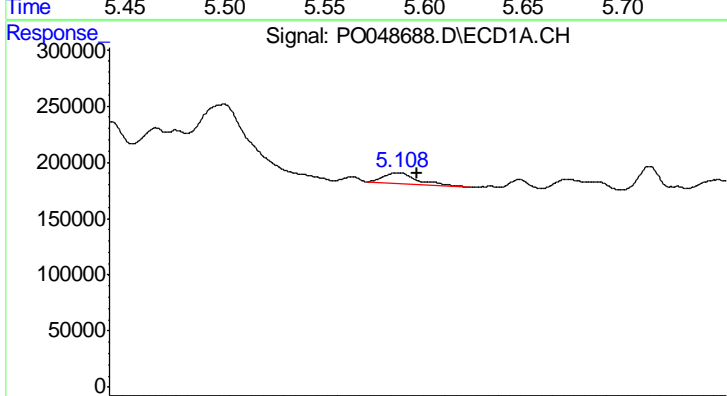
R.T.: 0.000 min
 Exp R.T.: 6.472 min
 Response: 0
 Conc: N.D.

Instrument :
 ECD_O
 ClientSampleId :
 OILY-DEBRIS-DRUM-2



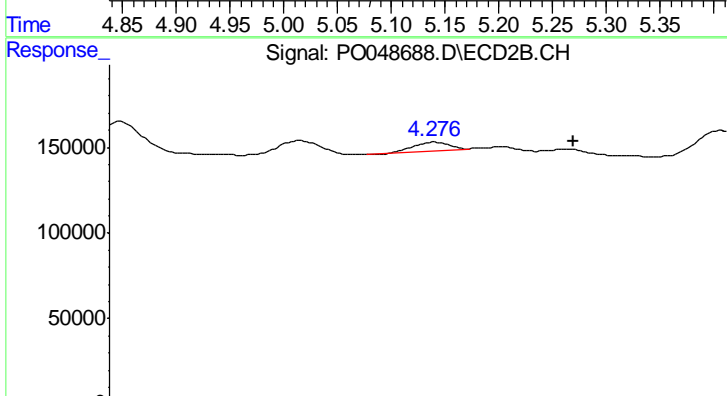
#15 AR-1232-5

R.T.: 5.590 min
 Delta R.T.: 0.042 min
 Response: 191736
 Conc: 62.29 ng/ml



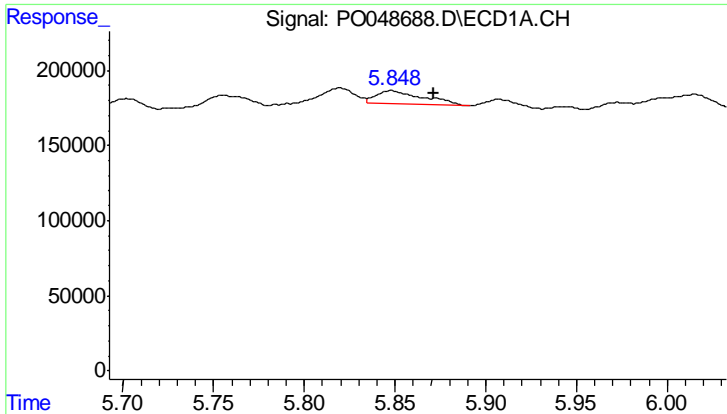
#16 AR-1242-1

R.T.: 5.108 min
 Delta R.T.: -0.016 min
 Response: 226741
 Conc: 94.65 ng/ml



#16 AR-1242-1

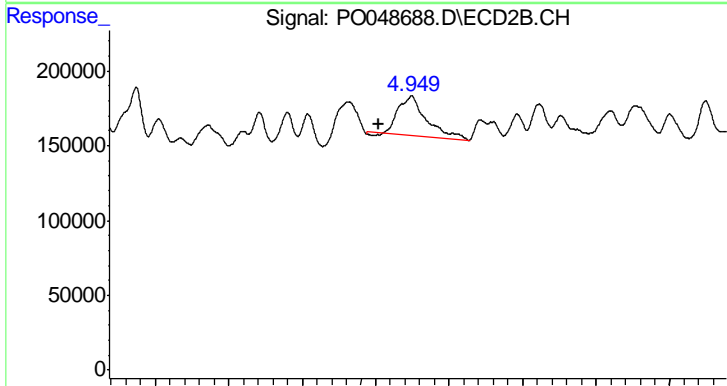
R.T.: 4.277 min
 Delta R.T.: -0.043 min
 Response: 40505
 Conc: 11.58 ng/ml



#17 AR-1242-2

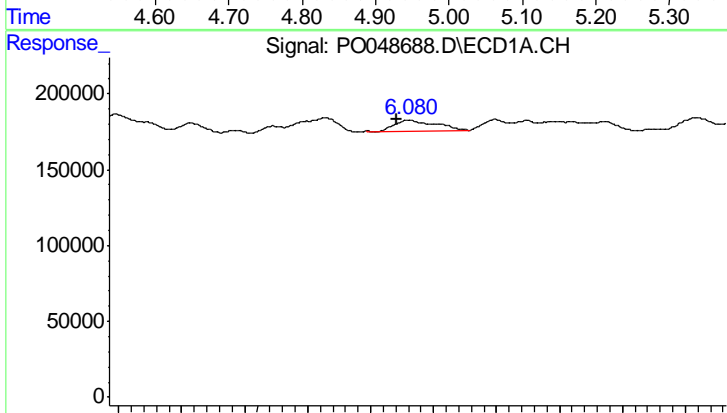
R.T.: 5.848 min
 Delta R.T.: -0.024 min
 Response: 167145
 Conc: 46.12 ng/ml

Instrument :
 ECD_O
ClientSampleId :
 OILY-DEBRIS-DRUM-2



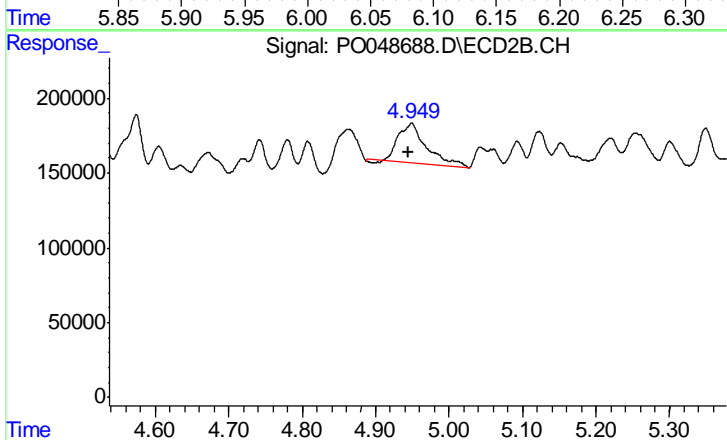
#17 AR-1242-2

R.T.: 4.949 min
 Delta R.T.: 0.045 min
 Response: 702455
 Conc: 128.42 ng/ml



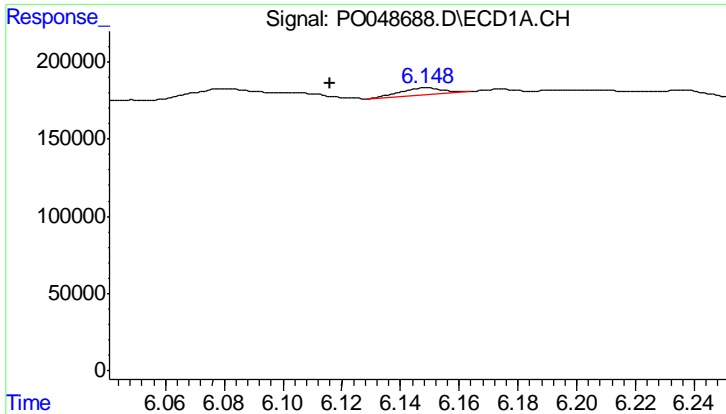
#18 AR-1242-3

R.T.: 6.080 min
 Delta R.T.: 0.009 min
 Response: 166729
 Conc: 96.62 ng/ml



#18 AR-1242-3

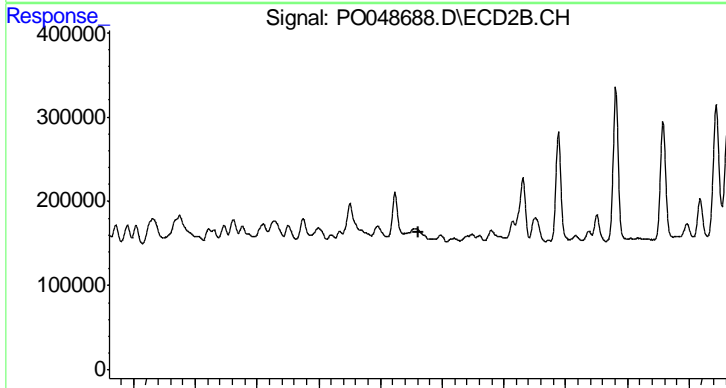
R.T.: 4.949 min
 Delta R.T.: 0.005 min
 Response: 702455
 Conc: 167.39 ng/ml



#19 AR-1242-4

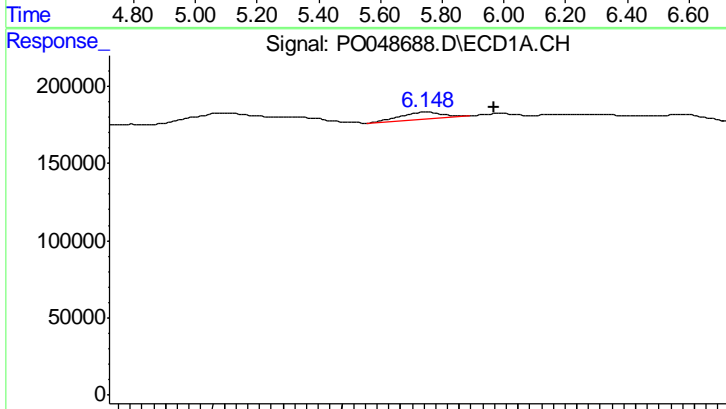
R.T.: 6.149 min
 Delta R.T.: 0.033 min
 Response: 44711
 Conc: 34.66 ng/ml

Instrument :
 ECD_O
 ClientSampleId :
 OILY-DEBRIS-DRUM-2



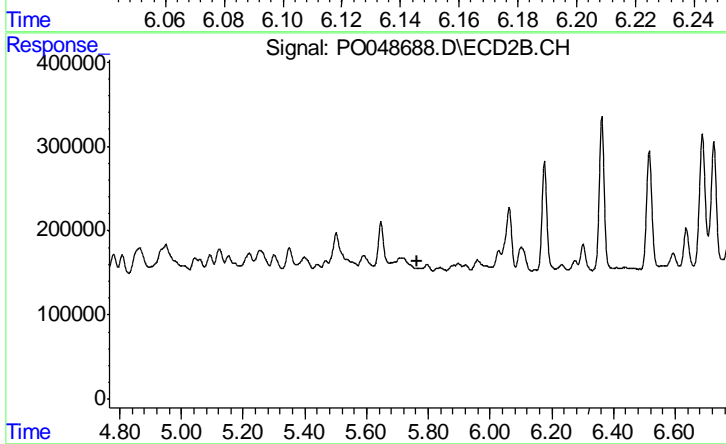
#19 AR-1242-4

R.T.: 0.000 min
 Exp R.T. : 5.721 min
 Response: 0
 Conc: N.D.



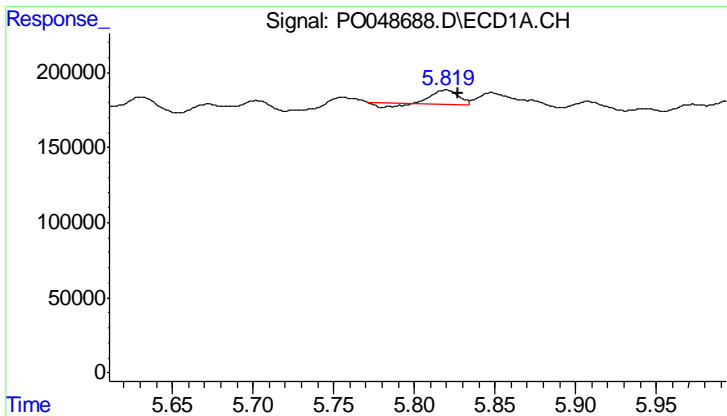
#20 AR-1242-5

R.T.: 6.149 min
 Delta R.T.: -0.023 min
 Response: 44711
 Conc: 10.01 ng/ml



#20 AR-1242-5

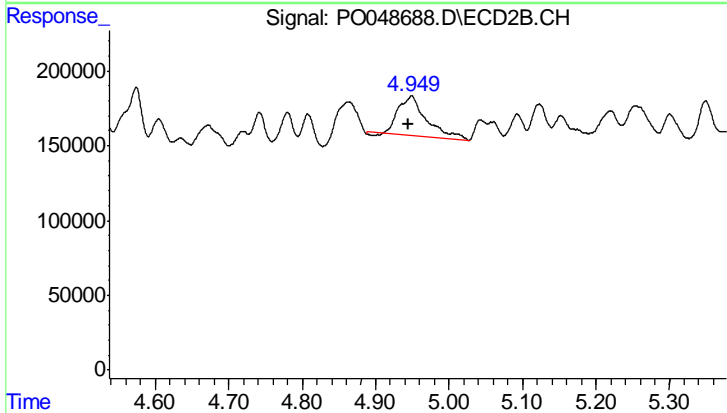
R.T.: 0.000 min
 Exp R.T. : 5.766 min
 Response: 0
 Conc: N.D.



#21 AR-1248-1

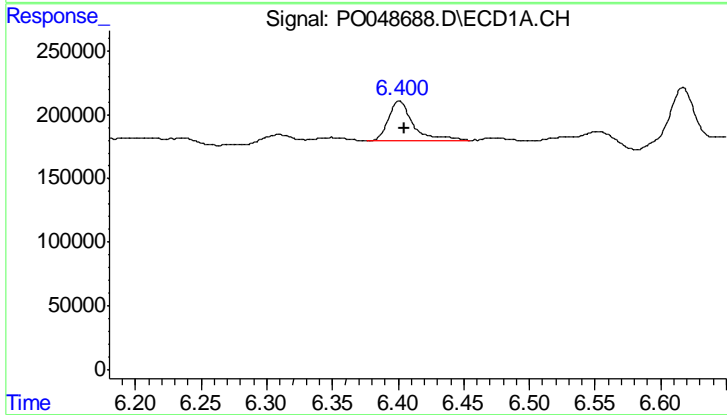
R.T.: 5.820 min
 Delta R.T.: -0.007 min
 Response: 101496
 Conc: 17.19 ng/ml

Instrument :
 ECD_O
 ClientSampleId :
 OILY-DEBRIS-DRUM-2



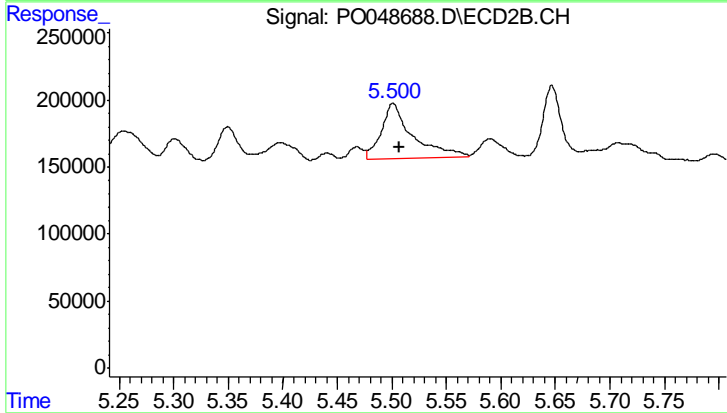
#21 AR-1248-1

R.T.: 4.949 min
 Delta R.T.: 0.005 min
 Response: 702455
 Conc: 92.70 ng/ml



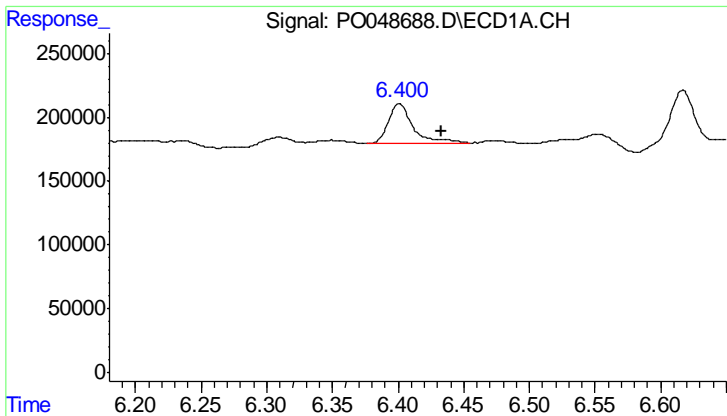
#22 AR-1248-2

R.T.: 6.401 min
 Delta R.T.: -0.004 min
 Response: 407323
 Conc: 70.08 ng/ml



#22 AR-1248-2

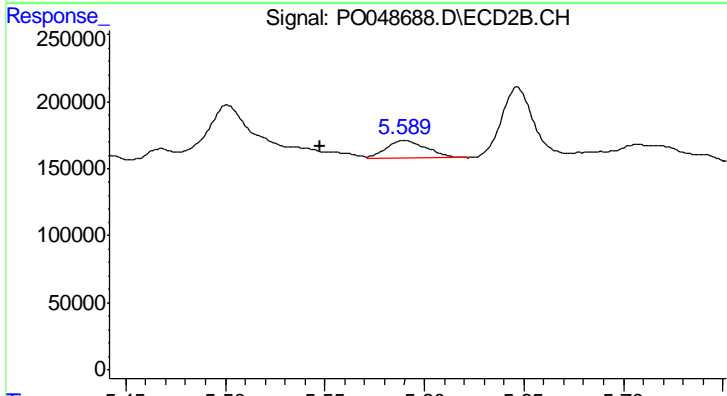
R.T.: 5.501 min
 Delta R.T.: -0.006 min
 Response: 826434
 Conc: 62.77 ng/ml



#23 AR-1248-3

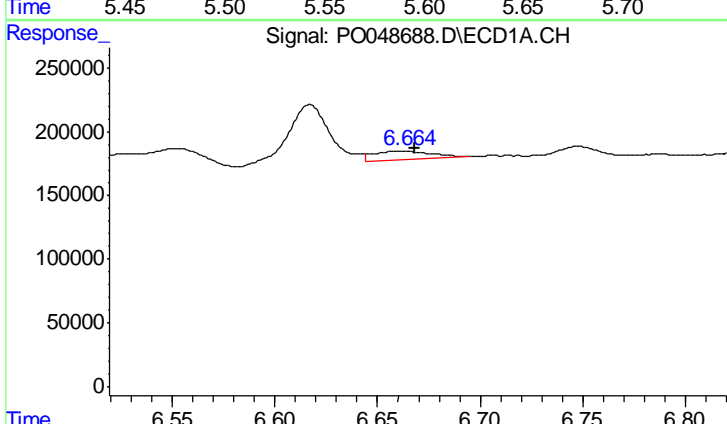
R.T.: 6.401 min
 Delta R.T.: -0.032 min
 Response: 407323
 Conc: 52.78 ng/ml

Instrument :
 ECD_O
 ClientSampleId :
 OILY-DEBRIS-DRUM-2



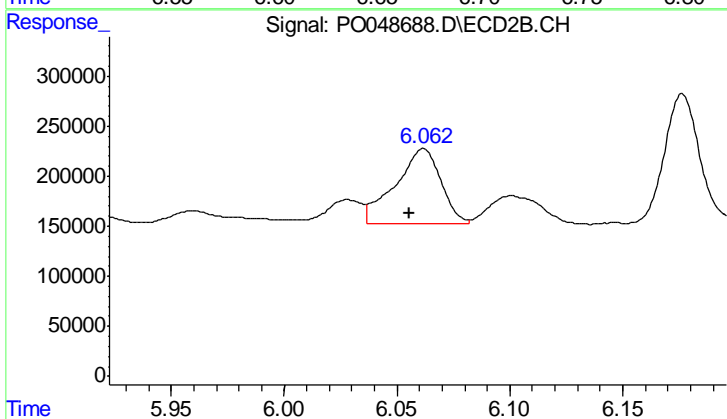
#23 AR-1248-3

R.T.: 5.590 min
 Delta R.T.: 0.042 min
 Response: 191736
 Conc: 21.02 ng/ml



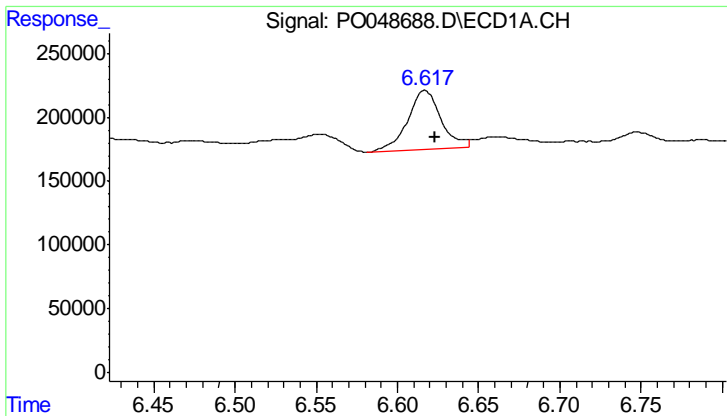
#25 AR-1248-5

R.T.: 6.664 min
 Delta R.T.: -0.004 min
 Response: 130082
 Conc: 26.89 ng/ml



#25 AR-1248-5

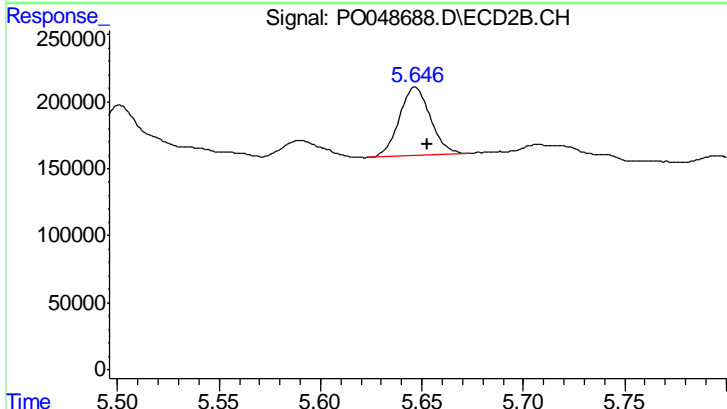
R.T.: 6.062 min
 Delta R.T.: 0.006 min
 Response: 1073986
 Conc: 179.17 ng/ml



#26 AR-1254-1

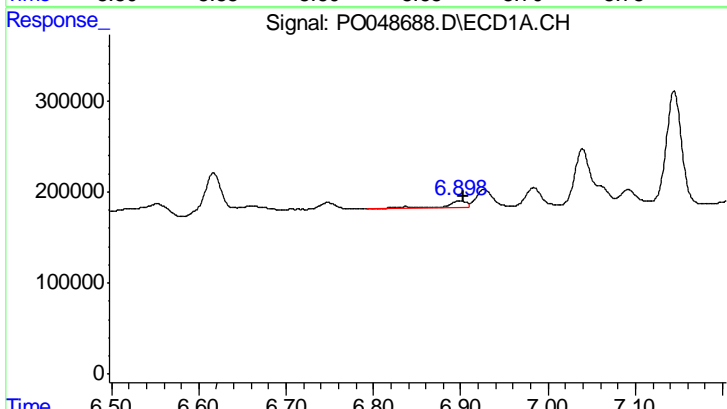
R.T.: 6.617 min
 Delta R.T.: -0.006 min
 Response: 655484
 Conc: 48.29 ng/ml

Instrument :
 ECD_O
 ClientSampleId :
 OILY-DEBRIS-DRUM-2



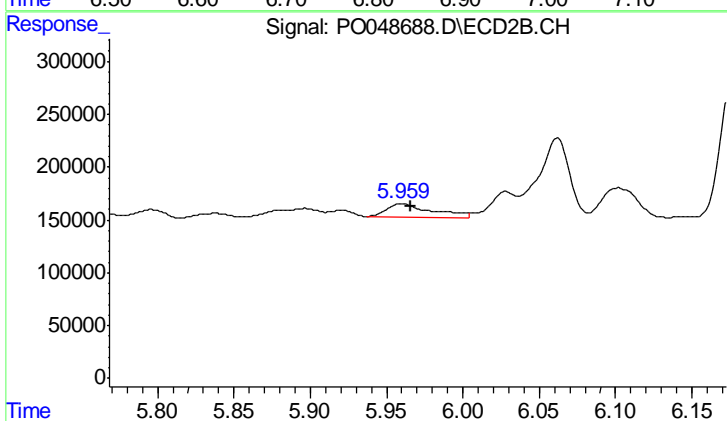
#26 AR-1254-1

R.T.: 5.647 min
 Delta R.T.: -0.006 min
 Response: 542108
 Conc: 37.68 ng/ml



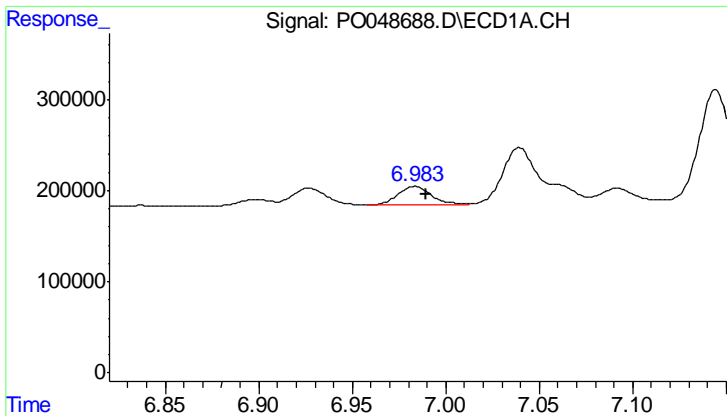
#27 AR-1254-2

R.T.: 6.898 min
 Delta R.T.: -0.005 min
 Response: 106790
 Conc: 12.94 ng/ml



#27 AR-1254-2

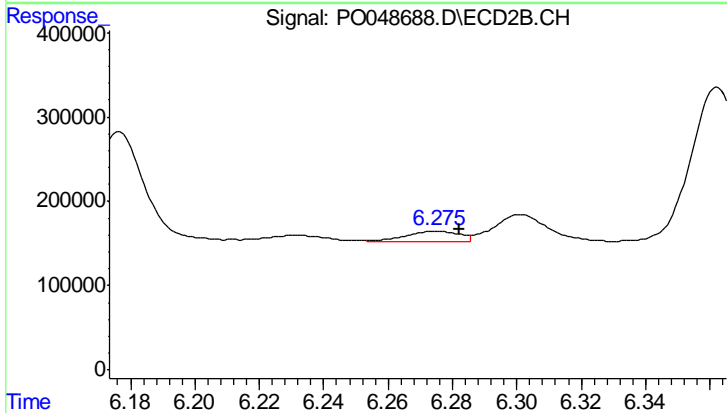
R.T.: 5.960 min
 Delta R.T.: -0.006 min
 Response: 268579
 Conc: 23.19 ng/ml



#28 AR-1254-3

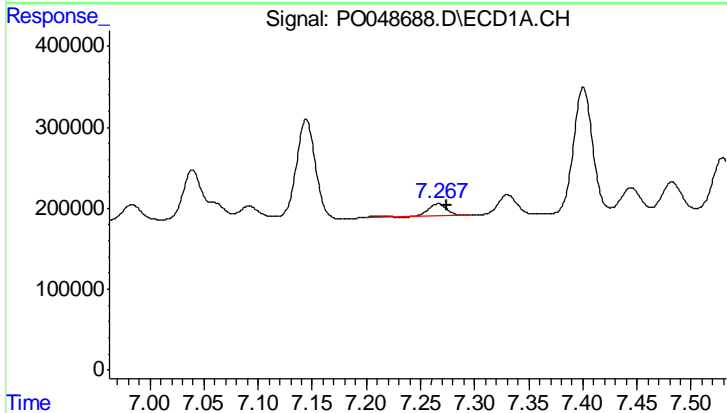
R.T.: 6.983 min
 Delta R.T.: -0.006 min
 Response: 260719
 Conc: 18.17 ng/ml

Instrument :
 ECD_O
 ClientSampleId :
 OILY-DEBRIS-DRUM-2



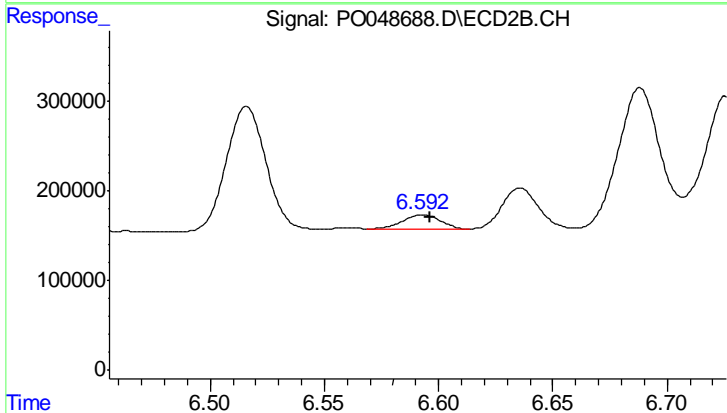
#28 AR-1254-3

R.T.: 6.275 min
 Delta R.T.: -0.007 min
 Response: 138405
 Conc: 9.45 ng/ml



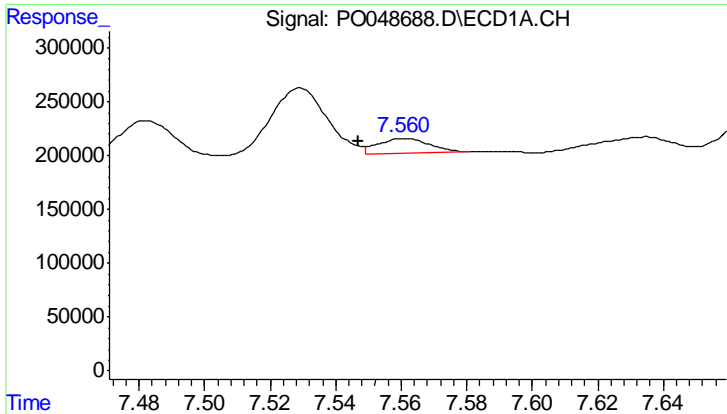
#29 AR-1254-4

R.T.: 7.267 min
 Delta R.T.: -0.007 min
 Response: 184809
 Conc: 16.82 ng/ml



#29 AR-1254-4

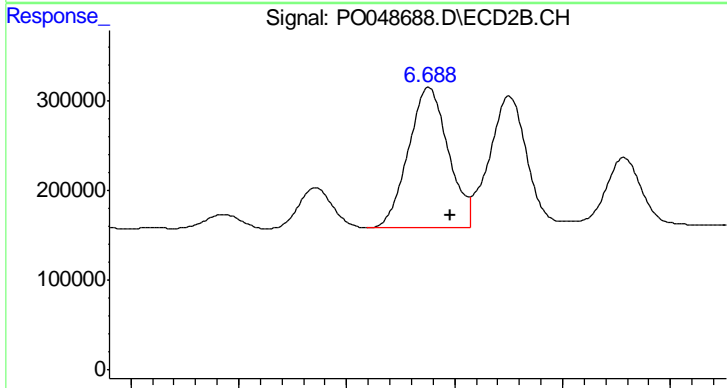
R.T.: 6.593 min
 Delta R.T.: -0.003 min
 Response: 176119
 Conc: 17.90 ng/ml



#30 AR-1254-5

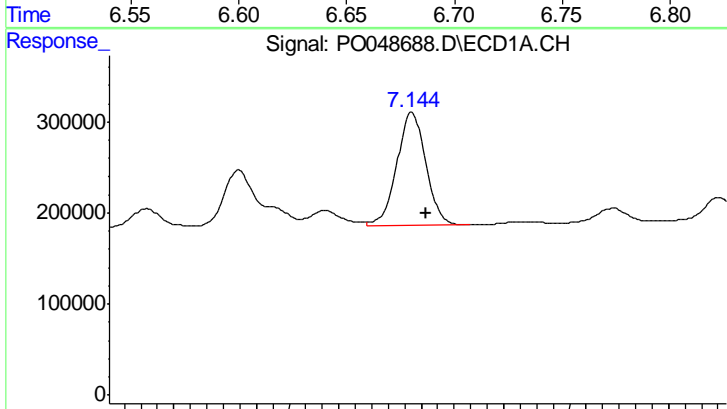
R.T.: 7.561 min
 Delta R.T.: 0.014 min
 Response: 145722
 Conc: 17.88 ng/ml

Instrument :
 ECD_O
ClientSampleId :
 OILY-DEBRIS-DRUM-2



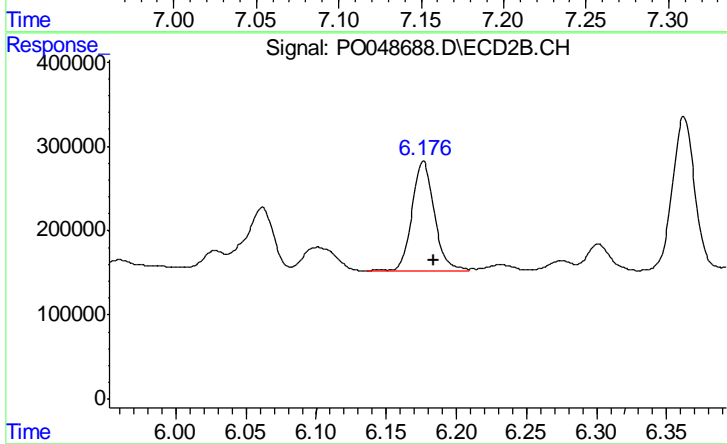
#30 AR-1254-5

R.T.: 6.688 min
 Delta R.T.: -0.010 min
 Response: 1995868
 Conc: 102.42 ng/ml



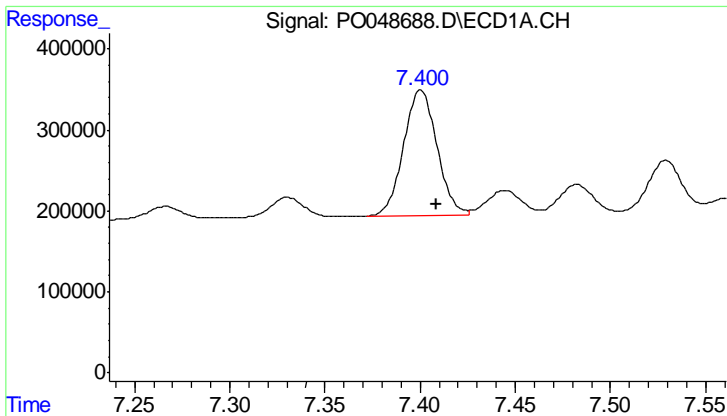
#31 AR-1260-1

R.T.: 7.144 min
 Delta R.T.: -0.008 min
 Response: 1527601
 Conc: 153.35 ng/ml



#31 AR-1260-1

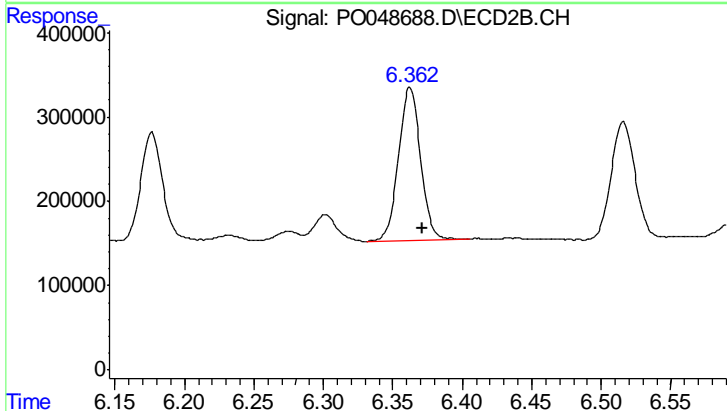
R.T.: 6.176 min
 Delta R.T.: -0.008 min
 Response: 1451623
 Conc: 104.82 ng/ml



#32 AR-1260-2

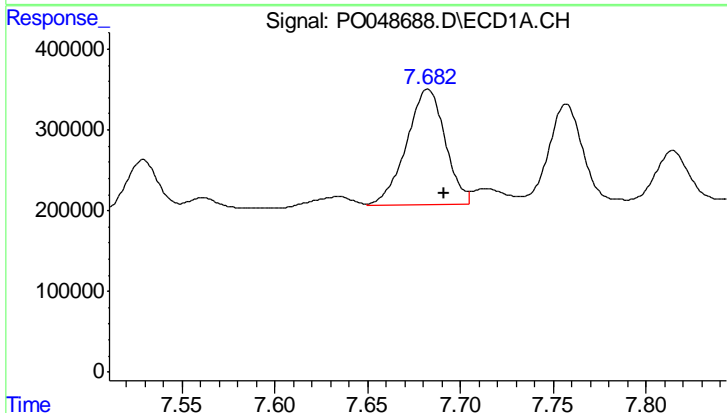
R.T.: 7.400 min
 Delta R.T.: -0.008 min
 Response: 1895529
 Conc: 158.24 ng/ml

Instrument :
 ECD_O
 ClientSampleId :
 OILY-DEBRIS-DRUM-2



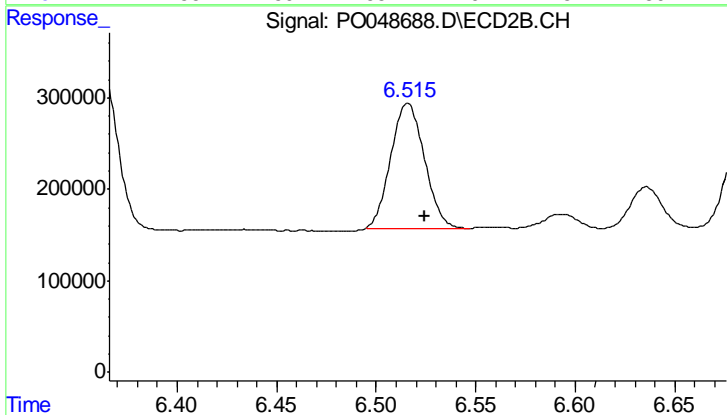
#32 AR-1260-2

R.T.: 6.362 min
 Delta R.T.: -0.009 min
 Response: 1987746
 Conc: 113.30 ng/ml



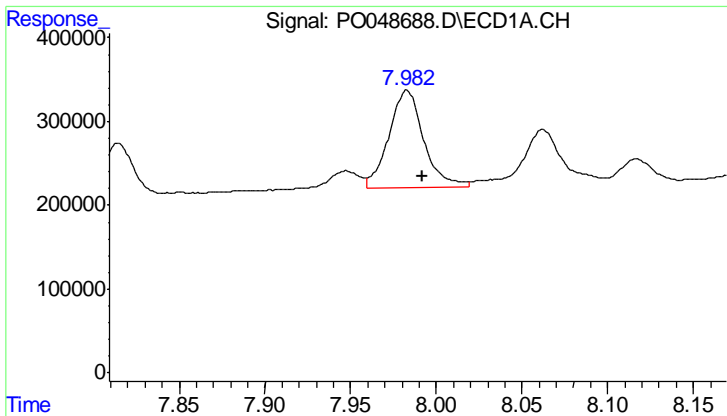
#33 AR-1260-3

R.T.: 7.683 min
 Delta R.T.: -0.009 min
 Response: 2072638
 Conc: 151.02 ng/ml



#33 AR-1260-3

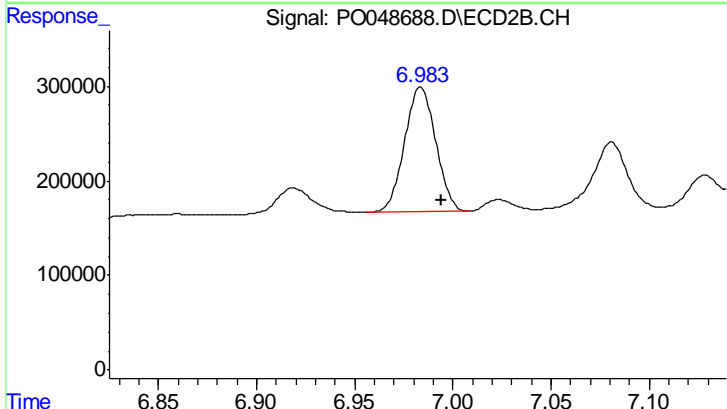
R.T.: 6.516 min
 Delta R.T.: -0.009 min
 Response: 1601427
 Conc: 104.44 ng/ml



#34 AR-1260-4

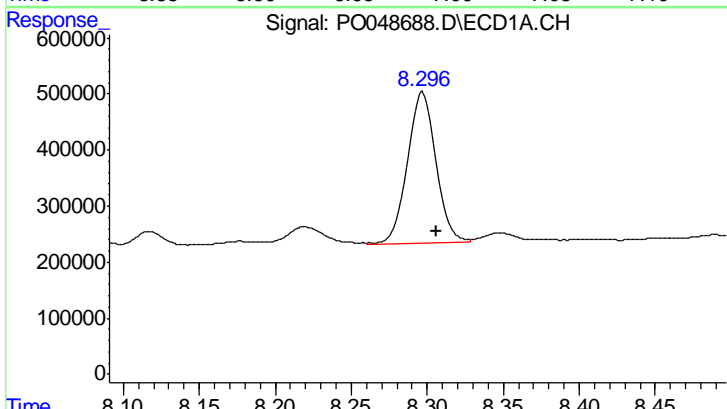
R.T.: 7.983 min
 Delta R.T.: -0.009 min
 Response: 1653213
 Conc: 166.98 ng/ml

Instrument :
 ECD_O
 ClientSampleId :
 OILY-DEBRIS-DRUM-2



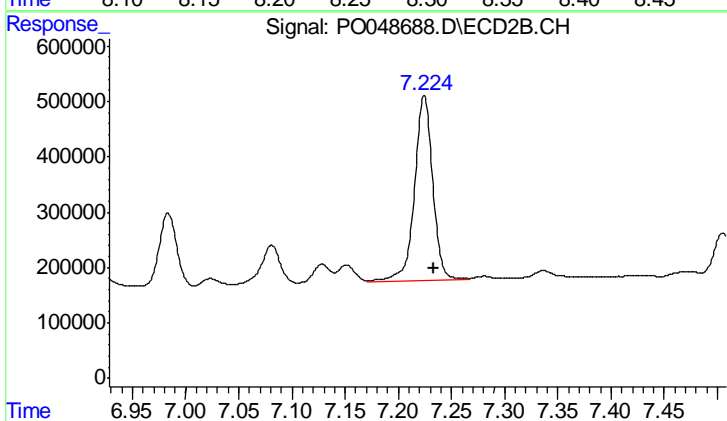
#34 AR-1260-4

R.T.: 6.984 min
 Delta R.T.: -0.011 min
 Response: 1466874
 Conc: 126.02 ng/ml



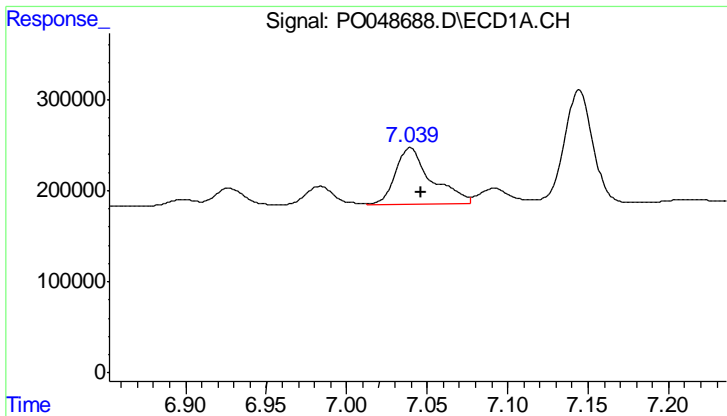
#35 AR-1260-5

R.T.: 8.297 min
 Delta R.T.: -0.009 min
 Response: 3617999
 Conc: 189.52 ng/ml



#35 AR-1260-5

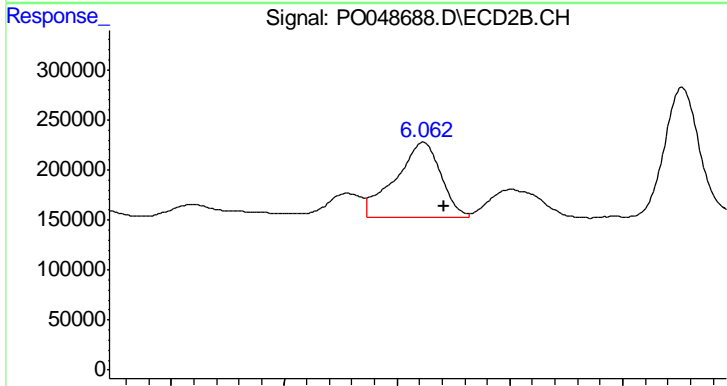
R.T.: 7.224 min
 Delta R.T.: -0.009 min
 Response: 3964933
 Conc: 146.42 ng/ml



#36 AR-1262-1

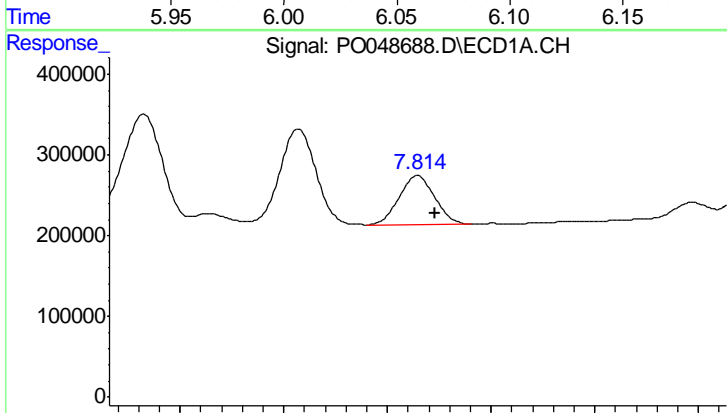
R.T.: 7.039 min
 Delta R.T.: -0.007 min
 Response: 975676
 Conc: 124.93 ng/ml

Instrument :
 ECD_O
ClientSampleId :
 OILY-DEBRIS-DRUM-2



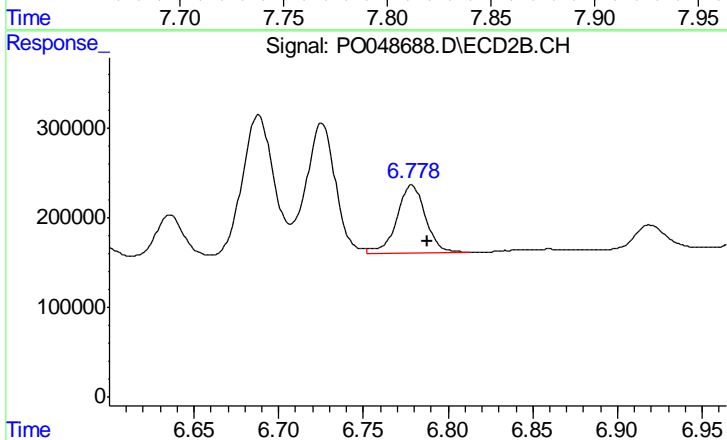
#36 AR-1262-1

R.T.: 6.062 min
 Delta R.T.: -0.009 min
 Response: 1073986
 Conc: 101.04 ng/ml



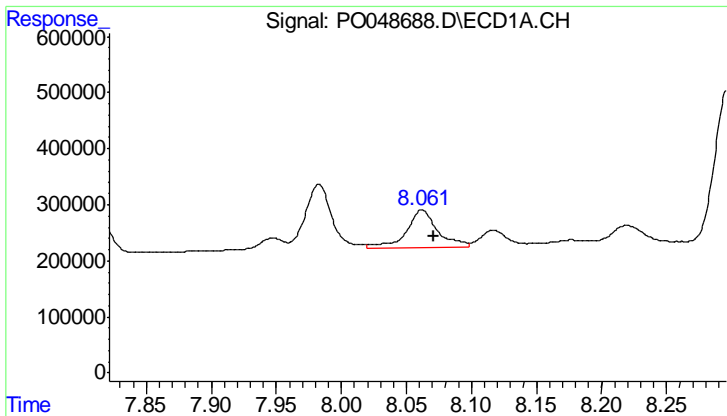
#37 AR-1262-2

R.T.: 7.815 min
 Delta R.T.: -0.008 min
 Response: 726839
 Conc: 112.88 ng/ml



#37 AR-1262-2

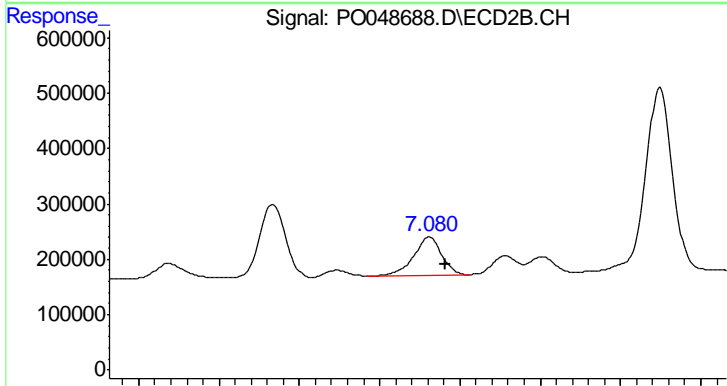
R.T.: 6.779 min
 Delta R.T.: -0.009 min
 Response: 904348
 Conc: 94.60 ng/ml



#38 AR-1262-3

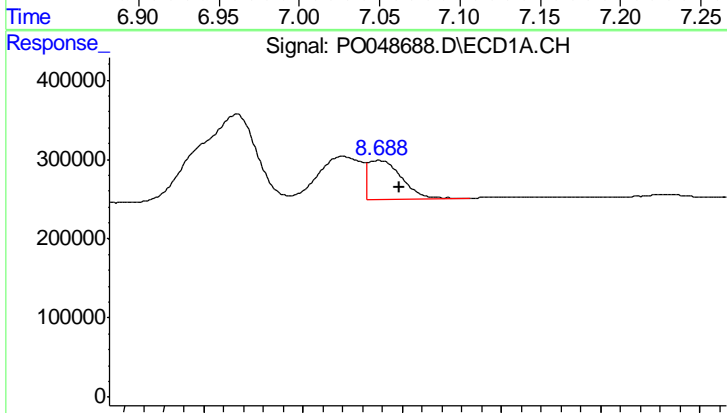
R.T.: 8.062 min
 Delta R.T.: -0.009 min
 Response: 1108033
 Conc: 160.48 ng/ml

Instrument :
 ECD_O
 ClientSampleId :
 OILY-DEBRIS-DRUM-2



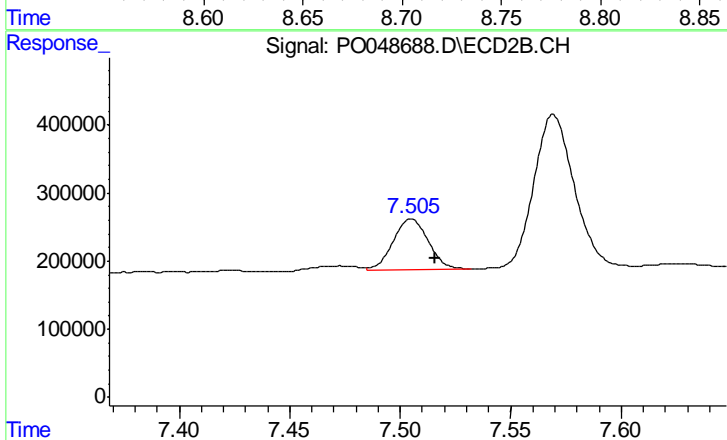
#38 AR-1262-3

R.T.: 7.081 min
 Delta R.T.: -0.010 min
 Response: 853559
 Conc: 90.40 ng/ml



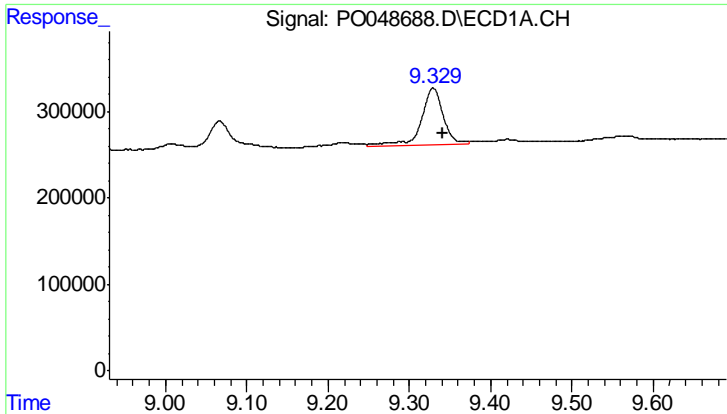
#39 AR-1262-4

R.T.: 8.688 min
 Delta R.T.: -0.010 min
 Response: 579719
 Conc: 42.44 ng/ml



#39 AR-1262-4

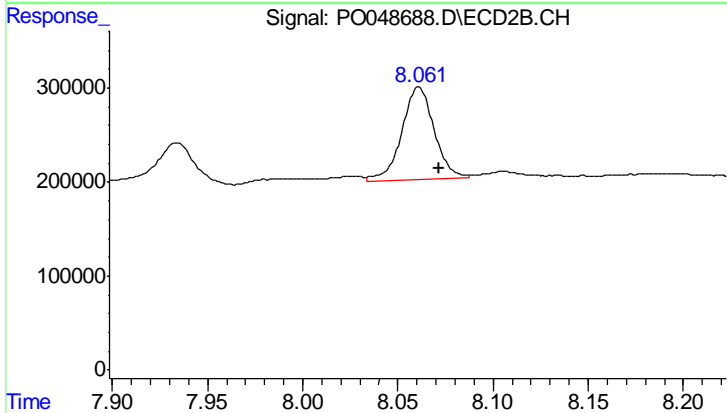
R.T.: 7.505 min
 Delta R.T.: -0.011 min
 Response: 830585
 Conc: 61.72 ng/ml



#40 AR-1262-5

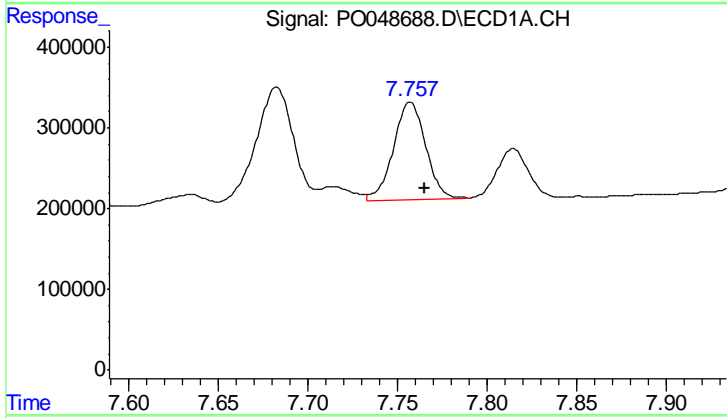
R.T.: 9.329 min
 Delta R.T.: -0.012 min
 Response: 1244763
 Conc: 134.62 ng/ml

Instrument :
 ECD_O
 ClientSampleId :
 OILY-DEBRIS-DRUM-2



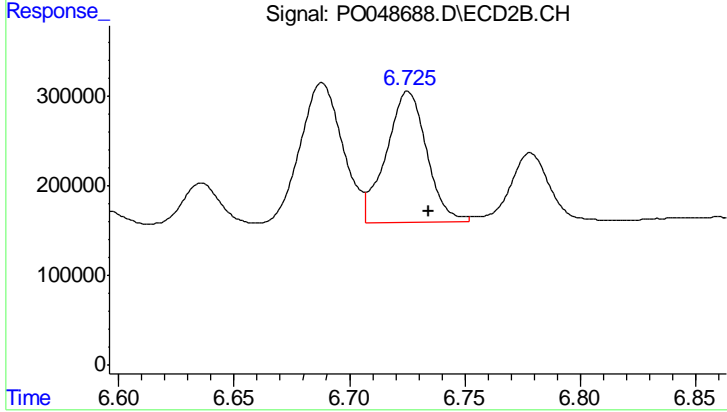
#40 AR-1262-5

R.T.: 8.061 min
 Delta R.T.: -0.010 min
 Response: 1163854
 Conc: 113.00 ng/ml



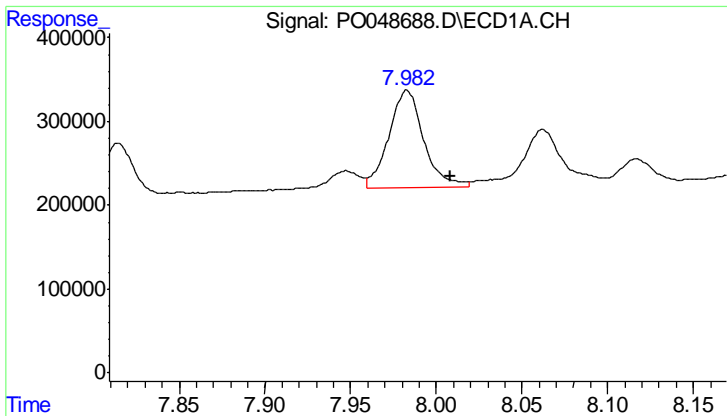
#41 AR-1268-1

R.T.: 7.757 min
 Delta R.T.: -0.008 min
 Response: 1523691
 Conc: 287.16 ng/ml



#41 AR-1268-1

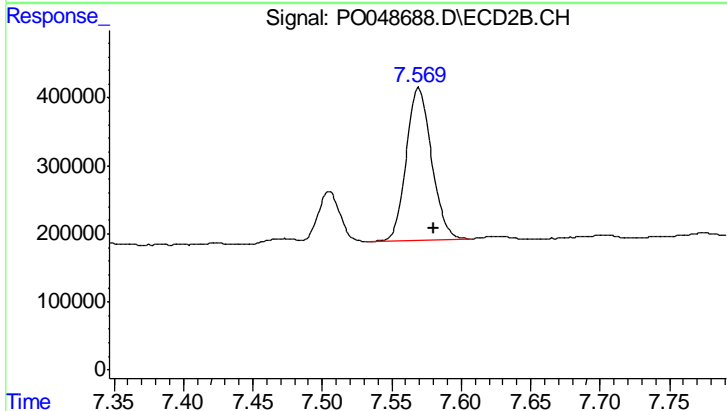
R.T.: 6.725 min
 Delta R.T.: -0.009 min
 Response: 1779499
 Conc: 230.05 ng/ml



#42 AR-1268-2

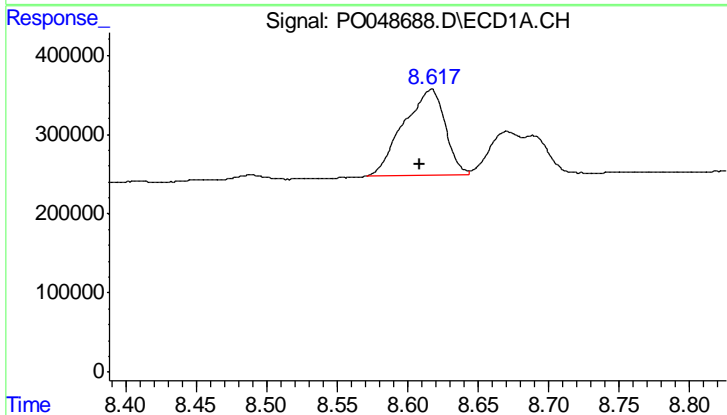
R.T.: 7.983 min
 Delta R.T.: -0.026 min
 Response: 1653213
 Conc: 242.10 ng/ml

Instrument :
 ECD_O
 ClientSampleId :
 OILY-DEBRIS-DRUM-2



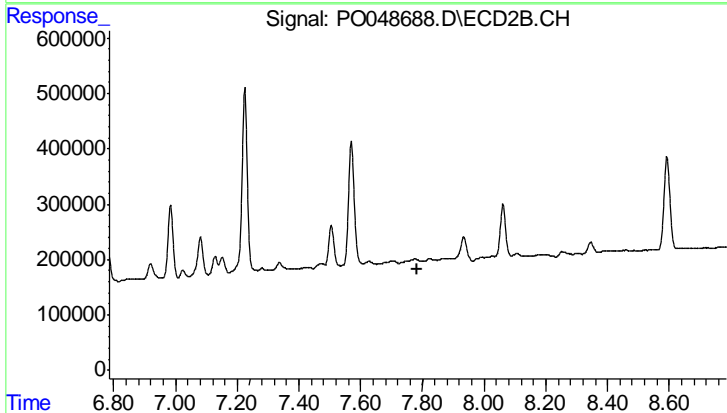
#42 AR-1268-2

R.T.: 7.569 min
 Delta R.T.: -0.011 min
 Response: 2837682
 Conc: 94.01 ng/ml



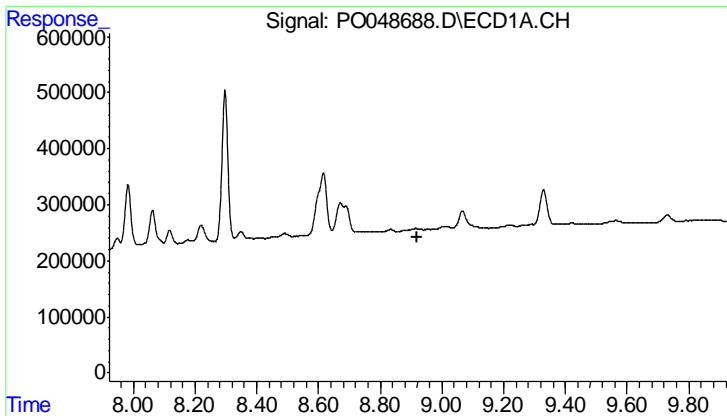
#43 AR-1268-3

R.T.: 8.617 min
 Delta R.T.: 0.008 min
 Response: 2237888
 Conc: 86.74 ng/ml



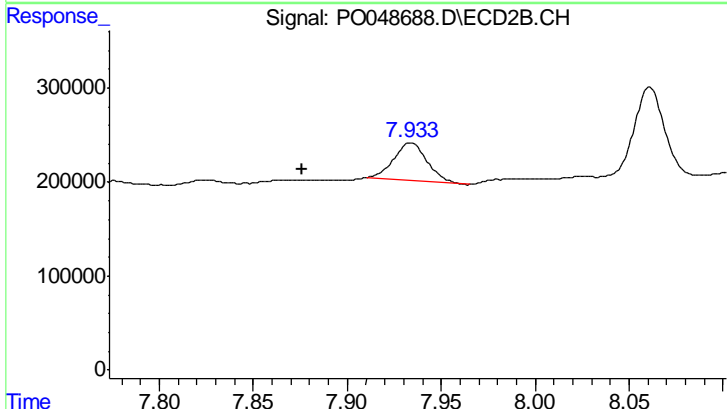
#43 AR-1268-3

R.T.: 0.000 min
 Exp R.T. : 7.785 min
 Response: 0
 Conc: N.D.

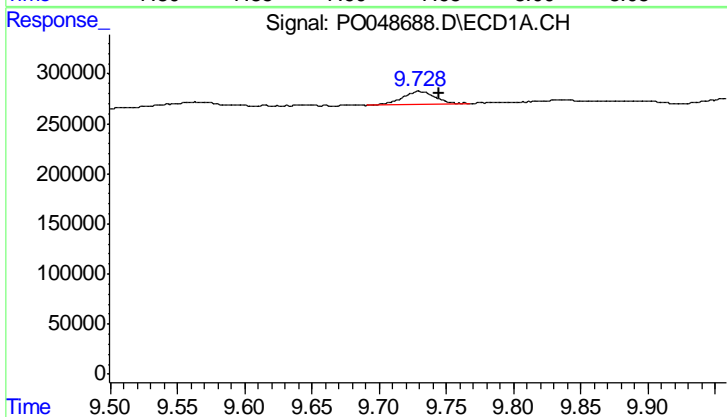


#44 AR-1268-4
 R.T.: 0.000 min
 Exp R.T.: 8.922 min
 Response: 0
 Conc: N.D.

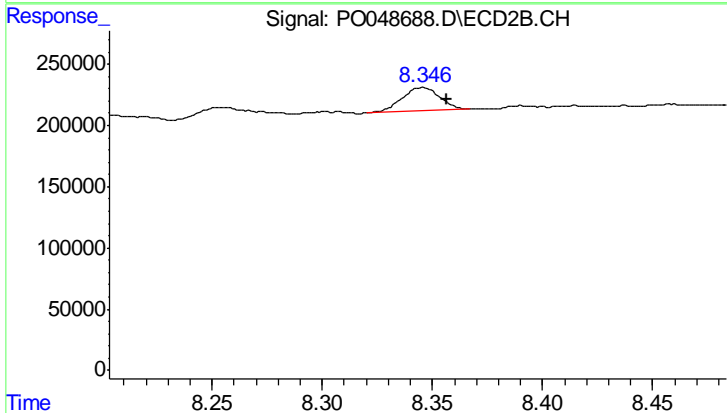
Instrument :
 ECD_O
 ClientSampleId :
 OILY-DEBRIS-DRUM-2



#44 AR-1268-4
 R.T.: 7.934 min
 Delta R.T.: 0.058 min
 Response: 500562
 Conc: 76.51 ng/ml



#45 AR-1268-5
 R.T.: 9.729 min
 Delta R.T.: -0.015 min
 Response: 226000
 Conc: 3.72 ng/ml



#45 AR-1268-5
 R.T.: 8.346 min
 Delta R.T.: -0.011 min
 Response: 232871
 Conc: 3.74 ng/ml