

Data Path : Z:\pestpcbsrv\HPCHEM1\ECD_0\Data\P0083120\
 Data File : P0071051.D
 Signal(s) : Signal #1: ECD1A.CH Signal #2: ECD2B.CH
 Acq On : 31 Aug 2020 19:46
 Operator : DD\AJ
 Sample : L3847-19
 Misc :
 ALS Vial : 30 Sample Multiplier: 1

Instrument :
 ECD_0
 ClientSampleId :
 LINDEN-JOP-BH-11-A

Integration File signal 1: autoint1.e
 Integration File signal 2: autoint2.e
 Quant Time: Sep 01 04:23:06 2020
 Quant Method : Z:\pestpcbsrv\HPCHEM1\ECD_0\methods\P0082820.M
 Quant Title : GC EXTRACTABLES
 QLast Update : Fri Aug 28 17:10:07 2020
 Response via : Initial Calibration
 Integrator: ChemStation 6890 Scale Mode: Small noise peaks clipped

Volume Inj. : 2 µl
 Signal #1 Phase : ZB-MR1 Signal #2 Phase: ZB-MR2
 Signal #1 Info : 30Mx0.32mmx 0.50µ Signal #2 Info : 30M x 0.32mm x 0.25µm

Compound	RT#1	RT#2	Resp#1	Resp#2	ng/ml	ng/ml

System Monitoring Compounds						
1) SA Tetrachlo...	4.352	3.537	1977101	1098162	25.601	24.772
2) SA Decachlor...	9.971	8.721	1778360	975691	19.435	16.987

Target Compounds

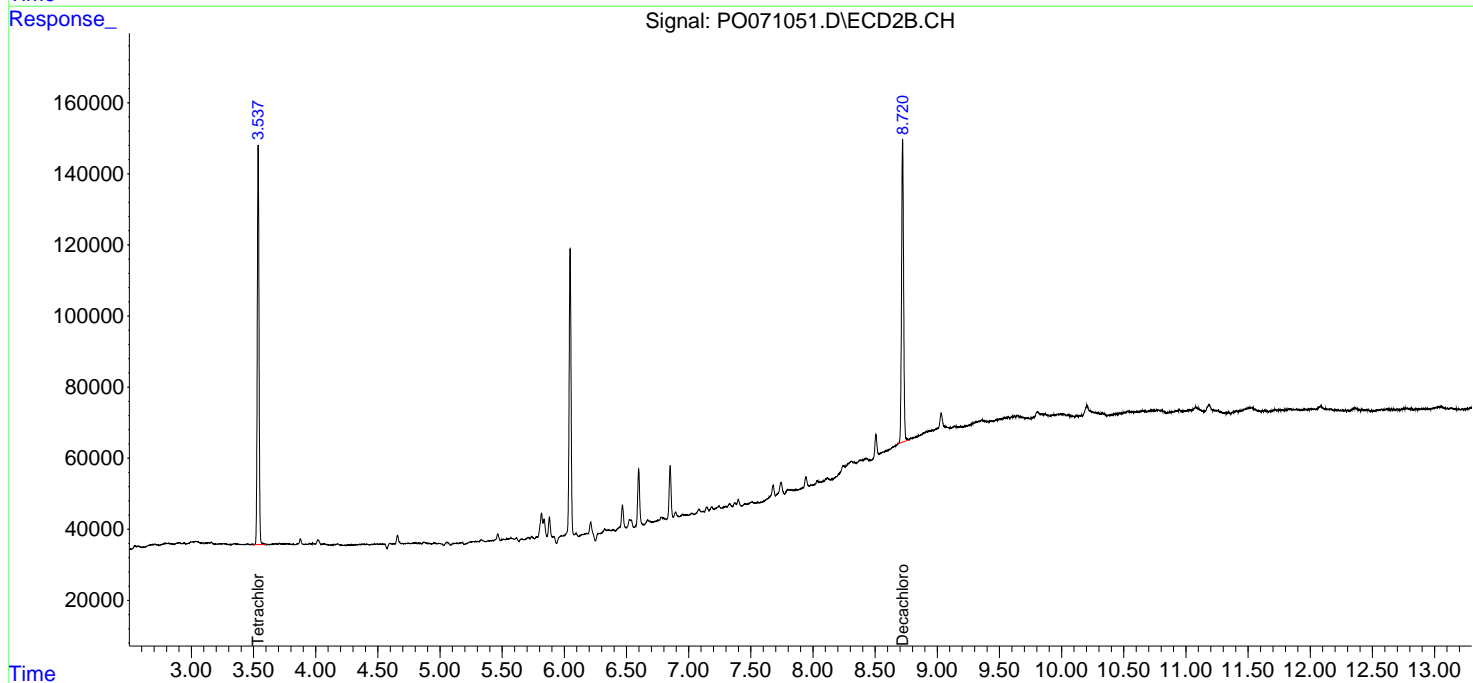
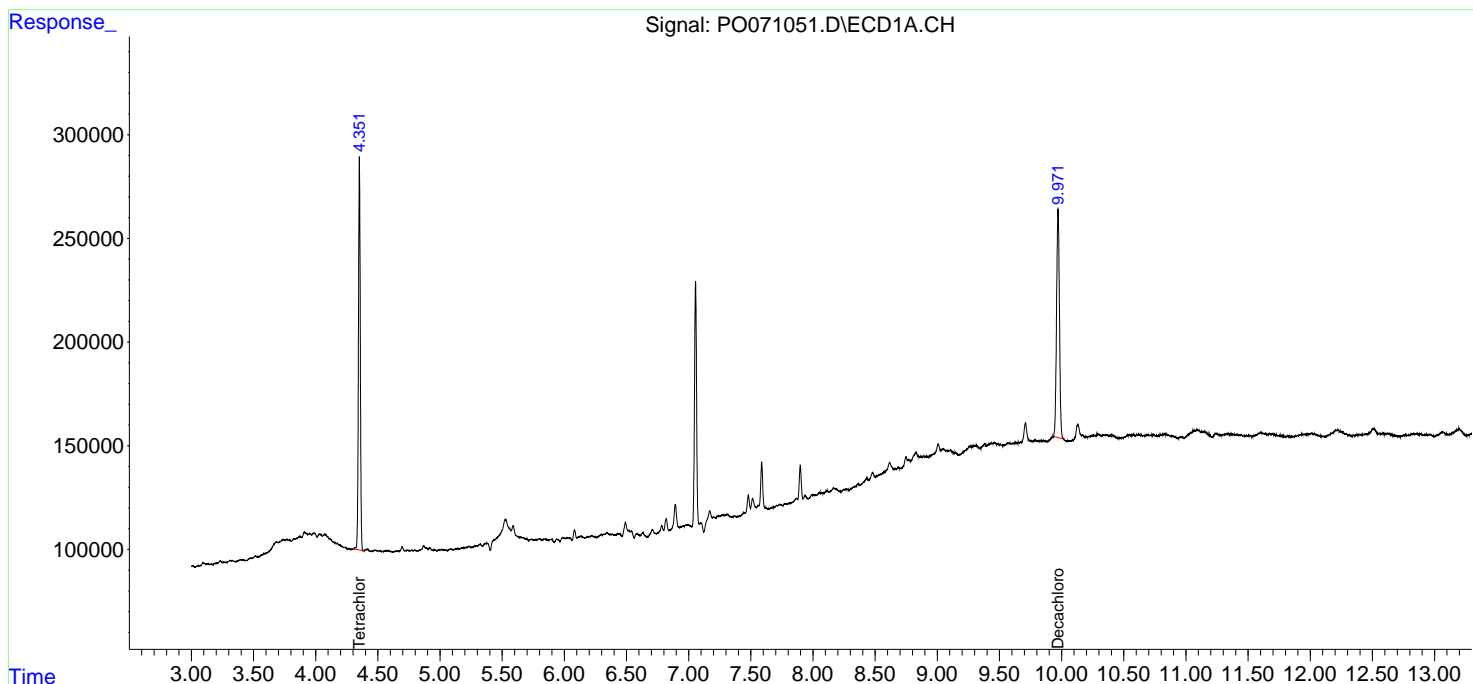
(f)=RT Delta > 1/2 Window (#)=Amounts differ by > 25% (m)=manual int.

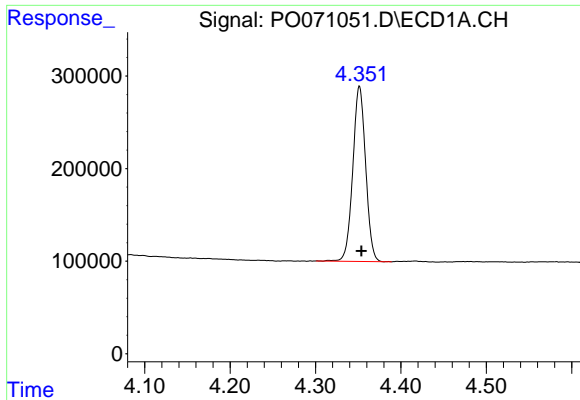
Data Path : Z:\pestpcbsrv\HPCHEM1\ECD_O\Data\P0083120\
 Data File : P0071051.D
 Signal(s) : Signal #1: ECD1A.CH Signal #2: ECD2B.CH
 Acq On : 31 Aug 2020 19:46
 Operator : DD\AJ
 Sample : L3847-19
 Misc :
 ALS Vial : 30 Sample Multiplier: 1

Instrument :
 ECD_O
ClientSampled :
 LINDEN-JOP-BH-11-A

Integration File signal 1: autoint1.e
 Integration File signal 2: autoint2.e
 Quant Time: Sep 01 04:23:06 2020
 Quant Method : Z:\pestpcbsrv\HPCHEM1\ECD_O\methods\P0082820.M
 Quant Title : GC EXTRACTABLES
 QLast Update : Fri Aug 28 17:10:07 2020
 Response via : Initial Calibration
 Integrator: ChemStation 6890 Scale Mode: Small noise peaks clipped

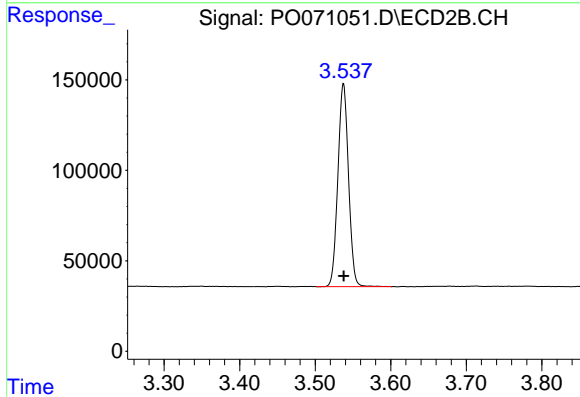
Volume Inj. : 2 µl
 Signal #1 Phase : ZB-MR1 Signal #2 Phase: ZB-MR2
 Signal #1 Info : 30Mx0.32mmx 0.50µ Signal #2 Info : 30M x 0.32mm x 0.25µm



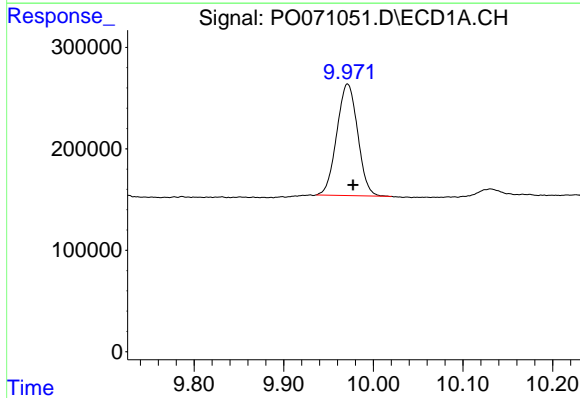


#1 Tetrachloro-m-xylene
 R.T.: 4.352 min
 Delta R.T.: -0.002 min
 Response: 1977101
 Conc: 25.60 ng/ml

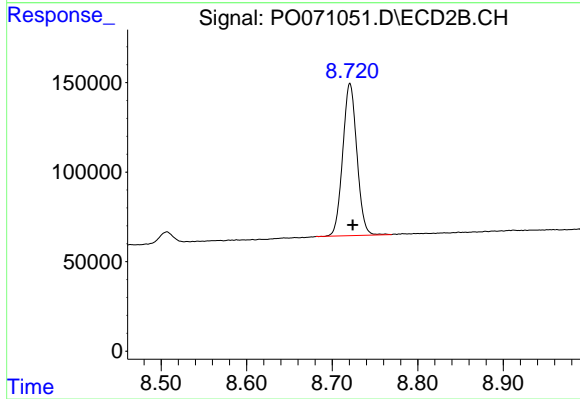
Instrument :
 ECD_O
 ClientSampleId :
 LINDEN-JOP-BH-11-A



#1 Tetrachloro-m-xylene
 R.T.: 3.537 min
 Delta R.T.: 0.000 min
 Response: 1098162
 Conc: 24.77 ng/ml



#2 Decachlorobiphenyl
 R.T.: 9.971 min
 Delta R.T.: -0.006 min
 Response: 1778360
 Conc: 19.43 ng/ml



#2 Decachlorobiphenyl
 R.T.: 8.721 min
 Delta R.T.: -0.003 min
 Response: 975691
 Conc: 16.99 ng/ml