

Data Path : Z:\pestpcbsrv\HPCHEM1\ECD_0\Data\P0083122\
 Data File : P0089166.D
 Signal(s) : Signal #1: ECD1A.ch Signal #2: ECD2B.ch
 Acq On : 31 Aug 2022 13:48
 Operator : YP/AJ
 Sample : PB147370BL
 Misc :
 ALS Vial : 7 Sample Multiplier: 1

Instrument :
 ECD_0
ClientSampleId :
 PB147370BL

Integration File signal 1: autoint1.e
 Integration File signal 2: autoint2.e
 Quant Time: Aug 31 15:14:18 2022
 Quant Method : Z:\pestpcbsrv\HPCHEM1\ECD_0\methods\P0082922.M
 Quant Title : GC EXTRACTABLES
 QLast Update : Mon Aug 29 17:48:02 2022
 Response via : Initial Calibration
 Integrator: ChemStation

Volume Inj. : 2 µl
 Signal #1 Phase : ZB-MR1 Signal #2 Phase: ZB-MR2
 Signal #1 Info : 30Mx0.32mmx 0.50µ Signal #2 Info : 30M x 0.32mm x 0.25µm

Compound	RT#1	RT#2	Resp#1	Resp#2	ng/ml	ng/ml

System Monitoring Compounds						
1) SA Tetrachlo...	4.430	3.588	71060066	19654792	18.951	20.362
2) SA Decachlor...	10.262	8.573	47142691	19979200	20.476	22.593

Target Compounds

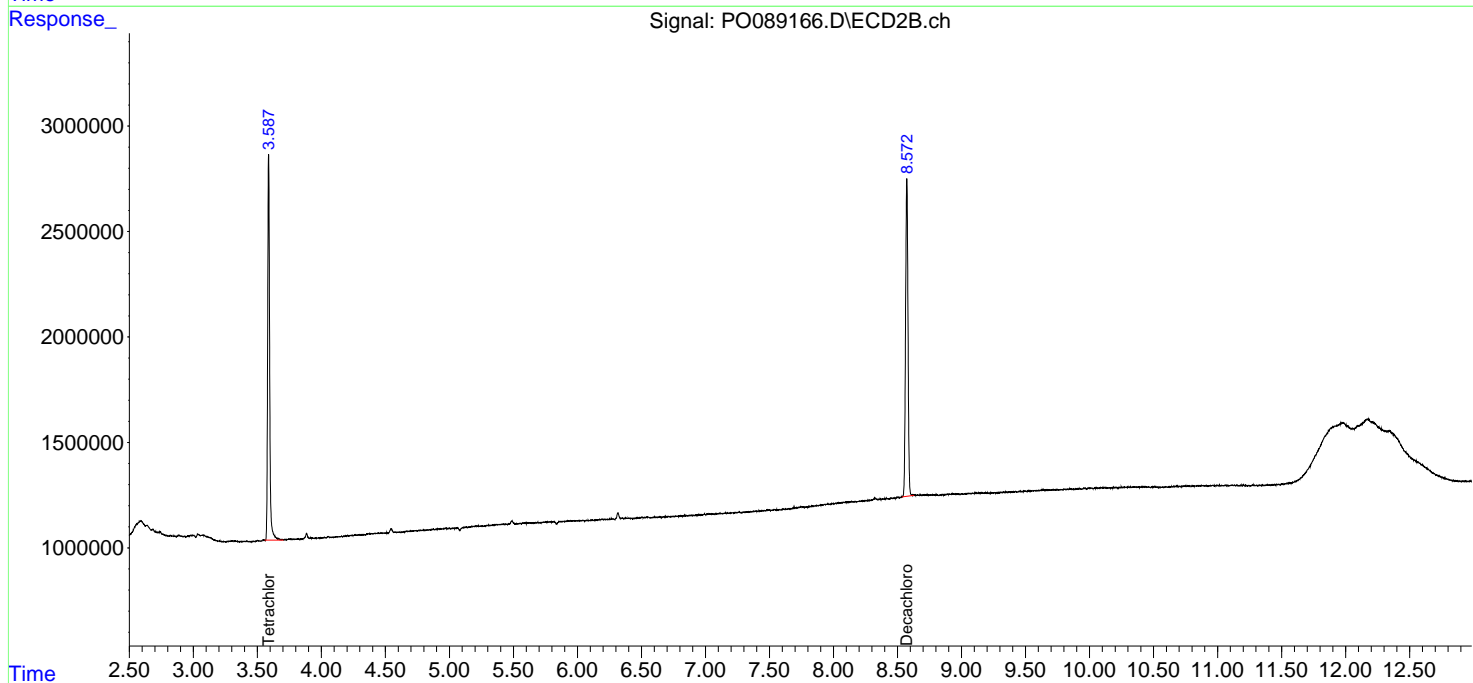
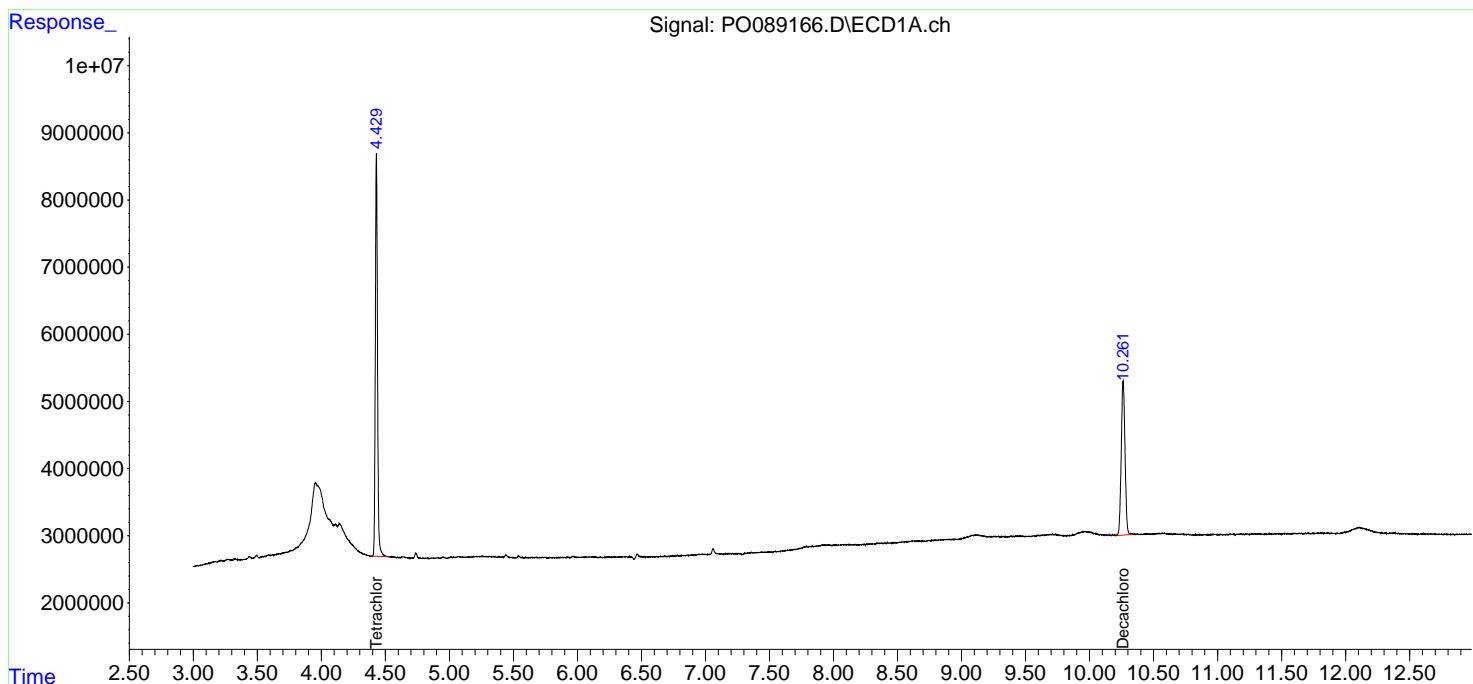
 (f)=RT Delta > 1/2 Window (#)=Amounts differ by > 25% (m)=manual int.

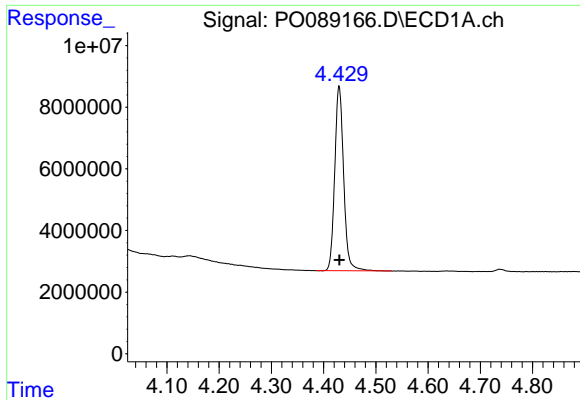
Data Path : Z:\pestpcbsrv\HPCHEM1\ECD_0\Data\PO083122\
 Data File : PO089166.D
 Signal(s) : Signal #1: ECD1A.ch Signal #2: ECD2B.ch
 Acq On : 31 Aug 2022 13:48
 Operator : YP/AJ
 Sample : PB147370BL
 Misc :
 ALS Vial : 7 Sample Multiplier: 1

Instrument :
 ECD_0
 ClientSampleId :
 PB147370BL

Integration File signal 1: autoint1.e
 Integration File signal 2: autoint2.e
 Quant Time: Aug 31 15:14:18 2022
 Quant Method : Z:\pestpcbsrv\HPCHEM1\ECD_0\methods\PO082922.M
 Quant Title : GC EXTRACTABLES
 QLast Update : Mon Aug 29 17:48:02 2022
 Response via : Initial Calibration
 Integrator: ChemStation

Volume Inj. : 2 µl
 Signal #1 Phase : ZB-MR1 Signal #2 Phase: ZB-MR2
 Signal #1 Info : 30Mx0.32mmx 0.50µ Signal #2 Info : 30M x 0.32mm x 0.25µm

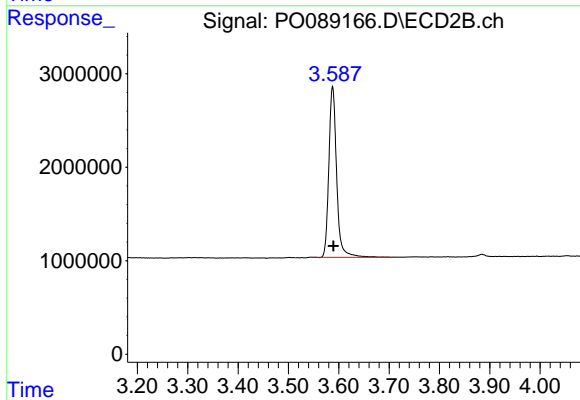




#1 Tetrachloro-m-xylene

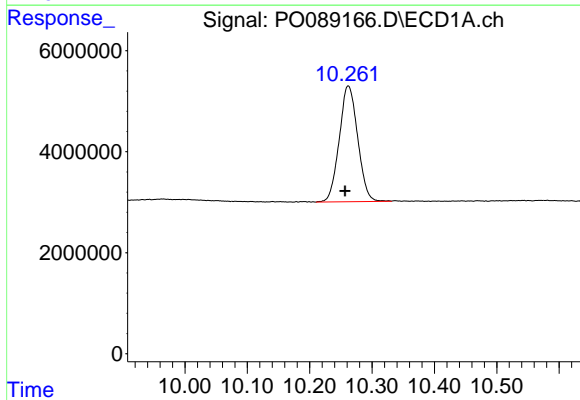
R.T.: 4.430 min
 Delta R.T.: 0.000 min
 Response: 71060066
 Conc: 18.95 ng/ml

Instrument :
 ECD_O
 ClientSampleId :
 PB147370BL



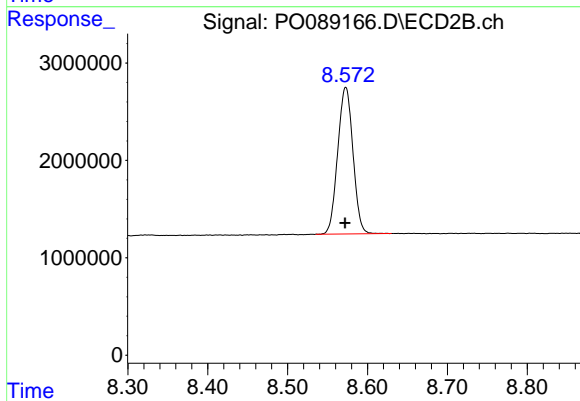
#1 Tetrachloro-m-xylene

R.T.: 3.588 min
 Delta R.T.: -0.002 min
 Response: 19654792
 Conc: 20.36 ng/ml



#2 Decachlorobiphenyl

R.T.: 10.262 min
 Delta R.T.: 0.005 min
 Response: 47142691
 Conc: 20.48 ng/ml



#2 Decachlorobiphenyl

R.T.: 8.573 min
 Delta R.T.: 0.000 min
 Response: 19979200
 Conc: 22.59 ng/ml