

Data Path : Z:\pestpcbsrv\HPCHEM1\ECD_0\Data\P0090120\
 Data File : P0071068.D
 Signal(s) : Signal #1: ECD1A.CH Signal #2: ECD2B.CH
 Acq On : 01 Sep 2020 12:57
 Operator : DD\AJ
 Sample : L3849-05
 Misc :
 ALS Vial : 8 Sample Multiplier: 1

Instrument :
 ECD_0
 ClientSampleId :
 232

Integration File signal 1: autoint1.e
 Integration File signal 2: autoint2.e
 Quant Time: Sep 01 14:30:23 2020
 Quant Method : Z:\pestpcbsrv\HPCHEM1\ECD_0\methods\P0082820.M
 Quant Title : GC EXTRACTABLES
 QLast Update : Fri Aug 28 17:10:07 2020
 Response via : Initial Calibration
 Integrator: ChemStation 6890 Scale Mode: Small noise peaks clipped

Volume Inj. : 2 µl
 Signal #1 Phase : ZB-MR1 Signal #2 Phase: ZB-MR2
 Signal #1 Info : 30Mx0.32mmx 0.50µ Signal #2 Info : 30M x 0.32mm x 0.25µm

Compound	RT#1	RT#2	Resp#1	Resp#2	ng/ml	ng/ml

System Monitoring Compounds						
1) SA Tetrachlo...	4.350	3.536	2345398	1324697	30.370	29.882
2) SA Decachlor...	9.968	8.718	2699690	1498175	29.504	26.083

Target Compounds

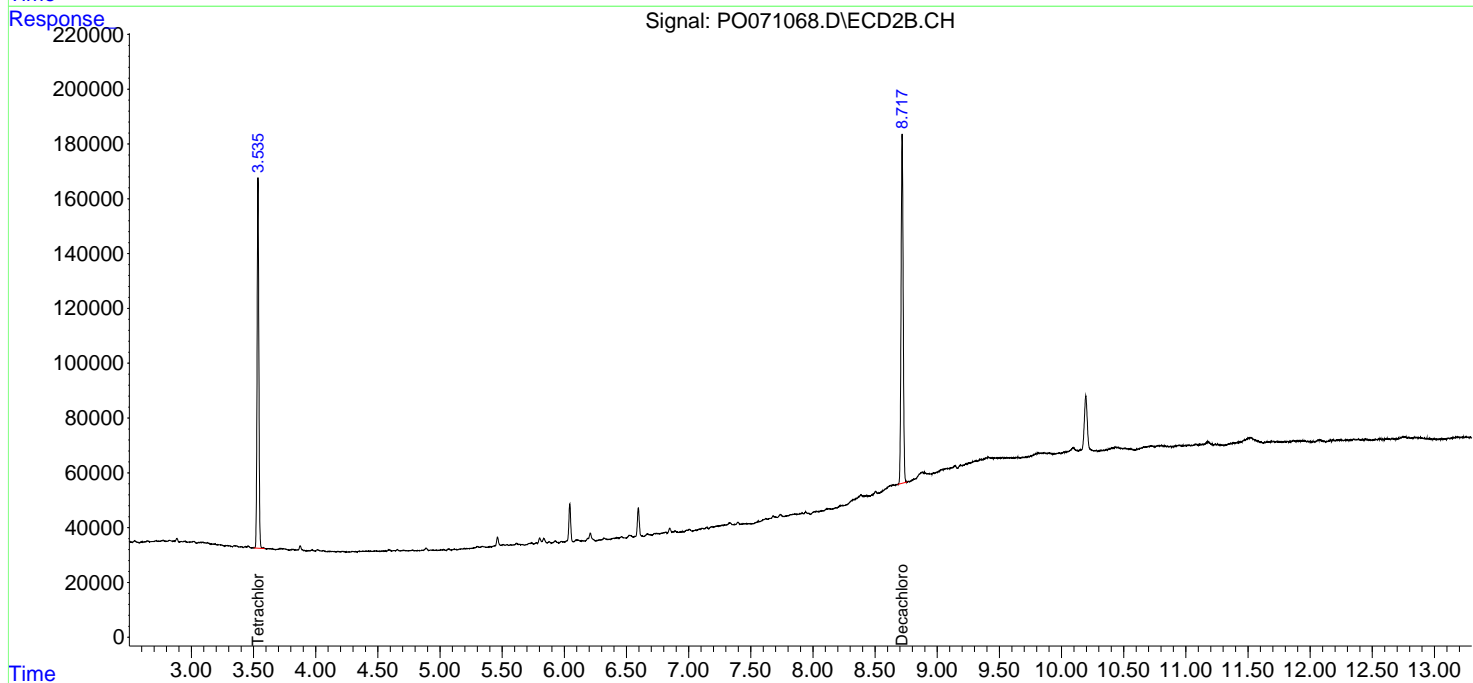
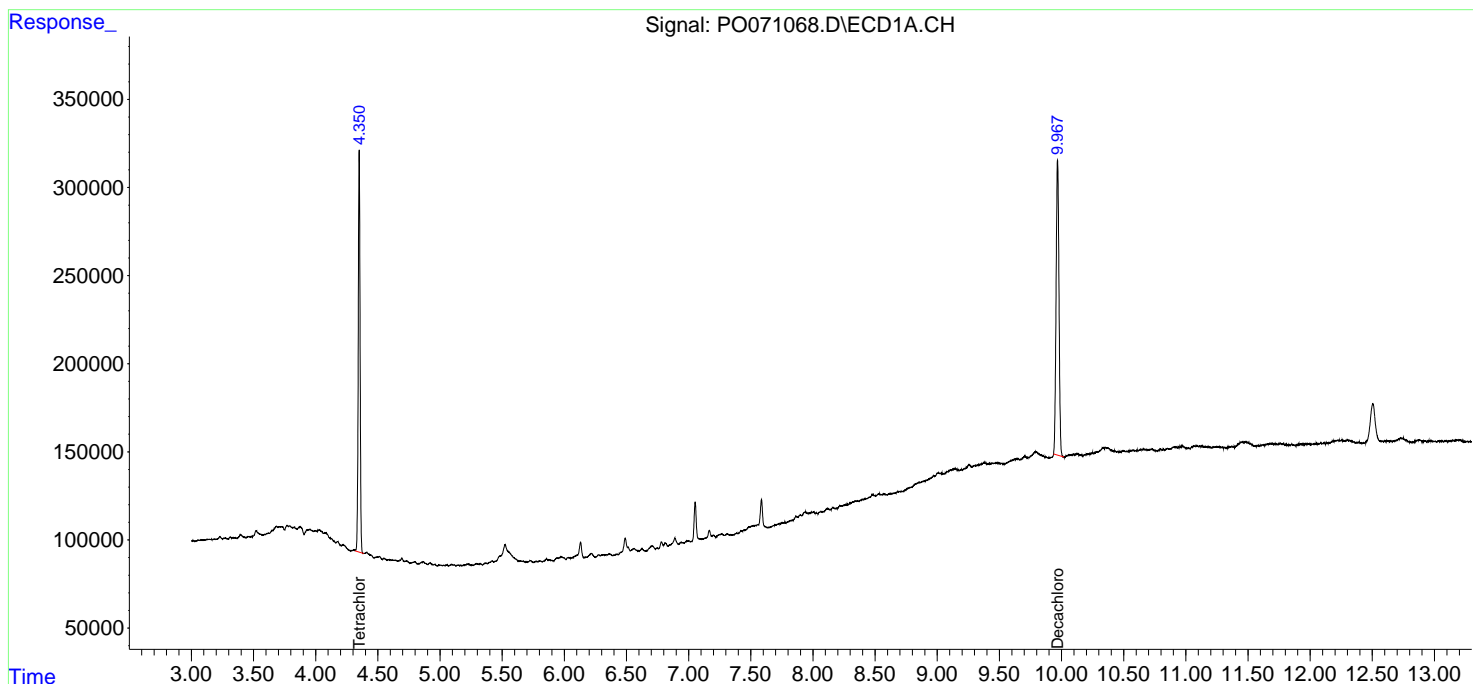
(f)=RT Delta > 1/2 Window (#)=Amounts differ by > 25% (m)=manual int.

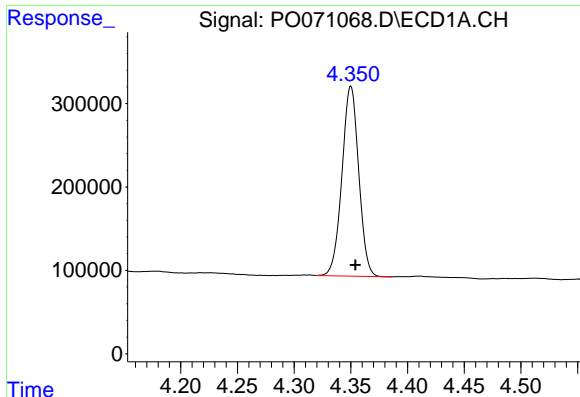
Data Path : Z:\pestpcbsrv\HPCHEM1\ECD_O\Data\P0090120\
 Data File : P0071068.D
 Signal(s) : Signal #1: ECD1A.CH Signal #2: ECD2B.CH
 Acq On : 01 Sep 2020 12:57
 Operator : DD\AJ
 Sample : L3849-05
 Misc :
 ALS Vial : 8 Sample Multiplier: 1

Instrument :
 ECD_O
 ClientSampled :
 232

Integration File signal 1: autoint1.e
 Integration File signal 2: autoint2.e
 Quant Time: Sep 01 14:30:23 2020
 Quant Method : Z:\pestpcbsrv\HPCHEM1\ECD_O\methods\P0082820.M
 Quant Title : GC EXTRACTABLES
 QLast Update : Fri Aug 28 17:10:07 2020
 Response via : Initial Calibration
 Integrator: ChemStation 6890 Scale Mode: Small noise peaks clipped

Volume Inj. : 2 µl
 Signal #1 Phase : ZB-MR1 Signal #2 Phase: ZB-MR2
 Signal #1 Info : 30Mx0.32mmx 0.50µ Signal #2 Info : 30M x 0.32mm x 0.25µm

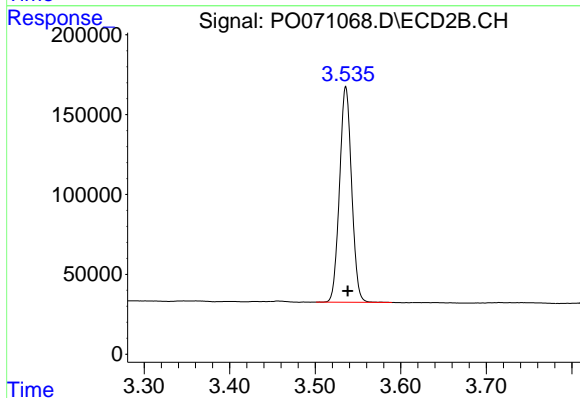




#1 Tetrachloro-m-xylene

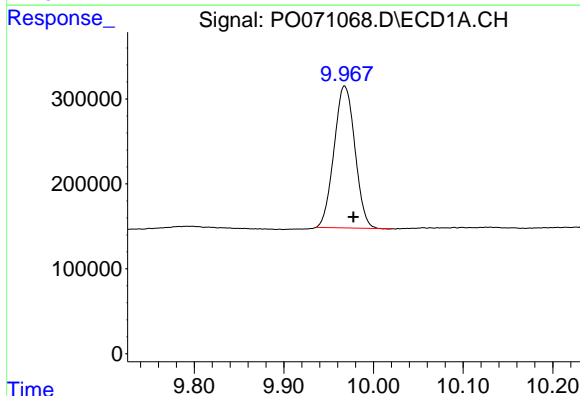
R.T.: 4.350 min
 Delta R.T.: -0.004 min
 Response: 2345398
 Conc: 30.37 ng/ml

Instrument :
 ECD_O
 ClientSampled :
 232



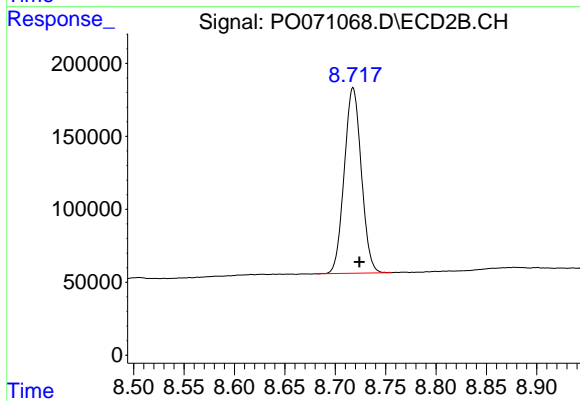
#1 Tetrachloro-m-xylene

R.T.: 3.536 min
 Delta R.T.: -0.002 min
 Response: 1324697
 Conc: 29.88 ng/ml



#2 Decachlorobiphenyl

R.T.: 9.968 min
 Delta R.T.: -0.009 min
 Response: 2699690
 Conc: 29.50 ng/ml



#2 Decachlorobiphenyl

R.T.: 8.718 min
 Delta R.T.: -0.006 min
 Response: 1498175
 Conc: 26.08 ng/ml