

Data Path : Z:\pestpcbsrv\HPCHEM1\ECD_0\Data\P0090222\
 Data File : P0089224.D
 Signal(s) : Signal #1: ECD1A.ch Signal #2: ECD2B.ch
 Acq On : 02 Sep 2022 16:35
 Operator : YP/AJ
 Sample : AR1248CCC500
 Misc :
 ALS Vial : 5 Sample Multiplier: 1

Instrument :
 ECD_0
 ClientSampleId :
 AR1248CCC500

Integration File signal 1: autoint1.e
 Integration File signal 2: autoint2.e
 Quant Time: Sep 02 18:07:12 2022
 Quant Method : Z:\pestpcbsrv\HPCHEM1\ECD_0\methods\P0082922.M
 Quant Title : GC EXTRACTABLES
 QLast Update : Mon Aug 29 17:48:02 2022
 Response via : Initial Calibration
 Integrator: ChemStation

Volume Inj. : 2 µl
 Signal #1 Phase : ZB-MR1 Signal #2 Phase: ZB-MR2
 Signal #1 Info : 30Mx0.32mmx 0.50µ Signal #2 Info : 30M x 0.32mm x 0.25µm

Compound	RT#1	RT#2	Resp#1	Resp#2	ng/ml	ng/ml

System Monitoring Compounds						
1) SA Tetrachlo...	4.430	3.587	173.1E6	49183472	46.171	50.953
2) SA Decachlor...	10.255	8.568	103.3E6	47178104	44.861	53.351
Target Compounds						
21) L5 AR-1248-1	5.604	4.662	31642293	10606857	459.492	472.269
22) L5 AR-1248-2	5.880	4.897	45743359	14777602	463.489	451.789
23) L5 AR-1248-3	6.085	4.938	46603627	15691452	444.835	460.295
24) L5 AR-1248-4	6.490	5.109	52015862	17825461	452.099	437.326
25) L5 AR-1248-5	6.530	5.500	50125351	18211599	442.865	458.284

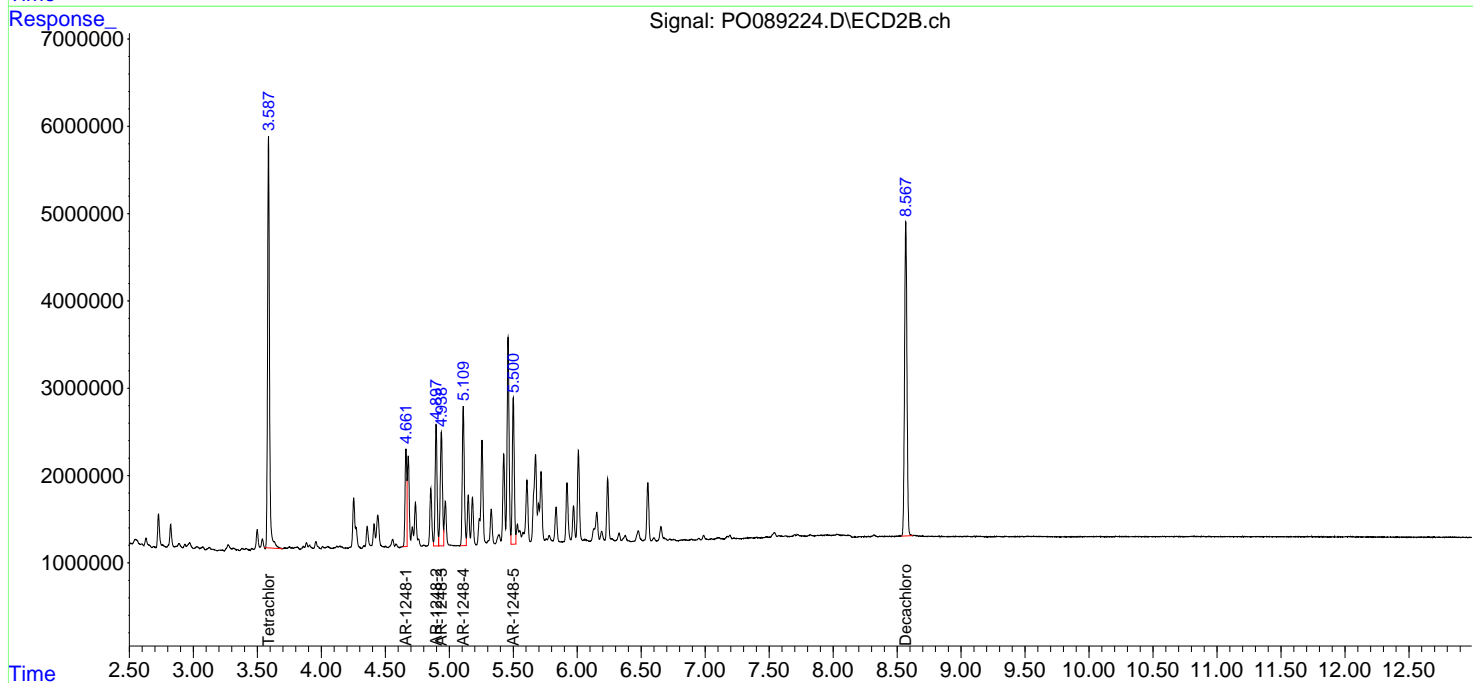
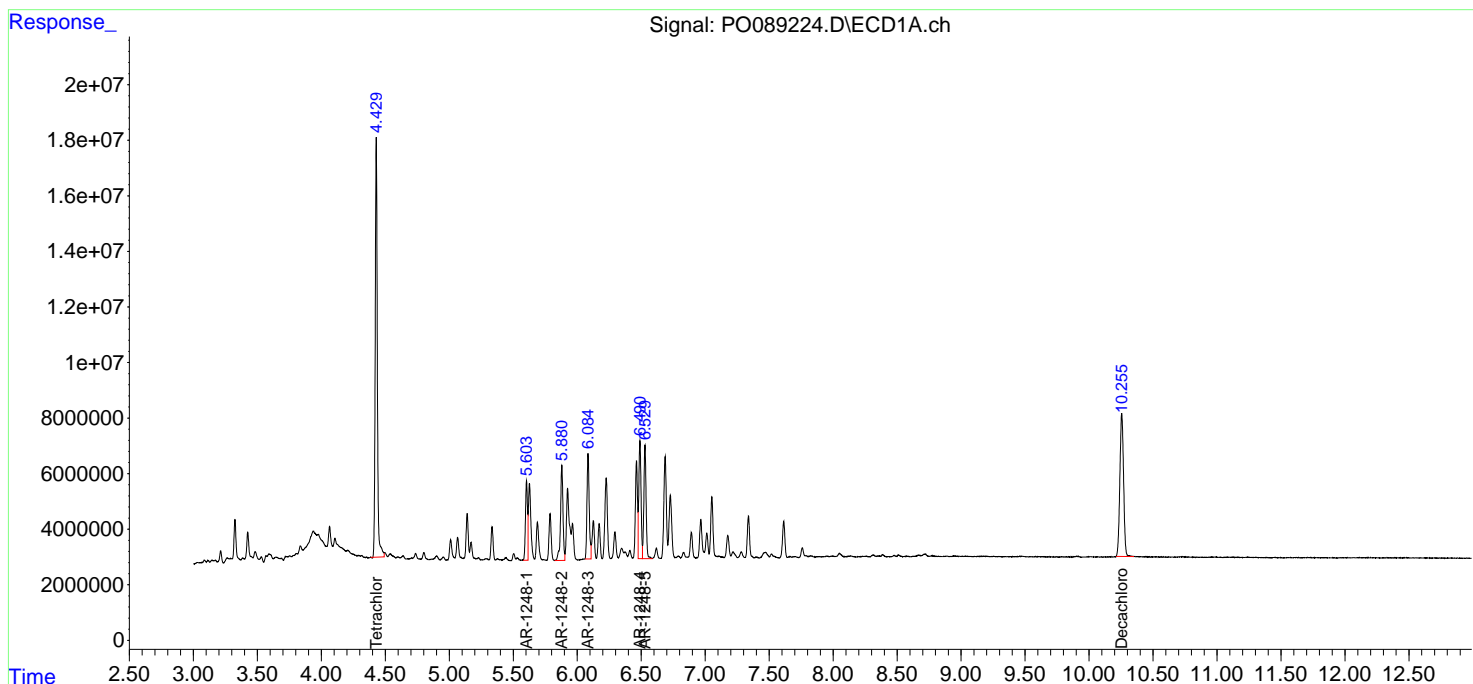
(f)=RT Delta > 1/2 Window (#)=Amounts differ by > 25% (m)=manual int.

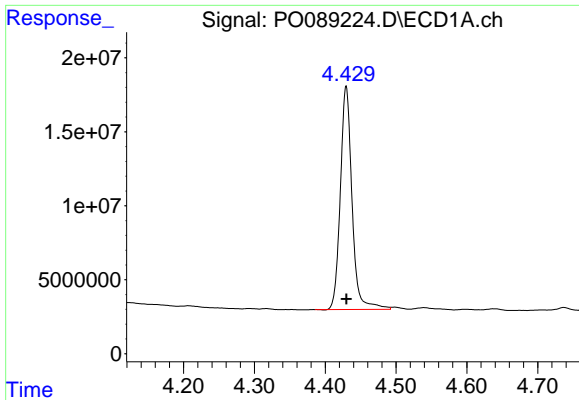
Data Path : Z:\pestpcbsrv\HPCHEM1\ECD_O\Data\PO090222\
 Data File : PO089224.D
 Signal(s) : Signal #1: ECD1A.ch Signal #2: ECD2B.ch
 Acq On : 02 Sep 2022 16:35
 Operator : YP/AJ
 Sample : AR1248CCC500
 Misc :
 ALS Vial : 5 Sample Multiplier: 1

Instrument :
 ECD_O
 ClientSampleId :
 AR1248CCC500

Integration File signal 1: autoint1.e
 Integration File signal 2: autoint2.e
 Quant Time: Sep 02 18:07:12 2022
 Quant Method : Z:\pestpcbsrv\HPCHEM1\ECD_O\methods\PO082922.M
 Quant Title : GC EXTRACTABLES
 QLast Update : Mon Aug 29 17:48:02 2022
 Response via : Initial Calibration
 Integrator: ChemStation

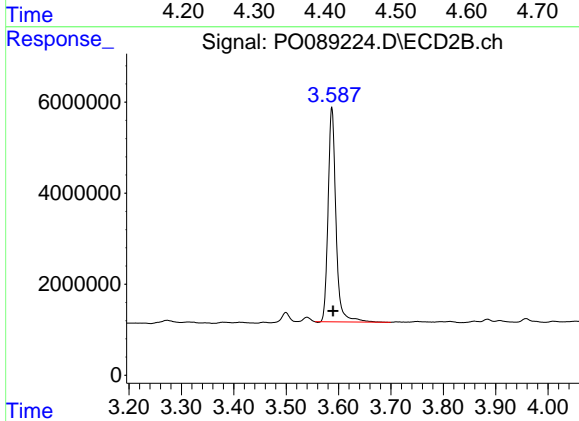
Volume Inj. : 2 µl
 Signal #1 Phase : ZB-MR1 Signal #2 Phase: ZB-MR2
 Signal #1 Info : 30Mx0.32mmx 0.50µ Signal #2 Info : 30M x 0.32mm x 0.25µm



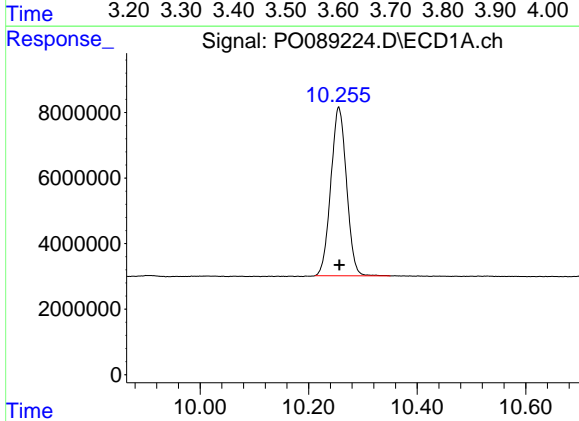


#1 Tetrachloro-m-xylene
 R.T.: 4.430 min
 Delta R.T.: 0.000 min
 Response: 173125400
 Conc: 46.17 ng/ml

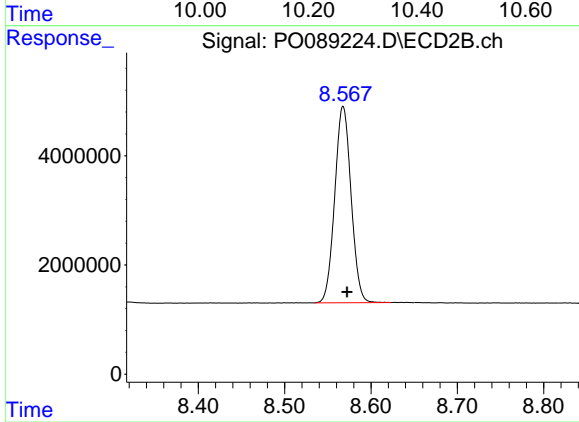
Instrument :
 ECD_O
 ClientSampleId :
 AR1248CCC500



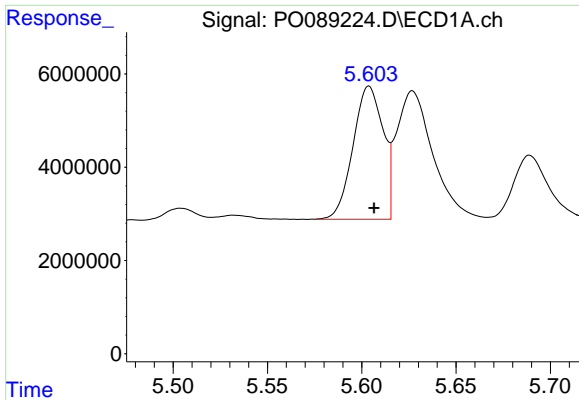
#1 Tetrachloro-m-xylene
 R.T.: 3.587 min
 Delta R.T.: -0.002 min
 Response: 49183472
 Conc: 50.95 ng/ml



#2 Decachlorobiphenyl
 R.T.: 10.255 min
 Delta R.T.: -0.001 min
 Response: 103283504
 Conc: 44.86 ng/ml



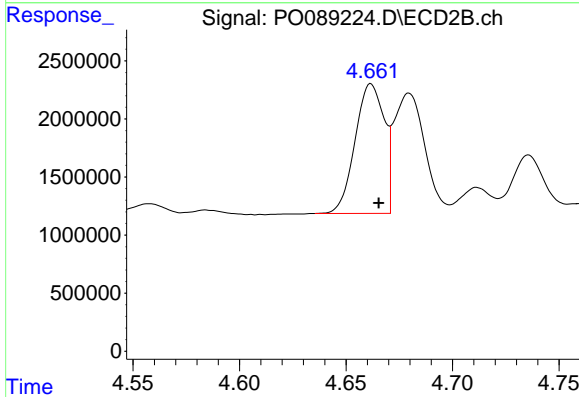
#2 Decachlorobiphenyl
 R.T.: 8.568 min
 Delta R.T.: -0.004 min
 Response: 47178104
 Conc: 53.35 ng/ml



#21 AR-1248-1

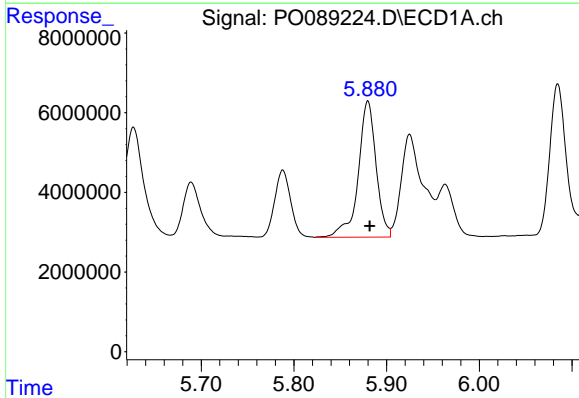
R.T.: 5.604 min
 Delta R.T.: -0.003 min
 Response: 31642293
 Conc: 459.49 ng/ml

Instrument :
 ECD_O
 ClientSampleId :
 AR1248CCC500



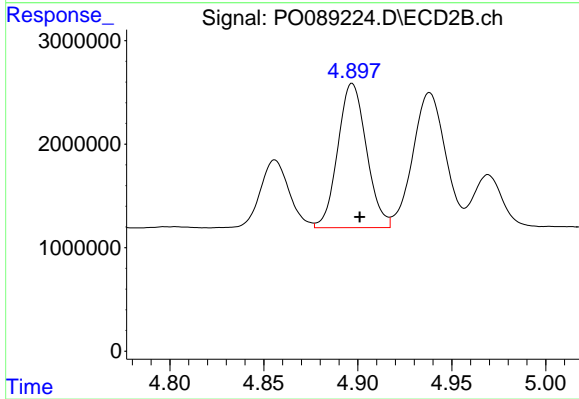
#21 AR-1248-1

R.T.: 4.662 min
 Delta R.T.: -0.004 min
 Response: 10606857
 Conc: 472.27 ng/ml



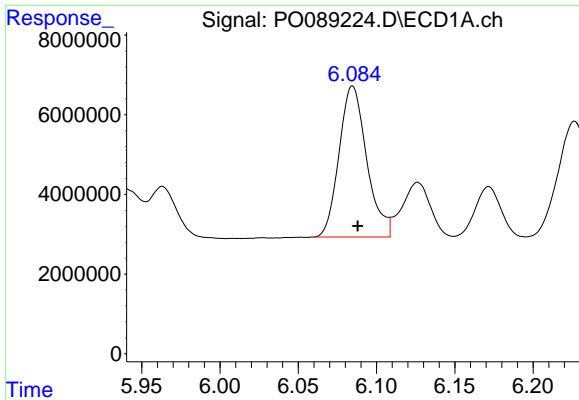
#22 AR-1248-2

R.T.: 5.880 min
 Delta R.T.: -0.002 min
 Response: 45743359
 Conc: 463.49 ng/ml



#22 AR-1248-2

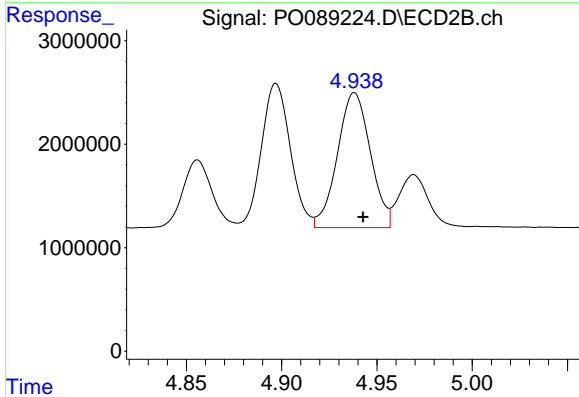
R.T.: 4.897 min
 Delta R.T.: -0.004 min
 Response: 14777602
 Conc: 451.79 ng/ml



#23 AR-1248-3

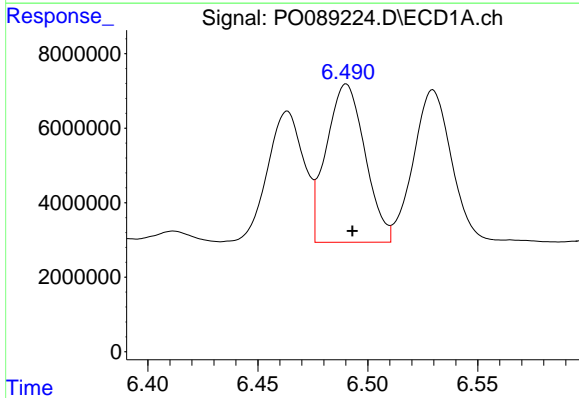
R.T.: 6.085 min
 Delta R.T.: -0.003 min
 Response: 46603627
 Conc: 444.83 ng/ml

Instrument :
 ECD_O
 ClientSampleId :
 AR1248CCC500



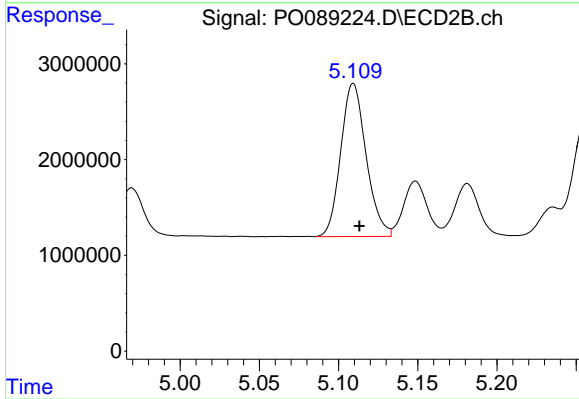
#23 AR-1248-3

R.T.: 4.938 min
 Delta R.T.: -0.005 min
 Response: 15691452
 Conc: 460.30 ng/ml



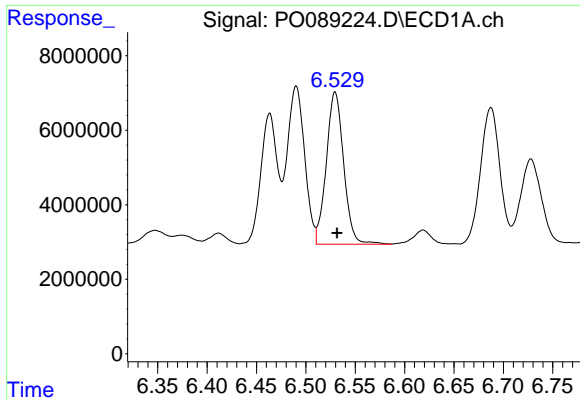
#24 AR-1248-4

R.T.: 6.490 min
 Delta R.T.: -0.003 min
 Response: 52015862
 Conc: 452.10 ng/ml



#24 AR-1248-4

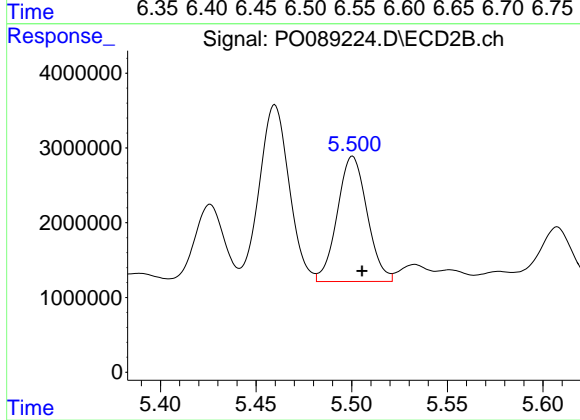
R.T.: 5.109 min
 Delta R.T.: -0.004 min
 Response: 17825461
 Conc: 437.33 ng/ml



#25 AR-1248-5

R.T.: 6.530 min
Delta R.T.: -0.002 min
Response: 50125351
Conc: 442.86 ng/ml

Instrument :
ECD_O
ClientSampleId :
AR1248CCC500



#25 AR-1248-5

R.T.: 5.500 min
Delta R.T.: -0.005 min
Response: 18211599
Conc: 458.28 ng/ml