

Data Path : Z:\pestpcbsrv\HPCHEM1\ECD_0\Data\P0090222\
 Data File : P0089230.D
 Signal(s) : Signal #1: ECD1A.ch Signal #2: ECD2B.ch
 Acq On : 02 Sep 2022 18:19
 Operator : YP/AJ
 Sample : PB147436BL
 Misc :
 ALS Vial : 20 Sample Multiplier: 1

Instrument :
 ECD_0
 ClientSampleId :
 PB147436BL

Integration File signal 1: autoint1.e
 Integration File signal 2: autoint2.e
 Quant Time: Sep 02 18:42:39 2022
 Quant Method : Z:\pestpcbsrv\HPCHEM1\ECD_0\methods\P0082922.M
 Quant Title : GC EXTRACTABLES
 QLast Update : Mon Aug 29 17:48:02 2022
 Response via : Initial Calibration
 Integrator: ChemStation

Volume Inj. : 2 µl
 Signal #1 Phase : ZB-MR1 Signal #2 Phase: ZB-MR2
 Signal #1 Info : 30Mx0.32mmx 0.50µ Signal #2 Info : 30M x 0.32mm x 0.25µm

| Compound | RT#1 | RT#2 | Resp#1 | Resp#2 | ng/ml | ng/ml |
|-----------------------------|--------|-------|----------|----------|--------|--------|
| ----- | | | | | | |
| System Monitoring Compounds | | | | | | |
| 1) SA Tetrachlo... | 4.428 | 3.587 | 70566041 | 20035361 | 18.819 | 20.756 |
| 2) SA Decachlor... | 10.255 | 8.567 | 44096050 | 20284874 | 19.153 | 22.939 |

Target Compounds

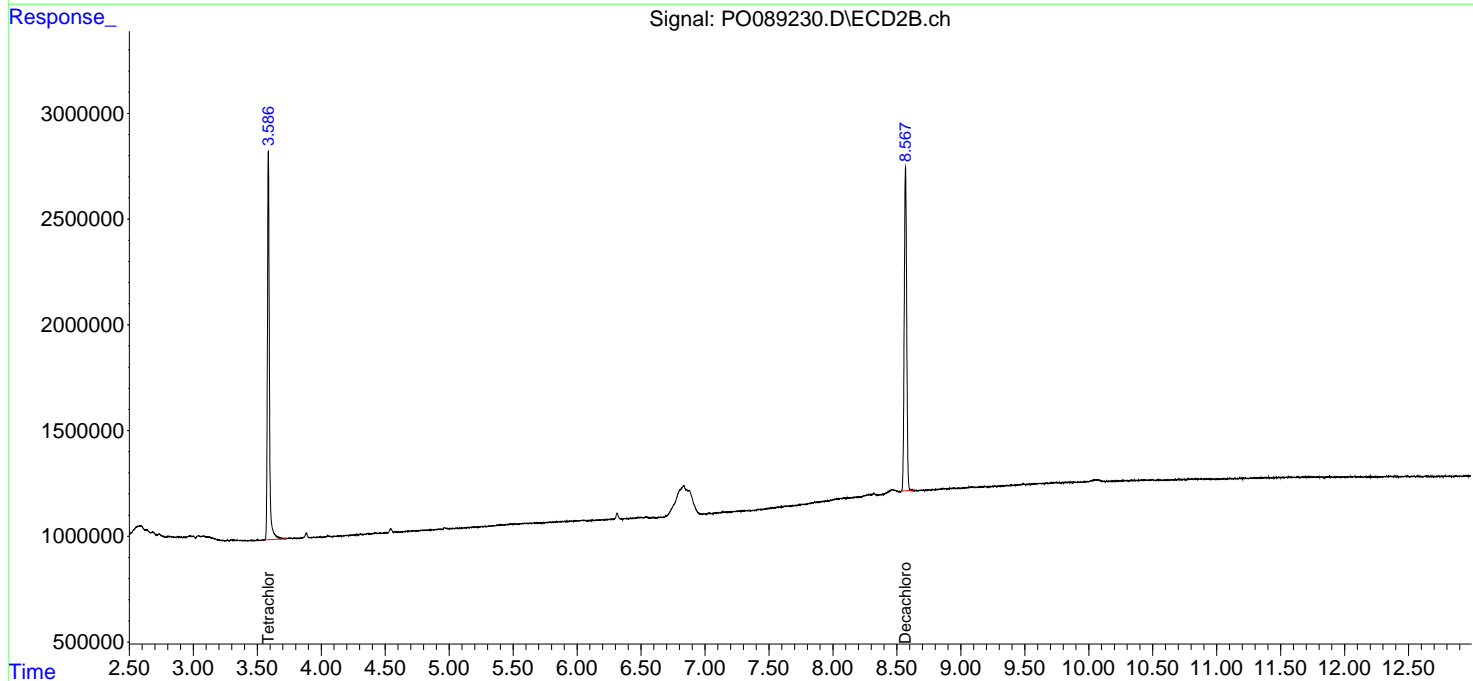
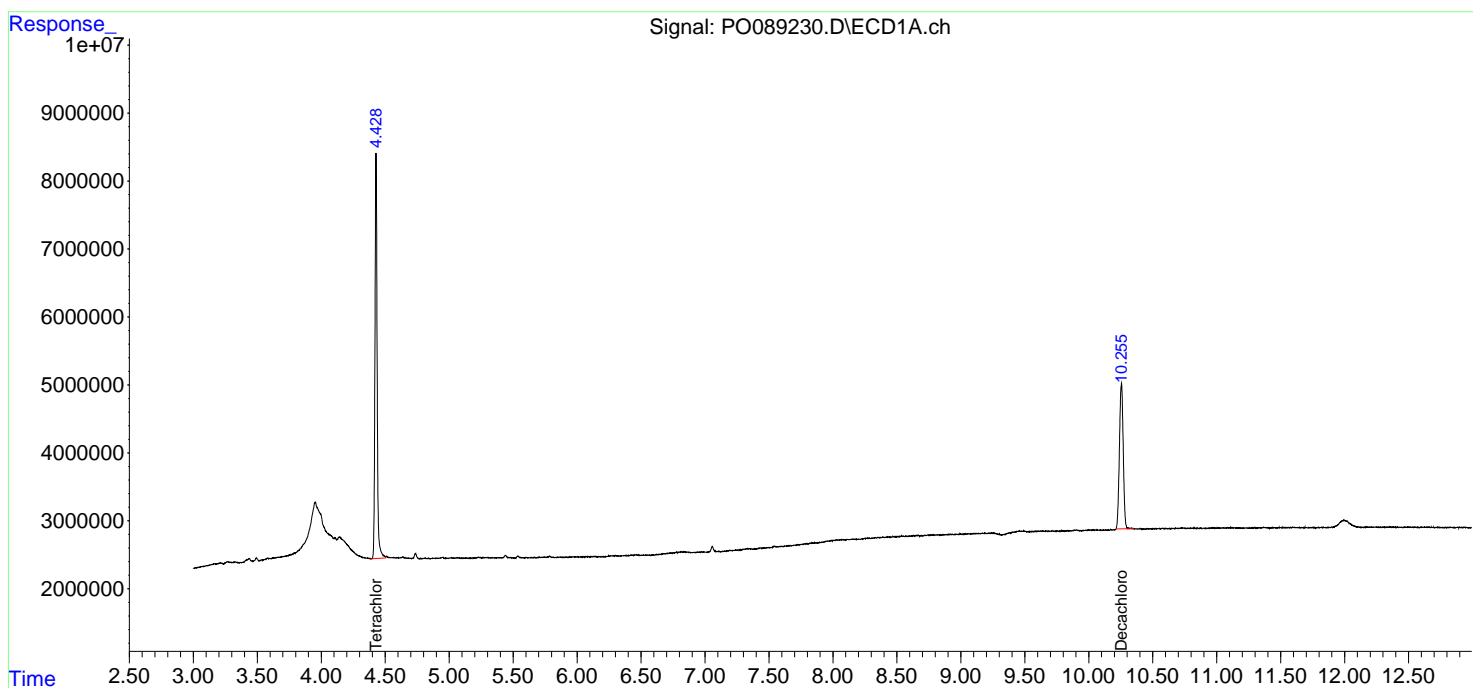
(f)=RT Delta > 1/2 Window (#)=Amounts differ by > 25% (m)=manual int.

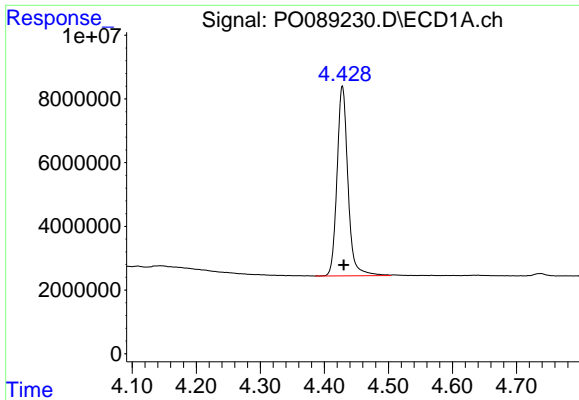
Data Path : Z:\pestpcbsrv\HPCHEM1\ECD_O\Data\PO090222\
 Data File : PO089230.D
 Signal(s) : Signal #1: ECD1A.ch Signal #2: ECD2B.ch
 Acq On : 02 Sep 2022 18:19
 Operator : YP/AJ
 Sample : PB147436BL
 Misc :
 ALS Vial : 20 Sample Multiplier: 1

Instrument :
 ECD_O
ClientSampleId :
 PB147436BL

Integration File signal 1: autoint1.e
 Integration File signal 2: autoint2.e
 Quant Time: Sep 02 18:42:39 2022
 Quant Method : Z:\pestpcbsrv\HPCHEM1\ECD_O\methods\PO082922.M
 Quant Title : GC EXTRACTABLES
 QLast Update : Mon Aug 29 17:48:02 2022
 Response via : Initial Calibration
 Integrator: ChemStation

Volume Inj. : 2 µl
 Signal #1 Phase : ZB-MR1 Signal #2 Phase: ZB-MR2
 Signal #1 Info : 30Mx0.32mmx 0.50µ Signal #2 Info : 30M x 0.32mm x 0.25µm

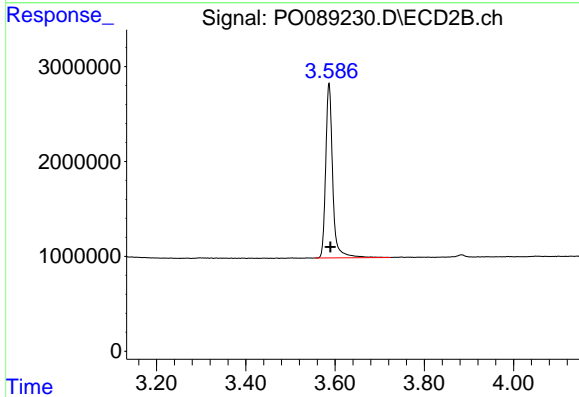




#1 Tetrachloro-m-xylene

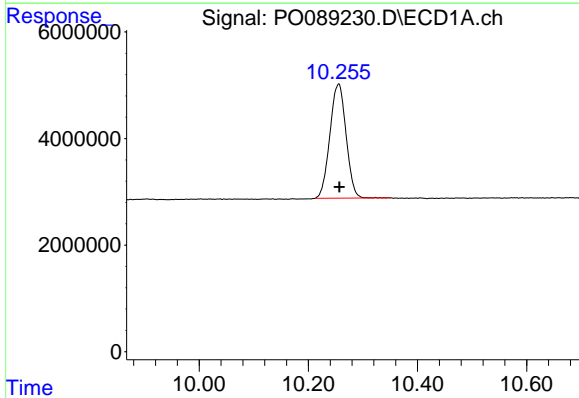
R.T.: 4.428 min
 Delta R.T.: -0.002 min
 Response: 70566041
 Conc: 18.82 ng/ml

Instrument :
 ECD_O
 ClientSampleId :
 PB147436BL



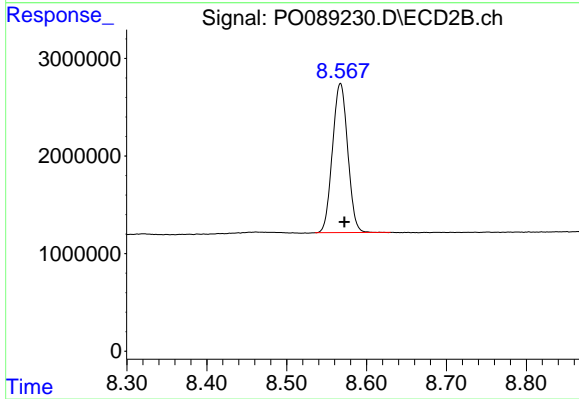
#1 Tetrachloro-m-xylene

R.T.: 3.587 min
 Delta R.T.: -0.003 min
 Response: 20035361
 Conc: 20.76 ng/ml



#2 Decachlorobiphenyl

R.T.: 10.255 min
 Delta R.T.: -0.002 min
 Response: 44096050
 Conc: 19.15 ng/ml



#2 Decachlorobiphenyl

R.T.: 8.567 min
 Delta R.T.: -0.005 min
 Response: 20284874
 Conc: 22.94 ng/ml