

Data Path : Z:\pestpcbsrv\HPCHEM1\ECD_0\Data\P0090222\
 Data File : P0089231.D
 Signal(s) : Signal #1: ECD1A.ch Signal #2: ECD2B.ch
 Acq On : 02 Sep 2022 18:36
 Operator : YP/AJ
 Sample : PB147436BS
 Misc :
 ALS Vial : 21 Sample Multiplier: 1

Instrument :
 ECD_0
ClientSampleId :
 PB147436BS

Manual Integrations
APPROVED
 Reviewed By :Yogesh Patel 09/06/2022
 Supervised By :Ankita Jodhani 09/06/2022

Integration File signal 1: autoint1.e
 Integration File signal 2: autoint2.e
 Quant Time: Sep 03 04:24:29 2022
 Quant Method : Z:\pestpcbsrv\HPCHEM1\ECD_0\methods\P0082922.M
 Quant Title : GC EXTRACTABLES
 QLast Update : Mon Aug 29 17:48:02 2022
 Response via : Initial Calibration
 Integrator: ChemStation

Volume Inj. : 2 µl
 Signal #1 Phase : ZB-MR1 Signal #2 Phase: ZB-MR2
 Signal #1 Info : 30Mx0.32mmx 0.50µ Signal #2 Info : 30M x 0.32mm x 0.25µm

Compound	RT#1	RT#2	Resp#1	Resp#2	ng/ml	ng/ml

System Monitoring Compounds						
1) SA Tetrachlo...	4.428	3.586	78357926	20561914	20.897	21.302
2) SA Decachlor...	10.254	8.567	46003516	20929609	19.981	23.668
Target Compounds						
3) L1 AR-1016-1	5.603	4.661	52644738	16989736	468.220	470.458
4) L1 AR-1016-2	5.625	4.679	73714977	23432659	467.739	474.640
5) L1 AR-1016-3	5.688	4.854	45739689	12694854	468.991	477.301
6) L1 AR-1016-4	5.788	4.896	37083085	10404366	471.276	483.401
7) L1 AR-1016-5	6.083	5.108	36196880	13130070	471.660m	450.002
31) L7 AR-1260-1	7.215	6.138	58604276	25238354	435.217	449.855
32) L7 AR-1260-2	7.473	6.327	66902310	29692531	438.377	436.963
33) L7 AR-1260-3	7.834	6.479	42994990	27155080	384.773	442.598
34) L7 AR-1260-4	8.061	6.950	50742527	19811893	411.040	393.153
35) L7 AR-1260-5	8.388	7.193	91568198	46800307	383.840	409.037

(f)=RT Delta > 1/2 Window (#)=Amounts differ by > 25% (m)=manual int.

Data Path : Z:\pestpcbsrv\HPCHEM1\ECD_O\Data\PO090222\
 Data File : PO089231.D
 Signal(s) : Signal #1: ECD1A.ch Signal #2: ECD2B.ch
 Acq On : 02 Sep 2022 18:36
 Operator : YP/AJ
 Sample : PB147436BS
 Misc :
 ALS Vial : 21 Sample Multiplier: 1

Instrument :

ECD_O

ClientSampleId :

PB147436BS

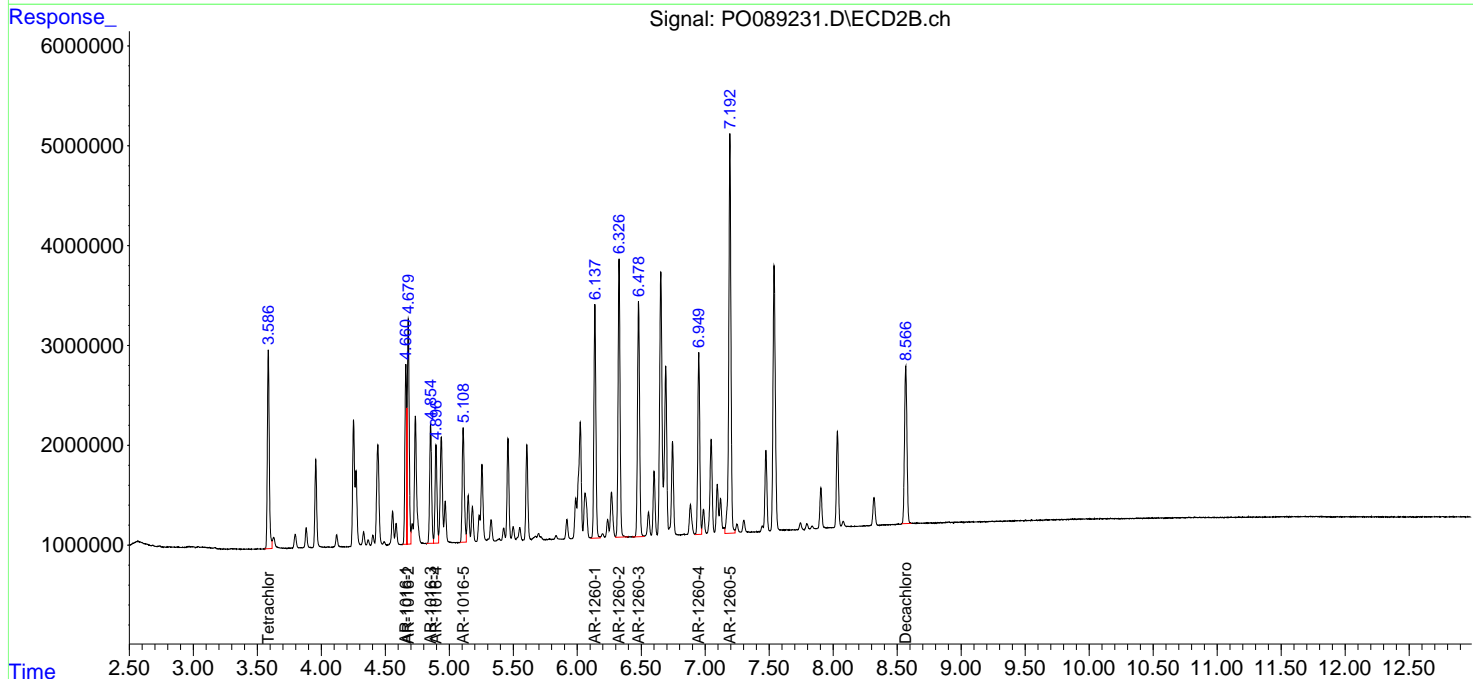
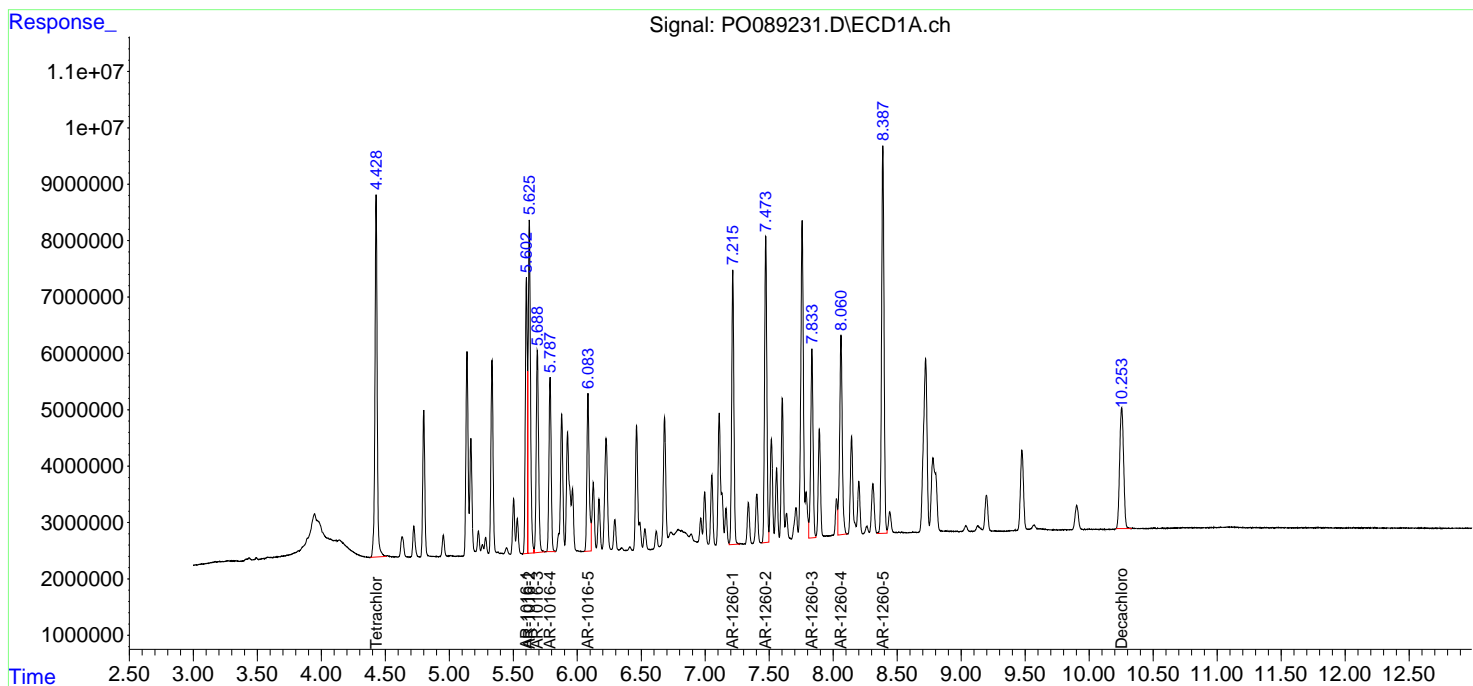
Manual Integrations

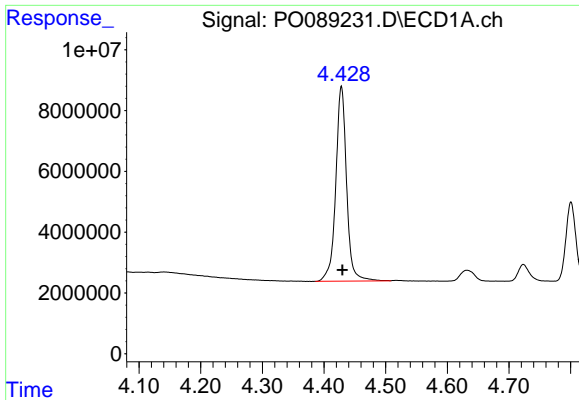
APPROVED

Reviewed By :Yogesh Patel 09/06/2022
 Supervised By :Ankita Jodhani 09/06/2022

Integration File signal 1: autoint1.e
 Integration File signal 2: autoint2.e
 Quant Time: Sep 03 04:24:29 2022
 Quant Method : Z:\pestpcbsrv\HPCHEM1\ECD_O\methods\PO082922.M
 Quant Title : GC EXTRACTABLES
 QLast Update : Mon Aug 29 17:48:02 2022
 Response via : Initial Calibration
 Integrator: ChemStation

Volume Inj. : 2 µl
 Signal #1 Phase : ZB-MR1 Signal #2 Phase: ZB-MR2
 Signal #1 Info : 30Mx0.32mmx 0.50µ Signal #2 Info : 30M x 0.32mm x 0.25µm



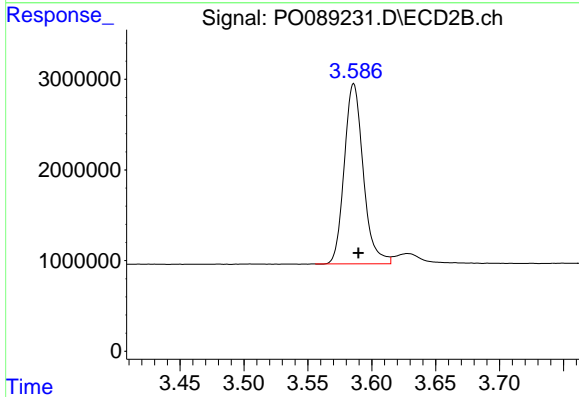


#1 Tetrachloro-m-xylene
 R.T.: 4.428 min
 Delta R.T.: -0.002 min
 Response: 78357926
 Conc: 20.90 ng/ml

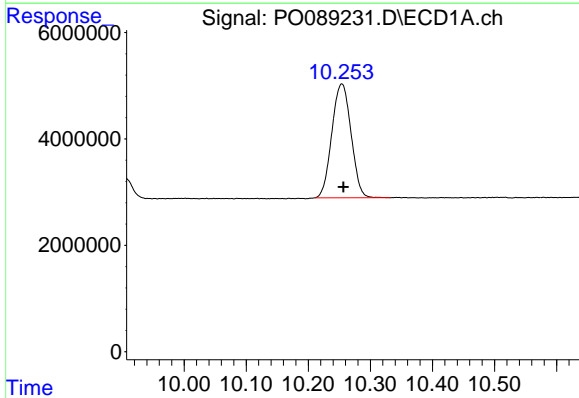
Instrument :
 ECD_O
 ClientSampleId :
 PB147436BS

Manual Integrations
 APPROVED

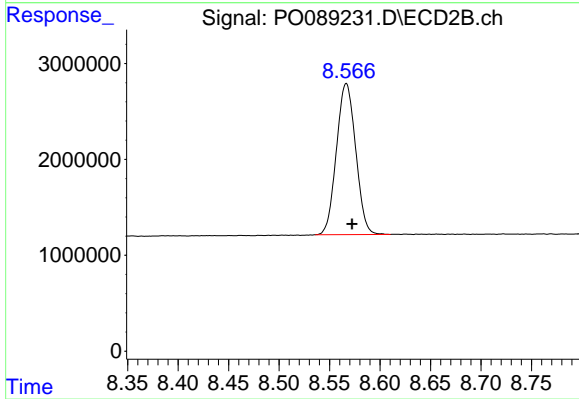
Reviewed By :Yogesh Patel 09/06/2022
 Supervised By :Ankita Jodhani 09/06/2022



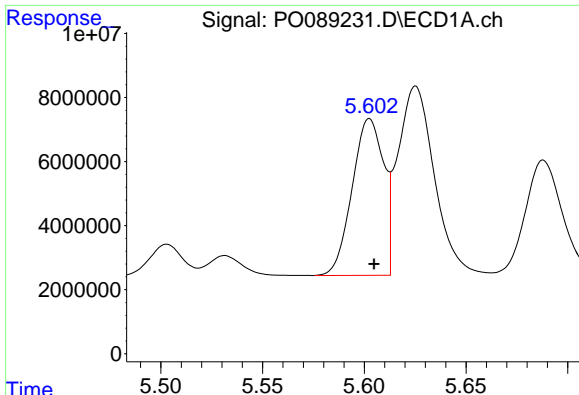
#1 Tetrachloro-m-xylene
 R.T.: 3.586 min
 Delta R.T.: -0.004 min
 Response: 20561914
 Conc: 21.30 ng/ml



#2 Decachlorobiphenyl
 R.T.: 10.254 min
 Delta R.T.: -0.003 min
 Response: 46003516
 Conc: 19.98 ng/ml



#2 Decachlorobiphenyl
 R.T.: 8.567 min
 Delta R.T.: -0.006 min
 Response: 20929609
 Conc: 23.67 ng/ml



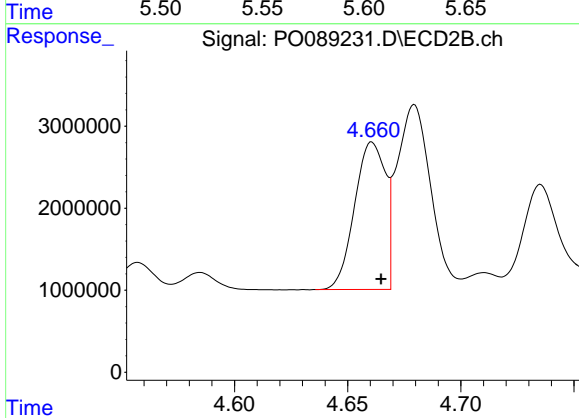
#3 AR-1016-1

R.T.: 5.603 min
 Delta R.T.: -0.002 min
 Response: 52644738
 Conc: 468.22 ng/ml

Instrument :
 ECD_O
 ClientSampleId :
 PB147436BS

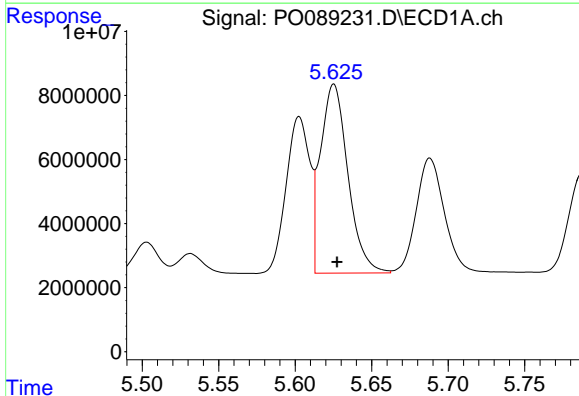
Manual Integrations
 APPROVED

Reviewed By :Yogesh Patel 09/06/2022
 Supervised By :Ankita Jodhani 09/06/2022



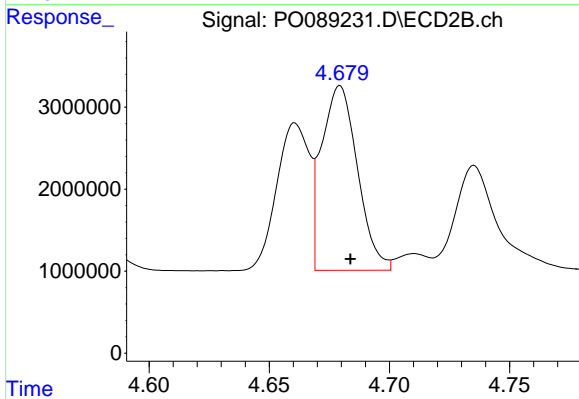
#3 AR-1016-1

R.T.: 4.661 min
 Delta R.T.: -0.004 min
 Response: 16989736
 Conc: 470.46 ng/ml



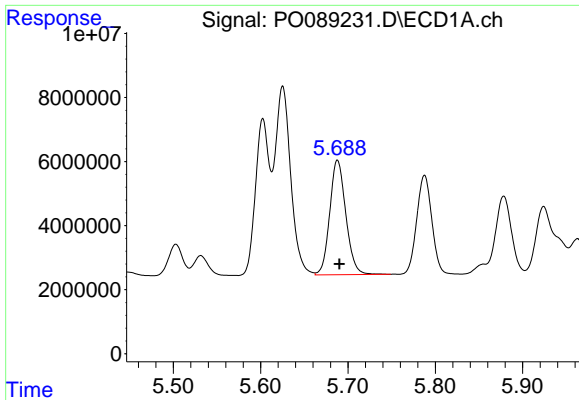
#4 AR-1016-2

R.T.: 5.625 min
 Delta R.T.: -0.002 min
 Response: 73714977
 Conc: 467.74 ng/ml



#4 AR-1016-2

R.T.: 4.679 min
 Delta R.T.: -0.004 min
 Response: 23432659
 Conc: 474.64 ng/ml



#5 AR-1016-3

R.T.: 5.688 min
 Delta R.T.: -0.002 min
 Response: 45739689
 Conc: 468.99 ng/ml

Instrument :

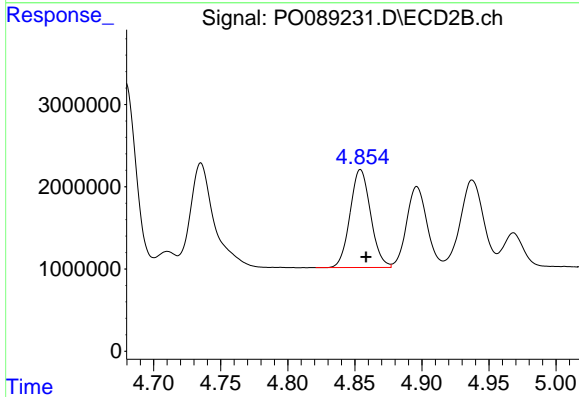
ECD_O

ClientSampleId :

PB147436BS

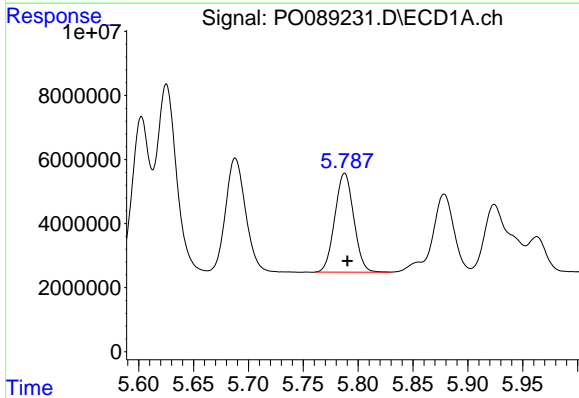
Manual Integrations
 APPROVED

Reviewed By :Yogesh Patel 09/06/2022
 Supervised By :Ankita Jodhani 09/06/2022



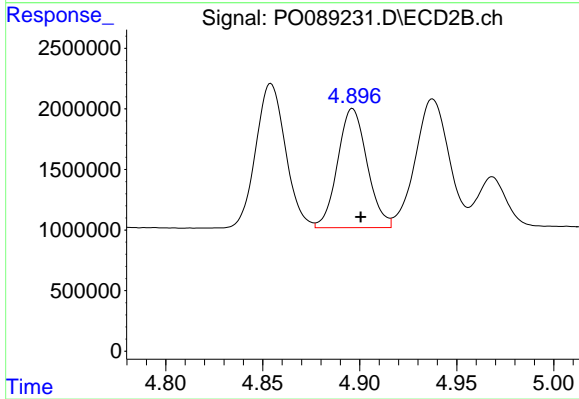
#5 AR-1016-3

R.T.: 4.854 min
 Delta R.T.: -0.004 min
 Response: 12694854
 Conc: 477.30 ng/ml



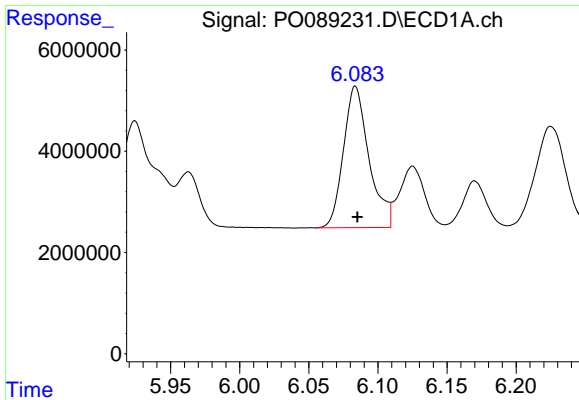
#6 AR-1016-4

R.T.: 5.788 min
 Delta R.T.: -0.002 min
 Response: 37083085
 Conc: 471.28 ng/ml



#6 AR-1016-4

R.T.: 4.896 min
 Delta R.T.: -0.004 min
 Response: 10404366
 Conc: 483.40 ng/ml



#7 AR-1016-5

R.T.: 6.083 min
 Delta R.T.: -0.002 min
 Response: 36196880
 Conc: 471.66 ng/ml

Instrument :

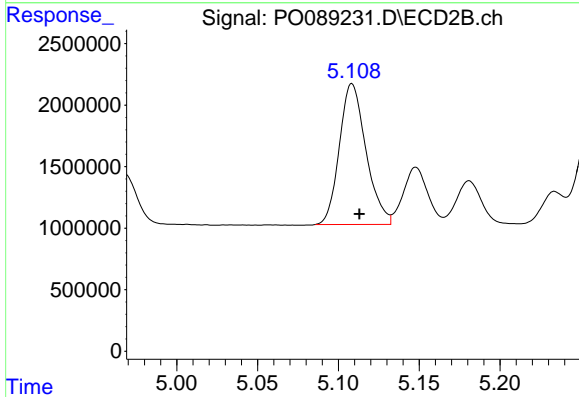
ECD_O

ClientSampleId :

PB147436BS

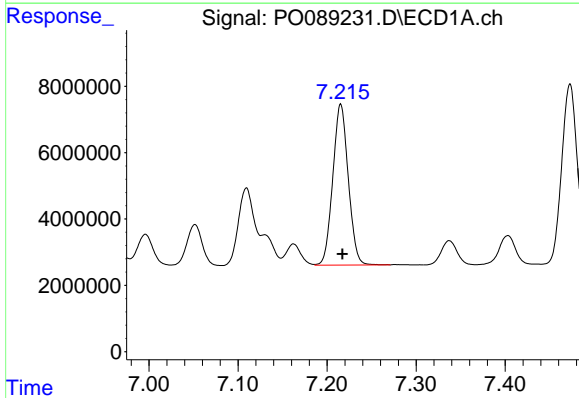
Manual Integrations
 APPROVED

Reviewed By :Yogesh Patel 09/06/2022
 Supervised By :Ankita Jodhani 09/06/2022



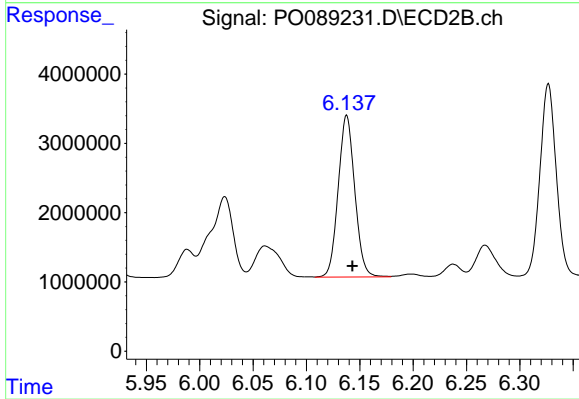
#7 AR-1016-5

R.T.: 5.108 min
 Delta R.T.: -0.005 min
 Response: 13130070
 Conc: 450.00 ng/ml



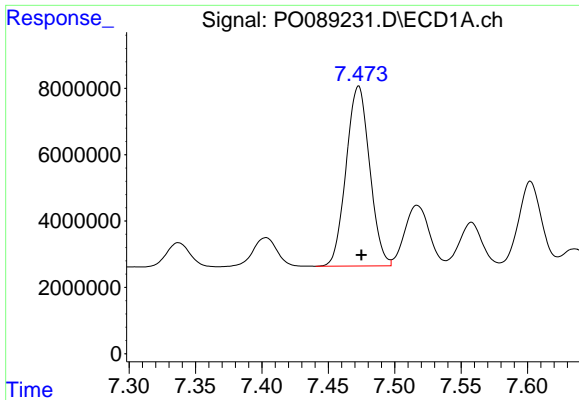
#31 AR-1260-1

R.T.: 7.215 min
 Delta R.T.: -0.002 min
 Response: 58604276
 Conc: 435.22 ng/ml



#31 AR-1260-1

R.T.: 6.138 min
 Delta R.T.: -0.005 min
 Response: 25238354
 Conc: 449.85 ng/ml



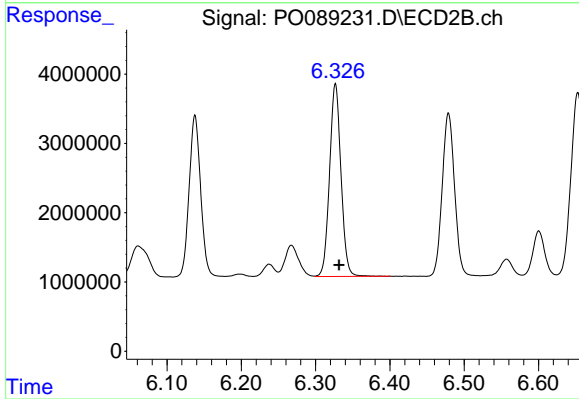
#32 AR-1260-2

R.T.: 7.473 min
 Delta R.T.: -0.002 min
 Response: 66902310
 Conc: 438.38 ng/ml

Instrument :
 ECD_O
 ClientSampleId :
 PB147436BS

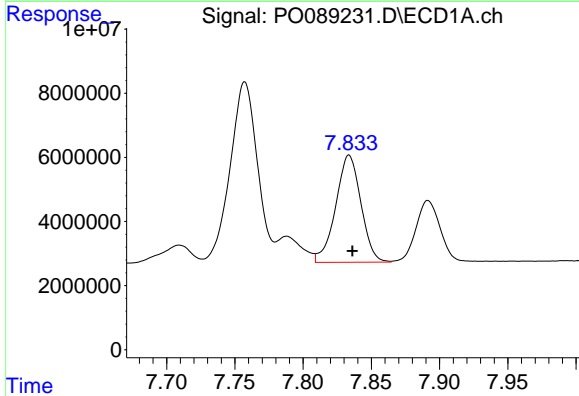
Manual Integrations
 APPROVED

Reviewed By :Yogesh Patel 09/06/2022
 Supervised By :Ankita Jodhani 09/06/2022



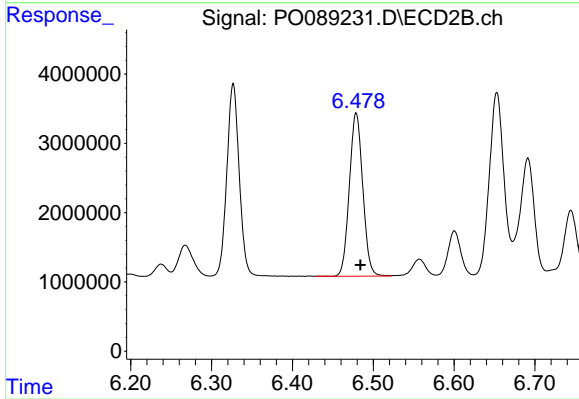
#32 AR-1260-2

R.T.: 6.327 min
 Delta R.T.: -0.005 min
 Response: 29692531
 Conc: 436.96 ng/ml



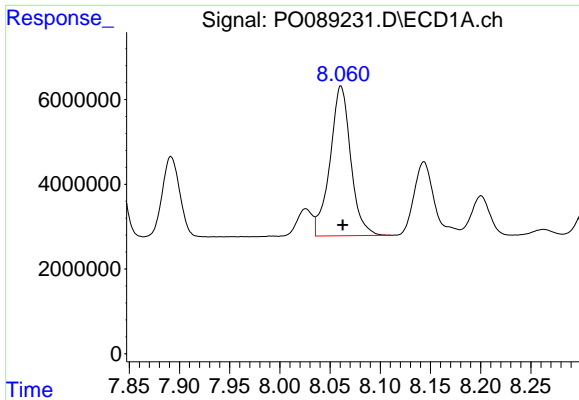
#33 AR-1260-3

R.T.: 7.834 min
 Delta R.T.: -0.003 min
 Response: 42994990
 Conc: 384.77 ng/ml



#33 AR-1260-3

R.T.: 6.479 min
 Delta R.T.: -0.005 min
 Response: 27155080
 Conc: 442.60 ng/ml



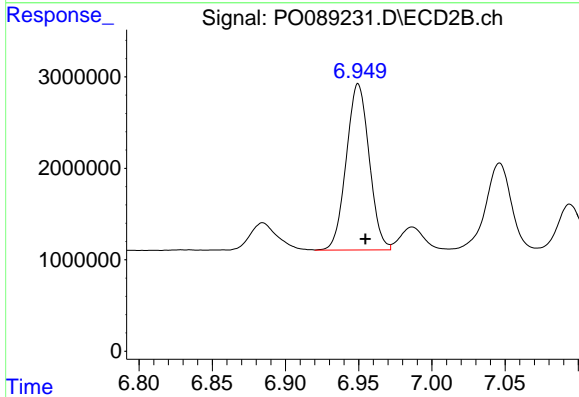
#34 AR-1260-4

R.T.: 8.061 min
 Delta R.T.: -0.002 min
 Response: 50742527
 Conc: 411.04 ng/ml

Instrument :
 ECD_O
 ClientSampleId :
 PB147436BS

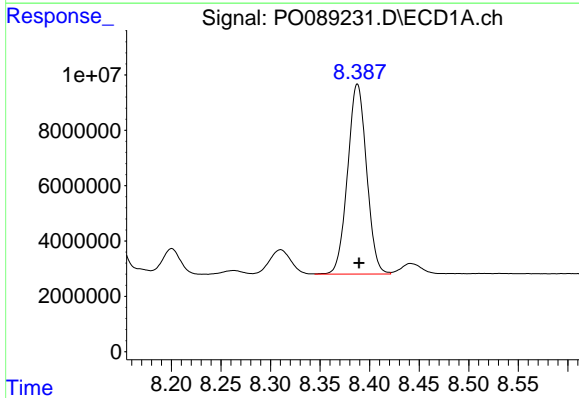
Manual Integrations
 APPROVED

Reviewed By :Yogesh Patel 09/06/2022
 Supervised By :Ankita Jodhani 09/06/2022



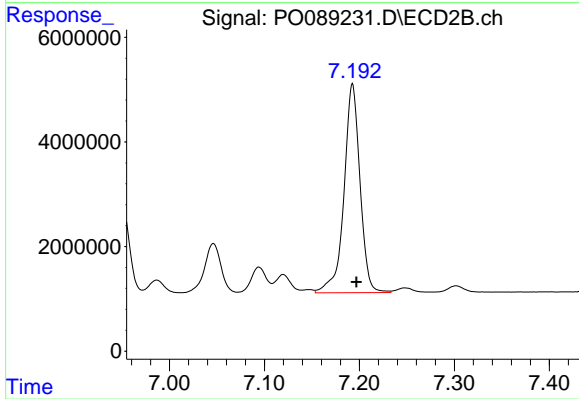
#34 AR-1260-4

R.T.: 6.950 min
 Delta R.T.: -0.005 min
 Response: 19811893
 Conc: 393.15 ng/ml



#35 AR-1260-5

R.T.: 8.388 min
 Delta R.T.: -0.002 min
 Response: 91568198
 Conc: 383.84 ng/ml



#35 AR-1260-5

R.T.: 7.193 min
 Delta R.T.: -0.004 min
 Response: 46800307
 Conc: 409.04 ng/ml