

Data Path : Z:\pestpcbsrv\HPCHEM1\ECD\_0\Data\P0090222\  
 Data File : P0089274.D  
 Signal(s) : Signal #1: ECD1A.ch Signal #2: ECD2B.ch  
 Acq On : 03 Sep 2022 10:36  
 Operator : YP/AJ  
 Sample : N4489-01 10X  
 Misc :  
 ALS Vial : 49 Sample Multiplier: 1

Instrument :  
 ECD\_0  
 ClientSampleId :  
 ORA-73-74-S

Integration File signal 1: autoint1.e  
 Integration File signal 2: autoint2.e  
 Quant Time: Sep 04 22:02:43 2022  
 Quant Method : Z:\pestpcbsrv\HPCHEM1\ECD\_0\methods\P0082922.M  
 Quant Title : GC EXTRACTABLES  
 QLast Update : Mon Aug 29 17:48:02 2022  
 Response via : Initial Calibration  
 Integrator: ChemStation

Volume Inj. : 2 µl  
 Signal #1 Phase : ZB-MR1 Signal #2 Phase: ZB-MR2  
 Signal #1 Info : 30Mx0.32mmx 0.50µ Signal #2 Info : 30M x 0.32mm x 0.25µm

Compound	RT#1	RT#2	Resp#1	Resp#2	ng/ml	ng/ml
-----						
System Monitoring Compounds						
1) SA Tetrachlo...	4.424	3.584	10091976	1595601	2.691	1.653 #
2) SA Decachlor...	10.251	8.566	2924560	1461576	1.270	1.653 #

Target Compounds

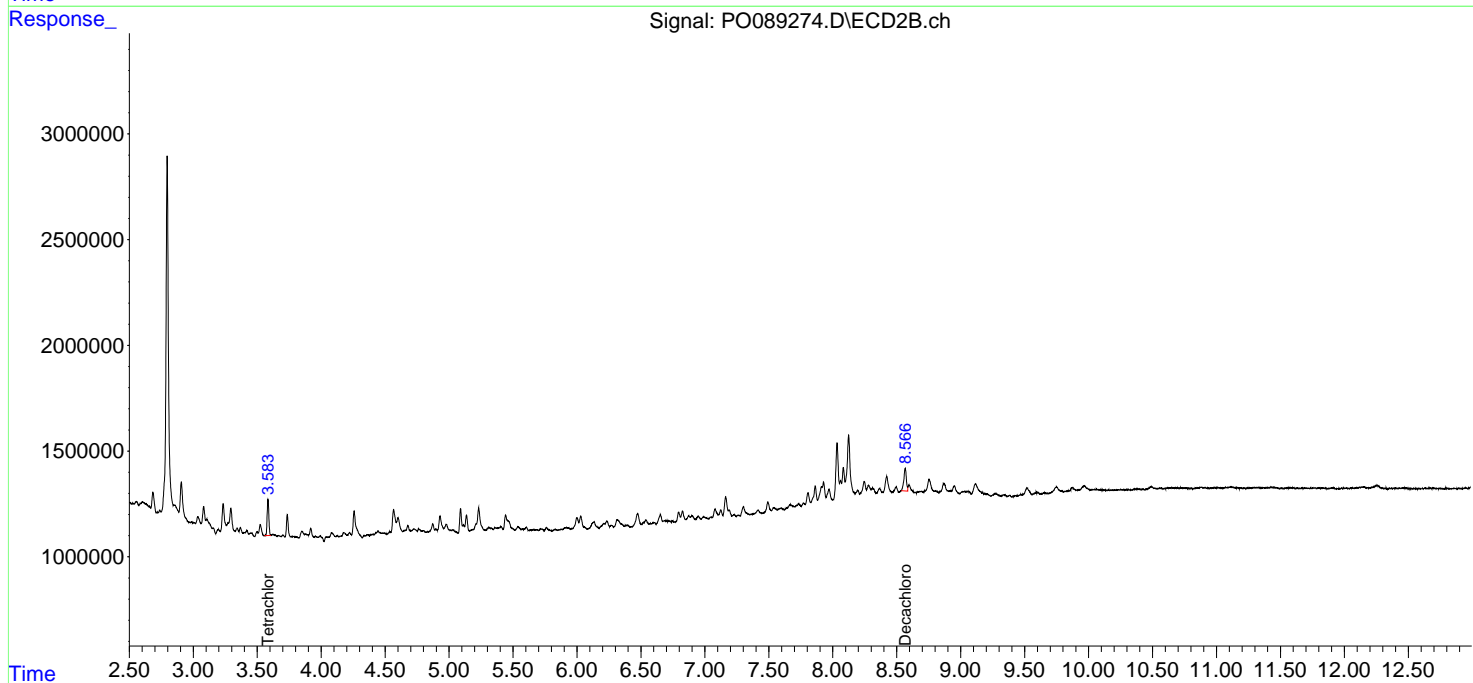
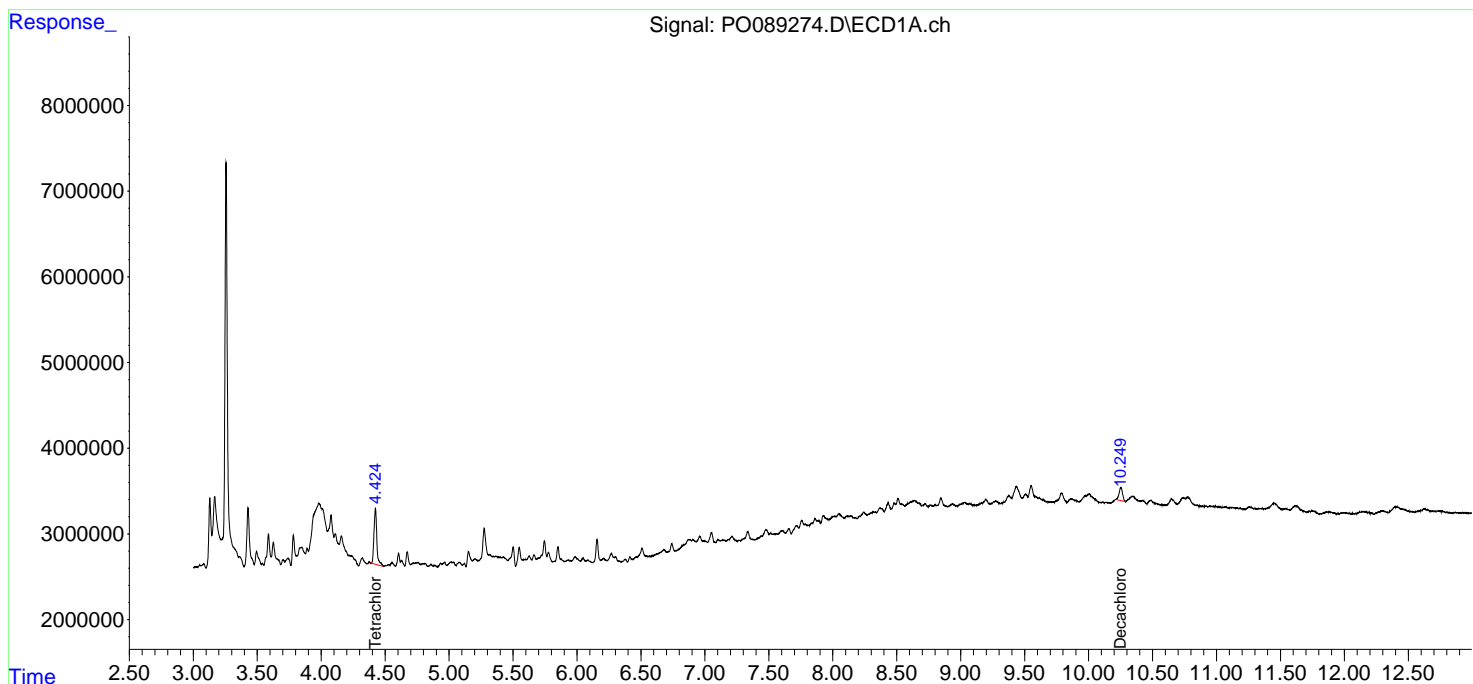
(f)=RT Delta > 1/2 Window (#)=Amounts differ by > 25% (m)=manual int.

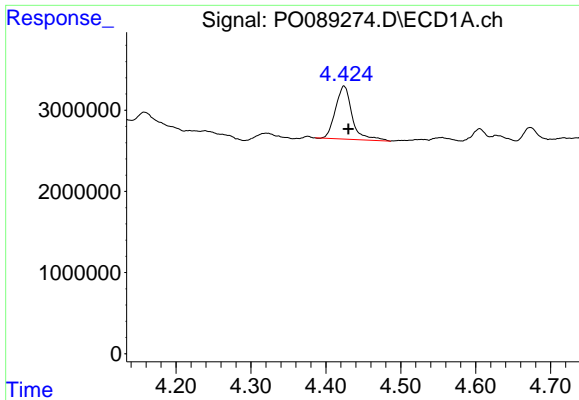
Data Path : Z:\pestpcbsrv\HPCHEM1\ECD\_O\Data\PO090222\  
 Data File : PO089274.D  
 Signal(s) : Signal #1: ECD1A.ch Signal #2: ECD2B.ch  
 Acq On : 03 Sep 2022 10:36  
 Operator : YP/AJ  
 Sample : N4489-01 10X  
 Misc :  
 ALS Vial : 49 Sample Multiplier: 1

Instrument :  
 ECD\_O  
 ClientSampleId :  
 ORA-73-74-S

Integration File signal 1: autoint1.e  
 Integration File signal 2: autoint2.e  
 Quant Time: Sep 04 22:02:43 2022  
 Quant Method : Z:\pestpcbsrv\HPCHEM1\ECD\_O\methods\PO082922.M  
 Quant Title : GC EXTRACTABLES  
 QLast Update : Mon Aug 29 17:48:02 2022  
 Response via : Initial Calibration  
 Integrator: ChemStation

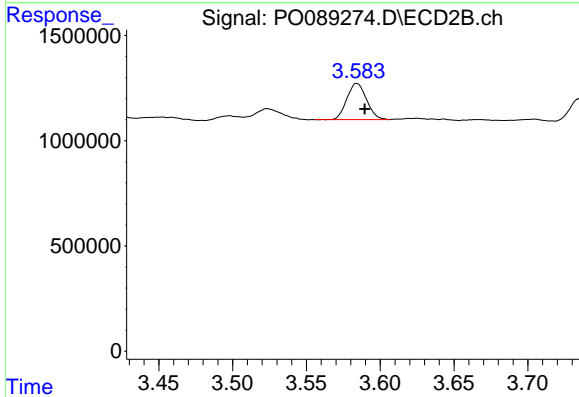
Volume Inj. : 2 µl  
 Signal #1 Phase : ZB-MR1 Signal #2 Phase: ZB-MR2  
 Signal #1 Info : 30Mx0.32mmx 0.50µ Signal #2 Info : 30M x 0.32mm x 0.25µm



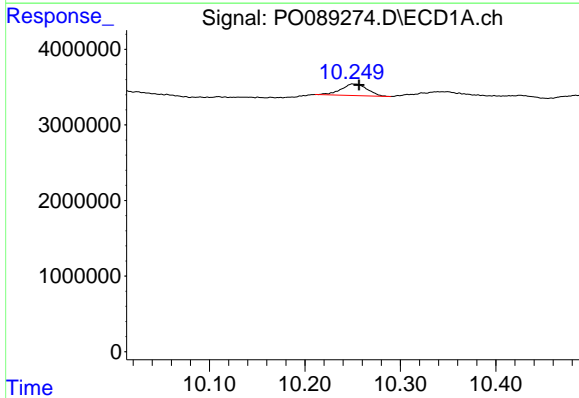


#1 Tetrachloro-m-xylene  
 R.T.: 4.424 min  
 Delta R.T.: -0.006 min  
 Response: 10091976  
 Conc: 2.69 ng/ml

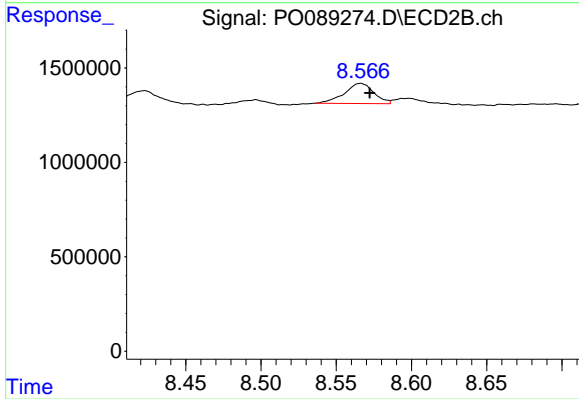
Instrument :  
 ECD\_O  
 ClientSampleId :  
 ORA-73-74-S



#1 Tetrachloro-m-xylene  
 R.T.: 3.584 min  
 Delta R.T.: -0.005 min  
 Response: 1595601  
 Conc: 1.65 ng/ml



#2 Decachlorobiphenyl  
 R.T.: 10.251 min  
 Delta R.T.: -0.006 min  
 Response: 2924560  
 Conc: 1.27 ng/ml



#2 Decachlorobiphenyl  
 R.T.: 8.566 min  
 Delta R.T.: -0.006 min  
 Response: 1461576  
 Conc: 1.65 ng/ml