

Data Path : Z:\pestpcbsrv\HPCHEM1\ECD\_0\Data\P0090222\  
 Data File : P0089278.D  
 Signal(s) : Signal #1: ECD1A.ch Signal #2: ECD2B.ch  
 Acq On : 03 Sep 2022 12:20  
 Operator : YP/AJ  
 Sample : AR1254CCC500  
 Misc :  
 ALS Vial : 6 Sample Multiplier: 1

**Instrument :**  
 ECD\_0  
**ClientSampleId :**  
 AR1254CCC500

**Manual Integrations  
 APPROVED**

Reviewed By :Yogesh Patel 09/06/2022  
 Supervised By :Ankita Jodhani 09/06/2022

Integration File signal 1: autoint1.e  
 Integration File signal 2: autoint2.e  
 Quant Time: Sep 04 22:04:40 2022  
 Quant Method : Z:\pestpcbsrv\HPCHEM1\ECD\_0\methods\P0082922.M  
 Quant Title : GC EXTRACTABLES  
 QLast Update : Mon Aug 29 17:48:02 2022  
 Response via : Initial Calibration  
 Integrator: ChemStation

Volume Inj. : 2 µl  
 Signal #1 Phase : ZB-MR1 Signal #2 Phase: ZB-MR2  
 Signal #1 Info : 30Mx0.32mmx 0.50µ Signal #2 Info : 30M x 0.32mm x 0.25µm

Compound	RT#1	RT#2	Resp#1	Resp#2	ng/ml	ng/ml
-----						
System Monitoring Compounds						
1) SA Tetrachlo...	4.427	3.585	206.0E6	60144789	54.941	62.309
2) SA Decachlor...	10.251	8.565	99973893	46537801	43.423m	52.627
Target Compounds						
26) L6 AR-1254-1	6.462	5.458	55384600	31666401	481.532m	535.252m
27) L6 AR-1254-2	6.681	5.606	78797029	29168527	463.061m	571.806
28) L6 AR-1254-3	7.049	6.008	80729115	43113586	464.821m	545.922
29) L6 AR-1254-4	7.336	6.237	62959720	26440010	504.380	533.391
30) L6 AR-1254-5	7.756	6.653	63783018	34653154	495.201	512.536
-----						

(f)=RT Delta > 1/2 Window (#)=Amounts differ by > 25% (m)=manual int.

Data Path : Z:\pestpcbsrv\HPCHEM1\ECD\_0\Data\PO090222\  
 Data File : PO089278.D  
 Signal(s) : Signal #1: ECD1A.ch Signal #2: ECD2B.ch  
 Acq On : 03 Sep 2022 12:20  
 Operator : YP/AJ  
 Sample : AR1254CCC500  
 Misc :  
 ALS Vial : 6 Sample Multiplier: 1

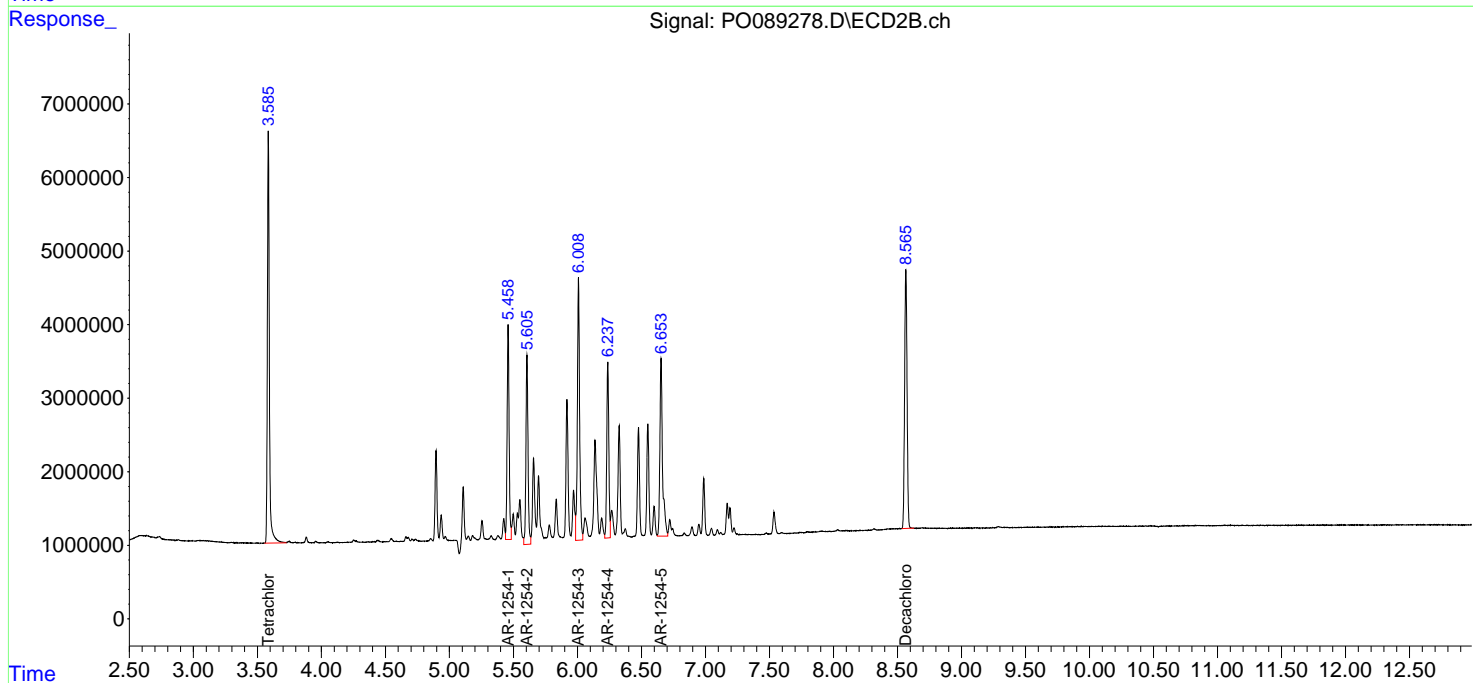
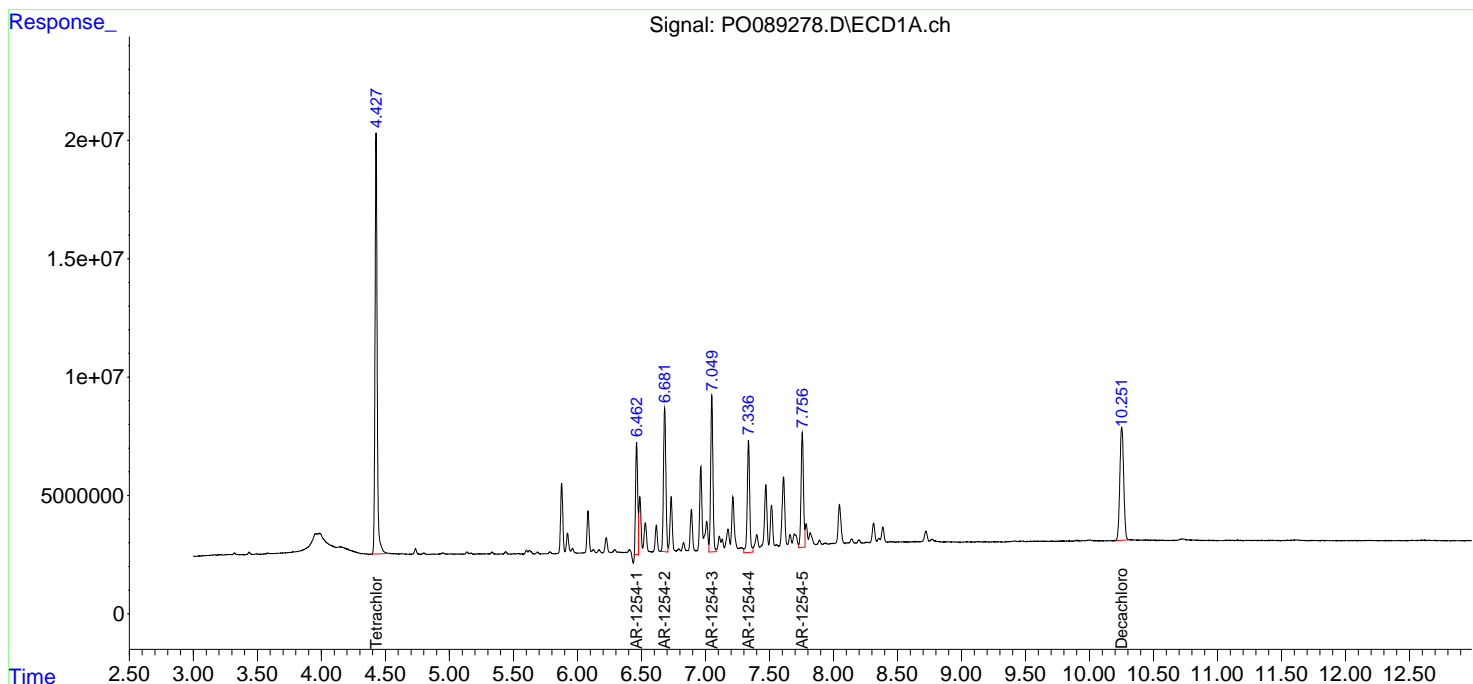
Instrument :  
 ECD\_0  
 ClientSampleId :  
 AR1254CCC500

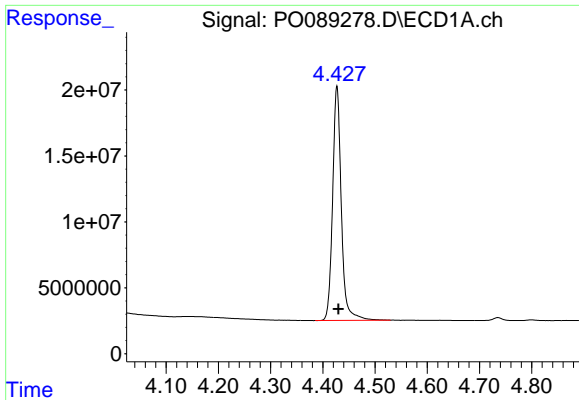
Manual Integrations  
 APPROVED

Reviewed By :Yogesh Patel 09/06/2022  
 Supervised By :Ankita Jodhani 09/06/2022

Integration File signal 1: autoint1.e  
 Integration File signal 2: autoint2.e  
 Quant Time: Sep 04 22:04:40 2022  
 Quant Method : Z:\pestpcbsrv\HPCHEM1\ECD\_0\methods\PO082922.M  
 Quant Title : GC EXTRACTABLES  
 QLast Update : Mon Aug 29 17:48:02 2022  
 Response via : Initial Calibration  
 Integrator: ChemStation

Volume Inj. : 2 µl  
 Signal #1 Phase : ZB-MR1 Signal #2 Phase: ZB-MR2  
 Signal #1 Info : 30Mx0.32mmx 0.50µm Signal #2 Info : 30M x 0.32mm x 0.25µm





#1 Tetrachloro-m-xylene

R.T.: 4.427 min  
 Delta R.T.: -0.003 min  
 Response: 206007169  
 Conc: 54.94 ng/ml

Instrument :

ECD\_O

ClientSampleId :

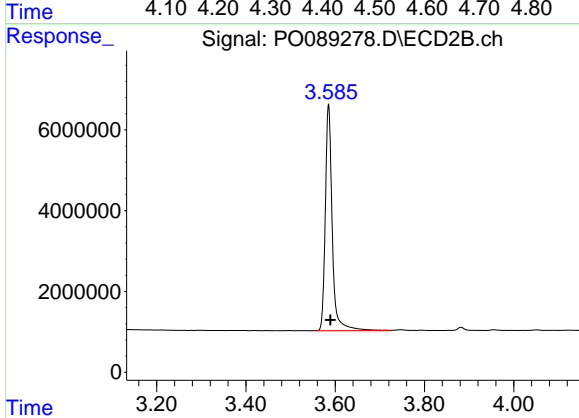
AR1254CCC500

Manual Integrations

APPROVED

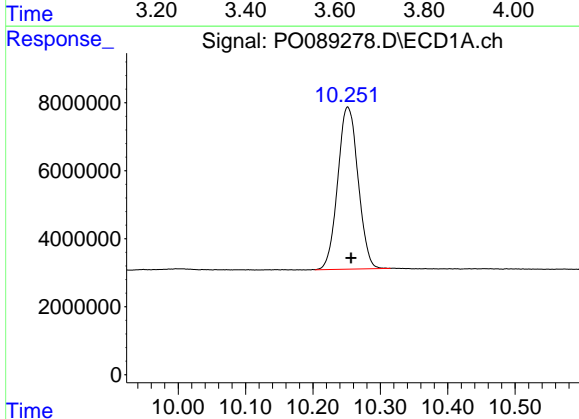
Reviewed By :Yogesh Patel 09/06/2022

Supervised By :Ankita Jodhani 09/06/2022



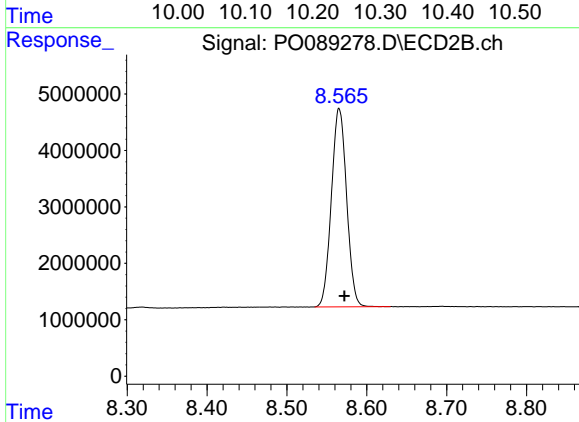
#1 Tetrachloro-m-xylene

R.T.: 3.585 min  
 Delta R.T.: -0.004 min  
 Response: 60144789  
 Conc: 62.31 ng/ml



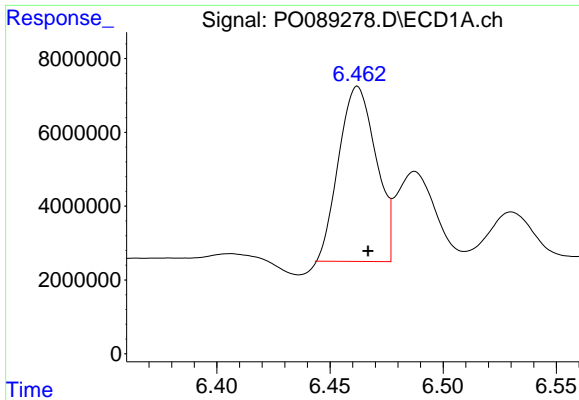
#2 Decachlorobiphenyl

R.T.: 10.251 min  
 Delta R.T.: -0.006 min  
 Response: 99973893  
 Conc: 43.42 ng/ml m



#2 Decachlorobiphenyl

R.T.: 8.565 min  
 Delta R.T.: -0.007 min  
 Response: 46537801  
 Conc: 52.63 ng/ml



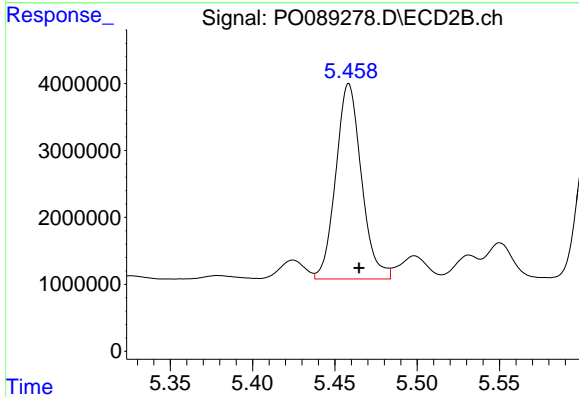
#26 AR-1254-1

R.T.: 6.462 min  
 Delta R.T.: -0.005 min  
 Response: 55384600  
 Conc: 481.53 ng/ml

Instrument :  
 ECD\_O  
 ClientSampleId :  
 AR1254CCC500

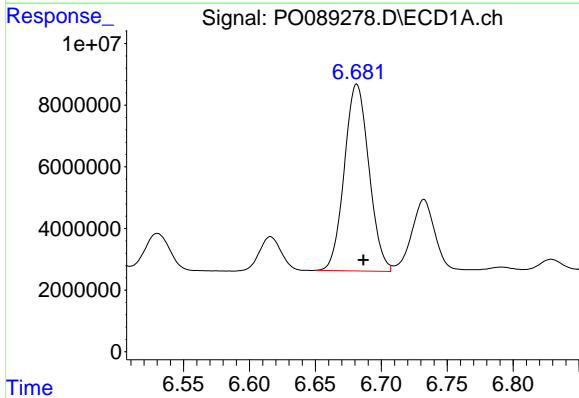
Manual Integrations  
 APPROVED

Reviewed By :Yogesh Patel 09/06/2022  
 Supervised By :Ankita Jodhani 09/06/2022



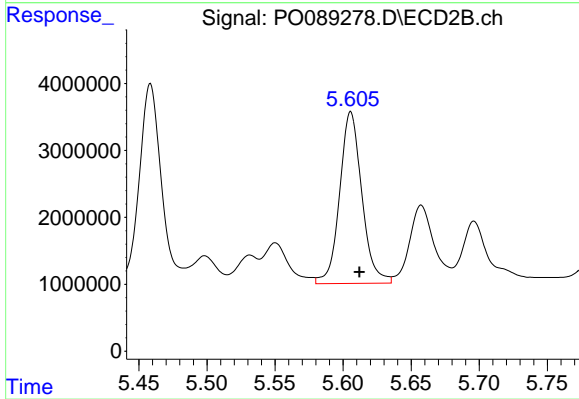
#26 AR-1254-1

R.T.: 5.458 min  
 Delta R.T.: -0.007 min  
 Response: 31666401  
 Conc: 535.25 ng/ml m



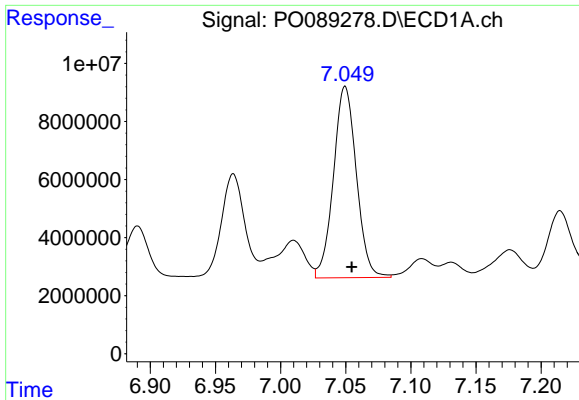
#27 AR-1254-2

R.T.: 6.681 min  
 Delta R.T.: -0.005 min  
 Response: 78797029  
 Conc: 463.06 ng/ml m



#27 AR-1254-2

R.T.: 5.606 min  
 Delta R.T.: -0.006 min  
 Response: 29168527  
 Conc: 571.81 ng/ml



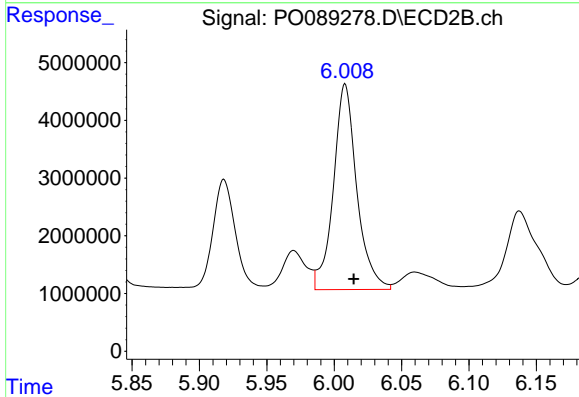
#28 AR-1254-3

R.T.: 7.049 min  
 Delta R.T.: -0.005 min  
 Response: 80729115  
 Conc: 464.82 ng/ml

Instrument :  
 ECD\_O  
 ClientSampleId :  
 AR1254CCC500

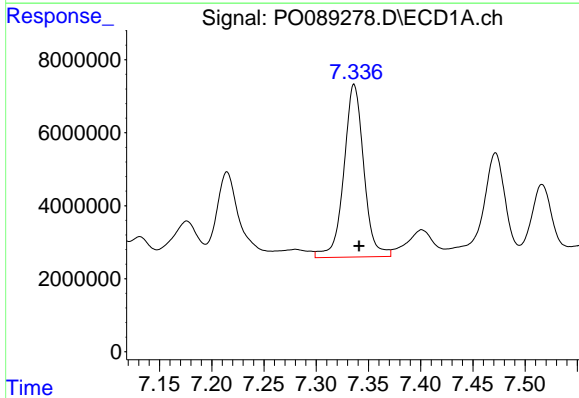
Manual Integrations  
 APPROVED

Reviewed By :Yogesh Patel 09/06/2022  
 Supervised By :Ankita Jodhani 09/06/2022



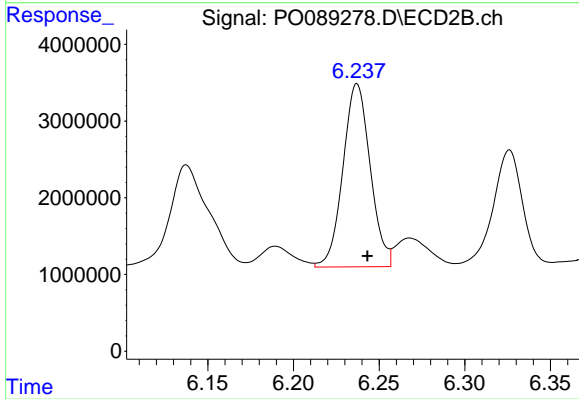
#28 AR-1254-3

R.T.: 6.008 min  
 Delta R.T.: -0.006 min  
 Response: 43113586  
 Conc: 545.92 ng/ml



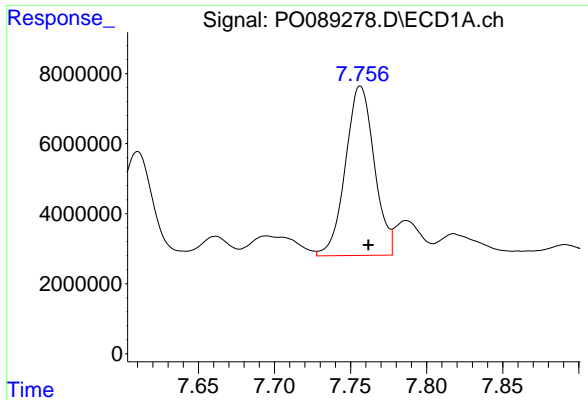
#29 AR-1254-4

R.T.: 7.336 min  
 Delta R.T.: -0.005 min  
 Response: 62959720  
 Conc: 504.38 ng/ml



#29 AR-1254-4

R.T.: 6.237 min  
 Delta R.T.: -0.006 min  
 Response: 26440010  
 Conc: 533.39 ng/ml



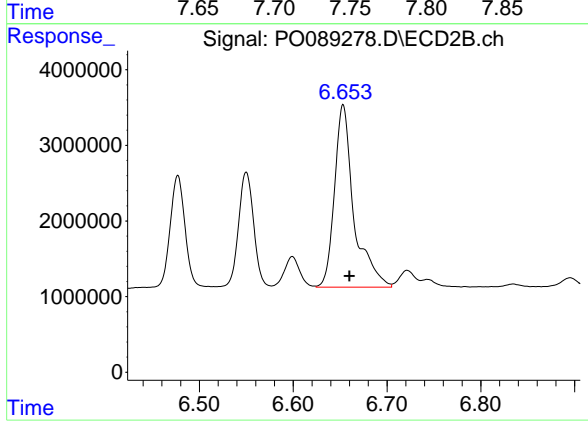
#30 AR-1254-5

R.T.: 7.756 min  
 Delta R.T.: -0.005 min  
 Response: 63783018  
 Conc: 495.20 ng/ml

Instrument :  
 ECD\_O  
 ClientSampleId :  
 AR1254CCC500

Manual Integrations  
 APPROVED

Reviewed By :Yogesh Patel 09/06/2022  
 Supervised By :Ankita Jodhani 09/06/2022



#30 AR-1254-5

R.T.: 6.653 min  
 Delta R.T.: -0.007 min  
 Response: 34653154  
 Conc: 512.54 ng/ml