

Data Path : Z:\pestpcbsrv\HPCHEM1\ECD\_0\Data\P0090321\  
 Data File : P0080929.D  
 Signal(s) : Signal #1: ECD1A.CH Signal #2: ECD2B.CH  
 Acq On : 03 Sep 2021 14:59  
 Operator : DD\AJ  
 Sample : AR1660CCC500  
 Misc :  
 ALS Vial : 3 Sample Multiplier: 1

Instrument :  
 ECD\_O  
 ClientSampled :

Integration File signal 1: autoint1.e  
 Integration File signal 2: autoint2.e  
 Quant Time: Sep 04 04:04:45 2021  
 Quant Method : Z:\pestpcbsrv\HPCHEM1\ECD\_0\methods\P0090221.M  
 Quant Title : GC EXTRACTABLES  
 QLast Update : Fri Sep 03 07:15:29 2021  
 Response via : Initial Calibration  
 Integrator: ChemStation 6890 Scale Mode: Small noise peaks clipped

Volume Inj. : 2 µl  
 Signal #1 Phase : ZB-MR1 Signal #2 Phase: ZB-MR2  
 Signal #1 Info : 30Mx0.32mmx 0.50µ Signal #2 Info : 30M x 0.32mm x 0.25µm

| Compound                    | RT#1   | RT#2  | Resp#1  | Resp#2  | ng/ml    | ng/ml     |
|-----------------------------|--------|-------|---------|---------|----------|-----------|
| System Monitoring Compounds |        |       |         |         |          |           |
| 1) SA Tetrachlo...          | 4.926  | 4.054 | 4078665 | 1201248 | 51.666   | 48.610    |
| 2) SA Decachlor...          | 10.988 | 9.415 | 3431163 | 1243761 | 57.787   | 53.279    |
| Target Compounds            |        |       |         |         |          |           |
| 3) L1 AR-1016-1             | 6.257  | 5.326 | 1567333 | 486968  | 552.678  | 504.882   |
| 4) L1 AR-1016-2             | 6.281  | 5.347 | 2193410 | 664686  | 549.723  | 496.980   |
| 5) L1 AR-1016-3             | 6.347  | 5.541 | 1377743 | 365788  | 544.441  | 511.665   |
| 6) L1 AR-1016-4             | 6.454  | 5.592 | 1138950 | 307144  | 537.590  | 510.962   |
| 7) L1 AR-1016-5             | 6.771  | 5.824 | 1137428 | 384838  | 579.403  | 511.236   |
| 8) L2 AR-1221-1             | 5.173  | 4.314 | 139039  | 47660   | 143.088  | 145.599   |
| 9) L2 AR-1221-2             | 5.279  | 4.416 | 217420  | 67720   | 295.761  | 274.712   |
| 10) L2 AR-1221-3            | 5.367  | 4.506 | 800825  | 257379  | 351.803  | 328.594   |
| 11) L3 AR-1232-1            | 5.367  | 4.506 | 800825  | 257379  | 465.501  | 423.910   |
| 12) L3 AR-1232-2            | 5.959  | 5.347 | 1165484 | 664686  | 1187.215 | 1084.419  |
| 13) L3 AR-1232-3            | 6.281  | 5.541 | 2193410 | 365788  | 1211.843 | 1126.862  |
| 14) L3 AR-1232-4            | 6.454  | 5.637 | 1138950 | 375744  | 1175.532 | 1245.902  |
| 15) L3 AR-1232-5            | 6.553  | 5.824 | 913441  | 384838  | 1363.631 | 1156.685  |
| 16) L4 AR-1242-1            | 6.257  | 5.326 | 1567333 | 486968  | 716.125  | 653.755   |
| 17) L4 AR-1242-2            | 6.281  | 5.347 | 2193410 | 664686  | 717.075  | 651.615   |
| 18) L4 AR-1242-3            | 6.347  | 5.541 | 1377743 | 365788  | 719.857  | 659.167   |
| 19) L4 AR-1242-4            | 6.454  | 5.637 | 1138950 | 375744  | 738.366  | 664.151   |
| 20) L4 AR-1242-5            | 7.242  | 6.206 | 163794  | 310090  | 102.233  | 428.155 # |
| 21) L5 AR-1248-1            | 6.257  | 5.326 | 1567333 | 486968  | 908.389  | 822.528   |
| 22) L5 AR-1248-2            | 6.553  | 5.592 | 913441  | 307144  | 410.705  | 369.803   |
| 23) L5 AR-1248-3            | 6.771  | 5.637 | 1137428 | 375744  | 429.795  | 442.713   |
| 24) L5 AR-1248-4            | 7.202  | 5.824 | 192338  | 384838  | 66.781   | 389.238 # |
| 25) L5 AR-1248-5            | 7.242  | 6.250 | 163794  | 47984   | 59.559   | 52.927    |
| 26) L6 AR-1254-1            | 7.172  | 6.206 | 855454  | 310090  | 264.700  | 196.026 # |
| 27) L6 AR-1254-2            | 7.402  | 6.366 | 939377  | 301206  | 188.745  | 208.336   |
| 28) L6 AR-1254-3            | 7.786  | 6.807 | 533683  | 531360  | 105.547  | 237.501 # |
| 29) L6 AR-1254-4            | 8.081  | 7.031 | 289009  | 60117   | 77.336   | 42.468 #  |
| 30) L6 AR-1254-5            | 8.513  | 7.463 | 2966633 | 1045417 | 717.171  | 495.473 # |
| 31) L7 AR-1260-1            | 7.953  | 6.927 | 2061309 | 740005  | 593.005  | 504.230   |
| 32) L7 AR-1260-2            | 8.220  | 7.126 | 2338641 | 890292  | 524.748  | 507.202   |
| 33) L7 AR-1260-3            | 8.588  | 7.283 | 1551804 | 886389  | 591.345  | 484.186   |
| 34) L7 AR-1260-4            | 8.819  | 7.769 | 1860646 | 628150  | 581.263  | 531.704   |
| 35) L7 AR-1260-5            | 9.148  | 8.017 | 3439551 | 1418924 | 574.538  | 501.252   |
| 36) L8 AR-1262-1            | 8.588  | 7.463 | 1551804 | 1045417 | 348.250  | 984.294 # |
| 37) L8 AR-1262-2            | 9.148  | 8.017 | 3439551 | 1418924 | 448.845  | 431.125   |
| 38) L8 AR-1262-3            | 9.484f | 8.305 | 2276142 | 291117  | 667.774  | 217.216 # |
| 39) L8 AR-1262-4            | 9.537f | 8.369 | 1237580 | 1044499 | 591.043  | 440.295 # |
| 40) L8 AR-1262-5            | 10.231 | 8.872 | 875407  | 328210  | 315.888  | 283.546   |
| 41) L9 AR-1268-1            | 9.484f | 8.305 | 2276142 | 291117  | 246.599  | 77.036 #  |

Data Path : Z:\pestpcbsrv\HPCHEM1\ECD\_0\Data\P0090321\  
 Data File : P0080929.D  
 Signal(s) : Signal #1: ECD1A.CH Signal #2: ECD2B.CH  
 Acq On : 03 Sep 2021 14:59  
 Operator : DD\AJ  
 Sample : AR1660CCC500  
 Misc :  
 ALS Vial : 3 Sample Multiplier: 1

Instrument :  
 ECD\_0  
 ClientSampleId :

Integration File signal 1: autoint1.e  
 Integration File signal 2: autoint2.e  
 Quant Time: Sep 04 04:04:45 2021  
 Quant Method : Z:\pestpcbsrv\HPCHEM1\ECD\_0\methods\P0090221.M  
 Quant Title : GC EXTRACTABLES  
 QLast Update : Fri Sep 03 07:15:29 2021  
 Response via : Initial Calibration  
 Integrator: ChemStation 6890 Scale Mode: Small noise peaks clipped

Volume Inj. : 2 µl  
 Signal #1 Phase : ZB-MR1 Signal #2 Phase: ZB-MR2  
 Signal #1 Info : 30Mx0.32mmx 0.50µ Signal #2 Info : 30M x 0.32mm x 0.25µm

|     | Compound     | RT#1   | RT#2  | Resp#1  | Resp#2  | ng/ml   | ng/ml     |
|-----|--------------|--------|-------|---------|---------|---------|-----------|
| 42) | L9 AR-1268-2 | 9.537f | 8.369 | 1237580 | 1044499 | 144.754 | 307.745 # |
| 43) | L9 AR-1268-3 | 9.785  | 8.579 | 92314   | 38003   | 12.975  | 12.865    |
| 44) | L9 AR-1268-4 | 10.231 | 8.872 | 875407  | 328210  | 278.034 | 249.427   |
| 45) | L9 AR-1268-5 | 10.649 | 9.161 | 294944  | 114941  | 13.084  | 13.516    |

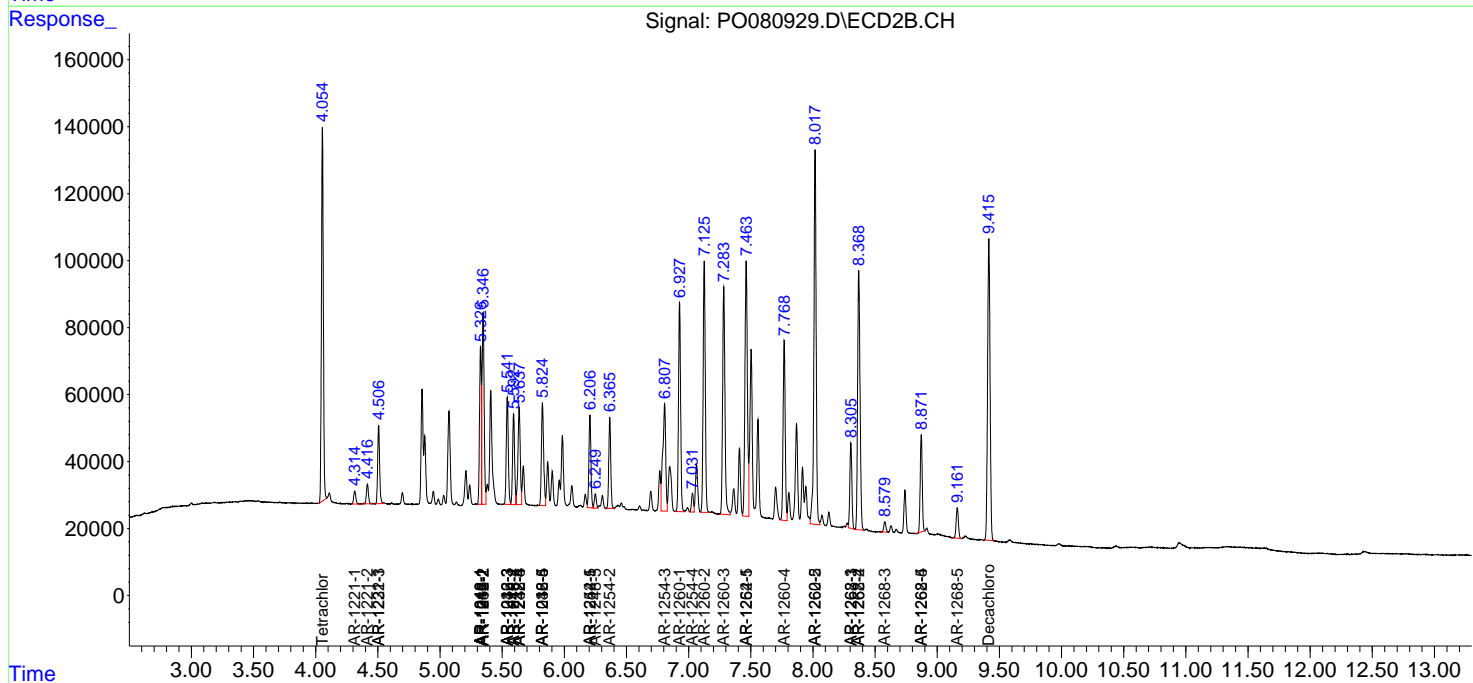
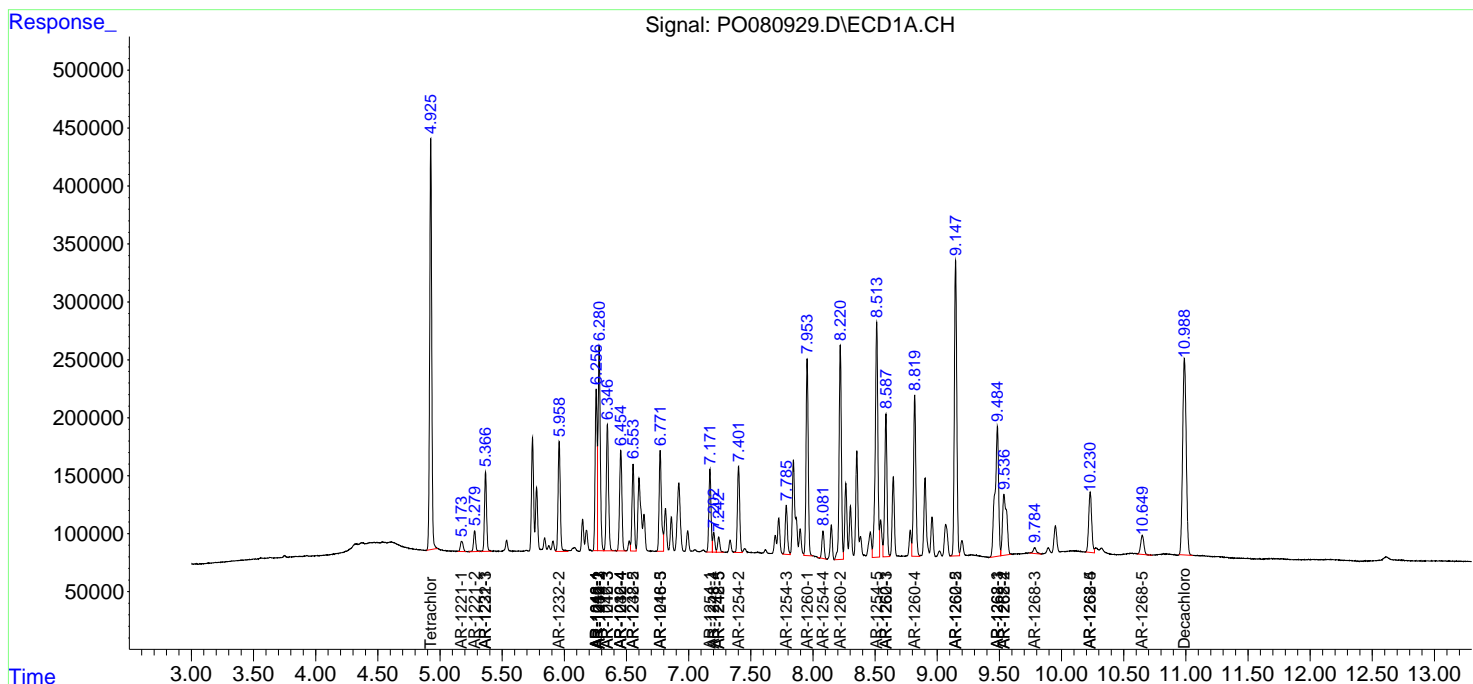
(f)=RT Delta > 1/2 Window (#)=Amounts differ by > 25% (m)=manual int.

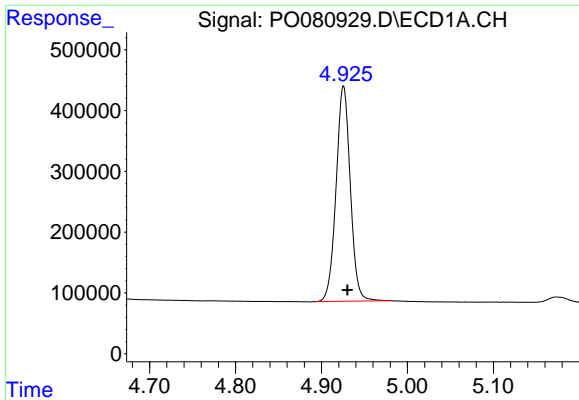
Data Path : Z:\pestpcbsrv\HPCHEM1\ECD\_0\Data\PO090321\  
 Data File : PO080929.D  
 Signal(s) : Signal #1: ECD1A.CH Signal #2: ECD2B.CH  
 Acq On : 03 Sep 2021 14:59  
 Operator : DD\AJ  
 Sample : AR1660CCC500  
 Misc :  
 ALS Vial : 3 Sample Multiplier: 1

Instrument :  
 ECD\_O  
 ClientSampled :

Integration File signal 1: autoint1.e  
 Integration File signal 2: autoint2.e  
 Quant Time: Sep 04 04:04:45 2021  
 Quant Method : Z:\pestpcbsrv\HPCHEM1\ECD\_0\methods\PO090221.M  
 Quant Title : GC EXTRACTABLES  
 QLast Update : Fri Sep 03 07:15:29 2021  
 Response via : Initial Calibration  
 Integrator: ChemStation 6890 Scale Mode: Small noise peaks clipped

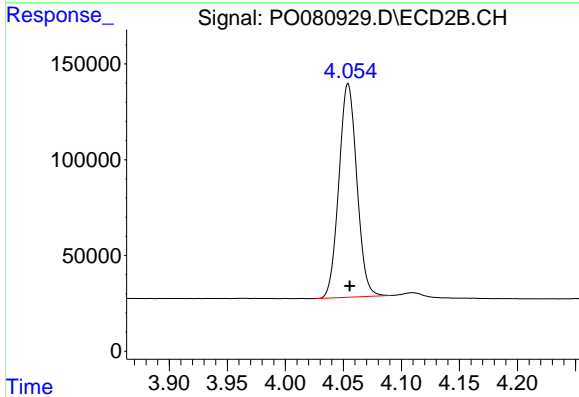
Volume Inj. : 2 µl  
 Signal #1 Phase : ZB-MR1 Signal #2 Phase: ZB-MR2  
 Signal #1 Info : 30Mx0.32mmx 0.50µ Signal #2 Info : 30M x 0.32mm x 0.25µm



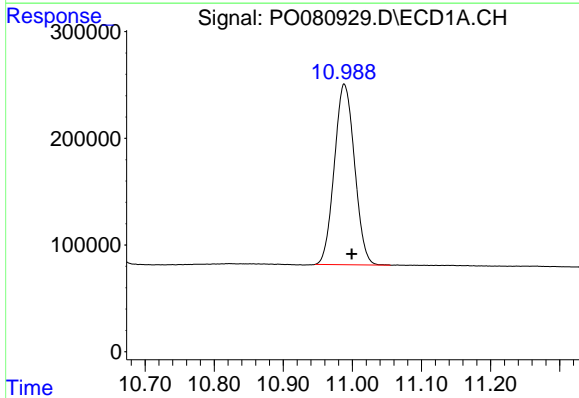


#1 Tetrachloro-m-xylene  
 R.T.: 4.926 min  
 Delta R.T.: -0.004 min  
 Response: 4078665  
 Conc: 51.67 ng/ml

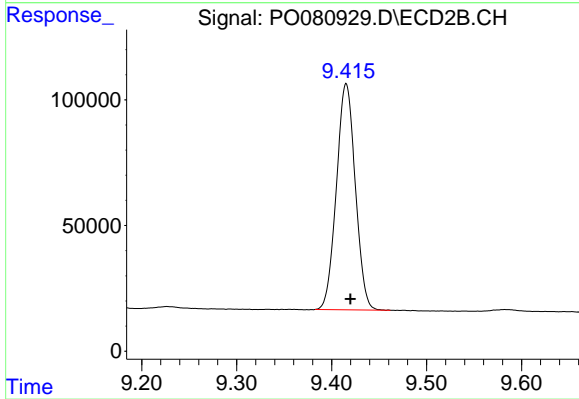
Instrument :  
 ECD\_O  
 ClientSampleId :



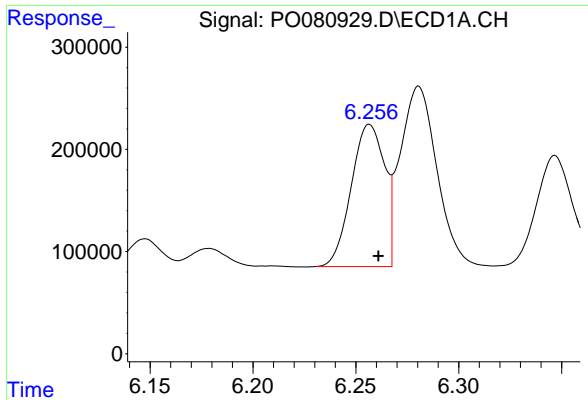
#1 Tetrachloro-m-xylene  
 R.T.: 4.054 min  
 Delta R.T.: -0.001 min  
 Response: 1201248  
 Conc: 48.61 ng/ml



#2 Decachlorobiphenyl  
 R.T.: 10.988 min  
 Delta R.T.: -0.011 min  
 Response: 3431163  
 Conc: 57.79 ng/ml

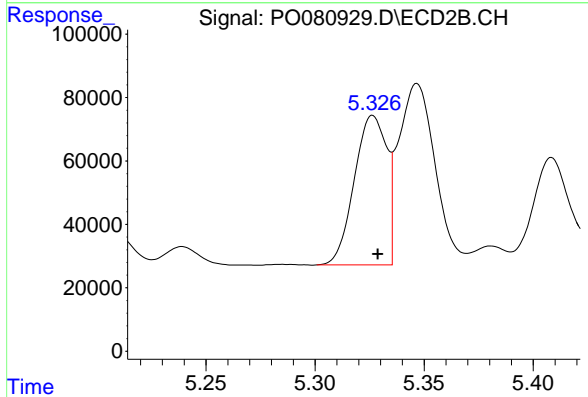


#2 Decachlorobiphenyl  
 R.T.: 9.415 min  
 Delta R.T.: -0.005 min  
 Response: 1243761  
 Conc: 53.28 ng/ml

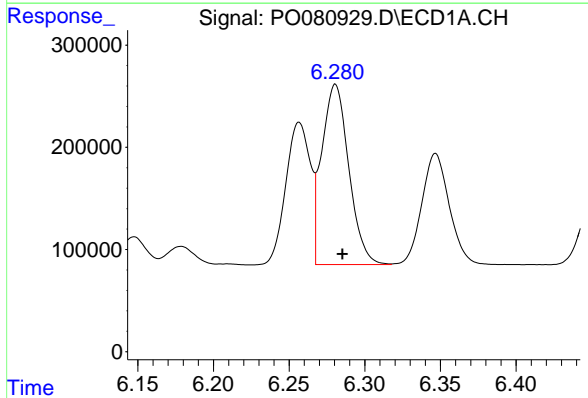


#3 AR-1016-1  
 R.T.: 6.257 min  
 Delta R.T.: -0.004 min  
 Response: 1567333  
 Conc: 552.68 ng/ml

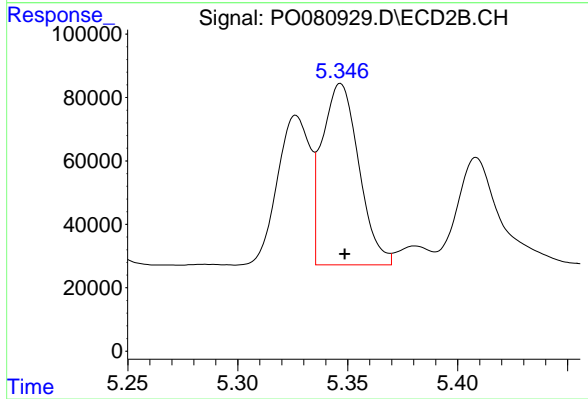
Instrument :  
 ECD\_O  
 ClientSampled :



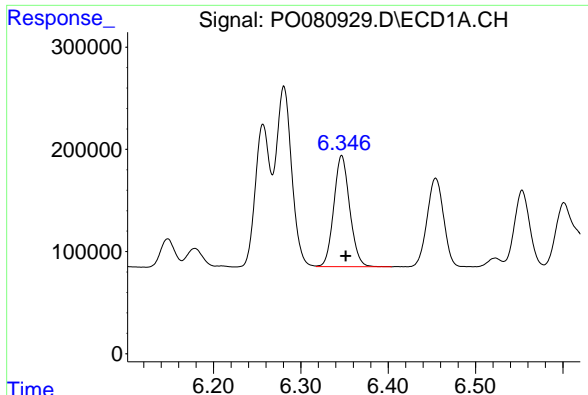
#3 AR-1016-1  
 R.T.: 5.326 min  
 Delta R.T.: -0.002 min  
 Response: 486968  
 Conc: 504.88 ng/ml



#4 AR-1016-2  
 R.T.: 6.281 min  
 Delta R.T.: -0.005 min  
 Response: 2193410  
 Conc: 549.72 ng/ml



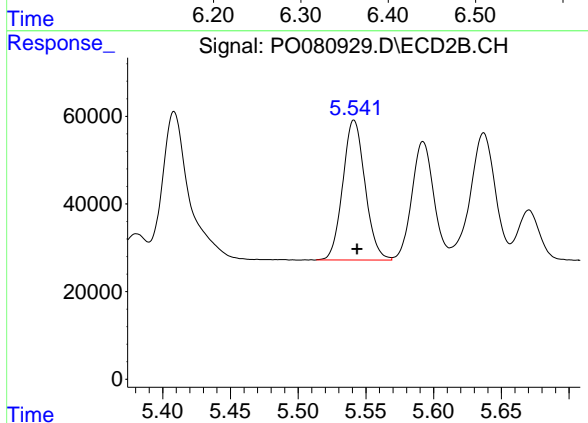
#4 AR-1016-2  
 R.T.: 5.347 min  
 Delta R.T.: -0.002 min  
 Response: 664686  
 Conc: 496.98 ng/ml



#5 AR-1016-3

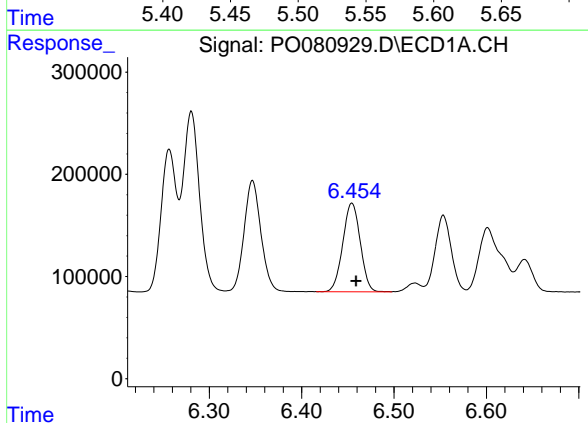
R.T.: 6.347 min  
Delta R.T.: -0.005 min  
Response: 1377743  
Conc: 544.44 ng/ml

Instrument :  
ECD\_O  
ClientSampleId :



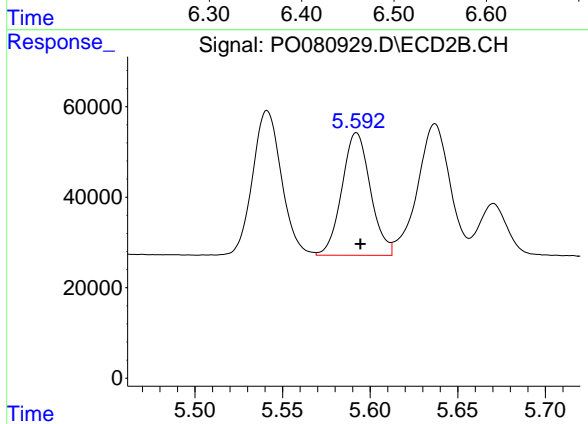
#5 AR-1016-3

R.T.: 5.541 min  
Delta R.T.: -0.002 min  
Response: 365788  
Conc: 511.67 ng/ml



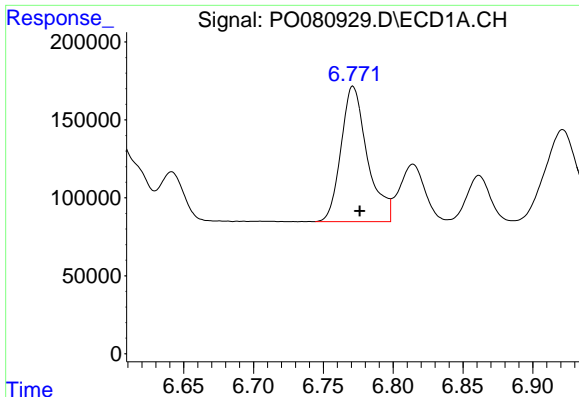
#6 AR-1016-4

R.T.: 6.454 min  
Delta R.T.: -0.005 min  
Response: 1138950  
Conc: 537.59 ng/ml



#6 AR-1016-4

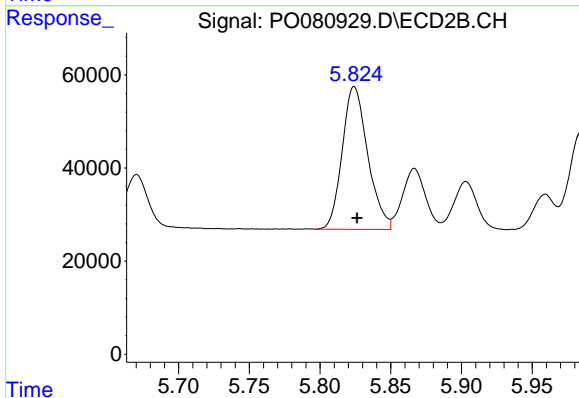
R.T.: 5.592 min  
Delta R.T.: -0.002 min  
Response: 307144  
Conc: 510.96 ng/ml



#7 AR-1016-5

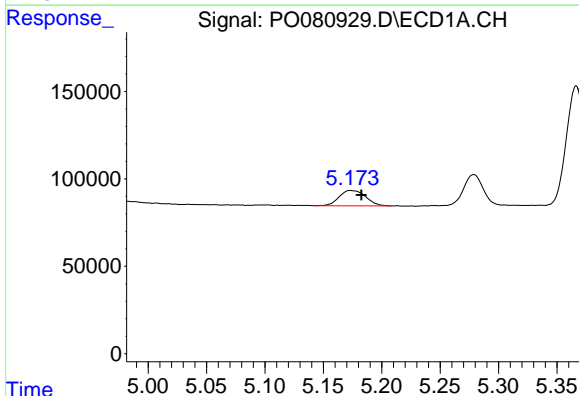
R.T.: 6.771 min  
 Delta R.T.: -0.005 min  
 Response: 1137428  
 Conc: 579.40 ng/ml

Instrument :  
 ECD\_O  
 ClientSampled :



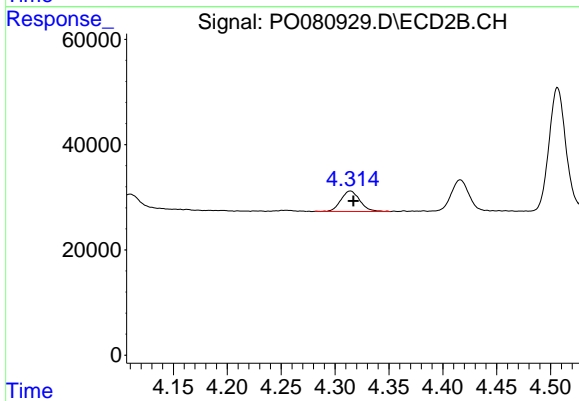
#7 AR-1016-5

R.T.: 5.824 min  
 Delta R.T.: -0.002 min  
 Response: 384838  
 Conc: 511.24 ng/ml



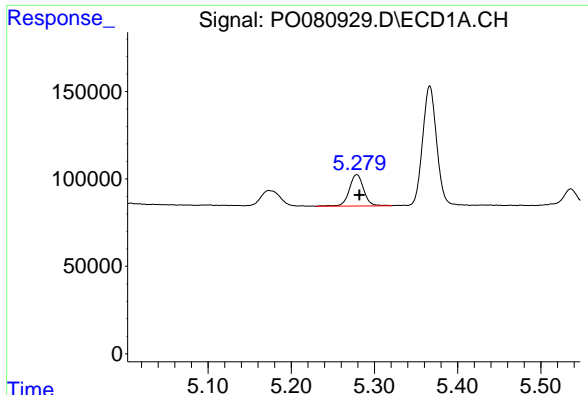
#8 AR-1221-1

R.T.: 5.173 min  
 Delta R.T.: -0.010 min  
 Response: 139039  
 Conc: 143.09 ng/ml



#8 AR-1221-1

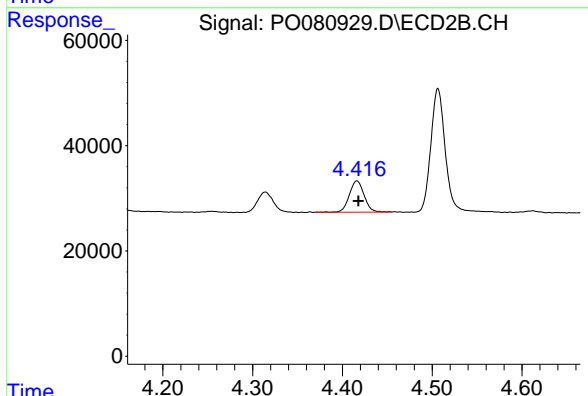
R.T.: 4.314 min  
 Delta R.T.: -0.003 min  
 Response: 47660  
 Conc: 145.60 ng/ml



#9 AR-1221-2

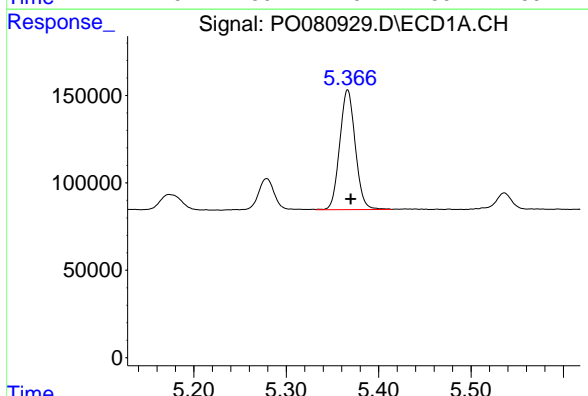
R.T.: 5.279 min  
 Delta R.T.: -0.003 min  
 Response: 217420  
 Conc: 295.76 ng/ml

Instrument :  
 ECD\_O  
 ClientSampleId :



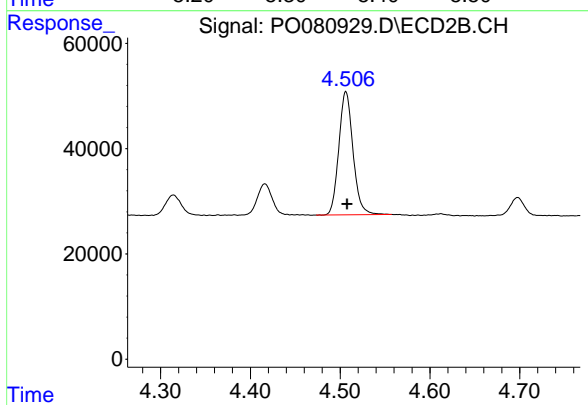
#9 AR-1221-2

R.T.: 4.416 min  
 Delta R.T.: -0.002 min  
 Response: 67720  
 Conc: 274.71 ng/ml



#10 AR-1221-3

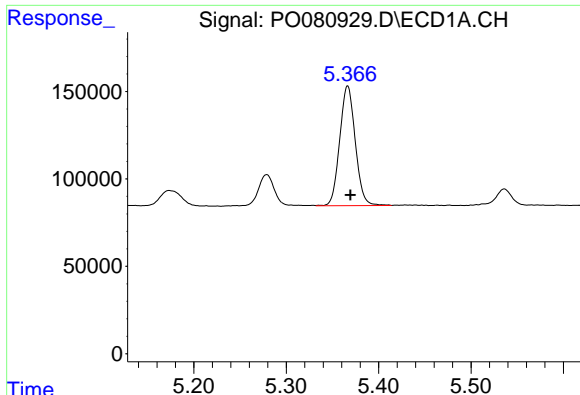
R.T.: 5.367 min  
 Delta R.T.: -0.003 min  
 Response: 800825  
 Conc: 351.80 ng/ml



#10 AR-1221-3

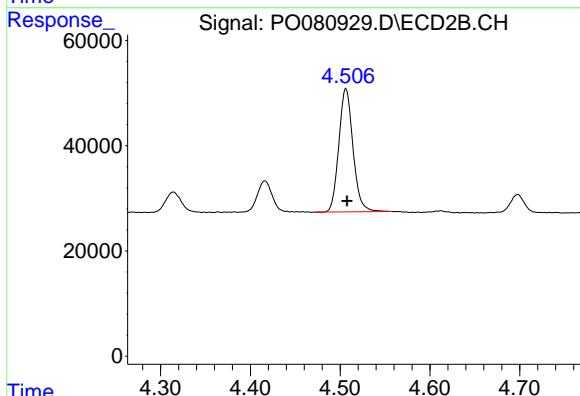
R.T.: 4.506 min  
 Delta R.T.: -0.001 min  
 Response: 257379  
 Conc: 328.59 ng/ml



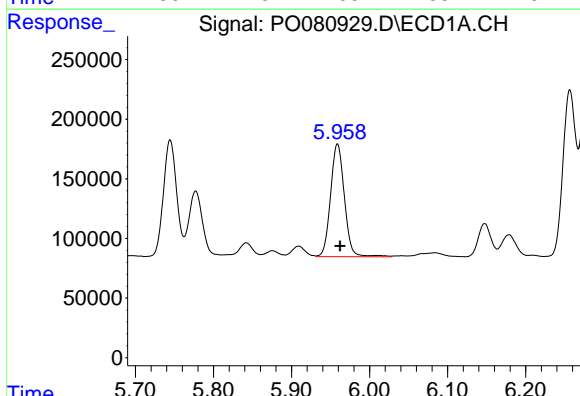


#11 AR-1232-1  
 R.T.: 5.367 min  
 Delta R.T.: -0.003 min  
 Response: 800825  
 Conc: 465.50 ng/ml

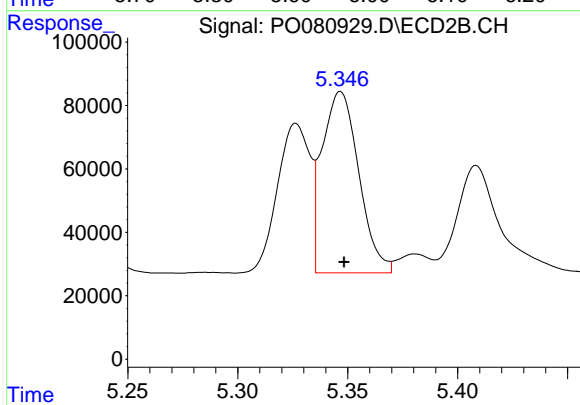
Instrument :  
 ECD\_O  
 ClientSampleId :



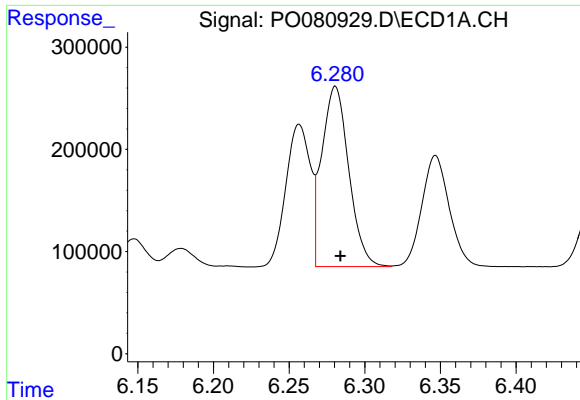
#11 AR-1232-1  
 R.T.: 4.506 min  
 Delta R.T.: -0.001 min  
 Response: 257379  
 Conc: 423.91 ng/ml



#12 AR-1232-2  
 R.T.: 5.959 min  
 Delta R.T.: -0.003 min  
 Response: 1165484  
 Conc: 1187.22 ng/ml



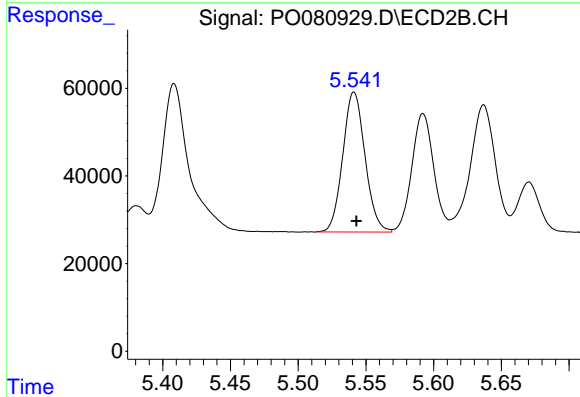
#12 AR-1232-2  
 R.T.: 5.347 min  
 Delta R.T.: -0.002 min  
 Response: 664686  
 Conc: 1084.42 ng/ml



#13 AR-1232-3

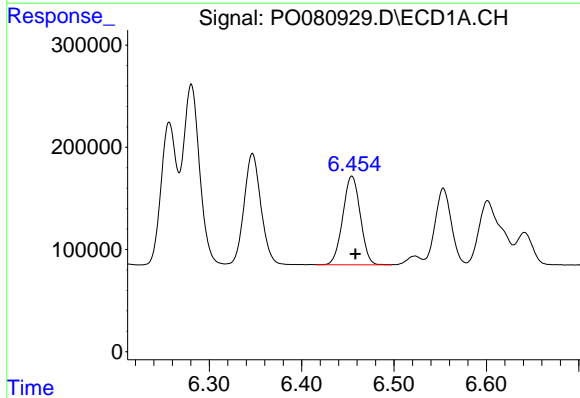
R.T.: 6.281 min  
 Delta R.T.: -0.003 min  
 Response: 2193410  
 Conc: 1211.84 ng/ml

Instrument :  
 ECD\_O  
 ClientSampleId :



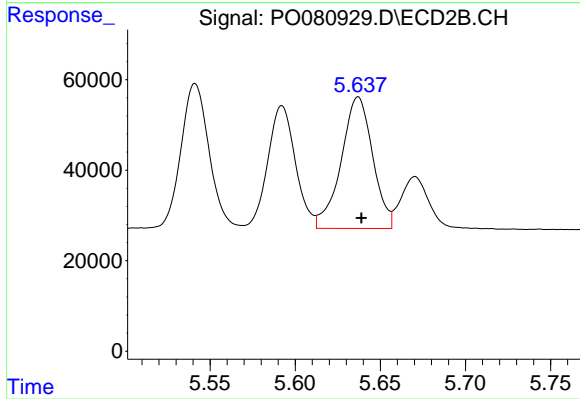
#13 AR-1232-3

R.T.: 5.541 min  
 Delta R.T.: -0.002 min  
 Response: 365788  
 Conc: 1126.86 ng/ml



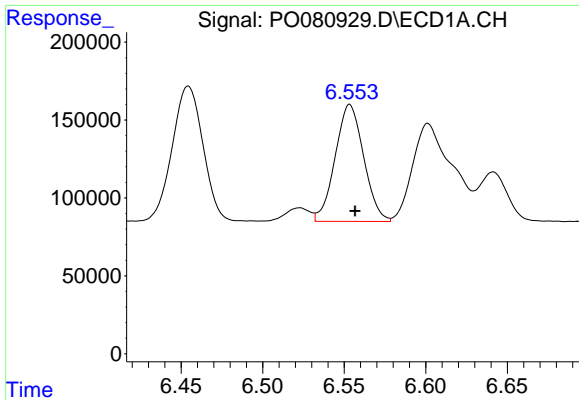
#14 AR-1232-4

R.T.: 6.454 min  
 Delta R.T.: -0.004 min  
 Response: 1138950  
 Conc: 1175.53 ng/ml



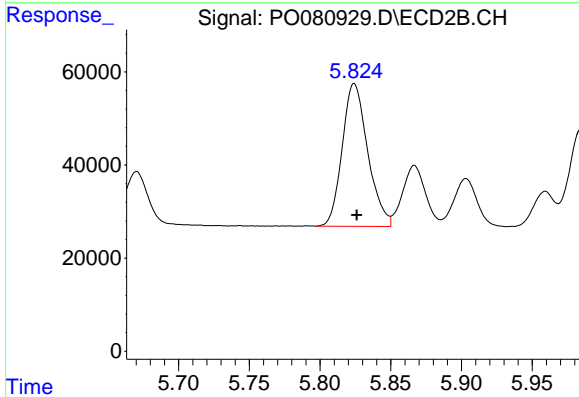
#14 AR-1232-4

R.T.: 5.637 min  
 Delta R.T.: -0.002 min  
 Response: 375744  
 Conc: 1245.90 ng/ml

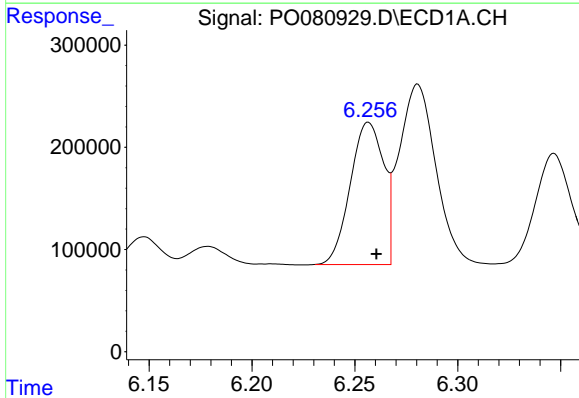


#15 AR-1232-5  
 R.T.: 6.553 min  
 Delta R.T.: -0.003 min  
 Response: 913441  
 Conc: 1363.63 ng/ml

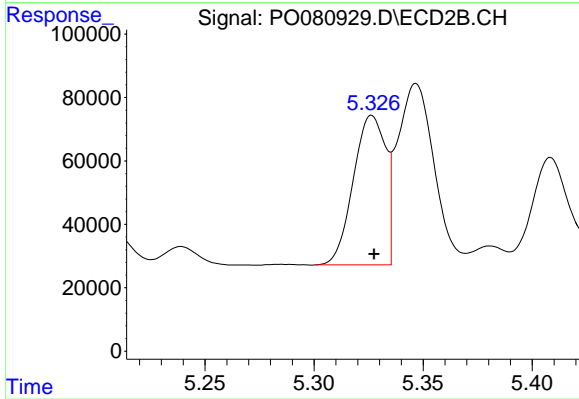
Instrument :  
 ECD\_O  
 ClientSampleId :



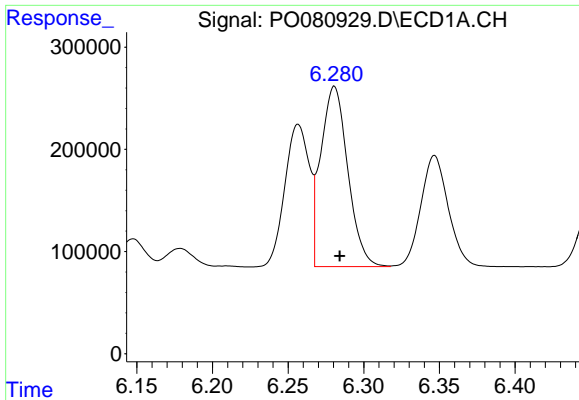
#15 AR-1232-5  
 R.T.: 5.824 min  
 Delta R.T.: -0.002 min  
 Response: 384838  
 Conc: 1156.68 ng/ml



#16 AR-1242-1  
 R.T.: 6.257 min  
 Delta R.T.: -0.004 min  
 Response: 1567333  
 Conc: 716.13 ng/ml

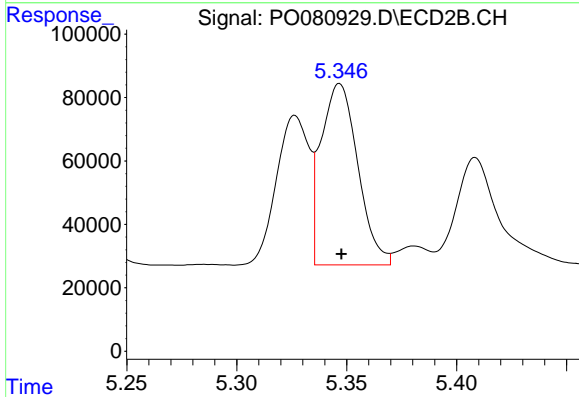


#16 AR-1242-1  
 R.T.: 5.326 min  
 Delta R.T.: -0.001 min  
 Response: 486968  
 Conc: 653.76 ng/ml

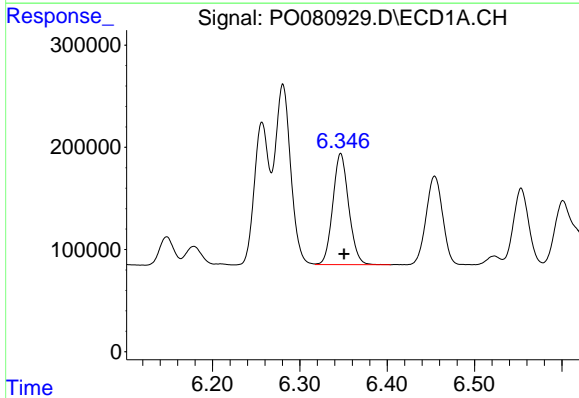


#17 AR-1242-2  
 R.T.: 6.281 min  
 Delta R.T.: -0.004 min  
 Response: 2193410  
 Conc: 717.07 ng/ml

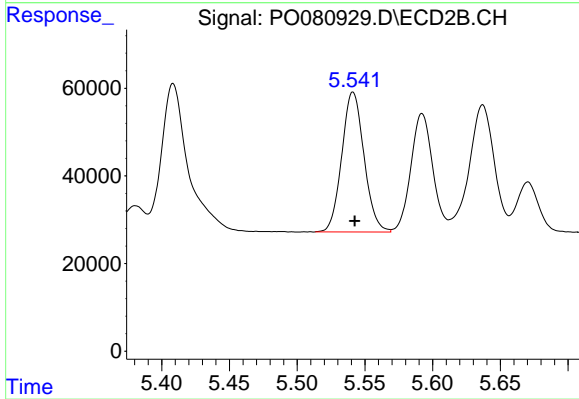
Instrument :  
 ECD\_O  
 ClientSampleId :



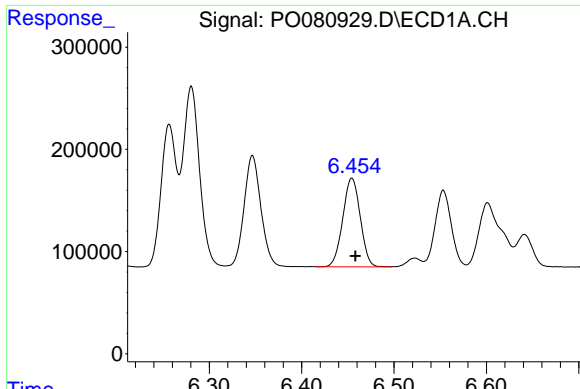
#17 AR-1242-2  
 R.T.: 5.347 min  
 Delta R.T.: 0.000 min  
 Response: 664686  
 Conc: 651.62 ng/ml



#18 AR-1242-3  
 R.T.: 6.347 min  
 Delta R.T.: -0.004 min  
 Response: 1377743  
 Conc: 719.86 ng/ml



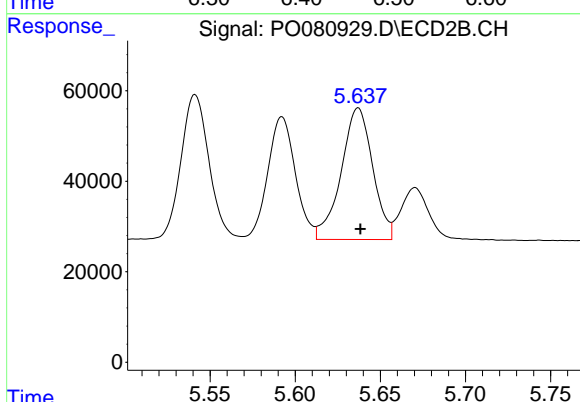
#18 AR-1242-3  
 R.T.: 5.541 min  
 Delta R.T.: -0.001 min  
 Response: 365788  
 Conc: 659.17 ng/ml



#19 AR-1242-4

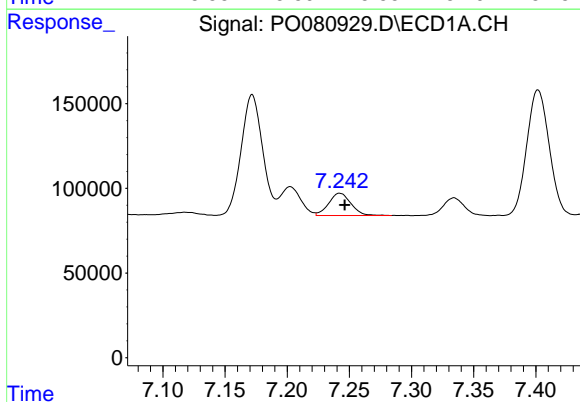
R.T.: 6.454 min  
 Delta R.T.: -0.004 min  
 Response: 1138950  
 Conc: 738.37 ng/ml

Instrument :  
 ECD\_O  
 ClientSampled :



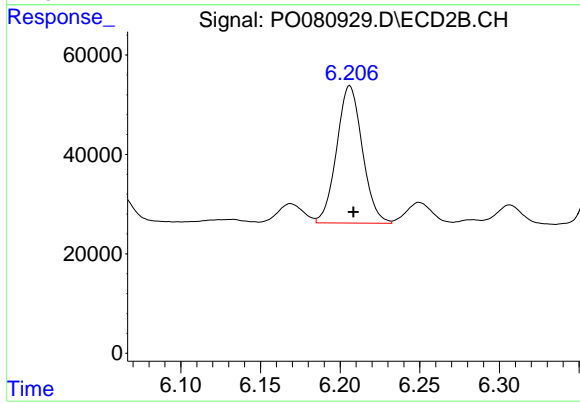
#19 AR-1242-4

R.T.: 5.637 min  
 Delta R.T.: -0.001 min  
 Response: 375744  
 Conc: 664.15 ng/ml



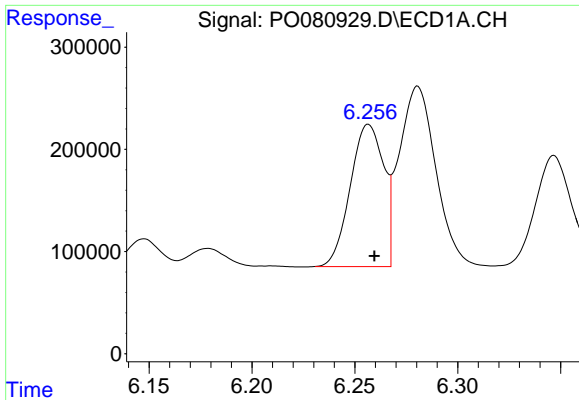
#20 AR-1242-5

R.T.: 7.242 min  
 Delta R.T.: -0.004 min  
 Response: 163794  
 Conc: 102.23 ng/ml



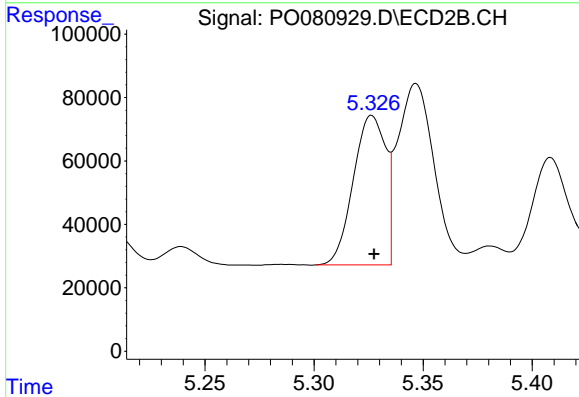
#20 AR-1242-5

R.T.: 6.206 min  
 Delta R.T.: -0.002 min  
 Response: 310090  
 Conc: 428.15 ng/ml

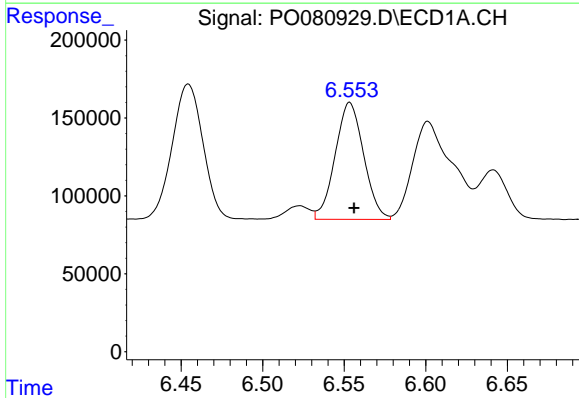


#21 AR-1248-1  
 R.T.: 6.257 min  
 Delta R.T.: -0.003 min  
 Response: 1567333  
 Conc: 908.39 ng/ml

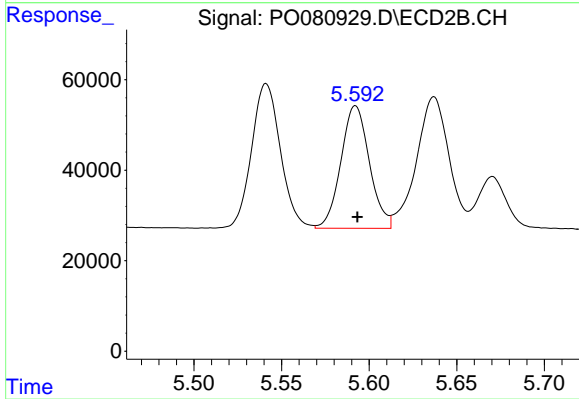
Instrument :  
 ECD\_O  
 ClientSampled :



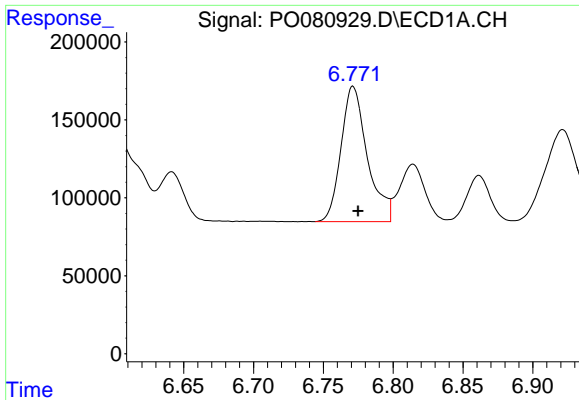
#21 AR-1248-1  
 R.T.: 5.326 min  
 Delta R.T.: 0.000 min  
 Response: 486968  
 Conc: 822.53 ng/ml



#22 AR-1248-2  
 R.T.: 6.553 min  
 Delta R.T.: -0.003 min  
 Response: 913441  
 Conc: 410.71 ng/ml



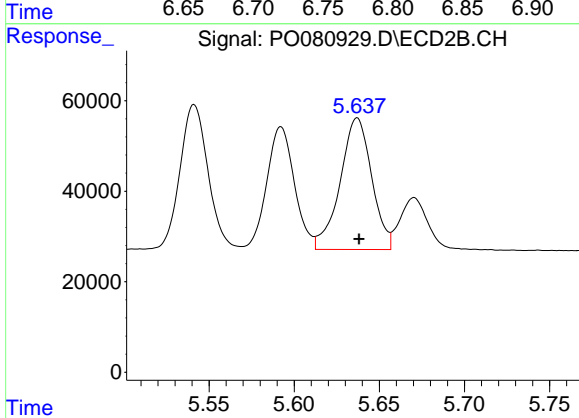
#22 AR-1248-2  
 R.T.: 5.592 min  
 Delta R.T.: -0.001 min  
 Response: 307144  
 Conc: 369.80 ng/ml



#23 AR-1248-3

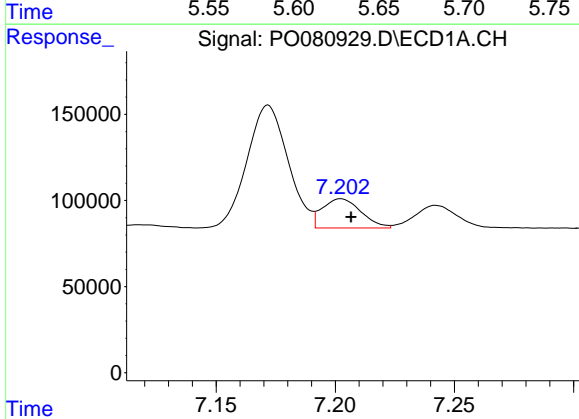
R.T.: 6.771 min  
 Delta R.T.: -0.004 min  
 Response: 1137428  
 Conc: 429.80 ng/ml

Instrument :  
 ECD\_O  
 ClientSampled :



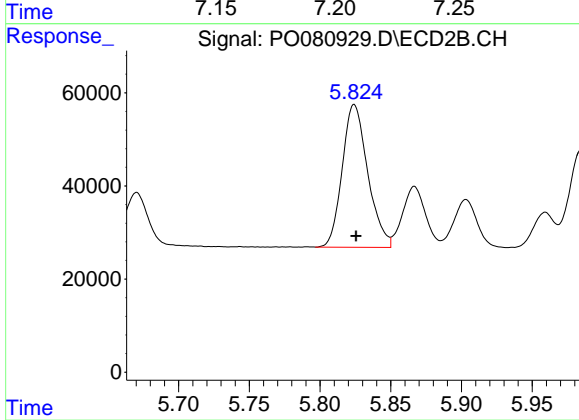
#23 AR-1248-3

R.T.: 5.637 min  
 Delta R.T.: -0.001 min  
 Response: 375744  
 Conc: 442.71 ng/ml



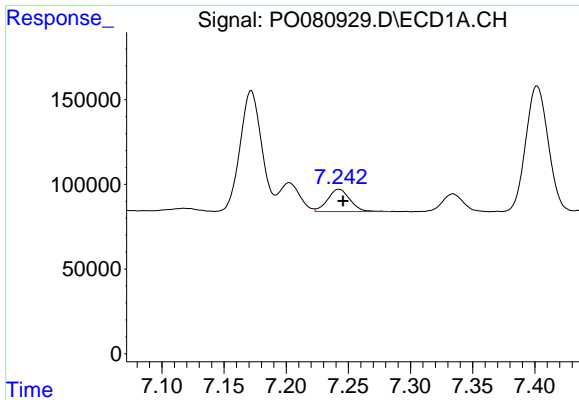
#24 AR-1248-4

R.T.: 7.202 min  
 Delta R.T.: -0.004 min  
 Response: 192338  
 Conc: 66.78 ng/ml



#24 AR-1248-4

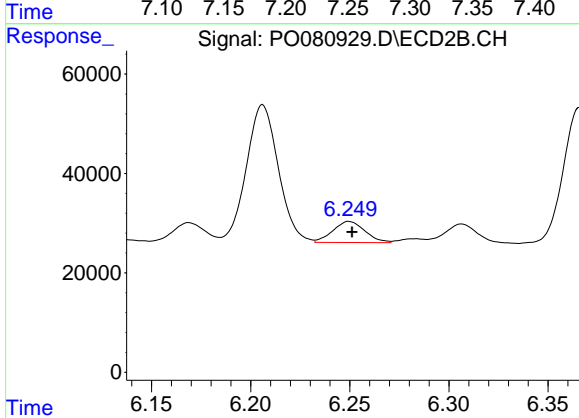
R.T.: 5.824 min  
 Delta R.T.: -0.001 min  
 Response: 384838  
 Conc: 389.24 ng/ml



#25 AR-1248-5

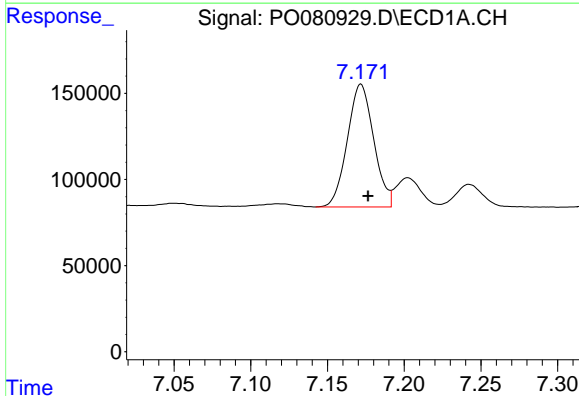
R.T.: 7.242 min  
 Delta R.T.: -0.003 min  
 Response: 163794  
 Conc: 59.56 ng/ml

Instrument :  
 ECD\_O  
 ClientSampled :



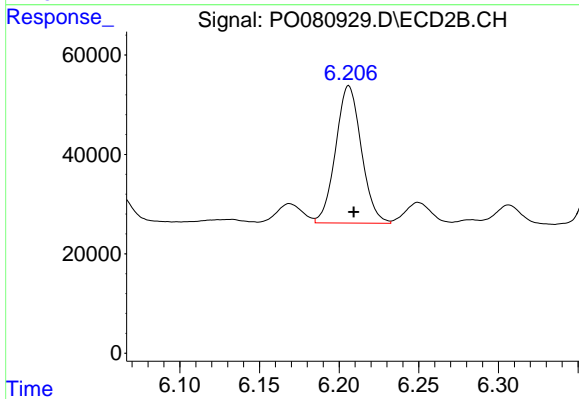
#25 AR-1248-5

R.T.: 6.250 min  
 Delta R.T.: -0.001 min  
 Response: 47984  
 Conc: 52.93 ng/ml



#26 AR-1254-1

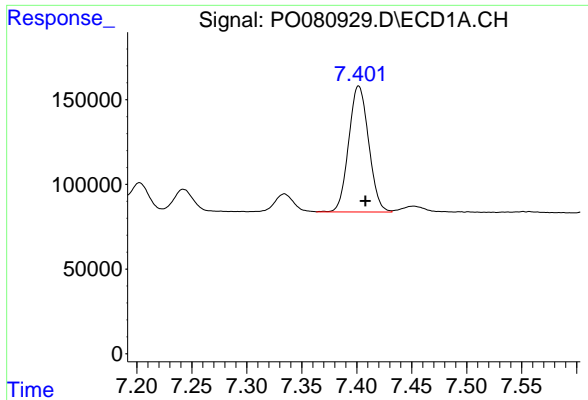
R.T.: 7.172 min  
 Delta R.T.: -0.005 min  
 Response: 855454  
 Conc: 264.70 ng/ml



#26 AR-1254-1

R.T.: 6.206 min  
 Delta R.T.: -0.003 min  
 Response: 310090  
 Conc: 196.03 ng/ml

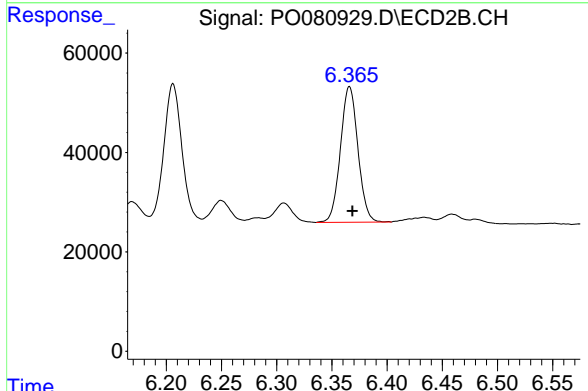




#27 AR-1254-2

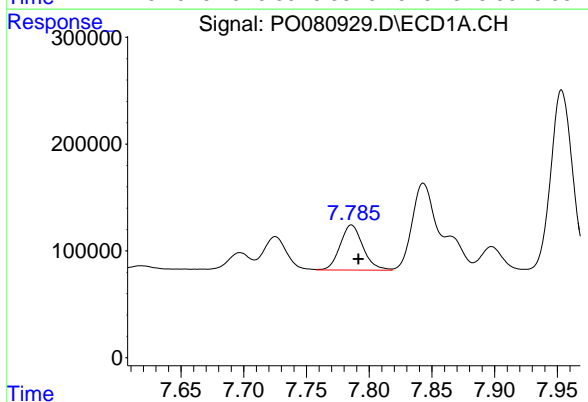
R.T.: 7.402 min  
 Delta R.T.: -0.006 min  
 Response: 939377  
 Conc: 188.75 ng/ml

Instrument :  
 ECD\_O  
 ClientSampleId :



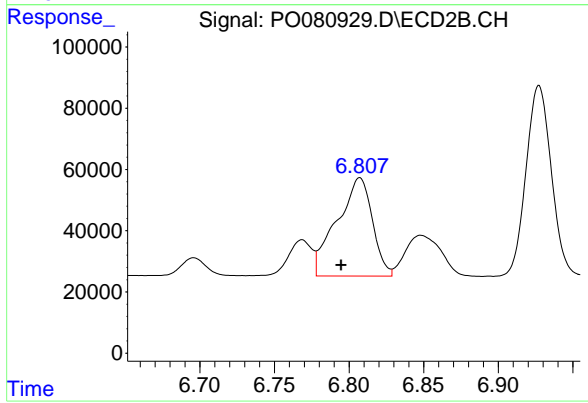
#27 AR-1254-2

R.T.: 6.366 min  
 Delta R.T.: -0.003 min  
 Response: 301206  
 Conc: 208.34 ng/ml



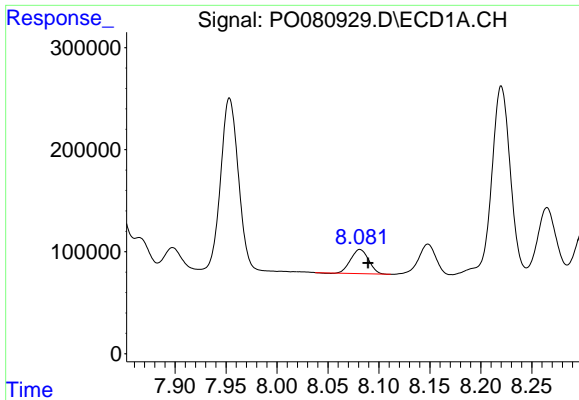
#28 AR-1254-3

R.T.: 7.786 min  
 Delta R.T.: -0.006 min  
 Response: 533683  
 Conc: 105.55 ng/ml



#28 AR-1254-3

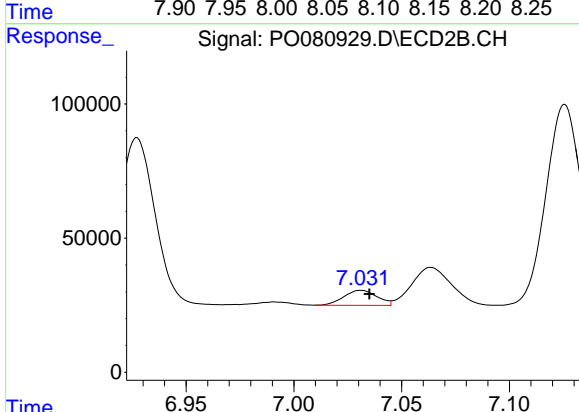
R.T.: 6.807 min  
 Delta R.T.: 0.013 min  
 Response: 531360  
 Conc: 237.50 ng/ml



#29 AR-1254-4

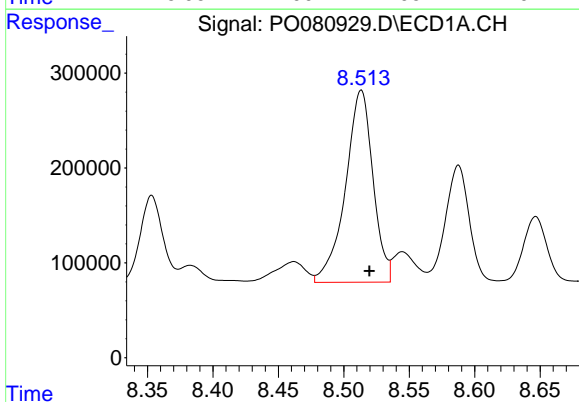
R.T.: 8.081 min  
 Delta R.T.: -0.008 min  
 Response: 289009  
 Conc: 77.34 ng/ml

Instrument :  
 ECD\_O  
 ClientSampled :



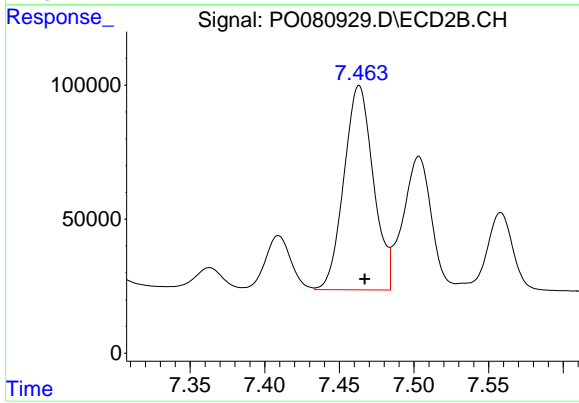
#29 AR-1254-4

R.T.: 7.031 min  
 Delta R.T.: -0.004 min  
 Response: 60117  
 Conc: 42.47 ng/ml



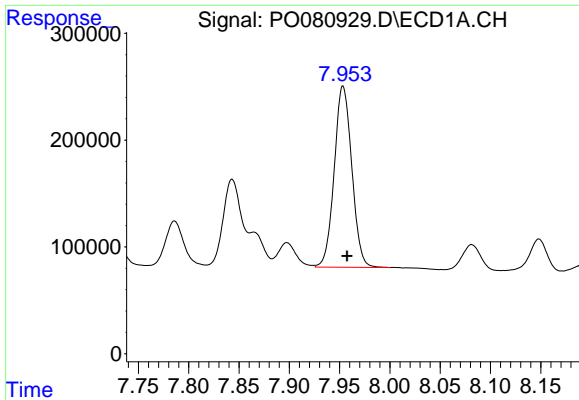
#30 AR-1254-5

R.T.: 8.513 min  
 Delta R.T.: -0.006 min  
 Response: 2966633  
 Conc: 717.17 ng/ml



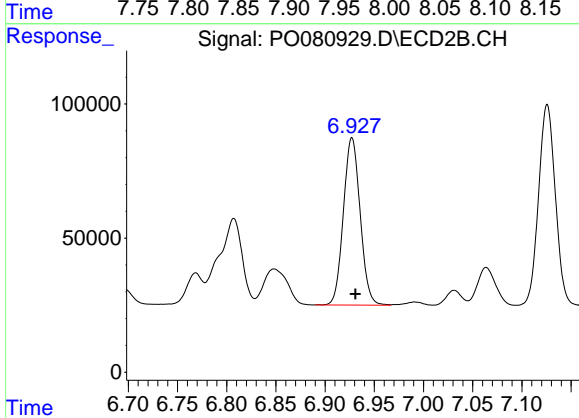
#30 AR-1254-5

R.T.: 7.463 min  
 Delta R.T.: -0.004 min  
 Response: 1045417  
 Conc: 495.47 ng/ml

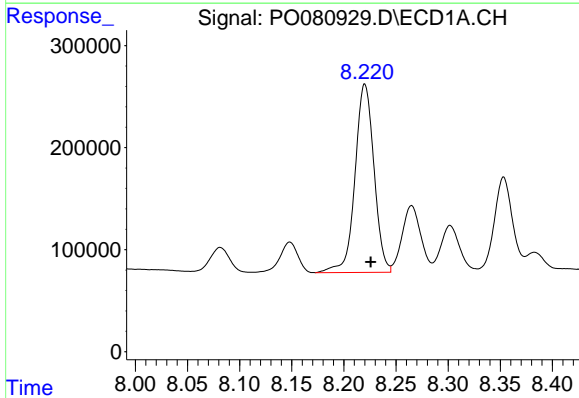


#31 AR-1260-1  
 R.T.: 7.953 min  
 Delta R.T.: -0.004 min  
 Response: 2061309  
 Conc: 593.00 ng/ml

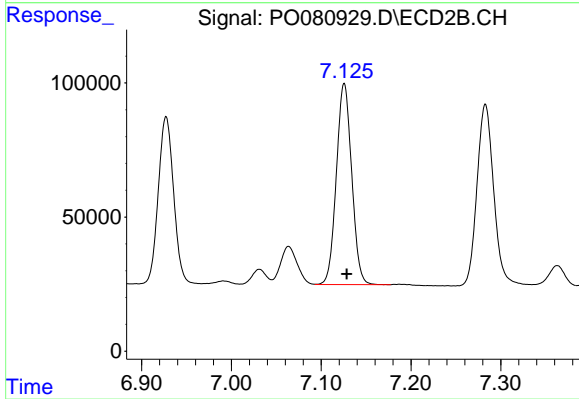
Instrument :  
 ECD\_O  
 ClientSampled :



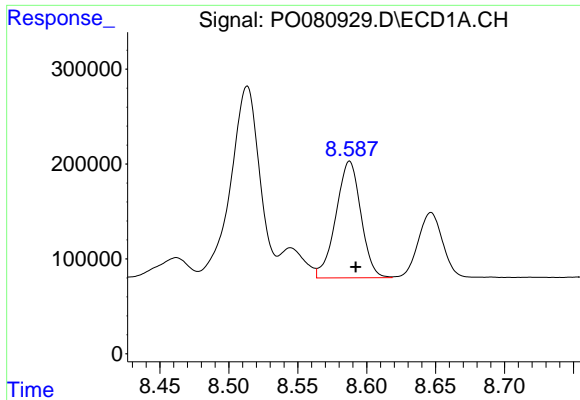
#31 AR-1260-1  
 R.T.: 6.927 min  
 Delta R.T.: -0.003 min  
 Response: 740005  
 Conc: 504.23 ng/ml



#32 AR-1260-2  
 R.T.: 8.220 min  
 Delta R.T.: -0.006 min  
 Response: 2338641  
 Conc: 524.75 ng/ml



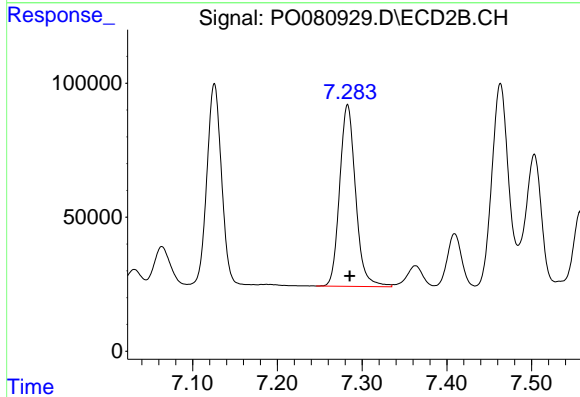
#32 AR-1260-2  
 R.T.: 7.126 min  
 Delta R.T.: -0.003 min  
 Response: 890292  
 Conc: 507.20 ng/ml



#33 AR-1260-3

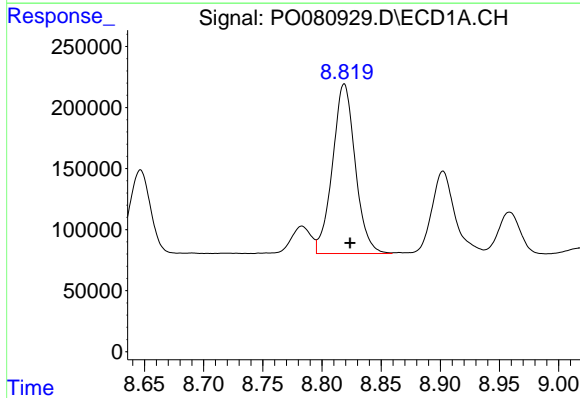
R.T.: 8.588 min  
 Delta R.T.: -0.004 min  
 Response: 1551804  
 Conc: 591.34 ng/ml

Instrument :  
 ECD\_O  
 ClientSampleId :



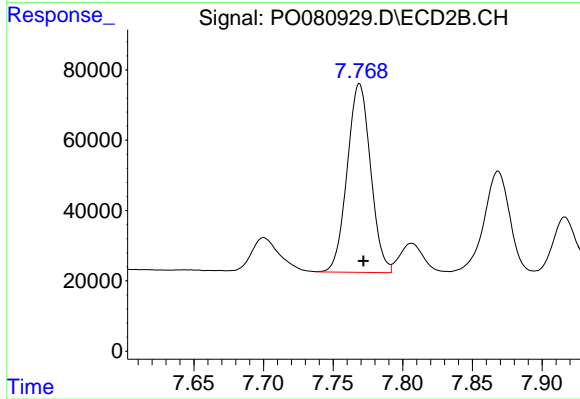
#33 AR-1260-3

R.T.: 7.283 min  
 Delta R.T.: -0.002 min  
 Response: 886389  
 Conc: 484.19 ng/ml



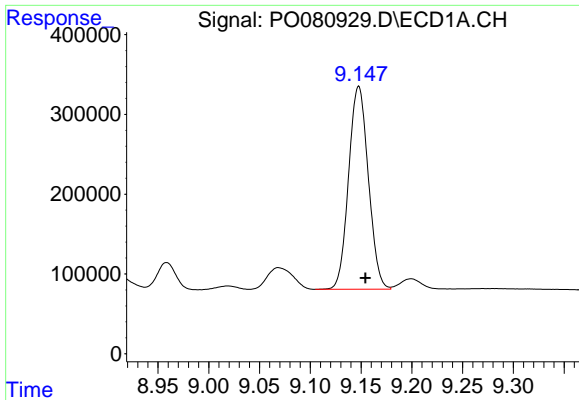
#34 AR-1260-4

R.T.: 8.819 min  
 Delta R.T.: -0.005 min  
 Response: 1860646  
 Conc: 581.26 ng/ml



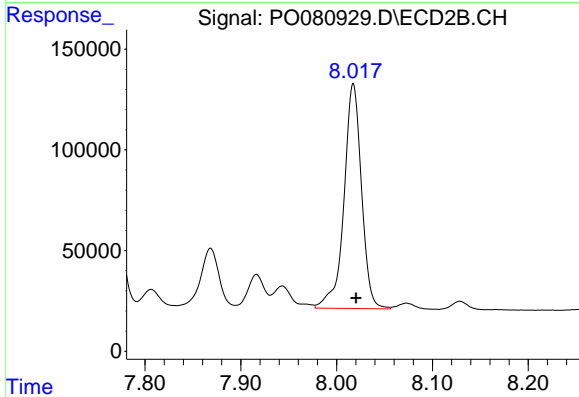
#34 AR-1260-4

R.T.: 7.769 min  
 Delta R.T.: -0.003 min  
 Response: 628150  
 Conc: 531.70 ng/ml

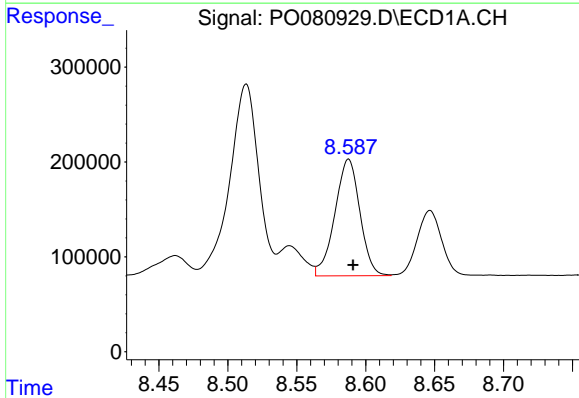


#35 AR-1260-5  
 R.T.: 9.148 min  
 Delta R.T.: -0.006 min  
 Response: 3439551  
 Conc: 574.54 ng/ml

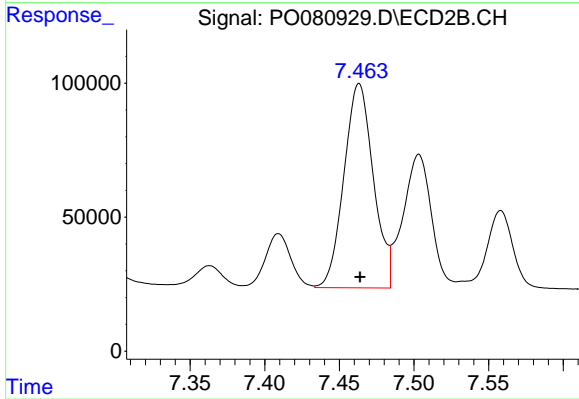
Instrument :  
 ECD\_O  
 ClientSampleId :



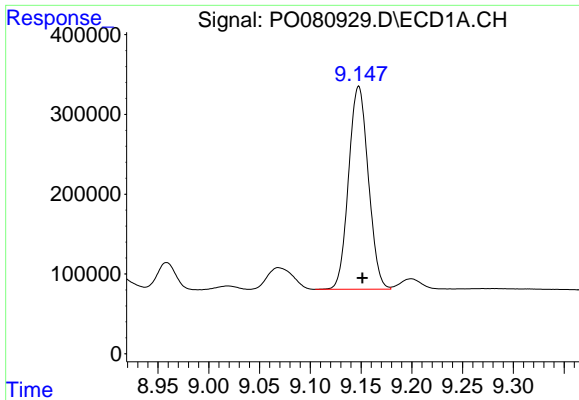
#35 AR-1260-5  
 R.T.: 8.017 min  
 Delta R.T.: -0.003 min  
 Response: 1418924  
 Conc: 501.25 ng/ml



#36 AR-1262-1  
 R.T.: 8.588 min  
 Delta R.T.: -0.003 min  
 Response: 1551804  
 Conc: 348.25 ng/ml

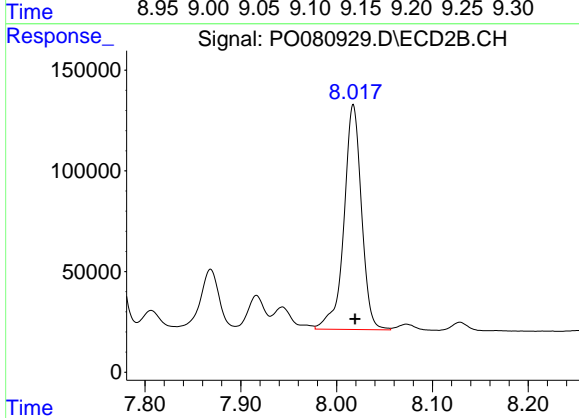


#36 AR-1262-1  
 R.T.: 7.463 min  
 Delta R.T.: 0.000 min  
 Response: 1045417  
 Conc: 984.29 ng/ml

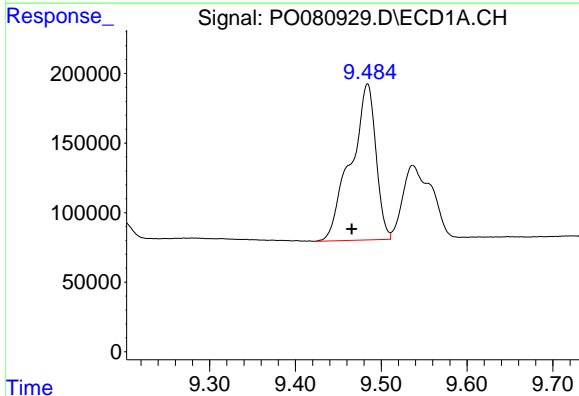


#37 AR-1262-2  
 R.T.: 9.148 min  
 Delta R.T.: -0.004 min  
 Response: 3439551  
 Conc: 448.85 ng/ml

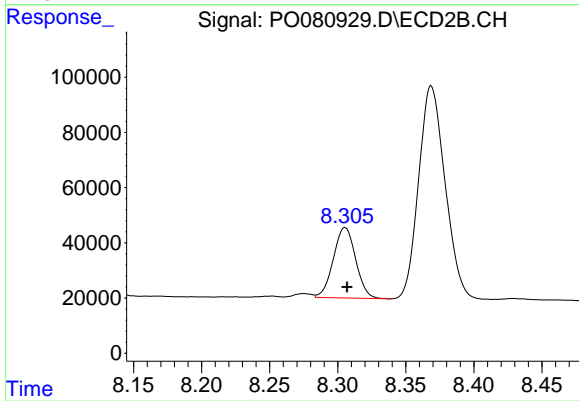
Instrument :  
 ECD\_O  
 ClientSampleId :



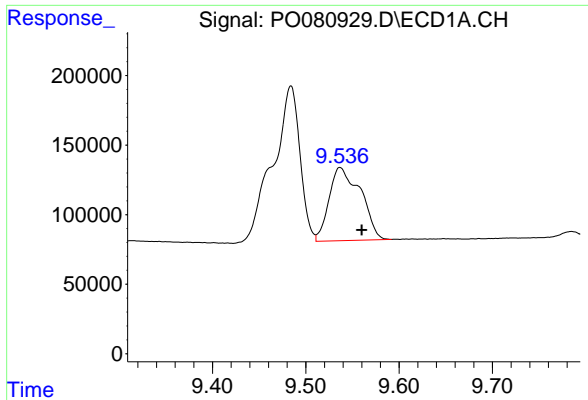
#37 AR-1262-2  
 R.T.: 8.017 min  
 Delta R.T.: -0.002 min  
 Response: 1418924  
 Conc: 431.12 ng/ml



#38 AR-1262-3  
 R.T.: 9.484 min  
 Delta R.T.: 0.019 min  
 Response: 2276142  
 Conc: 667.77 ng/ml

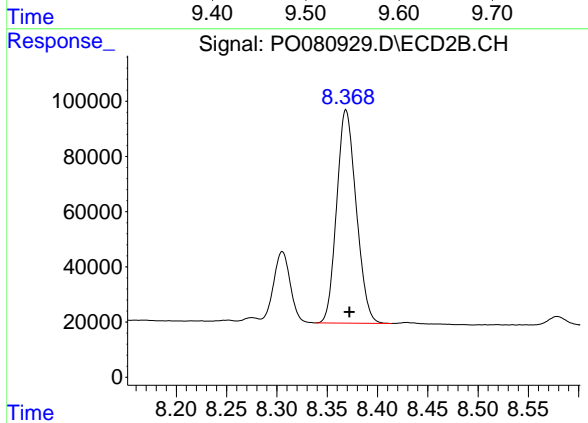


#38 AR-1262-3  
 R.T.: 8.305 min  
 Delta R.T.: -0.001 min  
 Response: 291117  
 Conc: 217.22 ng/ml

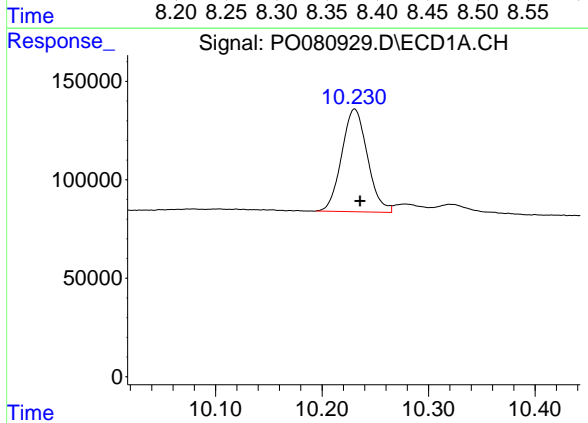


#39 AR-1262-4  
 R.T.: 9.537 min  
 Delta R.T.: -0.023 min  
 Response: 1237580  
 Conc: 591.04 ng/ml

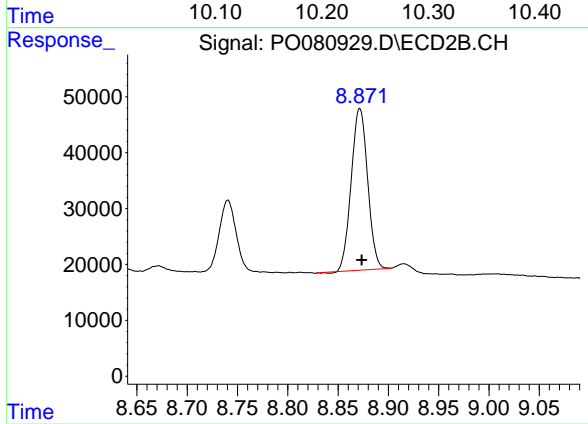
Instrument :  
 ECD\_O  
 ClientSampled :



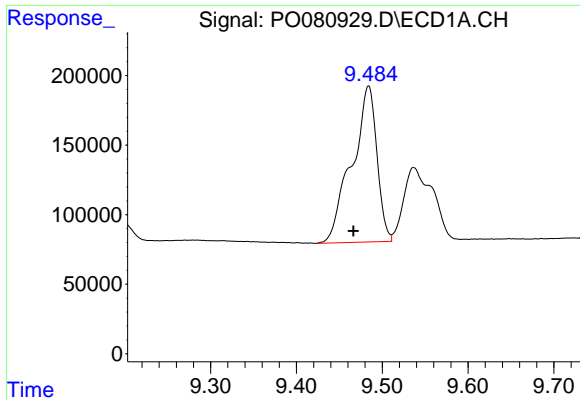
#39 AR-1262-4  
 R.T.: 8.369 min  
 Delta R.T.: -0.004 min  
 Response: 1044499  
 Conc: 440.30 ng/ml



#40 AR-1262-5  
 R.T.: 10.231 min  
 Delta R.T.: -0.005 min  
 Response: 875407  
 Conc: 315.89 ng/ml



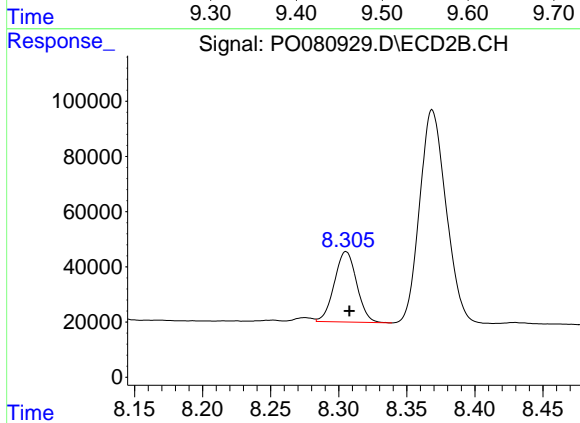
#40 AR-1262-5  
 R.T.: 8.872 min  
 Delta R.T.: -0.002 min  
 Response: 328210  
 Conc: 283.55 ng/ml



#41 AR-1268-1

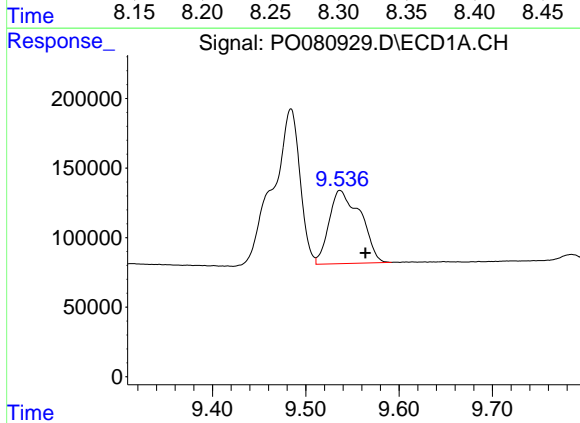
R.T.: 9.484 min  
 Delta R.T.: 0.018 min  
 Response: 2276142  
 Conc: 246.60 ng/ml

Instrument :  
 ECD\_O  
 ClientSampled :



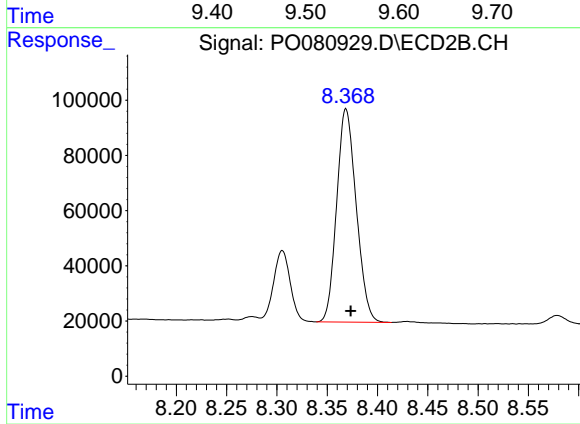
#41 AR-1268-1

R.T.: 8.305 min  
 Delta R.T.: -0.002 min  
 Response: 291117  
 Conc: 77.04 ng/ml



#42 AR-1268-2

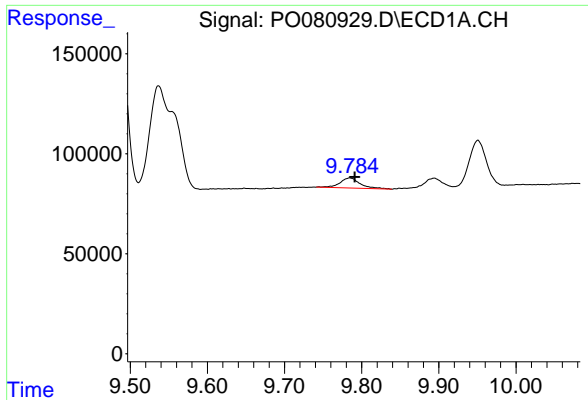
R.T.: 9.537 min  
 Delta R.T.: -0.027 min  
 Response: 1237580  
 Conc: 144.75 ng/ml



#42 AR-1268-2

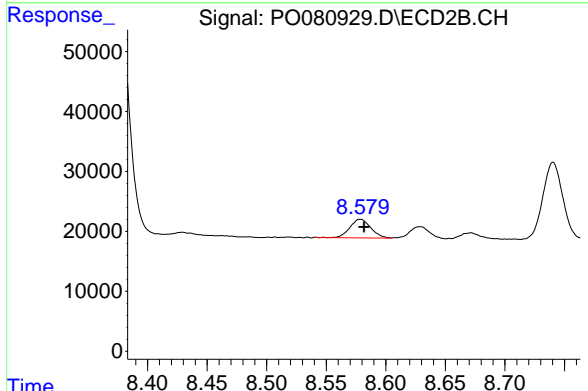
R.T.: 8.369 min  
 Delta R.T.: -0.005 min  
 Response: 1044499  
 Conc: 307.74 ng/ml



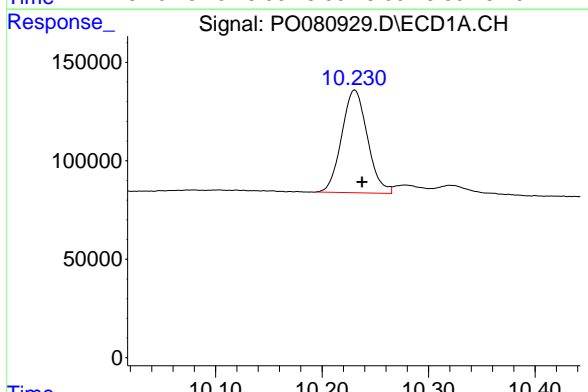


#43 AR-1268-3  
 R.T.: 9.785 min  
 Delta R.T.: -0.007 min  
 Response: 92314  
 Conc: 12.97 ng/ml

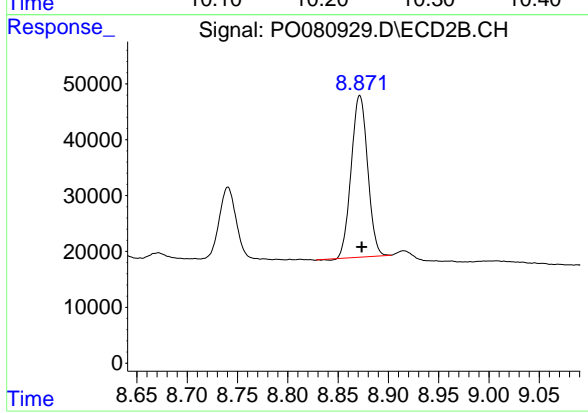
Instrument :  
 ECD\_O  
 ClientSampleId :



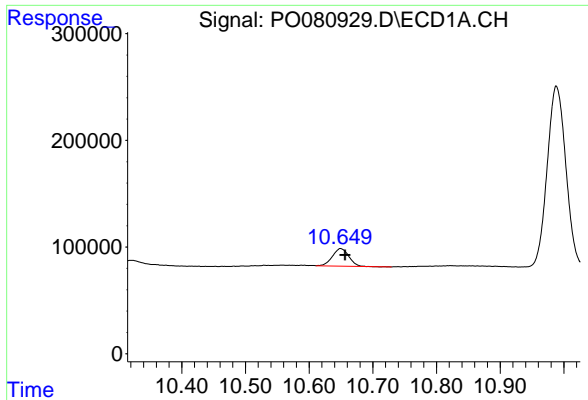
#43 AR-1268-3  
 R.T.: 8.579 min  
 Delta R.T.: -0.003 min  
 Response: 38003  
 Conc: 12.87 ng/ml



#44 AR-1268-4  
 R.T.: 10.231 min  
 Delta R.T.: -0.007 min  
 Response: 875407  
 Conc: 278.03 ng/ml

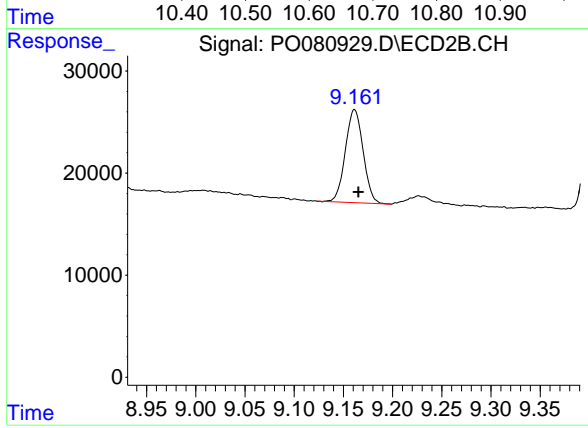


#44 AR-1268-4  
 R.T.: 8.872 min  
 Delta R.T.: -0.002 min  
 Response: 328210  
 Conc: 249.43 ng/ml



#45 AR-1268-5  
 R.T.: 10.649 min  
 Delta R.T.: -0.007 min  
 Response: 294944  
 Conc: 13.08 ng/ml

Instrument :  
 ECD\_O  
 ClientSampleId :



#45 AR-1268-5  
 R.T.: 9.161 min  
 Delta R.T.: -0.004 min  
 Response: 114941  
 Conc: 13.52 ng/ml