

Data Path : Z:\pestpcbsrv\HPCHEM1\ECD\_0\Data\P0090324\  
 Data File : P0106128.D  
 Signal(s) : Signal #1: ECD1A.ch Signal #2: ECD2B.ch  
 Acq On : 04 Sep 2024 04:04  
 Operator : YP/AJ  
 Sample : P3813-01  
 Misc :  
 ALS Vial : 39 Sample Multiplier: 1

Instrument :  
 ECD\_0  
 ClientSampleId :  
 TR-04-083024

Integration File signal 1: autoint1.e  
 Integration File signal 2: autoint2.e  
 Quant Time: Sep 04 04:28:22 2024  
 Quant Method : Z:\pestpcbsrv\HPCHEM1\ECD\_0\methods\P0082624.M  
 Quant Title : GC EXTRACTABLES  
 QLast Update : Tue Aug 27 06:50:58 2024  
 Response via : Initial Calibration  
 Integrator: ChemStation

Volume Inj. : 2 µl  
 Signal #1 Phase : ZB-MR1 Signal #2 Phase: ZB-MR2  
 Signal #1 Info : 30Mx0.32mmx 0.50µ Signal #2 Info : 30M x 0.32mm x 0.25µm

Compound	RT#1	RT#2	Resp#1	Resp#2	ng/ml	ng/ml
-----						
System Monitoring Compounds						
1) SA Tetrachlo...	4.452	3.718	131.7E6	51182799	14.437	18.944 #
2) SA Decachlor...	10.189	8.747	87765168	31848603	16.172	14.589
Target Compounds						
3) L1 AR-1016-1	5.618	4.811	158201	1588830	0.501	16.619 #
4) L1 AR-1016-2	5.618	4.811	158201	1588830	0.360	12.520 #
5) L1 AR-1016-3	5.681	4.999	5466828	746204	20.334	10.667 #
6) L1 AR-1016-4	5.776	5.047	-171549	1514254	N.D.	28.159 #
7) L1 AR-1016-5	6.099	5.251	57350	479329	0.270	6.966 #
8) L2 AR-1221-1	4.657	3.911	3817845	331798	34.682	10.874 #
9) L2 AR-1221-2	4.757	4.021	2430979	715936	28.920	31.325
10) L2 AR-1221-3	4.817	4.095	130882	211577	0.541	2.965 #
11) L3 AR-1232-1	4.817	4.095	130882	211577	0.646	3.602 #
12) L3 AR-1232-2	5.352	4.811	3040655	1588830	27.987	28.135
13) L3 AR-1232-3	5.618	4.999	158201	746204	0.802	24.151 #
14) L3 AR-1232-4	5.776	5.113	-171549	1035680	N.D.	38.331 #
15) L3 AR-1232-5	5.891	5.251	-40181	479329	N.D.	16.212 #
16) L4 AR-1242-1	5.618	4.857	158201	206773	0.654	2.907 #
17) L4 AR-1242-2	5.618	4.857	158201	206773	0.476	2.207 #
18) L4 AR-1242-3	5.681	5.047	5466828	1514254	26.612	29.694
19) L4 AR-1242-4	5.776	5.113	-171549	1035680	N.D.	20.201 #
20) L4 AR-1242-5	6.522	5.632	403661	533114	2.369	8.248 #
21) L5 AR-1248-1	5.618	4.811	158201	1588830	0.842	28.367 #
22) L5 AR-1248-2	5.891	5.047	-40181	1514254	N.D.	20.341 #
23) L5 AR-1248-3	6.099	5.113	57350	1035680	0.201	13.186 #
24) L5 AR-1248-4	6.497	5.251	1028874	479329	3.263	5.148 #
25) L5 AR-1248-5	6.522	5.667	403661	502368	1.330	5.482 #
26) L6 AR-1254-1	6.469	5.613	3044707	775085	9.863	5.745 #
27) L6 AR-1254-2	6.683	5.761	1658569	1708972	3.600	14.081 #
28) L6 AR-1254-3	7.059	6.180	5448953	2824590	11.534	14.653 #
29) L6 AR-1254-4	7.336	6.410	1151701	154641	3.306	1.275 #
30) L6 AR-1254-5	7.771	6.807	14373288	6842691	39.362	38.701
31) L7 AR-1260-1	7.210	6.293	2280540	356877	6.355	2.709 #
32) L7 AR-1260-2	7.458	6.482	5140099	1769617	12.236	10.783
33) L7 AR-1260-3	7.830	6.642	1026696	5676292	3.839	33.634 #
34) L7 AR-1260-4	8.069	7.147	2538889	217937	8.190	1.967 #
35) L7 AR-1260-5	8.374	7.343	1837580	1323535	3.303	4.878 #
36) L8 AR-1262-1	7.771	6.807	14373288	6842691	49.489	70.981 #
37) L8 AR-1262-2	8.374	7.080	1837580	1045154	2.556	6.728 #
38) L8 AR-1262-3	8.678	7.671	1349429	168794	2.800	1.483 #
39) L8 AR-1262-4	8.772	7.690	164014	244206	0.457	1.025 #
40) L8 AR-1262-5	9.375f	8.228	108151	271099	0.421	2.473 #
41) L9 AR-1268-1	8.678	7.671	1349429	168794	1.649	0.491 #

Data Path : Z:\pestpcbsrv\HPCHEM1\ECD\_0\Data\P0090324\  
 Data File : P0106128.D  
 Signal(s) : Signal #1: ECD1A.ch Signal #2: ECD2B.ch  
 Acq On : 04 Sep 2024 04:04  
 Operator : YP/AJ  
 Sample : P3813-01  
 Misc :  
 ALS Vial : 39 Sample Multiplier: 1

Instrument :  
 ECD\_0  
 ClientSampleId :  
 TR-04-083024

Integration File signal 1: autoint1.e  
 Integration File signal 2: autoint2.e  
 Quant Time: Sep 04 04:28:22 2024  
 Quant Method : Z:\pestpcbsrv\HPCHEM1\ECD\_0\methods\P0082624.M  
 Quant Title : GC EXTRACTABLES  
 QLast Update : Tue Aug 27 06:50:58 2024  
 Response via : Initial Calibration  
 Integrator: ChemStation

Volume Inj. : 2 µl  
 Signal #1 Phase : ZB-MR1 Signal #2 Phase: ZB-MR2  
 Signal #1 Info : 30Mx0.32mmx 0.50µ Signal #2 Info : 30M x 0.32mm x 0.25µm

	Compound	RT#1	RT#2	Resp#1	Resp#2	ng/ml	ng/ml
42)	L9 AR-1268-2	8.772	7.690	164014	244206	0.224	0.758 #
43)	L9 AR-1268-3	8.962f	7.912	595220	95476	0.968	0.356 #
44)	L9 AR-1268-4	9.375f	8.228	108151	271099	0.400	2.394 #
45)	L9 AR-1268-5	9.847	8.482	3837199	124913	1.902	0.146 #

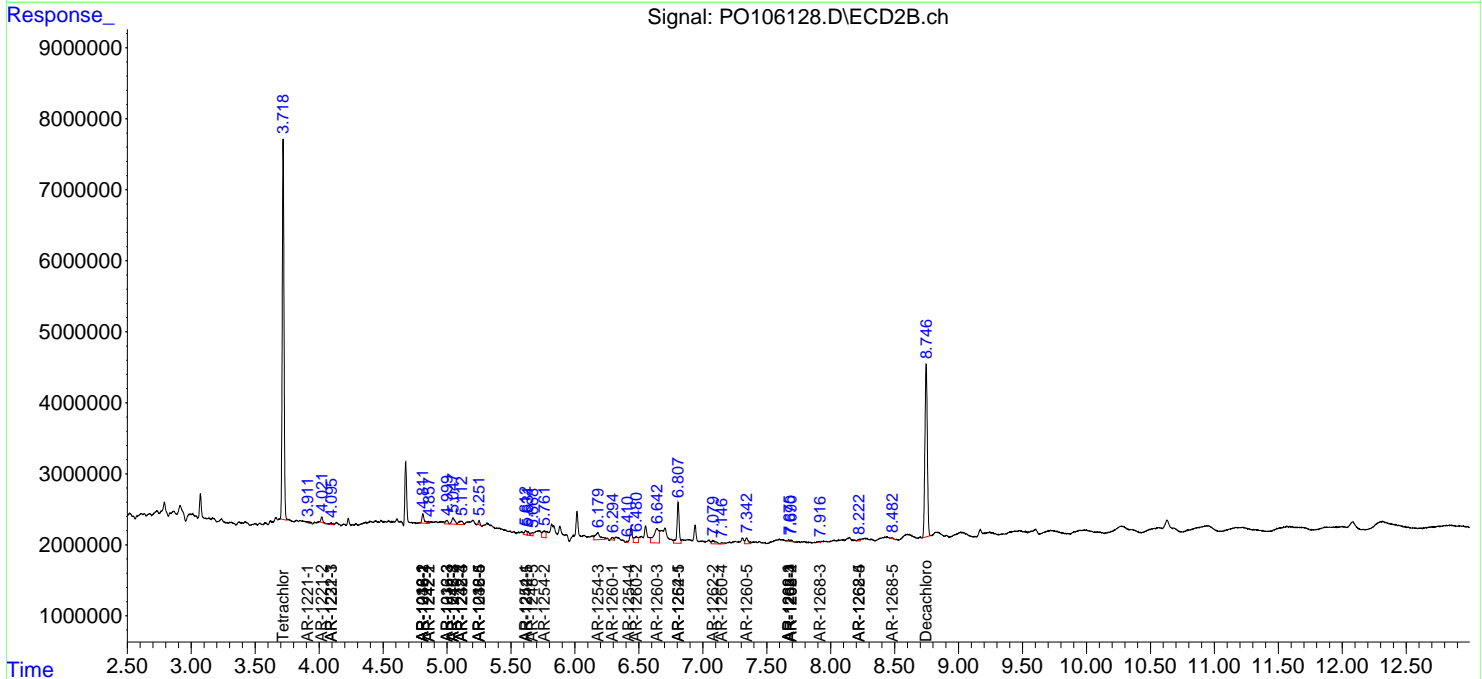
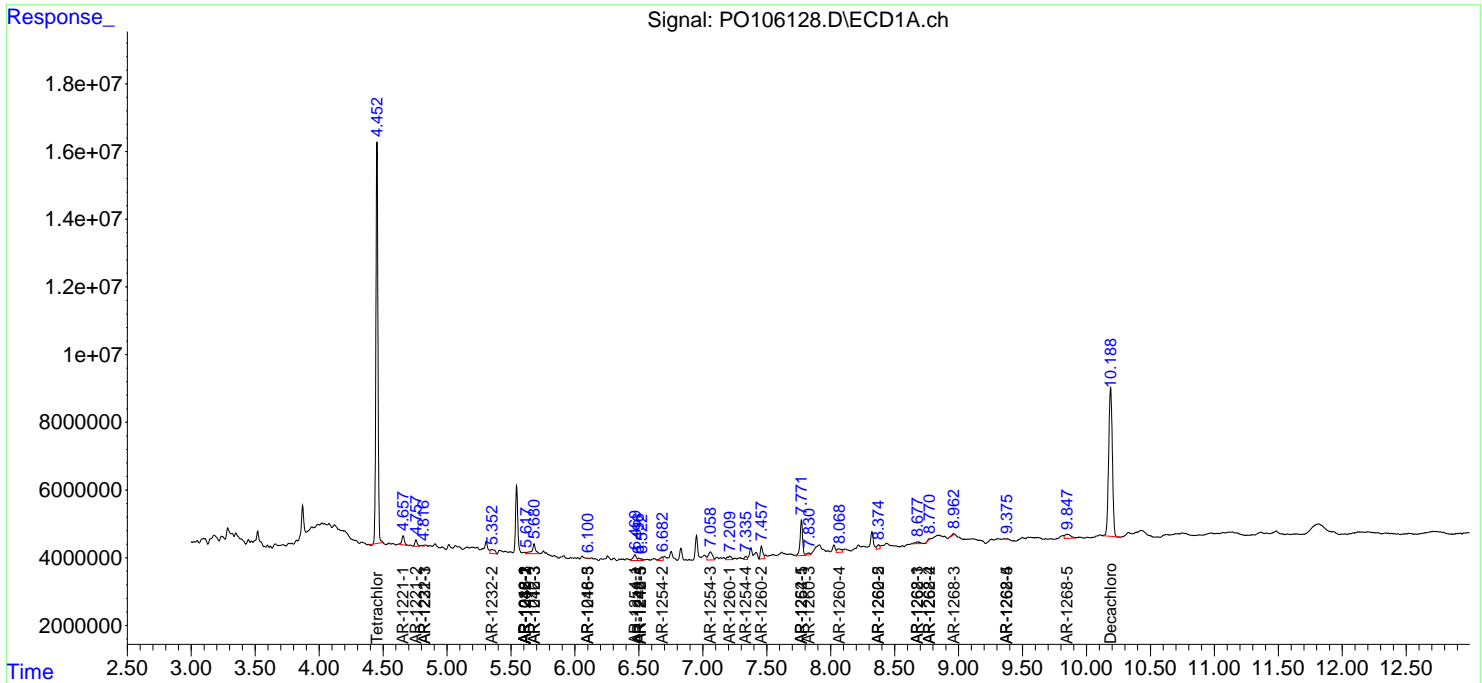
(f)=RT Delta > 1/2 Window (#)=Amounts differ by > 25% (m)=manual int.

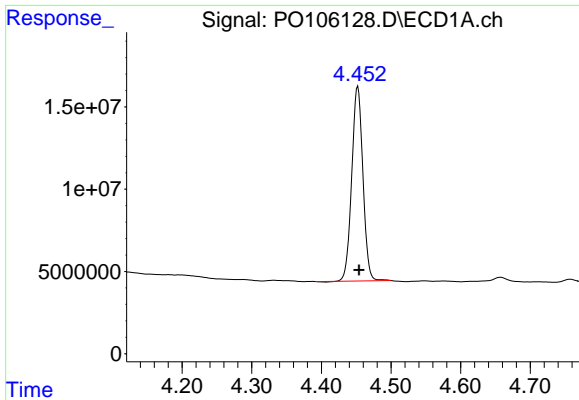
Data Path : Z:\pestpcbsrv\HPCHEM1\ECD\_O\Data\PO090324\  
 Data File : PO106128.D  
 Signal(s) : Signal #1: ECD1A.ch Signal #2: ECD2B.ch  
 Acq On : 04 Sep 2024 04:04  
 Operator : YP/AJ  
 Sample : P3813-01  
 Misc :  
 ALS Vial : 39 Sample Multiplier: 1

Instrument :  
 ECD\_O  
 ClientSampleId :  
 TR-04-083024

Integration File signal 1: autoint1.e  
 Integration File signal 2: autoint2.e  
 Quant Time: Sep 04 04:28:22 2024  
 Quant Method : Z:\pestpcbsrv\HPCHEM1\ECD\_O\methods\PO082624.M  
 Quant Title : GC EXTRACTABLES  
 QLast Update : Tue Aug 27 06:50:58 2024  
 Response via : Initial Calibration  
 Integrator: ChemStation

Volume Inj. : 2 µl  
 Signal #1 Phase : ZB-MR1 Signal #2 Phase: ZB-MR2  
 Signal #1 Info : 30Mx0.32mmx 0.50µ Signal #2 Info : 30M x 0.32mm x 0.25µm

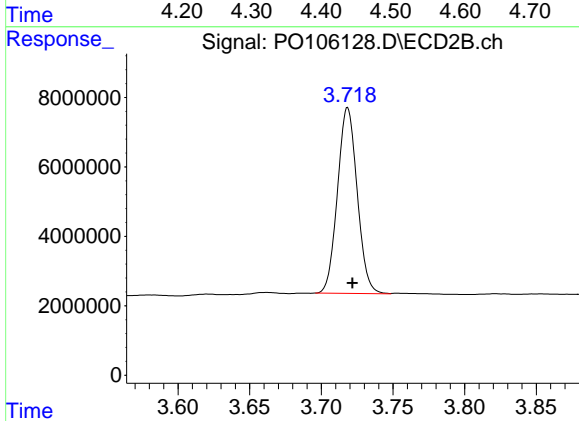




#1 Tetrachloro-m-xylene

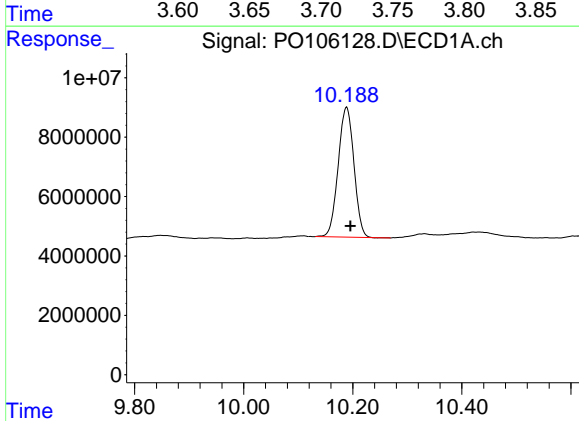
R.T.: 4.452 min  
 Delta R.T.: -0.002 min  
 Response: 131710904  
 Conc: 14.44 ng/ml

Instrument :  
 ECD\_O  
 ClientSampleId :  
 TR-04-083024



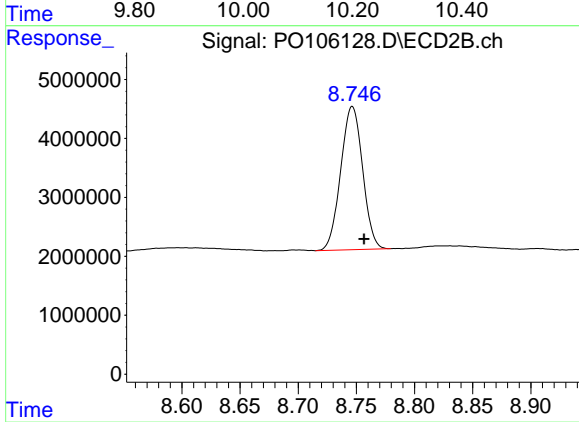
#1 Tetrachloro-m-xylene

R.T.: 3.718 min  
 Delta R.T.: -0.003 min  
 Response: 51182799  
 Conc: 18.94 ng/ml



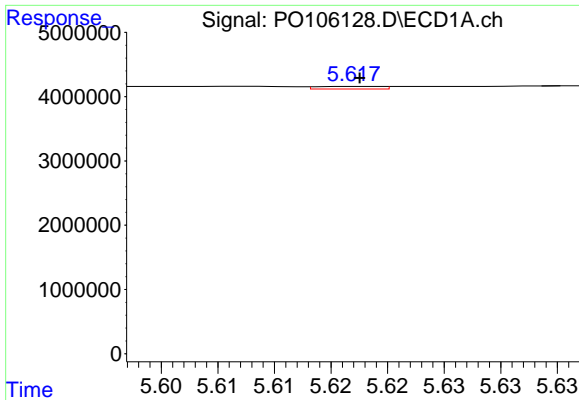
#2 Decachlorobiphenyl

R.T.: 10.189 min  
 Delta R.T.: -0.007 min  
 Response: 87765168  
 Conc: 16.17 ng/ml



#2 Decachlorobiphenyl

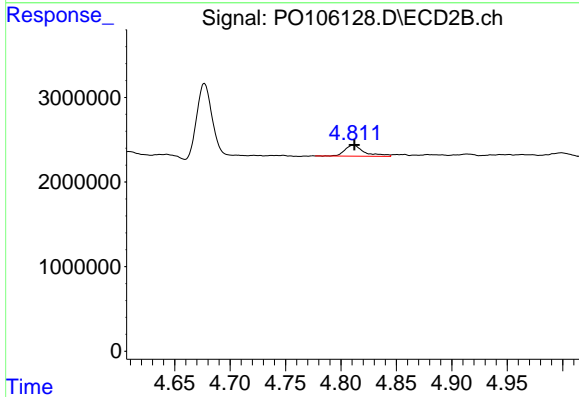
R.T.: 8.747 min  
 Delta R.T.: -0.010 min  
 Response: 31848603  
 Conc: 14.59 ng/ml



#3 AR-1016-1

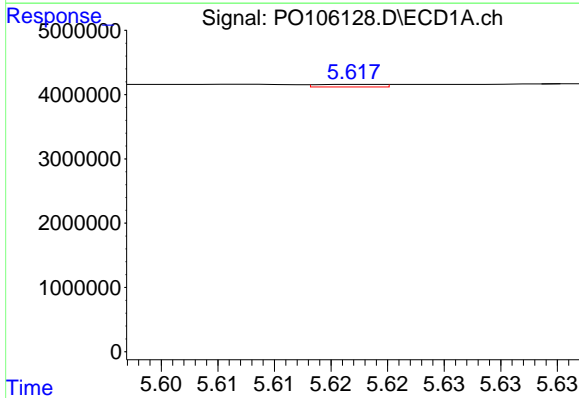
R.T.: 5.618 min  
 Delta R.T.: 0.000 min  
 Response: 158201  
 Conc: 0.50 ng/ml

Instrument :  
 ECD\_O  
 ClientSampleId :  
 TR-04-083024



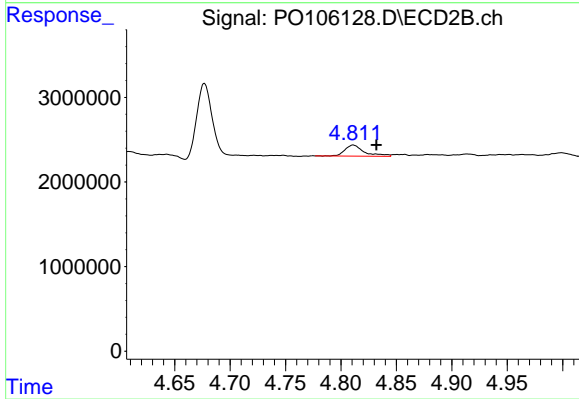
#3 AR-1016-1

R.T.: 4.811 min  
 Delta R.T.: 0.000 min  
 Response: 1588830  
 Conc: 16.62 ng/ml



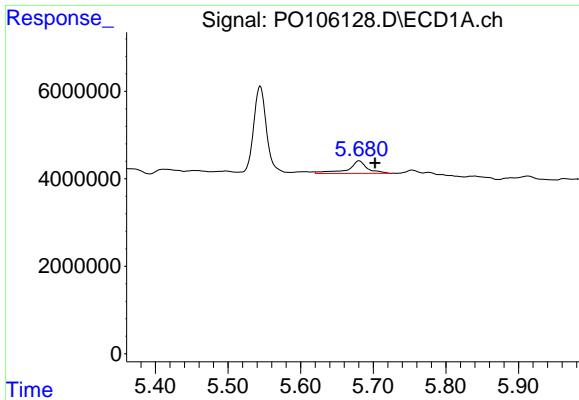
#4 AR-1016-2

R.T.: 5.618 min  
 Delta R.T.: -0.022 min  
 Response: 158201  
 Conc: 0.36 ng/ml



#4 AR-1016-2

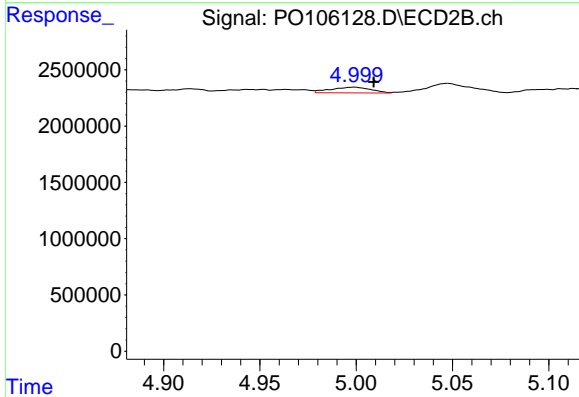
R.T.: 4.811 min  
 Delta R.T.: -0.021 min  
 Response: 1588830  
 Conc: 12.52 ng/ml



#5 AR-1016-3

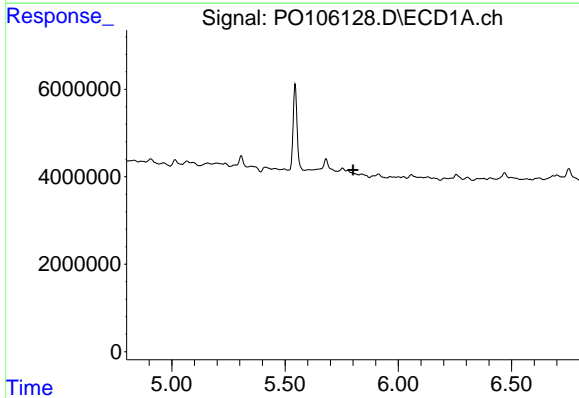
R.T.: 5.681 min  
 Delta R.T.: -0.022 min  
 Response: 5466828  
 Conc: 20.33 ng/ml

Instrument :  
 ECD\_O  
 ClientSampleId :  
 TR-04-083024



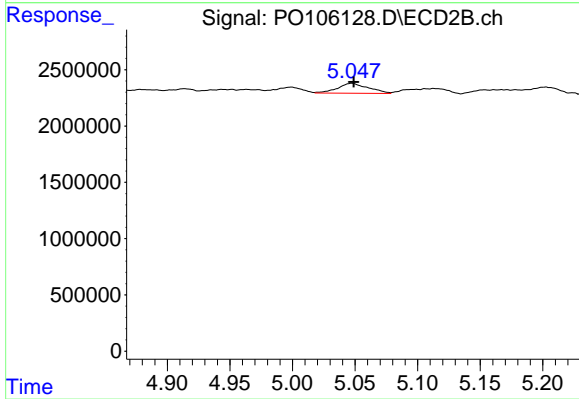
#5 AR-1016-3

R.T.: 4.999 min  
 Delta R.T.: -0.010 min  
 Response: 746204  
 Conc: 10.67 ng/ml



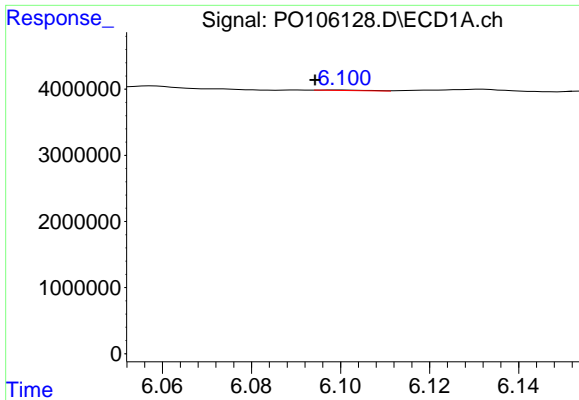
#6 AR-1016-4

R.T.: 5.776 min  
 Delta R.T.: -0.024 min  
 Response: -171549  
 Conc: N.D.



#6 AR-1016-4

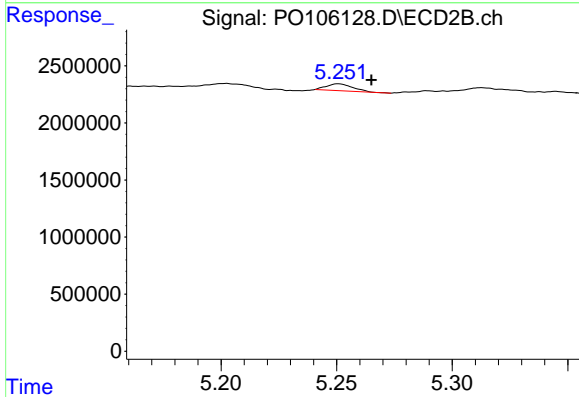
R.T.: 5.047 min  
 Delta R.T.: -0.002 min  
 Response: 1514254  
 Conc: 28.16 ng/ml



#7 AR-1016-5

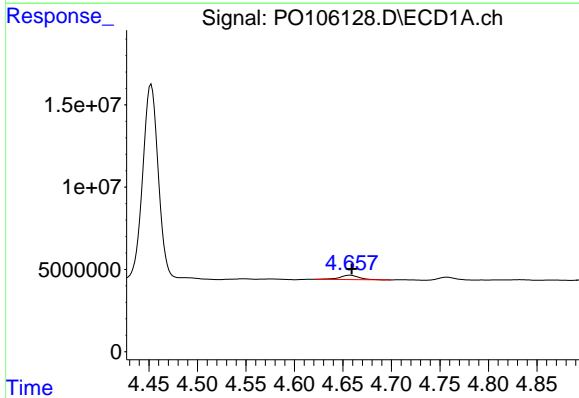
R.T.: 6.099 min  
 Delta R.T.: 0.005 min  
 Response: 57350  
 Conc: 0.27 ng/ml

Instrument :  
 ECD\_O  
 ClientSampleId :  
 TR-04-083024



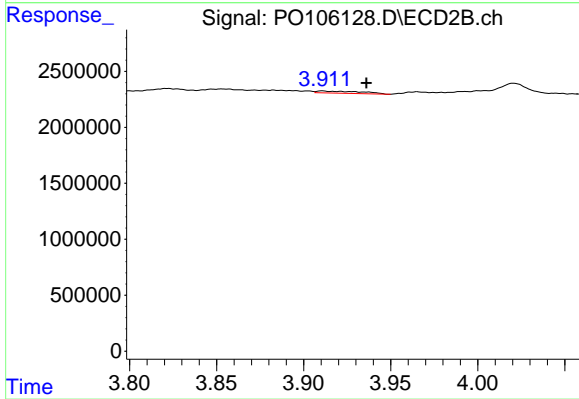
#7 AR-1016-5

R.T.: 5.251 min  
 Delta R.T.: -0.014 min  
 Response: 479329  
 Conc: 6.97 ng/ml



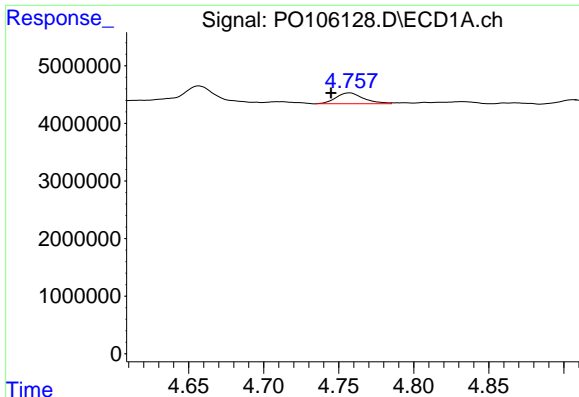
#8 AR-1221-1

R.T.: 4.657 min  
 Delta R.T.: -0.002 min  
 Response: 3817845  
 Conc: 34.68 ng/ml



#8 AR-1221-1

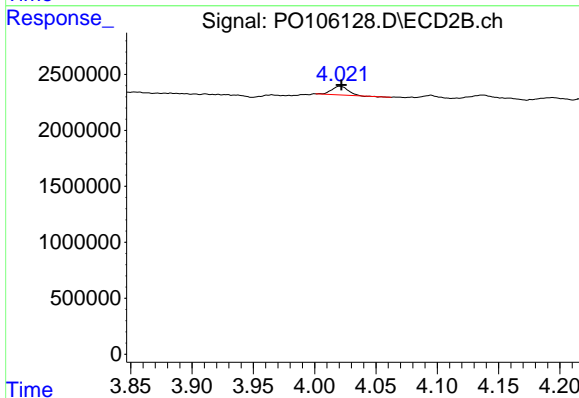
R.T.: 3.911 min  
 Delta R.T.: -0.025 min  
 Response: 331798  
 Conc: 10.87 ng/ml



#9 AR-1221-2

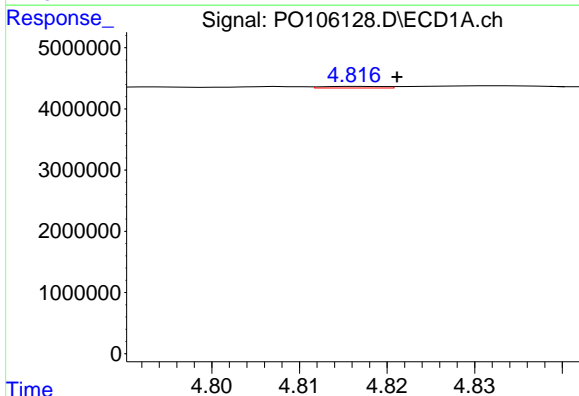
R.T.: 4.757 min  
 Delta R.T.: 0.012 min  
 Response: 2430979  
 Conc: 28.92 ng/ml

Instrument :  
 ECD\_O  
 ClientSampleId :  
 TR-04-083024



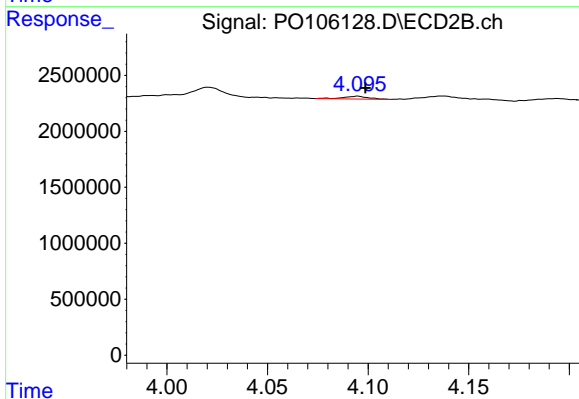
#9 AR-1221-2

R.T.: 4.021 min  
 Delta R.T.: -0.001 min  
 Response: 715936  
 Conc: 31.33 ng/ml



#10 AR-1221-3

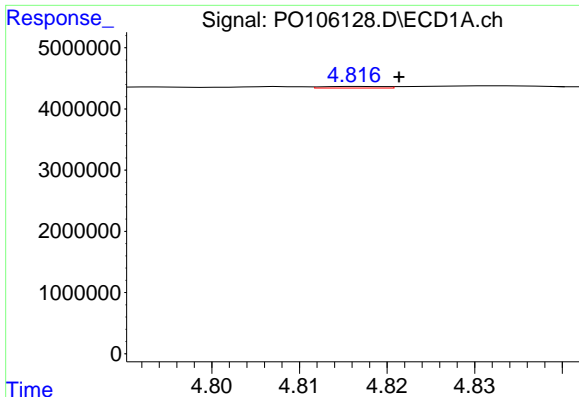
R.T.: 4.817 min  
 Delta R.T.: -0.004 min  
 Response: 130882  
 Conc: 0.54 ng/ml



#10 AR-1221-3

R.T.: 4.095 min  
 Delta R.T.: -0.004 min  
 Response: 211577  
 Conc: 2.96 ng/ml

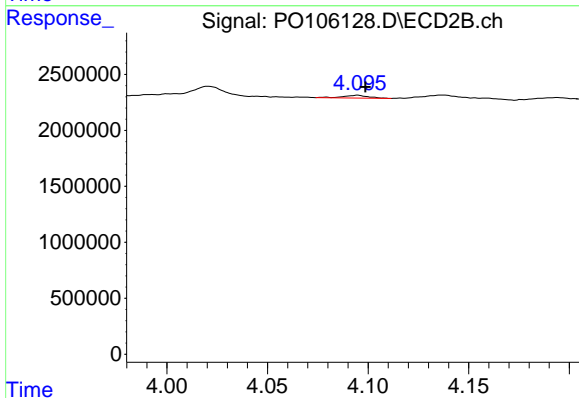




#11 AR-1232-1

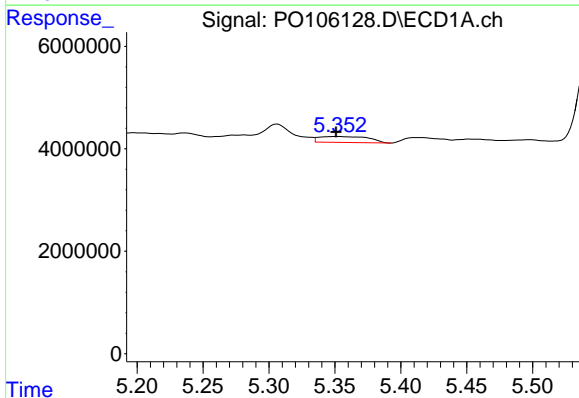
R.T.: 4.817 min  
 Delta R.T.: -0.004 min  
 Response: 130882  
 Conc: 0.65 ng/ml

Instrument :  
 ECD\_O  
 ClientSampleId :  
 TR-04-083024



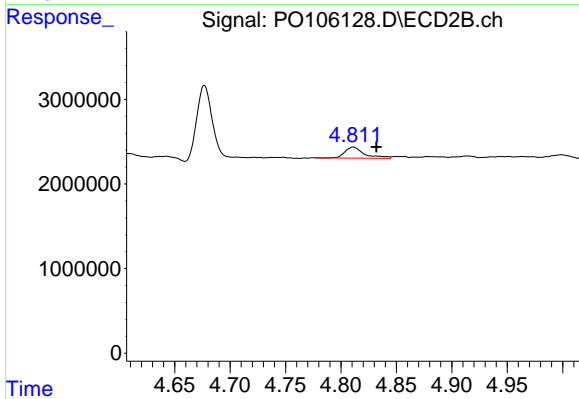
#11 AR-1232-1

R.T.: 4.095 min  
 Delta R.T.: -0.004 min  
 Response: 211577  
 Conc: 3.60 ng/ml



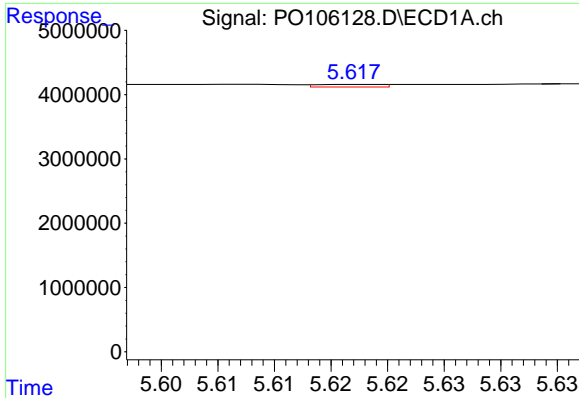
#12 AR-1232-2

R.T.: 5.352 min  
 Delta R.T.: 0.001 min  
 Response: 3040655  
 Conc: 27.99 ng/ml



#12 AR-1232-2

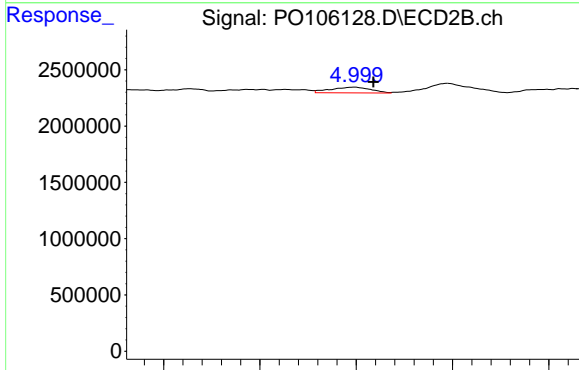
R.T.: 4.811 min  
 Delta R.T.: -0.021 min  
 Response: 1588830  
 Conc: 28.13 ng/ml



#13 AR-1232-3

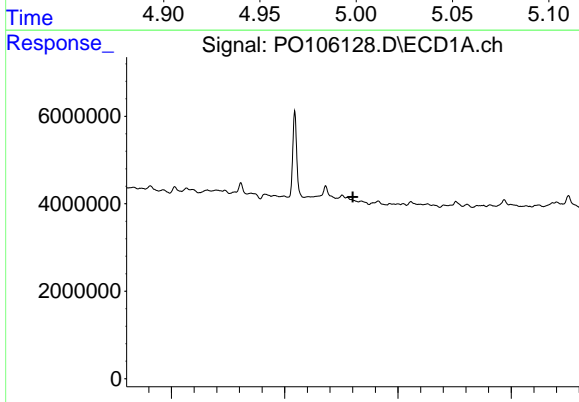
R.T.: 5.618 min  
 Delta R.T.: -0.022 min  
 Response: 158201  
 Conc: 0.80 ng/ml

Instrument :  
 ECD\_O  
 ClientSampleId :  
 TR-04-083024



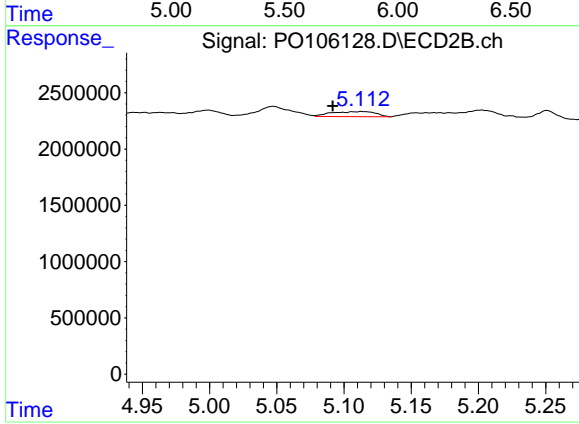
#13 AR-1232-3

R.T.: 4.999 min  
 Delta R.T.: -0.010 min  
 Response: 746204  
 Conc: 24.15 ng/ml



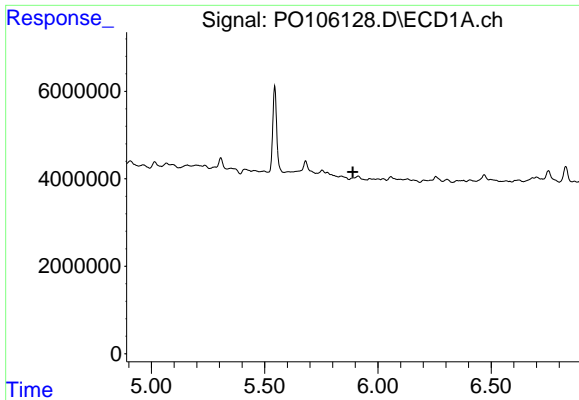
#14 AR-1232-4

R.T.: 5.776 min  
 Delta R.T.: -0.024 min  
 Response: -171549  
 Conc: N.D.



#14 AR-1232-4

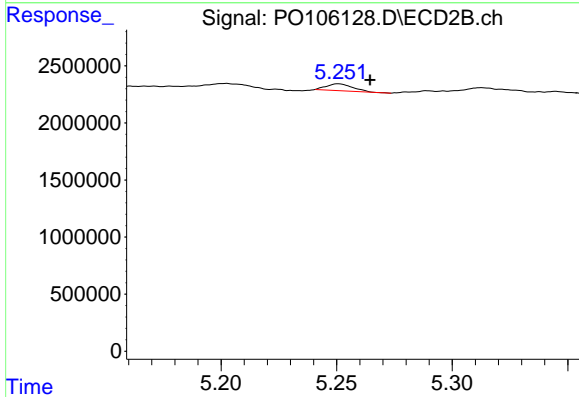
R.T.: 5.113 min  
 Delta R.T.: 0.021 min  
 Response: 1035680  
 Conc: 38.33 ng/ml



#15 AR-1232-5

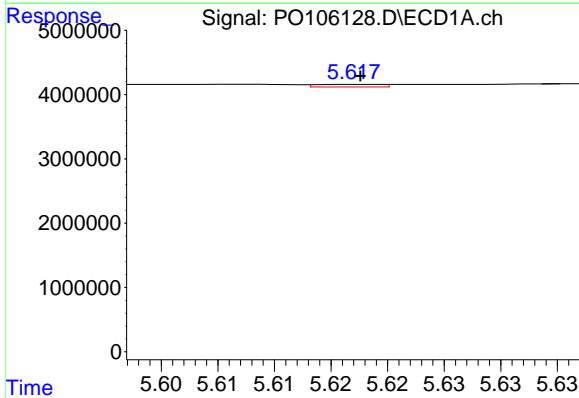
R.T.: 5.891 min  
 Delta R.T.: 0.000 min  
 Response: -40181  
 Conc: N.D.

Instrument :  
 ECD\_O  
 ClientSampleId :  
 TR-04-083024



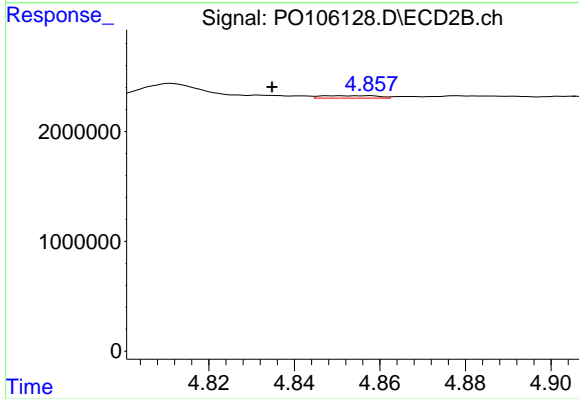
#15 AR-1232-5

R.T.: 5.251 min  
 Delta R.T.: -0.014 min  
 Response: 479329  
 Conc: 16.21 ng/ml



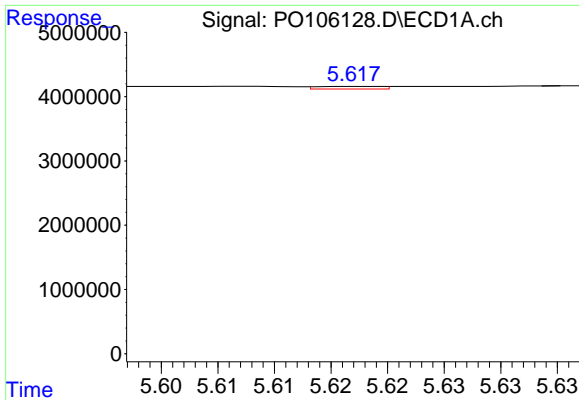
#16 AR-1242-1

R.T.: 5.618 min  
 Delta R.T.: 0.000 min  
 Response: 158201  
 Conc: 0.65 ng/ml



#16 AR-1242-1

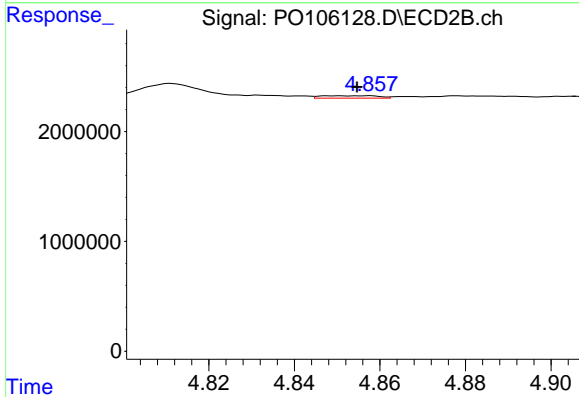
R.T.: 4.857 min  
 Delta R.T.: 0.022 min  
 Response: 206773  
 Conc: 2.91 ng/ml



#17 AR-1242-2

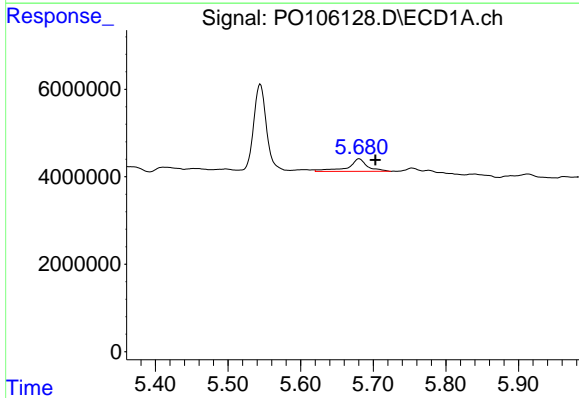
R.T.: 5.618 min  
 Delta R.T.: -0.023 min  
 Response: 158201  
 Conc: 0.48 ng/ml

Instrument :  
 ECD\_O  
 ClientSampleId :  
 TR-04-083024



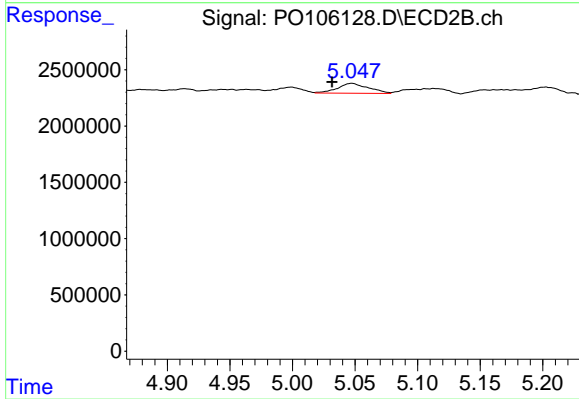
#17 AR-1242-2

R.T.: 4.857 min  
 Delta R.T.: 0.002 min  
 Response: 206773  
 Conc: 2.21 ng/ml



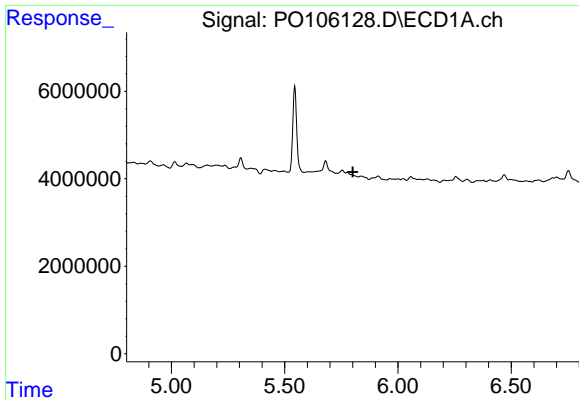
#18 AR-1242-3

R.T.: 5.681 min  
 Delta R.T.: -0.022 min  
 Response: 5466828  
 Conc: 26.61 ng/ml



#18 AR-1242-3

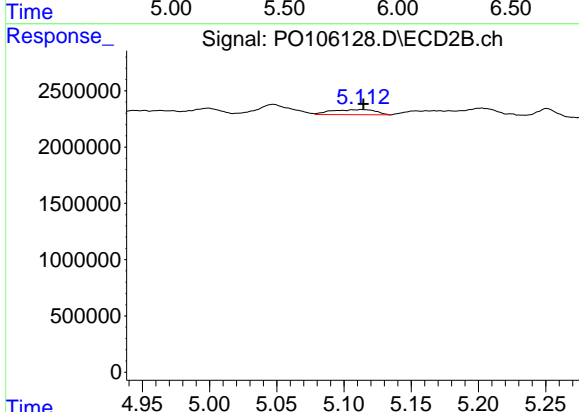
R.T.: 5.047 min  
 Delta R.T.: 0.016 min  
 Response: 1514254  
 Conc: 29.69 ng/ml



#19 AR-1242-4

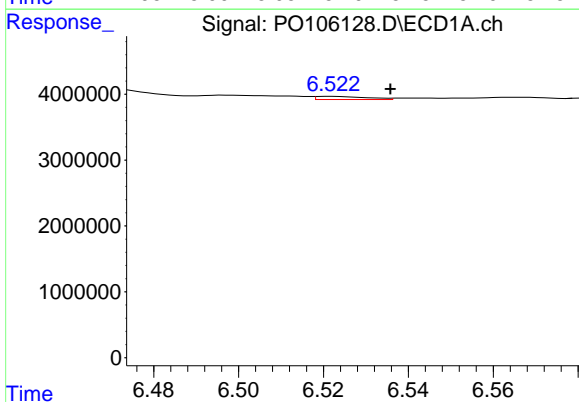
R.T.: 5.776 min  
 Delta R.T.: -0.024 min  
 Response: -171549  
 Conc: N.D.

Instrument :  
 ECD\_O  
 ClientSampleId :  
 TR-04-083024



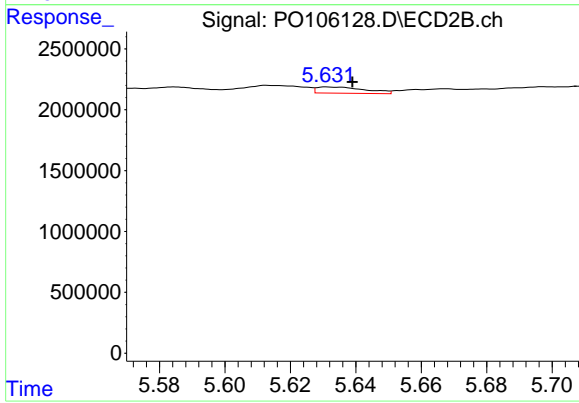
#19 AR-1242-4

R.T.: 5.113 min  
 Delta R.T.: -0.001 min  
 Response: 1035680  
 Conc: 20.20 ng/ml



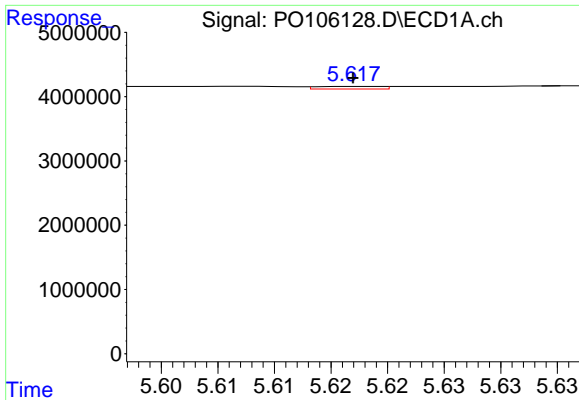
#20 AR-1242-5

R.T.: 6.522 min  
 Delta R.T.: -0.014 min  
 Response: 403661  
 Conc: 2.37 ng/ml



#20 AR-1242-5

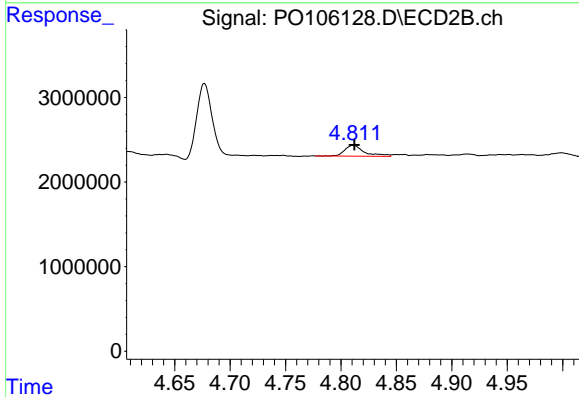
R.T.: 5.632 min  
 Delta R.T.: -0.008 min  
 Response: 533114  
 Conc: 8.25 ng/ml



#21 AR-1248-1

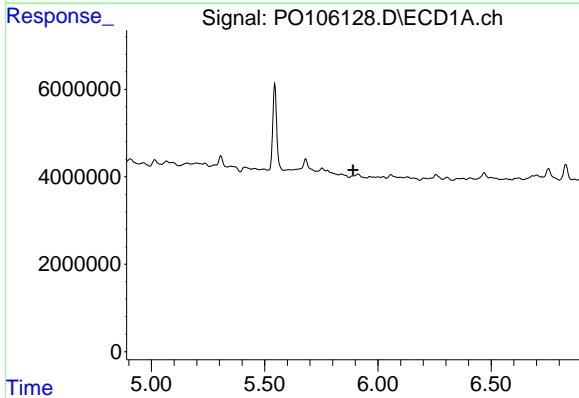
R.T.: 5.618 min  
 Delta R.T.: 0.000 min  
 Response: 158201  
 Conc: 0.84 ng/ml

Instrument :  
 ECD\_O  
 ClientSampleId :  
 TR-04-083024



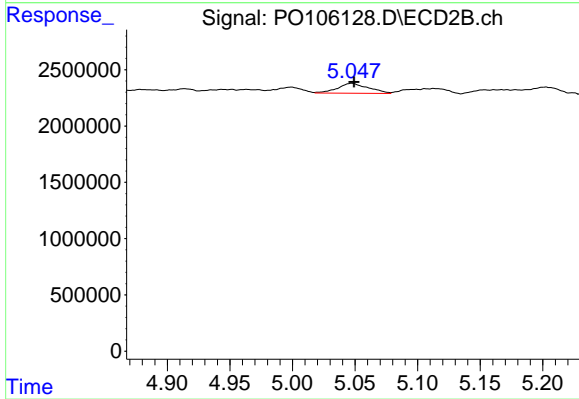
#21 AR-1248-1

R.T.: 4.811 min  
 Delta R.T.: 0.000 min  
 Response: 1588830  
 Conc: 28.37 ng/ml



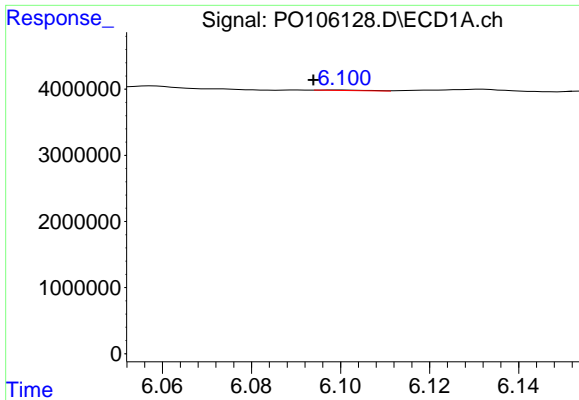
#22 AR-1248-2

R.T.: 5.891 min  
 Delta R.T.: 0.000 min  
 Response: -40181  
 Conc: N.D.



#22 AR-1248-2

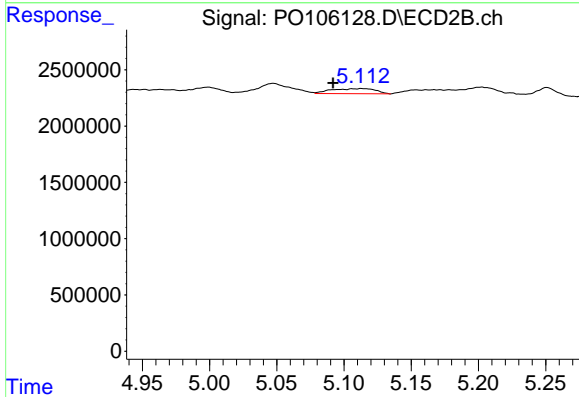
R.T.: 5.047 min  
 Delta R.T.: -0.002 min  
 Response: 1514254  
 Conc: 20.34 ng/ml



#23 AR-1248-3

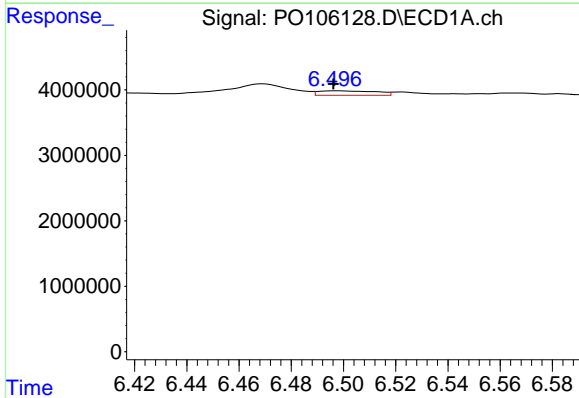
R.T.: 6.099 min  
 Delta R.T.: 0.005 min  
 Response: 57350  
 Conc: 0.20 ng/ml

Instrument :  
 ECD\_O  
 ClientSampleId :  
 TR-04-083024



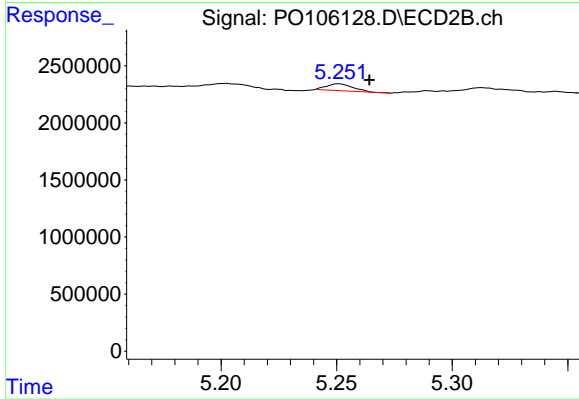
#23 AR-1248-3

R.T.: 5.113 min  
 Delta R.T.: 0.021 min  
 Response: 1035680  
 Conc: 13.19 ng/ml



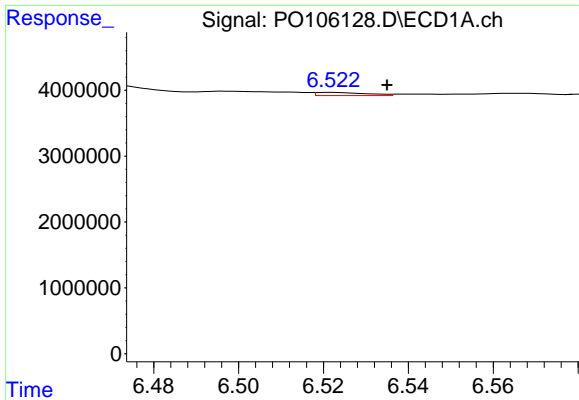
#24 AR-1248-4

R.T.: 6.497 min  
 Delta R.T.: 0.000 min  
 Response: 1028874  
 Conc: 3.26 ng/ml



#24 AR-1248-4

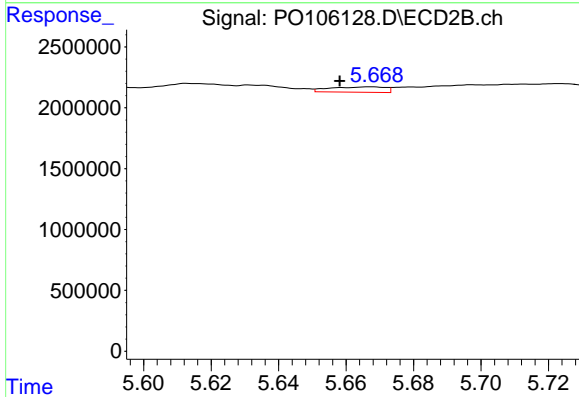
R.T.: 5.251 min  
 Delta R.T.: -0.013 min  
 Response: 479329  
 Conc: 5.15 ng/ml



#25 AR-1248-5

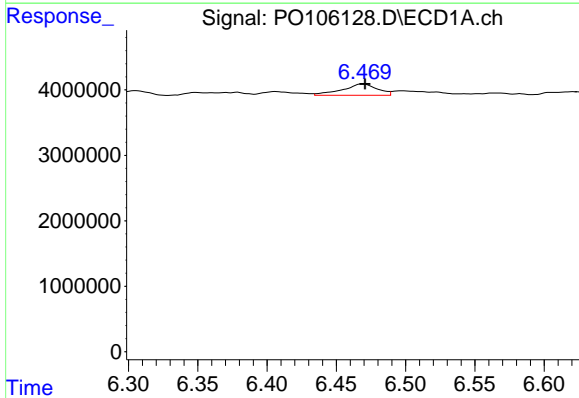
R.T.: 6.522 min  
 Delta R.T.: -0.013 min  
 Response: 403661  
 Conc: 1.33 ng/ml

Instrument :  
 ECD\_O  
 ClientSampleId :  
 TR-04-083024



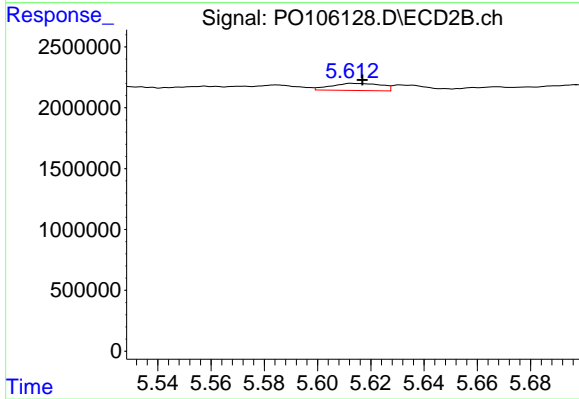
#25 AR-1248-5

R.T.: 5.667 min  
 Delta R.T.: 0.009 min  
 Response: 502368  
 Conc: 5.48 ng/ml



#26 AR-1254-1

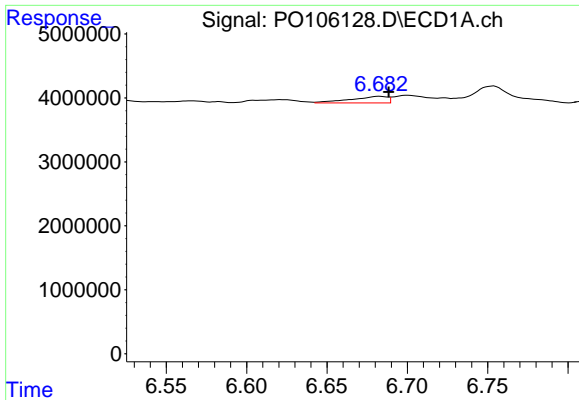
R.T.: 6.469 min  
 Delta R.T.: -0.002 min  
 Response: 3044707  
 Conc: 9.86 ng/ml



#26 AR-1254-1

R.T.: 5.613 min  
 Delta R.T.: -0.003 min  
 Response: 775085  
 Conc: 5.74 ng/ml

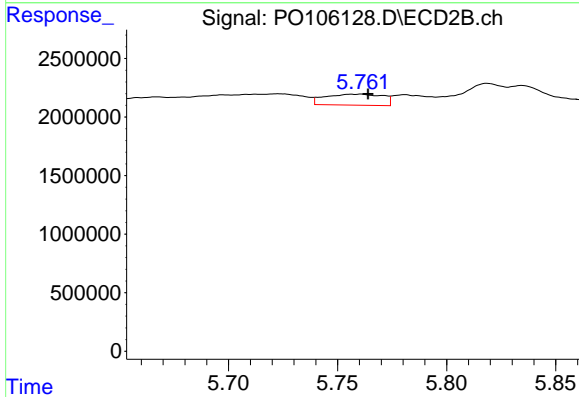




#27 AR-1254-2

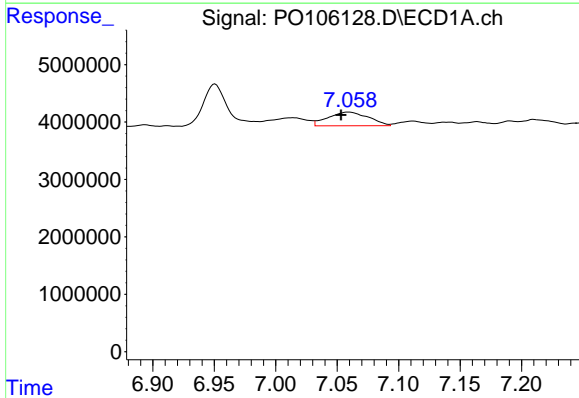
R.T.: 6.683 min  
 Delta R.T.: -0.006 min  
 Response: 1658569  
 Conc: 3.60 ng/ml

Instrument :  
 ECD\_O  
 ClientSampleId :  
 TR-04-083024



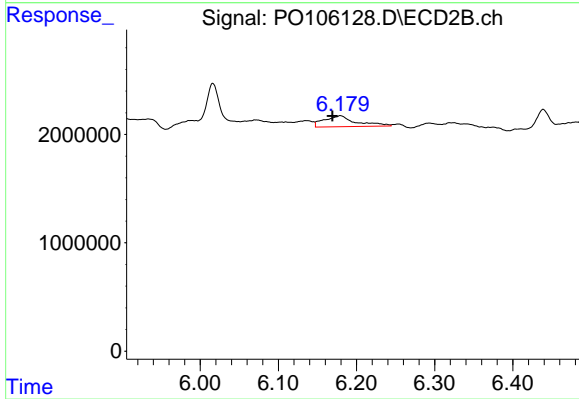
#27 AR-1254-2

R.T.: 5.761 min  
 Delta R.T.: -0.003 min  
 Response: 1708972  
 Conc: 14.08 ng/ml



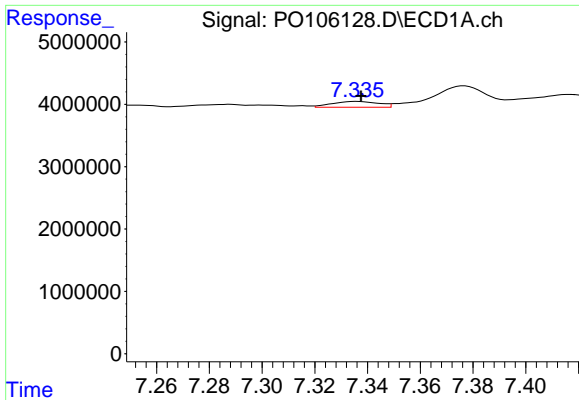
#28 AR-1254-3

R.T.: 7.059 min  
 Delta R.T.: 0.006 min  
 Response: 5448953  
 Conc: 11.53 ng/ml



#28 AR-1254-3

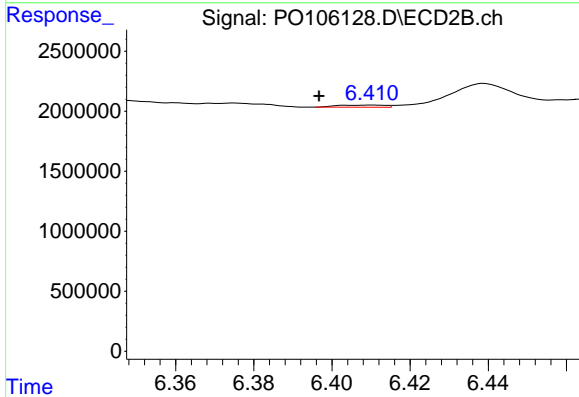
R.T.: 6.180 min  
 Delta R.T.: 0.010 min  
 Response: 2824590  
 Conc: 14.65 ng/ml



#29 AR-1254-4

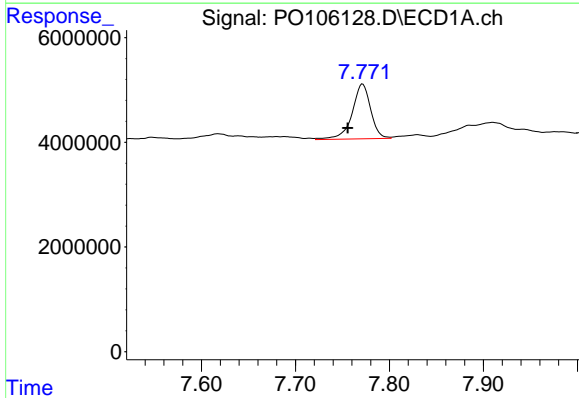
R.T.: 7.336 min  
 Delta R.T.: -0.002 min  
 Response: 1151701  
 Conc: 3.31 ng/ml

Instrument :  
 ECD\_O  
 ClientSampleId :  
 TR-04-083024



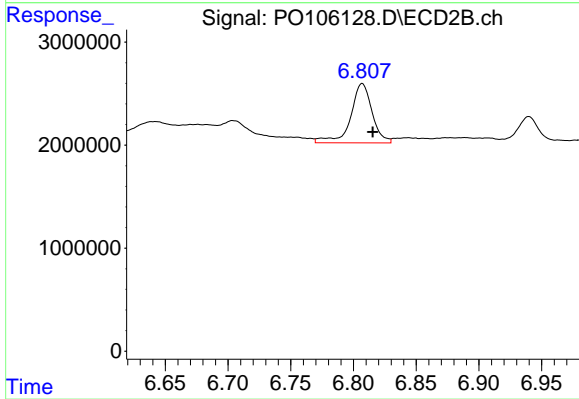
#29 AR-1254-4

R.T.: 6.410 min  
 Delta R.T.: 0.013 min  
 Response: 154641  
 Conc: 1.28 ng/ml



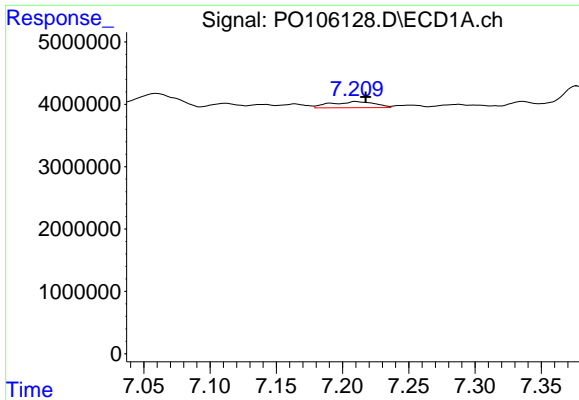
#30 AR-1254-5

R.T.: 7.771 min  
 Delta R.T.: 0.016 min  
 Response: 14373288  
 Conc: 39.36 ng/ml



#30 AR-1254-5

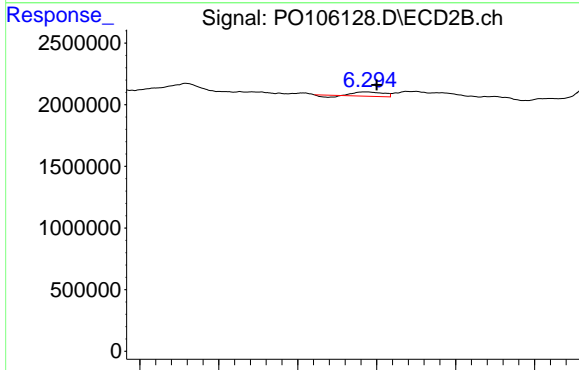
R.T.: 6.807 min  
 Delta R.T.: -0.008 min  
 Response: 6842691  
 Conc: 38.70 ng/ml



#31 AR-1260-1

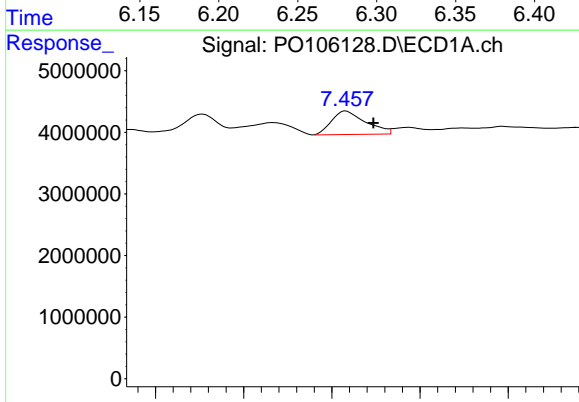
R.T.: 7.210 min  
 Delta R.T.: -0.007 min  
 Response: 2280540  
 Conc: 6.35 ng/ml

Instrument :  
 ECD\_O  
 ClientSampleId :  
 TR-04-083024



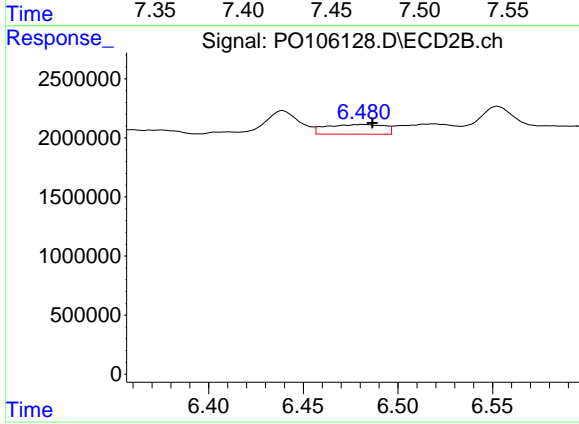
#31 AR-1260-1

R.T.: 6.293 min  
 Delta R.T.: -0.007 min  
 Response: 356877  
 Conc: 2.71 ng/ml



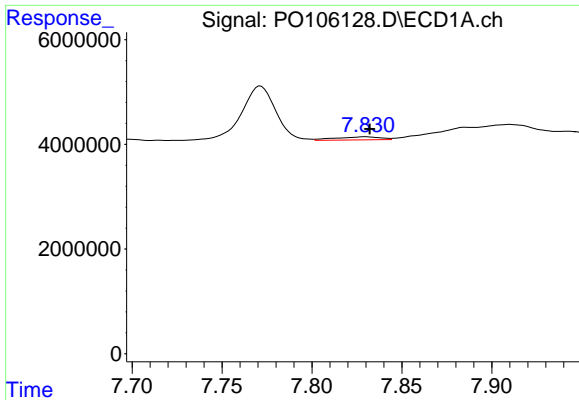
#32 AR-1260-2

R.T.: 7.458 min  
 Delta R.T.: -0.015 min  
 Response: 5140099  
 Conc: 12.24 ng/ml



#32 AR-1260-2

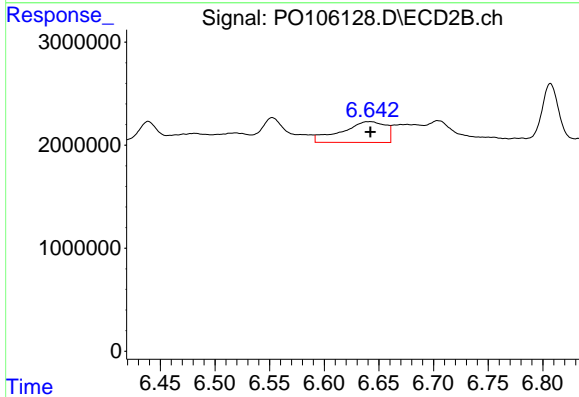
R.T.: 6.482 min  
 Delta R.T.: -0.005 min  
 Response: 1769617  
 Conc: 10.78 ng/ml



#33 AR-1260-3

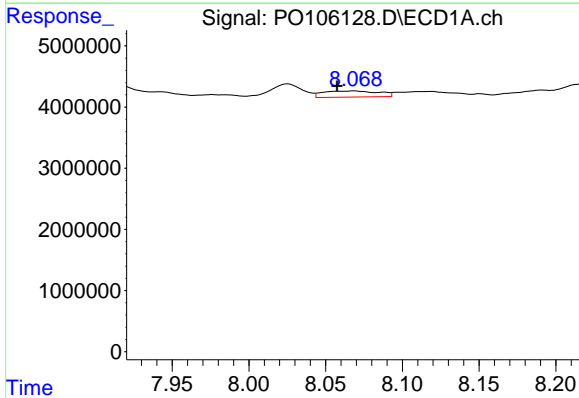
R.T.: 7.830 min  
 Delta R.T.: -0.002 min  
 Response: 1026696  
 Conc: 3.84 ng/ml

Instrument :  
 ECD\_O  
 ClientSampleId :  
 TR-04-083024



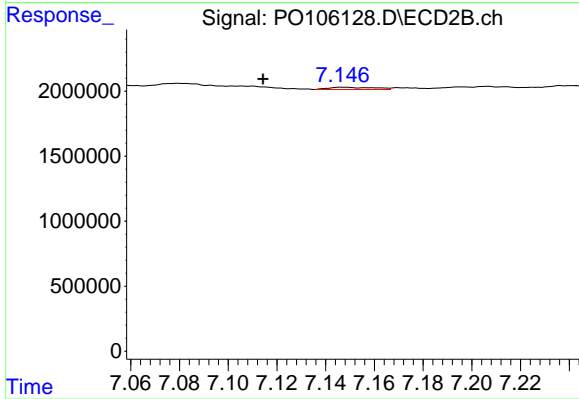
#33 AR-1260-3

R.T.: 6.642 min  
 Delta R.T.: 0.000 min  
 Response: 5676292  
 Conc: 33.63 ng/ml



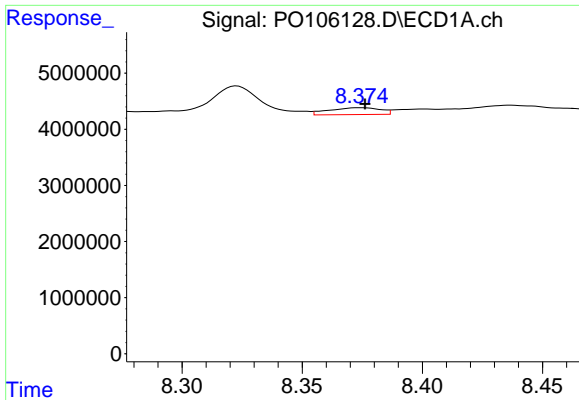
#34 AR-1260-4

R.T.: 8.069 min  
 Delta R.T.: 0.011 min  
 Response: 2538889  
 Conc: 8.19 ng/ml



#34 AR-1260-4

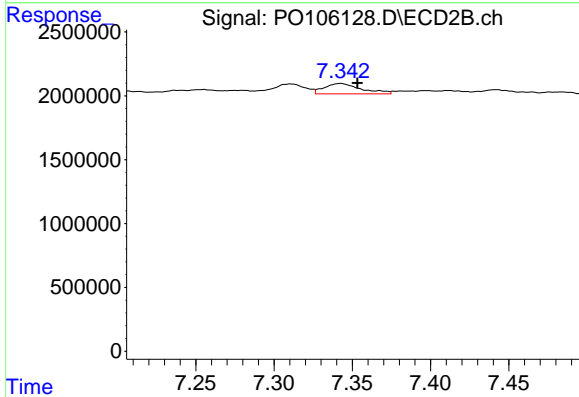
R.T.: 7.147 min  
 Delta R.T.: 0.033 min  
 Response: 217937  
 Conc: 1.97 ng/ml



#35 AR-1260-5

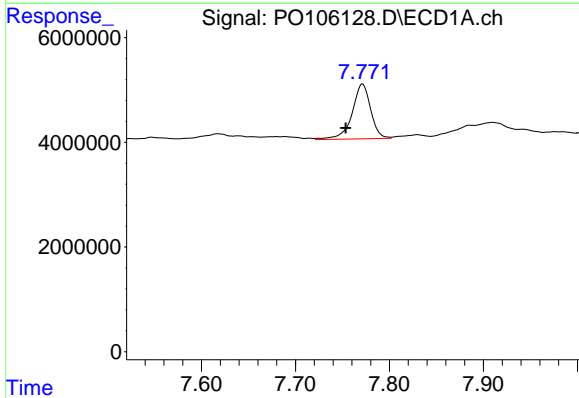
R.T.: 8.374 min  
 Delta R.T.: -0.002 min  
 Response: 1837580  
 Conc: 3.30 ng/ml

Instrument :  
 ECD\_O  
 ClientSampleId :  
 TR-04-083024



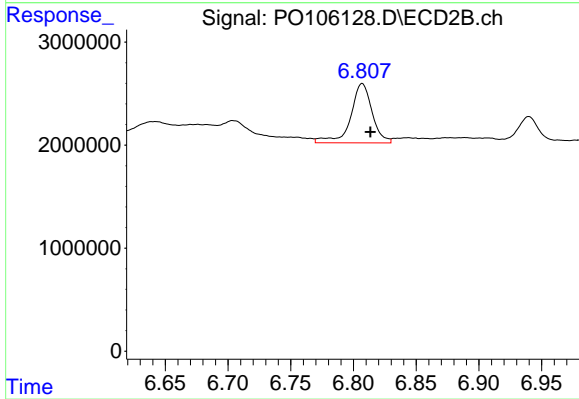
#35 AR-1260-5

R.T.: 7.343 min  
 Delta R.T.: -0.011 min  
 Response: 1323535  
 Conc: 4.88 ng/ml



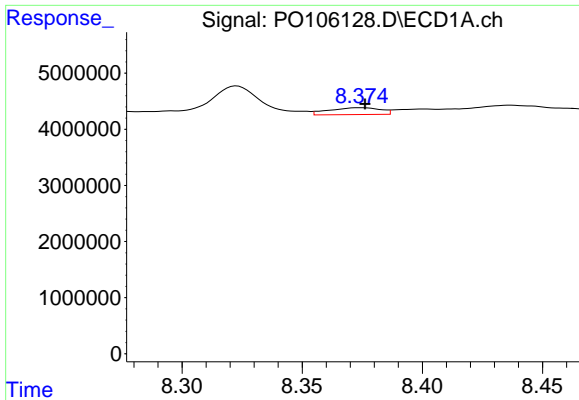
#36 AR-1262-1

R.T.: 7.771 min  
 Delta R.T.: 0.018 min  
 Response: 14373288  
 Conc: 49.49 ng/ml



#36 AR-1262-1

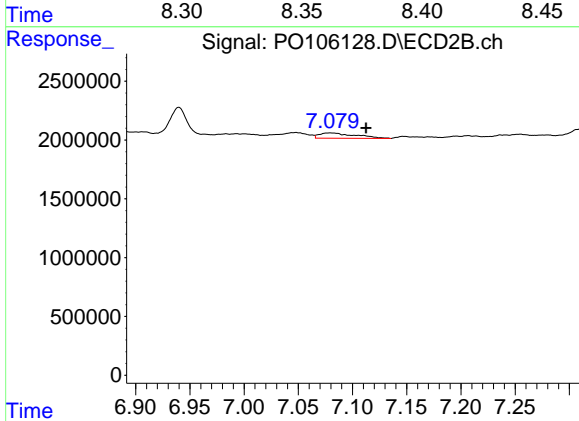
R.T.: 6.807 min  
 Delta R.T.: -0.006 min  
 Response: 6842691  
 Conc: 70.98 ng/ml



#37 AR-1262-2

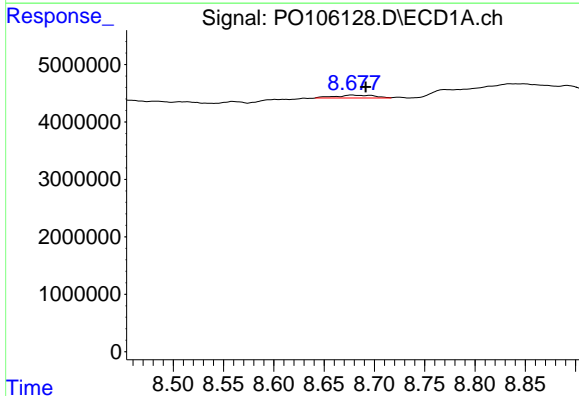
R.T.: 8.374 min  
 Delta R.T.: -0.002 min  
 Response: 1837580  
 Conc: 2.56 ng/ml

Instrument :  
 ECD\_O  
 ClientSampleId :  
 TR-04-083024



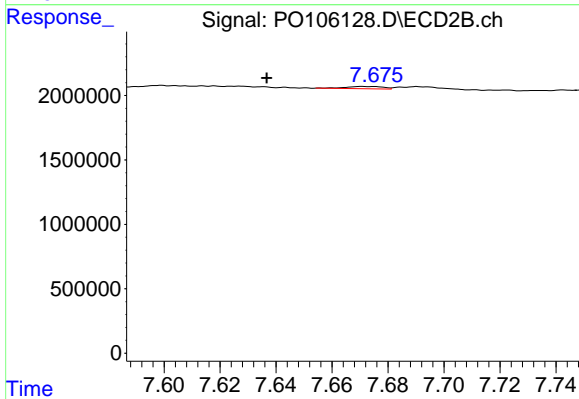
#37 AR-1262-2

R.T.: 7.080 min  
 Delta R.T.: -0.033 min  
 Response: 1045154  
 Conc: 6.73 ng/ml



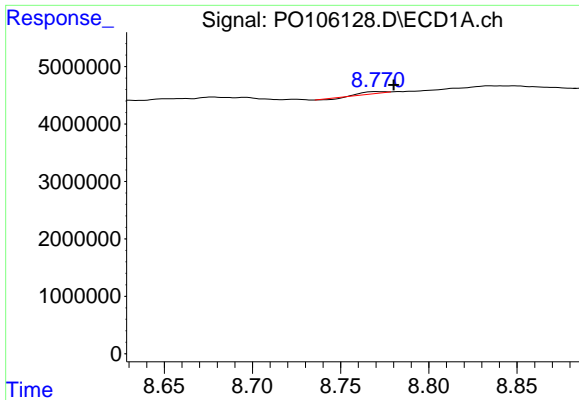
#38 AR-1262-3

R.T.: 8.678 min  
 Delta R.T.: -0.014 min  
 Response: 1349429  
 Conc: 2.80 ng/ml



#38 AR-1262-3

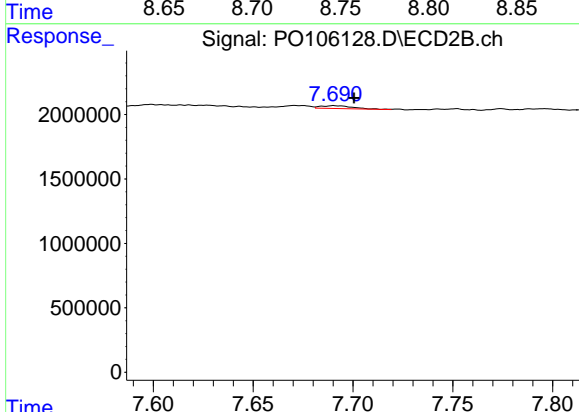
R.T.: 7.671 min  
 Delta R.T.: 0.034 min  
 Response: 168794  
 Conc: 1.48 ng/ml



#39 AR-1262-4

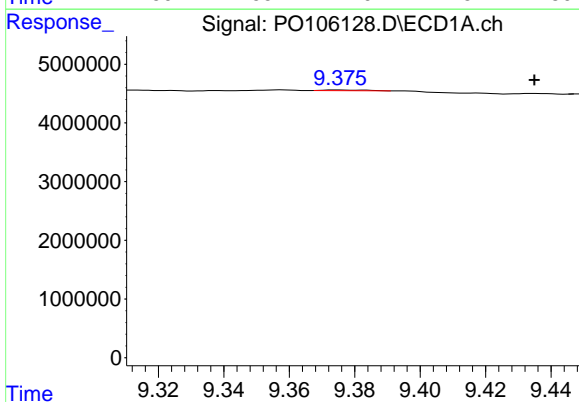
R.T.: 8.772 min  
 Delta R.T.: -0.008 min  
 Response: 164014  
 Conc: 0.46 ng/ml

Instrument :  
 ECD\_O  
 ClientSampleId :  
 TR-04-083024



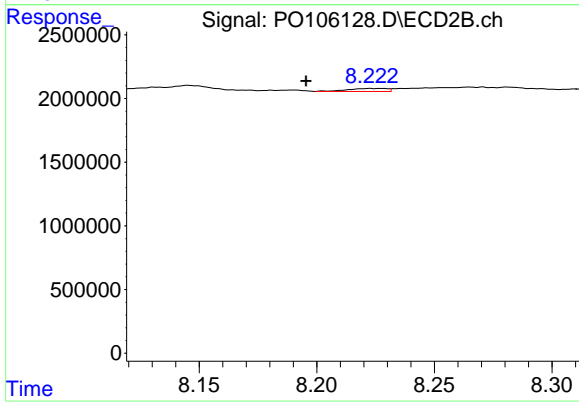
#39 AR-1262-4

R.T.: 7.690 min  
 Delta R.T.: -0.010 min  
 Response: 244206  
 Conc: 1.02 ng/ml



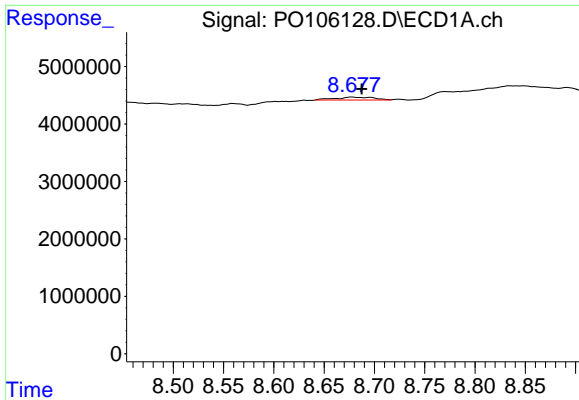
#40 AR-1262-5

R.T.: 9.375 min  
 Delta R.T.: -0.060 min  
 Response: 108151  
 Conc: 0.42 ng/ml



#40 AR-1262-5

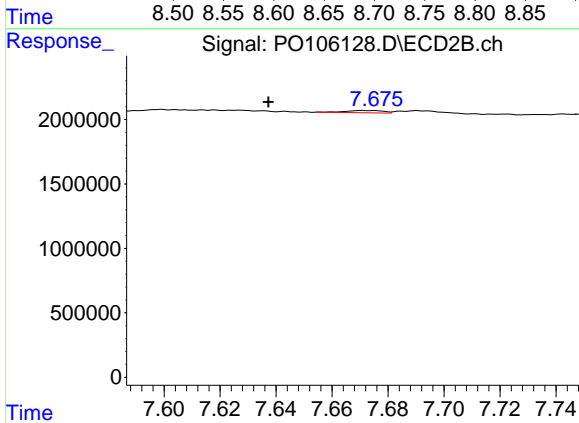
R.T.: 8.228 min  
 Delta R.T.: 0.032 min  
 Response: 271099  
 Conc: 2.47 ng/ml



#41 AR-1268-1

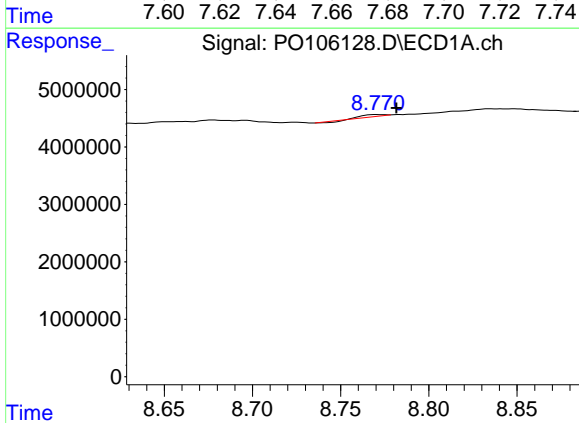
R.T.: 8.678 min  
 Delta R.T.: -0.010 min  
 Response: 1349429  
 Conc: 1.65 ng/ml

Instrument :  
 ECD\_O  
 ClientSampleId :  
 TR-04-083024



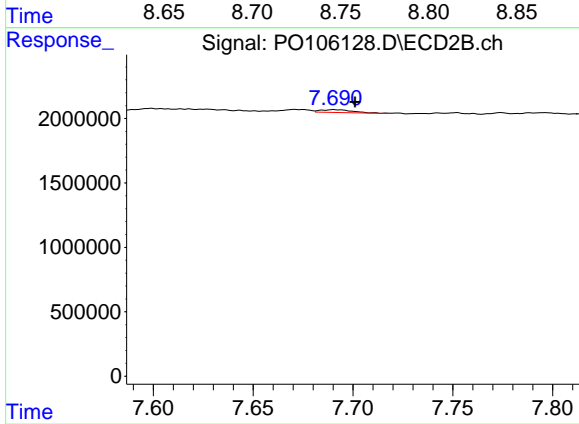
#41 AR-1268-1

R.T.: 7.671 min  
 Delta R.T.: 0.034 min  
 Response: 168794  
 Conc: 0.49 ng/ml



#42 AR-1268-2

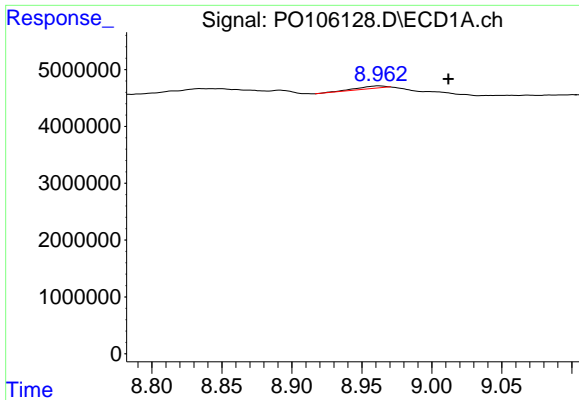
R.T.: 8.772 min  
 Delta R.T.: -0.010 min  
 Response: 164014  
 Conc: 0.22 ng/ml



#42 AR-1268-2

R.T.: 7.690 min  
 Delta R.T.: -0.011 min  
 Response: 244206  
 Conc: 0.76 ng/ml

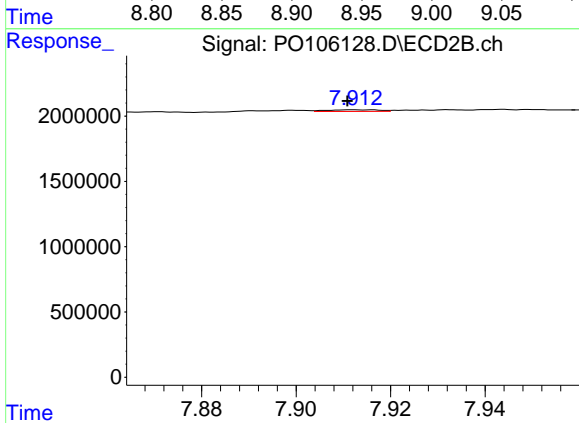




#43 AR-1268-3

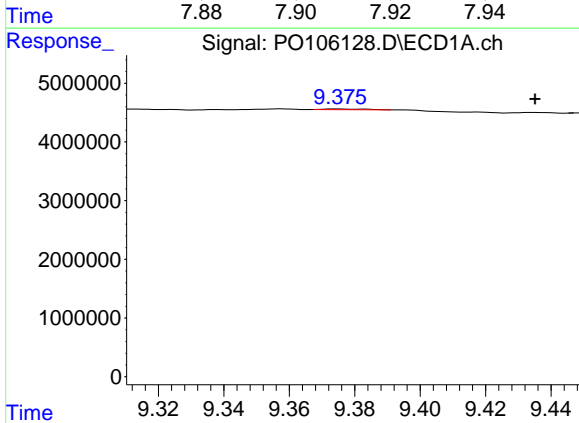
R.T.: 8.962 min  
 Delta R.T.: -0.050 min  
 Response: 595220  
 Conc: 0.97 ng/ml

Instrument :  
 ECD\_O  
 ClientSampleId :  
 TR-04-083024



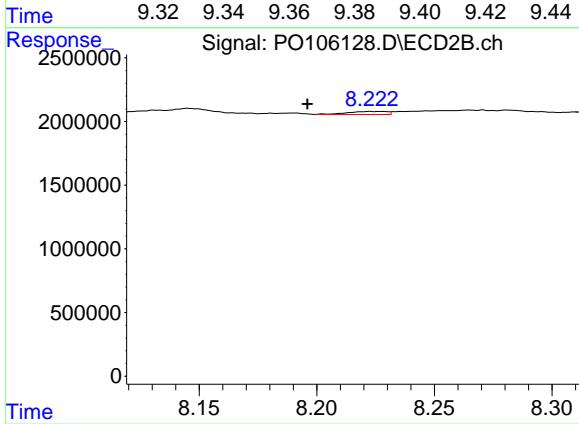
#43 AR-1268-3

R.T.: 7.912 min  
 Delta R.T.: 0.001 min  
 Response: 95476  
 Conc: 0.36 ng/ml



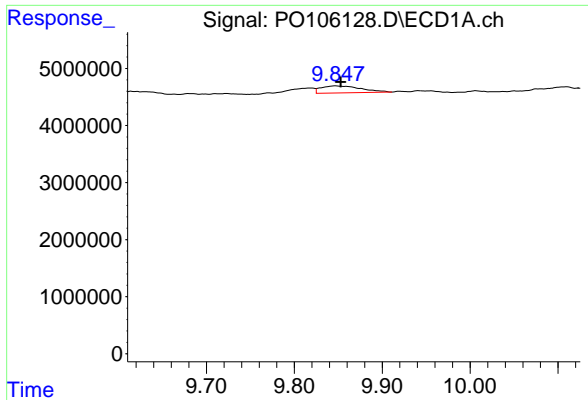
#44 AR-1268-4

R.T.: 9.375 min  
 Delta R.T.: -0.060 min  
 Response: 108151  
 Conc: 0.40 ng/ml



#44 AR-1268-4

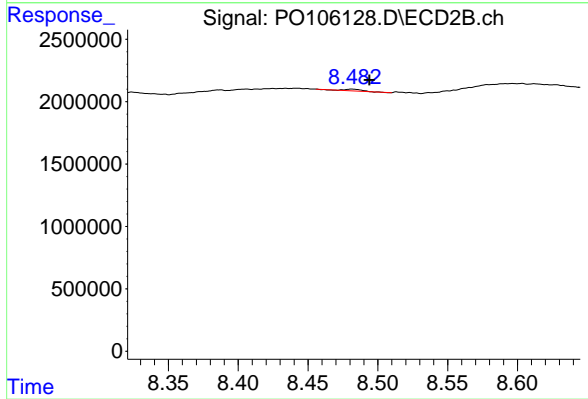
R.T.: 8.228 min  
 Delta R.T.: 0.032 min  
 Response: 271099  
 Conc: 2.39 ng/ml



#45 AR-1268-5

R.T.: 9.847 min  
 Delta R.T.: -0.006 min  
 Response: 3837199  
 Conc: 1.90 ng/ml

Instrument :  
 ECD\_O  
 ClientSampleId :  
 TR-04-083024



#45 AR-1268-5

R.T.: 8.482 min  
 Delta R.T.: -0.012 min  
 Response: 124913  
 Conc: 0.15 ng/ml