

Data Path : Z:\pestpcbsrv\HPCHEM1\ECD_0\Data\P0090419\
 Data File : P0060356.D
 Signal(s) : Signal #1: ECD1A.CH Signal #2: ECD2B.CH
 Acq On : 05 Sep 2019 3:08
 Operator : SM/AJ
 Sample : K4671-01 5X
 Misc :
 ALS Vial : 44 Sample Multiplier: 1

Instrument :
 ECD_0
 ClientSampleId :
 WC-1

Integration File signal 1: autoint1.e
 Integration File signal 2: autoint2.e
 Quant Time: Sep 05 05:06:46 2019
 Quant Method : Z:\pestpcbsrv\HPCHEM1\ECD_0\methods\P0081719.M
 Quant Title : GC EXTRACTABLES
 QLast Update : Fri Aug 30 18:12:46 2019
 Response via : Initial Calibration
 Integrator: ChemStation 6890 Scale Mode: Small noise peaks clipped

Volume Inj. : 2 µl
 Signal #1 Phase : ZB-MR2 Signal #2 Phase: ZB-MR2
 Signal #1 Info : 30Mx0.32mmx 0.50µ Signal #2 Info : 30M x 0.32mm x 0.25µm

Compound	RT#1	RT#2	Resp#1	Resp#2	ng/ml	ng/ml
System Monitoring Compounds						
1) SA Tetrachlo...	4.105	3.487	208672	197568	5.960	5.489
2) SA Decachlor...	9.552	8.335	290491	220847	5.460	5.477
Target Compounds						
10) L2 AR-1221-3	0.000	3.914	0	60619	N.D.	61.954 #
11) L3 AR-1232-1	0.000	3.914	0	60619	N.D.	53.168 #
12) L3 AR-1232-2	4.972	0.000	1030423	0	1458.704	N.D. #
20) L4 AR-1242-5	0.000	5.314	0	18406	N.D.	16.454 #
25) L5 AR-1248-5	0.000	5.314	0	18406	N.D.	12.860 #
26) L6 AR-1254-1	0.000	5.314	0	18406	N.D.	7.760 #
27) L6 AR-1254-2	0.000	5.456	0	36030	N.D.	17.171 #
28) L6 AR-1254-3	0.000	5.853	0	41910	N.D.	12.464 #
29) L6 AR-1254-4	0.000	6.078	0	18829	N.D.	9.132 #
30) L6 AR-1254-5	0.000	6.486	0	53864	N.D.	17.348 #
32) L7 AR-1260-2	0.000	6.164	0	43227	N.D.	14.754 #
33) L7 AR-1260-3	0.000	6.311	0	33196	N.D.	12.531 #
34) L7 AR-1260-4	0.000	6.771	0	69075	N.D.	30.529 #
35) L7 AR-1260-5	0.000	7.032	0	47970	N.D.	8.717 #
36) L8 AR-1262-1	0.000	6.486	0	53864	N.D.	14.450 #
37) L8 AR-1262-2	0.000	7.032	0	47970	N.D.	8.159 #
38) L8 AR-1262-3	0.000	7.293	0	171011	N.D.	67.302 #
39) L8 AR-1262-4	0.000	7.357	0	76380	N.D.	17.285 #
40) L8 AR-1262-5	0.000	7.848	0	145506	N.D.	80.588 #
41) L9 AR-1268-1	0.000	7.293	0	171011	N.D.	24.015 #
42) L9 AR-1268-2	0.000	7.357	0	76380	N.D.	11.846 #
44) L9 AR-1268-4	0.000	7.848	0	145506	N.D.	71.281 #

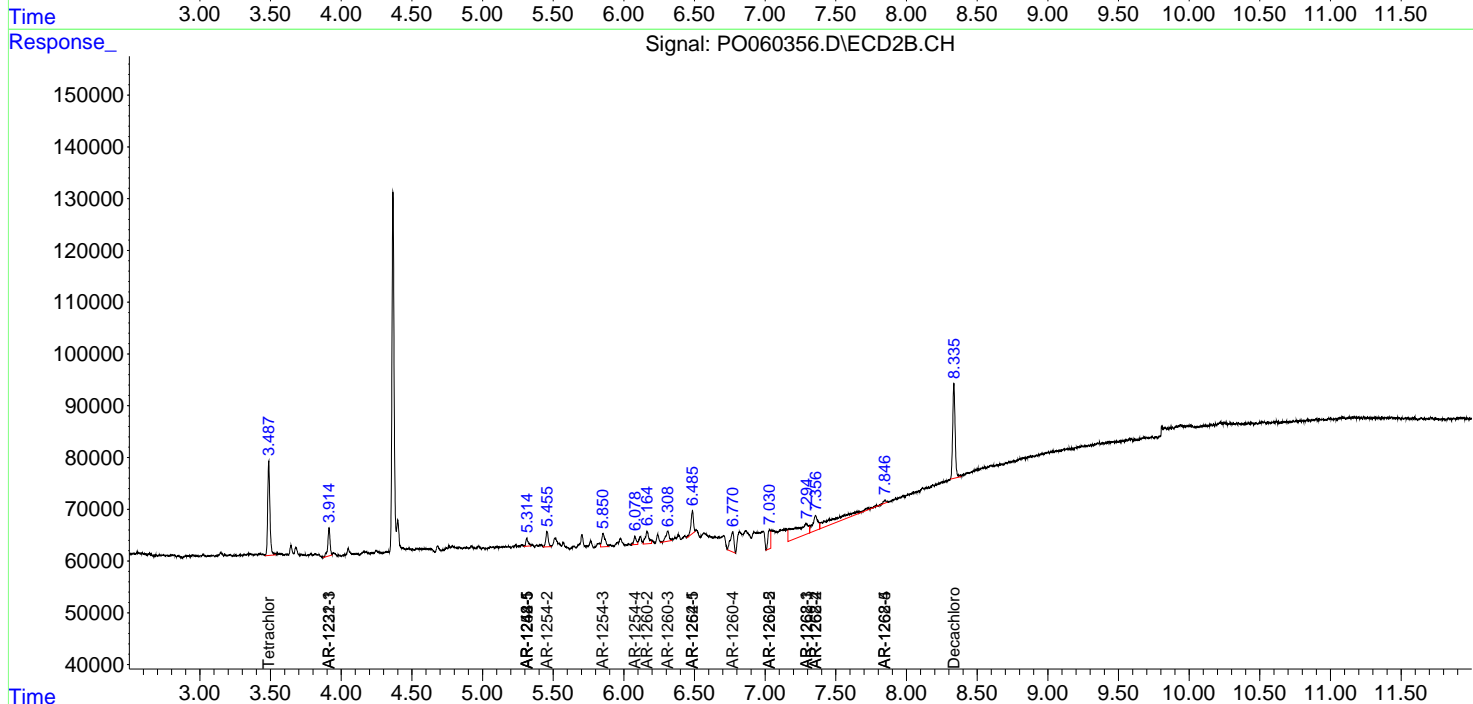
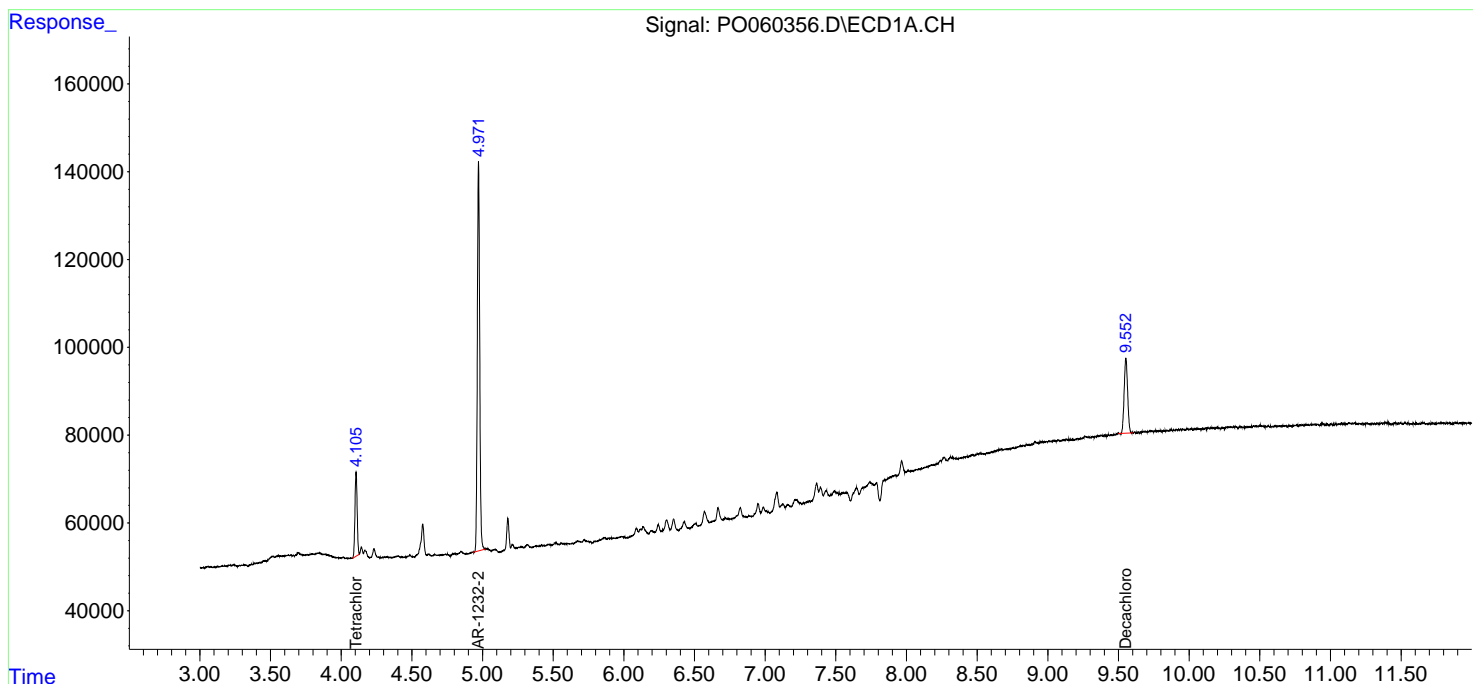
(f)=RT Delta > 1/2 Window (#)=Amounts differ by > 25% (m)=manual int.

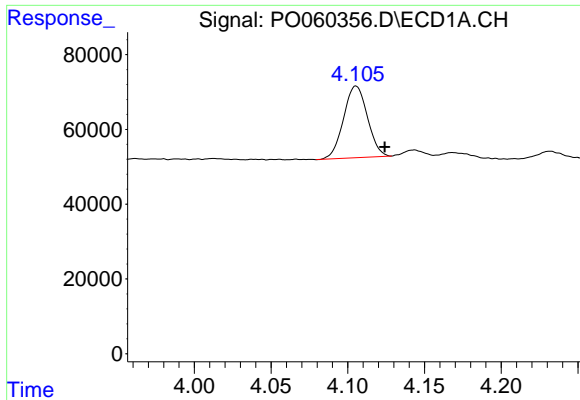
Data Path : Z:\pestpcbsrv\HPCHEM1\ECD_O\Data\P0090419\
 Data File : P0060356.D
 Signal(s) : Signal #1: ECD1A.CH Signal #2: ECD2B.CH
 Acq On : 05 Sep 2019 3:08
 Operator : SM/AJ
 Sample : K4671-01 5X
 Misc :
 ALS Vial : 44 Sample Multiplier: 1

Instrument :
 ECD_O
 Client Sampled :
 WC-1

Integration File signal 1: autoint1.e
 Integration File signal 2: autoint2.e
 Quant Time: Sep 05 05:06:46 2019
 Quant Method : Z:\pestpcbsrv\HPCHEM1\ECD_O\methods\P0081719.M
 Quant Title : GC EXTRACTABLES
 QLast Update : Fri Aug 30 18:12:46 2019
 Response via : Initial Calibration
 Integrator: ChemStation 6890 Scale Mode: Small noise peaks clipped

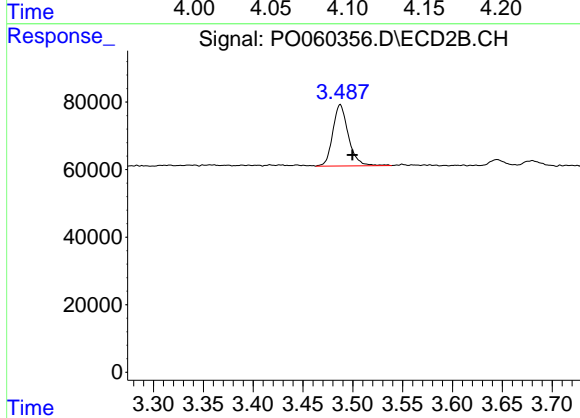
Volume Inj. : 2 µl
 Signal #1 Phase : ZB-MR1 Signal #2 Phase: ZB-MR2
 Signal #1 Info : 30Mx0.32mmx 0.50µ Signal #2 Info : 30M x 0.32mm x 0.25µm



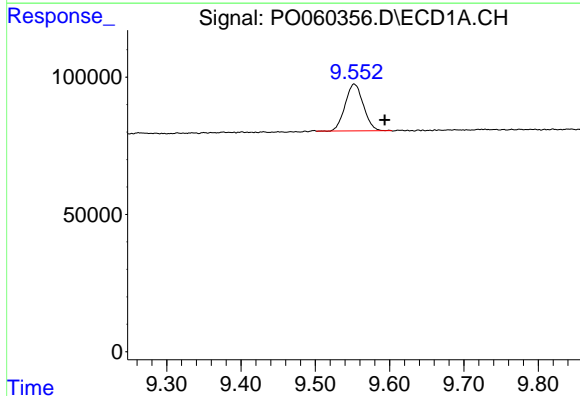


#1 Tetrachloro-m-xylene
 R.T.: 4.105 min
 Delta R.T.: -0.019 min
 Response: 208672
 Conc: 5.96 ng/ml

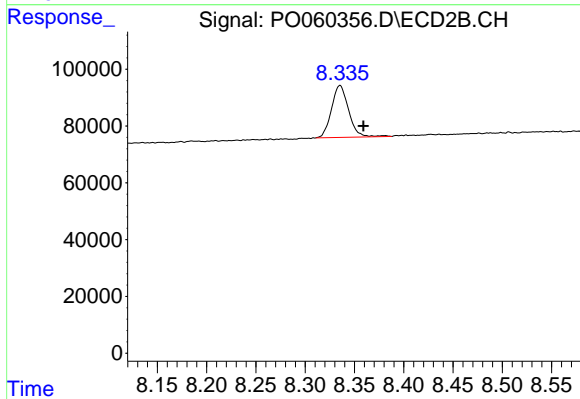
Instrument :
 ECD_O
 ClientSampleId :
 WC-1



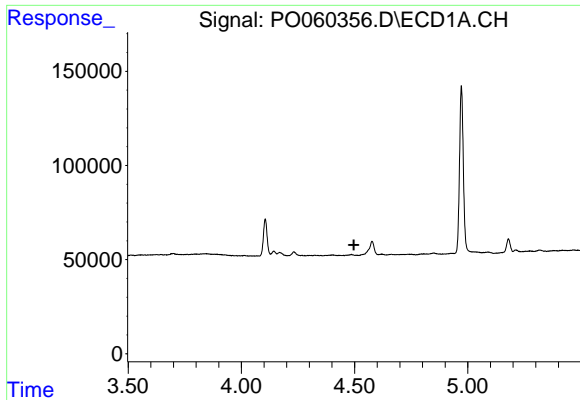
#1 Tetrachloro-m-xylene
 R.T.: 3.487 min
 Delta R.T.: -0.012 min
 Response: 197568
 Conc: 5.49 ng/ml



#2 Decachlorobiphenyl
 R.T.: 9.552 min
 Delta R.T.: -0.041 min
 Response: 290491
 Conc: 5.46 ng/ml



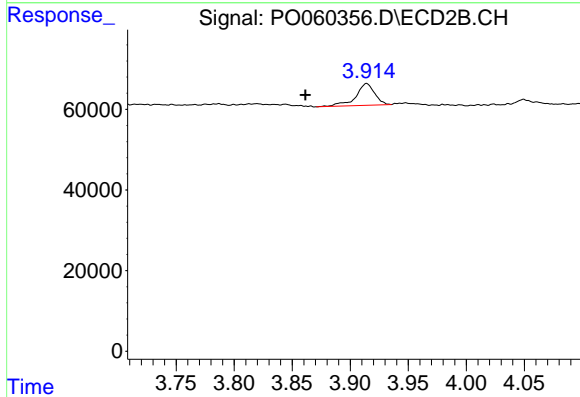
#2 Decachlorobiphenyl
 R.T.: 8.335 min
 Delta R.T.: -0.024 min
 Response: 220847
 Conc: 5.48 ng/ml



#10 AR-1221-3

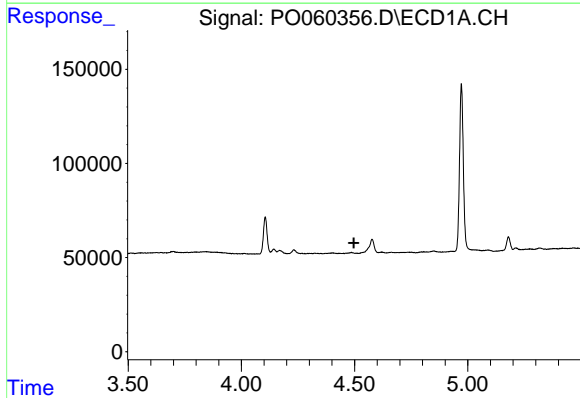
R.T.: 0.000 min
 Exp R.T. : 4.497 min
 Response: 0
 Conc: N.D.

Instrument :
 ECD_O
 ClientSampled :
 WC-1



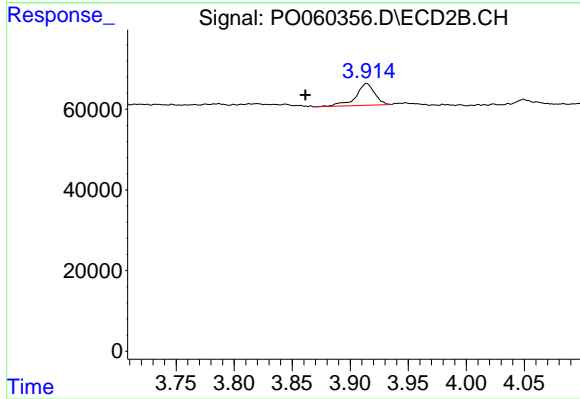
#10 AR-1221-3

R.T.: 3.914 min
 Delta R.T.: 0.053 min
 Response: 60619
 Conc: 61.95 ng/ml



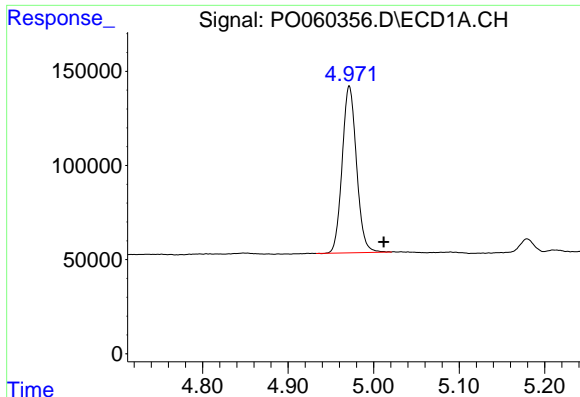
#11 AR-1232-1

R.T.: 0.000 min
 Exp R.T. : 4.497 min
 Response: 0
 Conc: N.D.



#11 AR-1232-1

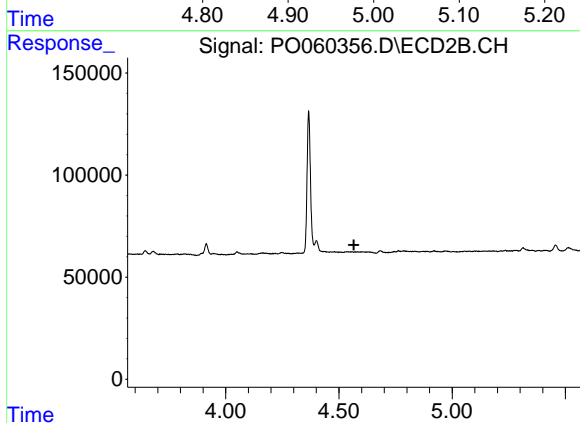
R.T.: 3.914 min
 Delta R.T.: 0.053 min
 Response: 60619
 Conc: 53.17 ng/ml



#12 AR-1232-2

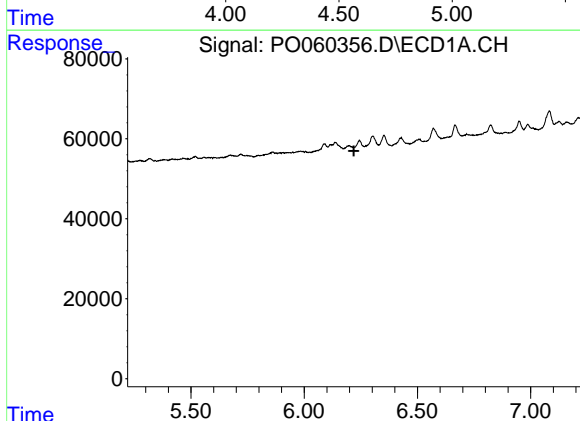
R.T.: 4.972 min
Delta R.T.: -0.040 min
Response: 1030423
Conc: 1458.70 ng/ml

Instrument :
ECD_O
ClientSampled :
WC-1



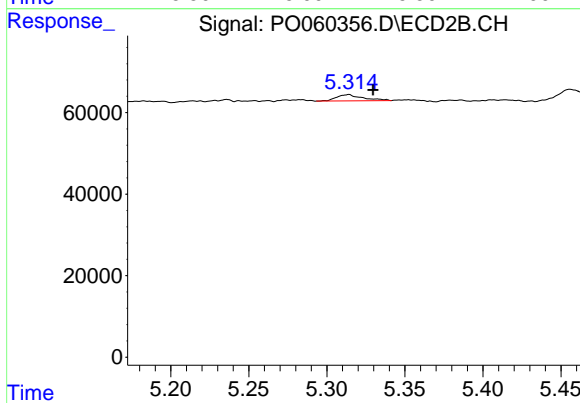
#12 AR-1232-2

R.T.: 0.000 min
Exp R.T. : 4.566 min
Response: 0
Conc: N.D.



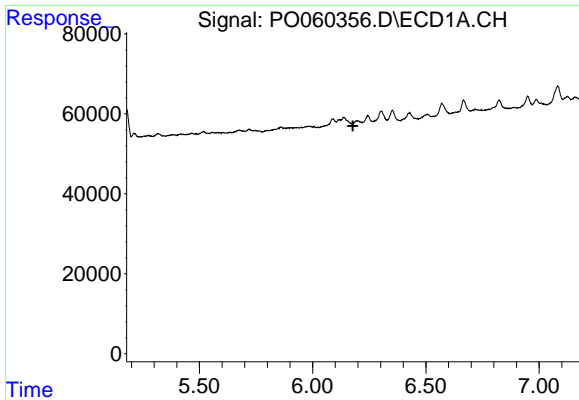
#20 AR-1242-5

R.T.: 0.000 min
Exp R.T. : 6.219 min
Response: 0
Conc: N.D.



#20 AR-1242-5

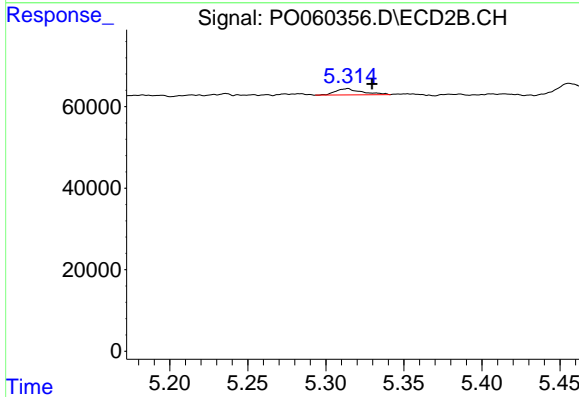
R.T.: 5.314 min
Delta R.T.: -0.016 min
Response: 18406
Conc: 16.45 ng/ml



#25 AR-1248-5

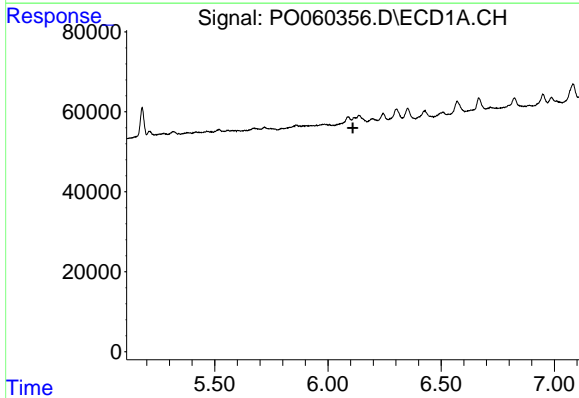
R.T.: 0.000 min
 Exp R.T.: 6.178 min
 Response: 0
 Conc: N.D.

Instrument :
 ECD_O
 ClientSampled :
 WC-1



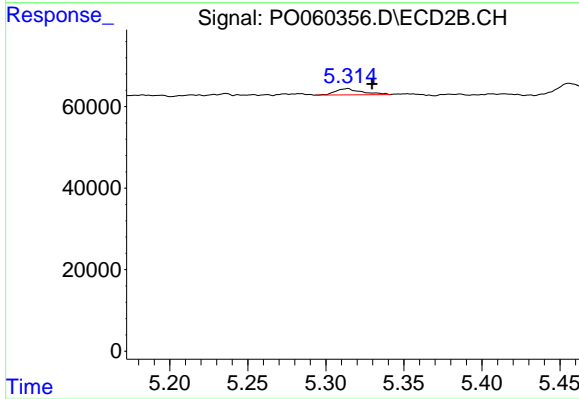
#25 AR-1248-5

R.T.: 5.314 min
 Delta R.T.: -0.016 min
 Response: 18406
 Conc: 12.86 ng/ml



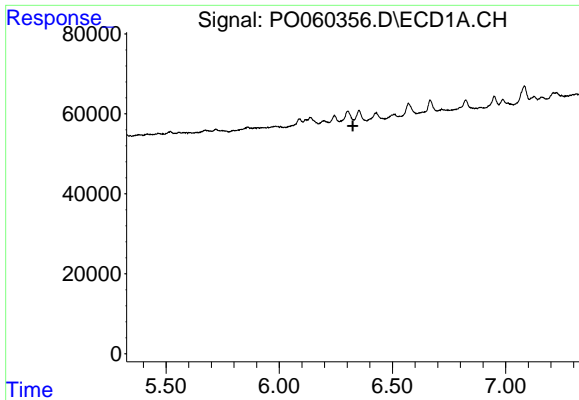
#26 AR-1254-1

R.T.: 0.000 min
 Exp R.T.: 6.111 min
 Response: 0
 Conc: N.D.



#26 AR-1254-1

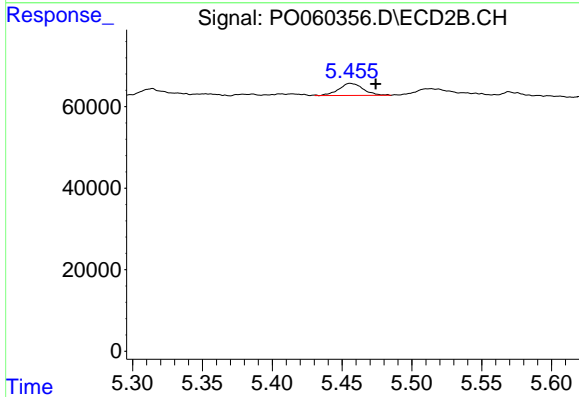
R.T.: 5.314 min
 Delta R.T.: -0.016 min
 Response: 18406
 Conc: 7.76 ng/ml



#27 AR-1254-2

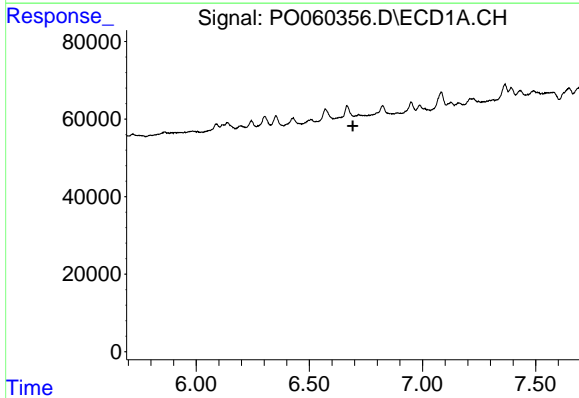
R.T.: 0.000 min
 Exp R.T.: 6.325 min
 Response: 0
 Conc: N.D.

Instrument :
 ECD_O
 ClientSampleId :
 WC-1



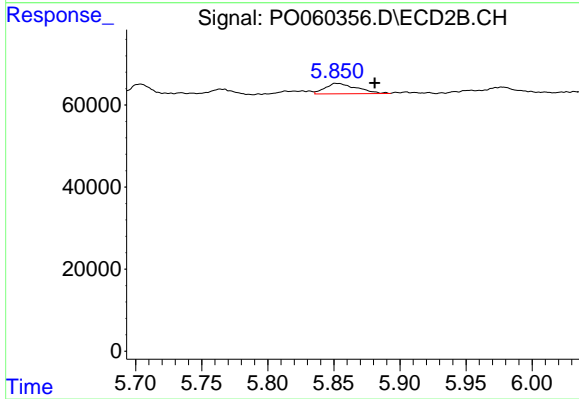
#27 AR-1254-2

R.T.: 5.456 min
 Delta R.T.: -0.018 min
 Response: 36030
 Conc: 17.17 ng/ml



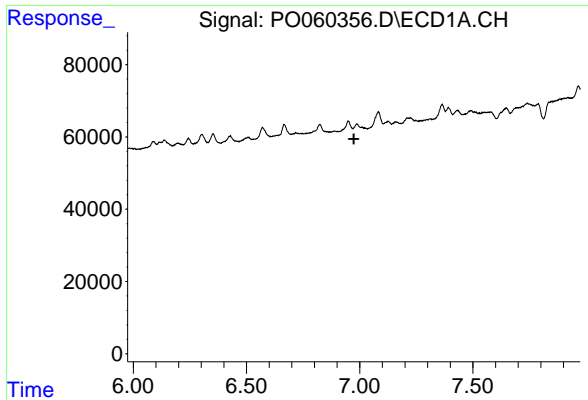
#28 AR-1254-3

R.T.: 0.000 min
 Exp R.T.: 6.692 min
 Response: 0
 Conc: N.D.



#28 AR-1254-3

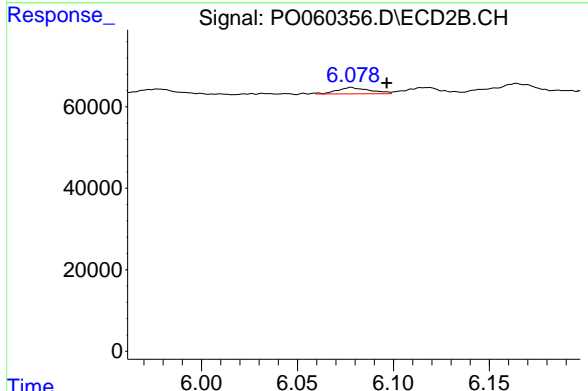
R.T.: 5.853 min
 Delta R.T.: -0.028 min
 Response: 41910
 Conc: 12.46 ng/ml



#29 AR-1254-4

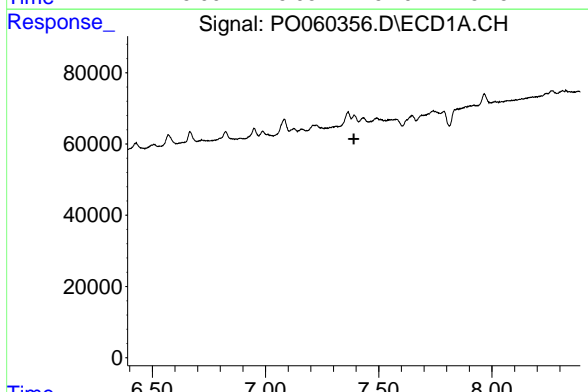
R.T.: 0.000 min
 Exp R.T.: 6.974 min
 Response: 0
 Conc: N.D.

Instrument :
 ECD_O
 ClientSampled :
 WC-1



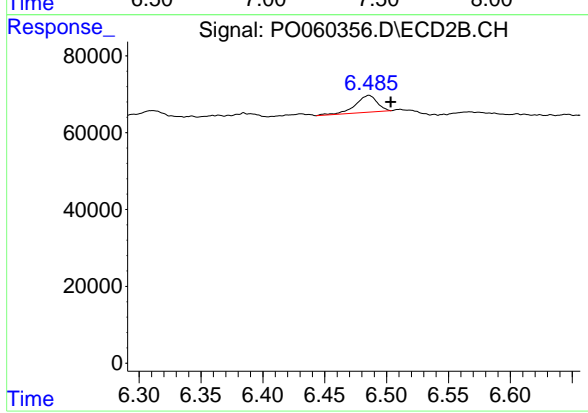
#29 AR-1254-4

R.T.: 6.078 min
 Delta R.T.: -0.019 min
 Response: 18829
 Conc: 9.13 ng/ml



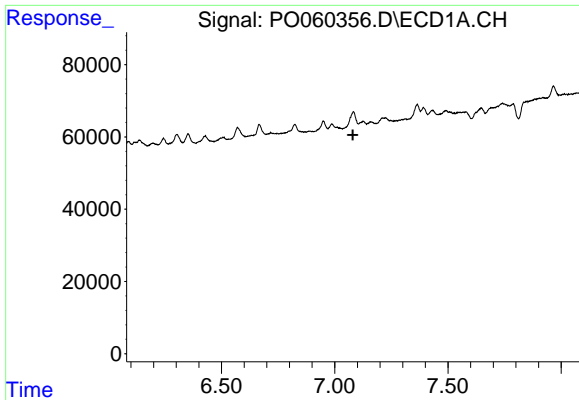
#30 AR-1254-5

R.T.: 0.000 min
 Exp R.T.: 7.390 min
 Response: 0
 Conc: N.D.



#30 AR-1254-5

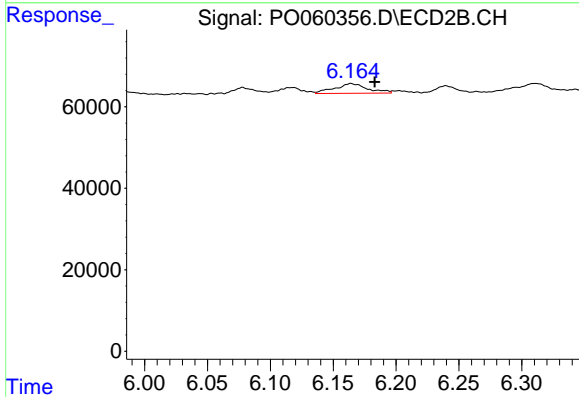
R.T.: 6.486 min
 Delta R.T.: -0.017 min
 Response: 53864
 Conc: 17.35 ng/ml



#32 AR-1260-2

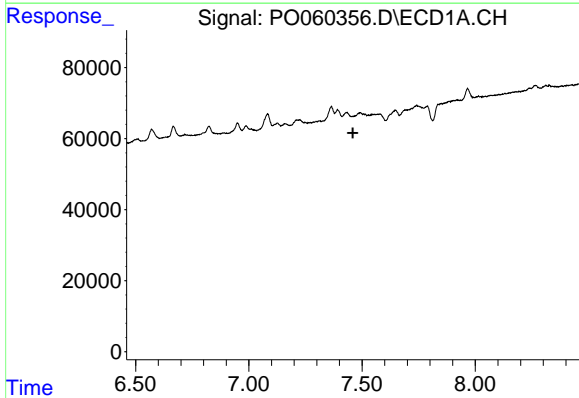
R.T.: 0.000 min
 Exp R.T.: 7.080 min
 Response: 0
 Conc: N.D.

Instrument :
 ECD_O
 ClientSampled :
 WC-1



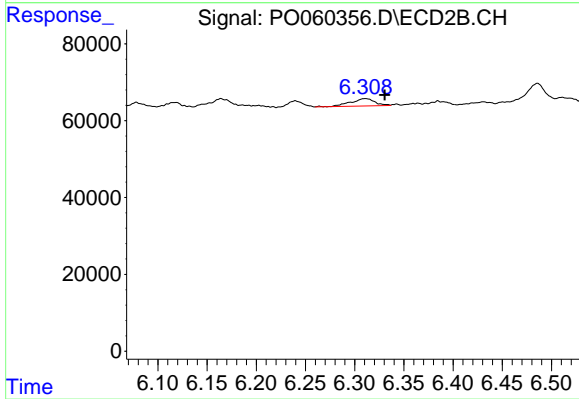
#32 AR-1260-2

R.T.: 6.164 min
 Delta R.T.: -0.019 min
 Response: 43227
 Conc: 14.75 ng/ml



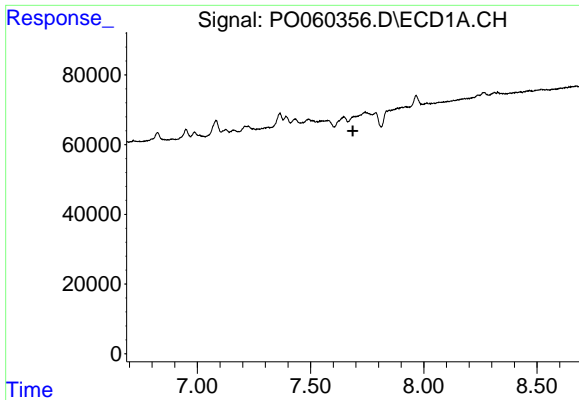
#33 AR-1260-3

R.T.: 0.000 min
 Exp R.T.: 7.460 min
 Response: 0
 Conc: N.D.



#33 AR-1260-3

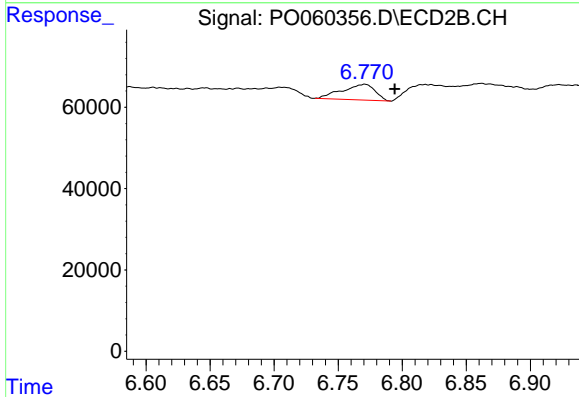
R.T.: 6.311 min
 Delta R.T.: -0.020 min
 Response: 33196
 Conc: 12.53 ng/ml



#34 AR-1260-4

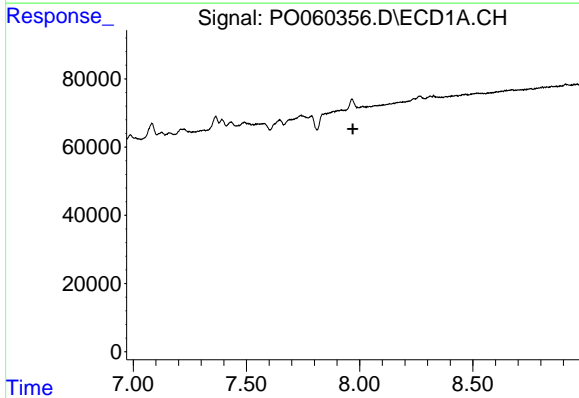
R.T.: 0.000 min
 Exp R.T. : 7.687 min
 Response: 0
 Conc: N.D.

Instrument :
 ECD_O
 ClientSampled :
 WC-1



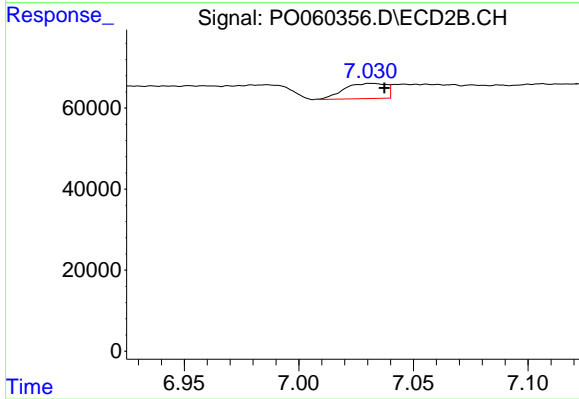
#34 AR-1260-4

R.T.: 6.771 min
 Delta R.T.: -0.023 min
 Response: 69075
 Conc: 30.53 ng/ml



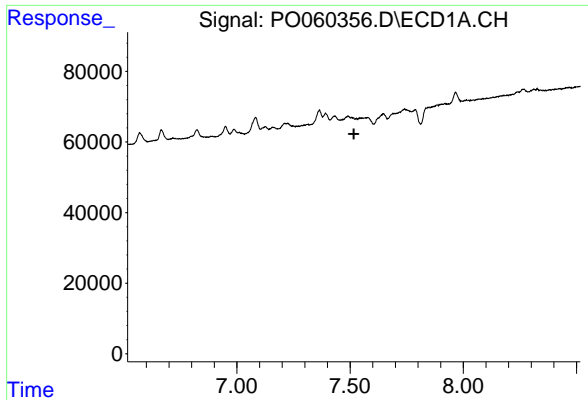
#35 AR-1260-5

R.T.: 0.000 min
 Exp R.T. : 7.970 min
 Response: 0
 Conc: N.D.



#35 AR-1260-5

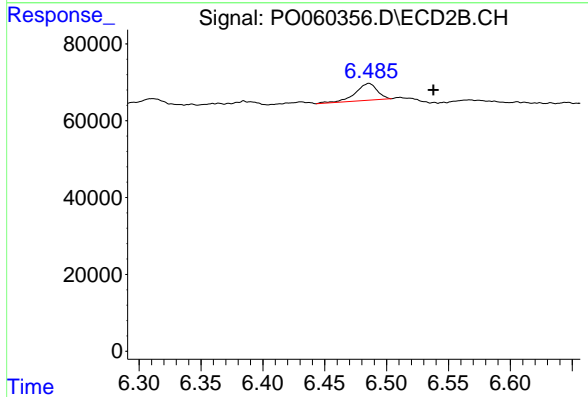
R.T.: 7.032 min
 Delta R.T.: -0.006 min
 Response: 47970
 Conc: 8.72 ng/ml



#36 AR-1262-1

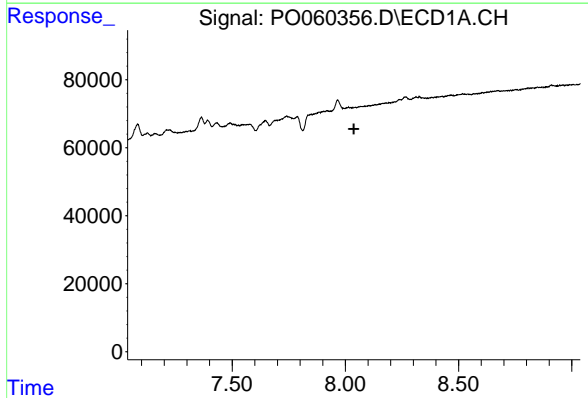
R.T.: 0.000 min
 Exp R.T. : 7.517 min
 Response: 0
 Conc: N.D.

Instrument :
 ECD_O
 ClientSampleId :
 WC-1



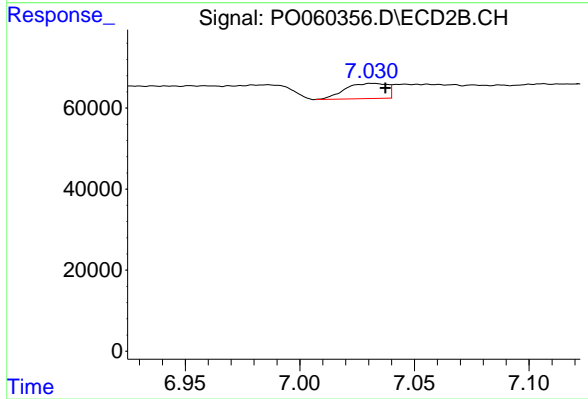
#36 AR-1262-1

R.T.: 6.486 min
 Delta R.T.: -0.052 min
 Response: 53864
 Conc: 14.45 ng/ml



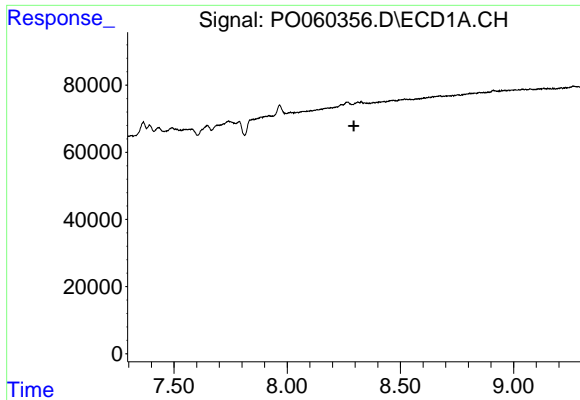
#37 AR-1262-2

R.T.: 0.000 min
 Exp R.T. : 8.037 min
 Response: 0
 Conc: N.D.



#37 AR-1262-2

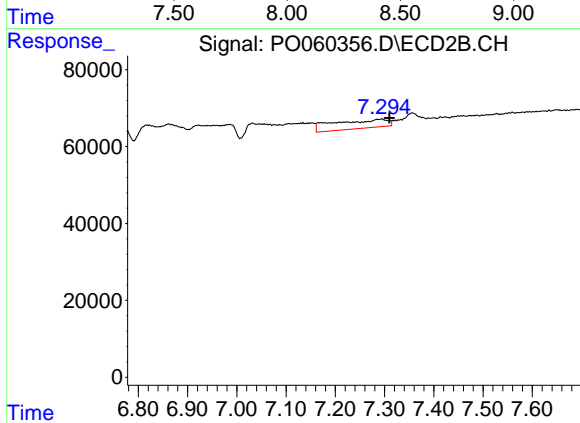
R.T.: 7.032 min
 Delta R.T.: -0.006 min
 Response: 47970
 Conc: 8.16 ng/ml



#38 AR-1262-3

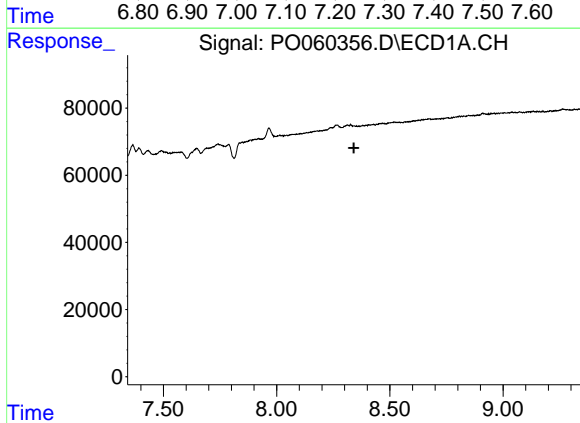
R.T.: 0.000 min
 Exp R.T.: 8.294 min
 Response: 0
 Conc: N.D.

Instrument :
 ECD_O
 ClientSampled :
 WC-1



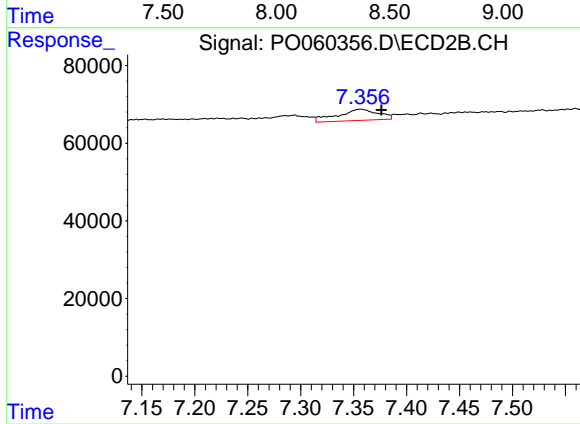
#38 AR-1262-3

R.T.: 7.293 min
 Delta R.T.: -0.017 min
 Response: 171011
 Conc: 67.30 ng/ml



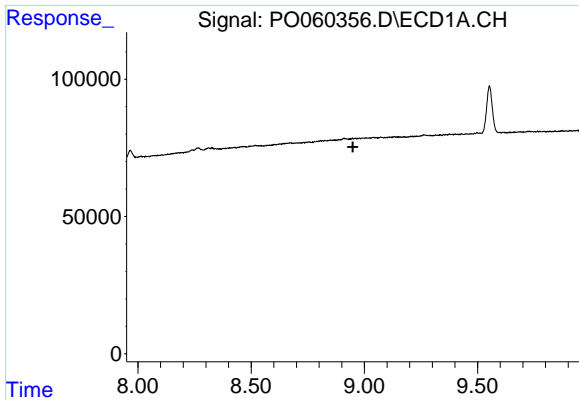
#39 AR-1262-4

R.T.: 0.000 min
 Exp R.T.: 8.341 min
 Response: 0
 Conc: N.D.



#39 AR-1262-4

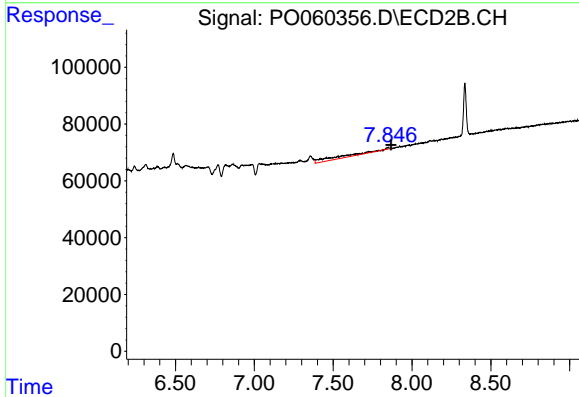
R.T.: 7.357 min
 Delta R.T.: -0.020 min
 Response: 76380
 Conc: 17.28 ng/ml



#40 AR-1262-5

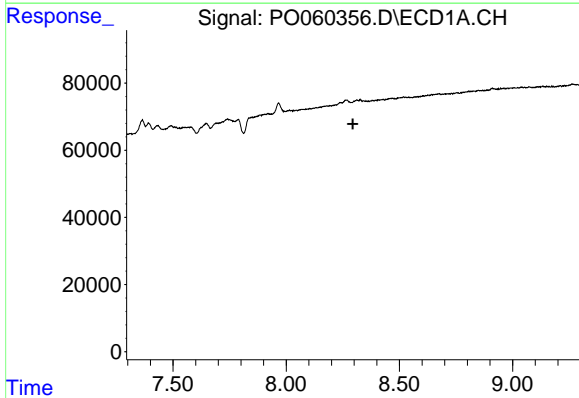
R.T.: 0.000 min
 Exp R.T. : 8.949 min
 Response: 0
 Conc: N.D.

Instrument :
 ECD_O
 ClientSampled :
 WC-1



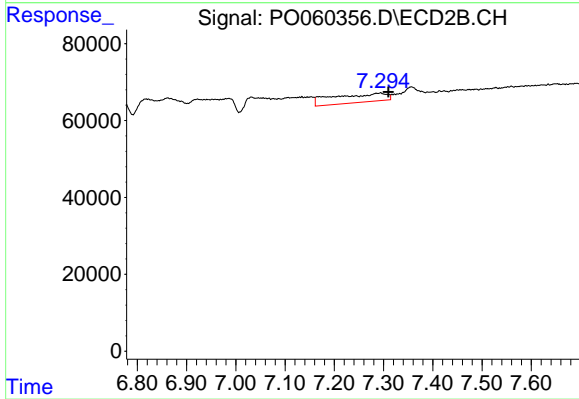
#40 AR-1262-5

R.T.: 7.848 min
 Delta R.T.: -0.021 min
 Response: 145506
 Conc: 80.59 ng/ml



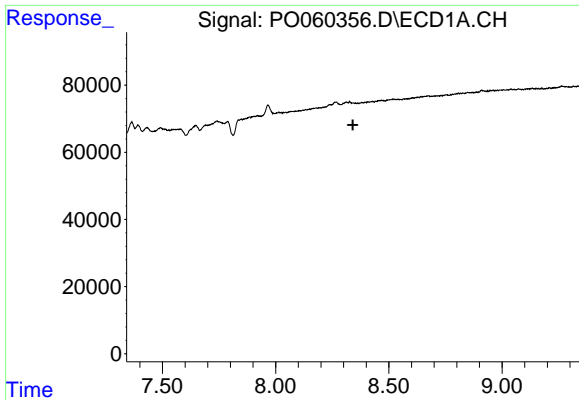
#41 AR-1268-1

R.T.: 0.000 min
 Exp R.T. : 8.294 min
 Response: 0
 Conc: N.D.



#41 AR-1268-1

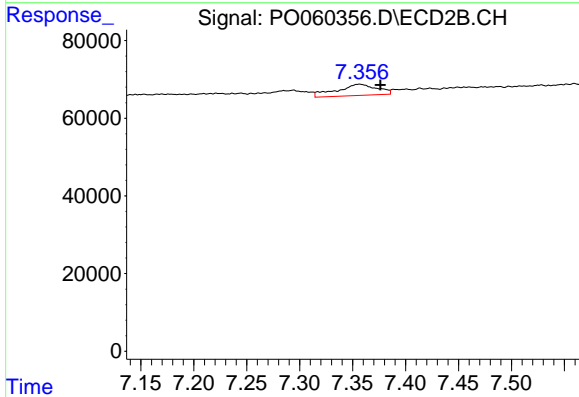
R.T.: 7.293 min
 Delta R.T.: -0.017 min
 Response: 171011
 Conc: 24.02 ng/ml



#42 AR-1268-2

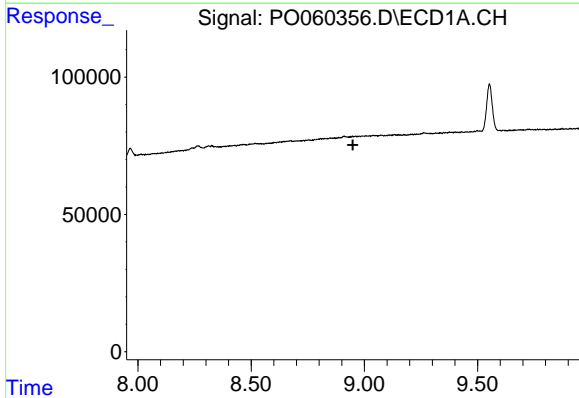
R.T.: 0.000 min
 Exp R.T. : 8.341 min
 Response: 0
 Conc: N.D.

Instrument :
 ECD_O
 ClientSampled :
 WC-1



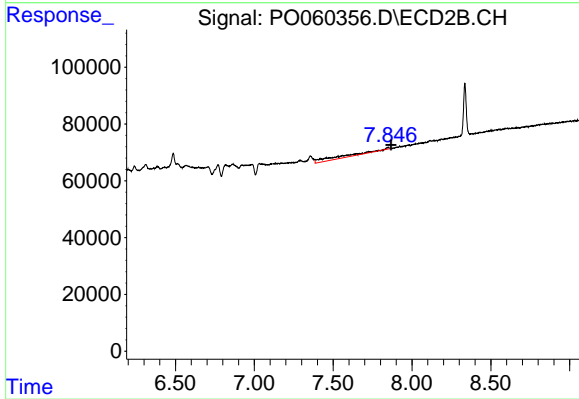
#42 AR-1268-2

R.T.: 7.357 min
 Delta R.T.: -0.020 min
 Response: 76380
 Conc: 11.85 ng/ml



#44 AR-1268-4

R.T.: 0.000 min
 Exp R.T. : 8.949 min
 Response: 0
 Conc: N.D.



#44 AR-1268-4

R.T.: 7.848 min
 Delta R.T.: -0.021 min
 Response: 145506
 Conc: 71.28 ng/ml