

Data Path : Z:\pestpcbsrv\HPCHEM1\ECD_0\Data\P0090424\
 Data File : PO106139.D
 Signal(s) : Signal #1: ECD1A.ch Signal #2: ECD2B.ch
 Acq On : 04 Sep 2024 09:47
 Operator : YP/AJ
 Sample : AR1660CCC500
 Misc :
 ALS Vial : 3 Sample Multiplier: 1

Instrument :
 ECD_0
 ClientSampleId :
 AR1660CCC500

Integration File signal 1: autoint1.e
 Integration File signal 2: autoint2.e
 Quant Time: Sep 05 01:31:31 2024
 Quant Method : Z:\pestpcbsrv\HPCHEM1\ECD_0\methods\P0082624.M
 Quant Title : GC EXTRACTABLES
 QLast Update : Tue Aug 27 06:50:58 2024
 Response via : Initial Calibration
 Integrator: ChemStation

Volume Inj. : 2 µl
 Signal #1 Phase : ZB-MR1 Signal #2 Phase: ZB-MR2
 Signal #1 Info : 30Mx0.32mmx 0.50µ Signal #2 Info : 30M x 0.32mm x 0.25µm

Compound	RT#1	RT#2	Resp#1	Resp#2	ng/ml	ng/ml
System Monitoring Compounds						
1) SA Tetrachlo...	4.453	3.717	428.9E6	139.1E6	47.015	51.467
2) SA Decachlor...	10.189	8.746	276.2E6	116.1E6	50.887	53.183
Target Compounds						
3) L1 AR-1016-1	5.616	4.806	147.6E6	49955642	466.917	522.542
4) L1 AR-1016-2	5.639	4.826	209.0E6	67028068	475.520	528.176
5) L1 AR-1016-3	5.700	5.003	126.4E6	35573578	470.253	508.521
6) L1 AR-1016-4	5.799	5.043	101.9E6	27200095	462.752	505.810
7) L1 AR-1016-5	6.092	5.258	93411222	33220892	439.060	482.784
8) L2 AR-1221-1	4.653	3.929	15216233	4331749	138.229	141.962
9) L2 AR-1221-2	4.744	4.017	22600404	5977855	268.863	261.555
10) L2 AR-1221-3	4.820	4.093	77582372	24406250	320.525	341.968
11) L3 AR-1232-1	4.820	4.093	77582372	24406250	382.666	415.465
12) L3 AR-1232-2	5.349	4.826	106.4E6	67028068	979.504	1186.915
13) L3 AR-1232-3	5.639	5.003	209.0E6	35573578	1059.726	1151.323
14) L3 AR-1232-4	5.799	5.085	101.9E6	33688584	1034.648	1246.838
15) L3 AR-1232-5	5.889	5.258	88367293	33220892	1160.749	1123.581
16) L4 AR-1242-1	5.616	4.826	147.6E6	67028068	609.984	942.450 #
17) L4 AR-1242-2	5.639	4.857	209.0E6	4133841	629.381	44.118 #
18) L4 AR-1242-3	5.700	5.043	126.4E6	27200095	615.449	533.381
19) L4 AR-1242-4	5.799	5.118	101.9E6	11044392	607.198	215.423 #
20) L4 AR-1242-5	6.533	5.652	14110977	4635193	82.827	71.716
21) L5 AR-1248-1	5.616	4.806	147.6E6	49955642	784.969	891.921
22) L5 AR-1248-2	5.889	5.043	88367293	27200095	341.994	365.386
23) L5 AR-1248-3	6.092	5.085	93411222	33688584	327.046	428.916 #
24) L5 AR-1248-4	6.494	5.258	14319705	33220892	45.417	356.783 #
25) L5 AR-1248-5	6.533	5.652	14110977	4635193	46.488	50.583
26) L6 AR-1254-1	6.469	5.611	69305784	28490629	224.503	211.162
27) L6 AR-1254-2	6.686	5.757	71054750	26583815	154.224	219.030 #
28) L6 AR-1254-3	7.052	6.177	46191982	57639925	97.778	299.026 #
29) L6 AR-1254-4	7.336	6.390	32468329	5221958	93.207	43.060 #
30) L6 AR-1254-5	7.753	6.807	205.1E6	91883948	561.690	519.682
31) L7 AR-1260-1	7.215	6.292	177.2E6	67387377	493.826	511.510
32) L7 AR-1260-2	7.471	6.479	189.8E6	82737278	451.853	504.158
33) L7 AR-1260-3	7.830	6.633	110.5E6	77283760	413.269	457.933
34) L7 AR-1260-4	8.055	7.106	133.4E6	52724151	430.306	475.759
35) L7 AR-1260-5	8.374	7.345	252.9E6	130.3E6	454.522	480.219
36) L8 AR-1262-1	7.753	6.807	205.1E6	91883948	706.198	953.138 #
37) L8 AR-1262-2	8.374	7.106	252.9E6	52724151	351.656	339.406
38) L8 AR-1262-3	8.700	7.630	162.7E6	18528056	337.579	162.837 #
39) L8 AR-1262-4	8.776	7.692	36154378	90792395	100.796	381.020 #
40) L8 AR-1262-5	9.432	8.187	64622679	27404416	251.319	249.979
41) L9 AR-1268-1	8.700	7.630	162.7E6	18528056	198.827	53.946 #

Data Path : Z:\pestpcbsrv\HPCHEM1\ECD_0\Data\P0090424\
 Data File : P0106139.D
 Signal(s) : Signal #1: ECD1A.ch Signal #2: ECD2B.ch
 Acq On : 04 Sep 2024 09:47
 Operator : YP/AJ
 Sample : AR1660CCC500
 Misc :
 ALS Vial : 3 Sample Multiplier: 1

Instrument :
 ECD_0
 ClientSampleId :
 AR1660CCC500

Integration File signal 1: autoint1.e
 Integration File signal 2: autoint2.e
 Quant Time: Sep 05 01:31:31 2024
 Quant Method : Z:\pestpcbsrv\HPCHEM1\ECD_0\methods\P0082624.M
 Quant Title : GC EXTRACTABLES
 QLast Update : Tue Aug 27 06:50:58 2024
 Response via : Initial Calibration
 Integrator: ChemStation

Volume Inj. : 2 µl
 Signal #1 Phase : ZB-MR1 Signal #2 Phase: ZB-MR2
 Signal #1 Info : 30Mx0.32mmx 0.50µ Signal #2 Info : 30M x 0.32mm x 0.25µm

	Compound	RT#1	RT#2	Resp#1	Resp#2	ng/ml	ng/ml
42)	L9 AR-1268-2	8.776	7.692	36154378	90792395	49.349	281.908 #
43)	L9 AR-1268-3	9.009	7.902	4855599	2102086	7.894	7.827
44)	L9 AR-1268-4	9.432	8.187	64622679	27404416	238.905	241.953
45)	L9 AR-1268-5	9.848	8.484	24311204	9438990	12.049	11.034

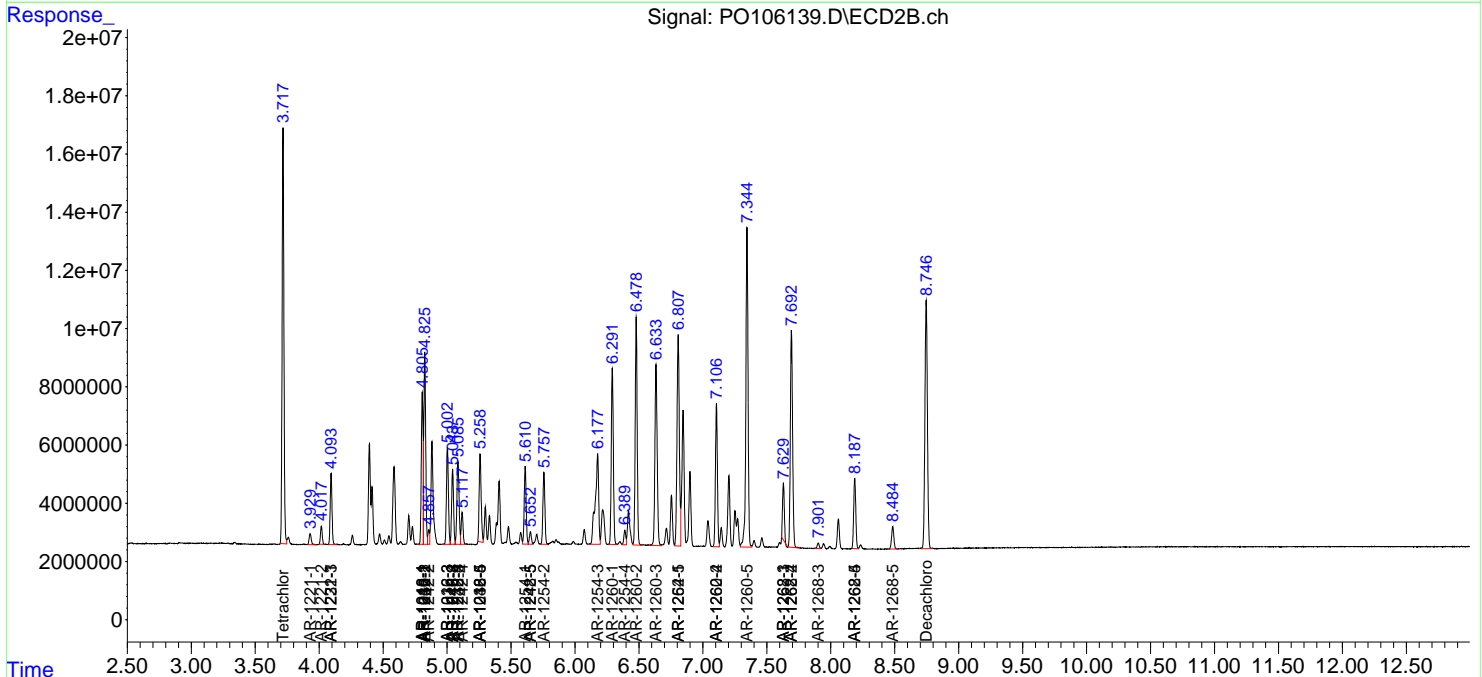
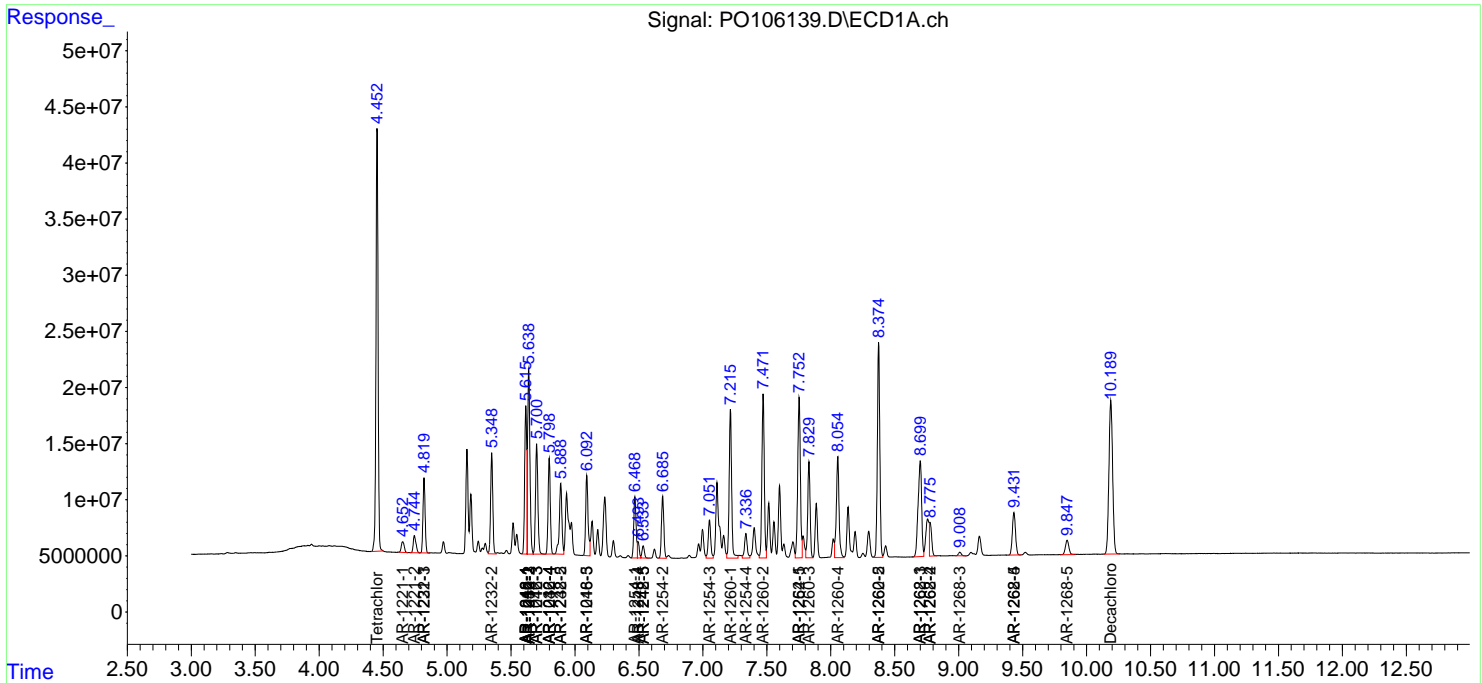
(f)=RT Delta > 1/2 Window (#)=Amounts differ by > 25% (m)=manual int.

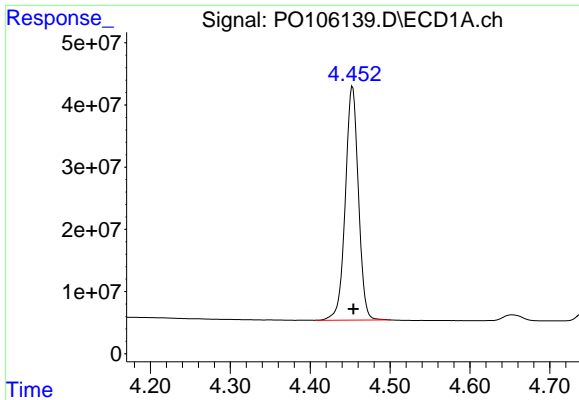
Data Path : Z:\pestpcbsrv\HPCHEM1\ECD_O\Data\PO090424\
 Data File : PO106139.D
 Signal(s) : Signal #1: ECD1A.ch Signal #2: ECD2B.ch
 Acq On : 04 Sep 2024 09:47
 Operator : YP/AJ
 Sample : AR1660CCC500
 Misc :
 ALS Vial : 3 Sample Multiplier: 1

Instrument :
 ECD_O
 ClientSampleId :
 AR1660CCC500

Integration File signal 1: autoint1.e
 Integration File signal 2: autoint2.e
 Quant Time: Sep 05 01:31:31 2024
 Quant Method : Z:\pestpcbsrv\HPCHEM1\ECD_O\methods\PO082624.M
 Quant Title : GC EXTRACTABLES
 QLast Update : Tue Aug 27 06:50:58 2024
 Response via : Initial Calibration
 Integrator: ChemStation

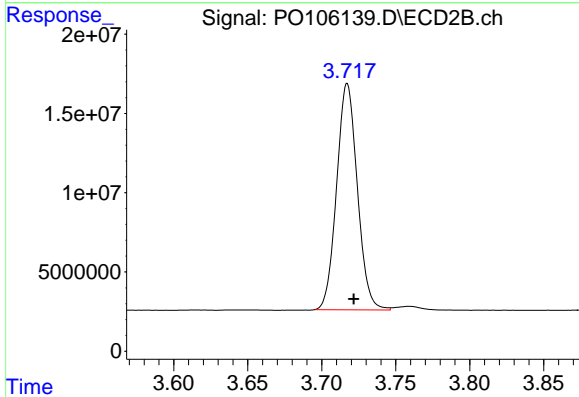
Volume Inj. : 2 µl
 Signal #1 Phase : ZB-MR1 Signal #2 Phase: ZB-MR2
 Signal #1 Info : 30Mx0.32mmx 0.50µ Signal #2 Info : 30M x 0.32mm x 0.25µm



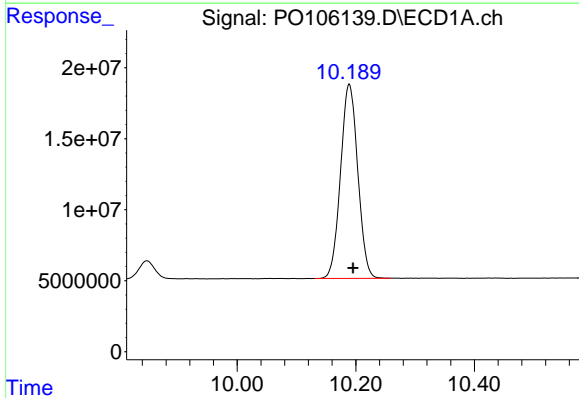


#1 Tetrachloro-m-xylene
 R.T.: 4.453 min
 Delta R.T.: -0.001 min
 Response: 428933315
 Conc: 47.02 ng/ml

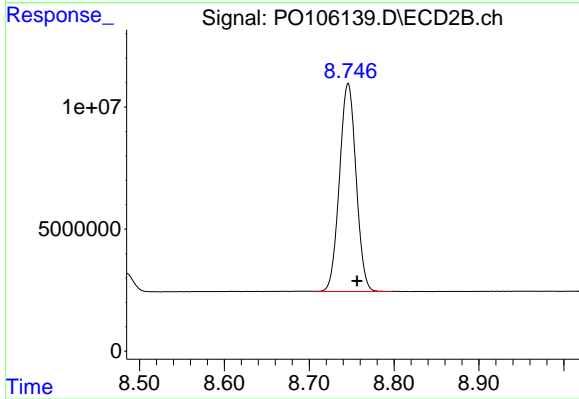
Instrument :
 ECD_O
 ClientSampleId :
 AR1660CCC500



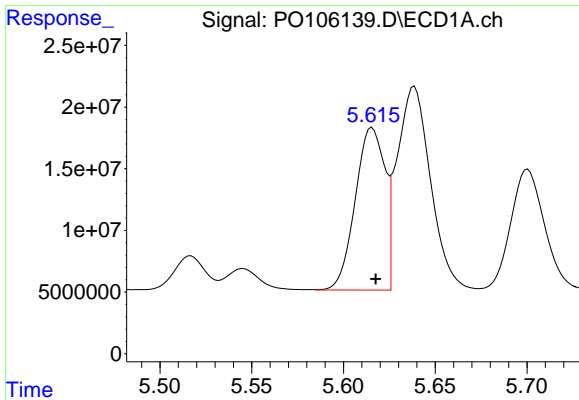
#1 Tetrachloro-m-xylene
 R.T.: 3.717 min
 Delta R.T.: -0.004 min
 Response: 139052645
 Conc: 51.47 ng/ml



#2 Decachlorobiphenyl
 R.T.: 10.189 min
 Delta R.T.: -0.006 min
 Response: 276158102
 Conc: 50.89 ng/ml



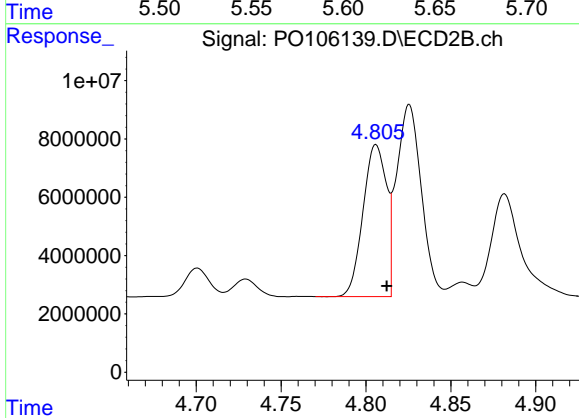
#2 Decachlorobiphenyl
 R.T.: 8.746 min
 Delta R.T.: -0.011 min
 Response: 116100187
 Conc: 53.18 ng/ml



#3 AR-1016-1

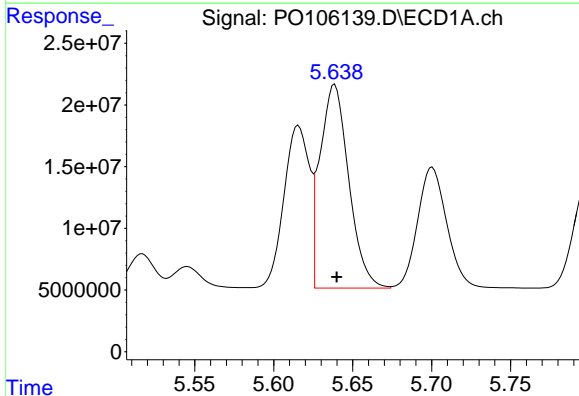
R.T.: 5.616 min
 Delta R.T.: -0.002 min
 Response: 147570519
 Conc: 466.92 ng/ml

Instrument :
 ECD_O
 ClientSampleId :
 AR1660CCC500



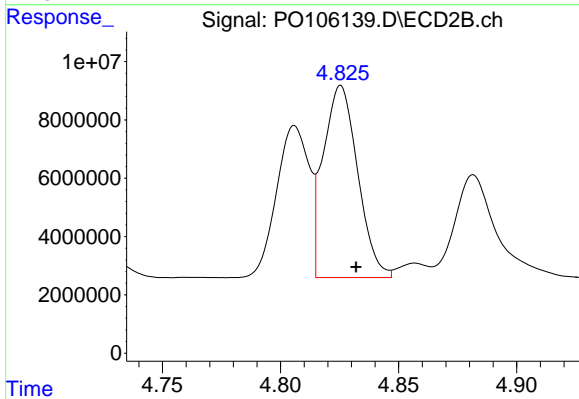
#3 AR-1016-1

R.T.: 4.806 min
 Delta R.T.: -0.006 min
 Response: 49955642
 Conc: 522.54 ng/ml



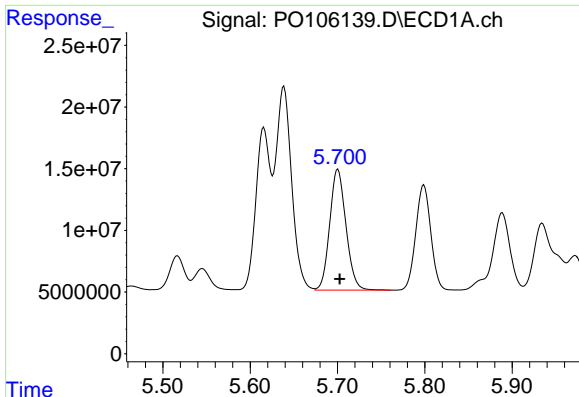
#4 AR-1016-2

R.T.: 5.639 min
 Delta R.T.: -0.001 min
 Response: 209033445
 Conc: 475.52 ng/ml



#4 AR-1016-2

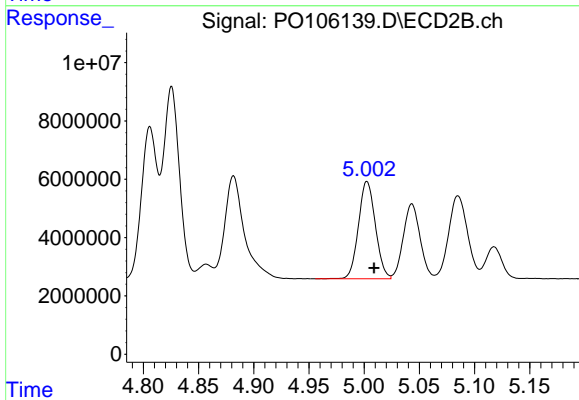
R.T.: 4.826 min
 Delta R.T.: -0.007 min
 Response: 67028068
 Conc: 528.18 ng/ml



#5 AR-1016-3

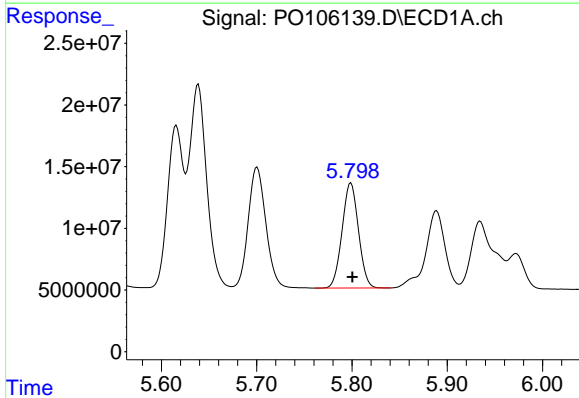
R.T.: 5.700 min
 Delta R.T.: -0.002 min
 Response: 126427705
 Conc: 470.25 ng/ml

Instrument :
 ECD_O
 ClientSampleId :
 AR1660CCC500



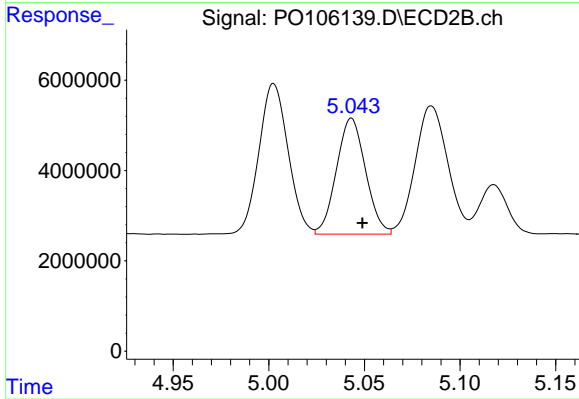
#5 AR-1016-3

R.T.: 5.003 min
 Delta R.T.: -0.007 min
 Response: 35573578
 Conc: 508.52 ng/ml



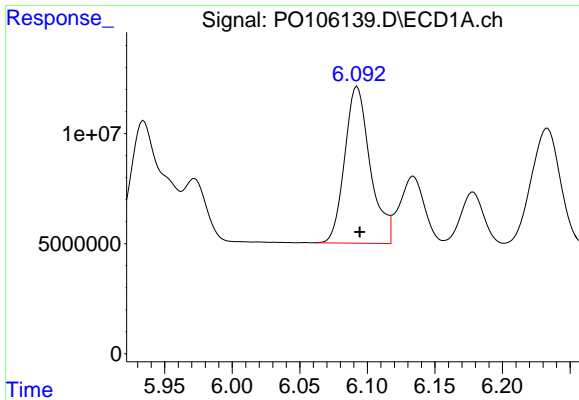
#6 AR-1016-4

R.T.: 5.799 min
 Delta R.T.: -0.001 min
 Response: 101868212
 Conc: 462.75 ng/ml



#6 AR-1016-4

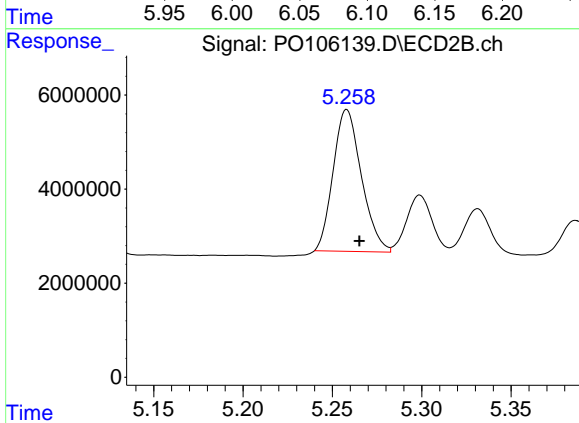
R.T.: 5.043 min
 Delta R.T.: -0.006 min
 Response: 27200095
 Conc: 505.81 ng/ml



#7 AR-1016-5

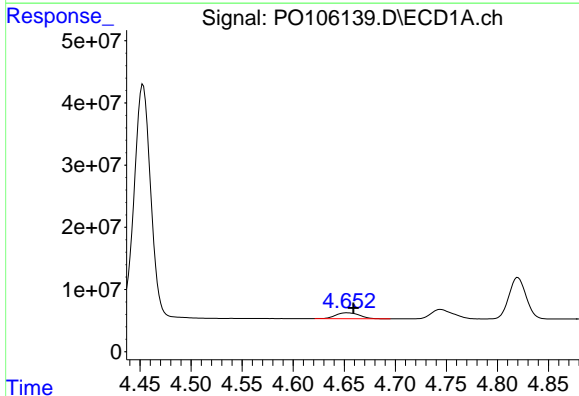
R.T.: 6.092 min
 Delta R.T.: -0.002 min
 Response: 93411222
 Conc: 439.06 ng/ml

Instrument :
 ECD_O
 ClientSampleId :
 AR1660CCC500



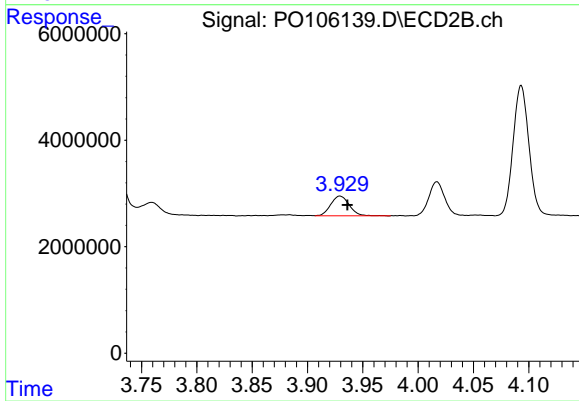
#7 AR-1016-5

R.T.: 5.258 min
 Delta R.T.: -0.007 min
 Response: 33220892
 Conc: 482.78 ng/ml



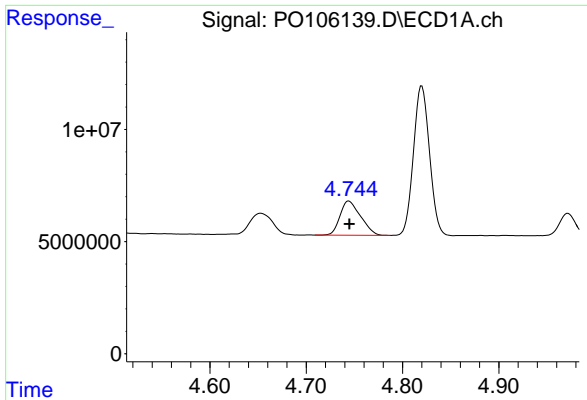
#8 AR-1221-1

R.T.: 4.653 min
 Delta R.T.: -0.006 min
 Response: 15216233
 Conc: 138.23 ng/ml



#8 AR-1221-1

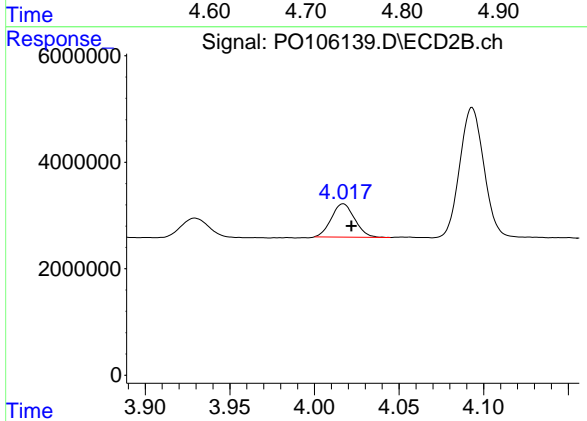
R.T.: 3.929 min
 Delta R.T.: -0.007 min
 Response: 4331749
 Conc: 141.96 ng/ml



#9 AR-1221-2

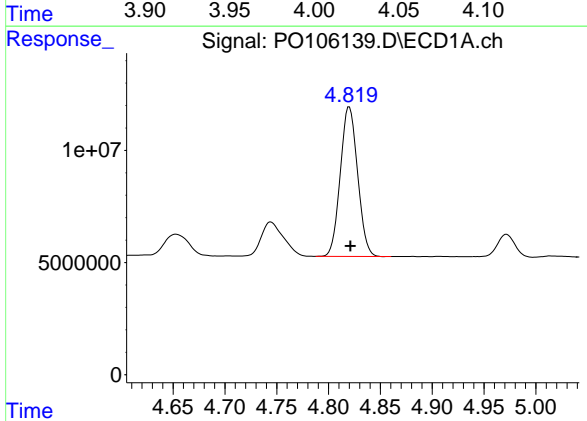
R.T.: 4.744 min
 Delta R.T.: 0.000 min
 Response: 22600404
 Conc: 268.86 ng/ml

Instrument :
 ECD_O
 ClientSampleId :
 AR1660CCC500



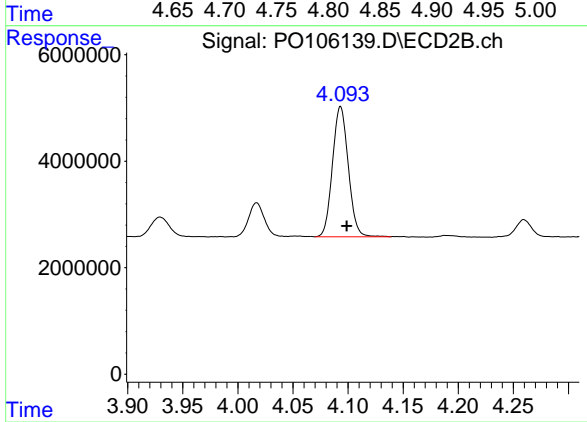
#9 AR-1221-2

R.T.: 4.017 min
 Delta R.T.: -0.005 min
 Response: 5977855
 Conc: 261.56 ng/ml



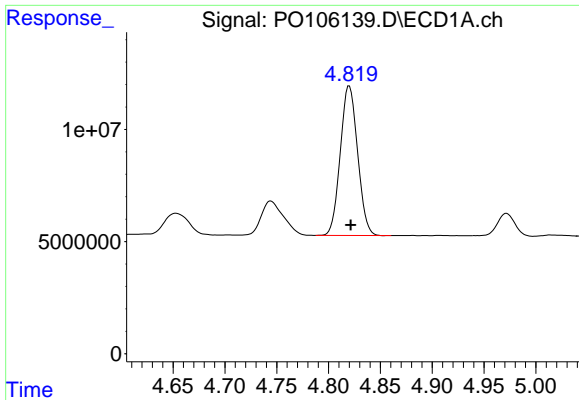
#10 AR-1221-3

R.T.: 4.820 min
 Delta R.T.: -0.001 min
 Response: 77582372
 Conc: 320.53 ng/ml



#10 AR-1221-3

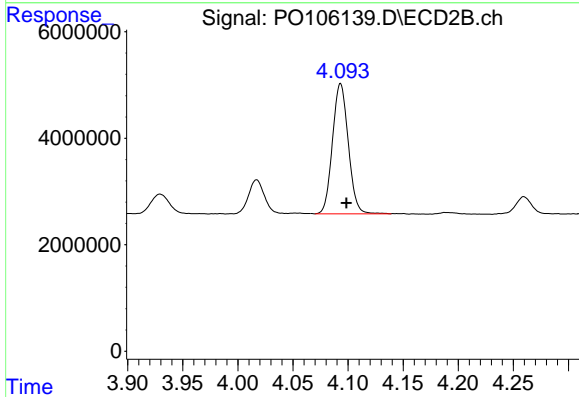
R.T.: 4.093 min
 Delta R.T.: -0.005 min
 Response: 24406250
 Conc: 341.97 ng/ml



#11 AR-1232-1

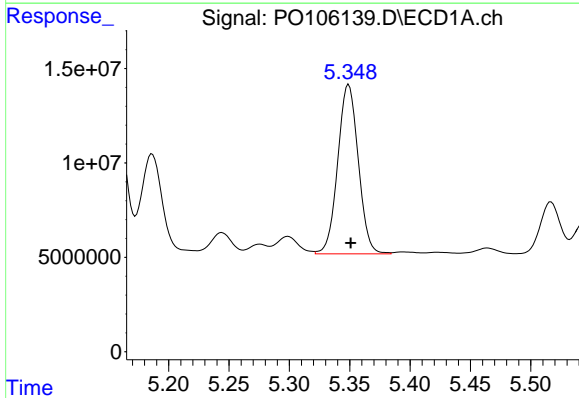
R.T.: 4.820 min
 Delta R.T.: -0.001 min
 Response: 77582372
 Conc: 382.67 ng/ml

Instrument :
 ECD_O
 ClientSampleId :
 AR1660CCC500



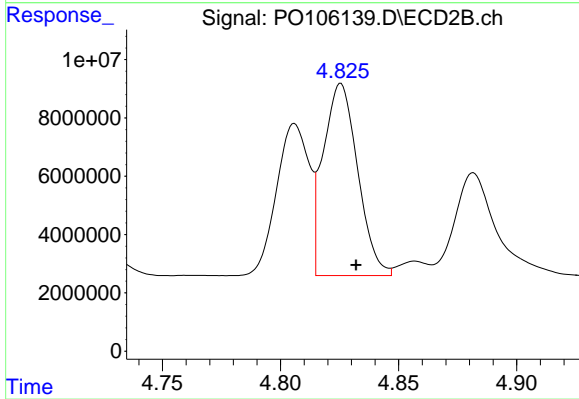
#11 AR-1232-1

R.T.: 4.093 min
 Delta R.T.: -0.005 min
 Response: 24406250
 Conc: 415.46 ng/ml



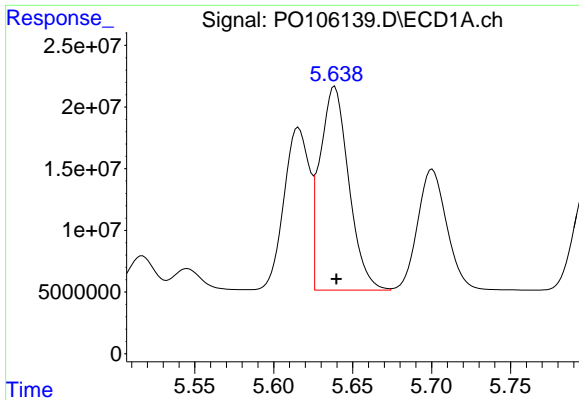
#12 AR-1232-2

R.T.: 5.349 min
 Delta R.T.: -0.002 min
 Response: 106418093
 Conc: 979.50 ng/ml



#12 AR-1232-2

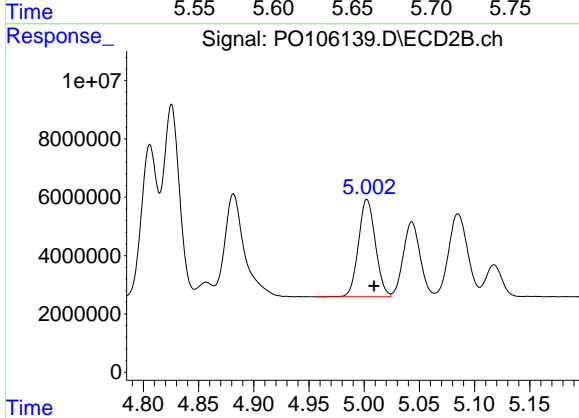
R.T.: 4.826 min
 Delta R.T.: -0.006 min
 Response: 67028068
 Conc: 1186.92 ng/ml



#13 AR-1232-3

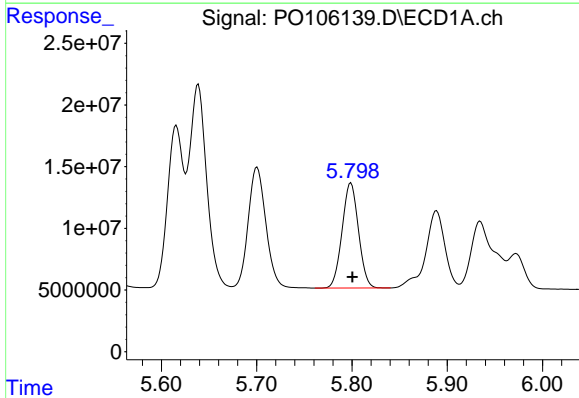
R.T.: 5.639 min
 Delta R.T.: 0.000 min
 Response: 209033445
 Conc: 1059.73 ng/ml

Instrument :
 ECD_O
 ClientSampleId :
 AR1660CCC500



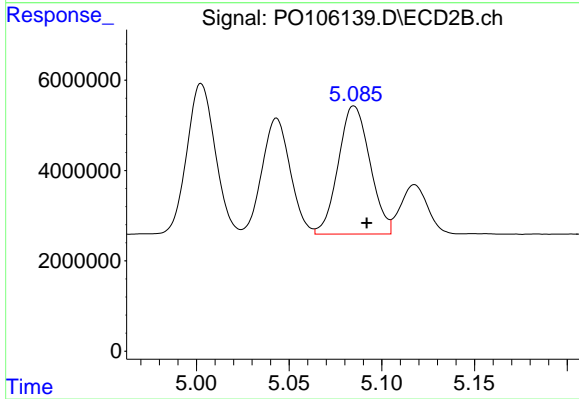
#13 AR-1232-3

R.T.: 5.003 min
 Delta R.T.: -0.006 min
 Response: 35573578
 Conc: 1151.32 ng/ml



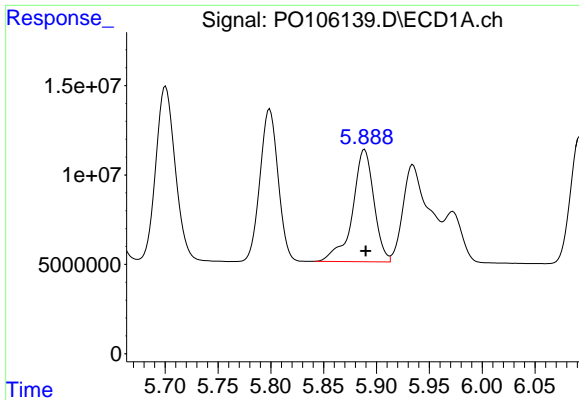
#14 AR-1232-4

R.T.: 5.799 min
 Delta R.T.: -0.002 min
 Response: 101868212
 Conc: 1034.65 ng/ml



#14 AR-1232-4

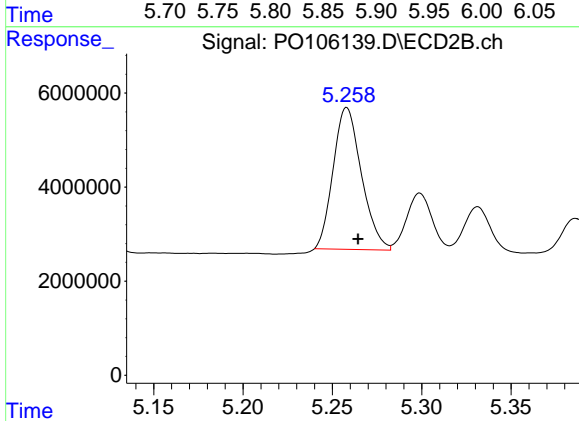
R.T.: 5.085 min
 Delta R.T.: -0.007 min
 Response: 33688584
 Conc: 1246.84 ng/ml



#15 AR-1232-5

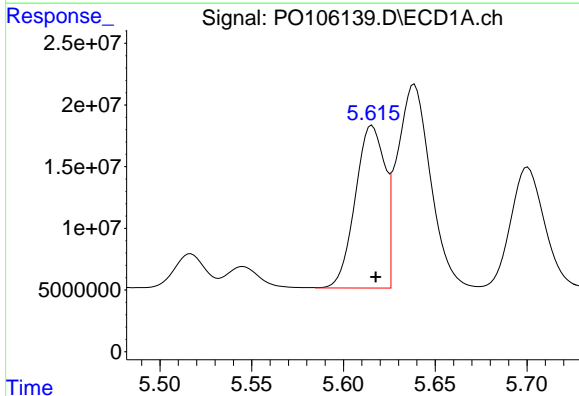
R.T.: 5.889 min
 Delta R.T.: 0.000 min
 Response: 88367293
 Conc: 1160.75 ng/ml

Instrument :
 ECD_O
 ClientSampleId :
 AR1660CCC500



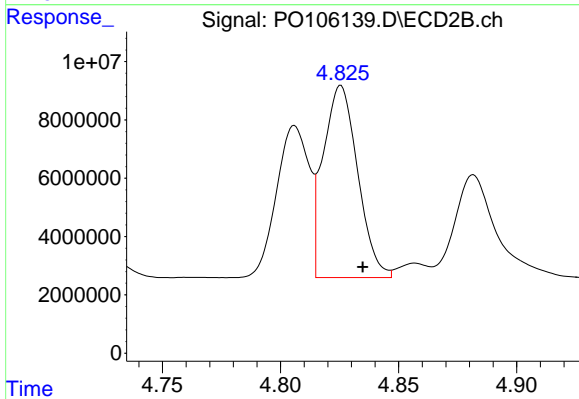
#15 AR-1232-5

R.T.: 5.258 min
 Delta R.T.: -0.006 min
 Response: 33220892
 Conc: 1123.58 ng/ml



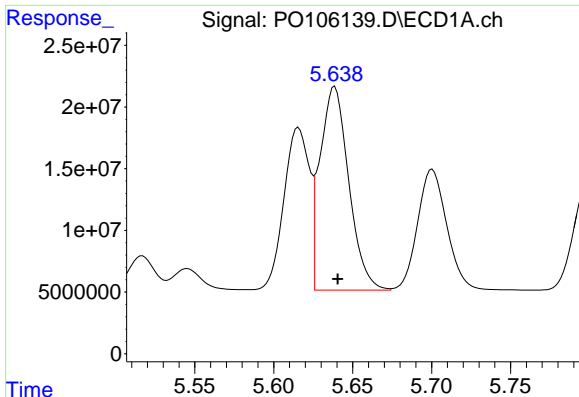
#16 AR-1242-1

R.T.: 5.616 min
 Delta R.T.: -0.002 min
 Response: 147570519
 Conc: 609.98 ng/ml



#16 AR-1242-1

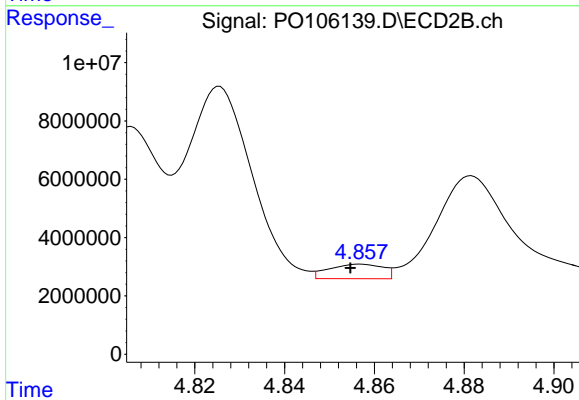
R.T.: 4.826 min
 Delta R.T.: -0.009 min
 Response: 67028068
 Conc: 942.45 ng/ml



#17 AR-1242-2

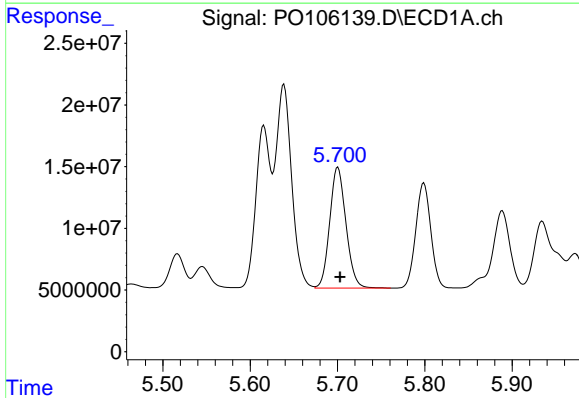
R.T.: 5.639 min
 Delta R.T.: -0.002 min
 Response: 209033445
 Conc: 629.38 ng/ml

Instrument :
 ECD_O
 ClientSampleId :
 AR1660CCC500



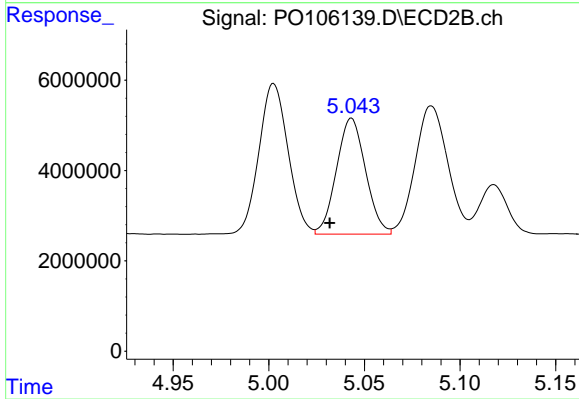
#17 AR-1242-2

R.T.: 4.857 min
 Delta R.T.: 0.002 min
 Response: 4133841
 Conc: 44.12 ng/ml



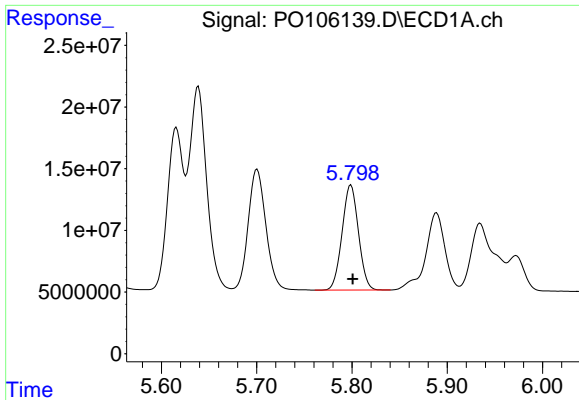
#18 AR-1242-3

R.T.: 5.700 min
 Delta R.T.: -0.002 min
 Response: 126427705
 Conc: 615.45 ng/ml



#18 AR-1242-3

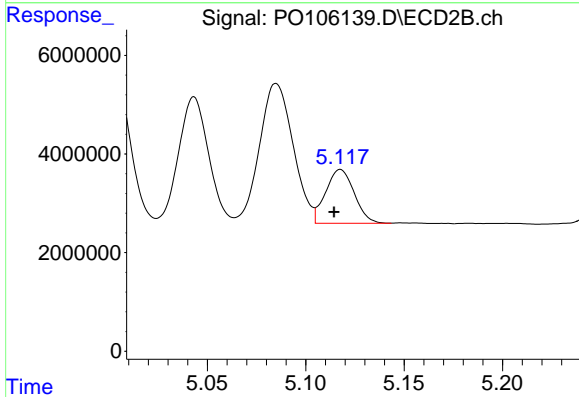
R.T.: 5.043 min
 Delta R.T.: 0.011 min
 Response: 27200095
 Conc: 533.38 ng/ml



#19 AR-1242-4

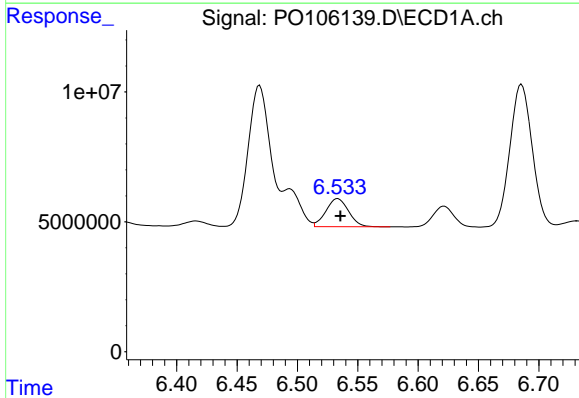
R.T.: 5.799 min
 Delta R.T.: -0.002 min
 Response: 101868212
 Conc: 607.20 ng/ml

Instrument :
 ECD_O
 ClientSampleId :
 AR1660CCC500



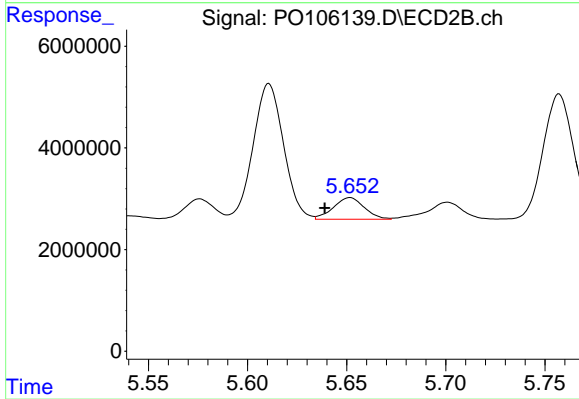
#19 AR-1242-4

R.T.: 5.118 min
 Delta R.T.: 0.003 min
 Response: 11044392
 Conc: 215.42 ng/ml



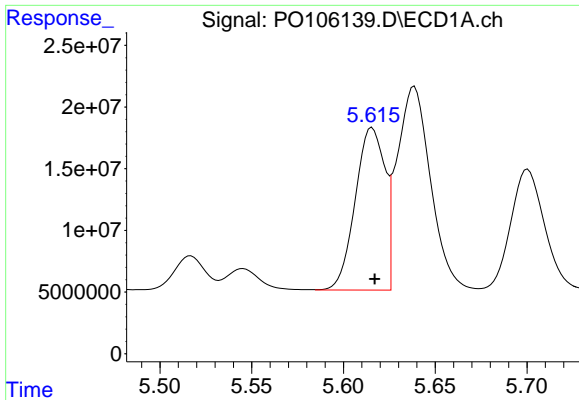
#20 AR-1242-5

R.T.: 6.533 min
 Delta R.T.: -0.002 min
 Response: 14110977
 Conc: 82.83 ng/ml



#20 AR-1242-5

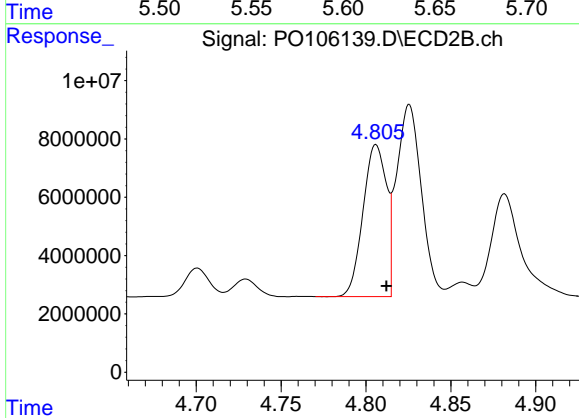
R.T.: 5.652 min
 Delta R.T.: 0.013 min
 Response: 4635193
 Conc: 71.72 ng/ml



#21 AR-1248-1

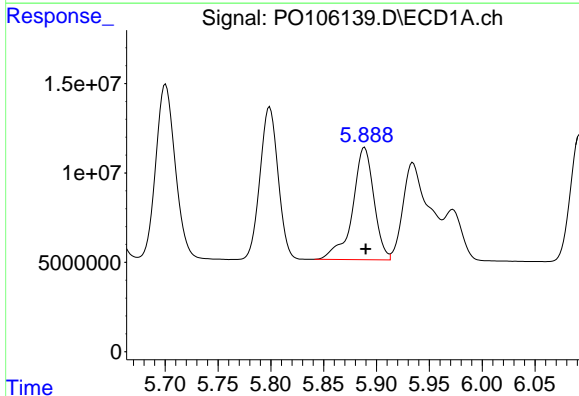
R.T.: 5.616 min
 Delta R.T.: -0.001 min
 Response: 147570519
 Conc: 784.97 ng/ml

Instrument :
 ECD_O
 ClientSampleId :
 AR1660CCC500



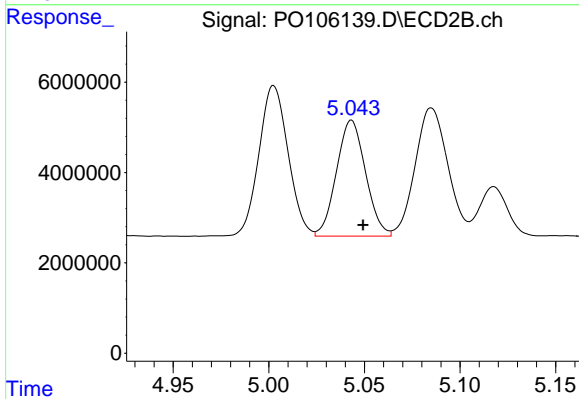
#21 AR-1248-1

R.T.: 4.806 min
 Delta R.T.: -0.006 min
 Response: 49955642
 Conc: 891.92 ng/ml



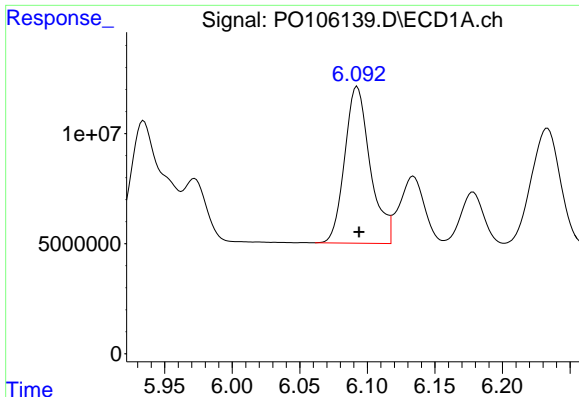
#22 AR-1248-2

R.T.: 5.889 min
 Delta R.T.: -0.001 min
 Response: 88367293
 Conc: 341.99 ng/ml



#22 AR-1248-2

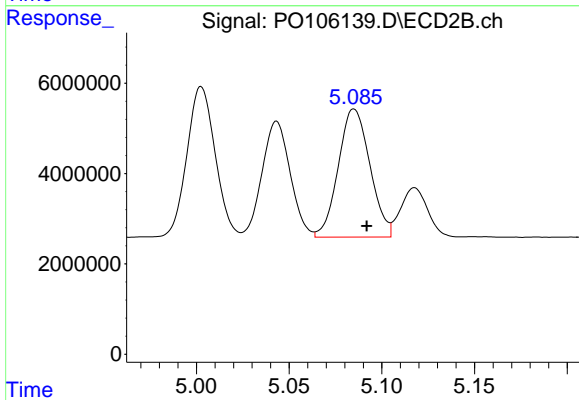
R.T.: 5.043 min
 Delta R.T.: -0.006 min
 Response: 27200095
 Conc: 365.39 ng/ml



#23 AR-1248-3

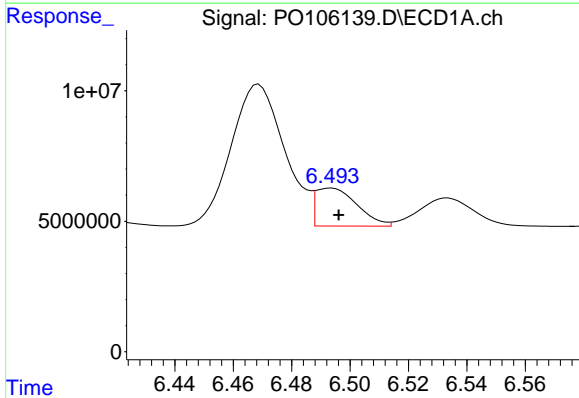
R.T.: 6.092 min
 Delta R.T.: -0.001 min
 Response: 93411222
 Conc: 327.05 ng/ml

Instrument :
 ECD_O
 ClientSampleId :
 AR1660CCC500



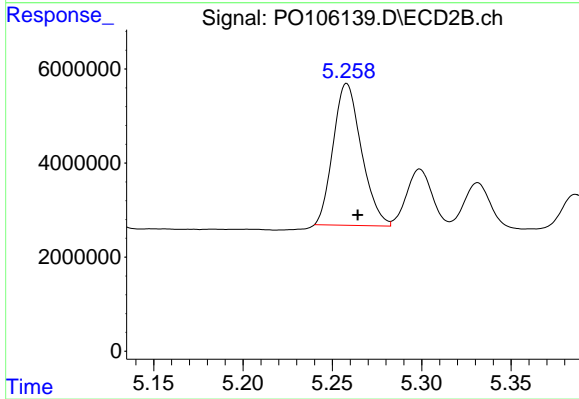
#23 AR-1248-3

R.T.: 5.085 min
 Delta R.T.: -0.007 min
 Response: 33688584
 Conc: 428.92 ng/ml



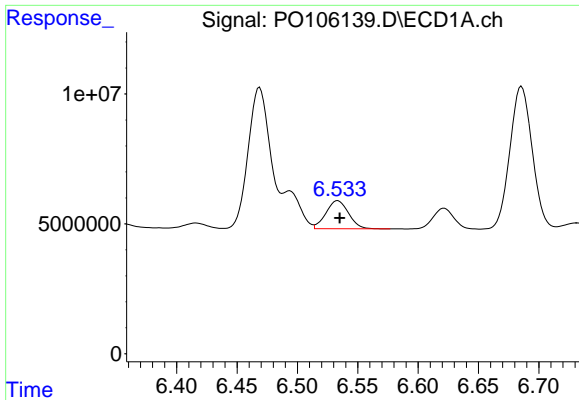
#24 AR-1248-4

R.T.: 6.494 min
 Delta R.T.: -0.003 min
 Response: 14319705
 Conc: 45.42 ng/ml



#24 AR-1248-4

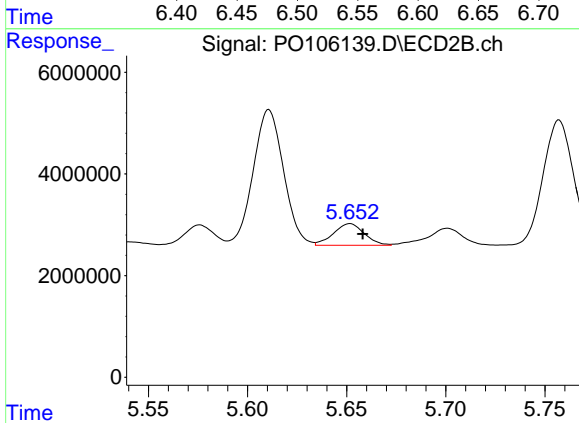
R.T.: 5.258 min
 Delta R.T.: -0.006 min
 Response: 33220892
 Conc: 356.78 ng/ml



#25 AR-1248-5

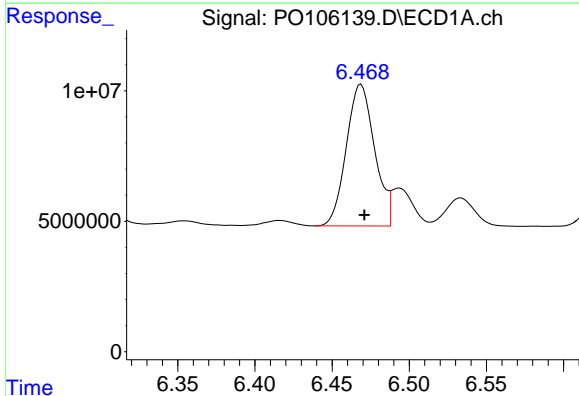
R.T.: 6.533 min
 Delta R.T.: -0.001 min
 Response: 14110977
 Conc: 46.49 ng/ml

Instrument :
 ECD_O
 ClientSampleId :
 AR1660CCC500



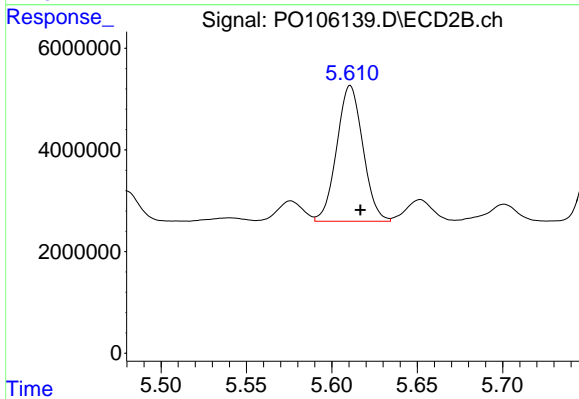
#25 AR-1248-5

R.T.: 5.652 min
 Delta R.T.: -0.006 min
 Response: 4635193
 Conc: 50.58 ng/ml



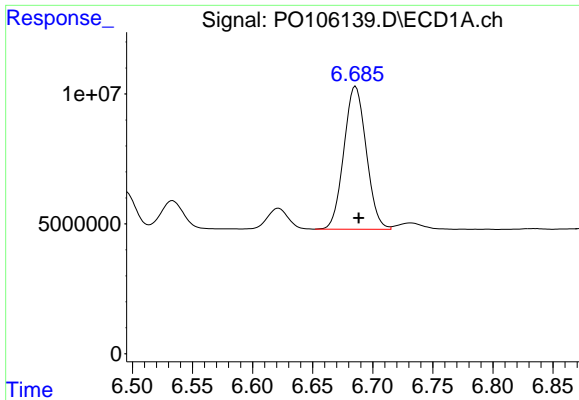
#26 AR-1254-1

R.T.: 6.469 min
 Delta R.T.: -0.002 min
 Response: 69305784
 Conc: 224.50 ng/ml



#26 AR-1254-1

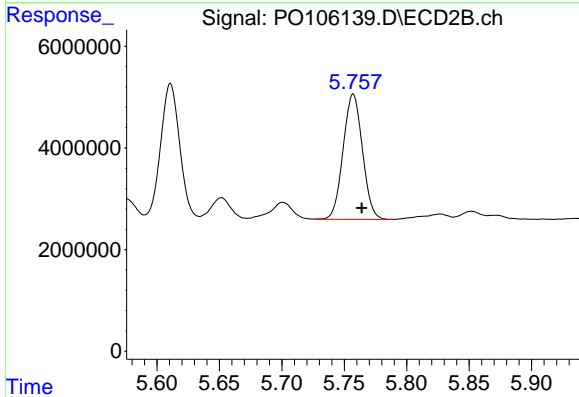
R.T.: 5.611 min
 Delta R.T.: -0.006 min
 Response: 28490629
 Conc: 211.16 ng/ml



#27 AR-1254-2

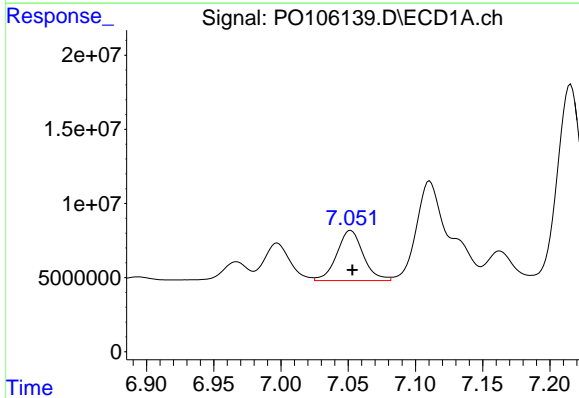
R.T.: 6.686 min
 Delta R.T.: -0.003 min
 Response: 71054750
 Conc: 154.22 ng/ml

Instrument :
 ECD_O
 ClientSampleId :
 AR1660CCC500



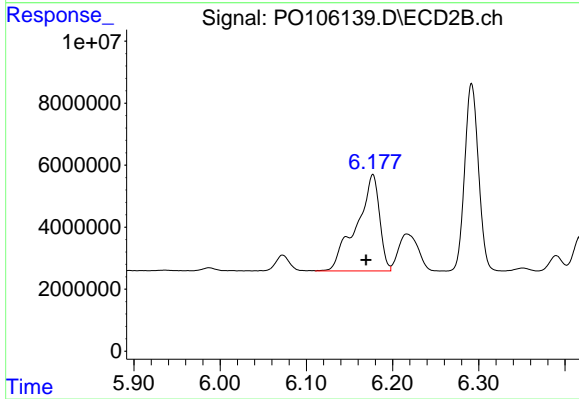
#27 AR-1254-2

R.T.: 5.757 min
 Delta R.T.: -0.007 min
 Response: 26583815
 Conc: 219.03 ng/ml



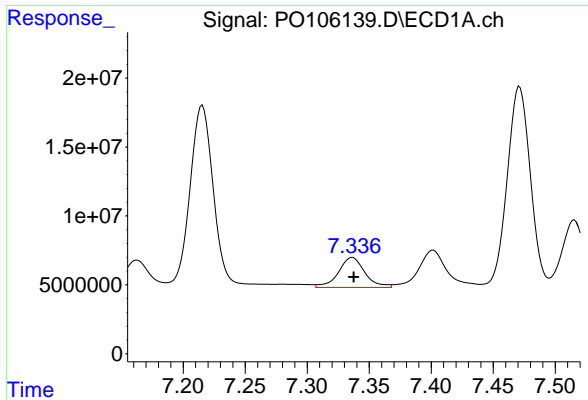
#28 AR-1254-3

R.T.: 7.052 min
 Delta R.T.: -0.001 min
 Response: 46191982
 Conc: 97.78 ng/ml



#28 AR-1254-3

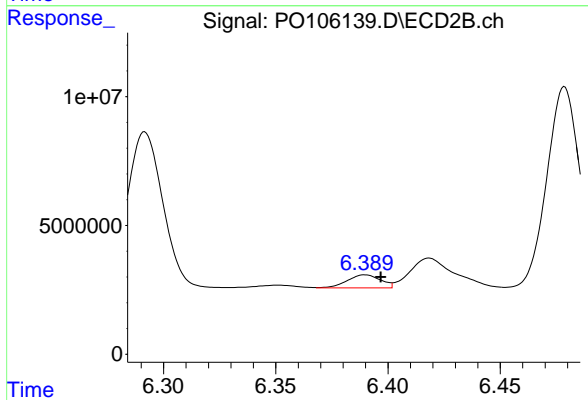
R.T.: 6.177 min
 Delta R.T.: 0.008 min
 Response: 57639925
 Conc: 299.03 ng/ml



#29 AR-1254-4

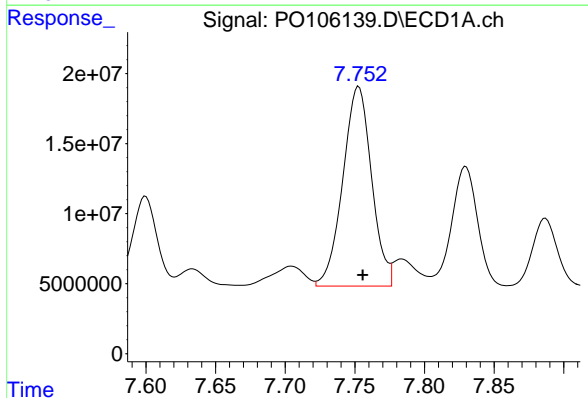
R.T.: 7.336 min
 Delta R.T.: -0.001 min
 Response: 32468329
 Conc: 93.21 ng/ml

Instrument :
 ECD_O
 ClientSampleId :
 AR1660CCC500



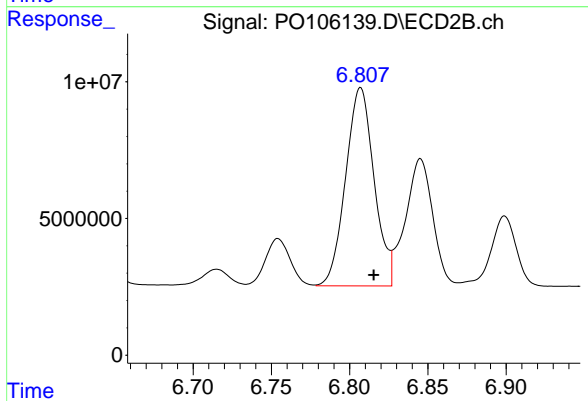
#29 AR-1254-4

R.T.: 6.390 min
 Delta R.T.: -0.007 min
 Response: 5221958
 Conc: 43.06 ng/ml



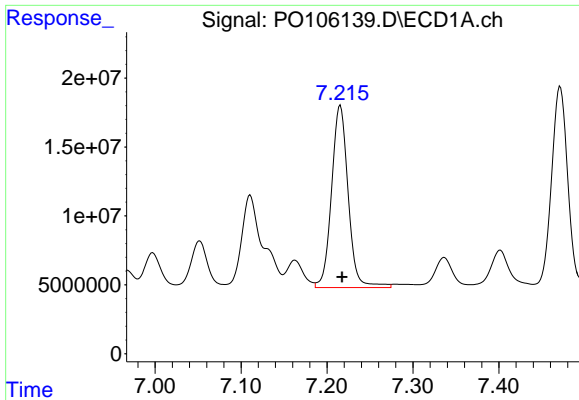
#30 AR-1254-5

R.T.: 7.753 min
 Delta R.T.: -0.003 min
 Response: 205103543
 Conc: 561.69 ng/ml



#30 AR-1254-5

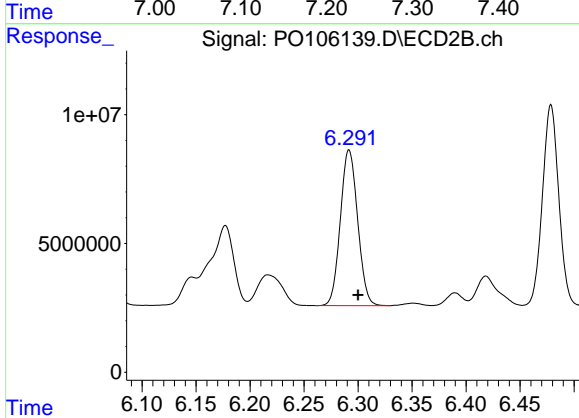
R.T.: 6.807 min
 Delta R.T.: -0.008 min
 Response: 91883948
 Conc: 519.68 ng/ml



#31 AR-1260-1

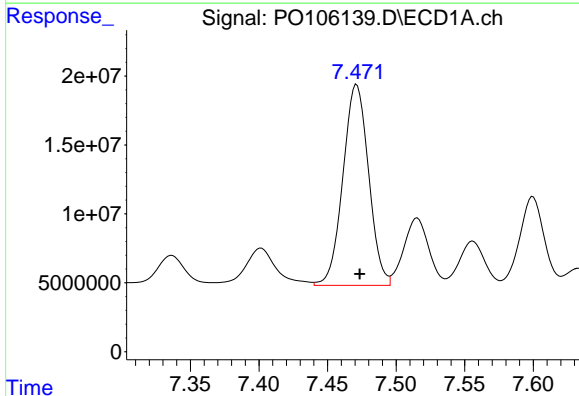
R.T.: 7.215 min
 Delta R.T.: -0.002 min
 Response: 177214380
 Conc: 493.83 ng/ml

Instrument :
 ECD_O
 ClientSampleId :
 AR1660CCC500



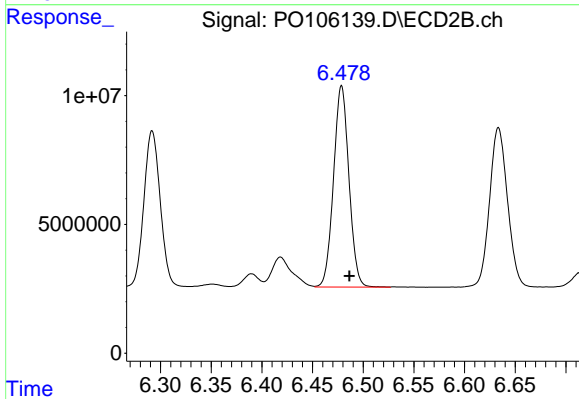
#31 AR-1260-1

R.T.: 6.292 min
 Delta R.T.: -0.008 min
 Response: 67387377
 Conc: 511.51 ng/ml



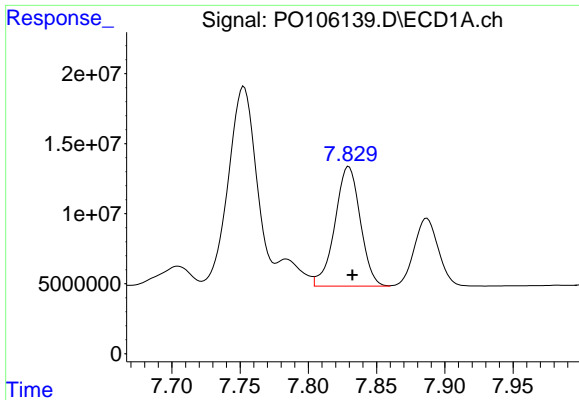
#32 AR-1260-2

R.T.: 7.471 min
 Delta R.T.: -0.002 min
 Response: 189808617
 Conc: 451.85 ng/ml



#32 AR-1260-2

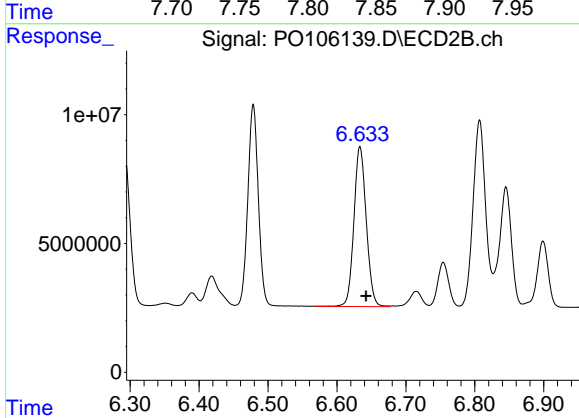
R.T.: 6.479 min
 Delta R.T.: -0.008 min
 Response: 82737278
 Conc: 504.16 ng/ml



#33 AR-1260-3

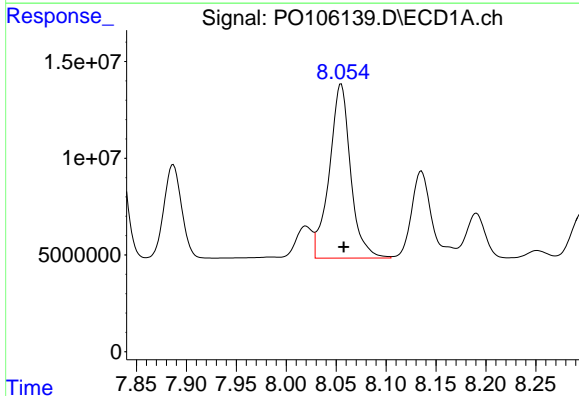
R.T.: 7.830 min
 Delta R.T.: -0.003 min
 Response: 110528711
 Conc: 413.27 ng/ml

Instrument :
 ECD_O
 ClientSampleId :
 AR1660CCC500



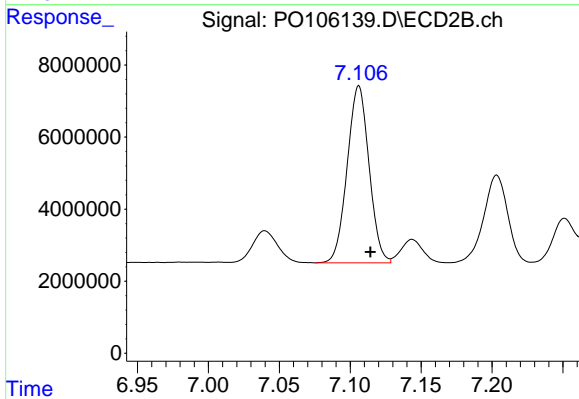
#33 AR-1260-3

R.T.: 6.633 min
 Delta R.T.: -0.009 min
 Response: 77283760
 Conc: 457.93 ng/ml



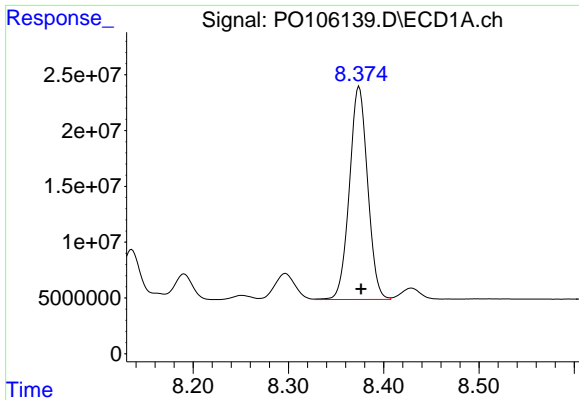
#34 AR-1260-4

R.T.: 8.055 min
 Delta R.T.: -0.002 min
 Response: 133401691
 Conc: 430.31 ng/ml



#34 AR-1260-4

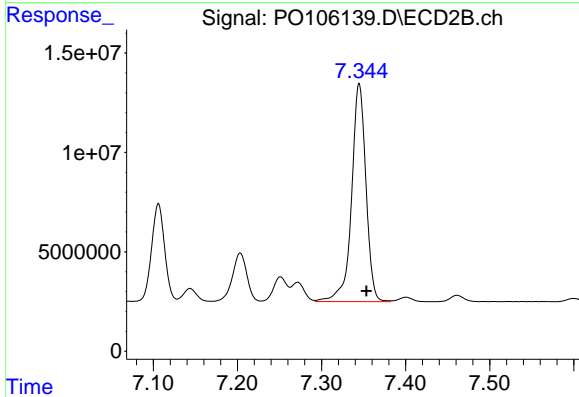
R.T.: 7.106 min
 Delta R.T.: -0.008 min
 Response: 52724151
 Conc: 475.76 ng/ml



#35 AR-1260-5

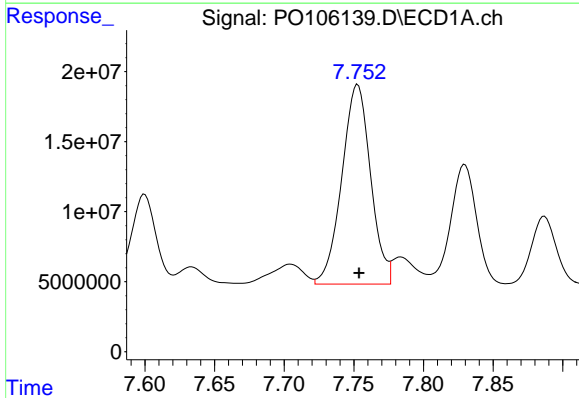
R.T.: 8.374 min
 Delta R.T.: -0.002 min
 Response: 252862886
 Conc: 454.52 ng/ml

Instrument :
 ECD_O
 ClientSampleId :
 AR1660CCC500



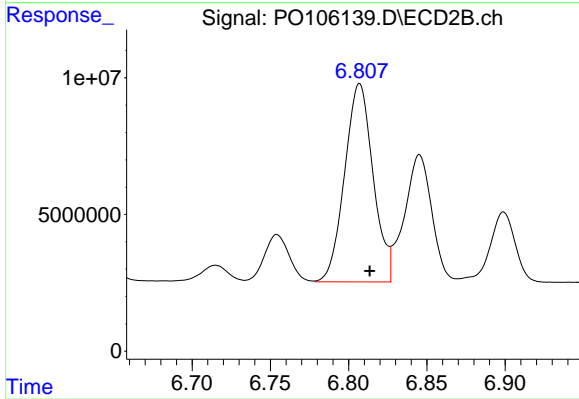
#35 AR-1260-5

R.T.: 7.345 min
 Delta R.T.: -0.008 min
 Response: 130304616
 Conc: 480.22 ng/ml



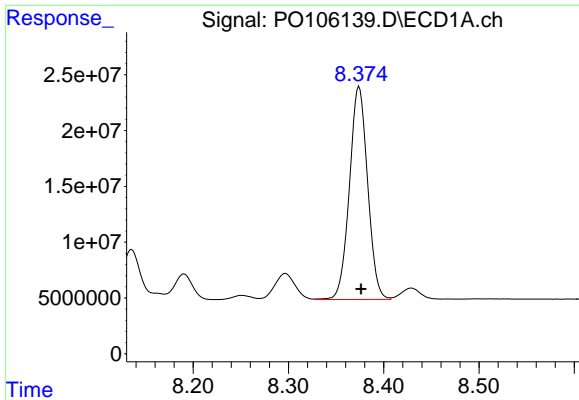
#36 AR-1262-1

R.T.: 7.753 min
 Delta R.T.: 0.000 min
 Response: 205103543
 Conc: 706.20 ng/ml



#36 AR-1262-1

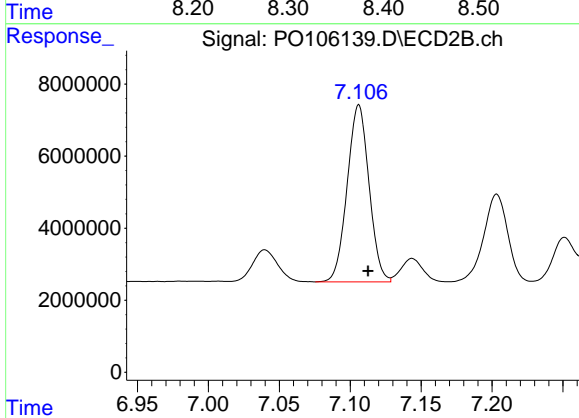
R.T.: 6.807 min
 Delta R.T.: -0.006 min
 Response: 91883948
 Conc: 953.14 ng/ml



#37 AR-1262-2

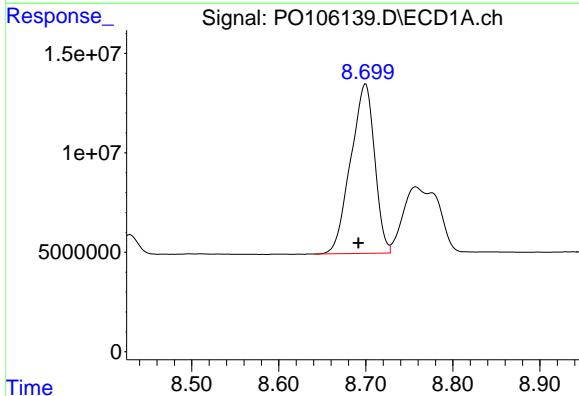
R.T.: 8.374 min
 Delta R.T.: -0.002 min
 Response: 252862886
 Conc: 351.66 ng/ml

Instrument :
 ECD_O
 ClientSampleId :
 AR1660CCC500



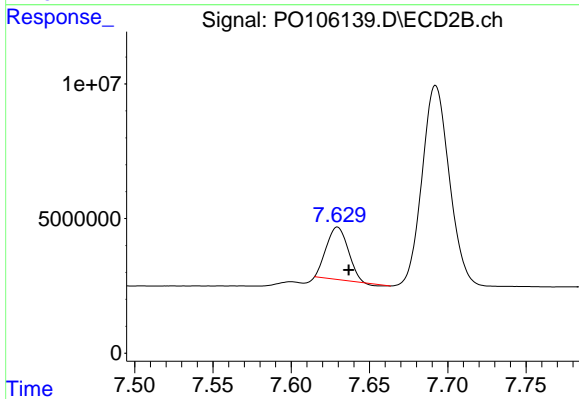
#37 AR-1262-2

R.T.: 7.106 min
 Delta R.T.: -0.006 min
 Response: 52724151
 Conc: 339.41 ng/ml



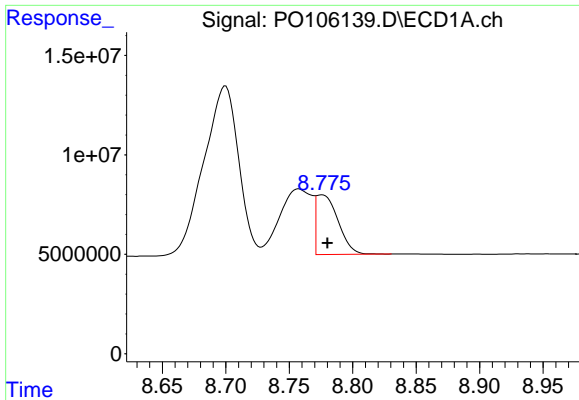
#38 AR-1262-3

R.T.: 8.700 min
 Delta R.T.: 0.008 min
 Response: 162683806
 Conc: 337.58 ng/ml



#38 AR-1262-3

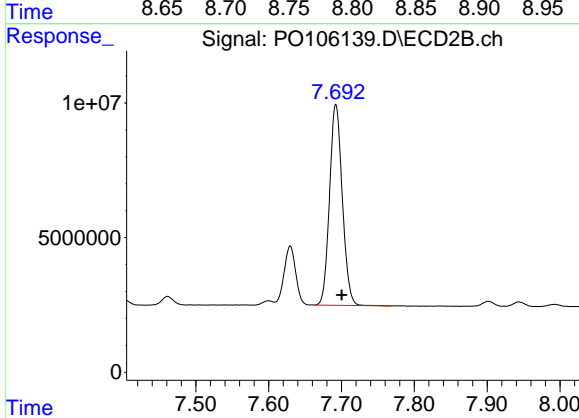
R.T.: 7.630 min
 Delta R.T.: -0.007 min
 Response: 18528056
 Conc: 162.84 ng/ml



#39 AR-1262-4

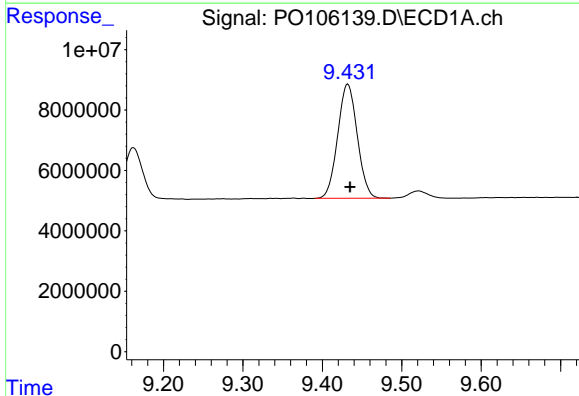
R.T.: 8.776 min
 Delta R.T.: -0.004 min
 Response: 36154378
 Conc: 100.80 ng/ml

Instrument :
 ECD_O
 ClientSampleId :
 AR1660CCC500



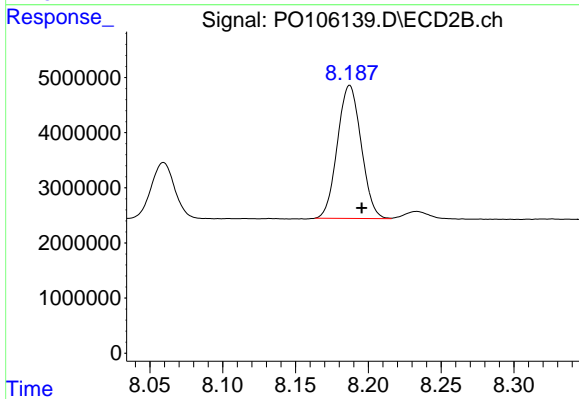
#39 AR-1262-4

R.T.: 7.692 min
 Delta R.T.: -0.008 min
 Response: 90792395
 Conc: 381.02 ng/ml



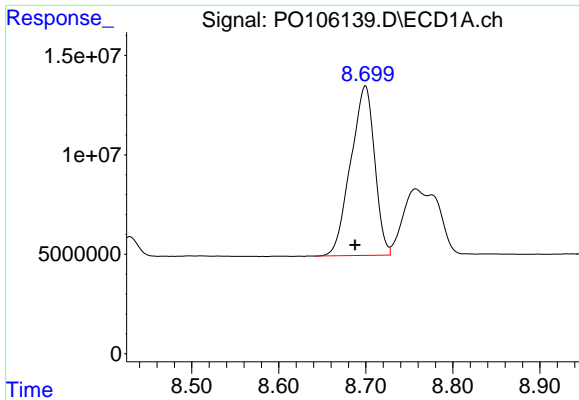
#40 AR-1262-5

R.T.: 9.432 min
 Delta R.T.: -0.003 min
 Response: 64622679
 Conc: 251.32 ng/ml



#40 AR-1262-5

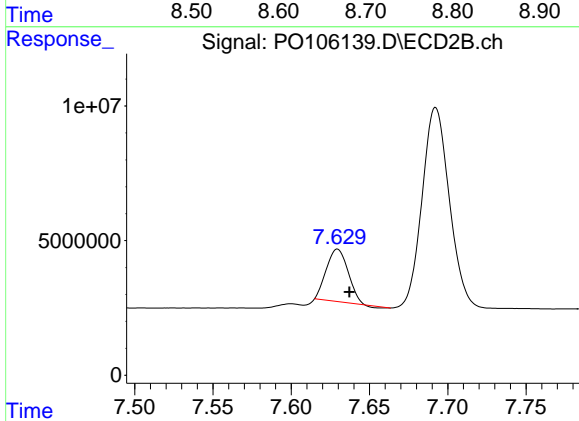
R.T.: 8.187 min
 Delta R.T.: -0.008 min
 Response: 27404416
 Conc: 249.98 ng/ml



#41 AR-1268-1

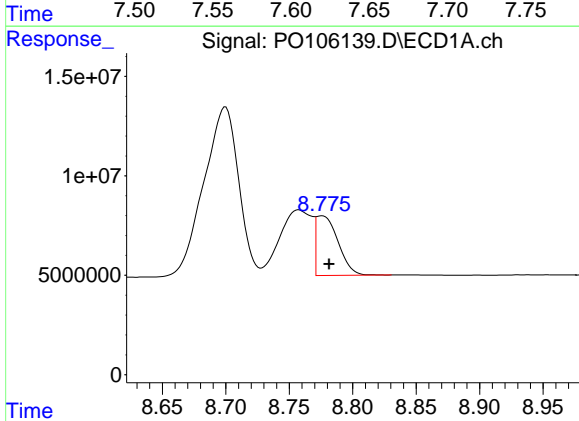
R.T.: 8.700 min
 Delta R.T.: 0.012 min
 Response: 162683806
 Conc: 198.83 ng/ml

Instrument :
 ECD_O
 ClientSampleId :
 AR1660CCC500



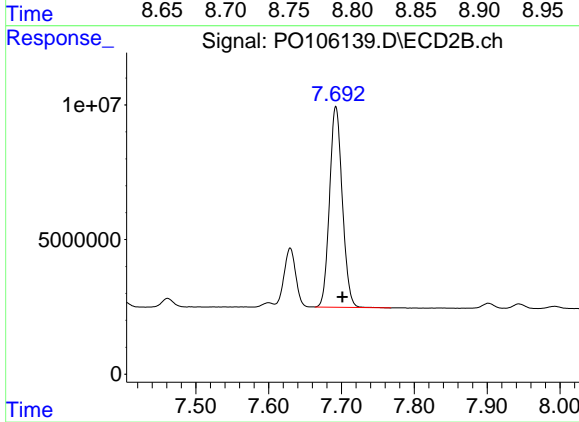
#41 AR-1268-1

R.T.: 7.630 min
 Delta R.T.: -0.008 min
 Response: 18528056
 Conc: 53.95 ng/ml



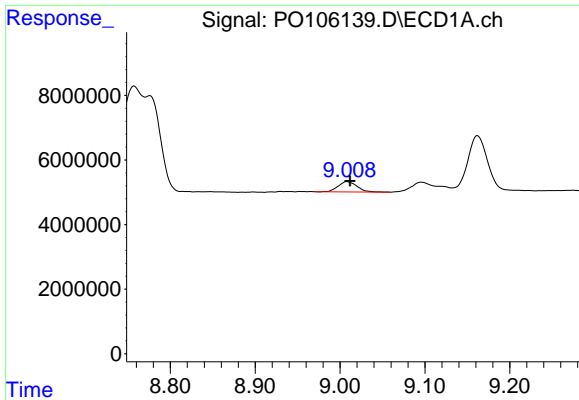
#42 AR-1268-2

R.T.: 8.776 min
 Delta R.T.: -0.006 min
 Response: 36154378
 Conc: 49.35 ng/ml



#42 AR-1268-2

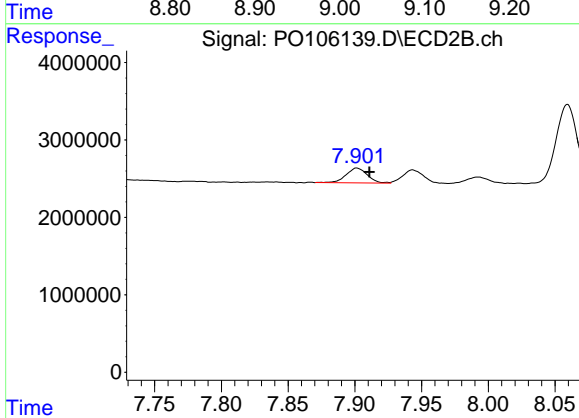
R.T.: 7.692 min
 Delta R.T.: -0.009 min
 Response: 90792395
 Conc: 281.91 ng/ml



#43 AR-1268-3

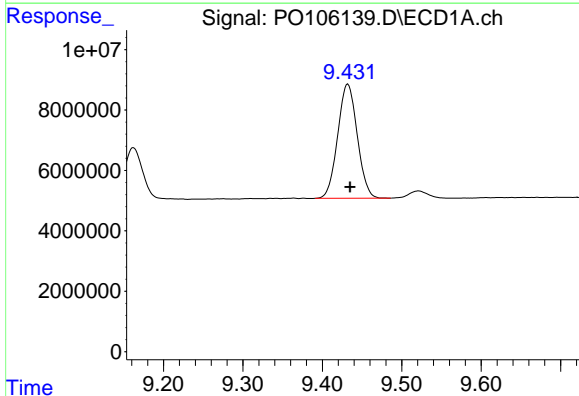
R.T.: 9.009 min
 Delta R.T.: -0.003 min
 Response: 4855599
 Conc: 7.89 ng/ml

Instrument :
 ECD_O
 ClientSampleId :
 AR1660CCC500



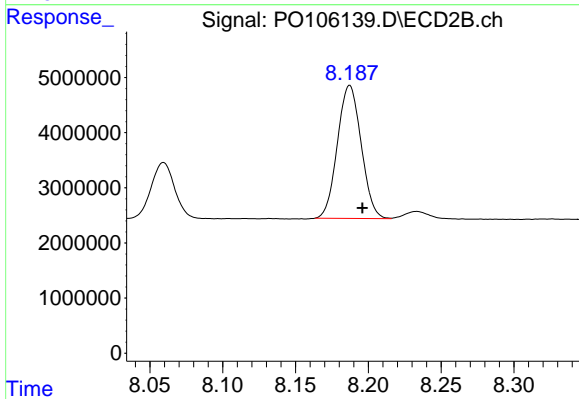
#43 AR-1268-3

R.T.: 7.902 min
 Delta R.T.: -0.009 min
 Response: 2102086
 Conc: 7.83 ng/ml



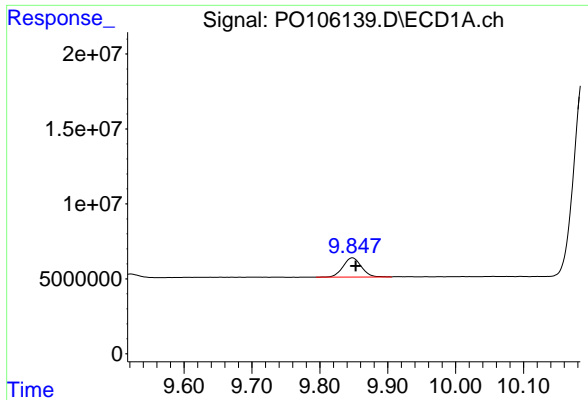
#44 AR-1268-4

R.T.: 9.432 min
 Delta R.T.: -0.003 min
 Response: 64622679
 Conc: 238.91 ng/ml



#44 AR-1268-4

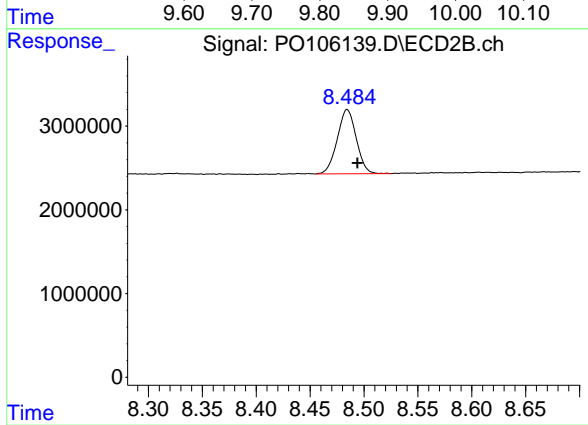
R.T.: 8.187 min
 Delta R.T.: -0.009 min
 Response: 27404416
 Conc: 241.95 ng/ml



#45 AR-1268-5

R.T.: 9.848 min
Delta R.T.: -0.005 min
Response: 24311204
Conc: 12.05 ng/ml

Instrument :
ECD_O
ClientSampleId :
AR1660CCC500



#45 AR-1268-5

R.T.: 8.484 min
Delta R.T.: -0.010 min
Response: 9438990
Conc: 11.03 ng/ml