

Data Path : Z:\pestpcbsrv\HPCHEM1\ECD_0\Data\P0090518\
 Data File : P0048740.D
 Signal(s) : Signal #1: ECD1A.CH Signal #2: ECD2B.CH
 Acq On : 05 Sep 2018 10:27
 Operator : SM/SJ
 Sample : J4756-01MS
 Misc :
 ALS Vial : 6 Sample Multiplier: 1

Instrument :
 ECD_0
 ClientSampled :
 WE-3MS

Manual Integrations
 APPROVED

Sohil
 9/6/2018 2:21:23 PM

Integration File signal 1: autoint1.e
 Integration File signal 2: autoint2.e
 Quant Time: Sep 05 12:24:31 2018
 Quant Method : Z:\pestpcbsrv\HPCHEM1\ECD_0\methods\P0090418.M
 Quant Title : GC EXTRACTABLES
 QLast Update : Wed Sep 05 03:48:40 2018
 Response via : Initial Calibration
 Integrator: ChemStation 6890 Scale Mode: Small noise peaks clipped

Volume Inj. : 2 µl
 Signal #1 Phase : ZB-MR1 Signal #2 Phase: ZB-MR2
 Signal #1 Info : 30Mx0.32mmx 0.50µ Signal #2 Info : 30M x 0.32mm x 0.25µm

Compound	RT#1	RT#2	Resp#1	Resp#2	ng/ml	ng/ml

System Monitoring Compounds						
1) SA Tetrachlo...	4.446	3.531	4001880	4342823	33.167	27.784
2) SA Decachlor...	10.179	8.468	2696767	2846995	19.328	19.256
Target Compounds						
3) L1 AR-1016-1	5.155	4.194	1224693	1353566	377.178	312.336
4) L1 AR-1016-2	5.349	4.600	1447657	2342589	420.925m	363.802m
5) L1 AR-1016-3	5.617	4.620	1953355	3247838	386.865m	384.645
6) L1 AR-1016-4	5.703	4.674	1541693	1814874	334.957m	308.936
7) L1 AR-1016-5	6.096	5.044	1922399	1711384	495.319m	331.034m#
31) L7 AR-1260-1	7.217	6.068	4295115	5970532	521.325	573.525
32) L7 AR-1260-2	7.473	6.253	6229939	5630831	633.990	449.653 #
33) L7 AR-1260-3	7.759	6.405	8071496	5102840	676.453	430.100 #
34) L7 AR-1260-4	8.056	6.874	4030506	2924533	469.593	309.113 #
35) L7 AR-1260-5	8.378	7.114	5878626	7777308	354.097	358.156

(f)=RT Delta > 1/2 Window (#)=Amounts differ by > 25% (m)=manual int.

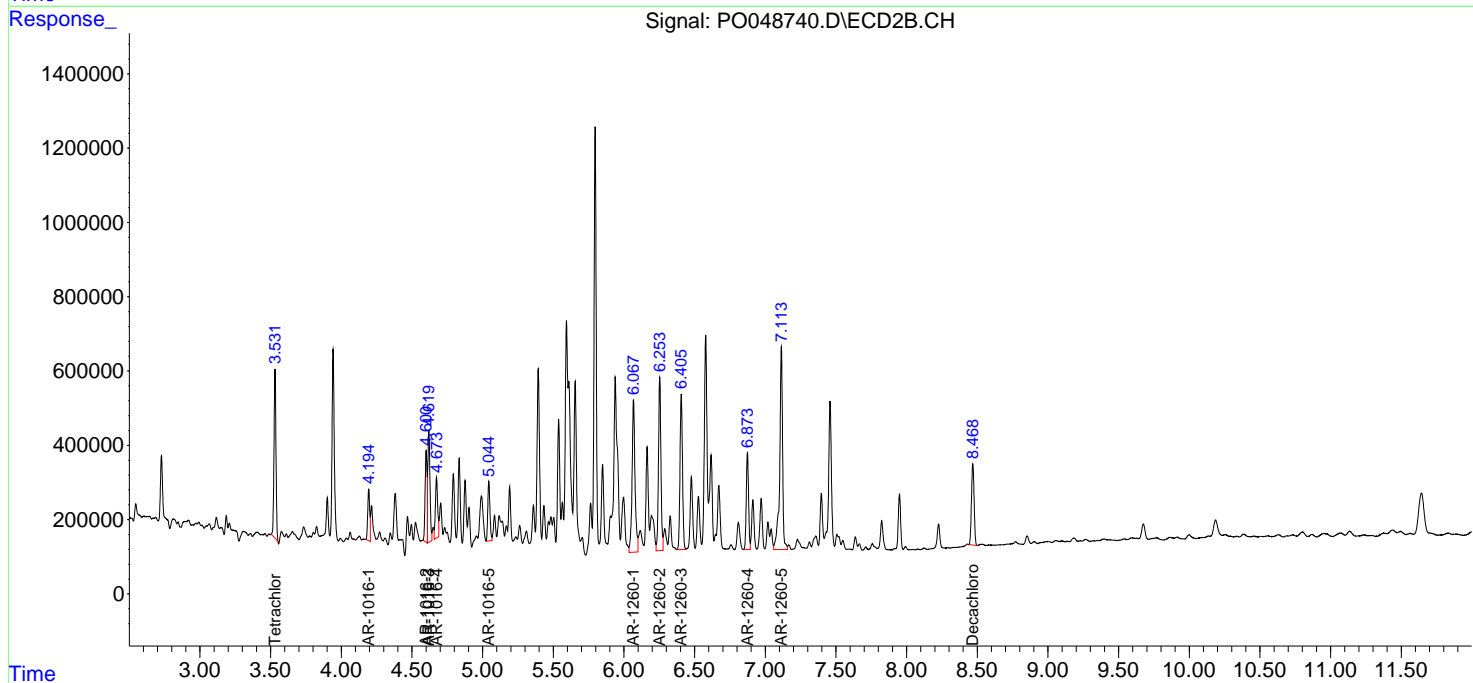
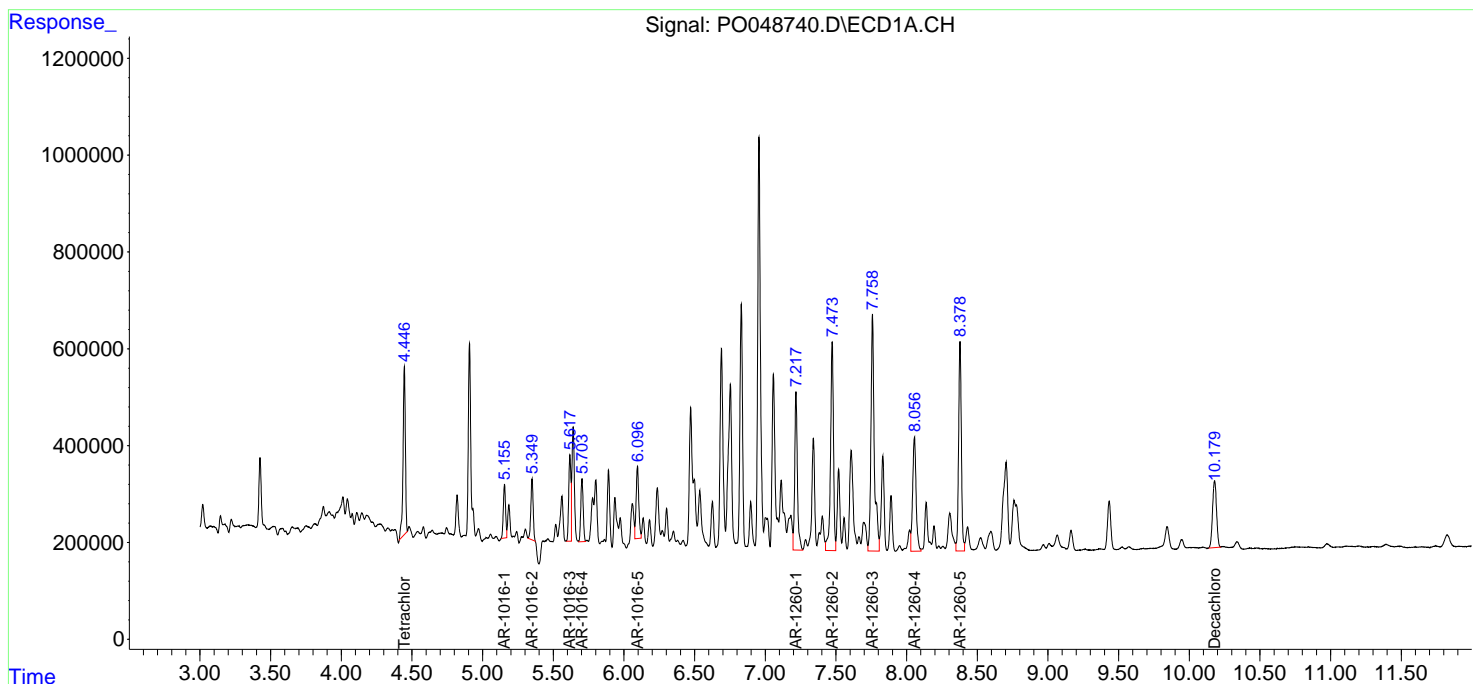
Data Path : Z:\pestpcbsrv\HPCHEM1\ECD_0\Data\PO090518\
 Data File : PO048740.D
 Signal(s) : Signal #1: ECD1A.CH Signal #2: ECD2B.CH
 Acq On : 05 Sep 2018 10:27
 Operator : SM/SJ
 Sample : J4756-01MS
 Misc :
 ALS Vial : 6 Sample Multiplier: 1

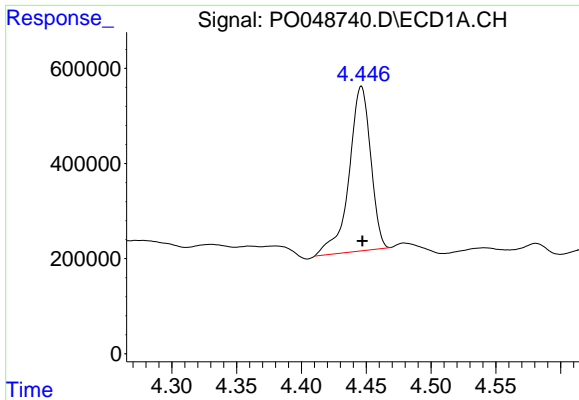
Instrument :
 ECD_O
 ClientSampled :
 WE-3MS

Manual Integrations
APPROVED
 Sohil
 9/6/2018 2:21:23 PM

Integration File signal 1: autoint1.e
 Integration File signal 2: autoint2.e
 Quant Time: Sep 05 12:24:31 2018
 Quant Method : Z:\pestpcbsrv\HPCHEM1\ECD_0\methods\PO090418.M
 Quant Title : GC EXTRACTABLES
 QLast Update : Wed Sep 05 03:48:40 2018
 Response via : Initial Calibration
 Integrator: ChemStation 6890 Scale Mode: Small noise peaks clipped

Volume Inj. : 2 µl
 Signal #1 Phase : ZB-MR1 Signal #2 Phase: ZB-MR2
 Signal #1 Info : 30Mx0.32mmx 0.50µ Signal #2 Info : 30M x 0.32mm x 0.25µm





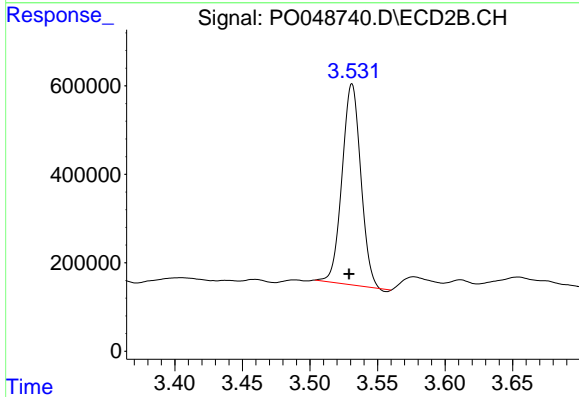
#1 Tetrachloro-m-xylene

R.T.: 4.446 min
 Delta R.T.: 0.000 min
 Response: 4001880
 Conc: 33.17 ng/ml

Instrument :
 ECD_O
 ClientSampled :
 WE-3MS

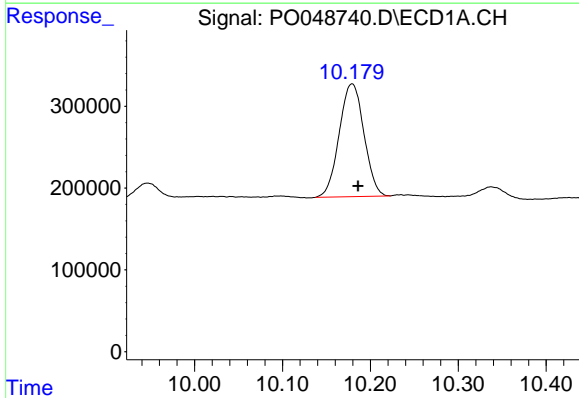
Manual Integrations
 APPROVED

Sohil
 9/6/2018 2:21:23 PM



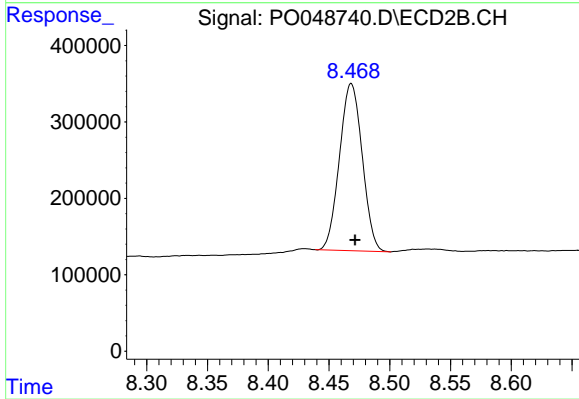
#1 Tetrachloro-m-xylene

R.T.: 3.531 min
 Delta R.T.: 0.002 min
 Response: 4342823
 Conc: 27.78 ng/ml



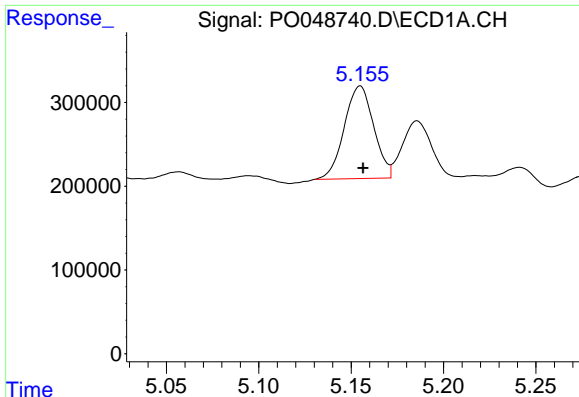
#2 Decachlorobiphenyl

R.T.: 10.179 min
 Delta R.T.: -0.007 min
 Response: 2696767
 Conc: 19.33 ng/ml



#2 Decachlorobiphenyl

R.T.: 8.468 min
 Delta R.T.: -0.003 min
 Response: 2846995
 Conc: 19.26 ng/ml



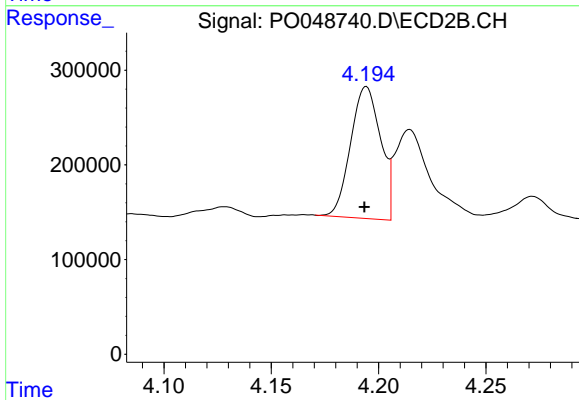
#3 AR-1016-1

R.T.: 5.155 min
 Delta R.T.: -0.002 min
 Response: 1224693
 Conc: 377.18 ng/ml

Instrument :
 ECD_O
 ClientSampled :
 WE-3MS

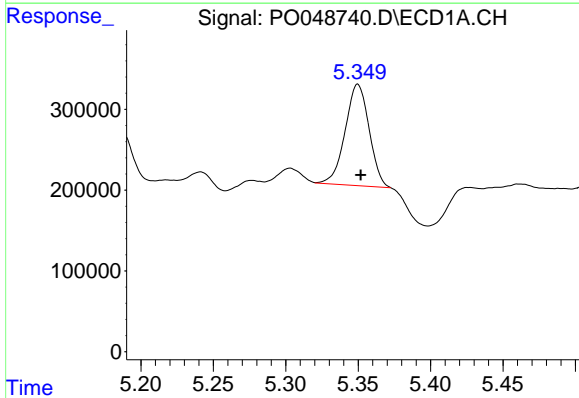
Manual Integrations
 APPROVED

Sohil
 9/6/2018 2:21:23 PM



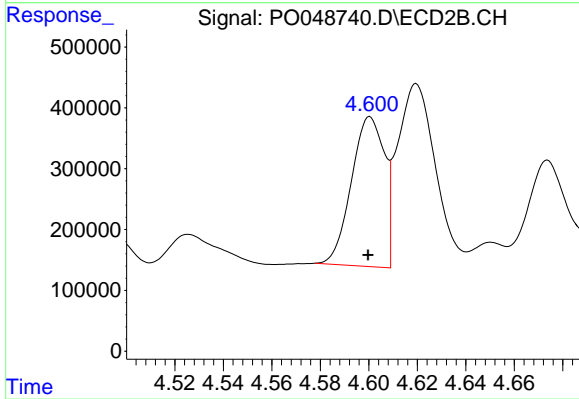
#3 AR-1016-1

R.T.: 4.194 min
 Delta R.T.: 0.000 min
 Response: 1353566
 Conc: 312.34 ng/ml



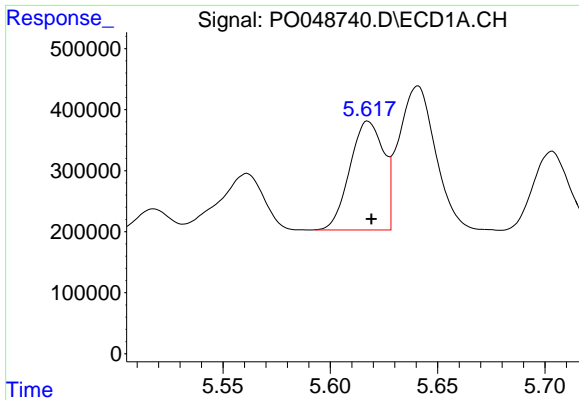
#4 AR-1016-2

R.T.: 5.349 min
 Delta R.T.: -0.002 min
 Response: 1447657
 Conc: 420.92 ng/ml m



#4 AR-1016-2

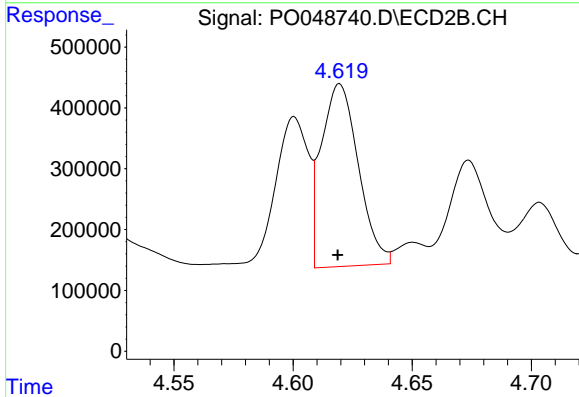
R.T.: 4.600 min
 Delta R.T.: 0.000 min
 Response: 2342589
 Conc: 363.80 ng/ml m



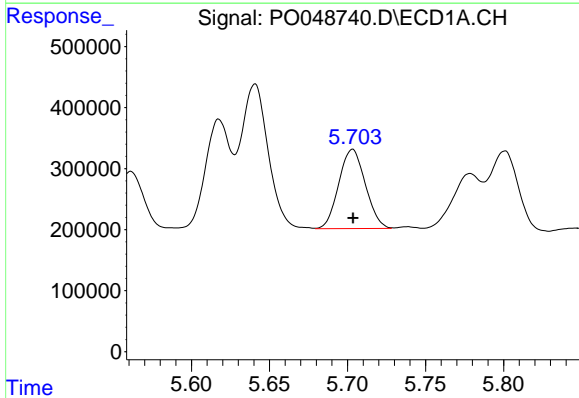
#5 AR-1016-3
 R.T.: 5.617 min
 Delta R.T.: -0.002 min
 Response: 1953355
 Conc: 386.87 ng/ml m

Instrument :
 ECD_O
 ClientSampled :
 WE-3MS

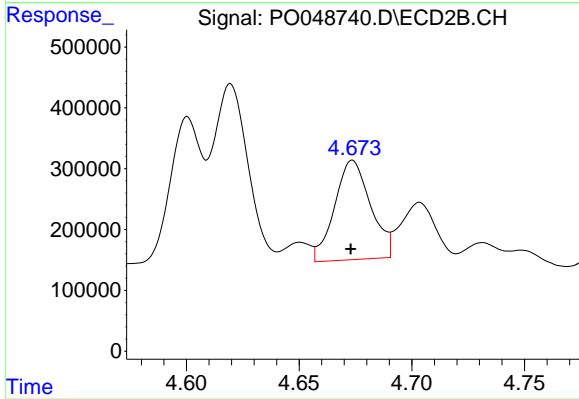
Manual Integrations
APPROVED
 Sohil
 9/6/2018 2:21:23 PM



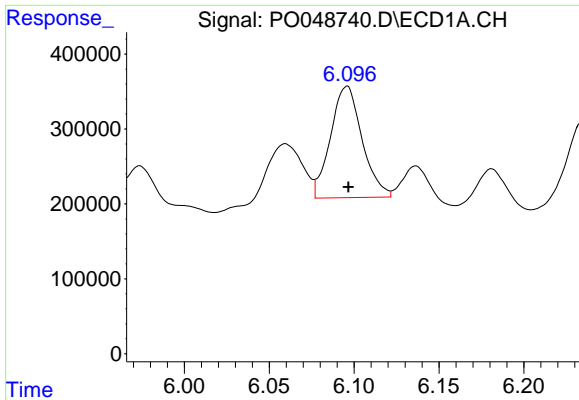
#5 AR-1016-3
 R.T.: 4.620 min
 Delta R.T.: 0.000 min
 Response: 3247838
 Conc: 384.64 ng/ml



#6 AR-1016-4
 R.T.: 5.703 min
 Delta R.T.: 0.000 min
 Response: 1541693
 Conc: 334.96 ng/ml m



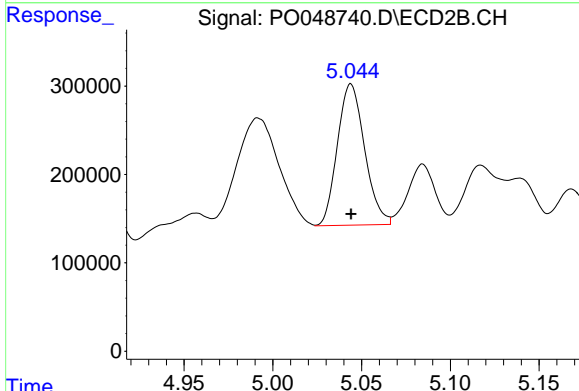
#6 AR-1016-4
 R.T.: 4.674 min
 Delta R.T.: 0.000 min
 Response: 1814874
 Conc: 308.94 ng/ml



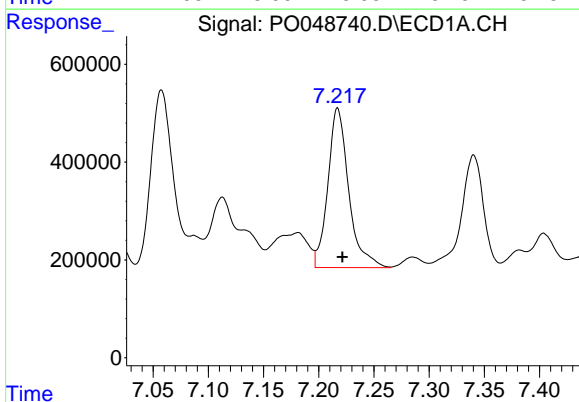
#7 AR-1016-5
 R.T.: 6.096 min
 Delta R.T.: 0.000 min
 Response: 1922399
 Conc: 495.32 ng/ml m

Instrument :
 ECD_O
ClientSampled :
 WE-3MS

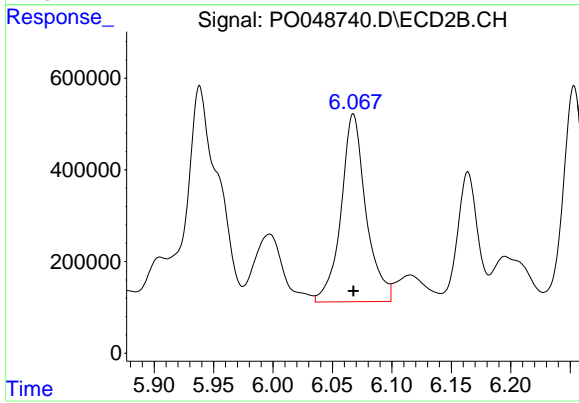
Manual Integrations
APPROVED
 Sohil
 9/6/2018 2:21:23 PM



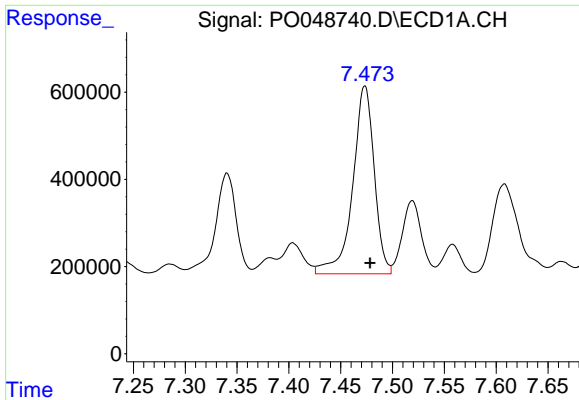
#7 AR-1016-5
 R.T.: 5.044 min
 Delta R.T.: 0.000 min
 Response: 1711384
 Conc: 331.03 ng/ml m



#31 AR-1260-1
 R.T.: 7.217 min
 Delta R.T.: -0.004 min
 Response: 4295115
 Conc: 521.32 ng/ml



#31 AR-1260-1
 R.T.: 6.068 min
 Delta R.T.: 0.000 min
 Response: 5970532
 Conc: 573.53 ng/ml

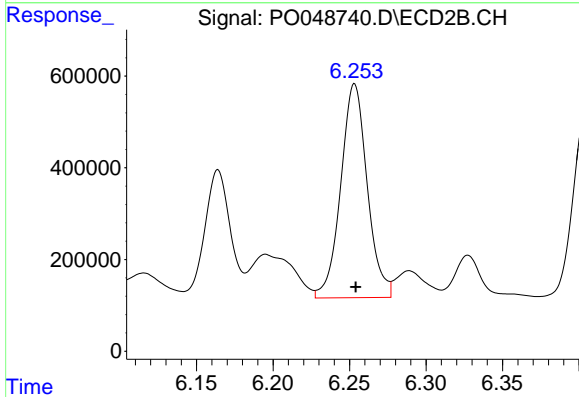


#32 AR-1260-2

R.T.: 7.473 min
 Delta R.T.: -0.005 min
 Response: 6229939
 Conc: 633.99 ng/ml

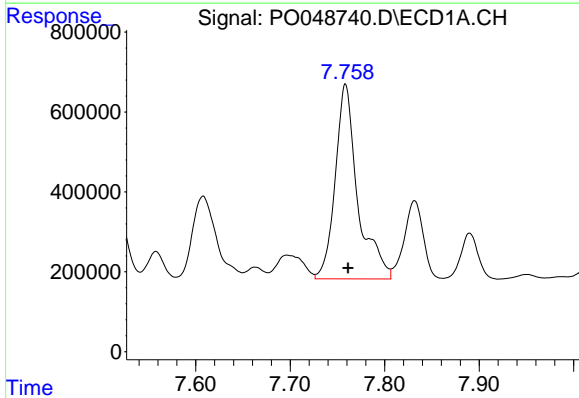
Instrument :
 ECD_O
 ClientSampled :
 WE-3MS

Manual Integrations
 APPROVED
 Sohil
 9/6/2018 2:21:23 PM



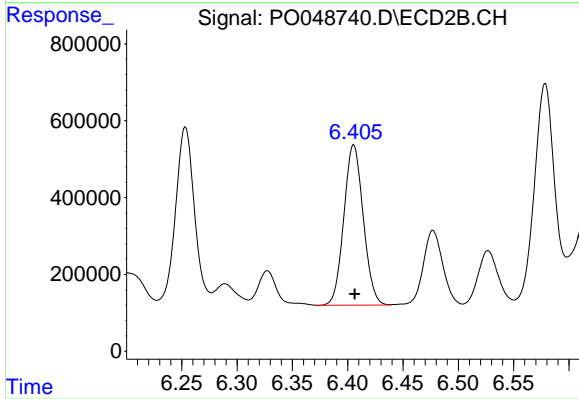
#32 AR-1260-2

R.T.: 6.253 min
 Delta R.T.: 0.000 min
 Response: 5630831
 Conc: 449.65 ng/ml



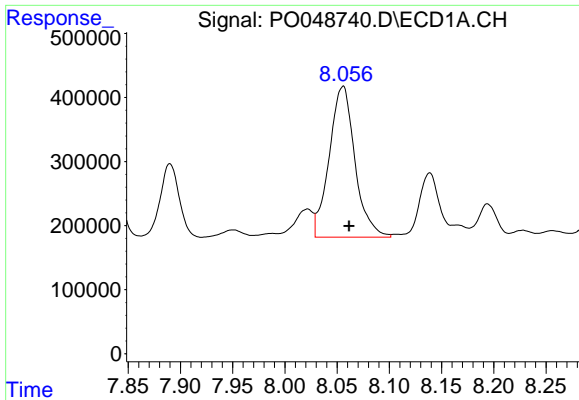
#33 AR-1260-3

R.T.: 7.759 min
 Delta R.T.: -0.003 min
 Response: 8071496
 Conc: 676.45 ng/ml



#33 AR-1260-3

R.T.: 6.405 min
 Delta R.T.: 0.000 min
 Response: 5102840
 Conc: 430.10 ng/ml

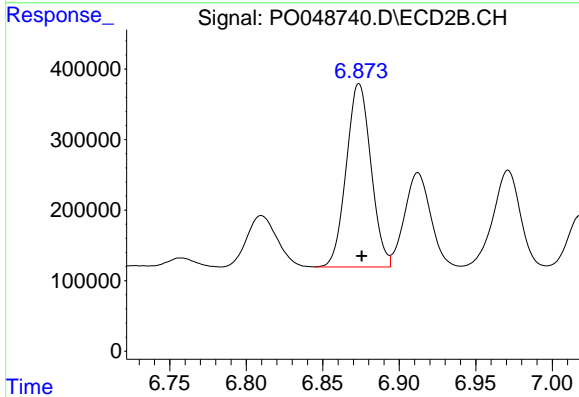


#34 AR-1260-4

R.T.: 8.056 min
 Delta R.T.: -0.006 min
 Response: 4030506
 Conc: 469.59 ng/ml

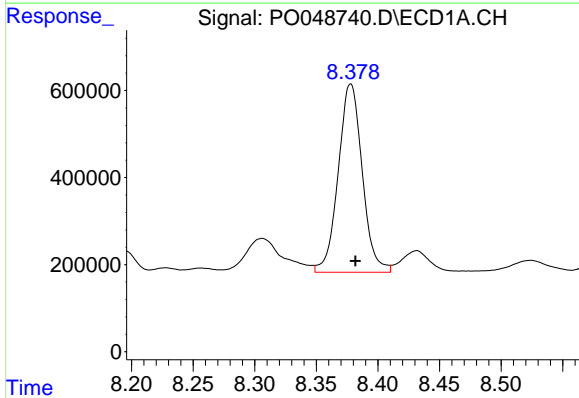
Instrument :
 ECD_O
ClientSampled :
 WE-3MS

Manual Integrations
APPROVED
 Sohil
 9/6/2018 2:21:23 PM



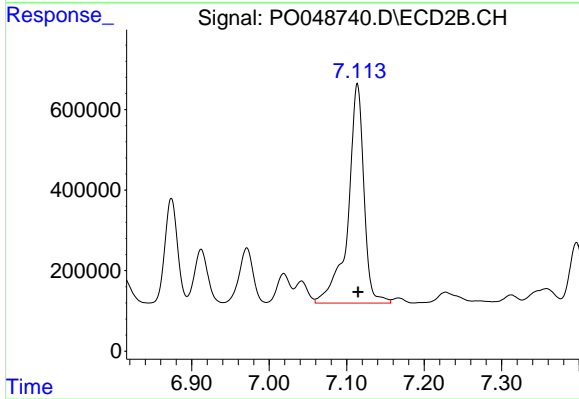
#34 AR-1260-4

R.T.: 6.874 min
 Delta R.T.: -0.002 min
 Response: 2924533
 Conc: 309.11 ng/ml



#35 AR-1260-5

R.T.: 8.378 min
 Delta R.T.: -0.004 min
 Response: 5878626
 Conc: 354.10 ng/ml



#35 AR-1260-5

R.T.: 7.114 min
 Delta R.T.: 0.000 min
 Response: 7777308
 Conc: 358.16 ng/ml