

Data Path : Z:\pestpcbsrv\HPCHEM1\ECD\_0\Data\P0090523\  
 Data File : P0097710.D  
 Signal(s) : Signal #1: ECD1A.ch Signal #2: ECD2B.ch  
 Acq On : 05 Sep 2023 14:06  
 Operator : YP/AJ  
 Sample : 04274-01  
 Misc :  
 ALS Vial : 16 Sample Multiplier: 1

Instrument :  
 ECD\_0  
 ClientSampleId :  
 RT2683

Integration File signal 1: autoint1.e  
 Integration File signal 2: autoint2.e  
 Quant Time: Sep 06 01:28:15 2023  
 Quant Method : Z:\pestpcbsrv\HPCHEM1\ECD\_0\methods\P0082823.M  
 Quant Title : GC EXTRACTABLES  
 QLast Update : Tue Aug 29 10:29:21 2023  
 Response via : Initial Calibration  
 Integrator: ChemStation

Volume Inj. : 2 µl  
 Signal #1 Phase : ZB-MR2 Signal #2 Phase: ZB-MR2  
 Signal #1 Info : 30Mx0.32mmx 0.50µ Signal #2 Info : 30M x 0.32mm x 0.25µm

Compound	RT#1	RT#2	Resp#1	Resp#2	ng/ml	ng/ml
System Monitoring Compounds						
1) SA Tetrachlo...	4.445	3.626	43984048	9271376	13.178	13.743
2) SA Decachlor...	10.299	8.666	21632603	7535688	11.787	13.127
Target Compounds						
3) L1 AR-1016-1	5.650	4.738	10009350	1427610	111.205	65.581 #
4) L1 AR-1016-2	5.650	4.738	10009350	1427610	72.136	47.312 #
5) L1 AR-1016-3	5.718	4.915	2266248	1228694	24.995	76.064 #
6) L1 AR-1016-4	5.785	4.955	19240050	3440932	277.495	239.799
7) L1 AR-1016-5	6.104	5.170	8395408	5945858	118.196	325.120 #
8) L2 AR-1221-1	4.655	3.851	2646188	294075	65.750	35.923 #
9) L2 AR-1221-2	4.754	3.919	1498095	388179	49.838	66.977 #
10) L2 AR-1221-3	4.784f	4.044f	2032730	263883	22.819	14.351 #
11) L3 AR-1232-1	4.856f	4.044f	4034226	263883	54.697	17.515 #
12) L3 AR-1232-2	5.352	4.738	4115217	1427610	107.387	102.263
13) L3 AR-1232-3	5.650	4.915	10009350	1228694	154.761	174.940
14) L3 AR-1232-4	5.785	4.996	19240050	3191143	604.008	451.328 #
15) L3 AR-1232-5	5.900	5.170	17471897	5945858	593.792	755.399 #
16) L4 AR-1242-1	5.650	4.738	10009350	1427610	123.586	74.007 #
17) L4 AR-1242-2	5.650	4.738	10009350	1427610	80.147	52.448 #
18) L4 AR-1242-3	5.718	4.915	2266248	1228694	27.563	85.619 #
19) L4 AR-1242-4	5.785	4.996	19240050	3191143	306.494	201.481 #
20) L4 AR-1242-5	6.549	5.529	17160293	12426021	272.837	704.095 #
21) L5 AR-1248-1	5.650	4.738	10009350	1427610	169.712	103.889 #
22) L5 AR-1248-2	5.900	4.955	17471897	3440932	176.654	155.179
23) L5 AR-1248-3	6.104	4.996	8395408	3191143	81.032	138.790 #
24) L5 AR-1248-4	6.523	5.170	49056093	5945858	536.256	219.106 #
25) L5 AR-1248-5	6.549	5.565	17160293	5421763	169.037	239.819 #
26) L6 AR-1254-1	6.492	5.529	48881385	12426021	444.612	321.956 #
27) L6 AR-1254-2	6.714	5.672	54230084	4147851	332.781	121.778 #
28) L6 AR-1254-3	7.079	6.077	30034227	5056462	184.423	95.298 #
29) L6 AR-1254-4	7.366	6.307	10664143	3190415	109.410	117.000
30) L6 AR-1254-5	7.789	6.727	7785111	2061408	68.942	46.756 #
31) L7 AR-1260-1	7.243	6.228	4517115	5633832	35.388	150.842 #
32) L7 AR-1260-2	7.500	6.396	33202848	1932406	243.661	45.668 #
33) L7 AR-1260-3	7.866	6.551	1768518	1561053	16.732	37.294 #
34) L7 AR-1260-4	8.076	7.027	4820242	1147952	42.610	35.493
35) L7 AR-1260-5	8.423	7.269	4222629	2480992	22.463	37.575 #
36) L8 AR-1262-1	7.866	6.827	1768518	755553	11.752	37.648 #
37) L8 AR-1262-2	8.423	7.027	4222629	1147952	19.283	26.274 #
38) L8 AR-1262-3	8.760	7.554	4364881	578305	28.154	18.556 #
39) L8 AR-1262-4	8.839	7.617	3014766	1706754	24.184	30.343 #
40) L8 AR-1262-5	9.515	8.115	1708395	467576	24.842	19.875
41) L9 AR-1268-1	8.760	7.554	4364881	578305	15.369	6.042 #

Data Path : Z:\pestpcbsrv\HPCHEM1\ECD\_0\Data\P0090523\  
 Data File : P0097710.D  
 Signal(s) : Signal #1: ECD1A.ch Signal #2: ECD2B.ch  
 Acq On : 05 Sep 2023 14:06  
 Operator : YP/AJ  
 Sample : 04274-01  
 Misc :  
 ALS Vial : 16 Sample Multiplier: 1

Instrument :  
 ECD\_0  
 ClientSampleId :  
 RT2683

Integration File signal 1: autoint1.e  
 Integration File signal 2: autoint2.e  
 Quant Time: Sep 06 01:28:15 2023  
 Quant Method : Z:\pestpcbsrv\HPCHEM1\ECD\_0\methods\P0082823.M  
 Quant Title : GC EXTRACTABLES  
 QLast Update : Tue Aug 29 10:29:21 2023  
 Response via : Initial Calibration  
 Integrator: ChemStation

Volume Inj. : 2 µl  
 Signal #1 Phase : ZB-MR1 Signal #2 Phase: ZB-MR2  
 Signal #1 Info : 30Mx0.32mmx 0.50µ Signal #2 Info : 30M x 0.32mm x 0.25µm

	Compound	RT#1	RT#2	Resp#1	Resp#2	ng/ml	ng/ml
42)	L9 AR-1268-2	8.839	7.617	3014766	1706754	11.866	20.589 #
43)	L9 AR-1268-3	9.079	7.934	477690	35542	2.118	1.794
44)	L9 AR-1268-4	9.515	8.115	1708395	467576	22.196	18.093
45)	L9 AR-1268-5	9.944	8.409	1504494	289327	2.179	1.269 #

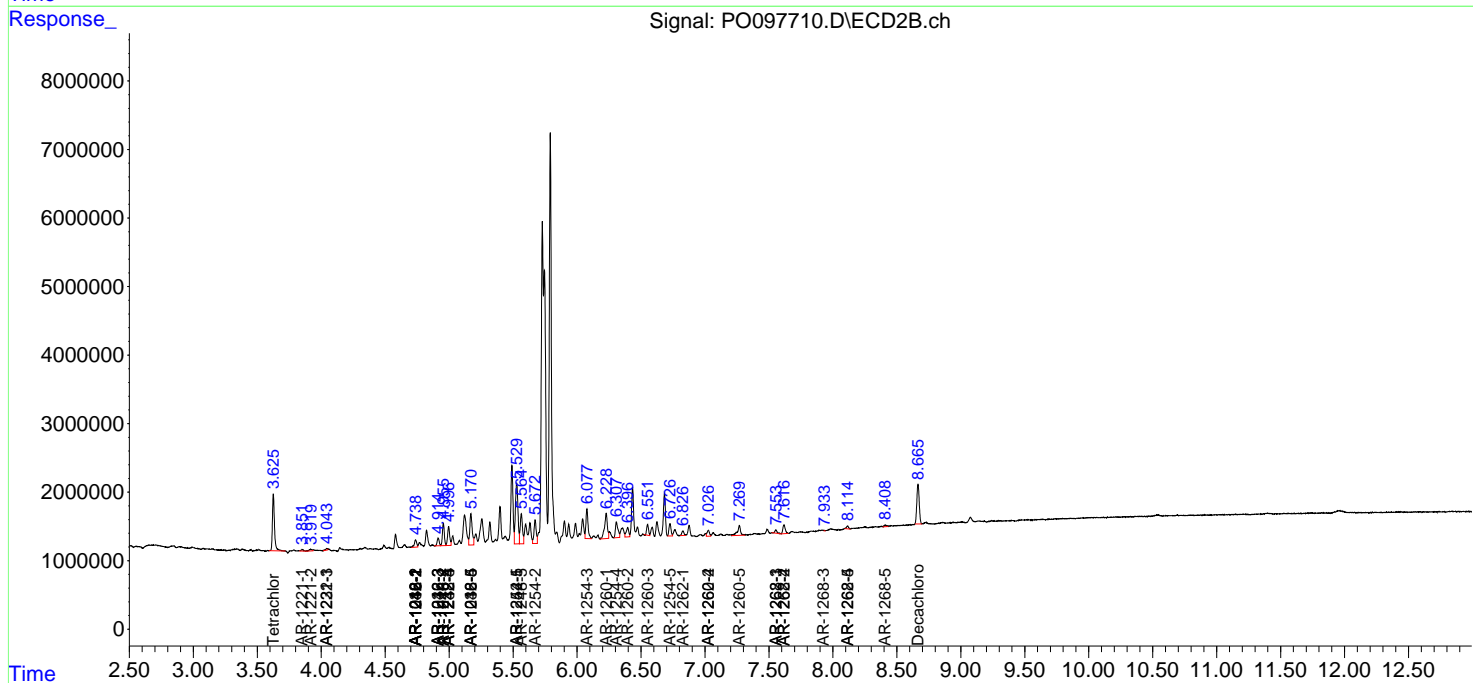
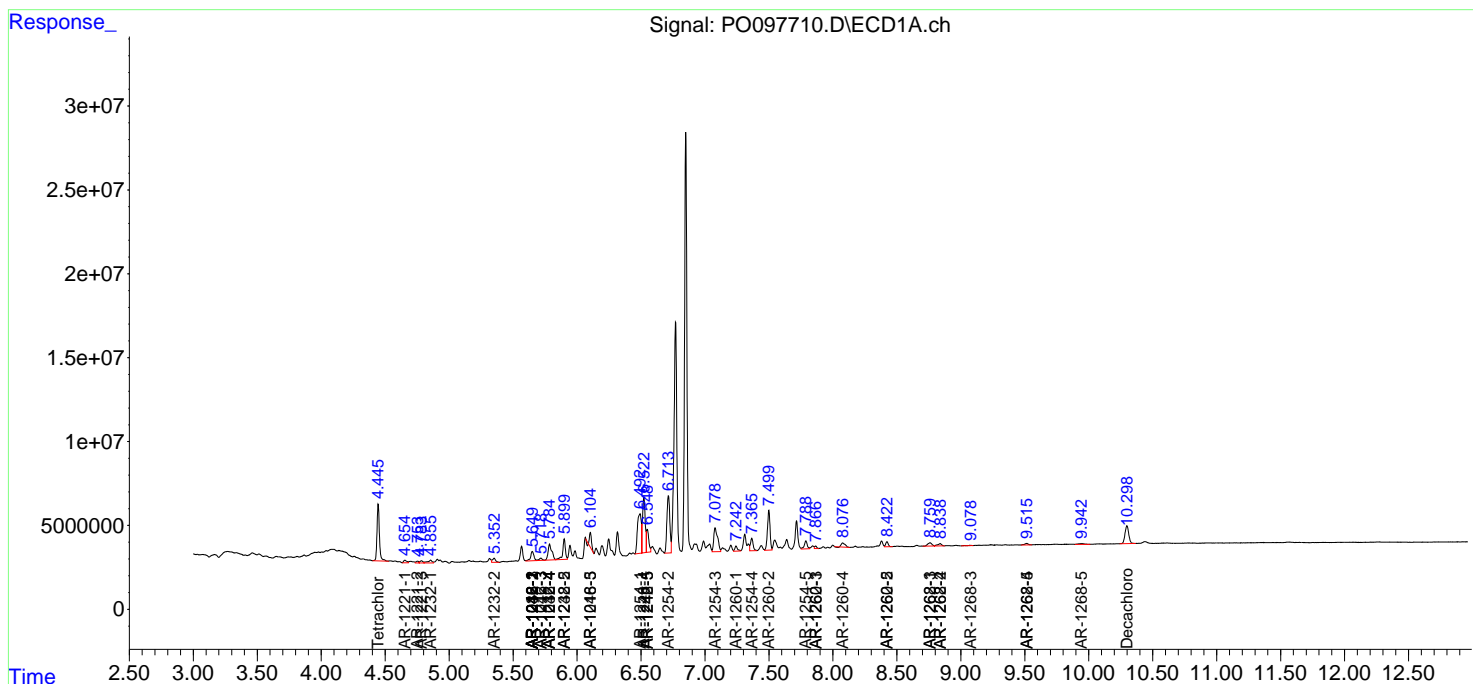
(f)=RT Delta > 1/2 Window (#)=Amounts differ by > 25% (m)=manual int.

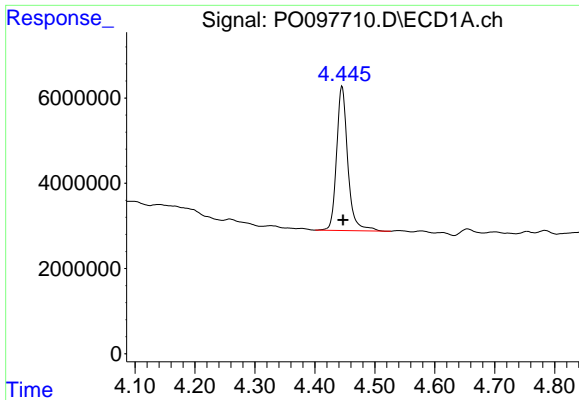
Data Path : Z:\pestpcbsrv\HPCHEM1\ECD\_O\Data\PO090523\  
 Data File : PO097710.D  
 Signal(s) : Signal #1: ECD1A.ch Signal #2: ECD2B.ch  
 Acq On : 05 Sep 2023 14:06  
 Operator : YP/AJ  
 Sample : 04274-01  
 Misc :  
 ALS Vial : 16 Sample Multiplier: 1

Instrument :  
 ECD\_O  
 ClientSampleId :  
 RT2683

Integration File signal 1: autoint1.e  
 Integration File signal 2: autoint2.e  
 Quant Time: Sep 06 01:28:15 2023  
 Quant Method : Z:\pestpcbsrv\HPCHEM1\ECD\_O\methods\PO082823.M  
 Quant Title : GC EXTRACTABLES  
 QLast Update : Tue Aug 29 10:29:21 2023  
 Response via : Initial Calibration  
 Integrator: ChemStation

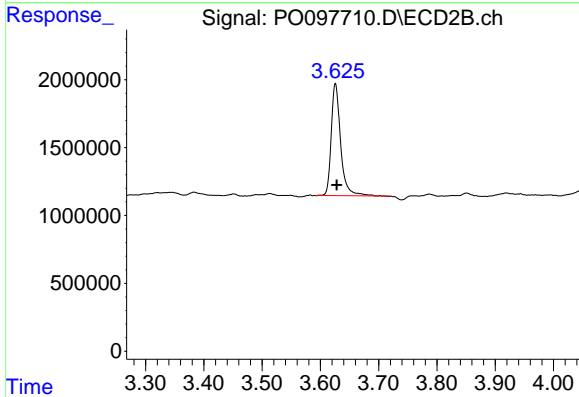
Volume Inj. : 2 µl  
 Signal #1 Phase : ZB-MR1 Signal #2 Phase: ZB-MR2  
 Signal #1 Info : 30Mx0.32mmx 0.50µ Signal #2 Info : 30M x 0.32mm x 0.25µm



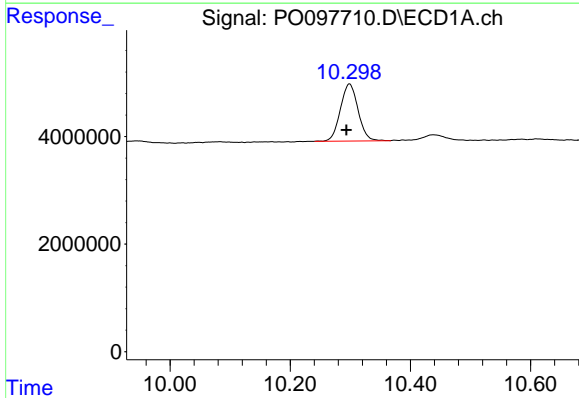


#1 Tetrachloro-m-xylene  
 R.T.: 4.445 min  
 Delta R.T.: -0.002 min  
 Response: 43984048  
 Conc: 13.18 ng/ml

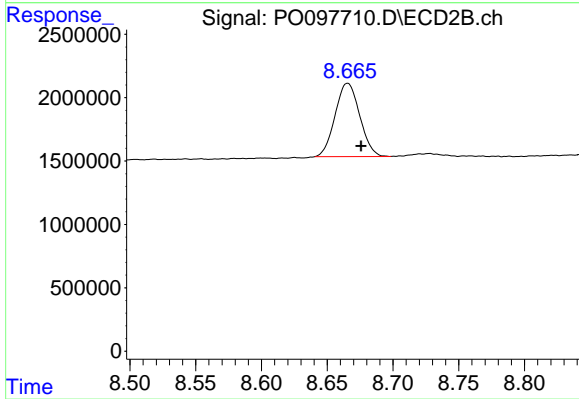
Instrument :  
 ECD\_O  
 ClientSampleId :  
 RT2683



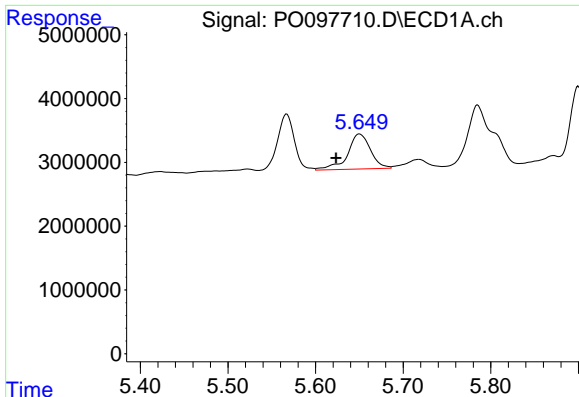
#1 Tetrachloro-m-xylene  
 R.T.: 3.626 min  
 Delta R.T.: -0.002 min  
 Response: 9271376  
 Conc: 13.74 ng/ml



#2 Decachlorobiphenyl  
 R.T.: 10.299 min  
 Delta R.T.: 0.005 min  
 Response: 21632603  
 Conc: 11.79 ng/ml



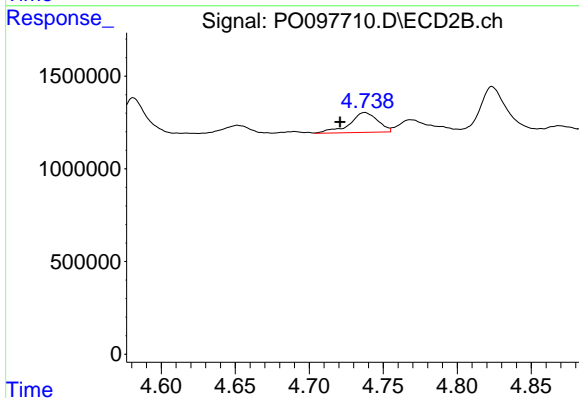
#2 Decachlorobiphenyl  
 R.T.: 8.666 min  
 Delta R.T.: -0.010 min  
 Response: 7535688  
 Conc: 13.13 ng/ml



#3 AR-1016-1

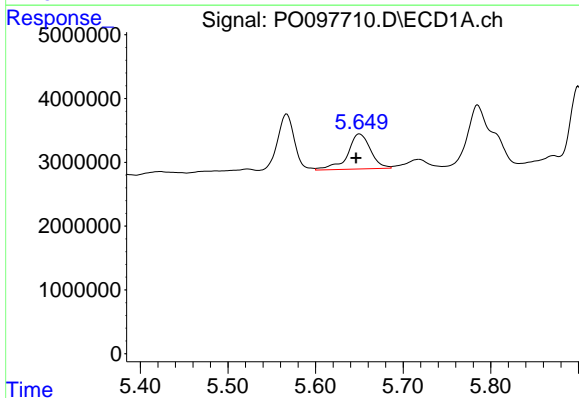
R.T.: 5.650 min  
 Delta R.T.: 0.027 min  
 Response: 10009350  
 Conc: 111.20 ng/ml

Instrument :  
 ECD\_O  
 ClientSampleId :  
 RT2683



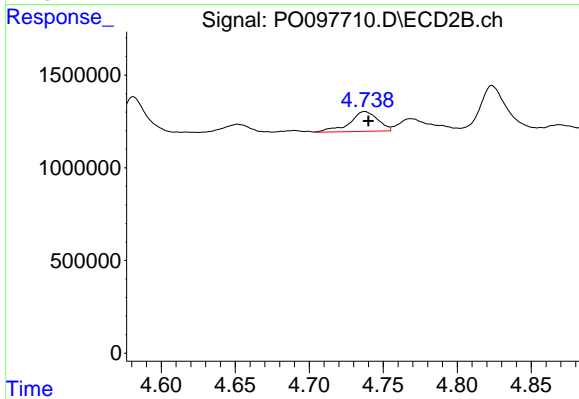
#3 AR-1016-1

R.T.: 4.738 min  
 Delta R.T.: 0.017 min  
 Response: 1427610  
 Conc: 65.58 ng/ml



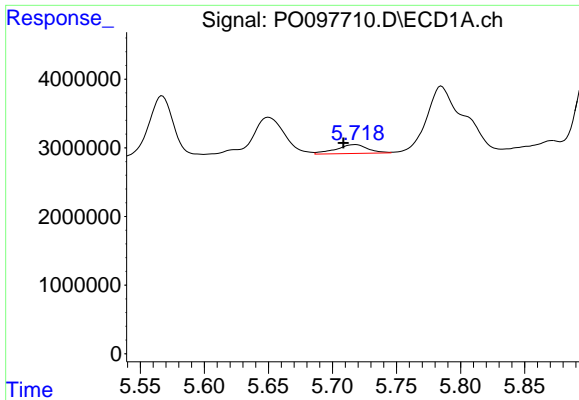
#4 AR-1016-2

R.T.: 5.650 min  
 Delta R.T.: 0.004 min  
 Response: 10009350  
 Conc: 72.14 ng/ml



#4 AR-1016-2

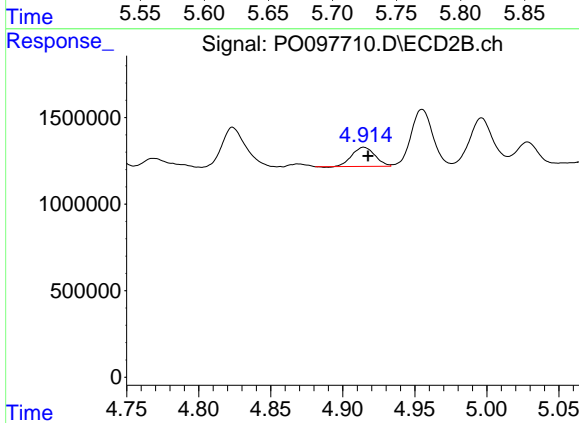
R.T.: 4.738 min  
 Delta R.T.: -0.002 min  
 Response: 1427610  
 Conc: 47.31 ng/ml



#5 AR-1016-3

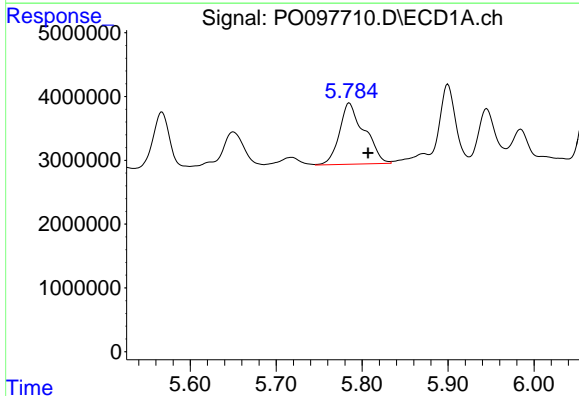
R.T.: 5.718 min  
 Delta R.T.: 0.009 min  
 Response: 2266248  
 Conc: 25.00 ng/ml

Instrument :  
 ECD\_O  
 ClientSampleId :  
 RT2683



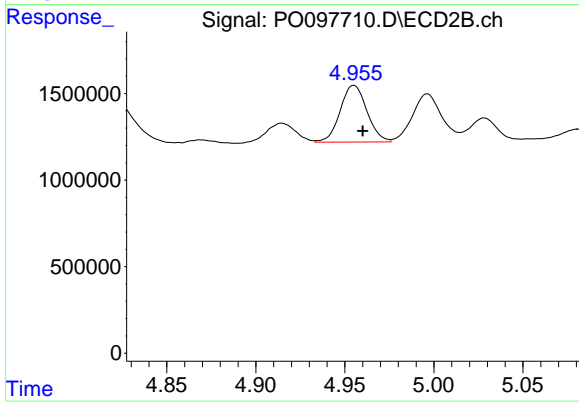
#5 AR-1016-3

R.T.: 4.915 min  
 Delta R.T.: -0.003 min  
 Response: 1228694  
 Conc: 76.06 ng/ml



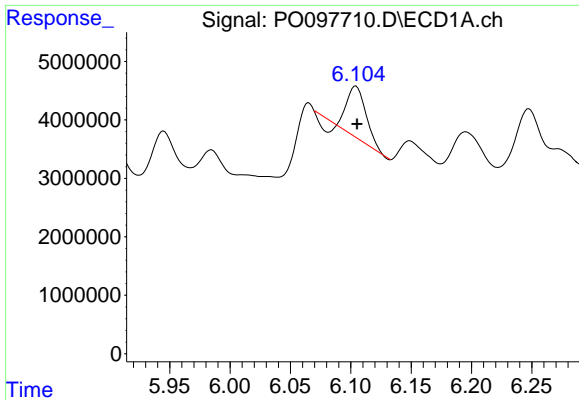
#6 AR-1016-4

R.T.: 5.785 min  
 Delta R.T.: -0.022 min  
 Response: 19240050  
 Conc: 277.50 ng/ml



#6 AR-1016-4

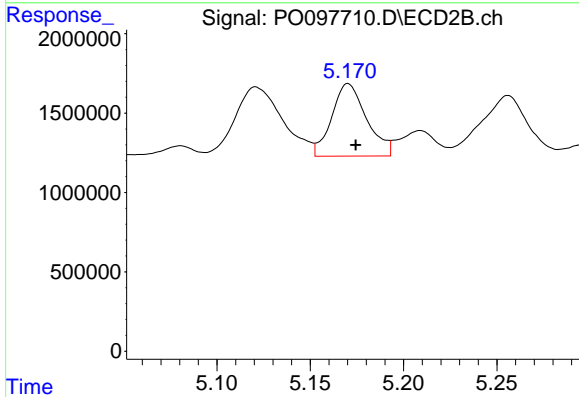
R.T.: 4.955 min  
 Delta R.T.: -0.005 min  
 Response: 3440932  
 Conc: 239.80 ng/ml



#7 AR-1016-5

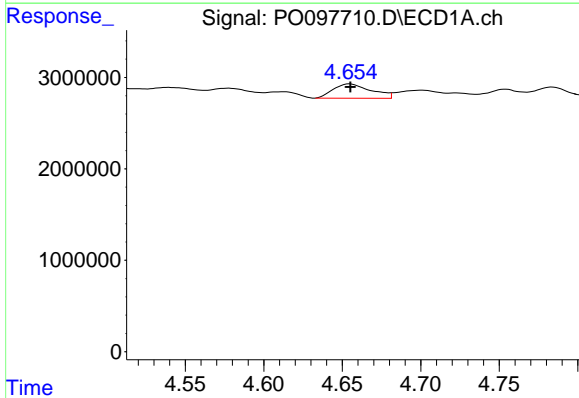
R.T.: 6.104 min  
 Delta R.T.: 0.000 min  
 Response: 8395408  
 Conc: 118.20 ng/ml

Instrument :  
 ECD\_O  
 ClientSampleId :  
 RT2683



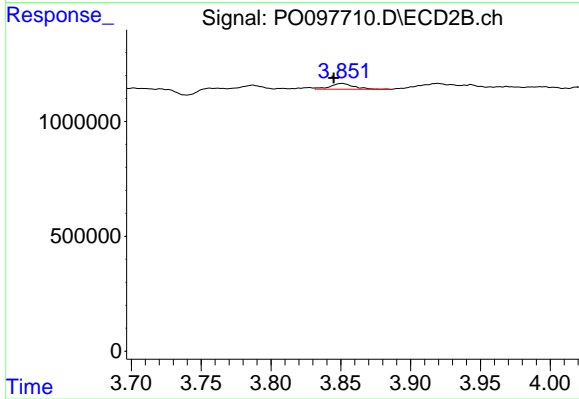
#7 AR-1016-5

R.T.: 5.170 min  
 Delta R.T.: -0.004 min  
 Response: 5945858  
 Conc: 325.12 ng/ml



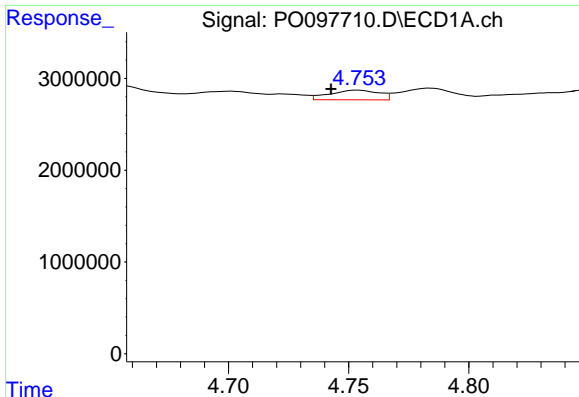
#8 AR-1221-1

R.T.: 4.655 min  
 Delta R.T.: 0.000 min  
 Response: 2646188  
 Conc: 65.75 ng/ml



#8 AR-1221-1

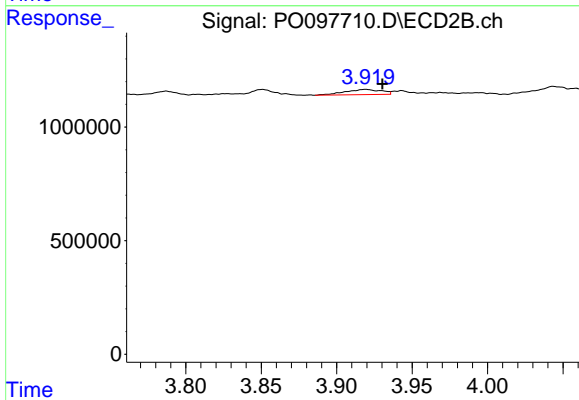
R.T.: 3.851 min  
 Delta R.T.: 0.006 min  
 Response: 294075  
 Conc: 35.92 ng/ml



#9 AR-1221-2

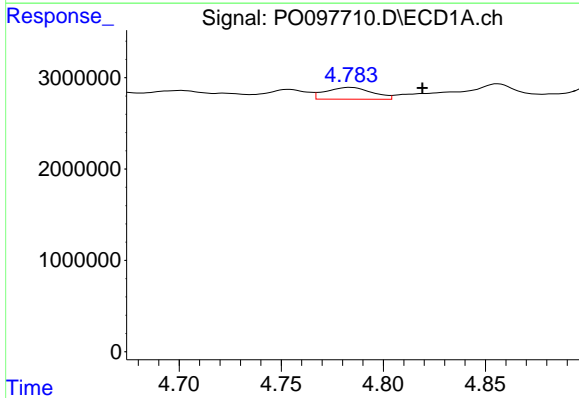
R.T.: 4.754 min  
 Delta R.T.: 0.011 min  
 Response: 1498095  
 Conc: 49.84 ng/ml

Instrument :  
 ECD\_O  
 ClientSampleId :  
 RT2683



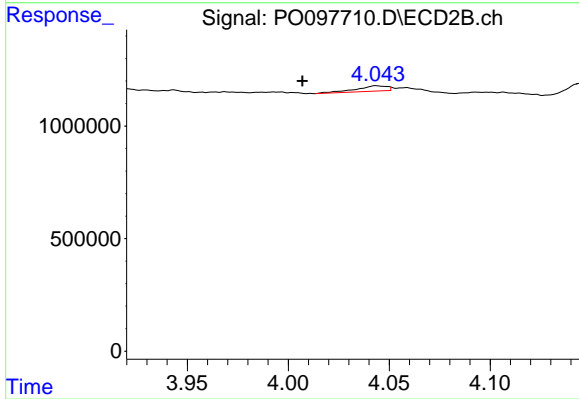
#9 AR-1221-2

R.T.: 3.919 min  
 Delta R.T.: -0.011 min  
 Response: 388179  
 Conc: 66.98 ng/ml



#10 AR-1221-3

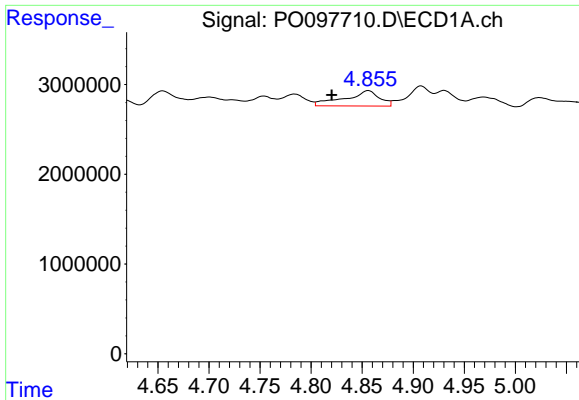
R.T.: 4.784 min  
 Delta R.T.: -0.035 min  
 Response: 2032730  
 Conc: 22.82 ng/ml



#10 AR-1221-3

R.T.: 4.044 min  
 Delta R.T.: 0.037 min  
 Response: 263883  
 Conc: 14.35 ng/ml

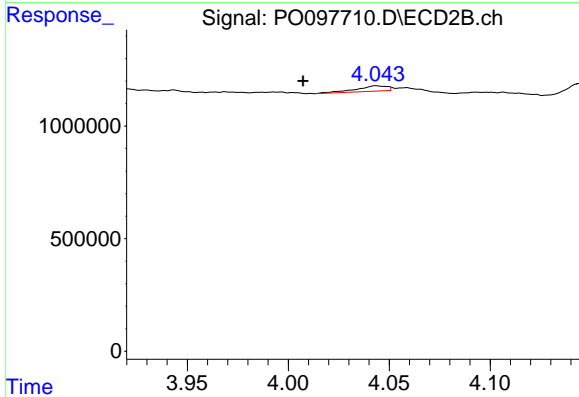




#11 AR-1232-1

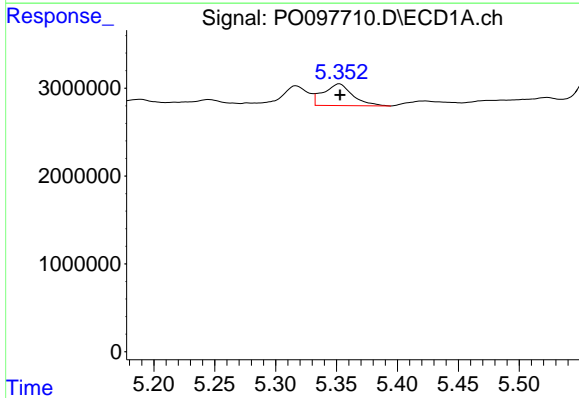
R.T.: 4.856 min  
 Delta R.T.: 0.036 min  
 Response: 4034226  
 Conc: 54.70 ng/ml

Instrument :  
 ECD\_O  
 ClientSampleId :  
 RT2683



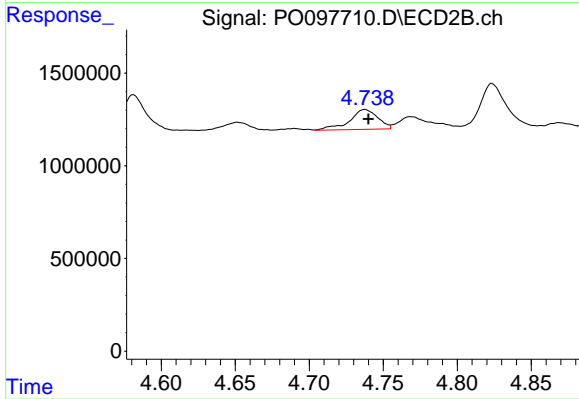
#11 AR-1232-1

R.T.: 4.044 min  
 Delta R.T.: 0.036 min  
 Response: 263883  
 Conc: 17.51 ng/ml



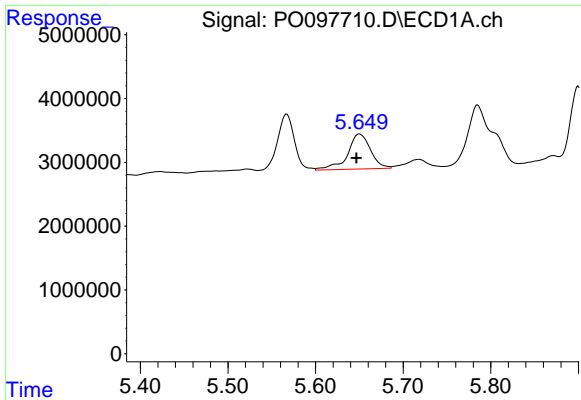
#12 AR-1232-2

R.T.: 5.352 min  
 Delta R.T.: 0.000 min  
 Response: 4115217  
 Conc: 107.39 ng/ml



#12 AR-1232-2

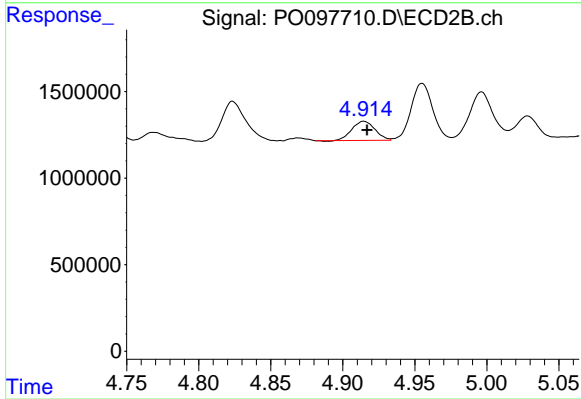
R.T.: 4.738 min  
 Delta R.T.: -0.003 min  
 Response: 1427610  
 Conc: 102.26 ng/ml



#13 AR-1232-3

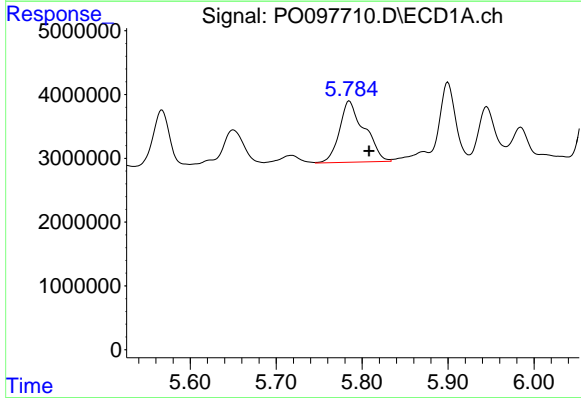
R.T.: 5.650 min  
 Delta R.T.: 0.004 min  
 Response: 10009350  
 Conc: 154.76 ng/ml

Instrument :  
 ECD\_O  
 ClientSampleId :  
 RT2683



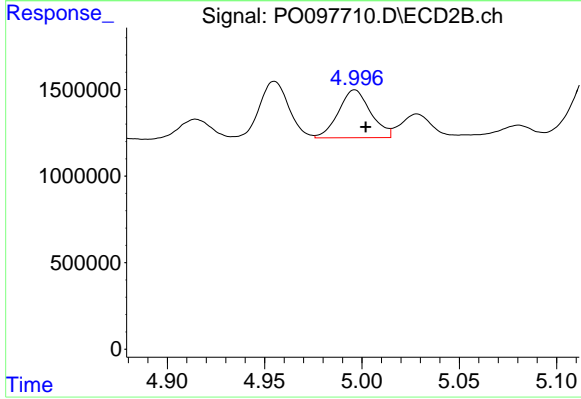
#13 AR-1232-3

R.T.: 4.915 min  
 Delta R.T.: -0.002 min  
 Response: 1228694  
 Conc: 174.94 ng/ml



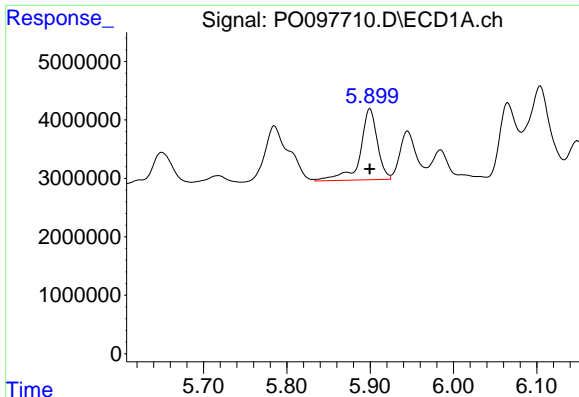
#14 AR-1232-4

R.T.: 5.785 min  
 Delta R.T.: -0.023 min  
 Response: 19240050  
 Conc: 604.01 ng/ml



#14 AR-1232-4

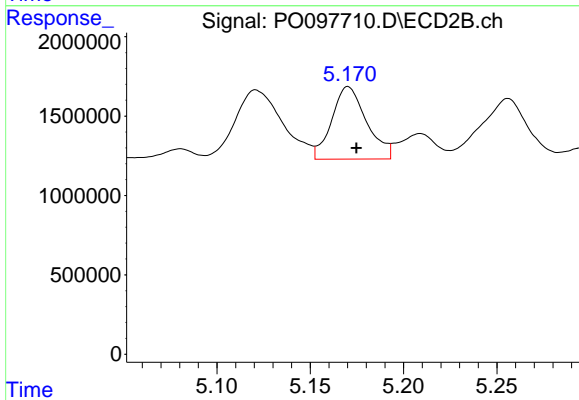
R.T.: 4.996 min  
 Delta R.T.: -0.006 min  
 Response: 3191143  
 Conc: 451.33 ng/ml



#15 AR-1232-5

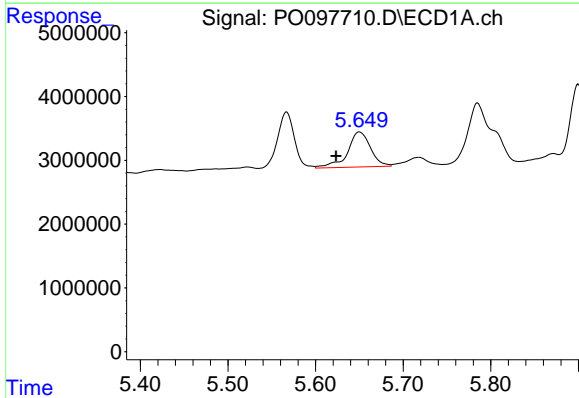
R.T.: 5.900 min  
 Delta R.T.: 0.000 min  
 Response: 17471897  
 Conc: 593.79 ng/ml

Instrument :  
 ECD\_O  
 ClientSampleId :  
 RT2683



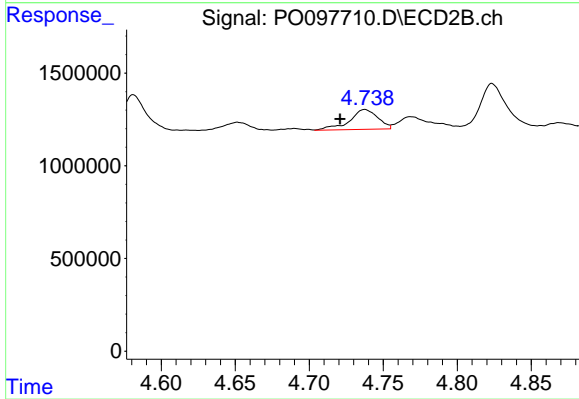
#15 AR-1232-5

R.T.: 5.170 min  
 Delta R.T.: -0.004 min  
 Response: 5945858  
 Conc: 755.40 ng/ml



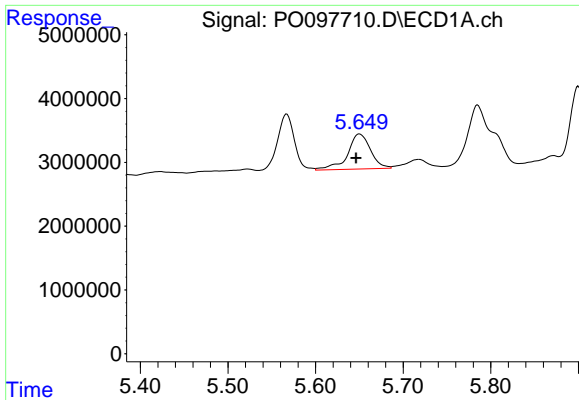
#16 AR-1242-1

R.T.: 5.650 min  
 Delta R.T.: 0.027 min  
 Response: 10009350  
 Conc: 123.59 ng/ml



#16 AR-1242-1

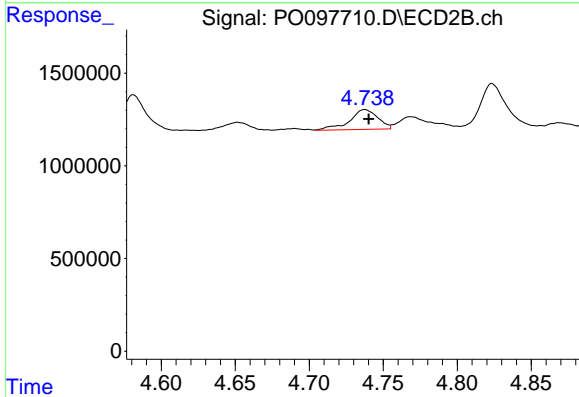
R.T.: 4.738 min  
 Delta R.T.: 0.017 min  
 Response: 1427610  
 Conc: 74.01 ng/ml



#17 AR-1242-2

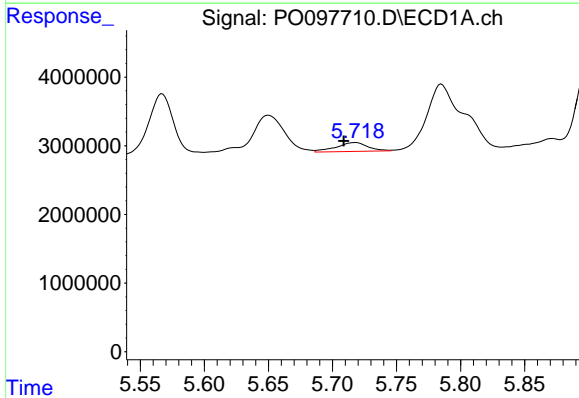
R.T.: 5.650 min  
 Delta R.T.: 0.004 min  
 Response: 10009350  
 Conc: 80.15 ng/ml

Instrument :  
 ECD\_O  
 ClientSampleId :  
 RT2683



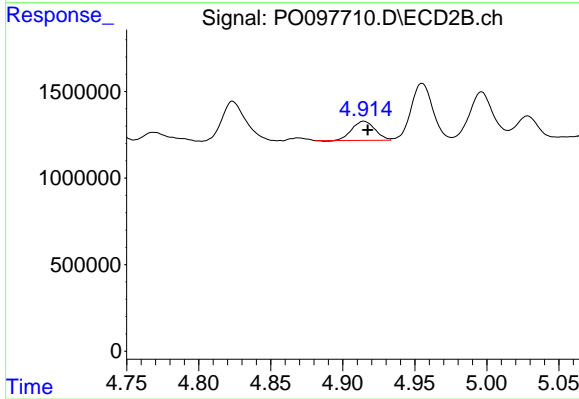
#17 AR-1242-2

R.T.: 4.738 min  
 Delta R.T.: -0.003 min  
 Response: 1427610  
 Conc: 52.45 ng/ml



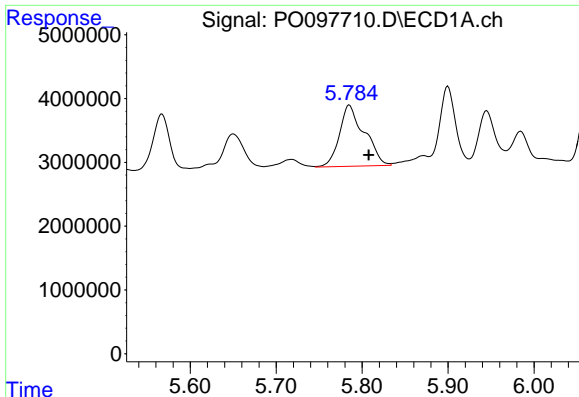
#18 AR-1242-3

R.T.: 5.718 min  
 Delta R.T.: 0.009 min  
 Response: 2266248  
 Conc: 27.56 ng/ml



#18 AR-1242-3

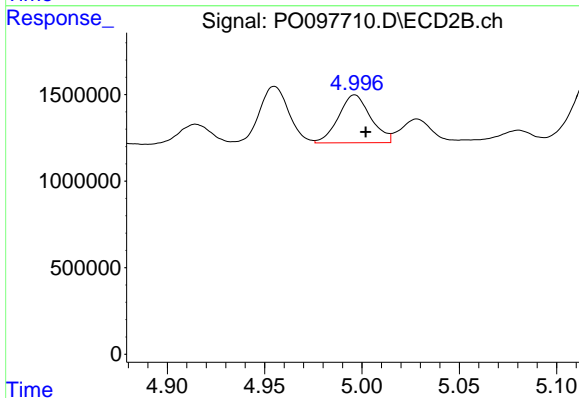
R.T.: 4.915 min  
 Delta R.T.: -0.003 min  
 Response: 1228694  
 Conc: 85.62 ng/ml



#19 AR-1242-4

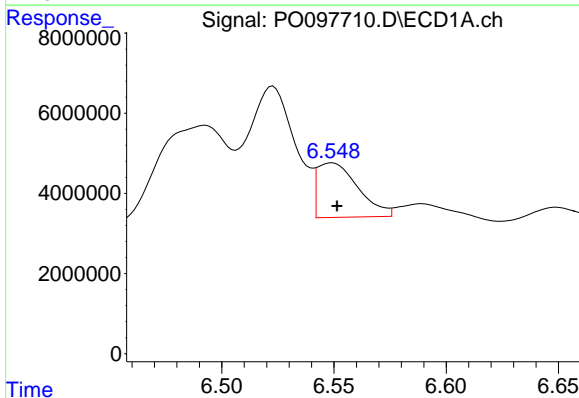
R.T.: 5.785 min  
 Delta R.T.: -0.023 min  
 Response: 19240050  
 Conc: 306.49 ng/ml

Instrument :  
 ECD\_O  
 ClientSampleId :  
 RT2683



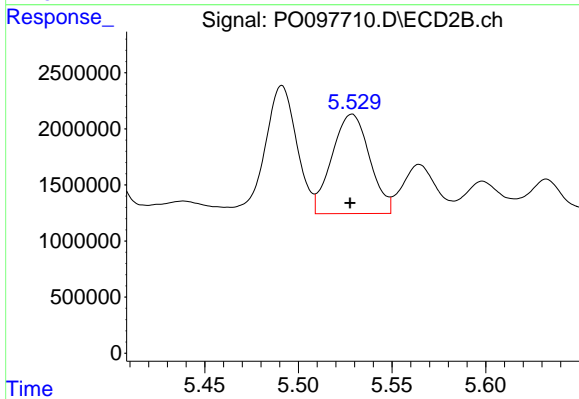
#19 AR-1242-4

R.T.: 4.996 min  
 Delta R.T.: -0.006 min  
 Response: 3191143  
 Conc: 201.48 ng/ml



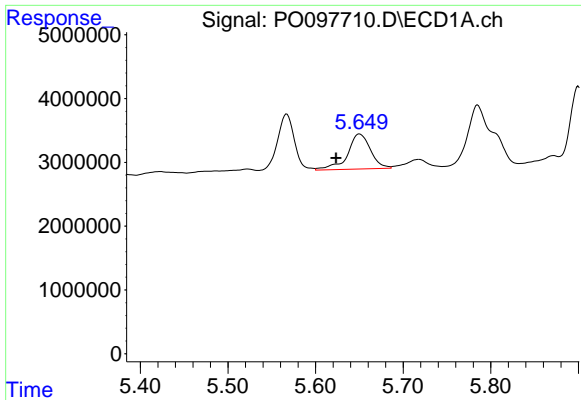
#20 AR-1242-5

R.T.: 6.549 min  
 Delta R.T.: -0.002 min  
 Response: 17160293  
 Conc: 272.84 ng/ml



#20 AR-1242-5

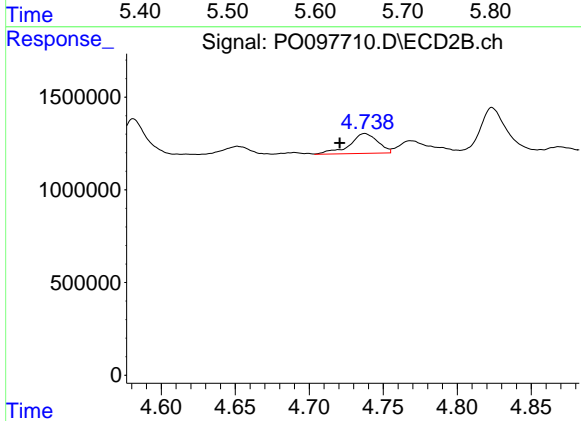
R.T.: 5.529 min  
 Delta R.T.: 0.000 min  
 Response: 12426021  
 Conc: 704.09 ng/ml



#21 AR-1248-1

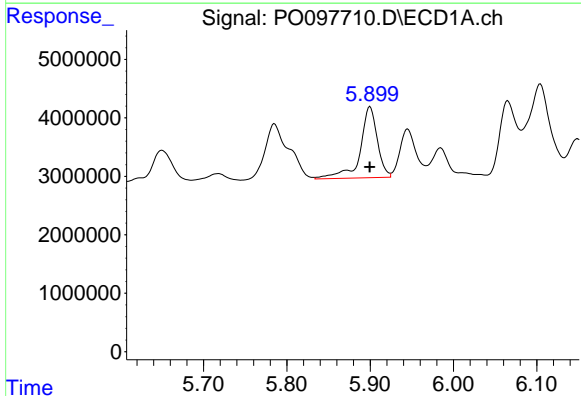
R.T.: 5.650 min  
 Delta R.T.: 0.027 min  
 Response: 10009350  
 Conc: 169.71 ng/ml

Instrument :  
 ECD\_O  
 ClientSampleId :  
 RT2683



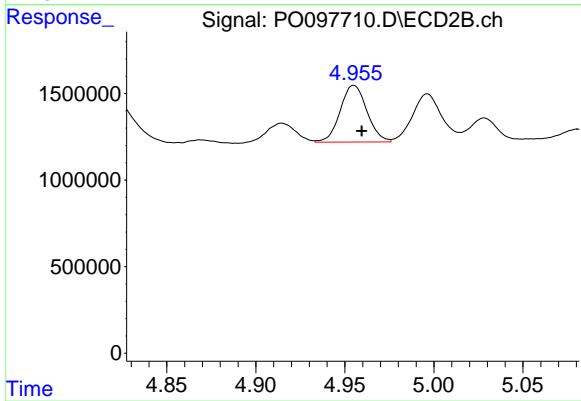
#21 AR-1248-1

R.T.: 4.738 min  
 Delta R.T.: 0.017 min  
 Response: 1427610  
 Conc: 103.89 ng/ml



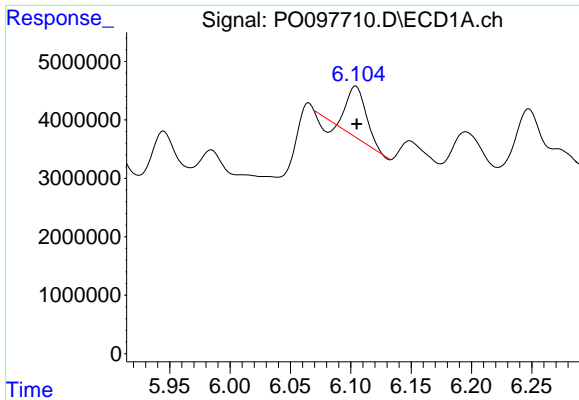
#22 AR-1248-2

R.T.: 5.900 min  
 Delta R.T.: 0.000 min  
 Response: 17471897  
 Conc: 176.65 ng/ml



#22 AR-1248-2

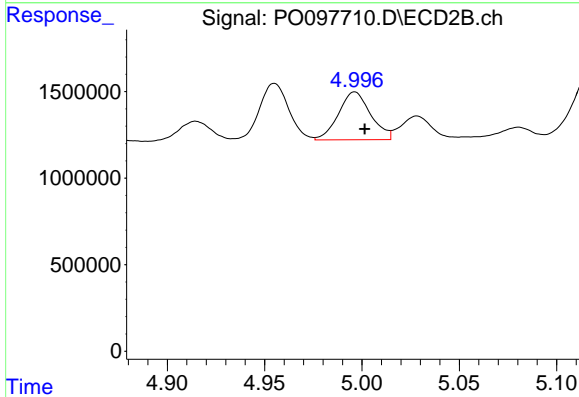
R.T.: 4.955 min  
 Delta R.T.: -0.004 min  
 Response: 3440932  
 Conc: 155.18 ng/ml



#23 AR-1248-3

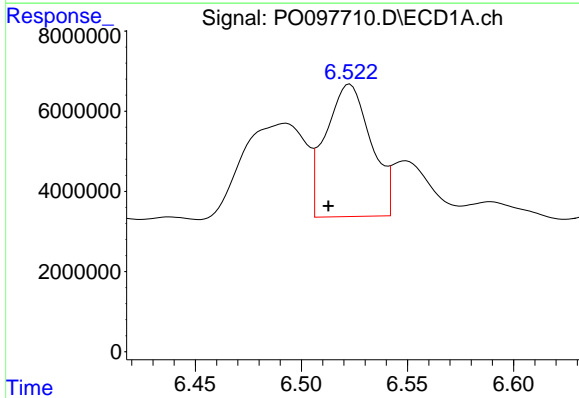
R.T.: 6.104 min  
 Delta R.T.: 0.000 min  
 Response: 8395408  
 Conc: 81.03 ng/ml

Instrument :  
 ECD\_O  
 ClientSampleId :  
 RT2683



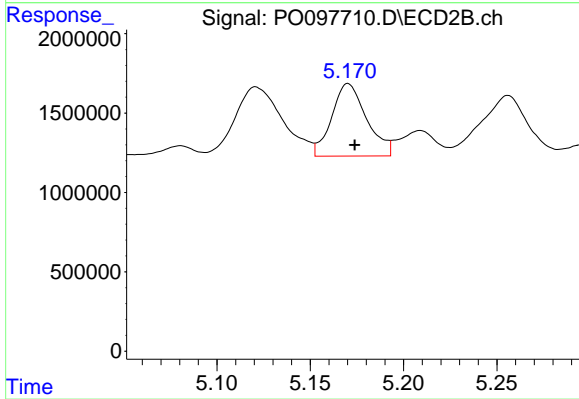
#23 AR-1248-3

R.T.: 4.996 min  
 Delta R.T.: -0.005 min  
 Response: 3191143  
 Conc: 138.79 ng/ml



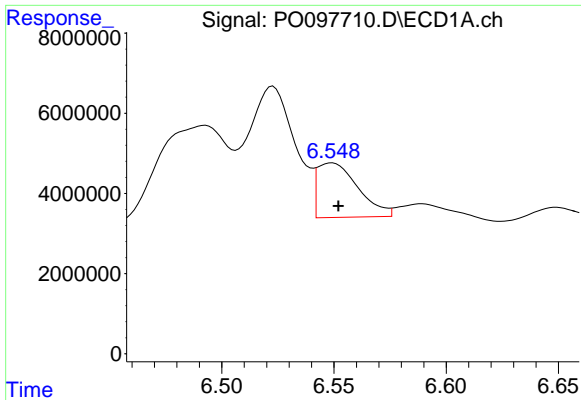
#24 AR-1248-4

R.T.: 6.523 min  
 Delta R.T.: 0.010 min  
 Response: 49056093  
 Conc: 536.26 ng/ml



#24 AR-1248-4

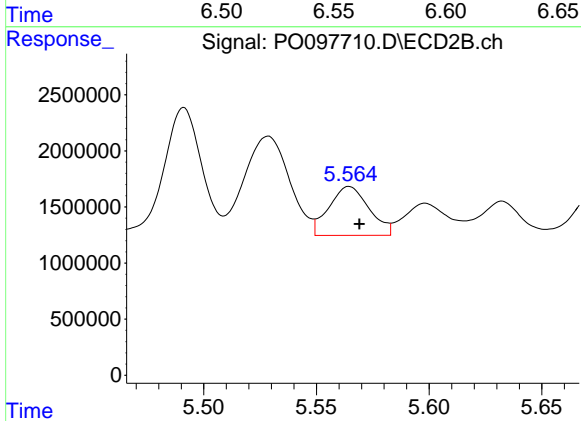
R.T.: 5.170 min  
 Delta R.T.: -0.004 min  
 Response: 5945858  
 Conc: 219.11 ng/ml



#25 AR-1248-5

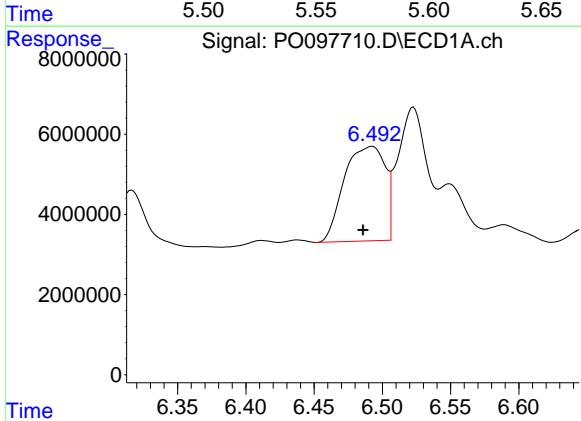
R.T.: 6.549 min  
 Delta R.T.: -0.003 min  
 Response: 17160293  
 Conc: 169.04 ng/ml

Instrument :  
 ECD\_O  
 ClientSampleId :  
 RT2683



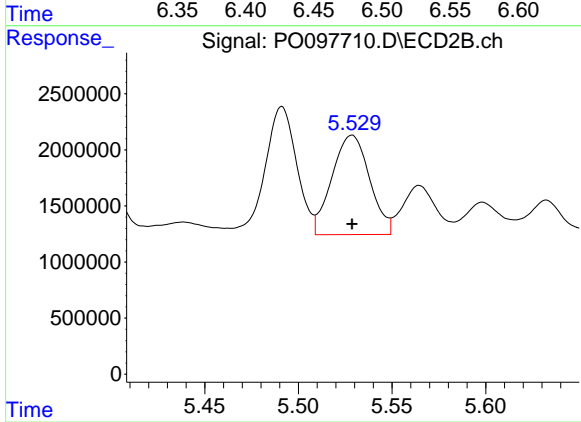
#25 AR-1248-5

R.T.: 5.565 min  
 Delta R.T.: -0.004 min  
 Response: 5421763  
 Conc: 239.82 ng/ml



#26 AR-1254-1

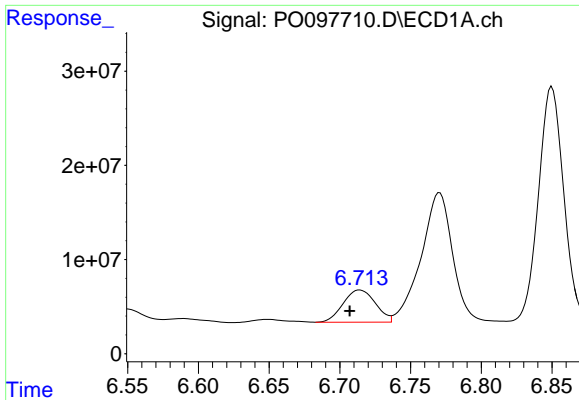
R.T.: 6.492 min  
 Delta R.T.: 0.006 min  
 Response: 48881385  
 Conc: 444.61 ng/ml



#26 AR-1254-1

R.T.: 5.529 min  
 Delta R.T.: 0.000 min  
 Response: 12426021  
 Conc: 321.96 ng/ml

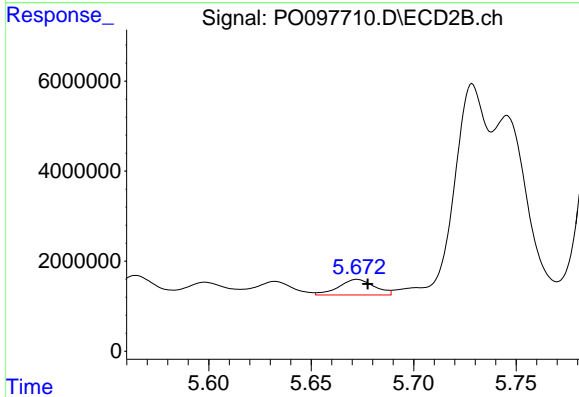




#27 AR-1254-2

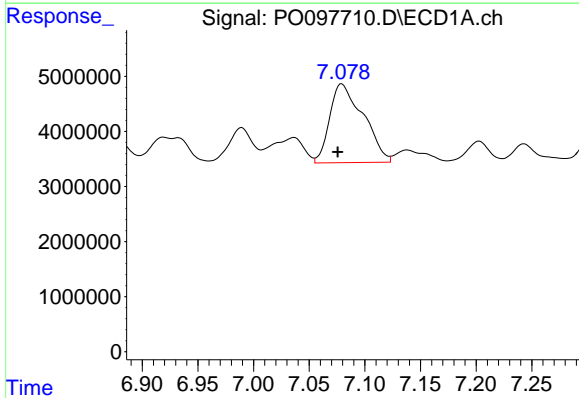
R.T.: 6.714 min  
 Delta R.T.: 0.007 min  
 Response: 54230084  
 Conc: 332.78 ng/ml

Instrument :  
 ECD\_O  
 ClientSampleId :  
 RT2683



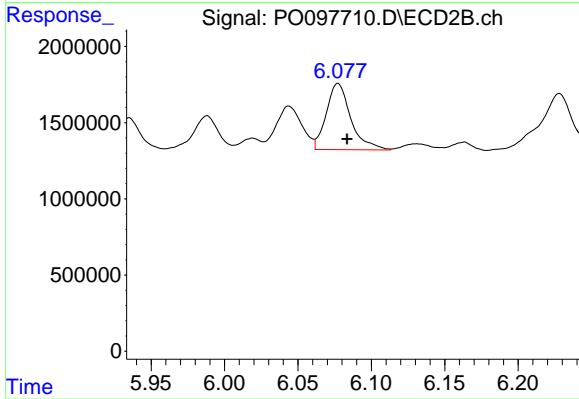
#27 AR-1254-2

R.T.: 5.672 min  
 Delta R.T.: -0.005 min  
 Response: 4147851  
 Conc: 121.78 ng/ml



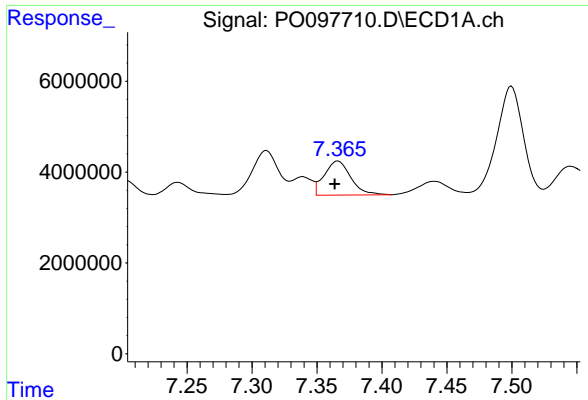
#28 AR-1254-3

R.T.: 7.079 min  
 Delta R.T.: 0.004 min  
 Response: 30034227  
 Conc: 184.42 ng/ml



#28 AR-1254-3

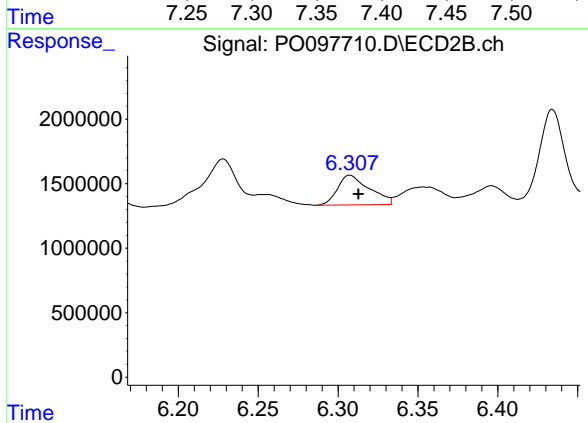
R.T.: 6.077 min  
 Delta R.T.: -0.006 min  
 Response: 5056462  
 Conc: 95.30 ng/ml



#29 AR-1254-4

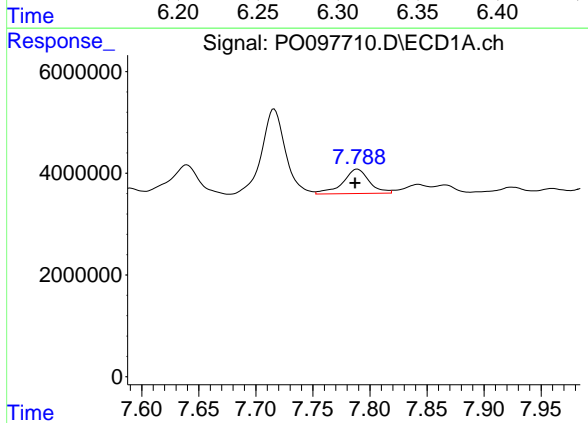
R.T.: 7.366 min  
 Delta R.T.: 0.002 min  
 Response: 10664143  
 Conc: 109.41 ng/ml

Instrument :  
 ECD\_O  
 ClientSampleId :  
 RT2683



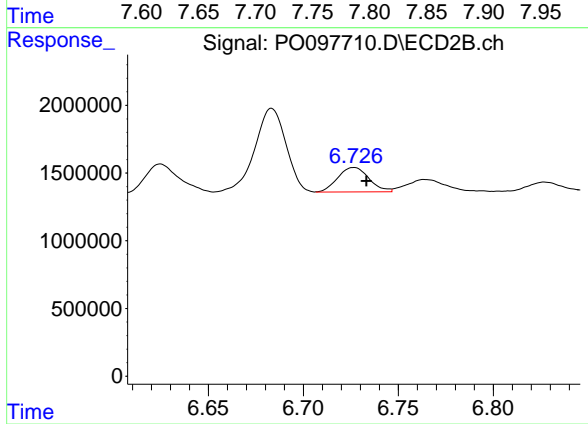
#29 AR-1254-4

R.T.: 6.307 min  
 Delta R.T.: -0.005 min  
 Response: 3190415  
 Conc: 117.00 ng/ml



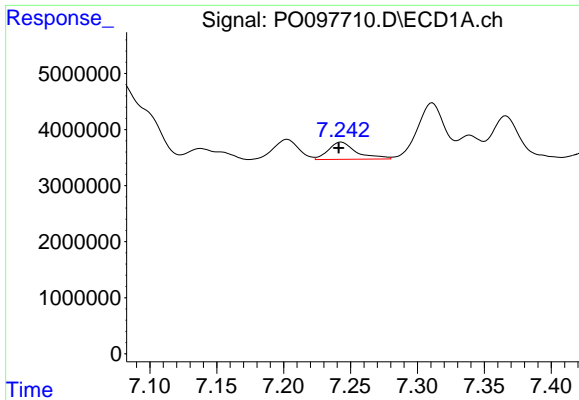
#30 AR-1254-5

R.T.: 7.789 min  
 Delta R.T.: 0.002 min  
 Response: 7785111  
 Conc: 68.94 ng/ml



#30 AR-1254-5

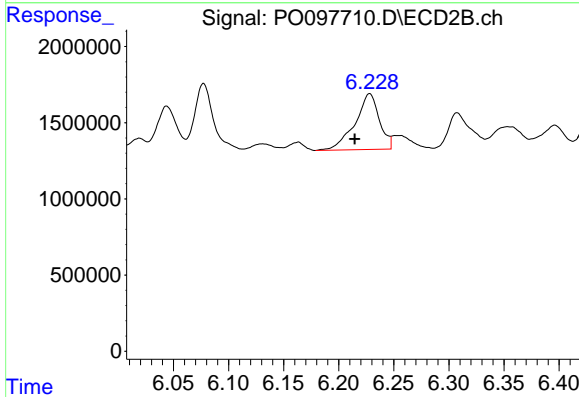
R.T.: 6.727 min  
 Delta R.T.: -0.006 min  
 Response: 2061408  
 Conc: 46.76 ng/ml



#31 AR-1260-1

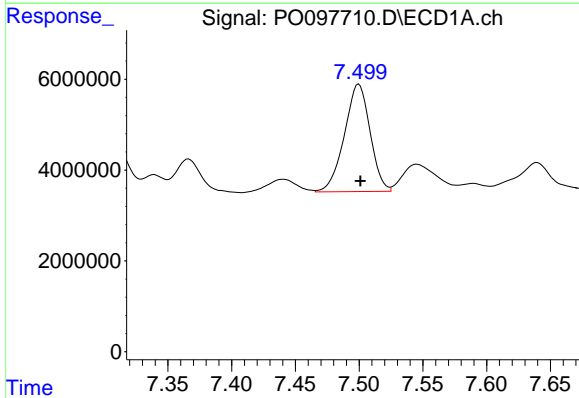
R.T.: 7.243 min  
 Delta R.T.: 0.002 min  
 Response: 4517115  
 Conc: 35.39 ng/ml

Instrument :  
 ECD\_O  
 ClientSampleId :  
 RT2683



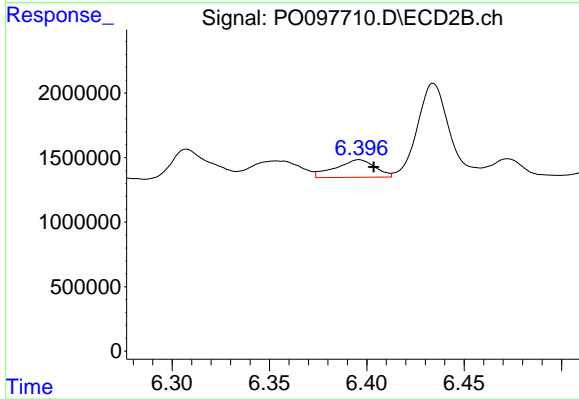
#31 AR-1260-1

R.T.: 6.228 min  
 Delta R.T.: 0.014 min  
 Response: 5633832  
 Conc: 150.84 ng/ml



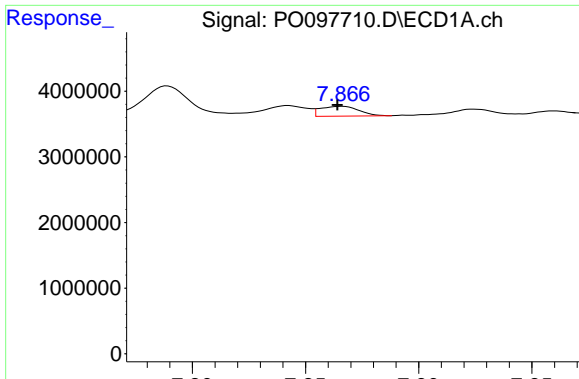
#32 AR-1260-2

R.T.: 7.500 min  
 Delta R.T.: -0.001 min  
 Response: 33202848  
 Conc: 243.66 ng/ml



#32 AR-1260-2

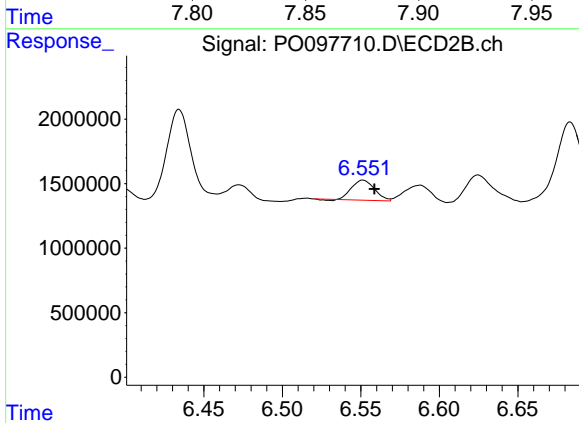
R.T.: 6.396 min  
 Delta R.T.: -0.007 min  
 Response: 1932406  
 Conc: 45.67 ng/ml



#33 AR-1260-3

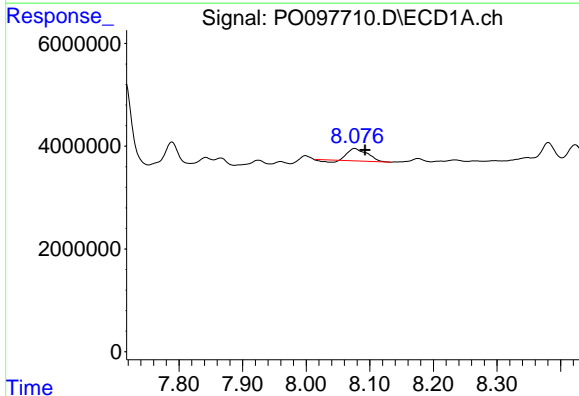
R.T.: 7.866 min  
 Delta R.T.: 0.002 min  
 Response: 1768518  
 Conc: 16.73 ng/ml

Instrument :  
 ECD\_O  
 ClientSampleId :  
 RT2683



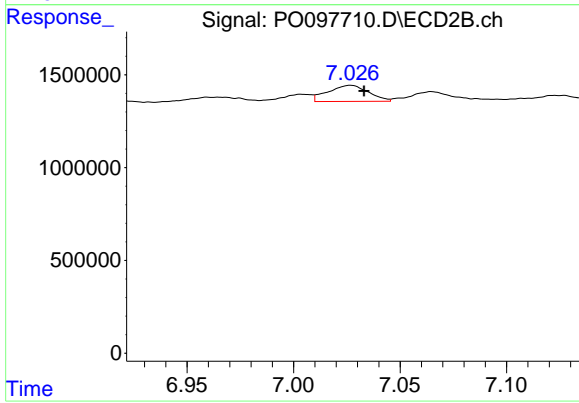
#33 AR-1260-3

R.T.: 6.551 min  
 Delta R.T.: -0.007 min  
 Response: 1561053  
 Conc: 37.29 ng/ml



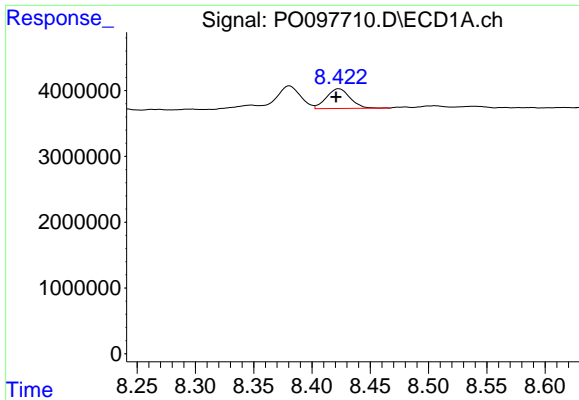
#34 AR-1260-4

R.T.: 8.076 min  
 Delta R.T.: -0.016 min  
 Response: 4820242  
 Conc: 42.61 ng/ml



#34 AR-1260-4

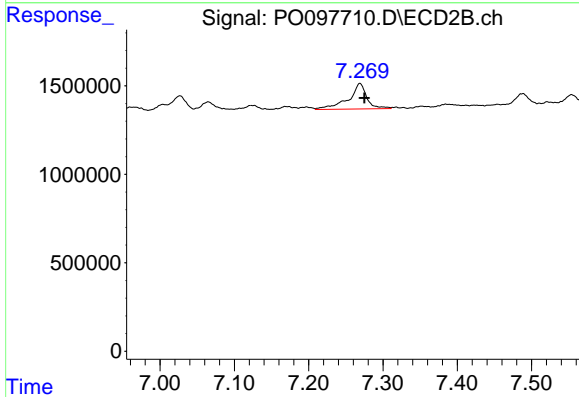
R.T.: 7.027 min  
 Delta R.T.: -0.006 min  
 Response: 1147952  
 Conc: 35.49 ng/ml



#35 AR-1260-5

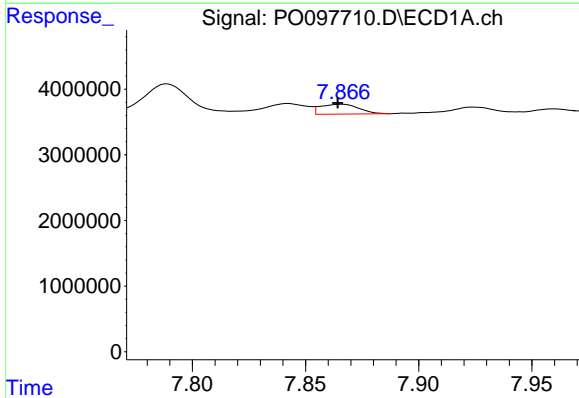
R.T.: 8.423 min  
 Delta R.T.: 0.003 min  
 Response: 4222629  
 Conc: 22.46 ng/ml

Instrument :  
 ECD\_O  
 ClientSampleId :  
 RT2683



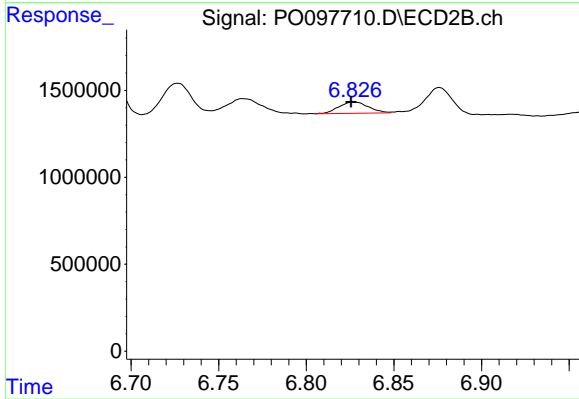
#35 AR-1260-5

R.T.: 7.269 min  
 Delta R.T.: -0.006 min  
 Response: 2480992  
 Conc: 37.57 ng/ml



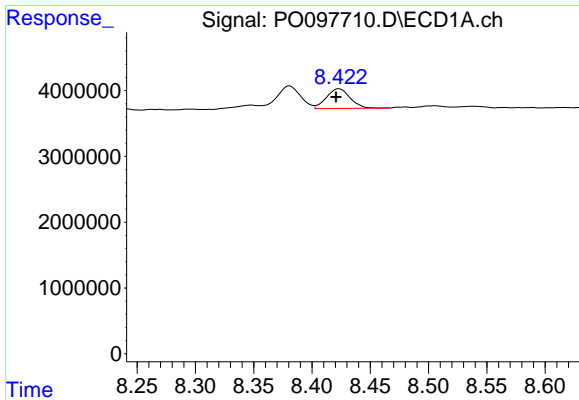
#36 AR-1262-1

R.T.: 7.866 min  
 Delta R.T.: 0.002 min  
 Response: 1768518  
 Conc: 11.75 ng/ml



#36 AR-1262-1

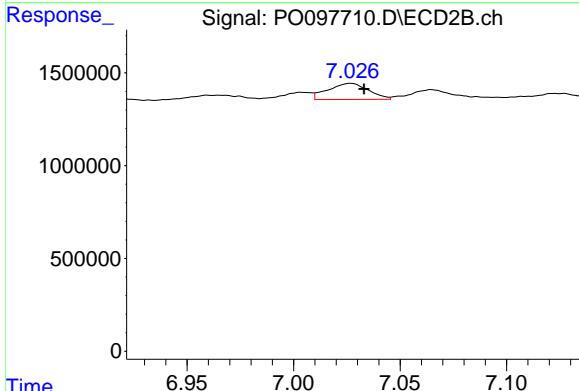
R.T.: 6.827 min  
 Delta R.T.: 0.002 min  
 Response: 755553  
 Conc: 37.65 ng/ml



#37 AR-1262-2

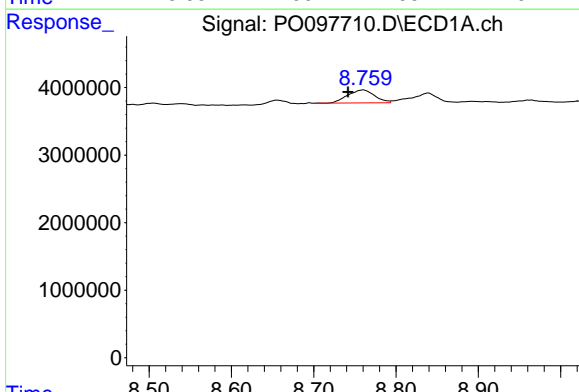
R.T.: 8.423 min  
 Delta R.T.: 0.003 min  
 Response: 4222629  
 Conc: 19.28 ng/ml

Instrument :  
 ECD\_O  
 ClientSampleId :  
 RT2683



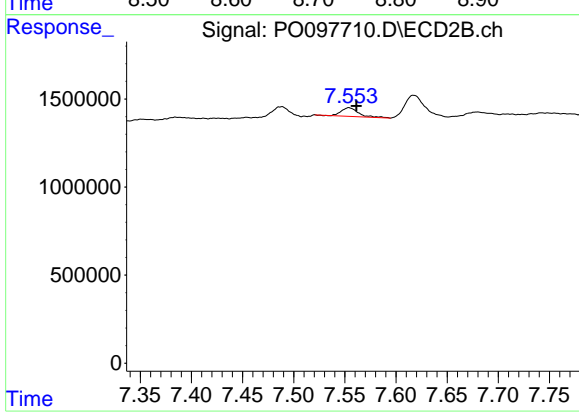
#37 AR-1262-2

R.T.: 7.027 min  
 Delta R.T.: -0.006 min  
 Response: 1147952  
 Conc: 26.27 ng/ml



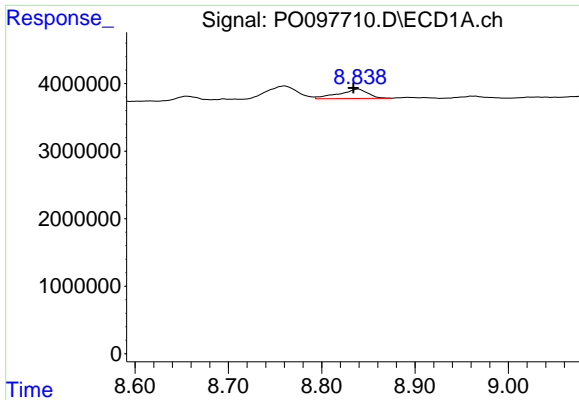
#38 AR-1262-3

R.T.: 8.760 min  
 Delta R.T.: 0.018 min  
 Response: 4364881  
 Conc: 28.15 ng/ml



#38 AR-1262-3

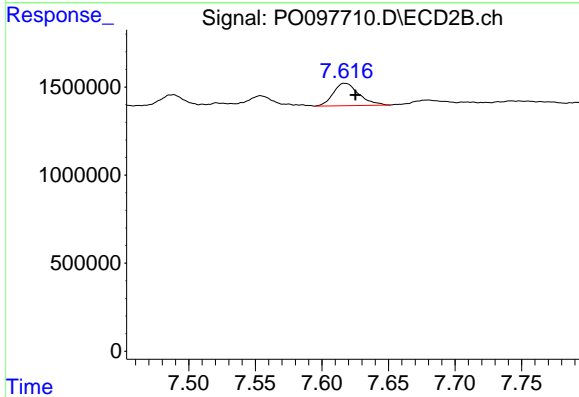
R.T.: 7.554 min  
 Delta R.T.: -0.008 min  
 Response: 578305  
 Conc: 18.56 ng/ml



#39 AR-1262-4

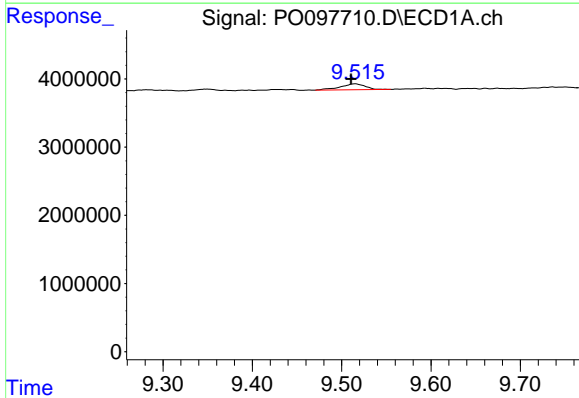
R.T.: 8.839 min  
 Delta R.T.: 0.005 min  
 Response: 3014766  
 Conc: 24.18 ng/ml

Instrument :  
 ECD\_O  
 ClientSampleId :  
 RT2683



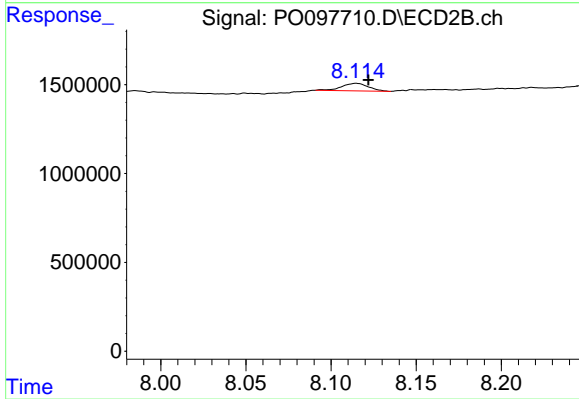
#39 AR-1262-4

R.T.: 7.617 min  
 Delta R.T.: -0.008 min  
 Response: 1706754  
 Conc: 30.34 ng/ml



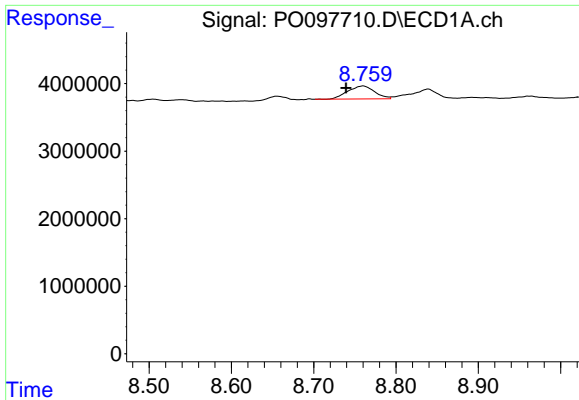
#40 AR-1262-5

R.T.: 9.515 min  
 Delta R.T.: 0.004 min  
 Response: 1708395  
 Conc: 24.84 ng/ml



#40 AR-1262-5

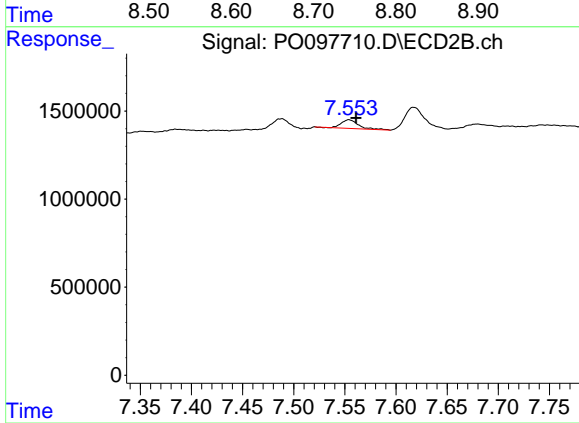
R.T.: 8.115 min  
 Delta R.T.: -0.007 min  
 Response: 467576  
 Conc: 19.88 ng/ml



#41 AR-1268-1

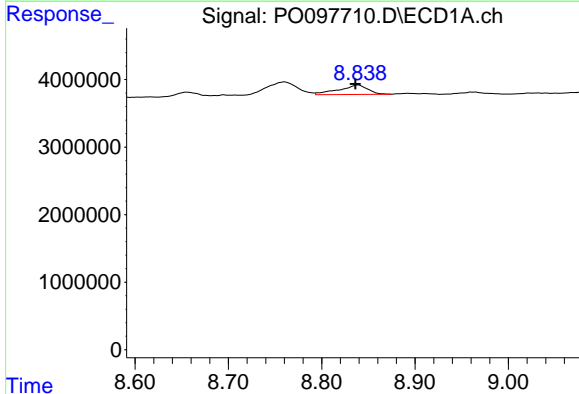
R.T.: 8.760 min  
 Delta R.T.: 0.021 min  
 Response: 4364881  
 Conc: 15.37 ng/ml

Instrument :  
 ECD\_O  
 ClientSampleId :  
 RT2683



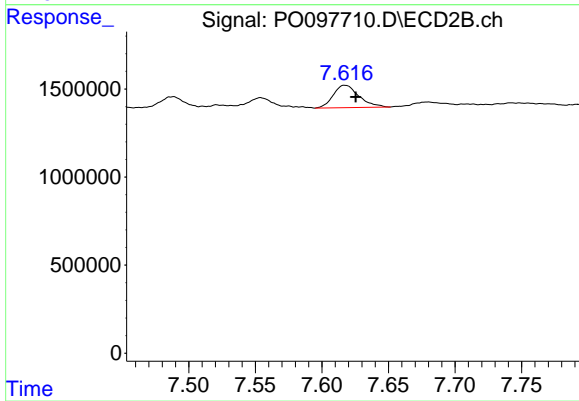
#41 AR-1268-1

R.T.: 7.554 min  
 Delta R.T.: -0.007 min  
 Response: 578305  
 Conc: 6.04 ng/ml



#42 AR-1268-2

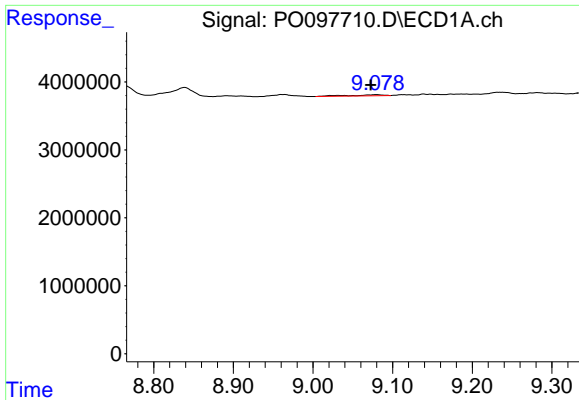
R.T.: 8.839 min  
 Delta R.T.: 0.003 min  
 Response: 3014766  
 Conc: 11.87 ng/ml



#42 AR-1268-2

R.T.: 7.617 min  
 Delta R.T.: -0.008 min  
 Response: 1706754  
 Conc: 20.59 ng/ml

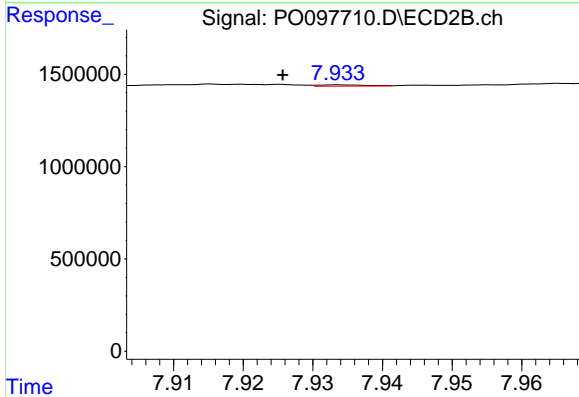




#43 AR-1268-3

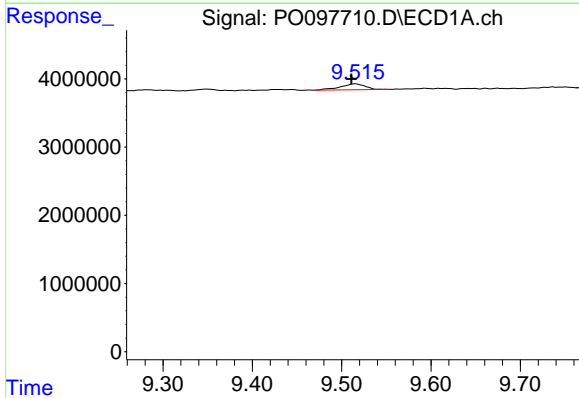
R.T.: 9.079 min  
 Delta R.T.: 0.007 min  
 Response: 477690  
 Conc: 2.12 ng/ml

Instrument :  
 ECD\_O  
 ClientSampleId :  
 RT2683



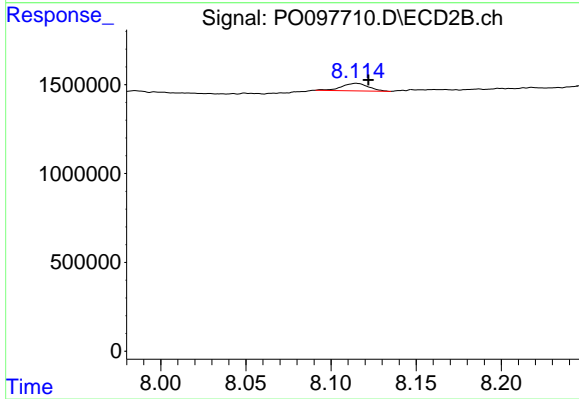
#43 AR-1268-3

R.T.: 7.934 min  
 Delta R.T.: 0.008 min  
 Response: 35542  
 Conc: 1.79 ng/ml



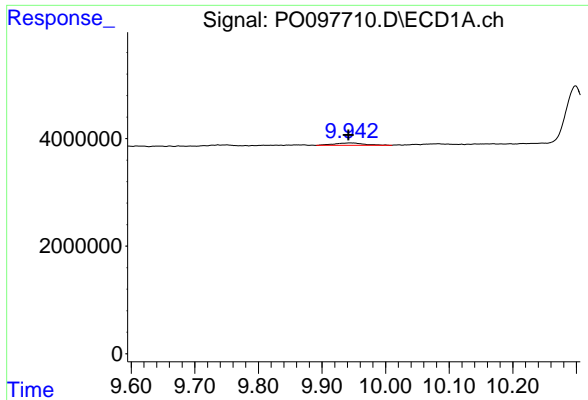
#44 AR-1268-4

R.T.: 9.515 min  
 Delta R.T.: 0.004 min  
 Response: 1708395  
 Conc: 22.20 ng/ml



#44 AR-1268-4

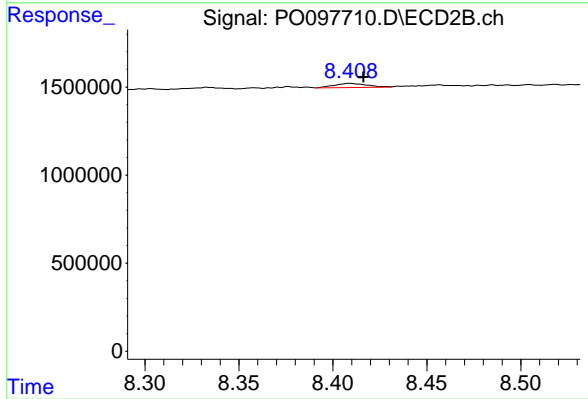
R.T.: 8.115 min  
 Delta R.T.: -0.007 min  
 Response: 467576  
 Conc: 18.09 ng/ml



#45 AR-1268-5

R.T.: 9.944 min  
 Delta R.T.: 0.003 min  
 Response: 1504494  
 Conc: 2.18 ng/ml

Instrument :  
 ECD\_O  
 ClientSampleId :  
 RT2683



#45 AR-1268-5

R.T.: 8.409 min  
 Delta R.T.: -0.007 min  
 Response: 289327  
 Conc: 1.27 ng/ml