

Data Path : Z:\pestpcbsrv\HPCHEM1\ECD_0\Data\P0090523\
 Data File : P0097721.D
 Signal(s) : Signal #1: ECD1A.ch Signal #2: ECD2B.ch
 Acq On : 05 Sep 2023 17:29
 Operator : YP/AJ
 Sample : 04283-08
 Misc :
 ALS Vial : 21 Sample Multiplier: 1

Instrument :
 ECD_0
 ClientSampleId :

Integration File signal 1: autoint1.e
 Integration File signal 2: autoint2.e
 Quant Time: Sep 06 01:44:11 2023
 Quant Method : Z:\pestpcbsrv\HPCHEM1\ECD_0\methods\P0082823.M
 Quant Title : GC EXTRACTABLES
 QLast Update : Tue Aug 29 10:29:21 2023
 Response via : Initial Calibration
 Integrator: ChemStation

Volume Inj. : 2 µl
 Signal #1 Phase : ZB-MR1 Signal #2 Phase: ZB-MR2
 Signal #1 Info : 30Mx0.32mmx 0.50µ Signal #2 Info : 30M x 0.32mm x 0.25µm

Compound	RT#1	RT#2	Resp#1	Resp#2	ng/ml	ng/ml
System Monitoring Compounds						
1) SA Tetrachlo...	4.446	3.626	44404599	10037920	13.304	14.879
2) SA Decachlor...	10.301	8.667	16647363	6550952	9.070	11.412 #
Target Compounds						
3) L1 AR-1016-1	5.627	4.737	78044	77435	0.867	3.557 #
4) L1 AR-1016-2	5.651	4.737	301688	77435	2.174	2.566
5) L1 AR-1016-3	5.704	4.914	80184	72297	0.884	4.476 #
6) L1 AR-1016-4	5.808	4.970	94464	162333	1.362	11.313 #
7) L1 AR-1016-5	6.100	5.182	32460	127162	0.457	6.953 #
8) L2 AR-1221-1	4.657	3.851	269453	99695	6.695	12.178 #
9) L2 AR-1221-2	4.753	3.935	574474	180409	19.111	31.128 #
10) L2 AR-1221-3	4.806	4.005	19121	25952	0.215	1.411 #
11) L3 AR-1232-1	4.806	4.005	19121	25952	0.259	1.723 #
12) L3 AR-1232-2	5.368	4.737	61923	77435	1.616	5.547 #
13) L3 AR-1232-3	5.651	4.914	301688	72297	4.665	10.294 #
14) L3 AR-1232-4	5.808	5.007	94464	149017	2.966	21.076 #
15) L3 AR-1232-5	5.905	5.182	324858	127162	11.040	16.155 #
16) L4 AR-1242-1	5.627	4.737	78044	77435	0.964	4.014 #
17) L4 AR-1242-2	5.651	4.737	301688	77435	2.416	2.845
18) L4 AR-1242-3	5.704	4.914	80184	72297	0.975	5.038 #
19) L4 AR-1242-4	5.808	5.007	94464	149017	1.505	9.409 #
20) L4 AR-1242-5	6.574	5.521	988905	102156	15.723	5.788 #
21) L5 AR-1248-1	5.627	4.737	78044	77435	1.323	5.635 #
22) L5 AR-1248-2	5.905	4.970	324858	162333	3.285	7.321 #
23) L5 AR-1248-3	6.100	5.007	32460	149017	0.313	6.481 #
24) L5 AR-1248-4	6.513	5.182	37508	127162	0.410	4.686 #
25) L5 AR-1248-5	6.574	5.569	988905	127458	9.741	5.638 #
26) L6 AR-1254-1	6.492	5.521	140076	102156	1.274	2.647 #
27) L6 AR-1254-2	6.707	5.677	174191	97658	1.069	2.867 #
28) L6 AR-1254-3	7.081	6.061	695976	78539	4.274	1.480 #
29) L6 AR-1254-4	7.390	6.326	313171	101829	3.213	3.734
30) L6 AR-1254-5	7.786	6.725	506056	151008	4.481	3.425
31) L7 AR-1260-1	7.244	6.220	183129	33681	1.435	0.902 #
32) L7 AR-1260-2	7.497	6.405	668920	66283	4.909	1.566 #
33) L7 AR-1260-3	7.873	6.557	178680	144043	1.690	3.441 #
34) L7 AR-1260-4	8.076	7.023	1267452	198046	11.204	6.123 #
35) L7 AR-1260-5	8.422	7.283	272669	37325	1.451	0.565 #
36) L8 AR-1262-1	7.873	6.812	178680	149450	1.187	7.447 #
37) L8 AR-1262-2	8.422	7.023	272669	198046	1.245	4.533 #
38) L8 AR-1262-3	8.747	7.551	254883	319672	1.644	10.257 #
39) L8 AR-1262-4	8.842	7.619	735067	241928	5.897	4.301 #
40) L8 AR-1262-5	9.503	8.115	162219	22953	2.359	0.976 #
41) L9 AR-1268-1	8.747	7.551	254883	319672	0.897	3.340 #

Data Path : Z:\pestpcbsrv\HPCHEM1\ECD_0\Data\P0090523\
 Data File : P0097721.D
 Signal(s) : Signal #1: ECD1A.ch Signal #2: ECD2B.ch
 Acq On : 05 Sep 2023 17:29
 Operator : YP/AJ
 Sample : 04283-08
 Misc :
 ALS Vial : 21 Sample Multiplier: 1

Instrument :
 ECD_0
 ClientSampleId :

Integration File signal 1: autoint1.e
 Integration File signal 2: autoint2.e
 Quant Time: Sep 06 01:44:11 2023
 Quant Method : Z:\pestpcbsrv\HPCHEM1\ECD_0\methods\P0082823.M
 Quant Title : GC EXTRACTABLES
 QLast Update : Tue Aug 29 10:29:21 2023
 Response via : Initial Calibration
 Integrator: ChemStation

Volume Inj. : 2 µl
 Signal #1 Phase : ZB-MR1 Signal #2 Phase: ZB-MR2
 Signal #1 Info : 30Mx0.32mmx 0.50µ Signal #2 Info : 30M x 0.32mm x 0.25µm

	Compound	RT#1	RT#2	Resp#1	Resp#2	ng/ml	ng/ml
42)	L9 AR-1268-2	8.842	7.619	735067	241928	2.893	2.918
43)	L9 AR-1268-3	9.073	7.935	117832	27392	0.522	1.382 #
44)	L9 AR-1268-4	9.518	8.115	87030	22953	1.131	0.888
45)	L9 AR-1268-5	9.940	8.410	435366	329799	0.630	1.447 #

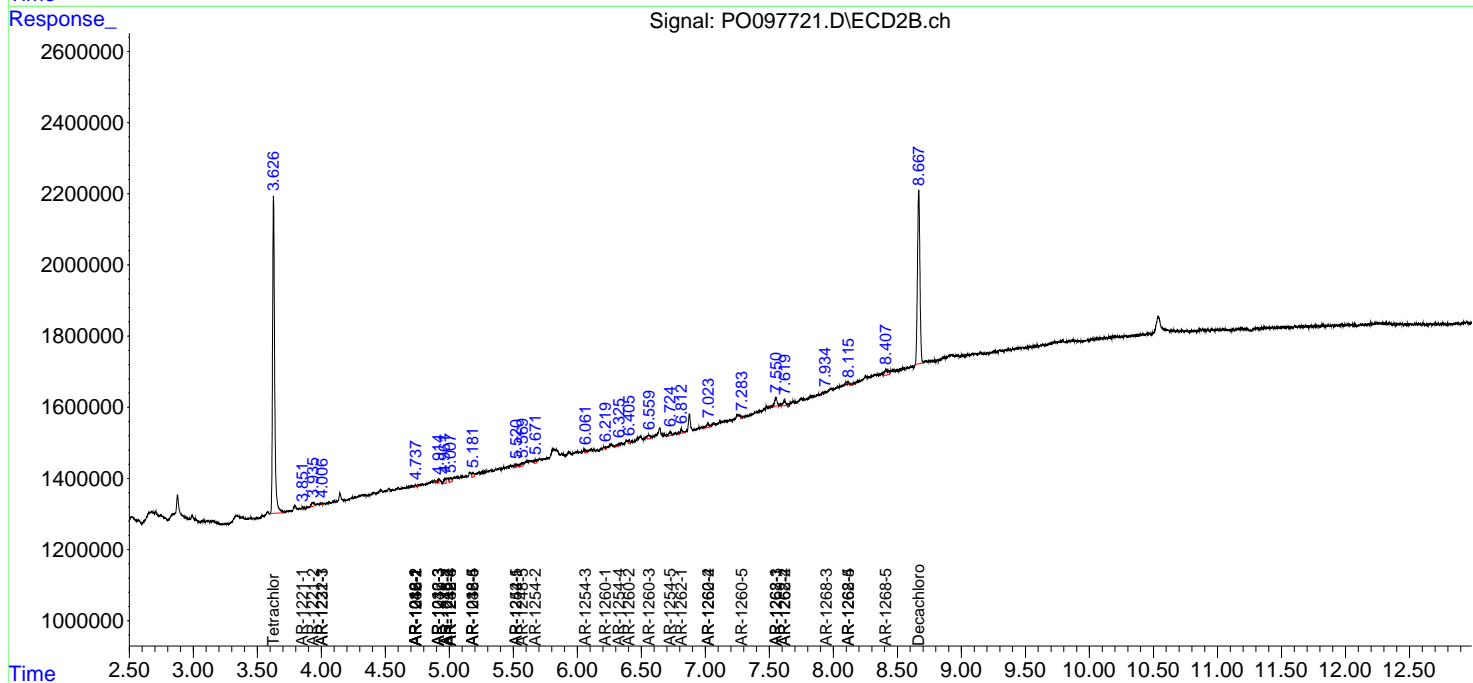
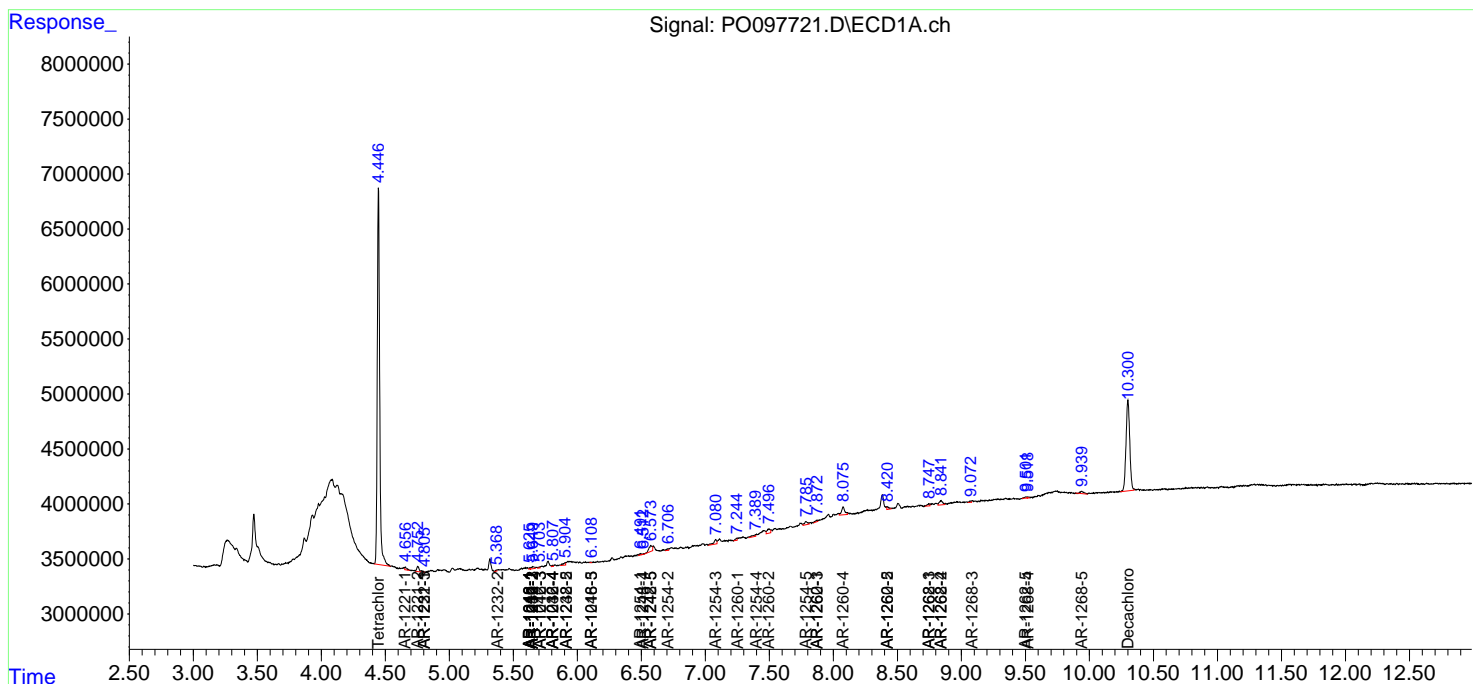
(f)=RT Delta > 1/2 Window (#)=Amounts differ by > 25% (m)=manual int.

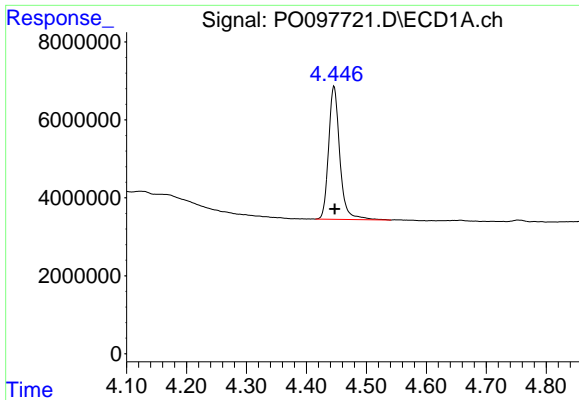
Data Path : Z:\pestpcbsrv\HPCHEM1\ECD_O\Data\PO090523\
 Data File : PO097721.D
 Signal(s) : Signal #1: ECD1A.ch Signal #2: ECD2B.ch
 Acq On : 05 Sep 2023 17:29
 Operator : YP/AJ
 Sample : 04283-08
 Misc :
 ALS Vial : 21 Sample Multiplier: 1

Instrument :
 ECD_O
 ClientSampleId :

Integration File signal 1: autoint1.e
 Integration File signal 2: autoint2.e
 Quant Time: Sep 06 01:44:11 2023
 Quant Method : Z:\pestpcbsrv\HPCHEM1\ECD_O\methods\PO082823.M
 Quant Title : GC EXTRACTABLES
 QLast Update : Tue Aug 29 10:29:21 2023
 Response via : Initial Calibration
 Integrator: ChemStation

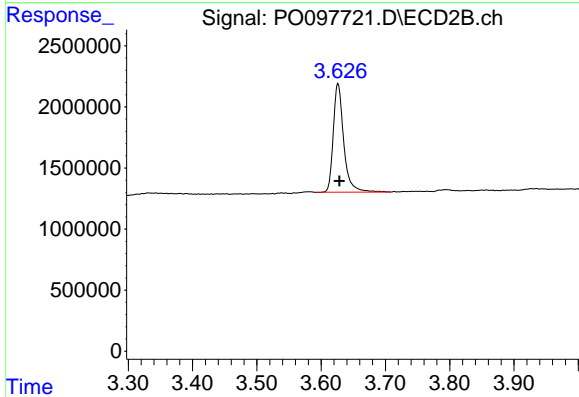
Volume Inj. : 2 µl
 Signal #1 Phase : ZB-MR1 Signal #2 Phase: ZB-MR2
 Signal #1 Info : 30Mx0.32mmx 0.50µ Signal #2 Info : 30M x 0.32mm x 0.25µm



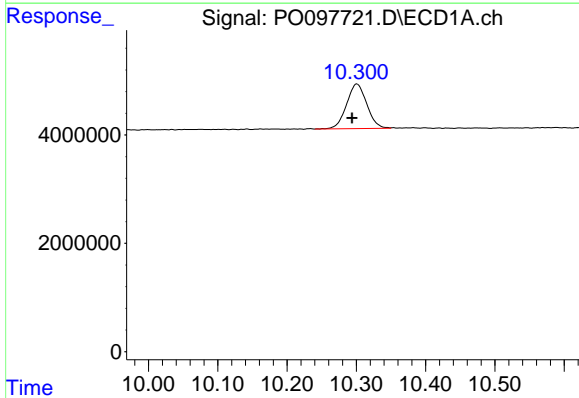


#1 Tetrachloro-m-xylene
 R.T.: 4.446 min
 Delta R.T.: 0.000 min
 Response: 44404599
 Conc: 13.30 ng/ml

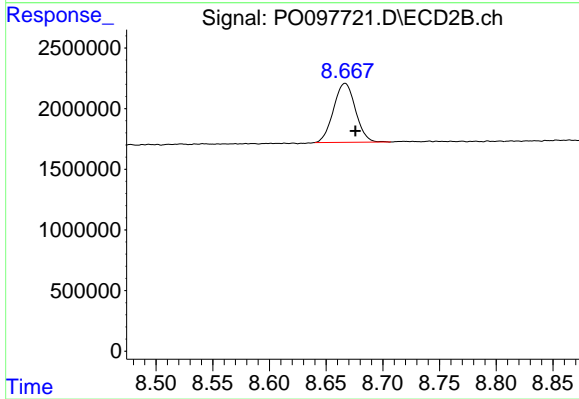
Instrument :
 ECD_O
 ClientSampleId :



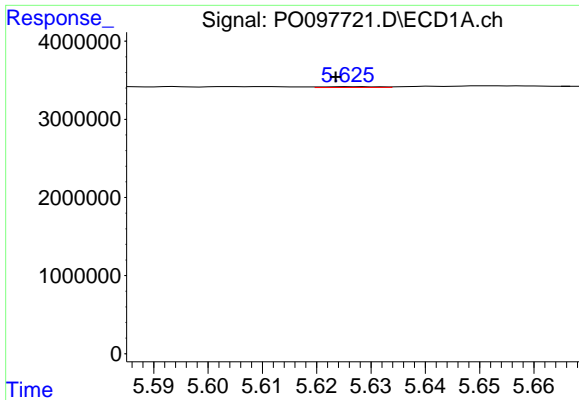
#1 Tetrachloro-m-xylene
 R.T.: 3.626 min
 Delta R.T.: -0.002 min
 Response: 10037920
 Conc: 14.88 ng/ml



#2 Decachlorobiphenyl
 R.T.: 10.301 min
 Delta R.T.: 0.007 min
 Response: 16647363
 Conc: 9.07 ng/ml



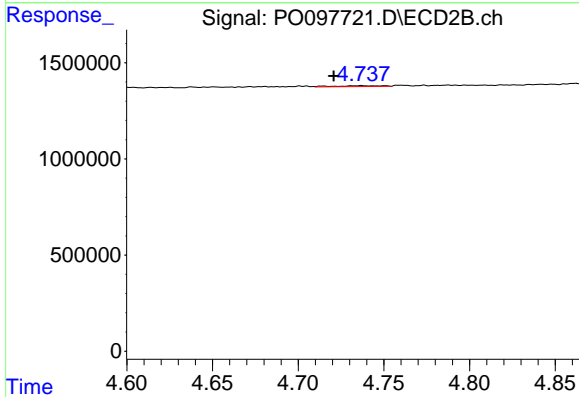
#2 Decachlorobiphenyl
 R.T.: 8.667 min
 Delta R.T.: -0.009 min
 Response: 6550952
 Conc: 11.41 ng/ml



#3 AR-1016-1

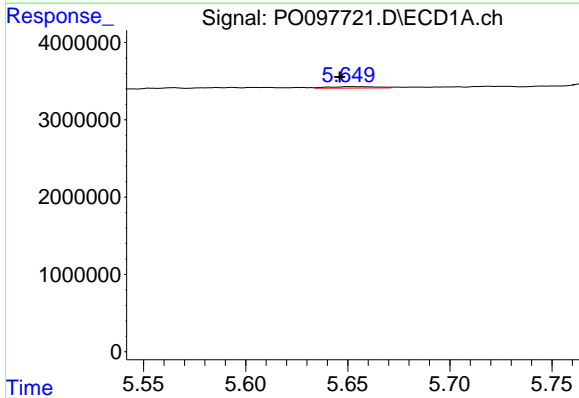
R.T.: 5.627 min
 Delta R.T.: 0.003 min
 Response: 78044
 Conc: 0.87 ng/ml

Instrument :
 ECD_O
 ClientSampleId :



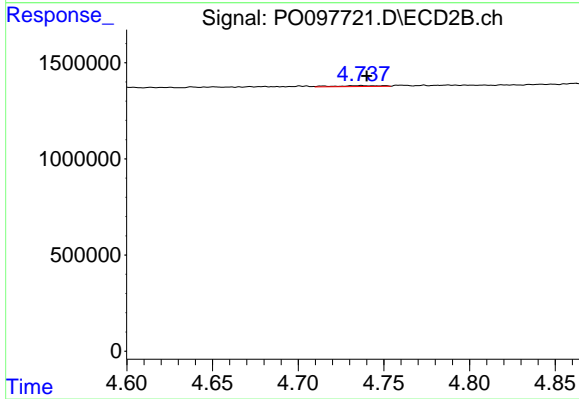
#3 AR-1016-1

R.T.: 4.737 min
 Delta R.T.: 0.016 min
 Response: 77435
 Conc: 3.56 ng/ml



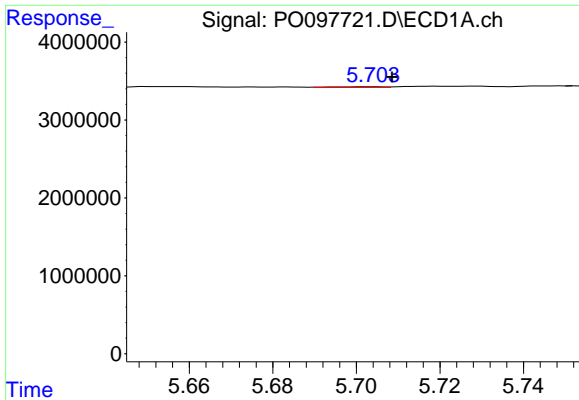
#4 AR-1016-2

R.T.: 5.651 min
 Delta R.T.: 0.005 min
 Response: 301688
 Conc: 2.17 ng/ml



#4 AR-1016-2

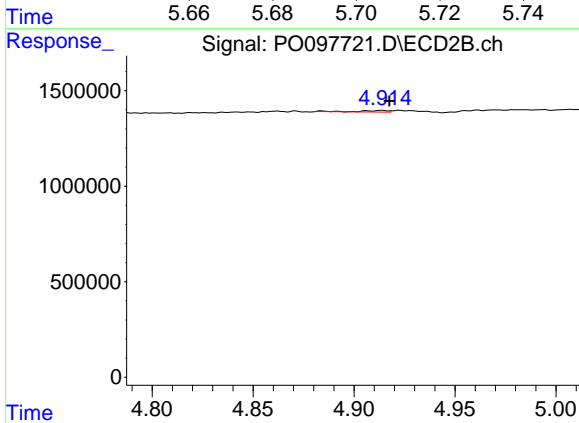
R.T.: 4.737 min
 Delta R.T.: -0.003 min
 Response: 77435
 Conc: 2.57 ng/ml



#5 AR-1016-3

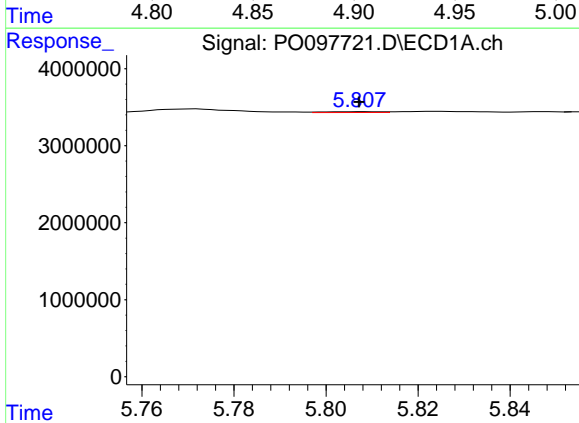
R.T.: 5.704 min
 Delta R.T.: -0.004 min
 Response: 80184
 Conc: 0.88 ng/ml

Instrument :
 ECD_O
 ClientSampleId :



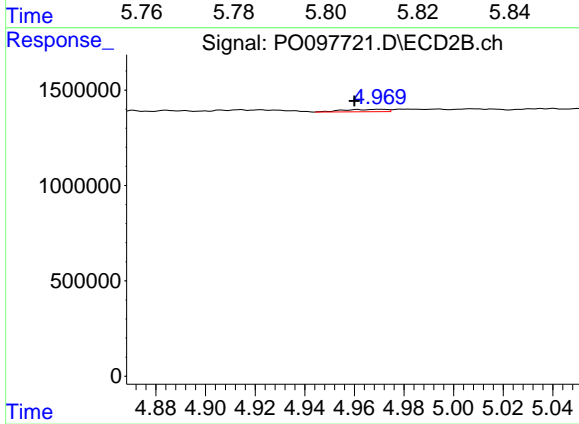
#5 AR-1016-3

R.T.: 4.914 min
 Delta R.T.: -0.004 min
 Response: 72297
 Conc: 4.48 ng/ml



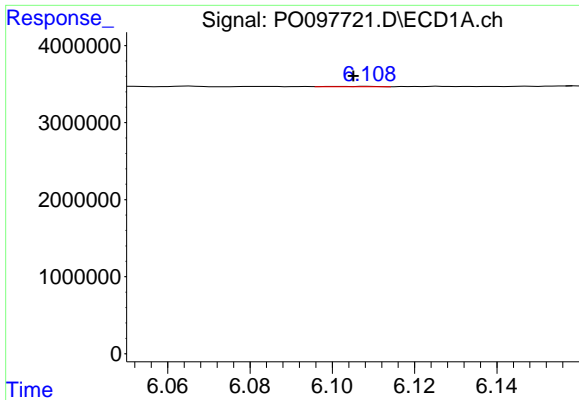
#6 AR-1016-4

R.T.: 5.808 min
 Delta R.T.: 0.000 min
 Response: 94464
 Conc: 1.36 ng/ml



#6 AR-1016-4

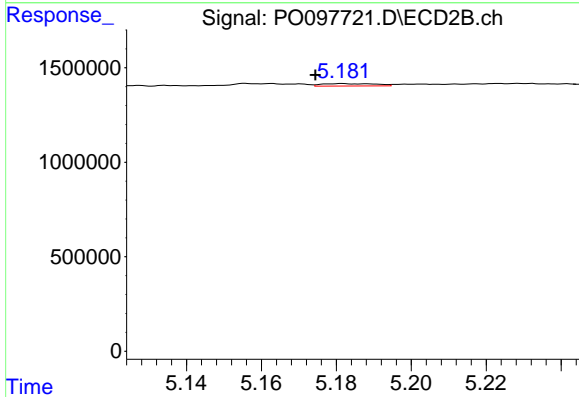
R.T.: 4.970 min
 Delta R.T.: 0.010 min
 Response: 162333
 Conc: 11.31 ng/ml



#7 AR-1016-5

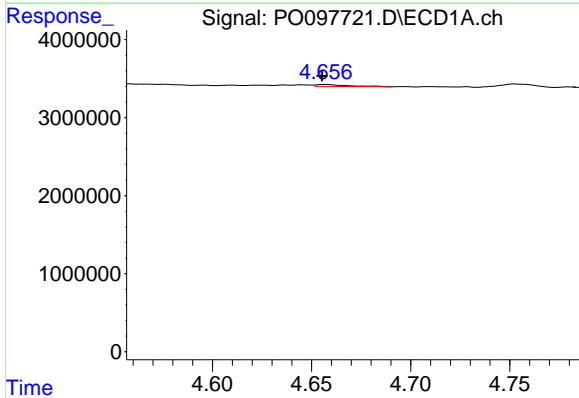
R.T.: 6.100 min
 Delta R.T.: -0.005 min
 Response: 32460
 Conc: 0.46 ng/ml

Instrument :
 ECD_O
 ClientSampleId :



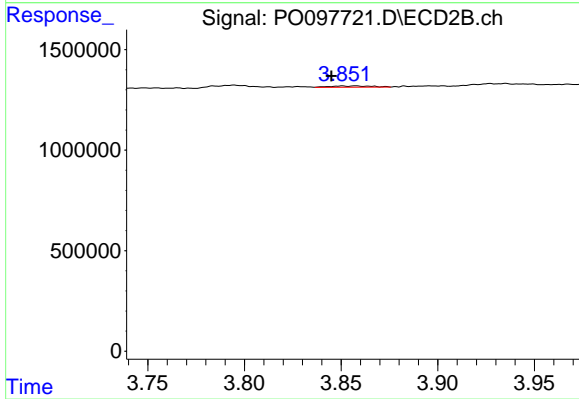
#7 AR-1016-5

R.T.: 5.182 min
 Delta R.T.: 0.007 min
 Response: 127162
 Conc: 6.95 ng/ml



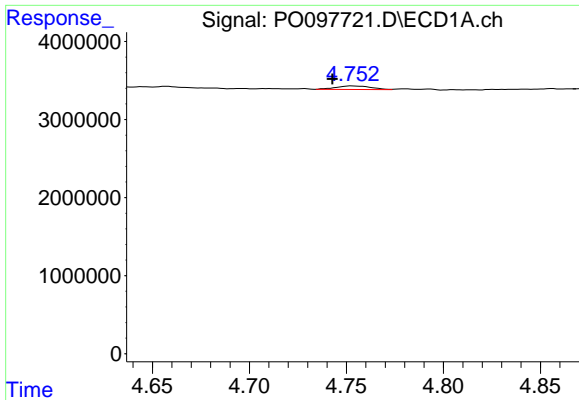
#8 AR-1221-1

R.T.: 4.657 min
 Delta R.T.: 0.002 min
 Response: 269453
 Conc: 6.70 ng/ml



#8 AR-1221-1

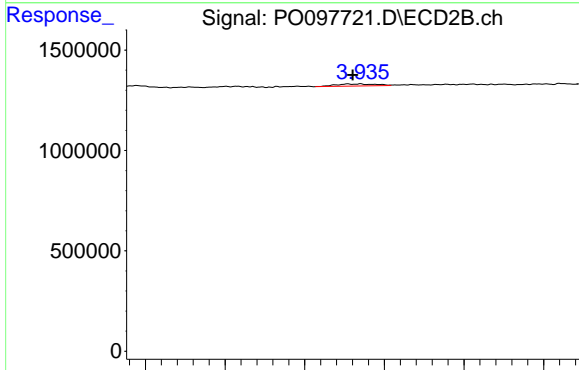
R.T.: 3.851 min
 Delta R.T.: 0.006 min
 Response: 99695
 Conc: 12.18 ng/ml



#9 AR-1221-2

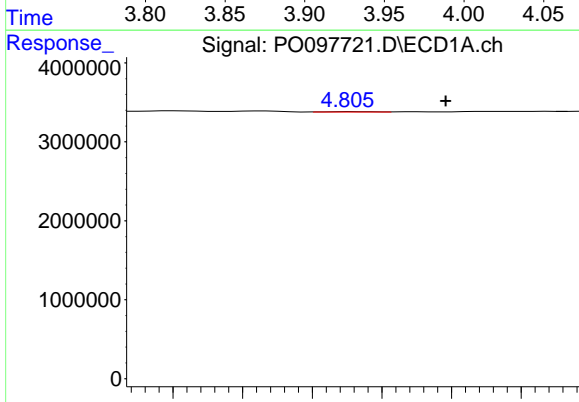
R.T.: 4.753 min
 Delta R.T.: 0.010 min
 Response: 574474
 Conc: 19.11 ng/ml

Instrument :
 ECD_O
 ClientSampleId :



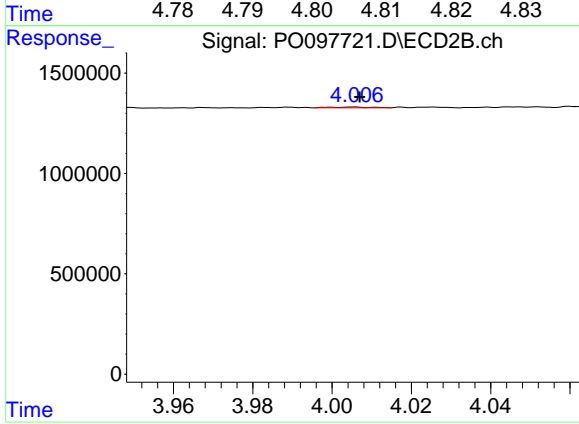
#9 AR-1221-2

R.T.: 3.935 min
 Delta R.T.: 0.005 min
 Response: 180409
 Conc: 31.13 ng/ml



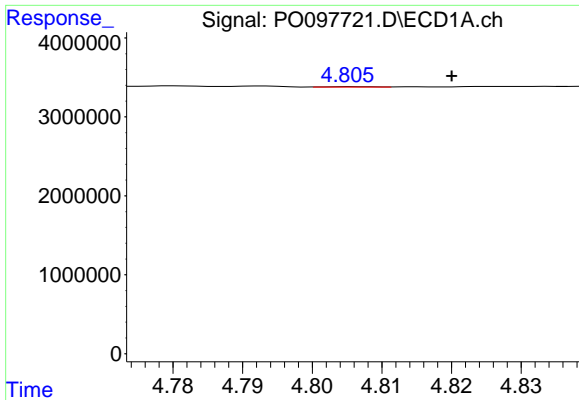
#10 AR-1221-3

R.T.: 4.806 min
 Delta R.T.: -0.014 min
 Response: 19121
 Conc: 0.21 ng/ml



#10 AR-1221-3

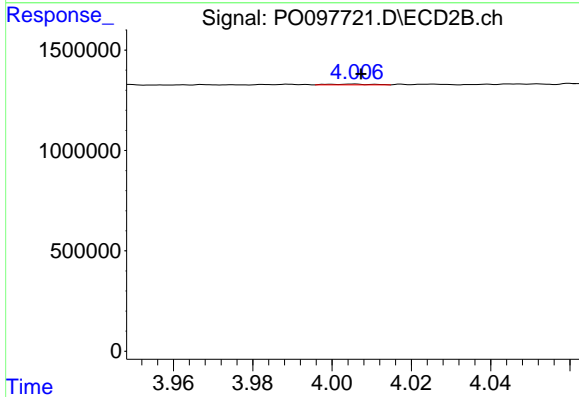
R.T.: 4.005 min
 Delta R.T.: -0.002 min
 Response: 25952
 Conc: 1.41 ng/ml



#11 AR-1232-1

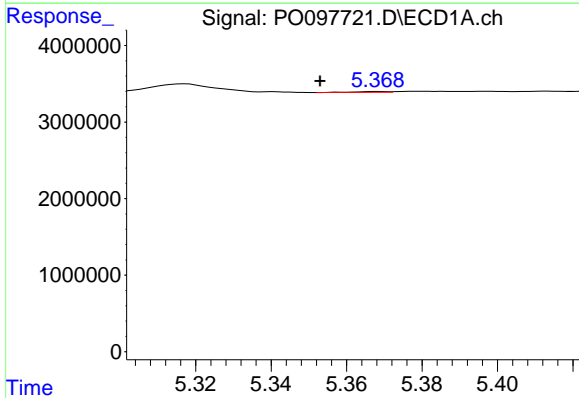
R.T.: 4.806 min
 Delta R.T.: -0.014 min
 Response: 19121
 Conc: 0.26 ng/ml

Instrument :
 ECD_O
 ClientSampleId :



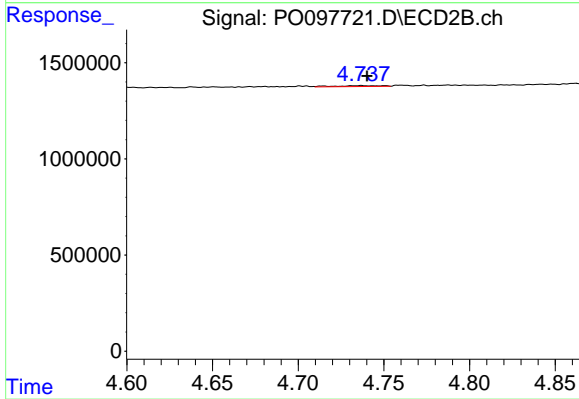
#11 AR-1232-1

R.T.: 4.005 min
 Delta R.T.: -0.002 min
 Response: 25952
 Conc: 1.72 ng/ml



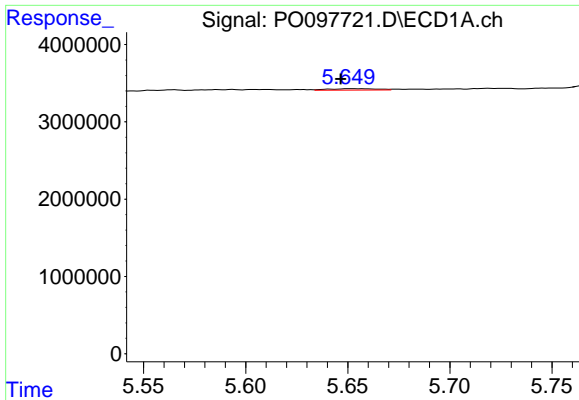
#12 AR-1232-2

R.T.: 5.368 min
 Delta R.T.: 0.015 min
 Response: 61923
 Conc: 1.62 ng/ml



#12 AR-1232-2

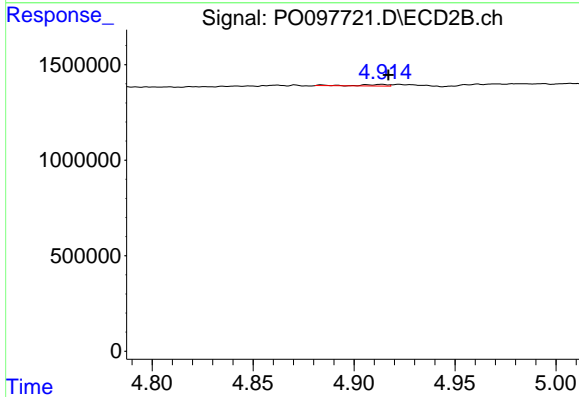
R.T.: 4.737 min
 Delta R.T.: -0.003 min
 Response: 77435
 Conc: 5.55 ng/ml



#13 AR-1232-3

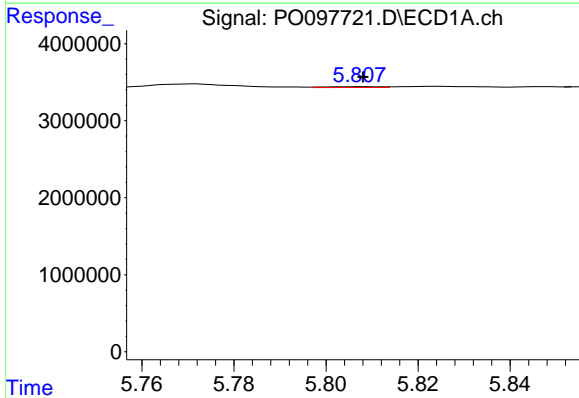
R.T.: 5.651 min
 Delta R.T.: 0.005 min
 Response: 301688
 Conc: 4.66 ng/ml

Instrument :
 ECD_O
 ClientSampleId :



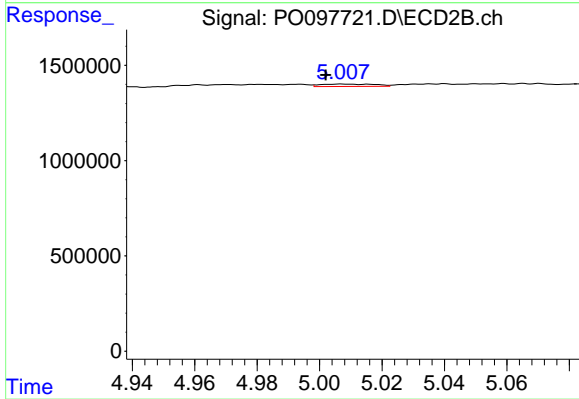
#13 AR-1232-3

R.T.: 4.914 min
 Delta R.T.: -0.003 min
 Response: 72297
 Conc: 10.29 ng/ml



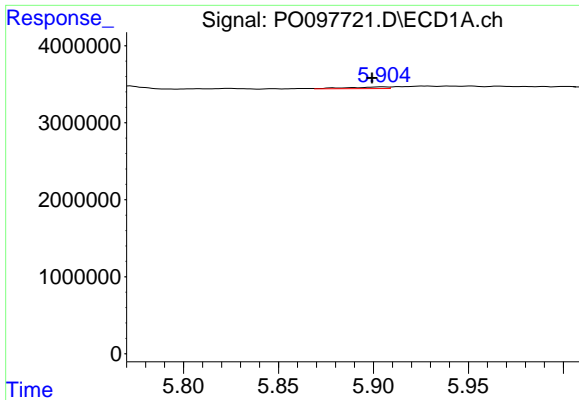
#14 AR-1232-4

R.T.: 5.808 min
 Delta R.T.: 0.000 min
 Response: 94464
 Conc: 2.97 ng/ml



#14 AR-1232-4

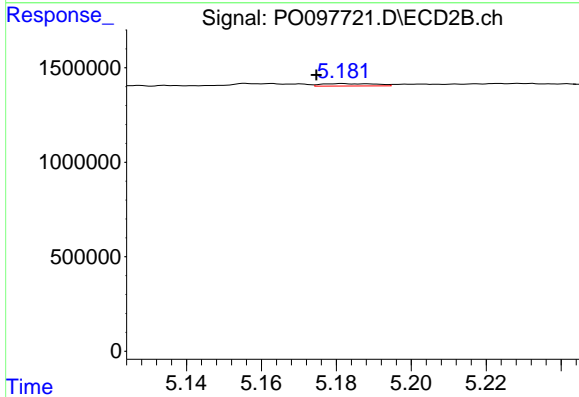
R.T.: 5.007 min
 Delta R.T.: 0.005 min
 Response: 149017
 Conc: 21.08 ng/ml



#15 AR-1232-5

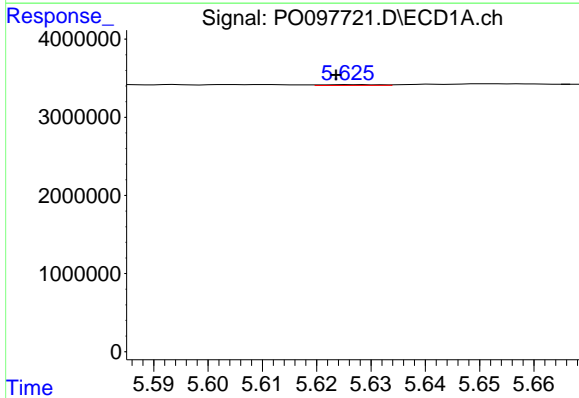
R.T.: 5.905 min
 Delta R.T.: 0.006 min
 Response: 324858
 Conc: 11.04 ng/ml

Instrument :
 ECD_O
 ClientSampleId :



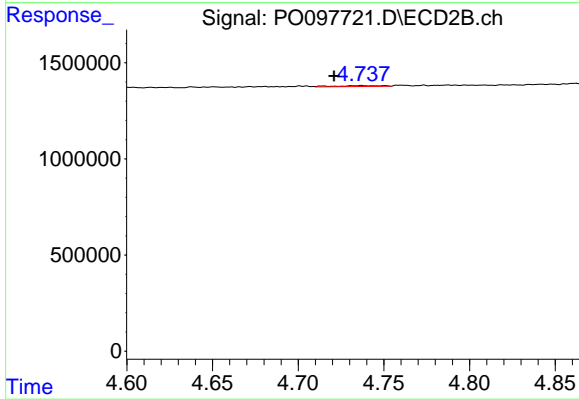
#15 AR-1232-5

R.T.: 5.182 min
 Delta R.T.: 0.007 min
 Response: 127162
 Conc: 16.16 ng/ml



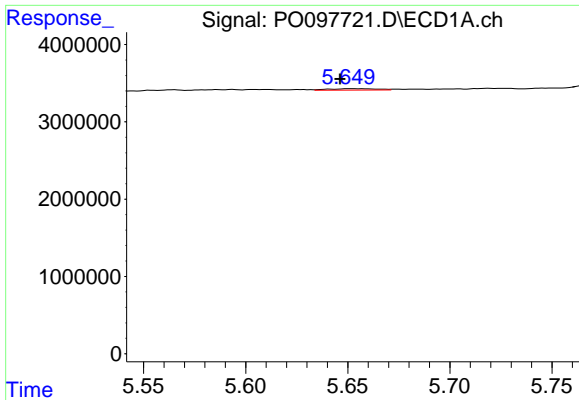
#16 AR-1242-1

R.T.: 5.627 min
 Delta R.T.: 0.003 min
 Response: 78044
 Conc: 0.96 ng/ml



#16 AR-1242-1

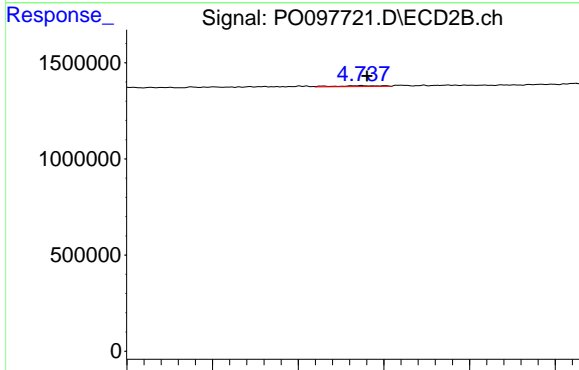
R.T.: 4.737 min
 Delta R.T.: 0.016 min
 Response: 77435
 Conc: 4.01 ng/ml



#17 AR-1242-2

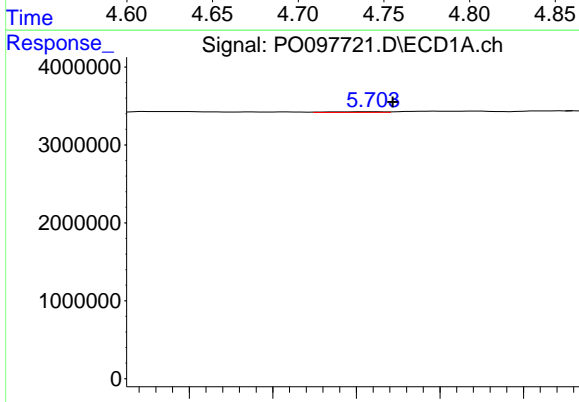
R.T.: 5.651 min
 Delta R.T.: 0.005 min
 Response: 301688
 Conc: 2.42 ng/ml

Instrument :
 ECD_O
 ClientSampleId :



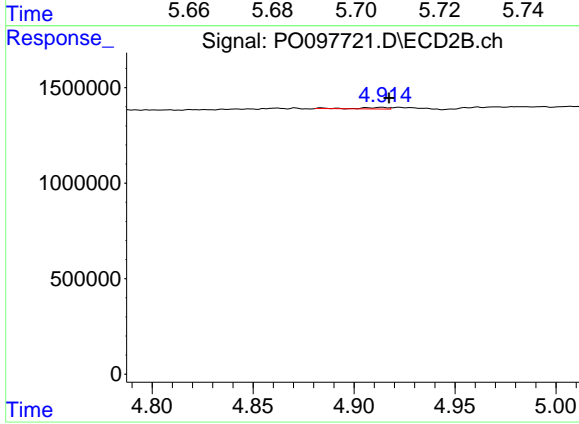
#17 AR-1242-2

R.T.: 4.737 min
 Delta R.T.: -0.003 min
 Response: 77435
 Conc: 2.84 ng/ml



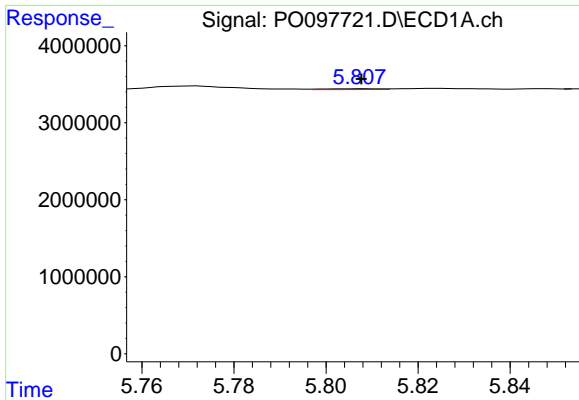
#18 AR-1242-3

R.T.: 5.704 min
 Delta R.T.: -0.005 min
 Response: 80184
 Conc: 0.98 ng/ml



#18 AR-1242-3

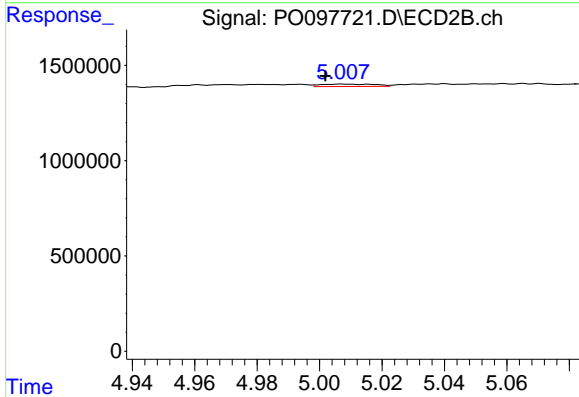
R.T.: 4.914 min
 Delta R.T.: -0.004 min
 Response: 72297
 Conc: 5.04 ng/ml



#19 AR-1242-4

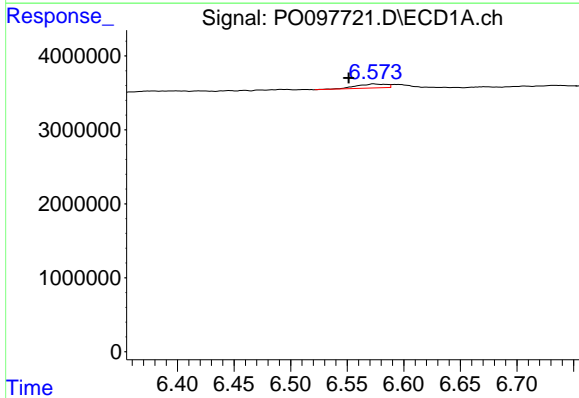
R.T.: 5.808 min
 Delta R.T.: 0.000 min
 Response: 94464
 Conc: 1.50 ng/ml

Instrument :
 ECD_O
 ClientSampleId :



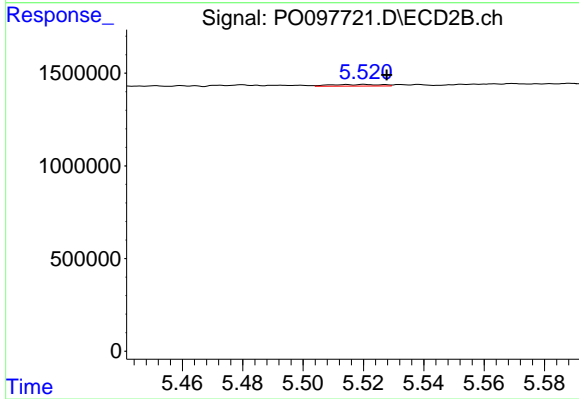
#19 AR-1242-4

R.T.: 5.007 min
 Delta R.T.: 0.005 min
 Response: 149017
 Conc: 9.41 ng/ml



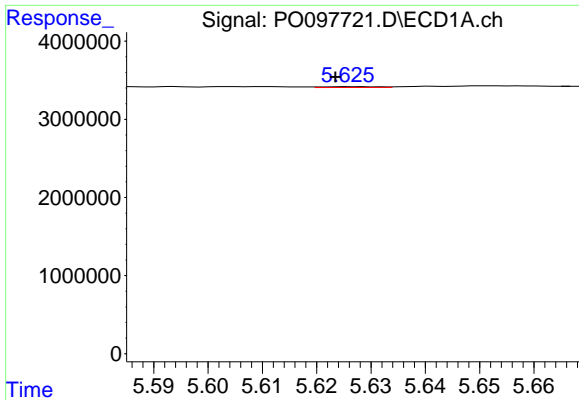
#20 AR-1242-5

R.T.: 6.574 min
 Delta R.T.: 0.022 min
 Response: 988905
 Conc: 15.72 ng/ml



#20 AR-1242-5

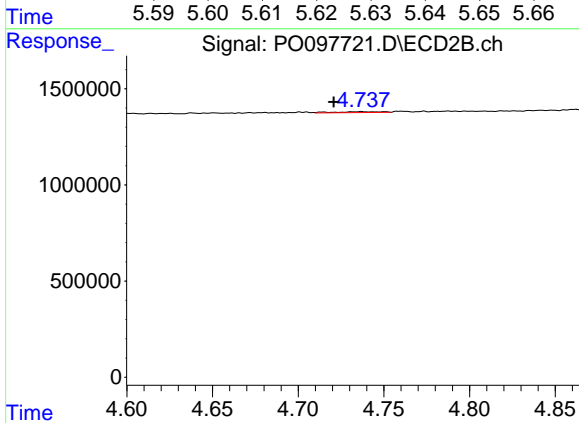
R.T.: 5.521 min
 Delta R.T.: -0.007 min
 Response: 102156
 Conc: 5.79 ng/ml



#21 AR-1248-1

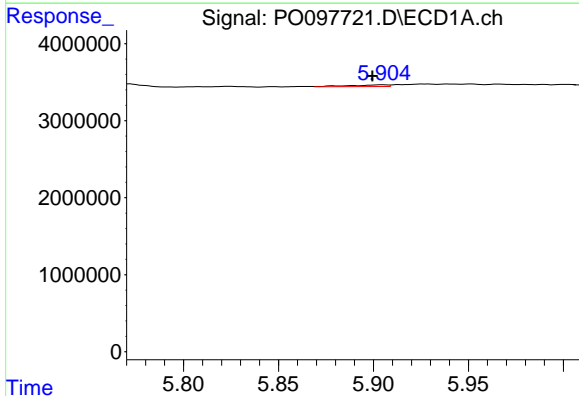
R.T.: 5.627 min
 Delta R.T.: 0.003 min
 Response: 78044
 Conc: 1.32 ng/ml

Instrument :
 ECD_O
 ClientSampleId :



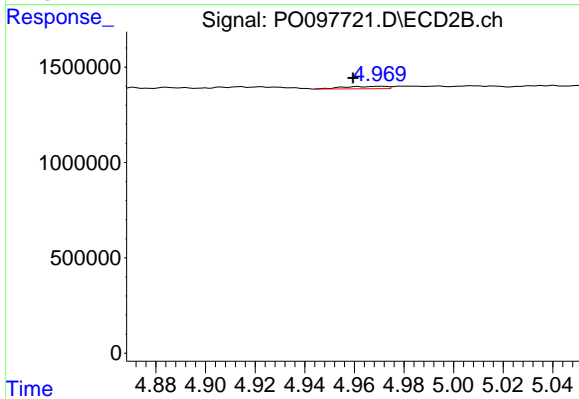
#21 AR-1248-1

R.T.: 4.737 min
 Delta R.T.: 0.016 min
 Response: 77435
 Conc: 5.64 ng/ml



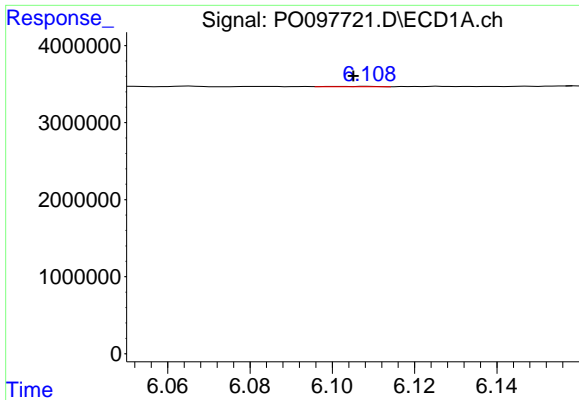
#22 AR-1248-2

R.T.: 5.905 min
 Delta R.T.: 0.005 min
 Response: 324858
 Conc: 3.28 ng/ml



#22 AR-1248-2

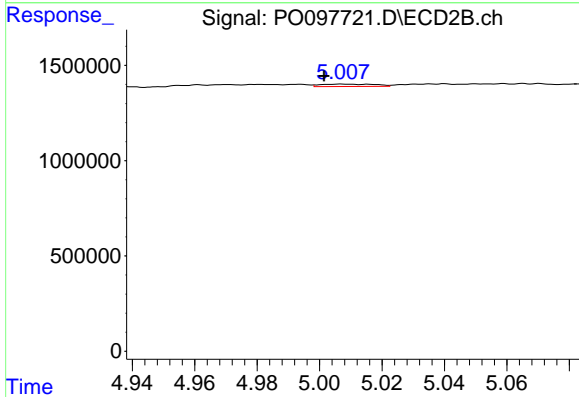
R.T.: 4.970 min
 Delta R.T.: 0.011 min
 Response: 162333
 Conc: 7.32 ng/ml



#23 AR-1248-3

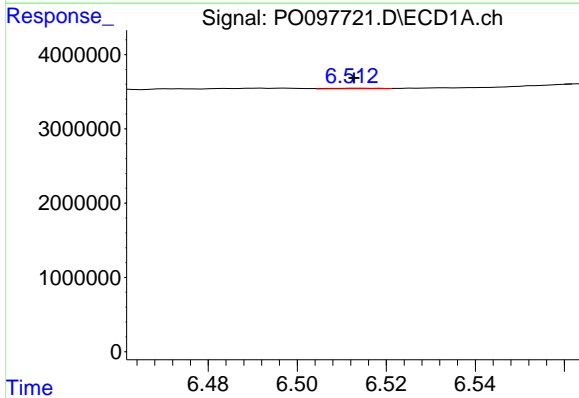
R.T.: 6.100 min
 Delta R.T.: -0.005 min
 Response: 32460
 Conc: 0.31 ng/ml

Instrument :
 ECD_O
 ClientSampleId :



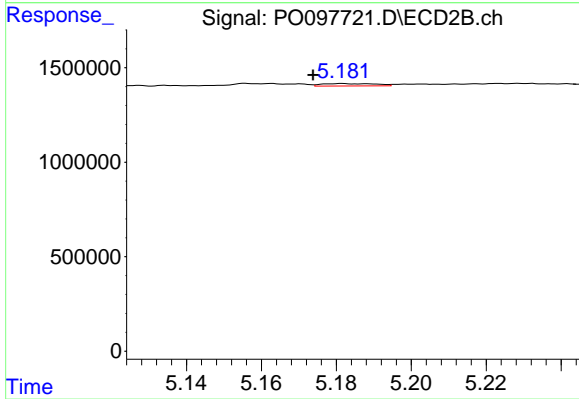
#23 AR-1248-3

R.T.: 5.007 min
 Delta R.T.: 0.006 min
 Response: 149017
 Conc: 6.48 ng/ml



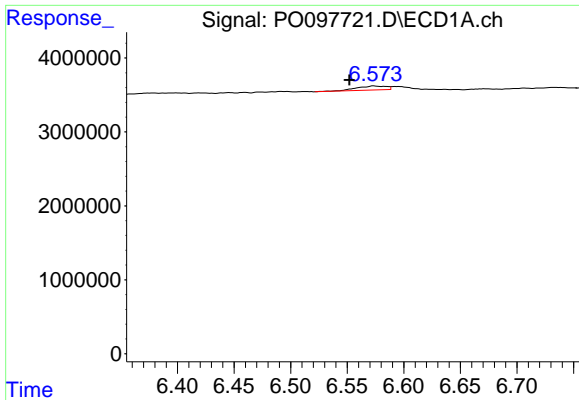
#24 AR-1248-4

R.T.: 6.513 min
 Delta R.T.: 0.000 min
 Response: 37508
 Conc: 0.41 ng/ml



#24 AR-1248-4

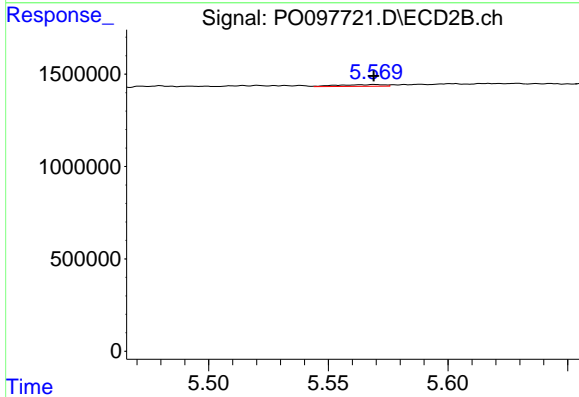
R.T.: 5.182 min
 Delta R.T.: 0.008 min
 Response: 127162
 Conc: 4.69 ng/ml



#25 AR-1248-5

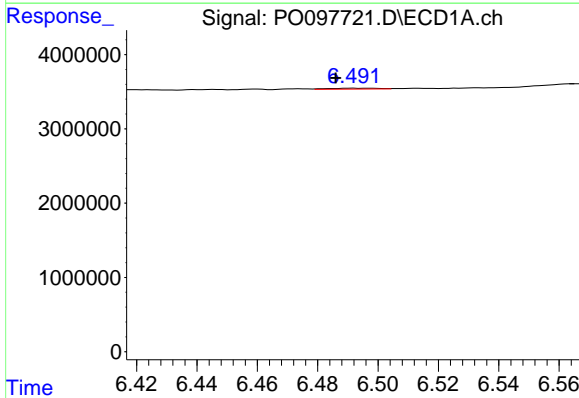
R.T.: 6.574 min
 Delta R.T.: 0.022 min
 Response: 988905
 Conc: 9.74 ng/ml

Instrument :
 ECD_O
 ClientSampleId :



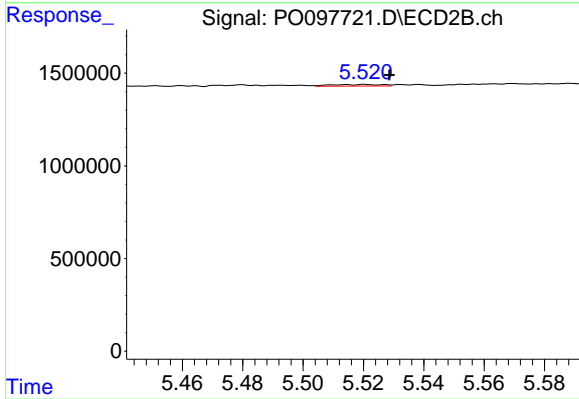
#25 AR-1248-5

R.T.: 5.569 min
 Delta R.T.: 0.000 min
 Response: 127458
 Conc: 5.64 ng/ml



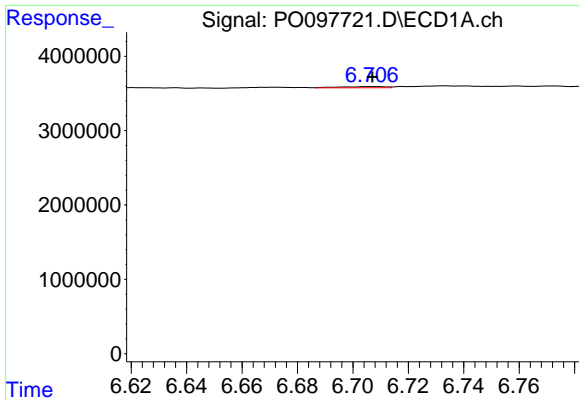
#26 AR-1254-1

R.T.: 6.492 min
 Delta R.T.: 0.006 min
 Response: 140076
 Conc: 1.27 ng/ml



#26 AR-1254-1

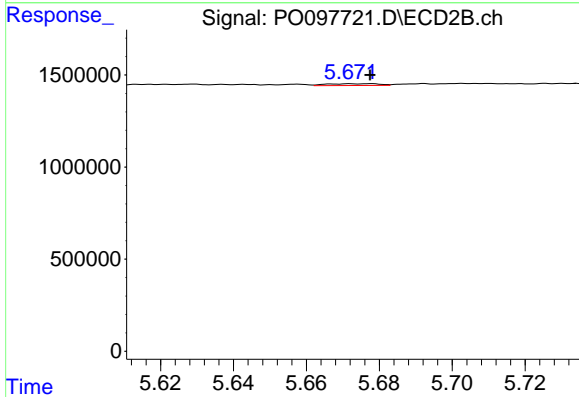
R.T.: 5.521 min
 Delta R.T.: -0.008 min
 Response: 102156
 Conc: 2.65 ng/ml



#27 AR-1254-2

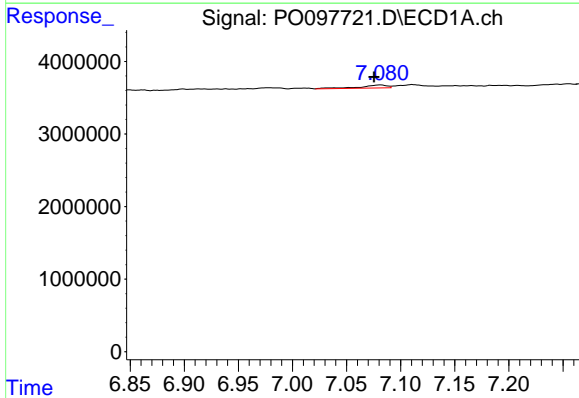
R.T.: 6.707 min
 Delta R.T.: 0.000 min
 Response: 174191
 Conc: 1.07 ng/ml

Instrument :
 ECD_O
 ClientSampleId :



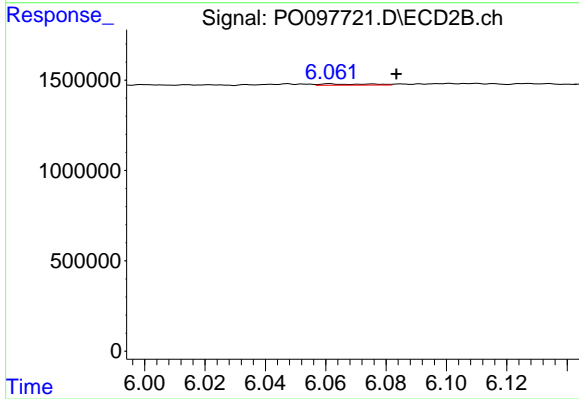
#27 AR-1254-2

R.T.: 5.677 min
 Delta R.T.: 0.000 min
 Response: 97658
 Conc: 2.87 ng/ml



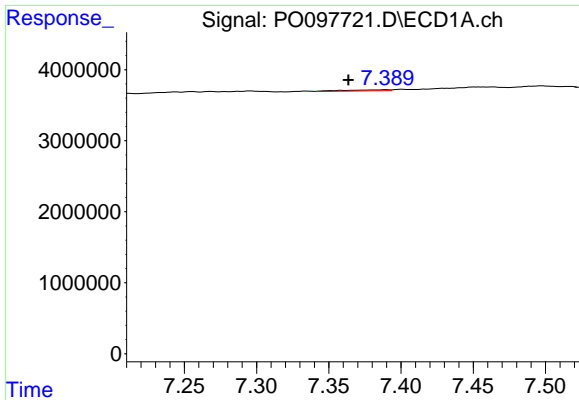
#28 AR-1254-3

R.T.: 7.081 min
 Delta R.T.: 0.006 min
 Response: 695976
 Conc: 4.27 ng/ml



#28 AR-1254-3

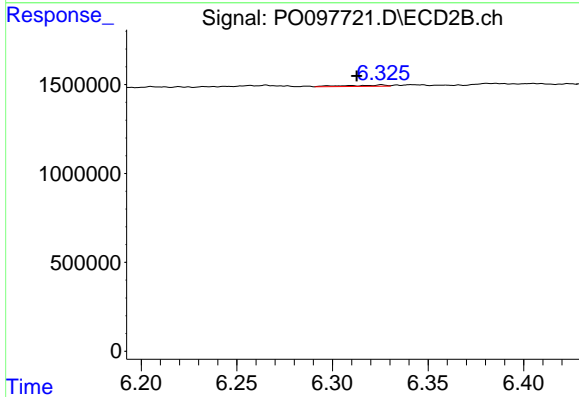
R.T.: 6.061 min
 Delta R.T.: -0.022 min
 Response: 78539
 Conc: 1.48 ng/ml



#29 AR-1254-4

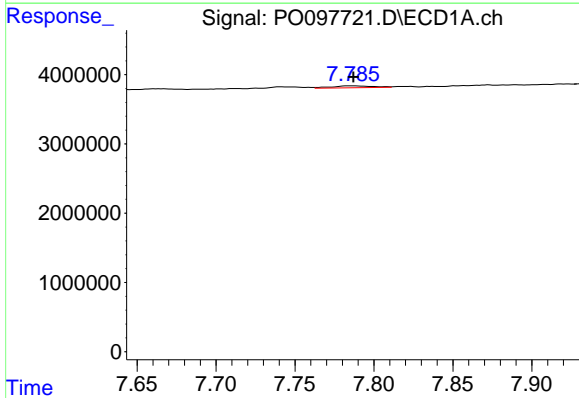
R.T.: 7.390 min
 Delta R.T.: 0.026 min
 Response: 313171
 Conc: 3.21 ng/ml

Instrument :
 ECD_O
 ClientSampleId :



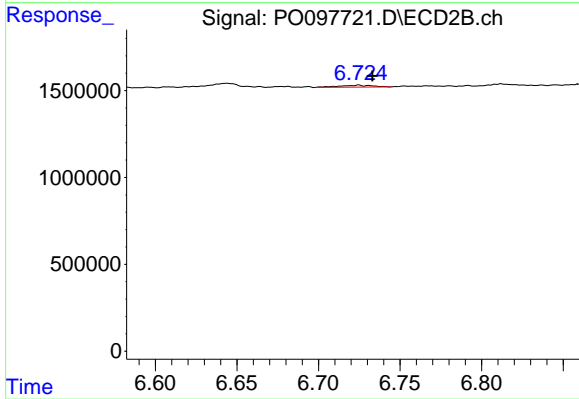
#29 AR-1254-4

R.T.: 6.326 min
 Delta R.T.: 0.013 min
 Response: 101829
 Conc: 3.73 ng/ml



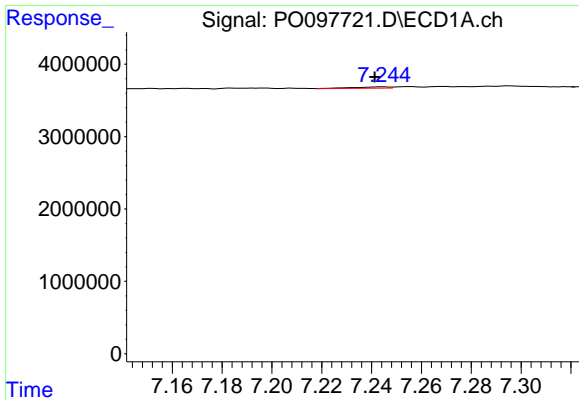
#30 AR-1254-5

R.T.: 7.786 min
 Delta R.T.: 0.000 min
 Response: 506056
 Conc: 4.48 ng/ml



#30 AR-1254-5

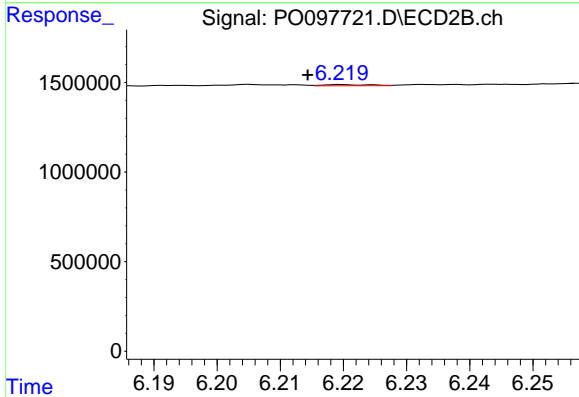
R.T.: 6.725 min
 Delta R.T.: -0.008 min
 Response: 151008
 Conc: 3.43 ng/ml



#31 AR-1260-1

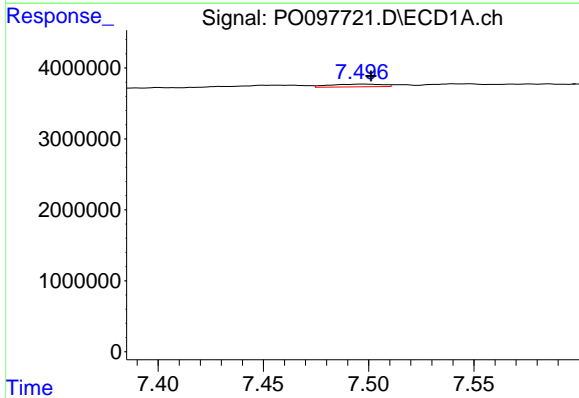
R.T.: 7.244 min
 Delta R.T.: 0.003 min
 Response: 183129
 Conc: 1.43 ng/ml

Instrument :
 ECD_O
 ClientSampleId :



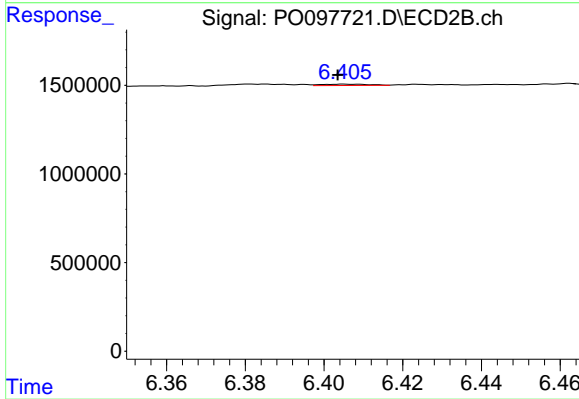
#31 AR-1260-1

R.T.: 6.220 min
 Delta R.T.: 0.005 min
 Response: 33681
 Conc: 0.90 ng/ml



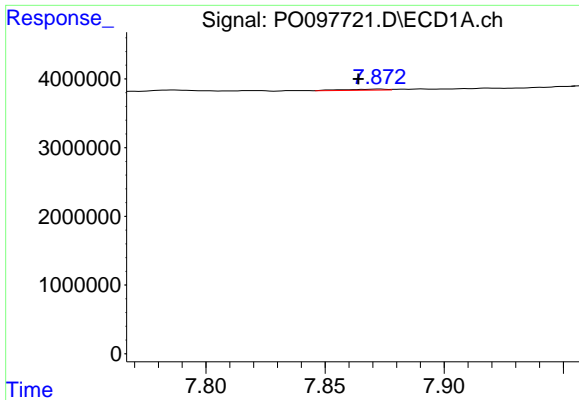
#32 AR-1260-2

R.T.: 7.497 min
 Delta R.T.: -0.004 min
 Response: 668920
 Conc: 4.91 ng/ml



#32 AR-1260-2

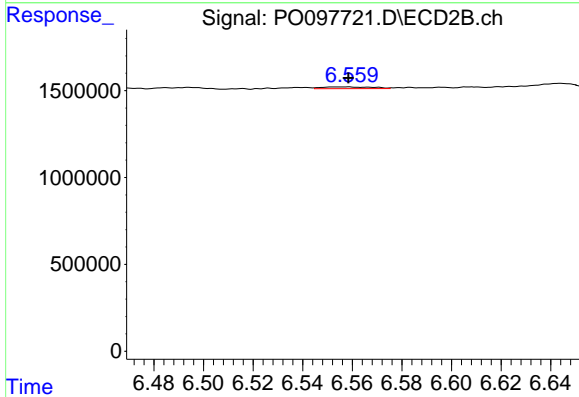
R.T.: 6.405 min
 Delta R.T.: 0.002 min
 Response: 66283
 Conc: 1.57 ng/ml



#33 AR-1260-3

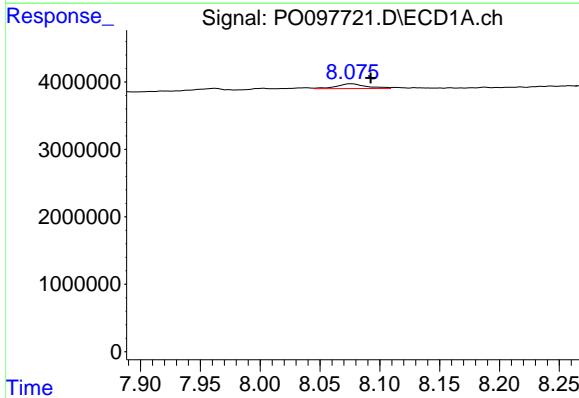
R.T.: 7.873 min
 Delta R.T.: 0.009 min
 Response: 178680
 Conc: 1.69 ng/ml

Instrument :
 ECD_O
 ClientSampleId :



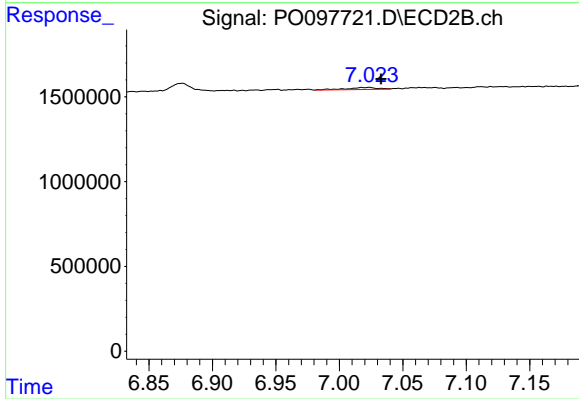
#33 AR-1260-3

R.T.: 6.557 min
 Delta R.T.: -0.001 min
 Response: 144043
 Conc: 3.44 ng/ml



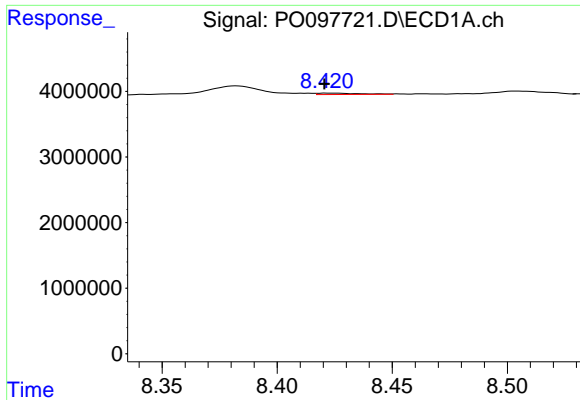
#34 AR-1260-4

R.T.: 8.076 min
 Delta R.T.: -0.016 min
 Response: 1267452
 Conc: 11.20 ng/ml



#34 AR-1260-4

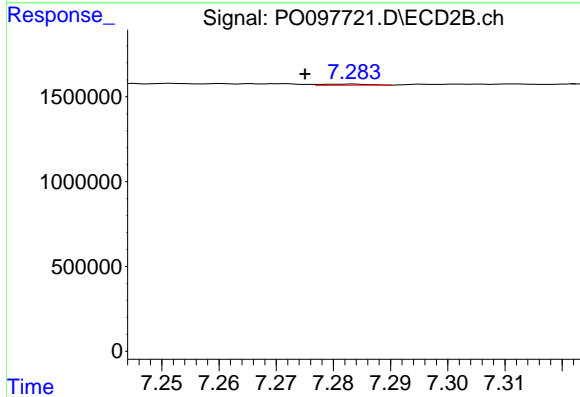
R.T.: 7.023 min
 Delta R.T.: -0.010 min
 Response: 198046
 Conc: 6.12 ng/ml



#35 AR-1260-5

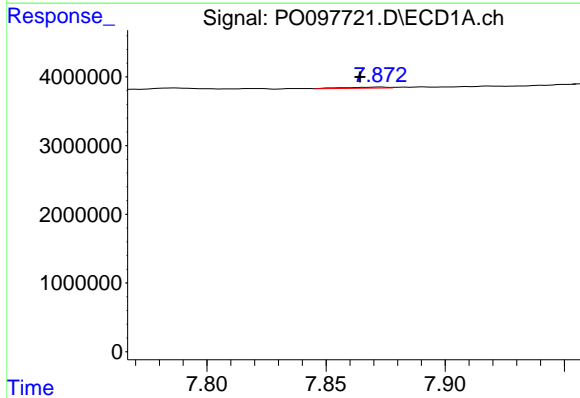
R.T.: 8.422 min
 Delta R.T.: 0.001 min
 Response: 272669
 Conc: 1.45 ng/ml

Instrument :
 ECD_O
 ClientSampleId :



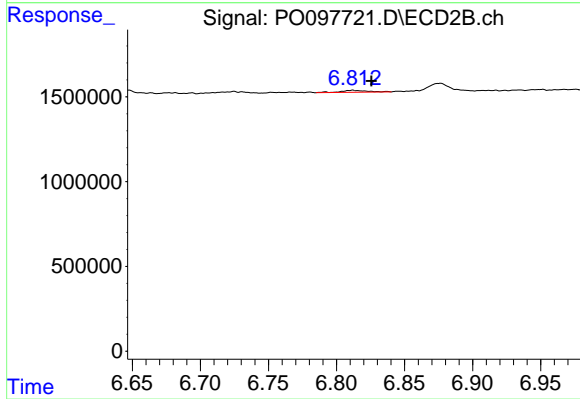
#35 AR-1260-5

R.T.: 7.283 min
 Delta R.T.: 0.008 min
 Response: 37325
 Conc: 0.57 ng/ml



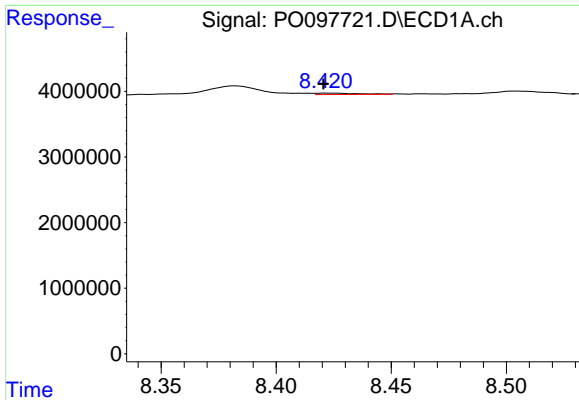
#36 AR-1262-1

R.T.: 7.873 min
 Delta R.T.: 0.008 min
 Response: 178680
 Conc: 1.19 ng/ml



#36 AR-1262-1

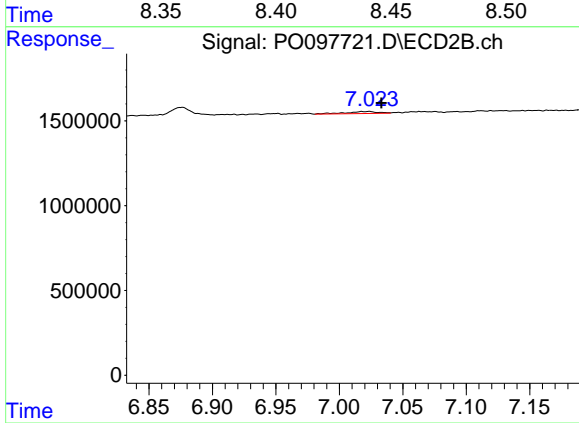
R.T.: 6.812 min
 Delta R.T.: -0.014 min
 Response: 149450
 Conc: 7.45 ng/ml



#37 AR-1262-2

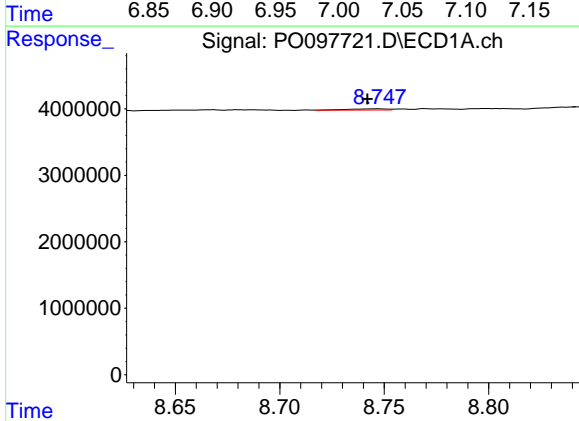
R.T.: 8.422 min
 Delta R.T.: 0.000 min
 Response: 272669
 Conc: 1.25 ng/ml

Instrument :
 ECD_O
 ClientSampleId :



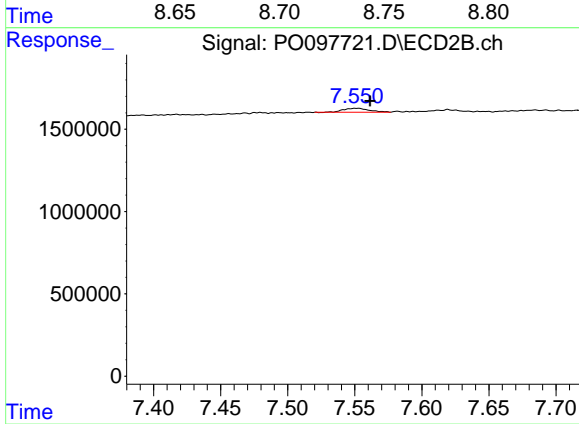
#37 AR-1262-2

R.T.: 7.023 min
 Delta R.T.: -0.010 min
 Response: 198046
 Conc: 4.53 ng/ml



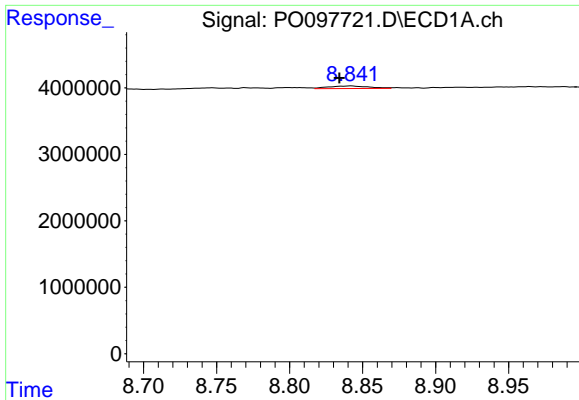
#38 AR-1262-3

R.T.: 8.747 min
 Delta R.T.: 0.005 min
 Response: 254883
 Conc: 1.64 ng/ml



#38 AR-1262-3

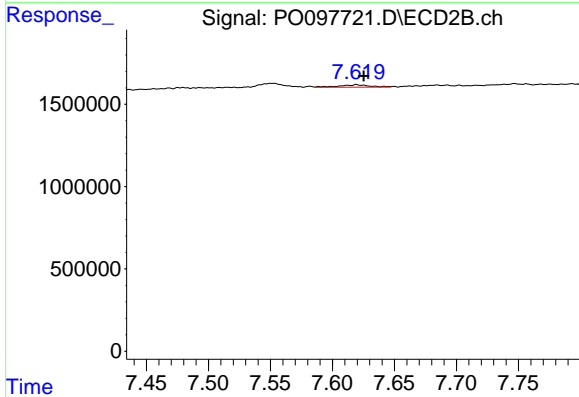
R.T.: 7.551 min
 Delta R.T.: -0.010 min
 Response: 319672
 Conc: 10.26 ng/ml



#39 AR-1262-4

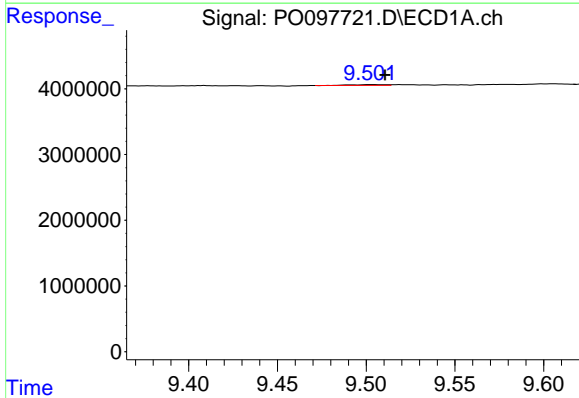
R.T.: 8.842 min
 Delta R.T.: 0.008 min
 Response: 735067
 Conc: 5.90 ng/ml

Instrument :
 ECD_O
 ClientSampleId :



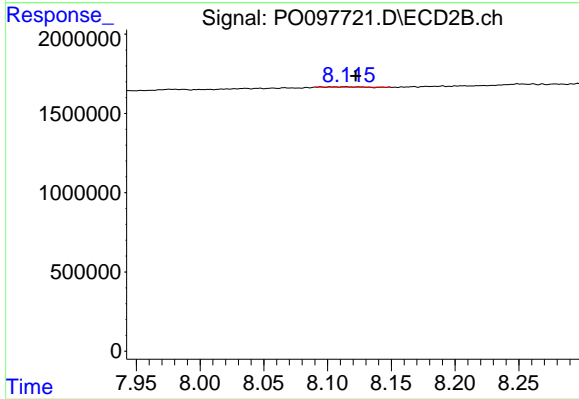
#39 AR-1262-4

R.T.: 7.619 min
 Delta R.T.: -0.006 min
 Response: 241928
 Conc: 4.30 ng/ml



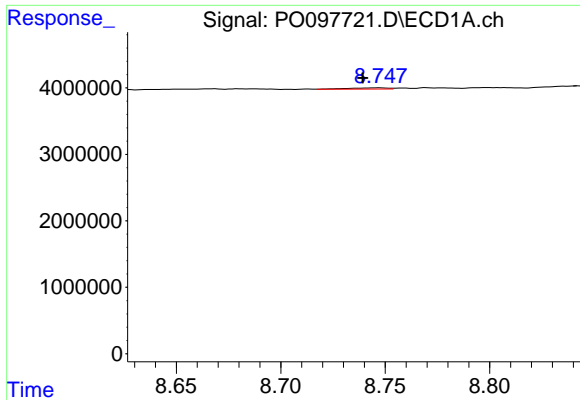
#40 AR-1262-5

R.T.: 9.503 min
 Delta R.T.: -0.007 min
 Response: 162219
 Conc: 2.36 ng/ml



#40 AR-1262-5

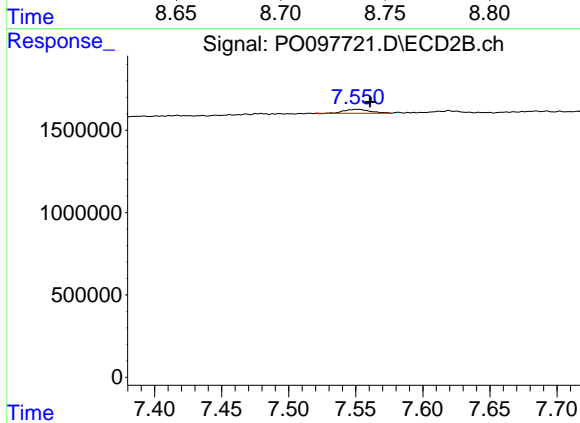
R.T.: 8.115 min
 Delta R.T.: -0.007 min
 Response: 22953
 Conc: 0.98 ng/ml



#41 AR-1268-1

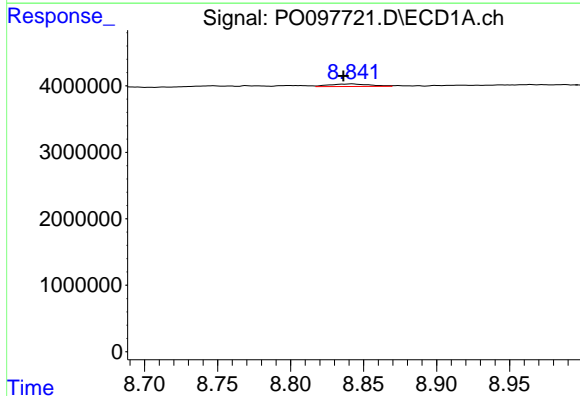
R.T.: 8.747 min
 Delta R.T.: 0.008 min
 Response: 254883
 Conc: 0.90 ng/ml

Instrument :
 ECD_O
 ClientSampleId :



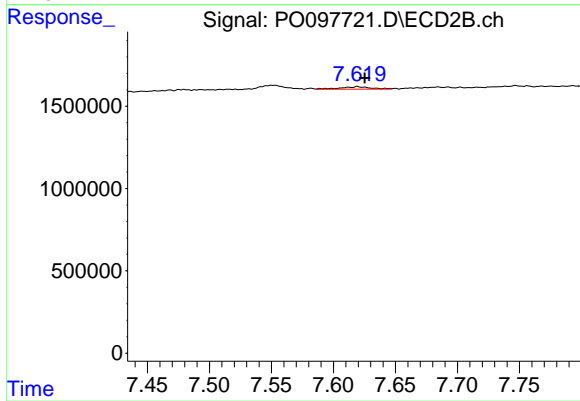
#41 AR-1268-1

R.T.: 7.551 min
 Delta R.T.: -0.009 min
 Response: 319672
 Conc: 3.34 ng/ml



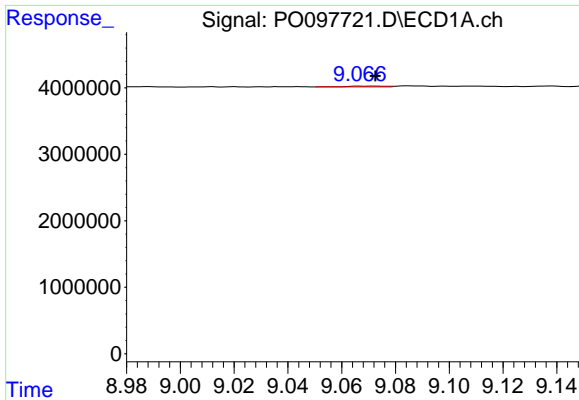
#42 AR-1268-2

R.T.: 8.842 min
 Delta R.T.: 0.006 min
 Response: 735067
 Conc: 2.89 ng/ml



#42 AR-1268-2

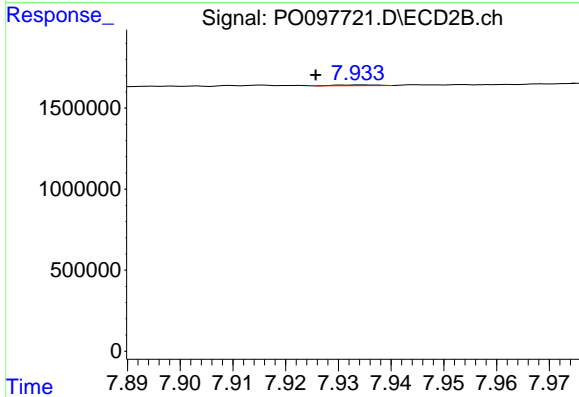
R.T.: 7.619 min
 Delta R.T.: -0.006 min
 Response: 241928
 Conc: 2.92 ng/ml



#43 AR-1268-3

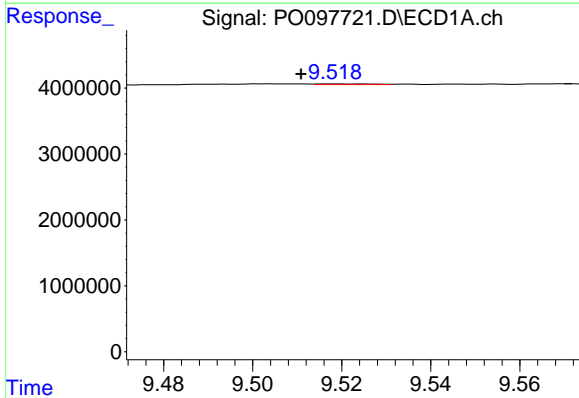
R.T.: 9.073 min
 Delta R.T.: 0.000 min
 Response: 117832
 Conc: 0.52 ng/ml

Instrument :
 ECD_O
 ClientSampleId :



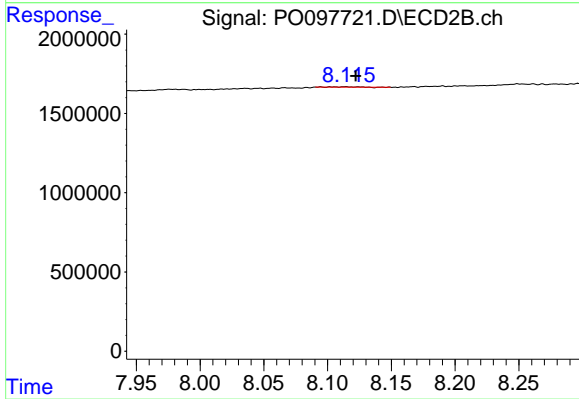
#43 AR-1268-3

R.T.: 7.935 min
 Delta R.T.: 0.009 min
 Response: 27392
 Conc: 1.38 ng/ml



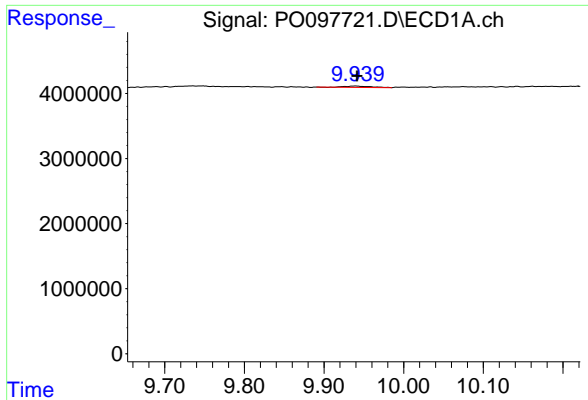
#44 AR-1268-4

R.T.: 9.518 min
 Delta R.T.: 0.007 min
 Response: 87030
 Conc: 1.13 ng/ml



#44 AR-1268-4

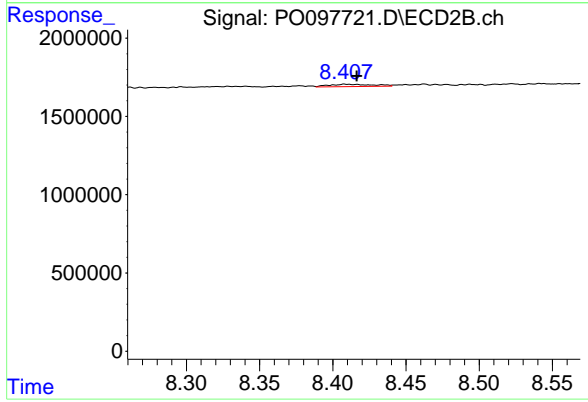
R.T.: 8.115 min
 Delta R.T.: -0.007 min
 Response: 22953
 Conc: 0.89 ng/ml



#45 AR-1268-5

R.T.: 9.940 min
 Delta R.T.: -0.002 min
 Response: 435366
 Conc: 0.63 ng/ml

Instrument :
 ECD_O
 ClientSampleId :



#45 AR-1268-5

R.T.: 8.410 min
 Delta R.T.: -0.007 min
 Response: 329799
 Conc: 1.45 ng/ml