

Data Path : Z:\pestpcbsrv\HPCHEM1\ECD_0\Data\P0090523\
 Data File : P0097732.D
 Signal(s) : Signal #1: ECD1A.ch Signal #2: ECD2B.ch
 Acq On : 05 Sep 2023 20:50
 Operator : YP/AJ
 Sample : AR1268CCC500
 Misc :
 ALS Vial : 7 Sample Multiplier: 1

Instrument :
 ECD_0
 ClientSampleId :
 AR1268CCC500

Integration File signal 1: autoint1.e
 Integration File signal 2: autoint2.e
 Quant Time: Sep 06 01:59:22 2023
 Quant Method : Z:\pestpcbsrv\HPCHEM1\ECD_0\methods\P0082823.M
 Quant Title : GC EXTRACTABLES
 QLast Update : Tue Aug 29 10:29:21 2023
 Response via : Initial Calibration
 Integrator: ChemStation

Volume Inj. : 2 µl
 Signal #1 Phase : ZB-MR1 Signal #2 Phase: ZB-MR2
 Signal #1 Info : 30Mx0.32mmx 0.50µ Signal #2 Info : 30M x 0.32mm x 0.25µm

Compound	RT#1	RT#2	Resp#1	Resp#2	ng/ml	ng/ml

System Monitoring Compounds						
1) SA Tetrachlo...	4.445	3.625	143.0E6	33164748	42.847	49.160
2) SA Decachlor...	10.299	8.663	139.4E6	53006284	75.944	92.339
Target Compounds						
3) L1 AR-1016-1	5.621	4.718	771515	178855	8.572	8.216
4) L1 AR-1016-2	5.645	4.734	877547	220988	6.324	7.324
5) L1 AR-1016-3	5.705	4.911	252517	108955	2.785	6.745 #
6) L1 AR-1016-4	5.800	4.949	225521	149239	3.253	10.400 #
7) L1 AR-1016-5	6.104	5.168	425457	680851	5.990	37.229 #
8) L2 AR-1221-1	4.648	3.854	254050	167211	6.312	20.426 #
9) L2 AR-1221-2	4.754	3.927	2333660	385140	77.635	66.452
10) L2 AR-1221-3	4.817	3.974	135554	57021	1.522	3.101 #
11) L3 AR-1232-1	4.817	3.974	135554	57021	1.838	3.785 #
12) L3 AR-1232-2	5.356	4.734	179371	220988	4.681	15.830 #
13) L3 AR-1232-3	5.645	4.911	877547	108955	13.568	15.513
14) L3 AR-1232-4	5.815	4.994	179510	559690	5.635	79.158 #
15) L3 AR-1232-5	5.899	5.168	761397	680851	25.876	86.499 #
16) L4 AR-1242-1	5.621	4.718	771515	178855	9.526	9.272
17) L4 AR-1242-2	5.645	4.734	877547	220988	7.027	8.119
18) L4 AR-1242-3	5.705	4.911	252517	108955	3.071	7.592 #
19) L4 AR-1242-4	5.815	4.994	179510	559690	2.860	35.337 #
20) L4 AR-1242-5	6.567	5.523	1070335	871829	17.018	49.400 #
21) L5 AR-1248-1	5.621	4.718	771515	178855	13.081	13.015
22) L5 AR-1248-2	5.899	4.949	761397	149239	7.698	6.730
23) L5 AR-1248-3	6.104	4.994	425457	559690	4.106	24.342 #
24) L5 AR-1248-4	6.512	5.168	569809	680851	6.229	25.090 #
25) L5 AR-1248-5	6.567	5.553	1070335	1340161	10.543	59.279 #
26) L6 AR-1254-1	6.488	5.523	774432	871829	7.044	22.589 #
27) L6 AR-1254-2	6.711	5.671	634223	885643	3.892	26.002 #
28) L6 AR-1254-3	7.078	6.086	1283560	96091	7.882	1.811 #
29) L6 AR-1254-4	7.363	6.305	1361119	184681	13.965	6.773 #
30) L6 AR-1254-5	7.784	6.722	891383	90341	7.894	2.049 #
31) L7 AR-1260-1	7.251	6.221	811613	145645	6.358	3.900 #
32) L7 AR-1260-2	7.507	6.397	924946	331412	6.788	7.832
33) L7 AR-1260-3	7.866	6.556	22581377	805303	213.640	19.239 #
34) L7 AR-1260-4	8.116	7.024	29433093	11652912	260.184	360.291 #
35) L7 AR-1260-5	8.422	7.267	10681537	4678312	56.823	70.854
36) L8 AR-1262-1	7.866	6.819	22581377	627753	150.060	31.280 #
37) L8 AR-1262-2	8.422	7.024	10681537	11652912	48.777	266.710 #
38) L8 AR-1262-3	8.742	7.553	114.1E6	45812481	735.974	1469.987 #
39) L8 AR-1262-4	8.839	7.618	104.6E6	41972497	839.466	746.190
40) L8 AR-1262-5	9.515	8.113	36806483	14433714	535.214	613.538
41) L9 AR-1268-1	8.742	7.553	114.1E6	45812481	401.748	478.600

Data Path : Z:\pestpcbsrv\HPCHEM1\ECD_0\Data\P0090523\
 Data File : P0097732.D
 Signal(s) : Signal #1: ECD1A.ch Signal #2: ECD2B.ch
 Acq On : 05 Sep 2023 20:50
 Operator : YP/AJ
 Sample : AR1268CCC500
 Misc :
 ALS Vial : 7 Sample Multiplier: 1

Instrument :
 ECD_0
 ClientSampleId :
 AR1268CCC500

Integration File signal 1: autoint1.e
 Integration File signal 2: autoint2.e
 Quant Time: Sep 06 01:59:22 2023
 Quant Method : Z:\pestpcbsrv\HPCHEM1\ECD_0\methods\P0082823.M
 Quant Title : GC EXTRACTABLES
 QLast Update : Tue Aug 29 10:29:21 2023
 Response via : Initial Calibration
 Integrator: ChemStation

Volume Inj. : 2 µl
 Signal #1 Phase : ZB-MR1 Signal #2 Phase: ZB-MR2
 Signal #1 Info : 30Mx0.32mmx 0.50µ Signal #2 Info : 30M x 0.32mm x 0.25µm

	Compound	RT#1	RT#2	Resp#1	Resp#2	ng/ml	ng/ml
42)	L9 AR-1268-2	8.839	7.618	104.6E6	41972497	411.877	506.334
43)	L9 AR-1268-3	9.075	7.917	89535278	9411027	396.983	474.970
44)	L9 AR-1268-4	9.515	8.113	36806483	14433714	478.199	558.529
45)	L9 AR-1268-5	9.946	8.407	288.9E6	117.5E6	418.382	515.404

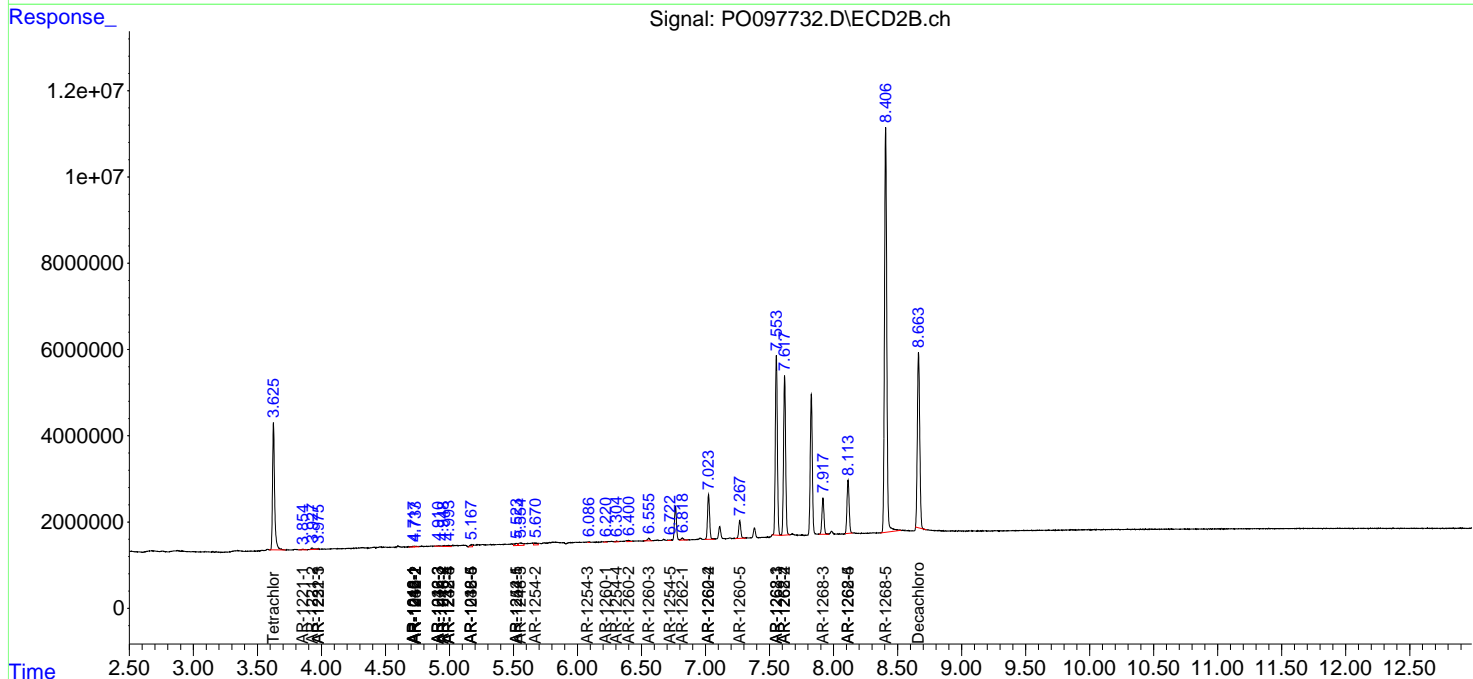
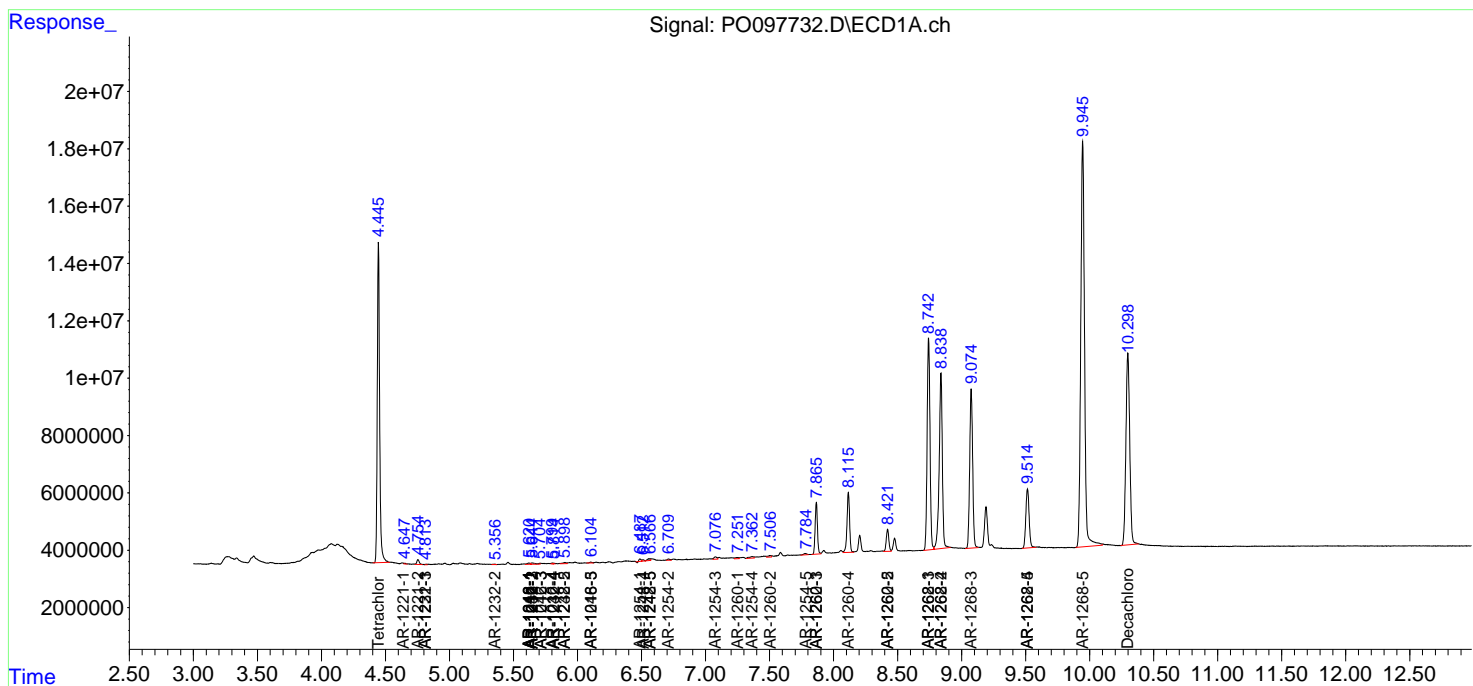
(f)=RT Delta > 1/2 Window (#)=Amounts differ by > 25% (m)=manual int.

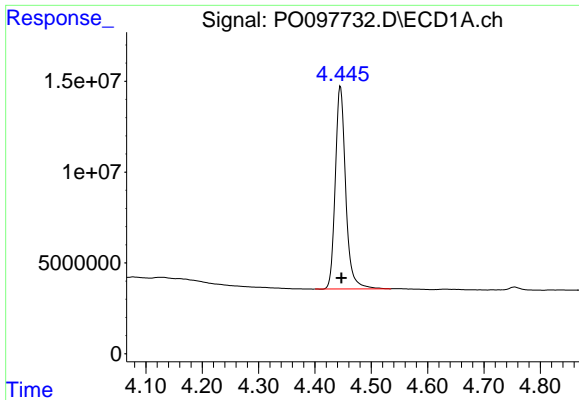
Data Path : Z:\pestpcbsrv\HPCHEM1\ECD_O\Data\PO090523\
 Data File : PO097732.D
 Signal(s) : Signal #1: ECD1A.ch Signal #2: ECD2B.ch
 Acq On : 05 Sep 2023 20:50
 Operator : YP/AJ
 Sample : AR1268CCC500
 Misc :
 ALS Vial : 7 Sample Multiplier: 1

Instrument :
 ECD_O
 ClientSampleId :
 AR1268CCC500

Integration File signal 1: autoint1.e
 Integration File signal 2: autoint2.e
 Quant Time: Sep 06 01:59:22 2023
 Quant Method : Z:\pestpcbsrv\HPCHEM1\ECD_O\methods\PO082823.M
 Quant Title : GC EXTRACTABLES
 QLast Update : Tue Aug 29 10:29:21 2023
 Response via : Initial Calibration
 Integrator: ChemStation

Volume Inj. : 2 µl
 Signal #1 Phase : ZB-MR1 Signal #2 Phase: ZB-MR2
 Signal #1 Info : 30Mx0.32mmx 0.50µ Signal #2 Info : 30M x 0.32mm x 0.25µm

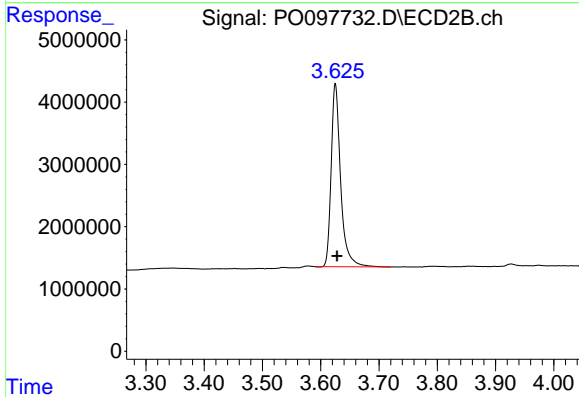




#1 Tetrachloro-m-xylene

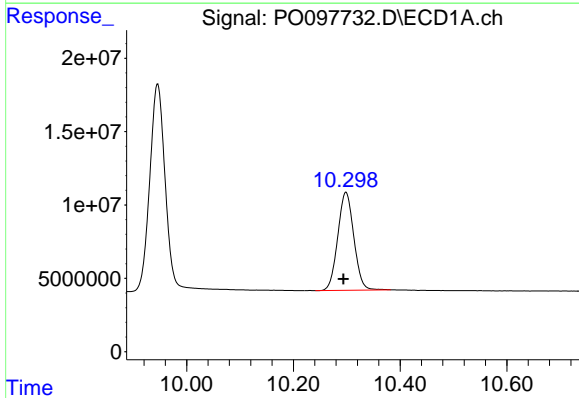
R.T.: 4.445 min
 Delta R.T.: -0.002 min
 Response: 143004855
 Conc: 42.85 ng/ml

Instrument :
 ECD_O
 ClientSampleId :
 AR1268CCC500



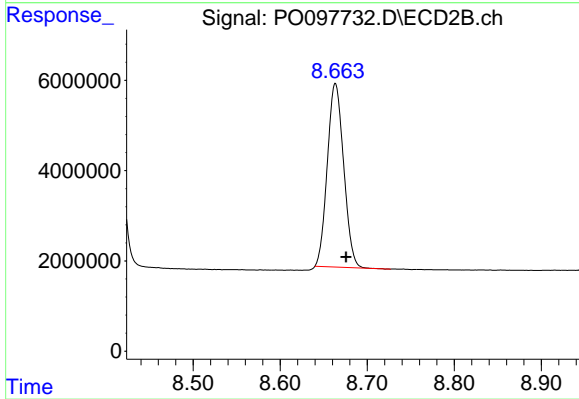
#1 Tetrachloro-m-xylene

R.T.: 3.625 min
 Delta R.T.: -0.003 min
 Response: 33164748
 Conc: 49.16 ng/ml



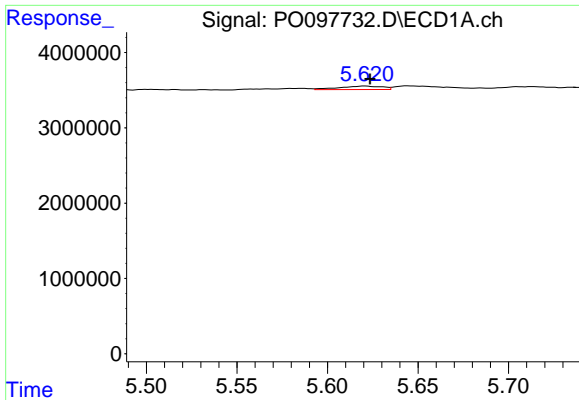
#2 Decachlorobiphenyl

R.T.: 10.299 min
 Delta R.T.: 0.005 min
 Response: 139385541
 Conc: 75.94 ng/ml



#2 Decachlorobiphenyl

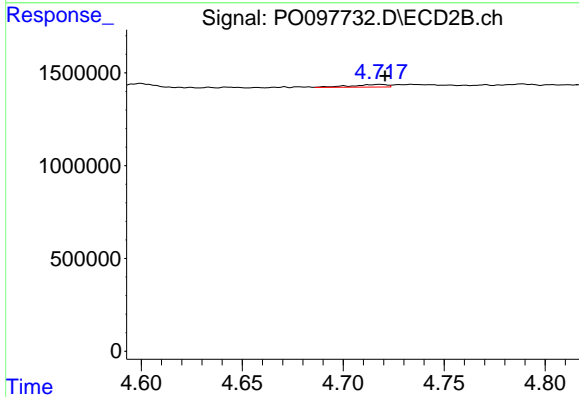
R.T.: 8.663 min
 Delta R.T.: -0.012 min
 Response: 53006284
 Conc: 92.34 ng/ml



#3 AR-1016-1

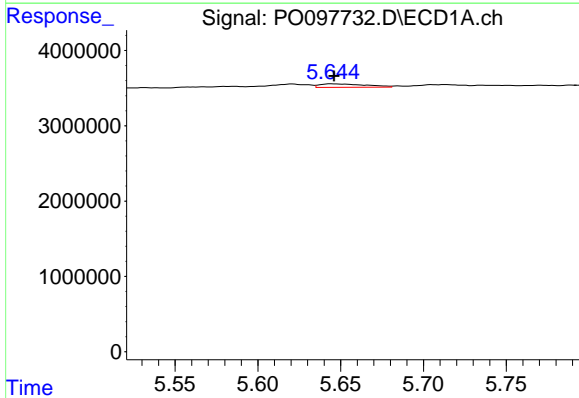
R.T.: 5.621 min
 Delta R.T.: -0.003 min
 Response: 771515
 Conc: 8.57 ng/ml

Instrument :
 ECD_O
 ClientSampleId :
 AR1268CCC500



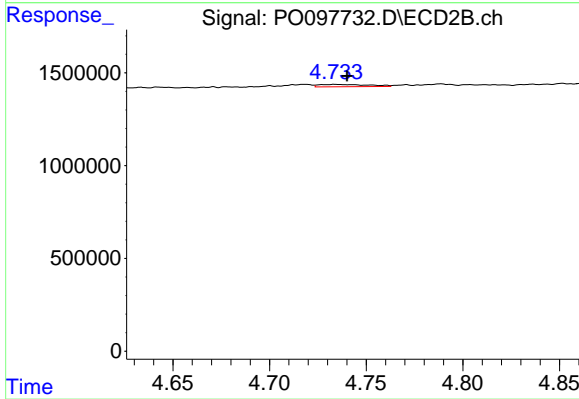
#3 AR-1016-1

R.T.: 4.718 min
 Delta R.T.: -0.002 min
 Response: 178855
 Conc: 8.22 ng/ml



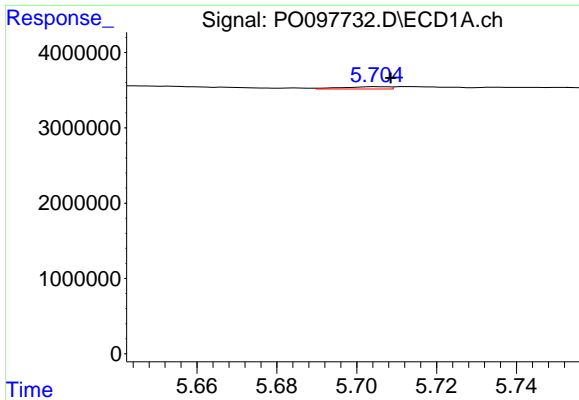
#4 AR-1016-2

R.T.: 5.645 min
 Delta R.T.: -0.002 min
 Response: 877547
 Conc: 6.32 ng/ml



#4 AR-1016-2

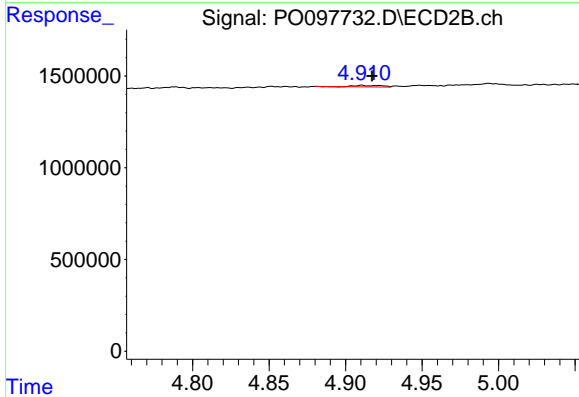
R.T.: 4.734 min
 Delta R.T.: -0.006 min
 Response: 220988
 Conc: 7.32 ng/ml



#5 AR-1016-3

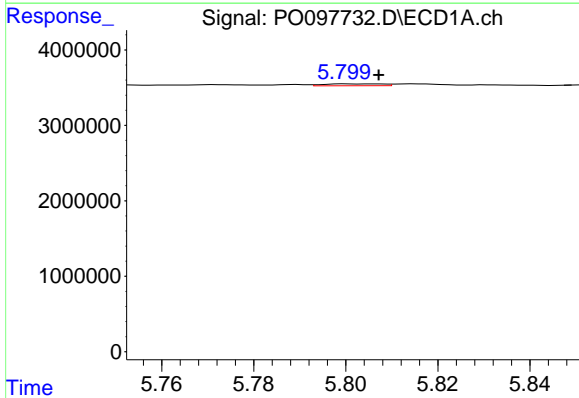
R.T.: 5.705 min
 Delta R.T.: -0.003 min
 Response: 252517
 Conc: 2.79 ng/ml

Instrument :
 ECD_O
 ClientSampleId :
 AR1268CCC500



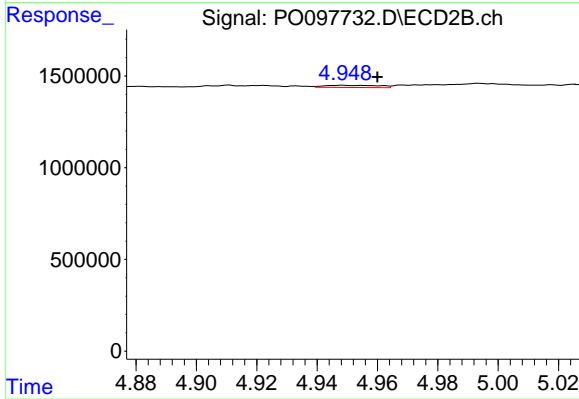
#5 AR-1016-3

R.T.: 4.911 min
 Delta R.T.: -0.007 min
 Response: 108955
 Conc: 6.75 ng/ml



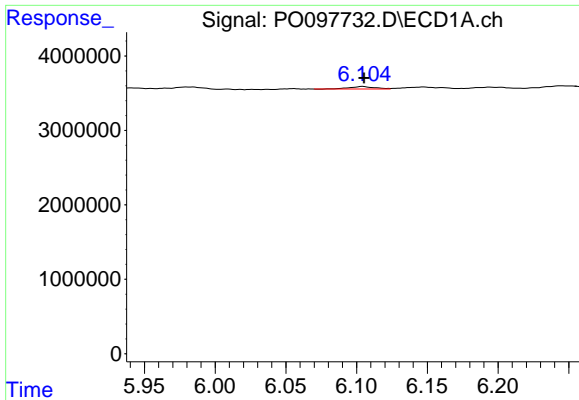
#6 AR-1016-4

R.T.: 5.800 min
 Delta R.T.: -0.007 min
 Response: 225521
 Conc: 3.25 ng/ml



#6 AR-1016-4

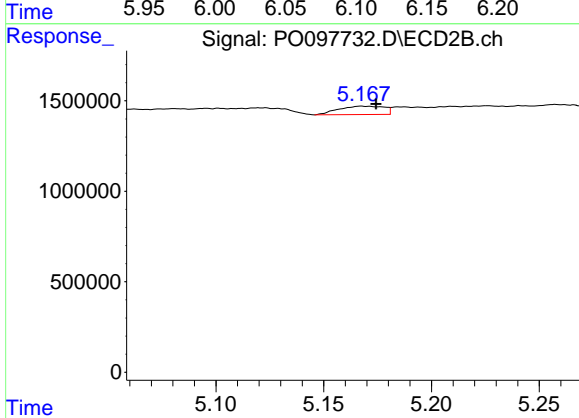
R.T.: 4.949 min
 Delta R.T.: -0.012 min
 Response: 149239
 Conc: 10.40 ng/ml



#7 AR-1016-5

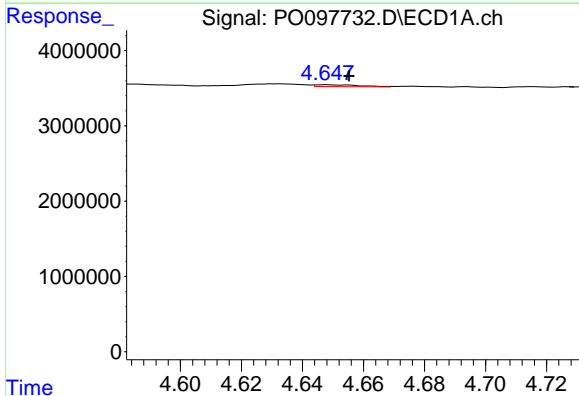
R.T.: 6.104 min
 Delta R.T.: 0.000 min
 Response: 425457
 Conc: 5.99 ng/ml

Instrument :
 ECD_O
 ClientSampleId :
 AR1268CCC500



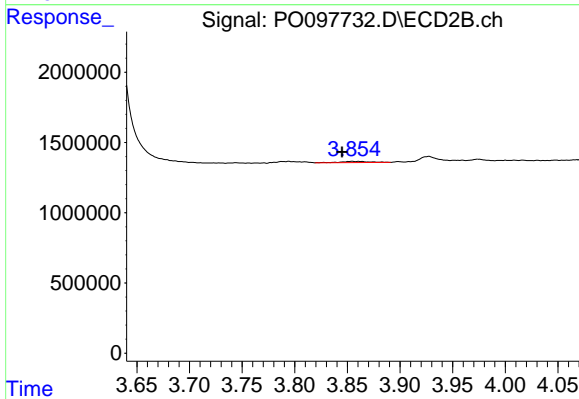
#7 AR-1016-5

R.T.: 5.168 min
 Delta R.T.: -0.007 min
 Response: 680851
 Conc: 37.23 ng/ml



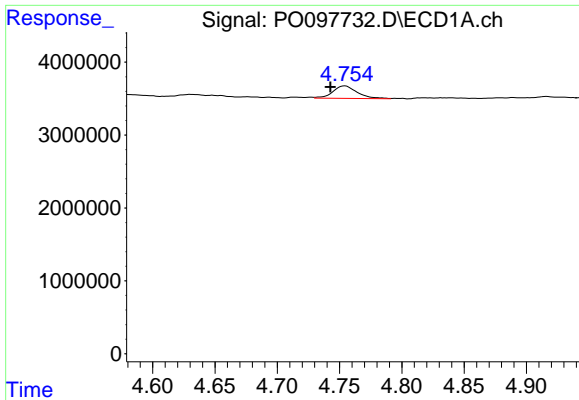
#8 AR-1221-1

R.T.: 4.648 min
 Delta R.T.: -0.007 min
 Response: 254050
 Conc: 6.31 ng/ml



#8 AR-1221-1

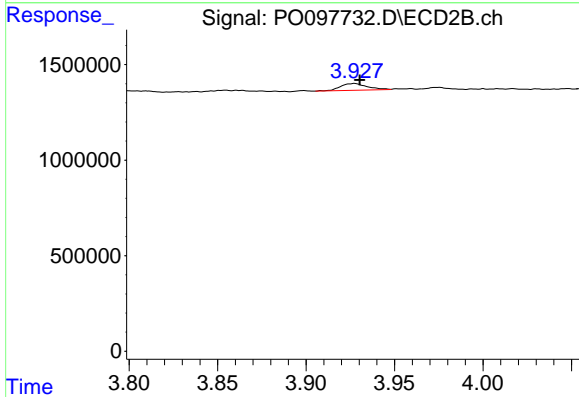
R.T.: 3.854 min
 Delta R.T.: 0.010 min
 Response: 167211
 Conc: 20.43 ng/ml



#9 AR-1221-2

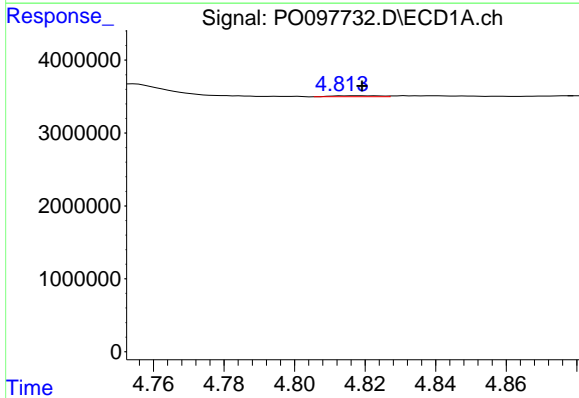
R.T.: 4.754 min
 Delta R.T.: 0.012 min
 Response: 2333660
 Conc: 77.64 ng/ml

Instrument :
 ECD_O
 ClientSampleId :
 AR1268CCC500



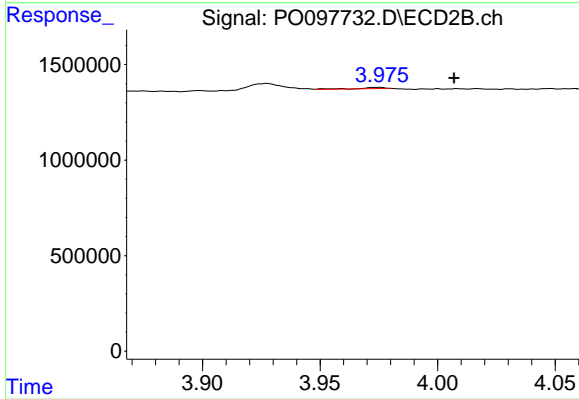
#9 AR-1221-2

R.T.: 3.927 min
 Delta R.T.: -0.003 min
 Response: 385140
 Conc: 66.45 ng/ml



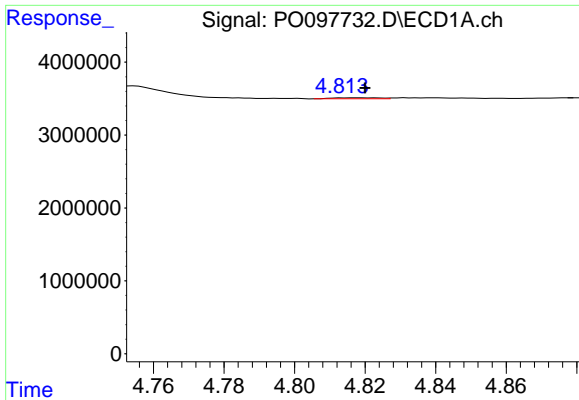
#10 AR-1221-3

R.T.: 4.817 min
 Delta R.T.: -0.002 min
 Response: 135554
 Conc: 1.52 ng/ml



#10 AR-1221-3

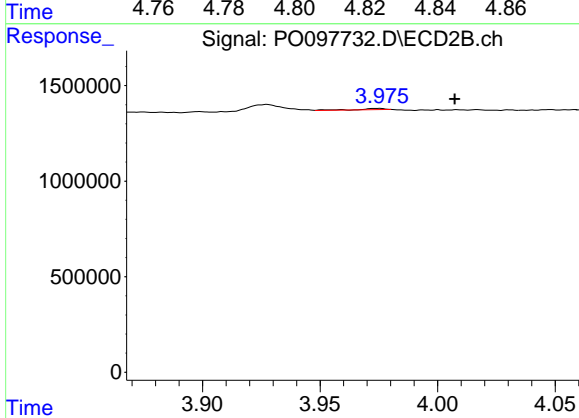
R.T.: 3.974 min
 Delta R.T.: -0.033 min
 Response: 57021
 Conc: 3.10 ng/ml



#11 AR-1232-1

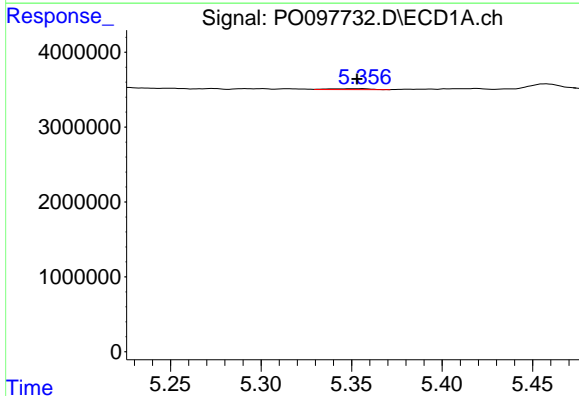
R.T.: 4.817 min
 Delta R.T.: -0.003 min
 Response: 135554
 Conc: 1.84 ng/ml

Instrument :
 ECD_O
 ClientSampleId :
 AR1268CCC500



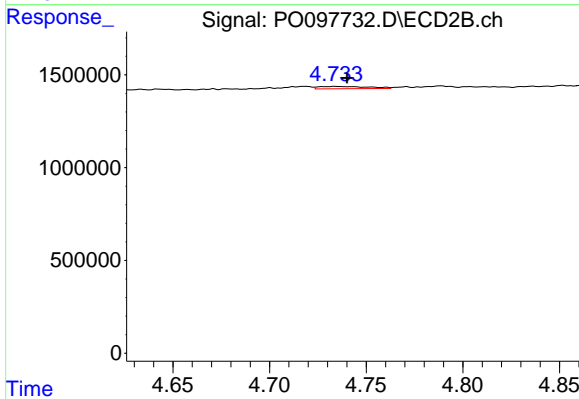
#11 AR-1232-1

R.T.: 3.974 min
 Delta R.T.: -0.033 min
 Response: 57021
 Conc: 3.78 ng/ml



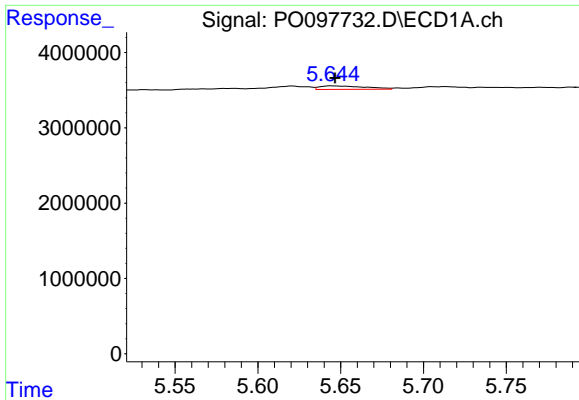
#12 AR-1232-2

R.T.: 5.356 min
 Delta R.T.: 0.004 min
 Response: 179371
 Conc: 4.68 ng/ml



#12 AR-1232-2

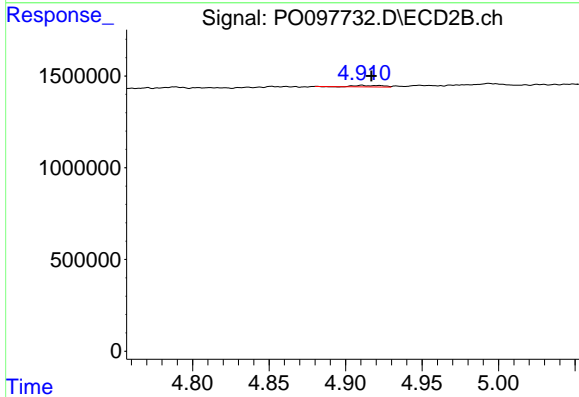
R.T.: 4.734 min
 Delta R.T.: -0.006 min
 Response: 220988
 Conc: 15.83 ng/ml



#13 AR-1232-3

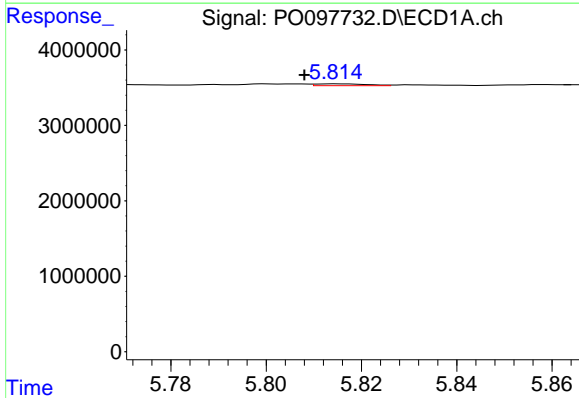
R.T.: 5.645 min
 Delta R.T.: -0.002 min
 Response: 877547
 Conc: 13.57 ng/ml

Instrument :
 ECD_O
 ClientSampleId :
 AR1268CCC500



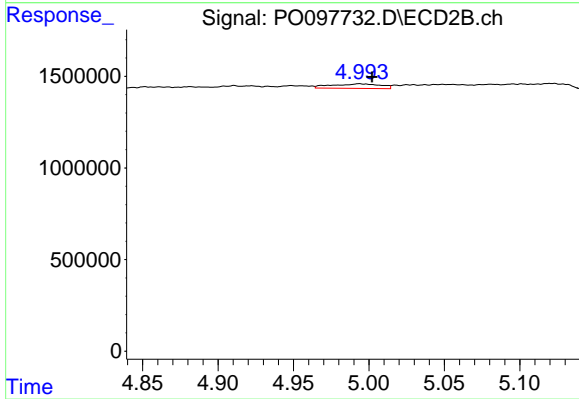
#13 AR-1232-3

R.T.: 4.911 min
 Delta R.T.: -0.006 min
 Response: 108955
 Conc: 15.51 ng/ml



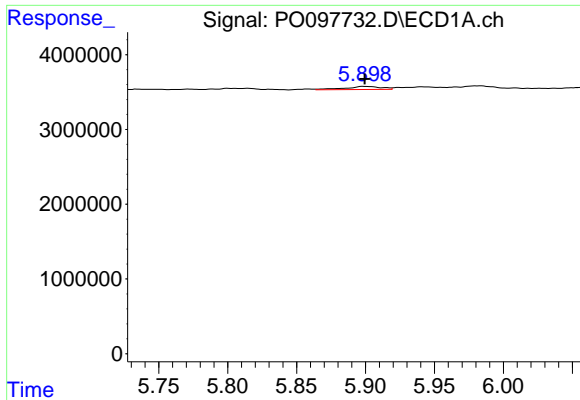
#14 AR-1232-4

R.T.: 5.815 min
 Delta R.T.: 0.007 min
 Response: 179510
 Conc: 5.64 ng/ml



#14 AR-1232-4

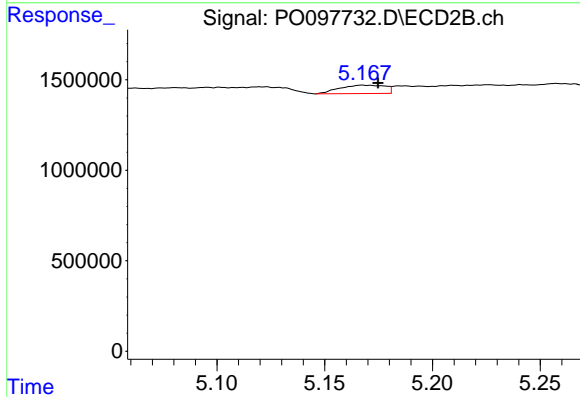
R.T.: 4.994 min
 Delta R.T.: -0.008 min
 Response: 559690
 Conc: 79.16 ng/ml



#15 AR-1232-5

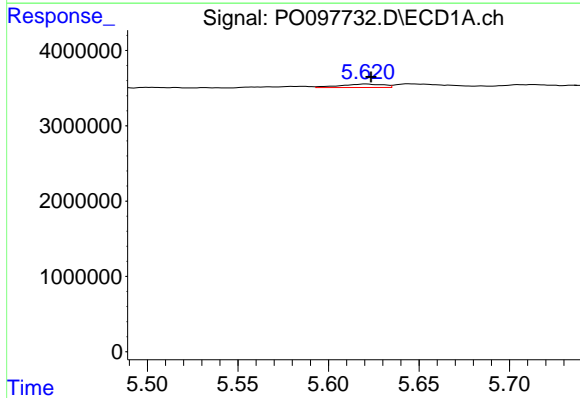
R.T.: 5.899 min
 Delta R.T.: 0.000 min
 Response: 761397
 Conc: 25.88 ng/ml

Instrument :
 ECD_O
 ClientSampleId :
 AR1268CCC500



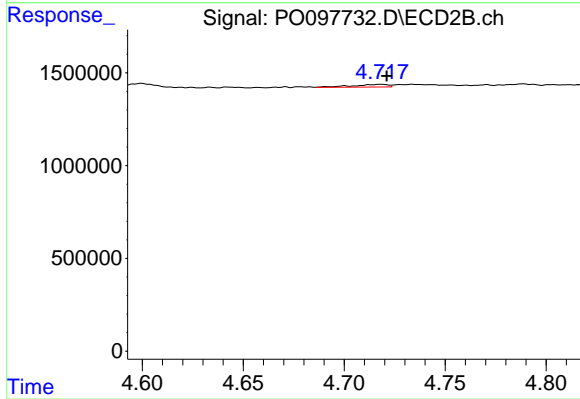
#15 AR-1232-5

R.T.: 5.168 min
 Delta R.T.: -0.007 min
 Response: 680851
 Conc: 86.50 ng/ml



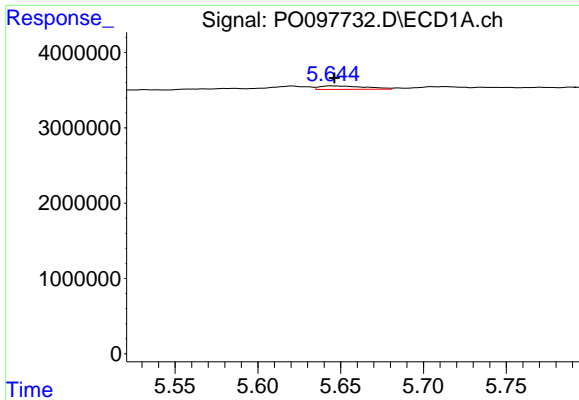
#16 AR-1242-1

R.T.: 5.621 min
 Delta R.T.: -0.003 min
 Response: 771515
 Conc: 9.53 ng/ml



#16 AR-1242-1

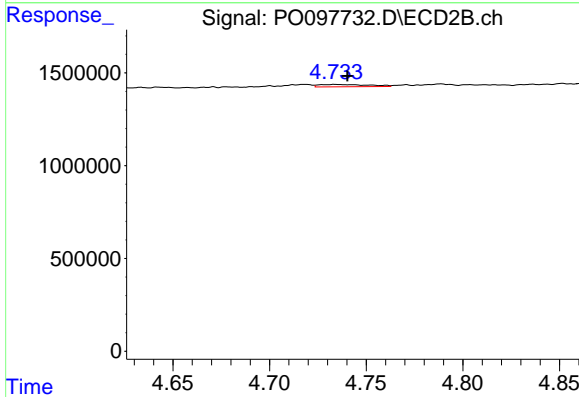
R.T.: 4.718 min
 Delta R.T.: -0.003 min
 Response: 178855
 Conc: 9.27 ng/ml



#17 AR-1242-2

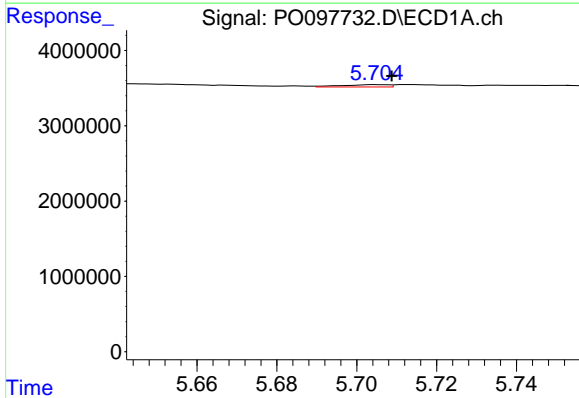
R.T.: 5.645 min
 Delta R.T.: -0.002 min
 Response: 877547
 Conc: 7.03 ng/ml

Instrument :
 ECD_O
 ClientSampleId :
 AR1268CCC500



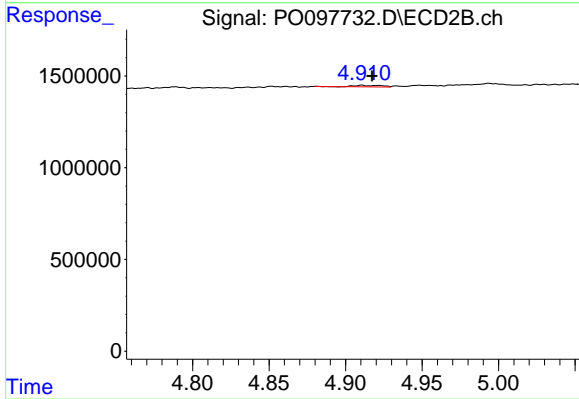
#17 AR-1242-2

R.T.: 4.734 min
 Delta R.T.: -0.006 min
 Response: 220988
 Conc: 8.12 ng/ml



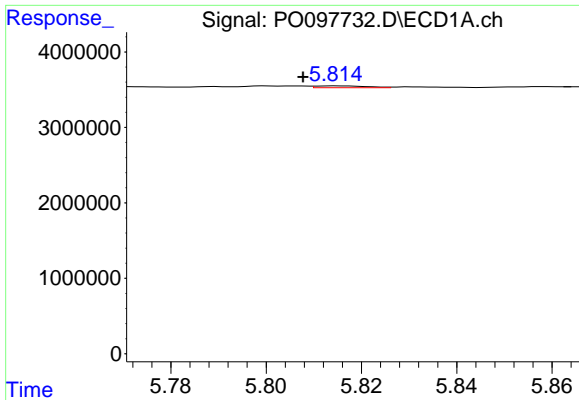
#18 AR-1242-3

R.T.: 5.705 min
 Delta R.T.: -0.003 min
 Response: 252517
 Conc: 3.07 ng/ml



#18 AR-1242-3

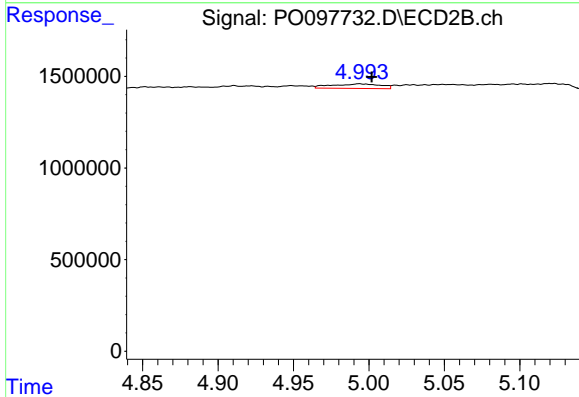
R.T.: 4.911 min
 Delta R.T.: -0.007 min
 Response: 108955
 Conc: 7.59 ng/ml



#19 AR-1242-4

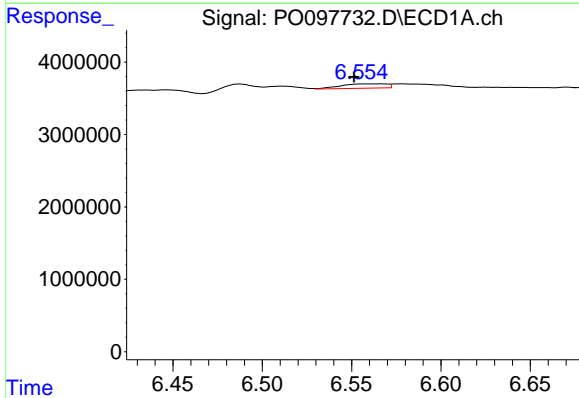
R.T.: 5.815 min
 Delta R.T.: 0.007 min
 Response: 179510
 Conc: 2.86 ng/ml

Instrument :
 ECD_O
 ClientSampleId :
 AR1268CCC500



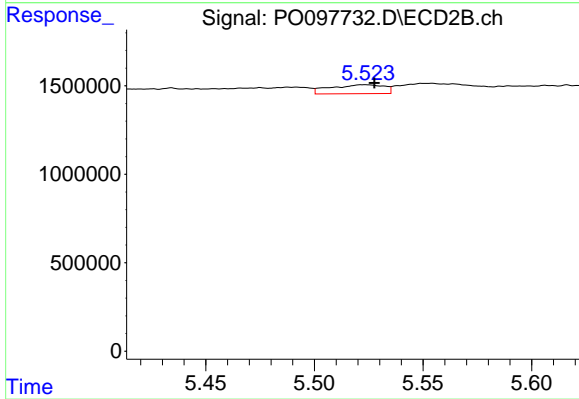
#19 AR-1242-4

R.T.: 4.994 min
 Delta R.T.: -0.008 min
 Response: 559690
 Conc: 35.34 ng/ml



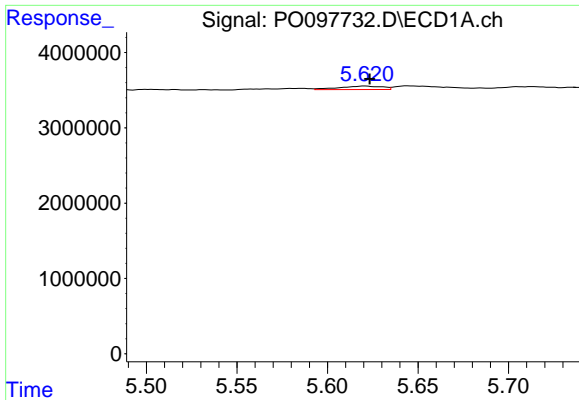
#20 AR-1242-5

R.T.: 6.567 min
 Delta R.T.: 0.015 min
 Response: 1070335
 Conc: 17.02 ng/ml



#20 AR-1242-5

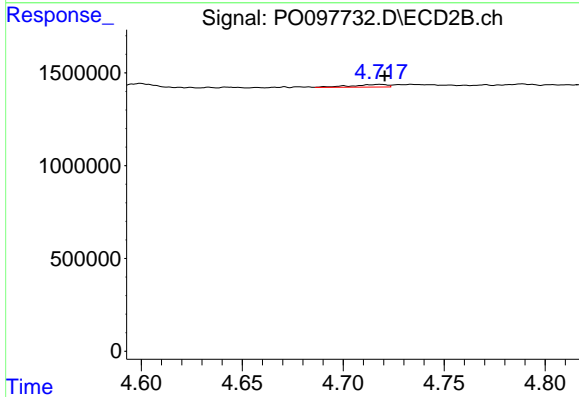
R.T.: 5.523 min
 Delta R.T.: -0.005 min
 Response: 871829
 Conc: 49.40 ng/ml



#21 AR-1248-1

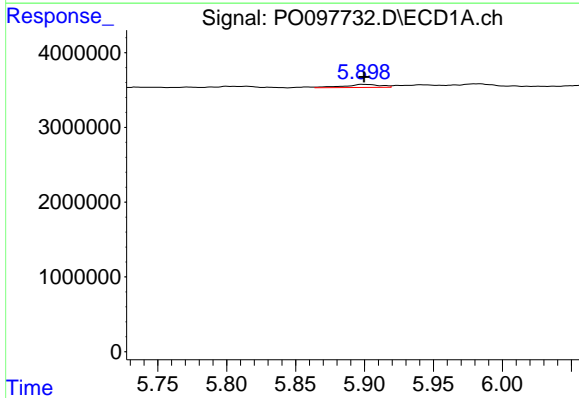
R.T.: 5.621 min
 Delta R.T.: -0.002 min
 Response: 771515
 Conc: 13.08 ng/ml

Instrument :
 ECD_O
 ClientSampleId :
 AR1268CCC500



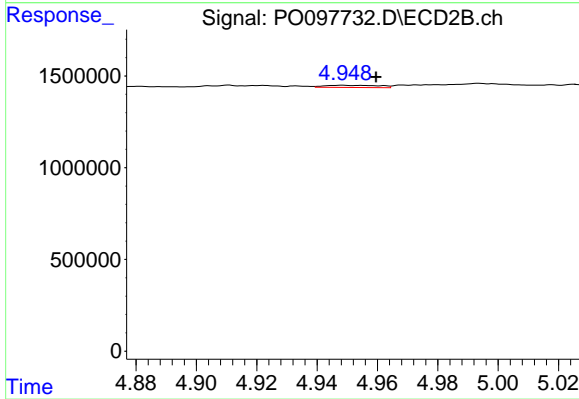
#21 AR-1248-1

R.T.: 4.718 min
 Delta R.T.: -0.002 min
 Response: 178855
 Conc: 13.02 ng/ml



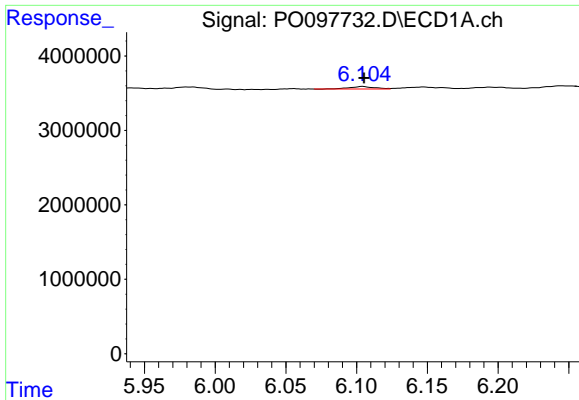
#22 AR-1248-2

R.T.: 5.899 min
 Delta R.T.: 0.000 min
 Response: 761397
 Conc: 7.70 ng/ml



#22 AR-1248-2

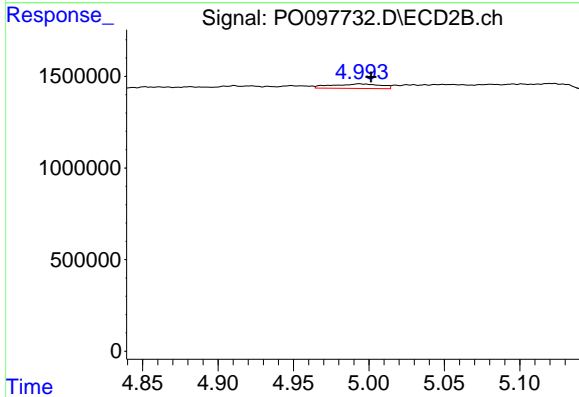
R.T.: 4.949 min
 Delta R.T.: -0.011 min
 Response: 149239
 Conc: 6.73 ng/ml



#23 AR-1248-3

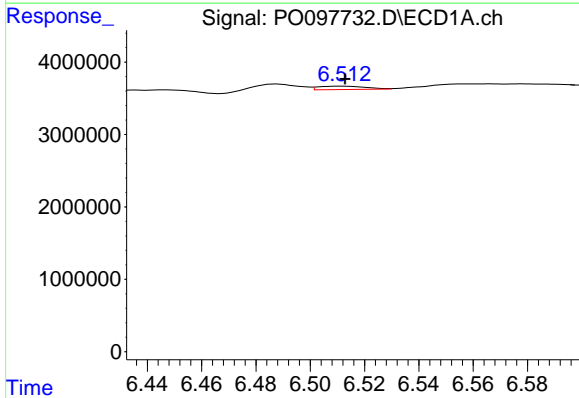
R.T.: 6.104 min
 Delta R.T.: 0.000 min
 Response: 425457
 Conc: 4.11 ng/ml

Instrument :
 ECD_O
 ClientSampleId :
 AR1268CCC500



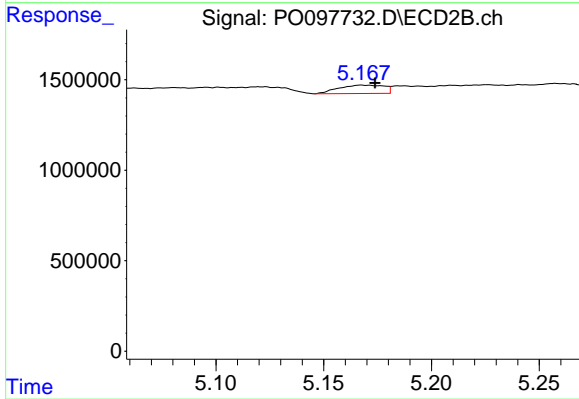
#23 AR-1248-3

R.T.: 4.994 min
 Delta R.T.: -0.008 min
 Response: 559690
 Conc: 24.34 ng/ml



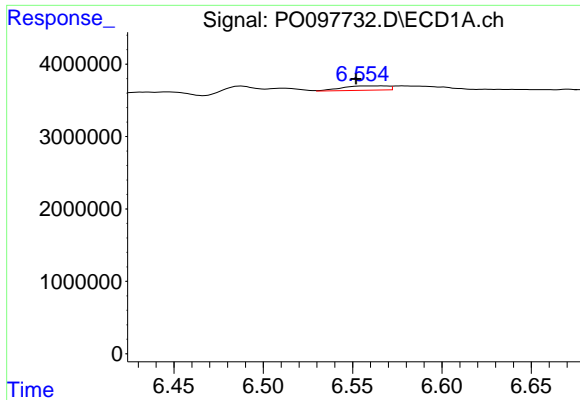
#24 AR-1248-4

R.T.: 6.512 min
 Delta R.T.: 0.000 min
 Response: 569809
 Conc: 6.23 ng/ml



#24 AR-1248-4

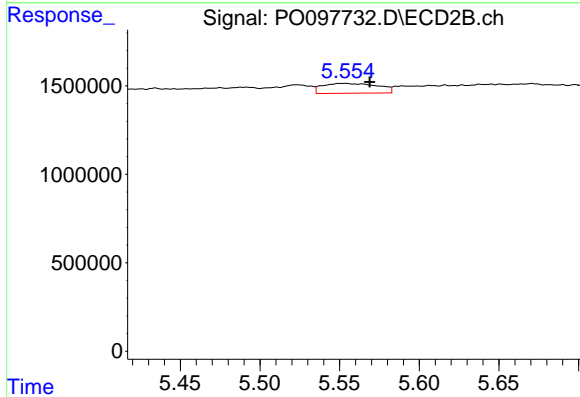
R.T.: 5.168 min
 Delta R.T.: -0.006 min
 Response: 680851
 Conc: 25.09 ng/ml



#25 AR-1248-5

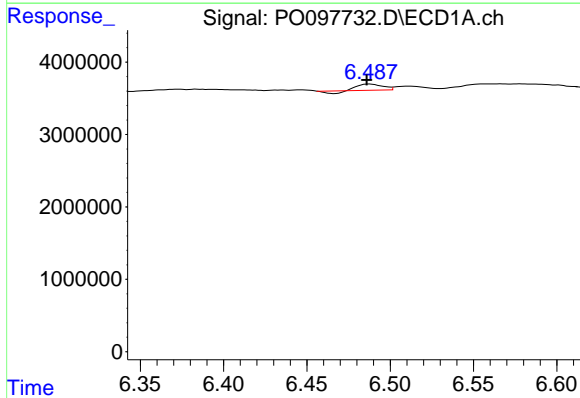
R.T.: 6.567 min
 Delta R.T.: 0.015 min
 Response: 1070335
 Conc: 10.54 ng/ml

Instrument :
 ECD_O
 ClientSampleId :
 AR1268CCC500



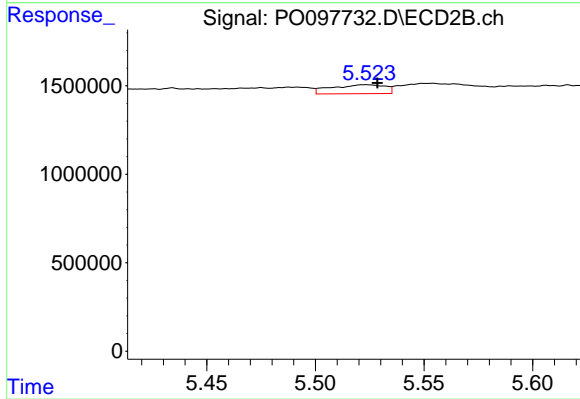
#25 AR-1248-5

R.T.: 5.553 min
 Delta R.T.: -0.016 min
 Response: 1340161
 Conc: 59.28 ng/ml



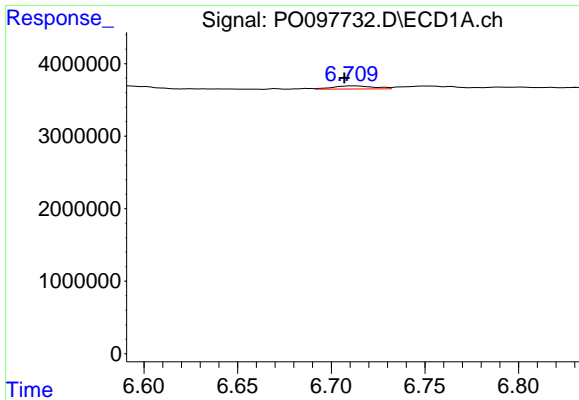
#26 AR-1254-1

R.T.: 6.488 min
 Delta R.T.: 0.002 min
 Response: 774432
 Conc: 7.04 ng/ml



#26 AR-1254-1

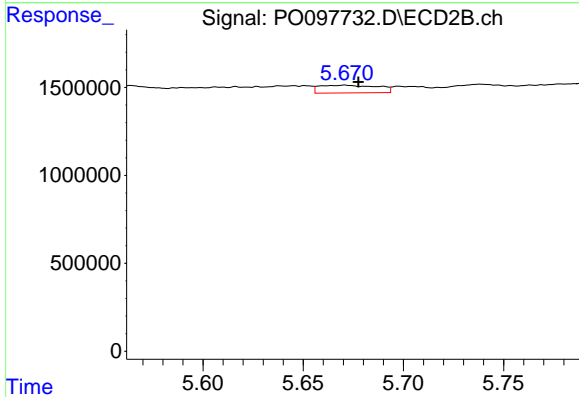
R.T.: 5.523 min
 Delta R.T.: -0.006 min
 Response: 871829
 Conc: 22.59 ng/ml



#27 AR-1254-2

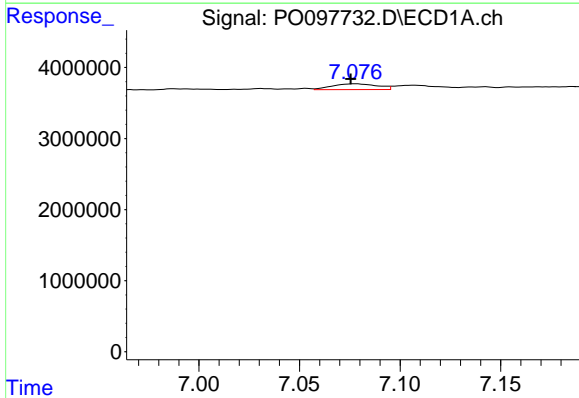
R.T.: 6.711 min
 Delta R.T.: 0.004 min
 Response: 634223
 Conc: 3.89 ng/ml

Instrument :
 ECD_O
 ClientSampleId :
 AR1268CCC500



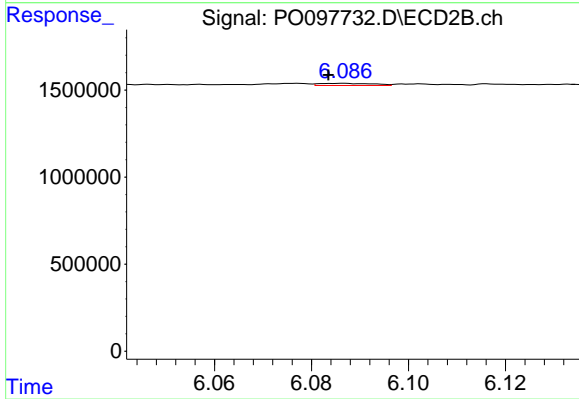
#27 AR-1254-2

R.T.: 5.671 min
 Delta R.T.: -0.007 min
 Response: 885643
 Conc: 26.00 ng/ml



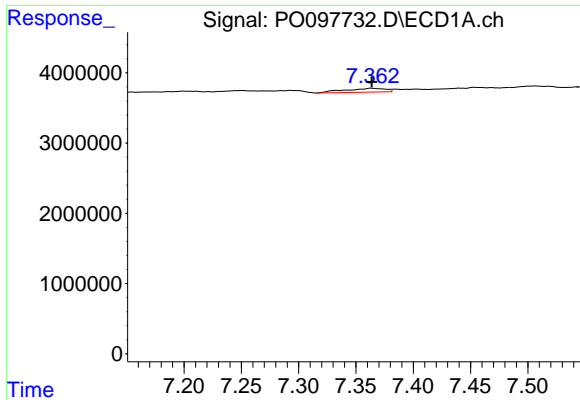
#28 AR-1254-3

R.T.: 7.078 min
 Delta R.T.: 0.002 min
 Response: 1283560
 Conc: 7.88 ng/ml



#28 AR-1254-3

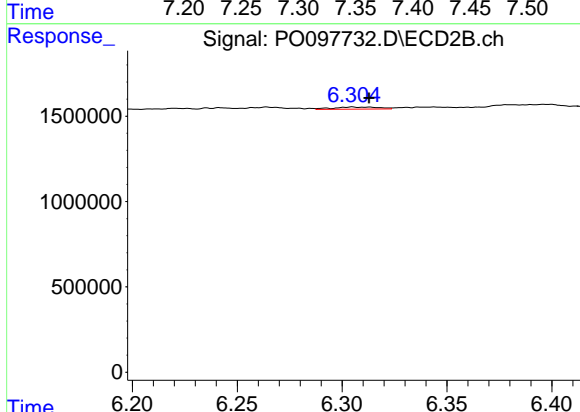
R.T.: 6.086 min
 Delta R.T.: 0.003 min
 Response: 96091
 Conc: 1.81 ng/ml



#29 AR-1254-4

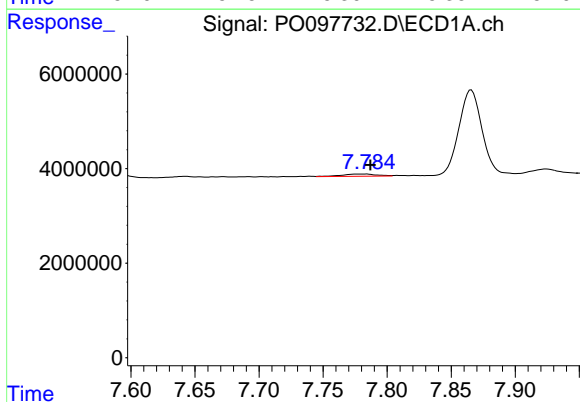
R.T.: 7.363 min
 Delta R.T.: 0.000 min
 Response: 1361119
 Conc: 13.96 ng/ml

Instrument :
 ECD_O
 ClientSampleId :
 AR1268CCC500



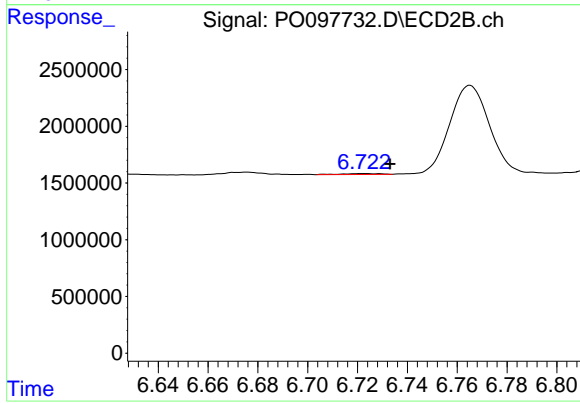
#29 AR-1254-4

R.T.: 6.305 min
 Delta R.T.: -0.008 min
 Response: 184681
 Conc: 6.77 ng/ml



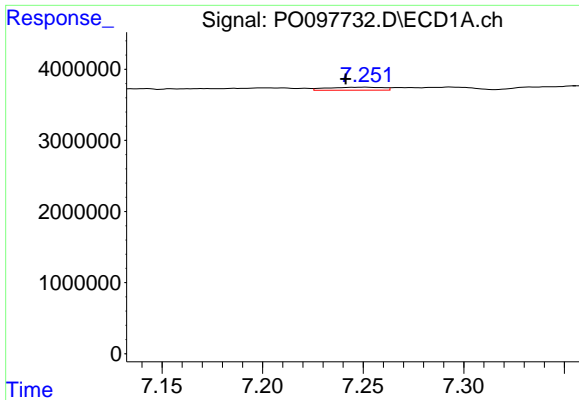
#30 AR-1254-5

R.T.: 7.784 min
 Delta R.T.: -0.003 min
 Response: 891383
 Conc: 7.89 ng/ml



#30 AR-1254-5

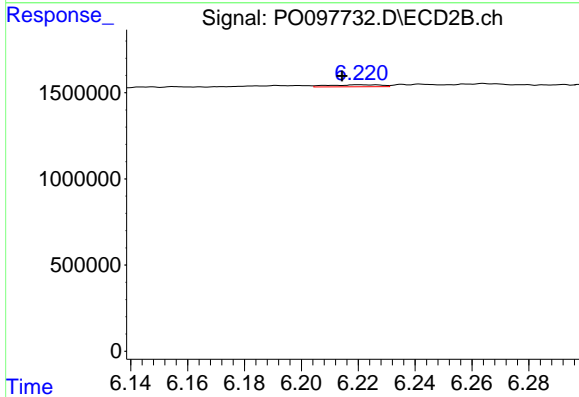
R.T.: 6.722 min
 Delta R.T.: -0.011 min
 Response: 90341
 Conc: 2.05 ng/ml



#31 AR-1260-1

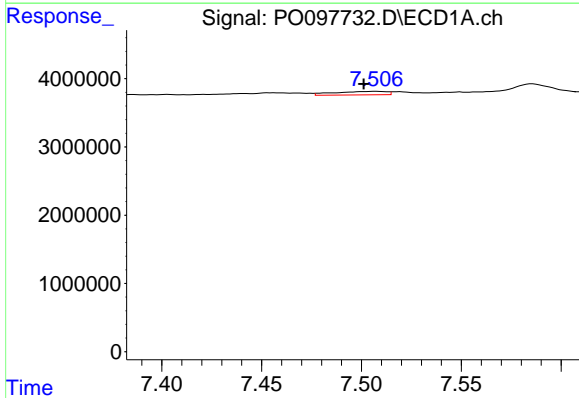
R.T.: 7.251 min
 Delta R.T.: 0.010 min
 Response: 811613
 Conc: 6.36 ng/ml

Instrument :
 ECD_O
 ClientSampleId :
 AR1268CCC500



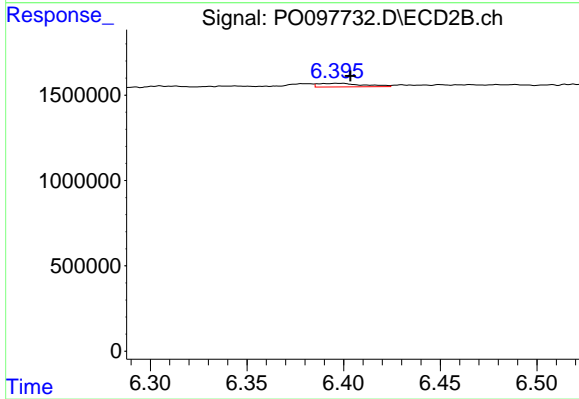
#31 AR-1260-1

R.T.: 6.221 min
 Delta R.T.: 0.006 min
 Response: 145645
 Conc: 3.90 ng/ml



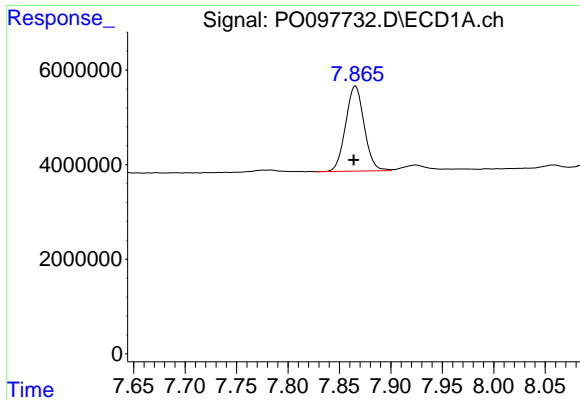
#32 AR-1260-2

R.T.: 7.507 min
 Delta R.T.: 0.006 min
 Response: 924946
 Conc: 6.79 ng/ml



#32 AR-1260-2

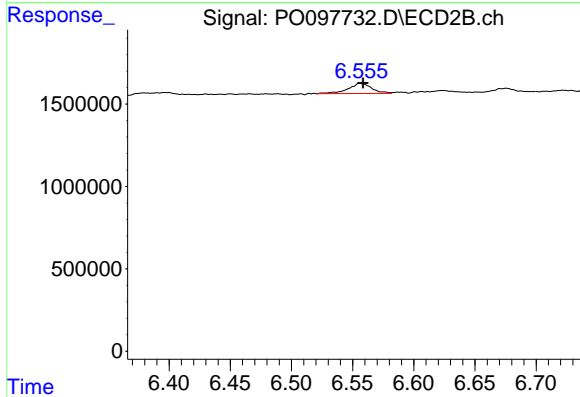
R.T.: 6.397 min
 Delta R.T.: -0.006 min
 Response: 331412
 Conc: 7.83 ng/ml



#33 AR-1260-3

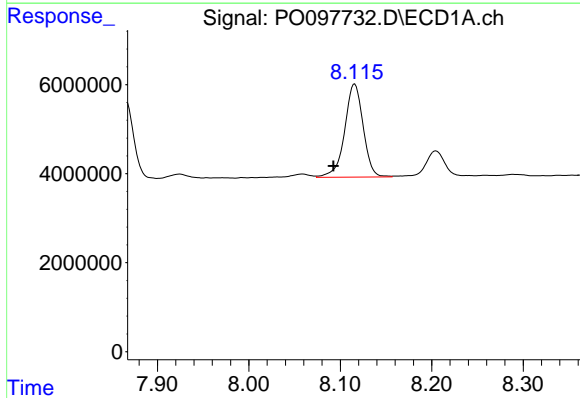
R.T.: 7.866 min
 Delta R.T.: 0.002 min
 Response: 22581377
 Conc: 213.64 ng/ml

Instrument :
 ECD_O
 ClientSampleId :
 AR1268CCC500



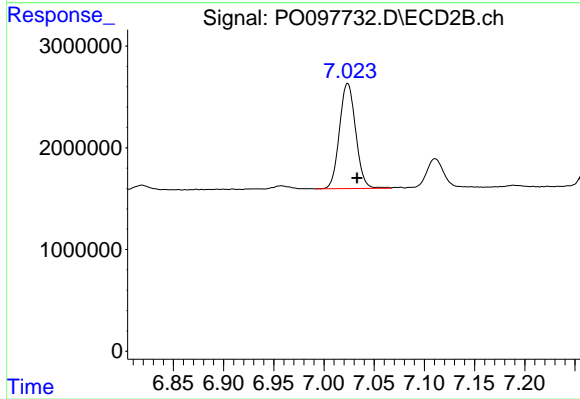
#33 AR-1260-3

R.T.: 6.556 min
 Delta R.T.: -0.002 min
 Response: 805303
 Conc: 19.24 ng/ml



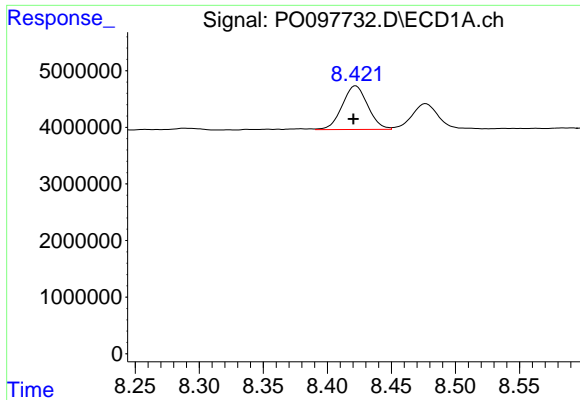
#34 AR-1260-4

R.T.: 8.116 min
 Delta R.T.: 0.023 min
 Response: 29433093
 Conc: 260.18 ng/ml



#34 AR-1260-4

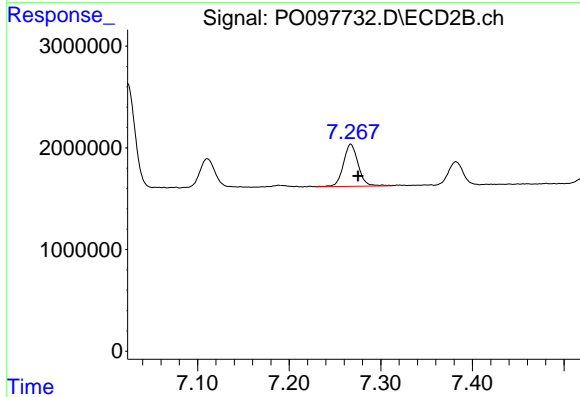
R.T.: 7.024 min
 Delta R.T.: -0.009 min
 Response: 11652912
 Conc: 360.29 ng/ml



#35 AR-1260-5

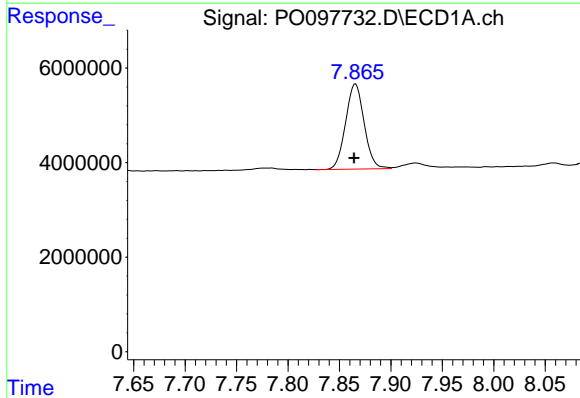
R.T.: 8.422 min
 Delta R.T.: 0.002 min
 Response: 10681537
 Conc: 56.82 ng/ml

Instrument :
 ECD_O
 ClientSampleId :
 AR1268CCC500



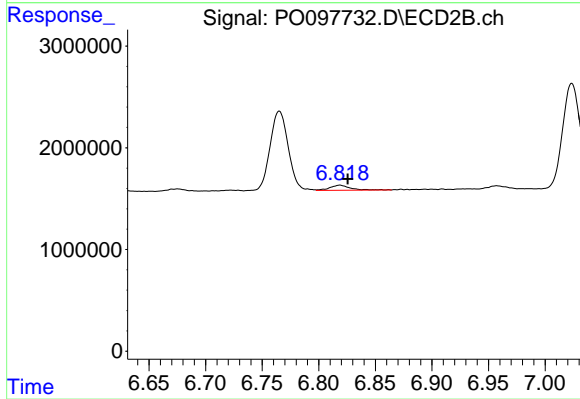
#35 AR-1260-5

R.T.: 7.267 min
 Delta R.T.: -0.008 min
 Response: 4678312
 Conc: 70.85 ng/ml



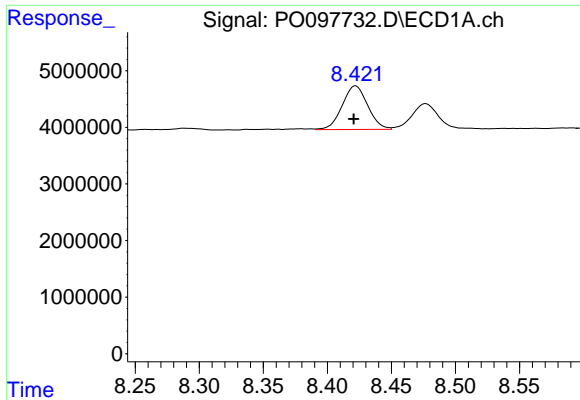
#36 AR-1262-1

R.T.: 7.866 min
 Delta R.T.: 0.001 min
 Response: 22581377
 Conc: 150.06 ng/ml



#36 AR-1262-1

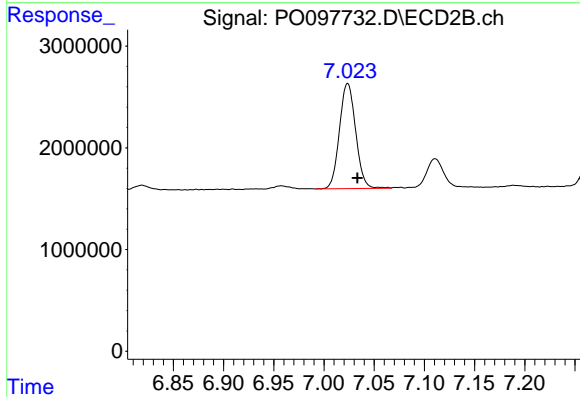
R.T.: 6.819 min
 Delta R.T.: -0.007 min
 Response: 627753
 Conc: 31.28 ng/ml



#37 AR-1262-2

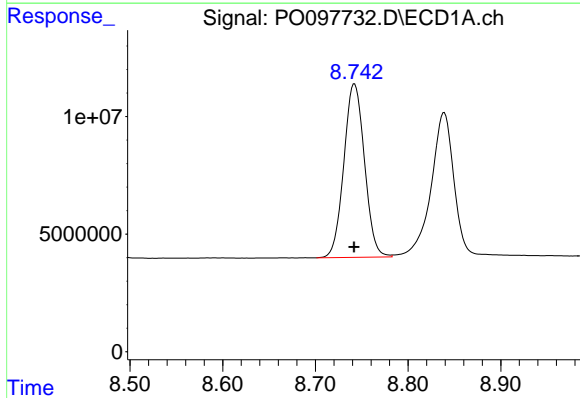
R.T.: 8.422 min
 Delta R.T.: 0.002 min
 Response: 10681537
 Conc: 48.78 ng/ml

Instrument :
 ECD_O
 ClientSampleId :
 AR1268CCC500



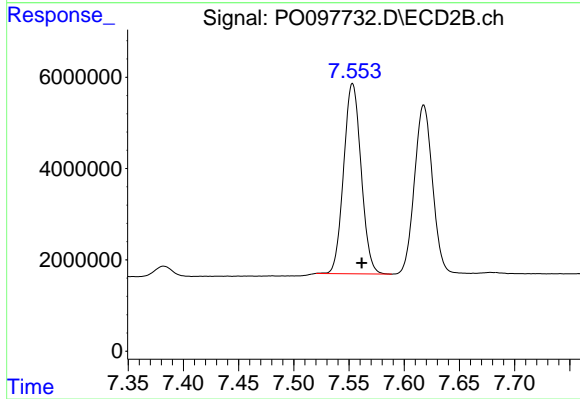
#37 AR-1262-2

R.T.: 7.024 min
 Delta R.T.: -0.010 min
 Response: 11652912
 Conc: 266.71 ng/ml



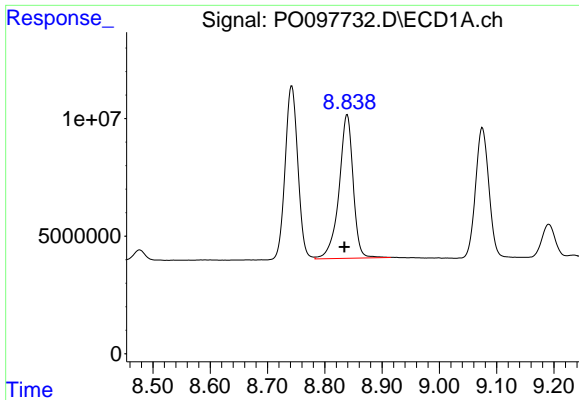
#38 AR-1262-3

R.T.: 8.742 min
 Delta R.T.: 0.000 min
 Response: 114101437
 Conc: 735.97 ng/ml



#38 AR-1262-3

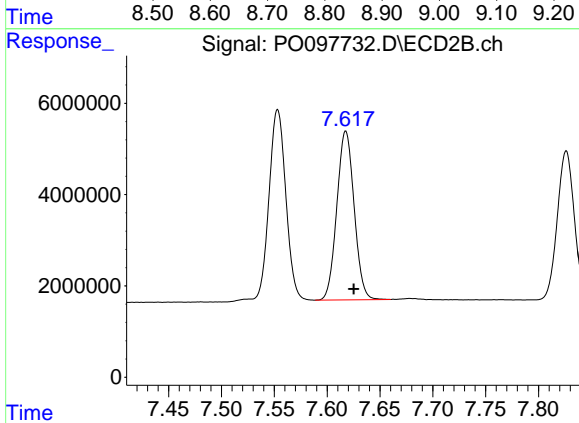
R.T.: 7.553 min
 Delta R.T.: -0.008 min
 Response: 45812481
 Conc: 1469.99 ng/ml



#39 AR-1262-4

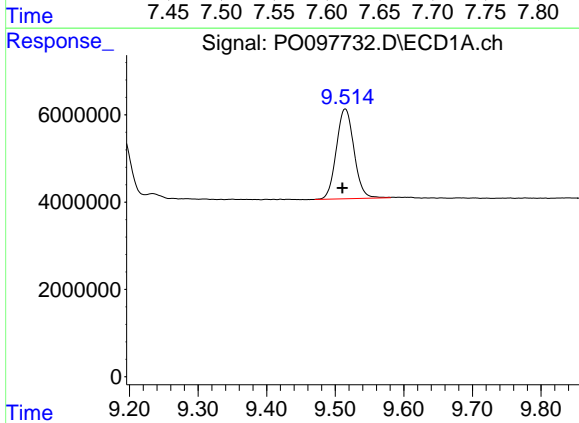
R.T.: 8.839 min
 Delta R.T.: 0.005 min
 Response: 104648130
 Conc: 839.47 ng/ml

Instrument :
 ECD_O
 ClientSampleId :
 AR1268CCC500



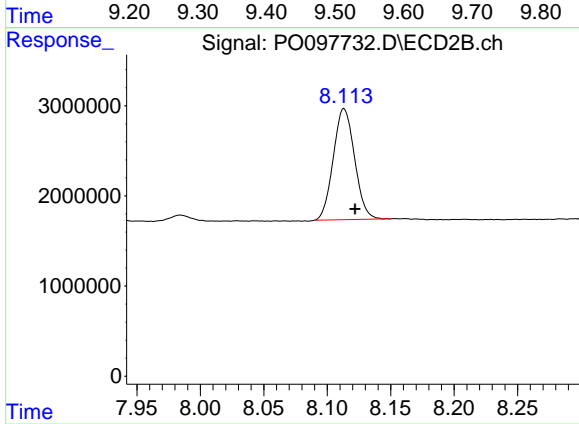
#39 AR-1262-4

R.T.: 7.618 min
 Delta R.T.: -0.007 min
 Response: 41972497
 Conc: 746.19 ng/ml



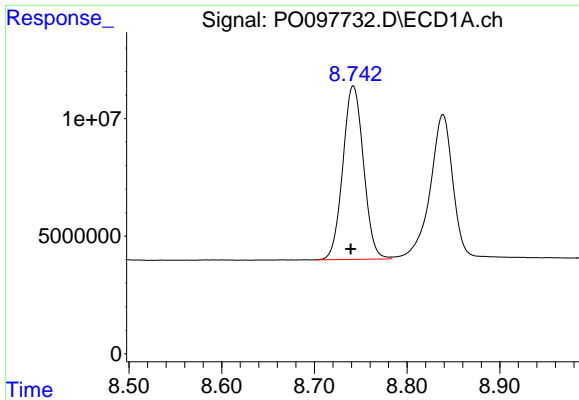
#40 AR-1262-5

R.T.: 9.515 min
 Delta R.T.: 0.004 min
 Response: 36806483
 Conc: 535.21 ng/ml



#40 AR-1262-5

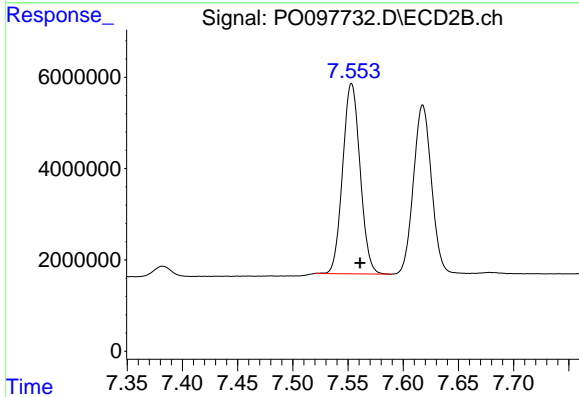
R.T.: 8.113 min
 Delta R.T.: -0.009 min
 Response: 14433714
 Conc: 613.54 ng/ml



#41 AR-1268-1

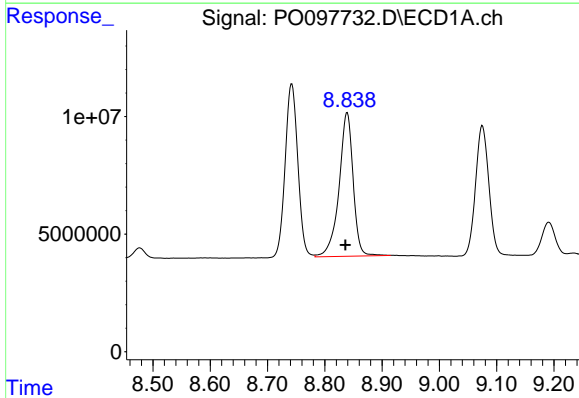
R.T.: 8.742 min
 Delta R.T.: 0.003 min
 Response: 114101437
 Conc: 401.75 ng/ml

Instrument :
 ECD_O
 ClientSampleId :
 AR1268CCC500



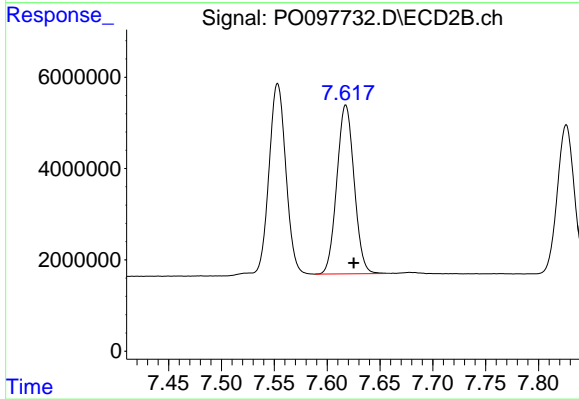
#41 AR-1268-1

R.T.: 7.553 min
 Delta R.T.: -0.008 min
 Response: 45812481
 Conc: 478.60 ng/ml



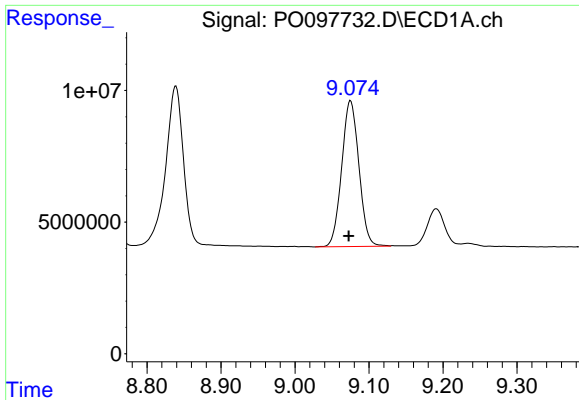
#42 AR-1268-2

R.T.: 8.839 min
 Delta R.T.: 0.003 min
 Response: 104648130
 Conc: 411.88 ng/ml



#42 AR-1268-2

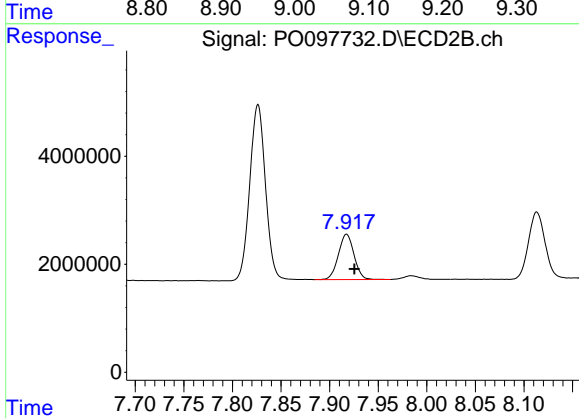
R.T.: 7.618 min
 Delta R.T.: -0.008 min
 Response: 41972497
 Conc: 506.33 ng/ml



#43 AR-1268-3

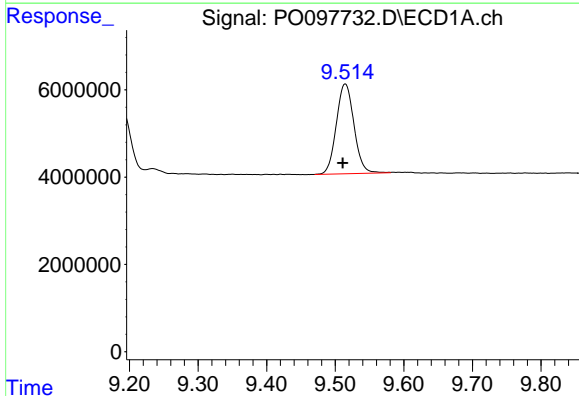
R.T.: 9.075 min
 Delta R.T.: 0.002 min
 Response: 89535278
 Conc: 396.98 ng/ml

Instrument :
 ECD_O
 ClientSampleId :
 AR1268CCC500



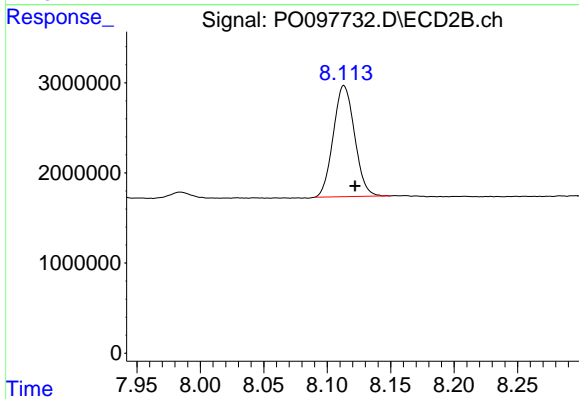
#43 AR-1268-3

R.T.: 7.917 min
 Delta R.T.: -0.008 min
 Response: 9411027
 Conc: 474.97 ng/ml



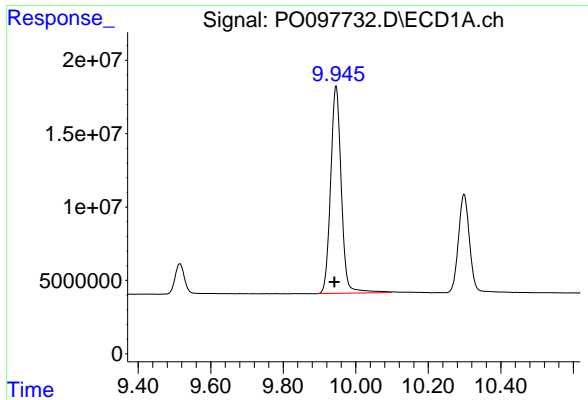
#44 AR-1268-4

R.T.: 9.515 min
 Delta R.T.: 0.004 min
 Response: 36806483
 Conc: 478.20 ng/ml



#44 AR-1268-4

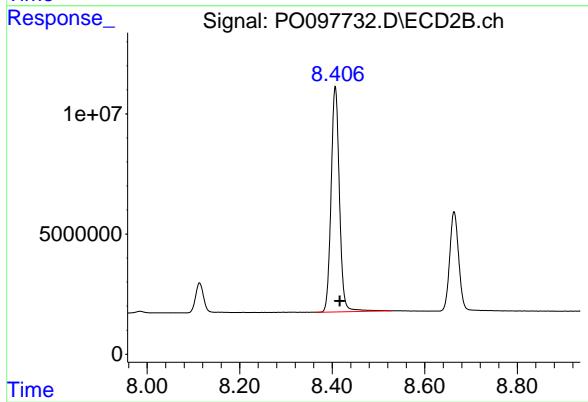
R.T.: 8.113 min
 Delta R.T.: -0.009 min
 Response: 14433714
 Conc: 558.53 ng/ml



#45 AR-1268-5

R.T.: 9.946 min
Delta R.T.: 0.004 min
Response: 288912190
Conc: 418.38 ng/ml

Instrument :
ECD_O
ClientSampleId :
AR1268CCC500



#45 AR-1268-5

R.T.: 8.407 min
Delta R.T.: -0.010 min
Response: 117494031
Conc: 515.40 ng/ml