

Data Path : Z:\pestpcbsrv\HPCHEM1\ECD\_0\Data\P0090523\  
 Data File : P0097734.D  
 Signal(s) : Signal #1: ECD1A.ch Signal #2: ECD2B.ch  
 Acq On : 05 Sep 2023 21:24  
 Operator : YP/AJ  
 Sample : PB155318BL  
 Misc :  
 ALS Vial : 28 Sample Multiplier: 1

Instrument :  
 ECD\_0  
 ClientSampleId :  
 PB155318BL

Integration File signal 1: autoint1.e  
 Integration File signal 2: autoint2.e  
 Quant Time: Sep 06 02:02:28 2023  
 Quant Method : Z:\pestpcbsrv\HPCHEM1\ECD\_0\methods\P0082823.M  
 Quant Title : GC EXTRACTABLES  
 QLast Update : Tue Aug 29 10:29:21 2023  
 Response via : Initial Calibration  
 Integrator: ChemStation

Volume Inj. : 2 µl  
 Signal #1 Phase : ZB-MR1 Signal #2 Phase: ZB-MR2  
 Signal #1 Info : 30Mx0.32mmx 0.50µ Signal #2 Info : 30M x 0.32mm x 0.25µm

Compound	RT#1	RT#2	Resp#1	Resp#2	ng/ml	ng/ml
-----						
System Monitoring Compounds						
1) SA Tetrachlo...	4.446	3.626	73988333	16679408	22.168	24.724
2) SA Decachlor...	10.299	8.665	44204147	16715882	24.085	29.120

Target Compounds

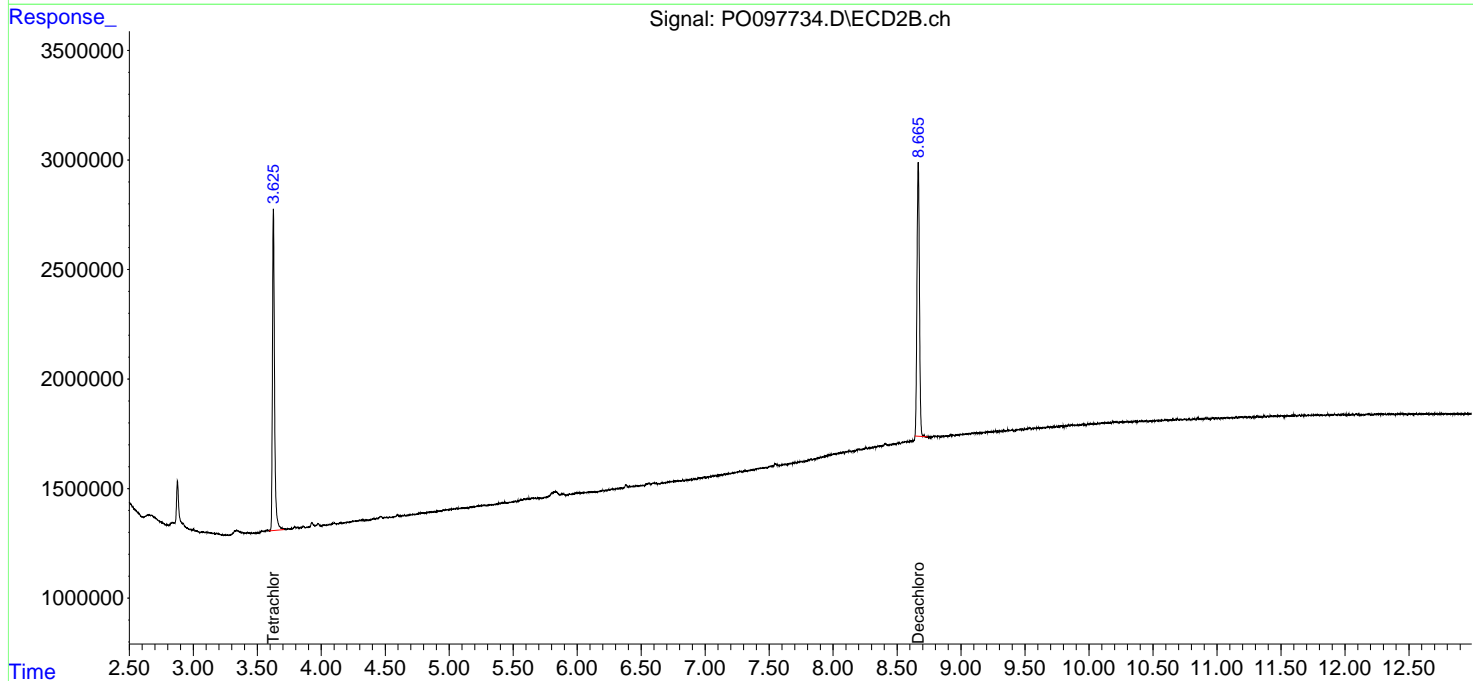
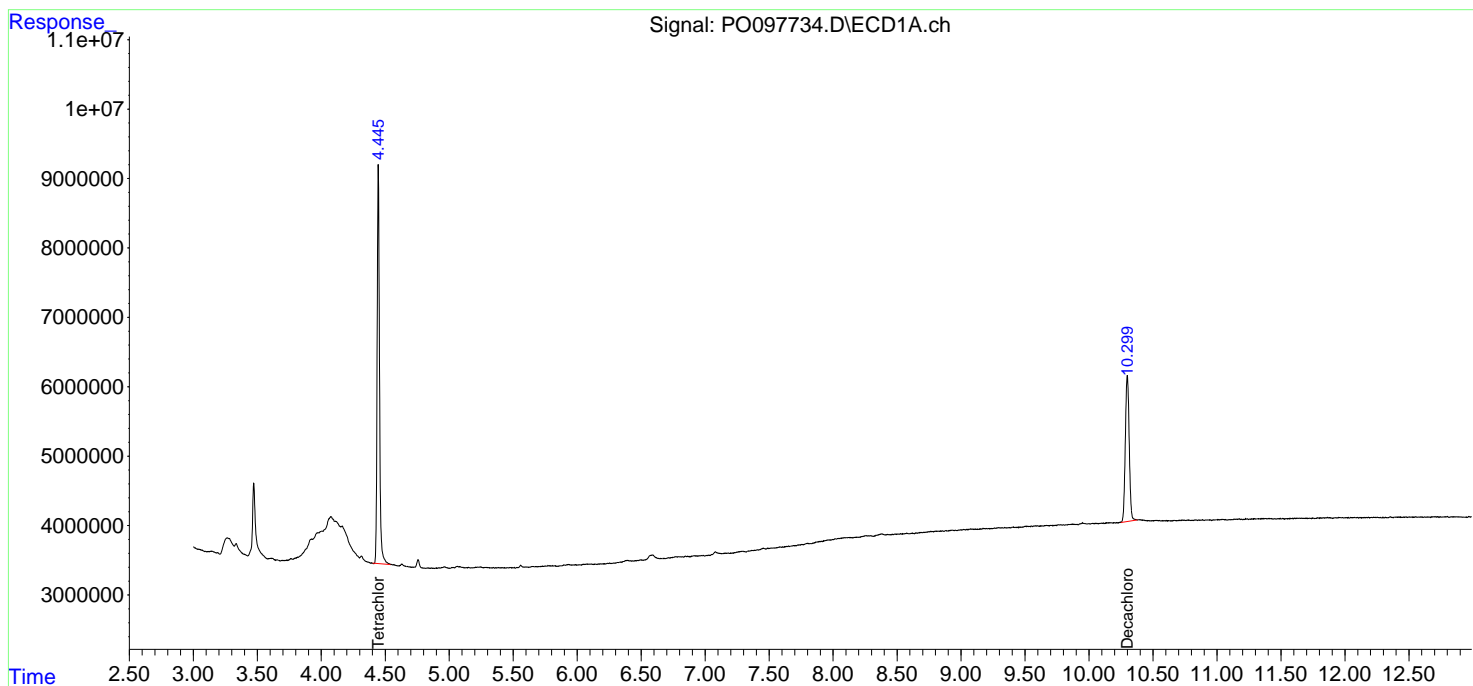
(f)=RT Delta > 1/2 Window (#)=Amounts differ by > 25% (m)=manual int.

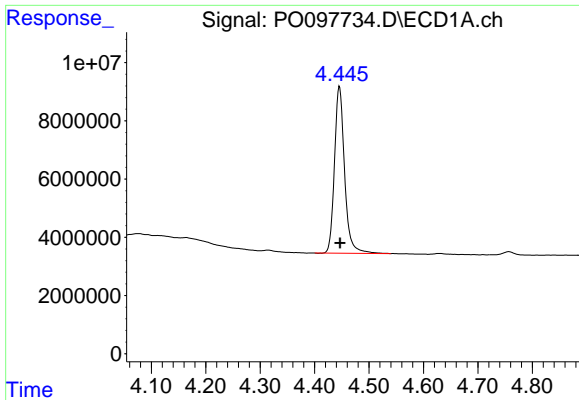
Data Path : Z:\pestpcbsrv\HPCHEM1\ECD\_O\Data\P0090523\  
 Data File : P0097734.D  
 Signal(s) : Signal #1: ECD1A.ch Signal #2: ECD2B.ch  
 Acq On : 05 Sep 2023 21:24  
 Operator : YP/AJ  
 Sample : PB155318BL  
 Misc :  
 ALS Vial : 28 Sample Multiplier: 1

Instrument :  
 ECD\_O  
 ClientSampleId :  
 PB155318BL

Integration File signal 1: autoint1.e  
 Integration File signal 2: autoint2.e  
 Quant Time: Sep 06 02:02:28 2023  
 Quant Method : Z:\pestpcbsrv\HPCHEM1\ECD\_O\methods\P0082823.M  
 Quant Title : GC EXTRACTABLES  
 QLast Update : Tue Aug 29 10:29:21 2023  
 Response via : Initial Calibration  
 Integrator: ChemStation

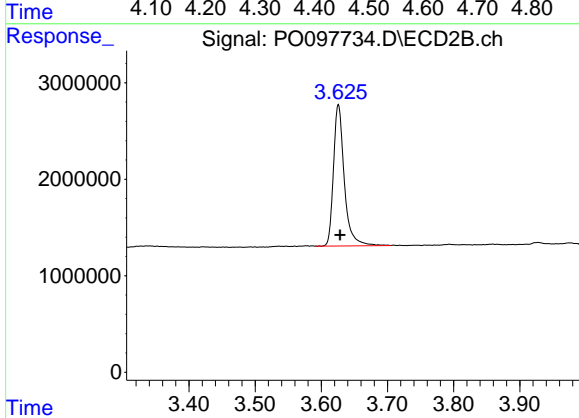
Volume Inj. : 2 µl  
 Signal #1 Phase : ZB-MR1 Signal #2 Phase: ZB-MR2  
 Signal #1 Info : 30Mx0.32mmx 0.50µ Signal #2 Info : 30M x 0.32mm x 0.25µm



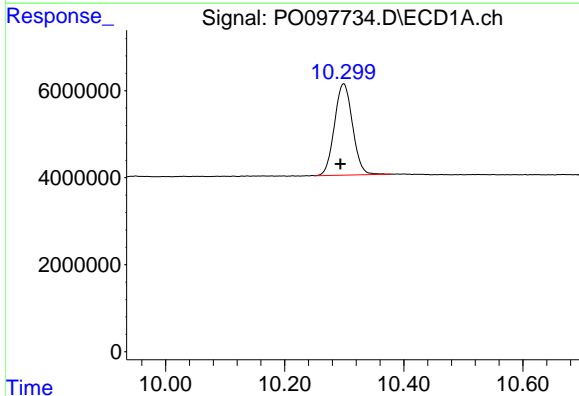


#1 Tetrachloro-m-xylene  
 R.T.: 4.446 min  
 Delta R.T.: -0.001 min  
 Response: 73988333  
 Conc: 22.17 ng/ml

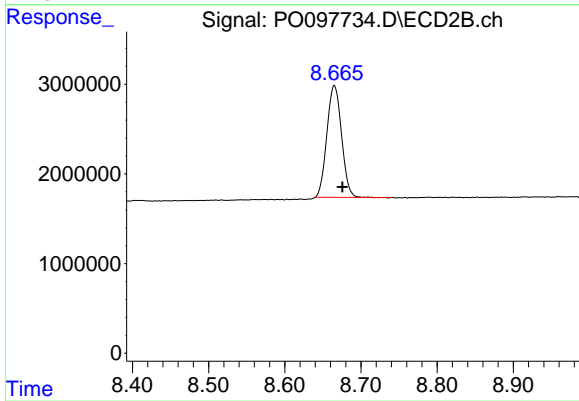
Instrument :  
 ECD\_O  
 ClientSampleId :  
 PB155318BL



#1 Tetrachloro-m-xylene  
 R.T.: 3.626 min  
 Delta R.T.: -0.002 min  
 Response: 16679408  
 Conc: 24.72 ng/ml



#2 Decachlorobiphenyl  
 R.T.: 10.299 min  
 Delta R.T.: 0.006 min  
 Response: 44204147  
 Conc: 24.08 ng/ml



#2 Decachlorobiphenyl  
 R.T.: 8.665 min  
 Delta R.T.: -0.011 min  
 Response: 16715882  
 Conc: 29.12 ng/ml