

Data Path : Z:\pestpcbsrv\HPCHEM1\ECD_0\Data\P0090524\
 Data File : P0106192.D
 Signal(s) : Signal #1: ECD1A.ch Signal #2: ECD2B.ch
 Acq On : 05 Sep 2024 17:42
 Operator : YP/AJ
 Sample : P3840-10
 Misc :
 ALS Vial : 18 Sample Multiplier: 1

Instrument :
 ECD_0
 ClientSampleId :
 111-D

Integration File signal 1: autoint1.e
 Integration File signal 2: autoint2.e
 Quant Time: Sep 06 01:30:45 2024
 Quant Method : Z:\pestpcbsrv\HPCHEM1\ECD_0\methods\P0082624.M
 Quant Title : GC EXTRACTABLES
 QLast Update : Tue Aug 27 06:50:58 2024
 Response via : Initial Calibration
 Integrator: ChemStation

Volume Inj. : 2 µl
 Signal #1 Phase : ZB-MR1 Signal #2 Phase: ZB-MR2
 Signal #1 Info : 30Mx0.32mmx 0.50µ Signal #2 Info : 30M x 0.32mm x 0.25µm

Compound	RT#1	RT#2	Resp#1	Resp#2	ng/ml	ng/ml
System Monitoring Compounds						
1) SA Tetrachlo...	4.452	3.717	149.7E6	57510949	16.414	21.287 #
2) SA Decachlor...	10.191	8.747	115.8E6	48063113	21.339	22.017
Target Compounds						
3) L1 AR-1016-1	5.615	4.807	140.3E6	43947387	443.882	459.695
4) L1 AR-1016-2	5.638	4.826	182.8E6	56494839	415.938	445.175
5) L1 AR-1016-3	5.701	5.003	116.3E6	32466679	432.662	464.109
6) L1 AR-1016-4	5.799	5.044	89027486	20955549	404.421	389.687
7) L1 AR-1016-5	6.092	5.258	90816939	29024235	426.866	421.796
8) L2 AR-1221-1	4.651	3.929	12550735	5575516	114.014	182.724 #
9) L2 AR-1221-2	4.742	4.017	27225399	5980785	323.884	261.684
10) L2 AR-1221-3	4.820	4.093	85322595	27210548	352.503	381.260
11) L3 AR-1232-1	4.820	4.093	85322595	27210548	420.844	463.202
12) L3 AR-1232-2	5.349	4.826	117.4E6	56494839	1080.999	1000.396
13) L3 AR-1232-3	5.638	5.003	182.8E6	32466679	926.944	1050.770
14) L3 AR-1232-4	5.799	5.087	89027486	24613739	904.228	910.972
15) L3 AR-1232-5	5.888	5.258	60941293	29024235	800.494	981.644
16) L4 AR-1242-1	5.615	4.826	140.3E6	56494839	579.891	794.347 #
17) L4 AR-1242-2	5.638	4.858	182.8E6	2813511	550.520	30.027 #
18) L4 AR-1242-3	5.701	5.044	116.3E6	20955549	566.250	410.928 #
19) L4 AR-1242-4	5.799	5.118	89027486	7956079	530.660	155.185 #
20) L4 AR-1242-5	6.533	5.652	67761176	19366120	397.735	299.633
21) L5 AR-1248-1	5.615	4.807	140.3E6	43947387	746.242	784.648
22) L5 AR-1248-2	5.888	5.044	60941293	20955549	235.851	281.501
23) L5 AR-1248-3	6.092	5.087	90816939	24613739	317.963	313.377
24) L5 AR-1248-4	6.495	5.258	66135515	29024235	209.760	311.712 #
25) L5 AR-1248-5	6.533	5.652	67761176	19366120	223.237	211.338
26) L6 AR-1254-1	6.467	5.610	54300508	27220560	175.896	201.749
27) L6 AR-1254-2	6.690	5.758	58558485	6690499	127.101	55.124 #
28) L6 AR-1254-3	7.052	6.163	19367356	7060475	40.997	36.629
29) L6 AR-1254-4	7.336	6.390	10966507	2490728	31.481	20.538 #
30) L6 AR-1254-5	7.755	6.807	5373841	2029953	14.717	11.481
31) L7 AR-1260-1	7.215	6.310	5515643	4425366	15.370	33.591 #
32) L7 AR-1260-2	7.473	6.480	3752024	2173869	8.932	13.246 #
33) L7 AR-1260-3	7.831	6.636	3892344	3872587	14.554	22.946 #
34) L7 AR-1260-4	8.026	7.106	11303492	936752	36.461	8.453 #
35) L7 AR-1260-5	8.374	7.346	3049686	950871	5.482	3.504 #
36) L8 AR-1262-1	7.755	6.807	5373841	2029953	18.503	21.057
37) L8 AR-1262-2	8.374	7.106	3049686	936752	4.241	6.030 #
38) L8 AR-1262-3	8.692	7.630	988785	201721	2.052	1.773
39) L8 AR-1262-4	8.769	7.694	1740221	679617	4.852	2.852 #
40) L8 AR-1262-5	9.432	8.190	235546	216146	0.916	1.972 #
41) L9 AR-1268-1	8.692	7.630	988785	201721	1.208	0.587 #

Data Path : Z:\pestpcbsrv\HPCHEM1\ECD_0\Data\P0090524\
 Data File : P0106192.D
 Signal(s) : Signal #1: ECD1A.ch Signal #2: ECD2B.ch
 Acq On : 05 Sep 2024 17:42
 Operator : YP/AJ
 Sample : P3840-10
 Misc :
 ALS Vial : 18 Sample Multiplier: 1

Instrument :
 ECD_0
 ClientSampleId :
 111-D

Integration File signal 1: autoint1.e
 Integration File signal 2: autoint2.e
 Quant Time: Sep 06 01:30:45 2024
 Quant Method : Z:\pestpcbsrv\HPCHEM1\ECD_0\methods\P0082624.M
 Quant Title : GC EXTRACTABLES
 QLast Update : Tue Aug 27 06:50:58 2024
 Response via : Initial Calibration
 Integrator: ChemStation

Volume Inj. : 2 µl
 Signal #1 Phase : ZB-MR1 Signal #2 Phase: ZB-MR2
 Signal #1 Info : 30Mx0.32mmx 0.50µ Signal #2 Info : 30M x 0.32mm x 0.25µm

	Compound	RT#1	RT#2	Resp#1	Resp#2	ng/ml	ng/ml
42)	L9 AR-1268-2	8.769	7.694	1740221	679617	2.375	2.110
43)	L9 AR-1268-3	9.046	7.887	1628070	88327	2.647	0.329 #
44)	L9 AR-1268-4	9.432	8.190	235546	216146	0.871	1.908 #
45)	L9 AR-1268-5	9.849	8.488	2215157	450249	1.098	0.526 #

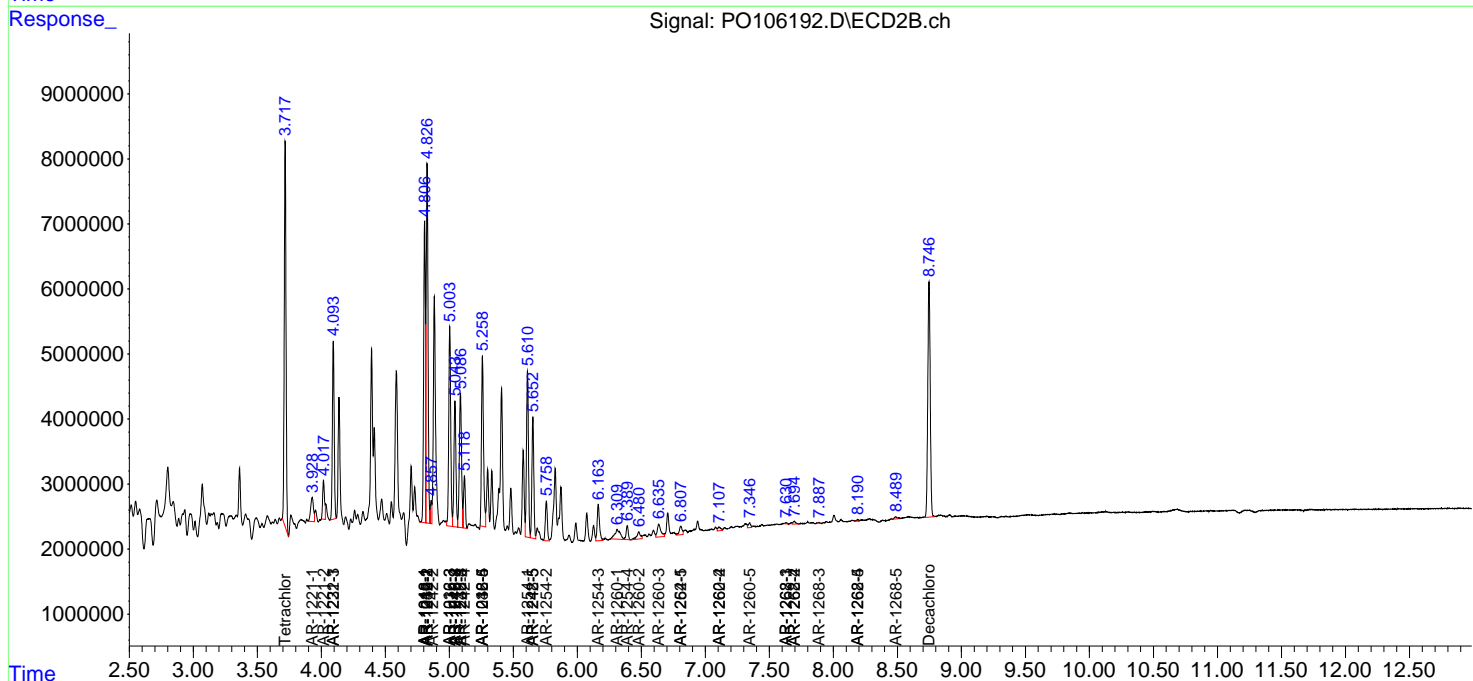
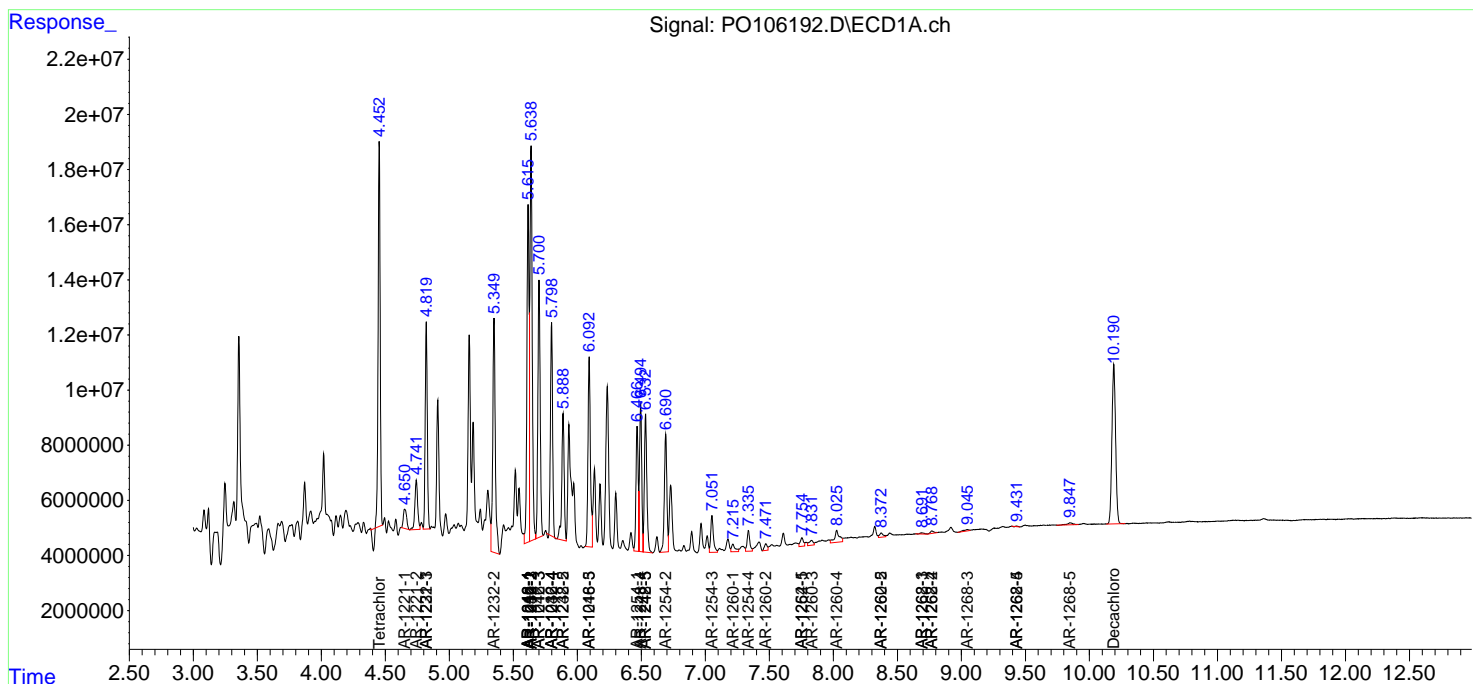
(f)=RT Delta > 1/2 Window (#)=Amounts differ by > 25% (m)=manual int.

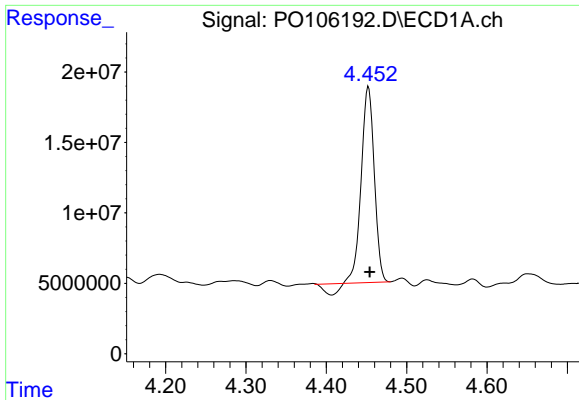
Data Path : Z:\pestpcsrv\HPCHEM1\ECD_O\Data\PO090524\
 Data File : PO106192.D
 Signal(s) : Signal #1: ECD1A.ch Signal #2: ECD2B.ch
 Acq On : 05 Sep 2024 17:42
 Operator : YP/AJ
 Sample : P3840-10
 Misc :
 ALS Vial : 18 Sample Multiplier: 1

Instrument :
 ECD_O
 ClientSampleId :
 111-D

Integration File signal 1: autoint1.e
 Integration File signal 2: autoint2.e
 Quant Time: Sep 06 01:30:45 2024
 Quant Method : Z:\pestpcsrv\HPCHEM1\ECD_O\methods\PO082624.M
 Quant Title : GC EXTRACTABLES
 QLast Update : Tue Aug 27 06:50:58 2024
 Response via : Initial Calibration
 Integrator: ChemStation

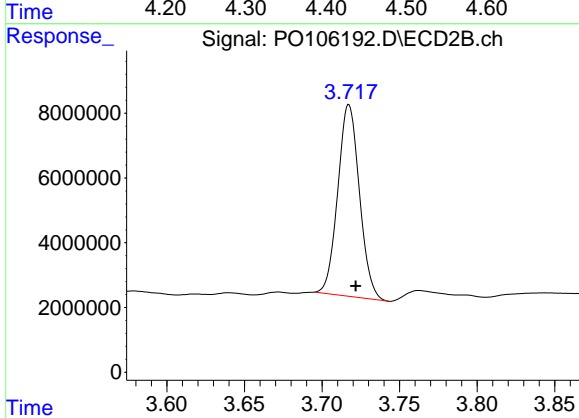
Volume Inj. : 2 µl
 Signal #1 Phase : ZB-MR1 Signal #2 Phase: ZB-MR2
 Signal #1 Info : 30Mx0.32mmx 0.50µ Signal #2 Info : 30M x 0.32mm x 0.25µm



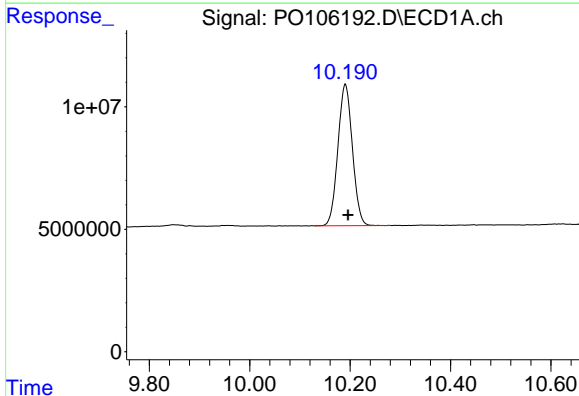


#1 Tetrachloro-m-xylene
 R.T.: 4.452 min
 Delta R.T.: -0.002 min
 Response: 149746033
 Conc: 16.41 ng/ml

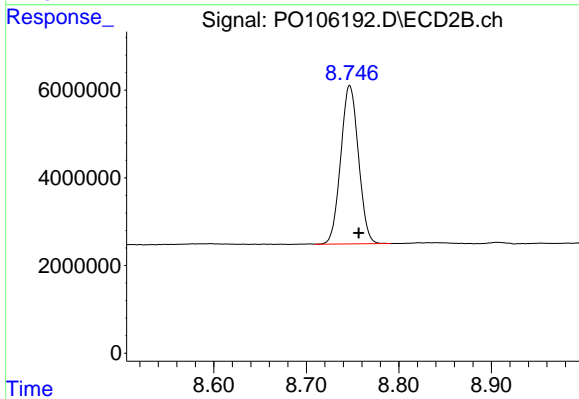
Instrument :
 ECD_O
 ClientSampleId :
 111-D



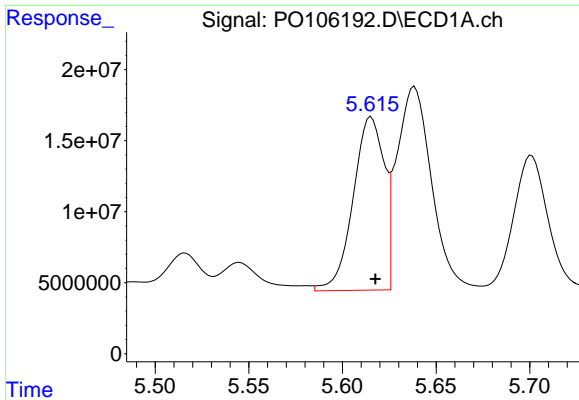
#1 Tetrachloro-m-xylene
 R.T.: 3.717 min
 Delta R.T.: -0.004 min
 Response: 57510949
 Conc: 21.29 ng/ml



#2 Decachlorobiphenyl
 R.T.: 10.191 min
 Delta R.T.: -0.005 min
 Response: 115805150
 Conc: 21.34 ng/ml



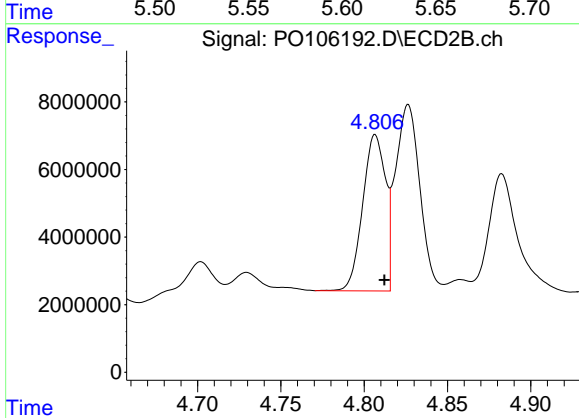
#2 Decachlorobiphenyl
 R.T.: 8.747 min
 Delta R.T.: -0.010 min
 Response: 48063113
 Conc: 22.02 ng/ml



#3 AR-1016-1

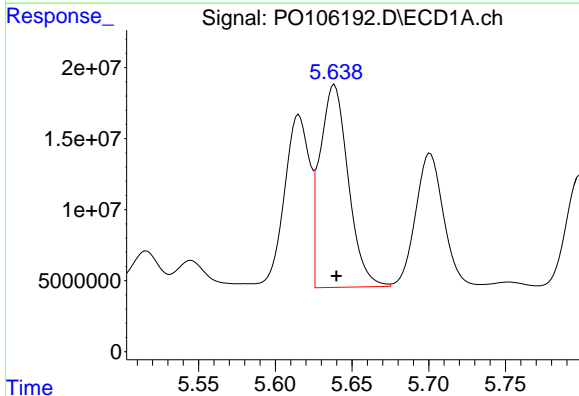
R.T.: 5.615 min
 Delta R.T.: -0.002 min
 Response: 140290183
 Conc: 443.88 ng/ml

Instrument :
 ECD_O
 ClientSampleId :
 111-D



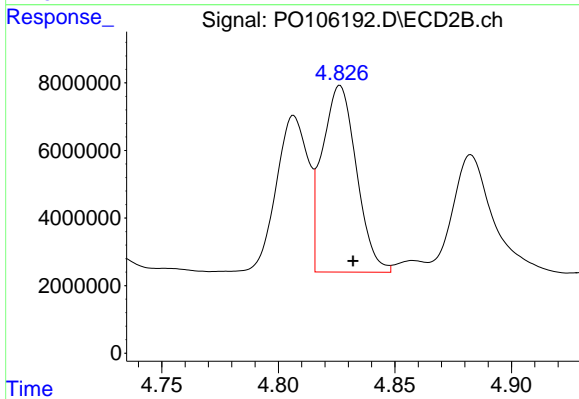
#3 AR-1016-1

R.T.: 4.807 min
 Delta R.T.: -0.005 min
 Response: 43947387
 Conc: 459.70 ng/ml



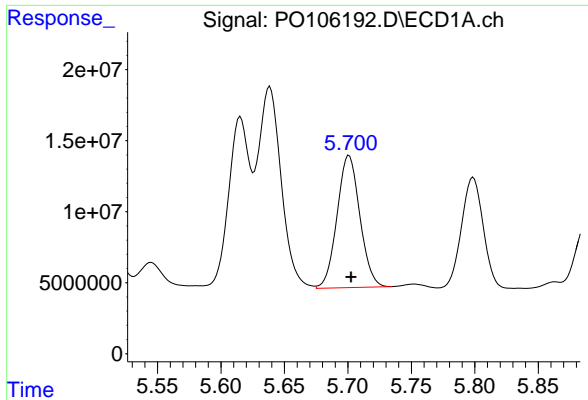
#4 AR-1016-2

R.T.: 5.638 min
 Delta R.T.: -0.001 min
 Response: 182841884
 Conc: 415.94 ng/ml



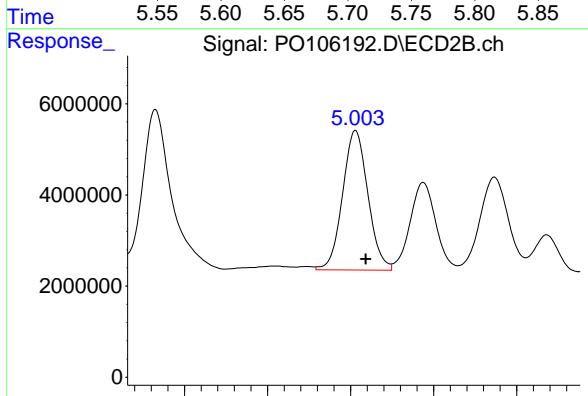
#4 AR-1016-2

R.T.: 4.826 min
 Delta R.T.: -0.006 min
 Response: 56494839
 Conc: 445.18 ng/ml

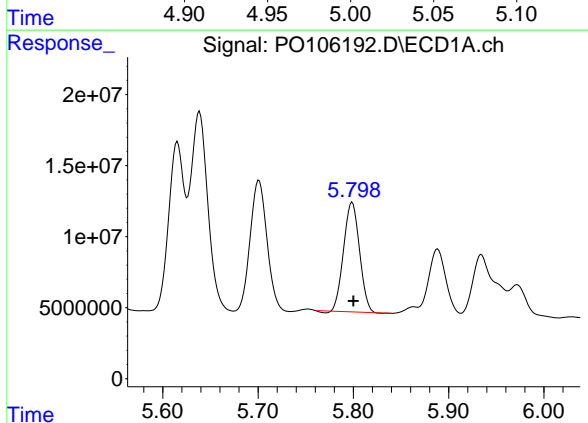


#5 AR-1016-3
 R.T.: 5.701 min
 Delta R.T.: -0.001 min
 Response: 116321152
 Conc: 432.66 ng/ml

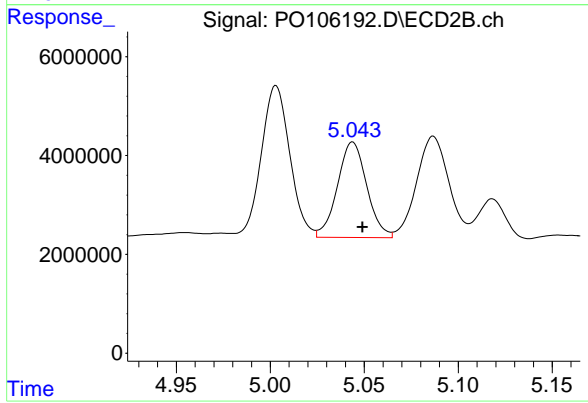
Instrument :
 ECD_O
 ClientSampleId :
 111-D



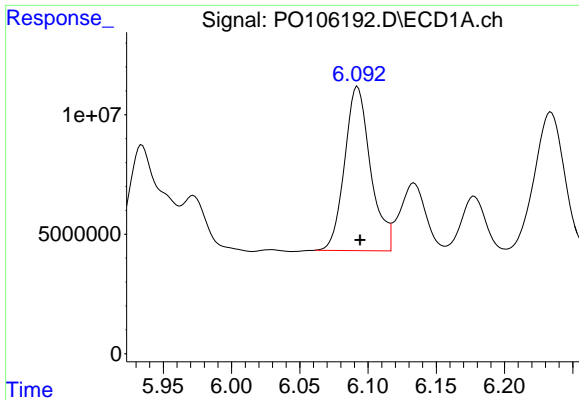
#5 AR-1016-3
 R.T.: 5.003 min
 Delta R.T.: -0.006 min
 Response: 32466679
 Conc: 464.11 ng/ml



#6 AR-1016-4
 R.T.: 5.799 min
 Delta R.T.: -0.001 min
 Response: 89027486
 Conc: 404.42 ng/ml



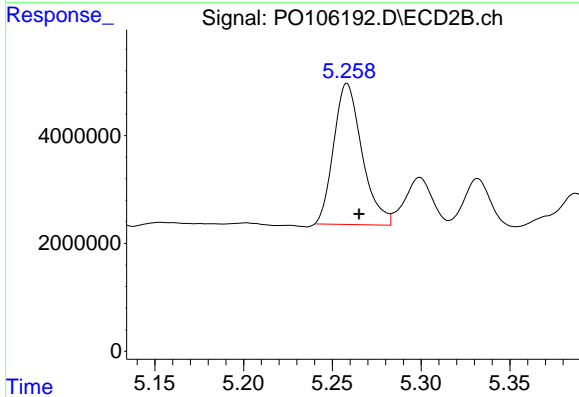
#6 AR-1016-4
 R.T.: 5.044 min
 Delta R.T.: -0.005 min
 Response: 20955549
 Conc: 389.69 ng/ml



#7 AR-1016-5

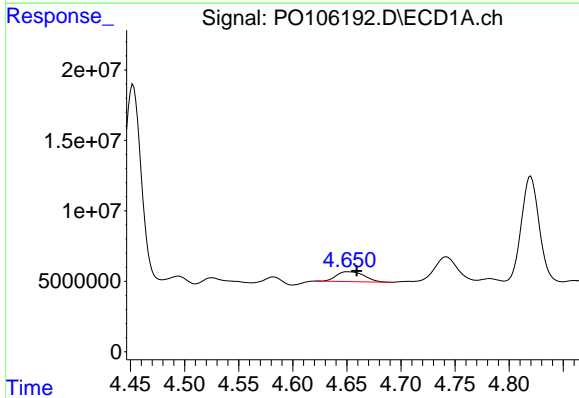
R.T.: 6.092 min
 Delta R.T.: -0.002 min
 Response: 90816939
 Conc: 426.87 ng/ml

Instrument :
 ECD_O
 ClientSampleId :
 111-D



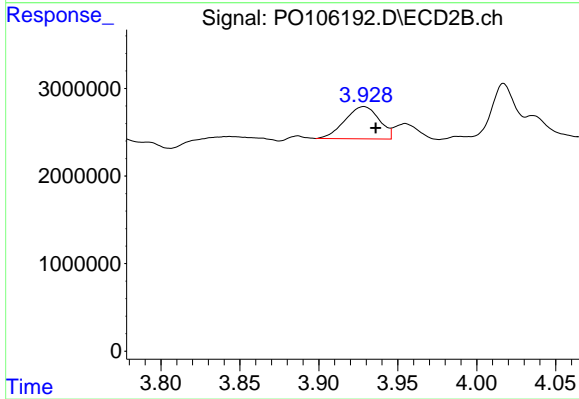
#7 AR-1016-5

R.T.: 5.258 min
 Delta R.T.: -0.007 min
 Response: 29024235
 Conc: 421.80 ng/ml



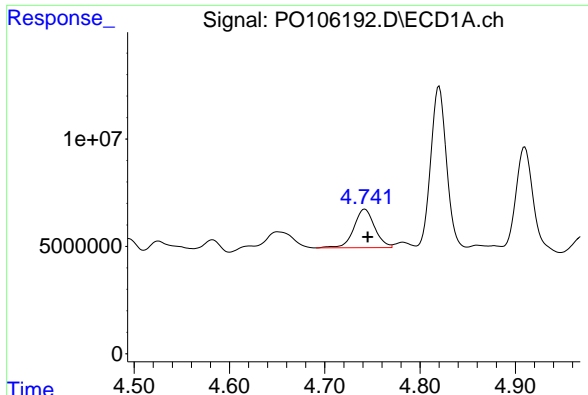
#8 AR-1221-1

R.T.: 4.651 min
 Delta R.T.: -0.008 min
 Response: 12550735
 Conc: 114.01 ng/ml



#8 AR-1221-1

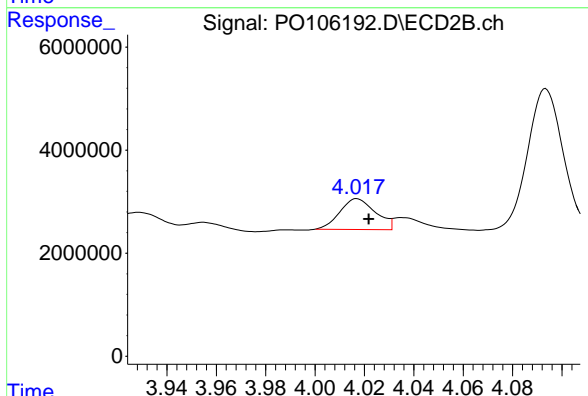
R.T.: 3.929 min
 Delta R.T.: -0.007 min
 Response: 5575516
 Conc: 182.72 ng/ml



#9 AR-1221-2

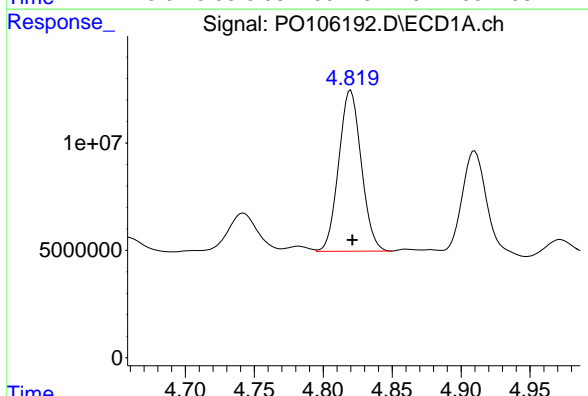
R.T.: 4.742 min
 Delta R.T.: -0.003 min
 Response: 27225399
 Conc: 323.88 ng/ml

Instrument :
 ECD_O
 ClientSampleId :
 111-D



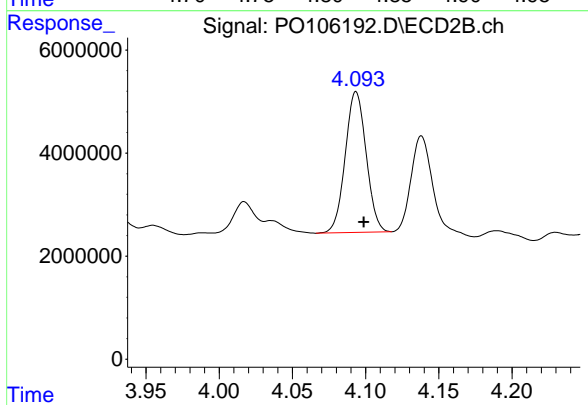
#9 AR-1221-2

R.T.: 4.017 min
 Delta R.T.: -0.005 min
 Response: 5980785
 Conc: 261.68 ng/ml



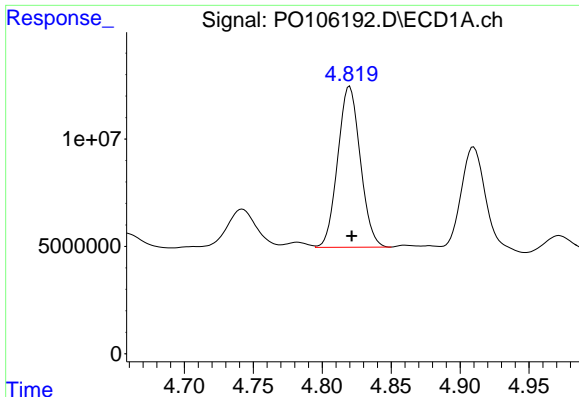
#10 AR-1221-3

R.T.: 4.820 min
 Delta R.T.: -0.001 min
 Response: 85322595
 Conc: 352.50 ng/ml



#10 AR-1221-3

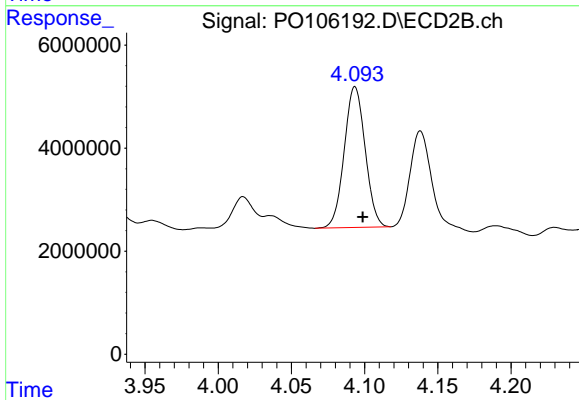
R.T.: 4.093 min
 Delta R.T.: -0.005 min
 Response: 27210548
 Conc: 381.26 ng/ml



#11 AR-1232-1

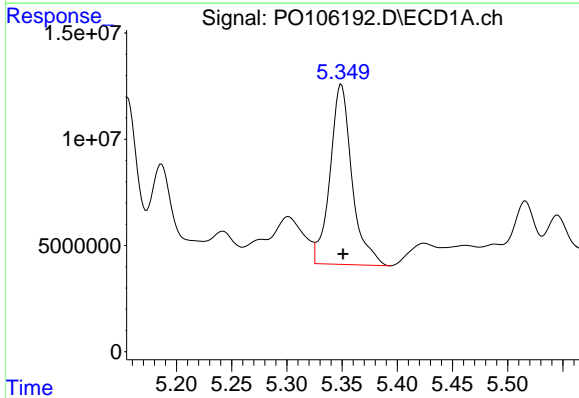
R.T.: 4.820 min
 Delta R.T.: -0.001 min
 Response: 85322595
 Conc: 420.84 ng/ml

Instrument :
 ECD_O
 ClientSampleId :
 111-D



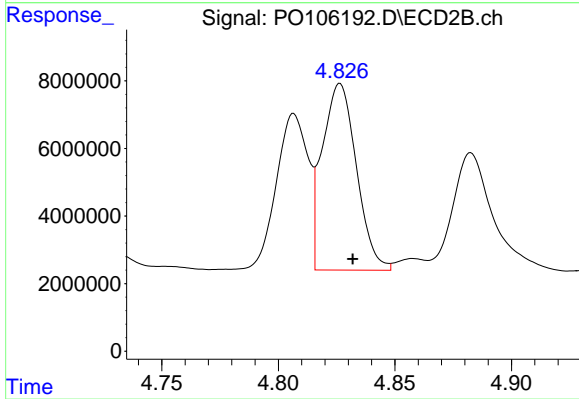
#11 AR-1232-1

R.T.: 4.093 min
 Delta R.T.: -0.005 min
 Response: 27210548
 Conc: 463.20 ng/ml



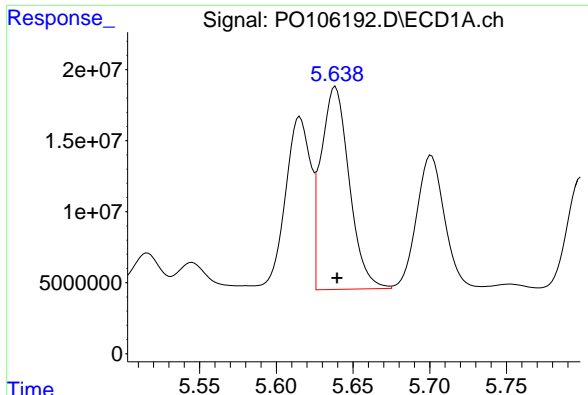
#12 AR-1232-2

R.T.: 5.349 min
 Delta R.T.: -0.001 min
 Response: 117444980
 Conc: 1081.00 ng/ml



#12 AR-1232-2

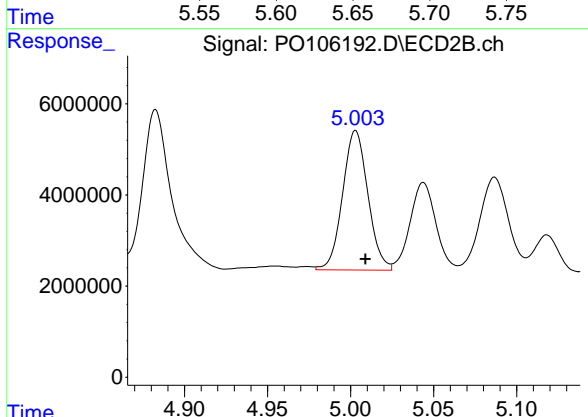
R.T.: 4.826 min
 Delta R.T.: -0.005 min
 Response: 56494839
 Conc: 1000.40 ng/ml



#13 AR-1232-3

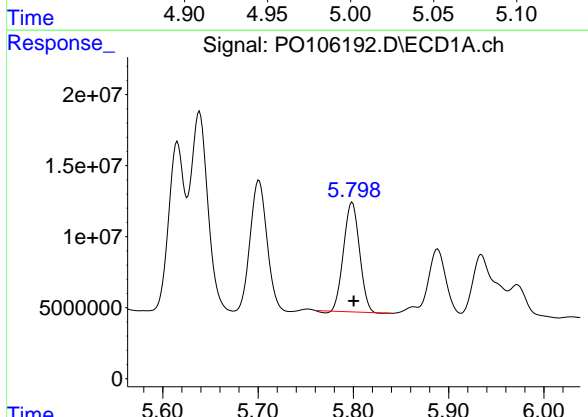
R.T.: 5.638 min
 Delta R.T.: -0.001 min
 Response: 182841884
 Conc: 926.94 ng/ml

Instrument :
 ECD_O
 ClientSampleId :
 111-D



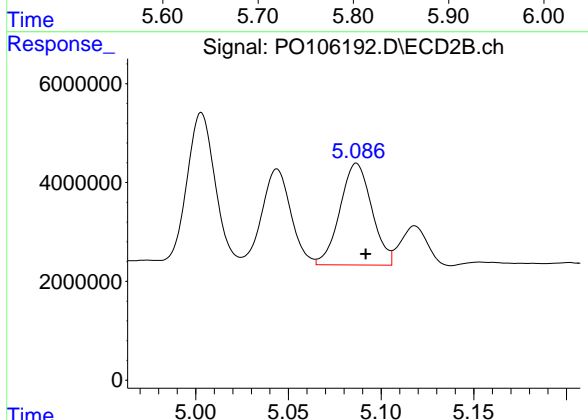
#13 AR-1232-3

R.T.: 5.003 min
 Delta R.T.: -0.006 min
 Response: 32466679
 Conc: 1050.77 ng/ml



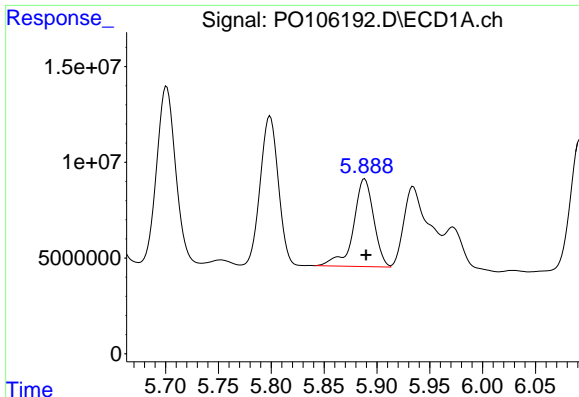
#14 AR-1232-4

R.T.: 5.799 min
 Delta R.T.: -0.002 min
 Response: 89027486
 Conc: 904.23 ng/ml



#14 AR-1232-4

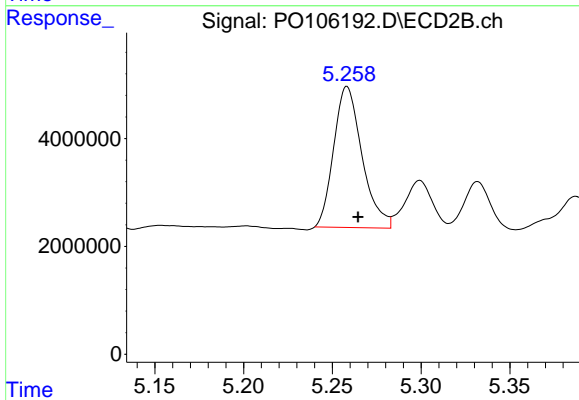
R.T.: 5.087 min
 Delta R.T.: -0.005 min
 Response: 24613739
 Conc: 910.97 ng/ml



#15 AR-1232-5

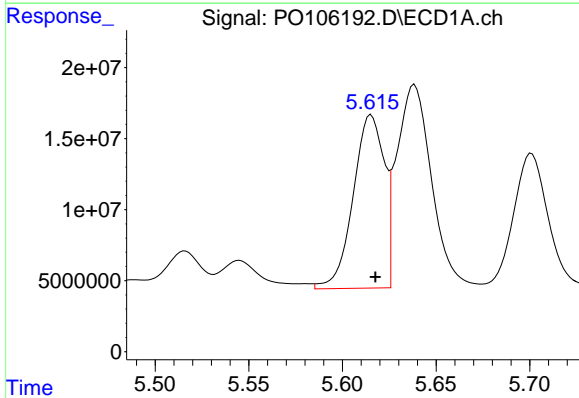
R.T.: 5.888 min
 Delta R.T.: -0.001 min
 Response: 60941293
 Conc: 800.49 ng/ml

Instrument :
 ECD_O
 ClientSampleId :
 111-D



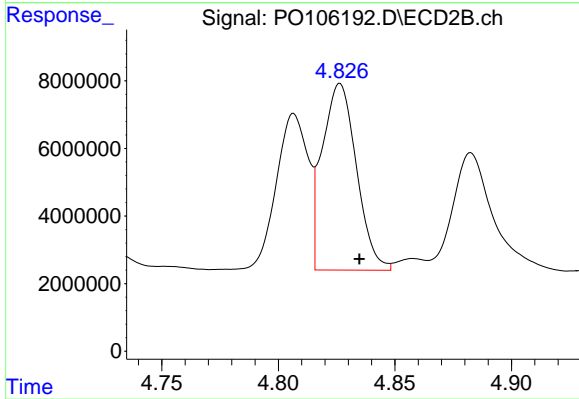
#15 AR-1232-5

R.T.: 5.258 min
 Delta R.T.: -0.006 min
 Response: 29024235
 Conc: 981.64 ng/ml



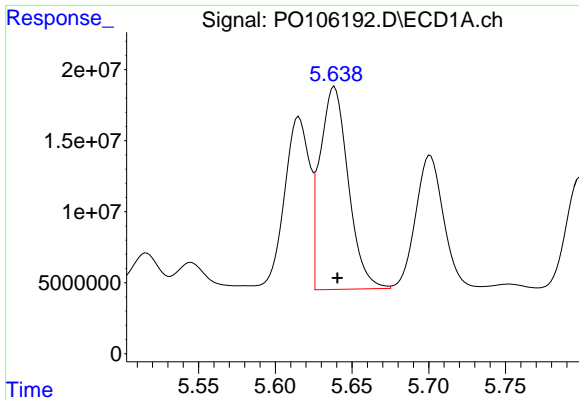
#16 AR-1242-1

R.T.: 5.615 min
 Delta R.T.: -0.002 min
 Response: 140290183
 Conc: 579.89 ng/ml



#16 AR-1242-1

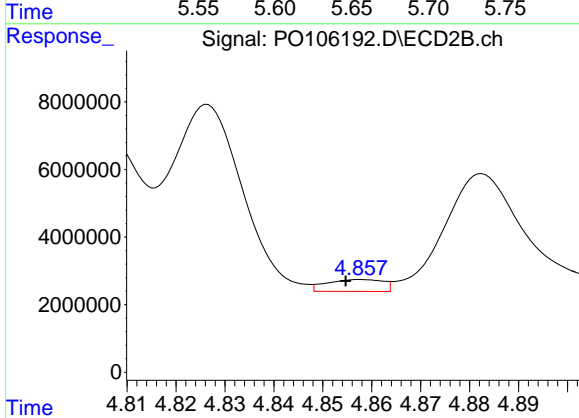
R.T.: 4.826 min
 Delta R.T.: -0.008 min
 Response: 56494839
 Conc: 794.35 ng/ml



#17 AR-1242-2

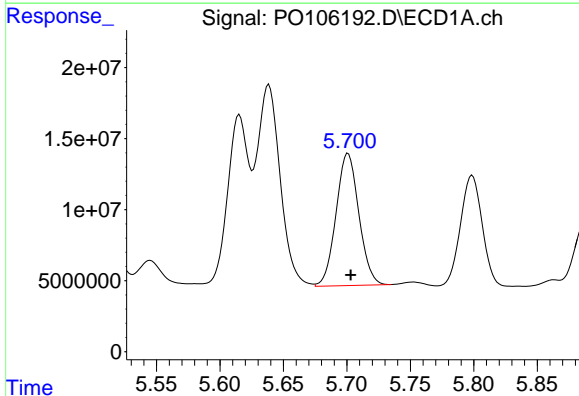
R.T.: 5.638 min
 Delta R.T.: -0.002 min
 Response: 182841884
 Conc: 550.52 ng/ml

Instrument :
 ECD_O
 ClientSampleId :
 111-D



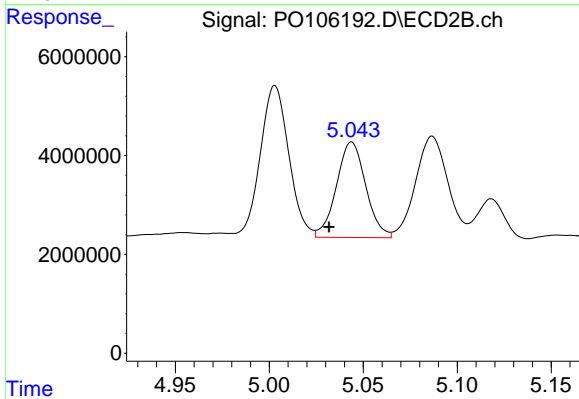
#17 AR-1242-2

R.T.: 4.858 min
 Delta R.T.: 0.003 min
 Response: 2813511
 Conc: 30.03 ng/ml



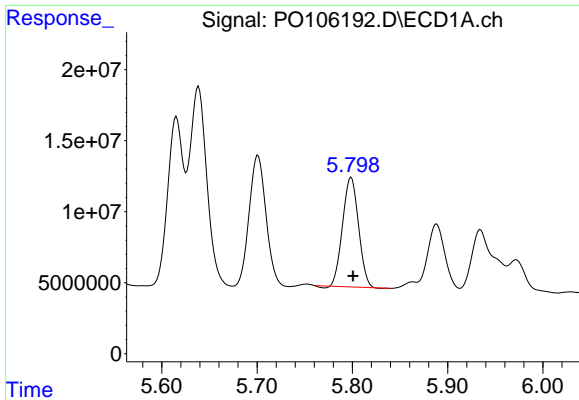
#18 AR-1242-3

R.T.: 5.701 min
 Delta R.T.: -0.002 min
 Response: 116321152
 Conc: 566.25 ng/ml



#18 AR-1242-3

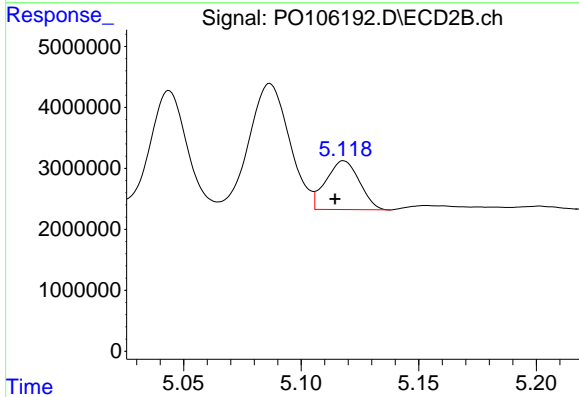
R.T.: 5.044 min
 Delta R.T.: 0.012 min
 Response: 20955549
 Conc: 410.93 ng/ml



#19 AR-1242-4

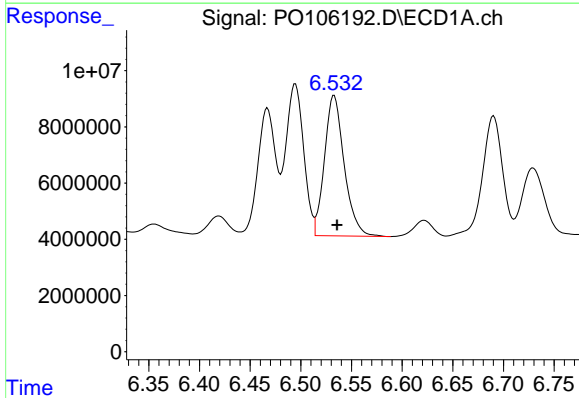
R.T.: 5.799 min
 Delta R.T.: -0.002 min
 Response: 89027486
 Conc: 530.66 ng/ml

Instrument :
 ECD_O
 ClientSampleId :
 111-D



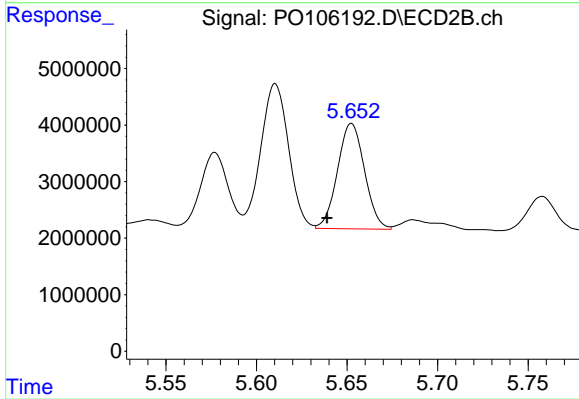
#19 AR-1242-4

R.T.: 5.118 min
 Delta R.T.: 0.004 min
 Response: 7956079
 Conc: 155.19 ng/ml



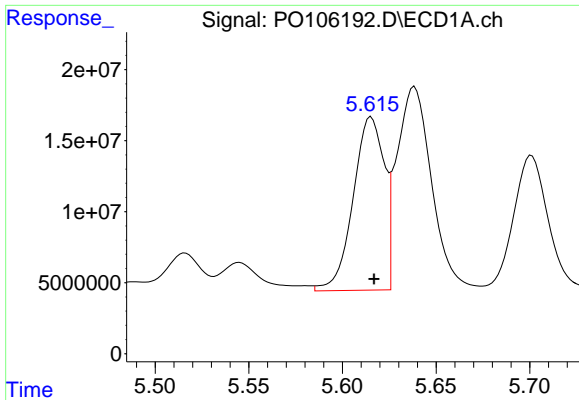
#20 AR-1242-5

R.T.: 6.533 min
 Delta R.T.: -0.003 min
 Response: 67761176
 Conc: 397.74 ng/ml



#20 AR-1242-5

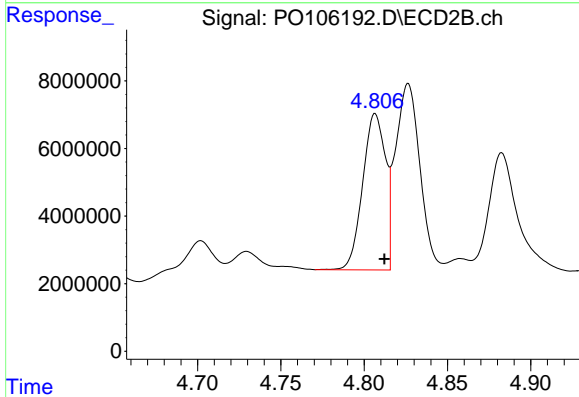
R.T.: 5.652 min
 Delta R.T.: 0.013 min
 Response: 19366120
 Conc: 299.63 ng/ml



#21 AR-1248-1

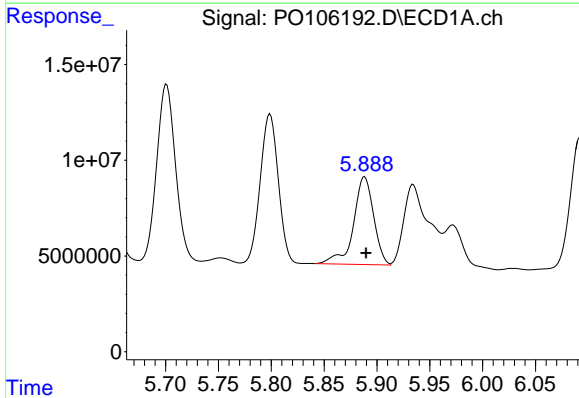
R.T.: 5.615 min
 Delta R.T.: -0.002 min
 Response: 140290183
 Conc: 746.24 ng/ml

Instrument :
 ECD_O
 ClientSampleId :
 111-D



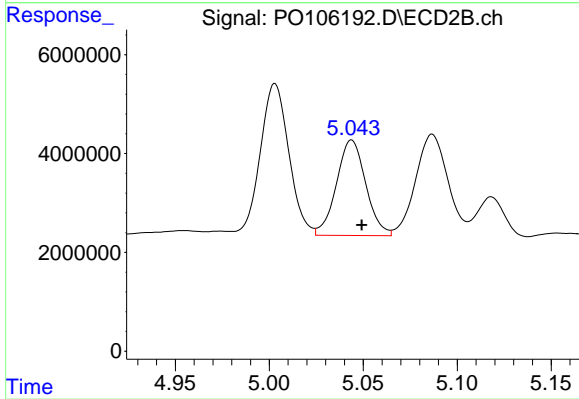
#21 AR-1248-1

R.T.: 4.807 min
 Delta R.T.: -0.005 min
 Response: 43947387
 Conc: 784.65 ng/ml



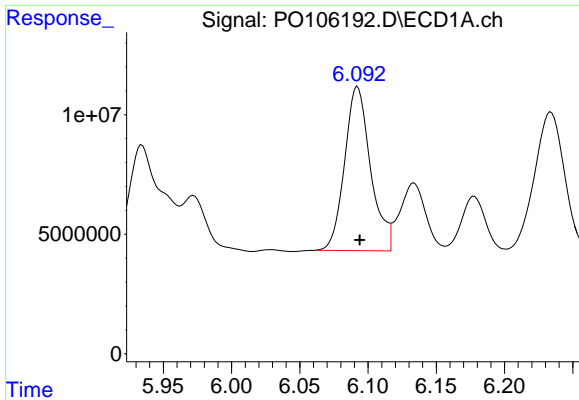
#22 AR-1248-2

R.T.: 5.888 min
 Delta R.T.: -0.001 min
 Response: 60941293
 Conc: 235.85 ng/ml



#22 AR-1248-2

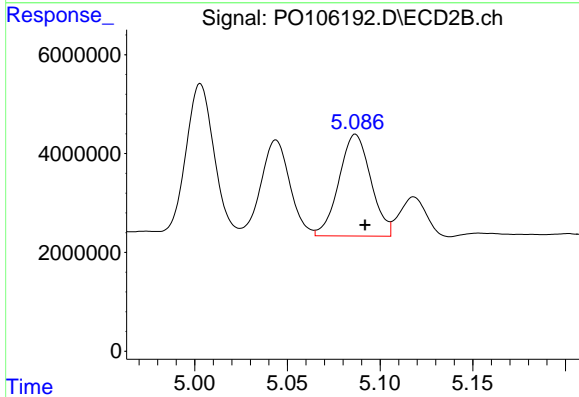
R.T.: 5.044 min
 Delta R.T.: -0.005 min
 Response: 20955549
 Conc: 281.50 ng/ml



#23 AR-1248-3

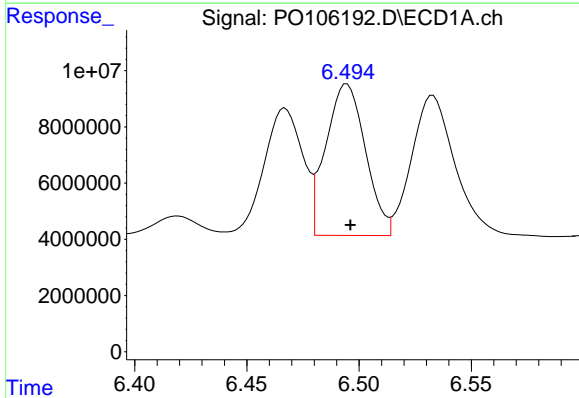
R.T.: 6.092 min
 Delta R.T.: -0.002 min
 Response: 90816939
 Conc: 317.96 ng/ml

Instrument :
 ECD_O
 ClientSampleId :
 111-D



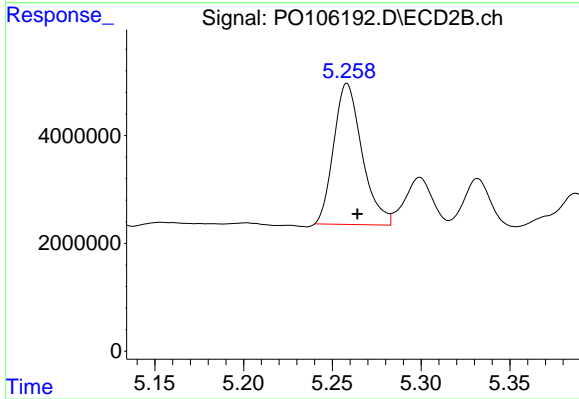
#23 AR-1248-3

R.T.: 5.087 min
 Delta R.T.: -0.005 min
 Response: 24613739
 Conc: 313.38 ng/ml



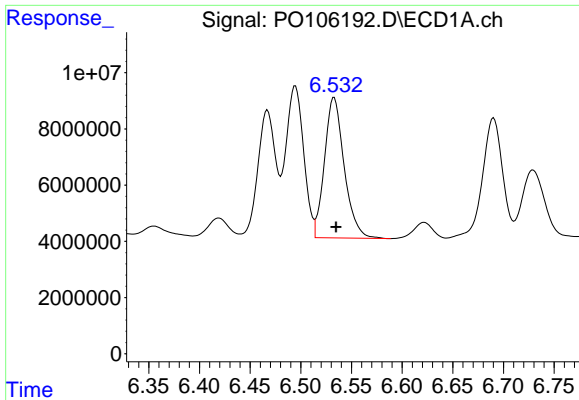
#24 AR-1248-4

R.T.: 6.495 min
 Delta R.T.: -0.002 min
 Response: 66135515
 Conc: 209.76 ng/ml



#24 AR-1248-4

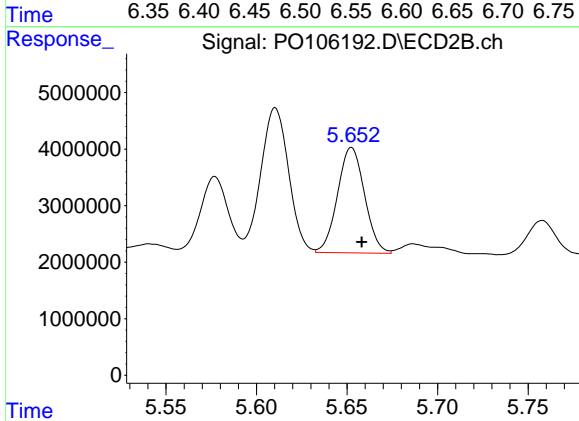
R.T.: 5.258 min
 Delta R.T.: -0.006 min
 Response: 29024235
 Conc: 311.71 ng/ml



#25 AR-1248-5

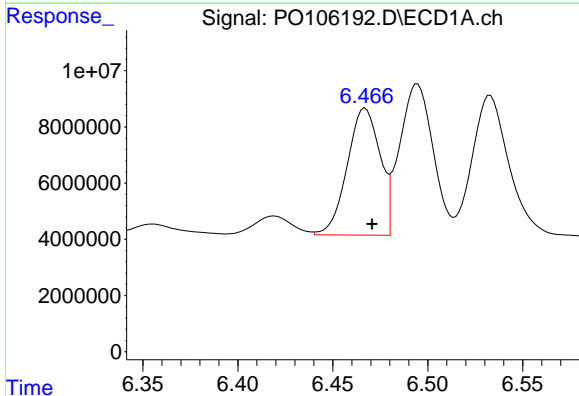
R.T.: 6.533 min
 Delta R.T.: -0.002 min
 Response: 67761176
 Conc: 223.24 ng/ml

Instrument :
 ECD_O
 ClientSampleId :
 111-D



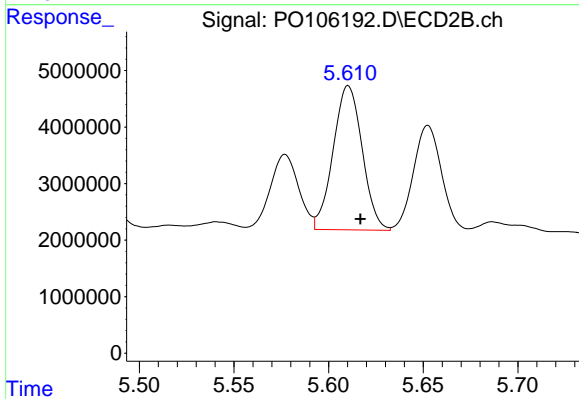
#25 AR-1248-5

R.T.: 5.652 min
 Delta R.T.: -0.006 min
 Response: 19366120
 Conc: 211.34 ng/ml



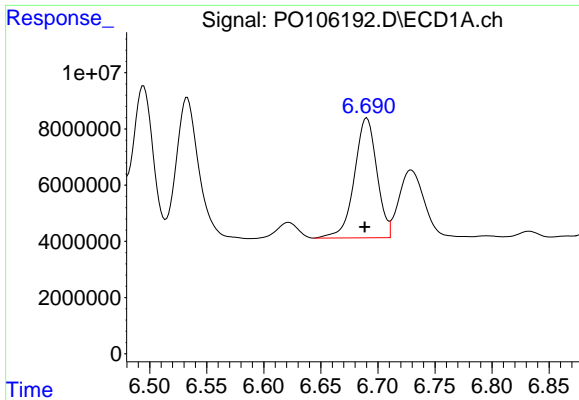
#26 AR-1254-1

R.T.: 6.467 min
 Delta R.T.: -0.004 min
 Response: 54300508
 Conc: 175.90 ng/ml



#26 AR-1254-1

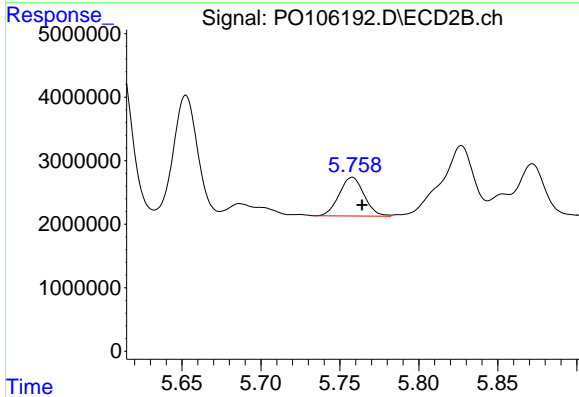
R.T.: 5.610 min
 Delta R.T.: -0.006 min
 Response: 27220560
 Conc: 201.75 ng/ml



#27 AR-1254-2

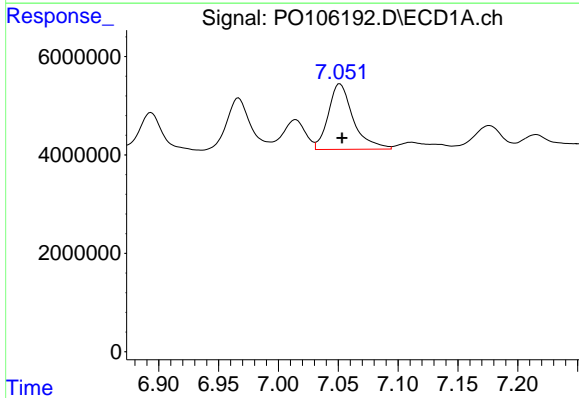
R.T.: 6.690 min
 Delta R.T.: 0.002 min
 Response: 58558485
 Conc: 127.10 ng/ml

Instrument :
 ECD_O
 ClientSampleId :
 111-D



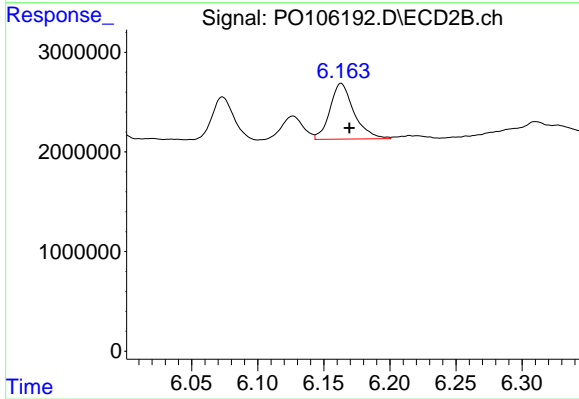
#27 AR-1254-2

R.T.: 5.758 min
 Delta R.T.: -0.006 min
 Response: 6690499
 Conc: 55.12 ng/ml



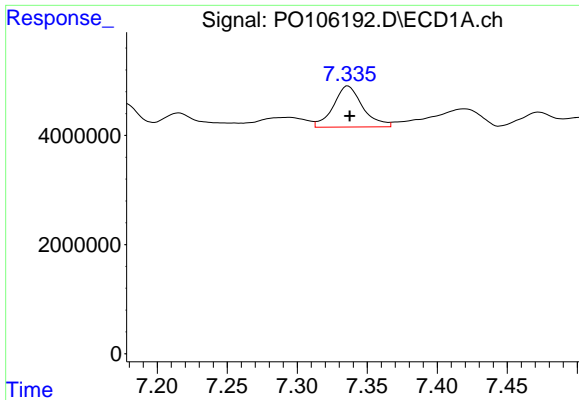
#28 AR-1254-3

R.T.: 7.052 min
 Delta R.T.: -0.002 min
 Response: 19367356
 Conc: 41.00 ng/ml



#28 AR-1254-3

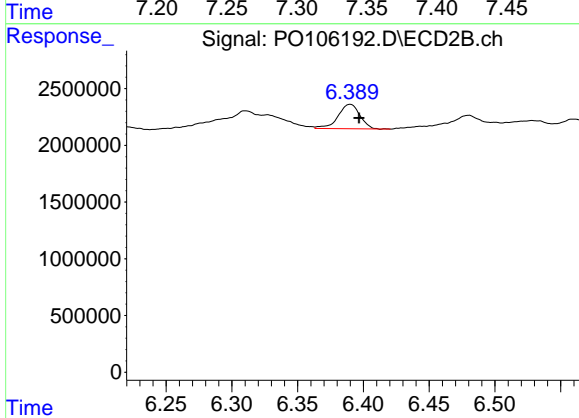
R.T.: 6.163 min
 Delta R.T.: -0.006 min
 Response: 7060475
 Conc: 36.63 ng/ml



#29 AR-1254-4

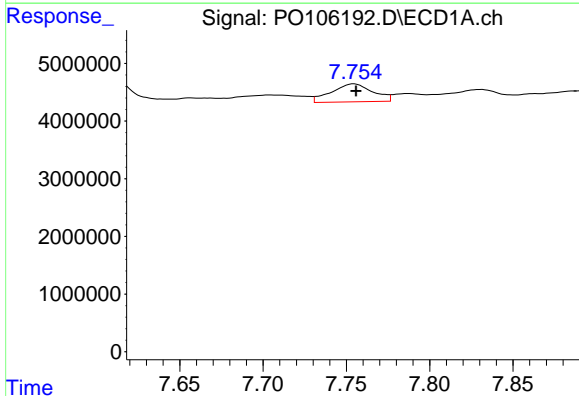
R.T.: 7.336 min
 Delta R.T.: -0.001 min
 Response: 10966507
 Conc: 31.48 ng/ml

Instrument :
 ECD_O
 ClientSampleId :
 111-D



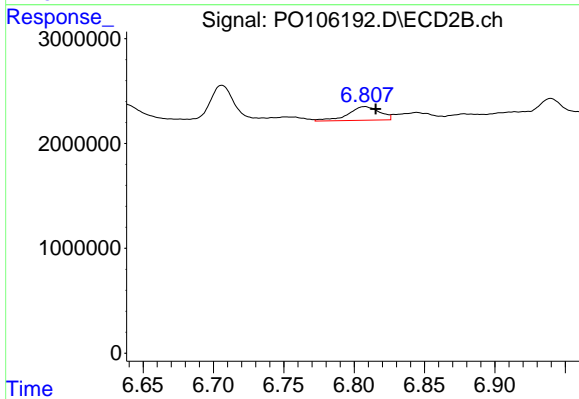
#29 AR-1254-4

R.T.: 6.390 min
 Delta R.T.: -0.007 min
 Response: 2490728
 Conc: 20.54 ng/ml



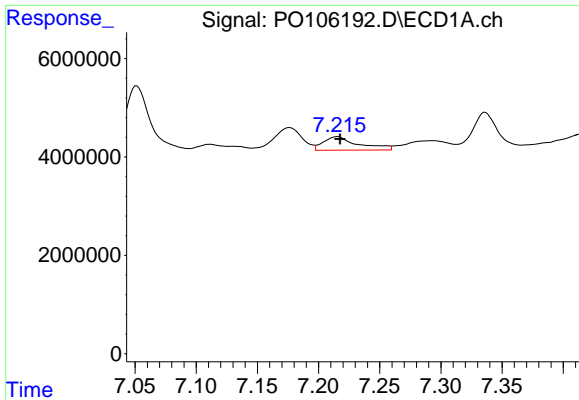
#30 AR-1254-5

R.T.: 7.755 min
 Delta R.T.: -0.001 min
 Response: 5373841
 Conc: 14.72 ng/ml



#30 AR-1254-5

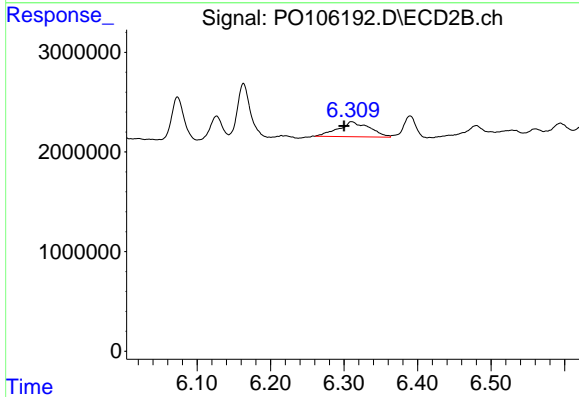
R.T.: 6.807 min
 Delta R.T.: -0.008 min
 Response: 2029953
 Conc: 11.48 ng/ml



#31 AR-1260-1

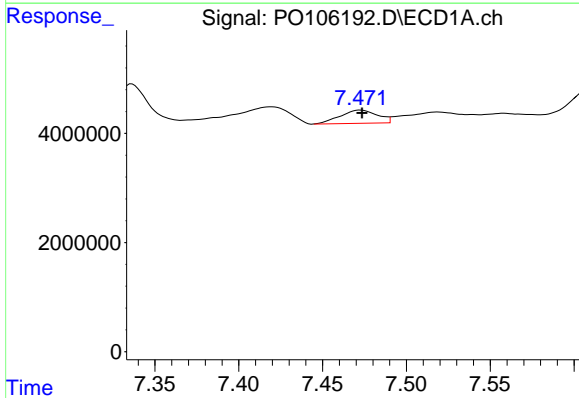
R.T.: 7.215 min
 Delta R.T.: -0.002 min
 Response: 5515643
 Conc: 15.37 ng/ml

Instrument :
 ECD_O
 ClientSampleId :
 111-D



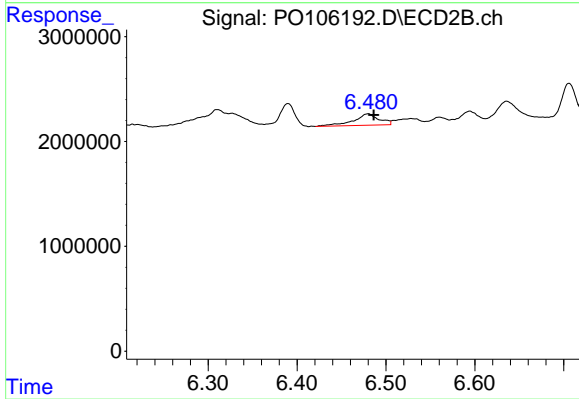
#31 AR-1260-1

R.T.: 6.310 min
 Delta R.T.: 0.010 min
 Response: 4425366
 Conc: 33.59 ng/ml



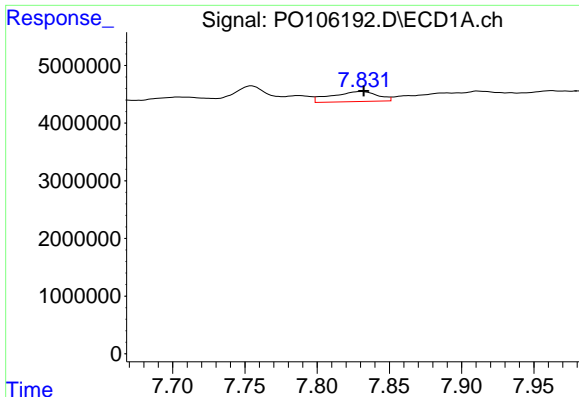
#32 AR-1260-2

R.T.: 7.473 min
 Delta R.T.: 0.000 min
 Response: 3752024
 Conc: 8.93 ng/ml



#32 AR-1260-2

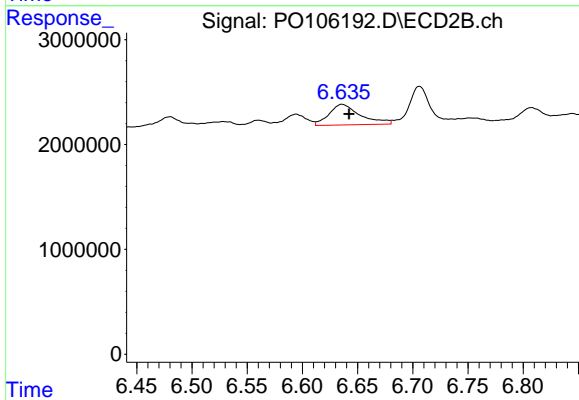
R.T.: 6.480 min
 Delta R.T.: -0.007 min
 Response: 2173869
 Conc: 13.25 ng/ml



#33 AR-1260-3

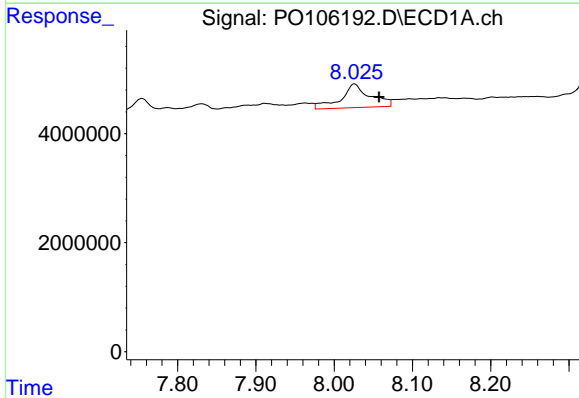
R.T.: 7.831 min
 Delta R.T.: -0.002 min
 Response: 3892344
 Conc: 14.55 ng/ml

Instrument :
 ECD_O
 ClientSampleId :
 111-D



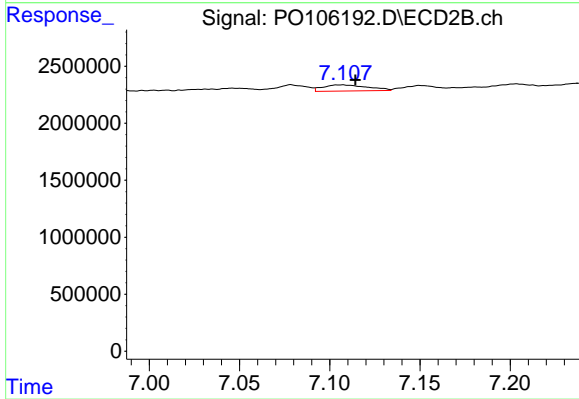
#33 AR-1260-3

R.T.: 6.636 min
 Delta R.T.: -0.006 min
 Response: 3872587
 Conc: 22.95 ng/ml



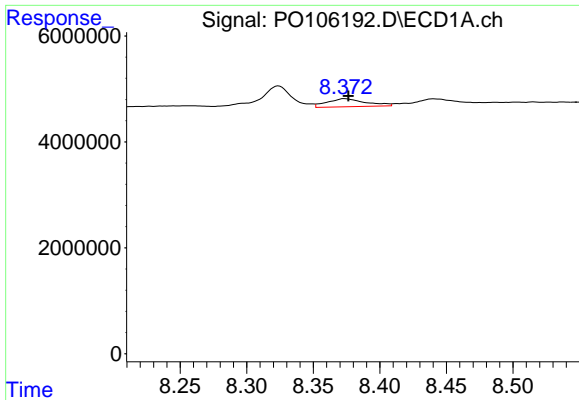
#34 AR-1260-4

R.T.: 8.026 min
 Delta R.T.: -0.031 min
 Response: 11303492
 Conc: 36.46 ng/ml



#34 AR-1260-4

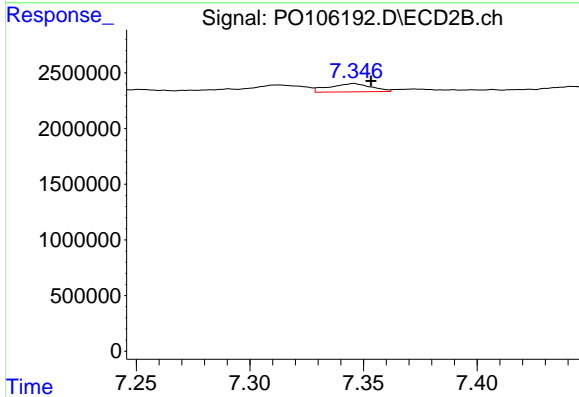
R.T.: 7.106 min
 Delta R.T.: -0.008 min
 Response: 936752
 Conc: 8.45 ng/ml



#35 AR-1260-5

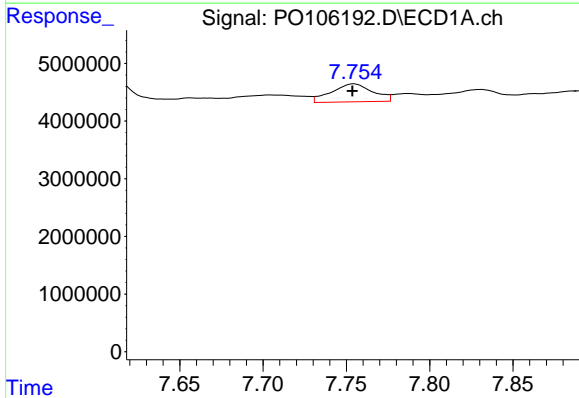
R.T.: 8.374 min
 Delta R.T.: -0.002 min
 Response: 3049686
 Conc: 5.48 ng/ml

Instrument :
 ECD_O
 ClientSampleId :
 111-D



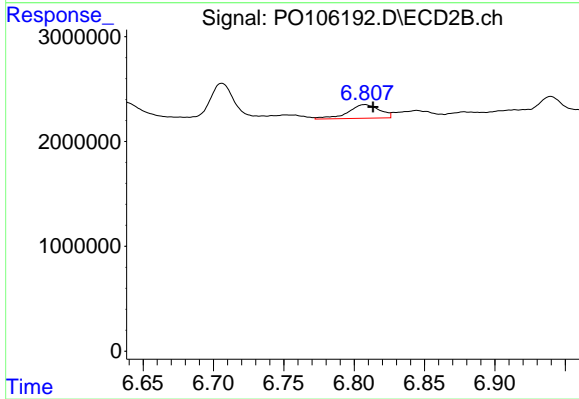
#35 AR-1260-5

R.T.: 7.346 min
 Delta R.T.: -0.008 min
 Response: 950871
 Conc: 3.50 ng/ml



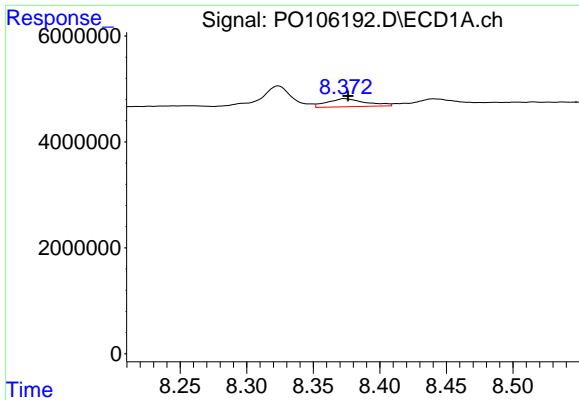
#36 AR-1262-1

R.T.: 7.755 min
 Delta R.T.: 0.000 min
 Response: 5373841
 Conc: 18.50 ng/ml



#36 AR-1262-1

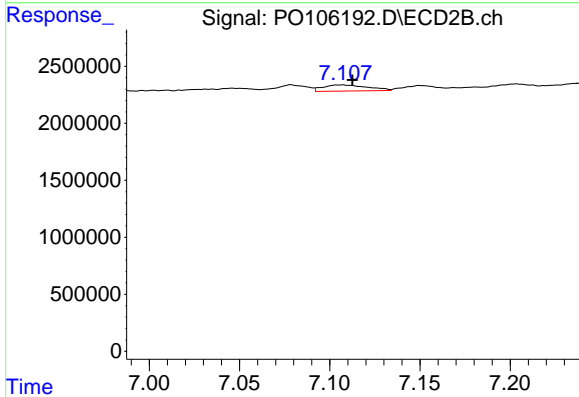
R.T.: 6.807 min
 Delta R.T.: -0.006 min
 Response: 2029953
 Conc: 21.06 ng/ml



#37 AR-1262-2

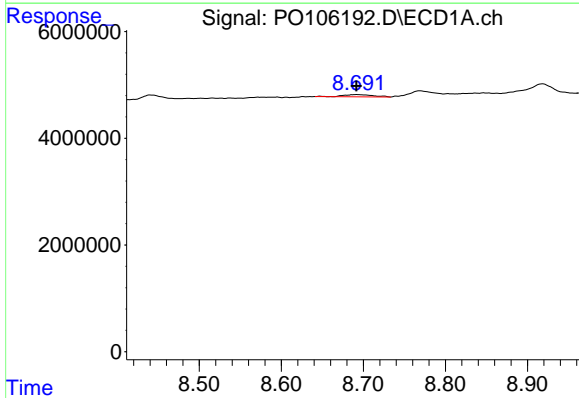
R.T.: 8.374 min
 Delta R.T.: -0.002 min
 Response: 3049686
 Conc: 4.24 ng/ml

Instrument :
 ECD_O
 ClientSampleId :
 111-D



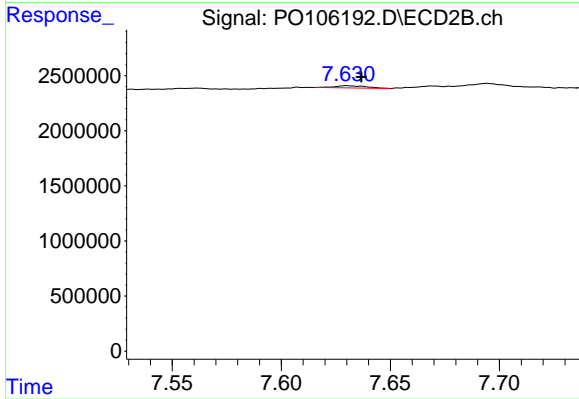
#37 AR-1262-2

R.T.: 7.106 min
 Delta R.T.: -0.006 min
 Response: 936752
 Conc: 6.03 ng/ml



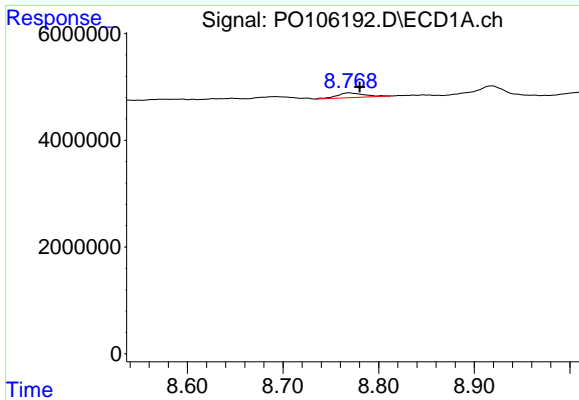
#38 AR-1262-3

R.T.: 8.692 min
 Delta R.T.: 0.000 min
 Response: 988785
 Conc: 2.05 ng/ml



#38 AR-1262-3

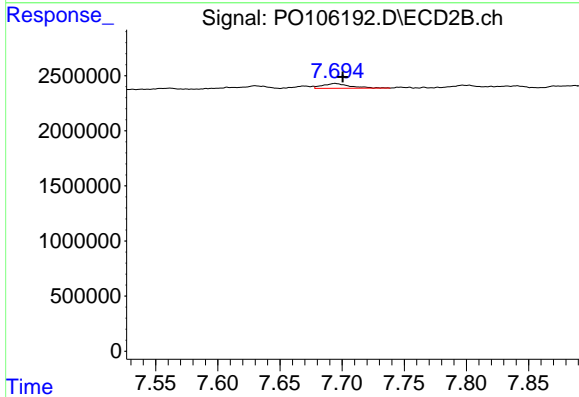
R.T.: 7.630 min
 Delta R.T.: -0.007 min
 Response: 201721
 Conc: 1.77 ng/ml



#39 AR-1262-4

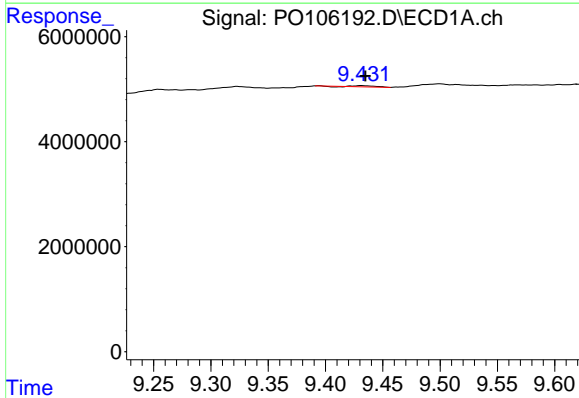
R.T.: 8.769 min
 Delta R.T.: -0.011 min
 Response: 1740221
 Conc: 4.85 ng/ml

Instrument :
 ECD_O
 ClientSampleId :
 111-D



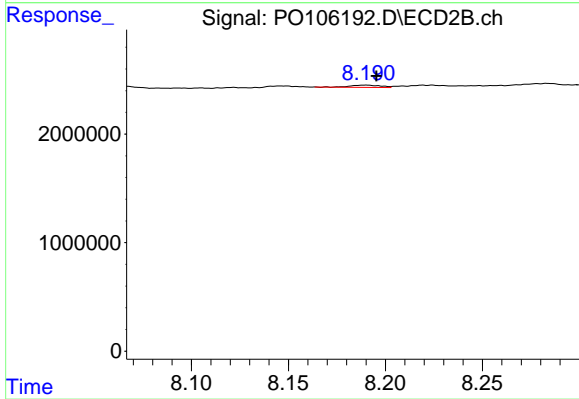
#39 AR-1262-4

R.T.: 7.694 min
 Delta R.T.: -0.006 min
 Response: 679617
 Conc: 2.85 ng/ml



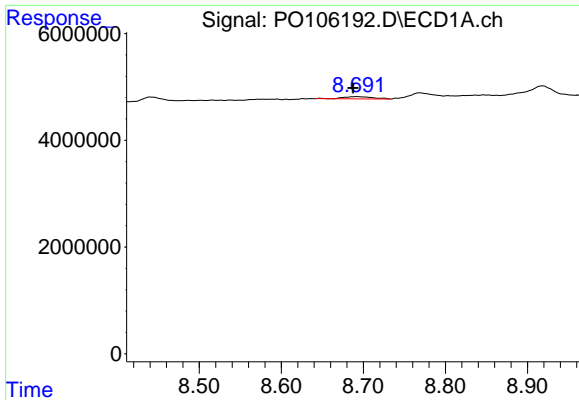
#40 AR-1262-5

R.T.: 9.432 min
 Delta R.T.: -0.003 min
 Response: 235546
 Conc: 0.92 ng/ml



#40 AR-1262-5

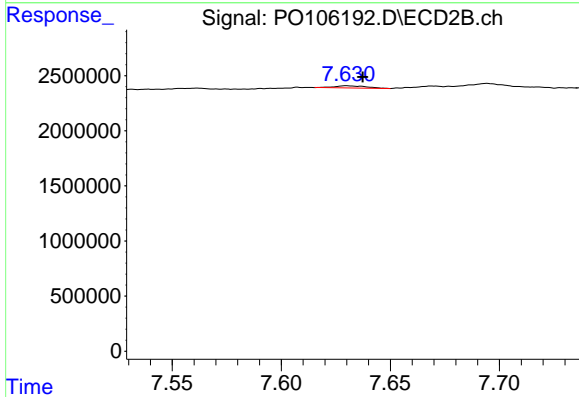
R.T.: 8.190 min
 Delta R.T.: -0.005 min
 Response: 216146
 Conc: 1.97 ng/ml



#41 AR-1268-1

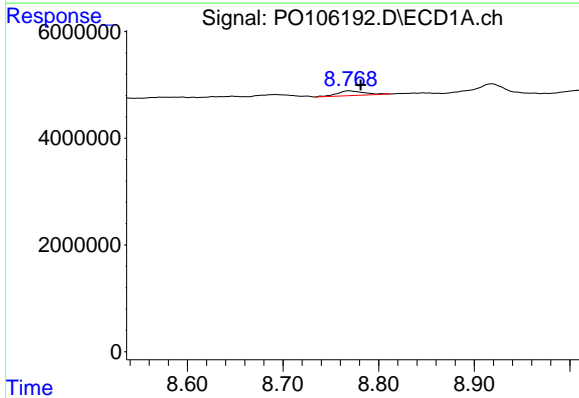
R.T.: 8.692 min
 Delta R.T.: 0.004 min
 Response: 988785
 Conc: 1.21 ng/ml

Instrument :
 ECD_O
 ClientSampleId :
 111-D



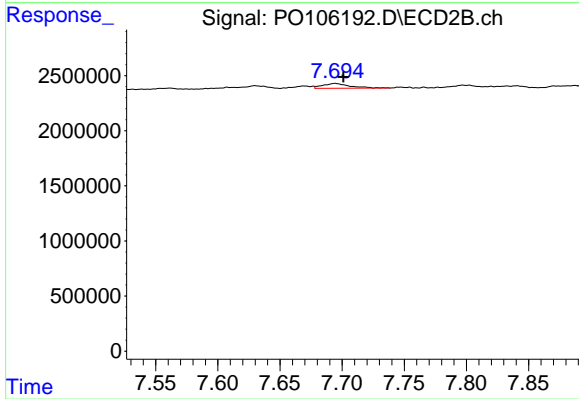
#41 AR-1268-1

R.T.: 7.630 min
 Delta R.T.: -0.007 min
 Response: 201721
 Conc: 0.59 ng/ml



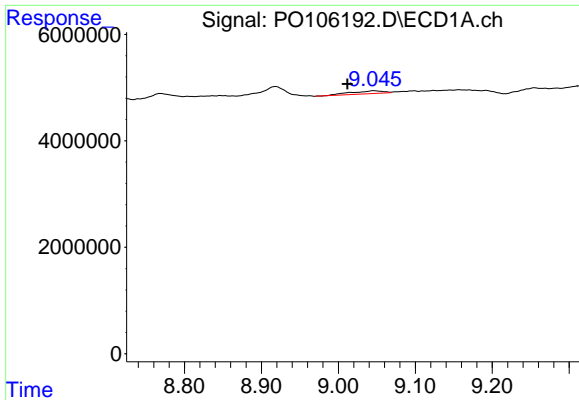
#42 AR-1268-2

R.T.: 8.769 min
 Delta R.T.: -0.012 min
 Response: 1740221
 Conc: 2.38 ng/ml



#42 AR-1268-2

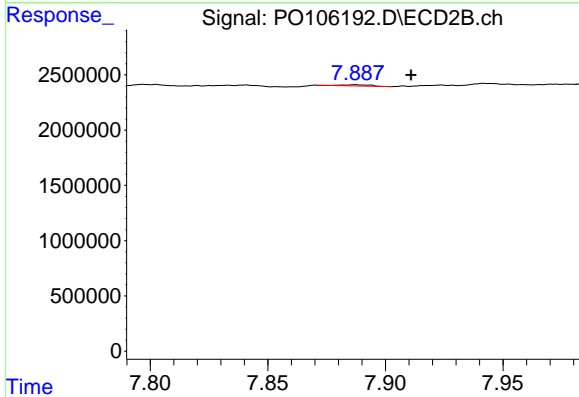
R.T.: 7.694 min
 Delta R.T.: -0.007 min
 Response: 679617
 Conc: 2.11 ng/ml



#43 AR-1268-3

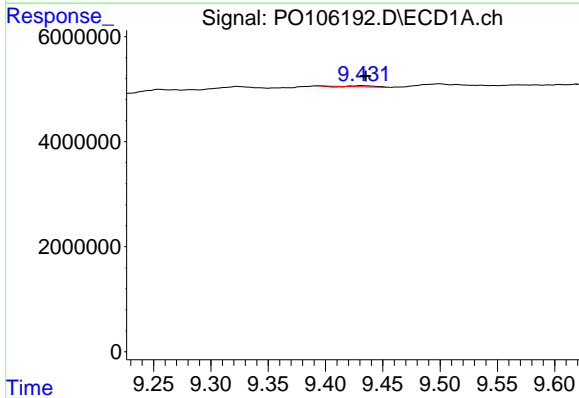
R.T.: 9.046 min
 Delta R.T.: 0.034 min
 Response: 1628070
 Conc: 2.65 ng/ml

Instrument :
 ECD_O
 ClientSampleId :
 111-D



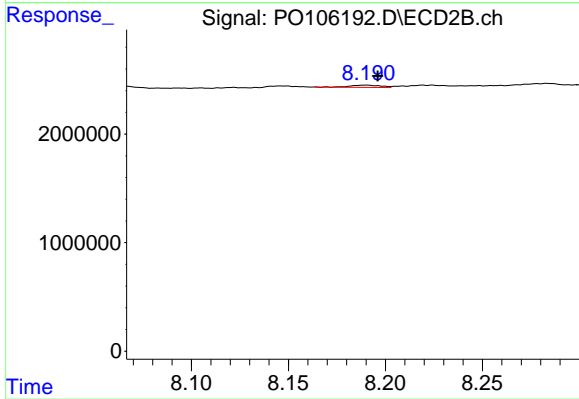
#43 AR-1268-3

R.T.: 7.887 min
 Delta R.T.: -0.024 min
 Response: 88327
 Conc: 0.33 ng/ml



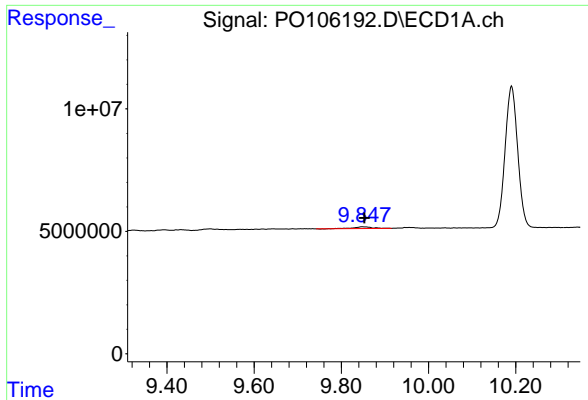
#44 AR-1268-4

R.T.: 9.432 min
 Delta R.T.: -0.003 min
 Response: 235546
 Conc: 0.87 ng/ml



#44 AR-1268-4

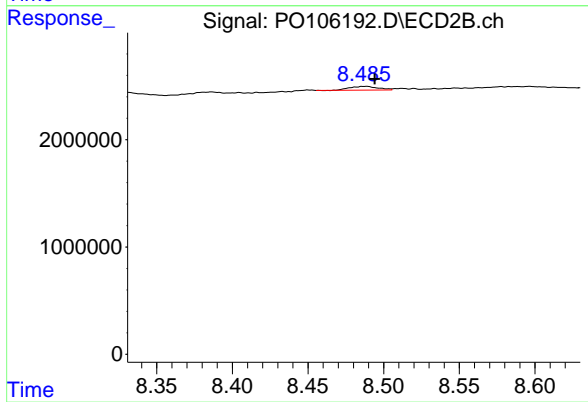
R.T.: 8.190 min
 Delta R.T.: -0.006 min
 Response: 216146
 Conc: 1.91 ng/ml



#45 AR-1268-5

R.T.: 9.849 min
 Delta R.T.: -0.004 min
 Response: 2215157
 Conc: 1.10 ng/ml

Instrument :
 ECD_O
 ClientSampleId :
 111-D



#45 AR-1268-5

R.T.: 8.488 min
 Delta R.T.: -0.006 min
 Response: 450249
 Conc: 0.53 ng/ml