

Data Path : Z:\pestpcbsrv\HPCHEM1\ECD\_O\Data\P0090524\  
 Data File : P0106200.D  
 Signal(s) : Signal #1: ECD1A.ch Signal #2: ECD2B.ch  
 Acq On : 05 Sep 2024 20:01  
 Operator : YP/AJ  
 Sample : P3839-05  
 Misc :  
 ALS Vial : 26 Sample Multiplier: 1

Instrument :  
 ECD\_O  
 ClientSampleId :  
 822

Integration File signal 1: autoint1.e  
 Integration File signal 2: autoint2.e  
 Quant Time: Sep 06 01:35:39 2024  
 Quant Method : Z:\pestpcbsrv\HPCHEM1\ECD\_O\methods\P0082624.M  
 Quant Title : GC EXTRACTABLES  
 QLast Update : Tue Aug 27 06:50:58 2024  
 Response via : Initial Calibration  
 Integrator: ChemStation

Volume Inj. : 2 µl  
 Signal #1 Phase : ZB-MR1 Signal #2 Phase: ZB-MR2  
 Signal #1 Info : 30Mx0.32mmx 0.50µ Signal #2 Info : 30M x 0.32mm x 0.25µm

Compound	RT#1	RT#2	Resp#1	Resp#2	ng/ml	ng/ml
-----						
System Monitoring Compounds						
1) SA Tetrachlo...	4.451	3.717	194.0E6	72308441	21.264	26.763 #
2) SA Decachlor...	10.205	8.763	98197194	35773698	18.094	16.387

Target Compounds

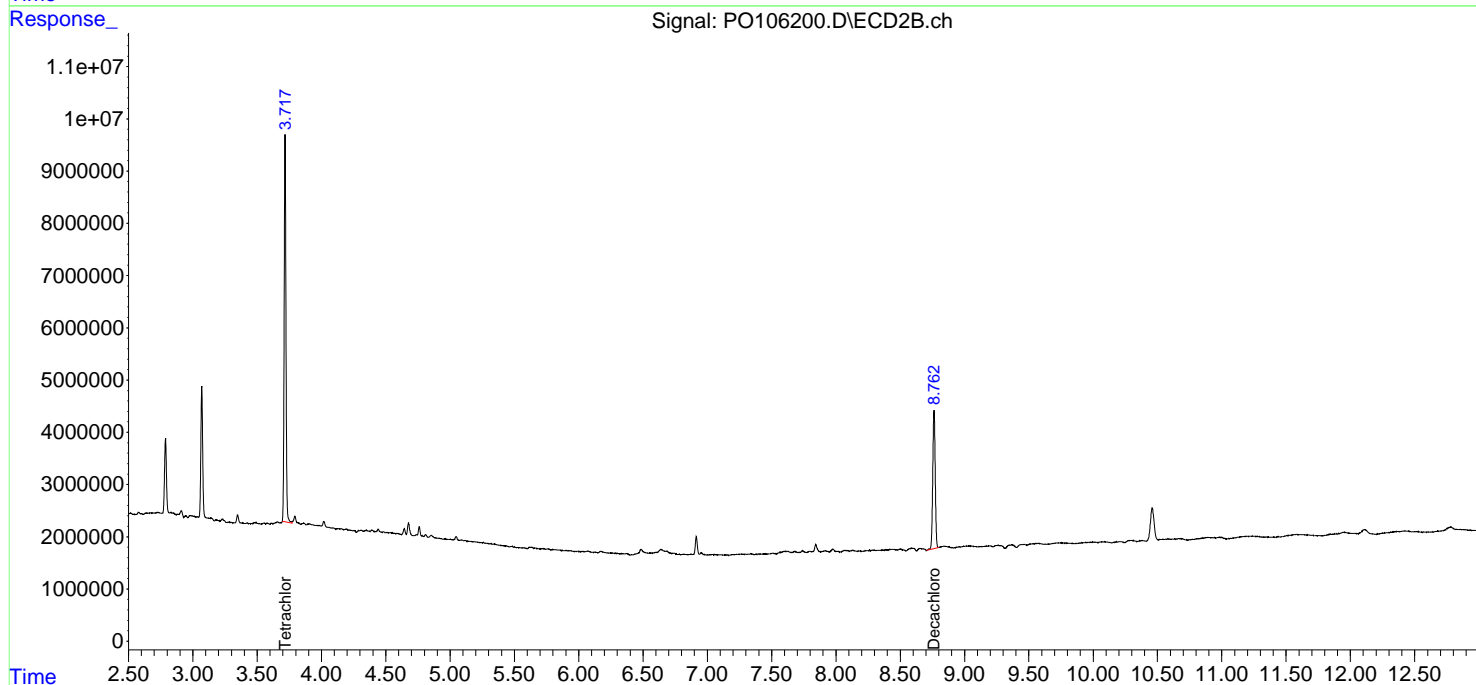
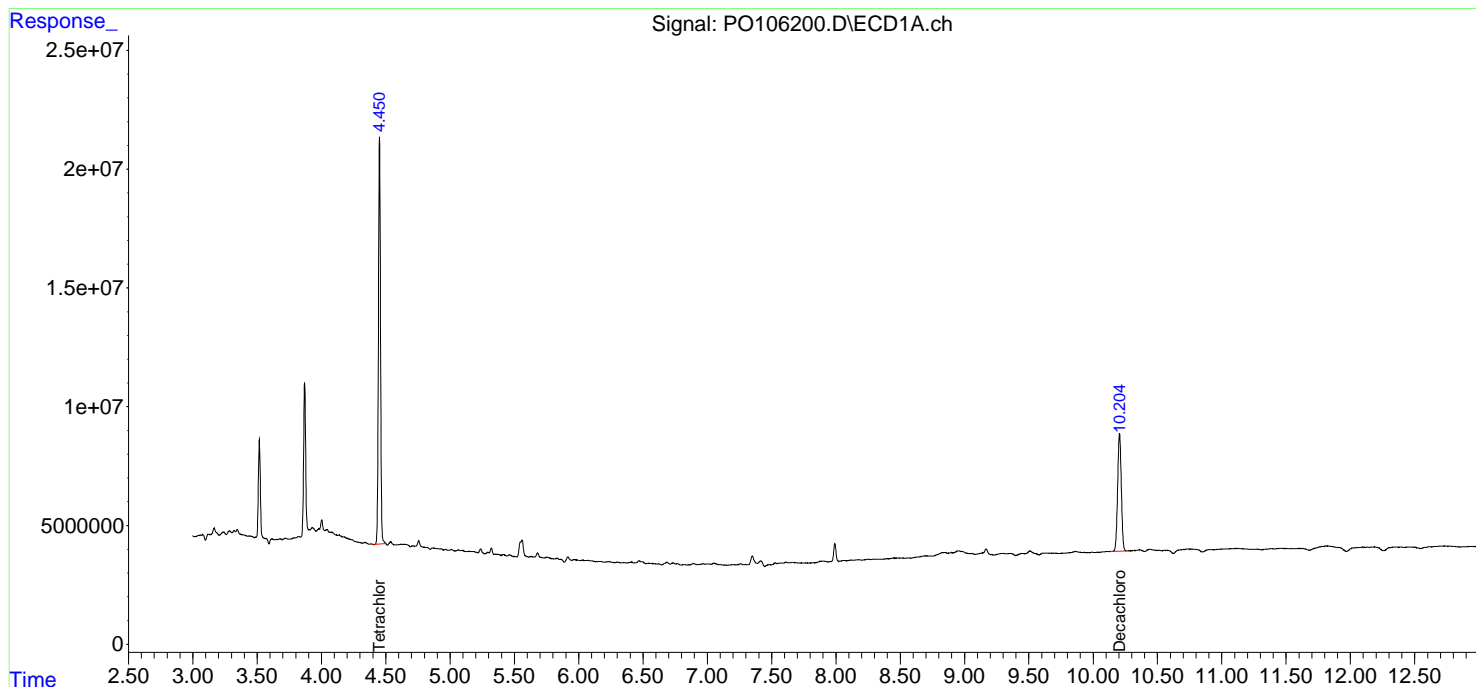
(f)=RT Delta > 1/2 Window (#)=Amounts differ by > 25% (m)=manual int.

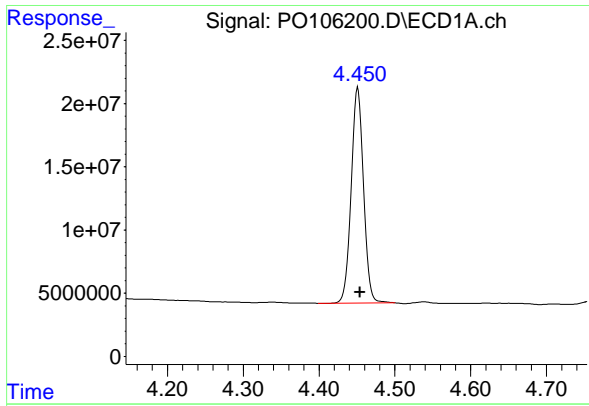
Data Path : Z:\pestpcbsrv\HPCHEM1\ECD\_O\Data\PO090524\  
Data File : PO106200.D  
Signal(s) : Signal #1: ECD1A.ch Signal #2: ECD2B.ch  
Acq On : 05 Sep 2024 20:01  
Operator : YP/AJ  
Sample : P3839-05  
Misc :  
ALS Vial : 26 Sample Multiplier: 1

Instrument :  
ECD\_O  
ClientSampleId :  
822

Integration File signal 1: autoint1.e  
Integration File signal 2: autoint2.e  
Quant Time: Sep 06 01:35:39 2024  
Quant Method : Z:\pestpcbsrv\HPCHEM1\ECD\_O\methods\PO082624.M  
Quant Title : GC EXTRACTABLES  
QLast Update : Tue Aug 27 06:50:58 2024  
Response via : Initial Calibration  
Integrator: ChemStation

Volume Inj. : 2 µl  
Signal #1 Phase : ZB-MR1 Signal #2 Phase: ZB-MR2  
Signal #1 Info : 30Mx0.32mmx 0.50µm Signal #2 Info : 30M x 0.32mm x 0.25µm

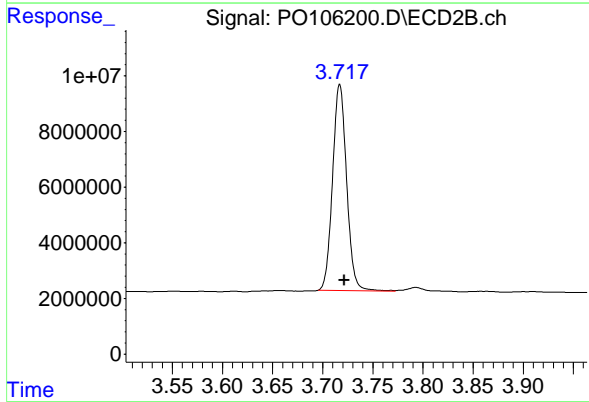




#1 Tetrachloro-m-xylene

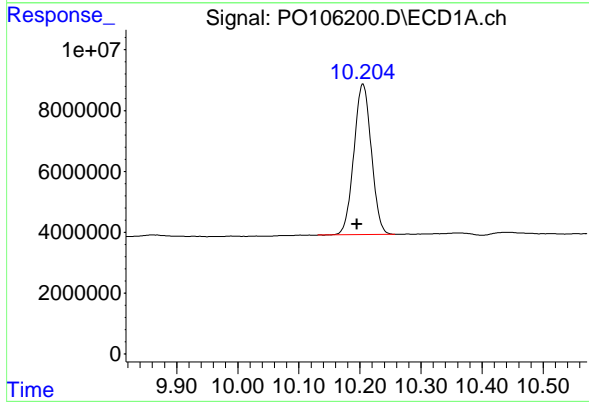
R.T.: 4.451 min  
 Delta R.T.: -0.003 min  
 Response: 193999542  
 Conc: 21.26 ng/ml

Instrument :  
 ECD\_O  
 ClientSampleId :  
 822



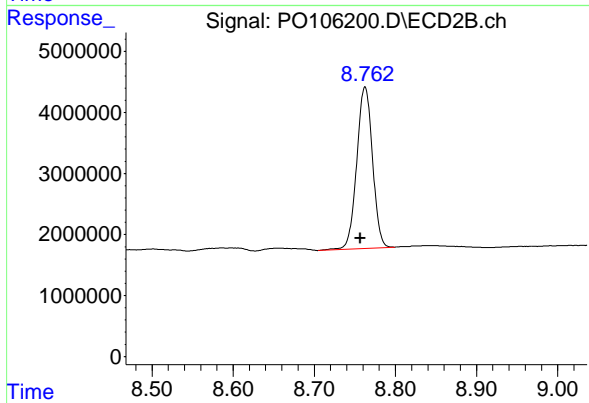
#1 Tetrachloro-m-xylene

R.T.: 3.717 min  
 Delta R.T.: -0.005 min  
 Response: 72308441  
 Conc: 26.76 ng/ml



#2 Decachlorobiphenyl

R.T.: 10.205 min  
 Delta R.T.: 0.009 min  
 Response: 98197194  
 Conc: 18.09 ng/ml



#2 Decachlorobiphenyl

R.T.: 8.763 min  
 Delta R.T.: 0.006 min  
 Response: 35773698  
 Conc: 16.39 ng/ml