

Data Path : Z:\pestpcbsrv\HPCHEM1\ECD_O\Data\P0090524\
 Data File : P0106226.D
 Signal(s) : Signal #1: ECD1A.ch Signal #2: ECD2B.ch
 Acq On : 06 Sep 2024 04:57
 Operator : YP/AJ
 Sample : PB163161BSD
 Misc :
 ALS Vial : 31 Sample Multiplier: 1

Instrument :
 ECD_O
ClientSampleId :
 PB163161BSD

Integration File signal 1: autoint1.e
 Integration File signal 2: autoint2.e
 Quant Time: Sep 06 05:33:36 2024
 Quant Method : Z:\pestpcbsrv\HPCHEM1\ECD_O\methods\P0082624.M
 Quant Title : GC EXTRACTABLES
 QLast Update : Tue Aug 27 06:50:58 2024
 Response via : Initial Calibration
 Integrator: ChemStation

Volume Inj. : 2 µl
 Signal #1 Phase : ZB-MR1 Signal #2 Phase: ZB-MR2
 Signal #1 Info : 30Mx0.32mmx 0.50µ Signal #2 Info : 30M x 0.32mm x 0.25µm

Compound	RT#1	RT#2	Resp#1	Resp#2	ng/ml	ng/ml

System Monitoring Compounds						
1) SA Tetrachlo...	4.452	3.718	193.8E6	59193620	21.246	21.909
2) SA Decachlor...	10.189	8.746	122.7E6	50709801	22.614	23.229
Target Compounds						
3) L1 AR-1016-1	5.615	4.806	133.3E6	44529787	421.884	465.787
4) L1 AR-1016-2	5.638	4.826	188.2E6	59176922	428.217	466.310
5) L1 AR-1016-3	5.700	5.002	115.6E6	32751188	429.911	468.176
6) L1 AR-1016-4	5.798	5.044	94476307	23158556	429.173	430.654
7) L1 AR-1016-5	6.092	5.258	93412171	30052257	439.064	436.736
31) L7 AR-1260-1	7.216	6.293	165.7E6	63116785	461.780	479.094
32) L7 AR-1260-2	7.471	6.479	183.7E6	81657267	437.242	497.577
33) L7 AR-1260-3	7.829	6.634	120.5E6	79139581	450.587	468.929
34) L7 AR-1260-4	8.055	7.106	151.2E6	53058559	487.864	478.777
35) L7 AR-1260-5	8.374	7.345	251.6E6	127.3E6	452.178	469.071

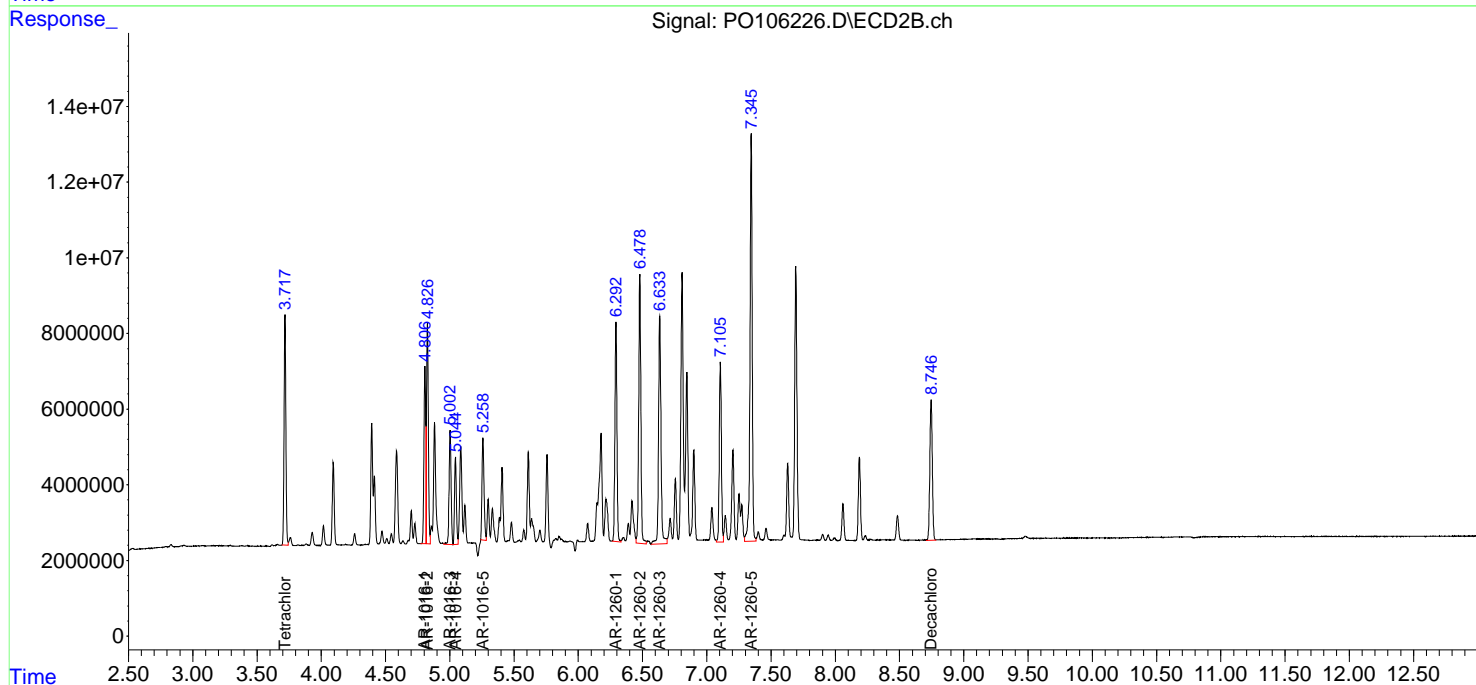
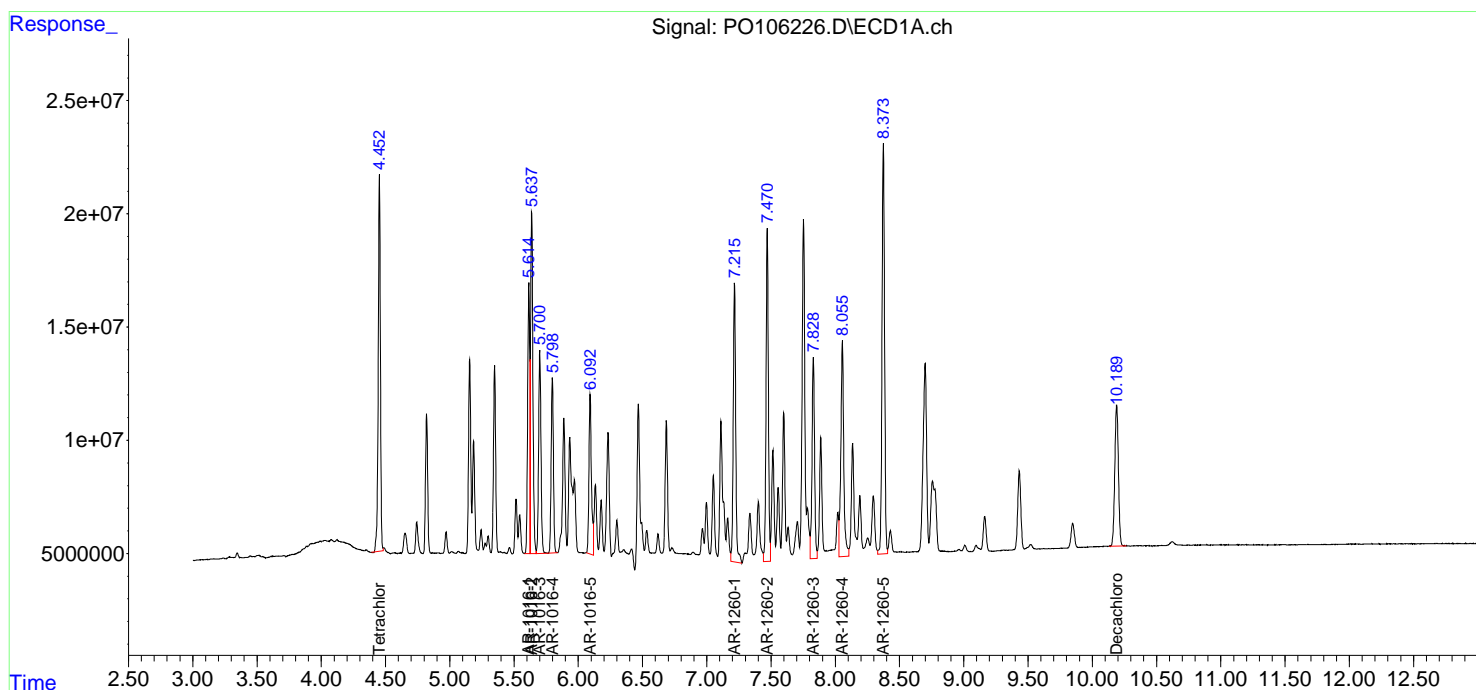
(f)=RT Delta > 1/2 Window (#)=Amounts differ by > 25% (m)=manual int.

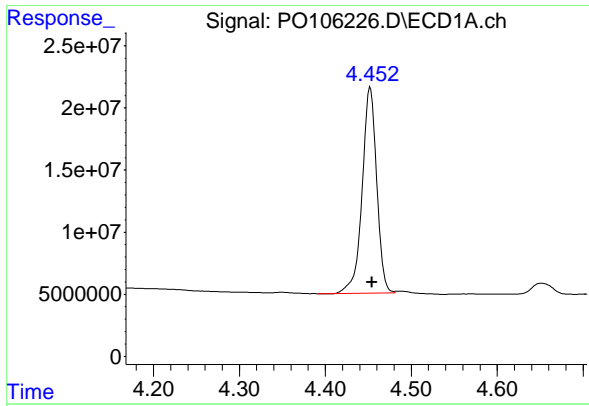
Data Path : Z:\pestpcbsrv\HPCHEM1\ECD_O\Data\PO090524\
 Data File : PO106226.D
 Signal(s) : Signal #1: ECD1A.ch Signal #2: ECD2B.ch
 Acq On : 06 Sep 2024 04:57
 Operator : YP/AJ
 Sample : PB163161BSD
 Misc :
 ALS Vial : 31 Sample Multiplier: 1

Instrument :
 ECD_O
 ClientSampleId :
 PB163161BSD

Integration File signal 1: autoint1.e
 Integration File signal 2: autoint2.e
 Quant Time: Sep 06 05:33:36 2024
 Quant Method : Z:\pestpcbsrv\HPCHEM1\ECD_O\methods\PO082624.M
 Quant Title : GC EXTRACTABLES
 QLast Update : Tue Aug 27 06:50:58 2024
 Response via : Initial Calibration
 Integrator: ChemStation

Volume Inj. : 2 µl
 Signal #1 Phase : ZB-MR1 Signal #2 Phase: ZB-MR2
 Signal #1 Info : 30Mx0.32mmx 0.50µm Signal #2 Info : 30M x 0.32mm x 0.25µm

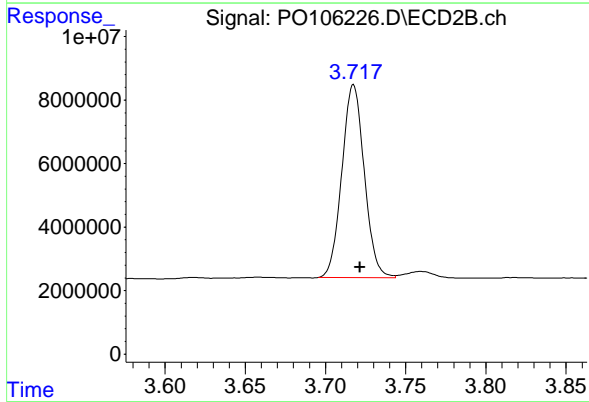




#1 Tetrachloro-m-xylene

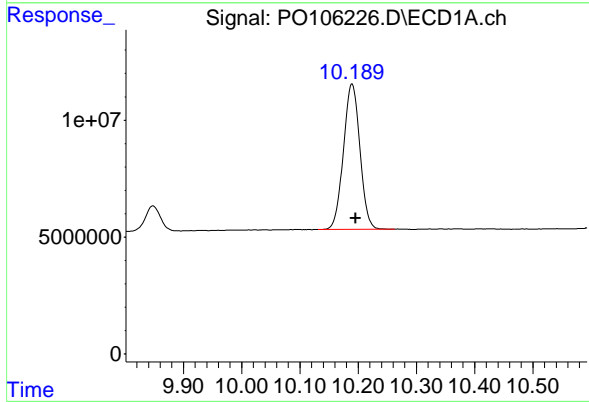
R.T.: 4.452 min
 Delta R.T.: -0.002 min
 Response: 193833951
 Conc: 21.25 ng/ml

Instrument :
 ECD_O
 ClientSampleId :
 PB163161BSD



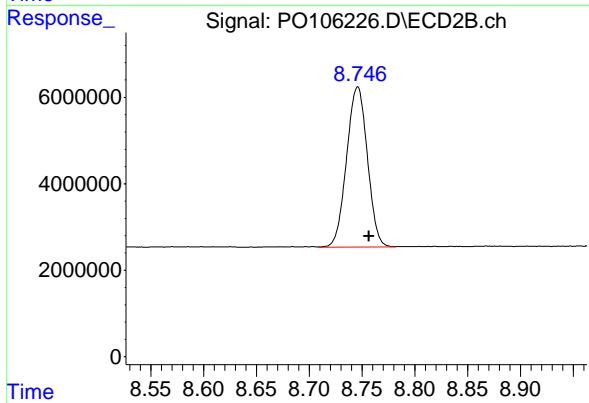
#1 Tetrachloro-m-xylene

R.T.: 3.718 min
 Delta R.T.: -0.004 min
 Response: 59193620
 Conc: 21.91 ng/ml



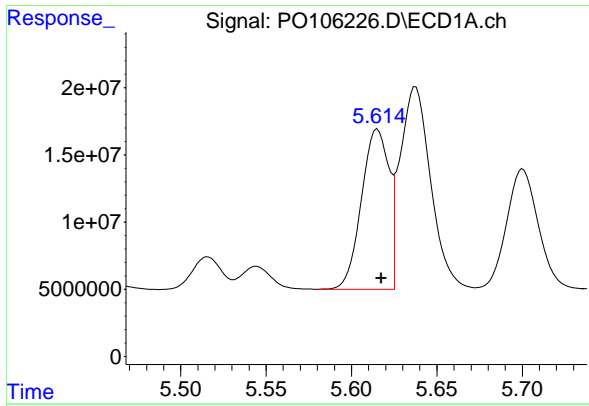
#2 Decachlorobiphenyl

R.T.: 10.189 min
 Delta R.T.: -0.006 min
 Response: 122722749
 Conc: 22.61 ng/ml



#2 Decachlorobiphenyl

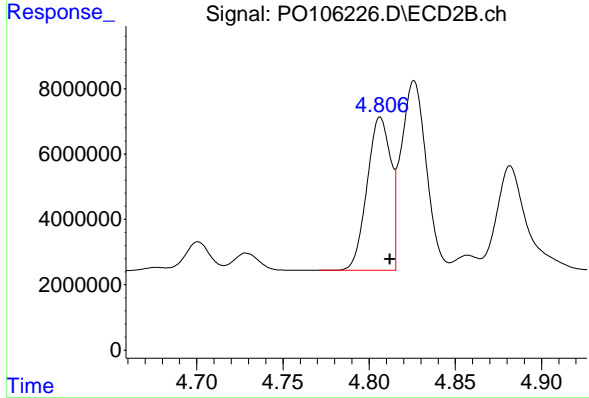
R.T.: 8.746 min
 Delta R.T.: -0.011 min
 Response: 50709801
 Conc: 23.23 ng/ml



#3 AR-1016-1

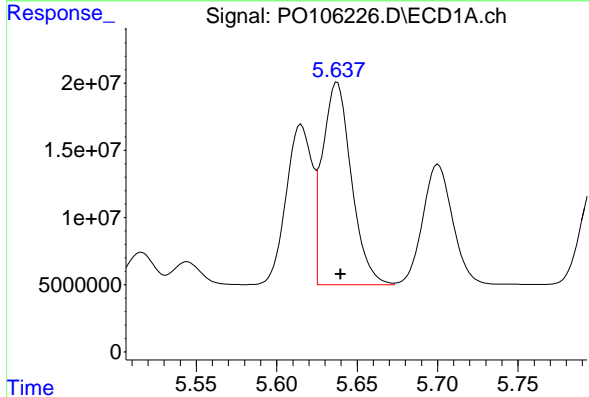
R.T.: 5.615 min
 Delta R.T.: -0.002 min
 Response: 133337607
 Conc: 421.88 ng/ml

Instrument :
 ECD_O
 ClientSampleId :
 PB163161BSD



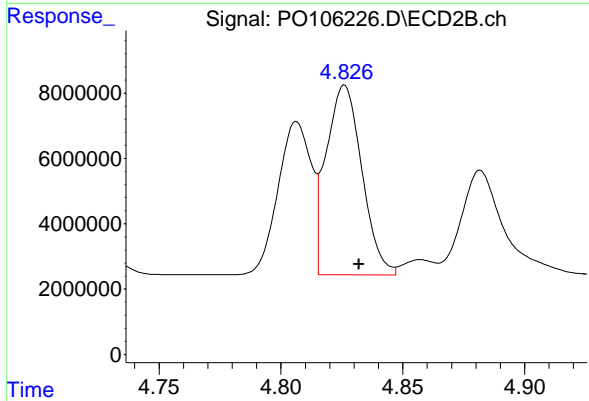
#3 AR-1016-1

R.T.: 4.806 min
 Delta R.T.: -0.006 min
 Response: 44529787
 Conc: 465.79 ng/ml



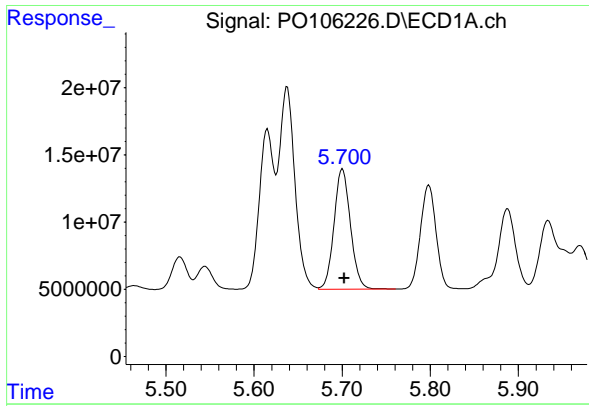
#4 AR-1016-2

R.T.: 5.638 min
 Delta R.T.: -0.002 min
 Response: 188239570
 Conc: 428.22 ng/ml



#4 AR-1016-2

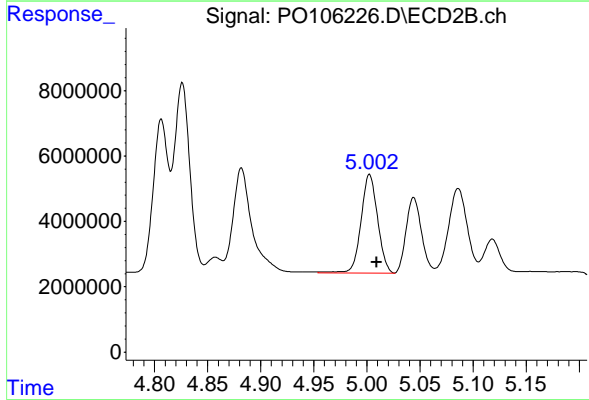
R.T.: 4.826 min
 Delta R.T.: -0.006 min
 Response: 59176922
 Conc: 466.31 ng/ml



#5 AR-1016-3

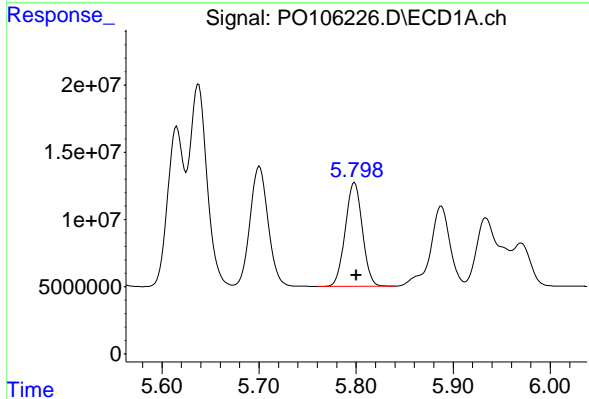
R.T.: 5.700 min
 Delta R.T.: -0.002 min
 Response: 115581748
 Conc: 429.91 ng/ml

Instrument :
 ECD_O
 ClientSampleId :
 PB163161BSD



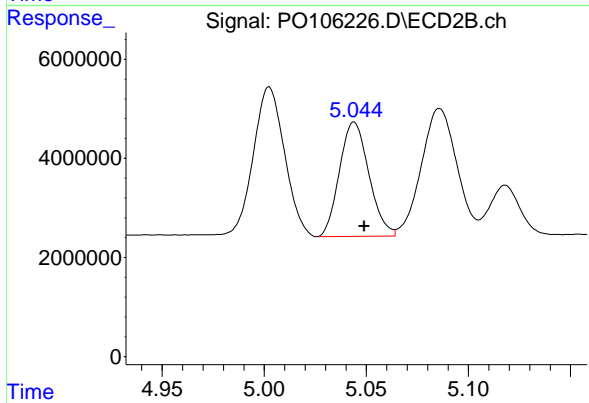
#5 AR-1016-3

R.T.: 5.002 min
 Delta R.T.: -0.007 min
 Response: 32751188
 Conc: 468.18 ng/ml



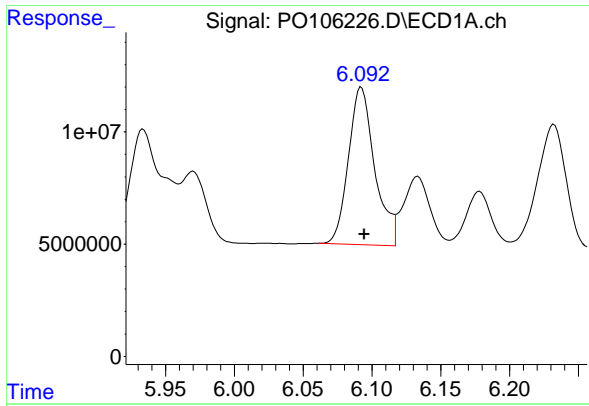
#6 AR-1016-4

R.T.: 5.798 min
 Delta R.T.: -0.002 min
 Response: 94476307
 Conc: 429.17 ng/ml



#6 AR-1016-4

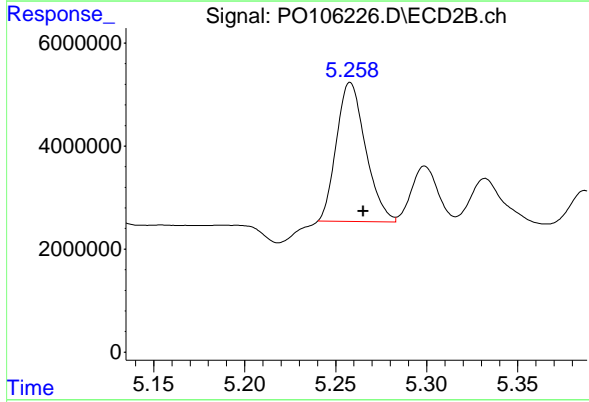
R.T.: 5.044 min
 Delta R.T.: -0.005 min
 Response: 23158556
 Conc: 430.65 ng/ml



#7 AR-1016-5

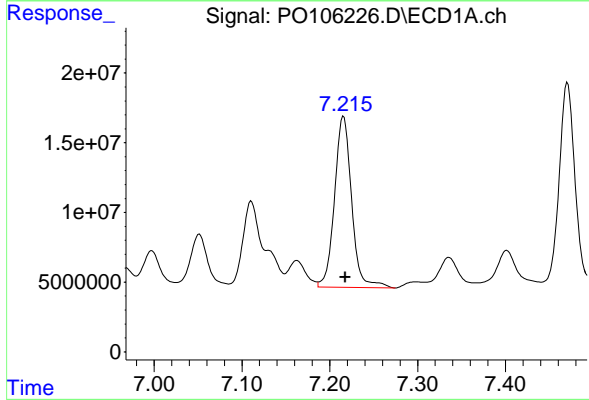
R.T.: 6.092 min
 Delta R.T.: -0.002 min
 Response: 93412171
 Conc: 439.06 ng/ml

Instrument :
 ECD_O
 ClientSampleId :
 PB163161BSD



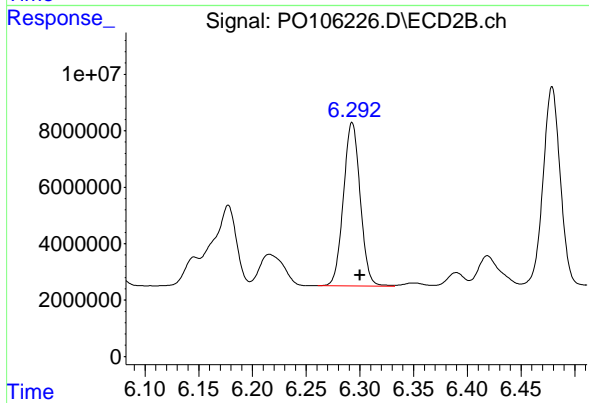
#7 AR-1016-5

R.T.: 5.258 min
 Delta R.T.: -0.007 min
 Response: 30052257
 Conc: 436.74 ng/ml



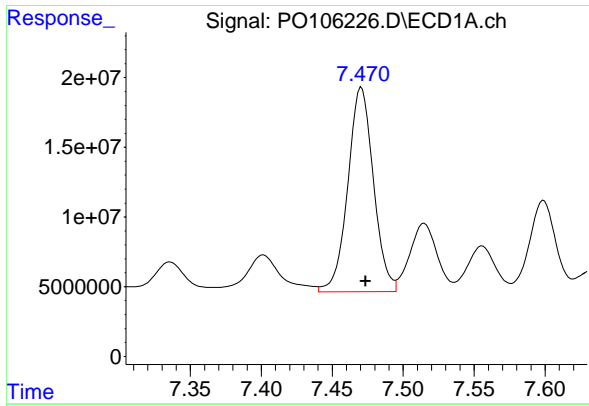
#31 AR-1260-1

R.T.: 7.216 min
 Delta R.T.: -0.002 min
 Response: 165714247
 Conc: 461.78 ng/ml



#31 AR-1260-1

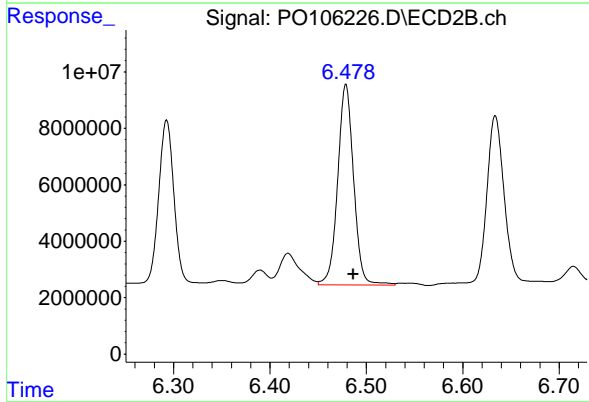
R.T.: 6.293 min
 Delta R.T.: -0.007 min
 Response: 63116785
 Conc: 479.09 ng/ml



#32 AR-1260-2

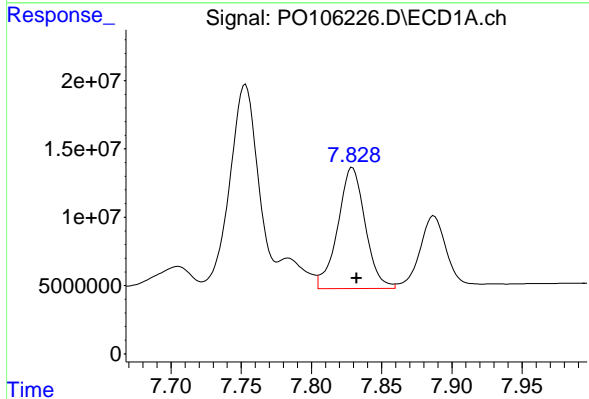
R.T.: 7.471 min
 Delta R.T.: -0.003 min
 Response: 183671030
 Conc: 437.24 ng/ml

Instrument :
 ECD_O
 ClientSampleId :
 PB163161BSD



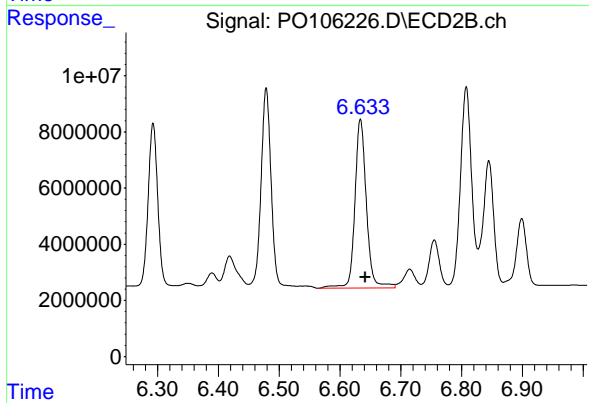
#32 AR-1260-2

R.T.: 6.479 min
 Delta R.T.: -0.008 min
 Response: 81657267
 Conc: 497.58 ng/ml



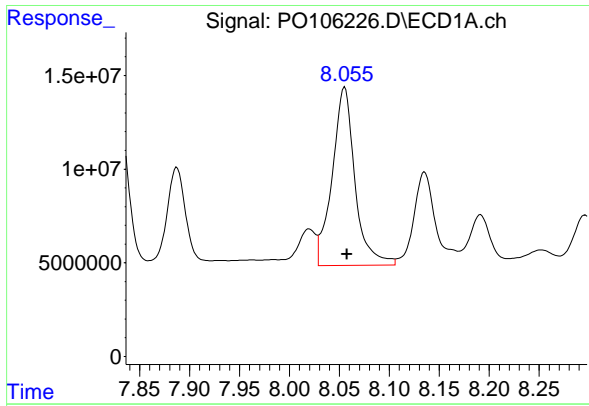
#33 AR-1260-3

R.T.: 7.829 min
 Delta R.T.: -0.003 min
 Response: 120509651
 Conc: 450.59 ng/ml



#33 AR-1260-3

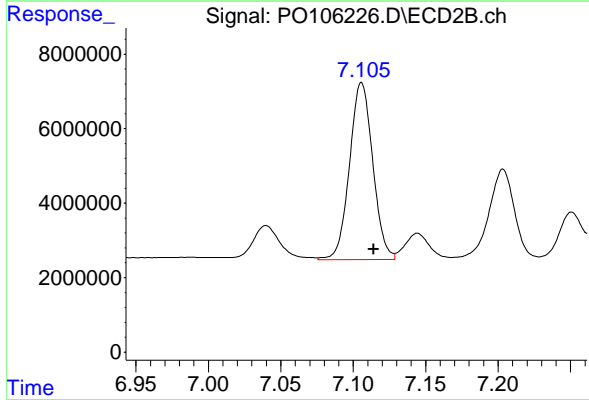
R.T.: 6.634 min
 Delta R.T.: -0.008 min
 Response: 79139581
 Conc: 468.93 ng/ml



#34 AR-1260-4

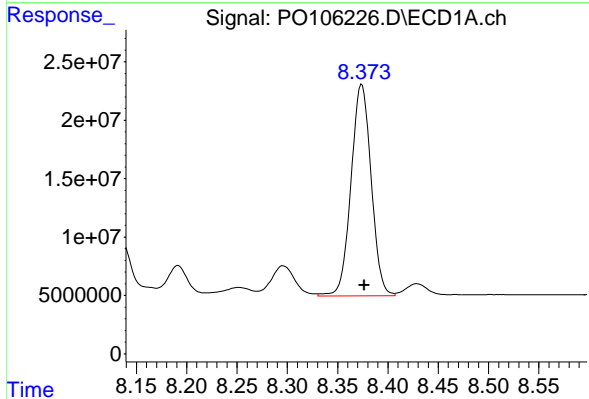
R.T.: 8.055 min
 Delta R.T.: -0.002 min
 Response: 151245428
 Conc: 487.86 ng/ml

Instrument :
 ECD_O
 ClientSampleId :
 PB163161BSD



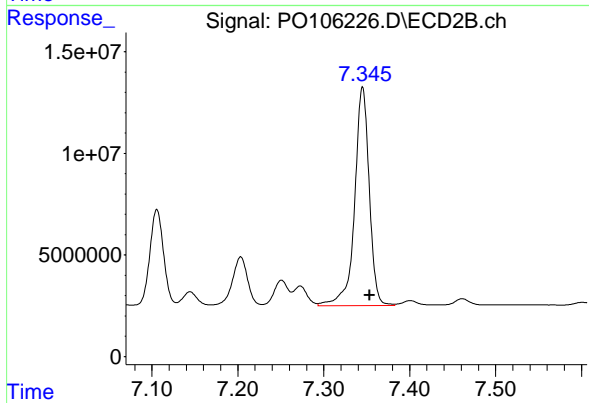
#34 AR-1260-4

R.T.: 7.106 min
 Delta R.T.: -0.008 min
 Response: 53058559
 Conc: 478.78 ng/ml



#35 AR-1260-5

R.T.: 8.374 min
 Delta R.T.: -0.002 min
 Response: 251559356
 Conc: 452.18 ng/ml



#35 AR-1260-5

R.T.: 7.345 min
 Delta R.T.: -0.008 min
 Response: 127279742
 Conc: 469.07 ng/ml