

Data Path : Z:\pestpcbsrv\HPCHEM1\ECD_0\Data\P0090618\
 Data File : P0048771.D
 Signal(s) : Signal #1: ECD1A.CH Signal #2: ECD2B.CH
 Acq On : 06 Sep 2018 9:16
 Operator : SM/SJ
 Sample : AR1660CCC500
 Misc :
 ALS Vial : 3 Sample Multiplier: 1

Instrument :
 ECD_0
 ClientSampleId :
 AR1660CCC500

Manual Integrations
 APPROVED

Sohil
 9/7/2018 12:24:59 PM

Integration File signal 1: autoint1.e
 Integration File signal 2: autoint2.e
 Quant Time: Sep 06 10:55:18 2018
 Quant Method : Z:\pestpcbsrv\HPCHEM1\ECD_0\methods\P0090418.M
 Quant Title : GC EXTRACTABLES
 QLast Update : Thu Sep 06 03:44:31 2018
 Response via : Initial Calibration
 Integrator: ChemStation 6890 Scale Mode: Small noise peaks clipped

Volume Inj. : 2 µl
 Signal #1 Phase : ZB-MR1 Signal #2 Phase: ZB-MR2
 Signal #1 Info : 30Mx0.32mmx 0.50µ Signal #2 Info : 30M x 0.32mm x 0.25µm

Compound	RT#1	RT#2	Resp#1	Resp#2	ng/ml	ng/ml

System Monitoring Compounds						
1) SA Tetrachlo...	4.451	3.529	7046361	7862085	58.400	50.300
2) SA Decachlor...	10.194	8.467	8294431	8762964	59.447	59.268m
Target Compounds						
3) L1 AR-1016-1	5.160	4.193	1862720	2199983	573.675	507.647
4) L1 AR-1016-2	5.355	4.599	1976675	3375336	574.744	524.187
5) L1 AR-1016-3	5.623	4.618	2929625	4549800	580.217	538.837
6) L1 AR-1016-4	5.707	4.672	2679989	3239715	582.271	551.479
7) L1 AR-1016-5	6.101	5.043	2227374	2742145	573.897	530.414
31) L7 AR-1260-1	7.226	6.066	4176545	5777097	506.933	554.944
32) L7 AR-1260-2	7.482	6.252	4980817	7057725	506.873	563.598
33) L7 AR-1260-3	7.766	6.405	6063044	6790299	508.129	572.330
34) L7 AR-1260-4	8.066	6.873	4454489	5342629	518.992	564.697
35) L7 AR-1260-5	8.387	7.113	9117781	12589126	549.206	579.747

(f)=RT Delta > 1/2 Window (#)=Amounts differ by > 25% (m)=manual int.

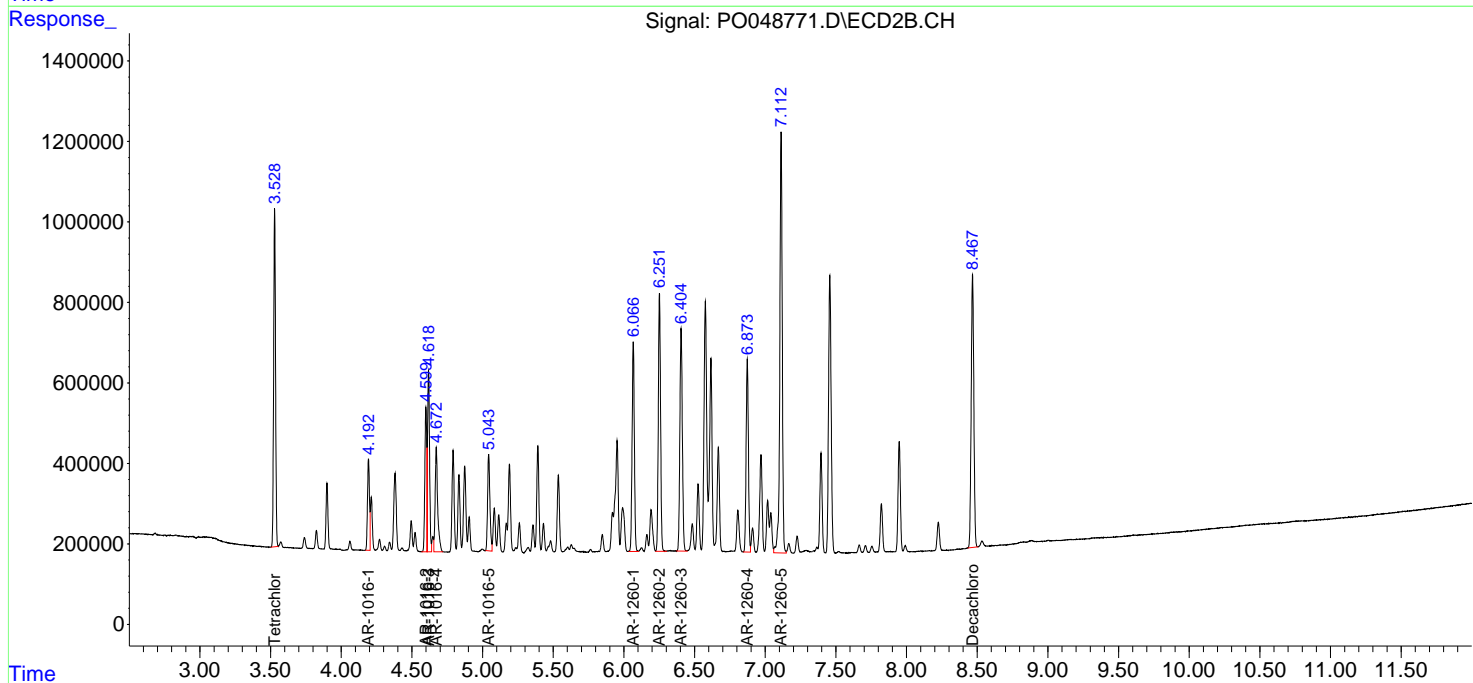
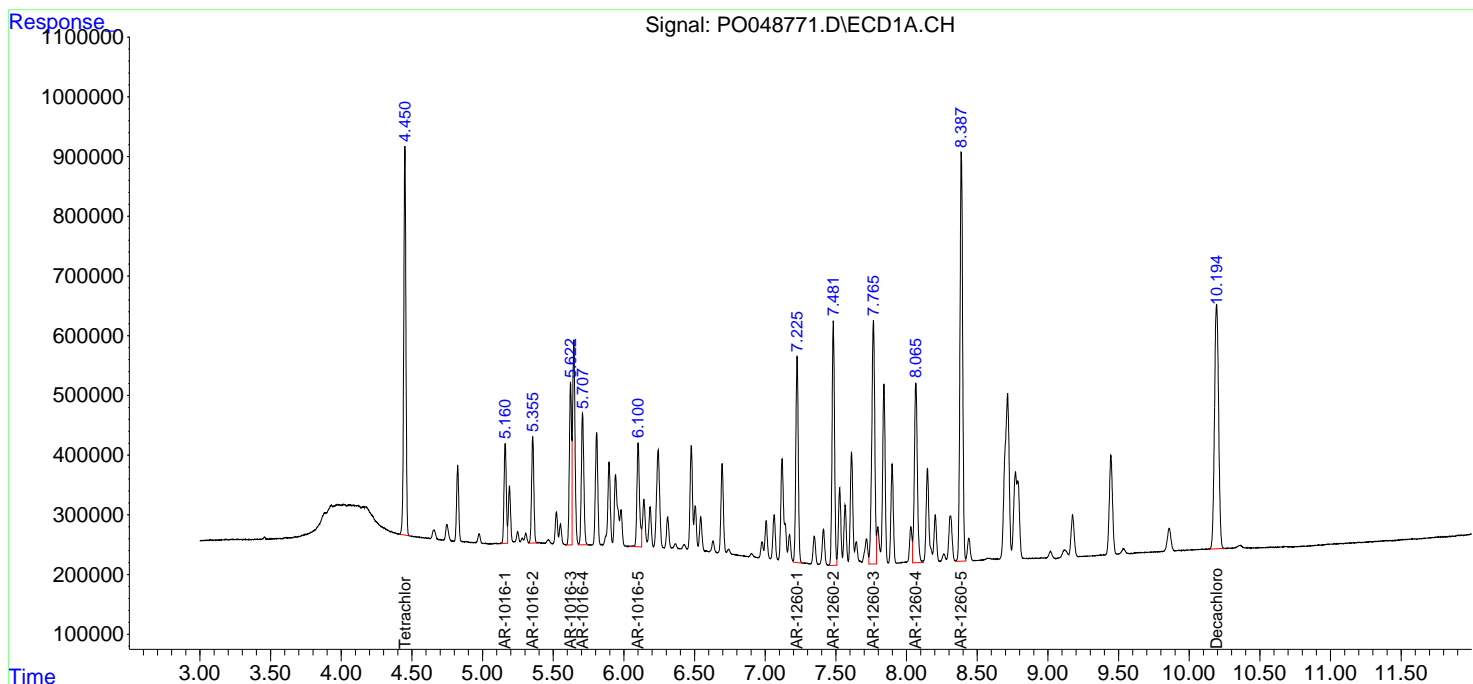
Data Path : Z:\pestpcbsrv\HPCHEM1\ECD_O\Data\P0090618\
 Data File : P0048771.D
 Signal(s) : Signal #1: ECD1A.CH Signal #2: ECD2B.CH
 Acq On : 06 Sep 2018 9:16
 Operator : SM/SJ
 Sample : AR1660CCC500
 Misc :
 ALS Vial : 3 Sample Multiplier: 1

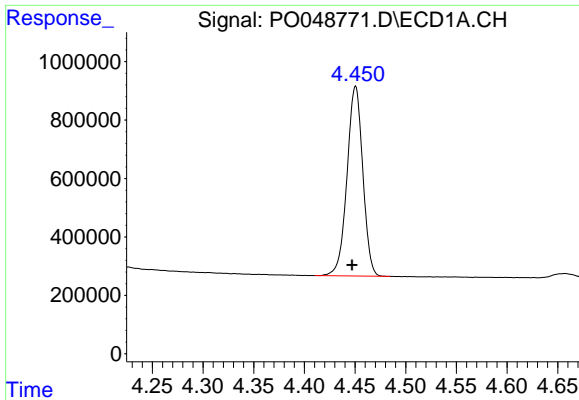
Instrument :
 ECD_O
Client Sampled :
 AR1660CCC500

Manual Integrations
APPROVED
 Sohil
 9/7/2018 12:24:59 PM

Integration File signal 1: autoint1.e
 Integration File signal 2: autoint2.e
 Quant Time: Sep 06 10:55:18 2018
 Quant Method : Z:\pestpcbsrv\HPCHEM1\ECD_O\methods\P0090418.M
 Quant Title : GC EXTRACTABLES
 QLast Update : Thu Sep 06 03:44:31 2018
 Response via : Initial Calibration
 Integrator: ChemStation 6890 Scale Mode: Small noise peaks clipped

Volume Inj. : 2 µl
 Signal #1 Phase : ZB-MR1 Signal #2 Phase: ZB-MR2
 Signal #1 Info : 30Mx0.32mmx 0.50µ Signal #2 Info : 30M x 0.32mm x 0.25µm





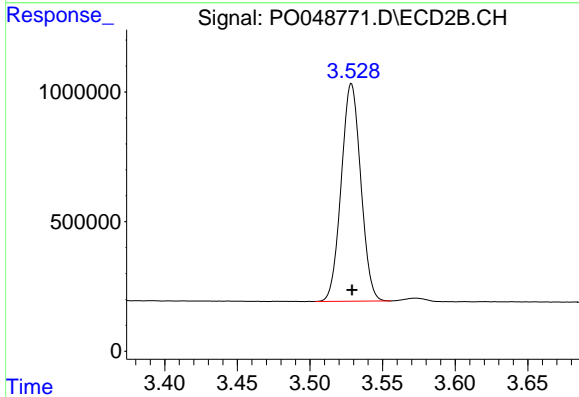
#1 Tetrachloro-m-xylene

R.T.: 4.451 min
 Delta R.T.: 0.004 min
 Response: 7046361
 Conc: 58.40 ng/ml

Instrument :
 ECD_O
 ClientSampled :
 AR1660CCC500

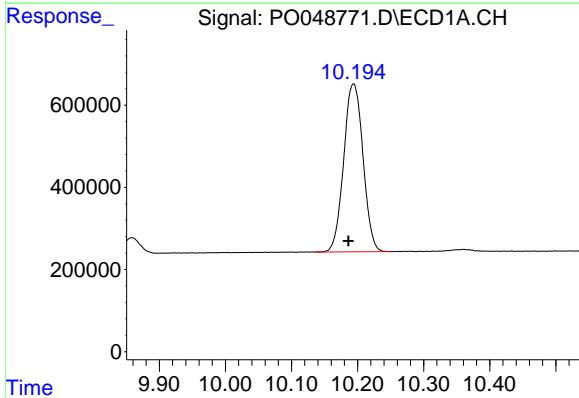
Manual Integrations
 APPROVED

Sohil
 9/7/2018 12:24:59 PM



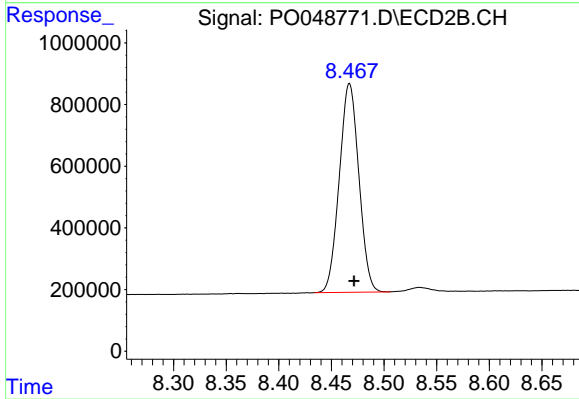
#1 Tetrachloro-m-xylene

R.T.: 3.529 min
 Delta R.T.: 0.000 min
 Response: 7862085
 Conc: 50.30 ng/ml



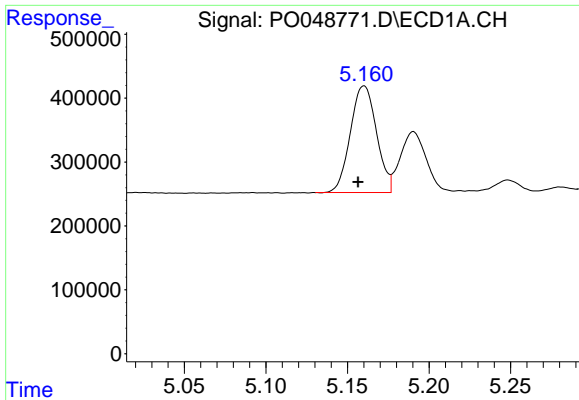
#2 Decachlorobiphenyl

R.T.: 10.194 min
 Delta R.T.: 0.008 min
 Response: 8294431
 Conc: 59.45 ng/ml



#2 Decachlorobiphenyl

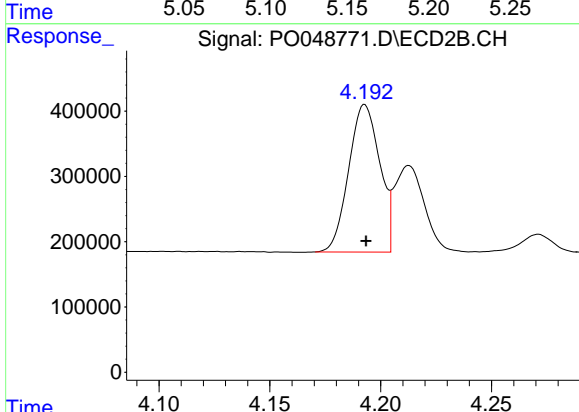
R.T.: 8.467 min
 Delta R.T.: -0.005 min
 Response: 8762964
 Conc: 59.27 ng/ml m



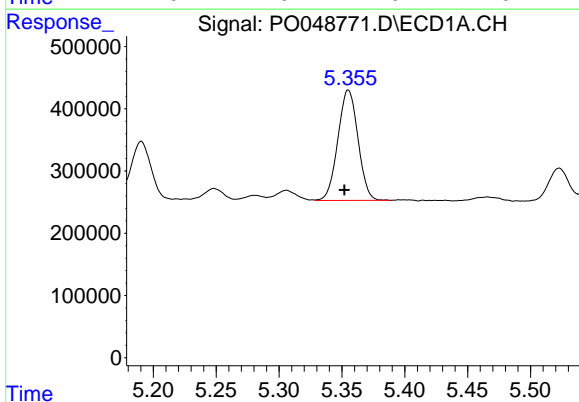
#3 AR-1016-1
 R.T.: 5.160 min
 Delta R.T.: 0.004 min
 Response: 1862720
 Conc: 573.68 ng/ml

Instrument :
 ECD_O
ClientSampled :
 AR1660CCC500

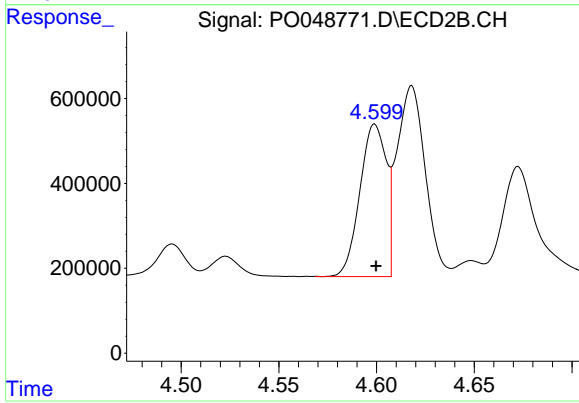
Manual Integrations
APPROVED
 Sohil
 9/7/2018 12:24:59 PM



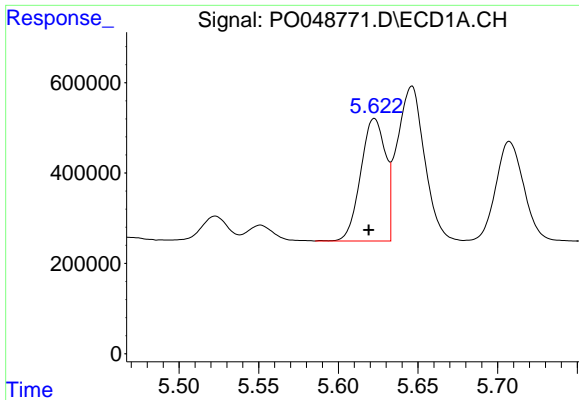
#3 AR-1016-1
 R.T.: 4.193 min
 Delta R.T.: 0.000 min
 Response: 2199983
 Conc: 507.65 ng/ml



#4 AR-1016-2
 R.T.: 5.355 min
 Delta R.T.: 0.003 min
 Response: 1976675
 Conc: 574.74 ng/ml



#4 AR-1016-2
 R.T.: 4.599 min
 Delta R.T.: 0.000 min
 Response: 3375336
 Conc: 524.19 ng/ml

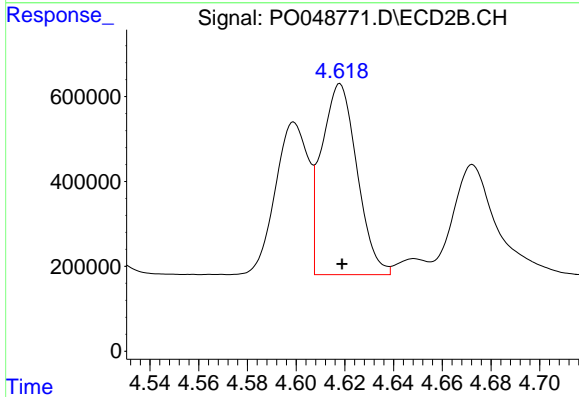


#5 AR-1016-3

R.T.: 5.623 min
 Delta R.T.: 0.004 min
 Response: 2929625
 Conc: 580.22 ng/ml

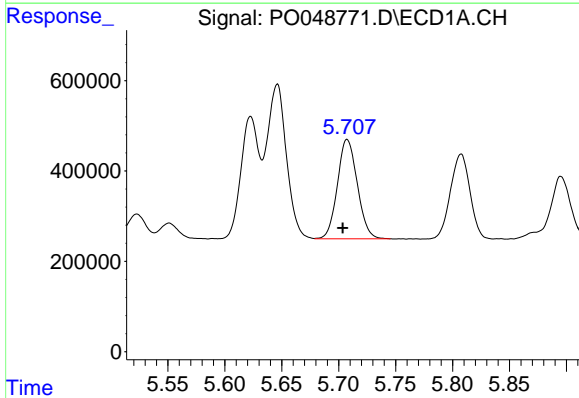
Instrument :
 ECD_O
 ClientSampled :
 AR1660CCC500

Manual Integrations
APPROVED
 Sohil
 9/7/2018 12:24:59 PM



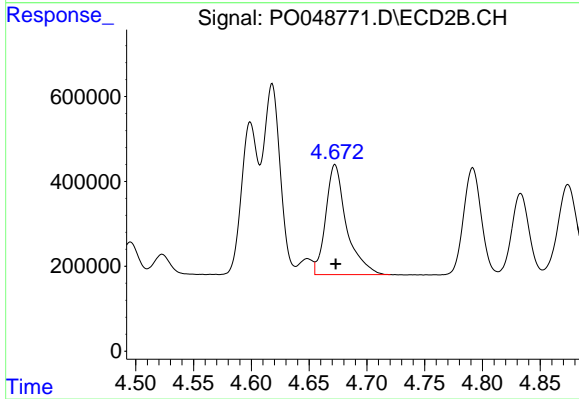
#5 AR-1016-3

R.T.: 4.618 min
 Delta R.T.: 0.000 min
 Response: 4549800
 Conc: 538.84 ng/ml



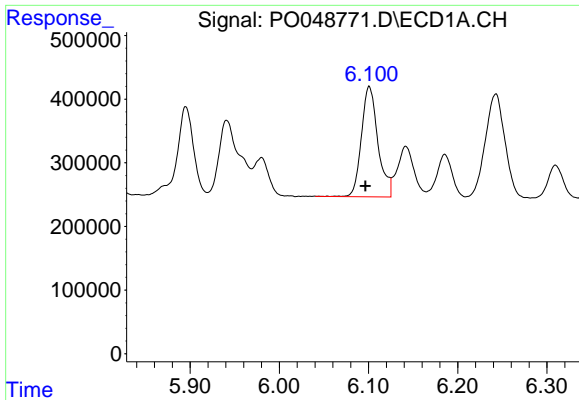
#6 AR-1016-4

R.T.: 5.707 min
 Delta R.T.: 0.004 min
 Response: 2679989
 Conc: 582.27 ng/ml



#6 AR-1016-4

R.T.: 4.672 min
 Delta R.T.: 0.000 min
 Response: 3239715
 Conc: 551.48 ng/ml

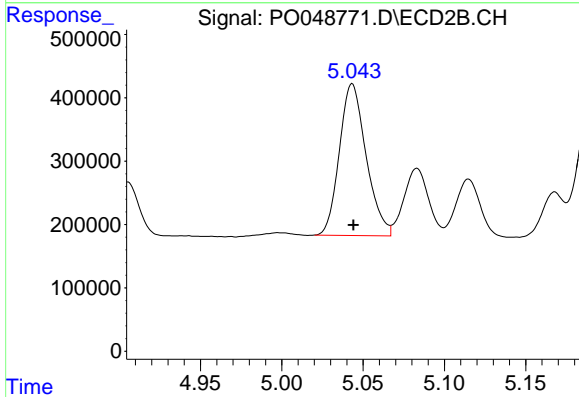


#7 AR-1016-5

R.T.: 6.101 min
 Delta R.T.: 0.004 min
 Response: 2227374
 Conc: 573.90 ng/ml

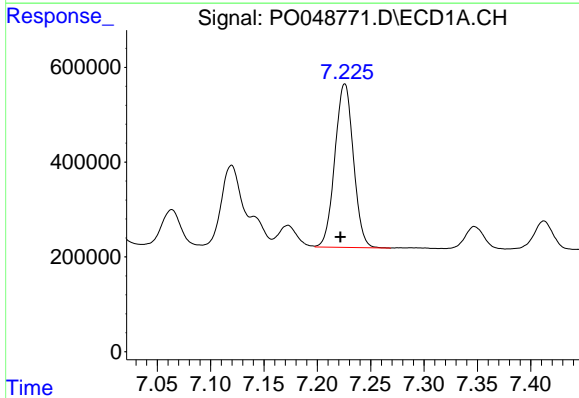
Instrument :
 ECD_O
ClientSampled :
 AR1660CCC500

Manual Integrations
APPROVED
 Sohil
 9/7/2018 12:24:59 PM



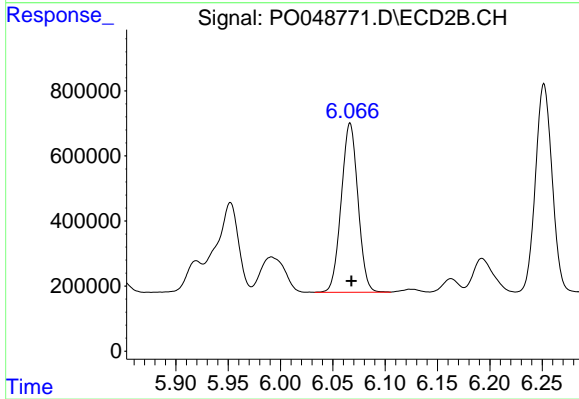
#7 AR-1016-5

R.T.: 5.043 min
 Delta R.T.: 0.000 min
 Response: 2742145
 Conc: 530.41 ng/ml



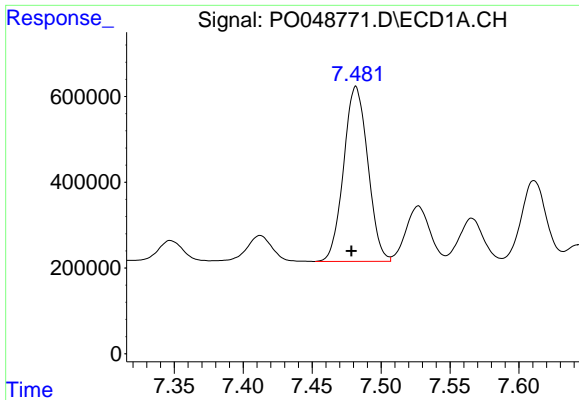
#31 AR-1260-1

R.T.: 7.226 min
 Delta R.T.: 0.004 min
 Response: 4176545
 Conc: 506.93 ng/ml



#31 AR-1260-1

R.T.: 6.066 min
 Delta R.T.: -0.001 min
 Response: 5777097
 Conc: 554.94 ng/ml



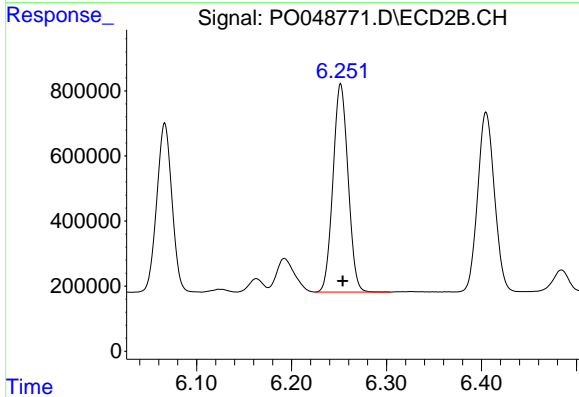
#32 AR-1260-2

R.T.: 7.482 min
 Delta R.T.: 0.003 min
 Response: 4980817
 Conc: 506.87 ng/ml

Instrument :
 ECD_O
 ClientSampleId :
 AR1660CCC500

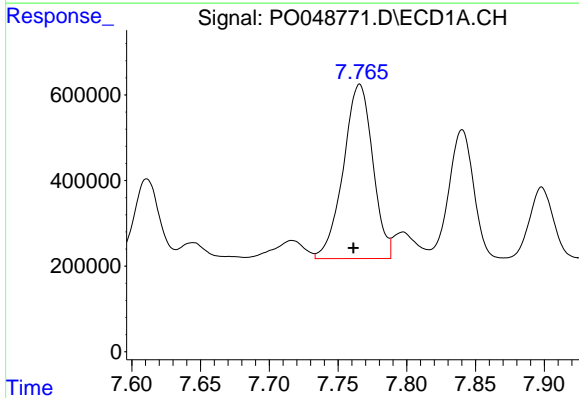
Manual Integrations
 APPROVED

Sohil
 9/7/2018 12:24:59 PM



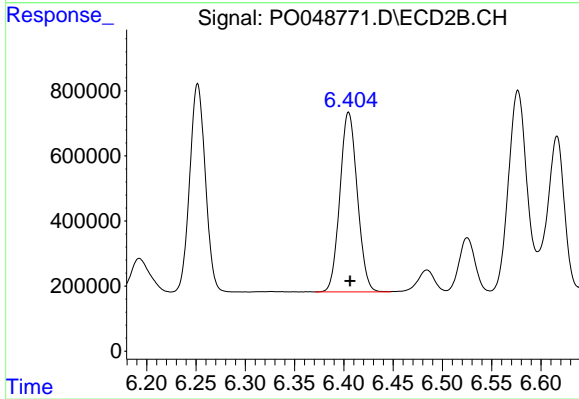
#32 AR-1260-2

R.T.: 6.252 min
 Delta R.T.: -0.002 min
 Response: 7057725
 Conc: 563.60 ng/ml



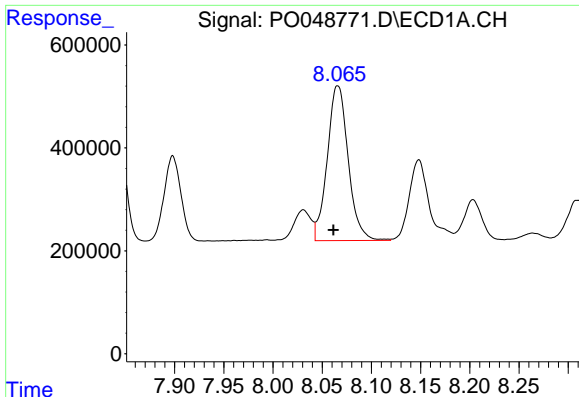
#33 AR-1260-3

R.T.: 7.766 min
 Delta R.T.: 0.004 min
 Response: 6063044
 Conc: 508.13 ng/ml



#33 AR-1260-3

R.T.: 6.405 min
 Delta R.T.: -0.001 min
 Response: 6790299
 Conc: 572.33 ng/ml



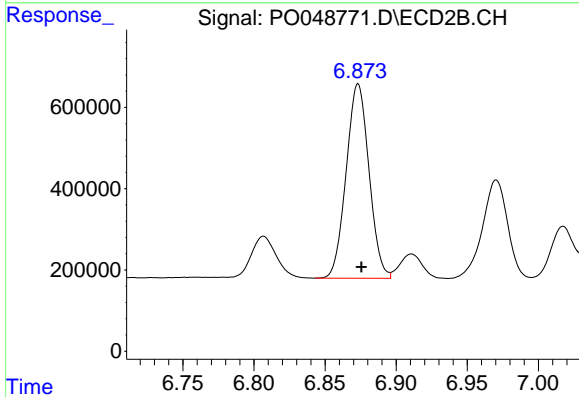
#34 AR-1260-4

R.T.: 8.066 min
 Delta R.T.: 0.004 min
 Response: 4454489
 Conc: 518.99 ng/ml

Instrument :
 ECD_O
 ClientSampled :
 AR1660CCC500

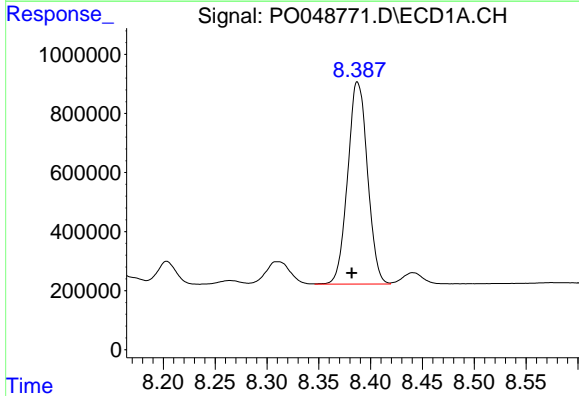
Manual Integrations
 APPROVED

Sohil
 9/7/2018 12:24:59 PM



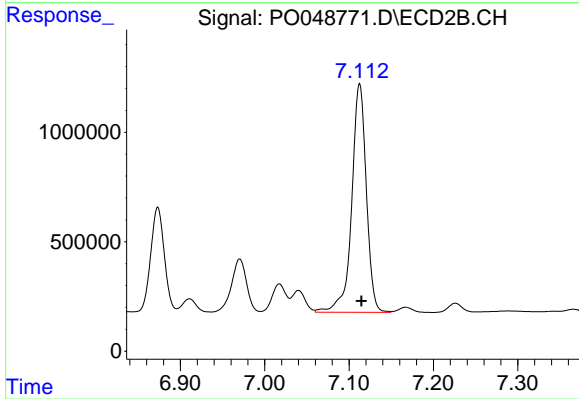
#34 AR-1260-4

R.T.: 6.873 min
 Delta R.T.: -0.002 min
 Response: 5342629
 Conc: 564.70 ng/ml



#35 AR-1260-5

R.T.: 8.387 min
 Delta R.T.: 0.006 min
 Response: 9117781
 Conc: 549.21 ng/ml



#35 AR-1260-5

R.T.: 7.113 min
 Delta R.T.: -0.002 min
 Response: 12589126
 Conc: 579.75 ng/ml