

Data Path : Z:\pestpcbsrv\HPCHEM1\ECD_0\Data\P0090618\
 Data File : P0048778.D
 Signal(s) : Signal #1: ECD1A.CH Signal #2: ECD2B.CH
 Acq On : 06 Sep 2018 11:07
 Operator : SM/SJ
 Sample : J4720-01MS
 Misc :
 ALS Vial : 10 Sample Multiplier: 1

Instrument :
 ECD_0
 ClientSampleId :
 BZTRANS-1MS

Integration File signal 1: autoint1.e
 Integration File signal 2: autoint2.e
 Quant Time: Sep 06 12:06:11 2018
 Quant Method : Z:\pestpcbsrv\HPCHEM1\ECD_0\methods\P0090418.M
 Quant Title : GC EXTRACTABLES
 QLast Update : Thu Sep 06 03:44:31 2018
 Response via : Initial Calibration
 Integrator: ChemStation 6890 Scale Mode: Small noise peaks clipped

Volume Inj. : 2 µl
 Signal #1 Phase : ZB-MR1 Signal #2 Phase: ZB-MR2
 Signal #1 Info : 30Mx0.32mmx 0.50µ Signal #2 Info : 30M x 0.32mm x 0.25µm

Compound	RT#1	RT#2	Resp#1	Resp#2	ng/ml	ng/ml

System Monitoring Compounds						
1) SA Tetrachlo...	4.453	3.532	3079656	3001993	25.524	19.206
2) SA Decachlor...	10.197	8.468	2325240	2446167	16.665	16.545
Target Compounds						
3) L1 AR-1016-1	5.163	4.195	700433	803877	215.718	185.495
4) L1 AR-1016-2	5.358	4.602	712431	1109334	207.149	172.279
5) L1 AR-1016-3	5.626	4.621	1061416	1456171	210.215	172.456
6) L1 AR-1016-4	5.711	4.675	1046444	882870	227.357	150.286 #
7) L1 AR-1016-5	6.103	5.045	2652558	2849350	683.449	551.151
31) L7 AR-1260-1	7.227	6.067	21651044	23719458	2627.921	2278.475
32) L7 AR-1260-2	7.483	6.253	16939754	19854128	1723.876	1585.462
33) L7 AR-1260-3	7.766	6.406	21584793	22789520	1808.970	1920.846
34) L7 AR-1260-4	8.067	6.874	21393202	21935360	2492.518	2318.490
35) L7 AR-1260-5	8.388	7.113	38290997	45346167	2306.443	2088.256

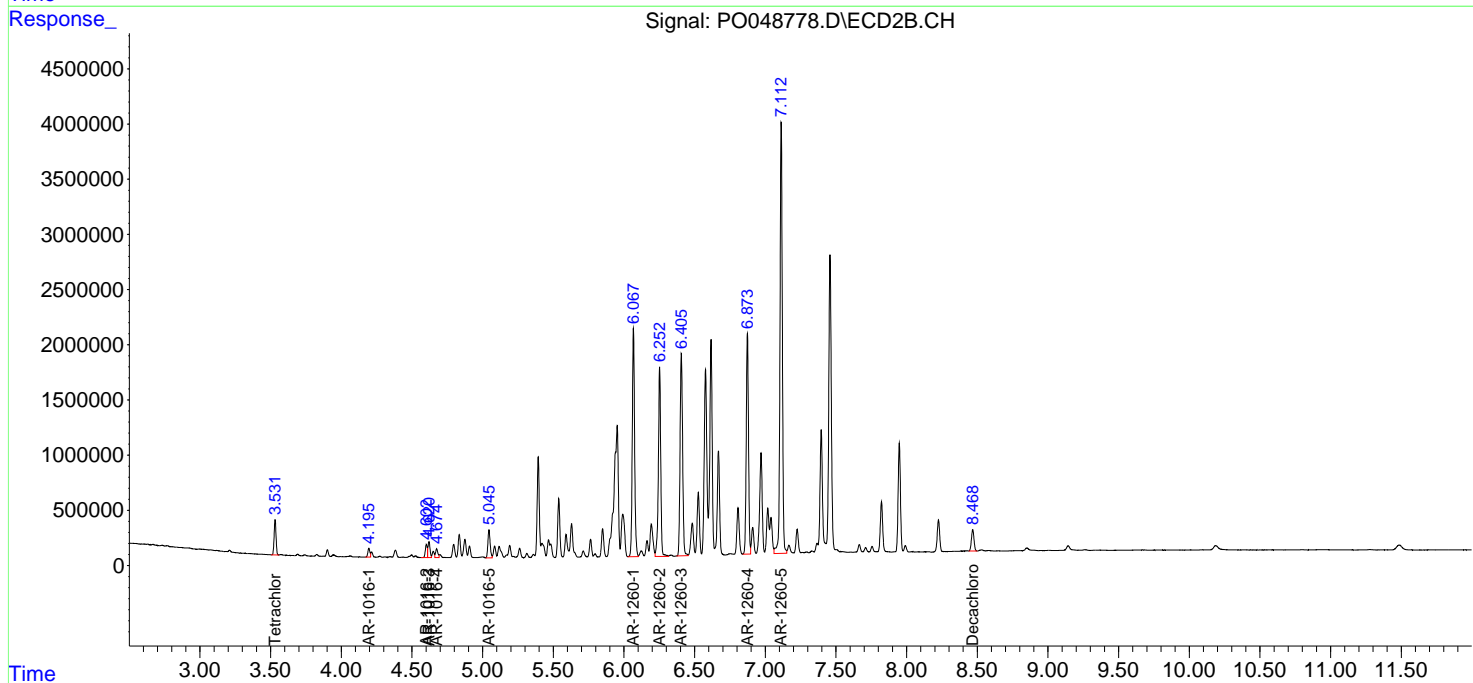
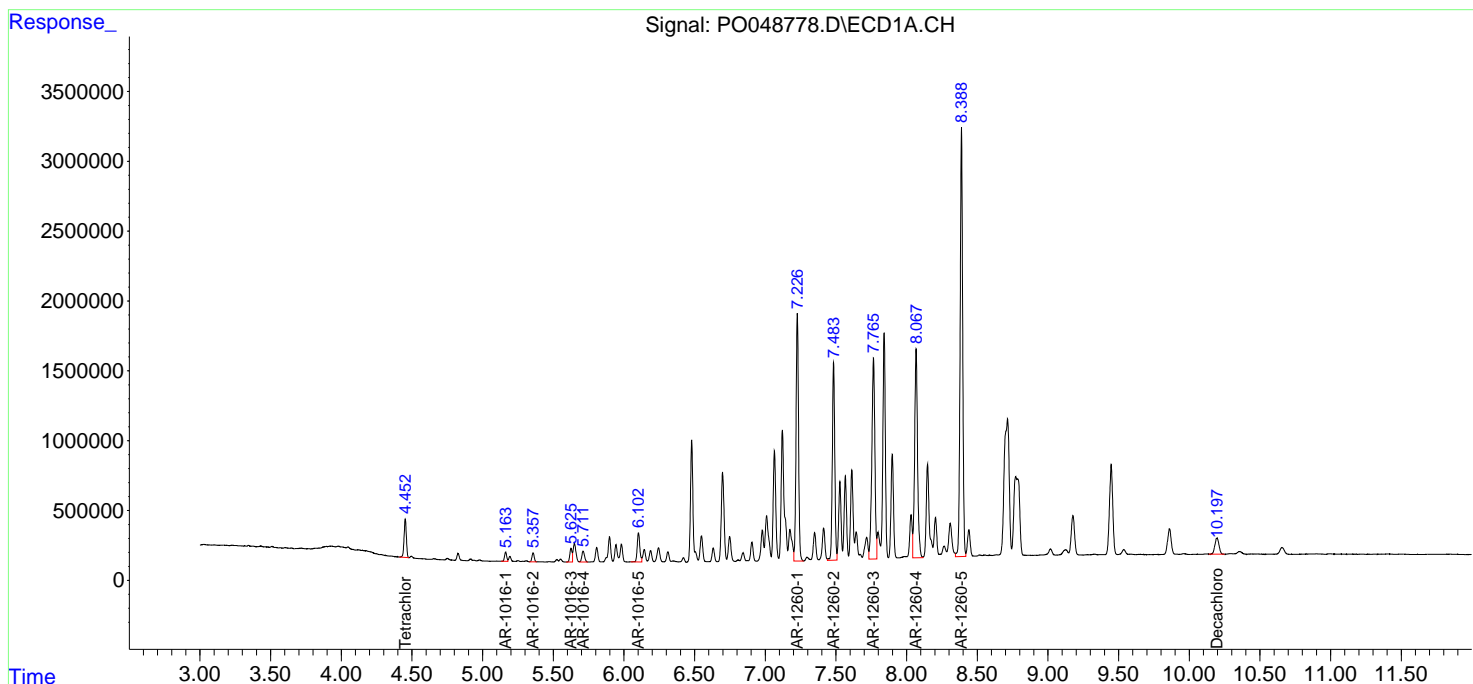
(f)=RT Delta > 1/2 Window (#)=Amounts differ by > 25% (m)=manual int.

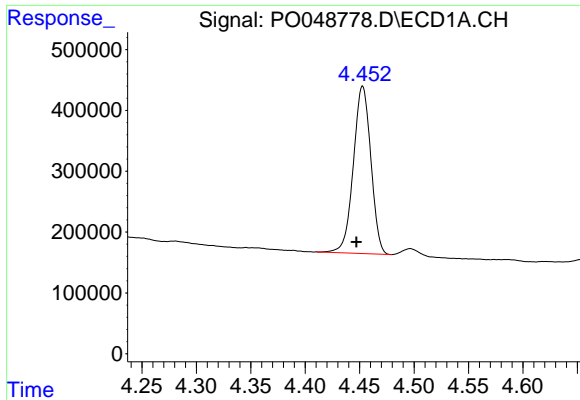
Data Path : Z:\pestpcbsrv\HPCHEM1\ECD_O\Data\PO090618\
 Data File : PO048778.D
 Signal(s) : Signal #1: ECD1A.CH Signal #2: ECD2B.CH
 Acq On : 06 Sep 2018 11:07
 Operator : SM/SJ
 Sample : J4720-01MS
 Misc :
 ALS Vial : 10 Sample Multiplier: 1

Instrument :
 ECD_O
 ClientSampled :
 BZTRANS-1MS

Integration File signal 1: autoint1.e
 Integration File signal 2: autoint2.e
 Quant Time: Sep 06 12:06:11 2018
 Quant Method : Z:\pestpcbsrv\HPCHEM1\ECD_O\methods\PO090418.M
 Quant Title : GC EXTRACTABLES
 QLast Update : Thu Sep 06 03:44:31 2018
 Response via : Initial Calibration
 Integrator: ChemStation 6890 Scale Mode: Small noise peaks clipped

Volume Inj. : 2 µl
 Signal #1 Phase : ZB-MR1 Signal #2 Phase: ZB-MR2
 Signal #1 Info : 30Mx0.32mmx 0.50µ Signal #2 Info : 30M x 0.32mm x 0.25µm

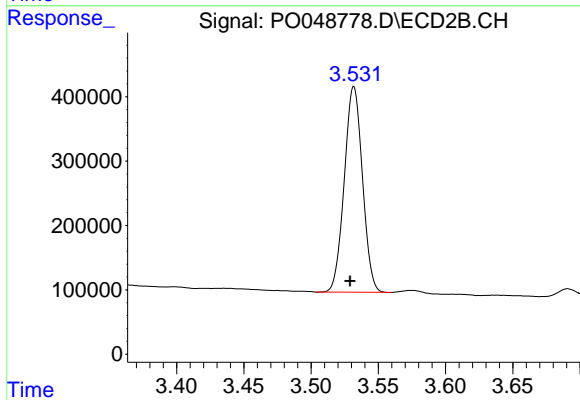




#1 Tetrachloro-m-xylene

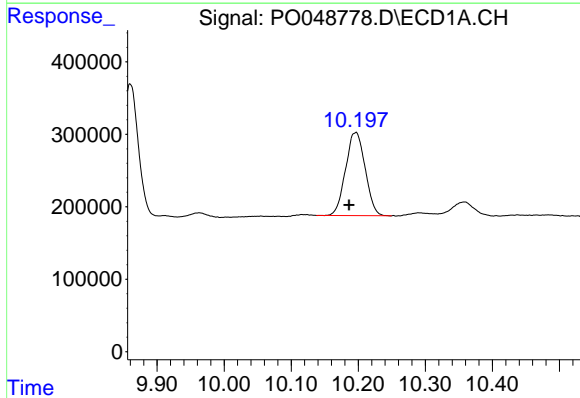
R.T.: 4.453 min
 Delta R.T.: 0.006 min
 Response: 3079656
 Conc: 25.52 ng/ml

Instrument :
 ECD_O
 ClientSampleId :
 BZTRANS-1MS



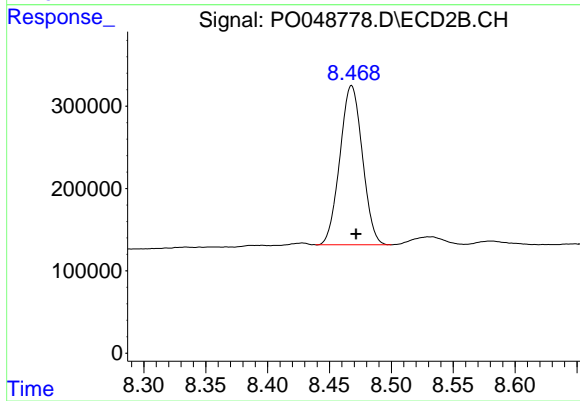
#1 Tetrachloro-m-xylene

R.T.: 3.532 min
 Delta R.T.: 0.003 min
 Response: 3001993
 Conc: 19.21 ng/ml



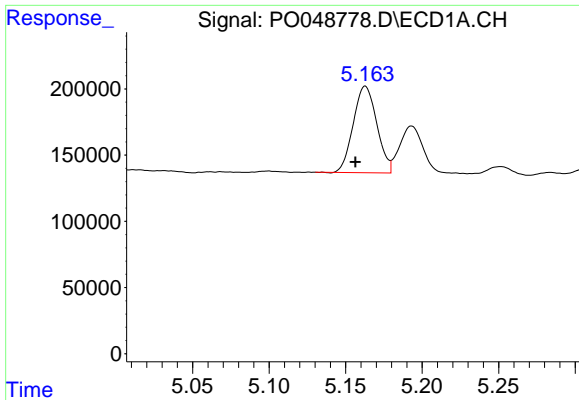
#2 Decachlorobiphenyl

R.T.: 10.197 min
 Delta R.T.: 0.011 min
 Response: 2325240
 Conc: 16.67 ng/ml



#2 Decachlorobiphenyl

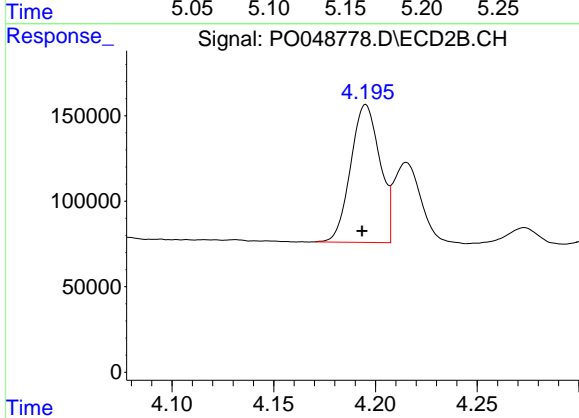
R.T.: 8.468 min
 Delta R.T.: -0.004 min
 Response: 2446167
 Conc: 16.54 ng/ml



#3 AR-1016-1

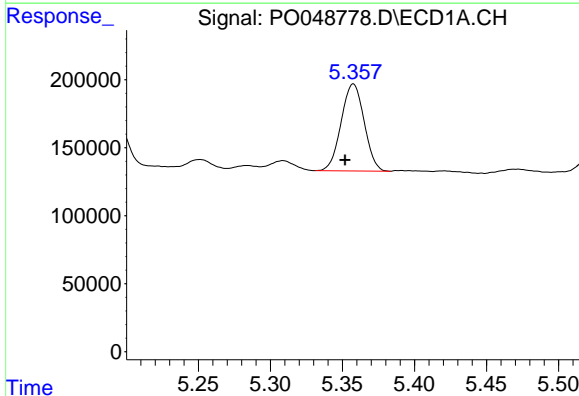
R.T.: 5.163 min
 Delta R.T.: 0.006 min
 Response: 700433
 Conc: 215.72 ng/ml

Instrument :
 ECD_O
 ClientSampleId :
 BZTRANS-1MS



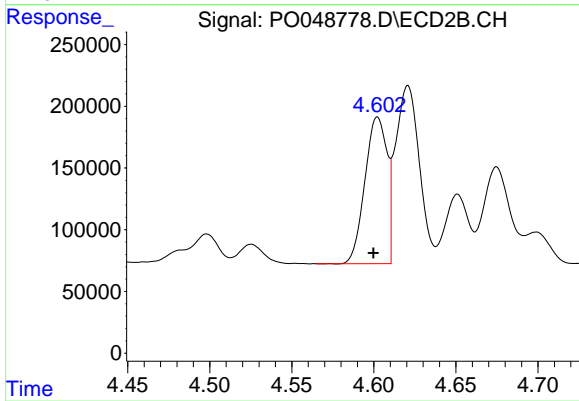
#3 AR-1016-1

R.T.: 4.195 min
 Delta R.T.: 0.002 min
 Response: 803877
 Conc: 185.50 ng/ml



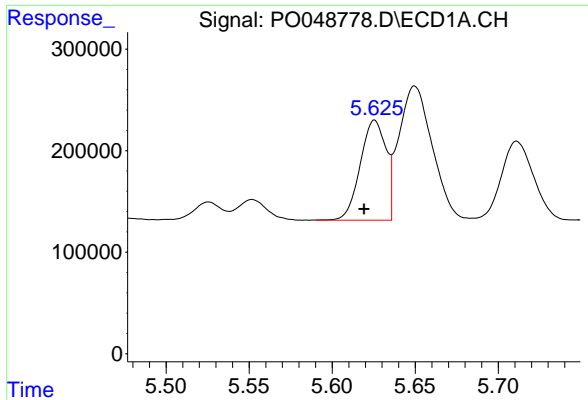
#4 AR-1016-2

R.T.: 5.358 min
 Delta R.T.: 0.006 min
 Response: 712431
 Conc: 207.15 ng/ml



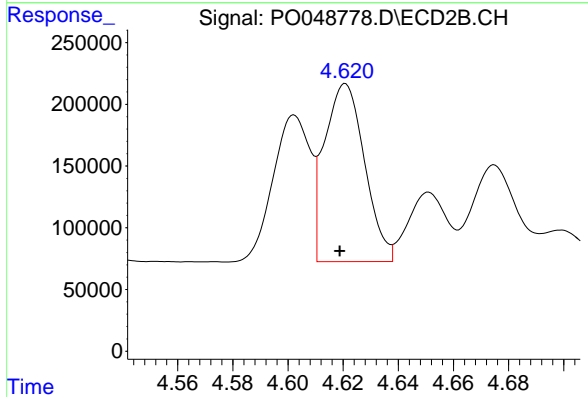
#4 AR-1016-2

R.T.: 4.602 min
 Delta R.T.: 0.003 min
 Response: 1109334
 Conc: 172.28 ng/ml

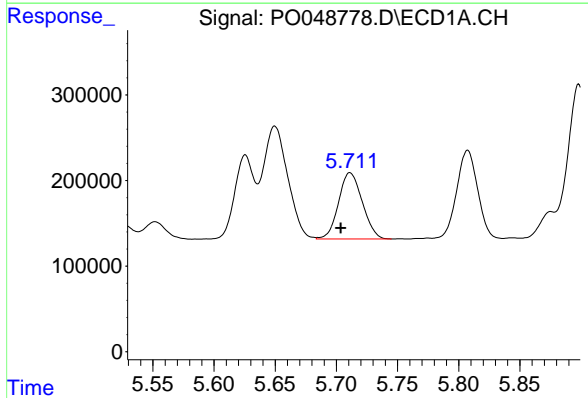


#5 AR-1016-3
 R.T.: 5.626 min
 Delta R.T.: 0.006 min
 Response: 1061416
 Conc: 210.22 ng/ml

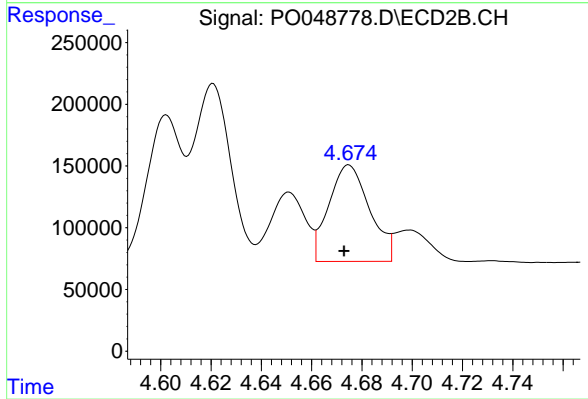
Instrument :
 ECD_O
 ClientSampleId :
 BZTRANS-1MS



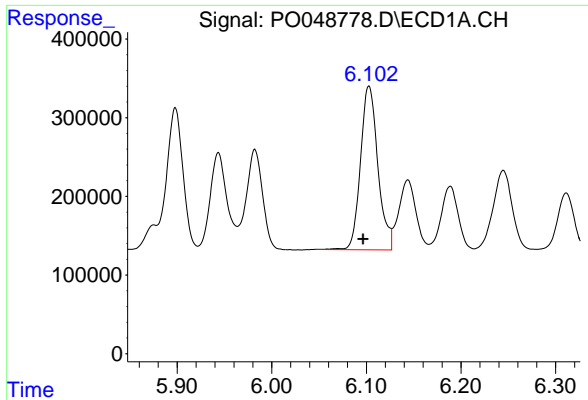
#5 AR-1016-3
 R.T.: 4.621 min
 Delta R.T.: 0.002 min
 Response: 1456171
 Conc: 172.46 ng/ml



#6 AR-1016-4
 R.T.: 5.711 min
 Delta R.T.: 0.008 min
 Response: 1046444
 Conc: 227.36 ng/ml

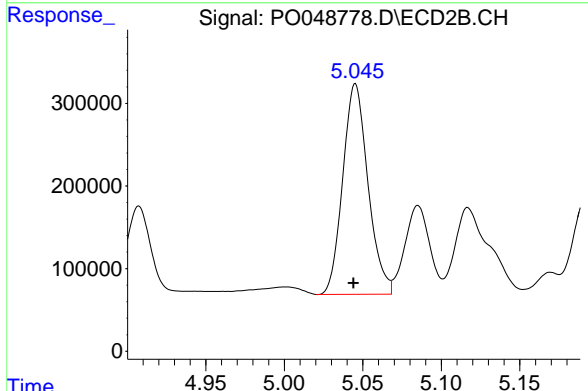


#6 AR-1016-4
 R.T.: 4.675 min
 Delta R.T.: 0.002 min
 Response: 882870
 Conc: 150.29 ng/ml

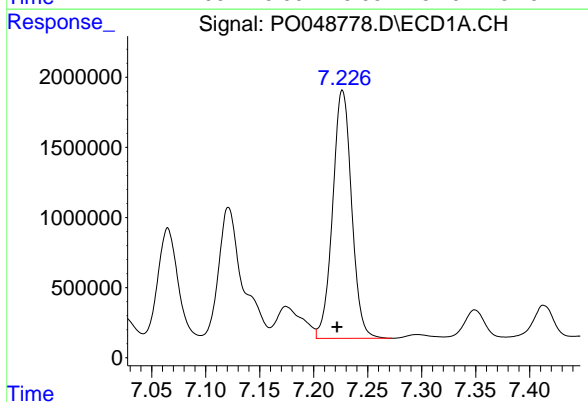


#7 AR-1016-5
 R.T.: 6.103 min
 Delta R.T.: 0.006 min
 Response: 2652558
 Conc: 683.45 ng/ml

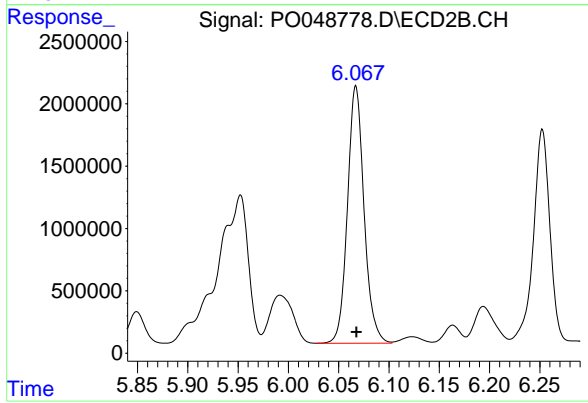
Instrument :
 ECD_O
ClientSampled :
 BZTRANS-1MS



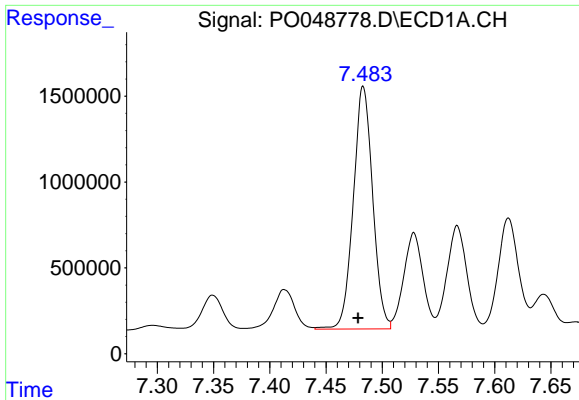
#7 AR-1016-5
 R.T.: 5.045 min
 Delta R.T.: 0.001 min
 Response: 2849350
 Conc: 551.15 ng/ml



#31 AR-1260-1
 R.T.: 7.227 min
 Delta R.T.: 0.005 min
 Response: 21651044
 Conc: 2627.92 ng/ml



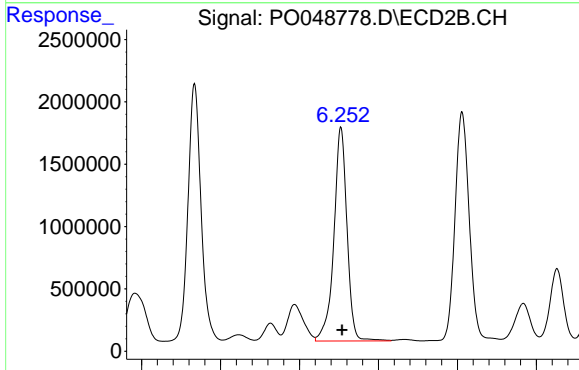
#31 AR-1260-1
 R.T.: 6.067 min
 Delta R.T.: 0.000 min
 Response: 23719458
 Conc: 2278.47 ng/ml



#32 AR-1260-2

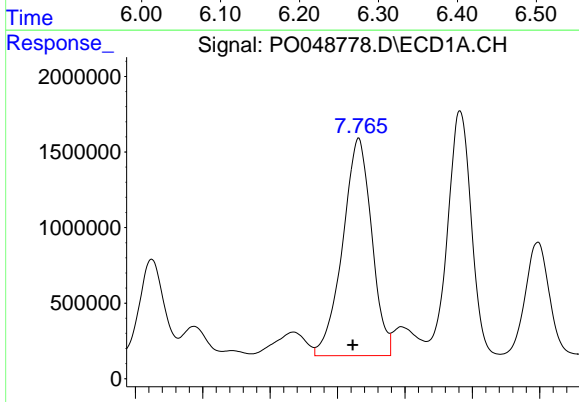
R.T.: 7.483 min
 Delta R.T.: 0.005 min
 Response: 16939754
 Conc: 1723.88 ng/ml

Instrument :
 ECD_O
 ClientSampleId :
 BZTRANS-1MS



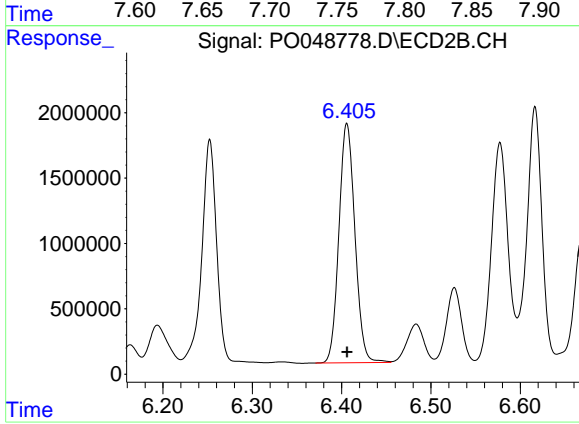
#32 AR-1260-2

R.T.: 6.253 min
 Delta R.T.: -0.001 min
 Response: 19854128
 Conc: 1585.46 ng/ml



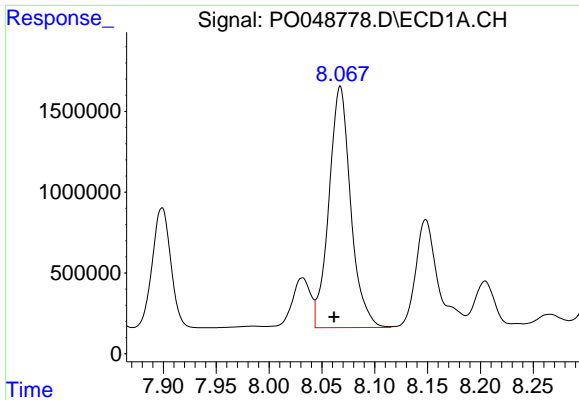
#33 AR-1260-3

R.T.: 7.766 min
 Delta R.T.: 0.005 min
 Response: 21584793
 Conc: 1808.97 ng/ml



#33 AR-1260-3

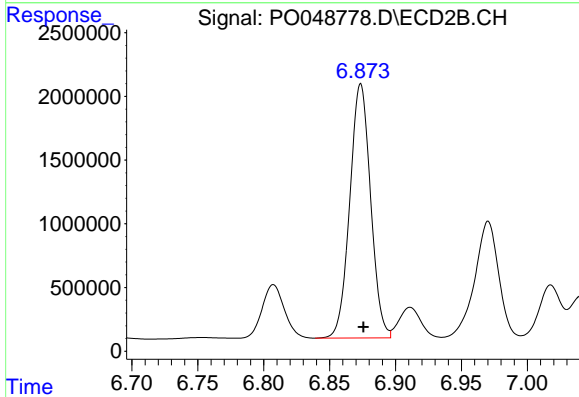
R.T.: 6.406 min
 Delta R.T.: 0.000 min
 Response: 22789520
 Conc: 1920.85 ng/ml



#34 AR-1260-4

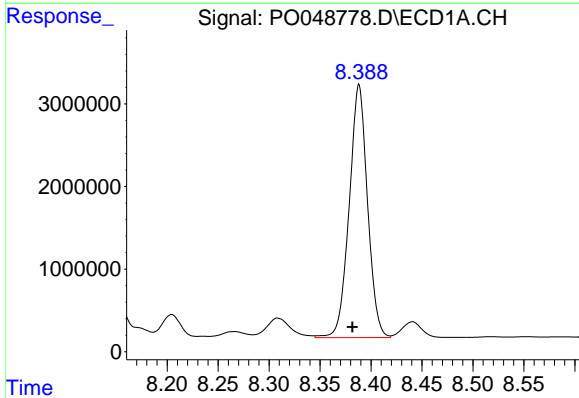
R.T.: 8.067 min
 Delta R.T.: 0.006 min
 Response: 21393202
 Conc: 2492.52 ng/ml

Instrument :
 ECD_O
 ClientSampleId :
 BZTRANS-1MS



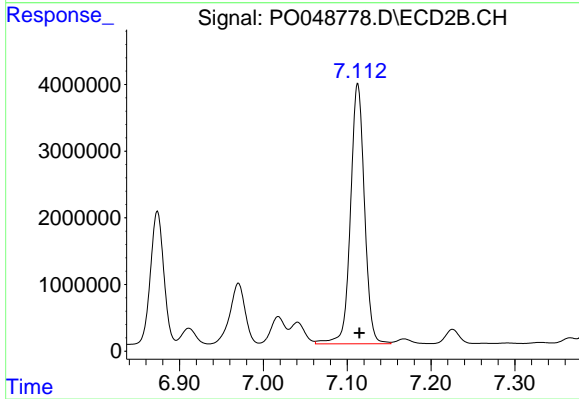
#34 AR-1260-4

R.T.: 6.874 min
 Delta R.T.: -0.002 min
 Response: 21935360
 Conc: 2318.49 ng/ml



#35 AR-1260-5

R.T.: 8.388 min
 Delta R.T.: 0.007 min
 Response: 38290997
 Conc: 2306.44 ng/ml



#35 AR-1260-5

R.T.: 7.113 min
 Delta R.T.: -0.002 min
 Response: 45346167
 Conc: 2088.26 ng/ml