

Data Path : Z:\pestpcbsrv\HPCHEM1\ECD_0\Data\P0090622\
 Data File : P0089286.D
 Signal(s) : Signal #1: ECD1A.ch Signal #2: ECD2B.ch
 Acq On : 06 Sep 2022 09:01
 Operator : YP/AJ
 Sample : HEXANE
 Misc :
 ALS Vial : 1 Sample Multiplier: 1

Instrument :
 ECD_0
 ClientSampleId :

Integration File signal 1: autoint1.e
 Integration File signal 2: autoint2.e
 Quant Time: Sep 06 12:39:32 2022
 Quant Method : Z:\pestpcbsrv\HPCHEM1\ECD_0\methods\P0082922.M
 Quant Title : GC EXTRACTABLES
 QLast Update : Mon Aug 29 17:48:02 2022
 Response via : Initial Calibration
 Integrator: ChemStation

Volume Inj. : 2 µl
 Signal #1 Phase : ZB-MR2 Signal #2 Phase: ZB-MR2
 Signal #1 Info : 30Mx0.32mmx 0.50µ Signal #2 Info : 30M x 0.32mm x 0.25µm

Compound	RT#1	RT#2	Resp#1	Resp#2	ng/ml	ng/ml
System Monitoring Compounds						
2) SA Decachlor...	10.321f	0.000	269648	0	0.117	N.D. #
Target Compounds						
3) L1 AR-1016-1	5.625	4.608f	83531	788188	0.743	21.825 #
4) L1 AR-1016-2	5.625	4.746f	83531	9251	0.530	0.187 #
5) L1 AR-1016-3	5.683	4.910f	56454	131423	0.579	4.941 #
6) L1 AR-1016-4	5.797	4.910	173239	131423	2.202	6.106 #
7) L1 AR-1016-5	6.087	5.107	28043	57560	0.365	1.973 #
8) L2 AR-1221-1	4.625	3.760f	84094	364640	1.978	31.867 #
9) L2 AR-1221-2	4.736	0.000	148798	0	4.762	N.D. #
10) L2 AR-1221-3	4.788	0.000	57067	0	0.615	N.D. #
11) L3 AR-1232-1	4.788	0.000	57067	0	0.776	N.D. #
12) L3 AR-1232-2	5.154	4.746f	875029	9251	23.334	0.437 #
13) L3 AR-1232-3	5.625	4.910f	83531	131423	1.251	11.790 #
14) L3 AR-1232-4	5.797	4.910	173239	131423	5.269	12.873 #
15) L3 AR-1232-5	5.881	5.107	91021	57560	3.368	4.932 #
16) L4 AR-1242-1	5.625	4.608f	83531	788188	0.945	27.057 #
17) L4 AR-1242-2	5.625	4.746f	83531	9251	0.675	0.234 #
18) L4 AR-1242-3	5.683	4.910f	56454	131423	0.734	6.168 #
19) L4 AR-1242-4	5.797	4.910	173239	131423	2.789	6.040 #
20) L4 AR-1242-5	6.535	5.455	560411	411084	8.706	15.049 #
21) L5 AR-1248-1	5.625	4.608f	83531	788188	1.213	35.094 #
22) L5 AR-1248-2	5.881	4.910	91021	131423	0.922	4.018 #
23) L5 AR-1248-3	6.087	4.910	28043	131423	0.268	3.855 #
24) L5 AR-1248-4	6.503	5.107	705793	57560	6.134	1.412 #
25) L5 AR-1248-5	6.535	5.511	560411	614905	4.951	15.474 #
26) L6 AR-1254-1	6.465	5.455	462112	411084	4.018	6.948 #
27) L6 AR-1254-2	6.692	5.610	964366	378101	5.667	7.412 #
28) L6 AR-1254-3	7.067	0.000	1705309	0	9.819	N.D. #
29) L6 AR-1254-4	7.345	0.000	170640	0	1.367	N.D. #
30) L6 AR-1254-5	7.772	0.000	390961	0	3.035	N.D. #
31) L7 AR-1260-1	7.230	0.000	221183	0	1.643	N.D. #
32) L7 AR-1260-2	7.477	6.316	158374	767324	1.038	11.292 #
33) L7 AR-1260-3	7.840	0.000	78927	0	0.706	N.D. #
34) L7 AR-1260-4	8.058	0.000	172144	0	1.394	N.D. #
35) L7 AR-1260-5	8.395	0.000	222935	0	0.935	N.D. #
36) L8 AR-1262-1	7.840	0.000	78927	0	0.523	N.D. #
37) L8 AR-1262-2	8.395	0.000	222935	0	0.876	N.D. #
38) L8 AR-1262-3	8.705	0.000	298583	0	1.746	N.D. #
39) L8 AR-1262-4	8.813	0.000	121375	0	1.737	N.D. #
40) L8 AR-1262-5	9.485	0.000	247795	0	2.612	N.D. #
41) L9 AR-1268-1	8.705	0.000	298583	0	1.032	N.D. #
42) L9 AR-1268-2	8.813	0.000	121375	0	0.454	N.D. #

Data Path : Z:\pestpcbsrv\HPCHEM1\ECD_0\Data\P0090622\
 Data File : P0089286.D
 Signal(s) : Signal #1: ECD1A.ch Signal #2: ECD2B.ch
 Acq On : 06 Sep 2022 09:01
 Operator : YP/AJ
 Sample : HEXANE
 Misc :
 ALS Vial : 1 Sample Multiplier: 1

Instrument :
 ECD_0
 ClientSampleId :

Integration File signal 1: autoint1.e
 Integration File signal 2: autoint2.e
 Quant Time: Sep 06 12:39:32 2022
 Quant Method : Z:\pestpcbsrv\HPCHEM1\ECD_0\methods\P0082922.M
 Quant Title : GC EXTRACTABLES
 QLast Update : Mon Aug 29 17:48:02 2022
 Response via : Initial Calibration
 Integrator: ChemStation

Volume Inj. : 2 µl
 Signal #1 Phase : ZB-MR1 Signal #2 Phase: ZB-MR2
 Signal #1 Info : 30Mx0.32mmx 0.50µ Signal #2 Info : 30M x 0.32mm x 0.25µm

	Compound	RT#1	RT#2	Resp#1	Resp#2	ng/ml	ng/ml
43)	L9 AR-1268-3	9.045	0.000	123439	0	0.532	N.D. #
44)	L9 AR-1268-4	9.485	0.000	247795	0	2.508	N.D. #
45)	L9 AR-1268-5	9.909	0.000	2731620	0	3.749	N.D. #

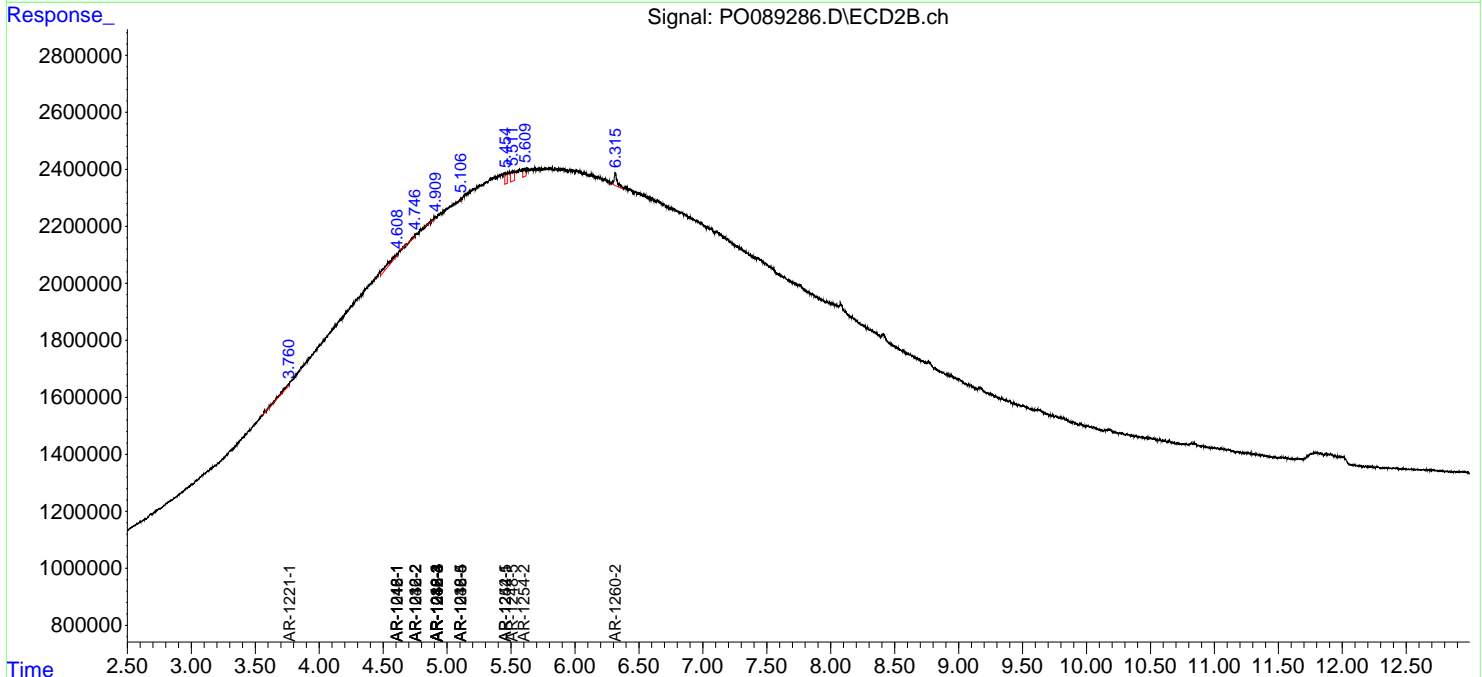
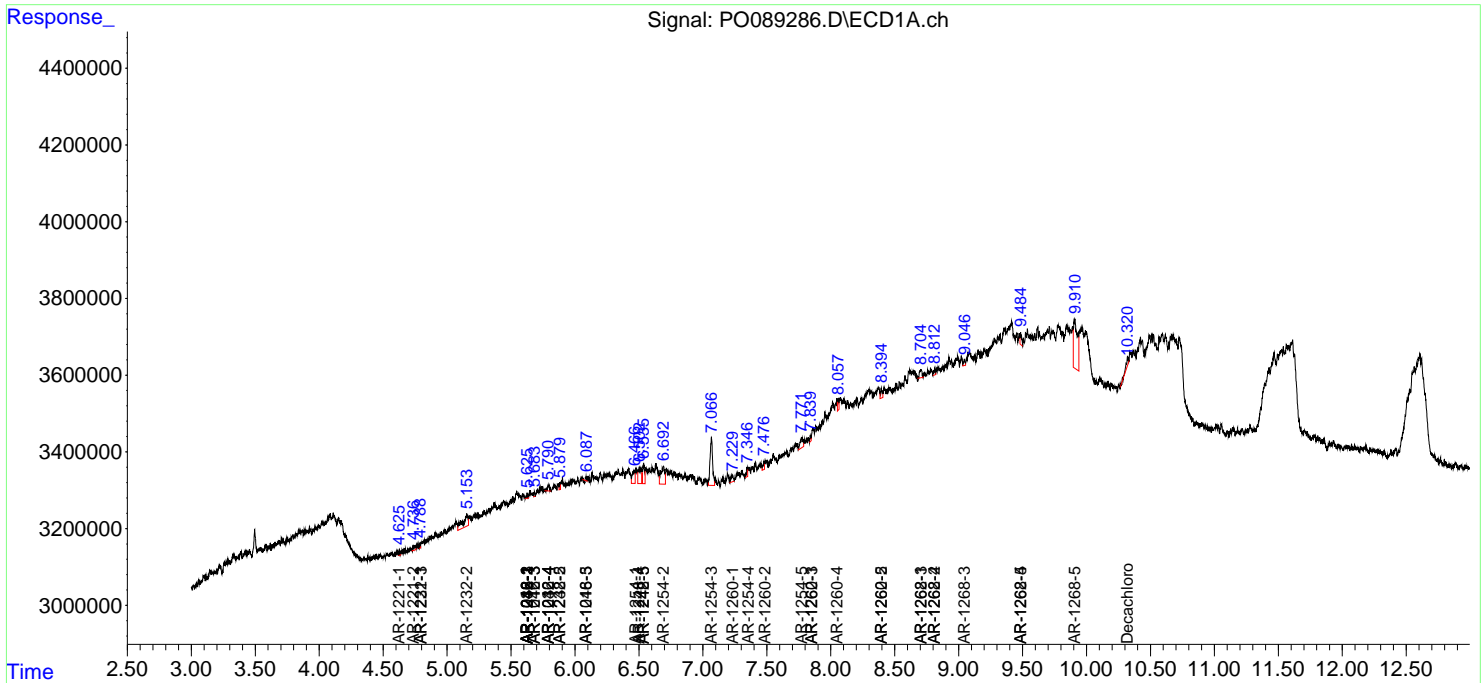
(f)=RT Delta > 1/2 Window (#)=Amounts differ by > 25% (m)=manual int.

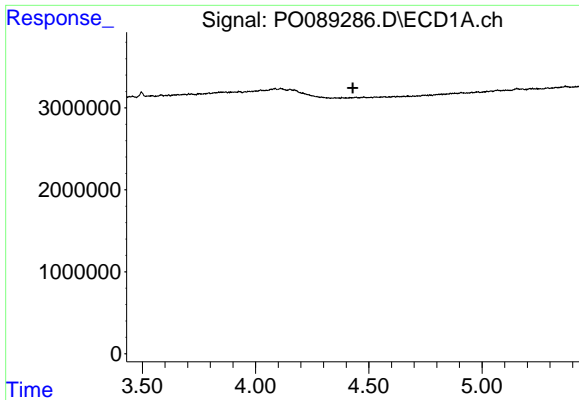
Data Path : Z:\pestpcbsrv\HPCHEM1\ECD_O\Data\PO089286.D
 Data File : PO089286.D
 Signal(s) : Signal #1: ECD1A.ch Signal #2: ECD2B.ch
 Acq On : 06 Sep 2022 09:01
 Operator : YP/AJ
 Sample : HEXANE
 Misc :
 ALS Vial : 1 Sample Multiplier: 1

Instrument :
 ECD_O
 ClientSampleId :

Integration File signal 1: autoint1.e
 Integration File signal 2: autoint2.e
 Quant Time: Sep 06 12:39:32 2022
 Quant Method : Z:\pestpcbsrv\HPCHEM1\ECD_O\methods\PO082922.M
 Quant Title : GC EXTRACTABLES
 QLast Update : Mon Aug 29 17:48:02 2022
 Response via : Initial Calibration
 Integrator: ChemStation

Volume Inj. : 2 µl
 Signal #1 Phase : ZB-MR1 Signal #2 Phase: ZB-MR2
 Signal #1 Info : 30Mx0.32mmx 0.50µ Signal #2 Info : 30M x 0.32mm x 0.25µm

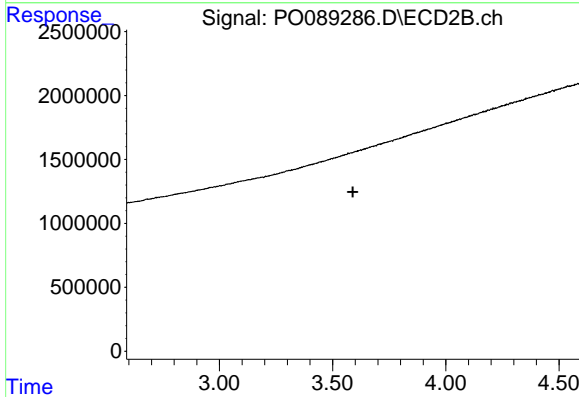




#1 Tetrachloro-m-xylene

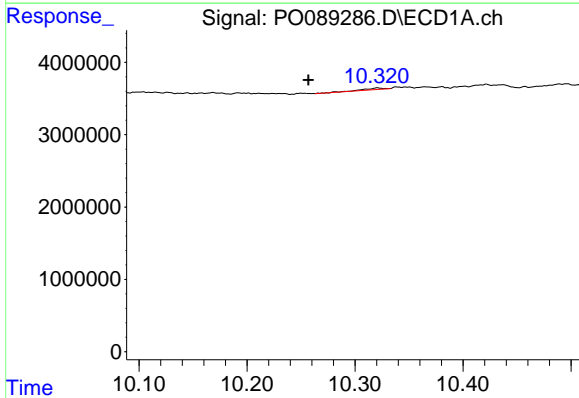
R.T.: 0.000 min
 Exp R.T. : 4.430 min
 Response: 0
 Conc: N.D.

Instrument :
 ECD_O
 ClientSampleId :



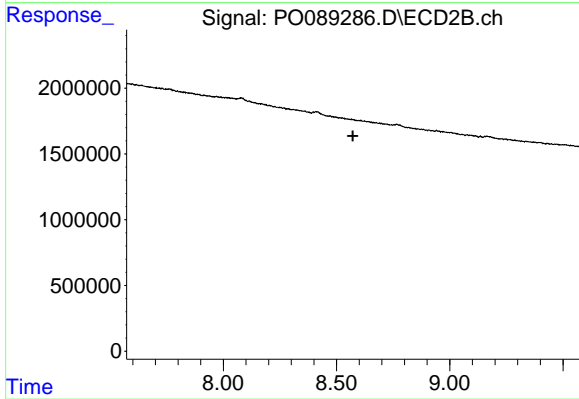
#1 Tetrachloro-m-xylene

R.T.: 0.000 min
 Exp R.T. : 3.589 min
 Response: 0
 Conc: N.D.



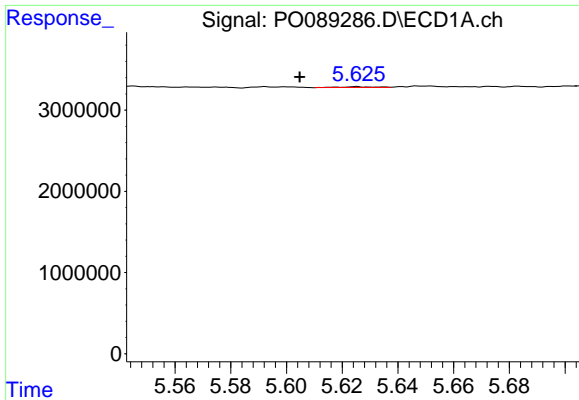
#2 Decachlorobiphenyl

R.T.: 10.321 min
 Delta R.T.: 0.064 min
 Response: 269648
 Conc: 0.12 ng/ml



#2 Decachlorobiphenyl

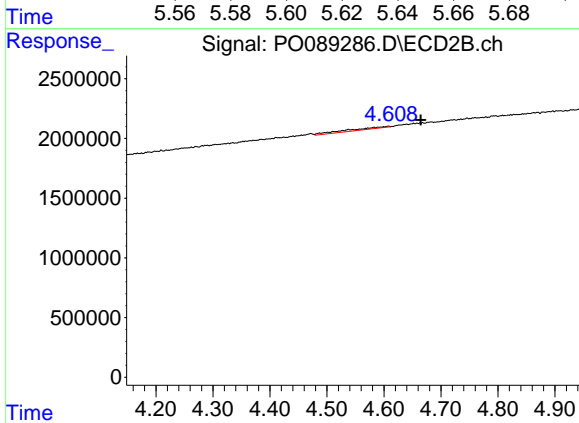
R.T.: 0.000 min
 Exp R.T. : 8.572 min
 Response: 0
 Conc: N.D.



#3 AR-1016-1

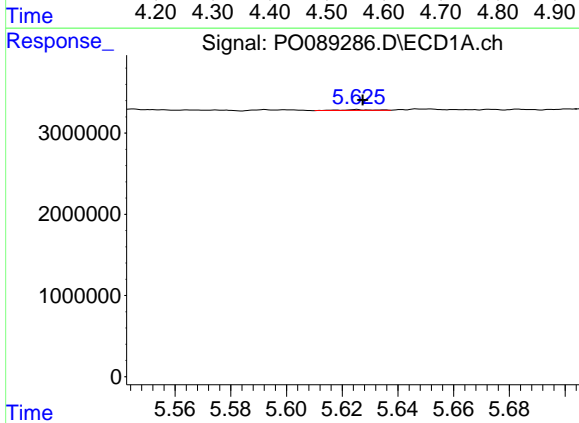
R.T.: 5.625 min
 Delta R.T.: 0.020 min
 Response: 83531
 Conc: 0.74 ng/ml

Instrument :
 ECD_O
 ClientSampleId :



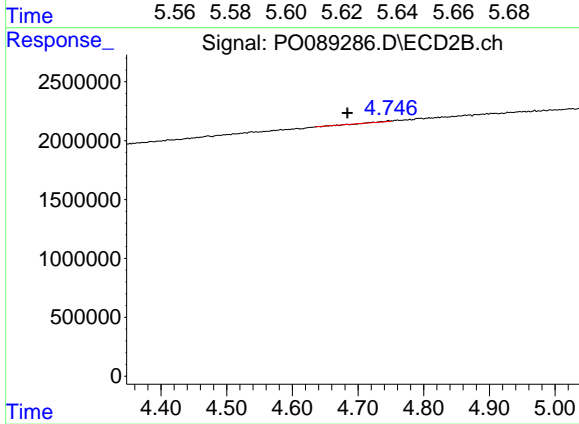
#3 AR-1016-1

R.T.: 4.608 min
 Delta R.T.: -0.057 min
 Response: 788188
 Conc: 21.83 ng/ml



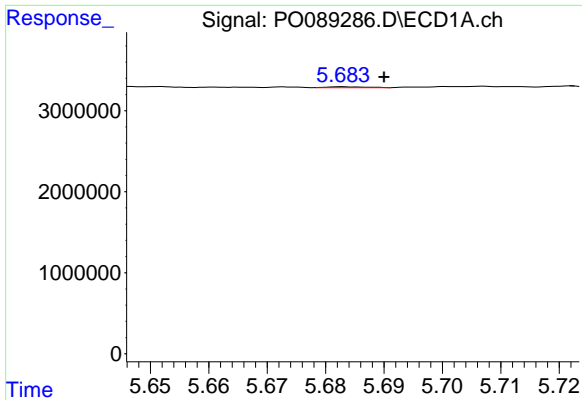
#4 AR-1016-2

R.T.: 5.625 min
 Delta R.T.: -0.002 min
 Response: 83531
 Conc: 0.53 ng/ml



#4 AR-1016-2

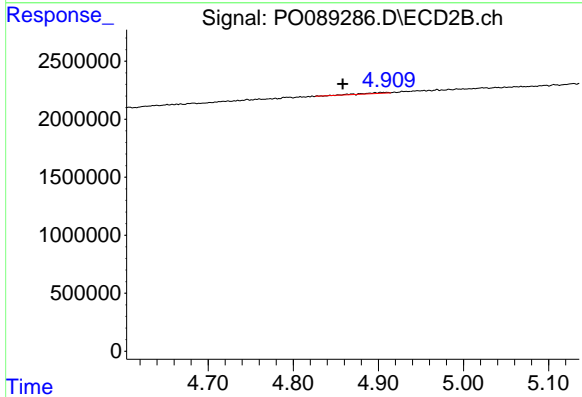
R.T.: 4.746 min
 Delta R.T.: 0.062 min
 Response: 9251
 Conc: 0.19 ng/ml



#5 AR-1016-3

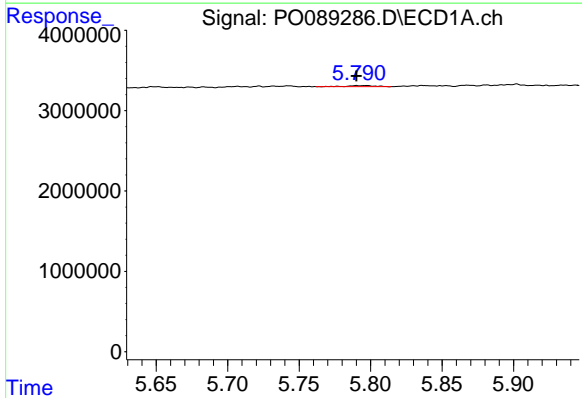
R.T.: 5.683 min
 Delta R.T.: -0.007 min
 Response: 56454
 Conc: 0.58 ng/ml

Instrument :
 ECD_O
 ClientSampleId :



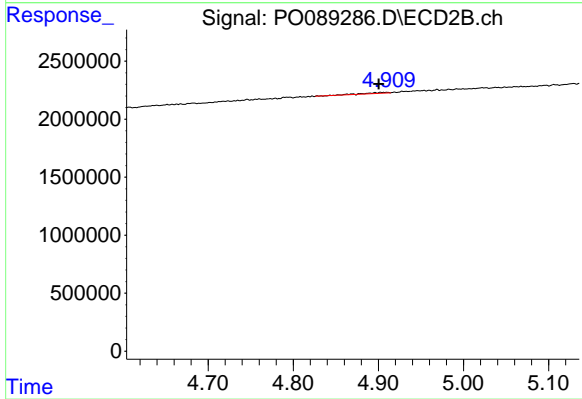
#5 AR-1016-3

R.T.: 4.910 min
 Delta R.T.: 0.051 min
 Response: 131423
 Conc: 4.94 ng/ml



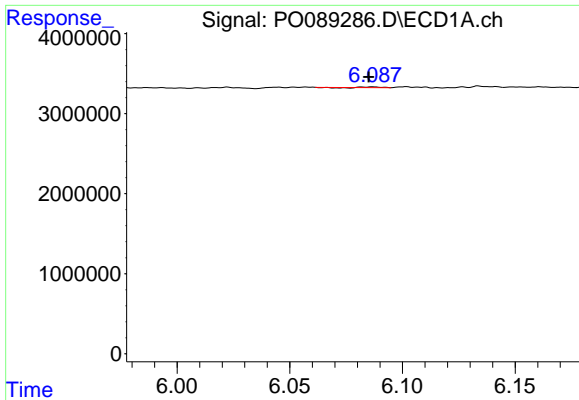
#6 AR-1016-4

R.T.: 5.797 min
 Delta R.T.: 0.007 min
 Response: 173239
 Conc: 2.20 ng/ml



#6 AR-1016-4

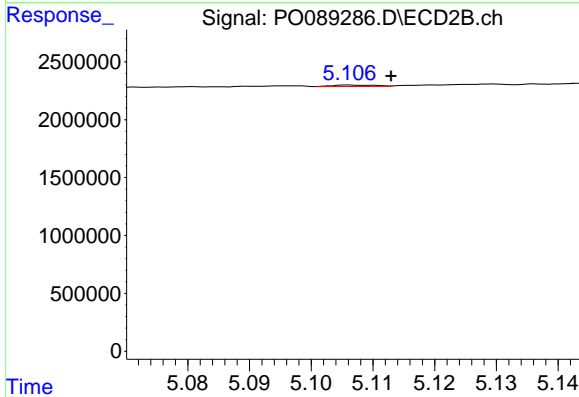
R.T.: 4.910 min
 Delta R.T.: 0.009 min
 Response: 131423
 Conc: 6.11 ng/ml



#7 AR-1016-5

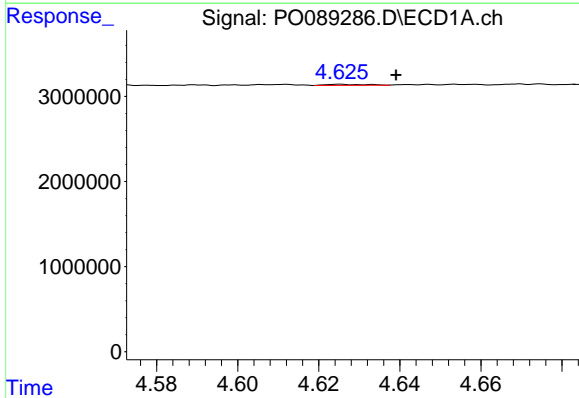
R.T.: 6.087 min
 Delta R.T.: 0.002 min
 Response: 28043
 Conc: 0.37 ng/ml

Instrument :
 ECD_O
 ClientSampleId :



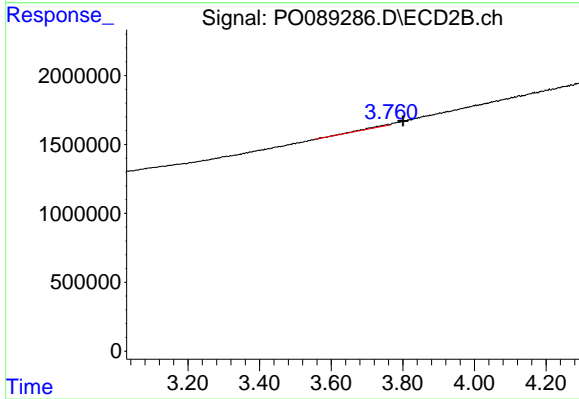
#7 AR-1016-5

R.T.: 5.107 min
 Delta R.T.: -0.006 min
 Response: 57560
 Conc: 1.97 ng/ml



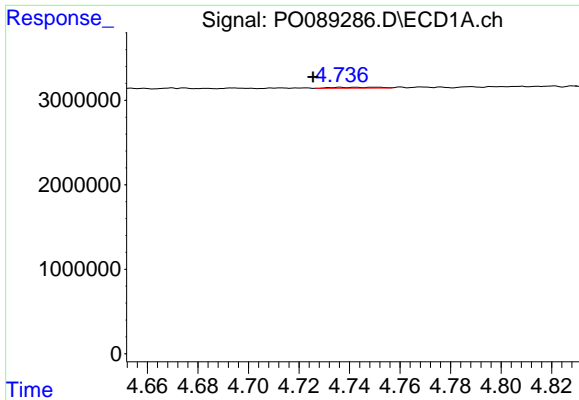
#8 AR-1221-1

R.T.: 4.625 min
 Delta R.T.: -0.014 min
 Response: 84094
 Conc: 1.98 ng/ml



#8 AR-1221-1

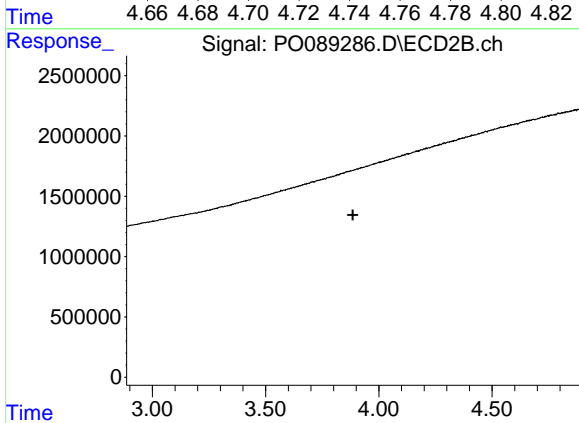
R.T.: 3.760 min
 Delta R.T.: -0.041 min
 Response: 364640
 Conc: 31.87 ng/ml



#9 AR-1221-2

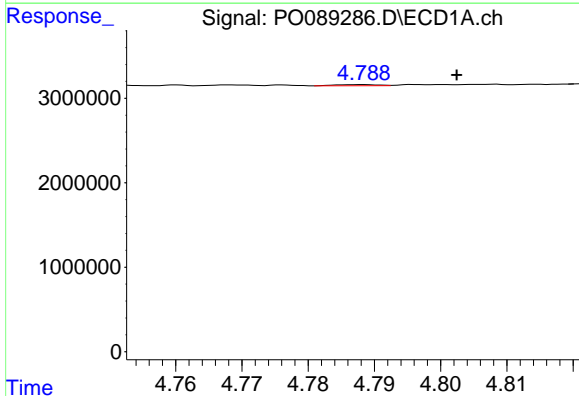
R.T.: 4.736 min
 Delta R.T.: 0.011 min
 Response: 148798
 Conc: 4.76 ng/ml

Instrument :
 ECD_O
 ClientSampleId :



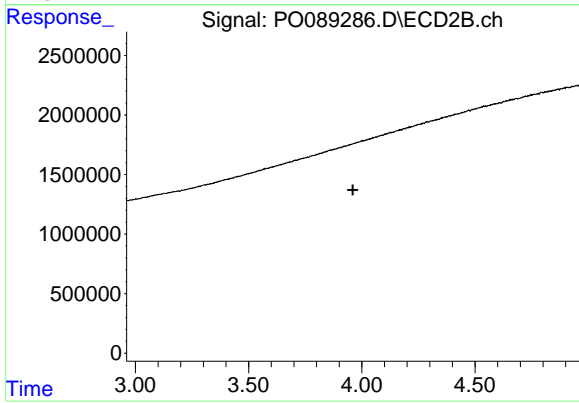
#9 AR-1221-2

R.T.: 0.000 min
 Exp R.T. : 3.886 min
 Response: 0
 Conc: N.D.



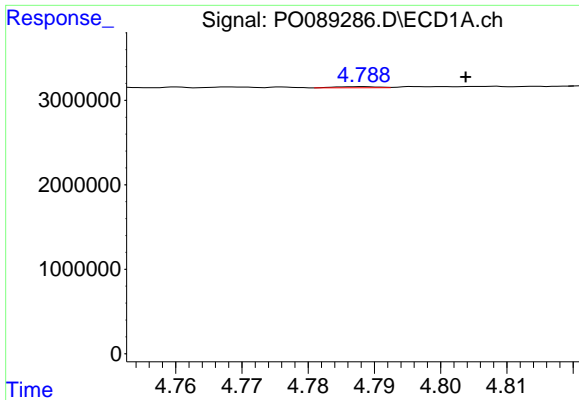
#10 AR-1221-3

R.T.: 4.788 min
 Delta R.T.: -0.015 min
 Response: 57067
 Conc: 0.61 ng/ml



#10 AR-1221-3

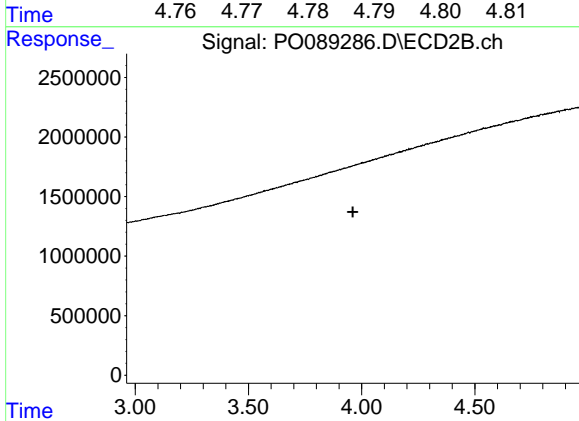
R.T.: 0.000 min
 Exp R.T. : 3.961 min
 Response: 0
 Conc: N.D.



#11 AR-1232-1

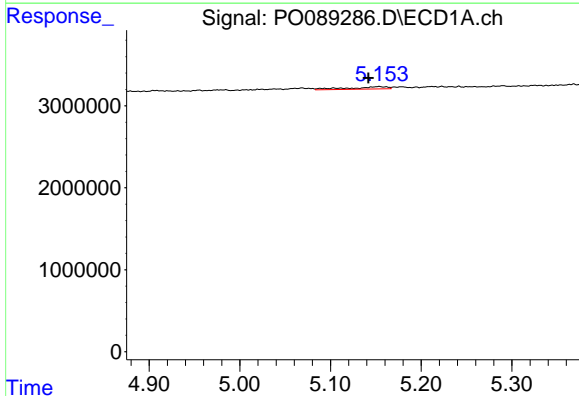
R.T.: 4.788 min
 Delta R.T.: -0.016 min
 Response: 57067
 Conc: 0.78 ng/ml

Instrument :
 ECD_O
 ClientSampleId :



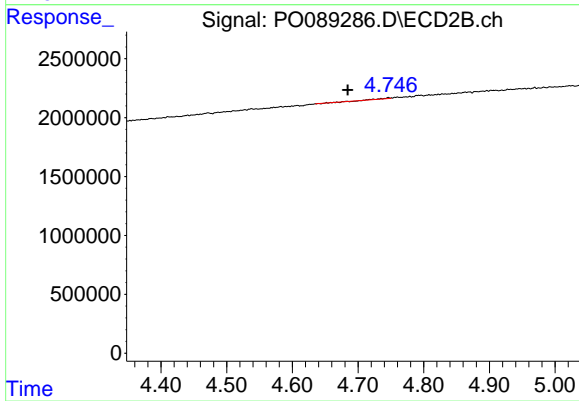
#11 AR-1232-1

R.T.: 0.000 min
 Exp R.T. : 3.961 min
 Response: 0
 Conc: N.D.



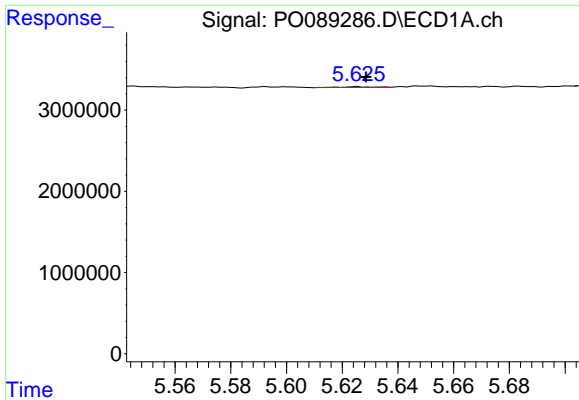
#12 AR-1232-2

R.T.: 5.154 min
 Delta R.T.: 0.012 min
 Response: 875029
 Conc: 23.33 ng/ml



#12 AR-1232-2

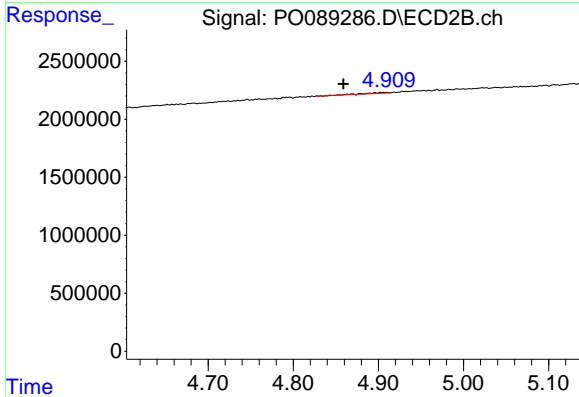
R.T.: 4.746 min
 Delta R.T.: 0.062 min
 Response: 9251
 Conc: 0.44 ng/ml



#13 AR-1232-3

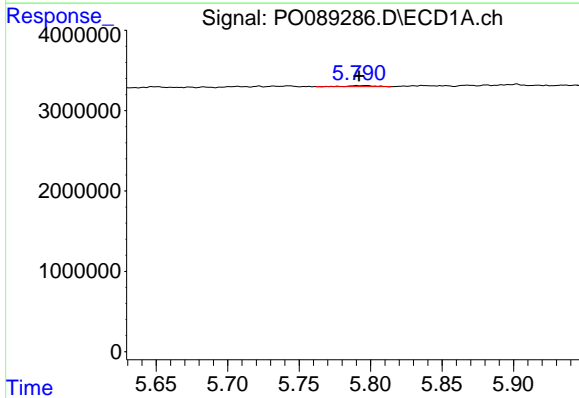
R.T.: 5.625 min
 Delta R.T.: -0.003 min
 Response: 83531
 Conc: 1.25 ng/ml

Instrument :
 ECD_O
 ClientSampleId :



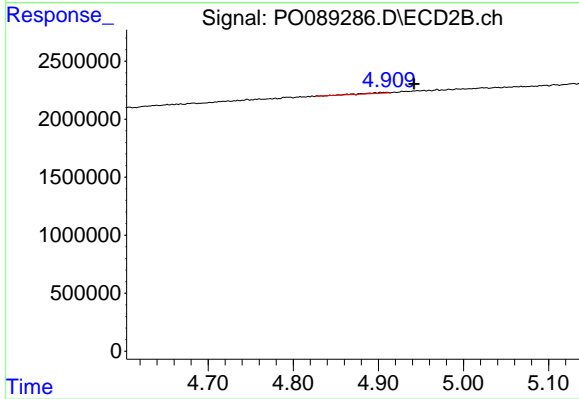
#13 AR-1232-3

R.T.: 4.910 min
 Delta R.T.: 0.051 min
 Response: 131423
 Conc: 11.79 ng/ml



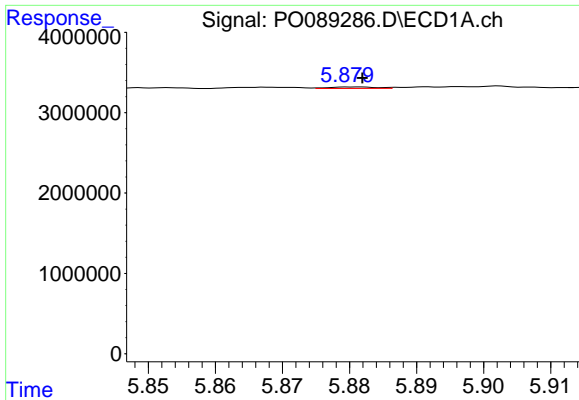
#14 AR-1232-4

R.T.: 5.797 min
 Delta R.T.: 0.005 min
 Response: 173239
 Conc: 5.27 ng/ml



#14 AR-1232-4

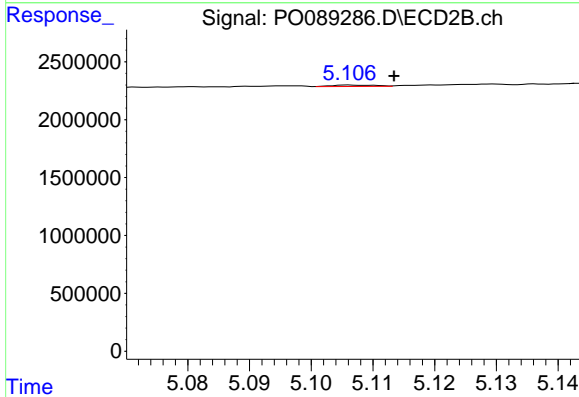
R.T.: 4.910 min
 Delta R.T.: -0.032 min
 Response: 131423
 Conc: 12.87 ng/ml



#15 AR-1232-5

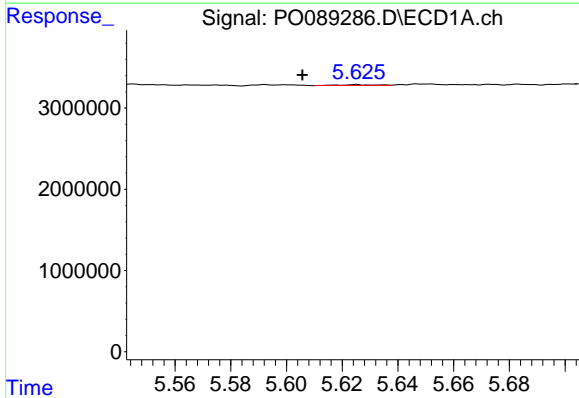
R.T.: 5.881 min
 Delta R.T.: -0.001 min
 Response: 91021
 Conc: 3.37 ng/ml

Instrument :
 ECD_O
 ClientSampleId :



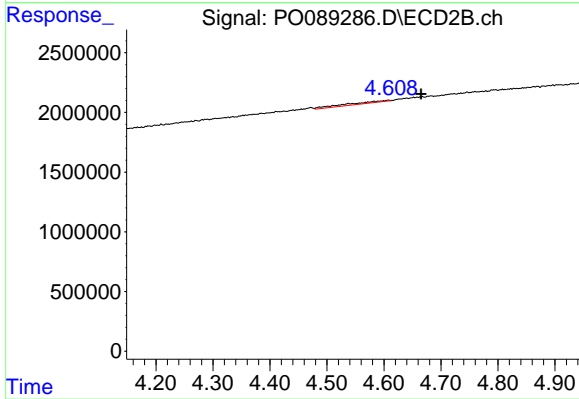
#15 AR-1232-5

R.T.: 5.107 min
 Delta R.T.: -0.007 min
 Response: 57560
 Conc: 4.93 ng/ml



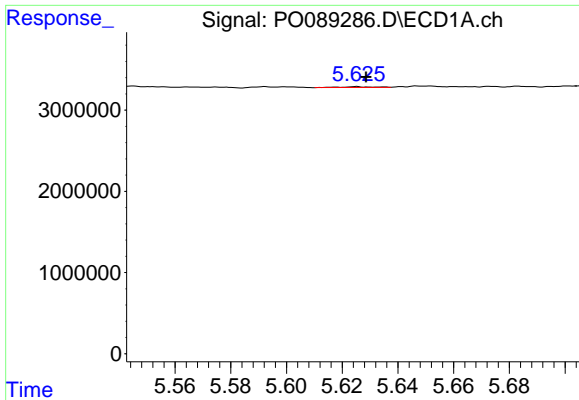
#16 AR-1242-1

R.T.: 5.625 min
 Delta R.T.: 0.019 min
 Response: 83531
 Conc: 0.95 ng/ml



#16 AR-1242-1

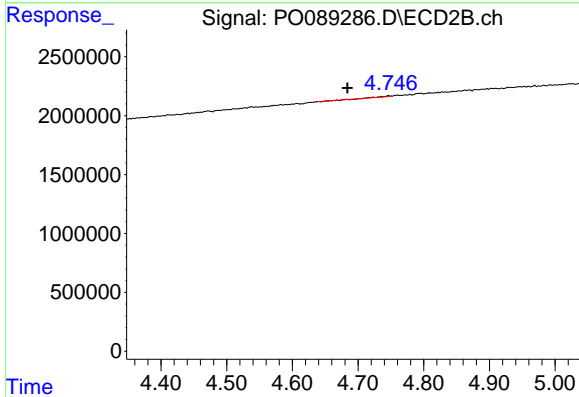
R.T.: 4.608 min
 Delta R.T.: -0.058 min
 Response: 788188
 Conc: 27.06 ng/ml



#17 AR-1242-2

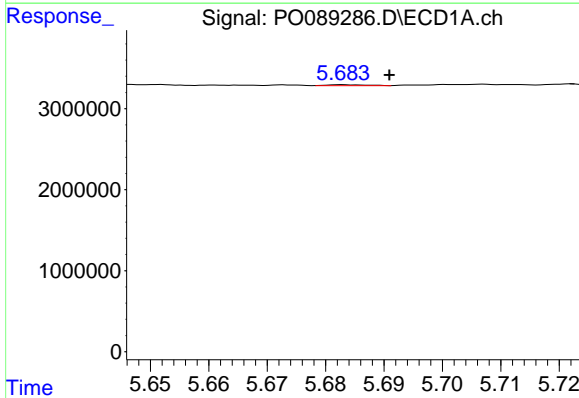
R.T.: 5.625 min
 Delta R.T.: -0.003 min
 Response: 83531
 Conc: 0.67 ng/ml

Instrument :
 ECD_O
 ClientSampleId :



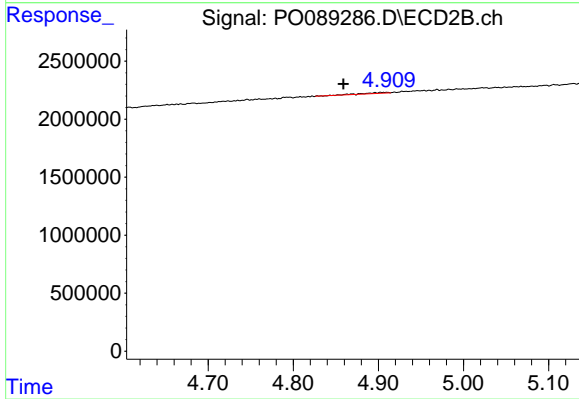
#17 AR-1242-2

R.T.: 4.746 min
 Delta R.T.: 0.062 min
 Response: 9251
 Conc: 0.23 ng/ml



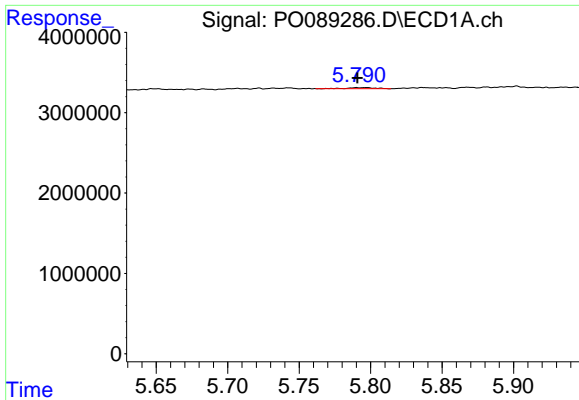
#18 AR-1242-3

R.T.: 5.683 min
 Delta R.T.: -0.008 min
 Response: 56454
 Conc: 0.73 ng/ml



#18 AR-1242-3

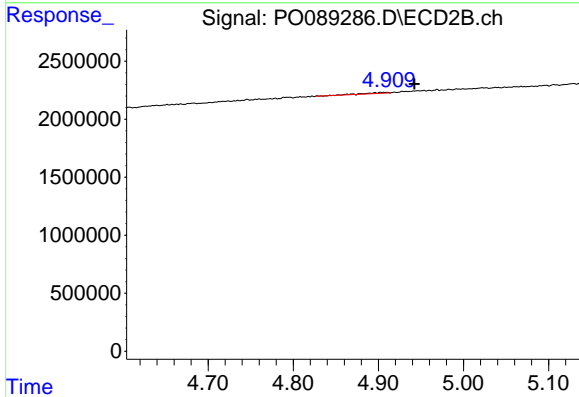
R.T.: 4.910 min
 Delta R.T.: 0.051 min
 Response: 131423
 Conc: 6.17 ng/ml



#19 AR-1242-4

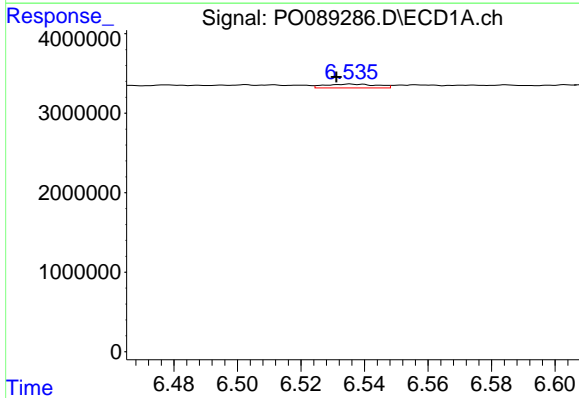
R.T.: 5.797 min
 Delta R.T.: 0.006 min
 Response: 173239
 Conc: 2.79 ng/ml

Instrument :
 ECD_O
 ClientSampleId :



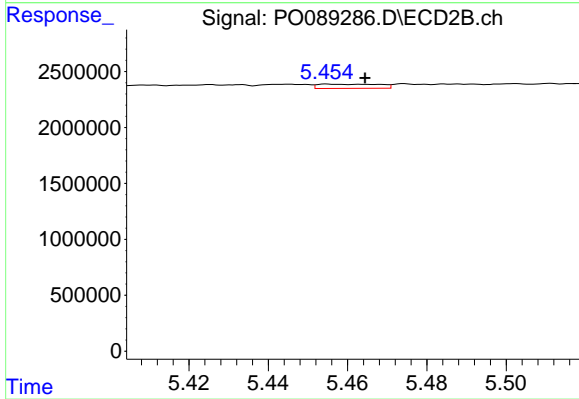
#19 AR-1242-4

R.T.: 4.910 min
 Delta R.T.: -0.032 min
 Response: 131423
 Conc: 6.04 ng/ml



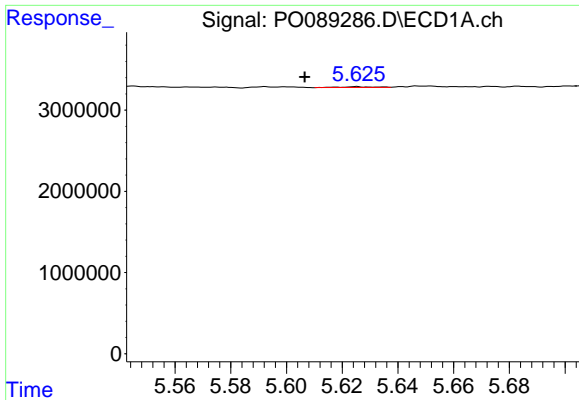
#20 AR-1242-5

R.T.: 6.535 min
 Delta R.T.: 0.004 min
 Response: 560411
 Conc: 8.71 ng/ml



#20 AR-1242-5

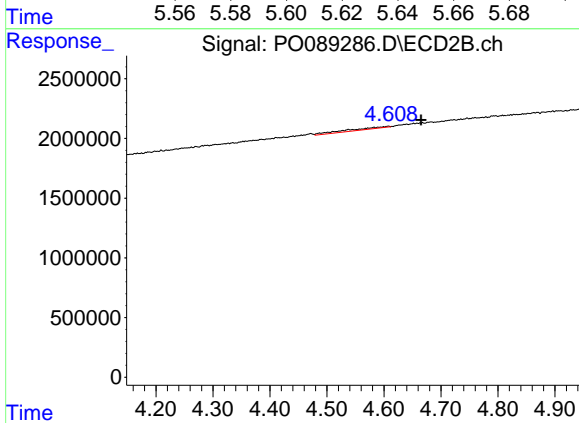
R.T.: 5.455 min
 Delta R.T.: -0.009 min
 Response: 411084
 Conc: 15.05 ng/ml



#21 AR-1248-1

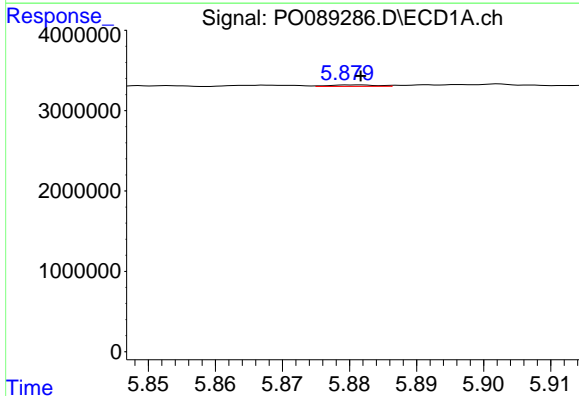
R.T.: 5.625 min
 Delta R.T.: 0.018 min
 Response: 83531
 Conc: 1.21 ng/ml

Instrument :
 ECD_O
 ClientSampleId :



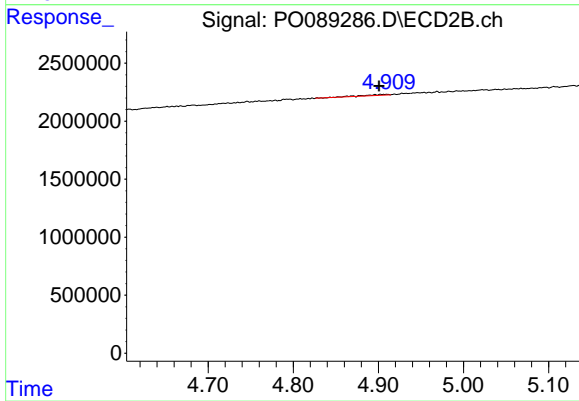
#21 AR-1248-1

R.T.: 4.608 min
 Delta R.T.: -0.058 min
 Response: 788188
 Conc: 35.09 ng/ml



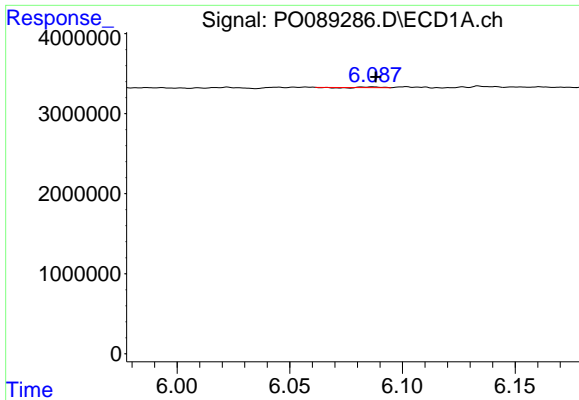
#22 AR-1248-2

R.T.: 5.881 min
 Delta R.T.: 0.000 min
 Response: 91021
 Conc: 0.92 ng/ml



#22 AR-1248-2

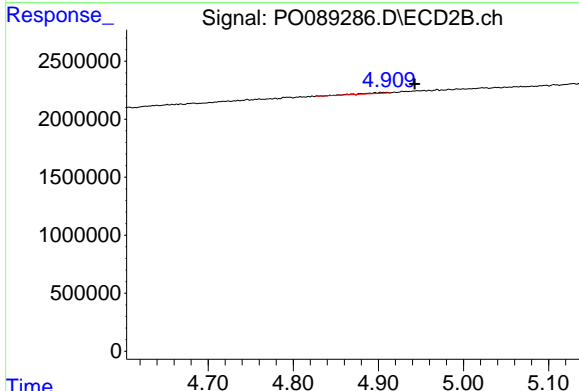
R.T.: 4.910 min
 Delta R.T.: 0.009 min
 Response: 131423
 Conc: 4.02 ng/ml



#23 AR-1248-3

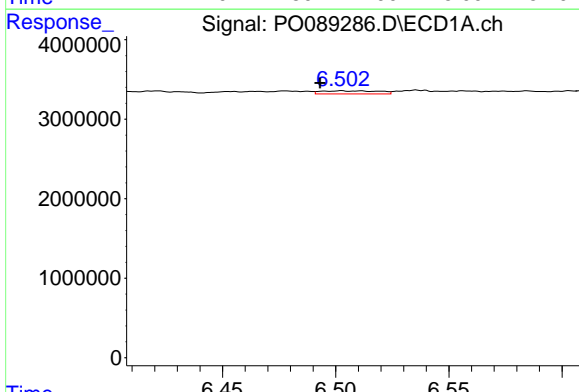
R.T.: 6.087 min
 Delta R.T.: -0.001 min
 Response: 28043
 Conc: 0.27 ng/ml

Instrument :
 ECD_O
 ClientSampleId :



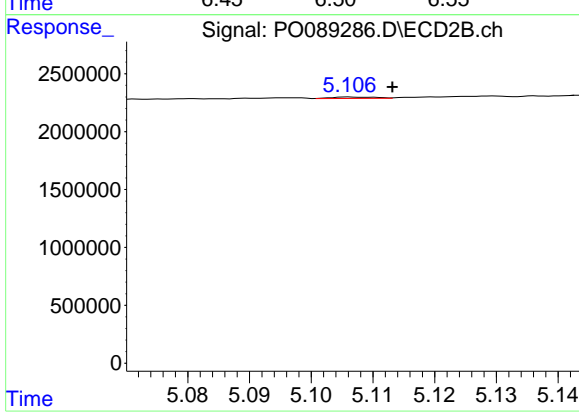
#23 AR-1248-3

R.T.: 4.910 min
 Delta R.T.: -0.033 min
 Response: 131423
 Conc: 3.86 ng/ml



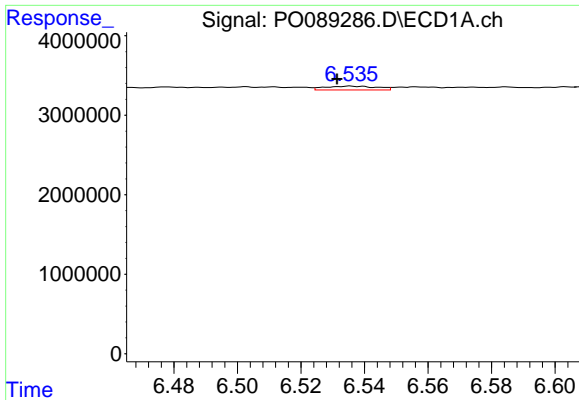
#24 AR-1248-4

R.T.: 6.503 min
 Delta R.T.: 0.009 min
 Response: 705793
 Conc: 6.13 ng/ml



#24 AR-1248-4

R.T.: 5.107 min
 Delta R.T.: -0.007 min
 Response: 57560
 Conc: 1.41 ng/ml

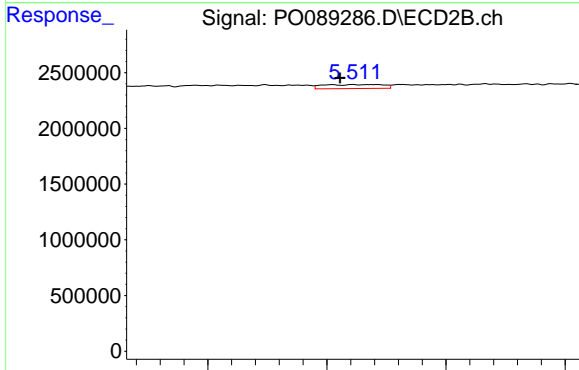


#25 AR-1248-5

R.T.: 6.535 min
 Delta R.T.: 0.004 min
 Response: 560411
 Conc: 4.95 ng/ml

Instrument :
 ECD_O
 ClientSampleId :

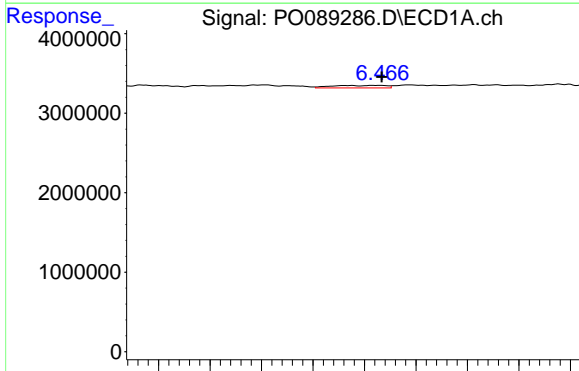
Time 6.48 6.50 6.52 6.54 6.56 6.58 6.60



#25 AR-1248-5

R.T.: 5.511 min
 Delta R.T.: 0.006 min
 Response: 614905
 Conc: 15.47 ng/ml

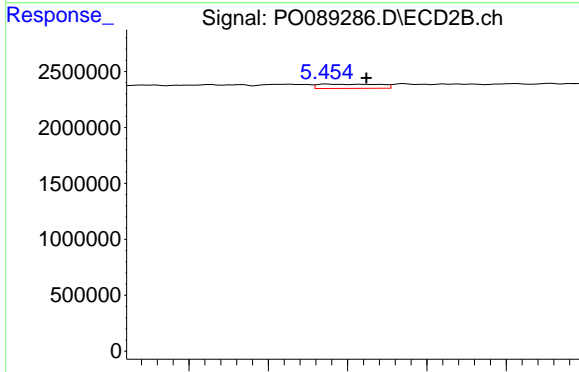
Time 5.45 5.50 5.55



#26 AR-1254-1

R.T.: 6.465 min
 Delta R.T.: -0.002 min
 Response: 462112
 Conc: 4.02 ng/ml

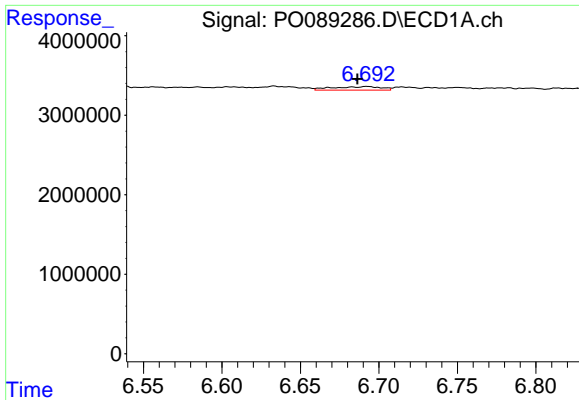
Time 6.38 6.40 6.42 6.44 6.46 6.48 6.50 6.52



#26 AR-1254-1

R.T.: 5.455 min
 Delta R.T.: -0.010 min
 Response: 411084
 Conc: 6.95 ng/ml

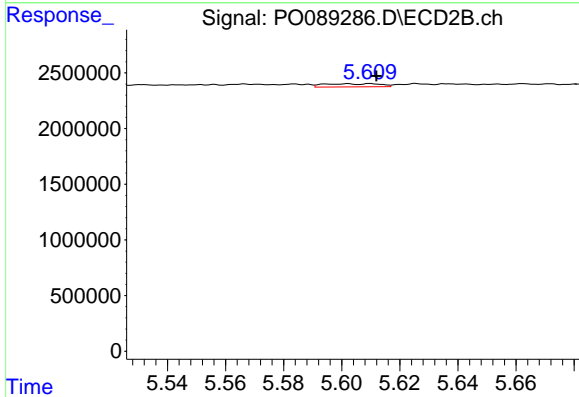
Time 5.42 5.44 5.46 5.48 5.50



#27 AR-1254-2

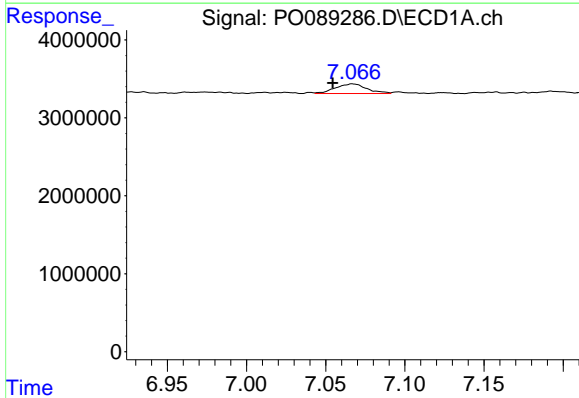
R.T.: 6.692 min
 Delta R.T.: 0.006 min
 Response: 964366
 Conc: 5.67 ng/ml

Instrument :
 ECD_O
 ClientSampleId :



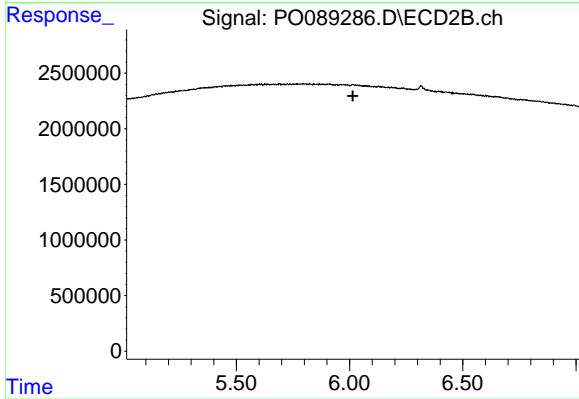
#27 AR-1254-2

R.T.: 5.610 min
 Delta R.T.: -0.002 min
 Response: 378101
 Conc: 7.41 ng/ml



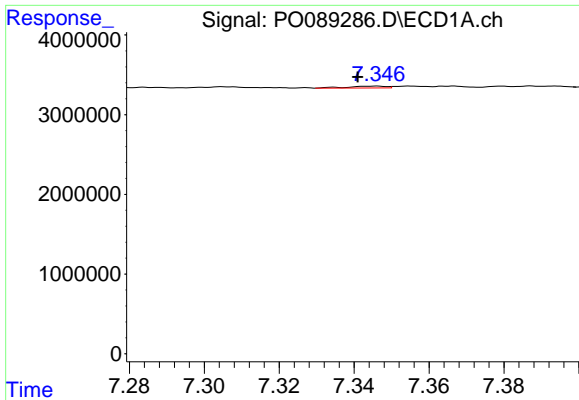
#28 AR-1254-3

R.T.: 7.067 min
 Delta R.T.: 0.013 min
 Response: 1705309
 Conc: 9.82 ng/ml



#28 AR-1254-3

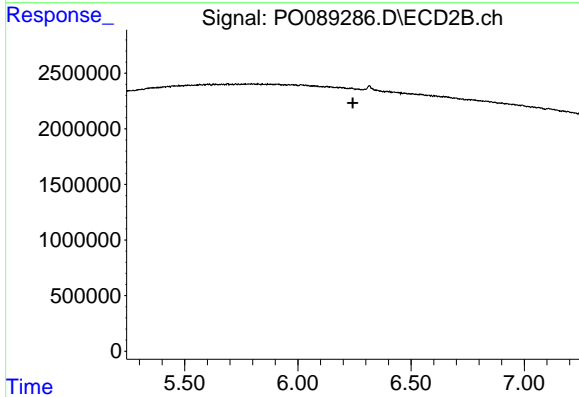
R.T.: 0.000 min
 Exp R.T. : 6.014 min
 Response: 0
 Conc: N.D.



#29 AR-1254-4

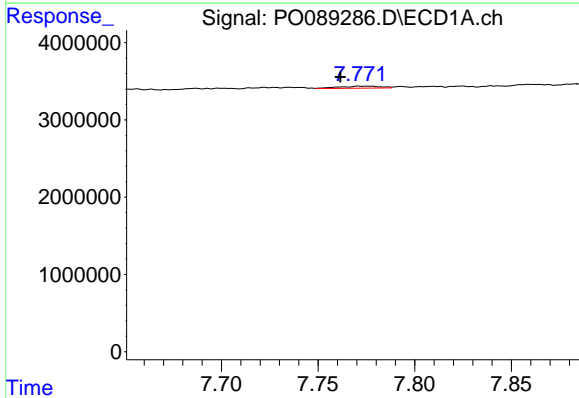
R.T.: 7.345 min
 Delta R.T.: 0.004 min
 Response: 170640
 Conc: 1.37 ng/ml

Instrument :
 ECD_O
 ClientSampleId :



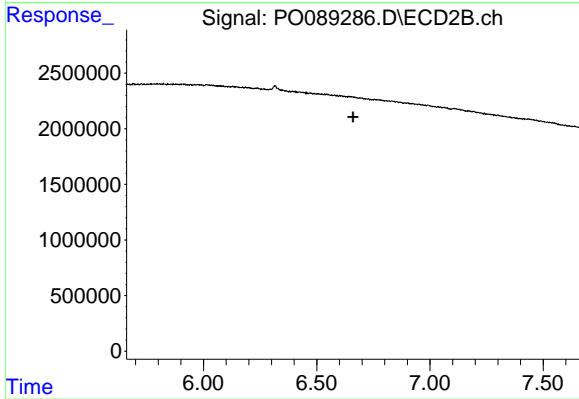
#29 AR-1254-4

R.T.: 0.000 min
 Exp R.T. : 6.243 min
 Response: 0
 Conc: N.D.



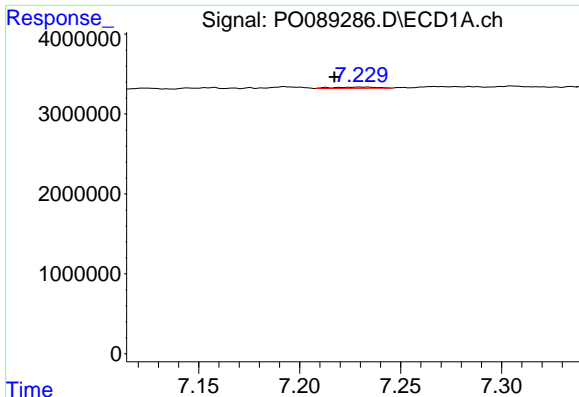
#30 AR-1254-5

R.T.: 7.772 min
 Delta R.T.: 0.010 min
 Response: 390961
 Conc: 3.04 ng/ml



#30 AR-1254-5

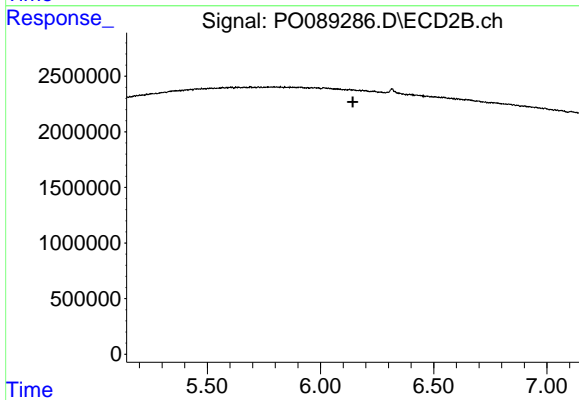
R.T.: 0.000 min
 Exp R.T. : 6.660 min
 Response: 0
 Conc: N.D.



#31 AR-1260-1

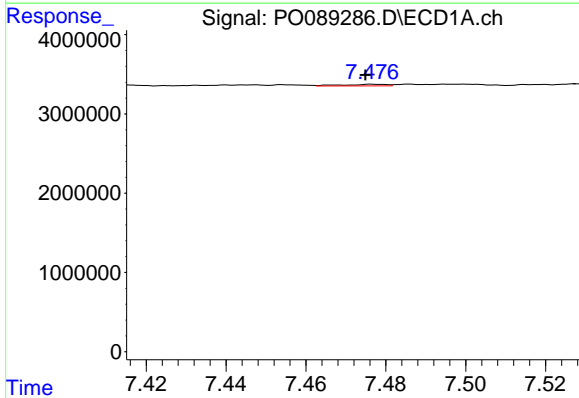
R.T.: 7.230 min
 Delta R.T.: 0.013 min
 Response: 221183
 Conc: 1.64 ng/ml

Instrument :
 ECD_O
 ClientSampleId :



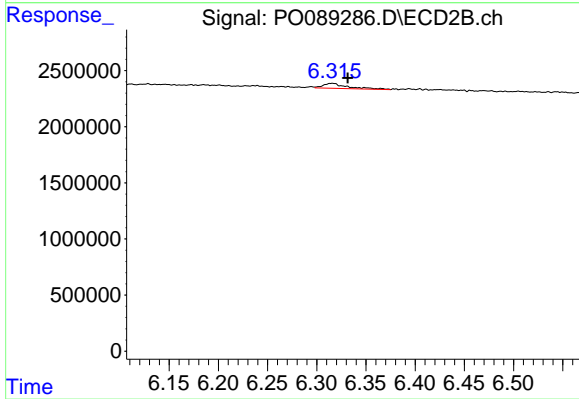
#31 AR-1260-1

R.T.: 0.000 min
 Exp R.T. : 6.143 min
 Response: 0
 Conc: N.D.



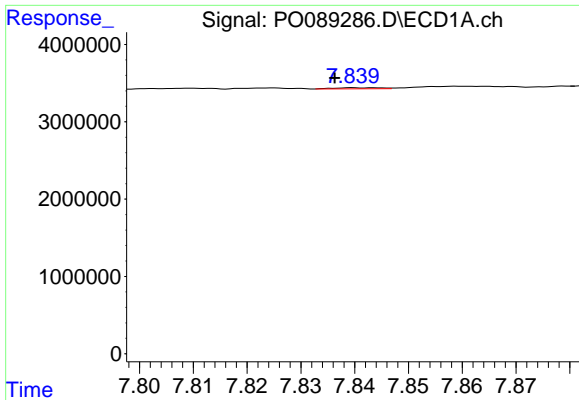
#32 AR-1260-2

R.T.: 7.477 min
 Delta R.T.: 0.002 min
 Response: 158374
 Conc: 1.04 ng/ml



#32 AR-1260-2

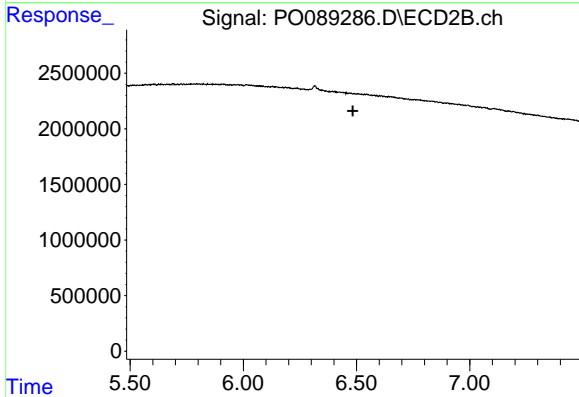
R.T.: 6.316 min
 Delta R.T.: -0.016 min
 Response: 767324
 Conc: 11.29 ng/ml



#33 AR-1260-3

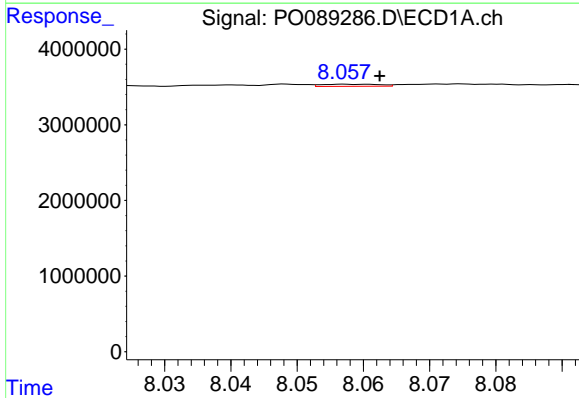
R.T.: 7.840 min
 Delta R.T.: 0.004 min
 Response: 78927
 Conc: 0.71 ng/ml

Instrument :
 ECD_O
 ClientSampleId :



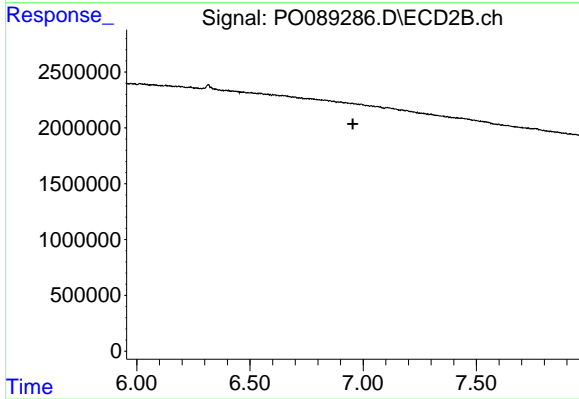
#33 AR-1260-3

R.T.: 0.000 min
 Exp R.T. : 6.484 min
 Response: 0
 Conc: N.D.



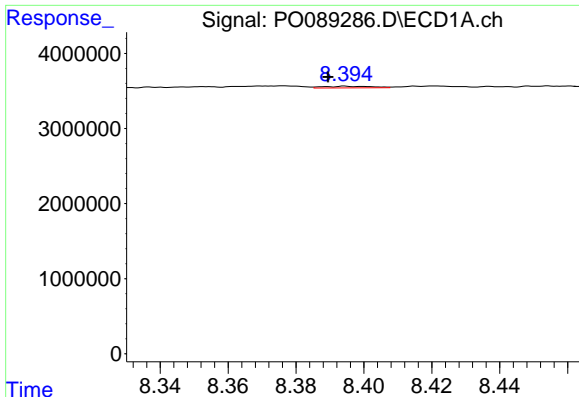
#34 AR-1260-4

R.T.: 8.058 min
 Delta R.T.: -0.005 min
 Response: 172144
 Conc: 1.39 ng/ml



#34 AR-1260-4

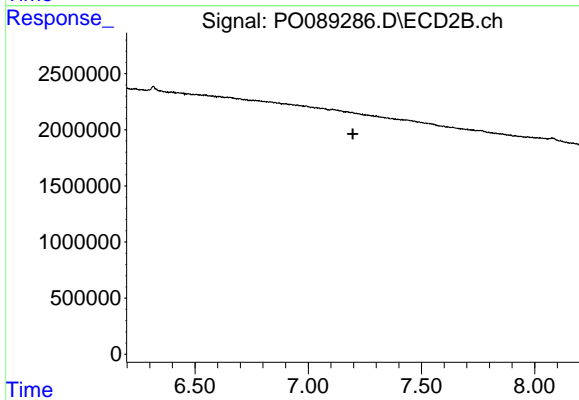
R.T.: 0.000 min
 Exp R.T. : 6.955 min
 Response: 0
 Conc: N.D.



#35 AR-1260-5

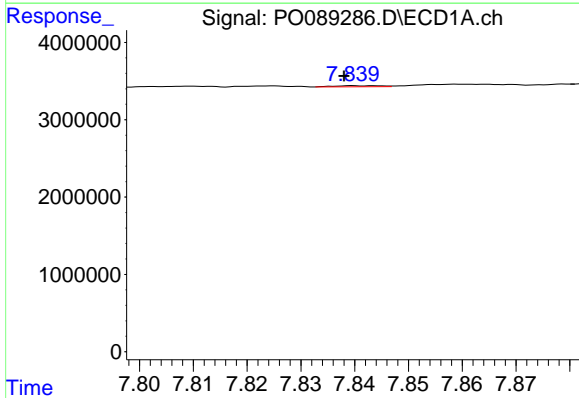
R.T.: 8.395 min
 Delta R.T.: 0.005 min
 Response: 222935
 Conc: 0.93 ng/ml

Instrument :
 ECD_O
 ClientSampleId :



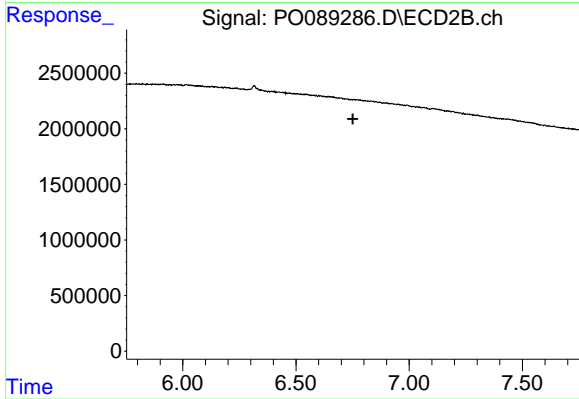
#35 AR-1260-5

R.T.: 0.000 min
 Exp R.T. : 7.197 min
 Response: 0
 Conc: N.D.



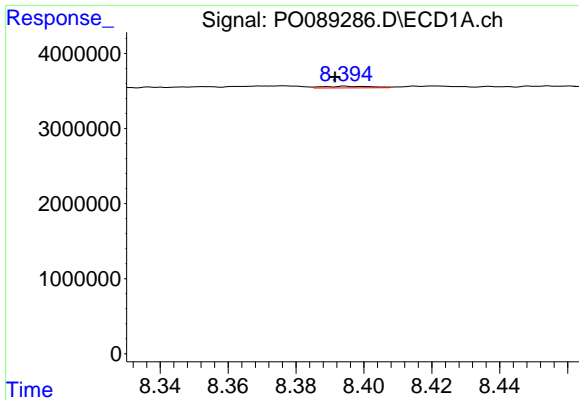
#36 AR-1262-1

R.T.: 7.840 min
 Delta R.T.: 0.002 min
 Response: 78927
 Conc: 0.52 ng/ml



#36 AR-1262-1

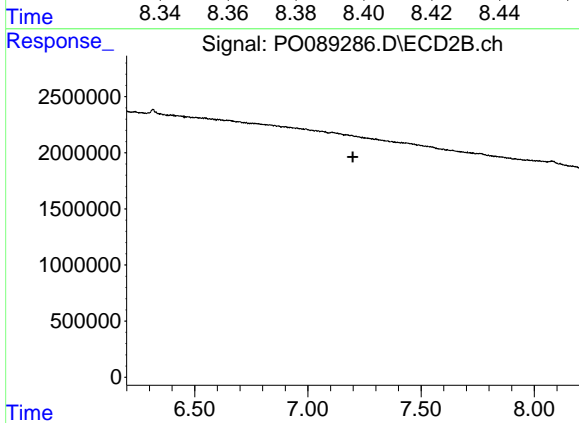
R.T.: 0.000 min
 Exp R.T. : 6.751 min
 Response: 0
 Conc: N.D.



#37 AR-1262-2

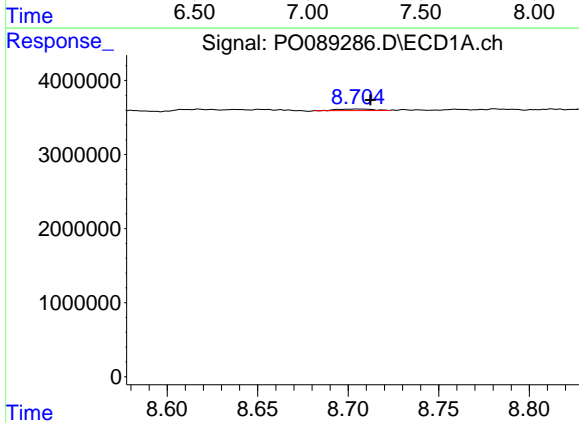
R.T.: 8.395 min
 Delta R.T.: 0.003 min
 Response: 222935
 Conc: 0.88 ng/ml

Instrument :
 ECD_O
 ClientSampleId :



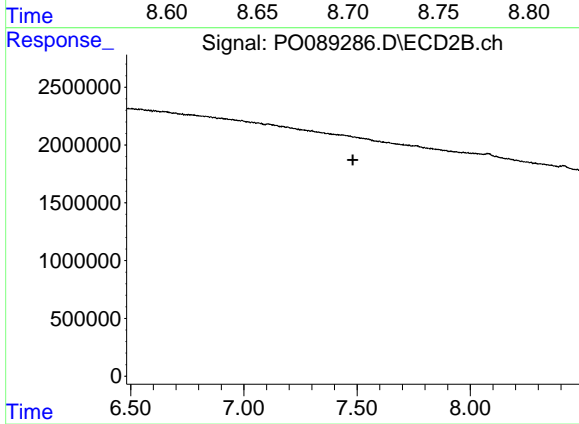
#37 AR-1262-2

R.T.: 0.000 min
 Exp R.T. : 7.199 min
 Response: 0
 Conc: N.D.



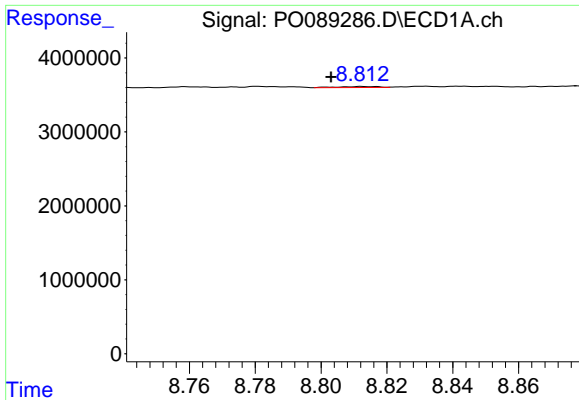
#38 AR-1262-3

R.T.: 8.705 min
 Delta R.T.: -0.007 min
 Response: 298583
 Conc: 1.75 ng/ml



#38 AR-1262-3

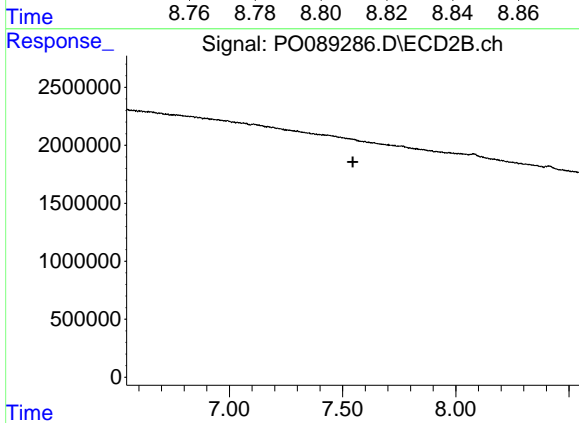
R.T.: 0.000 min
 Exp R.T. : 7.481 min
 Response: 0
 Conc: N.D.



#39 AR-1262-4

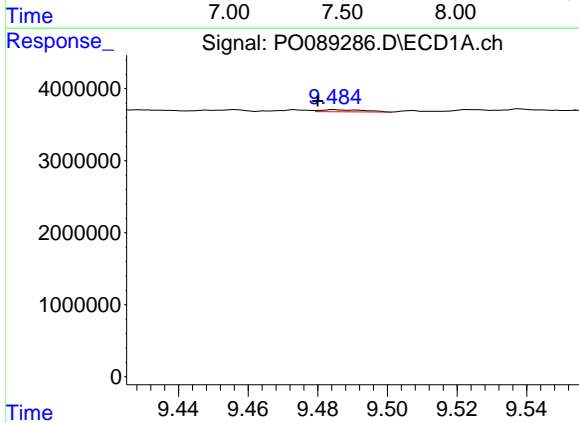
R.T.: 8.813 min
 Delta R.T.: 0.010 min
 Response: 121375
 Conc: 1.74 ng/ml

Instrument :
 ECD_O
 ClientSampleId :



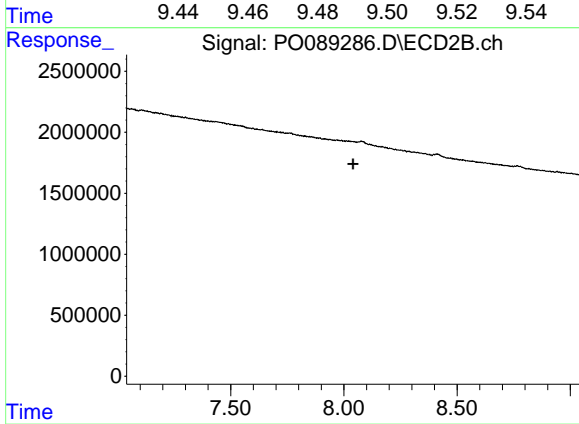
#39 AR-1262-4

R.T.: 0.000 min
 Exp R.T. : 7.546 min
 Response: 0
 Conc: N.D.



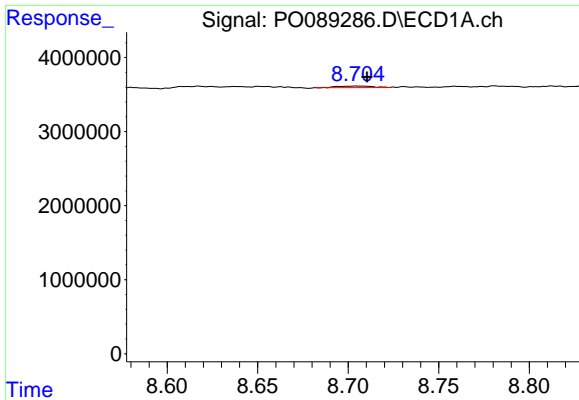
#40 AR-1262-5

R.T.: 9.485 min
 Delta R.T.: 0.005 min
 Response: 247795
 Conc: 2.61 ng/ml



#40 AR-1262-5

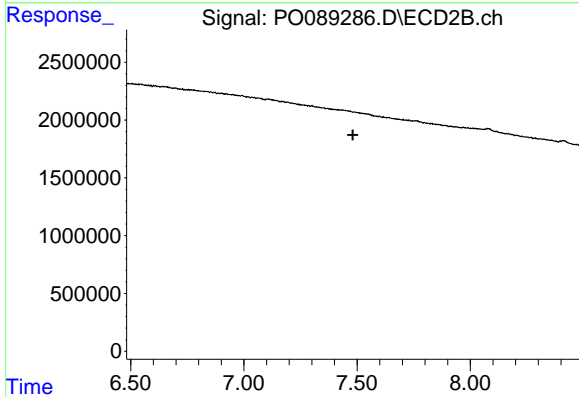
R.T.: 0.000 min
 Exp R.T. : 8.040 min
 Response: 0
 Conc: N.D.



#41 AR-1268-1

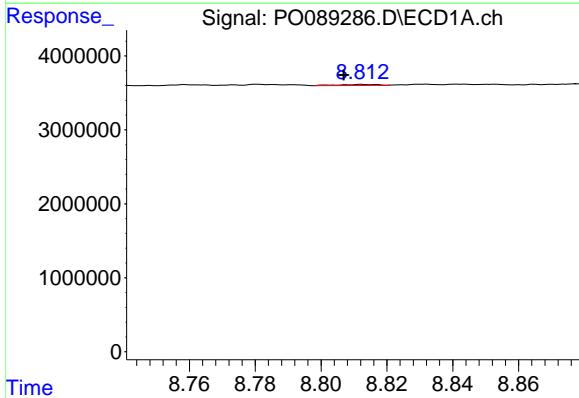
R.T.: 8.705 min
 Delta R.T.: -0.006 min
 Response: 298583
 Conc: 1.03 ng/ml

Instrument :
 ECD_O
 ClientSampleId :



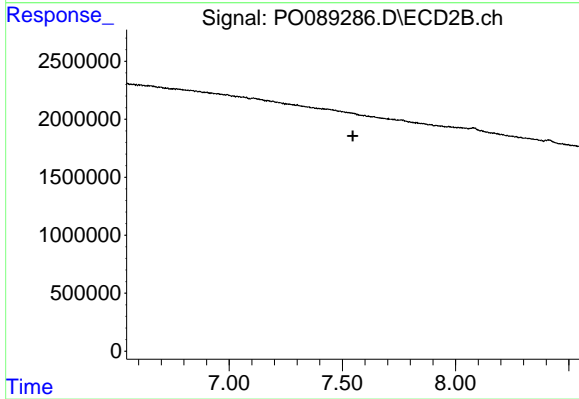
#41 AR-1268-1

R.T.: 0.000 min
 Exp R.T. : 7.482 min
 Response: 0
 Conc: N.D.



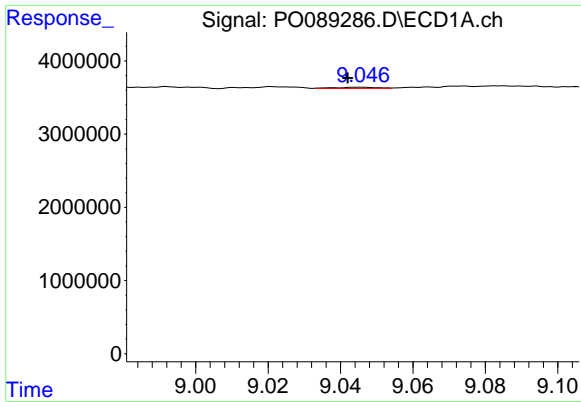
#42 AR-1268-2

R.T.: 8.813 min
 Delta R.T.: 0.006 min
 Response: 121375
 Conc: 0.45 ng/ml



#42 AR-1268-2

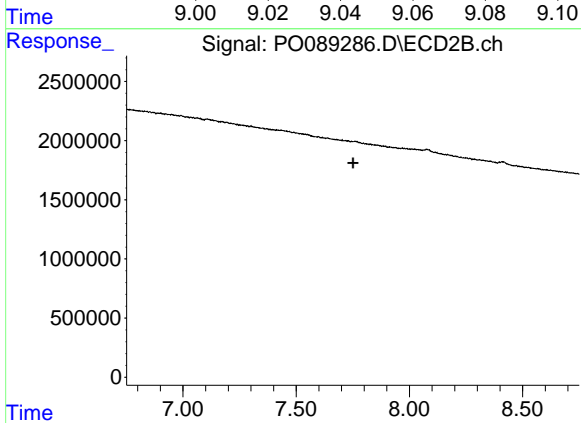
R.T.: 0.000 min
 Exp R.T. : 7.546 min
 Response: 0
 Conc: N.D.



#43 AR-1268-3

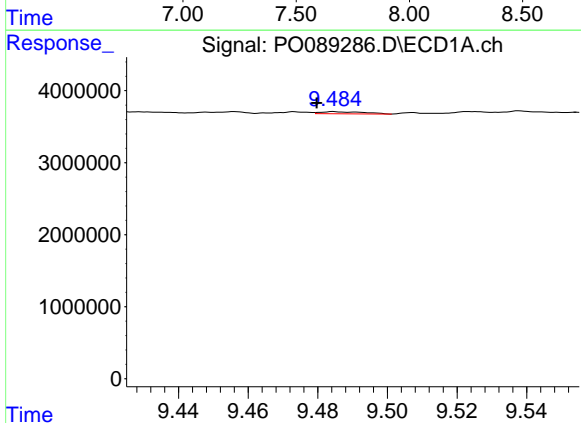
R.T.: 9.045 min
 Delta R.T.: 0.003 min
 Response: 123439
 Conc: 0.53 ng/ml

Instrument :
 ECD_O
 ClientSampleId :



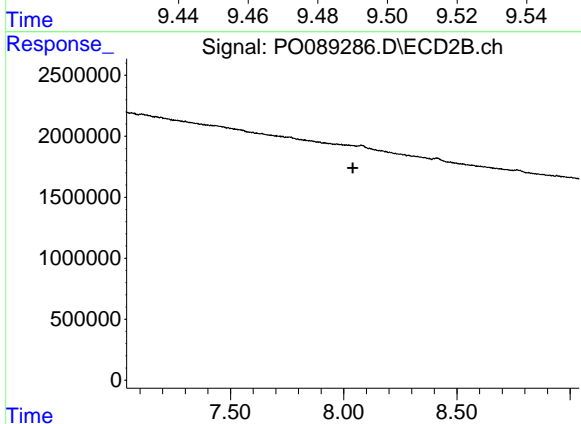
#43 AR-1268-3

R.T.: 0.000 min
 Exp R.T. : 7.751 min
 Response: 0
 Conc: N.D.



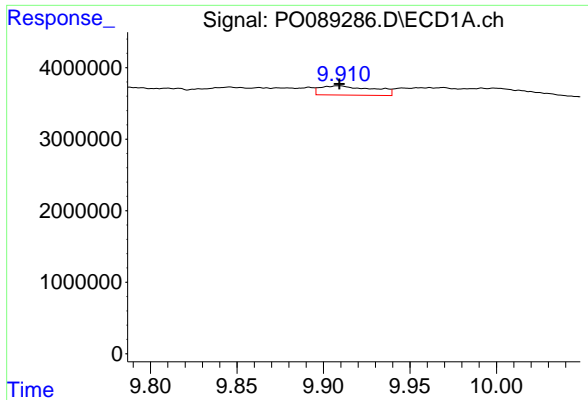
#44 AR-1268-4

R.T.: 9.485 min
 Delta R.T.: 0.005 min
 Response: 247795
 Conc: 2.51 ng/ml



#44 AR-1268-4

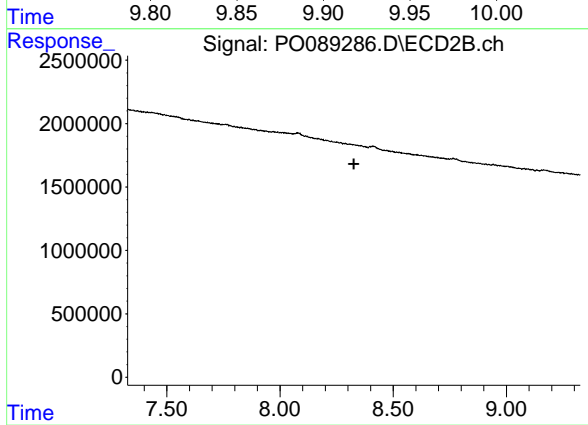
R.T.: 0.000 min
 Exp R.T. : 8.041 min
 Response: 0
 Conc: N.D.



#45 AR-1268-5

R.T.: 9.909 min
 Delta R.T.: 0.000 min
 Response: 2731620
 Conc: 3.75 ng/ml

Instrument :
 ECD_O
 ClientSampleId :



#45 AR-1268-5

R.T.: 0.000 min
 Exp R.T. : 8.326 min
 Response: 0
 Conc: N.D.