

Data Path : Z:\pestpcbsrv\HPCHEM1\ECD\_0\Data\P0090622\  
 Data File : P0089352.D  
 Signal(s) : Signal #1: ECD1A.ch Signal #2: ECD2B.ch  
 Acq On : 07 Sep 2022 08:33  
 Operator : YP/AJ  
 Sample : N4505-02 10X  
 Misc :  
 ALS Vial : 48 Sample Multiplier: 1

Instrument :  
 ECD\_0  
 ClientSampleId :

Integration File signal 1: autoint1.e  
 Integration File signal 2: autoint2.e  
 Quant Time: Sep 07 10:45:03 2022  
 Quant Method : Z:\pestpcbsrv\HPCHEM1\ECD\_0\methods\P0082922.M  
 Quant Title : GC EXTRACTABLES  
 QLast Update : Mon Aug 29 17:48:02 2022  
 Response via : Initial Calibration  
 Integrator: ChemStation

Volume Inj. : 2 µl  
 Signal #1 Phase : ZB-MR1 Signal #2 Phase: ZB-MR2  
 Signal #1 Info : 30Mx0.32mmx 0.50µ Signal #2 Info : 30M x 0.32mm x 0.25µm

Compound	RT#1	RT#2	Resp#1	Resp#2	ng/ml	ng/ml
System Monitoring Compounds						
1) SA Tetrachlo...	4.429	3.584	4554343	525164	1.215	0.544 #
2) SA Decachlor...	10.238	8.566	6500042	1721464	2.823	1.947 #
Target Compounds						
3) L1 AR-1016-1	5.618	4.673	2320914	3881725	20.642	107.488 #
4) L1 AR-1016-2	5.618	4.673	2320914	3881725	14.727	78.626 #
5) L1 AR-1016-3	5.710	4.851	8144523	1060701	83.510	39.880 #
6) L1 AR-1016-4	5.789	4.902	1028807	4289963	13.075	199.317 #
7) L1 AR-1016-5	6.075	5.150f	4329369	2554369	56.413	87.545 #
8) L2 AR-1221-1	4.632	3.797	15735556	6335783	370.072	553.703 #
9) L2 AR-1221-2	4.725	3.866	10549806	10360622	337.619	1184.495 #
10) L2 AR-1221-3	4.817	3.966	17106346	3700508	184.263	132.944 #
11) L3 AR-1232-1	4.817	3.966	17106346	3700508	232.559	161.114 #
12) L3 AR-1232-2	5.134	4.673	14322129	3881725	381.921	183.515 #
13) L3 AR-1232-3	5.618	4.851	2320914	1060701	34.768	95.156 #
14) L3 AR-1232-4	5.789	4.958	1028807	1096823	31.291	107.433 #
15) L3 AR-1232-5	5.879	5.150f	2803420	2554369	103.735	218.858 #
16) L4 AR-1242-1	5.618	4.673	2320914	3881725	26.257	133.253 #
17) L4 AR-1242-2	5.618	4.673	2320914	3881725	18.752	97.987 #
18) L4 AR-1242-3	5.710	4.851	8144523	1060701	105.959	49.781 #
19) L4 AR-1242-4	5.789	4.958	1028807	1096823	16.565	50.408 #
20) L4 AR-1242-5	6.542	5.460	2030842	1372873	31.548	50.257 #
21) L5 AR-1248-1	5.618	4.673	2320914	3881725	33.703	172.833 #
22) L5 AR-1248-2	5.879	4.902	2803420	4289963	28.405	131.155 #
23) L5 AR-1248-3	6.099	4.958	1611501	1096823	15.382	32.174 #
24) L5 AR-1248-4	6.477	5.150f	6529425	2554369	56.751	62.668
25) L5 AR-1248-5	6.542	5.502	2030842	5487859	17.943	138.099 #
26) L6 AR-1254-1	6.477	5.460	6529425	1372873	56.769	23.205 #
27) L6 AR-1254-2	6.689	5.609	18145380	1958161	106.634	38.387 #
28) L6 AR-1254-3	7.066	6.039	6168290	11615466	35.516	147.080 #
29) L6 AR-1254-4	7.356	6.225	1315388	1654766	10.538	33.383 #
30) L6 AR-1254-5	7.757	6.654	9169995	4289175	71.194	63.439
31) L7 AR-1260-1	7.215	6.140	6594637	3753841	48.974	66.909 #
32) L7 AR-1260-2	7.488	6.328	13014288	4060289	85.276	59.752 #
33) L7 AR-1260-3	7.831	6.478	5850454	1004924	52.357	16.379 #
34) L7 AR-1260-4	8.074	6.949	35335188	3249891	286.233	64.492 #
35) L7 AR-1260-5	8.387	7.194	10864268	4737462	45.541	41.406
36) L8 AR-1262-1	7.831	6.746	5850454	1347222	38.770	47.583
37) L8 AR-1262-2	8.387	7.194	10864268	4737462	42.674	39.285
38) L8 AR-1262-3	8.722	7.475	1310976	532215	7.668	11.051 #
39) L8 AR-1262-4	8.793	7.551	15553266	11851949	222.609	132.595 #
40) L8 AR-1262-5	9.463	8.034	1083087	12136732	11.419	295.948 #
41) L9 AR-1268-1	8.722	7.475	1310976	532215	4.533	3.721

Data Path : Z:\pestpcbsrv\HPCHEM1\ECD\_0\Data\P0090622\  
 Data File : P0089352.D  
 Signal(s) : Signal #1: ECD1A.ch Signal #2: ECD2B.ch  
 Acq On : 07 Sep 2022 08:33  
 Operator : YP/AJ  
 Sample : N4505-02 10X  
 Misc :  
 ALS Vial : 48 Sample Multiplier: 1

Instrument :  
 ECD\_0  
 ClientSampleId :

Integration File signal 1: autoint1.e  
 Integration File signal 2: autoint2.e  
 Quant Time: Sep 07 10:45:03 2022  
 Quant Method : Z:\pestpcbsrv\HPCHEM1\ECD\_0\methods\P0082922.M  
 Quant Title : GC EXTRACTABLES  
 QLast Update : Mon Aug 29 17:48:02 2022  
 Response via : Initial Calibration  
 Integrator: ChemStation

Volume Inj. : 2 µl  
 Signal #1 Phase : ZB-MR1 Signal #2 Phase: ZB-MR2  
 Signal #1 Info : 30Mx0.32mmx 0.50µ Signal #2 Info : 30M x 0.32mm x 0.25µm

	Compound	RT#1	RT#2	Resp#1	Resp#2	ng/ml	ng/ml
42)	L9 AR-1268-2	8.793	7.551	15553266	11851949	58.145	92.188 #
43)	L9 AR-1268-3	9.044	7.767	3092177	7057925	13.336	65.527 #
44)	L9 AR-1268-4	9.463	8.034	1083087	12136732	10.964	266.272 #
45)	L9 AR-1268-5	9.920	8.322	4854743	531045	6.663	1.626 #

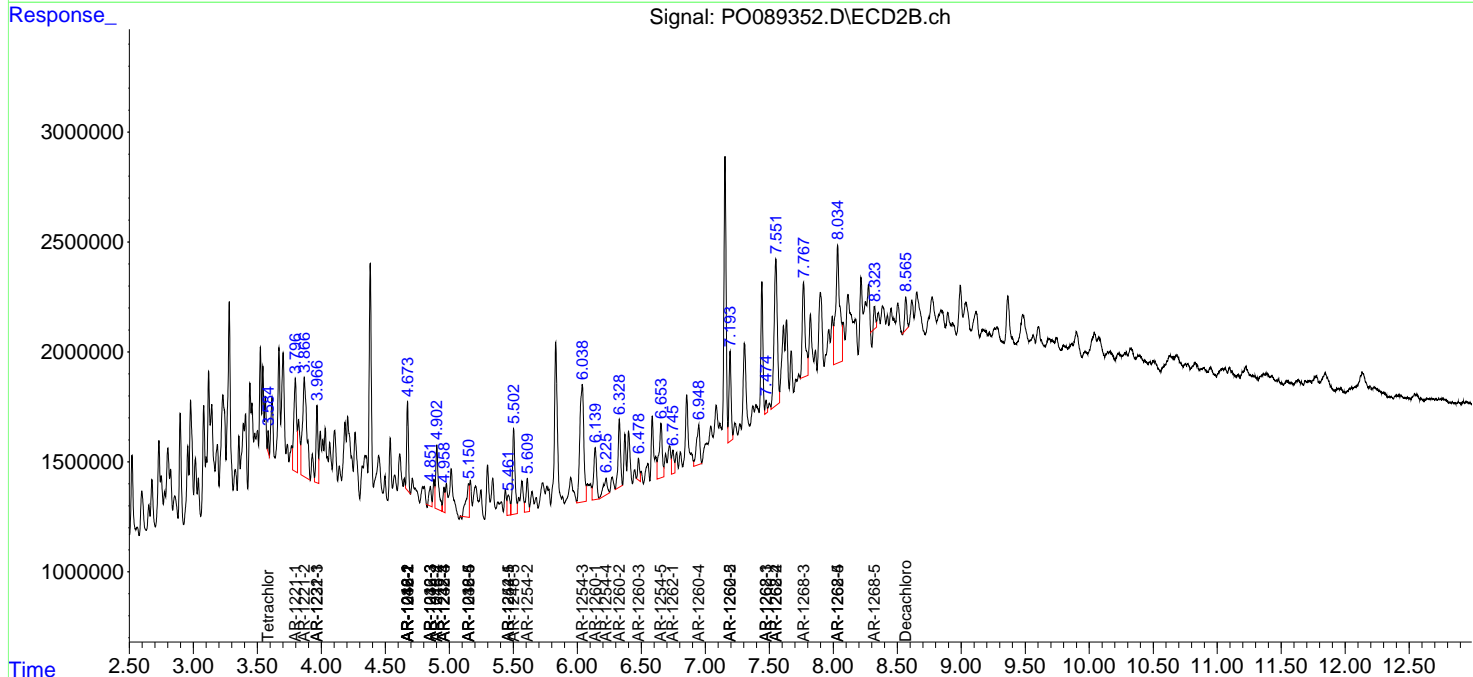
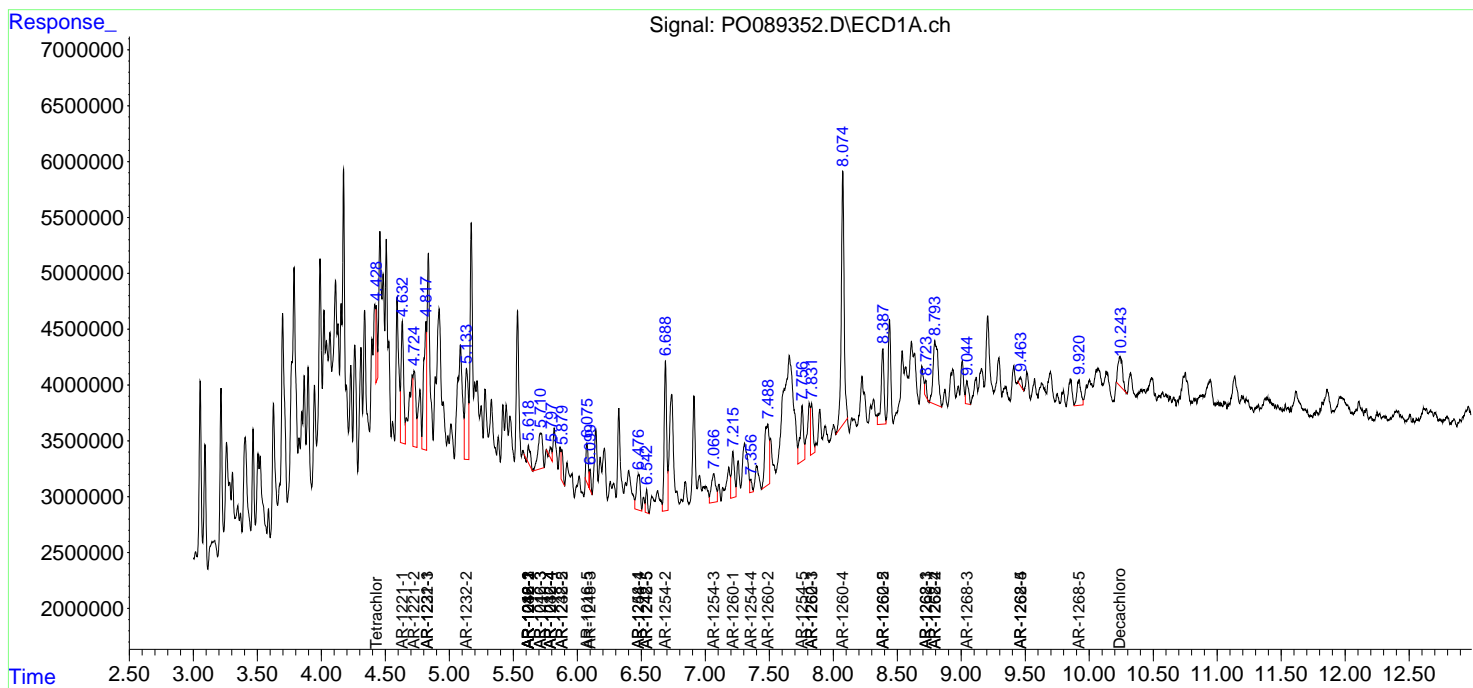
(f)=RT Delta > 1/2 Window (#)=Amounts differ by > 25% (m)=manual int.

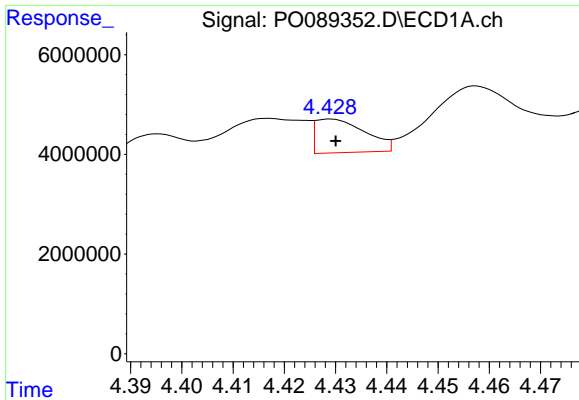
Data Path : Z:\pestpcbsrv\HPCHEM1\ECD\_O\Data\PO090622\  
 Data File : PO089352.D  
 Signal(s) : Signal #1: ECD1A.ch Signal #2: ECD2B.ch  
 Acq On : 07 Sep 2022 08:33  
 Operator : YP/AJ  
 Sample : N4505-02 10X  
 Misc :  
 ALS Vial : 48 Sample Multiplier: 1

Instrument :  
 ECD\_O  
 ClientSampleId :

Integration File signal 1: autoint1.e  
 Integration File signal 2: autoint2.e  
 Quant Time: Sep 07 10:45:03 2022  
 Quant Method : Z:\pestpcbsrv\HPCHEM1\ECD\_O\methods\PO082922.M  
 Quant Title : GC EXTRACTABLES  
 QLast Update : Mon Aug 29 17:48:02 2022  
 Response via : Initial Calibration  
 Integrator: ChemStation

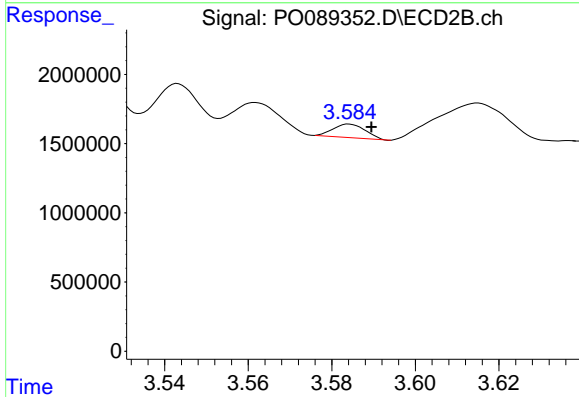
Volume Inj. : 2 µl  
 Signal #1 Phase : ZB-MR1 Signal #2 Phase: ZB-MR2  
 Signal #1 Info : 30Mx0.32mmx 0.50µ Signal #2 Info : 30M x 0.32mm x 0.25µm



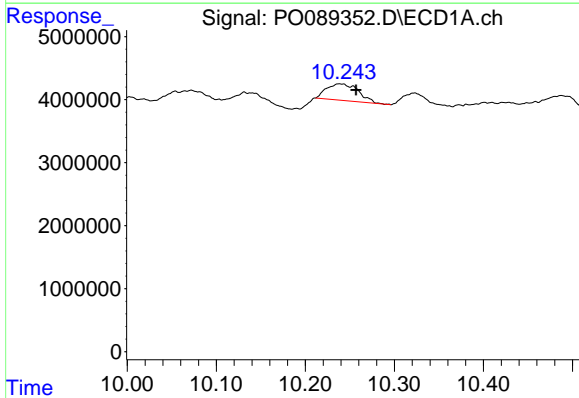


#1 Tetrachloro-m-xylene  
 R.T.: 4.429 min  
 Delta R.T.: -0.001 min  
 Response: 4554343  
 Conc: 1.21 ng/ml

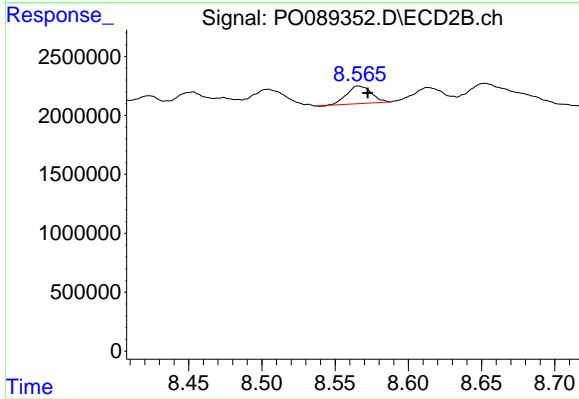
Instrument :  
 ECD\_O  
 ClientSampleId :



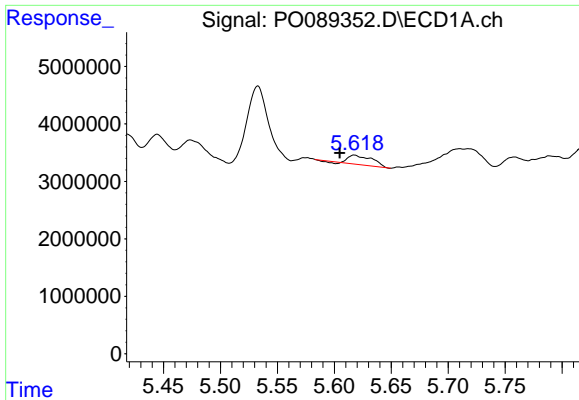
#1 Tetrachloro-m-xylene  
 R.T.: 3.584 min  
 Delta R.T.: -0.005 min  
 Response: 525164  
 Conc: 0.54 ng/ml



#2 Decachlorobiphenyl  
 R.T.: 10.238 min  
 Delta R.T.: -0.019 min  
 Response: 6500042  
 Conc: 2.82 ng/ml



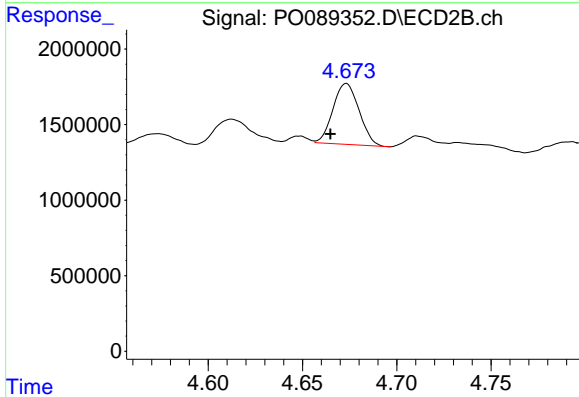
#2 Decachlorobiphenyl  
 R.T.: 8.566 min  
 Delta R.T.: -0.006 min  
 Response: 1721464  
 Conc: 1.95 ng/ml



#3 AR-1016-1

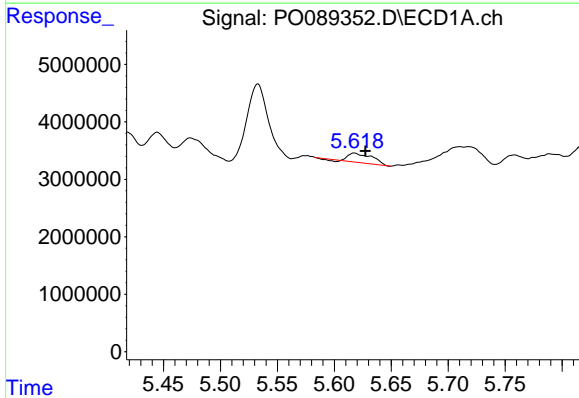
R.T.: 5.618 min  
 Delta R.T.: 0.013 min  
 Response: 2320914  
 Conc: 20.64 ng/ml

Instrument :  
 ECD\_O  
 ClientSampleId :



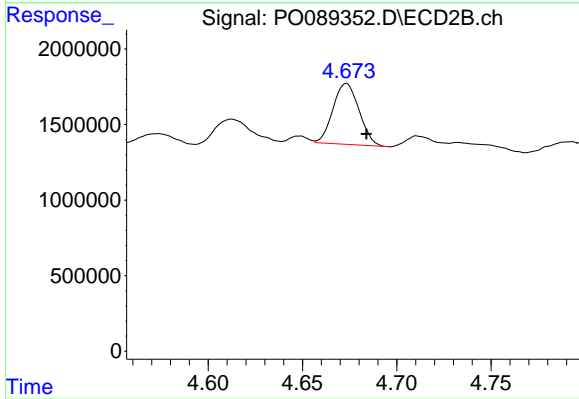
#3 AR-1016-1

R.T.: 4.673 min  
 Delta R.T.: 0.008 min  
 Response: 3881725  
 Conc: 107.49 ng/ml



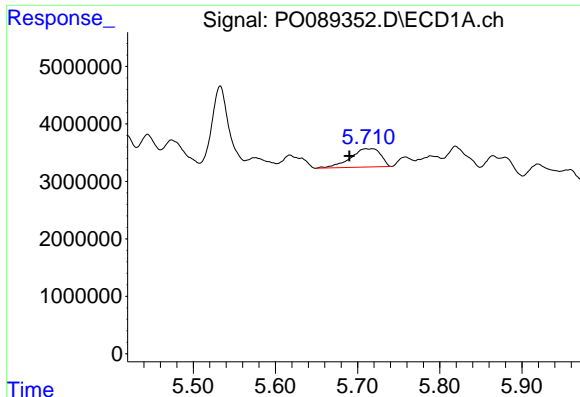
#4 AR-1016-2

R.T.: 5.618 min  
 Delta R.T.: -0.010 min  
 Response: 2320914  
 Conc: 14.73 ng/ml



#4 AR-1016-2

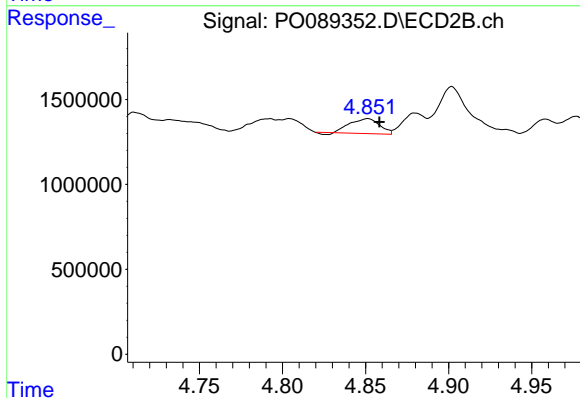
R.T.: 4.673 min  
 Delta R.T.: -0.011 min  
 Response: 3881725  
 Conc: 78.63 ng/ml



#5 AR-1016-3

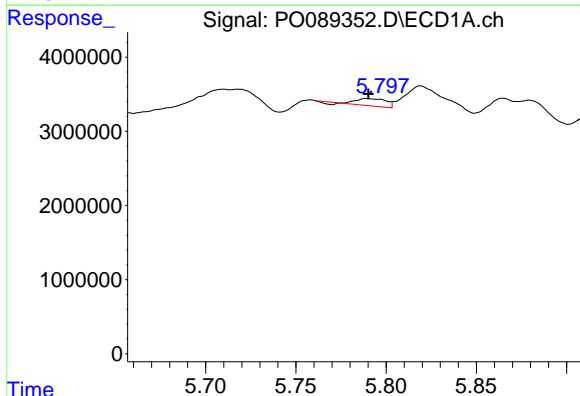
R.T.: 5.710 min  
 Delta R.T.: 0.020 min  
 Response: 8144523  
 Conc: 83.51 ng/ml

Instrument :  
 ECD\_O  
 ClientSampleId :



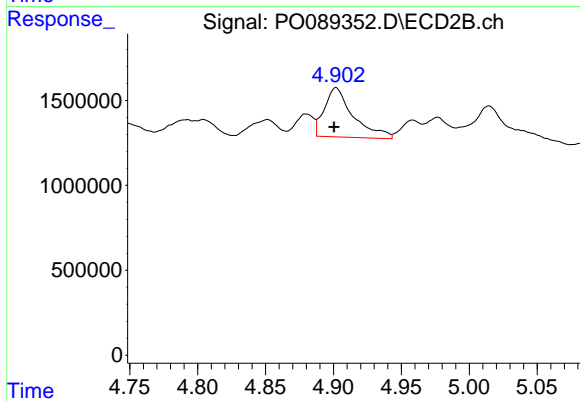
#5 AR-1016-3

R.T.: 4.851 min  
 Delta R.T.: -0.007 min  
 Response: 1060701  
 Conc: 39.88 ng/ml



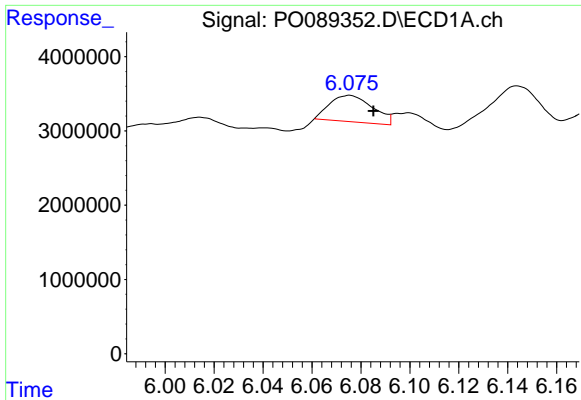
#6 AR-1016-4

R.T.: 5.789 min  
 Delta R.T.: 0.000 min  
 Response: 1028807  
 Conc: 13.07 ng/ml



#6 AR-1016-4

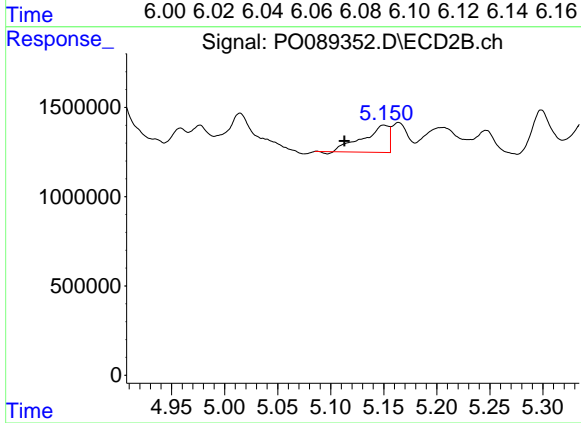
R.T.: 4.902 min  
 Delta R.T.: 0.001 min  
 Response: 4289963  
 Conc: 199.32 ng/ml



#7 AR-1016-5

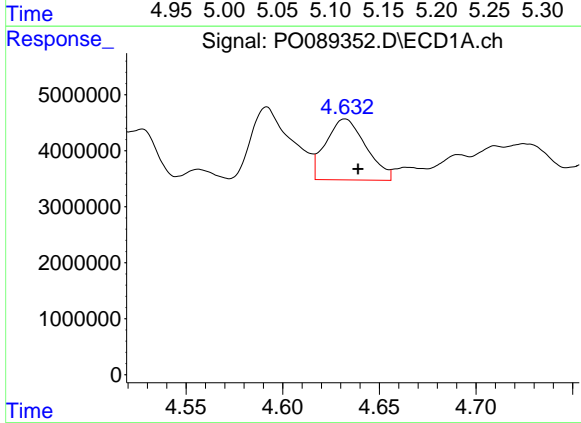
R.T.: 6.075 min  
 Delta R.T.: -0.010 min  
 Response: 4329369  
 Conc: 56.41 ng/ml

Instrument :  
 ECD\_O  
 ClientSampleId :



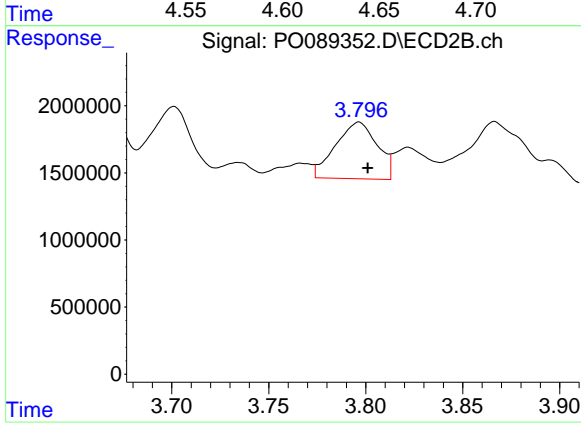
#7 AR-1016-5

R.T.: 5.150 min  
 Delta R.T.: 0.037 min  
 Response: 2554369  
 Conc: 87.54 ng/ml



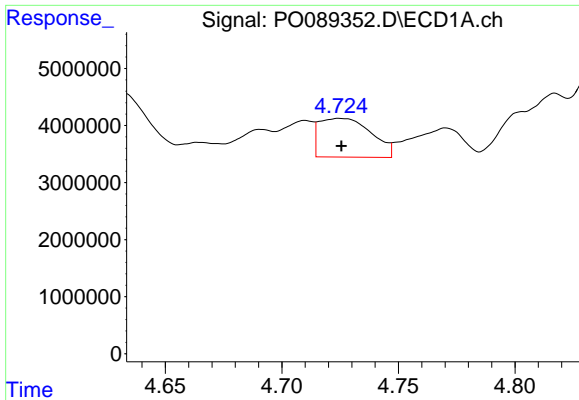
#8 AR-1221-1

R.T.: 4.632 min  
 Delta R.T.: -0.007 min  
 Response: 15735556  
 Conc: 370.07 ng/ml



#8 AR-1221-1

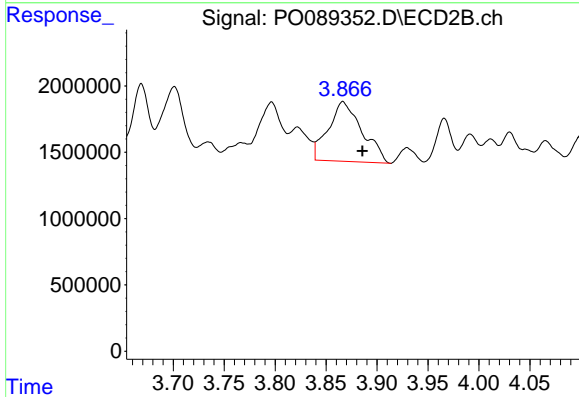
R.T.: 3.797 min  
 Delta R.T.: -0.004 min  
 Response: 6335783  
 Conc: 553.70 ng/ml



#9 AR-1221-2

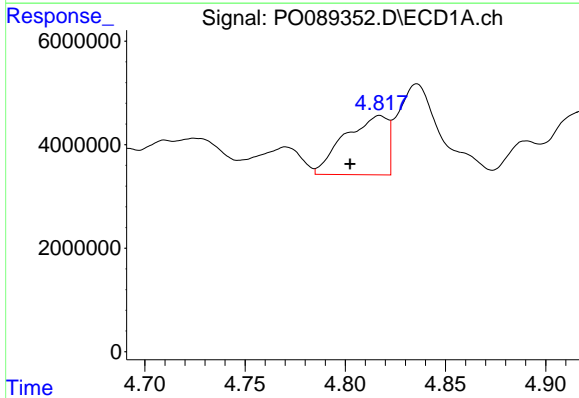
R.T.: 4.725 min  
 Delta R.T.: 0.000 min  
 Response: 10549806  
 Conc: 337.62 ng/ml

Instrument :  
 ECD\_O  
 ClientSampleId :



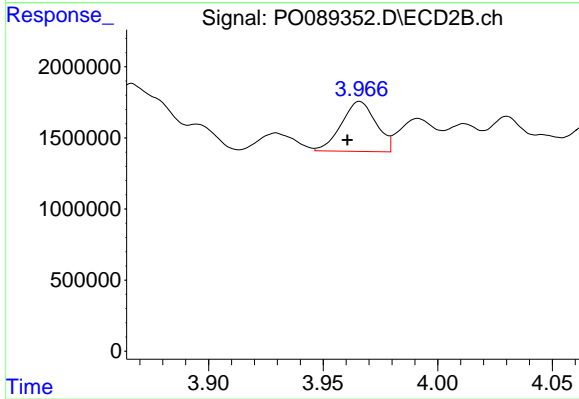
#9 AR-1221-2

R.T.: 3.866 min  
 Delta R.T.: -0.019 min  
 Response: 10360622  
 Conc: 1184.50 ng/ml



#10 AR-1221-3

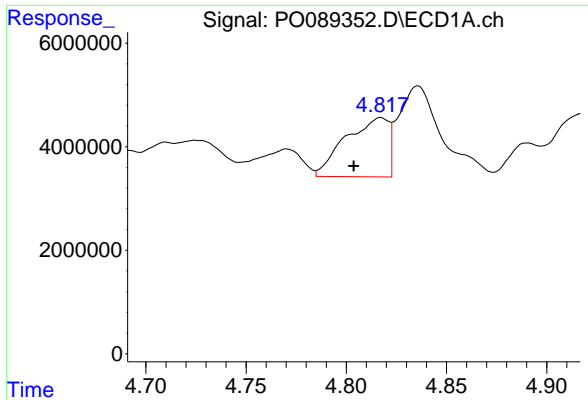
R.T.: 4.817 min  
 Delta R.T.: 0.015 min  
 Response: 17106346  
 Conc: 184.26 ng/ml



#10 AR-1221-3

R.T.: 3.966 min  
 Delta R.T.: 0.005 min  
 Response: 3700508  
 Conc: 132.94 ng/ml

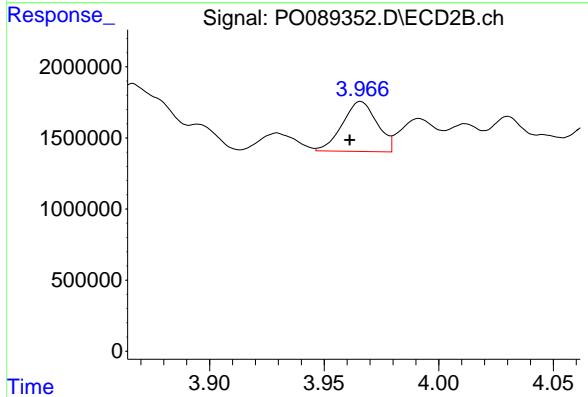




#11 AR-1232-1

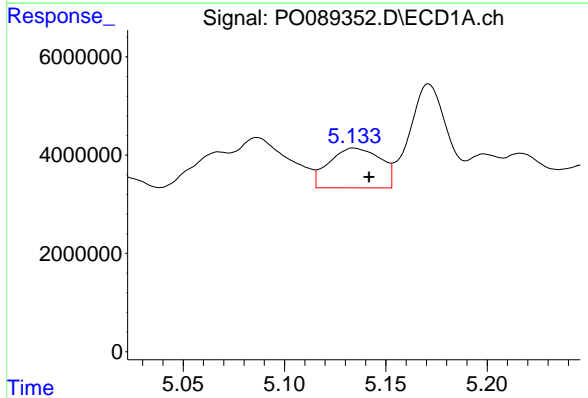
R.T.: 4.817 min  
 Delta R.T.: 0.013 min  
 Response: 17106346  
 Conc: 232.56 ng/ml

Instrument :  
 ECD\_O  
 ClientSampleId :



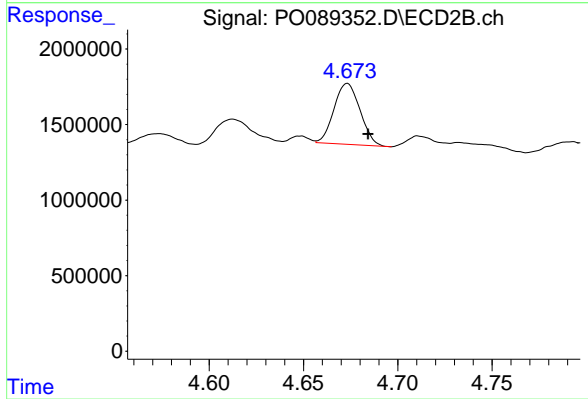
#11 AR-1232-1

R.T.: 3.966 min  
 Delta R.T.: 0.005 min  
 Response: 3700508  
 Conc: 161.11 ng/ml



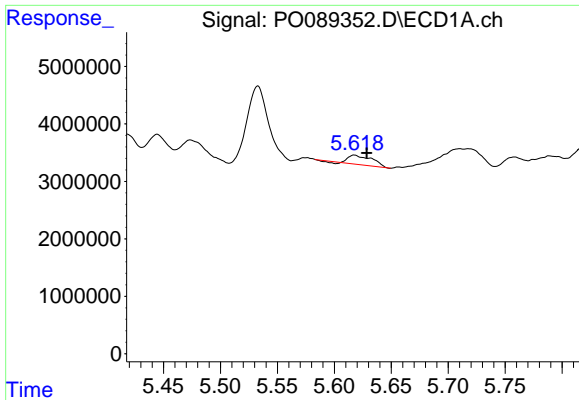
#12 AR-1232-2

R.T.: 5.134 min  
 Delta R.T.: -0.008 min  
 Response: 14322129  
 Conc: 381.92 ng/ml



#12 AR-1232-2

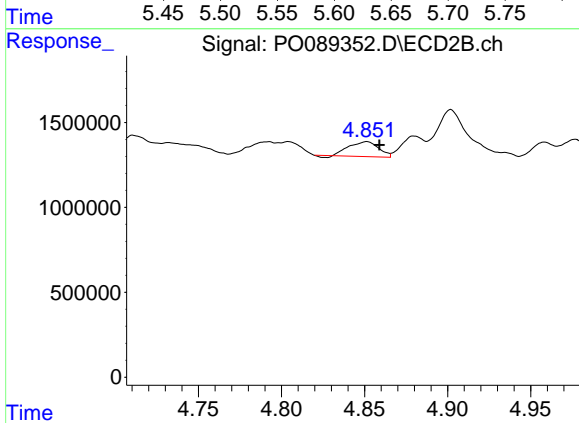
R.T.: 4.673 min  
 Delta R.T.: -0.011 min  
 Response: 3881725  
 Conc: 183.52 ng/ml



#13 AR-1232-3

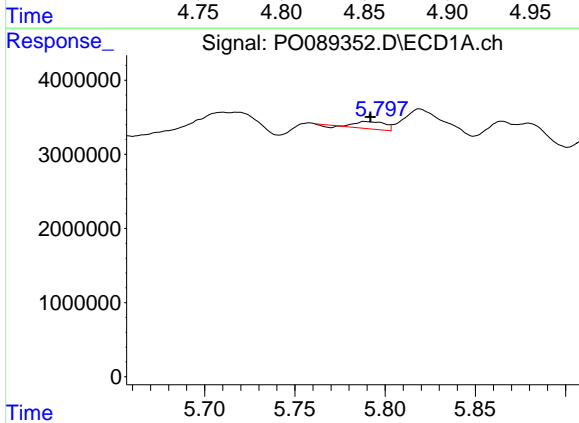
R.T.: 5.618 min  
 Delta R.T.: -0.011 min  
 Response: 2320914  
 Conc: 34.77 ng/ml

Instrument :  
 ECD\_O  
 ClientSampleId :



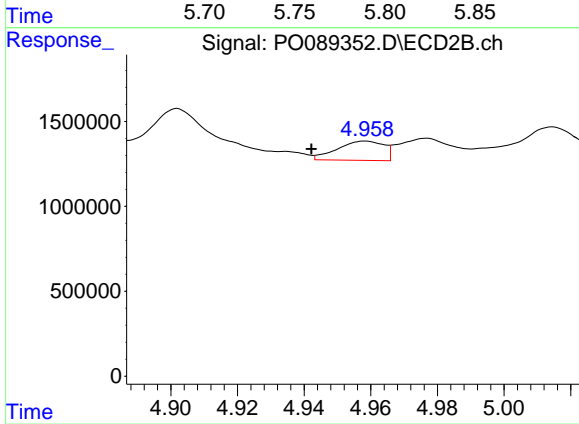
#13 AR-1232-3

R.T.: 4.851 min  
 Delta R.T.: -0.008 min  
 Response: 1060701  
 Conc: 95.16 ng/ml



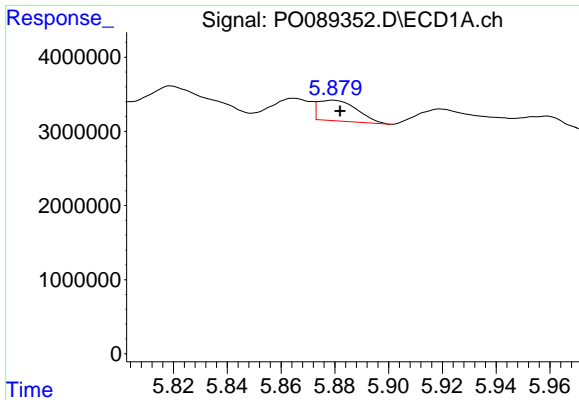
#14 AR-1232-4

R.T.: 5.789 min  
 Delta R.T.: -0.002 min  
 Response: 1028807  
 Conc: 31.29 ng/ml



#14 AR-1232-4

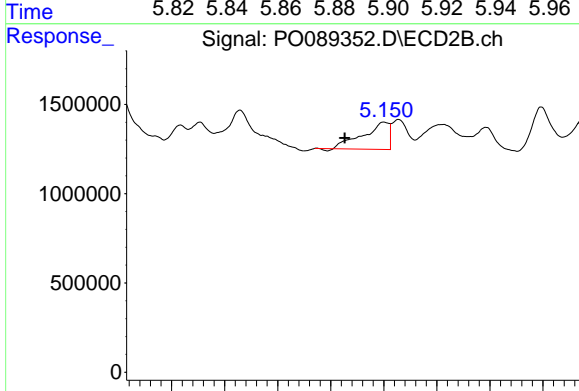
R.T.: 4.958 min  
 Delta R.T.: 0.016 min  
 Response: 1096823  
 Conc: 107.43 ng/ml



#15 AR-1232-5

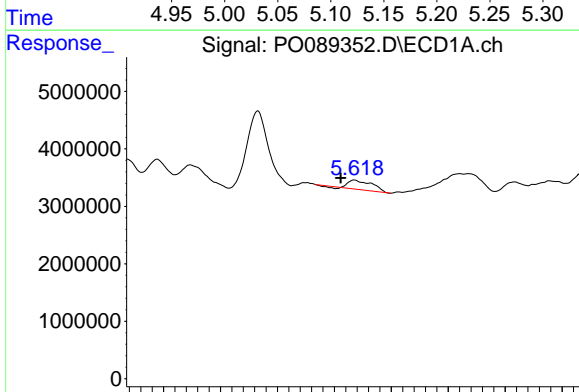
R.T.: 5.879 min  
 Delta R.T.: -0.003 min  
 Response: 2803420  
 Conc: 103.74 ng/ml

Instrument :  
 ECD\_O  
 ClientSampleId :



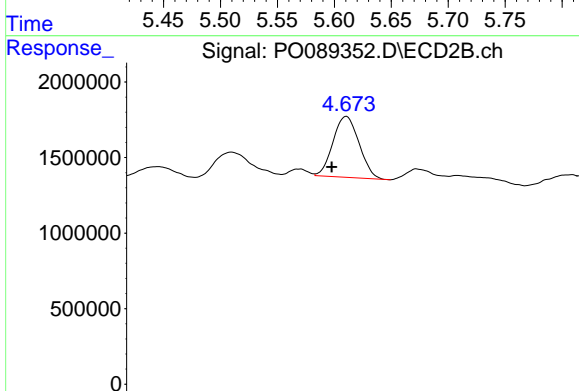
#15 AR-1232-5

R.T.: 5.150 min  
 Delta R.T.: 0.037 min  
 Response: 2554369  
 Conc: 218.86 ng/ml



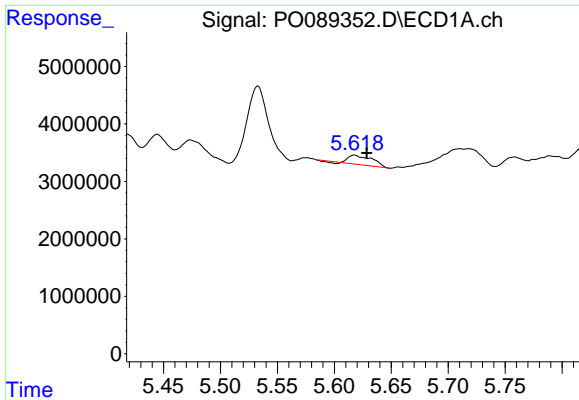
#16 AR-1242-1

R.T.: 5.618 min  
 Delta R.T.: 0.012 min  
 Response: 2320914  
 Conc: 26.26 ng/ml



#16 AR-1242-1

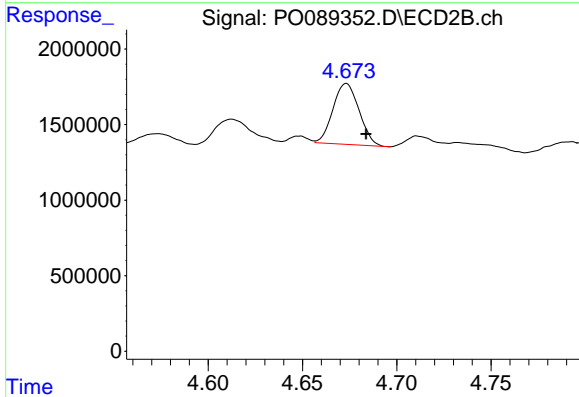
R.T.: 4.673 min  
 Delta R.T.: 0.008 min  
 Response: 3881725  
 Conc: 133.25 ng/ml



#17 AR-1242-2

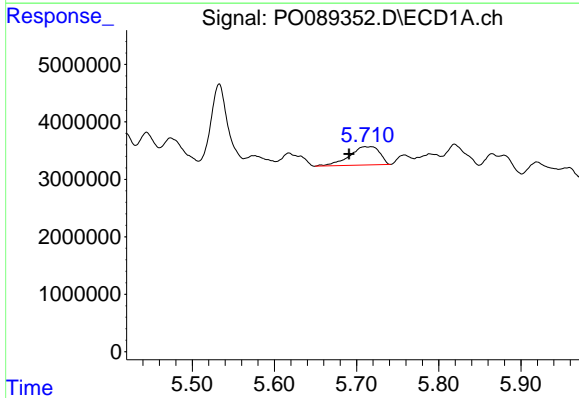
R.T.: 5.618 min  
 Delta R.T.: -0.011 min  
 Response: 2320914  
 Conc: 18.75 ng/ml

Instrument :  
 ECD\_O  
 ClientSampleId :



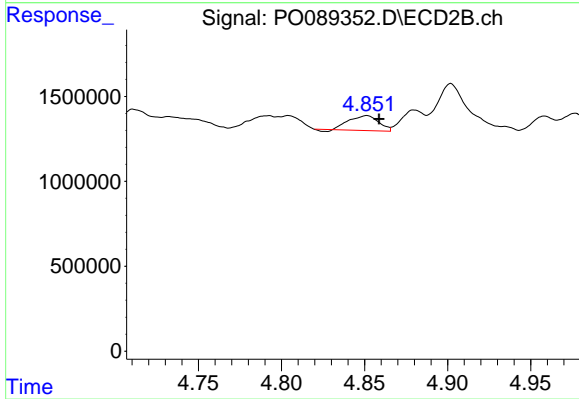
#17 AR-1242-2

R.T.: 4.673 min  
 Delta R.T.: -0.011 min  
 Response: 3881725  
 Conc: 97.99 ng/ml



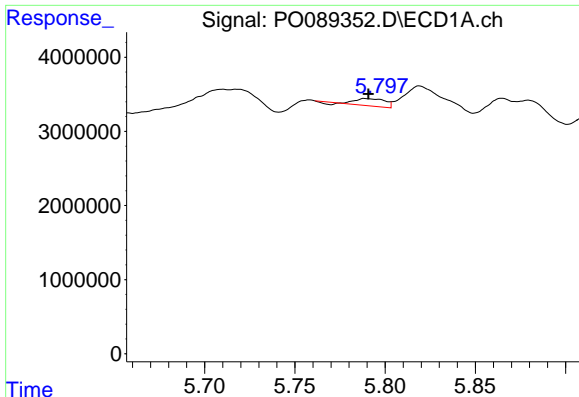
#18 AR-1242-3

R.T.: 5.710 min  
 Delta R.T.: 0.019 min  
 Response: 8144523  
 Conc: 105.96 ng/ml



#18 AR-1242-3

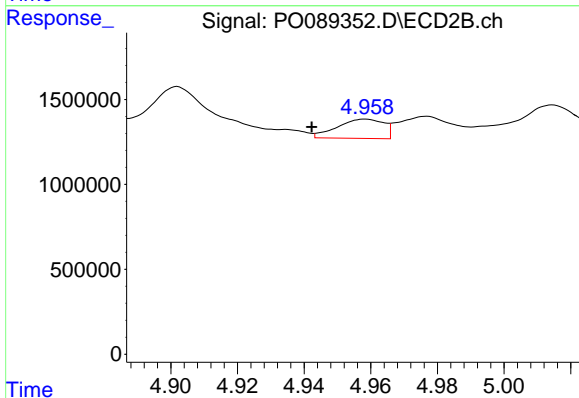
R.T.: 4.851 min  
 Delta R.T.: -0.007 min  
 Response: 1060701  
 Conc: 49.78 ng/ml



#19 AR-1242-4

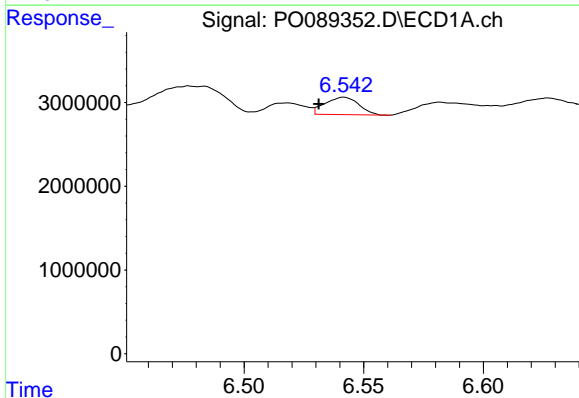
R.T.: 5.789 min  
 Delta R.T.: -0.002 min  
 Response: 1028807  
 Conc: 16.56 ng/ml

Instrument :  
 ECD\_O  
 ClientSampleId :



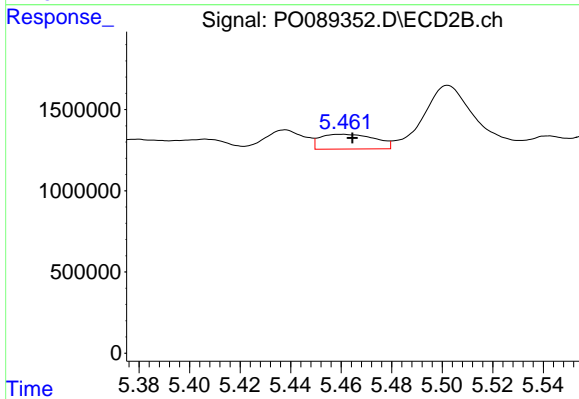
#19 AR-1242-4

R.T.: 4.958 min  
 Delta R.T.: 0.016 min  
 Response: 1096823  
 Conc: 50.41 ng/ml



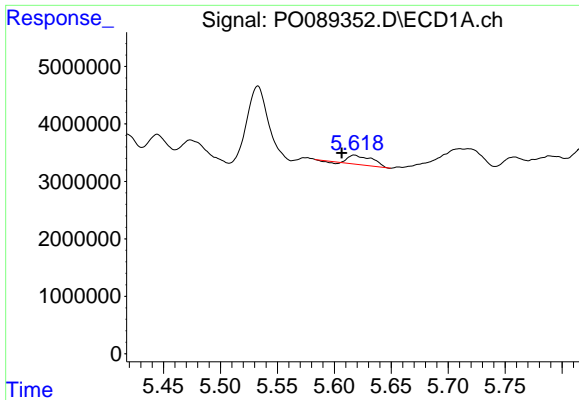
#20 AR-1242-5

R.T.: 6.542 min  
 Delta R.T.: 0.010 min  
 Response: 2030842  
 Conc: 31.55 ng/ml



#20 AR-1242-5

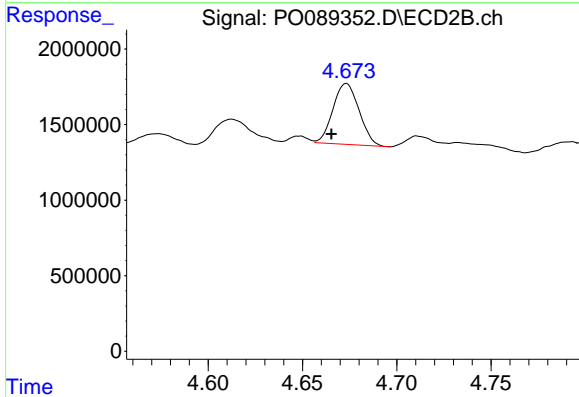
R.T.: 5.460 min  
 Delta R.T.: -0.004 min  
 Response: 1372873  
 Conc: 50.26 ng/ml



#21 AR-1248-1

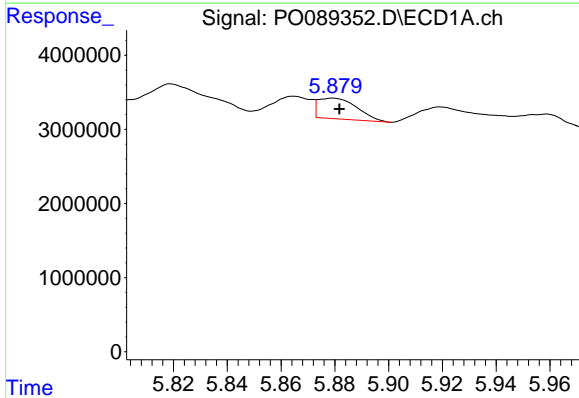
R.T.: 5.618 min  
 Delta R.T.: 0.011 min  
 Response: 2320914  
 Conc: 33.70 ng/ml

Instrument :  
 ECD\_O  
 ClientSampleId :



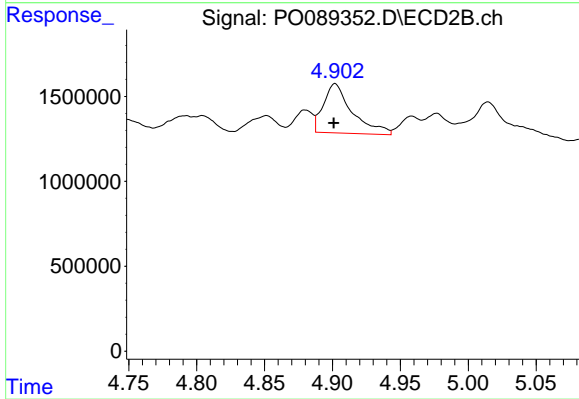
#21 AR-1248-1

R.T.: 4.673 min  
 Delta R.T.: 0.008 min  
 Response: 3881725  
 Conc: 172.83 ng/ml



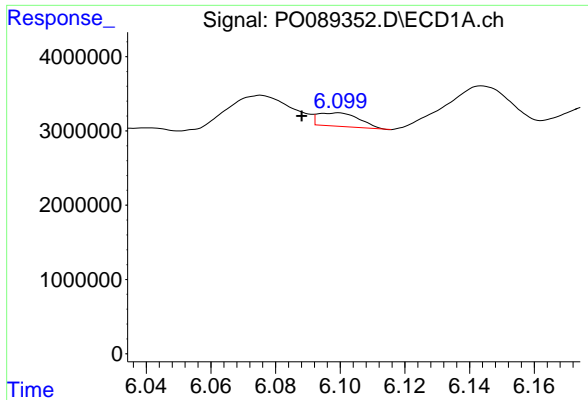
#22 AR-1248-2

R.T.: 5.879 min  
 Delta R.T.: -0.002 min  
 Response: 2803420  
 Conc: 28.41 ng/ml



#22 AR-1248-2

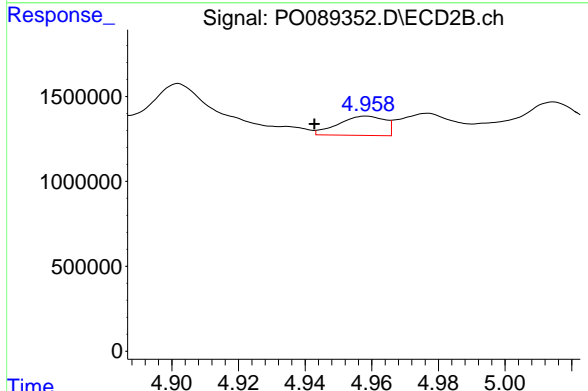
R.T.: 4.902 min  
 Delta R.T.: 0.000 min  
 Response: 4289963  
 Conc: 131.16 ng/ml



#23 AR-1248-3

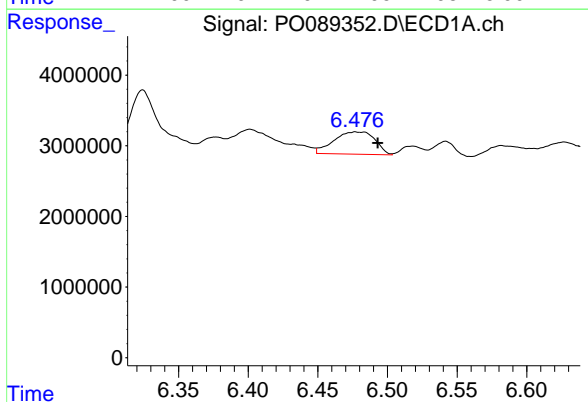
R.T.: 6.099 min  
 Delta R.T.: 0.011 min  
 Response: 1611501  
 Conc: 15.38 ng/ml

Instrument :  
 ECD\_O  
 ClientSampleId :



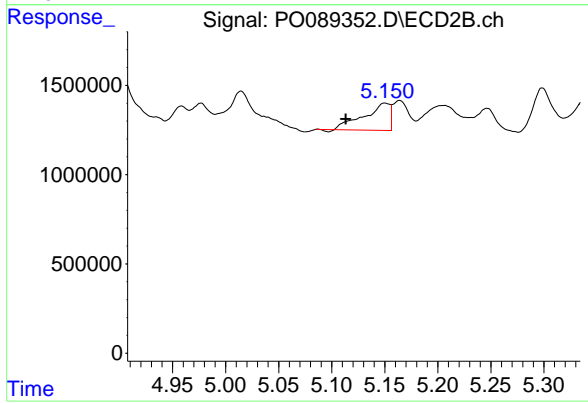
#23 AR-1248-3

R.T.: 4.958 min  
 Delta R.T.: 0.016 min  
 Response: 1096823  
 Conc: 32.17 ng/ml



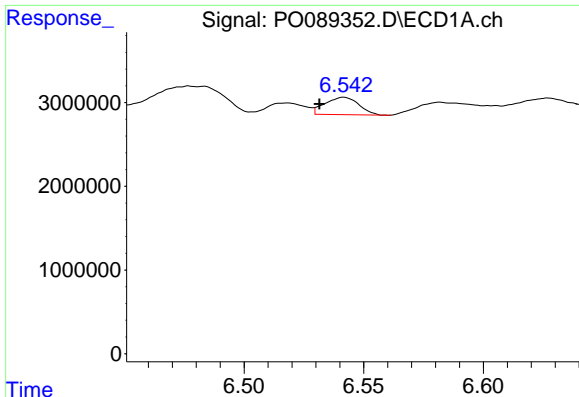
#24 AR-1248-4

R.T.: 6.477 min  
 Delta R.T.: -0.016 min  
 Response: 6529425  
 Conc: 56.75 ng/ml



#24 AR-1248-4

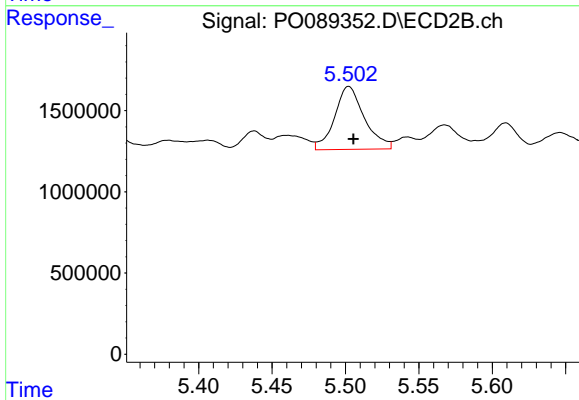
R.T.: 5.150 min  
 Delta R.T.: 0.037 min  
 Response: 2554369  
 Conc: 62.67 ng/ml



#25 AR-1248-5

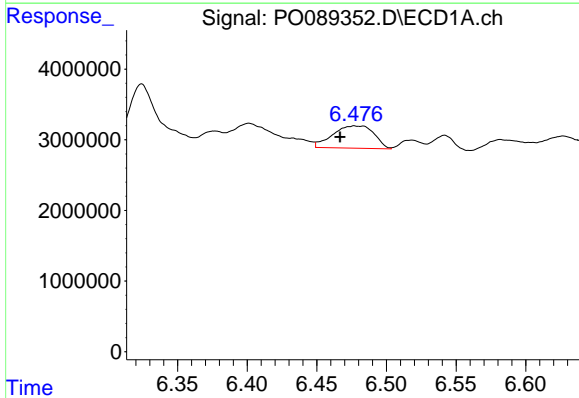
R.T.: 6.542 min  
 Delta R.T.: 0.010 min  
 Response: 2030842  
 Conc: 17.94 ng/ml

Instrument :  
 ECD\_O  
 ClientSampleId :



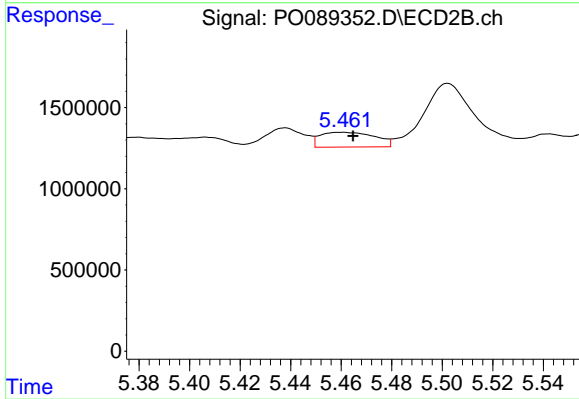
#25 AR-1248-5

R.T.: 5.502 min  
 Delta R.T.: -0.003 min  
 Response: 5487859  
 Conc: 138.10 ng/ml



#26 AR-1254-1

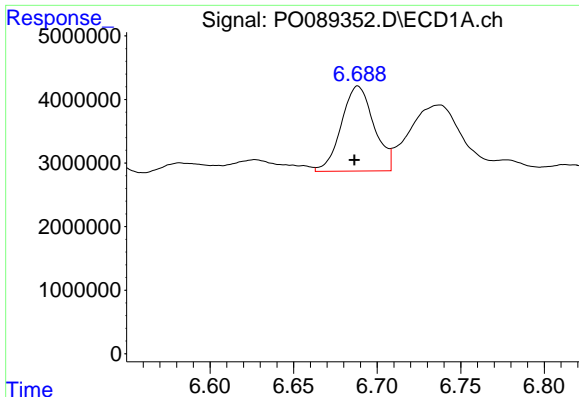
R.T.: 6.477 min  
 Delta R.T.: 0.010 min  
 Response: 6529425  
 Conc: 56.77 ng/ml



#26 AR-1254-1

R.T.: 5.460 min  
 Delta R.T.: -0.005 min  
 Response: 1372873  
 Conc: 23.21 ng/ml

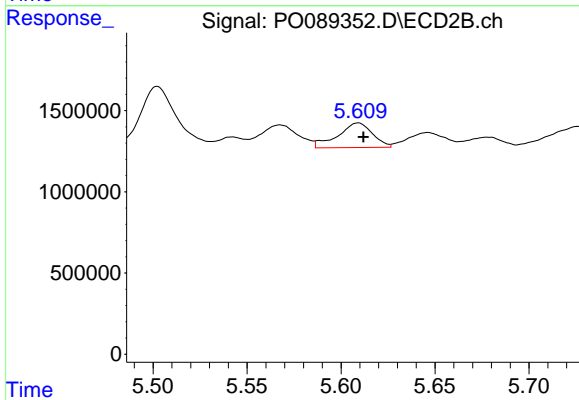




#27 AR-1254-2

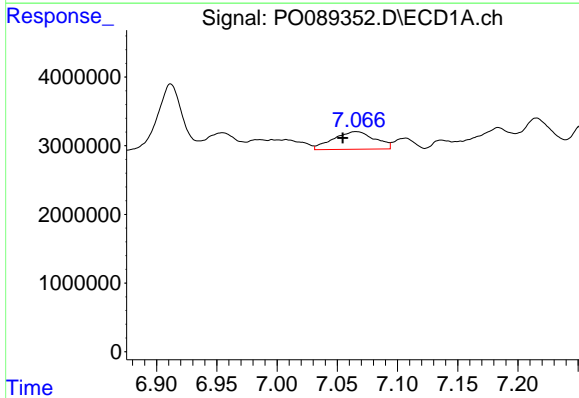
R.T.: 6.689 min  
 Delta R.T.: 0.002 min  
 Response: 18145380  
 Conc: 106.63 ng/ml

Instrument :  
 ECD\_O  
 ClientSampleId :



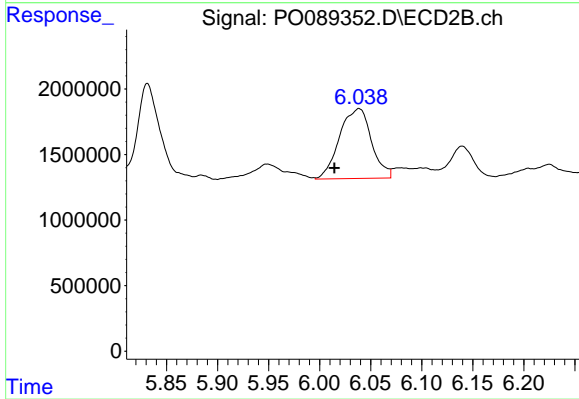
#27 AR-1254-2

R.T.: 5.609 min  
 Delta R.T.: -0.003 min  
 Response: 1958161  
 Conc: 38.39 ng/ml



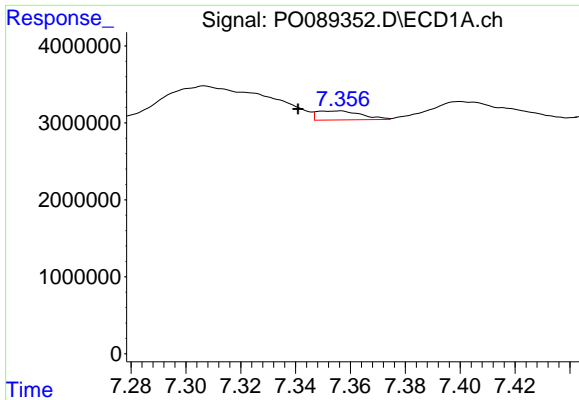
#28 AR-1254-3

R.T.: 7.066 min  
 Delta R.T.: 0.011 min  
 Response: 6168290  
 Conc: 35.52 ng/ml



#28 AR-1254-3

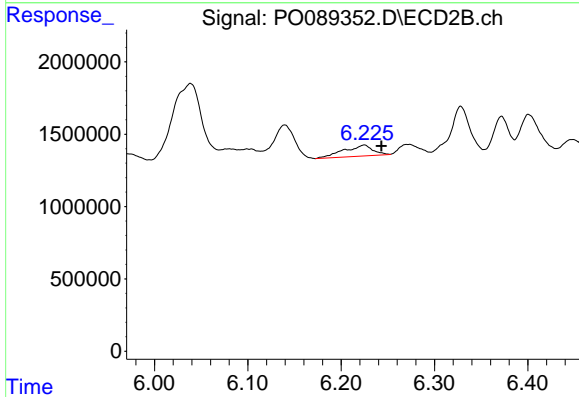
R.T.: 6.039 min  
 Delta R.T.: 0.024 min  
 Response: 11615466  
 Conc: 147.08 ng/ml



#29 AR-1254-4

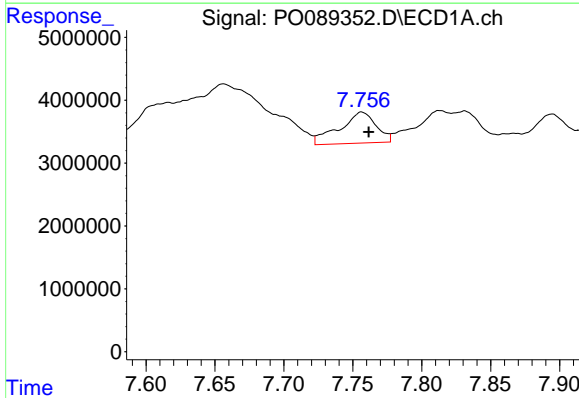
R.T.: 7.356 min  
 Delta R.T.: 0.015 min  
 Response: 1315388  
 Conc: 10.54 ng/ml

Instrument :  
 ECD\_O  
 ClientSampleId :



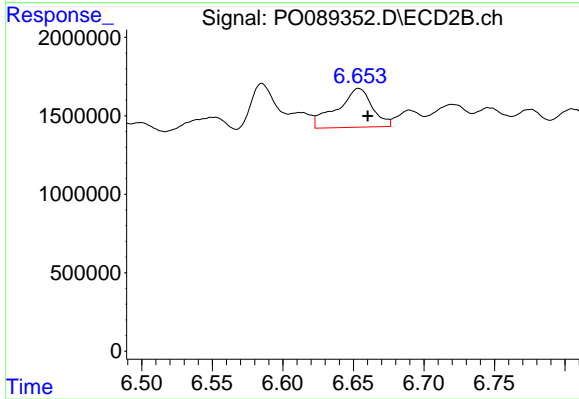
#29 AR-1254-4

R.T.: 6.225 min  
 Delta R.T.: -0.018 min  
 Response: 1654766  
 Conc: 33.38 ng/ml



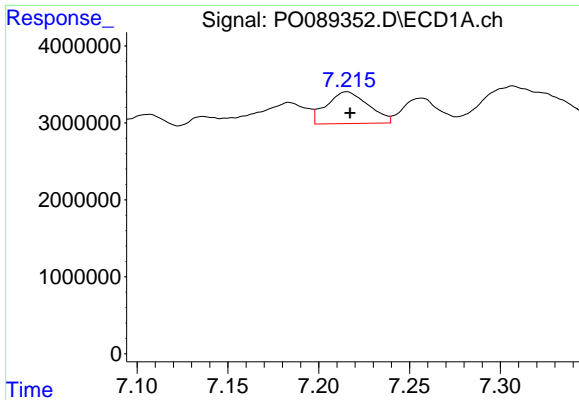
#30 AR-1254-5

R.T.: 7.757 min  
 Delta R.T.: -0.005 min  
 Response: 9169995  
 Conc: 71.19 ng/ml



#30 AR-1254-5

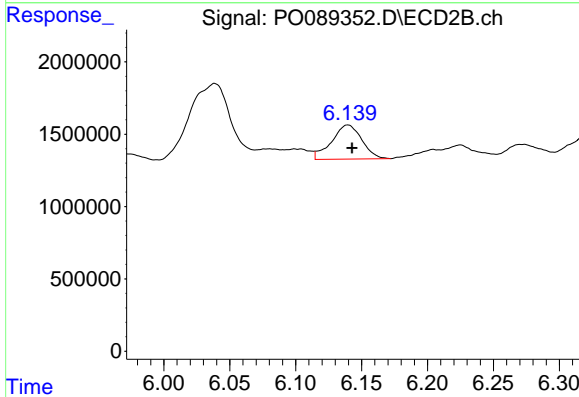
R.T.: 6.654 min  
 Delta R.T.: -0.006 min  
 Response: 4289175  
 Conc: 63.44 ng/ml



#31 AR-1260-1

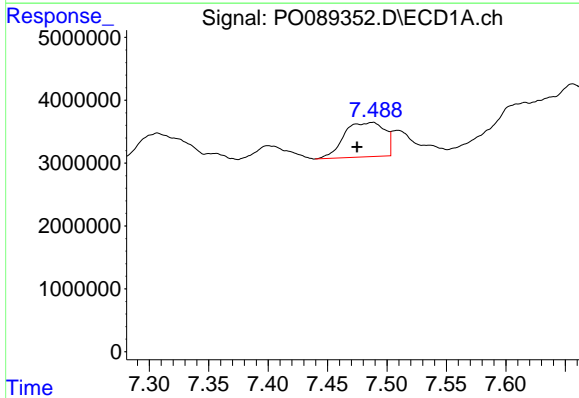
R.T.: 7.215 min  
 Delta R.T.: -0.002 min  
 Response: 6594637  
 Conc: 48.97 ng/ml

Instrument :  
 ECD\_O  
 ClientSampleId :



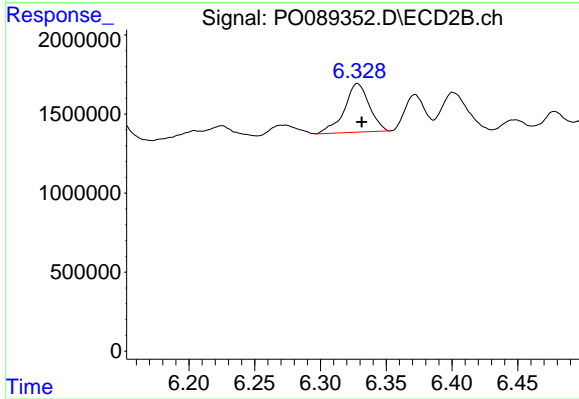
#31 AR-1260-1

R.T.: 6.140 min  
 Delta R.T.: -0.003 min  
 Response: 3753841  
 Conc: 66.91 ng/ml



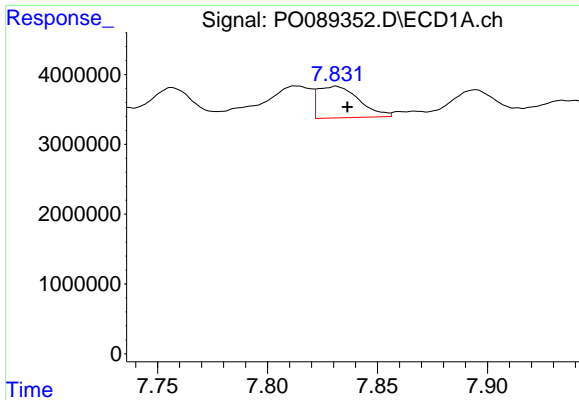
#32 AR-1260-2

R.T.: 7.488 min  
 Delta R.T.: 0.013 min  
 Response: 13014288  
 Conc: 85.28 ng/ml



#32 AR-1260-2

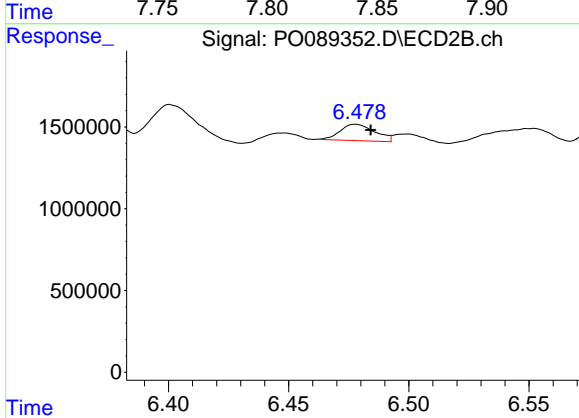
R.T.: 6.328 min  
 Delta R.T.: -0.003 min  
 Response: 4060289  
 Conc: 59.75 ng/ml



#33 AR-1260-3

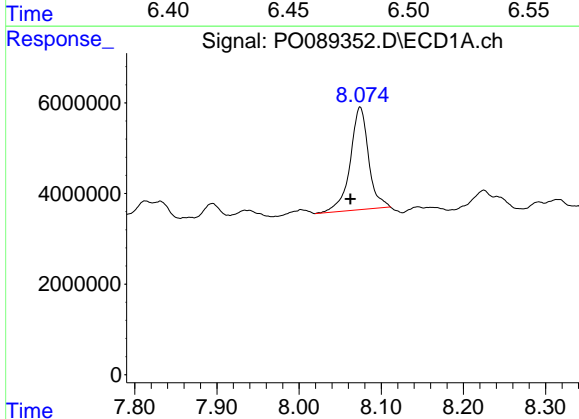
R.T.: 7.831 min  
 Delta R.T.: -0.005 min  
 Response: 5850454  
 Conc: 52.36 ng/ml

Instrument :  
 ECD\_O  
 ClientSampleId :



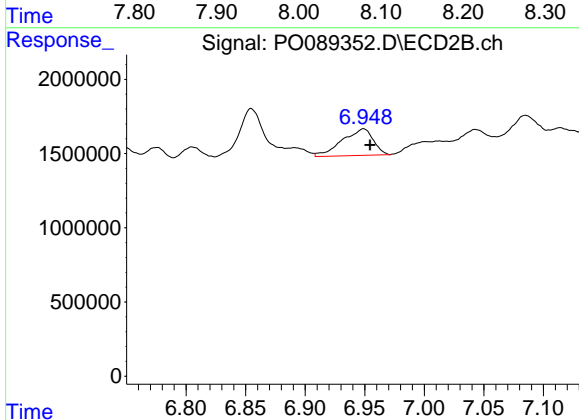
#33 AR-1260-3

R.T.: 6.478 min  
 Delta R.T.: -0.006 min  
 Response: 1004924  
 Conc: 16.38 ng/ml



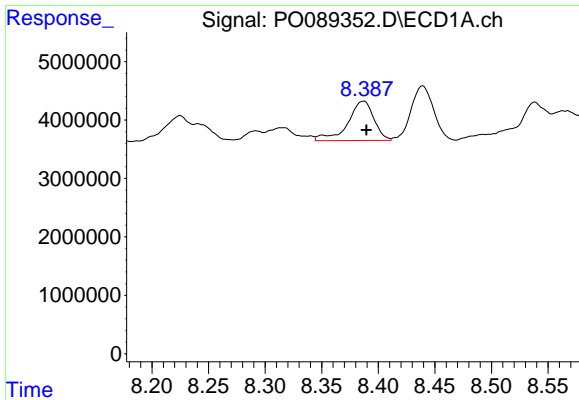
#34 AR-1260-4

R.T.: 8.074 min  
 Delta R.T.: 0.012 min  
 Response: 35335188  
 Conc: 286.23 ng/ml



#34 AR-1260-4

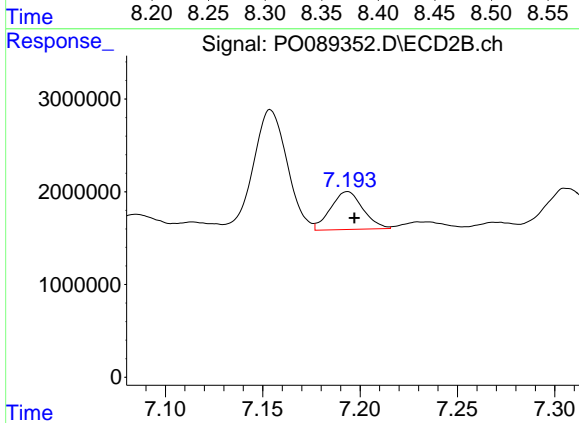
R.T.: 6.949 min  
 Delta R.T.: -0.005 min  
 Response: 3249891  
 Conc: 64.49 ng/ml



#35 AR-1260-5

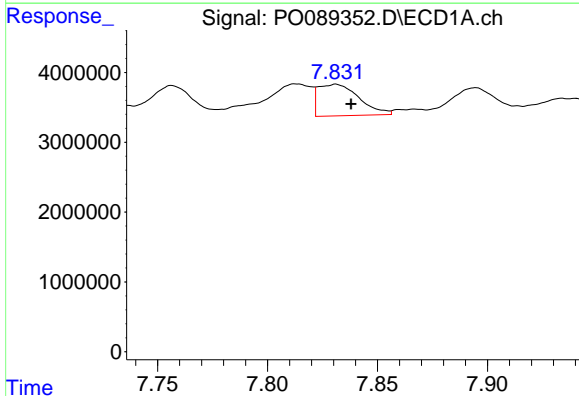
R.T.: 8.387 min  
 Delta R.T.: -0.002 min  
 Response: 10864268  
 Conc: 45.54 ng/ml

Instrument :  
 ECD\_O  
 ClientSampleId :



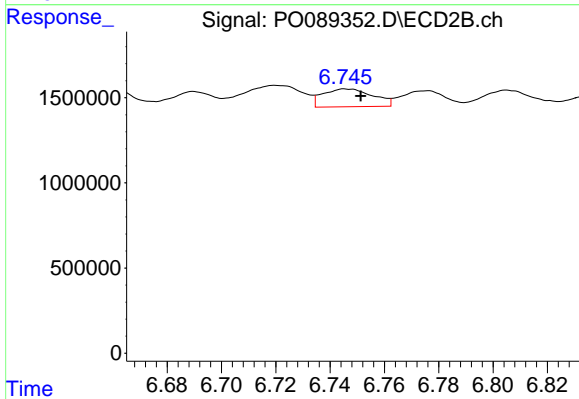
#35 AR-1260-5

R.T.: 7.194 min  
 Delta R.T.: -0.004 min  
 Response: 4737462  
 Conc: 41.41 ng/ml



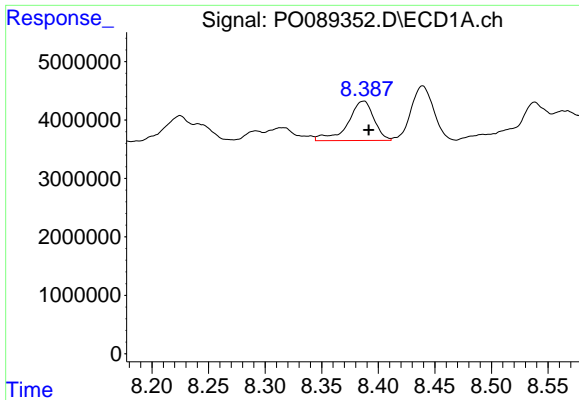
#36 AR-1262-1

R.T.: 7.831 min  
 Delta R.T.: -0.007 min  
 Response: 5850454  
 Conc: 38.77 ng/ml



#36 AR-1262-1

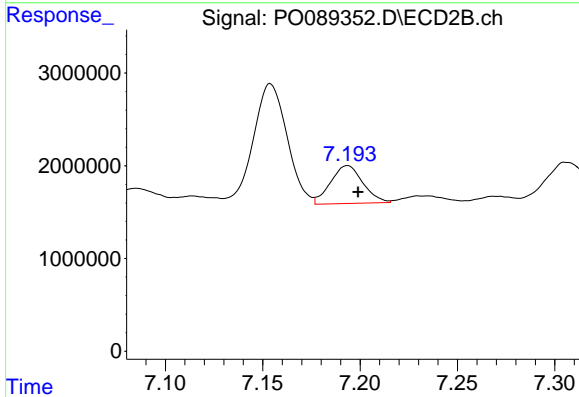
R.T.: 6.746 min  
 Delta R.T.: -0.005 min  
 Response: 1347222  
 Conc: 47.58 ng/ml



#37 AR-1262-2

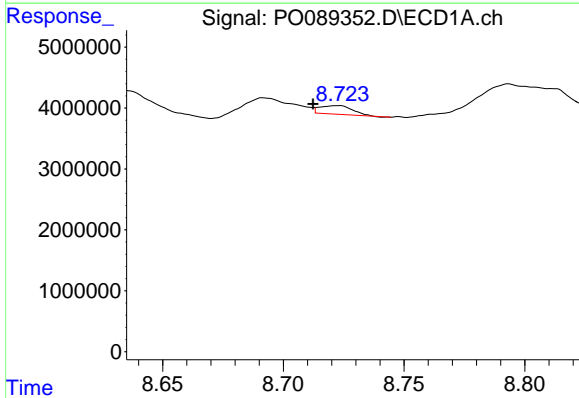
R.T.: 8.387 min  
 Delta R.T.: -0.004 min  
 Response: 10864268  
 Conc: 42.67 ng/ml

Instrument :  
 ECD\_O  
 ClientSampleId :



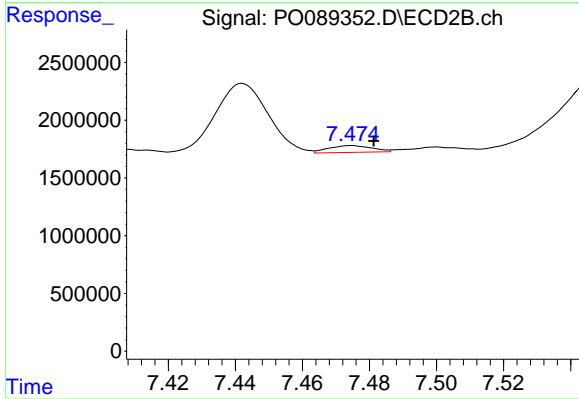
#37 AR-1262-2

R.T.: 7.194 min  
 Delta R.T.: -0.005 min  
 Response: 4737462  
 Conc: 39.28 ng/ml



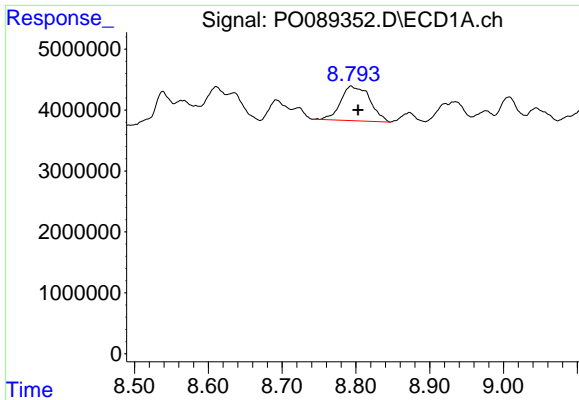
#38 AR-1262-3

R.T.: 8.722 min  
 Delta R.T.: 0.010 min  
 Response: 1310976  
 Conc: 7.67 ng/ml



#38 AR-1262-3

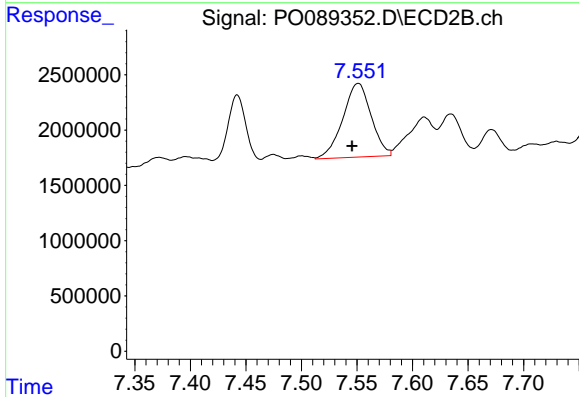
R.T.: 7.475 min  
 Delta R.T.: -0.007 min  
 Response: 532215  
 Conc: 11.05 ng/ml



#39 AR-1262-4

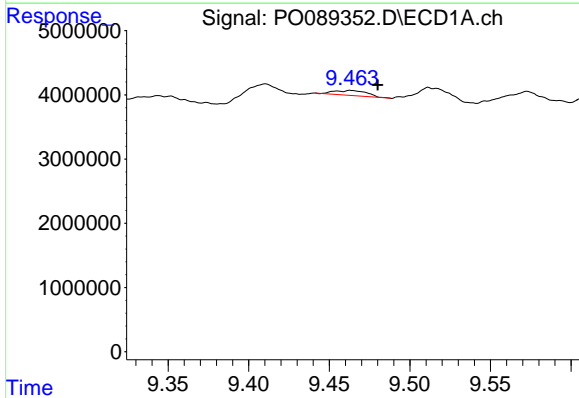
R.T.: 8.793 min  
 Delta R.T.: -0.010 min  
 Response: 15553266  
 Conc: 222.61 ng/ml

Instrument :  
 ECD\_O  
 ClientSampleId :



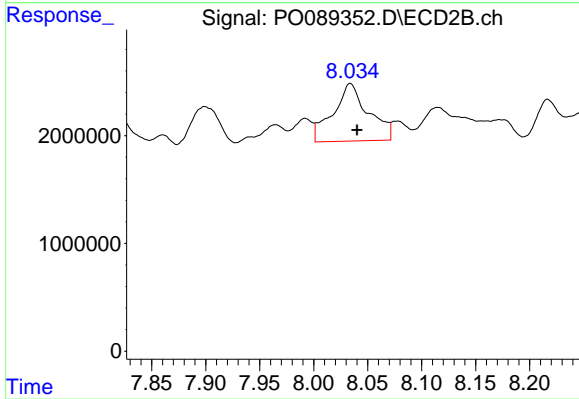
#39 AR-1262-4

R.T.: 7.551 min  
 Delta R.T.: 0.006 min  
 Response: 11851949  
 Conc: 132.59 ng/ml



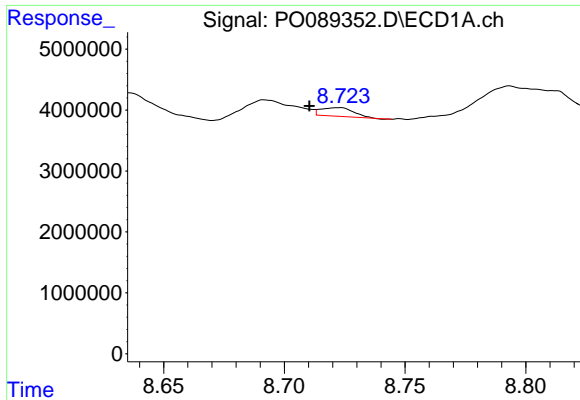
#40 AR-1262-5

R.T.: 9.463 min  
 Delta R.T.: -0.017 min  
 Response: 1083087  
 Conc: 11.42 ng/ml



#40 AR-1262-5

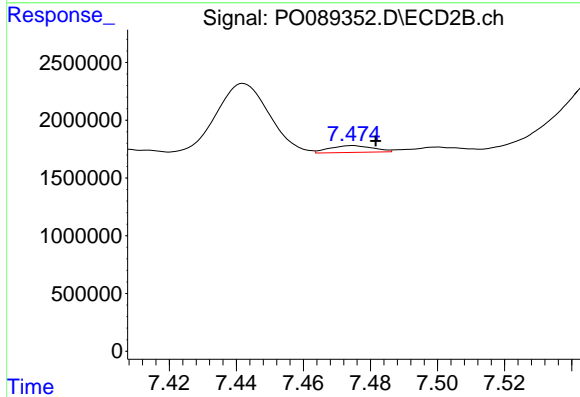
R.T.: 8.034 min  
 Delta R.T.: -0.006 min  
 Response: 12136732  
 Conc: 295.95 ng/ml



#41 AR-1268-1

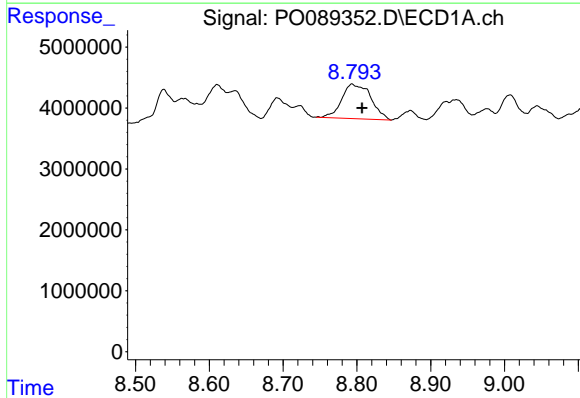
R.T.: 8.722 min  
 Delta R.T.: 0.012 min  
 Response: 1310976  
 Conc: 4.53 ng/ml

Instrument :  
 ECD\_O  
 ClientSampleId :



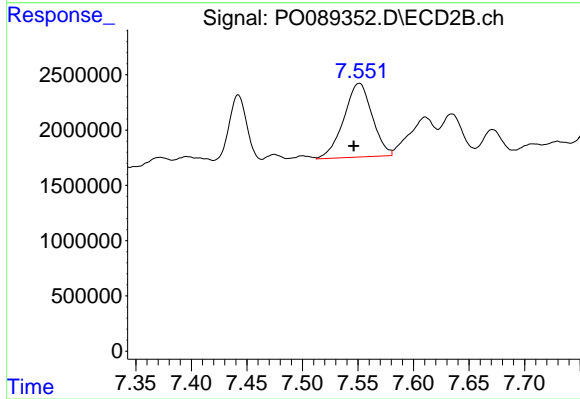
#41 AR-1268-1

R.T.: 7.475 min  
 Delta R.T.: -0.007 min  
 Response: 532215  
 Conc: 3.72 ng/ml



#42 AR-1268-2

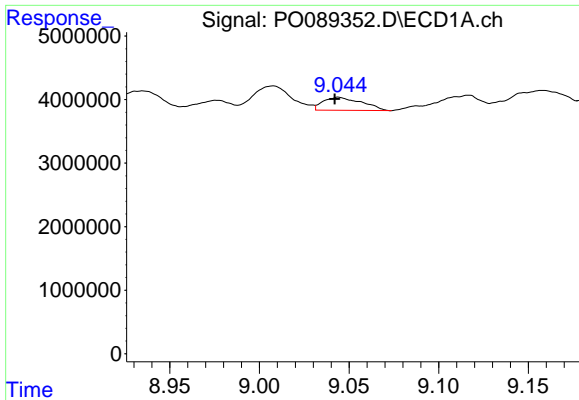
R.T.: 8.793 min  
 Delta R.T.: -0.014 min  
 Response: 15553266  
 Conc: 58.15 ng/ml



#42 AR-1268-2

R.T.: 7.551 min  
 Delta R.T.: 0.005 min  
 Response: 11851949  
 Conc: 92.19 ng/ml

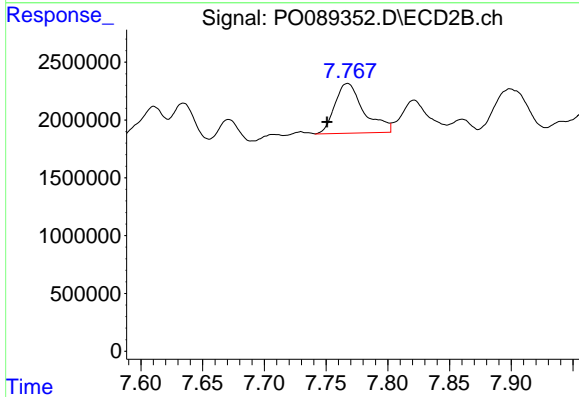




#43 AR-1268-3

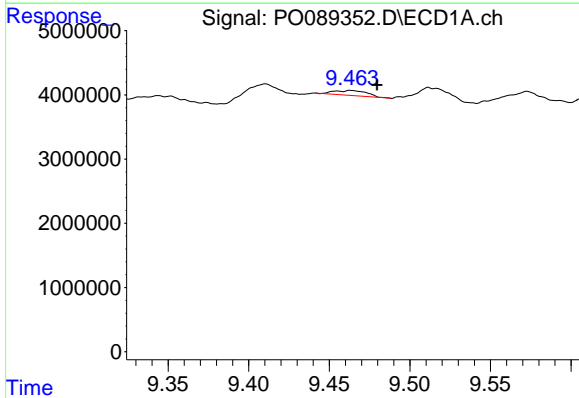
R.T.: 9.044 min  
 Delta R.T.: 0.002 min  
 Response: 3092177  
 Conc: 13.34 ng/ml

Instrument :  
 ECD\_O  
 ClientSampleId :



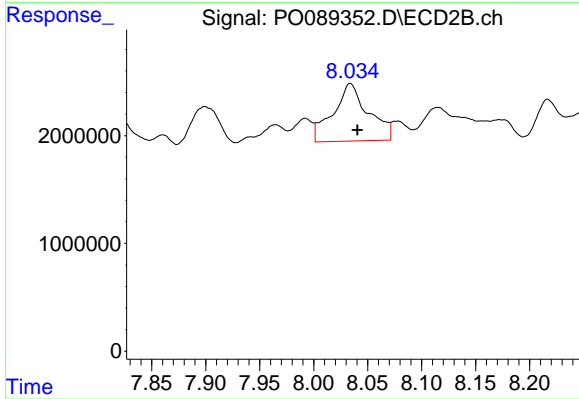
#43 AR-1268-3

R.T.: 7.767 min  
 Delta R.T.: 0.017 min  
 Response: 7057925  
 Conc: 65.53 ng/ml



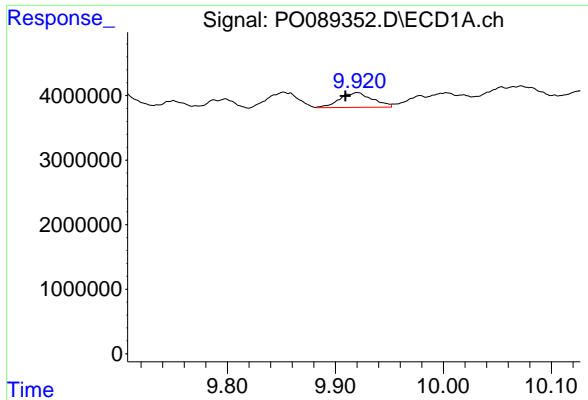
#44 AR-1268-4

R.T.: 9.463 min  
 Delta R.T.: -0.016 min  
 Response: 1083087  
 Conc: 10.96 ng/ml



#44 AR-1268-4

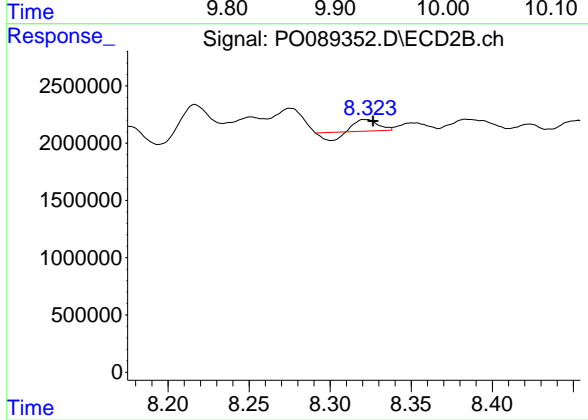
R.T.: 8.034 min  
 Delta R.T.: -0.007 min  
 Response: 12136732  
 Conc: 266.27 ng/ml



#45 AR-1268-5

R.T.: 9.920 min  
 Delta R.T.: 0.011 min  
 Response: 4854743  
 Conc: 6.66 ng/ml

Instrument :  
 ECD\_O  
 ClientSampleId :



#45 AR-1268-5

R.T.: 8.322 min  
 Delta R.T.: -0.005 min  
 Response: 531045  
 Conc: 1.63 ng/ml