

Data Path : Z:\pestpcbsrv\HPCHEM1\ECD_O\Data\P0090623\
 Data File : P0097779.D
 Signal(s) : Signal #1: ECD1A.ch Signal #2: ECD2B.ch
 Acq On : 07 Sep 2023 00:20
 Operator : YP/AJ
 Sample : AR1268ICC050
 Misc :
 ALS Vial : 30 Sample Multiplier: 1

Instrument :
 ECD_O
 ClientSampleId :

Integration File signal 1: autoint1.e
 Integration File signal 2: autoint2.e
 Quant Time: Sep 07 02:33:46 2023
 Quant Method : Z:\pestpcbsrv\HPCHEM1\ECD_O\methods\P0090623.M
 Quant Title : GC EXTRACTABLES
 QLast Update : Thu Sep 07 02:21:29 2023
 Response via : Initial Calibration
 Integrator: ChemStation

Volume Inj. : 2 µl
 Signal #1 Phase : ZB-MR1 Signal #2 Phase: ZB-MR2
 Signal #1 Info : 30Mx0.32mmx 0.50µ Signal #2 Info : 30M x 0.32mm x 0.25µm

Compound	RT#1	RT#2	Resp#1	Resp#2	ng/ml	ng/ml

System Monitoring Compounds						
1) SA Tetrachlo...	4.442	3.622	19319539	4470738	4.731	4.520
2) SA Decachlor...	10.291	8.660	15597939	7128893	4.784	4.756
Target Compounds						
41) L9 AR-1268-1	8.737	7.550	13603557	6332292	47.933	48.100
42) L9 AR-1268-2	8.834	7.614	12010137	5366396	47.021	46.562
43) L9 AR-1268-3	9.070	7.914	10752505	1342923	48.116	48.578
44) L9 AR-1268-4	9.510	8.110	3688272	1576141	45.133	44.745
45) L9 AR-1268-5	9.939	8.403	30592140	14189936	46.119	45.261

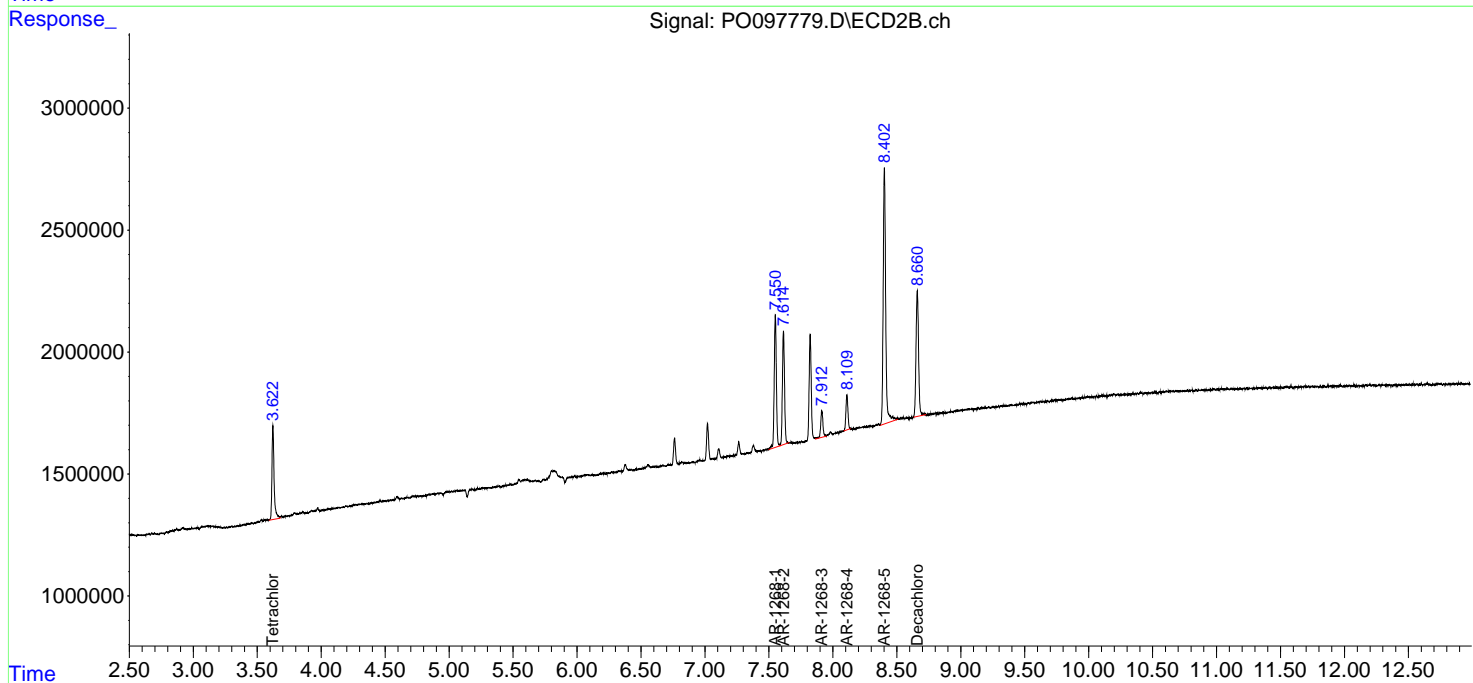
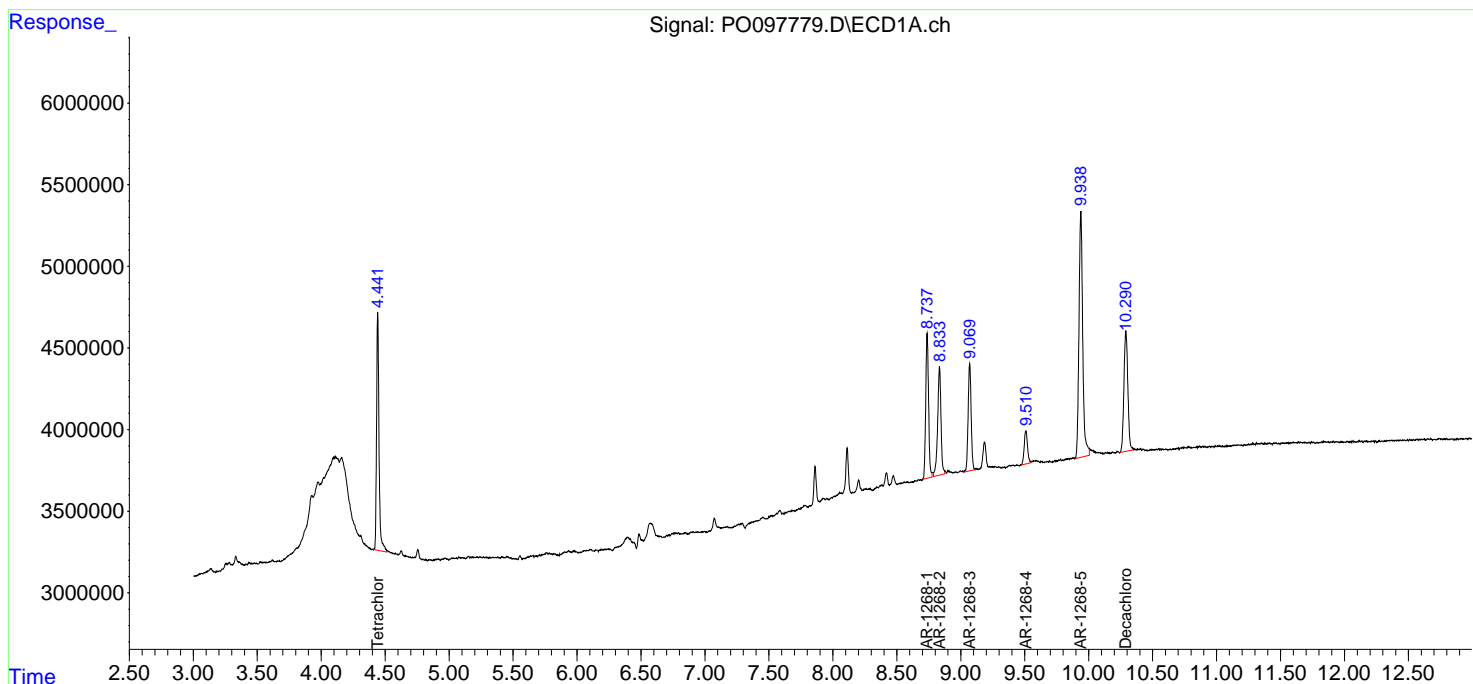
(f)=RT Delta > 1/2 Window (#)=Amounts differ by > 25% (m)=manual int.

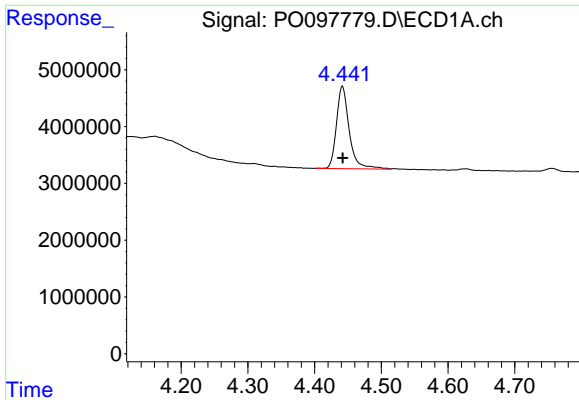
Data Path : Z:\pestpcbsrv\HPCHEM1\ECD_O\Data\PO090623\
 Data File : PO097779.D
 Signal(s) : Signal #1: ECD1A.ch Signal #2: ECD2B.ch
 Acq On : 07 Sep 2023 00:20
 Operator : YP/AJ
 Sample : AR1268ICC050
 Misc :
 ALS Vial : 30 Sample Multiplier: 1

Instrument :
 ECD_O
 ClientSampleId :

Integration File signal 1: autoint1.e
 Integration File signal 2: autoint2.e
 Quant Time: Sep 07 02:33:46 2023
 Quant Method : Z:\pestpcbsrv\HPCHEM1\ECD_O\methods\PO090623.M
 Quant Title : GC EXTRACTABLES
 QLast Update : Thu Sep 07 02:21:29 2023
 Response via : Initial Calibration
 Integrator: ChemStation

Volume Inj. : 2 µl
 Signal #1 Phase : ZB-MR1 Signal #2 Phase: ZB-MR2
 Signal #1 Info : 30Mx0.32mmx 0.50µ Signal #2 Info : 30M x 0.32mm x 0.25µm

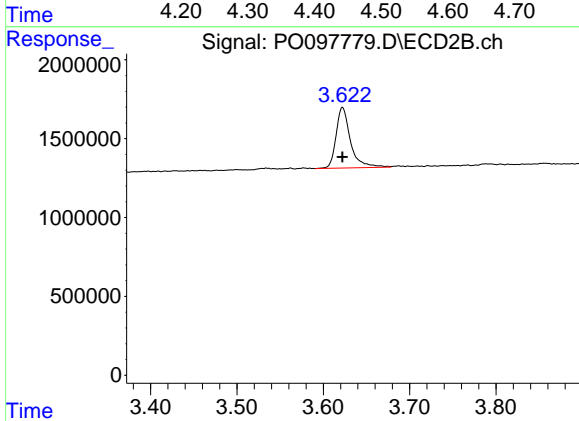




#1 Tetrachloro-m-xylene

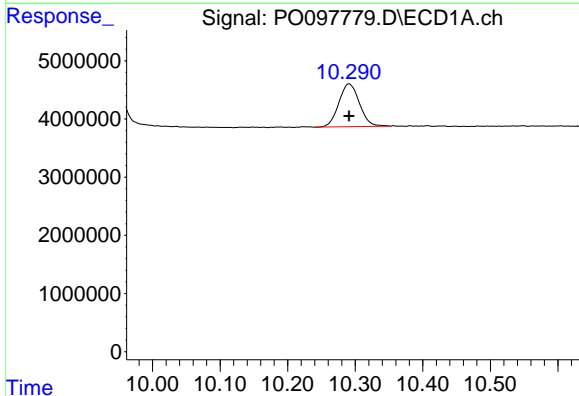
R.T.: 4.442 min
 Delta R.T.: 0.000 min
 Response: 19319539
 Conc: 4.73 ng/ml

Instrument :
 ECD_O
 ClientSampleId :



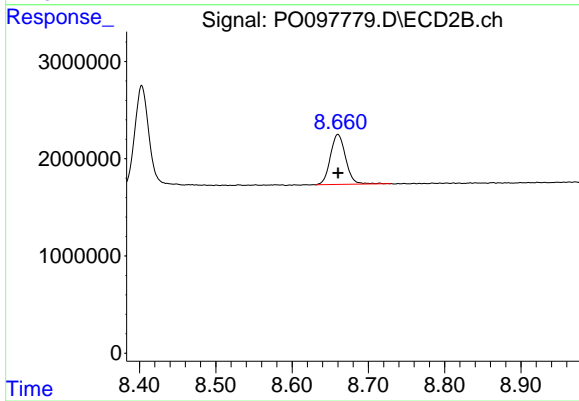
#1 Tetrachloro-m-xylene

R.T.: 3.622 min
 Delta R.T.: 0.000 min
 Response: 4470738
 Conc: 4.52 ng/ml



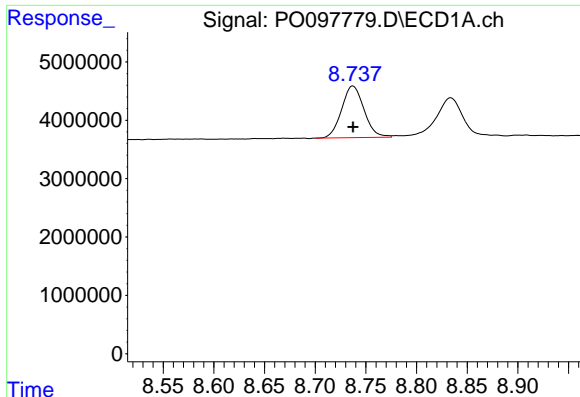
#2 Decachlorobiphenyl

R.T.: 10.291 min
 Delta R.T.: 0.000 min
 Response: 15597939
 Conc: 4.78 ng/ml



#2 Decachlorobiphenyl

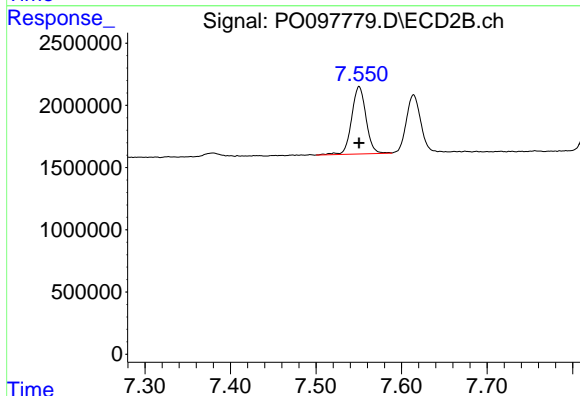
R.T.: 8.660 min
 Delta R.T.: 0.000 min
 Response: 7128893
 Conc: 4.76 ng/ml



#41 AR-1268-1

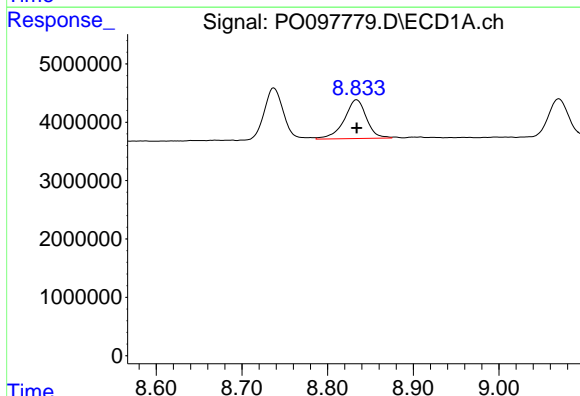
R.T.: 8.737 min
 Delta R.T.: 0.000 min
 Response: 13603557
 Conc: 47.93 ng/ml

Instrument :
 ECD_O
 ClientSampleId :



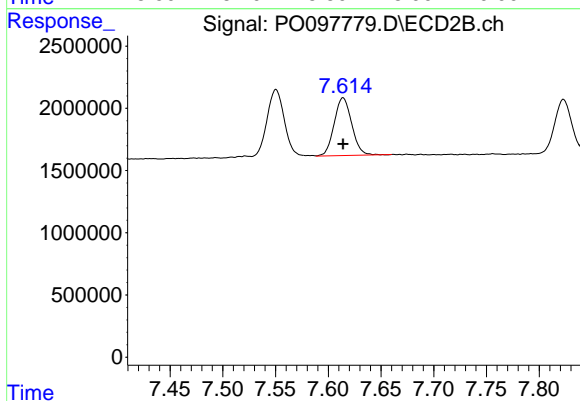
#41 AR-1268-1

R.T.: 7.550 min
 Delta R.T.: 0.000 min
 Response: 6332292
 Conc: 48.10 ng/ml



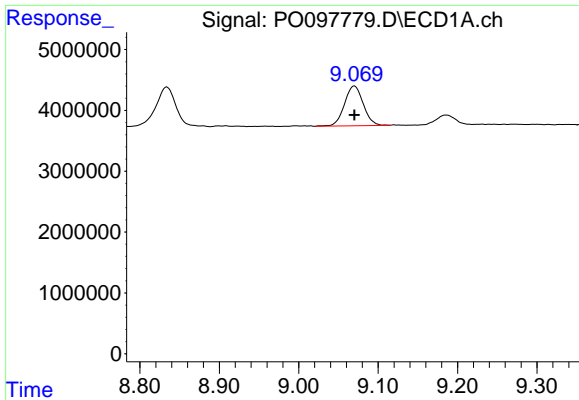
#42 AR-1268-2

R.T.: 8.834 min
 Delta R.T.: 0.000 min
 Response: 12010137
 Conc: 47.02 ng/ml



#42 AR-1268-2

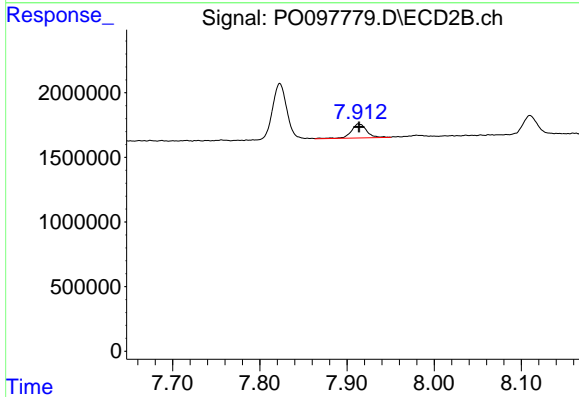
R.T.: 7.614 min
 Delta R.T.: 0.000 min
 Response: 5366396
 Conc: 46.56 ng/ml



#43 AR-1268-3

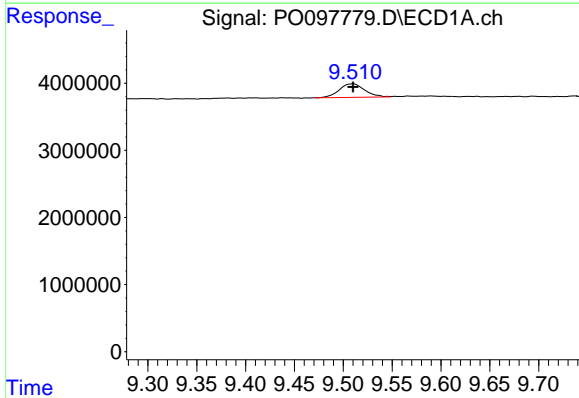
R.T.: 9.070 min
 Delta R.T.: 0.000 min
 Response: 10752505
 Conc: 48.12 ng/ml

Instrument :
 ECD_O
 ClientSampleId :



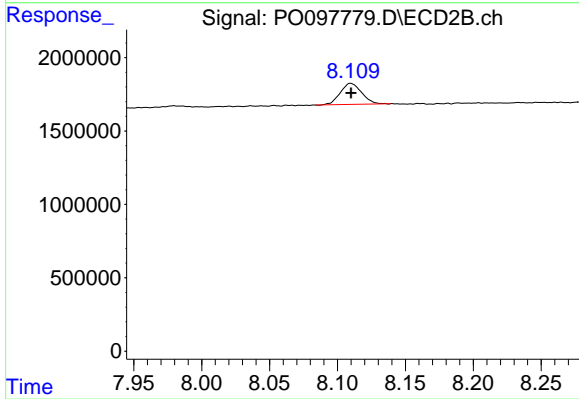
#43 AR-1268-3

R.T.: 7.914 min
 Delta R.T.: 0.000 min
 Response: 1342923
 Conc: 48.58 ng/ml



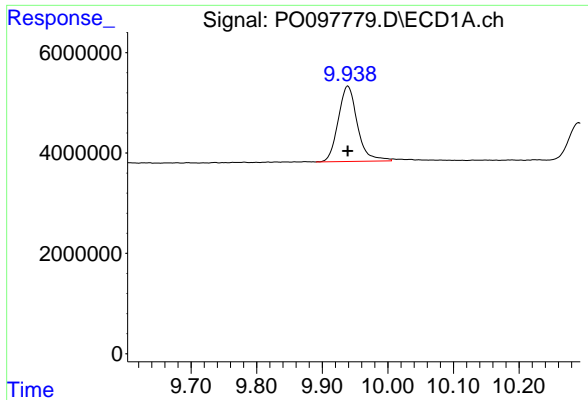
#44 AR-1268-4

R.T.: 9.510 min
 Delta R.T.: 0.000 min
 Response: 3688272
 Conc: 45.13 ng/ml



#44 AR-1268-4

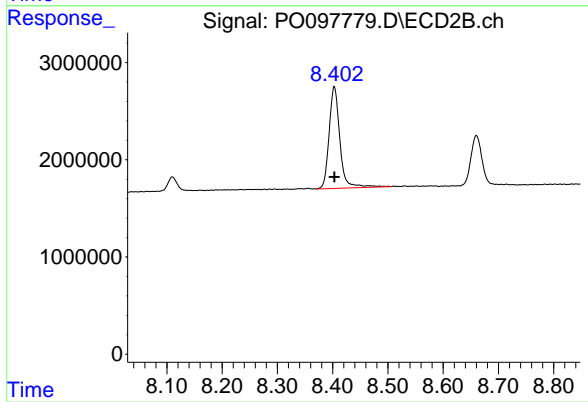
R.T.: 8.110 min
 Delta R.T.: 0.000 min
 Response: 1576141
 Conc: 44.74 ng/ml



#45 AR-1268-5

R.T.: 9.939 min
Delta R.T.: 0.000 min
Response: 30592140
Conc: 46.12 ng/ml

Instrument :
ECD_O
ClientSampleId :



#45 AR-1268-5

R.T.: 8.403 min
Delta R.T.: 0.000 min
Response: 14189936
Conc: 45.26 ng/ml