

Data Path : Z:\pestpcbsrv\HPCHEM1\ECD_0\Data\P0090623\
 Data File : P0097782.D
 Signal(s) : Signal #1: ECD1A.ch Signal #2: ECD2B.ch
 Acq On : 07 Sep 2023 01:11
 Operator : YP/AJ
 Sample : AR1248ICV500
 Misc :
 ALS Vial : 33 Sample Multiplier: 1

Instrument :
 ECD_0
ClientSampleId :
 ICVPO090623AR1248

Integration File signal 1: autoint1.e
 Integration File signal 2: autoint2.e
 Quant Time: Sep 07 01:39:21 2023
 Quant Method : Z:\pestpcbsrv\HPCHEM1\ECD_0\methods\P0090623.M
 Quant Title : GC EXTRACTABLES
 QLast Update : Thu Sep 07 01:37:10 2023
 Response via : Initial Calibration
 Integrator: ChemStation

Volume Inj. : 2 µl
 Signal #1 Phase : ZB-MR1 Signal #2 Phase: ZB-MR2
 Signal #1 Info : 30Mx0.32mmx 0.50µ Signal #2 Info : 30M x 0.32mm x 0.25µm

Compound	RT#1	RT#2	Resp#1	Resp#2	ng/ml	ng/ml

System Monitoring Compounds						
1) SA Tetrachlo...	4.442	3.622	199.7E6	48667413	50.173	50.762
2) SA Decachlor...	10.292	8.660	92906196	41778797	50.240	49.029
Target Compounds						
21) L5 AR-1248-1	5.620	4.712	33378454	10142171	491.919	493.716
22) L5 AR-1248-2	5.896	4.951	53529413	15156004	494.986	497.446
23) L5 AR-1248-3	6.102	4.993	55721201	15813420	496.460	496.542
24) L5 AR-1248-4	6.509	5.165	51955191	18358908	502.570	490.585
25) L5 AR-1248-5	6.548	5.560	53092938	16200201	476.286	486.168

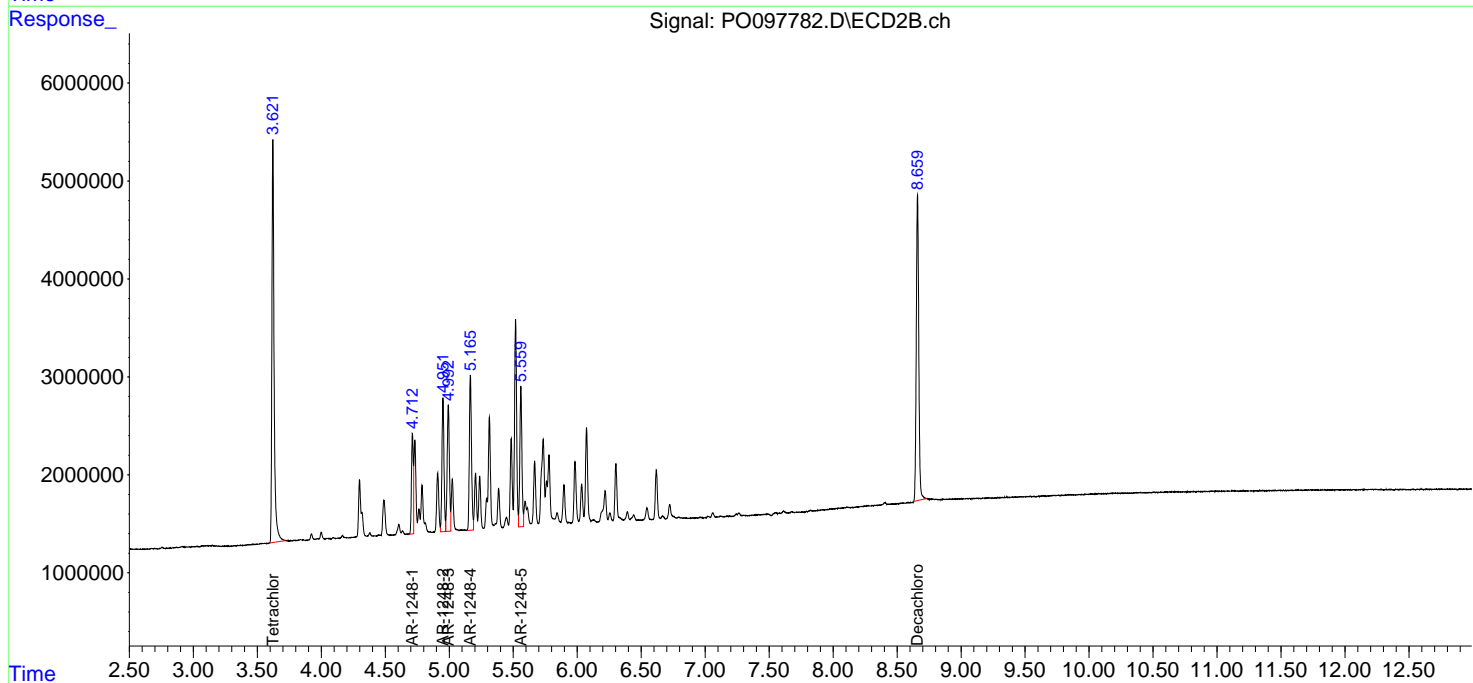
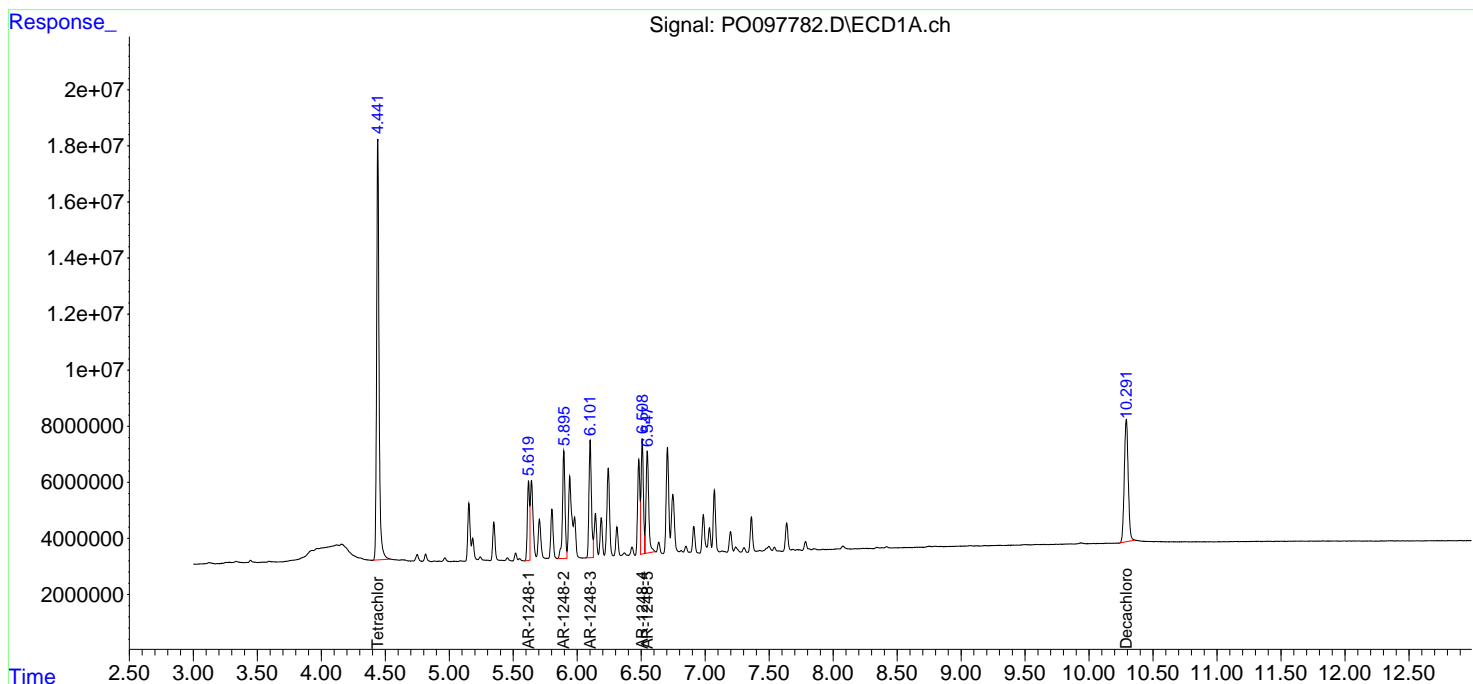
(f)=RT Delta > 1/2 Window (#)=Amounts differ by > 25% (m)=manual int.

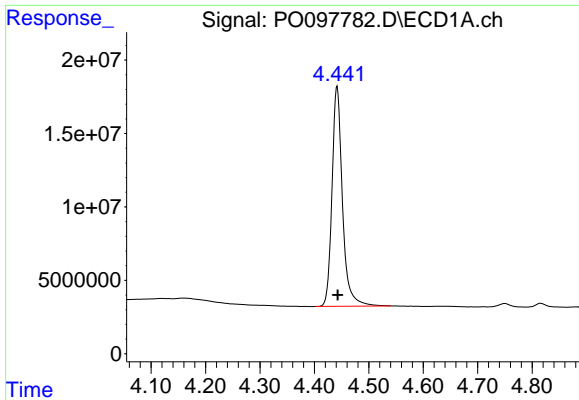
Data Path : Z:\pestpcbsrv\HPCHEM1\ECD_O\Data\P0090623\
 Data File : P0097782.D
 Signal(s) : Signal #1: ECD1A.ch Signal #2: ECD2B.ch
 Acq On : 07 Sep 2023 01:11
 Operator : YP/AJ
 Sample : AR1248ICV500
 Misc :
 ALS Vial : 33 Sample Multiplier: 1

Instrument :
 ECD_O
 ClientSampleId :
 ICVPO090623AR1248

Integration File signal 1: autoint1.e
 Integration File signal 2: autoint2.e
 Quant Time: Sep 07 01:39:21 2023
 Quant Method : Z:\pestpcbsrv\HPCHEM1\ECD_O\methods\P0090623.M
 Quant Title : GC EXTRACTABLES
 QLast Update : Thu Sep 07 01:37:10 2023
 Response via : Initial Calibration
 Integrator: ChemStation

Volume Inj. : 2 µl
 Signal #1 Phase : ZB-MR1 Signal #2 Phase: ZB-MR2
 Signal #1 Info : 30Mx0.32mmx 0.50µ Signal #2 Info : 30M x 0.32mm x 0.25µm

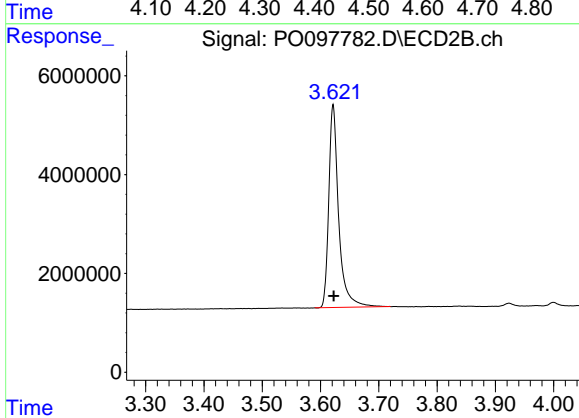




#1 Tetrachloro-m-xylene

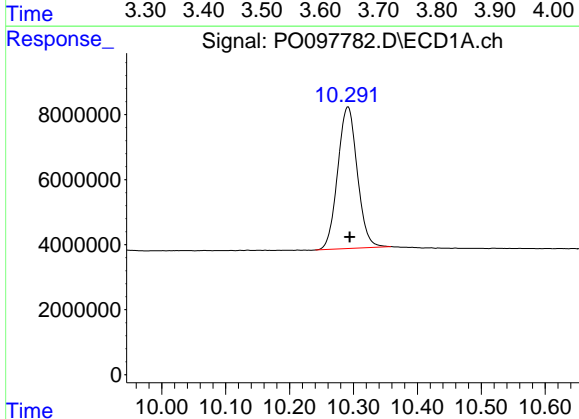
R.T.: 4.442 min
 Delta R.T.: -0.001 min
 Response: 199746040
 Conc: 50.17 ng/ml

Instrument :
 ECD_O
 ClientSampleId :
 ICVPO090623AR1248



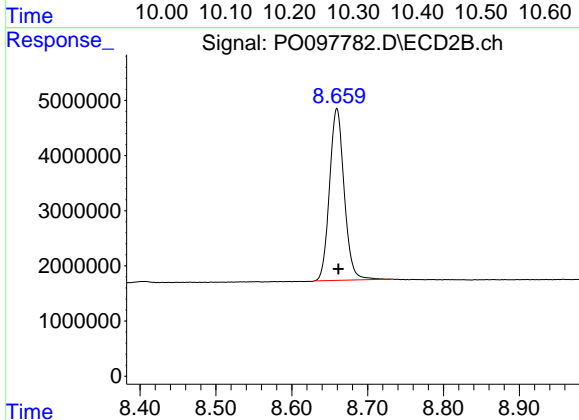
#1 Tetrachloro-m-xylene

R.T.: 3.622 min
 Delta R.T.: -0.001 min
 Response: 48667413
 Conc: 50.76 ng/ml



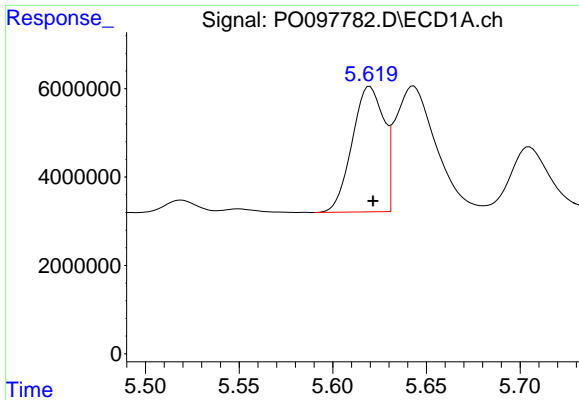
#2 Decachlorobiphenyl

R.T.: 10.292 min
 Delta R.T.: -0.003 min
 Response: 92906196
 Conc: 50.24 ng/ml



#2 Decachlorobiphenyl

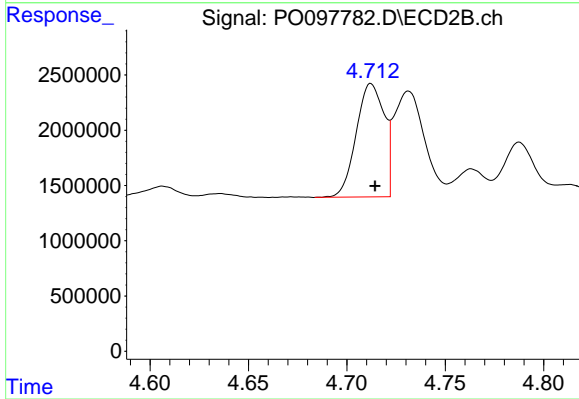
R.T.: 8.660 min
 Delta R.T.: -0.002 min
 Response: 41778797
 Conc: 49.03 ng/ml



#21 AR-1248-1

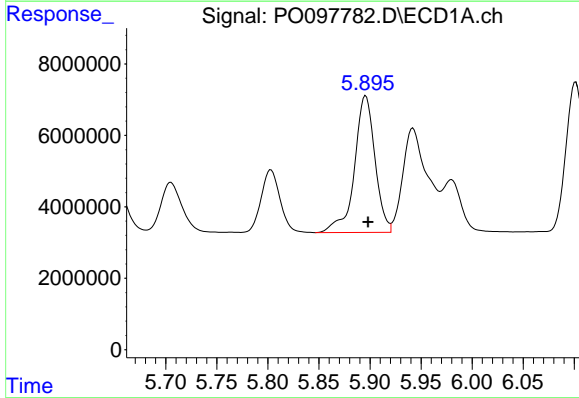
R.T.: 5.620 min
 Delta R.T.: -0.002 min
 Response: 33378454
 Conc: 491.92 ng/ml

Instrument :
 ECD_O
 ClientSampleId :
 ICVPO090623AR1248



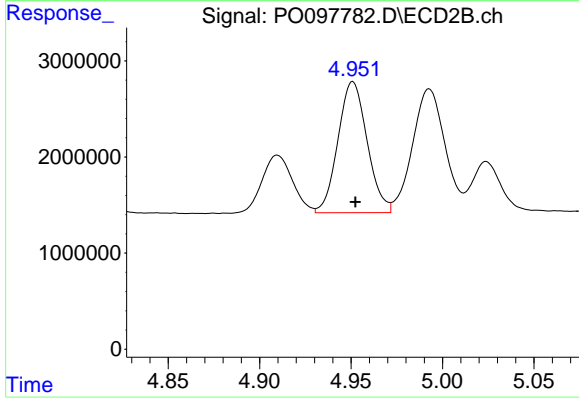
#21 AR-1248-1

R.T.: 4.712 min
 Delta R.T.: -0.002 min
 Response: 10142171
 Conc: 493.72 ng/ml



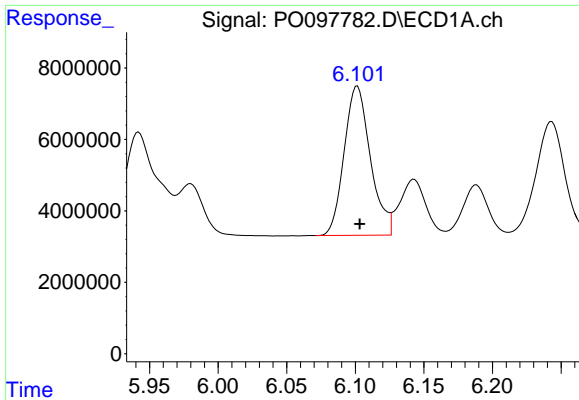
#22 AR-1248-2

R.T.: 5.896 min
 Delta R.T.: -0.002 min
 Response: 53529413
 Conc: 494.99 ng/ml



#22 AR-1248-2

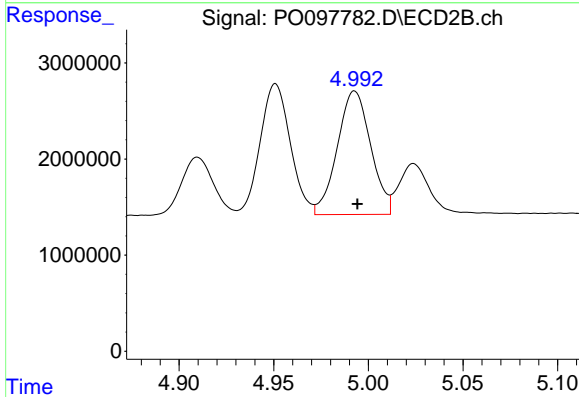
R.T.: 4.951 min
 Delta R.T.: -0.001 min
 Response: 15156004
 Conc: 497.45 ng/ml



#23 AR-1248-3

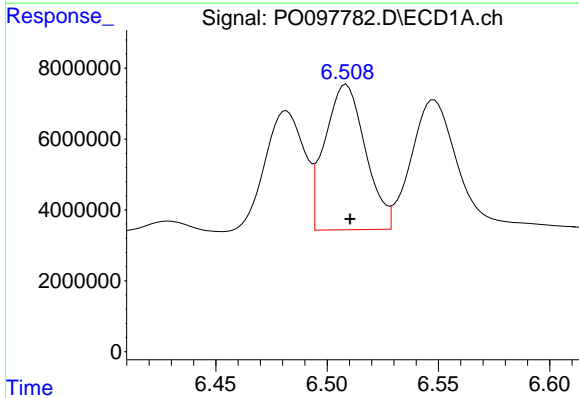
R.T.: 6.102 min
 Delta R.T.: -0.002 min
 Response: 55721201
 Conc: 496.46 ng/ml

Instrument :
 ECD_O
 ClientSampleId :
 ICVPO090623AR1248



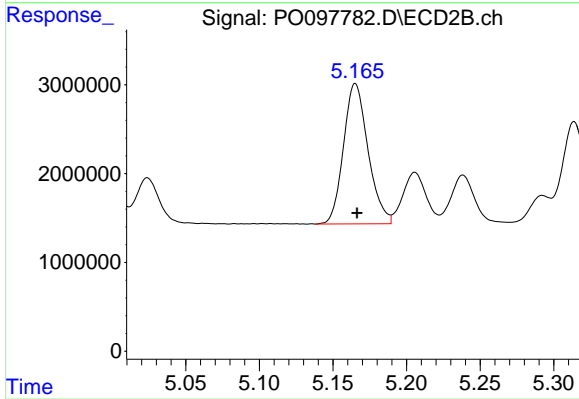
#23 AR-1248-3

R.T.: 4.993 min
 Delta R.T.: -0.002 min
 Response: 15813420
 Conc: 496.54 ng/ml



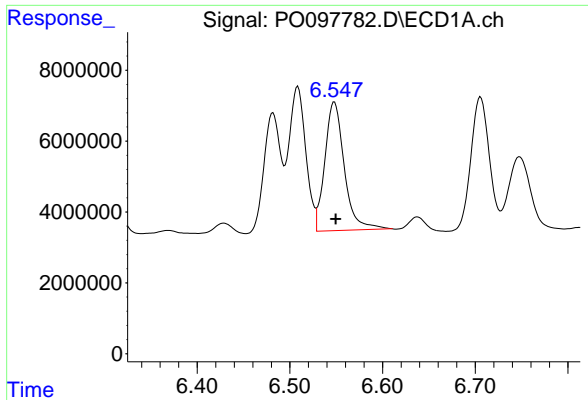
#24 AR-1248-4

R.T.: 6.509 min
 Delta R.T.: -0.002 min
 Response: 51955191
 Conc: 502.57 ng/ml



#24 AR-1248-4

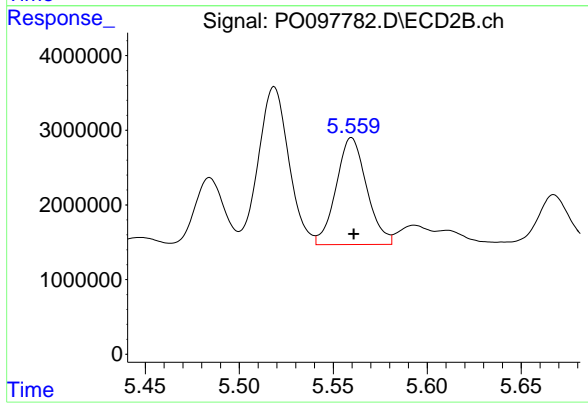
R.T.: 5.165 min
 Delta R.T.: -0.001 min
 Response: 18358908
 Conc: 490.58 ng/ml



#25 AR-1248-5

R.T.: 6.548 min
 Delta R.T.: -0.001 min
 Response: 53092938
 Conc: 476.29 ng/ml

Instrument :
 ECD_O
 ClientSampleId :
 ICVPO090623AR1248



#25 AR-1248-5

R.T.: 5.560 min
 Delta R.T.: -0.001 min
 Response: 16200201
 Conc: 486.17 ng/ml