

Data Path : Z:\pestpcbsrv\HPCHEM1\ECD_0\Data\P0090624\
 Data File : P0106271.D
 Signal(s) : Signal #1: ECD1A.ch Signal #2: ECD2B.ch
 Acq On : 06 Sep 2024 22:10
 Operator : YP/AJ
 Sample : P3849-01
 Misc :
 ALS Vial : 21 Sample Multiplier: 1

Instrument :
 ECD_0
 ClientSampleId :
 MP-1

Integration File signal 1: autoint1.e
 Integration File signal 2: autoint2.e
 Quant Time: Sep 07 07:24:56 2024
 Quant Method : Z:\pestpcbsrv\HPCHEM1\ECD_0\methods\P0082624.M
 Quant Title : GC EXTRACTABLES
 QLast Update : Tue Aug 27 06:50:58 2024
 Response via : Initial Calibration
 Integrator: ChemStation

Volume Inj. : 2 µl
 Signal #1 Phase : ZB-MR1 Signal #2 Phase: ZB-MR2
 Signal #1 Info : 30Mx0.32mmx 0.50µ Signal #2 Info : 30M x 0.32mm x 0.25µm

Compound	RT#1	RT#2	Resp#1	Resp#2	ng/ml	ng/ml
System Monitoring Compounds						
1) SA Tetrachlo...	4.453	3.718	186.6E6	66559370	20.454	24.636
2) SA Decachlor...	10.192	8.746	118.2E6	47526482	21.776	21.771
Target Compounds						
3) L1 AR-1016-1	5.616	4.807	6683997	2057049	21.148	21.517
4) L1 AR-1016-2	5.639	4.826	10497707	3207159	23.881	25.272
5) L1 AR-1016-3	5.701	5.003	5843269	1887052	21.734	26.975
6) L1 AR-1016-4	5.799	5.043	3991769	1428978	18.133	26.573 #
7) L1 AR-1016-5	6.093	5.258	5427280	2777695	25.510	40.367 #
8) L2 AR-1221-1	4.659	3.933	2433687	192093	22.108	6.295 #
9) L2 AR-1221-2	4.757	4.020	3872346	1276874	46.067	55.868
10) L2 AR-1221-3	4.820	4.095	3987990	2813926	16.476	39.427 #
11) L3 AR-1232-1	4.820	4.095	3987990	2813926	19.670	47.901 #
12) L3 AR-1232-2	5.351	4.826	10112396	3207159	93.078	56.792 #
13) L3 AR-1232-3	5.639	5.003	10497707	1887052	53.220	61.074
14) L3 AR-1232-4	5.799	5.086	3991769	1640567	40.543	60.719 #
15) L3 AR-1232-5	5.889	5.258	3201193	2777695	42.049	93.946 #
16) L4 AR-1242-1	5.616	4.826	6683997	3207159	27.628	45.094 #
17) L4 AR-1242-2	5.639	4.857	10497707	393992	31.608	4.205 #
18) L4 AR-1242-3	5.701	5.043	5843269	1428978	28.445	28.022
19) L4 AR-1242-4	5.799	5.118	3991769	650141	23.793	12.681 #
20) L4 AR-1242-5	6.532	5.652	3773424	2854580	22.149	44.166 #
21) L5 AR-1248-1	5.616	4.807	6683997	2057049	35.554	36.727
22) L5 AR-1248-2	5.889	5.043	3201193	1428978	12.389	19.196 #
23) L5 AR-1248-3	6.093	5.086	5427280	1640567	19.002	20.887
24) L5 AR-1248-4	6.495	5.258	4056866	2777695	12.867	29.832 #
25) L5 AR-1248-5	6.532	5.652	3773424	2854580	12.431	31.151 #
26) L6 AR-1254-1	6.468	5.611	3830189	3387148	12.407	25.104 #
27) L6 AR-1254-2	6.691	5.758	5097212	2204361	11.063	18.162 #
28) L6 AR-1254-3	7.052	6.163	4395452	1831016	9.304	9.499
29) L6 AR-1254-4	7.337	6.391	2254436	963713	6.472	7.947
30) L6 AR-1254-5	7.755	6.809	1998200	1107822	5.472	6.266
31) L7 AR-1260-1	7.214	6.295	1883279	472999	5.248	3.590 #
32) L7 AR-1260-2	7.474	6.478	2231176	1638213	5.311	9.982 #
33) L7 AR-1260-3	7.833	6.635	947657	2490423	3.543	14.757 #
34) L7 AR-1260-4	8.087	7.107	413042	511406	1.332	4.615 #
35) L7 AR-1260-5	8.374	7.346	3041611	1043580	5.467	3.846 #
36) L8 AR-1262-1	7.755	6.809	1998200	1107822	6.880	11.492 #
37) L8 AR-1262-2	8.374	7.107	3041611	511406	4.230	3.292
38) L8 AR-1262-3	8.699	7.631	1029225	139439	2.136	1.225 #
39) L8 AR-1262-4	8.768	7.692	1380844	496191	3.850	2.082 #
40) L8 AR-1262-5	9.495f	8.191	1583626	99648	6.159	0.909 #
41) L9 AR-1268-1	8.699	7.631	1029225	139439	1.258	0.406 #

Data Path : Z:\pestpcbsrv\HPCHEM1\ECD_0\Data\P0090624\
 Data File : P0106271.D
 Signal(s) : Signal #1: ECD1A.ch Signal #2: ECD2B.ch
 Acq On : 06 Sep 2024 22:10
 Operator : YP/AJ
 Sample : P3849-01
 Misc :
 ALS Vial : 21 Sample Multiplier: 1

Instrument :
 ECD_0
 ClientSampleId :
 MP-1

Integration File signal 1: autoint1.e
 Integration File signal 2: autoint2.e
 Quant Time: Sep 07 07:24:56 2024
 Quant Method : Z:\pestpcbsrv\HPCHEM1\ECD_0\methods\P0082624.M
 Quant Title : GC EXTRACTABLES
 QLast Update : Tue Aug 27 06:50:58 2024
 Response via : Initial Calibration
 Integrator: ChemStation

Volume Inj. : 2 µl
 Signal #1 Phase : ZB-MR1 Signal #2 Phase: ZB-MR2
 Signal #1 Info : 30Mx0.32mmx 0.50µ Signal #2 Info : 30M x 0.32mm x 0.25µm

	Compound	RT#1	RT#2	Resp#1	Resp#2	ng/ml	ng/ml
42)	L9 AR-1268-2	8.768	7.692	1380844	496191	1.885	1.541
43)	L9 AR-1268-3	9.010	7.899	290175	234823	0.472	0.874 #
44)	L9 AR-1268-4	9.495f	8.191	1583626	99648	5.855	0.880 #
45)	L9 AR-1268-5	9.848	8.484	1078736	316043	0.535	0.369 #

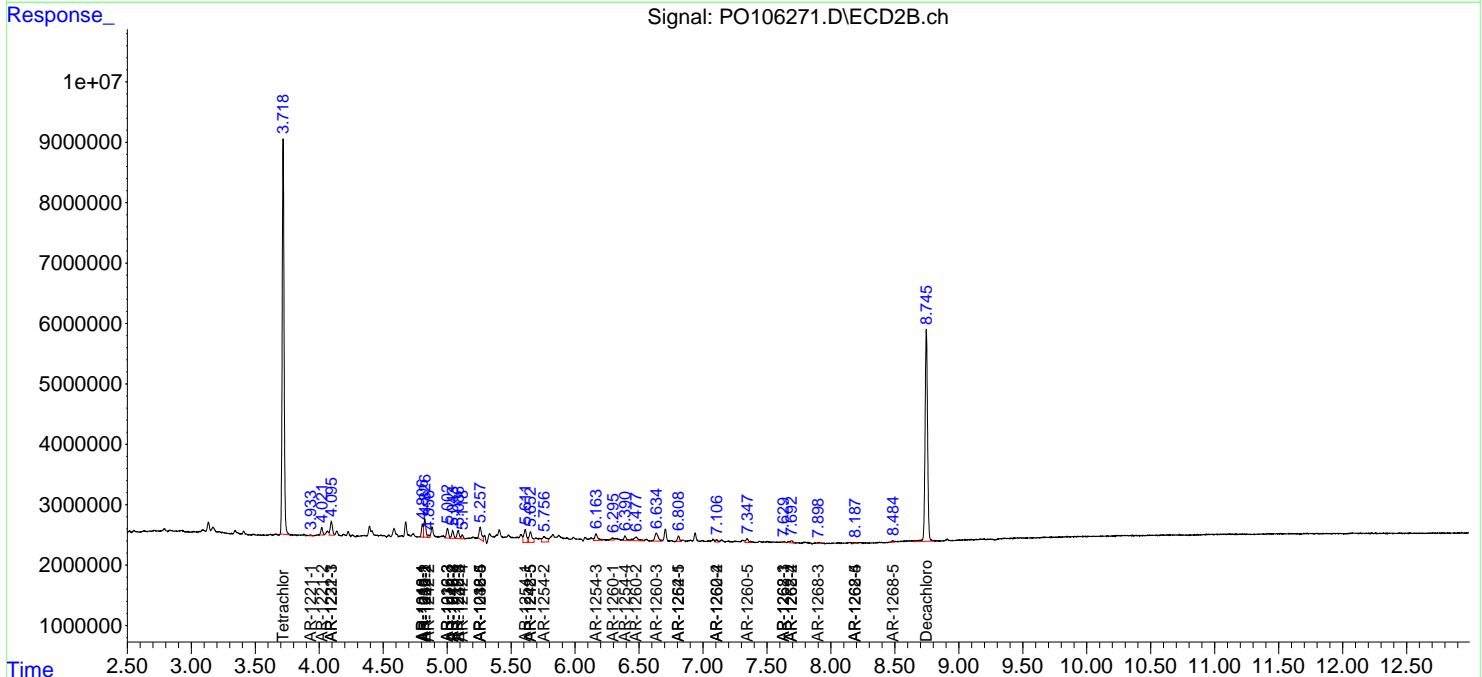
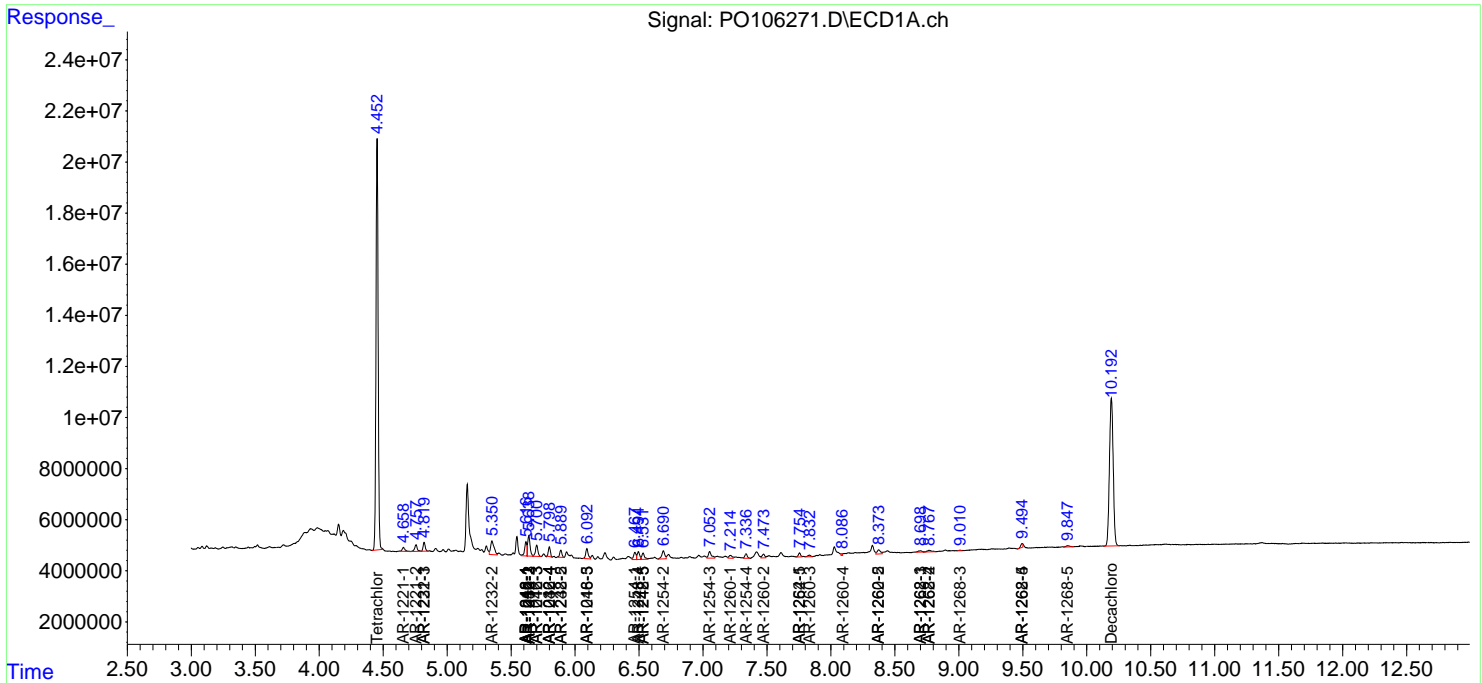
(f)=RT Delta > 1/2 Window (#)=Amounts differ by > 25% (m)=manual int.

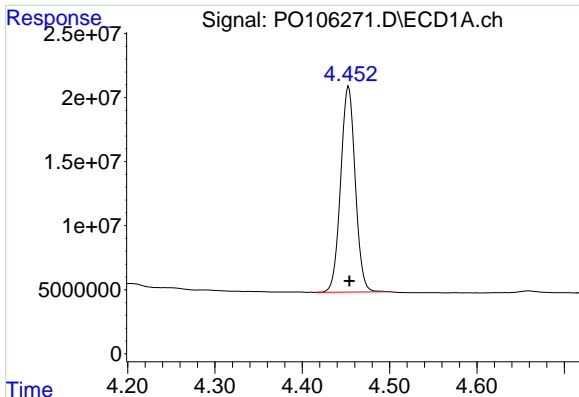
Data Path : Z:\pestpcbsrv\HPCHEM1\ECD_O\Data\PO090624\
 Data File : PO106271.D
 Signal(s) : Signal #1: ECD1A.ch Signal #2: ECD2B.ch
 Acq On : 06 Sep 2024 22:10
 Operator : YP/AJ
 Sample : P3849-01
 Misc :
 ALS Vial : 21 Sample Multiplier: 1

Instrument :
 ECD_O
 ClientSampleId :
 MP-1

Integration File signal 1: autoint1.e
 Integration File signal 2: autoint2.e
 Quant Time: Sep 07 07:24:56 2024
 Quant Method : Z:\pestpcbsrv\HPCHEM1\ECD_O\methods\PO082624.M
 Quant Title : GC EXTRACTABLES
 QLast Update : Tue Aug 27 06:50:58 2024
 Response via : Initial Calibration
 Integrator: ChemStation

Volume Inj. : 2 µl
 Signal #1 Phase : ZB-MR1 Signal #2 Phase: ZB-MR2
 Signal #1 Info : 30Mx0.32mmx 0.50µ Signal #2 Info : 30M x 0.32mm x 0.25µm

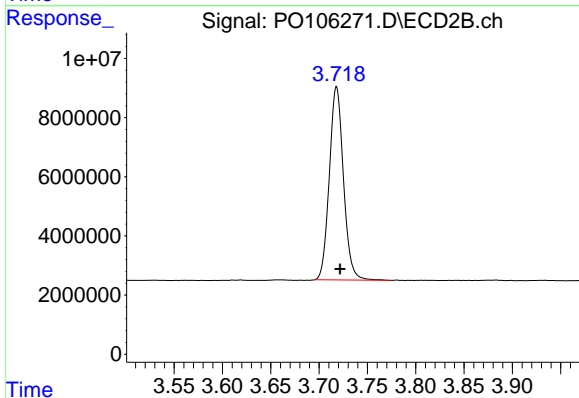




#1 Tetrachloro-m-xylene

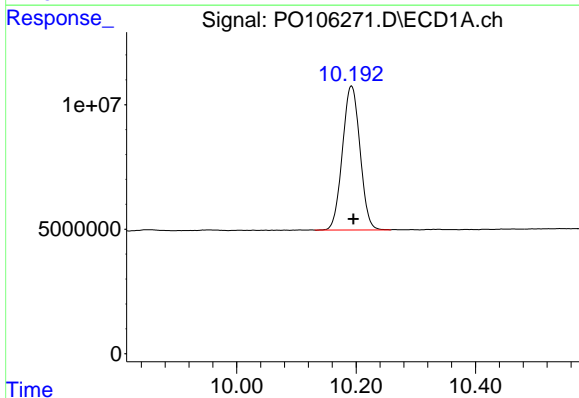
R.T.: 4.453 min
 Delta R.T.: 0.000 min
 Response: 186607704
 Conc: 20.45 ng/ml

Instrument :
 ECD_O
 ClientSampleId :
 MP-1



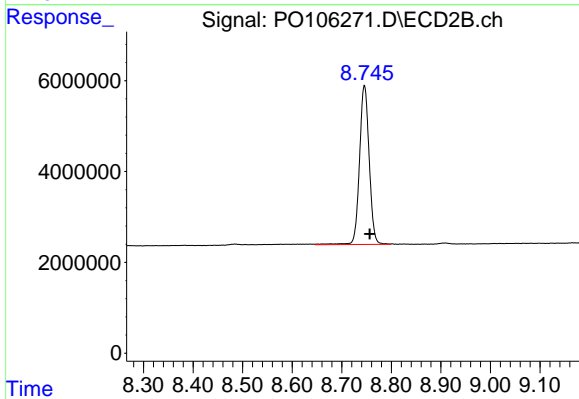
#1 Tetrachloro-m-xylene

R.T.: 3.718 min
 Delta R.T.: -0.004 min
 Response: 66559370
 Conc: 24.64 ng/ml



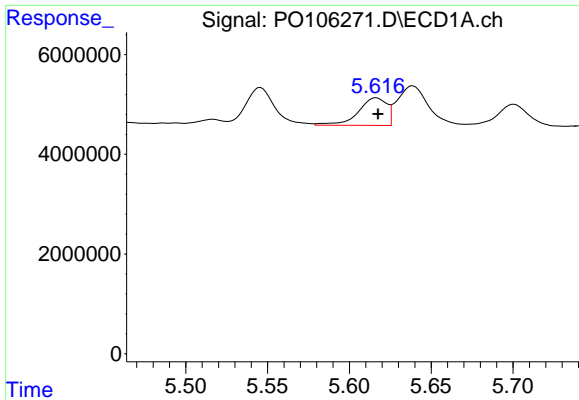
#2 Decachlorobiphenyl

R.T.: 10.192 min
 Delta R.T.: -0.003 min
 Response: 118179194
 Conc: 21.78 ng/ml



#2 Decachlorobiphenyl

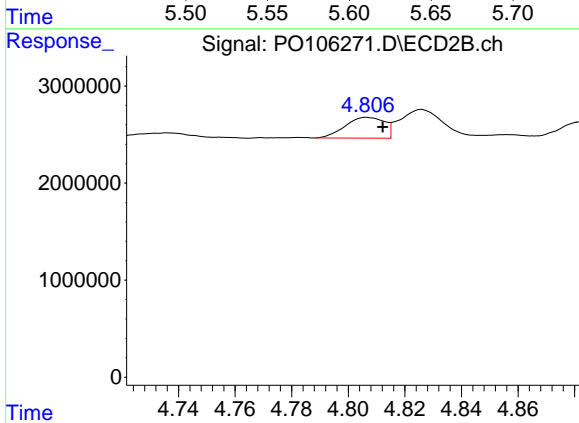
R.T.: 8.746 min
 Delta R.T.: -0.011 min
 Response: 47526482
 Conc: 21.77 ng/ml



#3 AR-1016-1

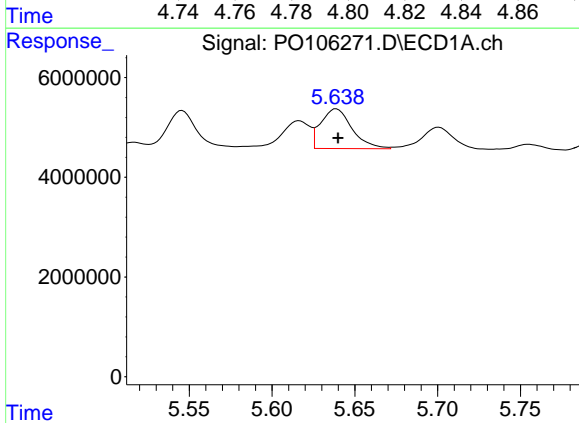
R.T.: 5.616 min
 Delta R.T.: -0.001 min
 Response: 6683997
 Conc: 21.15 ng/ml

Instrument :
 ECD_O
 ClientSampleId :
 MP-1



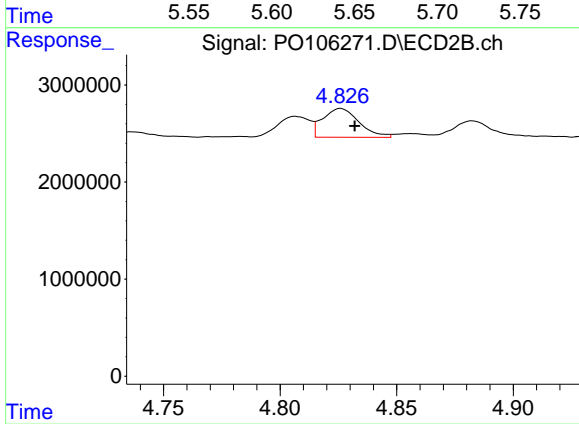
#3 AR-1016-1

R.T.: 4.807 min
 Delta R.T.: -0.005 min
 Response: 2057049
 Conc: 21.52 ng/ml



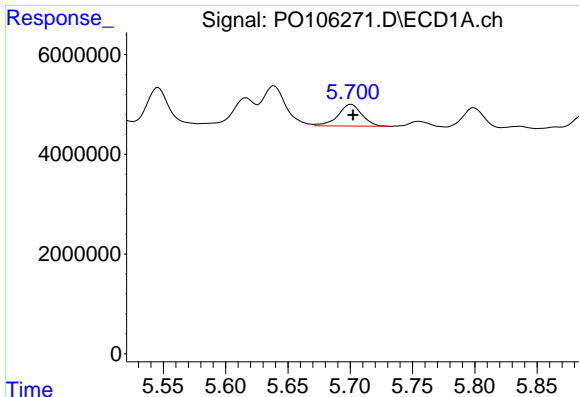
#4 AR-1016-2

R.T.: 5.639 min
 Delta R.T.: -0.001 min
 Response: 10497707
 Conc: 23.88 ng/ml



#4 AR-1016-2

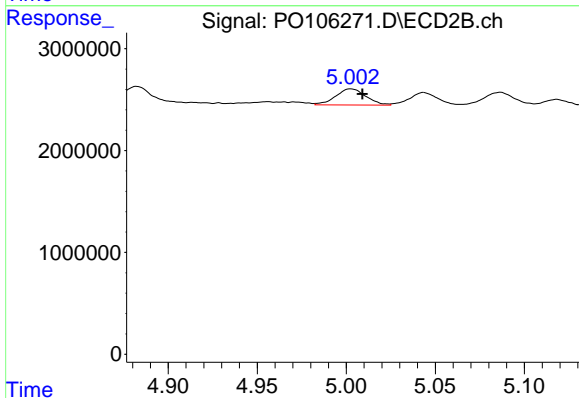
R.T.: 4.826 min
 Delta R.T.: -0.006 min
 Response: 3207159
 Conc: 25.27 ng/ml



#5 AR-1016-3

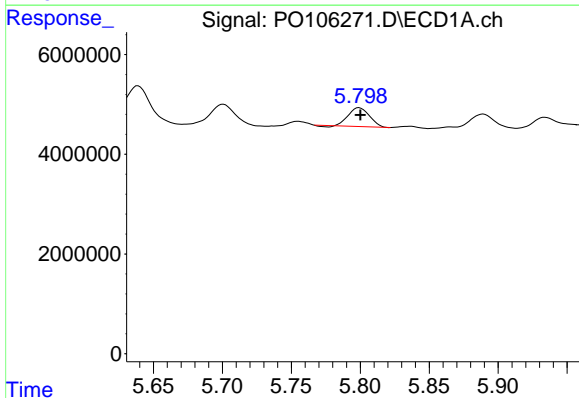
R.T.: 5.701 min
 Delta R.T.: -0.002 min
 Response: 5843269
 Conc: 21.73 ng/ml

Instrument :
 ECD_O
 ClientSampleId :
 MP-1



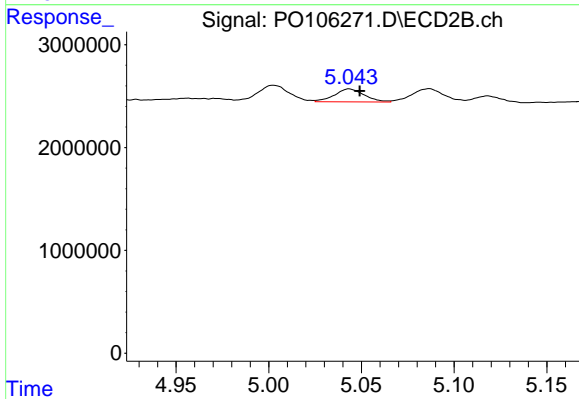
#5 AR-1016-3

R.T.: 5.003 min
 Delta R.T.: -0.006 min
 Response: 1887052
 Conc: 26.98 ng/ml



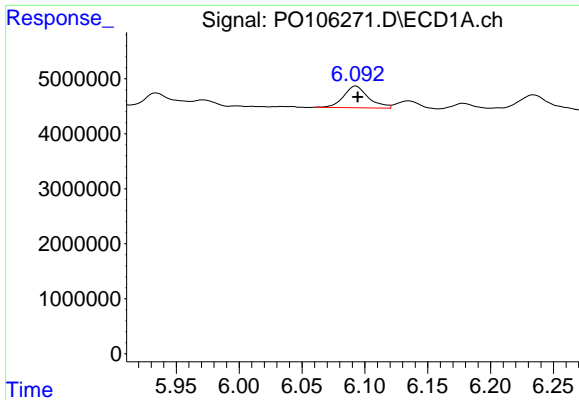
#6 AR-1016-4

R.T.: 5.799 min
 Delta R.T.: -0.001 min
 Response: 3991769
 Conc: 18.13 ng/ml



#6 AR-1016-4

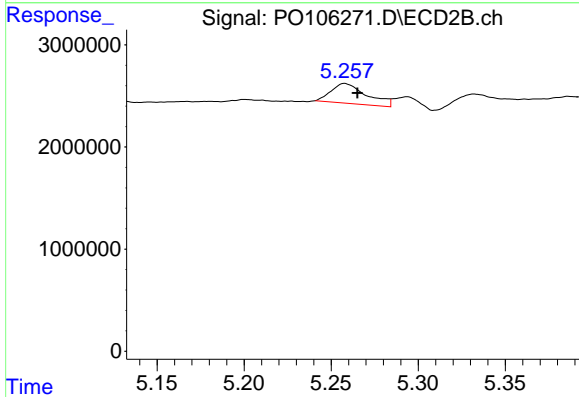
R.T.: 5.043 min
 Delta R.T.: -0.006 min
 Response: 1428978
 Conc: 26.57 ng/ml



#7 AR-1016-5

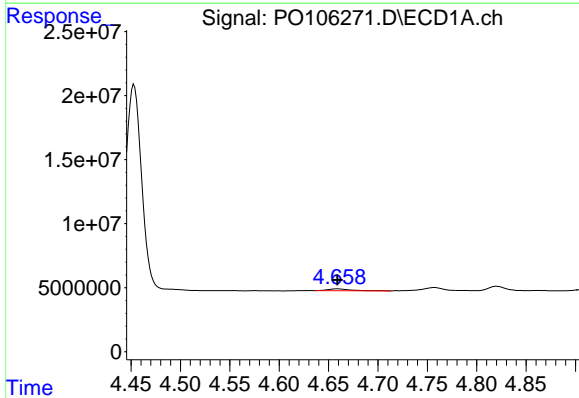
R.T.: 6.093 min
 Delta R.T.: -0.001 min
 Response: 5427280
 Conc: 25.51 ng/ml

Instrument :
 ECD_O
 ClientSampleId :
 MP-1



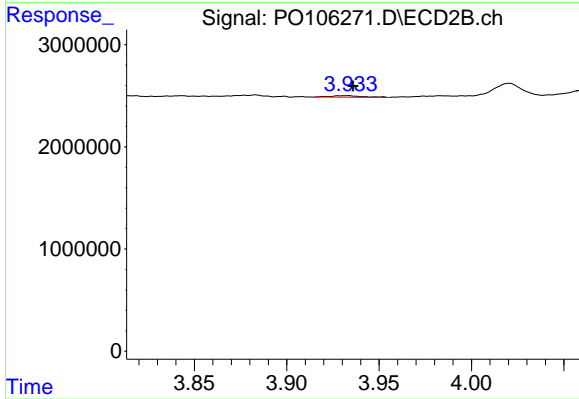
#7 AR-1016-5

R.T.: 5.258 min
 Delta R.T.: -0.007 min
 Response: 2777695
 Conc: 40.37 ng/ml



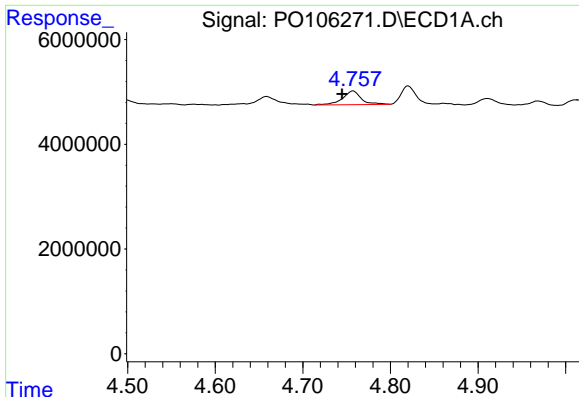
#8 AR-1221-1

R.T.: 4.659 min
 Delta R.T.: 0.000 min
 Response: 2433687
 Conc: 22.11 ng/ml



#8 AR-1221-1

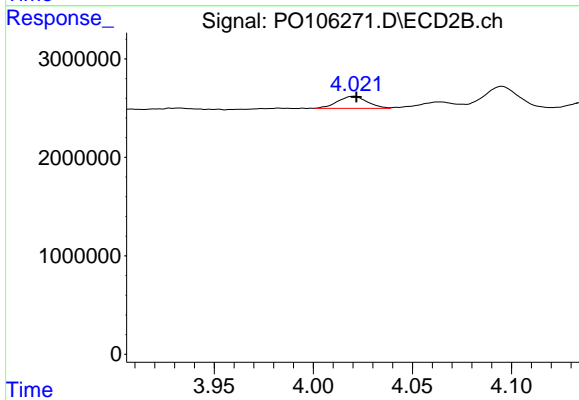
R.T.: 3.933 min
 Delta R.T.: -0.003 min
 Response: 192093
 Conc: 6.30 ng/ml



#9 AR-1221-2

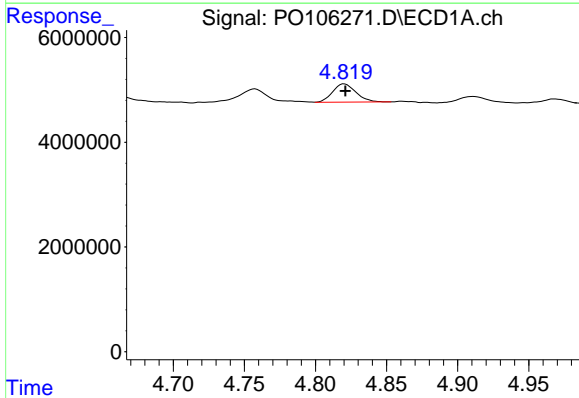
R.T.: 4.757 min
 Delta R.T.: 0.012 min
 Response: 3872346
 Conc: 46.07 ng/ml

Instrument :
 ECD_O
 ClientSampleId :
 MP-1



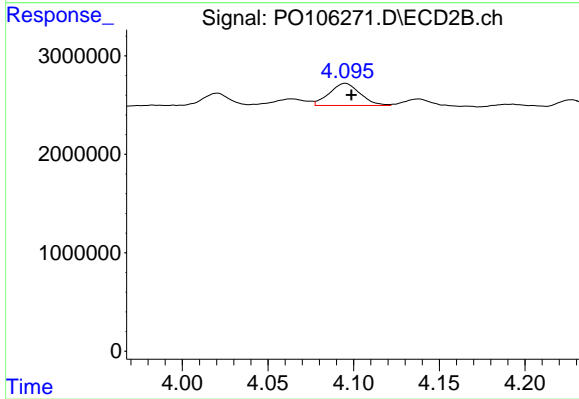
#9 AR-1221-2

R.T.: 4.020 min
 Delta R.T.: -0.001 min
 Response: 1276874
 Conc: 55.87 ng/ml



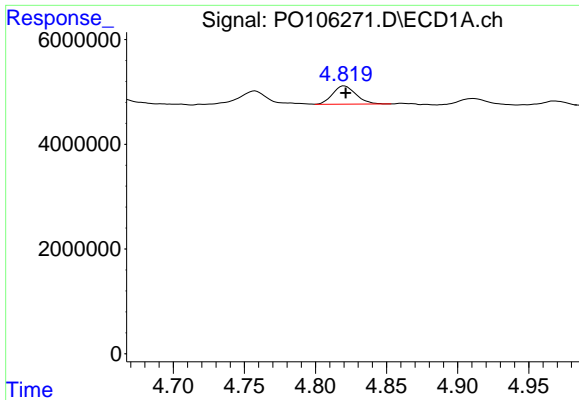
#10 AR-1221-3

R.T.: 4.820 min
 Delta R.T.: 0.000 min
 Response: 3987990
 Conc: 16.48 ng/ml



#10 AR-1221-3

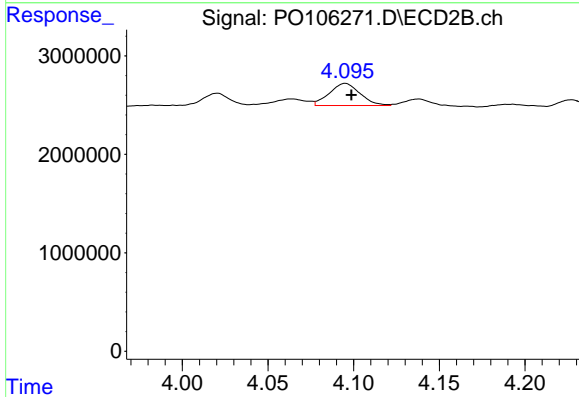
R.T.: 4.095 min
 Delta R.T.: -0.004 min
 Response: 2813926
 Conc: 39.43 ng/ml



#11 AR-1232-1

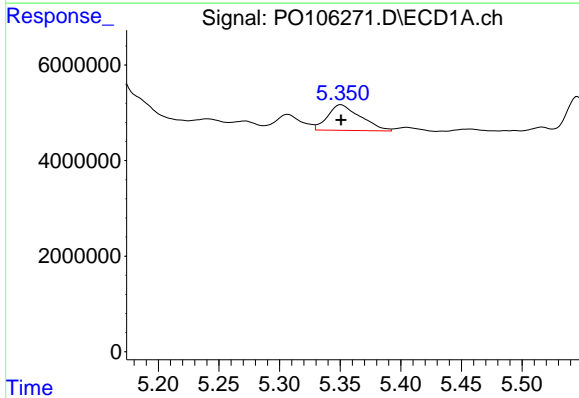
R.T.: 4.820 min
 Delta R.T.: -0.001 min
 Response: 3987990
 Conc: 19.67 ng/ml

Instrument :
 ECD_O
 ClientSampleId :
 MP-1



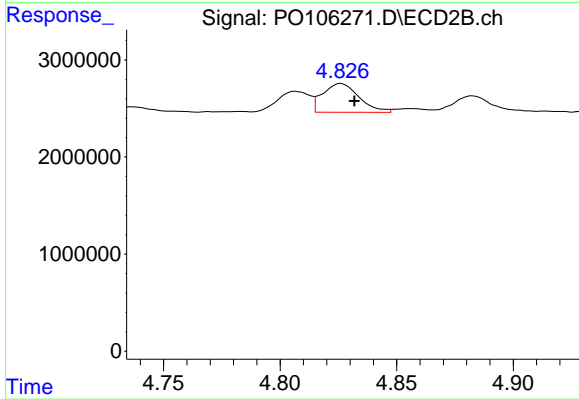
#11 AR-1232-1

R.T.: 4.095 min
 Delta R.T.: -0.003 min
 Response: 2813926
 Conc: 47.90 ng/ml



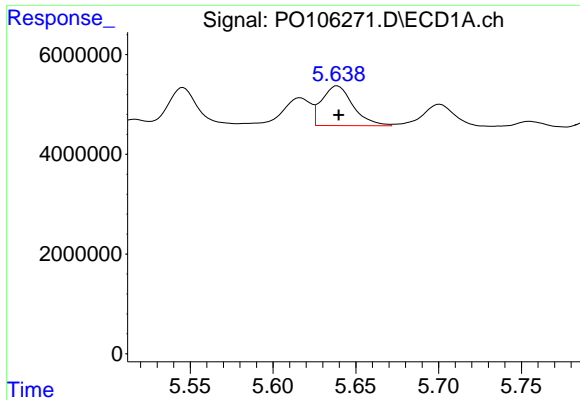
#12 AR-1232-2

R.T.: 5.351 min
 Delta R.T.: 0.000 min
 Response: 10112396
 Conc: 93.08 ng/ml



#12 AR-1232-2

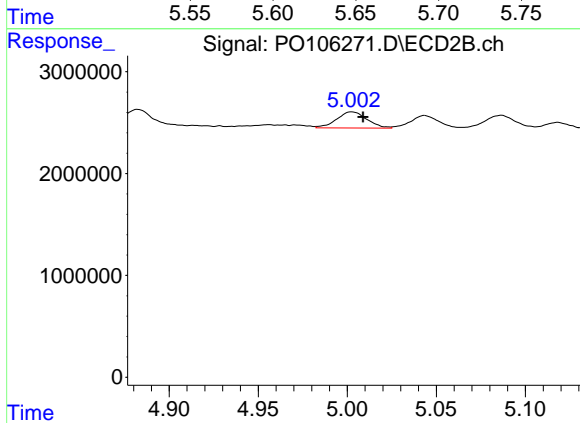
R.T.: 4.826 min
 Delta R.T.: -0.006 min
 Response: 3207159
 Conc: 56.79 ng/ml



#13 AR-1232-3

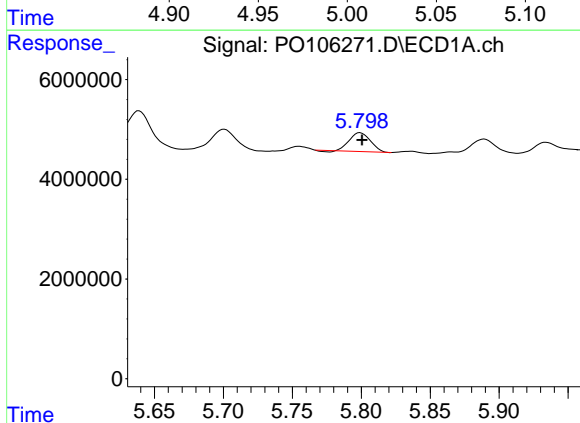
R.T.: 5.639 min
 Delta R.T.: 0.000 min
 Response: 10497707
 Conc: 53.22 ng/ml

Instrument :
 ECD_O
 ClientSampleId :
 MP-1



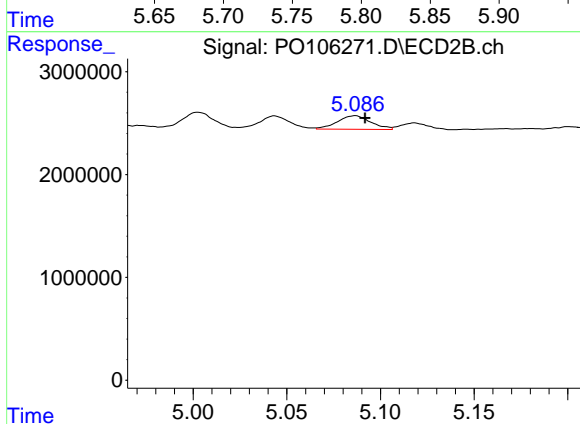
#13 AR-1232-3

R.T.: 5.003 min
 Delta R.T.: -0.006 min
 Response: 1887052
 Conc: 61.07 ng/ml



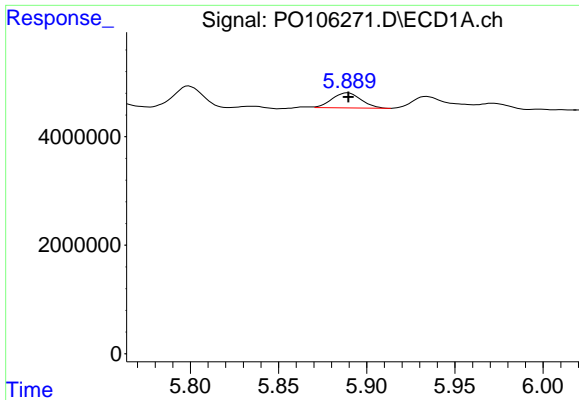
#14 AR-1232-4

R.T.: 5.799 min
 Delta R.T.: -0.001 min
 Response: 3991769
 Conc: 40.54 ng/ml



#14 AR-1232-4

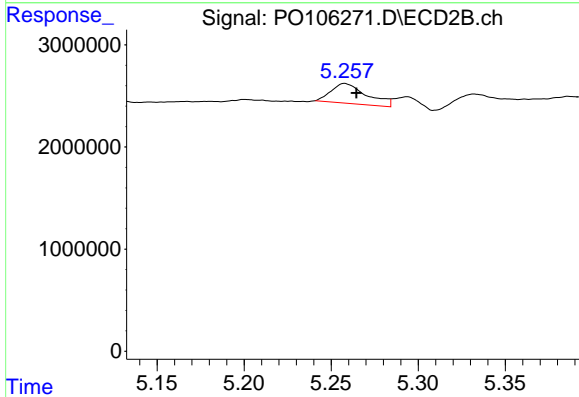
R.T.: 5.086 min
 Delta R.T.: -0.005 min
 Response: 1640567
 Conc: 60.72 ng/ml



#15 AR-1232-5

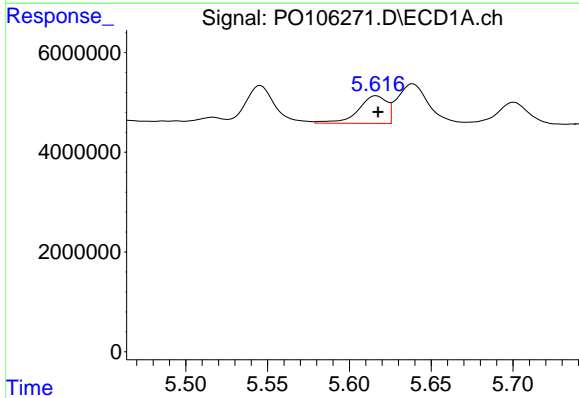
R.T.: 5.889 min
 Delta R.T.: 0.000 min
 Response: 3201193
 Conc: 42.05 ng/ml

Instrument :
 ECD_O
 ClientSampleId :
 MP-1



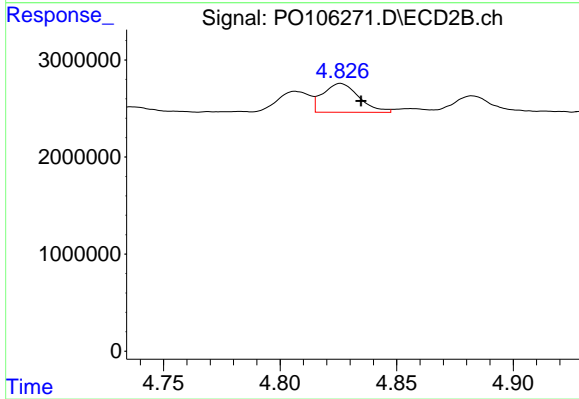
#15 AR-1232-5

R.T.: 5.258 min
 Delta R.T.: -0.007 min
 Response: 2777695
 Conc: 93.95 ng/ml



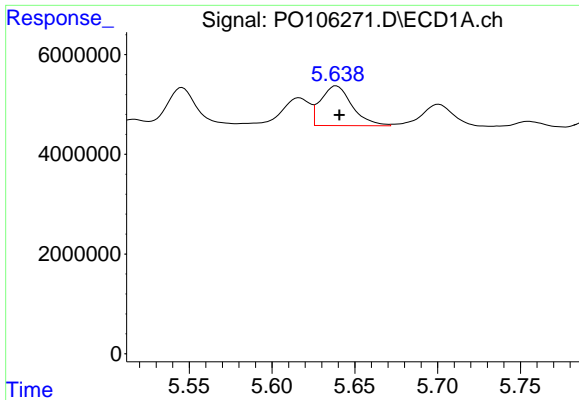
#16 AR-1242-1

R.T.: 5.616 min
 Delta R.T.: -0.001 min
 Response: 6683997
 Conc: 27.63 ng/ml



#16 AR-1242-1

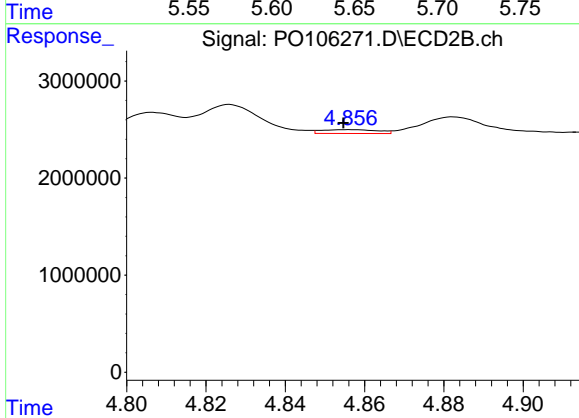
R.T.: 4.826 min
 Delta R.T.: -0.009 min
 Response: 3207159
 Conc: 45.09 ng/ml



#17 AR-1242-2

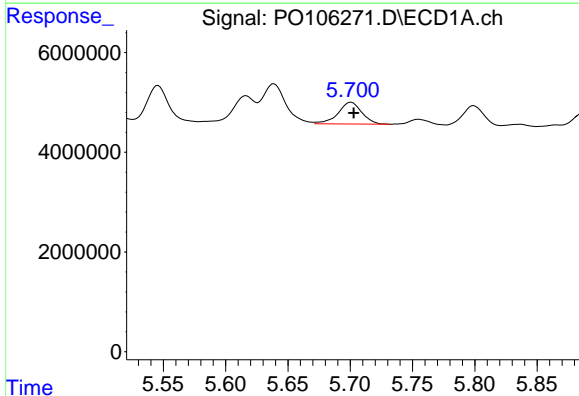
R.T.: 5.639 min
 Delta R.T.: -0.002 min
 Response: 10497707
 Conc: 31.61 ng/ml

Instrument :
 ECD_O
 ClientSampleId :
 MP-1



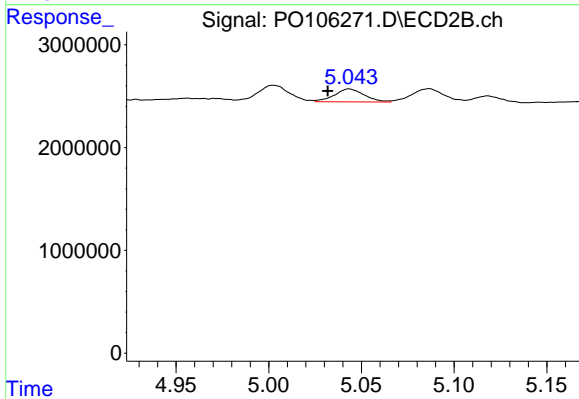
#17 AR-1242-2

R.T.: 4.857 min
 Delta R.T.: 0.002 min
 Response: 393992
 Conc: 4.20 ng/ml



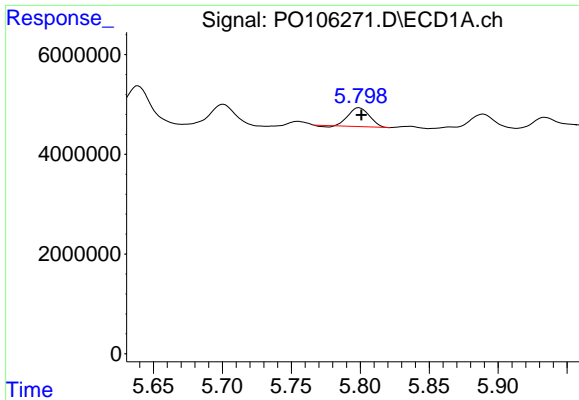
#18 AR-1242-3

R.T.: 5.701 min
 Delta R.T.: -0.002 min
 Response: 5843269
 Conc: 28.44 ng/ml



#18 AR-1242-3

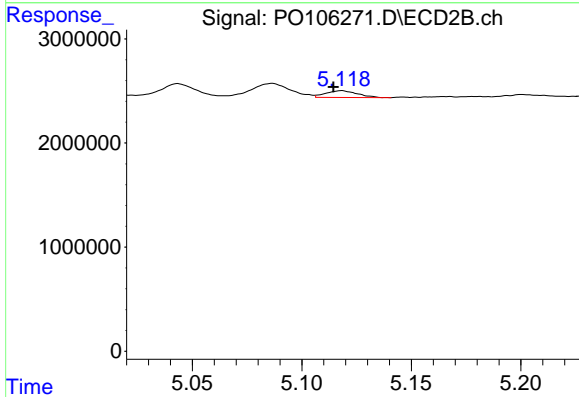
R.T.: 5.043 min
 Delta R.T.: 0.012 min
 Response: 1428978
 Conc: 28.02 ng/ml



#19 AR-1242-4

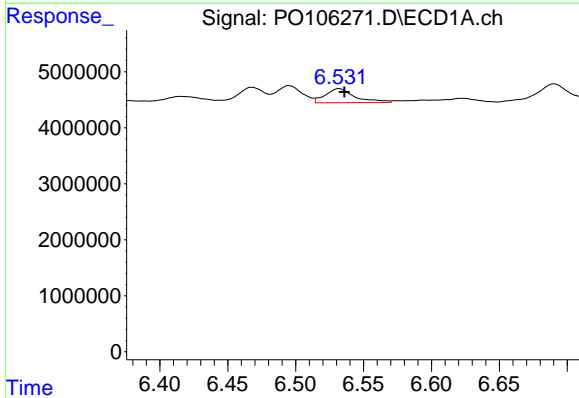
R.T.: 5.799 min
 Delta R.T.: -0.002 min
 Response: 3991769
 Conc: 23.79 ng/ml

Instrument :
 ECD_O
 ClientSampleId :
 MP-1



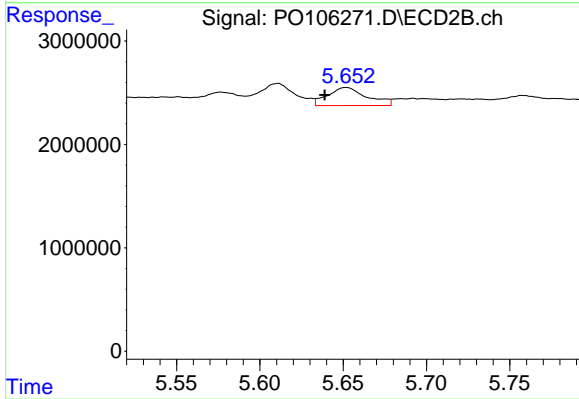
#19 AR-1242-4

R.T.: 5.118 min
 Delta R.T.: 0.004 min
 Response: 650141
 Conc: 12.68 ng/ml



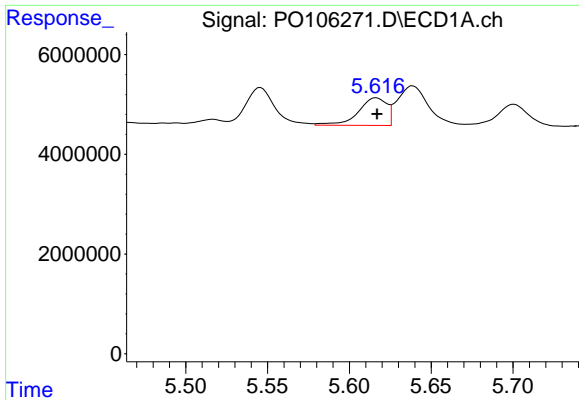
#20 AR-1242-5

R.T.: 6.532 min
 Delta R.T.: -0.004 min
 Response: 3773424
 Conc: 22.15 ng/ml



#20 AR-1242-5

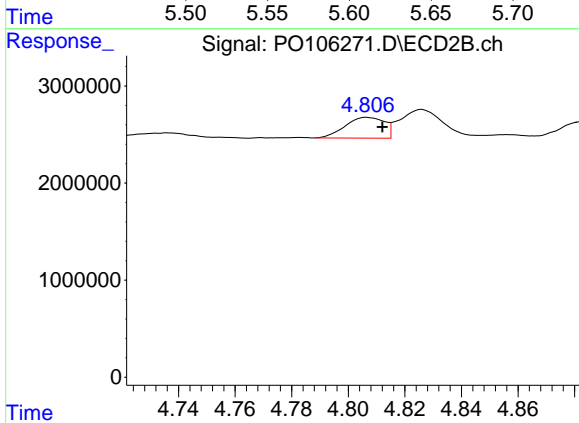
R.T.: 5.652 min
 Delta R.T.: 0.013 min
 Response: 2854580
 Conc: 44.17 ng/ml



#21 AR-1248-1

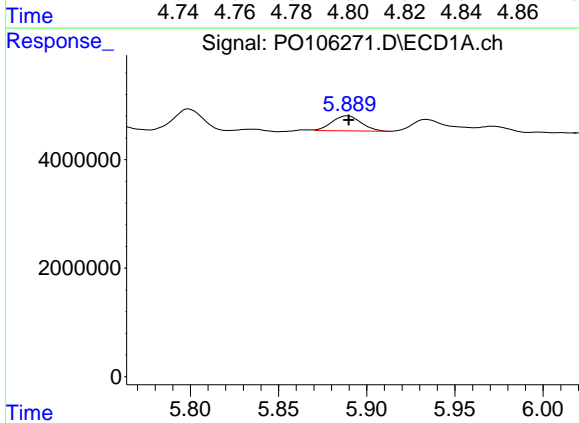
R.T.: 5.616 min
 Delta R.T.: 0.000 min
 Response: 6683997
 Conc: 35.55 ng/ml

Instrument :
 ECD_O
 ClientSampleId :
 MP-1



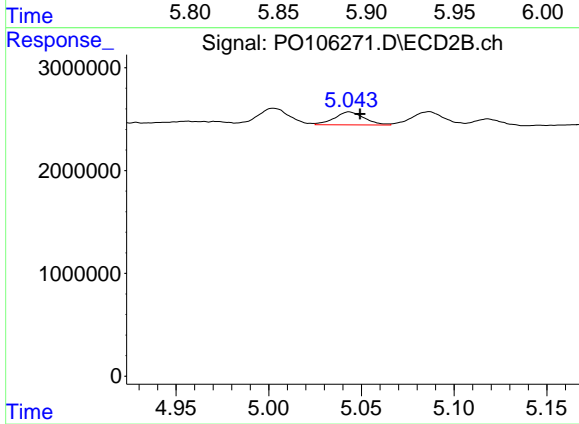
#21 AR-1248-1

R.T.: 4.807 min
 Delta R.T.: -0.005 min
 Response: 2057049
 Conc: 36.73 ng/ml



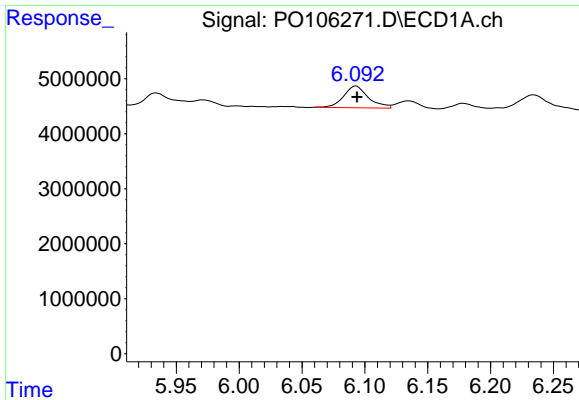
#22 AR-1248-2

R.T.: 5.889 min
 Delta R.T.: 0.000 min
 Response: 3201193
 Conc: 12.39 ng/ml



#22 AR-1248-2

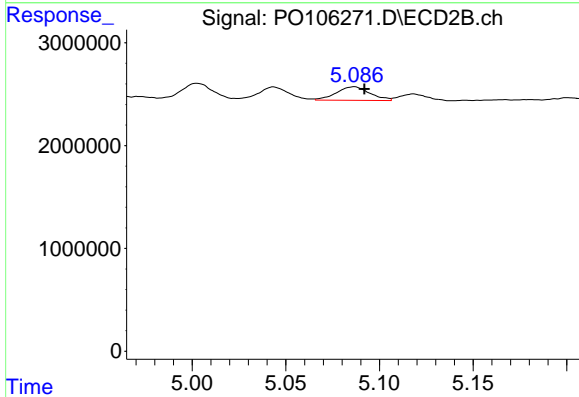
R.T.: 5.043 min
 Delta R.T.: -0.006 min
 Response: 1428978
 Conc: 19.20 ng/ml



#23 AR-1248-3

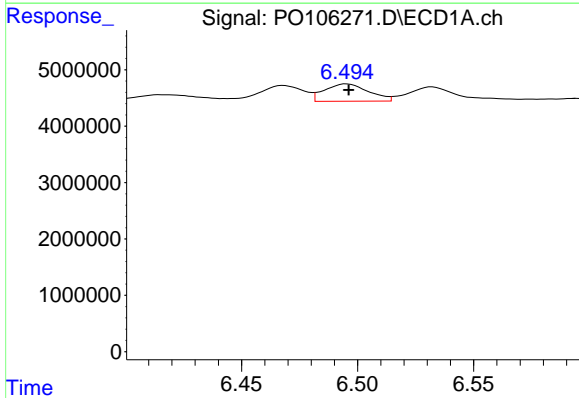
R.T.: 6.093 min
 Delta R.T.: -0.001 min
 Response: 5427280
 Conc: 19.00 ng/ml

Instrument :
 ECD_O
 ClientSampleId :
 MP-1



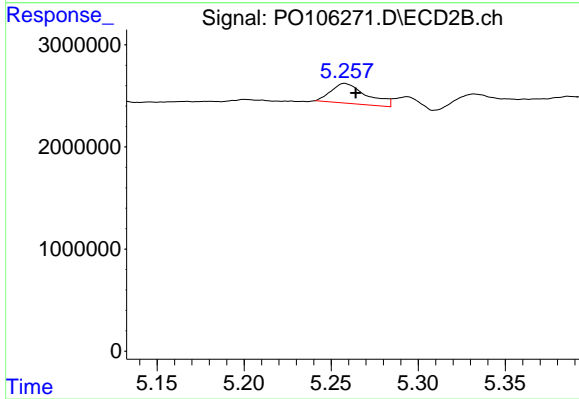
#23 AR-1248-3

R.T.: 5.086 min
 Delta R.T.: -0.006 min
 Response: 1640567
 Conc: 20.89 ng/ml



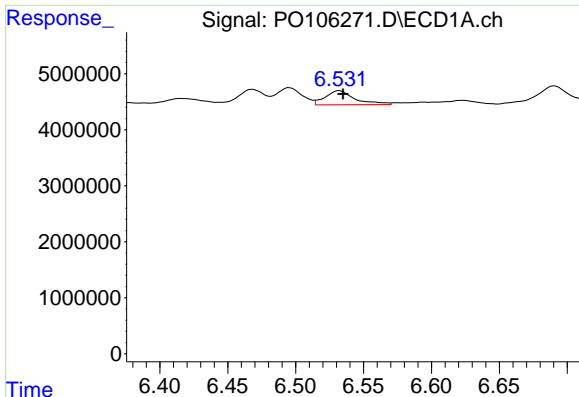
#24 AR-1248-4

R.T.: 6.495 min
 Delta R.T.: 0.000 min
 Response: 4056866
 Conc: 12.87 ng/ml



#24 AR-1248-4

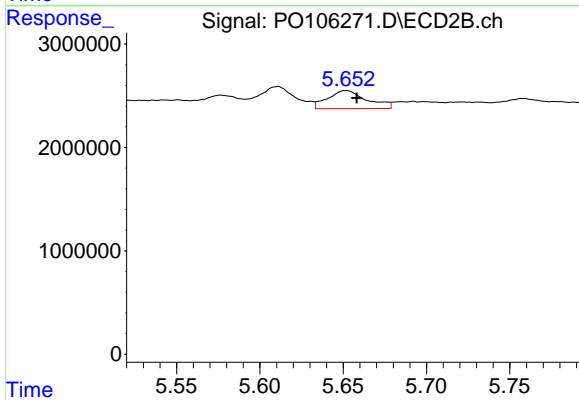
R.T.: 5.258 min
 Delta R.T.: -0.006 min
 Response: 2777695
 Conc: 29.83 ng/ml



#25 AR-1248-5

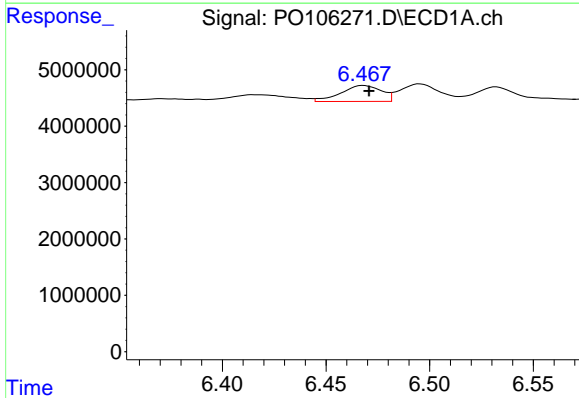
R.T.: 6.532 min
 Delta R.T.: -0.003 min
 Response: 3773424
 Conc: 12.43 ng/ml

Instrument :
 ECD_O
 ClientSampleId :
 MP-1



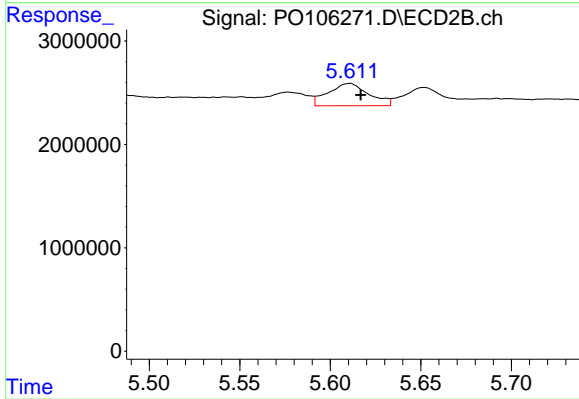
#25 AR-1248-5

R.T.: 5.652 min
 Delta R.T.: -0.006 min
 Response: 2854580
 Conc: 31.15 ng/ml



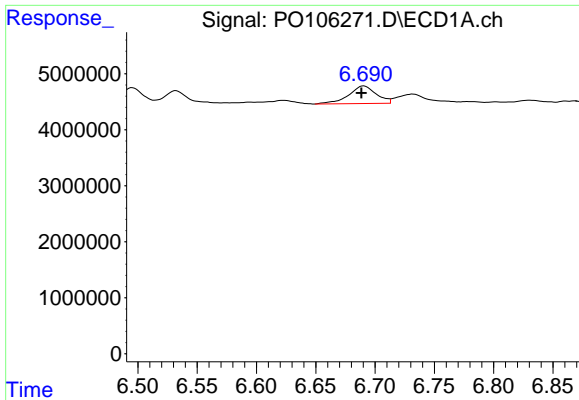
#26 AR-1254-1

R.T.: 6.468 min
 Delta R.T.: -0.003 min
 Response: 3830189
 Conc: 12.41 ng/ml



#26 AR-1254-1

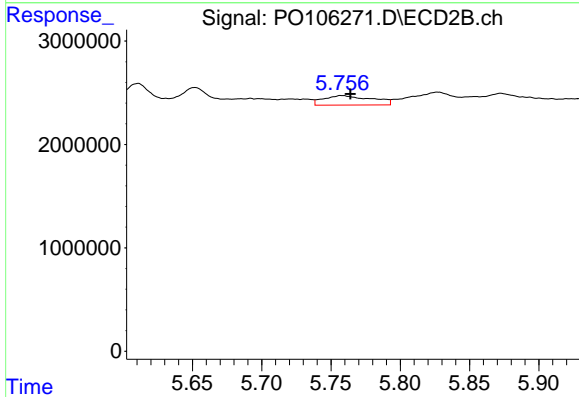
R.T.: 5.611 min
 Delta R.T.: -0.006 min
 Response: 3387148
 Conc: 25.10 ng/ml



#27 AR-1254-2

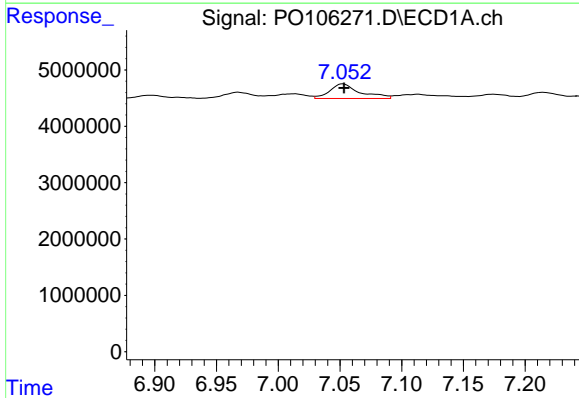
R.T.: 6.691 min
 Delta R.T.: 0.002 min
 Response: 5097212
 Conc: 11.06 ng/ml

Instrument :
 ECD_O
 ClientSampleId :
 MP-1



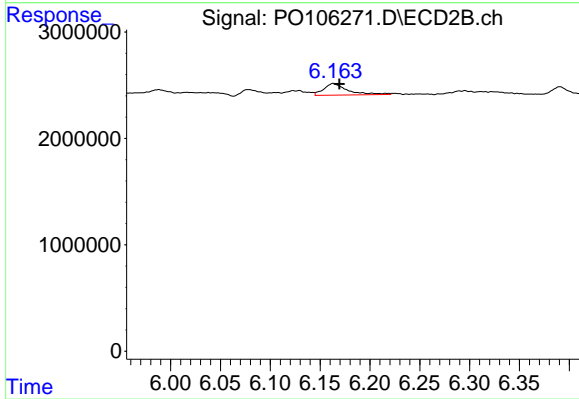
#27 AR-1254-2

R.T.: 5.758 min
 Delta R.T.: -0.006 min
 Response: 2204361
 Conc: 18.16 ng/ml



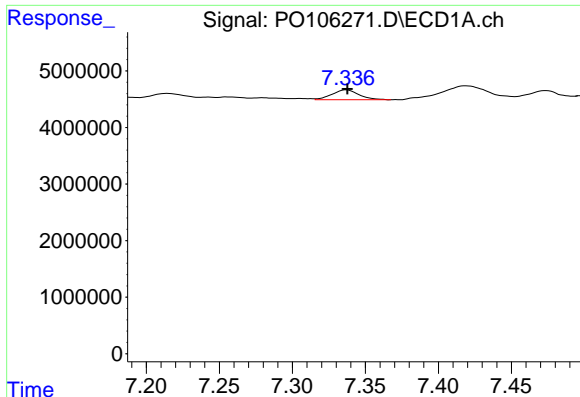
#28 AR-1254-3

R.T.: 7.052 min
 Delta R.T.: 0.000 min
 Response: 4395452
 Conc: 9.30 ng/ml



#28 AR-1254-3

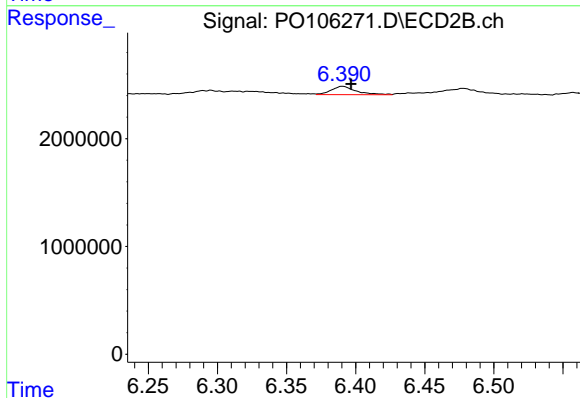
R.T.: 6.163 min
 Delta R.T.: -0.006 min
 Response: 1831016
 Conc: 9.50 ng/ml



#29 AR-1254-4

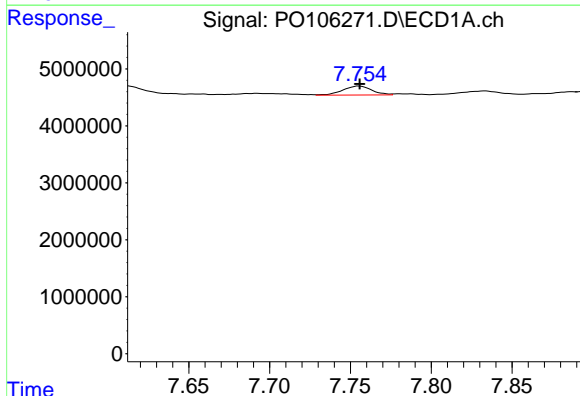
R.T.: 7.337 min
 Delta R.T.: 0.000 min
 Response: 2254436
 Conc: 6.47 ng/ml

Instrument :
 ECD_O
 ClientSampleId :
 MP-1



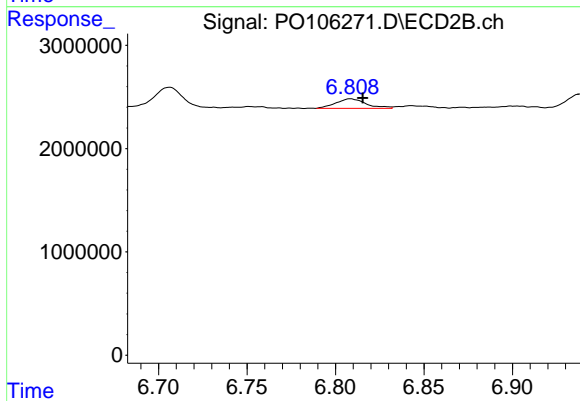
#29 AR-1254-4

R.T.: 6.391 min
 Delta R.T.: -0.006 min
 Response: 963713
 Conc: 7.95 ng/ml



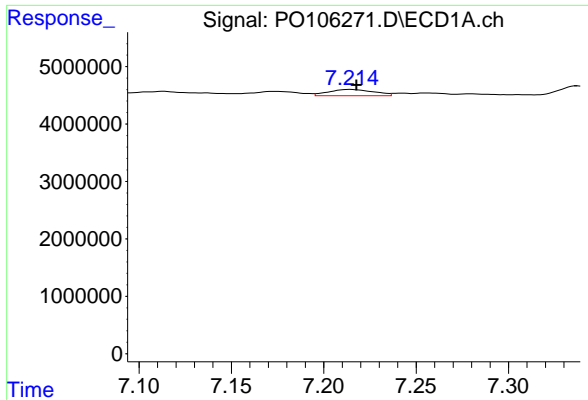
#30 AR-1254-5

R.T.: 7.755 min
 Delta R.T.: 0.000 min
 Response: 1998200
 Conc: 5.47 ng/ml



#30 AR-1254-5

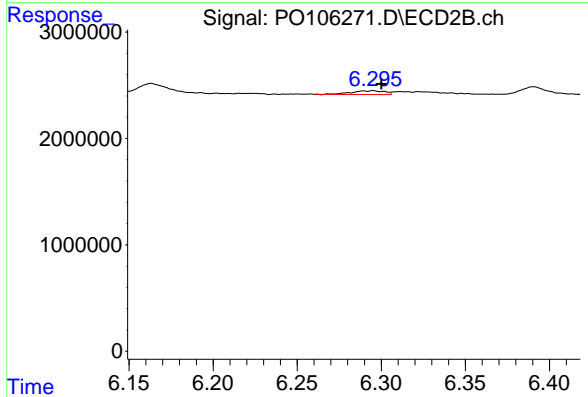
R.T.: 6.809 min
 Delta R.T.: -0.007 min
 Response: 1107822
 Conc: 6.27 ng/ml



#31 AR-1260-1

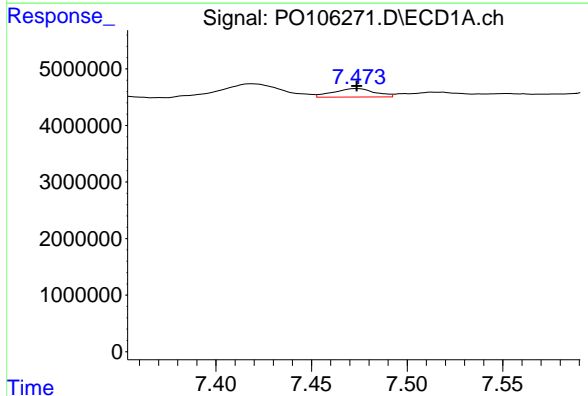
R.T.: 7.214 min
 Delta R.T.: -0.003 min
 Response: 1883279
 Conc: 5.25 ng/ml

Instrument :
 ECD_O
 ClientSampleId :
 MP-1



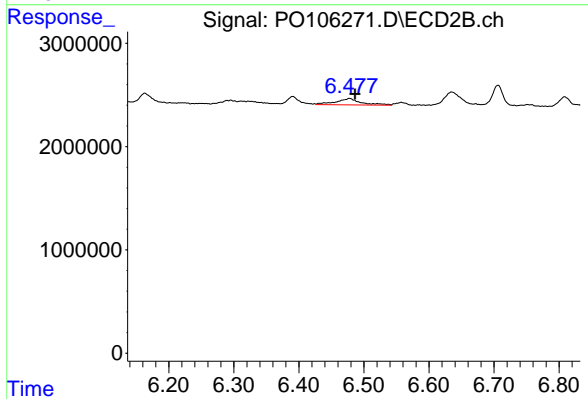
#31 AR-1260-1

R.T.: 6.295 min
 Delta R.T.: -0.005 min
 Response: 472999
 Conc: 3.59 ng/ml



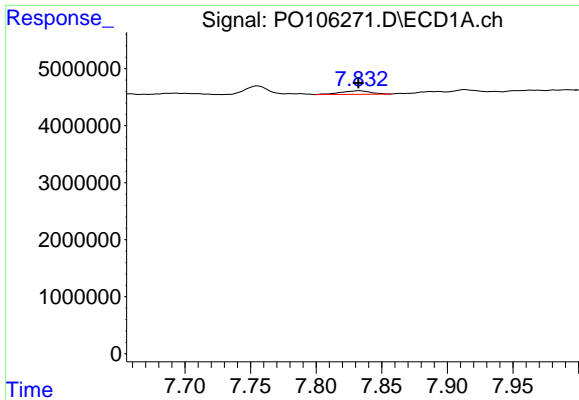
#32 AR-1260-2

R.T.: 7.474 min
 Delta R.T.: 0.000 min
 Response: 2231176
 Conc: 5.31 ng/ml



#32 AR-1260-2

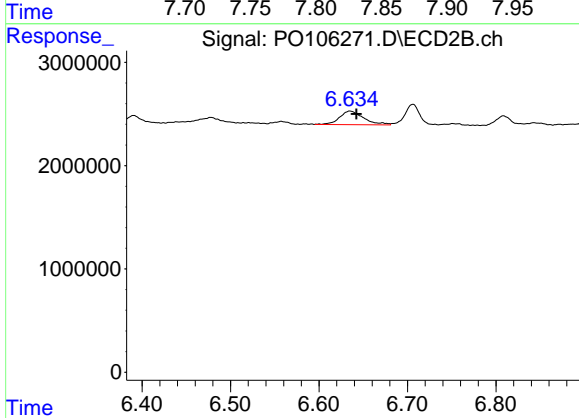
R.T.: 6.478 min
 Delta R.T.: -0.009 min
 Response: 1638213
 Conc: 9.98 ng/ml



#33 AR-1260-3

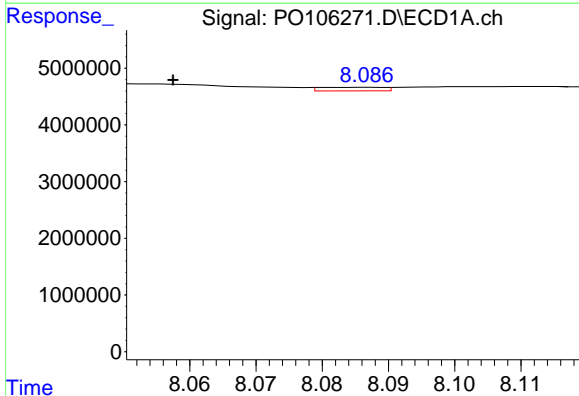
R.T.: 7.833 min
 Delta R.T.: 0.000 min
 Response: 947657
 Conc: 3.54 ng/ml

Instrument :
 ECD_O
 ClientSampleId :
 MP-1



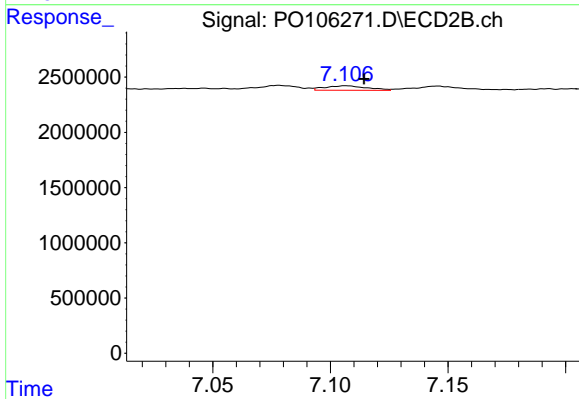
#33 AR-1260-3

R.T.: 6.635 min
 Delta R.T.: -0.007 min
 Response: 2490423
 Conc: 14.76 ng/ml



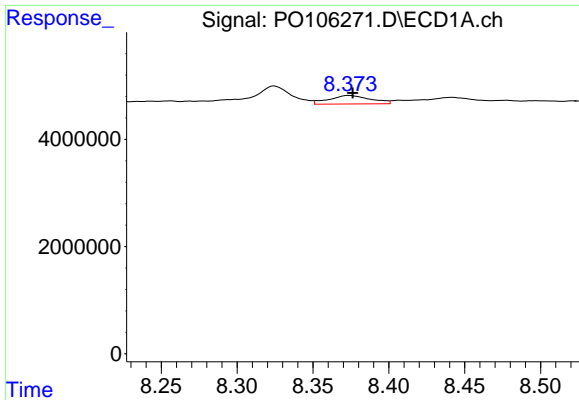
#34 AR-1260-4

R.T.: 8.087 min
 Delta R.T.: 0.029 min
 Response: 413042
 Conc: 1.33 ng/ml



#34 AR-1260-4

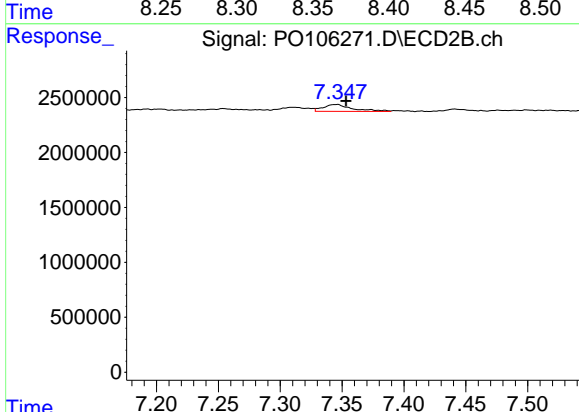
R.T.: 7.107 min
 Delta R.T.: -0.008 min
 Response: 511406
 Conc: 4.61 ng/ml



#35 AR-1260-5

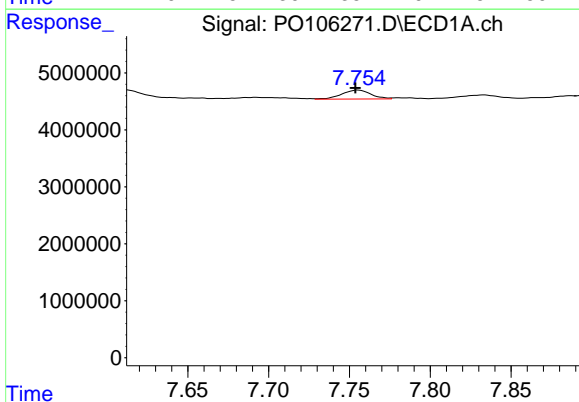
R.T.: 8.374 min
 Delta R.T.: -0.002 min
 Response: 3041611
 Conc: 5.47 ng/ml

Instrument :
 ECD_O
 ClientSampleId :
 MP-1



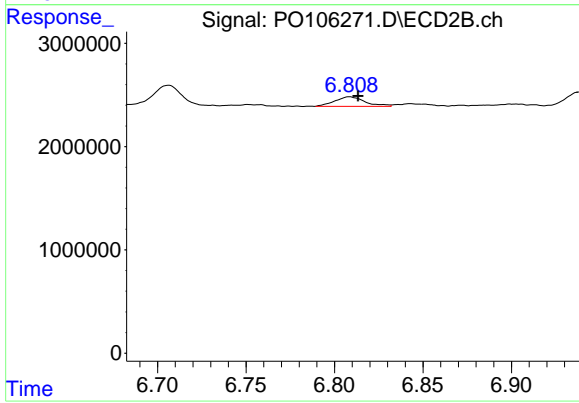
#35 AR-1260-5

R.T.: 7.346 min
 Delta R.T.: -0.008 min
 Response: 1043580
 Conc: 3.85 ng/ml



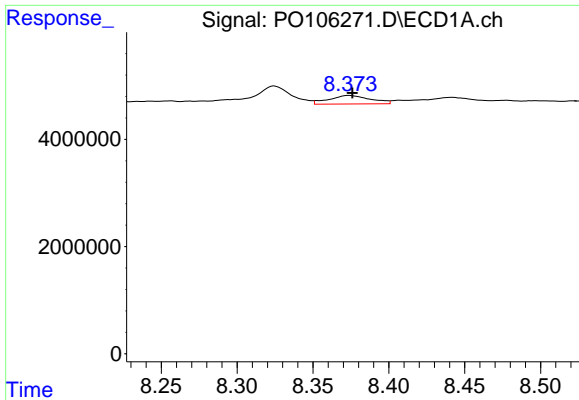
#36 AR-1262-1

R.T.: 7.755 min
 Delta R.T.: 0.002 min
 Response: 1998200
 Conc: 6.88 ng/ml



#36 AR-1262-1

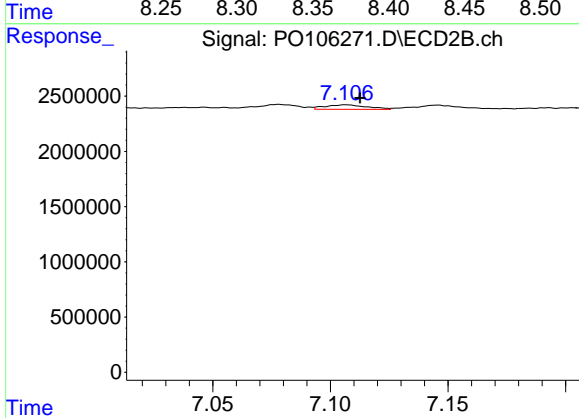
R.T.: 6.809 min
 Delta R.T.: -0.005 min
 Response: 1107822
 Conc: 11.49 ng/ml



#37 AR-1262-2

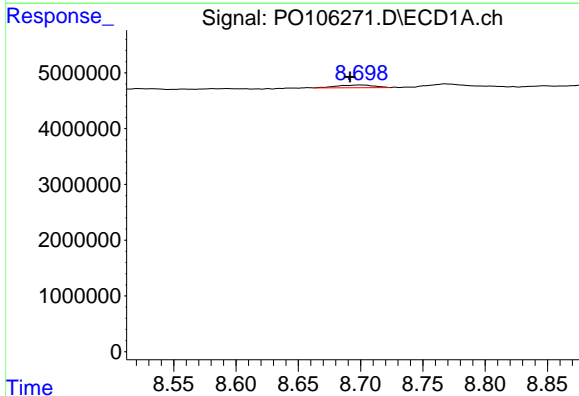
R.T.: 8.374 min
 Delta R.T.: -0.002 min
 Response: 3041611
 Conc: 4.23 ng/ml

Instrument :
 ECD_O
 ClientSampleId :
 MP-1



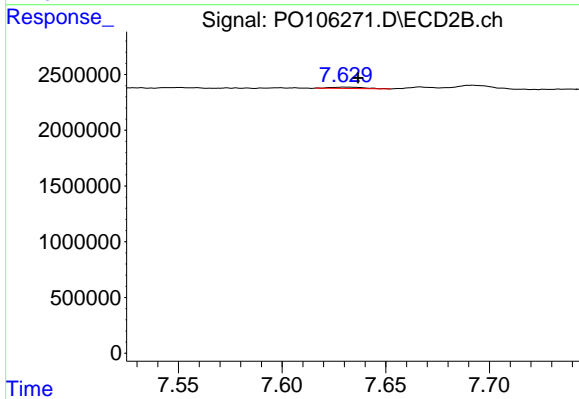
#37 AR-1262-2

R.T.: 7.107 min
 Delta R.T.: -0.006 min
 Response: 511406
 Conc: 3.29 ng/ml



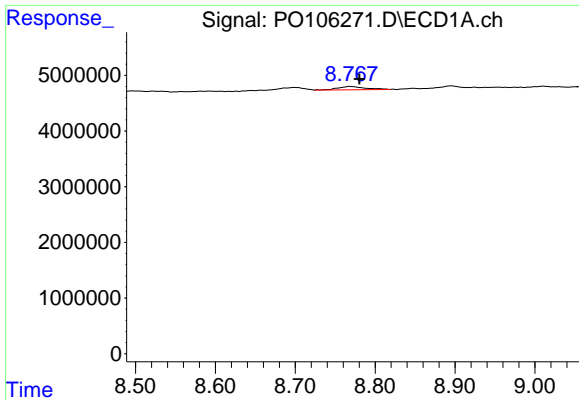
#38 AR-1262-3

R.T.: 8.699 min
 Delta R.T.: 0.008 min
 Response: 1029225
 Conc: 2.14 ng/ml



#38 AR-1262-3

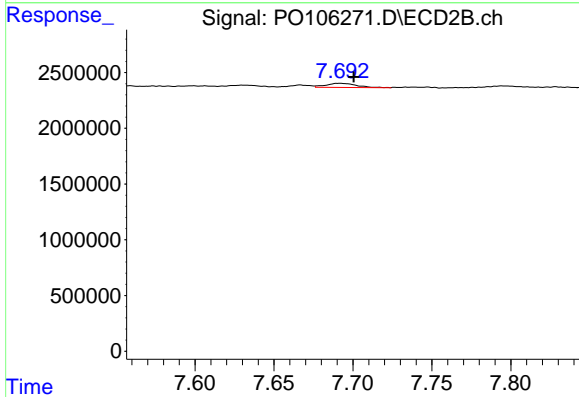
R.T.: 7.631 min
 Delta R.T.: -0.006 min
 Response: 139439
 Conc: 1.23 ng/ml



#39 AR-1262-4

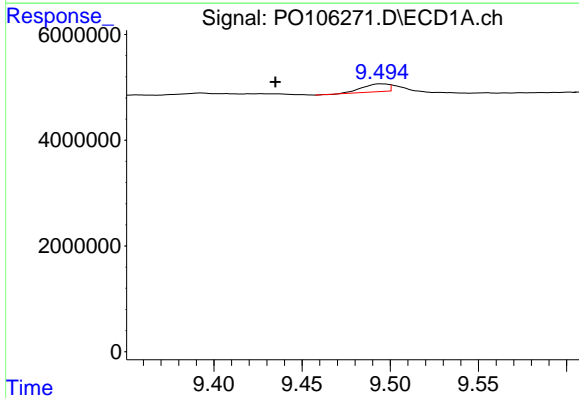
R.T.: 8.768 min
 Delta R.T.: -0.012 min
 Response: 1380844
 Conc: 3.85 ng/ml

Instrument :
 ECD_O
 ClientSampleId :
 MP-1



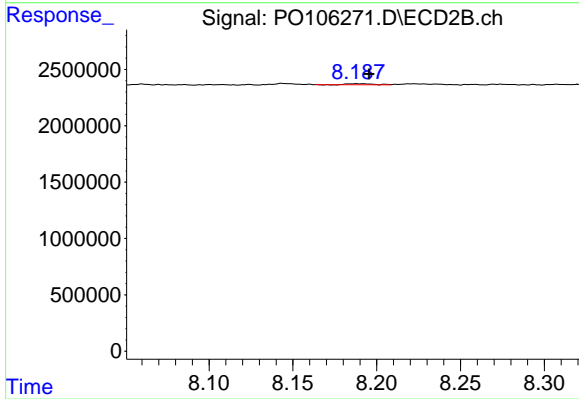
#39 AR-1262-4

R.T.: 7.692 min
 Delta R.T.: -0.009 min
 Response: 496191
 Conc: 2.08 ng/ml



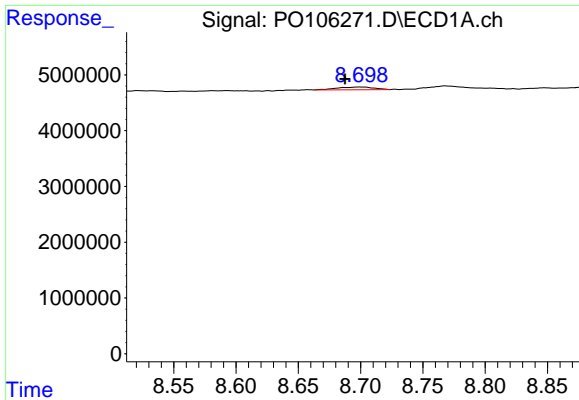
#40 AR-1262-5

R.T.: 9.495 min
 Delta R.T.: 0.060 min
 Response: 1583626
 Conc: 6.16 ng/ml



#40 AR-1262-5

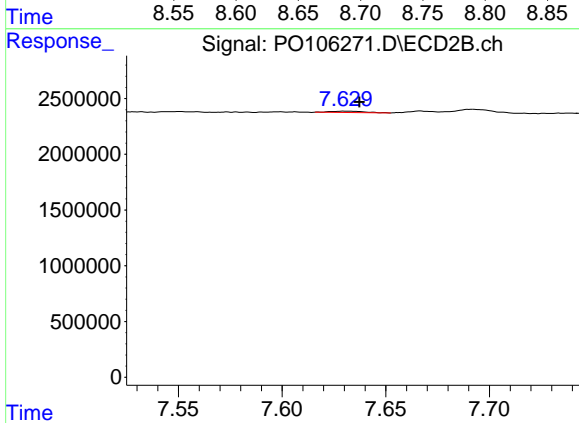
R.T.: 8.191 min
 Delta R.T.: -0.004 min
 Response: 99648
 Conc: 0.91 ng/ml



#41 AR-1268-1

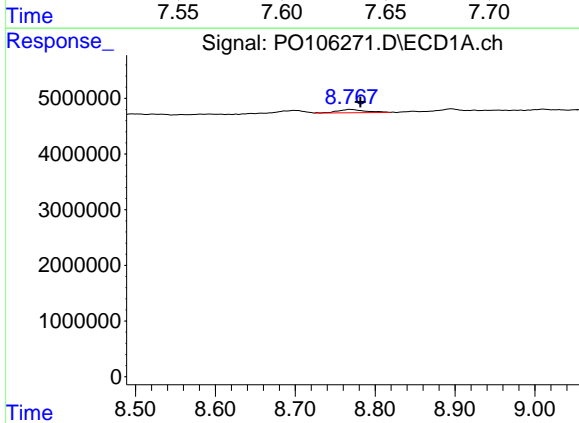
R.T.: 8.699 min
 Delta R.T.: 0.012 min
 Response: 1029225
 Conc: 1.26 ng/ml

Instrument :
 ECD_O
 ClientSampleId :
 MP-1



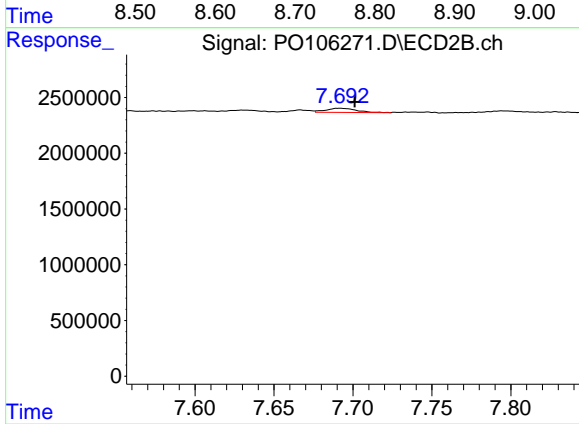
#41 AR-1268-1

R.T.: 7.631 min
 Delta R.T.: -0.006 min
 Response: 139439
 Conc: 0.41 ng/ml



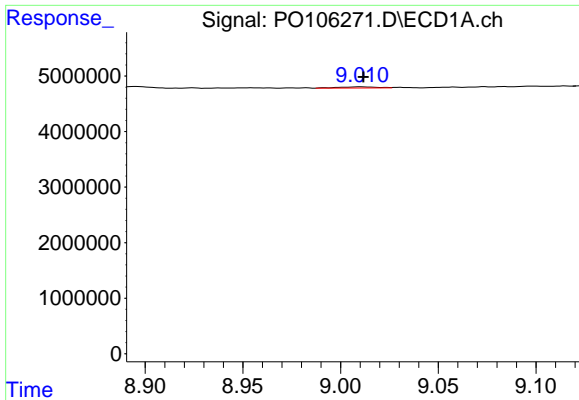
#42 AR-1268-2

R.T.: 8.768 min
 Delta R.T.: -0.014 min
 Response: 1380844
 Conc: 1.88 ng/ml



#42 AR-1268-2

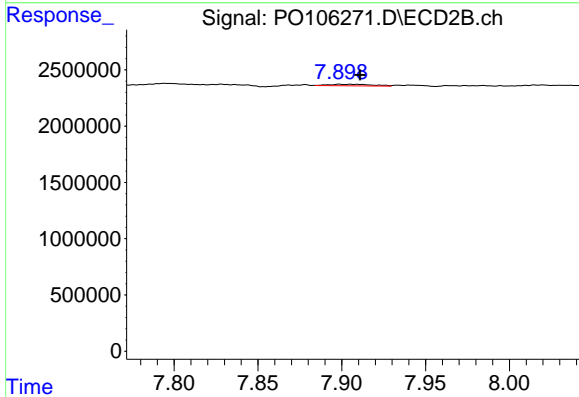
R.T.: 7.692 min
 Delta R.T.: -0.010 min
 Response: 496191
 Conc: 1.54 ng/ml



#43 AR-1268-3

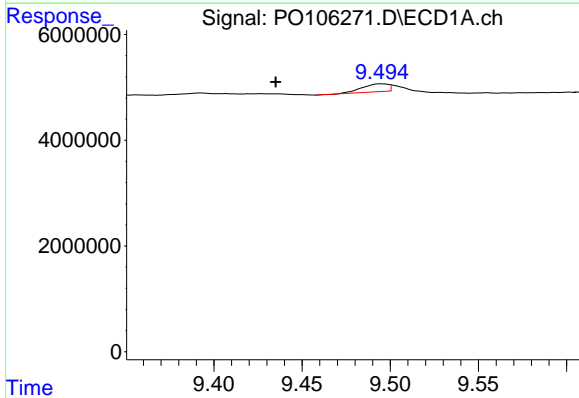
R.T.: 9.010 min
 Delta R.T.: -0.001 min
 Response: 290175
 Conc: 0.47 ng/ml

Instrument :
 ECD_O
 ClientSampleId :
 MP-1



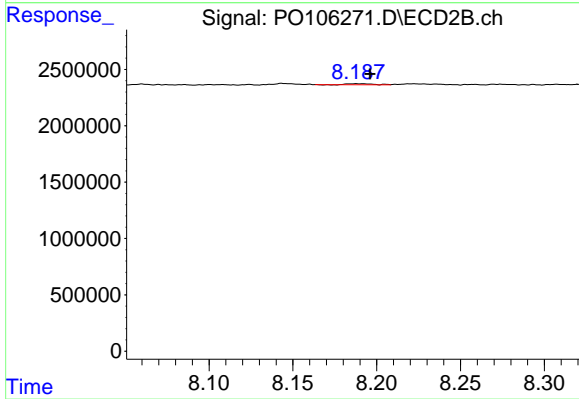
#43 AR-1268-3

R.T.: 7.899 min
 Delta R.T.: -0.012 min
 Response: 234823
 Conc: 0.87 ng/ml



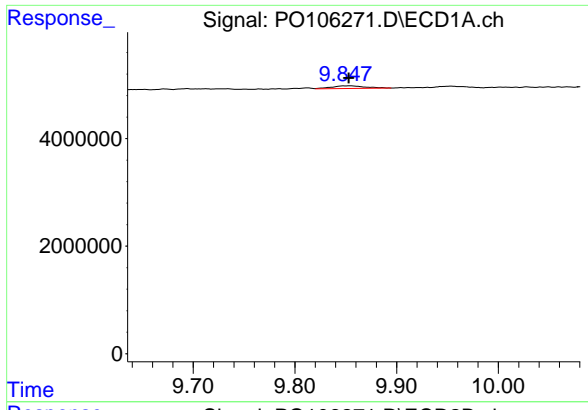
#44 AR-1268-4

R.T.: 9.495 min
 Delta R.T.: 0.060 min
 Response: 1583626
 Conc: 5.85 ng/ml



#44 AR-1268-4

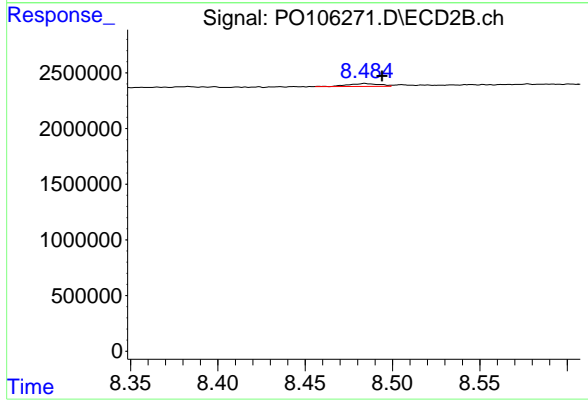
R.T.: 8.191 min
 Delta R.T.: -0.005 min
 Response: 99648
 Conc: 0.88 ng/ml



#45 AR-1268-5

R.T.: 9.848 min
 Delta R.T.: -0.005 min
 Response: 1078736
 Conc: 0.53 ng/ml

Instrument :
 ECD_O
 ClientSampleId :
 MP-1



#45 AR-1268-5

R.T.: 8.484 min
 Delta R.T.: -0.010 min
 Response: 316043
 Conc: 0.37 ng/ml