

Data Path : Z:\pestpcbsrv\HPCHEM1\ECD_0\Data\P0090718\
 Data File : P0048839.D
 Signal(s) : Signal #1: ECD1A.CH Signal #2: ECD2B.CH
 Acq On : 07 Sep 2018 16:07
 Operator : SM/SJ
 Sample : AR1660CCC500
 Misc :
 ALS Vial : 3 Sample Multiplier: 1

Instrument :
 ECD_0
 ClientSampleId :
 AR1660CCC500

Integration File signal 1: autoint1.e
 Integration File signal 2: autoint2.e
 Quant Time: Sep 07 22:55:10 2018
 Quant Method : Z:\pestpcbsrv\HPCHEM1\ECD_0\methods\P0090418.M
 Quant Title : GC EXTRACTABLES
 QLast Update : Thu Sep 06 03:44:31 2018
 Response via : Initial Calibration
 Integrator: ChemStation 6890 Scale Mode: Small noise peaks clipped

Volume Inj. : 2 µl
 Signal #1 Phase : ZB-MR1 Signal #2 Phase: ZB-MR2
 Signal #1 Info : 30Mx0.32mmx 0.50µ Signal #2 Info : 30M x 0.32mm x 0.25µm

Compound	RT#1	RT#2	Resp#1	Resp#2	ng/ml	ng/ml

System Monitoring Compounds						
1) SA Tetrachlo...	4.459	3.530	6744743	7867033	55.900	50.331
2) SA Decachlor...	10.203	8.468	7171202	8451533	51.396	57.162
Target Compounds						
3) L1 AR-1016-1	5.169	4.193	1845289	2346983	568.307	541.567
4) L1 AR-1016-2	5.364	4.600	1959446	3611347	569.734	560.839
5) L1 AR-1016-3	5.631	4.619	2938039	4864844	581.883	576.148
6) L1 AR-1016-4	5.716	4.673	2585980	3487715	561.846	593.694
7) L1 AR-1016-5	6.109	5.044	2194998	2987379	565.556	577.850
31) L7 AR-1260-1	7.233	6.066	4474221	6092063	543.064	585.199
32) L7 AR-1260-2	7.488	6.252	5327655	7357629	542.169	587.548
33) L7 AR-1260-3	7.772	6.405	6404281	7050071	536.727	594.225
34) L7 AR-1260-4	8.073	6.873	4565198	5621444	531.890	594.167
35) L7 AR-1260-5	8.394	7.113	8599638	12828118	517.996	590.753

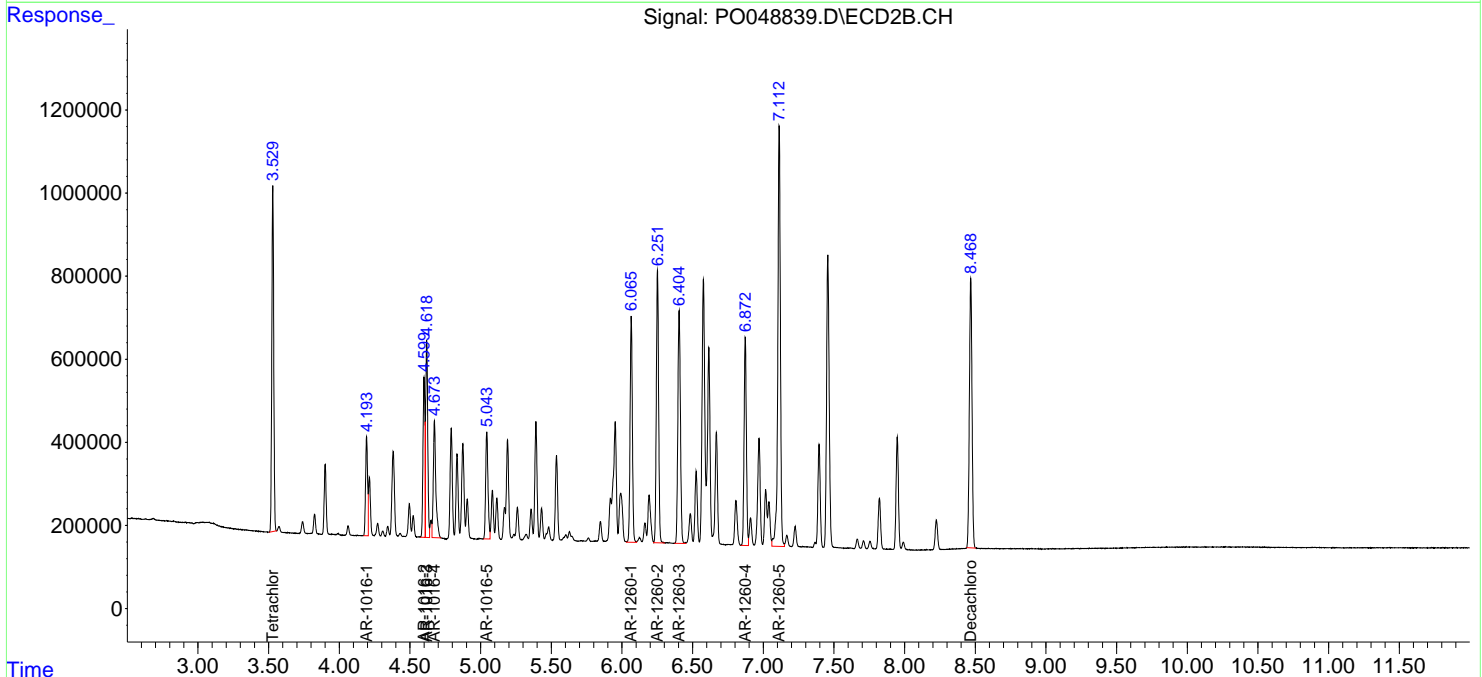
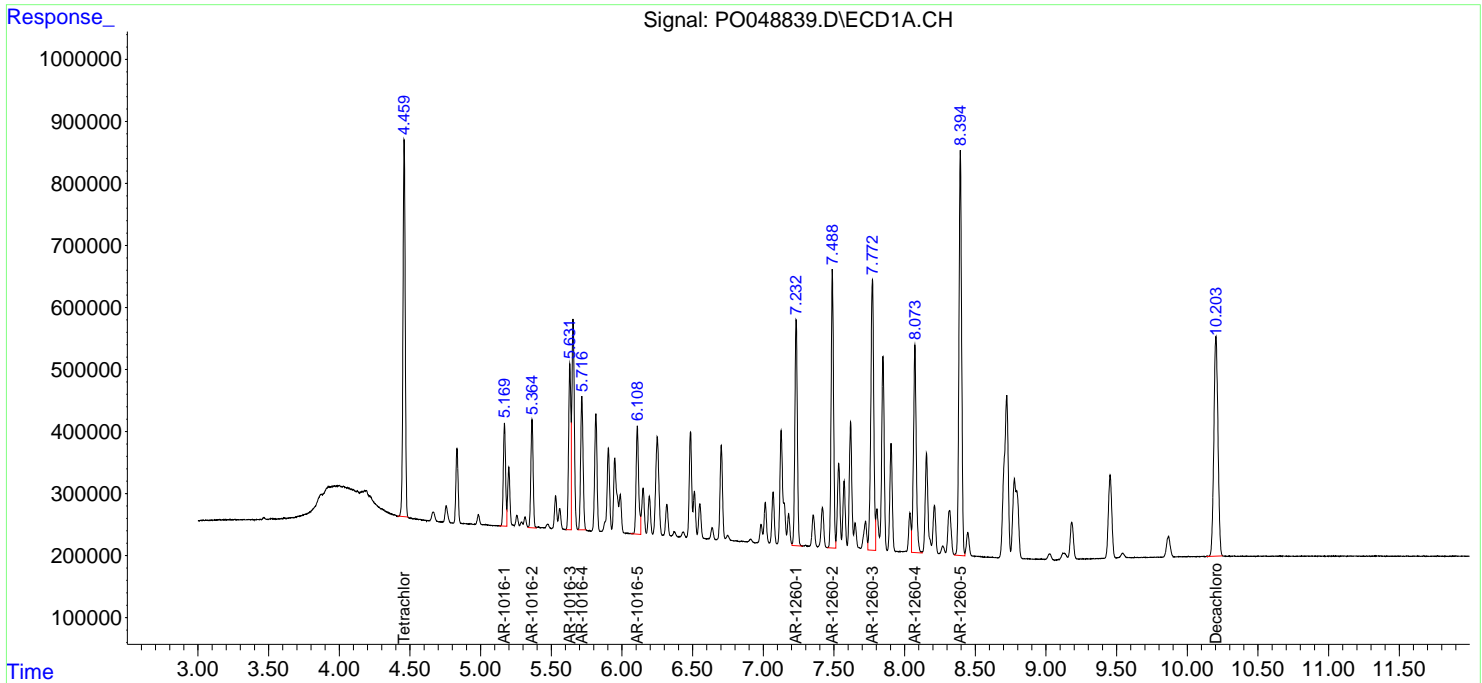
(f)=RT Delta > 1/2 Window (#)=Amounts differ by > 25% (m)=manual int.

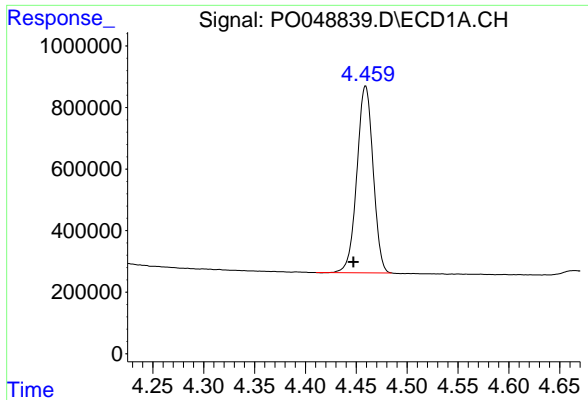
Data Path : Z:\pestpcbsrv\HPCHEM1\ECD_O\Data\P0090718\
 Data File : P0048839.D
 Signal(s) : Signal #1: ECD1A.CH Signal #2: ECD2B.CH
 Acq On : 07 Sep 2018 16:07
 Operator : SM/SJ
 Sample : AR1660CCC500
 Misc :
 ALS Vial : 3 Sample Multiplier: 1

Instrument :
 ECD_O
 ClientSampled :
 AR1660CCC500

Integration File signal 1: autoint1.e
 Integration File signal 2: autoint2.e
 Quant Time: Sep 07 22:55:10 2018
 Quant Method : Z:\pestpcbsrv\HPCHEM1\ECD_O\methods\P0090418.M
 Quant Title : GC EXTRACTABLES
 QLast Update : Thu Sep 06 03:44:31 2018
 Response via : Initial Calibration
 Integrator: ChemStation 6890 Scale Mode: Small noise peaks clipped

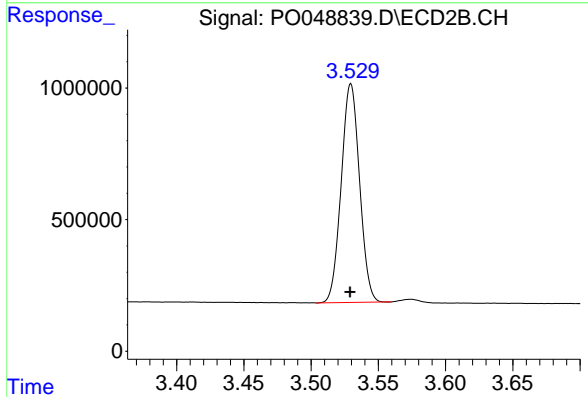
Volume Inj. : 2 µl
 Signal #1 Phase : ZB-MR1 Signal #2 Phase: ZB-MR2
 Signal #1 Info : 30Mx0.32mmx 0.50µ Signal #2 Info : 30M x 0.32mm x 0.25µm



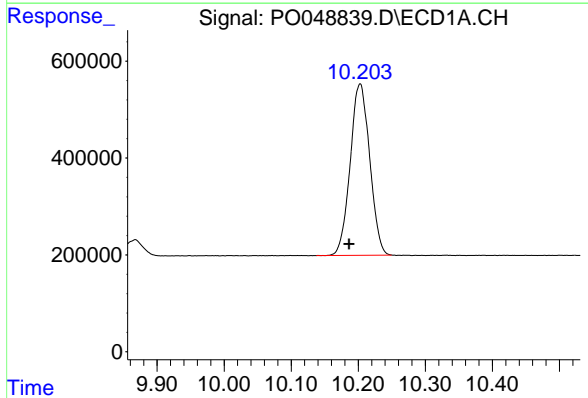


#1 Tetrachloro-m-xylene
 R.T.: 4.459 min
 Delta R.T.: 0.012 min
 Response: 6744743
 Conc: 55.90 ng/ml

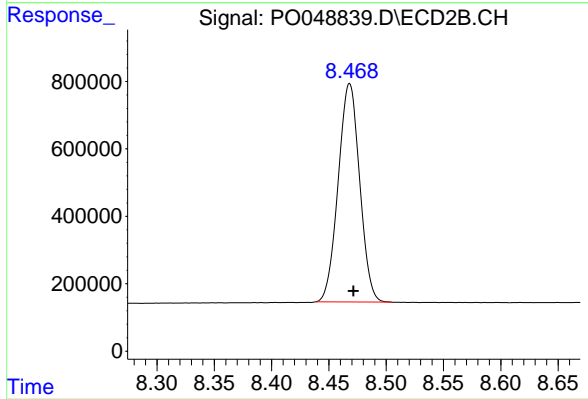
Instrument :
 ECD_O
 ClientSampleId :
 AR1660CCC500



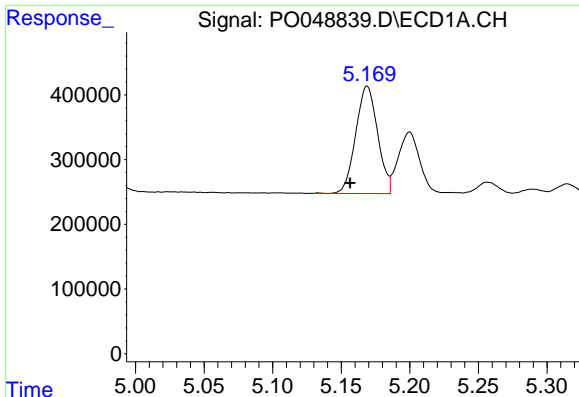
#1 Tetrachloro-m-xylene
 R.T.: 3.530 min
 Delta R.T.: 0.000 min
 Response: 7867033
 Conc: 50.33 ng/ml



#2 Decachlorobiphenyl
 R.T.: 10.203 min
 Delta R.T.: 0.017 min
 Response: 7171202
 Conc: 51.40 ng/ml



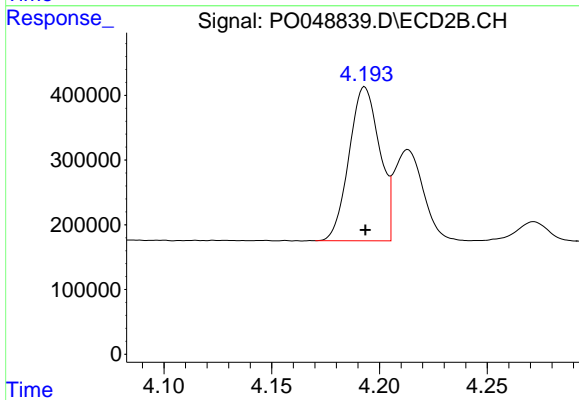
#2 Decachlorobiphenyl
 R.T.: 8.468 min
 Delta R.T.: -0.003 min
 Response: 8451533
 Conc: 57.16 ng/ml



#3 AR-1016-1

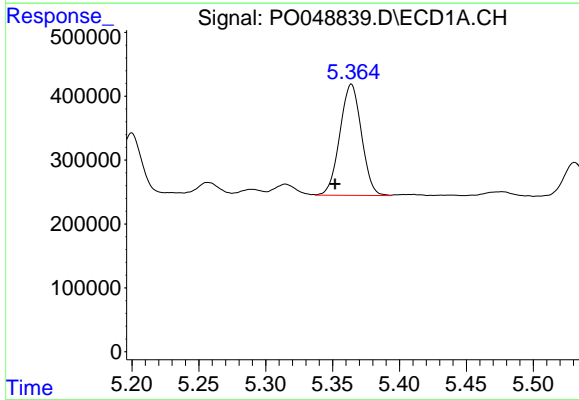
R.T.: 5.169 min
 Delta R.T.: 0.012 min
 Response: 1845289
 Conc: 568.31 ng/ml

Instrument :
 ECD_O
 ClientSampleId :
 AR1660CCC500



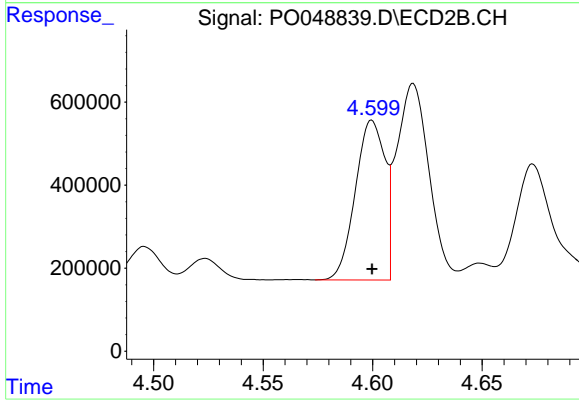
#3 AR-1016-1

R.T.: 4.193 min
 Delta R.T.: 0.000 min
 Response: 2346983
 Conc: 541.57 ng/ml



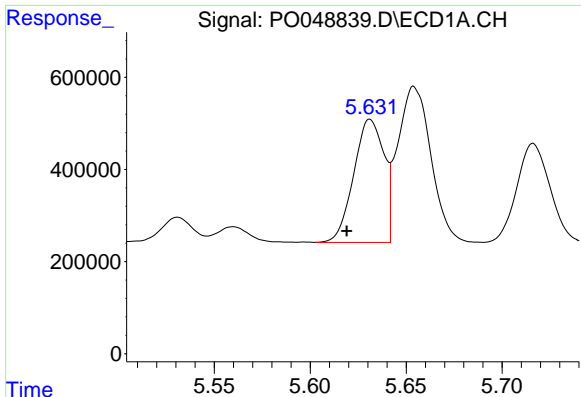
#4 AR-1016-2

R.T.: 5.364 min
 Delta R.T.: 0.012 min
 Response: 1959446
 Conc: 569.73 ng/ml



#4 AR-1016-2

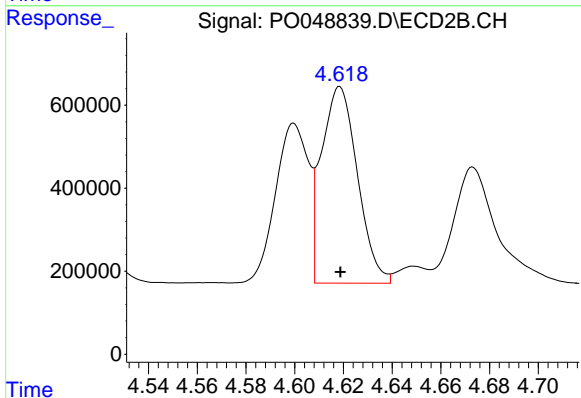
R.T.: 4.600 min
 Delta R.T.: 0.000 min
 Response: 3611347
 Conc: 560.84 ng/ml



#5 AR-1016-3

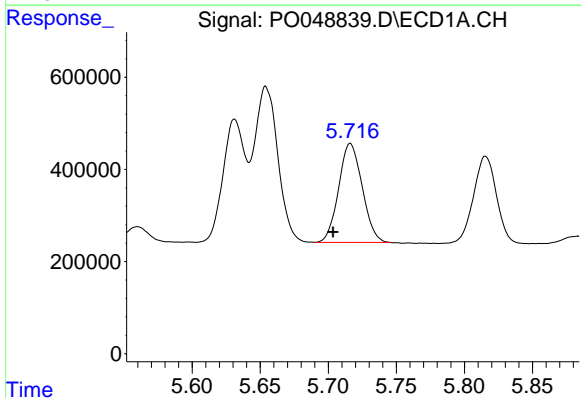
R.T.: 5.631 min
 Delta R.T.: 0.012 min
 Response: 2938039
 Conc: 581.88 ng/ml

Instrument :
 ECD_O
 ClientSampleId :
 AR1660CCC500



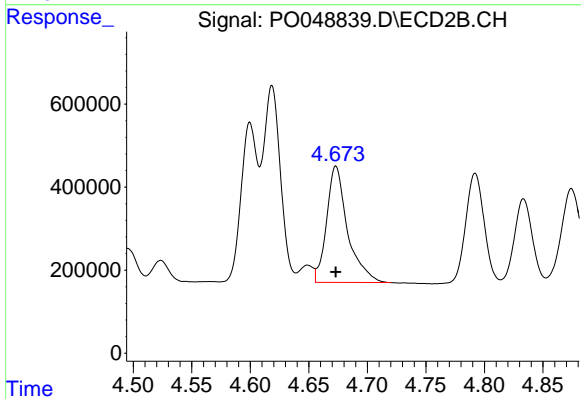
#5 AR-1016-3

R.T.: 4.619 min
 Delta R.T.: 0.000 min
 Response: 4864844
 Conc: 576.15 ng/ml



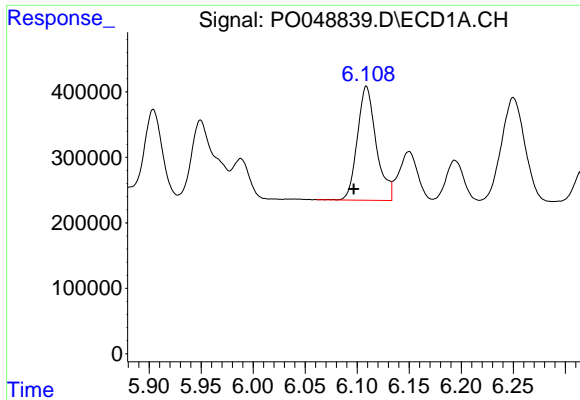
#6 AR-1016-4

R.T.: 5.716 min
 Delta R.T.: 0.013 min
 Response: 2585980
 Conc: 561.85 ng/ml



#6 AR-1016-4

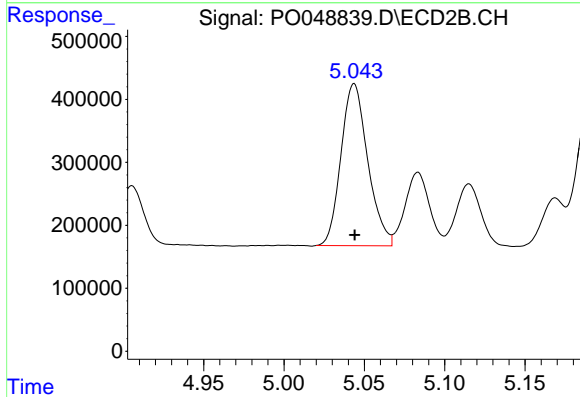
R.T.: 4.673 min
 Delta R.T.: 0.000 min
 Response: 3487715
 Conc: 593.69 ng/ml



#7 AR-1016-5

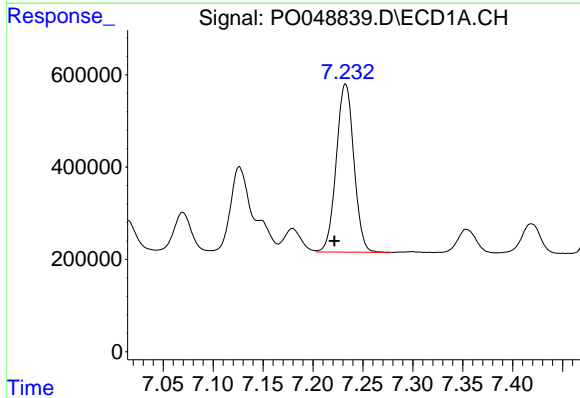
R.T.: 6.109 min
 Delta R.T.: 0.012 min
 Response: 2194998
 Conc: 565.56 ng/ml

Instrument :
 ECD_O
 ClientSampleId :
 AR1660CCC500



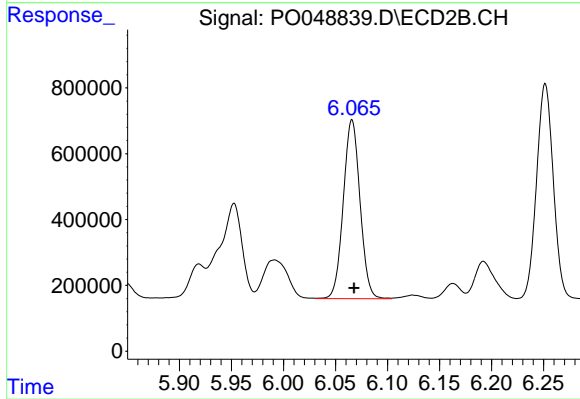
#7 AR-1016-5

R.T.: 5.044 min
 Delta R.T.: 0.000 min
 Response: 2987379
 Conc: 577.85 ng/ml



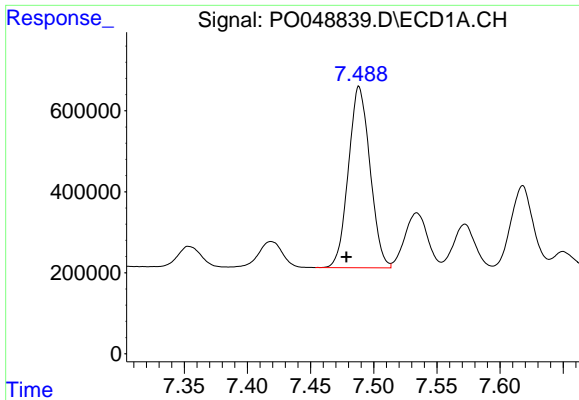
#31 AR-1260-1

R.T.: 7.233 min
 Delta R.T.: 0.011 min
 Response: 4474221
 Conc: 543.06 ng/ml



#31 AR-1260-1

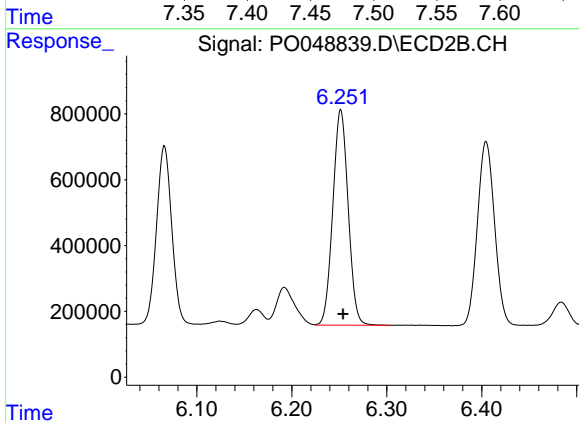
R.T.: 6.066 min
 Delta R.T.: -0.002 min
 Response: 6092063
 Conc: 585.20 ng/ml



#32 AR-1260-2

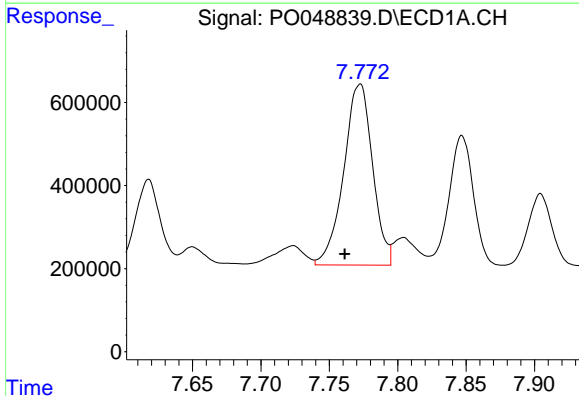
R.T.: 7.488 min
 Delta R.T.: 0.010 min
 Response: 5327655
 Conc: 542.17 ng/ml

Instrument :
 ECD_O
 ClientSampleId :
 AR1660CCC500



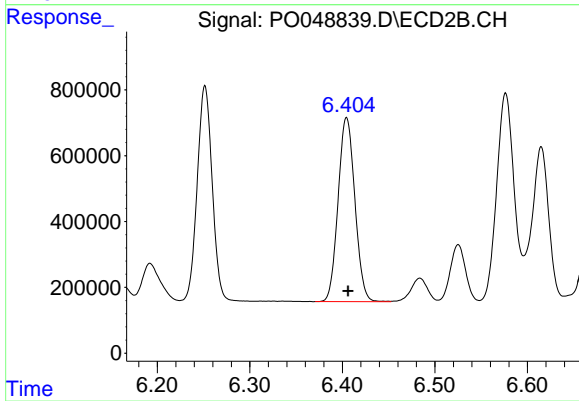
#32 AR-1260-2

R.T.: 6.252 min
 Delta R.T.: -0.002 min
 Response: 7357629
 Conc: 587.55 ng/ml



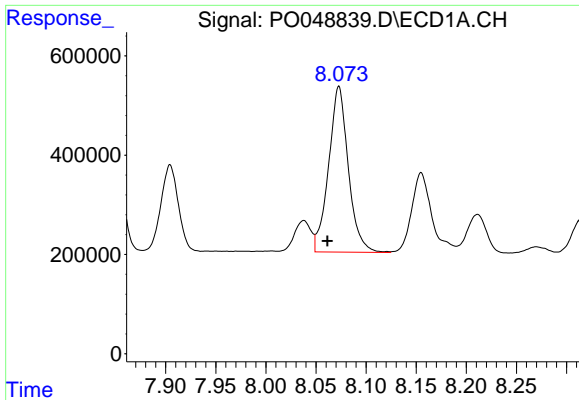
#33 AR-1260-3

R.T.: 7.772 min
 Delta R.T.: 0.011 min
 Response: 6404281
 Conc: 536.73 ng/ml



#33 AR-1260-3

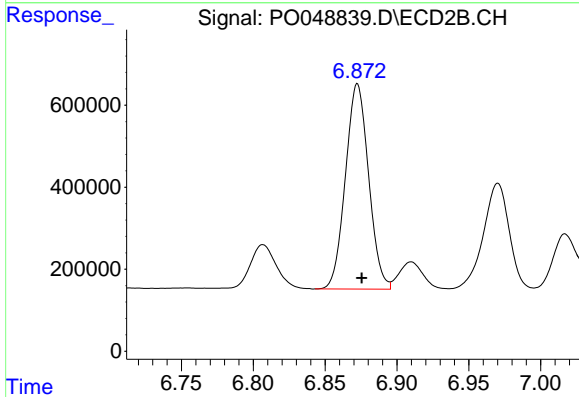
R.T.: 6.405 min
 Delta R.T.: -0.002 min
 Response: 7050071
 Conc: 594.22 ng/ml



#34 AR-1260-4

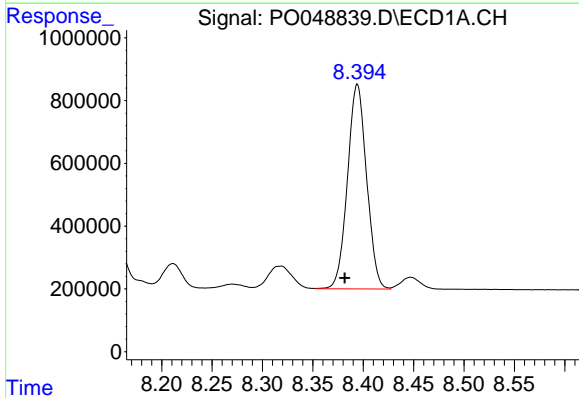
R.T.: 8.073 min
 Delta R.T.: 0.011 min
 Response: 4565198
 Conc: 531.89 ng/ml

Instrument :
 ECD_O
 ClientSampled :
 AR1660CCC500



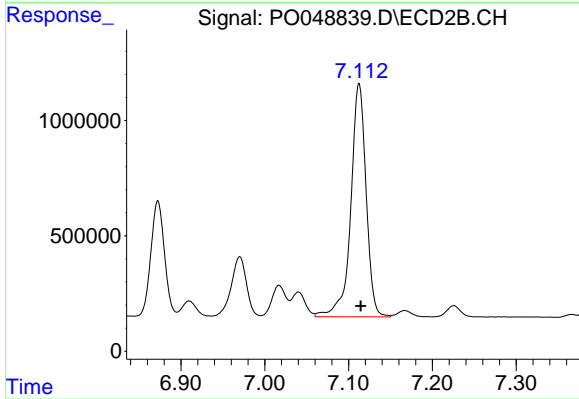
#34 AR-1260-4

R.T.: 6.873 min
 Delta R.T.: -0.003 min
 Response: 5621444
 Conc: 594.17 ng/ml



#35 AR-1260-5

R.T.: 8.394 min
 Delta R.T.: 0.013 min
 Response: 8599638
 Conc: 518.00 ng/ml



#35 AR-1260-5

R.T.: 7.113 min
 Delta R.T.: -0.002 min
 Response: 12828118
 Conc: 590.75 ng/ml