

Data Path : Z:\pestpcbsrv\HPCHEM1\ECD_0\Data\P0090718\
 Data File : P0048865.D
 Signal(s) : Signal #1: ECD1A.CH Signal #2: ECD2B.CH
 Acq On : 07 Sep 2018 23:17
 Operator : SM/SJ
 Sample : PB112678BL
 Misc :
 ALS Vial : 42 Sample Multiplier: 1

Instrument :
 ECD_0
 ClientSampleId :
 PB112678BL

Integration File signal 1: autoint1.e
 Integration File signal 2: autoint2.e
 Quant Time: Sep 08 01:16:00 2018
 Quant Method : Z:\pestpcbsrv\HPCHEM1\ECD_0\methods\P0090418.M
 Quant Title : GC EXTRACTABLES
 QLast Update : Thu Sep 06 03:44:31 2018
 Response via : Initial Calibration
 Integrator: ChemStation 6890 Scale Mode: Small noise peaks clipped

Volume Inj. : 2 µl
 Signal #1 Phase : ZB-MR1 Signal #2 Phase: ZB-MR2
 Signal #1 Info : 30Mx0.32mmx 0.50µ Signal #2 Info : 30M x 0.32mm x 0.25µm

Compound	RT#1	RT#2	Resp#1	Resp#2	ng/ml	ng/ml

System Monitoring Compounds						
1) SA Tetrachlo...	4.435	3.530	3919277	5319717	32.483	34.034
2) SA Decachlor...	10.167	8.467	3271374	3237028	23.446m	21.894

Target Compounds

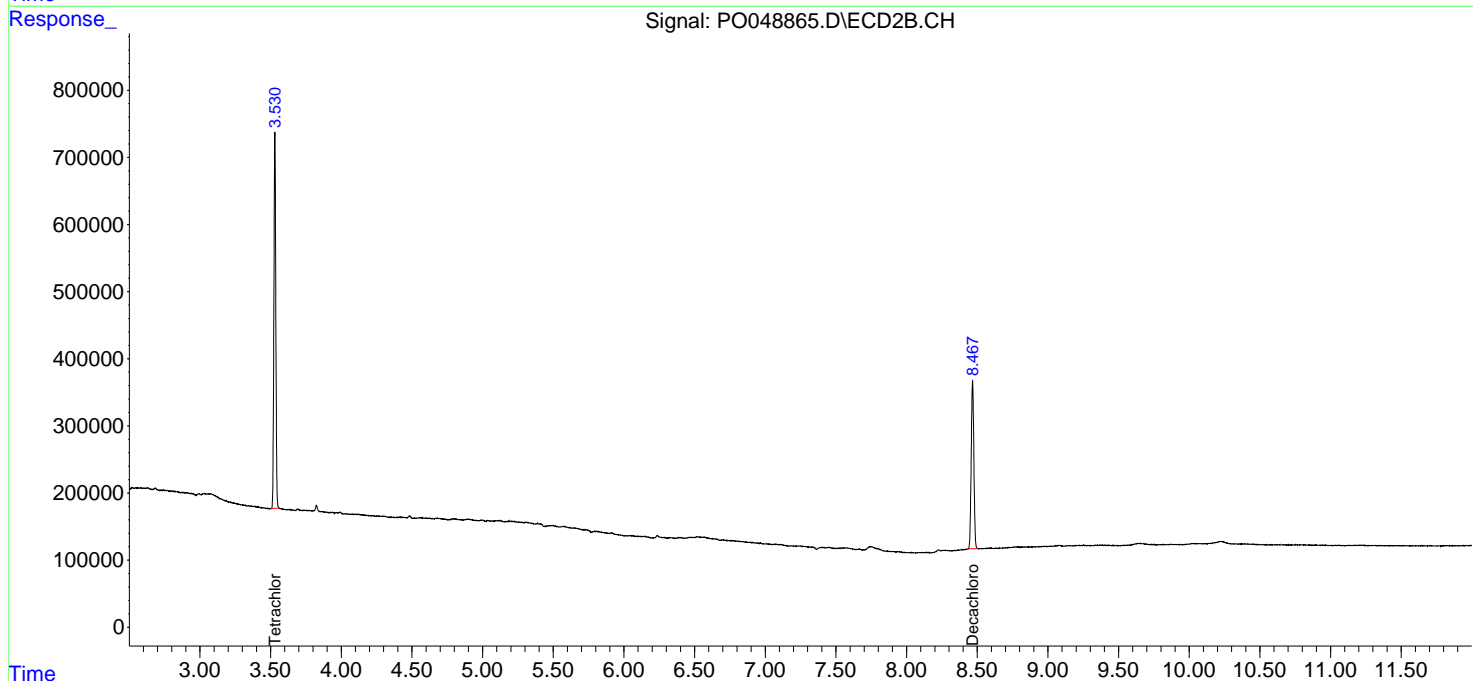
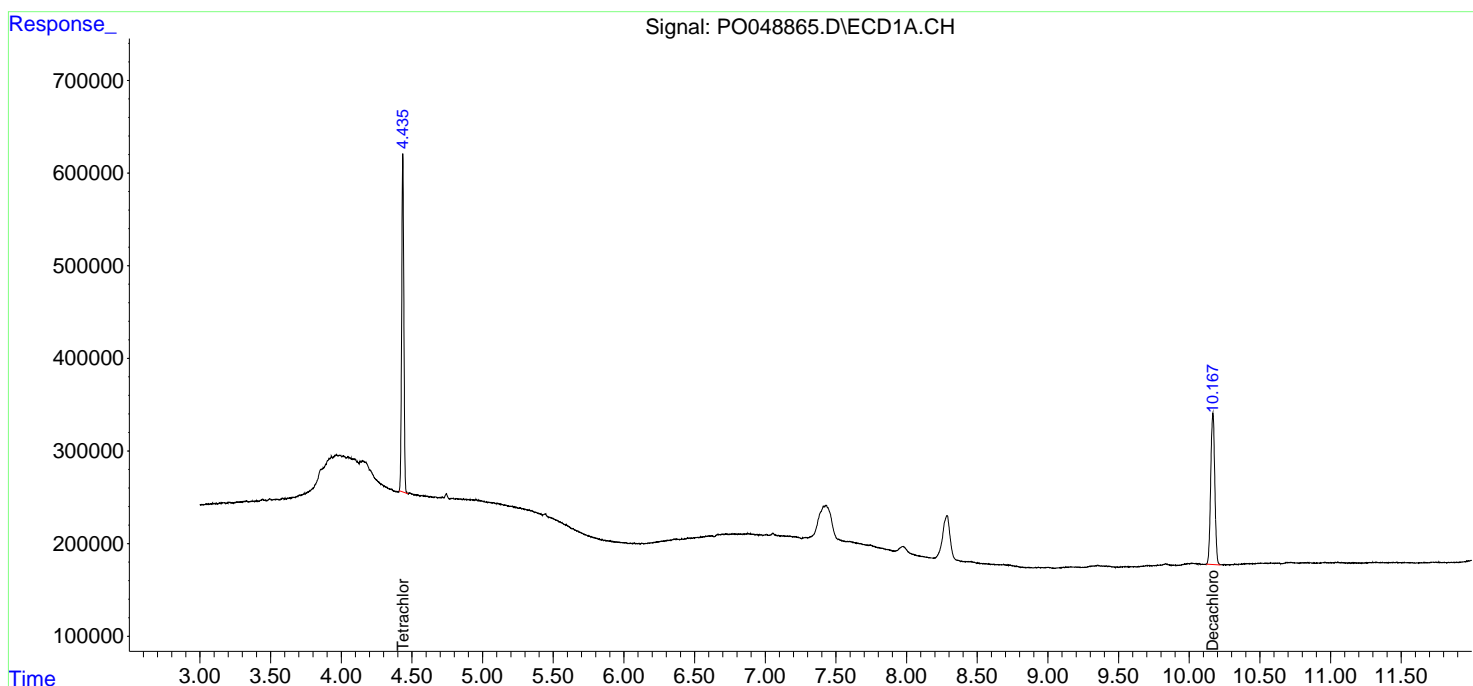
(f)=RT Delta > 1/2 Window (#)=Amounts differ by > 25% (m)=manual int.

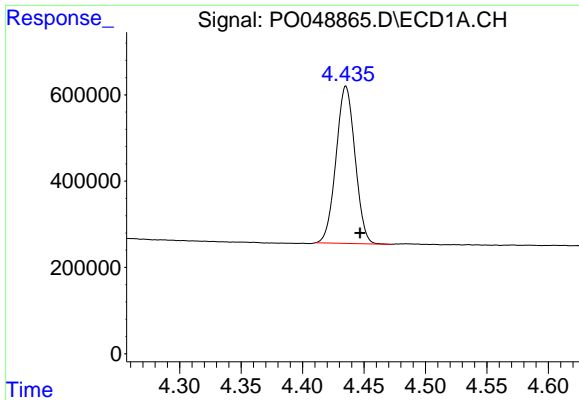
Data Path : Z:\pestpcbsrv\HPCHEM1\ECD_0\Data\P0090718\
 Data File : P0048865.D
 Signal(s) : Signal #1: ECD1A.CH Signal #2: ECD2B.CH
 Acq On : 07 Sep 2018 23:17
 Operator : SM/SJ
 Sample : PB112678BL
 Misc :
 ALS Vial : 42 Sample Multiplier: 1

Instrument :
 ECD_O
 ClientSampled :
 PB112678BL

Integration File signal 1: autoint1.e
 Integration File signal 2: autoint2.e
 Quant Time: Sep 08 01:16:00 2018
 Quant Method : Z:\pestpcbsrv\HPCHEM1\ECD_0\methods\P0090418.M
 Quant Title : GC EXTRACTABLES
 QLast Update : Thu Sep 06 03:44:31 2018
 Response via : Initial Calibration
 Integrator: ChemStation 6890 Scale Mode: Small noise peaks clipped

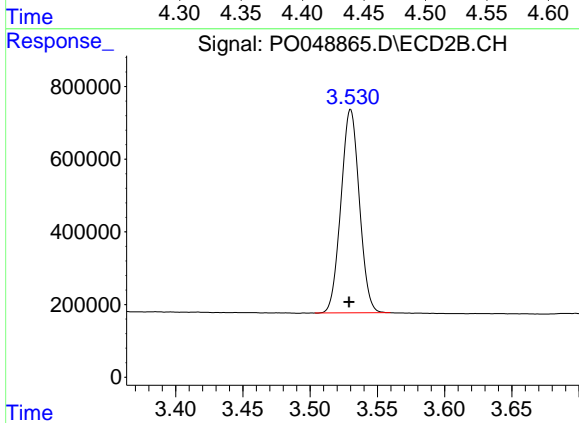
Volume Inj. : 2 µl
 Signal #1 Phase : ZB-MR1 Signal #2 Phase: ZB-MR2
 Signal #1 Info : 30Mx0.32mmx 0.50µ Signal #2 Info : 30M x 0.32mm x 0.25µm



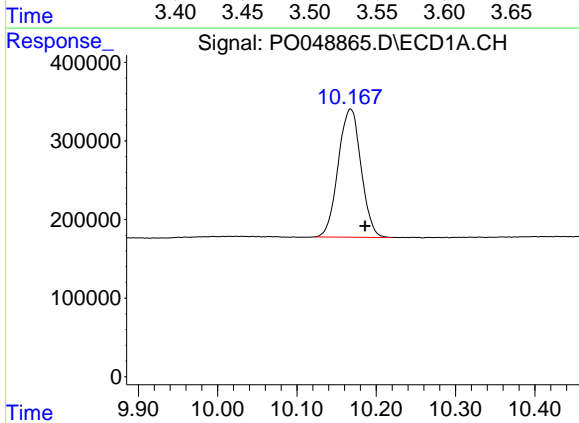


#1 Tetrachloro-m-xylene
 R.T.: 4.435 min
 Delta R.T.: -0.012 min
 Response: 3919277
 Conc: 32.48 ng/ml

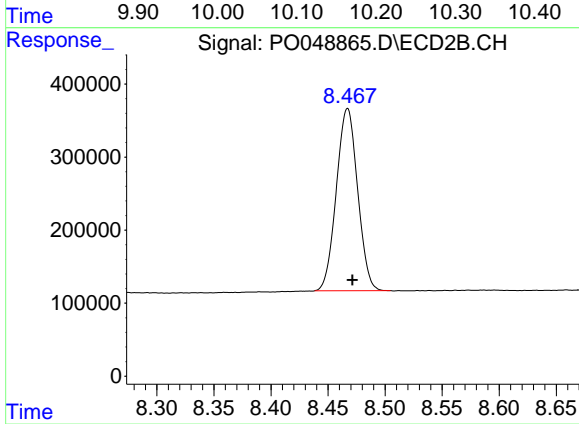
Instrument :
 ECD_O
 ClientSampled :
 PB112678BL



#1 Tetrachloro-m-xylene
 R.T.: 3.530 min
 Delta R.T.: 0.001 min
 Response: 5319717
 Conc: 34.03 ng/ml



#2 Decachlorobiphenyl
 R.T.: 10.167 min
 Delta R.T.: -0.019 min
 Response: 3271374
 Conc: 23.45 ng/ml m



#2 Decachlorobiphenyl
 R.T.: 8.467 min
 Delta R.T.: -0.004 min
 Response: 3237028
 Conc: 21.89 ng/ml