

Data Path : Z:\pestpcbsrv\HPCHEM1\ECD\_0\Data\P0090719\  
 Data File : P0060527.D  
 Signal(s) : Signal #1: ECD1A.CH Signal #2: ECD2B.CH  
 Acq On : 08 Sep 2019 10:55  
 Operator : SM/AJ  
 Sample : K4692-06  
 Misc :  
 ALS Vial : 44 Sample Multiplier: 1

Instrument :  
 ECD\_0  
 ClientSampled :

Integration File signal 1: autoint1.e  
 Integration File signal 2: autoint2.e  
 Quant Time: Sep 09 01:24:37 2019  
 Quant Method : Z:\pestpcbsrv\HPCHEM1\ECD\_0\methods\P0090719.M  
 Quant Title : GC EXTRACTABLES  
 QLast Update : Sun Sep 08 02:12:04 2019  
 Response via : Initial Calibration  
 Integrator: ChemStation 6890 Scale Mode: Small noise peaks clipped

Volume Inj. : 2 µl  
 Signal #1 Phase : ZB-MR1 Signal #2 Phase: ZB-MR2  
 Signal #1 Info : 30Mx0.32mmx 0.50µ Signal #2 Info : 30M x 0.32mm x 0.25µm

Compound	RT#1	RT#2	Resp#1	Resp#2	ng/ml	ng/ml
System Monitoring Compounds						
1) SA Tetrachlo...	4.369	3.536	968989	735693	23.353	23.952
2) SA Decachlor...	10.030	8.427	1016095	738370	19.262	19.946
Target Compounds						
3) L1 AR-1016-1	0.000	4.612	0	9335	N.D.	7.434 #
4) L1 AR-1016-2	0.000	4.612	0	9335	N.D.	5.343 #
5) L1 AR-1016-3	0.000	4.795	0	31578	N.D.	33.208 #
6) L1 AR-1016-4	5.689	4.824	8867	83774	7.213	101.647 #
7) L1 AR-1016-5	6.006	5.031	74928	21761	60.745	20.481 #
8) L2 AR-1221-1	0.000	3.760	0	25866	N.D.	66.403 #
9) L2 AR-1221-2	4.673	3.825	13112	26553	37.562	88.777 #
10) L2 AR-1221-3	4.766	3.944	29226	172834	25.589	188.884 #
11) L3 AR-1232-1	4.766	3.944	29226	172834	23.655	176.783 #
12) L3 AR-1232-2	0.000	4.612	0	9335	N.D.	8.859 #
13) L3 AR-1232-3	0.000	4.795	0	31578	N.D.	55.763 #
14) L3 AR-1232-4	5.689	4.864	8867	14929	12.127	27.452 #
15) L3 AR-1232-5	5.804	5.031	89227	21761	170.667	36.472 #
16) L4 AR-1242-1	0.000	4.577	0	12325	N.D.	13.407 #
17) L4 AR-1242-2	0.000	4.612	0	9335	N.D.	7.278 #
18) L4 AR-1242-3	0.000	4.795	0	31578	N.D.	44.226 #
19) L4 AR-1242-4	5.689	4.864	8867	14929	9.850	19.912 #
20) L4 AR-1242-5	6.456	5.376	56334	264961	51.683	271.361 #
21) L5 AR-1248-1	0.000	4.577	0	12325	N.D.	17.051 #
22) L5 AR-1248-2	5.804	4.824	89227	83774	66.602	85.542 #
23) L5 AR-1248-3	6.006	4.864	74928	14929	49.993	14.628 #
24) L5 AR-1248-4	6.410	5.031	74615	21761	42.424	17.897 #
25) L5 AR-1248-5	6.456	5.401	56334	29949	33.675	24.616 #
26) L6 AR-1254-1	6.384	5.376	296185	264961	162.407	139.647
27) L6 AR-1254-2	6.602	5.520	900291	270470	310.642	158.265 #
28) L6 AR-1254-3	6.967	5.916	642419	727630	201.439	259.444 #
29) L6 AR-1254-4	7.252	6.139	334641	198825	139.356	111.291
30) L6 AR-1254-5	7.667	6.550	1247620	1058593	458.637	403.426
31) L7 AR-1260-1	7.128	6.043	1111849	628415	444.792	305.588 #
32) L7 AR-1260-2	7.384	6.231	764852	810928	246.137	323.882 #
33) L7 AR-1260-3	7.742	6.379	595513	536916	238.071	231.100
34) L7 AR-1260-4	7.966	6.845	857546	446687	289.637	219.929
35) L7 AR-1260-5	8.281	7.083	1444744	1640315	257.217	358.084 #
36) L8 AR-1262-1	7.742	6.589	595513	520556	177.326	195.783
37) L8 AR-1262-2	8.281	7.083	1444744	1640315	246.764	361.332 #
38) L8 AR-1262-3	8.599	7.364	1027840	385633	256.857	203.436
39) L8 AR-1262-4	8.671	7.426	292655	904931	96.370	263.884 #
40) L8 AR-1262-5	9.309	7.915	397671	338057	198.255	216.210
41) L9 AR-1268-1	8.599	7.364	1027840	385633	148.891	75.930 #

Data Path : Z:\pestpcbsrv\HPCHEM1\ECD\_0\Data\P0090719\  
 Data File : P0060527.D  
 Signal(s) : Signal #1: ECD1A.CH Signal #2: ECD2B.CH  
 Acq On : 08 Sep 2019 10:55  
 Operator : SM/AJ  
 Sample : K4692-06  
 Misc :  
 ALS Vial : 44 Sample Multiplier: 1

Instrument :  
 ECD\_0  
 ClientSampleId :

Integration File signal 1: autoint1.e  
 Integration File signal 2: autoint2.e  
 Quant Time: Sep 09 01:24:37 2019  
 Quant Method : Z:\pestpcbsrv\HPCHEM1\ECD\_0\methods\P0090719.M  
 Quant Title : GC EXTRACTABLES  
 QLast Update : Sun Sep 08 02:12:04 2019  
 Response via : Initial Calibration  
 Integrator: ChemStation 6890 Scale Mode: Small noise peaks clipped

Volume Inj. : 2 µl  
 Signal #1 Phase : ZB-MR1 Signal #2 Phase: ZB-MR2  
 Signal #1 Info : 30Mx0.32mmx 0.50µ Signal #2 Info : 30M x 0.32mm x 0.25µm

	Compound	RT#1	RT#2	Resp#1	Resp#2	ng/ml	ng/ml
42)	L9 AR-1268-2	8.671	7.426	292655	904931	45.506	194.816 #
43)	L9 AR-1268-3	8.895	7.624	93180	177794	17.577	45.217 #
44)	L9 AR-1268-4	9.309	7.915	397671	338057	179.251	198.820
45)	L9 AR-1268-5	9.707	8.189	319067	251436	19.472	22.440

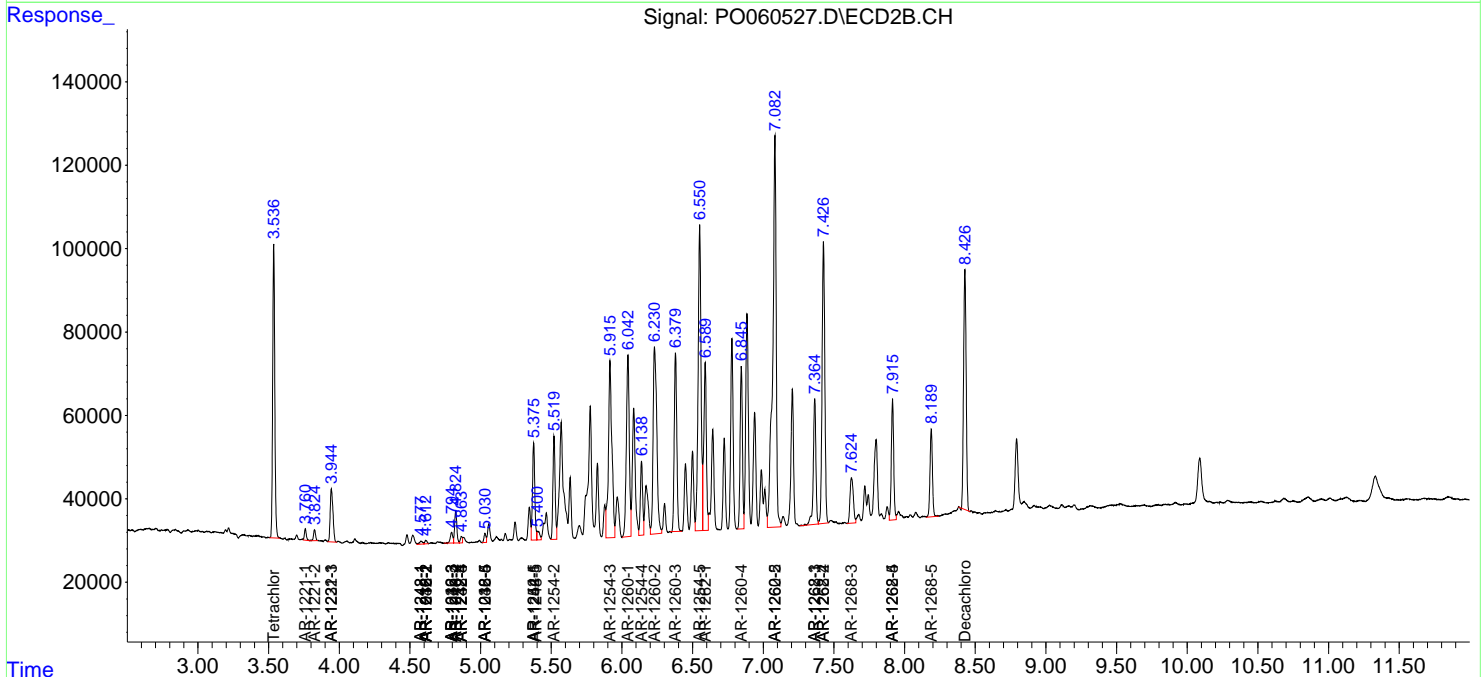
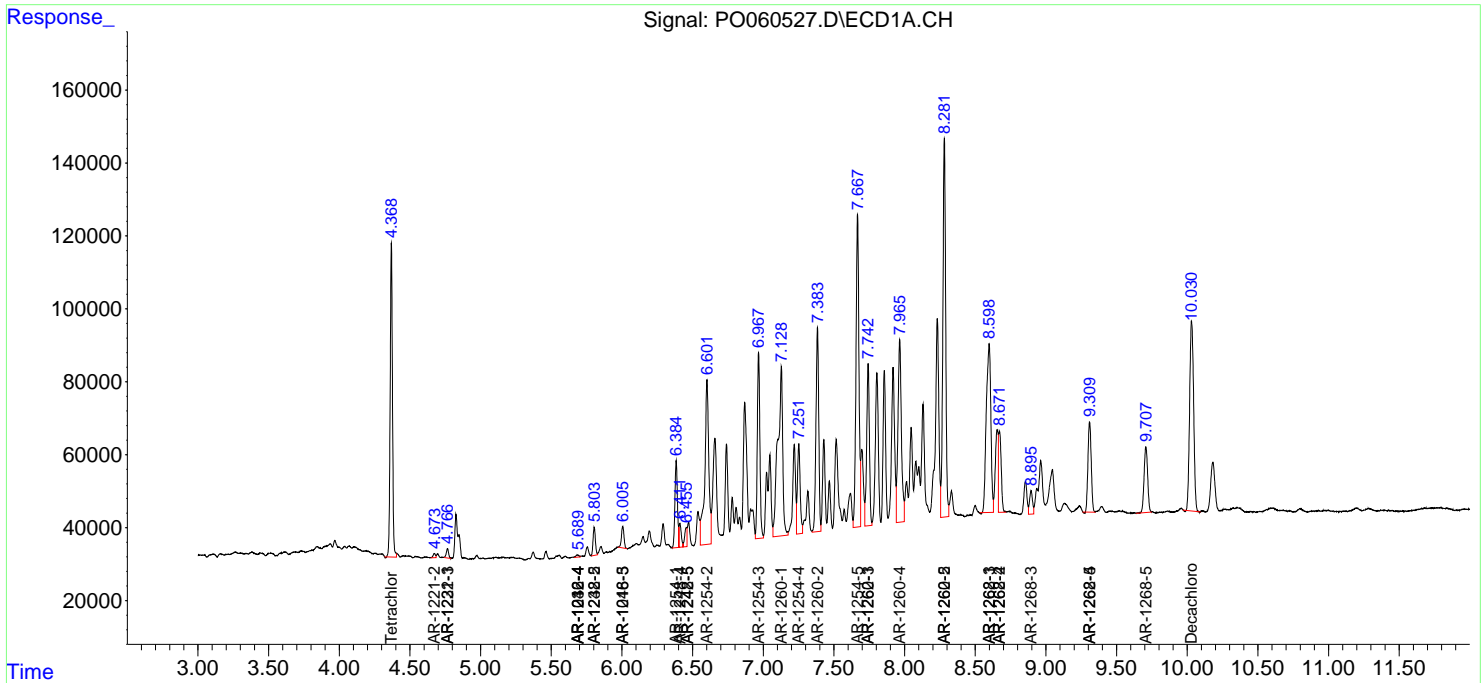
(f)=RT Delta > 1/2 Window (#)=Amounts differ by > 25% (m)=manual int.

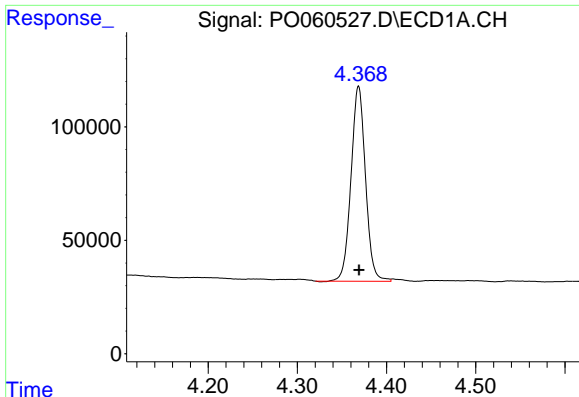
Data Path : Z:\pestpcbsrv\HPCHEM1\ECD\_O\Data\P0090719\  
 Data File : P0060527.D  
 Signal(s) : Signal #1: ECD1A.CH Signal #2: ECD2B.CH  
 Acq On : 08 Sep 2019 10:55  
 Operator : SM/AJ  
 Sample : K4692-06  
 Misc :  
 ALS Vial : 44 Sample Multiplier: 1

Instrument :  
 ECD\_O  
 ClientSampled :

Integration File signal 1: autoint1.e  
 Integration File signal 2: autoint2.e  
 Quant Time: Sep 09 01:24:37 2019  
 Quant Method : Z:\pestpcbsrv\HPCHEM1\ECD\_O\methods\P0090719.M  
 Quant Title : GC EXTRACTABLES  
 QLast Update : Sun Sep 08 02:12:04 2019  
 Response via : Initial Calibration  
 Integrator: ChemStation 6890 Scale Mode: Small noise peaks clipped

Volume Inj. : 2 µl  
 Signal #1 Phase : ZB-MR1 Signal #2 Phase: ZB-MR2  
 Signal #1 Info : 30Mx0.32mmx 0.50µ Signal #2 Info : 30M x 0.32mm x 0.25µm

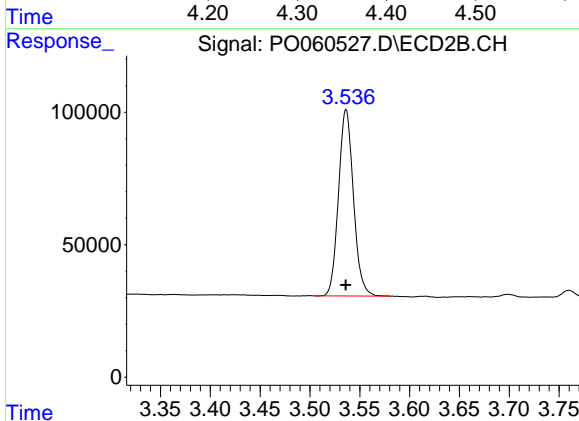




#1 Tetrachloro-m-xylene

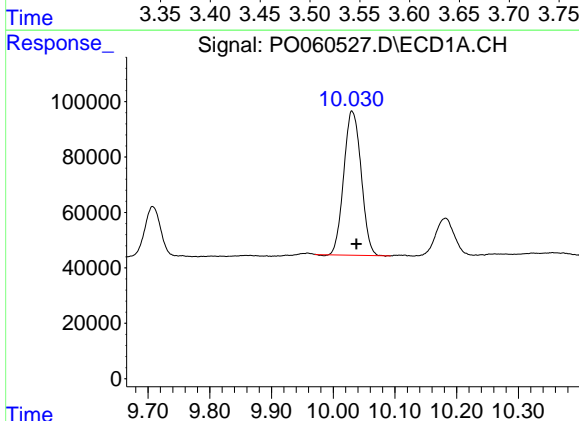
R.T.: 4.369 min  
Delta R.T.: 0.000 min  
Response: 968989  
Conc: 23.35 ng/ml

Instrument :  
ECD\_O  
ClientSampleId :



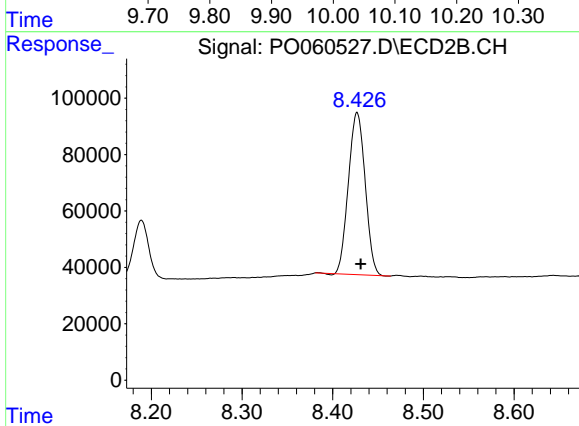
#1 Tetrachloro-m-xylene

R.T.: 3.536 min  
Delta R.T.: 0.000 min  
Response: 735693  
Conc: 23.95 ng/ml



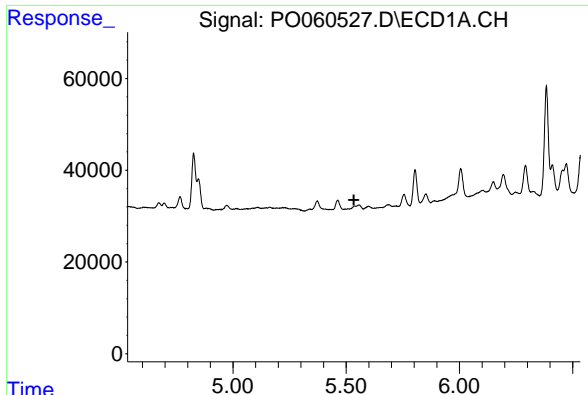
#2 Decachlorobiphenyl

R.T.: 10.030 min  
Delta R.T.: -0.007 min  
Response: 1016095  
Conc: 19.26 ng/ml



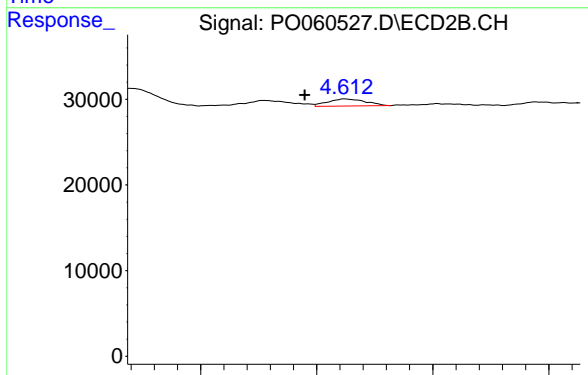
#2 Decachlorobiphenyl

R.T.: 8.427 min  
Delta R.T.: -0.004 min  
Response: 738370  
Conc: 19.95 ng/ml

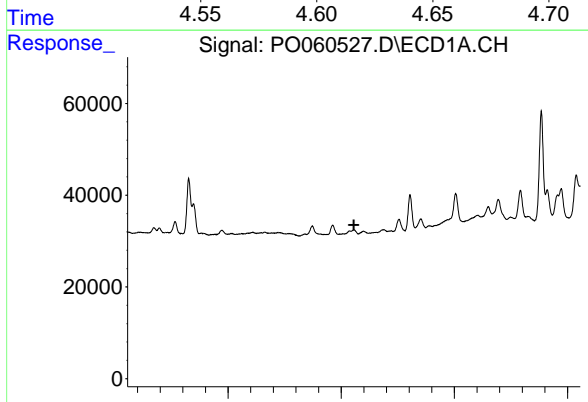


#3 AR-1016-1  
 R.T.: 0.000 min  
 Exp R.T. : 5.534 min  
 Response: 0  
 Conc: N.D.

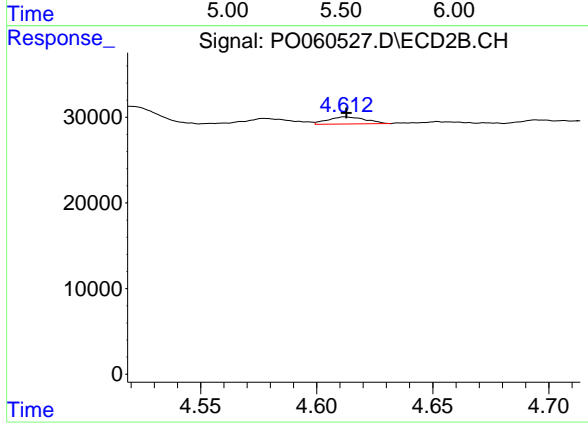
Instrument :  
 ECD\_O  
 ClientSampled :



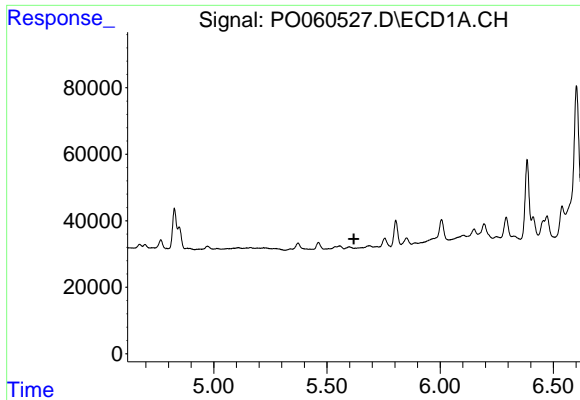
#3 AR-1016-1  
 R.T.: 4.612 min  
 Delta R.T.: 0.017 min  
 Response: 9335  
 Conc: 7.43 ng/ml



#4 AR-1016-2  
 R.T.: 0.000 min  
 Exp R.T. : 5.556 min  
 Response: 0  
 Conc: N.D.



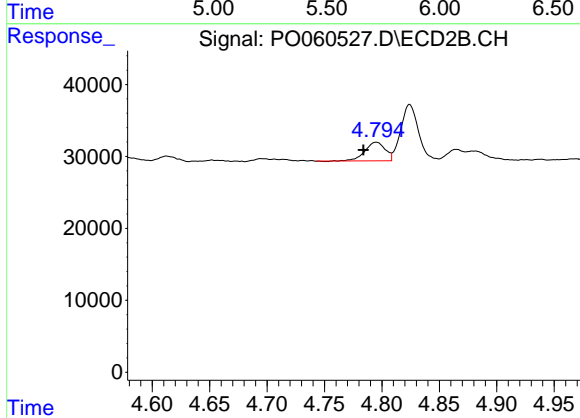
#4 AR-1016-2  
 R.T.: 4.612 min  
 Delta R.T.: 0.000 min  
 Response: 9335  
 Conc: 5.34 ng/ml



#5 AR-1016-3

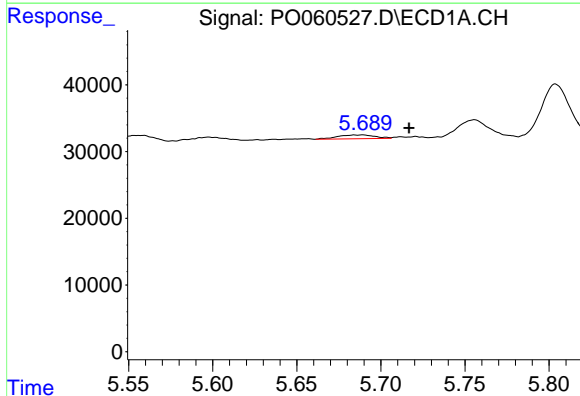
R.T.: 0.000 min  
 Exp R.T.: 5.619 min  
 Response: 0  
 Conc: N.D.

Instrument :  
 ECD\_O  
 ClientSampleId :



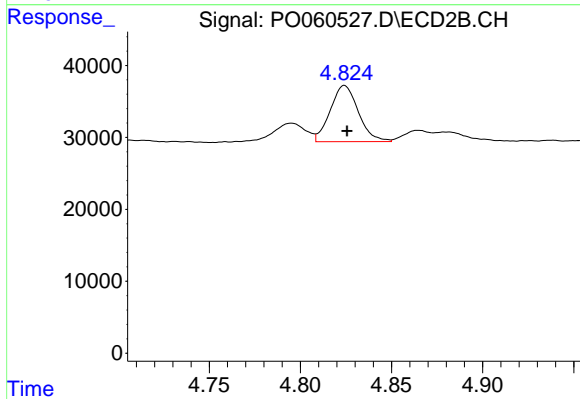
#5 AR-1016-3

R.T.: 4.795 min  
 Delta R.T.: 0.011 min  
 Response: 31578  
 Conc: 33.21 ng/ml



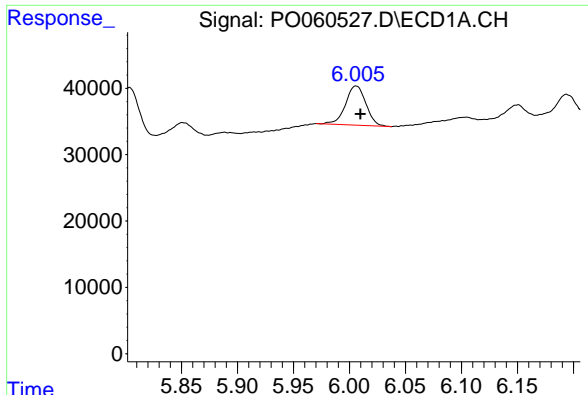
#6 AR-1016-4

R.T.: 5.689 min  
 Delta R.T.: -0.027 min  
 Response: 8867  
 Conc: 7.21 ng/ml



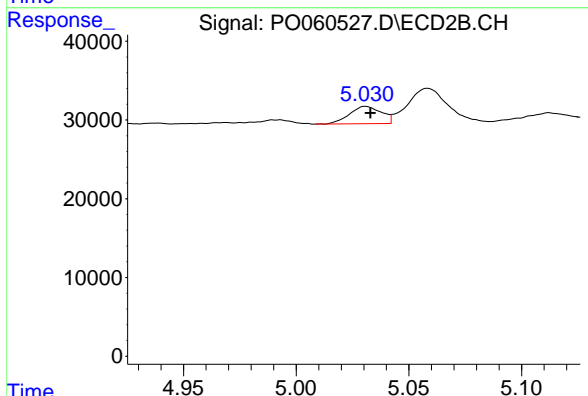
#6 AR-1016-4

R.T.: 4.824 min  
 Delta R.T.: -0.001 min  
 Response: 83774  
 Conc: 101.65 ng/ml

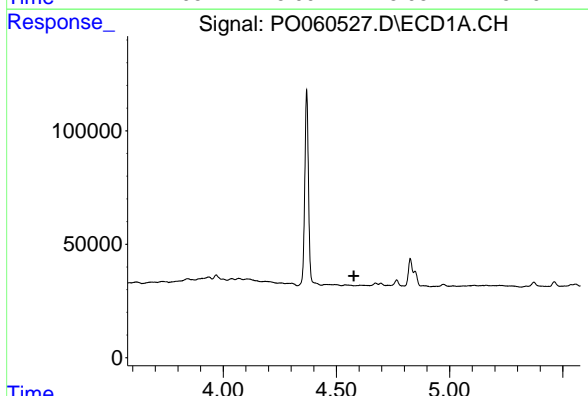


#7 AR-1016-5  
 R.T.: 6.006 min  
 Delta R.T.: -0.004 min  
 Response: 74928  
 Conc: 60.75 ng/ml

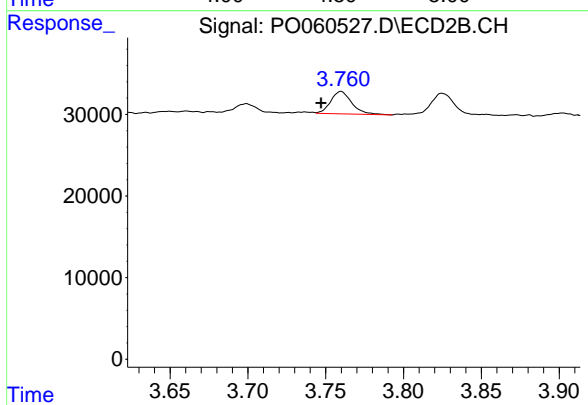
Instrument :  
 ECD\_O  
 ClientSampleId :



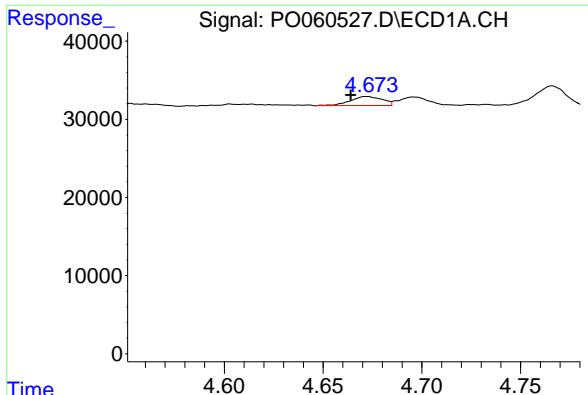
#7 AR-1016-5  
 R.T.: 5.031 min  
 Delta R.T.: -0.002 min  
 Response: 21761  
 Conc: 20.48 ng/ml



#8 AR-1221-1  
 R.T.: 0.000 min  
 Exp R.T. : 4.577 min  
 Response: 0  
 Conc: N.D.

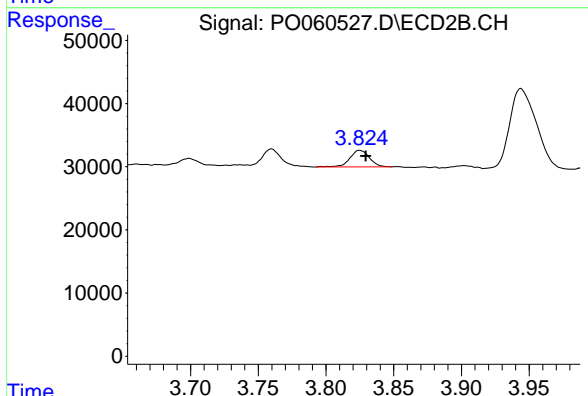


#8 AR-1221-1  
 R.T.: 3.760 min  
 Delta R.T.: 0.013 min  
 Response: 25866  
 Conc: 66.40 ng/ml

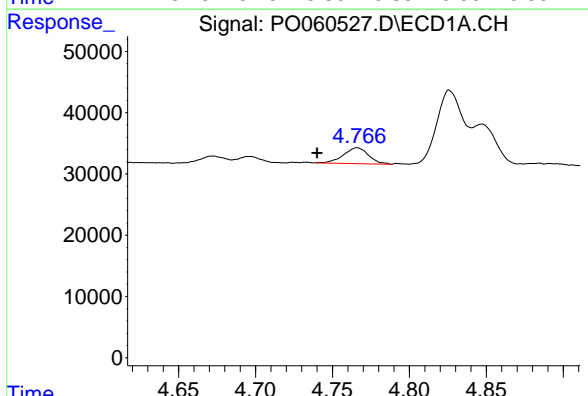


#9 AR-1221-2  
 R.T.: 4.673 min  
 Delta R.T.: 0.009 min  
 Response: 13112  
 Conc: 37.56 ng/ml

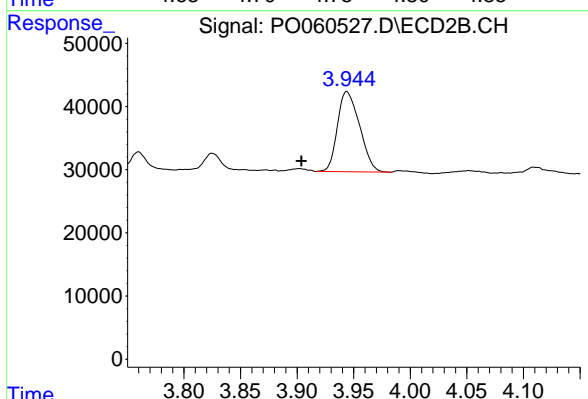
Instrument :  
 ECD\_O  
 ClientSampleId :



#9 AR-1221-2  
 R.T.: 3.825 min  
 Delta R.T.: -0.005 min  
 Response: 26553  
 Conc: 88.78 ng/ml

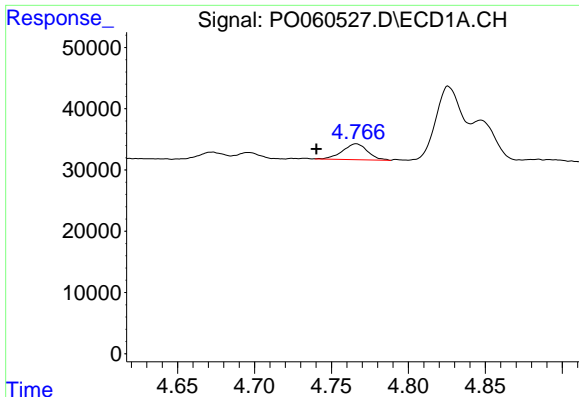


#10 AR-1221-3  
 R.T.: 4.766 min  
 Delta R.T.: 0.026 min  
 Response: 29226  
 Conc: 25.59 ng/ml



#10 AR-1221-3  
 R.T.: 3.944 min  
 Delta R.T.: 0.040 min  
 Response: 172834  
 Conc: 188.88 ng/ml

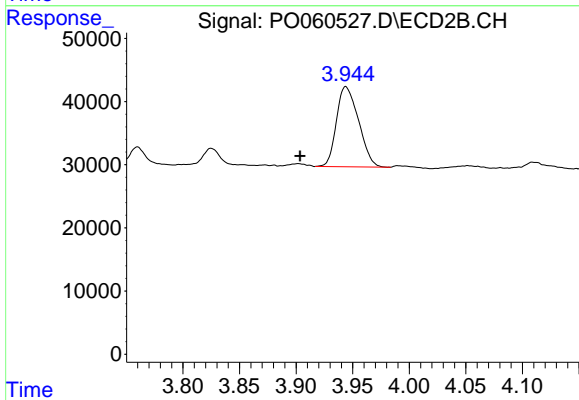




#11 AR-1232-1

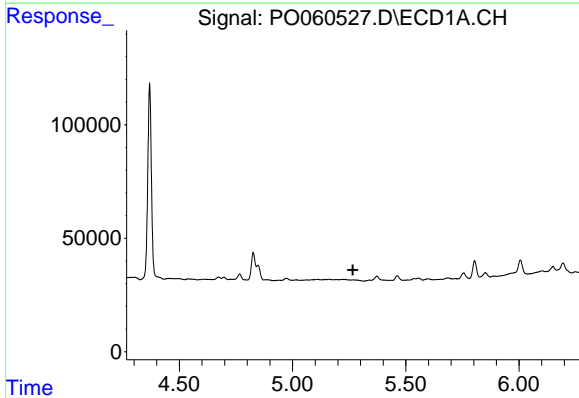
R.T.: 4.766 min  
 Delta R.T.: 0.026 min  
 Response: 29226  
 Conc: 23.66 ng/ml

Instrument :  
 ECD\_O  
 ClientSampleId :



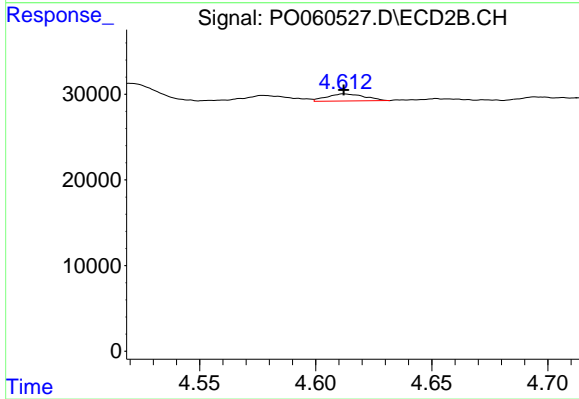
#11 AR-1232-1

R.T.: 3.944 min  
 Delta R.T.: 0.040 min  
 Response: 172834  
 Conc: 176.78 ng/ml



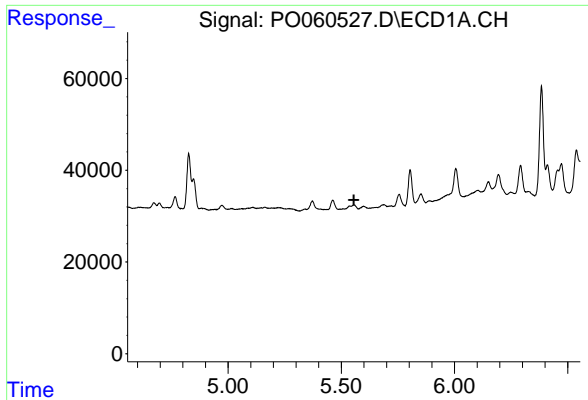
#12 AR-1232-2

R.T.: 0.000 min  
 Exp R.T. : 5.266 min  
 Response: 0  
 Conc: N.D.



#12 AR-1232-2

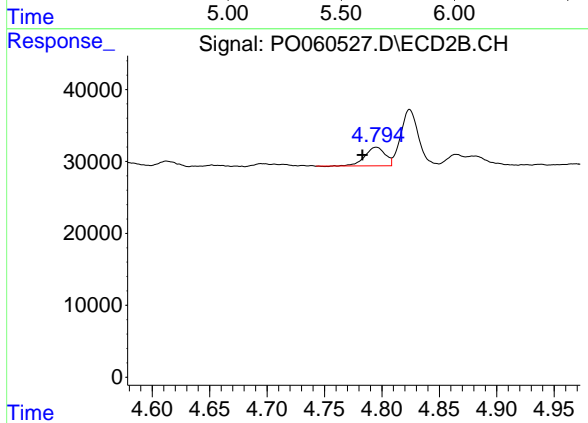
R.T.: 4.612 min  
 Delta R.T.: 0.000 min  
 Response: 9335  
 Conc: 8.86 ng/ml



#13 AR-1232-3

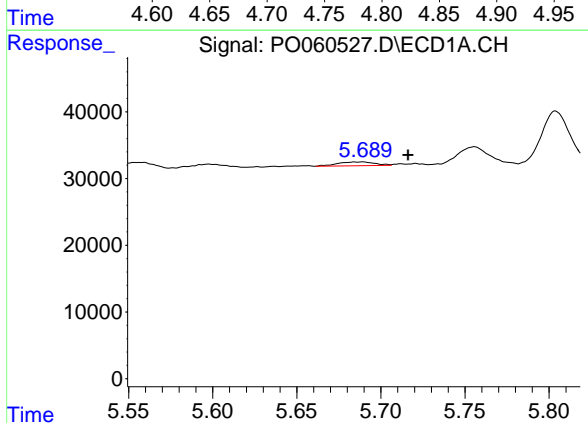
R.T.: 0.000 min  
 Exp R.T.: 5.556 min  
 Response: 0  
 Conc: N.D.

Instrument :  
 ECD\_O  
 ClientSampled :



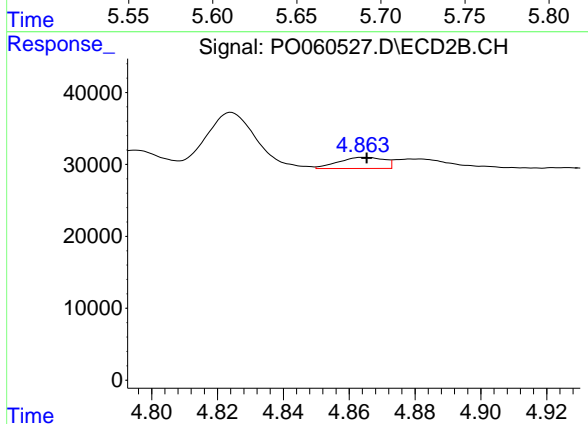
#13 AR-1232-3

R.T.: 4.795 min  
 Delta R.T.: 0.012 min  
 Response: 31578  
 Conc: 55.76 ng/ml



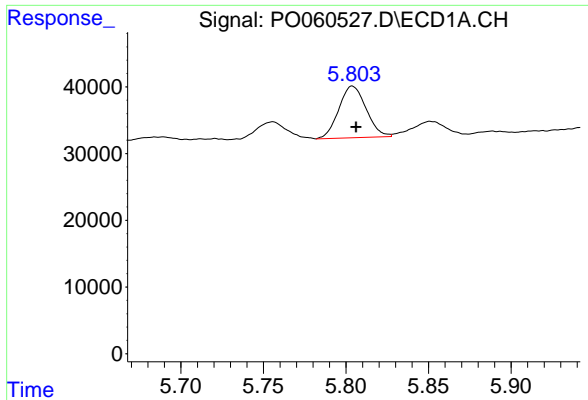
#14 AR-1232-4

R.T.: 5.689 min  
 Delta R.T.: -0.027 min  
 Response: 8867  
 Conc: 12.13 ng/ml



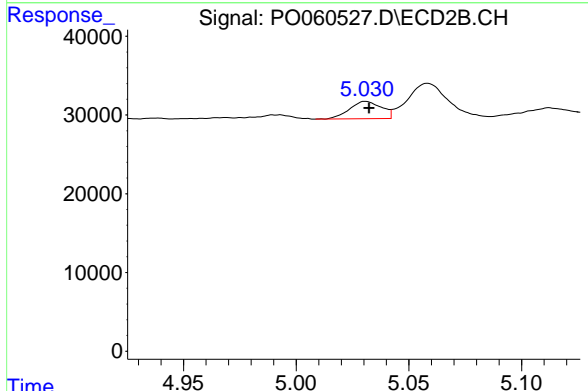
#14 AR-1232-4

R.T.: 4.864 min  
 Delta R.T.: -0.001 min  
 Response: 14929  
 Conc: 27.45 ng/ml

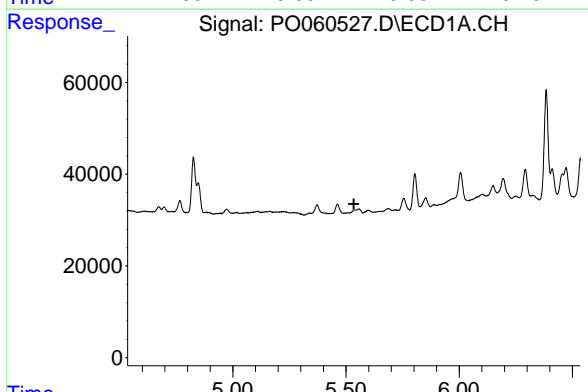


#15 AR-1232-5  
 R.T.: 5.804 min  
 Delta R.T.: -0.002 min  
 Response: 89227  
 Conc: 170.67 ng/ml

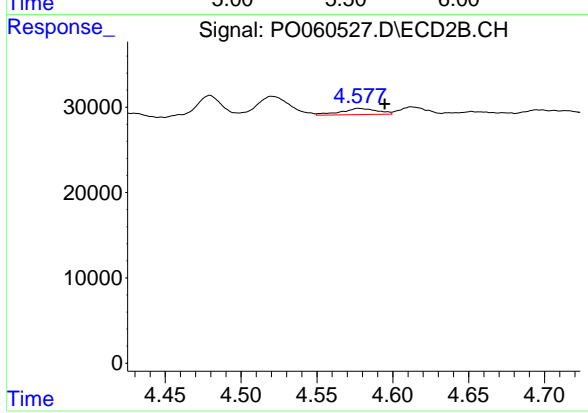
Instrument :  
 ECD\_O  
 ClientSampled :



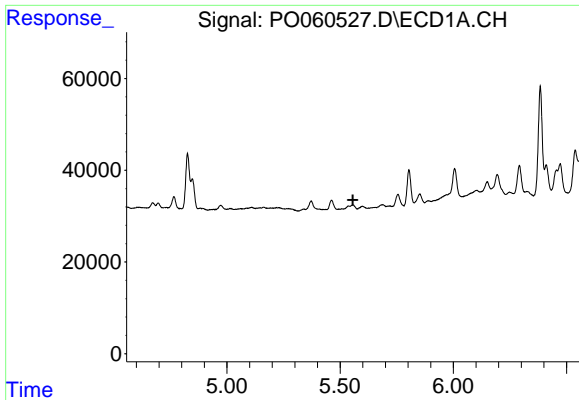
#15 AR-1232-5  
 R.T.: 5.031 min  
 Delta R.T.: -0.001 min  
 Response: 21761  
 Conc: 36.47 ng/ml



#16 AR-1242-1  
 R.T.: 0.000 min  
 Exp R.T. : 5.535 min  
 Response: 0  
 Conc: N.D.



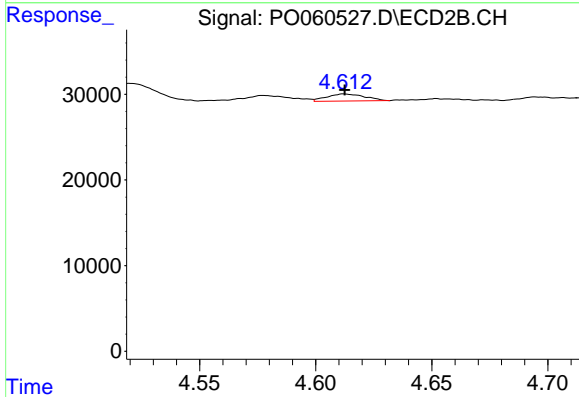
#16 AR-1242-1  
 R.T.: 4.577 min  
 Delta R.T.: -0.018 min  
 Response: 12325  
 Conc: 13.41 ng/ml



#17 AR-1242-2

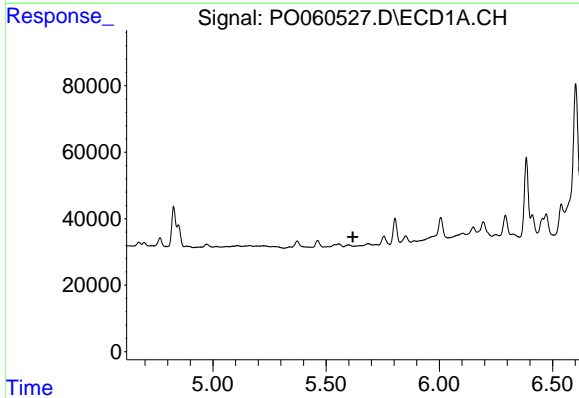
R.T.: 0.000 min  
 Exp R.T. : 5.556 min  
 Response: 0  
 Conc: N.D.

Instrument :  
 ECD\_O  
 ClientSampleId :



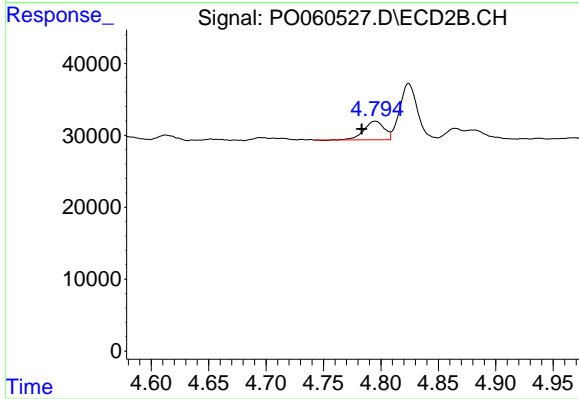
#17 AR-1242-2

R.T.: 4.612 min  
 Delta R.T.: 0.000 min  
 Response: 9335  
 Conc: 7.28 ng/ml



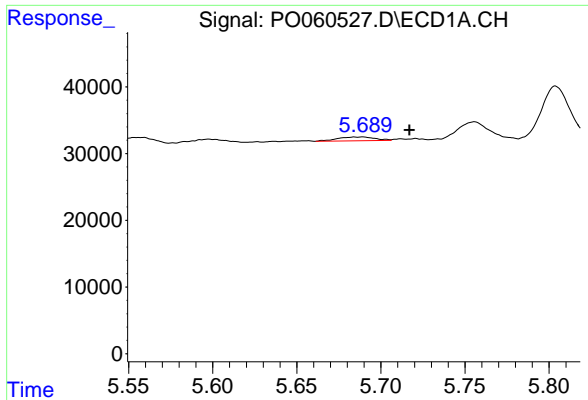
#18 AR-1242-3

R.T.: 0.000 min  
 Exp R.T. : 5.618 min  
 Response: 0  
 Conc: N.D.



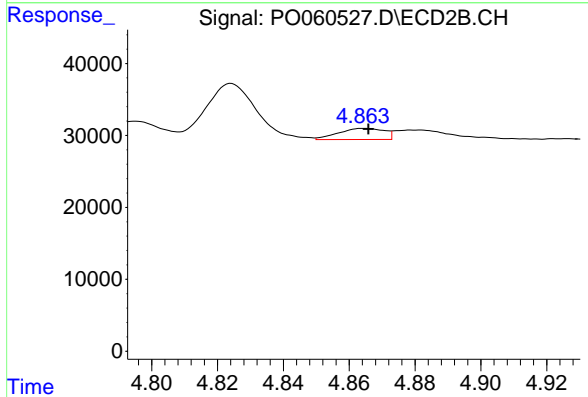
#18 AR-1242-3

R.T.: 4.795 min  
 Delta R.T.: 0.012 min  
 Response: 31578  
 Conc: 44.23 ng/ml

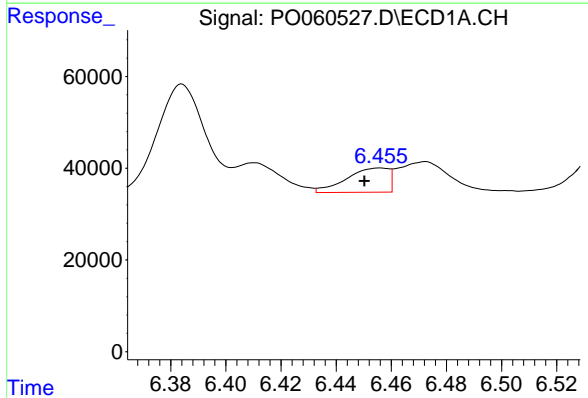


#19 AR-1242-4  
 R.T.: 5.689 min  
 Delta R.T.: -0.027 min  
 Response: 8867  
 Conc: 9.85 ng/ml

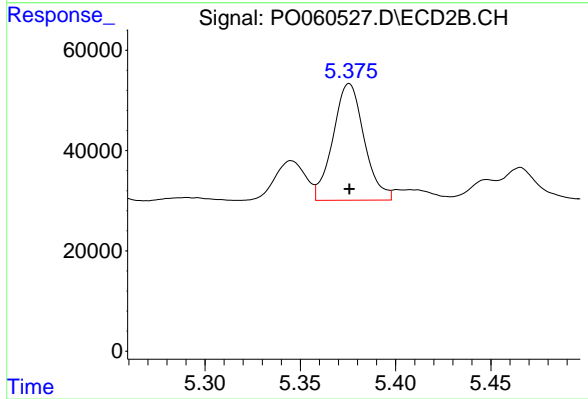
Instrument :  
 ECD\_O  
 ClientSampleId :



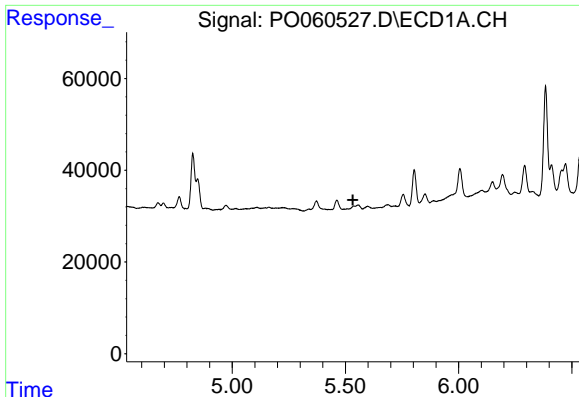
#19 AR-1242-4  
 R.T.: 4.864 min  
 Delta R.T.: -0.002 min  
 Response: 14929  
 Conc: 19.91 ng/ml



#20 AR-1242-5  
 R.T.: 6.456 min  
 Delta R.T.: 0.006 min  
 Response: 56334  
 Conc: 51.68 ng/ml



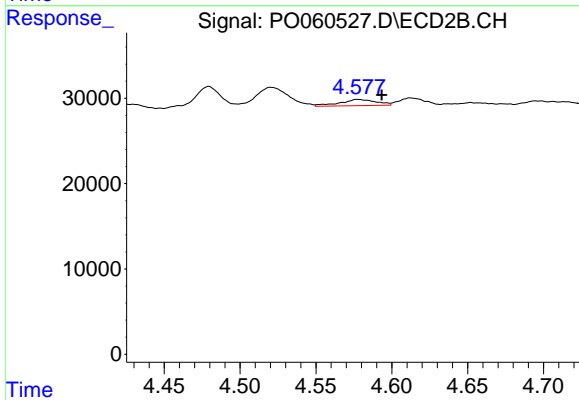
#20 AR-1242-5  
 R.T.: 5.376 min  
 Delta R.T.: 0.000 min  
 Response: 264961  
 Conc: 271.36 ng/ml



#21 AR-1248-1

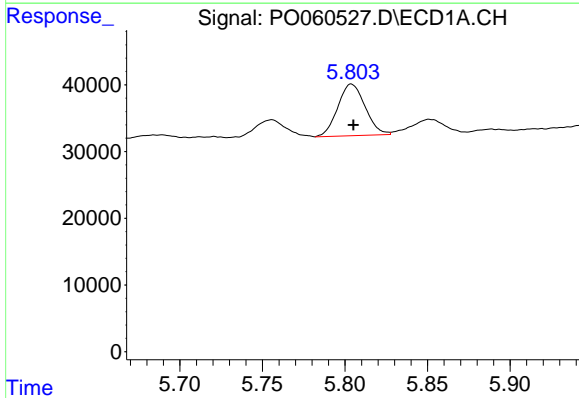
R.T.: 0.000 min  
 Exp R.T.: 5.533 min  
 Response: 0  
 Conc: N.D.

Instrument :  
 ECD\_O  
 ClientSampled :



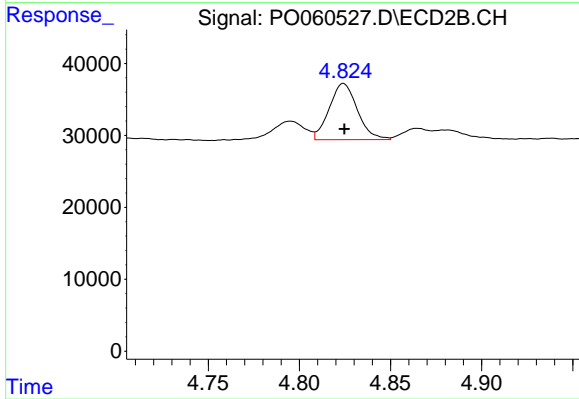
#21 AR-1248-1

R.T.: 4.577 min  
 Delta R.T.: -0.016 min  
 Response: 12325  
 Conc: 17.05 ng/ml



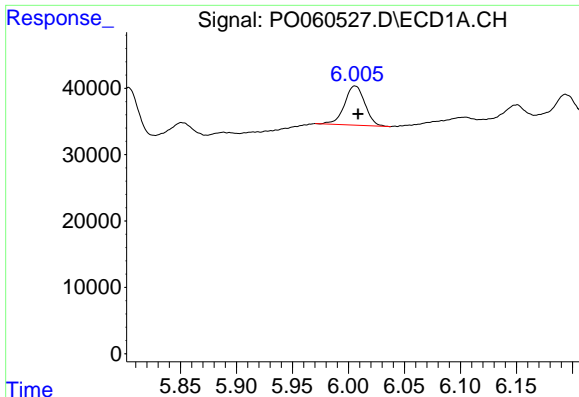
#22 AR-1248-2

R.T.: 5.804 min  
 Delta R.T.: -0.001 min  
 Response: 89227  
 Conc: 66.60 ng/ml



#22 AR-1248-2

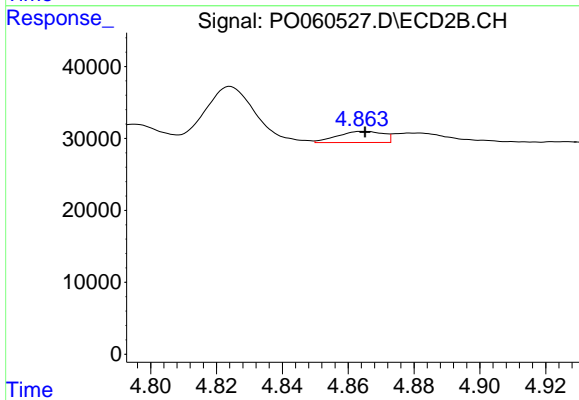
R.T.: 4.824 min  
 Delta R.T.: 0.000 min  
 Response: 83774  
 Conc: 85.54 ng/ml



#23 AR-1248-3

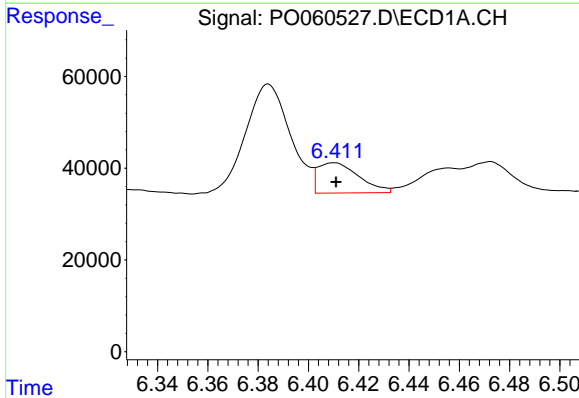
R.T.: 6.006 min  
 Delta R.T.: -0.003 min  
 Response: 74928  
 Conc: 49.99 ng/ml

Instrument :  
 ECD\_O  
 ClientSampleId :



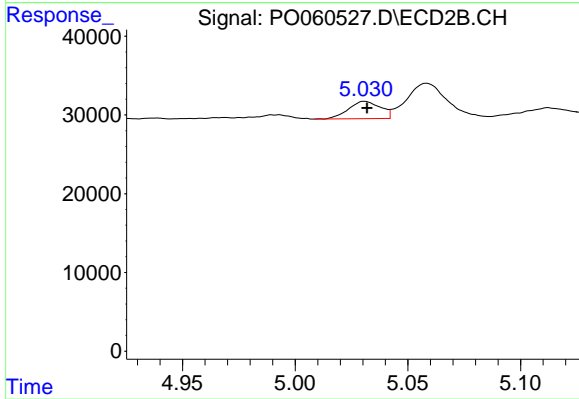
#23 AR-1248-3

R.T.: 4.864 min  
 Delta R.T.: 0.000 min  
 Response: 14929  
 Conc: 14.63 ng/ml



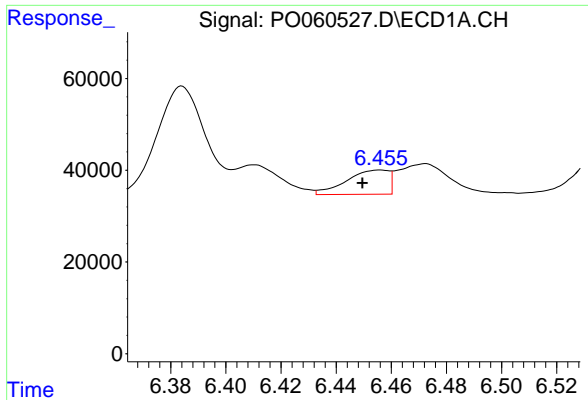
#24 AR-1248-4

R.T.: 6.410 min  
 Delta R.T.: 0.000 min  
 Response: 74615  
 Conc: 42.42 ng/ml



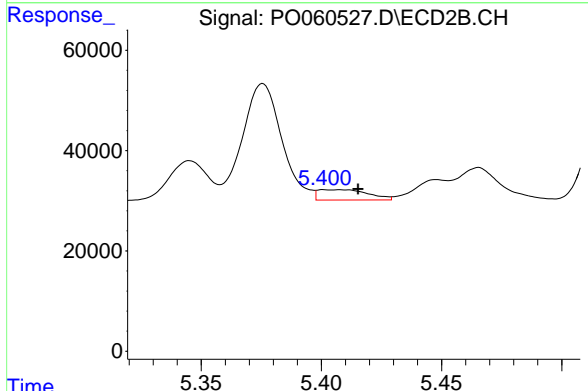
#24 AR-1248-4

R.T.: 5.031 min  
 Delta R.T.: -0.001 min  
 Response: 21761  
 Conc: 17.90 ng/ml

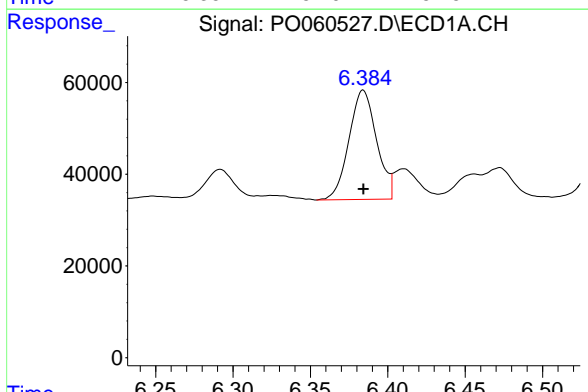


#25 AR-1248-5  
 R.T.: 6.456 min  
 Delta R.T.: 0.006 min  
 Response: 56334  
 Conc: 33.68 ng/ml

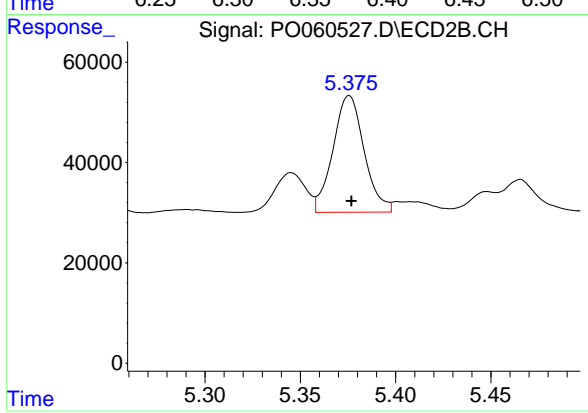
Instrument :  
 ECD\_O  
 ClientSampleId :



#25 AR-1248-5  
 R.T.: 5.401 min  
 Delta R.T.: -0.014 min  
 Response: 29949  
 Conc: 24.62 ng/ml

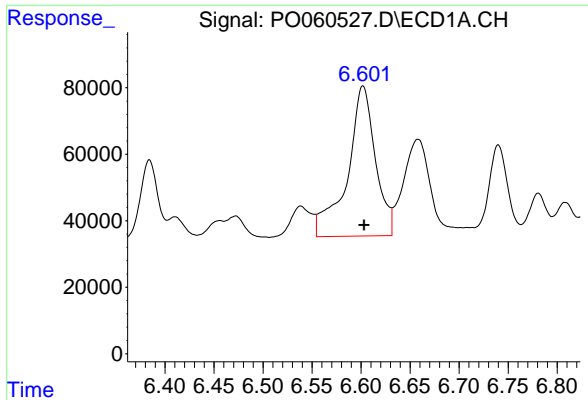


#26 AR-1254-1  
 R.T.: 6.384 min  
 Delta R.T.: 0.000 min  
 Response: 296185  
 Conc: 162.41 ng/ml



#26 AR-1254-1  
 R.T.: 5.376 min  
 Delta R.T.: -0.001 min  
 Response: 264961  
 Conc: 139.65 ng/ml

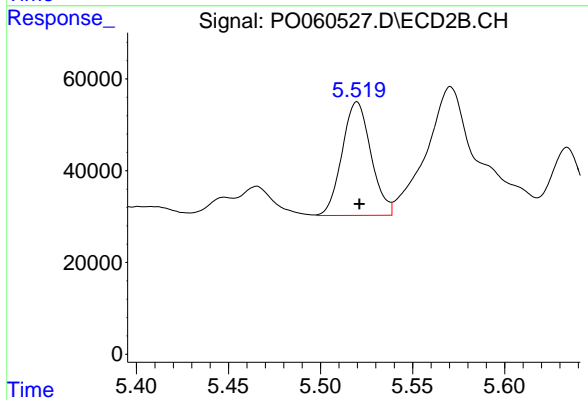




#27 AR-1254-2

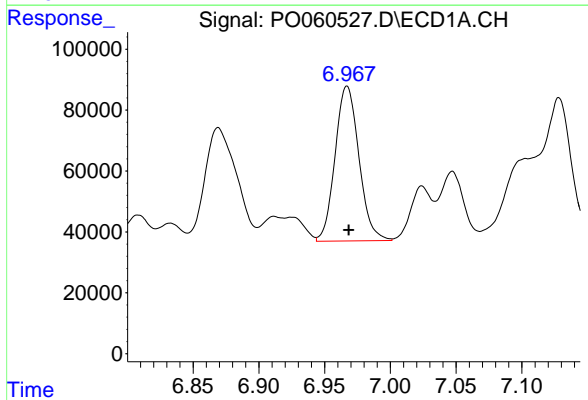
R.T.: 6.602 min  
 Delta R.T.: 0.000 min  
 Response: 900291  
 Conc: 310.64 ng/ml

Instrument :  
 ECD\_O  
 ClientSampleId :



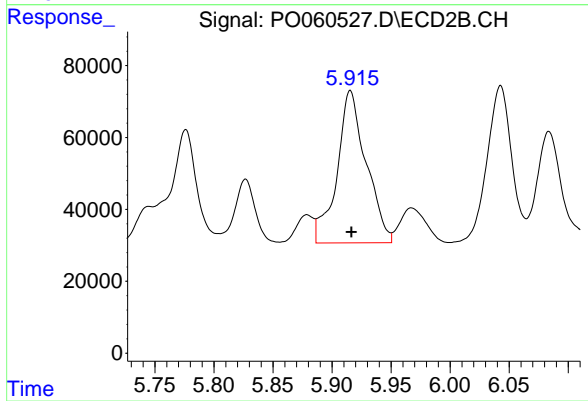
#27 AR-1254-2

R.T.: 5.520 min  
 Delta R.T.: -0.001 min  
 Response: 270470  
 Conc: 158.27 ng/ml



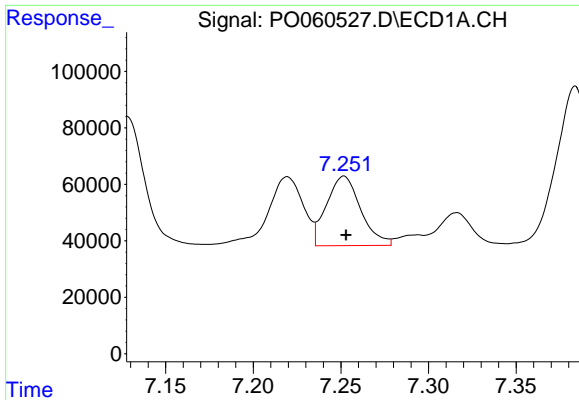
#28 AR-1254-3

R.T.: 6.967 min  
 Delta R.T.: -0.001 min  
 Response: 642419  
 Conc: 201.44 ng/ml



#28 AR-1254-3

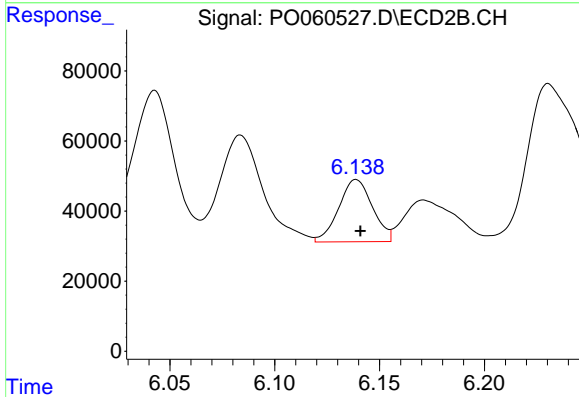
R.T.: 5.916 min  
 Delta R.T.: 0.000 min  
 Response: 727630  
 Conc: 259.44 ng/ml



#29 AR-1254-4

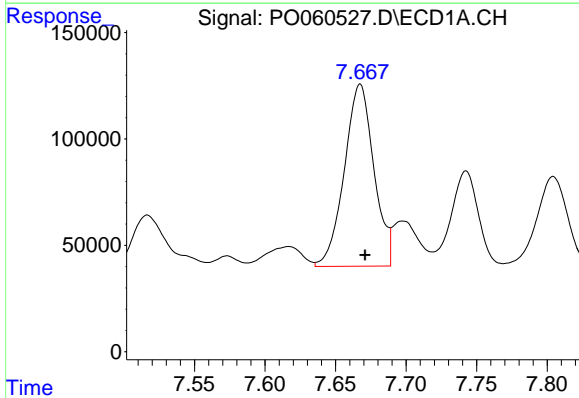
R.T.: 7.252 min  
 Delta R.T.: -0.001 min  
 Response: 334641  
 Conc: 139.36 ng/ml

Instrument :  
 ECD\_O  
 ClientSampled :



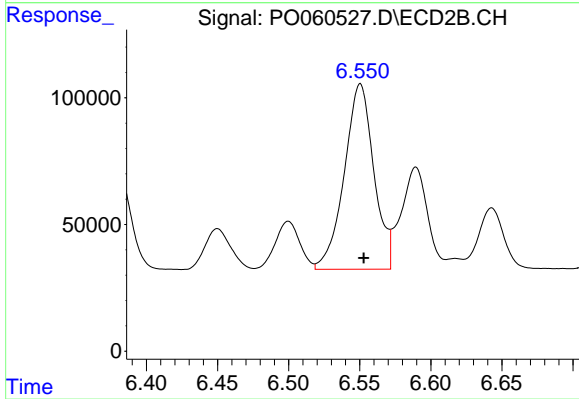
#29 AR-1254-4

R.T.: 6.139 min  
 Delta R.T.: -0.002 min  
 Response: 198825  
 Conc: 111.29 ng/ml



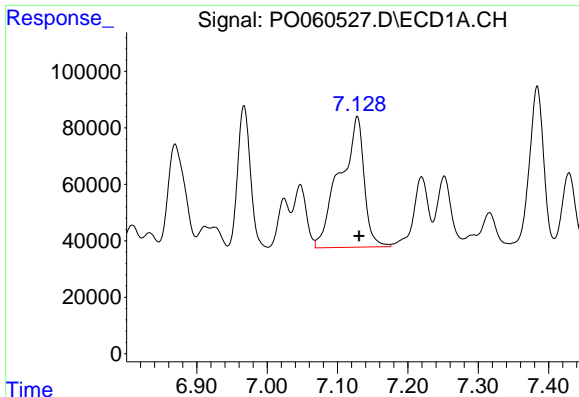
#30 AR-1254-5

R.T.: 7.667 min  
 Delta R.T.: -0.004 min  
 Response: 1247620  
 Conc: 458.64 ng/ml



#30 AR-1254-5

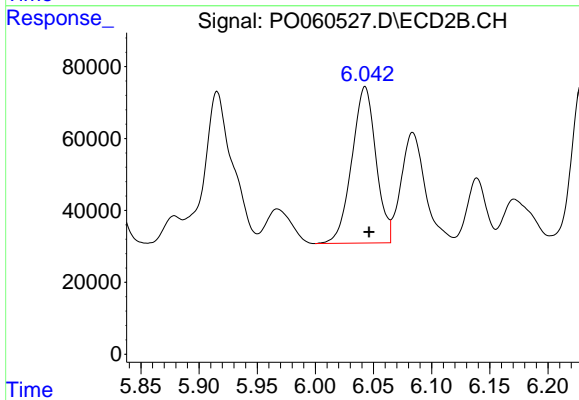
R.T.: 6.550 min  
 Delta R.T.: -0.002 min  
 Response: 1058593  
 Conc: 403.43 ng/ml



#31 AR-1260-1

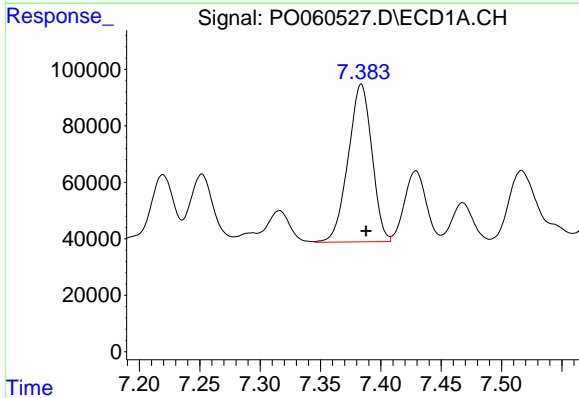
R.T.: 7.128 min  
 Delta R.T.: -0.002 min  
 Response: 1111849  
 Conc: 444.79 ng/ml

Instrument :  
 ECD\_O  
 ClientSampled :



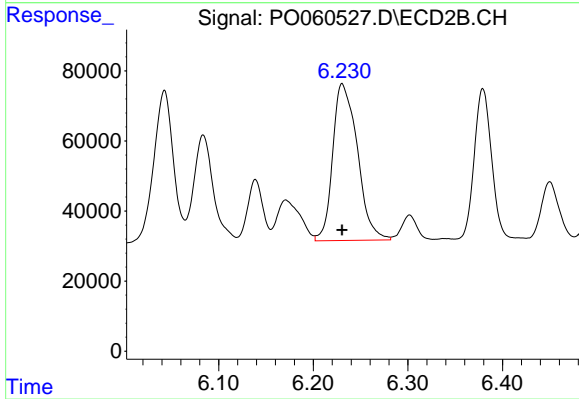
#31 AR-1260-1

R.T.: 6.043 min  
 Delta R.T.: -0.003 min  
 Response: 628415  
 Conc: 305.59 ng/ml



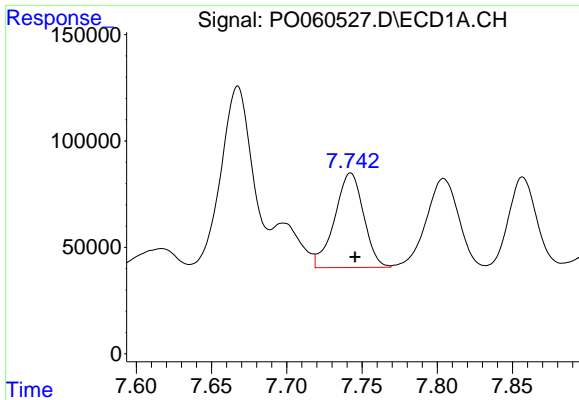
#32 AR-1260-2

R.T.: 7.384 min  
 Delta R.T.: -0.004 min  
 Response: 764852  
 Conc: 246.14 ng/ml



#32 AR-1260-2

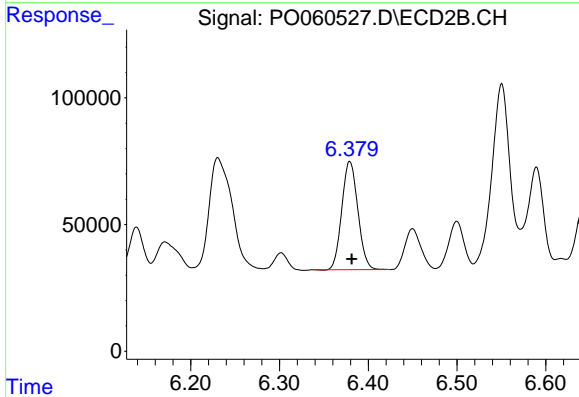
R.T.: 6.231 min  
 Delta R.T.: 0.000 min  
 Response: 810928  
 Conc: 323.88 ng/ml



#33 AR-1260-3

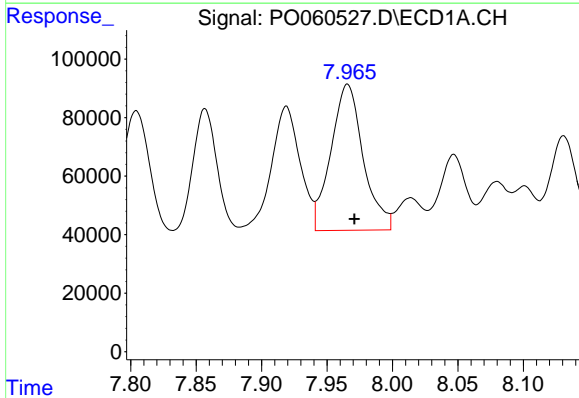
R.T.: 7.742 min  
 Delta R.T.: -0.003 min  
 Response: 595513  
 Conc: 238.07 ng/ml

Instrument :  
 ECD\_O  
 ClientSampleId :



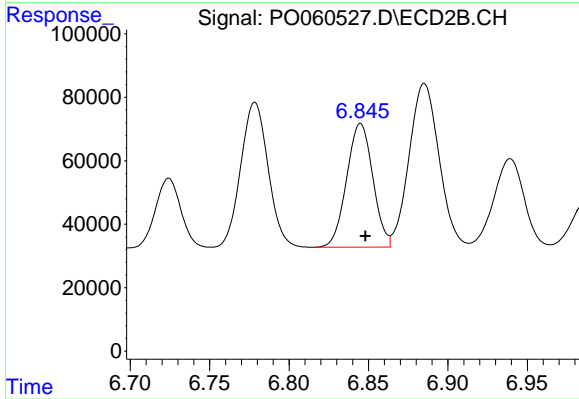
#33 AR-1260-3

R.T.: 6.379 min  
 Delta R.T.: -0.002 min  
 Response: 536916  
 Conc: 231.10 ng/ml



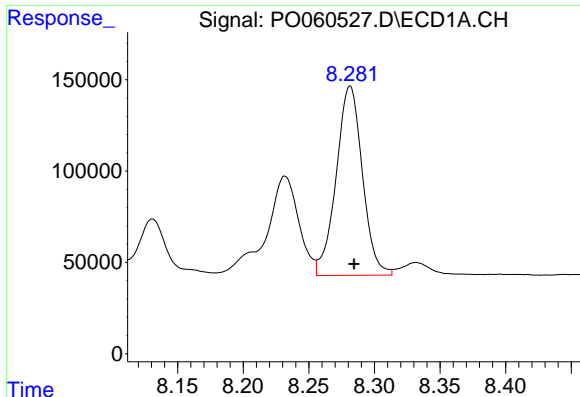
#34 AR-1260-4

R.T.: 7.966 min  
 Delta R.T.: -0.005 min  
 Response: 857546  
 Conc: 289.64 ng/ml



#34 AR-1260-4

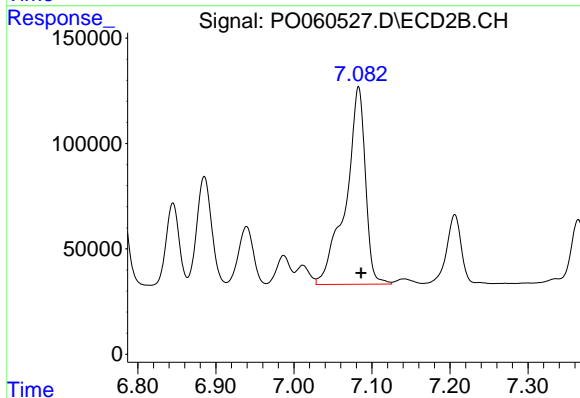
R.T.: 6.845 min  
 Delta R.T.: -0.003 min  
 Response: 446687  
 Conc: 219.93 ng/ml



#35 AR-1260-5

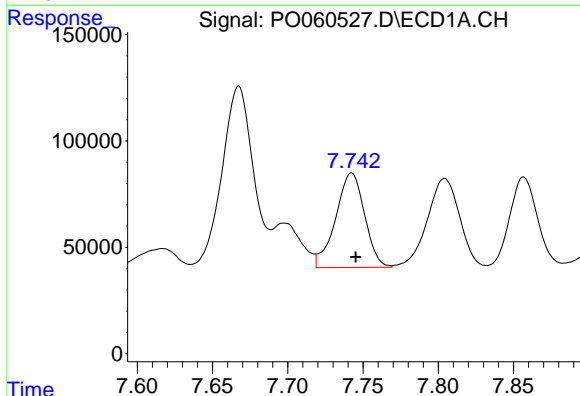
R.T.: 8.281 min  
 Delta R.T.: -0.003 min  
 Response: 1444744  
 Conc: 257.22 ng/ml

Instrument :  
 ECD\_O  
 ClientSampled :



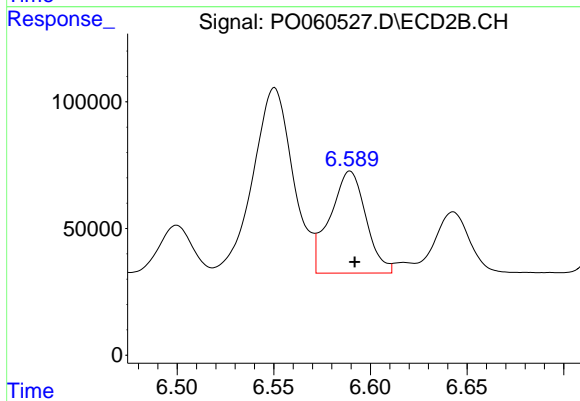
#35 AR-1260-5

R.T.: 7.083 min  
 Delta R.T.: -0.003 min  
 Response: 1640315  
 Conc: 358.08 ng/ml



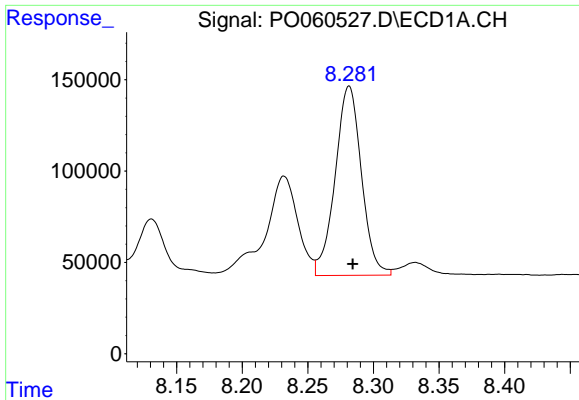
#36 AR-1262-1

R.T.: 7.742 min  
 Delta R.T.: -0.003 min  
 Response: 595513  
 Conc: 177.33 ng/ml



#36 AR-1262-1

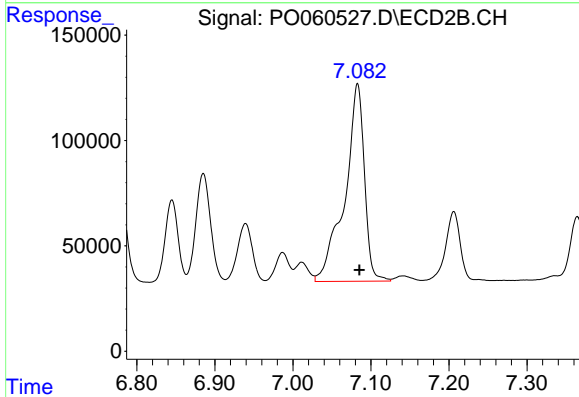
R.T.: 6.589 min  
 Delta R.T.: -0.002 min  
 Response: 520556  
 Conc: 195.78 ng/ml



#37 AR-1262-2

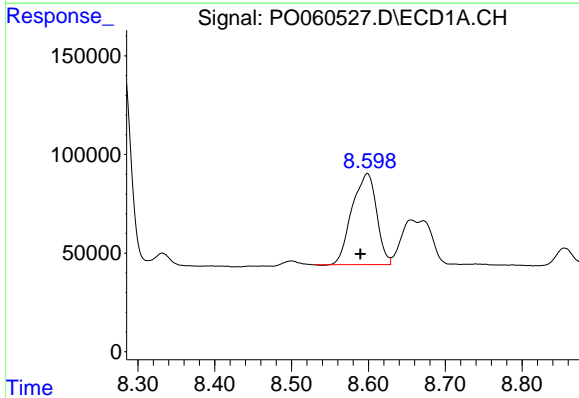
R.T.: 8.281 min  
 Delta R.T.: -0.003 min  
 Response: 1444744  
 Conc: 246.76 ng/ml

Instrument :  
 ECD\_O  
 ClientSampled :



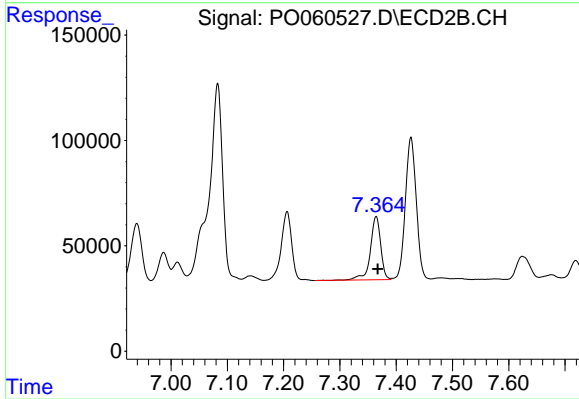
#37 AR-1262-2

R.T.: 7.083 min  
 Delta R.T.: -0.002 min  
 Response: 1640315  
 Conc: 361.33 ng/ml



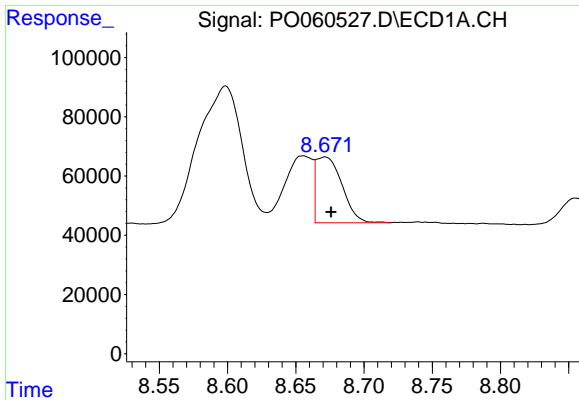
#38 AR-1262-3

R.T.: 8.599 min  
 Delta R.T.: 0.009 min  
 Response: 1027840  
 Conc: 256.86 ng/ml



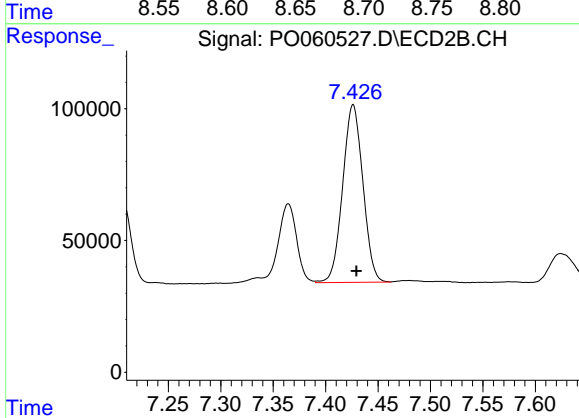
#38 AR-1262-3

R.T.: 7.364 min  
 Delta R.T.: -0.003 min  
 Response: 385633  
 Conc: 203.44 ng/ml

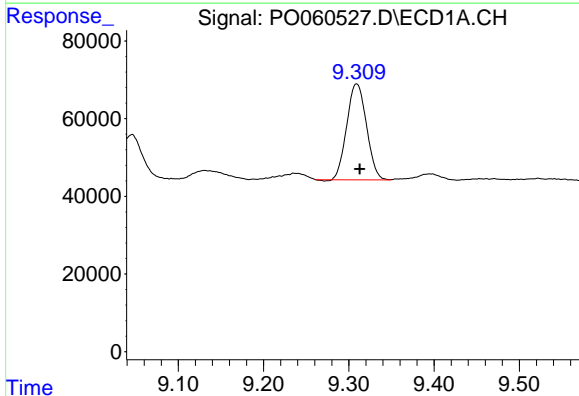


#39 AR-1262-4  
 R.T.: 8.671 min  
 Delta R.T.: -0.004 min  
 Response: 292655  
 Conc: 96.37 ng/ml

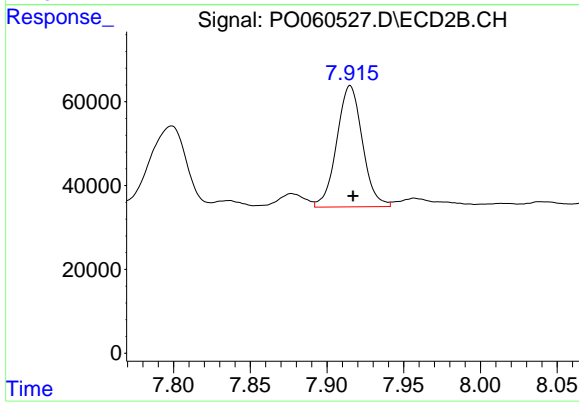
Instrument :  
 ECD\_O  
 ClientSampleId :



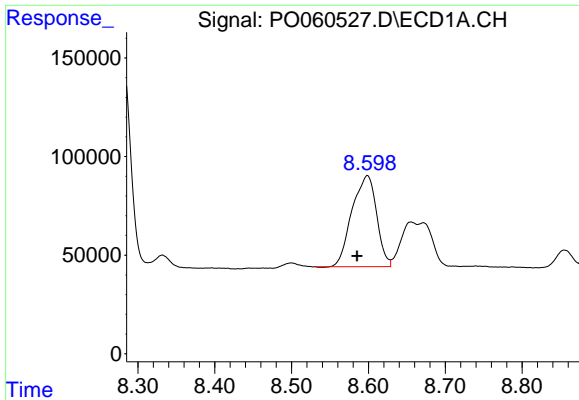
#39 AR-1262-4  
 R.T.: 7.426 min  
 Delta R.T.: -0.003 min  
 Response: 904931  
 Conc: 263.88 ng/ml



#40 AR-1262-5  
 R.T.: 9.309 min  
 Delta R.T.: -0.004 min  
 Response: 397671  
 Conc: 198.25 ng/ml



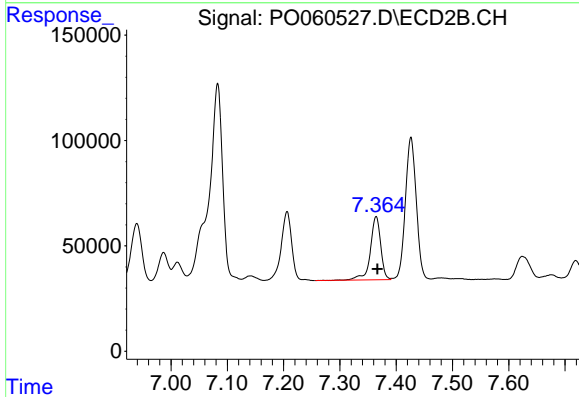
#40 AR-1262-5  
 R.T.: 7.915 min  
 Delta R.T.: -0.002 min  
 Response: 338057  
 Conc: 216.21 ng/ml



#41 AR-1268-1

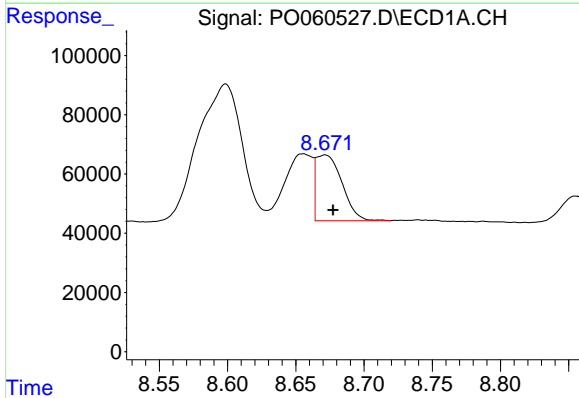
R.T.: 8.599 min  
 Delta R.T.: 0.013 min  
 Response: 1027840  
 Conc: 148.89 ng/ml

Instrument :  
 ECD\_O  
 ClientSampled :



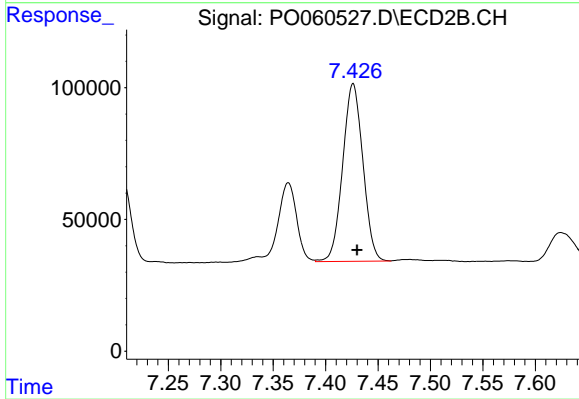
#41 AR-1268-1

R.T.: 7.364 min  
 Delta R.T.: -0.002 min  
 Response: 385633  
 Conc: 75.93 ng/ml



#42 AR-1268-2

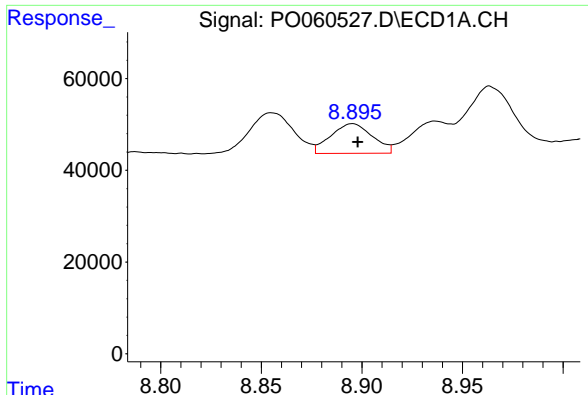
R.T.: 8.671 min  
 Delta R.T.: -0.006 min  
 Response: 292655  
 Conc: 45.51 ng/ml



#42 AR-1268-2

R.T.: 7.426 min  
 Delta R.T.: -0.004 min  
 Response: 904931  
 Conc: 194.82 ng/ml

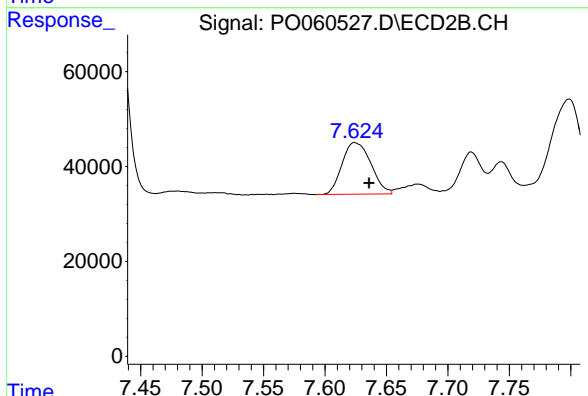




#43 AR-1268-3

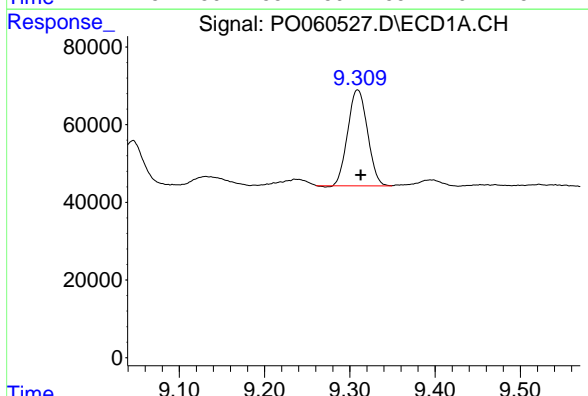
R.T.: 8.895 min  
 Delta R.T.: -0.003 min  
 Response: 93180  
 Conc: 17.58 ng/ml

Instrument :  
 ECD\_O  
 ClientSampleId :



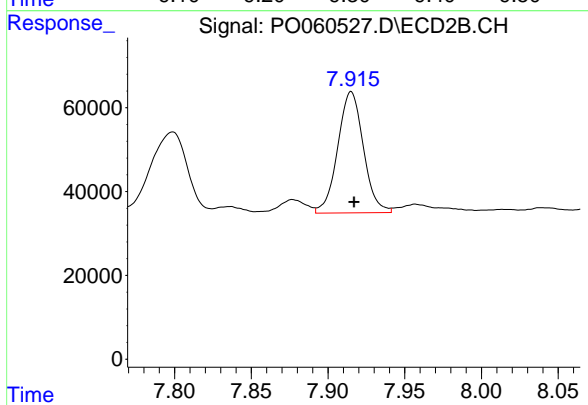
#43 AR-1268-3

R.T.: 7.624 min  
 Delta R.T.: -0.012 min  
 Response: 177794  
 Conc: 45.22 ng/ml



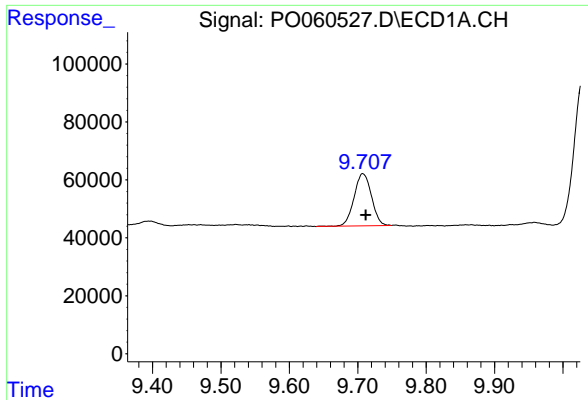
#44 AR-1268-4

R.T.: 9.309 min  
 Delta R.T.: -0.004 min  
 Response: 397671  
 Conc: 179.25 ng/ml



#44 AR-1268-4

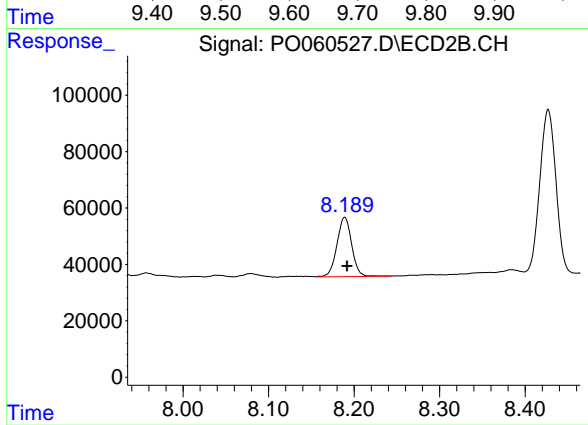
R.T.: 7.915 min  
 Delta R.T.: -0.002 min  
 Response: 338057  
 Conc: 198.82 ng/ml



#45 AR-1268-5

R.T.: 9.707 min  
Delta R.T.: -0.004 min  
Response: 319067  
Conc: 19.47 ng/ml

Instrument :  
ECD\_O  
ClientSampleId :



#45 AR-1268-5

R.T.: 8.189 min  
Delta R.T.: -0.003 min  
Response: 251436  
Conc: 22.44 ng/ml