

Data Path : Z:\pestpcbsrv\HPCHEM1\ECD_0\Data\P0090721\
 Data File : P0081013.D
 Signal(s) : Signal #1: ECD1A.CH Signal #2: ECD2B.CH
 Acq On : 07 Sep 2021 19:16
 Operator : DD\AJ
 Sample : AR1242CCC500
 Misc :
 ALS Vial : 4 Sample Multiplier: 1

Instrument :
 ECD_0
 ClientSampleId :
 AR1242CCC500

Integration File signal 1: autoint1.e
 Integration File signal 2: autoint2.e
 Quant Time: Sep 08 09:24:51 2021
 Quant Method : Z:\pestpcbsrv\HPCHEM1\ECD_0\methods\P0090221.M
 Quant Title : GC EXTRACTABLES
 QLast Update : Fri Sep 03 07:15:29 2021
 Response via : Initial Calibration
 Integrator: ChemStation 6890 Scale Mode: Small noise peaks clipped

Volume Inj. : 2 µl
 Signal #1 Phase : ZB-MR1 Signal #2 Phase: ZB-MR2
 Signal #1 Info : 30Mx0.32mmx 0.50µ Signal #2 Info : 30M x 0.32mm x 0.25µm

Compound	RT#1	RT#2	Resp#1	Resp#2	ng/ml	ng/ml

System Monitoring Compounds						
1) SA Tetrachlo...	4.929	4.055	4155775	1241155	52.643	50.225
2) SA Decachlor...	10.995	9.417	3058568	1118852	51.512	47.928
Target Compounds						
16) L4 AR-1242-1	6.260	5.327	1201748	379484	549.087	509.458
17) L4 AR-1242-2	6.283	5.347	1664400	517290	544.130	507.118
18) L4 AR-1242-3	6.349	5.542	1052083	283703	549.703	511.246
19) L4 AR-1242-4	6.458	5.638	876408	296769	568.163	524.557
20) L4 AR-1242-5	7.245	6.207	915637	376186	571.503	519.417

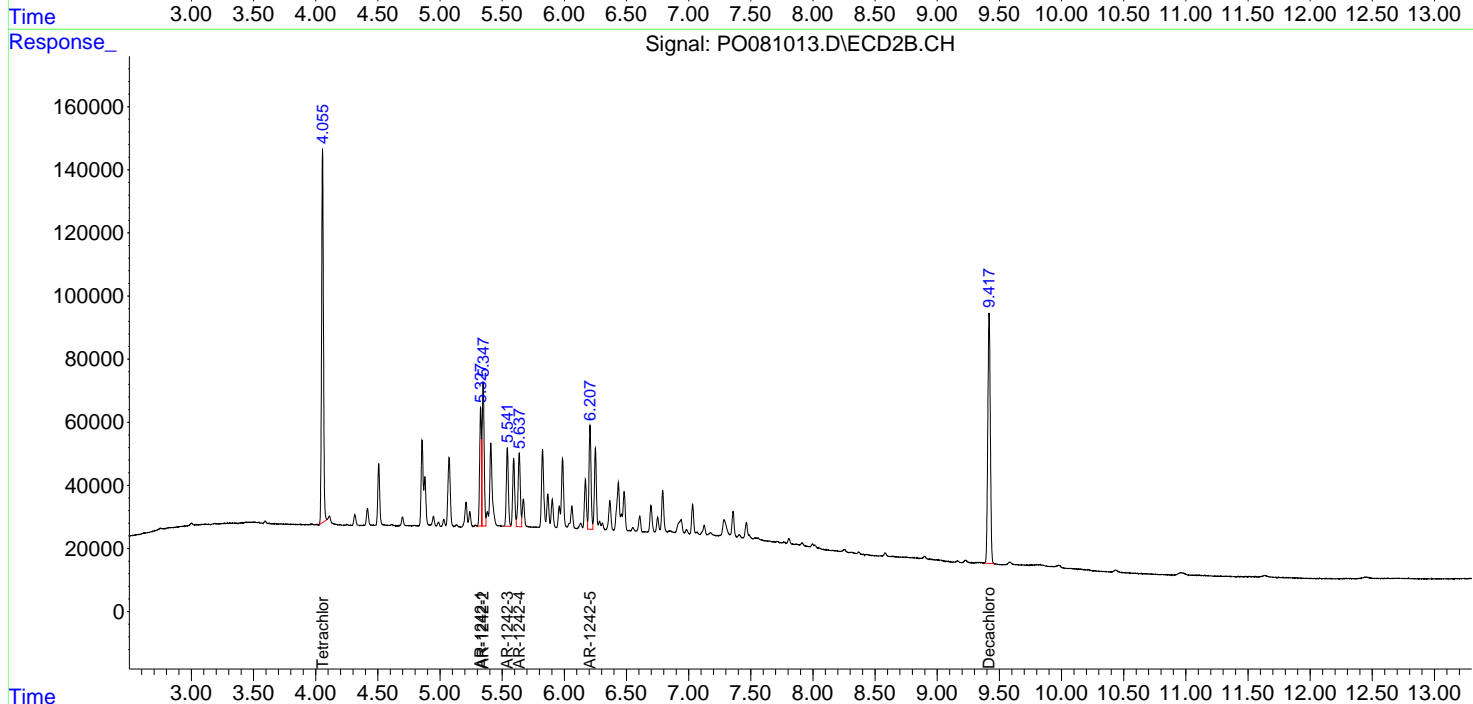
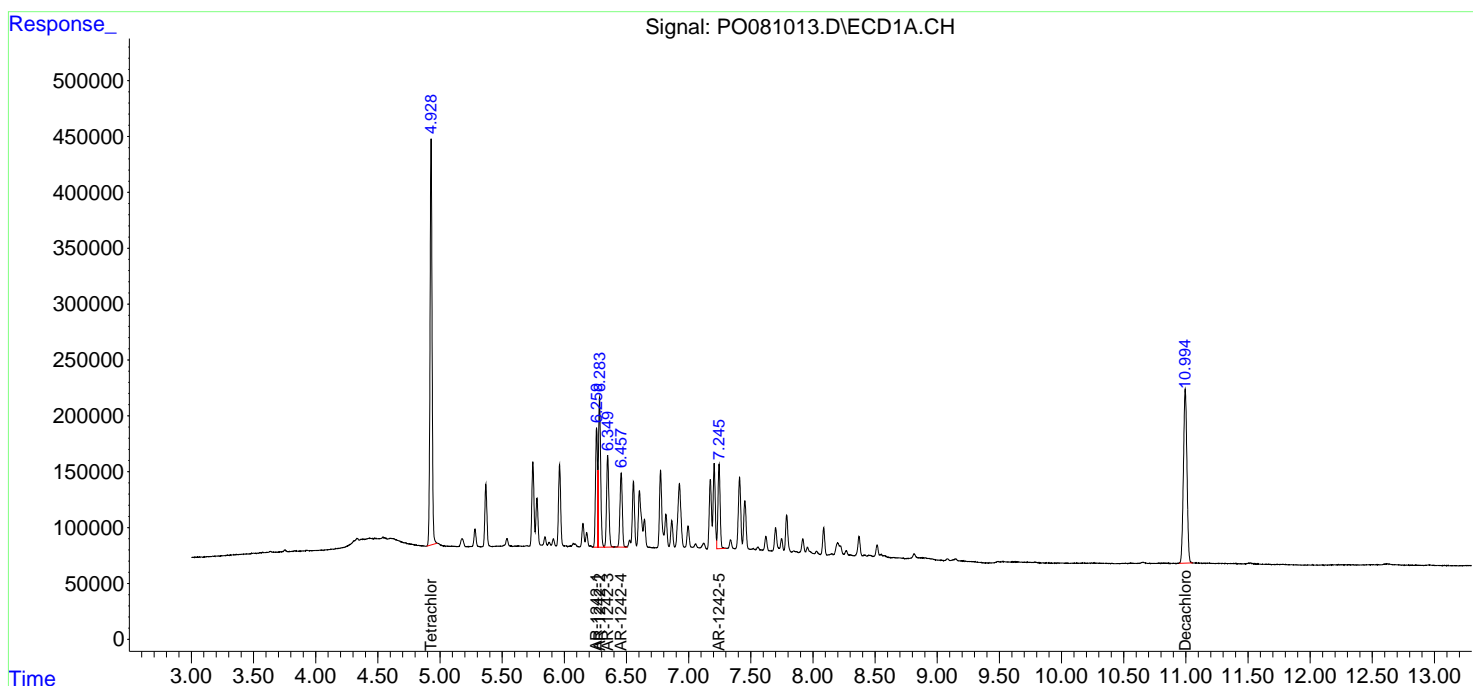
(f)=RT Delta > 1/2 Window (#)=Amounts differ by > 25% (m)=manual int.

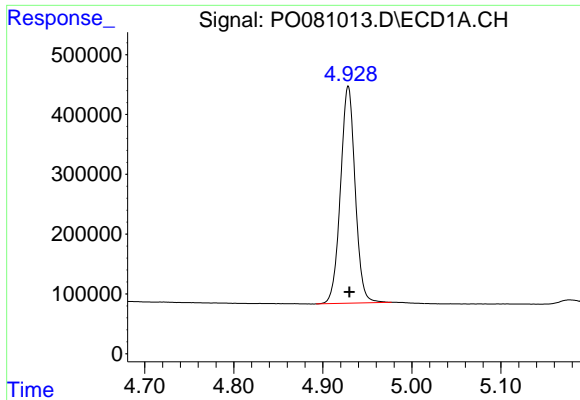
Data Path : Z:\pestpcbsrv\HPCHEM1\ECD_0\Data\P0090721\
 Data File : P0081013.D
 Signal(s) : Signal #1: ECD1A.CH Signal #2: ECD2B.CH
 Acq On : 07 Sep 2021 19:16
 Operator : DD\AJ
 Sample : AR1242CCC500
 Misc :
 ALS Vial : 4 Sample Multiplier: 1

Instrument :
 ECD_O
 ClientSampleId :
 AR1242CCC500

Integration File signal 1: autoint1.e
 Integration File signal 2: autoint2.e
 Quant Time: Sep 08 09:24:51 2021
 Quant Method : Z:\pestpcbsrv\HPCHEM1\ECD_0\methods\P0090221.M
 Quant Title : GC EXTRACTABLES
 QLast Update : Fri Sep 03 07:15:29 2021
 Response via : Initial Calibration
 Integrator: ChemStation 6890 Scale Mode: Small noise peaks clipped

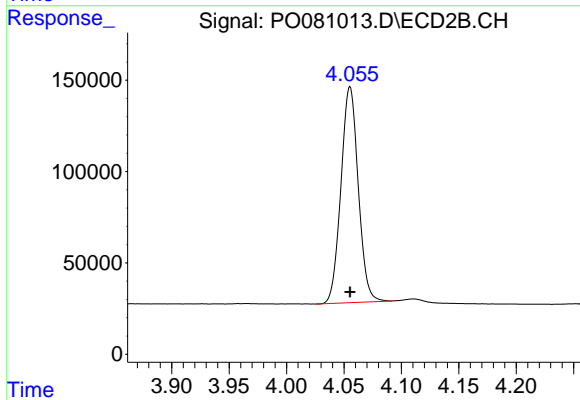
Volume Inj. : 2 µl
 Signal #1 Phase : ZB-MR1 Signal #2 Phase: ZB-MR2
 Signal #1 Info : 30Mx0.32mmx 0.50µ Signal #2 Info : 30M x 0.32mm x 0.25µm



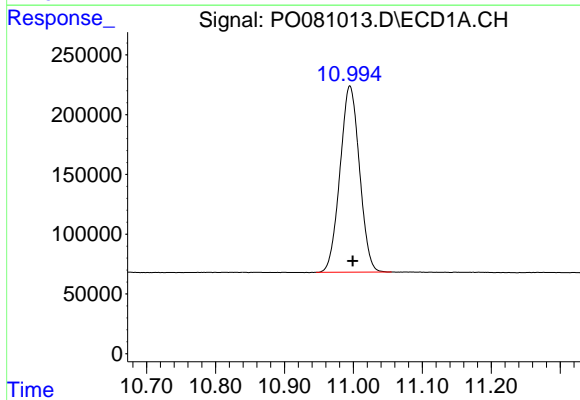


#1 Tetrachloro-m-xylene
 R.T.: 4.929 min
 Delta R.T.: -0.001 min
 Response: 4155775
 Conc: 52.64 ng/ml

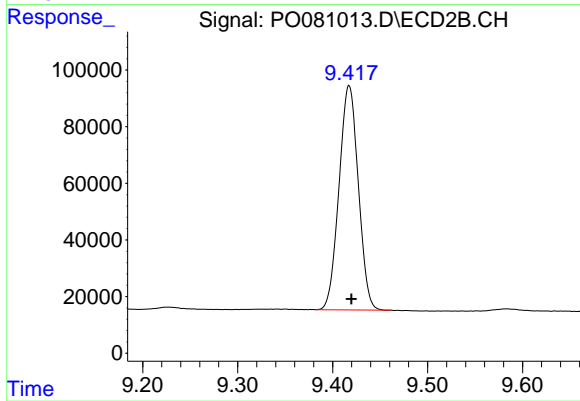
Instrument :
 ECD_O
 ClientSampleId :
 AR1242CCC500



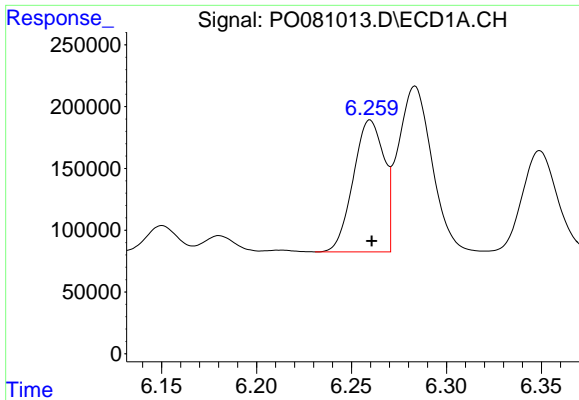
#1 Tetrachloro-m-xylene
 R.T.: 4.055 min
 Delta R.T.: 0.000 min
 Response: 1241155
 Conc: 50.22 ng/ml



#2 Decachlorobiphenyl
 R.T.: 10.995 min
 Delta R.T.: -0.004 min
 Response: 3058568
 Conc: 51.51 ng/ml



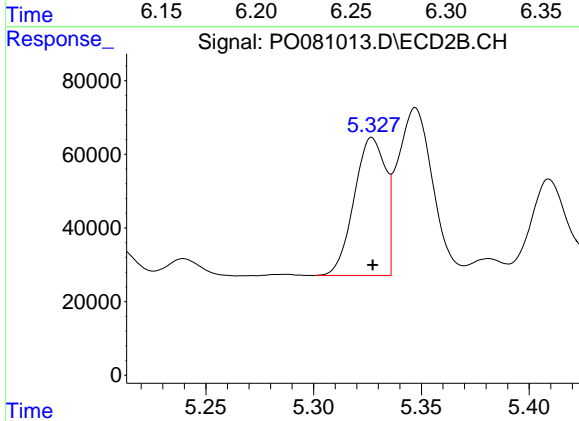
#2 Decachlorobiphenyl
 R.T.: 9.417 min
 Delta R.T.: -0.003 min
 Response: 1118852
 Conc: 47.93 ng/ml



#16 AR-1242-1

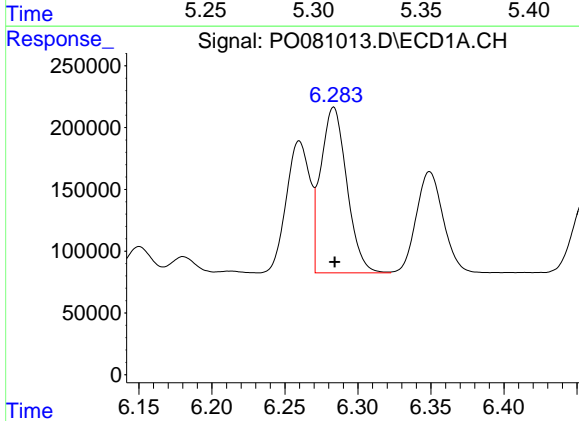
R.T.: 6.260 min
 Delta R.T.: 0.000 min
 Response: 1201748
 Conc: 549.09 ng/ml

Instrument :
 ECD_O
 ClientSampleId :
 AR1242CCC500



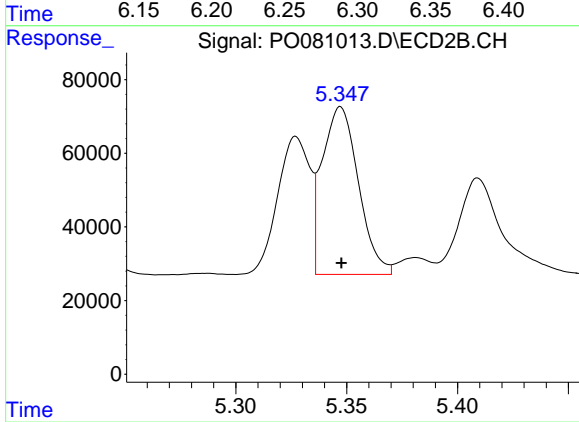
#16 AR-1242-1

R.T.: 5.327 min
 Delta R.T.: 0.000 min
 Response: 379484
 Conc: 509.46 ng/ml



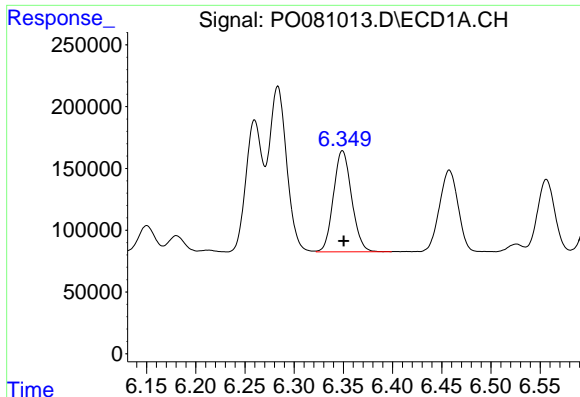
#17 AR-1242-2

R.T.: 6.283 min
 Delta R.T.: 0.000 min
 Response: 1664400
 Conc: 544.13 ng/ml



#17 AR-1242-2

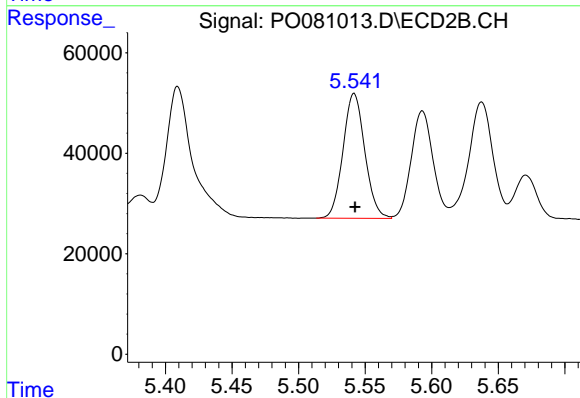
R.T.: 5.347 min
 Delta R.T.: 0.000 min
 Response: 517290
 Conc: 507.12 ng/ml



#18 AR-1242-3

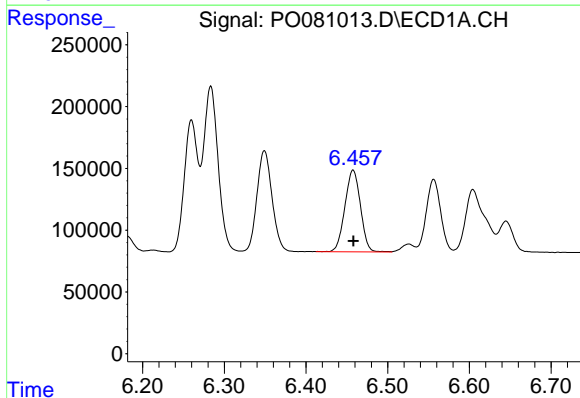
R.T.: 6.349 min
 Delta R.T.: -0.001 min
 Response: 1052083
 Conc: 549.70 ng/ml

Instrument :
 ECD_O
 ClientSampleId :
 AR1242CCC500



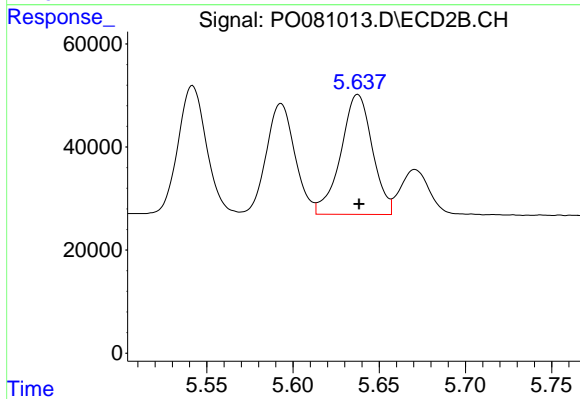
#18 AR-1242-3

R.T.: 5.542 min
 Delta R.T.: 0.000 min
 Response: 283703
 Conc: 511.25 ng/ml



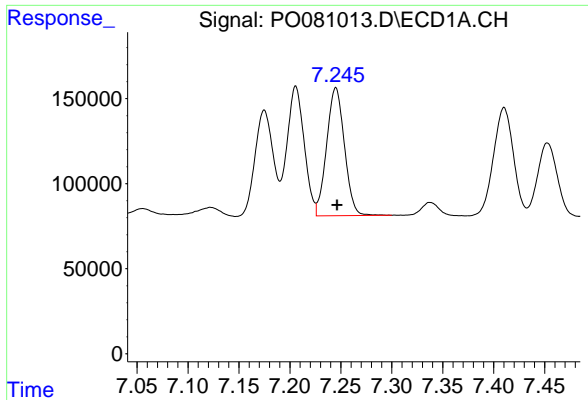
#19 AR-1242-4

R.T.: 6.458 min
 Delta R.T.: 0.000 min
 Response: 876408
 Conc: 568.16 ng/ml



#19 AR-1242-4

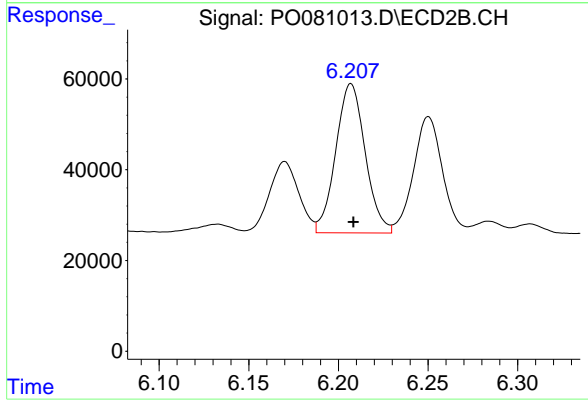
R.T.: 5.638 min
 Delta R.T.: 0.000 min
 Response: 296769
 Conc: 524.56 ng/ml



#20 AR-1242-5

R.T.: 7.245 min
Delta R.T.: -0.001 min
Response: 915637
Conc: 571.50 ng/ml

Instrument :
ECD_O
ClientSampleId :
AR1242CCC500



#20 AR-1242-5

R.T.: 6.207 min
Delta R.T.: -0.001 min
Response: 376186
Conc: 519.42 ng/ml