

Data Path : Z:\pestpcbsrv\HPCHEM1\ECD\_0\Data\P0090722\  
 Data File : P0089369.D  
 Signal(s) : Signal #1: ECD1A.ch Signal #2: ECD2B.ch  
 Acq On : 07 Sep 2022 13:59  
 Operator : YP/AJ  
 Sample : PB147476BL  
 Misc :  
 ALS Vial : 8 Sample Multiplier: 1

Instrument :  
 ECD\_0  
 ClientSampleId :  
 PB147476BL

Integration File signal 1: autoint1.e  
 Integration File signal 2: autoint2.e  
 Quant Time: Sep 07 14:26:06 2022  
 Quant Method : Z:\pestpcbsrv\HPCHEM1\ECD\_0\methods\P0082922.M  
 Quant Title : GC EXTRACTABLES  
 QLast Update : Mon Aug 29 17:48:02 2022  
 Response via : Initial Calibration  
 Integrator: ChemStation

Volume Inj. : 2 µl  
 Signal #1 Phase : ZB-MR1 Signal #2 Phase: ZB-MR2  
 Signal #1 Info : 30Mx0.32mmx 0.50µ Signal #2 Info : 30M x 0.32mm x 0.25µm

Compound	RT#1	RT#2	Resp#1	Resp#2	ng/ml	ng/ml
-----						
System Monitoring Compounds						
1) SA Tetrachlo...	4.427	3.584	78063140	22892892	20.819	23.717
2) SA Decachlor...	10.254	8.567	41898999	19631181	18.199	22.200

Target Compounds

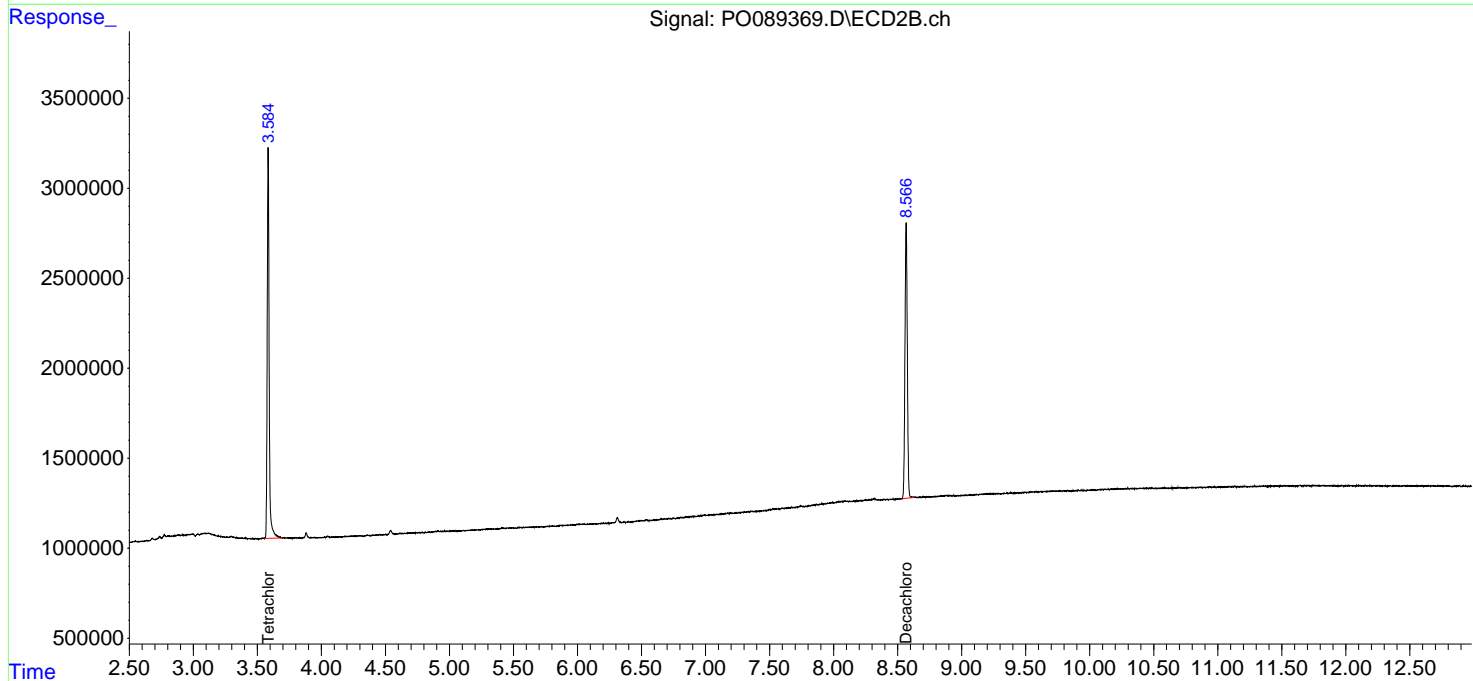
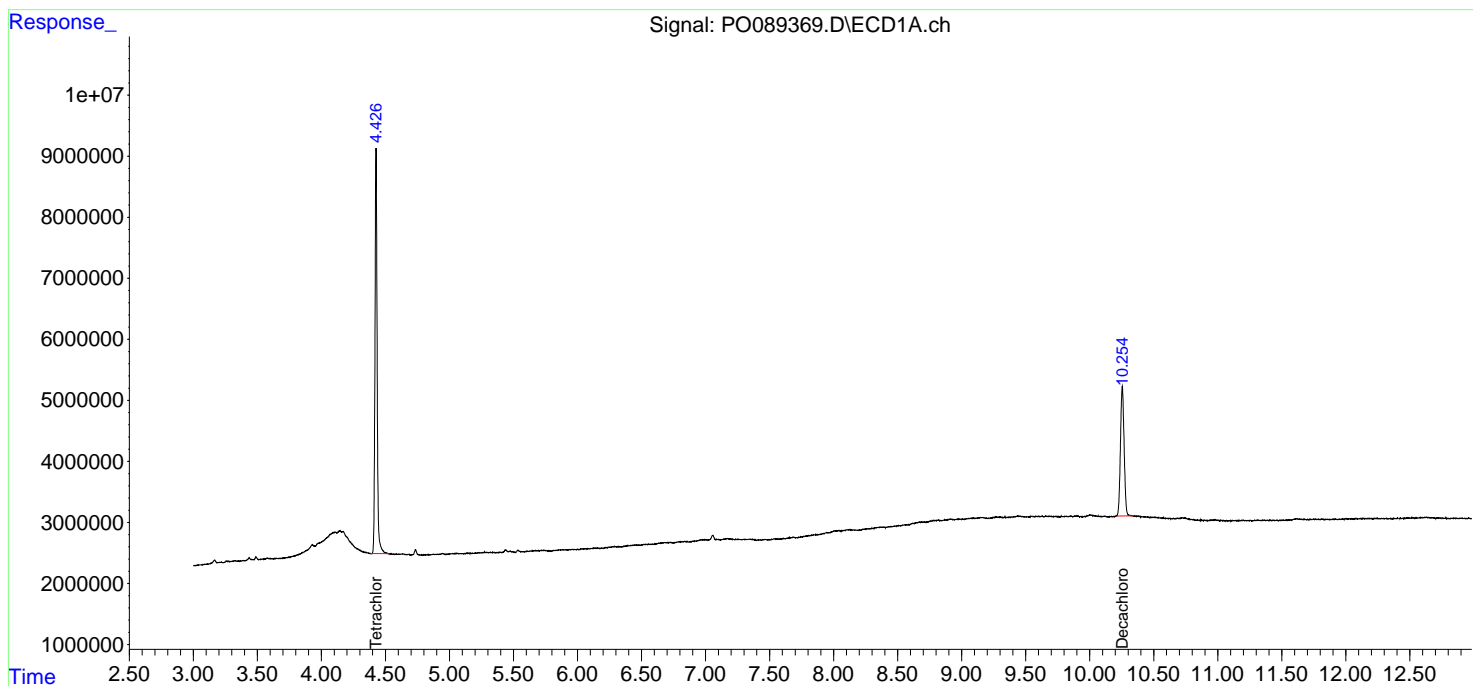
(f)=RT Delta > 1/2 Window (#)=Amounts differ by > 25% (m)=manual int.

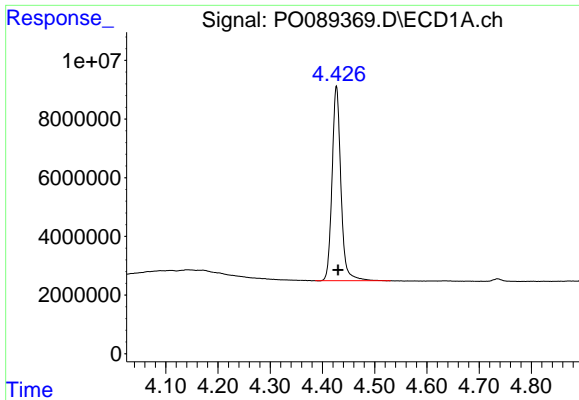
Data Path : Z:\pestpcbsrv\HPCHEM1\ECD\_O\Data\PO090722\  
 Data File : PO089369.D  
 Signal(s) : Signal #1: ECD1A.ch Signal #2: ECD2B.ch  
 Acq On : 07 Sep 2022 13:59  
 Operator : YP/AJ  
 Sample : PB147476BL  
 Misc :  
 ALS Vial : 8 Sample Multiplier: 1

Instrument :  
 ECD\_O  
 ClientSampleId :  
 PB147476BL

Integration File signal 1: autoint1.e  
 Integration File signal 2: autoint2.e  
 Quant Time: Sep 07 14:26:06 2022  
 Quant Method : Z:\pestpcbsrv\HPCHEM1\ECD\_O\methods\PO082922.M  
 Quant Title : GC EXTRACTABLES  
 QLast Update : Mon Aug 29 17:48:02 2022  
 Response via : Initial Calibration  
 Integrator: ChemStation

Volume Inj. : 2 µl  
 Signal #1 Phase : ZB-MR1 Signal #2 Phase: ZB-MR2  
 Signal #1 Info : 30Mx0.32mmx 0.50µ Signal #2 Info : 30M x 0.32mm x 0.25µm

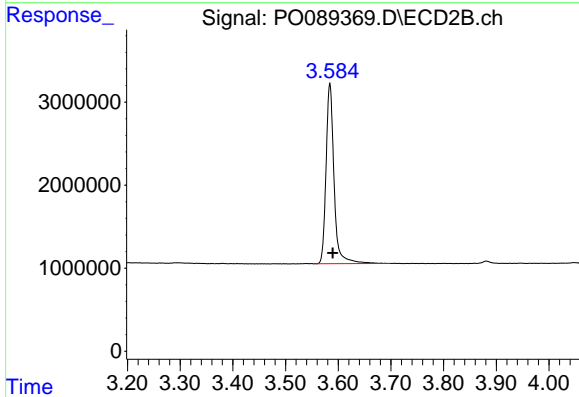




#1 Tetrachloro-m-xylene

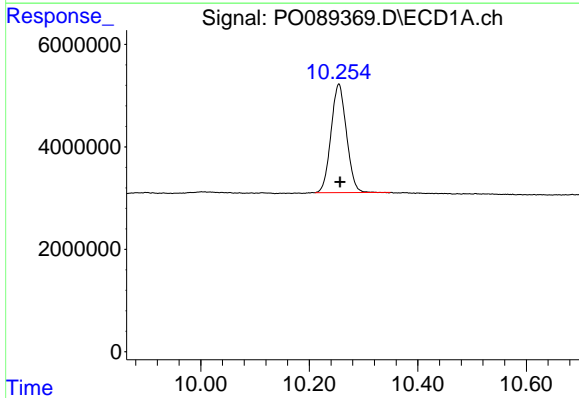
R.T.: 4.427 min  
 Delta R.T.: -0.003 min  
 Response: 78063140  
 Conc: 20.82 ng/ml

Instrument :  
 ECD\_O  
 ClientSampleId :  
 PB147476BL



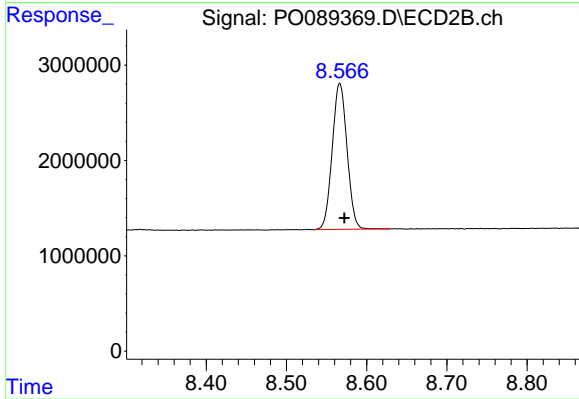
#1 Tetrachloro-m-xylene

R.T.: 3.584 min  
 Delta R.T.: -0.005 min  
 Response: 22892892  
 Conc: 23.72 ng/ml



#2 Decachlorobiphenyl

R.T.: 10.254 min  
 Delta R.T.: -0.002 min  
 Response: 41898999  
 Conc: 18.20 ng/ml



#2 Decachlorobiphenyl

R.T.: 8.567 min  
 Delta R.T.: -0.006 min  
 Response: 19631181  
 Conc: 22.20 ng/ml