

Data Path : Z:\pestpcbsrv\HPCHEM1\ECD\_0\Data\P0090722\  
 Data File : P0089374.D  
 Signal(s) : Signal #1: ECD1A.ch Signal #2: ECD2B.ch  
 Acq On : 07 Sep 2022 15:25  
 Operator : YP/AJ  
 Sample : N4504-04  
 Misc :  
 ALS Vial : 13 Sample Multiplier: 1

Instrument :  
 ECD\_0  
 ClientSampleId :  
 726

Integration File signal 1: autoint1.e  
 Integration File signal 2: autoint2.e  
 Quant Time: Sep 07 15:46:53 2022  
 Quant Method : Z:\pestpcbsrv\HPCHEM1\ECD\_0\methods\P0082922.M  
 Quant Title : GC EXTRACTABLES  
 QLast Update : Mon Aug 29 17:48:02 2022  
 Response via : Initial Calibration  
 Integrator: ChemStation

Volume Inj. : 2 µl  
 Signal #1 Phase : ZB-MR1 Signal #2 Phase: ZB-MR2  
 Signal #1 Info : 30Mx0.32mmx 0.50µ Signal #2 Info : 30M x 0.32mm x 0.25µm

Compound	RT#1	RT#2	Resp#1	Resp#2	ng/ml	ng/ml
-----						
System Monitoring Compounds						
1) SA Tetrachlo...	4.429	3.586	89828208	27771656	23.956	28.771
2) SA Decachlor...	10.257	8.568	47114905	22690148	20.464	25.659 #

Target Compounds

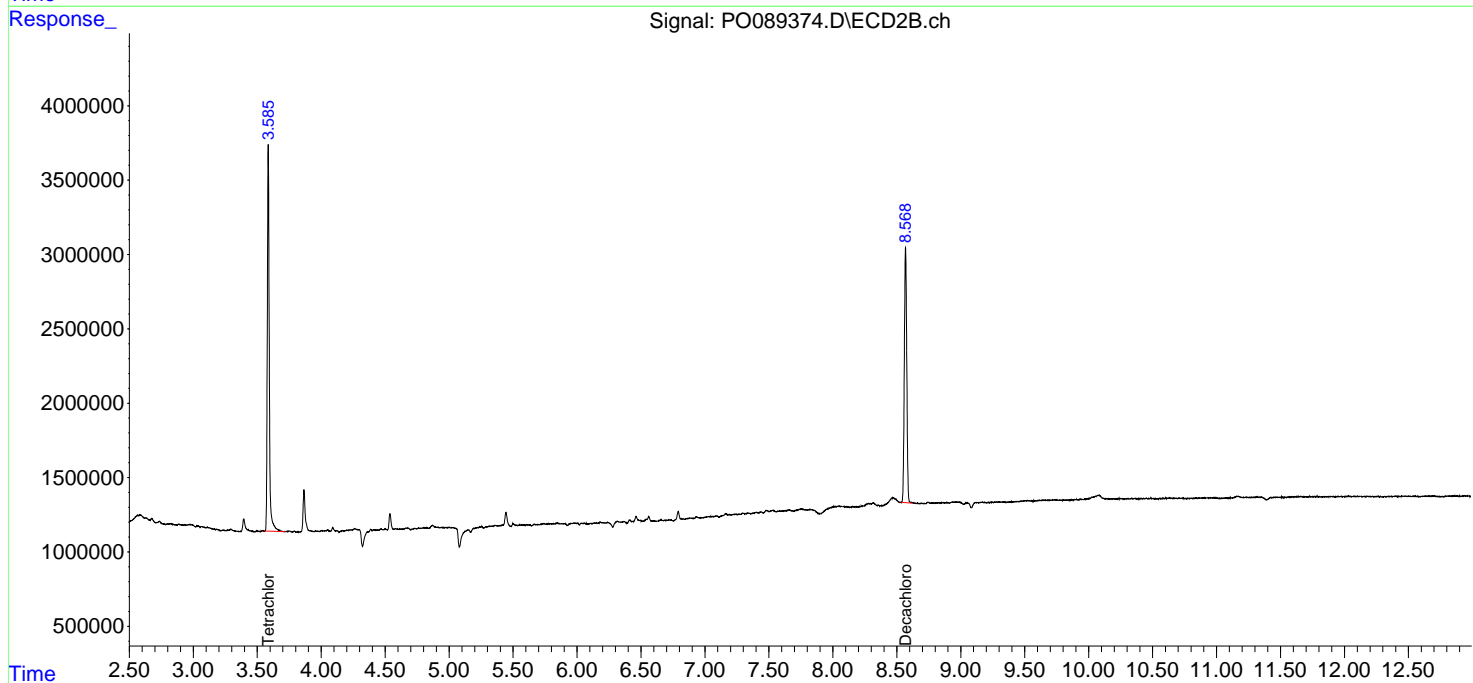
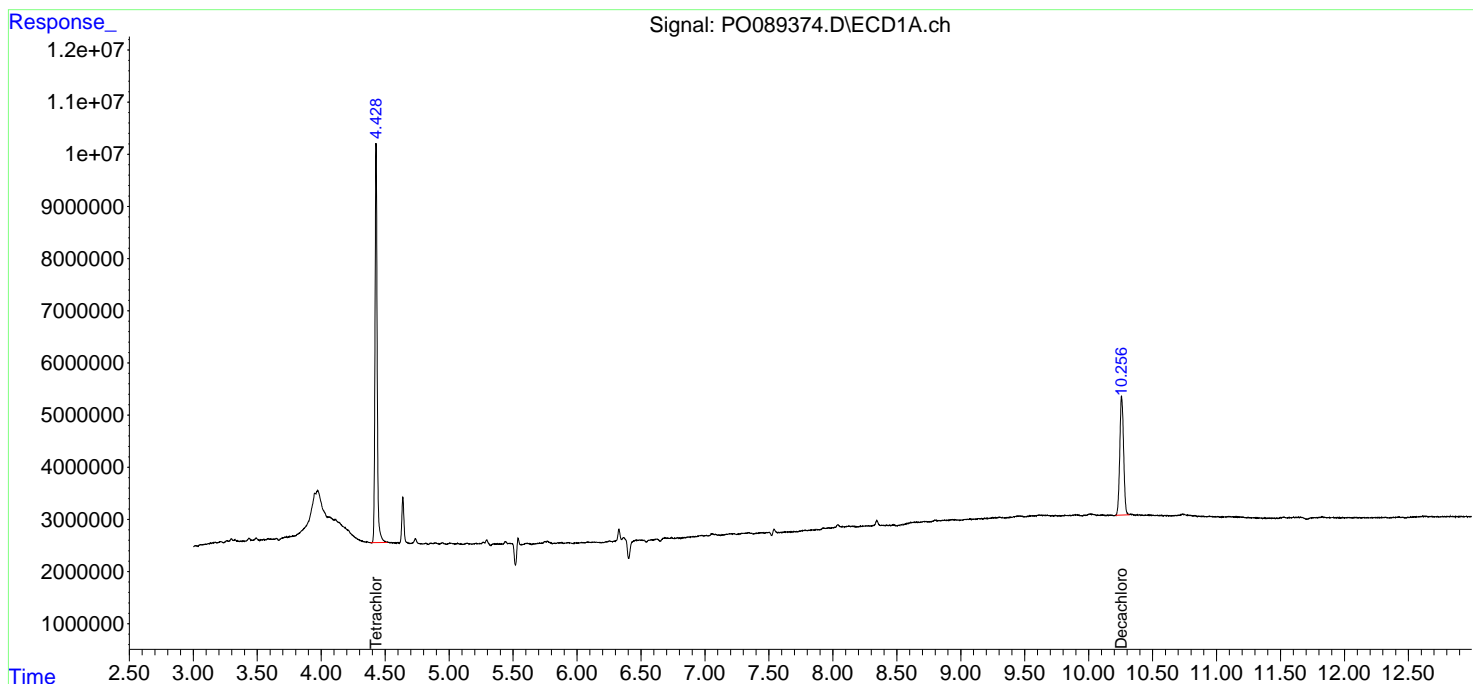
(f)=RT Delta > 1/2 Window (#)=Amounts differ by > 25% (m)=manual int.

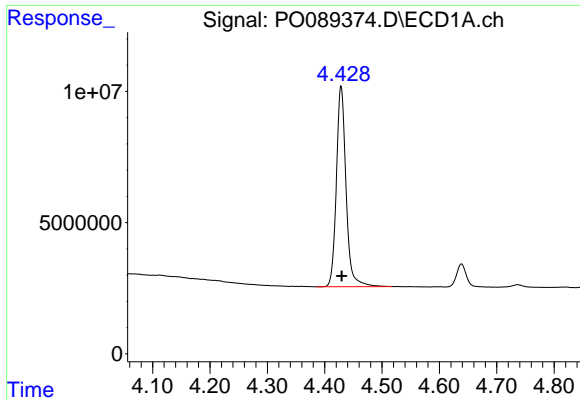
Data Path : Z:\pestpcbsrv\HPCHEM1\ECD\_0\Data\PO090722\  
 Data File : PO089374.D  
 Signal(s) : Signal #1: ECD1A.ch Signal #2: ECD2B.ch  
 Acq On : 07 Sep 2022 15:25  
 Operator : YP/AJ  
 Sample : N4504-04  
 Misc :  
 ALS Vial : 13 Sample Multiplier: 1

Instrument :  
 ECD\_0  
 ClientSampleId :  
 726

Integration File signal 1: autoint1.e  
 Integration File signal 2: autoint2.e  
 Quant Time: Sep 07 15:46:53 2022  
 Quant Method : Z:\pestpcbsrv\HPCHEM1\ECD\_0\methods\PO082922.M  
 Quant Title : GC EXTRACTABLES  
 QLast Update : Mon Aug 29 17:48:02 2022  
 Response via : Initial Calibration  
 Integrator: ChemStation

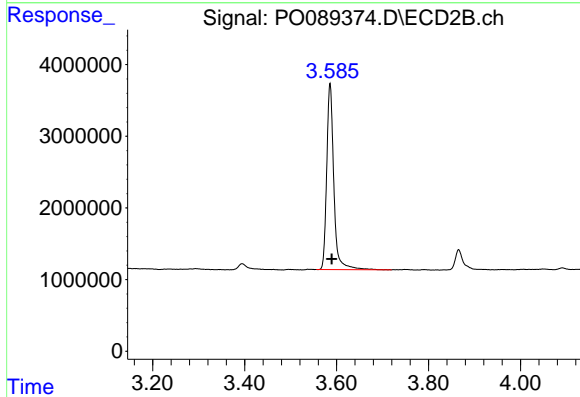
Volume Inj. : 2 µl  
 Signal #1 Phase : ZB-MR1 Signal #2 Phase: ZB-MR2  
 Signal #1 Info : 30Mx0.32mmx 0.50µ Signal #2 Info : 30M x 0.32mm x 0.25µm



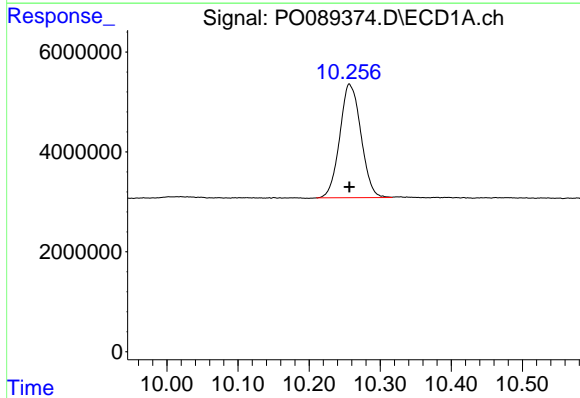


#1 Tetrachloro-m-xylene  
 R.T.: 4.429 min  
 Delta R.T.: -0.001 min  
 Response: 89828208  
 Conc: 23.96 ng/ml

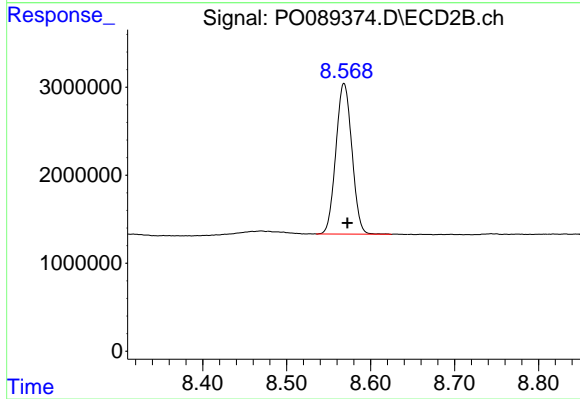
Instrument :  
 ECD\_O  
 ClientSampleId :  
 726



#1 Tetrachloro-m-xylene  
 R.T.: 3.586 min  
 Delta R.T.: -0.004 min  
 Response: 27771656  
 Conc: 28.77 ng/ml



#2 Decachlorobiphenyl  
 R.T.: 10.257 min  
 Delta R.T.: 0.000 min  
 Response: 47114905  
 Conc: 20.46 ng/ml



#2 Decachlorobiphenyl  
 R.T.: 8.568 min  
 Delta R.T.: -0.004 min  
 Response: 22690148  
 Conc: 25.66 ng/ml