

Data Path : Z:\pestpcbsrv\HPCHEM1\ECD\_0\Data\P0090722\  
 Data File : P0089378.D  
 Signal(s) : Signal #1: ECD1A.ch Signal #2: ECD2B.ch  
 Acq On : 07 Sep 2022 16:33  
 Operator : YP/AJ  
 Sample : AR1660CCC500  
 Misc :  
 ALS Vial : 3 Sample Multiplier: 1

Instrument :  
 ECD\_0  
 ClientSampleId :  
 AR1660CCC500

Integration File signal 1: autoint1.e  
 Integration File signal 2: autoint2.e  
 Quant Time: Sep 07 16:49:03 2022  
 Quant Method : Z:\pestpcbsrv\HPCHEM1\ECD\_0\methods\P0082922.M  
 Quant Title : GC EXTRACTABLES  
 QLast Update : Mon Aug 29 17:48:02 2022  
 Response via : Initial Calibration  
 Integrator: ChemStation

Volume Inj. : 2 µl  
 Signal #1 Phase : ZB-MR1 Signal #2 Phase: ZB-MR2  
 Signal #1 Info : 30Mx0.32mmx 0.50µ Signal #2 Info : 30M x 0.32mm x 0.25µm

Compound	RT#1	RT#2	Resp#1	Resp#2	ng/ml	ng/ml
-----						
System Monitoring Compounds						
1) SA Tetrachlo...	4.429	3.586	198.0E6	56980585	52.815	59.031
2) SA Decachlor...	10.261	8.570	106.4E6	50884516	46.220	57.543
Target Compounds						
3) L1 AR-1016-1	5.604	4.661	56147407	19721049	499.373	546.090
4) L1 AR-1016-2	5.627	4.679	79354631	27573665	503.524	558.518
5) L1 AR-1016-3	5.690	4.854	49639202	14769759	508.974	555.314
6) L1 AR-1016-4	5.789	4.897	39467779	11770865	501.582	546.890
7) L1 AR-1016-5	6.086	5.109	38194474	15459076	497.689	529.823
31) L7 AR-1260-1	7.218	6.139	62806167	28778730	466.422	512.959
32) L7 AR-1260-2	7.476	6.327	70515982	34337054	462.056	505.313
33) L7 AR-1260-3	7.837	6.480	50204800	31137071	449.295	507.500
34) L7 AR-1260-4	8.064	6.951	55739161	26100305	451.515	517.941
35) L7 AR-1260-5	8.391	7.194	106.3E6	60652911	445.674	530.110

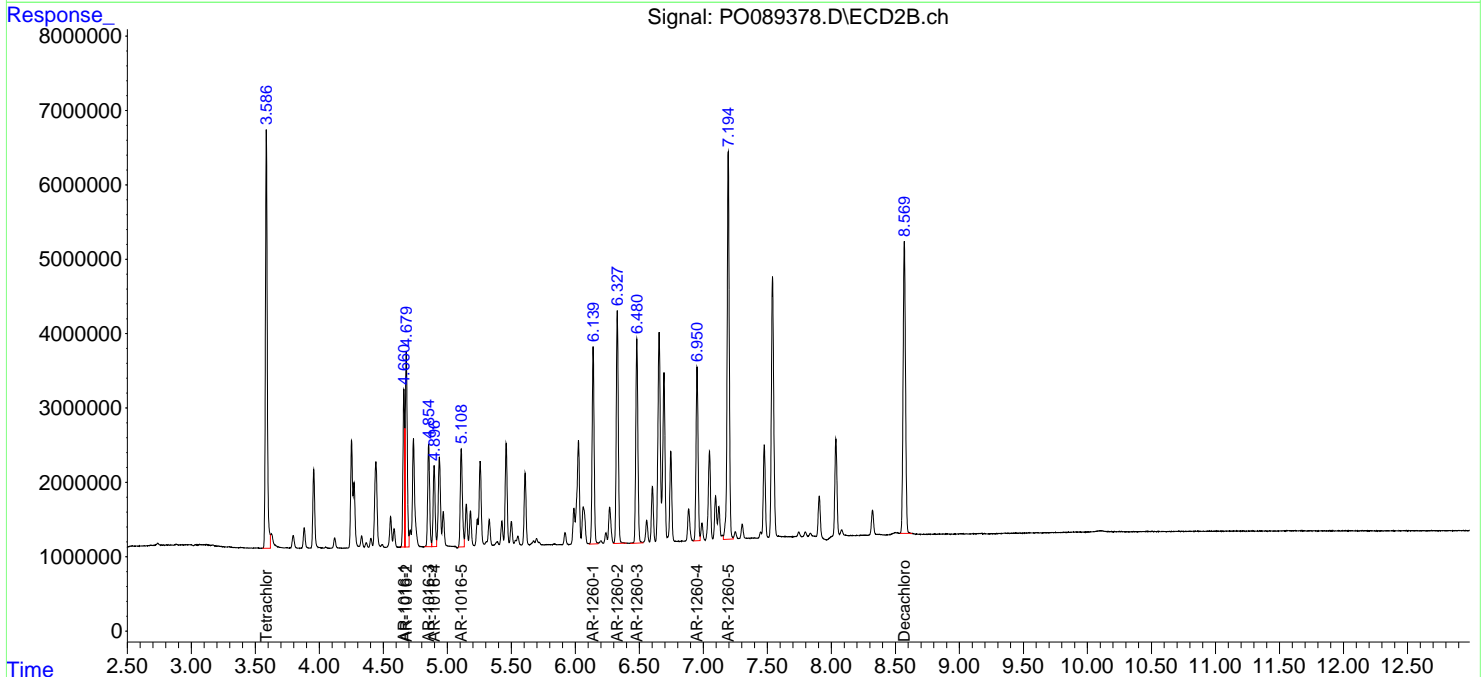
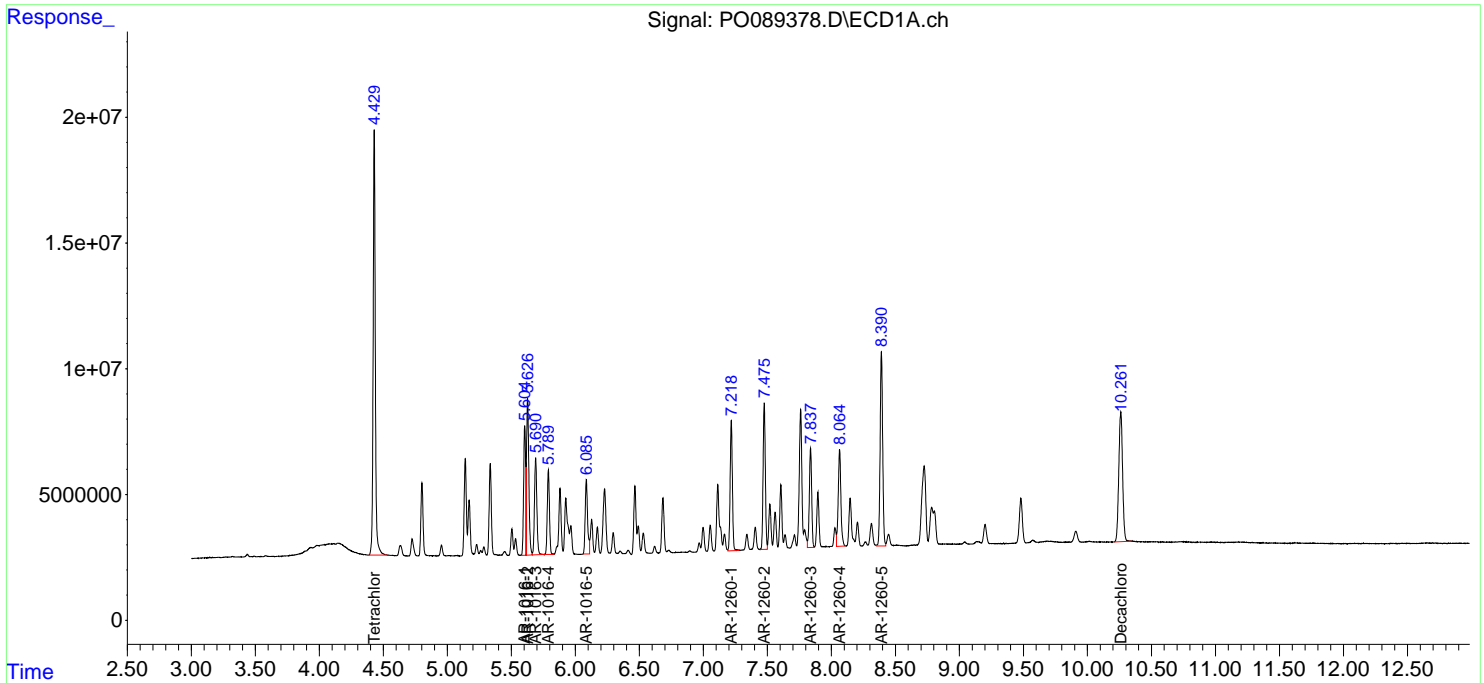
(f)=RT Delta > 1/2 Window (#)=Amounts differ by > 25% (m)=manual int.

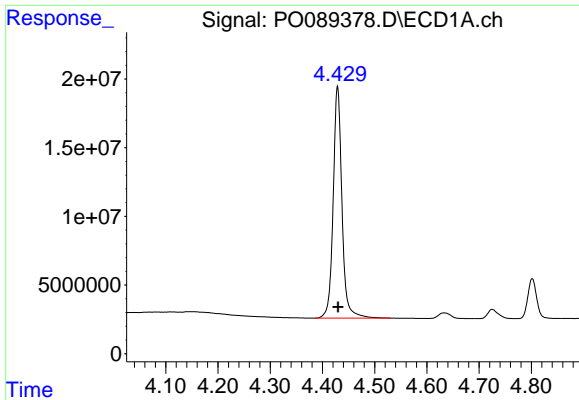
Data Path : Z:\pestpcbsrv\HPCHEM1\ECD\_O\Data\PO090722\  
 Data File : PO089378.D  
 Signal(s) : Signal #1: ECD1A.ch Signal #2: ECD2B.ch  
 Acq On : 07 Sep 2022 16:33  
 Operator : YP/AJ  
 Sample : AR1660CCC500  
 Misc :  
 ALS Vial : 3 Sample Multiplier: 1

Instrument :  
 ECD\_O  
 ClientSampleId :  
 AR1660CCC500

Integration File signal 1: autoint1.e  
 Integration File signal 2: autoint2.e  
 Quant Time: Sep 07 16:49:03 2022  
 Quant Method : Z:\pestpcbsrv\HPCHEM1\ECD\_O\methods\PO082922.M  
 Quant Title : GC EXTRACTABLES  
 QLast Update : Mon Aug 29 17:48:02 2022  
 Response via : Initial Calibration  
 Integrator: ChemStation

Volume Inj. : 2 µl  
 Signal #1 Phase : ZB-MR1 Signal #2 Phase: ZB-MR2  
 Signal #1 Info : 30Mx0.32mmx 0.50µ Signal #2 Info : 30M x 0.32mm x 0.25µm

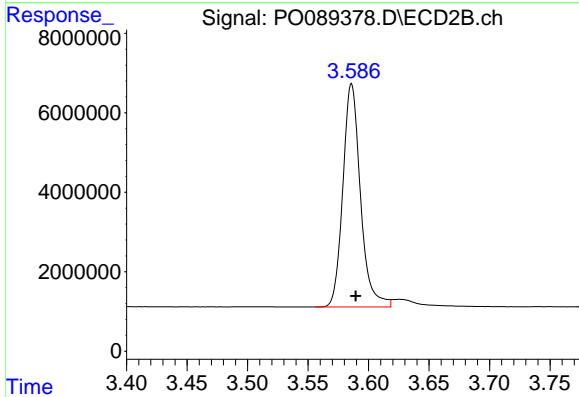




#1 Tetrachloro-m-xylene

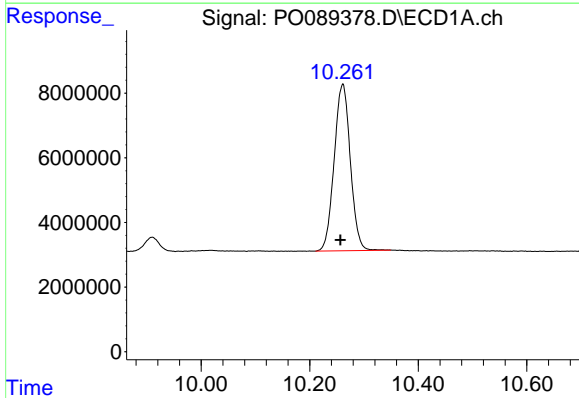
R.T.: 4.429 min  
 Delta R.T.: 0.000 min  
 Response: 198036159  
 Conc: 52.81 ng/ml

Instrument :  
 ECD\_O  
 ClientSampleId :  
 AR1660CCC500



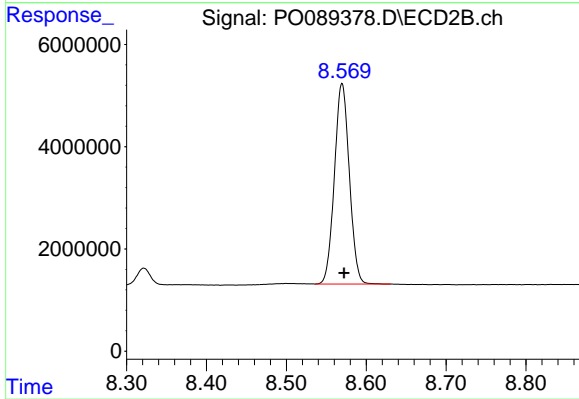
#1 Tetrachloro-m-xylene

R.T.: 3.586 min  
 Delta R.T.: -0.003 min  
 Response: 56980585  
 Conc: 59.03 ng/ml



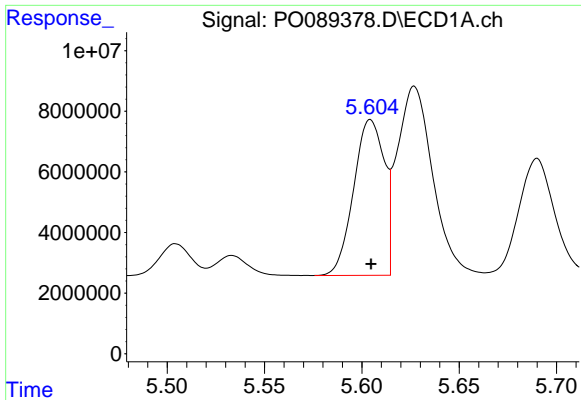
#2 Decachlorobiphenyl

R.T.: 10.261 min  
 Delta R.T.: 0.004 min  
 Response: 106413349  
 Conc: 46.22 ng/ml



#2 Decachlorobiphenyl

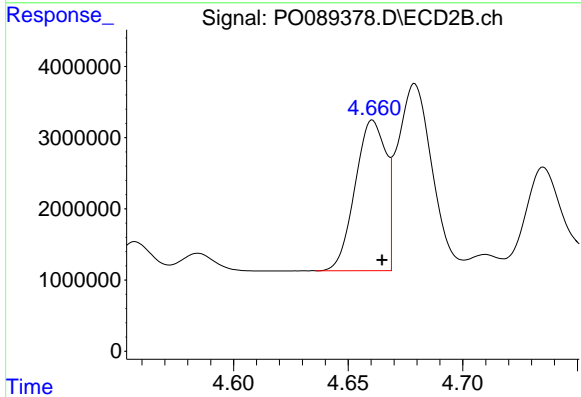
R.T.: 8.570 min  
 Delta R.T.: -0.002 min  
 Response: 50884516  
 Conc: 57.54 ng/ml



#3 AR-1016-1

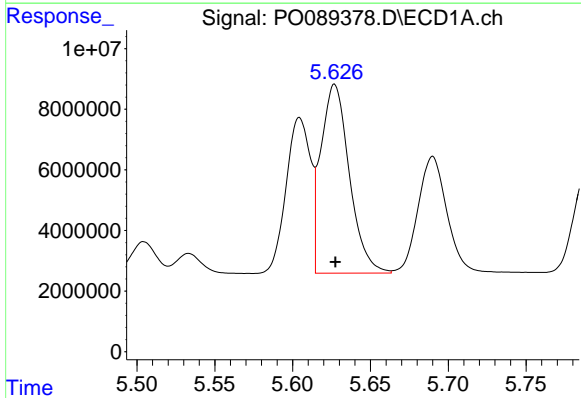
R.T.: 5.604 min  
 Delta R.T.: 0.000 min  
 Response: 56147407  
 Conc: 499.37 ng/ml

Instrument :  
 ECD\_O  
 ClientSampleId :  
 AR1660CCC500



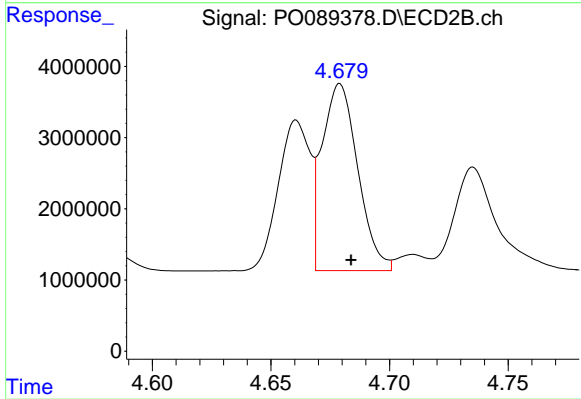
#3 AR-1016-1

R.T.: 4.661 min  
 Delta R.T.: -0.004 min  
 Response: 19721049  
 Conc: 546.09 ng/ml



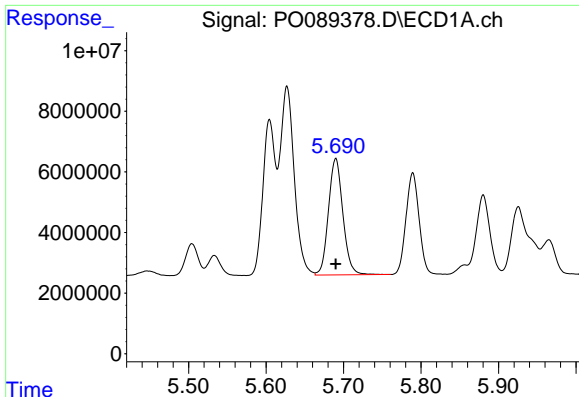
#4 AR-1016-2

R.T.: 5.627 min  
 Delta R.T.: 0.000 min  
 Response: 79354631  
 Conc: 503.52 ng/ml



#4 AR-1016-2

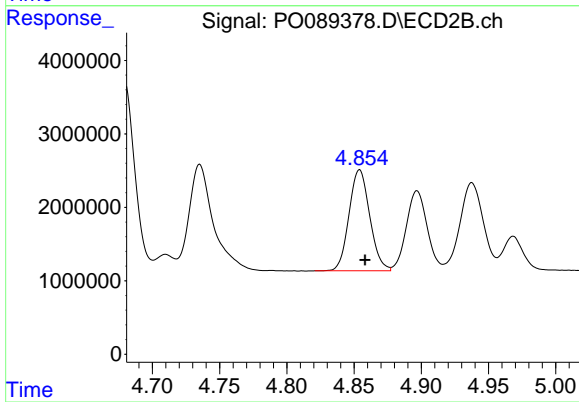
R.T.: 4.679 min  
 Delta R.T.: -0.005 min  
 Response: 27573665  
 Conc: 558.52 ng/ml



#5 AR-1016-3

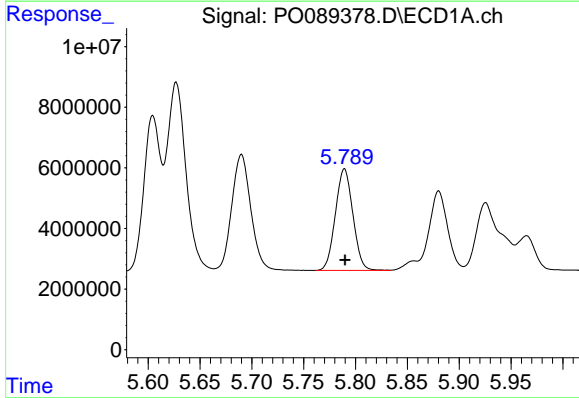
R.T.: 5.690 min  
 Delta R.T.: 0.000 min  
 Response: 49639202  
 Conc: 508.97 ng/ml

Instrument :  
 ECD\_O  
 ClientSampleId :  
 AR1660CCC500



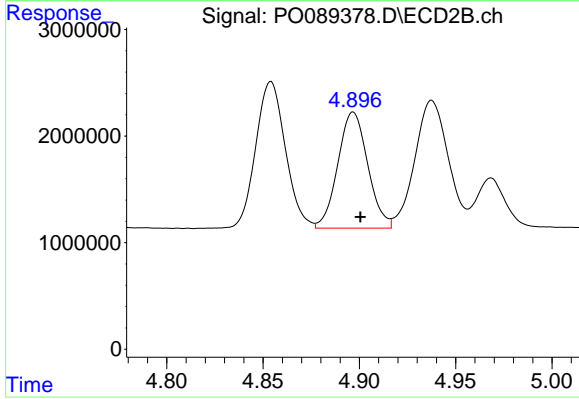
#5 AR-1016-3

R.T.: 4.854 min  
 Delta R.T.: -0.004 min  
 Response: 14769759  
 Conc: 555.31 ng/ml



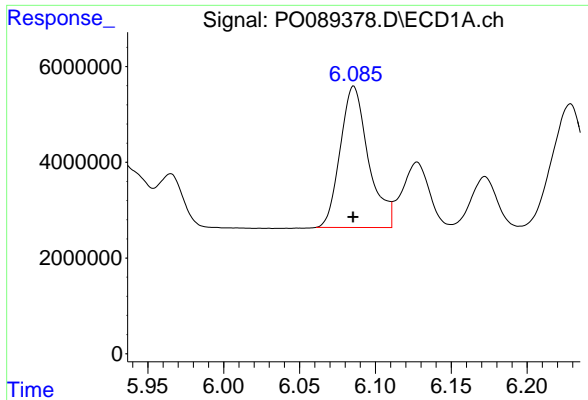
#6 AR-1016-4

R.T.: 5.789 min  
 Delta R.T.: 0.000 min  
 Response: 39467779  
 Conc: 501.58 ng/ml



#6 AR-1016-4

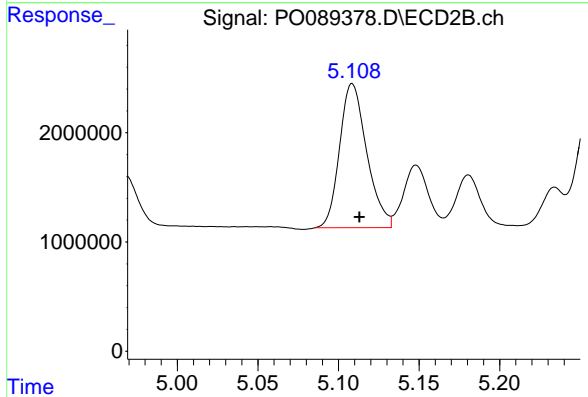
R.T.: 4.897 min  
 Delta R.T.: -0.004 min  
 Response: 11770865  
 Conc: 546.89 ng/ml



#7 AR-1016-5

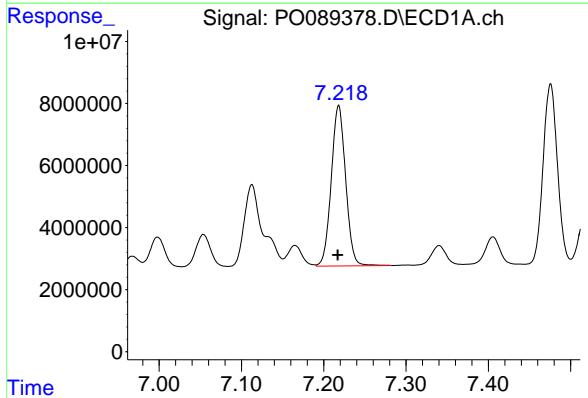
R.T.: 6.086 min  
 Delta R.T.: 0.000 min  
 Response: 38194474  
 Conc: 497.69 ng/ml

Instrument :  
 ECD\_O  
 ClientSampleId :  
 AR1660CCC500



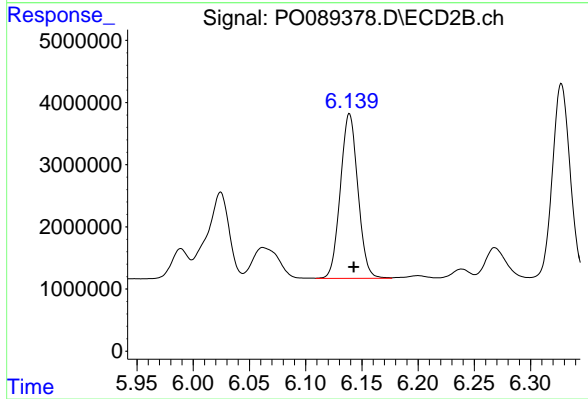
#7 AR-1016-5

R.T.: 5.109 min  
 Delta R.T.: -0.004 min  
 Response: 15459076  
 Conc: 529.82 ng/ml



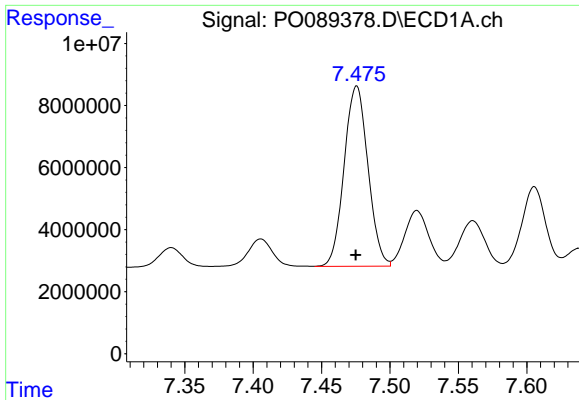
#31 AR-1260-1

R.T.: 7.218 min  
 Delta R.T.: 0.000 min  
 Response: 62806167  
 Conc: 466.42 ng/ml



#31 AR-1260-1

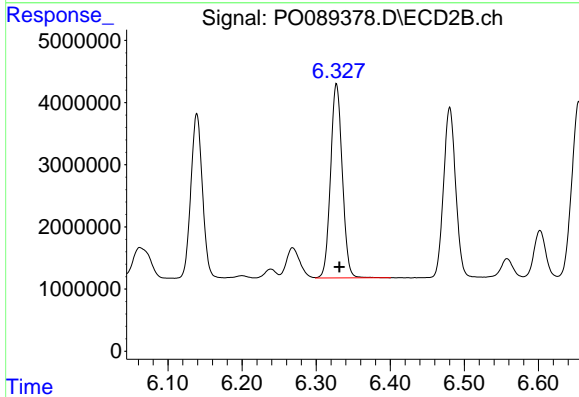
R.T.: 6.139 min  
 Delta R.T.: -0.004 min  
 Response: 28778730  
 Conc: 512.96 ng/ml



#32 AR-1260-2

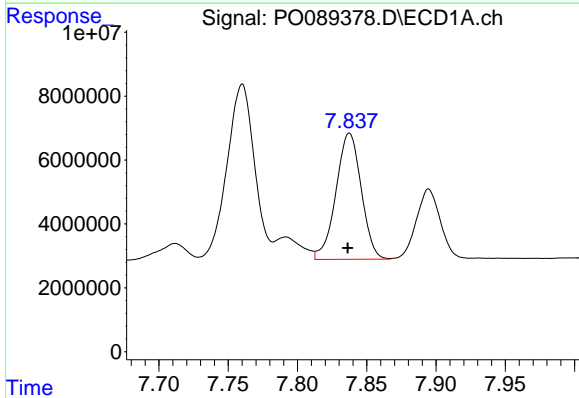
R.T.: 7.476 min  
 Delta R.T.: 0.000 min  
 Response: 70515982  
 Conc: 462.06 ng/ml

Instrument :  
 ECD\_O  
 ClientSampleId :  
 AR1660CCC500



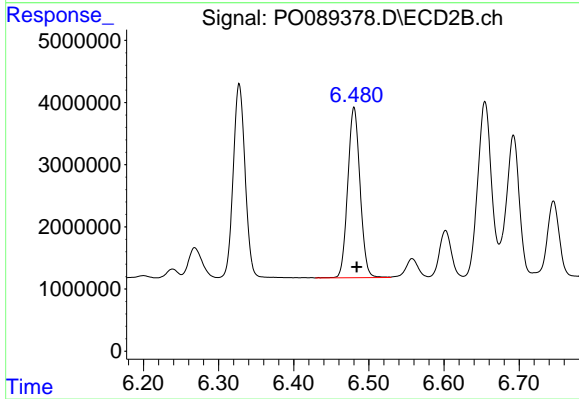
#32 AR-1260-2

R.T.: 6.327 min  
 Delta R.T.: -0.004 min  
 Response: 34337054  
 Conc: 505.31 ng/ml



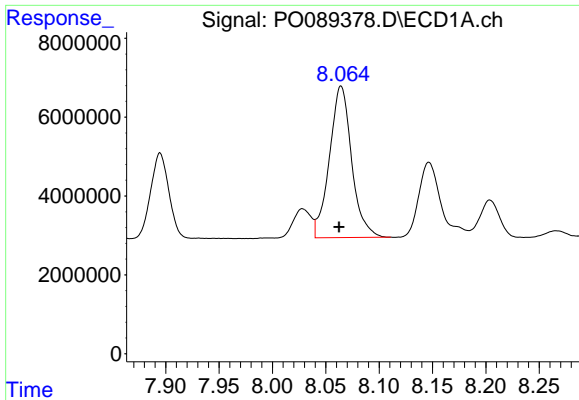
#33 AR-1260-3

R.T.: 7.837 min  
 Delta R.T.: 0.001 min  
 Response: 50204800  
 Conc: 449.30 ng/ml



#33 AR-1260-3

R.T.: 6.480 min  
 Delta R.T.: -0.004 min  
 Response: 31137071  
 Conc: 507.50 ng/ml

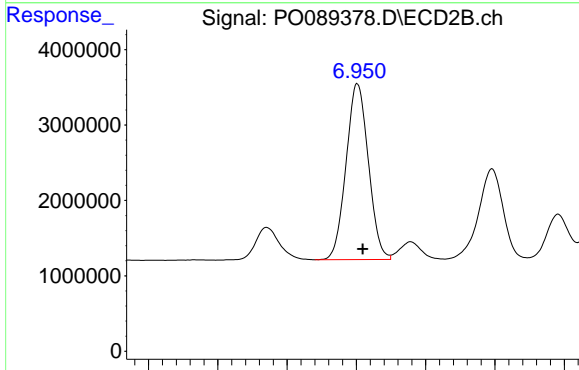


#34 AR-1260-4

R.T.: 8.064 min  
 Delta R.T.: 0.002 min  
 Response: 55739161  
 Conc: 451.52 ng/ml

Instrument :  
 ECD\_O  
 ClientSampleId :  
 AR1660CCC500

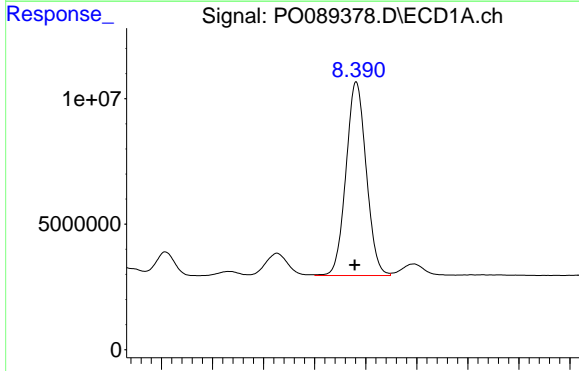
Time 7.90 7.95 8.00 8.05 8.10 8.15 8.20 8.25



#34 AR-1260-4

R.T.: 6.951 min  
 Delta R.T.: -0.004 min  
 Response: 26100305  
 Conc: 517.94 ng/ml

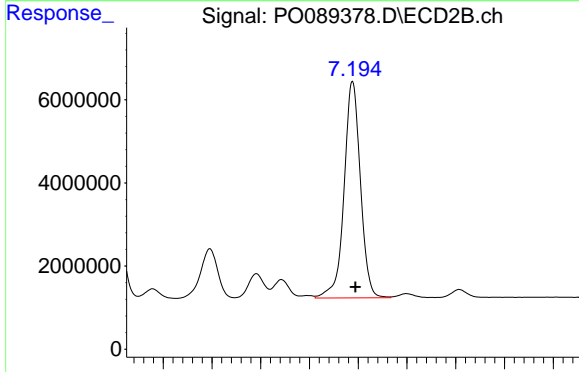
Time 6.80 6.85 6.90 6.95 7.00 7.05



#35 AR-1260-5

R.T.: 8.391 min  
 Delta R.T.: 0.001 min  
 Response: 106319331  
 Conc: 445.67 ng/ml

Time 8.20 8.25 8.30 8.35 8.40 8.45 8.50 8.55



#35 AR-1260-5

R.T.: 7.194 min  
 Delta R.T.: -0.003 min  
 Response: 60652911  
 Conc: 530.11 ng/ml

Time 7.00 7.05 7.10 7.15 7.20 7.25 7.30 7.35 7.40