

Data Path : Z:\pestpcbsrv\HPCHEM1\ECD_0\Data\P0090722\
 Data File : P0089379.D
 Signal(s) : Signal #1: ECD1A.ch Signal #2: ECD2B.ch
 Acq On : 07 Sep 2022 16:51
 Operator : YP/AJ
 Sample : AR1242CCC500
 Misc :
 ALS Vial : 4 Sample Multiplier: 1

Instrument :
 ECD_0
ClientSampleId :
 AR1242CCC500

Manual Integrations
APPROVED
 Reviewed By :Yogesh Patel 09/08/2022
 Supervised By :Ankita Jodhani 09/08/2022

Integration File signal 1: autoint1.e
 Integration File signal 2: autoint2.e
 Quant Time: Sep 07 17:19:40 2022
 Quant Method : Z:\pestpcbsrv\HPCHEM1\ECD_0\methods\P0082922.M
 Quant Title : GC EXTRACTABLES
 QLast Update : Mon Aug 29 17:48:02 2022
 Response via : Initial Calibration
 Integrator: ChemStation

Volume Inj. : 2 µl
 Signal #1 Phase : ZB-MR1 Signal #2 Phase: ZB-MR2
 Signal #1 Info : 30Mx0.32mmx 0.50µ Signal #2 Info : 30M x 0.32mm x 0.25µm

Compound	RT#1	RT#2	Resp#1	Resp#2	ng/ml	ng/ml

System Monitoring Compounds						
1) SA Tetrachlo...	4.430	3.586	189.1E6	54137652	50.439	56.086m
2) SA Decachlor...	10.259	8.568	100.8E6	48135002	43.802	54.433
Target Compounds						
16) L4 AR-1242-1	5.604	4.662	44426174	15618807	502.611	536.168
17) L4 AR-1242-2	5.627	4.680	62087199	21583290	501.648	544.831
18) L4 AR-1242-3	5.689	4.855	38987123	11563257	507.219	542.690
19) L4 AR-1242-4	5.789	4.939	31071400	11535507	500.281	530.152
20) L4 AR-1242-5	6.530	5.460	30625423	14221662	475.754	520.611

(f)=RT Delta > 1/2 Window (#)=Amounts differ by > 25% (m)=manual int.

Data Path : Z:\pestpcbsrv\HPCHEM1\ECD_O\Data\PO090722\
 Data File : PO089379.D
 Signal(s) : Signal #1: ECD1A.ch Signal #2: ECD2B.ch
 Acq On : 07 Sep 2022 16:51
 Operator : YP/AJ
 Sample : AR1242CCC500
 Misc :
 ALS Vial : 4 Sample Multiplier: 1

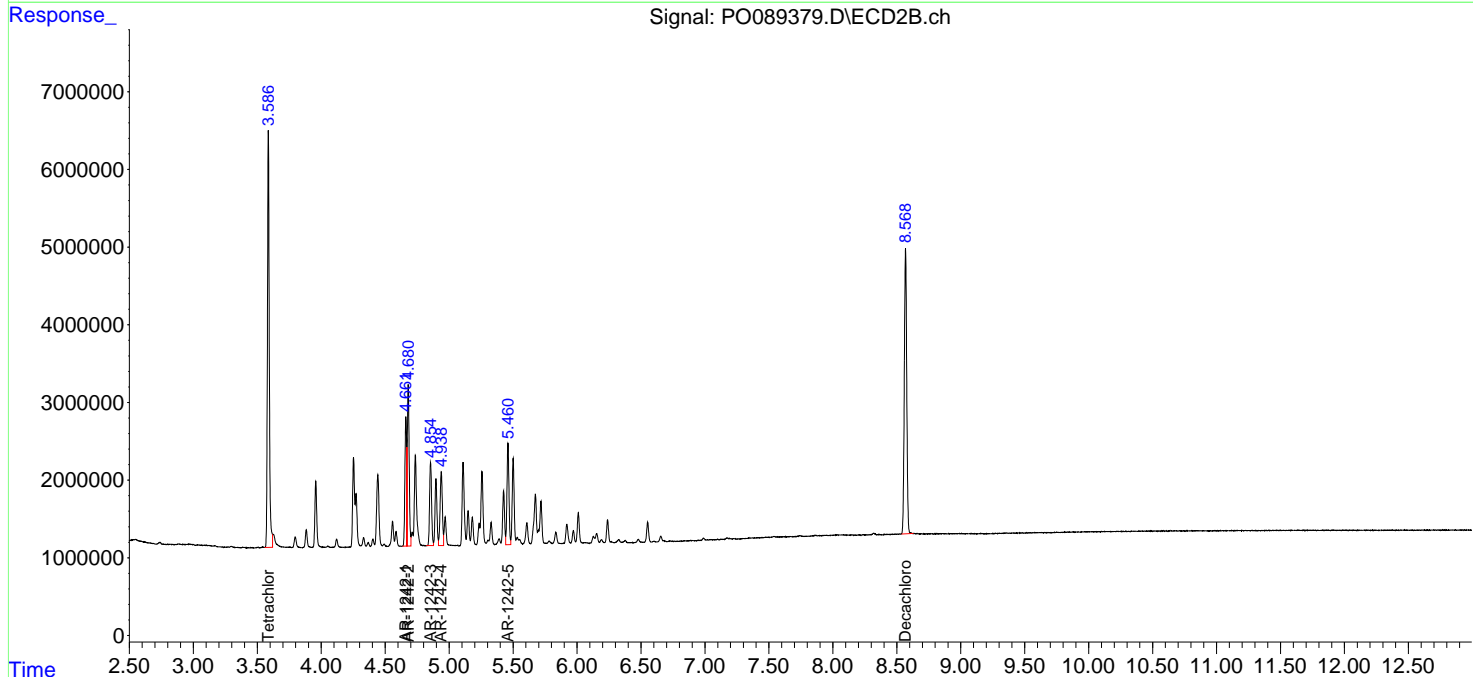
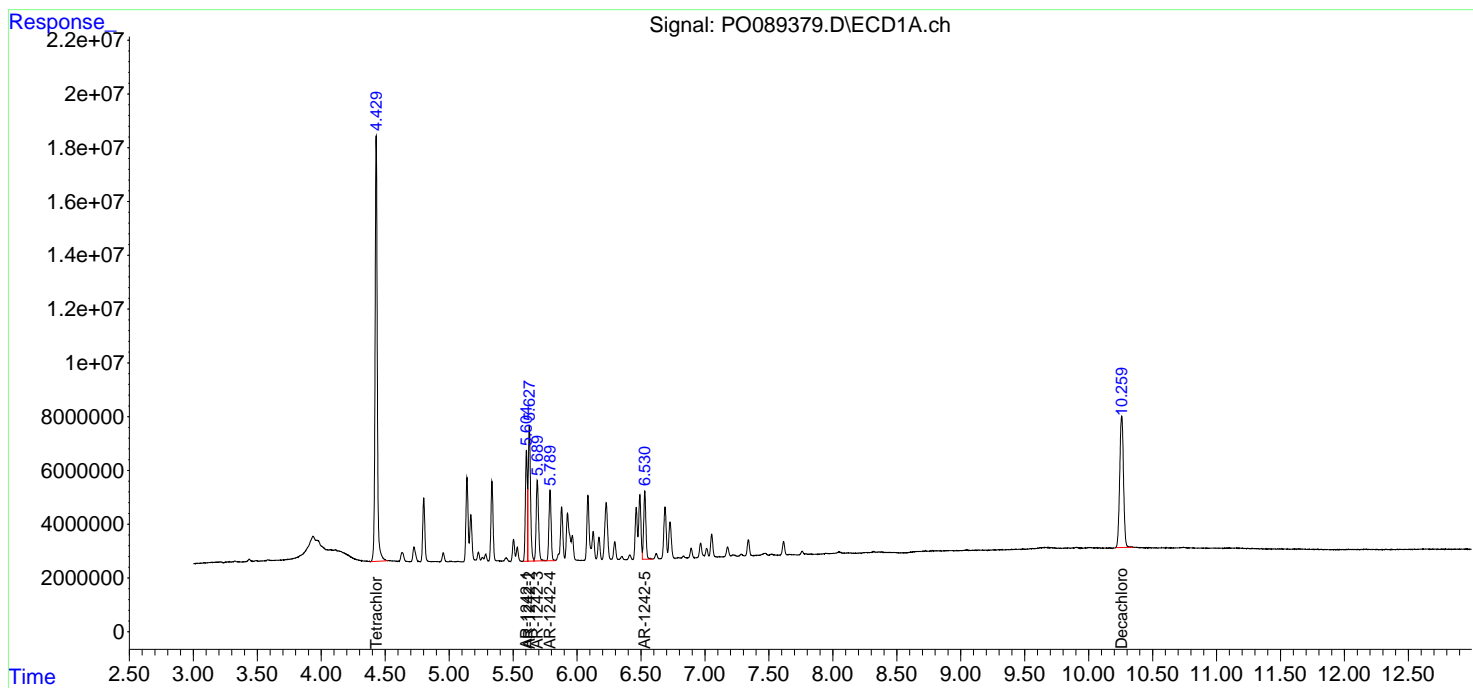
Instrument :
 ECD_O
 ClientSampleId :
 AR1242CCC500

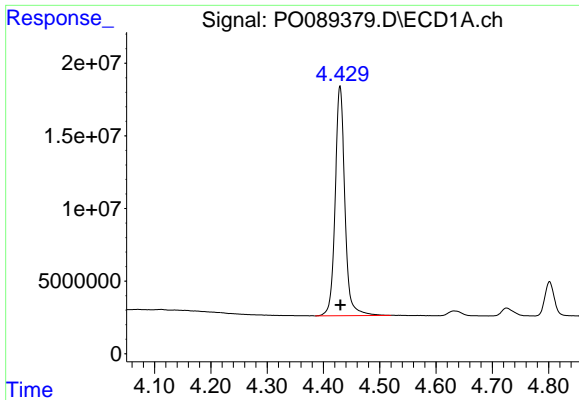
Manual Integrations
 APPROVED

Reviewed By :Yogesh Patel 09/08/2022
 Supervised By :Ankita Jodhani 09/08/2022

Integration File signal 1: autoint1.e
 Integration File signal 2: autoint2.e
 Quant Time: Sep 07 17:19:40 2022
 Quant Method : Z:\pestpcbsrv\HPCHEM1\ECD_O\methods\PO082922.M
 Quant Title : GC EXTRACTABLES
 QLast Update : Mon Aug 29 17:48:02 2022
 Response via : Initial Calibration
 Integrator: ChemStation

Volume Inj. : 2 µl
 Signal #1 Phase : ZB-MR1 Signal #2 Phase: ZB-MR2
 Signal #1 Info : 30Mx0.32mmx 0.50µ Signal #2 Info : 30M x 0.32mm x 0.25µm



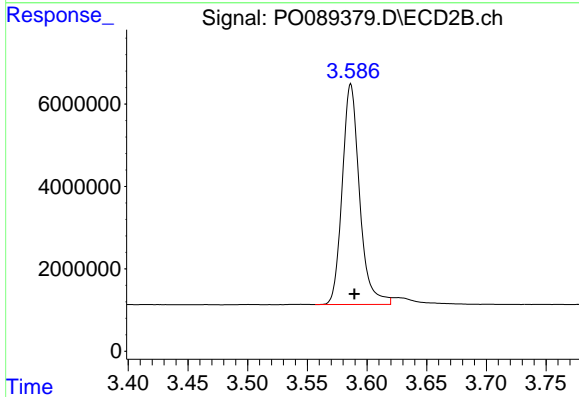


#1 Tetrachloro-m-xylene
 R.T.: 4.430 min
 Delta R.T.: 0.000 min
 Response: 189128320
 Conc: 50.44 ng/ml

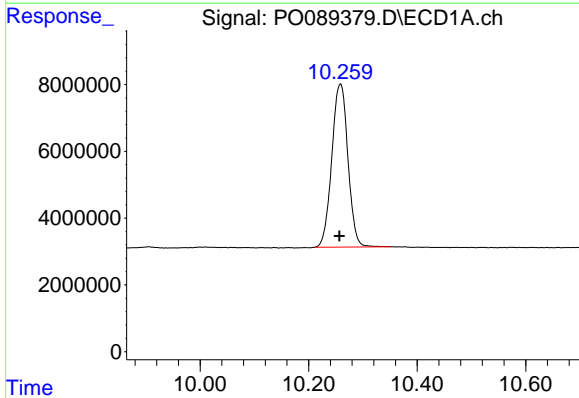
Instrument :
 ECD_O
 ClientSampleId :
 AR1242CCC500

Manual Integrations
 APPROVED

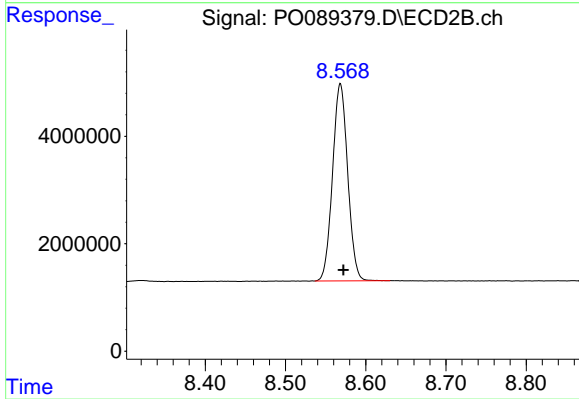
Reviewed By :Yogesh Patel 09/08/2022
 Supervised By :Ankita Jodhani 09/08/2022



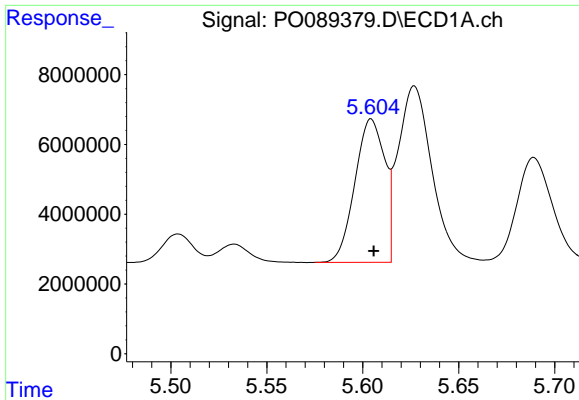
#1 Tetrachloro-m-xylene
 R.T.: 3.586 min
 Delta R.T.: -0.003 min
 Response: 54137652
 Conc: 56.09 ng/ml m



#2 Decachlorobiphenyl
 R.T.: 10.259 min
 Delta R.T.: 0.002 min
 Response: 100845072
 Conc: 43.80 ng/ml



#2 Decachlorobiphenyl
 R.T.: 8.568 min
 Delta R.T.: -0.004 min
 Response: 48135002
 Conc: 54.43 ng/ml



#16 AR-1242-1

R.T.: 5.604 min
 Delta R.T.: -0.001 min
 Response: 44426174
 Conc: 502.61 ng/ml

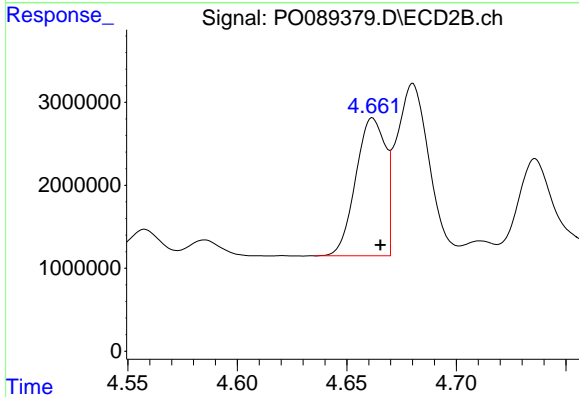
Instrument :

ECD_O

ClientSampleId :
 AR1242CCC500

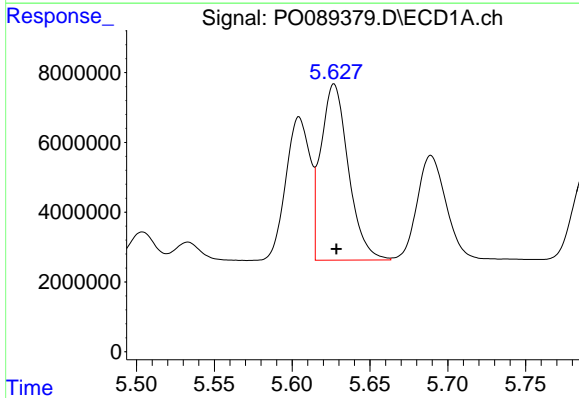
Manual Integrations
 APPROVED

Reviewed By :Yogesh Patel 09/08/2022
 Supervised By :Ankita Jodhani 09/08/2022



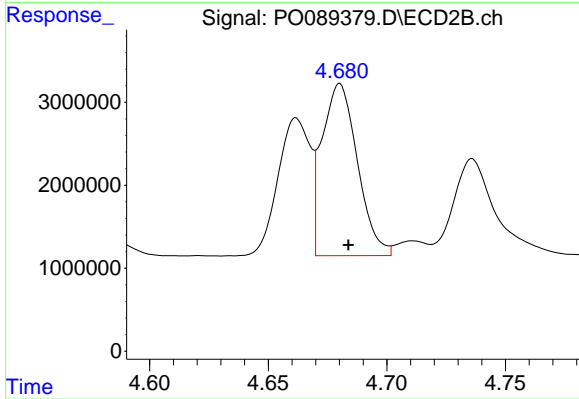
#16 AR-1242-1

R.T.: 4.662 min
 Delta R.T.: -0.004 min
 Response: 15618807
 Conc: 536.17 ng/ml



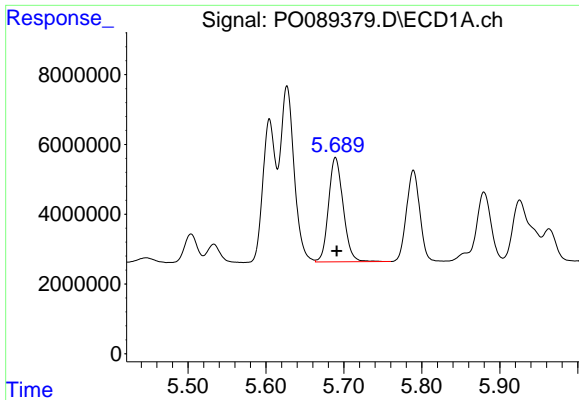
#17 AR-1242-2

R.T.: 5.627 min
 Delta R.T.: -0.002 min
 Response: 62087199
 Conc: 501.65 ng/ml



#17 AR-1242-2

R.T.: 4.680 min
 Delta R.T.: -0.004 min
 Response: 21583290
 Conc: 544.83 ng/ml



#18 AR-1242-3

R.T.: 5.689 min
 Delta R.T.: -0.002 min
 Response: 38987123
 Conc: 507.22 ng/ml

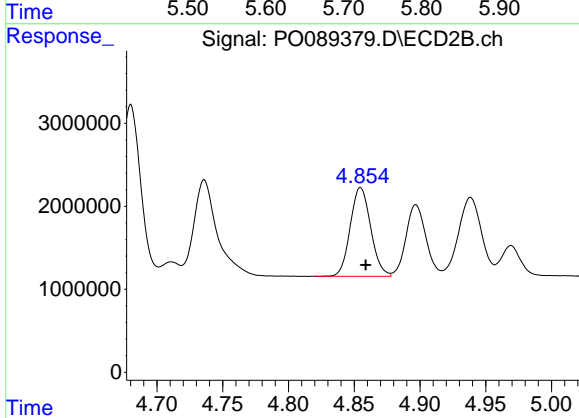
Instrument :

ECD_O

ClientSampleId :
 AR1242CCC500

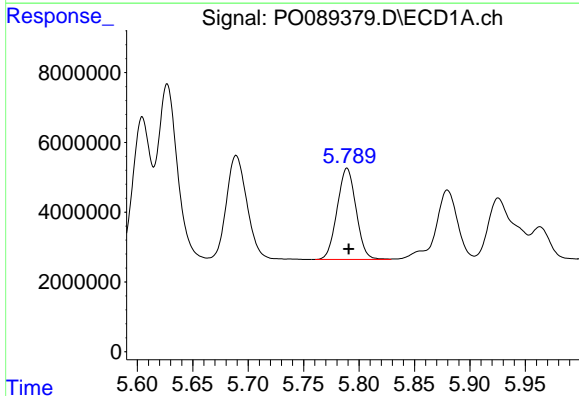
Manual Integrations
 APPROVED

Reviewed By :Yogesh Patel 09/08/2022
 Supervised By :Ankita Jodhani 09/08/2022



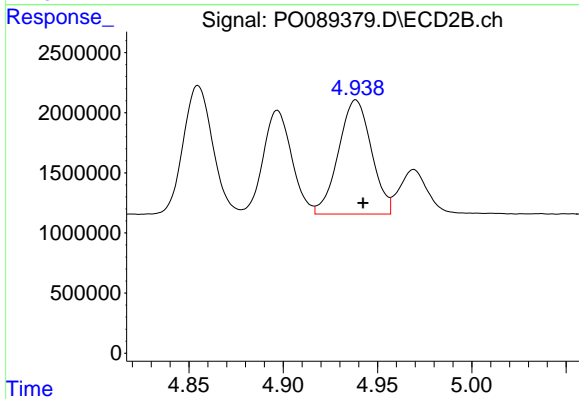
#18 AR-1242-3

R.T.: 4.855 min
 Delta R.T.: -0.004 min
 Response: 11563257
 Conc: 542.69 ng/ml



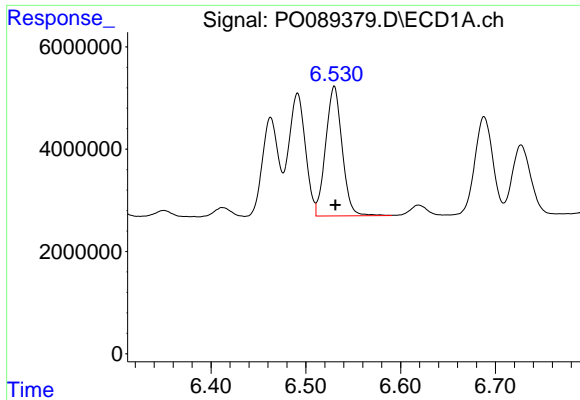
#19 AR-1242-4

R.T.: 5.789 min
 Delta R.T.: -0.002 min
 Response: 31071400
 Conc: 500.28 ng/ml



#19 AR-1242-4

R.T.: 4.939 min
 Delta R.T.: -0.004 min
 Response: 11535507
 Conc: 530.15 ng/ml



#20 AR-1242-5

R.T.: 6.530 min
 Delta R.T.: -0.001 min
 Response: 30625423
 Conc: 475.75 ng/ml

Instrument :

ECD_O

ClientSampleId :

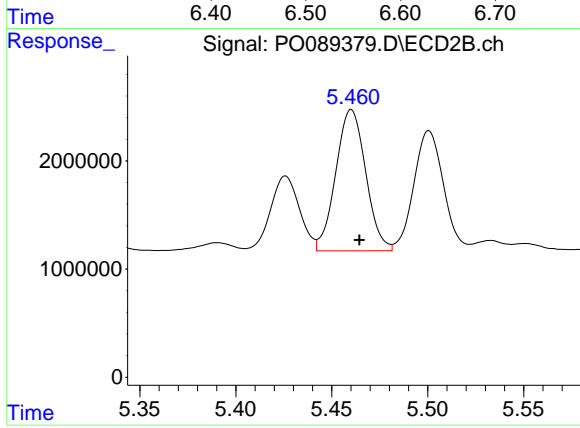
AR1242CCC500

Manual Integrations

APPROVED

Reviewed By :Yogesh Patel 09/08/2022

Supervised By :Ankita Jodhani 09/08/2022



#20 AR-1242-5

R.T.: 5.460 min
 Delta R.T.: -0.004 min
 Response: 14221662
 Conc: 520.61 ng/ml