

Data Path : Z:\pestpcbsrv\HPCHEM1\ECD_O\Data\P0090722\
 Data File : P0089387.D
 Signal(s) : Signal #1: ECD1A.ch Signal #2: ECD2B.ch
 Acq On : 07 Sep 2022 19:09
 Operator : YP/AJ
 Sample : PB147509BS
 Misc :
 ALS Vial : 21 Sample Multiplier: 1

Instrument :
 ECD_O
 ClientSampleId :
 PB147509BS

Integration File signal 1: autoint1.e
 Integration File signal 2: autoint2.e
 Quant Time: Sep 08 03:25:08 2022
 Quant Method : Z:\pestpcbsrv\HPCHEM1\ECD_O\methods\P0082922.M
 Quant Title : GC EXTRACTABLES
 QLast Update : Mon Aug 29 17:48:02 2022
 Response via : Initial Calibration
 Integrator: ChemStation

Volume Inj. : 2 µl
 Signal #1 Phase : ZB-MR1 Signal #2 Phase: ZB-MR2
 Signal #1 Info : 30Mx0.32mmx 0.50µ Signal #2 Info : 30M x 0.32mm x 0.25µm

Compound	RT#1	RT#2	Resp#1	Resp#2	ng/ml	ng/ml

System Monitoring Compounds						
1) SA Tetrachlo...	4.430	3.588	79223657	22883000	21.128	23.706
2) SA Decachlor...	10.255	8.567	45500180	21614826	19.763	24.443
Target Compounds						
3) L1 AR-1016-1	5.604	4.661	55033107	19151019	489.462	530.305
4) L1 AR-1016-2	5.626	4.680	77411698	26835220	491.196	543.560
5) L1 AR-1016-3	5.690	4.855	48203547	14229534	494.254	535.002
6) L1 AR-1016-4	5.789	4.897	38645096	11514728	491.127	534.990
7) L1 AR-1016-5	6.085	5.109	37410430	14554107	487.473	498.808
31) L7 AR-1260-1	7.217	6.138	59303738	27227595	440.412	485.311
32) L7 AR-1260-2	7.474	6.327	68803051	32864463	450.832	483.642
33) L7 AR-1260-3	7.836	6.479	42923592	30190182	384.134	492.066 #
34) L7 AR-1260-4	8.063	6.950	50161491	22386358	406.333	444.241
35) L7 AR-1260-5	8.388	7.193	93211713	53689058	390.729	469.245

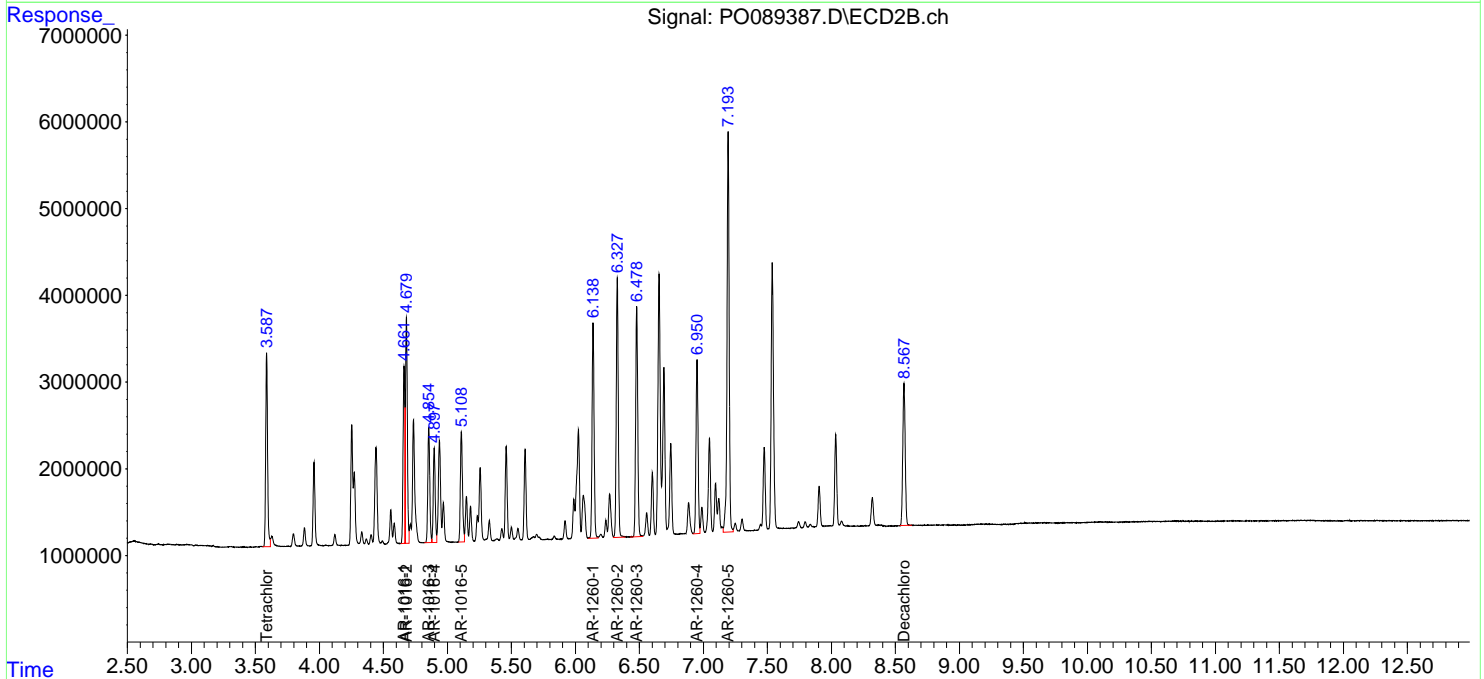
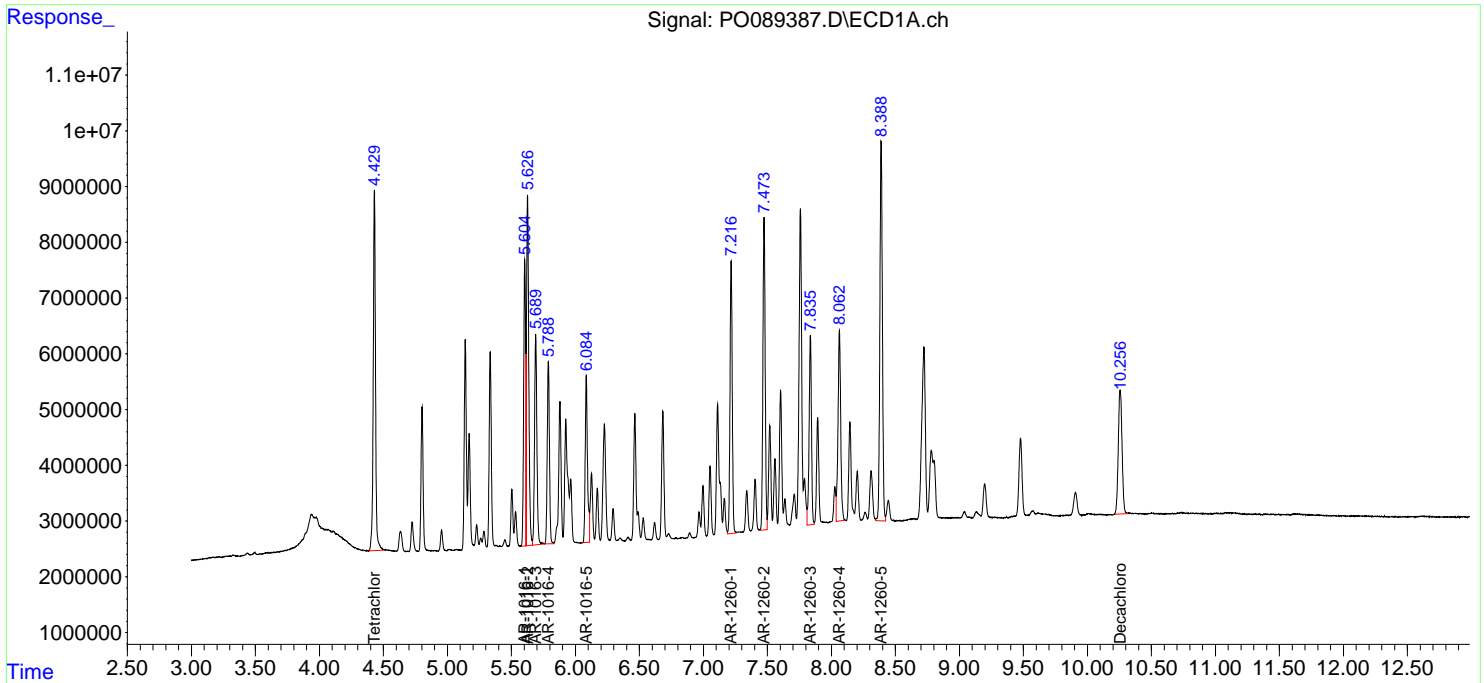
(f)=RT Delta > 1/2 Window (#)=Amounts differ by > 25% (m)=manual int.

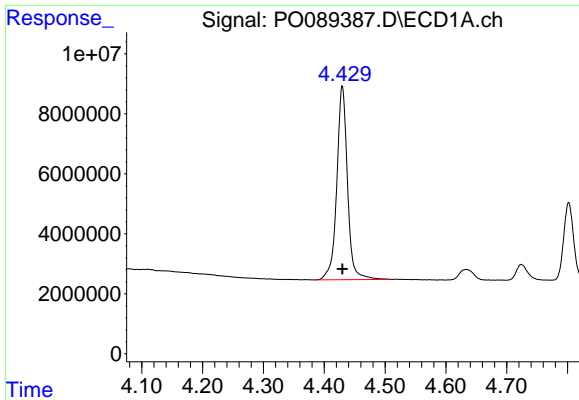
Data Path : Z:\pestpcbsrv\HPCHEM1\ECD_O\Data\PO090722\
 Data File : PO089387.D
 Signal(s) : Signal #1: ECD1A.ch Signal #2: ECD2B.ch
 Acq On : 07 Sep 2022 19:09
 Operator : YP/AJ
 Sample : PB147509BS
 Misc :
 ALS Vial : 21 Sample Multiplier: 1

Instrument :
 ECD_O
 ClientSampleId :
 PB147509BS

Integration File signal 1: autoint1.e
 Integration File signal 2: autoint2.e
 Quant Time: Sep 08 03:25:08 2022
 Quant Method : Z:\pestpcbsrv\HPCHEM1\ECD_O\methods\PO082922.M
 Quant Title : GC EXTRACTABLES
 QLast Update : Mon Aug 29 17:48:02 2022
 Response via : Initial Calibration
 Integrator: ChemStation

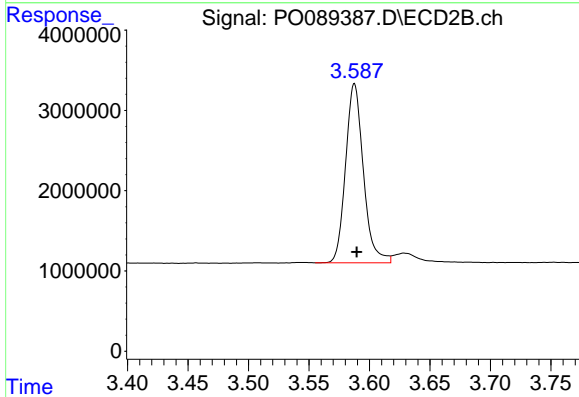
Volume Inj. : 2 µl
 Signal #1 Phase : ZB-MR1 Signal #2 Phase: ZB-MR2
 Signal #1 Info : 30Mx0.32mmx 0.50µ Signal #2 Info : 30M x 0.32mm x 0.25µm



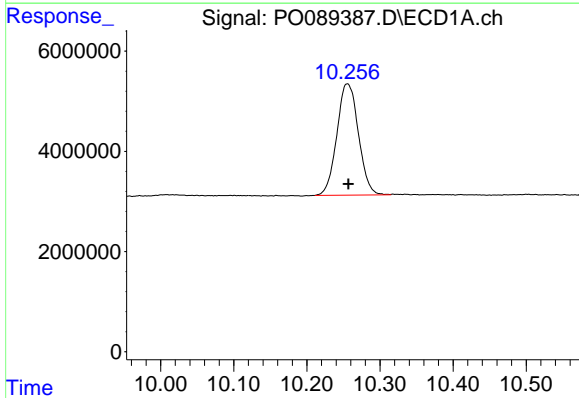


#1 Tetrachloro-m-xylene
 R.T.: 4.430 min
 Delta R.T.: 0.000 min
 Response: 79223657
 Conc: 21.13 ng/ml

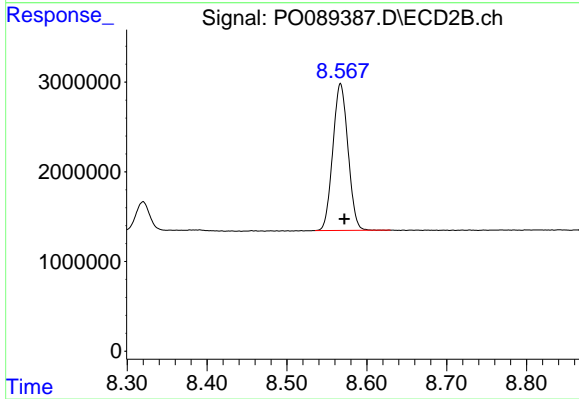
Instrument :
 ECD_O
 ClientSampleId :
 PB147509BS



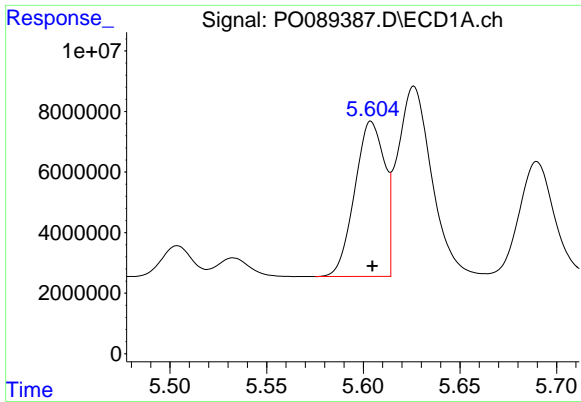
#1 Tetrachloro-m-xylene
 R.T.: 3.588 min
 Delta R.T.: -0.002 min
 Response: 22883000
 Conc: 23.71 ng/ml



#2 Decachlorobiphenyl
 R.T.: 10.255 min
 Delta R.T.: -0.001 min
 Response: 45500180
 Conc: 19.76 ng/ml



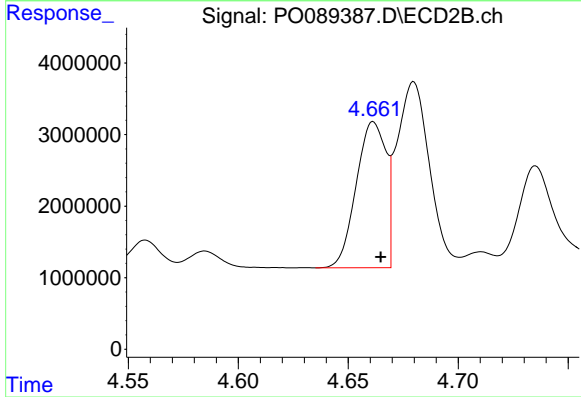
#2 Decachlorobiphenyl
 R.T.: 8.567 min
 Delta R.T.: -0.005 min
 Response: 21614826
 Conc: 24.44 ng/ml



#3 AR-1016-1

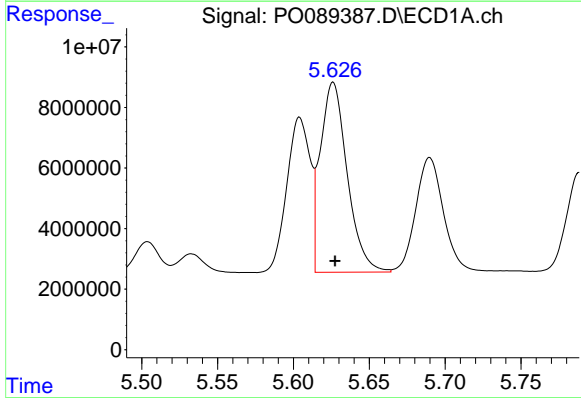
R.T.: 5.604 min
 Delta R.T.: 0.000 min
 Response: 55033107
 Conc: 489.46 ng/ml

Instrument :
 ECD_O
 ClientSampleId :
 PB147509BS



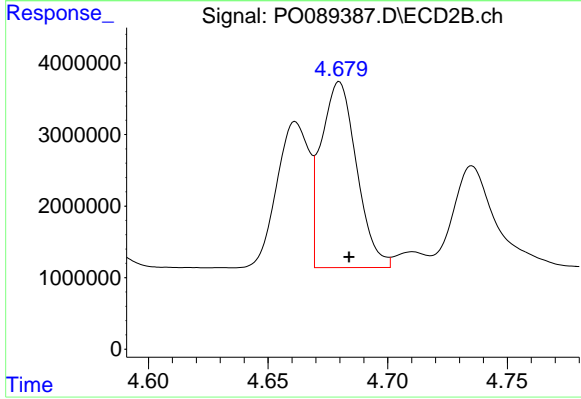
#3 AR-1016-1

R.T.: 4.661 min
 Delta R.T.: -0.003 min
 Response: 19151019
 Conc: 530.31 ng/ml



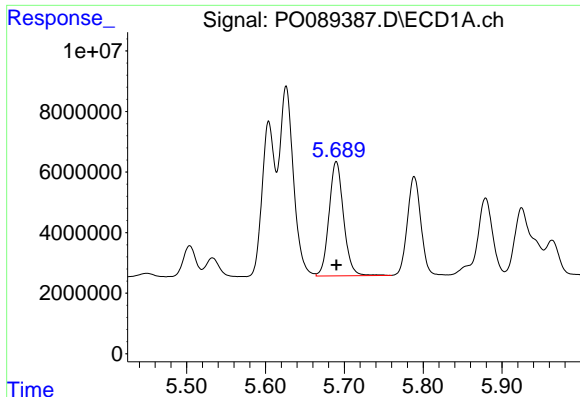
#4 AR-1016-2

R.T.: 5.626 min
 Delta R.T.: -0.001 min
 Response: 77411698
 Conc: 491.20 ng/ml



#4 AR-1016-2

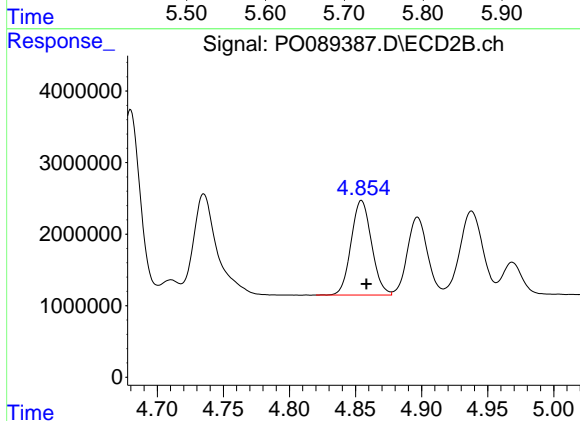
R.T.: 4.680 min
 Delta R.T.: -0.004 min
 Response: 26835220
 Conc: 543.56 ng/ml



#5 AR-1016-3

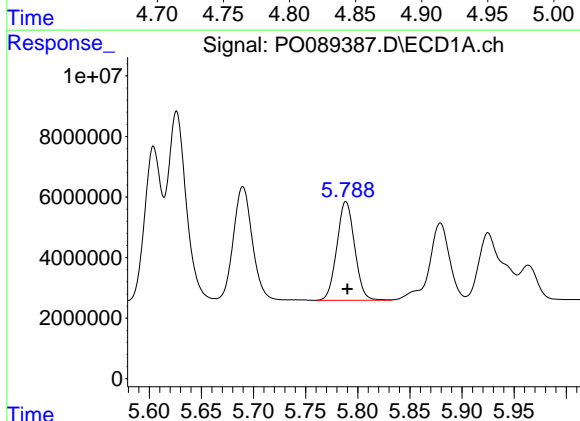
R.T.: 5.690 min
 Delta R.T.: 0.000 min
 Response: 48203547
 Conc: 494.25 ng/ml

Instrument :
 ECD_O
 ClientSampleId :
 PB147509BS



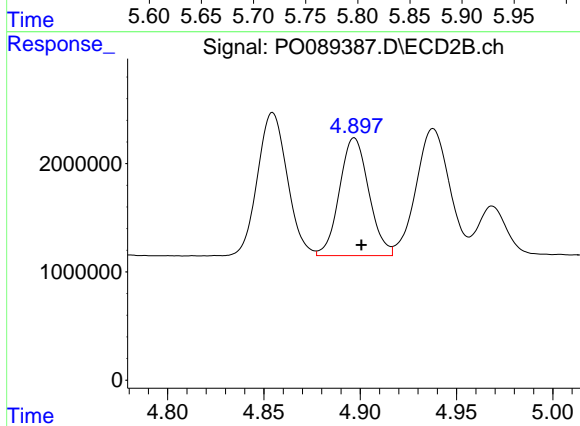
#5 AR-1016-3

R.T.: 4.855 min
 Delta R.T.: -0.004 min
 Response: 14229534
 Conc: 535.00 ng/ml



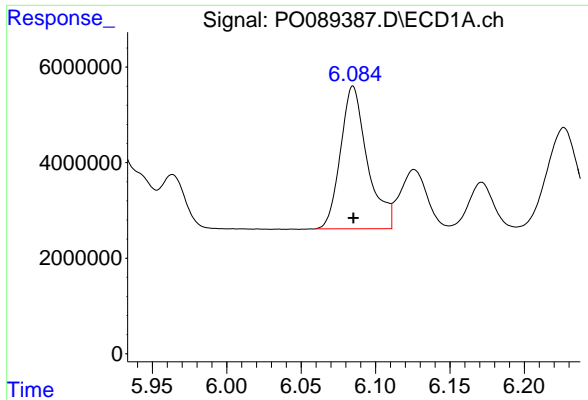
#6 AR-1016-4

R.T.: 5.789 min
 Delta R.T.: -0.001 min
 Response: 38645096
 Conc: 491.13 ng/ml



#6 AR-1016-4

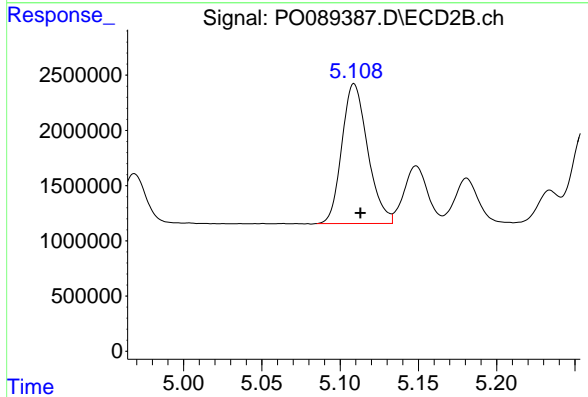
R.T.: 4.897 min
 Delta R.T.: -0.004 min
 Response: 11514728
 Conc: 534.99 ng/ml



#7 AR-1016-5

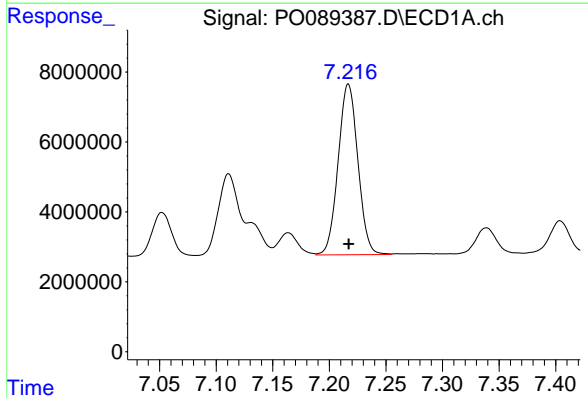
R.T.: 6.085 min
 Delta R.T.: 0.000 min
 Response: 37410430
 Conc: 487.47 ng/ml

Instrument :
 ECD_O
 ClientSampleId :
 PB147509BS



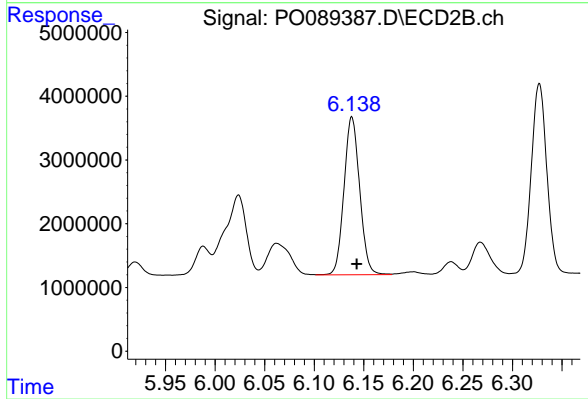
#7 AR-1016-5

R.T.: 5.109 min
 Delta R.T.: -0.004 min
 Response: 14554107
 Conc: 498.81 ng/ml



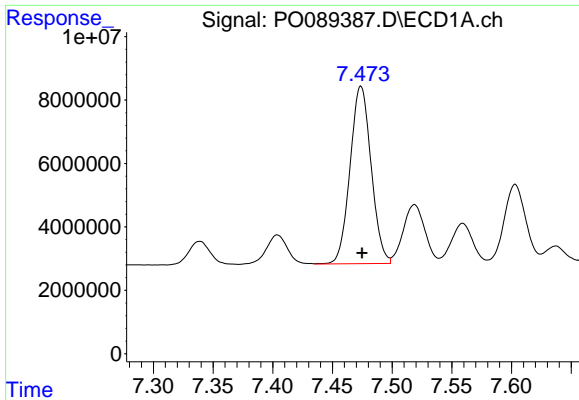
#31 AR-1260-1

R.T.: 7.217 min
 Delta R.T.: 0.000 min
 Response: 59303738
 Conc: 440.41 ng/ml



#31 AR-1260-1

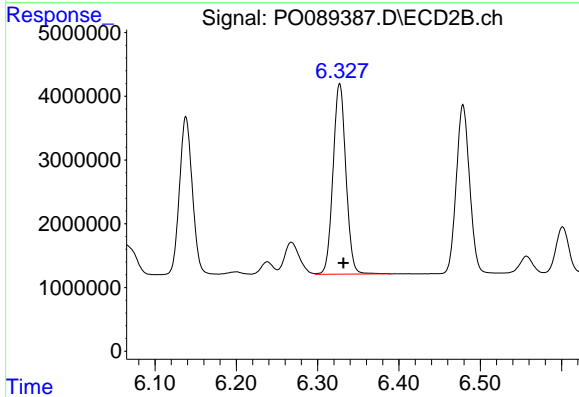
R.T.: 6.138 min
 Delta R.T.: -0.005 min
 Response: 27227595
 Conc: 485.31 ng/ml



#32 AR-1260-2

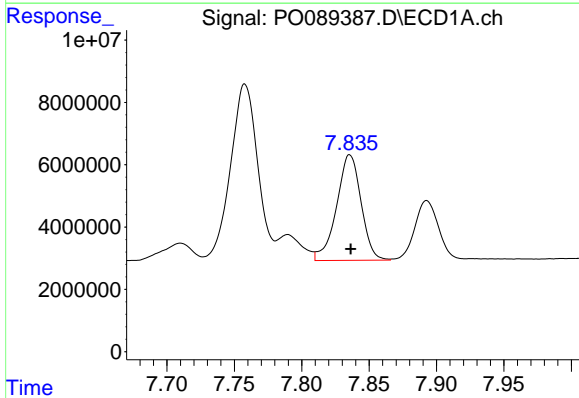
R.T.: 7.474 min
 Delta R.T.: -0.001 min
 Response: 68803051
 Conc: 450.83 ng/ml

Instrument :
 ECD_O
 ClientSampleId :
 PB147509BS



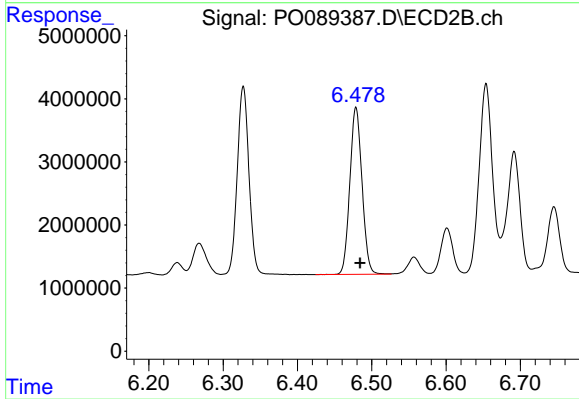
#32 AR-1260-2

R.T.: 6.327 min
 Delta R.T.: -0.004 min
 Response: 32864463
 Conc: 483.64 ng/ml



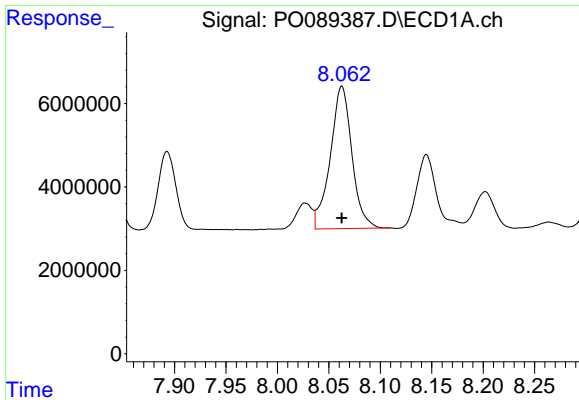
#33 AR-1260-3

R.T.: 7.836 min
 Delta R.T.: 0.000 min
 Response: 42923592
 Conc: 384.13 ng/ml



#33 AR-1260-3

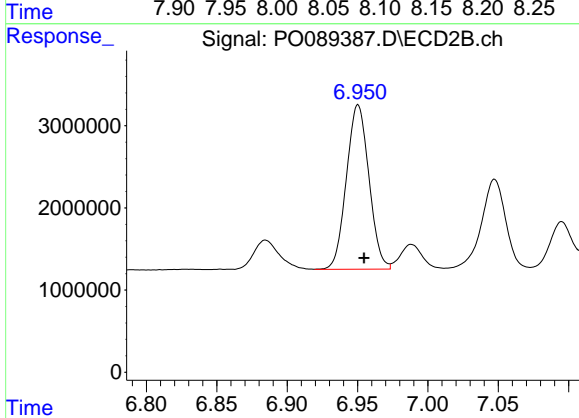
R.T.: 6.479 min
 Delta R.T.: -0.005 min
 Response: 30190182
 Conc: 492.07 ng/ml



#34 AR-1260-4

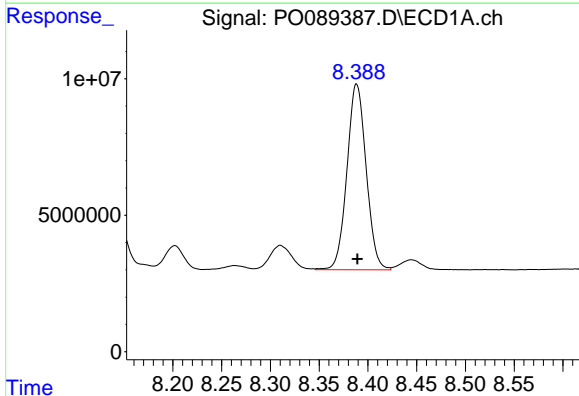
R.T.: 8.063 min
 Delta R.T.: 0.000 min
 Response: 50161491
 Conc: 406.33 ng/ml

Instrument :
 ECD_O
 ClientSampleId :
 PB147509BS



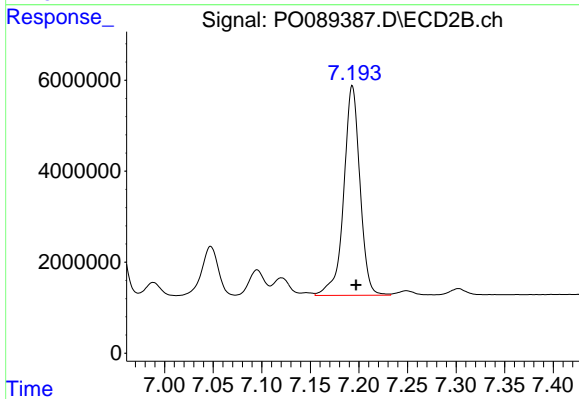
#34 AR-1260-4

R.T.: 6.950 min
 Delta R.T.: -0.004 min
 Response: 22386358
 Conc: 444.24 ng/ml



#35 AR-1260-5

R.T.: 8.388 min
 Delta R.T.: 0.000 min
 Response: 93211713
 Conc: 390.73 ng/ml



#35 AR-1260-5

R.T.: 7.193 min
 Delta R.T.: -0.004 min
 Response: 53689058
 Conc: 469.25 ng/ml