

Data Path : Z:\pestpcbsrv\HPCHEM1\ECD\_0\Data\P0090723\  
 Data File : P0097793.D  
 Signal(s) : Signal #1: ECD1A.ch Signal #2: ECD2B.ch  
 Acq On : 07 Sep 2023 18:41  
 Operator : YP/AJ  
 Sample : 04293-01  
 Misc :  
 ALS Vial : 9 Sample Multiplier: 1

**Instrument :**  
 ECD\_0  
**ClientSampleId :**  
 SOIL

**Manual Integrations**  
**APPROVED**

Reviewed By :Yogesh Patel 09/08/2023  
 Supervised By :Ankita Jodhani 09/08/2023

Integration File signal 1: autoint1.e  
 Integration File signal 2: autoint2.e  
 Quant Time: Sep 08 01:57:53 2023  
 Quant Method : Z:\pestpcbsrv\HPCHEM1\ECD\_0\methods\P0090623.M  
 Quant Title : GC EXTRACTABLES  
 QLast Update : Thu Sep 07 02:56:18 2023  
 Response via : Initial Calibration  
 Integrator: ChemStation

Volume Inj. : 2 µl  
 Signal #1 Phase : ZB-MR1 Signal #2 Phase: ZB-MR2  
 Signal #1 Info : 30Mx0.32mmx 0.50µ Signal #2 Info : 30M x 0.32mm x 0.25µm

Compound	RT#1	RT#2	Resp#1	Resp#2	ng/ml	ng/ml
-----						
System Monitoring Compounds						
1) SA Tetrachlo...	4.443	3.623	58183646	14151848	14.604	14.777
2) SA Decachlor...	10.294	8.661	17079298	7775020	9.141	9.100

Target Compounds

(f)=RT Delta > 1/2 Window (#)=Amounts differ by > 25% (m)=manual int.

Data Path : Z:\pestpcbsrv\HPCHEM1\ECD\_0\Data\PO090723\  
 Data File : PO097793.D  
 Signal(s) : Signal #1: ECD1A.ch Signal #2: ECD2B.ch  
 Acq On : 07 Sep 2023 18:41  
 Operator : YP/AJ  
 Sample : 04293-01  
 Misc :  
 ALS Vial : 9 Sample Multiplier: 1

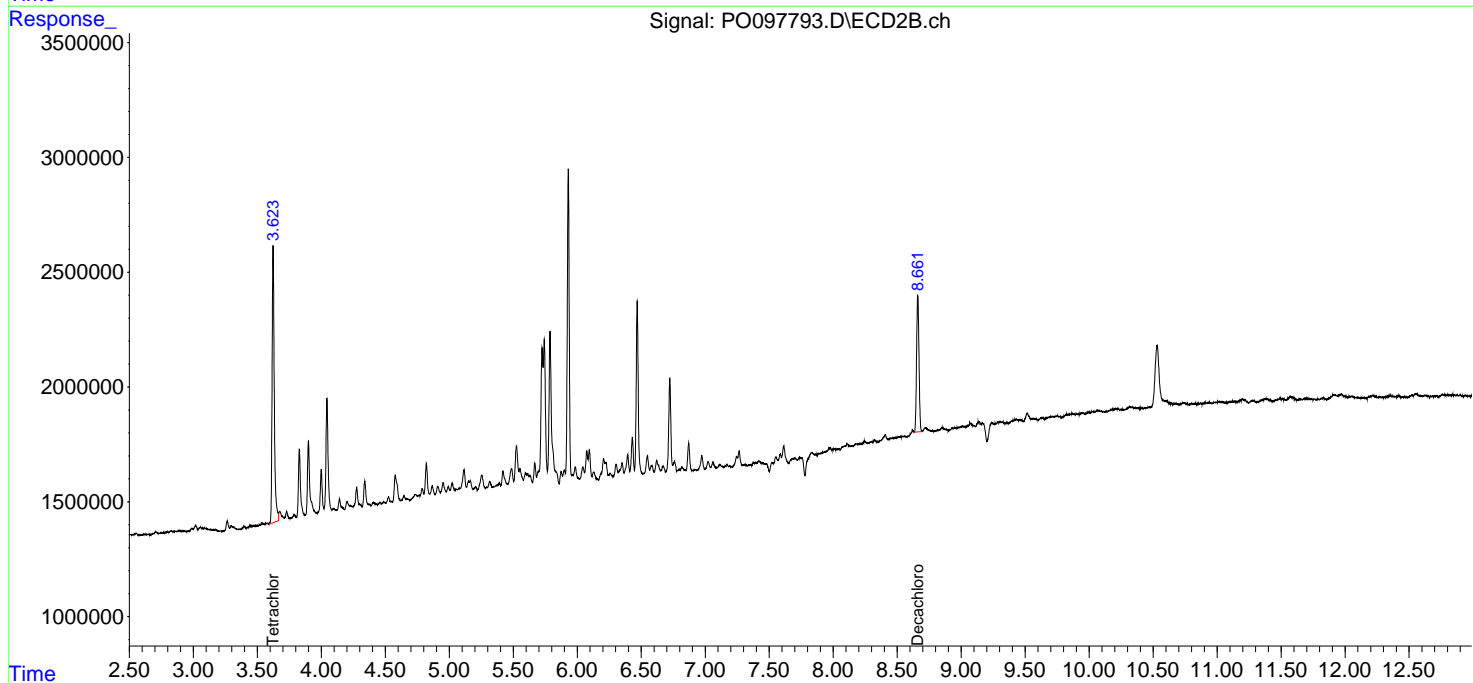
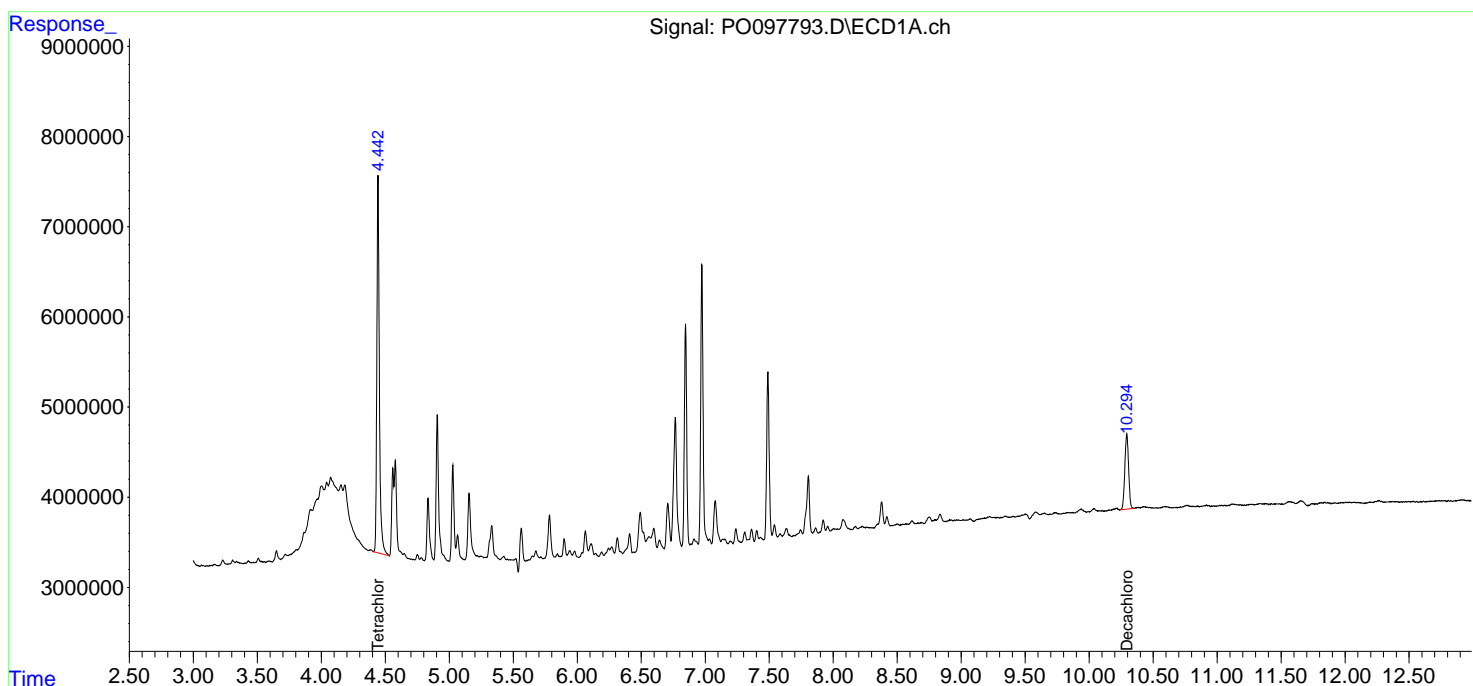
Instrument :  
 ECD\_0  
 ClientSampleID :  
 SOIL

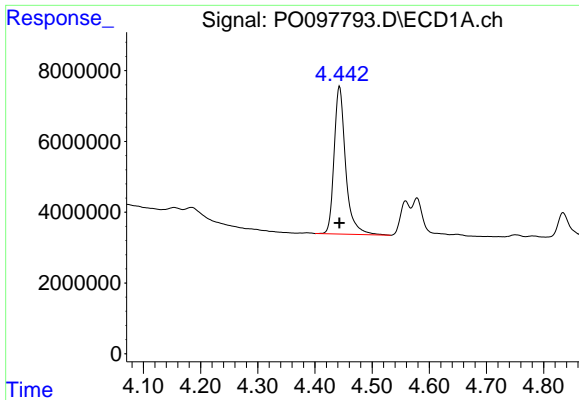
Manual Integrations  
 APPROVED

Reviewed By :Yogesh Patel 09/08/2023  
 Supervised By :Ankita Jodhani 09/08/2023

Integration File signal 1: autoint1.e  
 Integration File signal 2: autoint2.e  
 Quant Time: Sep 08 01:57:53 2023  
 Quant Method : Z:\pestpcbsrv\HPCHEM1\ECD\_0\methods\PO090623.M  
 Quant Title : GC EXTRACTABLES  
 QLast Update : Thu Sep 07 02:56:18 2023  
 Response via : Initial Calibration  
 Integrator: ChemStation

Volume Inj. : 2 µl  
 Signal #1 Phase : ZB-MR1 Signal #2 Phase: ZB-MR2  
 Signal #1 Info : 30Mx0.32mmx 0.50µ Signal #2 Info : 30M x 0.32mm x 0.25µm





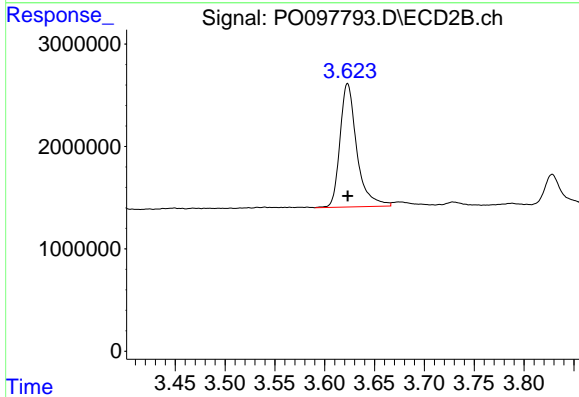
#1 Tetrachloro-m-xylene

R.T.: 4.443 min  
 Delta R.T.: 0.000 min  
 Response: 58183646  
 Conc: 14.60 ng/ml

Instrument :  
 ECD\_O  
 ClientSampleId :  
 SOIL

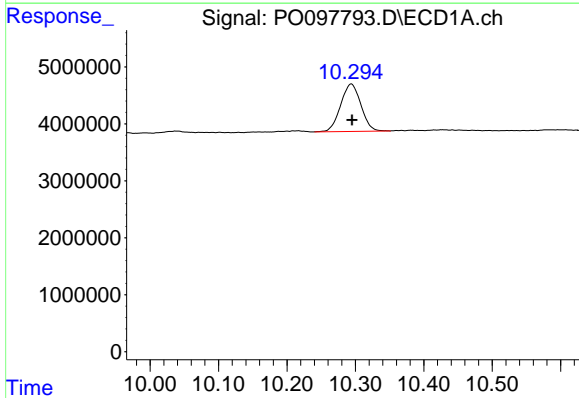
Manual Integrations  
 APPROVED

Reviewed By :Yogesh Patel 09/08/2023  
 Supervised By :Ankita Jodhani 09/08/2023



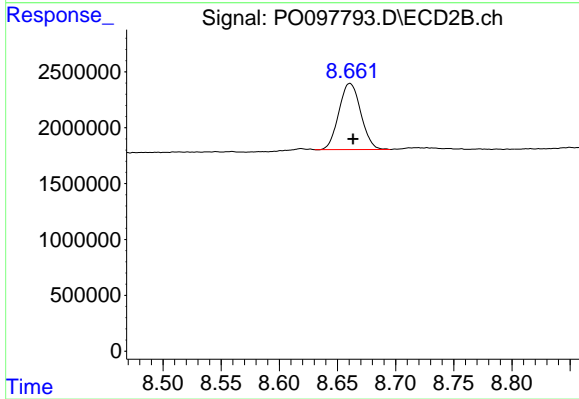
#1 Tetrachloro-m-xylene

R.T.: 3.623 min  
 Delta R.T.: 0.000 min  
 Response: 14151848  
 Conc: 14.78 ng/ml



#2 Decachlorobiphenyl

R.T.: 10.294 min  
 Delta R.T.: 0.000 min  
 Response: 17079298  
 Conc: 9.14 ng/ml



#2 Decachlorobiphenyl

R.T.: 8.661 min  
 Delta R.T.: -0.003 min  
 Response: 7775020  
 Conc: 9.10 ng/ml