

Data Path : Z:\pestpcbsrv\HPCHEM1\ECD_0\Data\P0090723\
 Data File : P0097818.D
 Signal(s) : Signal #1: ECD1A.ch Signal #2: ECD2B.ch
 Acq On : 08 Sep 2023 02:28
 Operator : YP/AJ
 Sample : AR1248CCC500
 Misc :
 ALS Vial : 5 Sample Multiplier: 1

Instrument :
 ECD_0
 ClientSampleId :
 AR1248CCC500

Integration File signal 1: autoint1.e
 Integration File signal 2: autoint2.e
 Quant Time: Sep 08 03:14:33 2023
 Quant Method : Z:\pestpcbsrv\HPCHEM1\ECD_0\methods\P0090623.M
 Quant Title : GC EXTRACTABLES
 QLast Update : Thu Sep 07 02:56:18 2023
 Response via : Initial Calibration
 Integrator: ChemStation

Volume Inj. : 2 µl
 Signal #1 Phase : ZB-MR1 Signal #2 Phase: ZB-MR2
 Signal #1 Info : 30Mx0.32mmx 0.50µ Signal #2 Info : 30M x 0.32mm x 0.25µm

Compound	RT#1	RT#2	Resp#1	Resp#2	ng/ml	ng/ml

System Monitoring Compounds						
1) SA Tetrachlo...	4.441	3.622	204.2E6	51596412	51.255	53.876
2) SA Decachlor...	10.289	8.657	97456249	43968528	52.159	51.462
Target Compounds						
21) L5 AR-1248-1	5.618	4.712	36256708	11116991	534.337	541.170
22) L5 AR-1248-2	5.895	4.950	54879721	16120908	507.473	529.115
23) L5 AR-1248-3	6.100	4.992	57829751	17097687	515.247	536.869
24) L5 AR-1248-4	6.507	5.164	56885833	20074121	550.265	536.419
25) L5 AR-1248-5	6.546	5.559	57279431	18619055	513.842	558.757

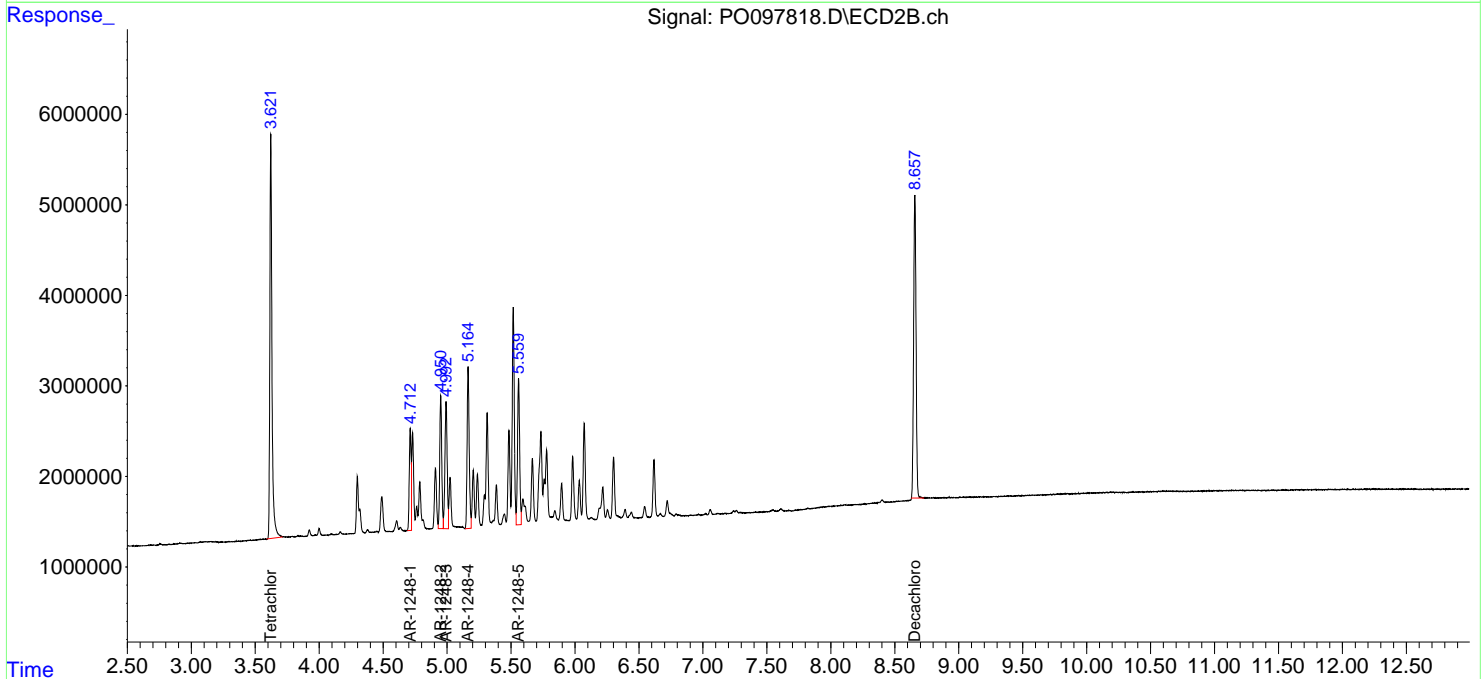
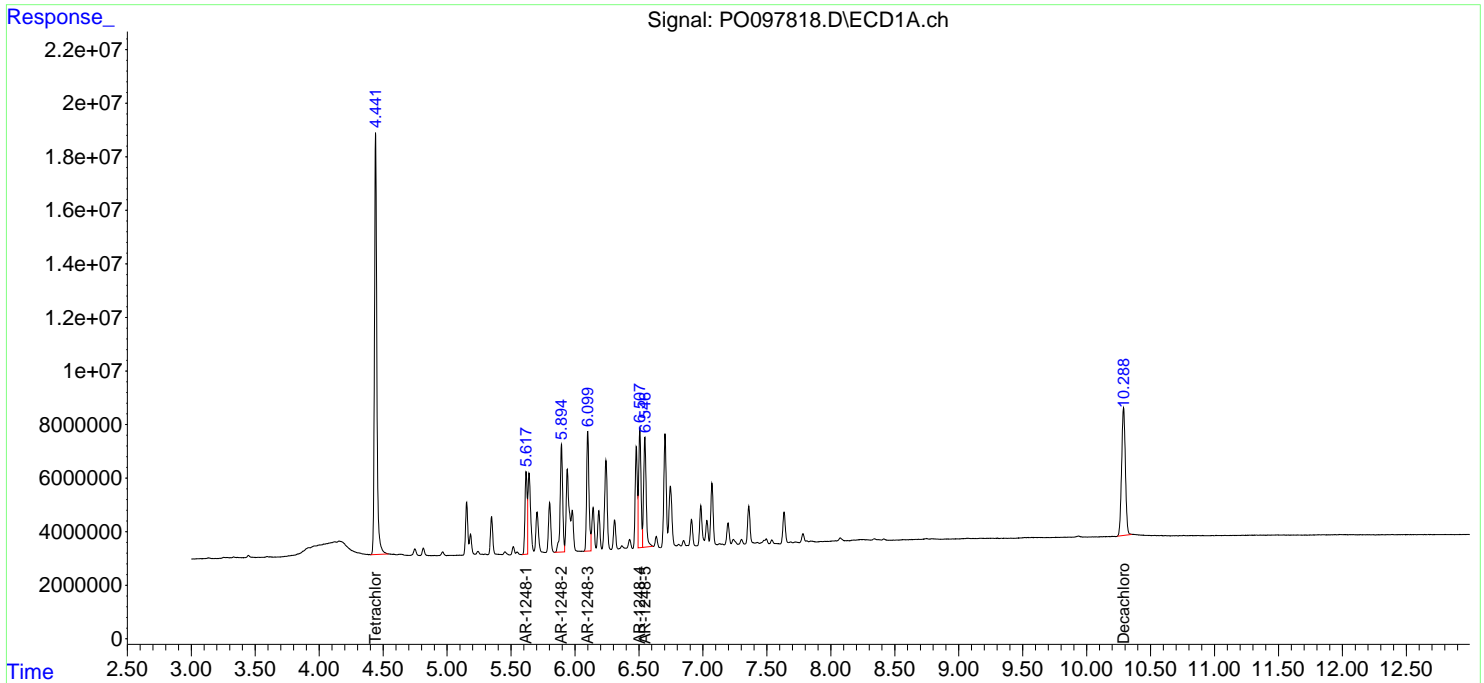
(f)=RT Delta > 1/2 Window (#)=Amounts differ by > 25% (m)=manual int.

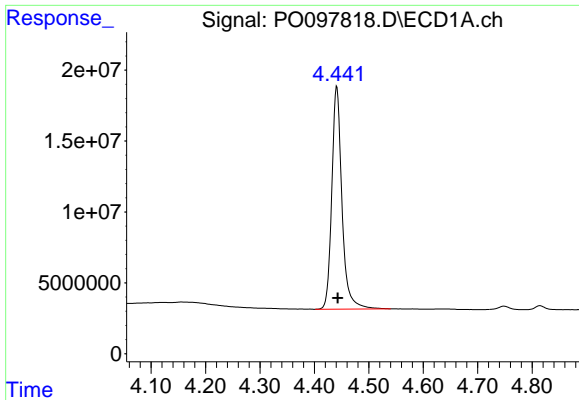
Data Path : Z:\pestpcbsrv\HPCHEM1\ECD_0\Data\PO090723\
 Data File : PO097818.D
 Signal(s) : Signal #1: ECD1A.ch Signal #2: ECD2B.ch
 Acq On : 08 Sep 2023 02:28
 Operator : YP/AJ
 Sample : AR1248CCC500
 Misc :
 ALS Vial : 5 Sample Multiplier: 1

Instrument :
 ECD_0
 ClientSampleId :
 AR1248CCC500

Integration File signal 1: autoint1.e
 Integration File signal 2: autoint2.e
 Quant Time: Sep 08 03:14:33 2023
 Quant Method : Z:\pestpcbsrv\HPCHEM1\ECD_0\methods\PO090623.M
 Quant Title : GC EXTRACTABLES
 QLast Update : Thu Sep 07 02:56:18 2023
 Response via : Initial Calibration
 Integrator: ChemStation

Volume Inj. : 2 µl
 Signal #1 Phase : ZB-MR1 Signal #2 Phase: ZB-MR2
 Signal #1 Info : 30Mx0.32mmx 0.50µ Signal #2 Info : 30M x 0.32mm x 0.25µm

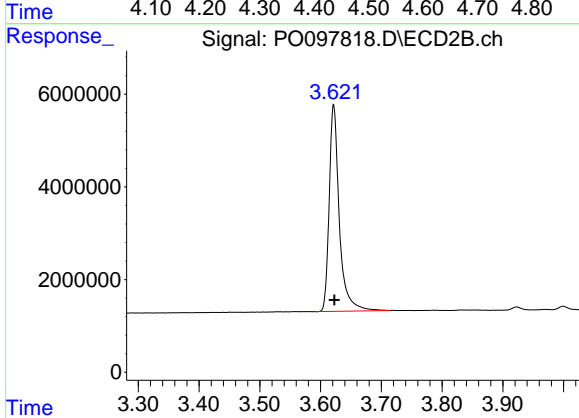




#1 Tetrachloro-m-xylene

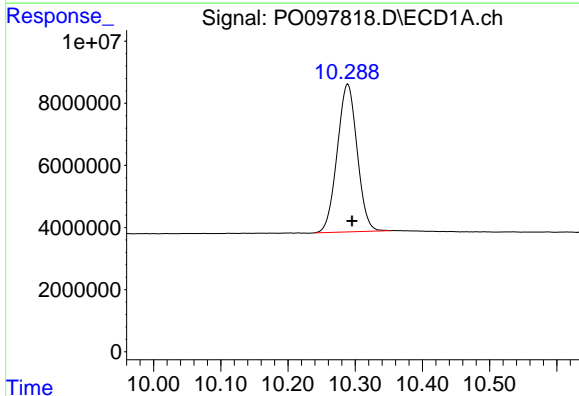
R.T.: 4.441 min
 Delta R.T.: -0.002 min
 Response: 204202853
 Conc: 51.25 ng/ml

Instrument :
 ECD_O
 ClientSampleId :
 AR1248CCC500



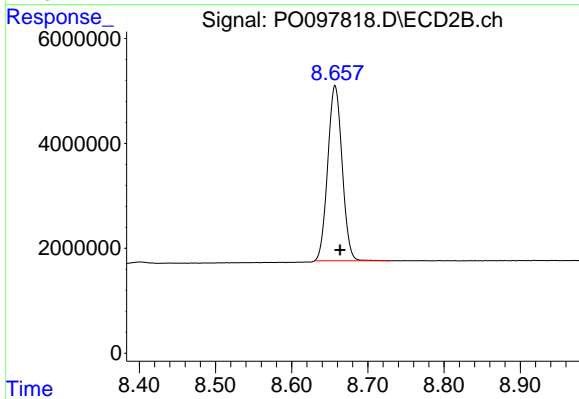
#1 Tetrachloro-m-xylene

R.T.: 3.622 min
 Delta R.T.: -0.001 min
 Response: 51596412
 Conc: 53.88 ng/ml



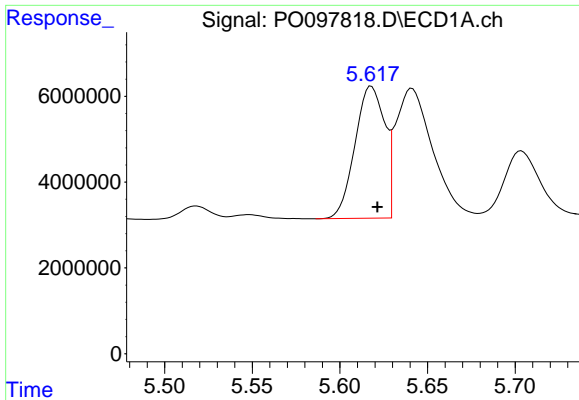
#2 Decachlorobiphenyl

R.T.: 10.289 min
 Delta R.T.: -0.006 min
 Response: 97456249
 Conc: 52.16 ng/ml



#2 Decachlorobiphenyl

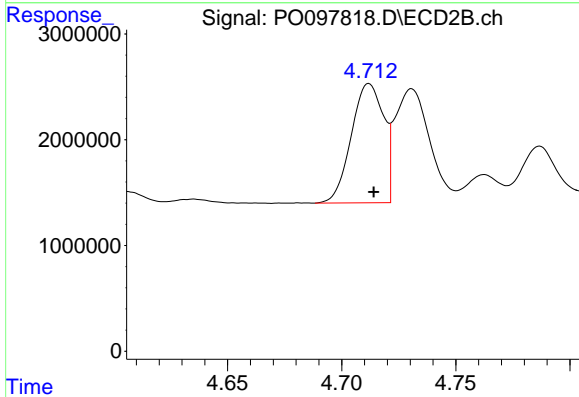
R.T.: 8.657 min
 Delta R.T.: -0.007 min
 Response: 43968528
 Conc: 51.46 ng/ml



#21 AR-1248-1

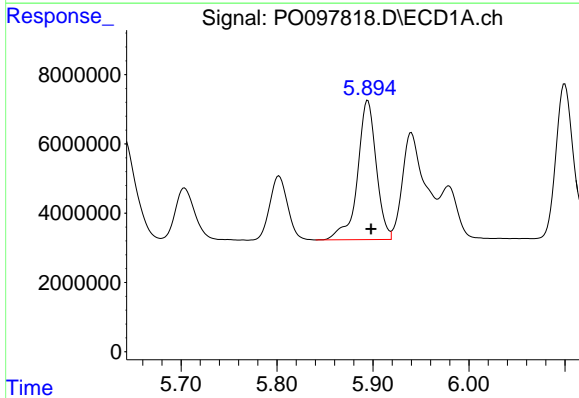
R.T.: 5.618 min
 Delta R.T.: -0.004 min
 Response: 36256708
 Conc: 534.34 ng/ml

Instrument :
 ECD_O
 ClientSampleId :
 AR1248CCC500



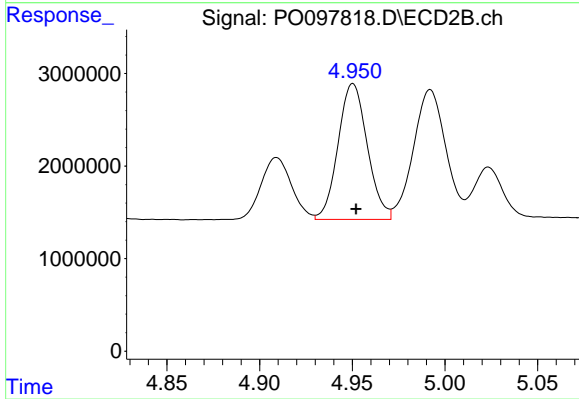
#21 AR-1248-1

R.T.: 4.712 min
 Delta R.T.: -0.002 min
 Response: 11116991
 Conc: 541.17 ng/ml



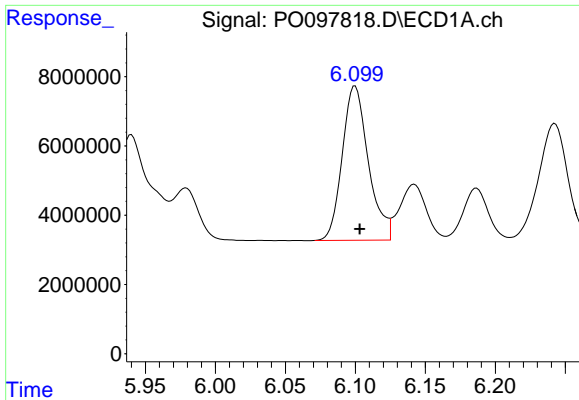
#22 AR-1248-2

R.T.: 5.895 min
 Delta R.T.: -0.003 min
 Response: 54879721
 Conc: 507.47 ng/ml



#22 AR-1248-2

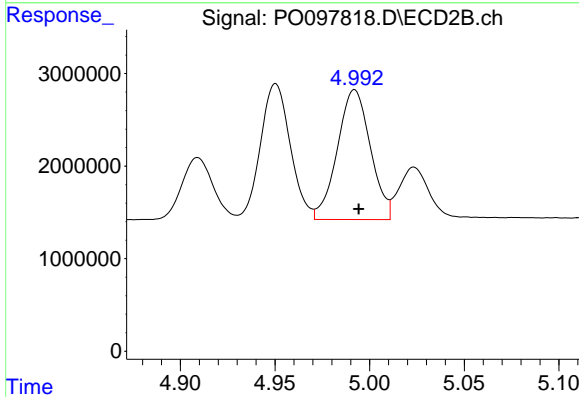
R.T.: 4.950 min
 Delta R.T.: -0.002 min
 Response: 16120908
 Conc: 529.12 ng/ml



#23 AR-1248-3

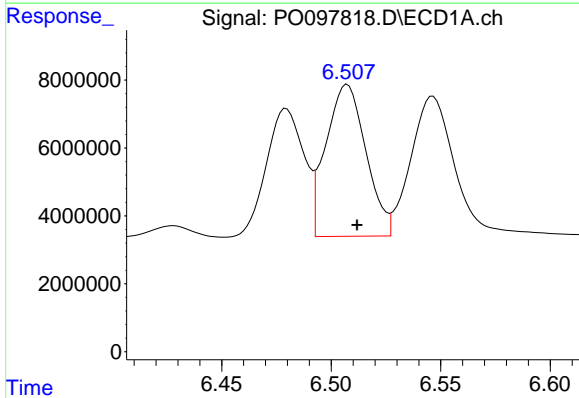
R.T.: 6.100 min
 Delta R.T.: -0.003 min
 Response: 57829751
 Conc: 515.25 ng/ml

Instrument :
 ECD_O
 ClientSampleId :
 AR1248CCC500



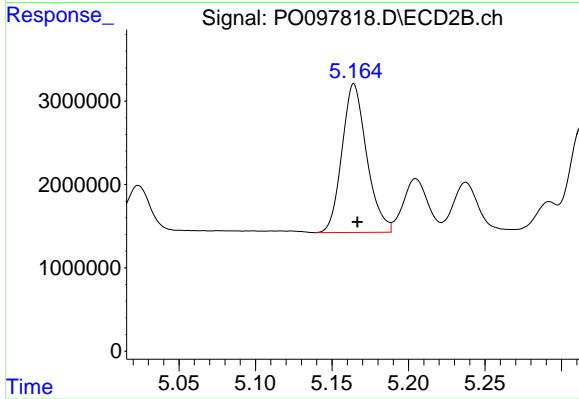
#23 AR-1248-3

R.T.: 4.992 min
 Delta R.T.: -0.002 min
 Response: 17097687
 Conc: 536.87 ng/ml



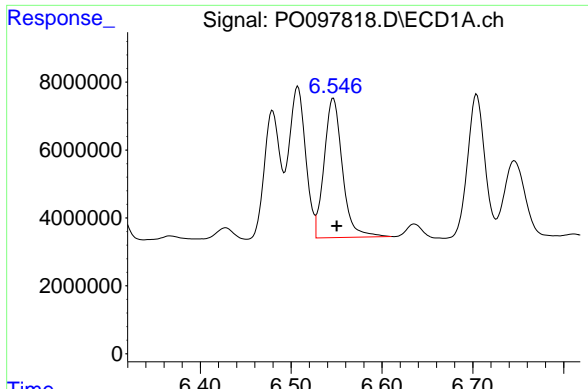
#24 AR-1248-4

R.T.: 6.507 min
 Delta R.T.: -0.004 min
 Response: 56885833
 Conc: 550.26 ng/ml



#24 AR-1248-4

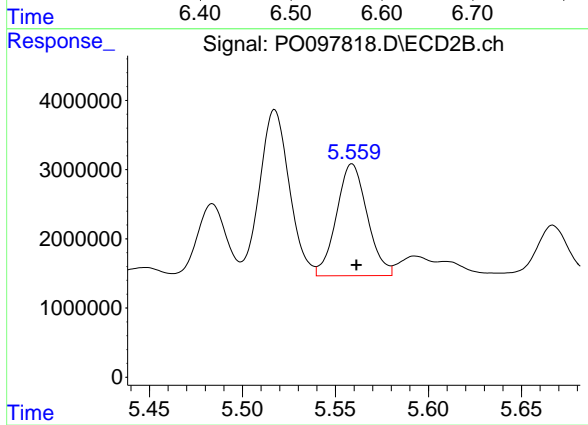
R.T.: 5.164 min
 Delta R.T.: -0.002 min
 Response: 20074121
 Conc: 536.42 ng/ml



#25 AR-1248-5

R.T.: 6.546 min
Delta R.T.: -0.004 min
Response: 57279431
Conc: 513.84 ng/ml

Instrument :
ECD_O
ClientSampleId :
AR1248CCC500



#25 AR-1248-5

R.T.: 5.559 min
Delta R.T.: -0.002 min
Response: 18619055
Conc: 558.76 ng/ml